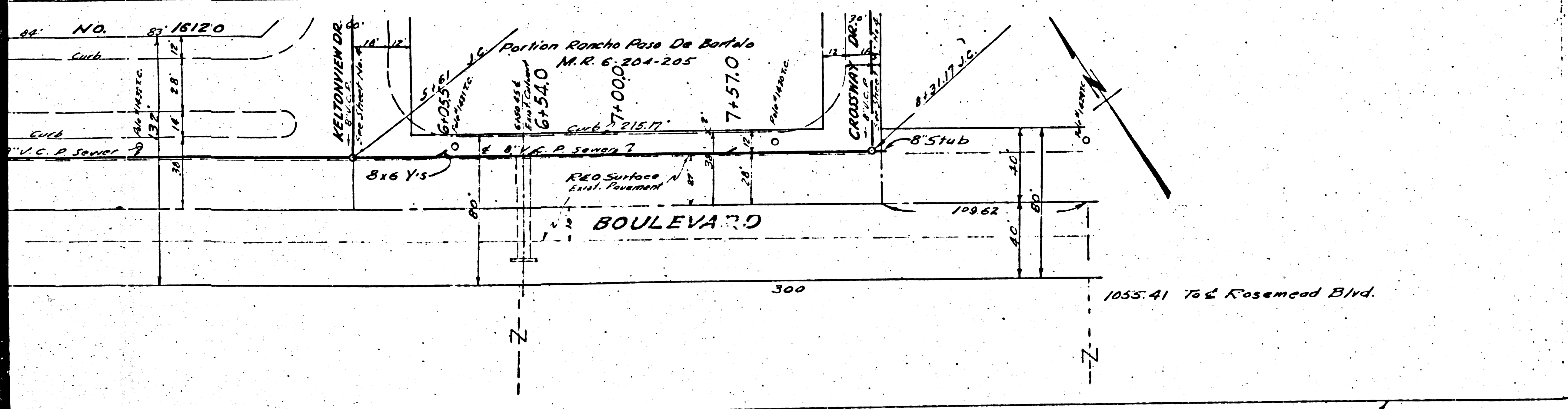


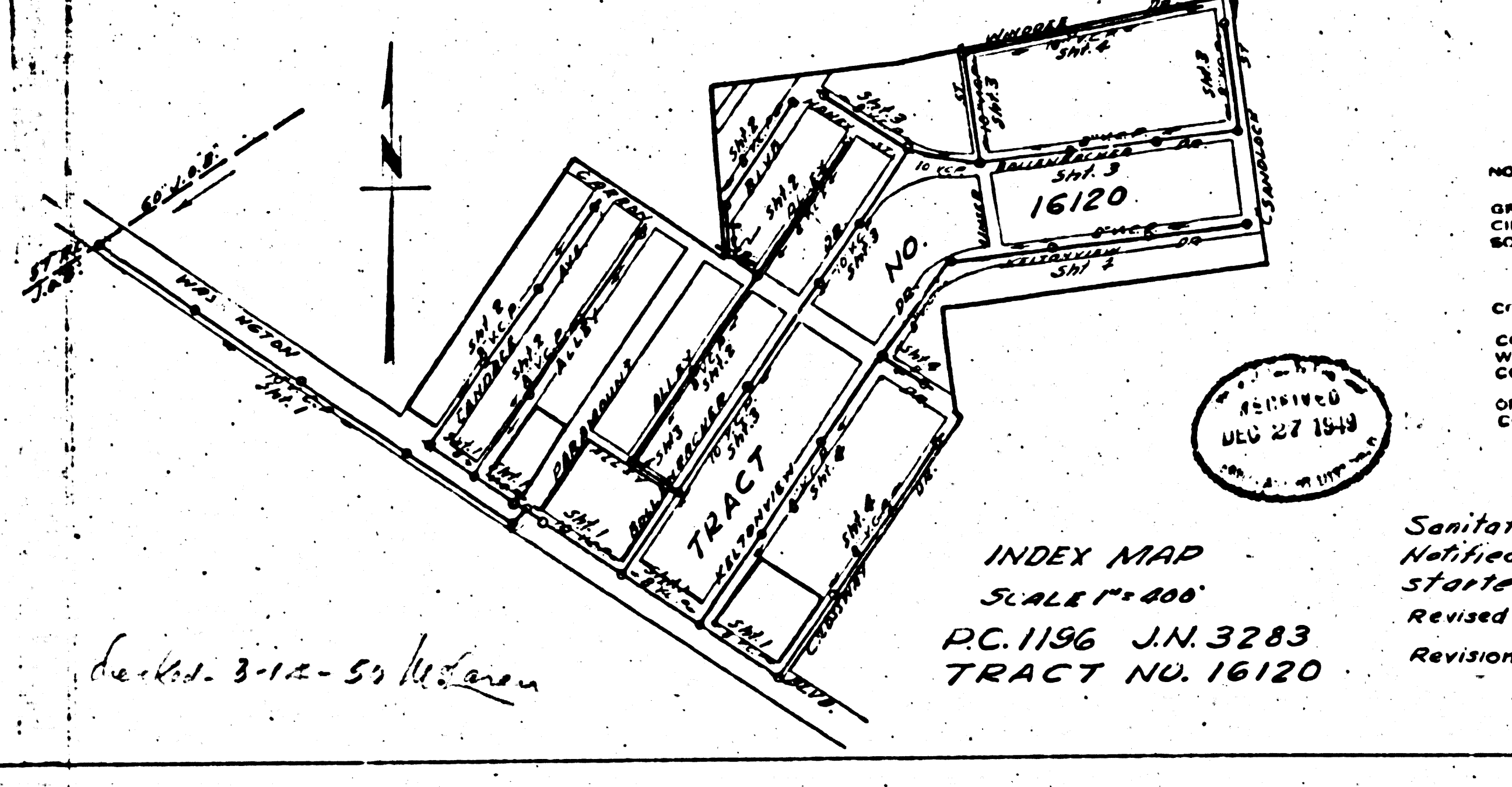
B.M. 18 above Footing on Parcel Tower No. 236-07, 100 North of Washington Blvd. and 300' West of Rosemead Blvd. E.I. 189.64.

NOTE: Approval of this plan by the County of Los Angeles does not constitute a representation as to the accuracy of the location of or the entrance or non-existence of any underground utility pipe or structure within the limits of this project.

NOTE: SEWER DATUM ON A PLANE 0.38 LOWER THAN STREET IMPROVEMENT PLANS FOR THIS TRACT ABOVE B.M. 18. 189.64 EQUALS ELEV. 40.02 ON STREET PLANS.



9960	USE STANDARD STRENGTH PIPE EXCEPT AS NOTED
	USE CEMENT MORTAR FOR ALL VITRIFIED CLAY PIPE JOINTS
	ENCASE FOUR FEET OF SEWER AT POINTS OF INTERFERENCE WITH POLES AS PER S-413
	CONSTRUCT HOUSE CONNECTIONS WITH INVERT AT CURB LINE 6 FEET BELOW CURB GRADE EXCEPT AS NOTED
	ALL STRUCTURES SHALL BE BRICK SEWER STRUCTURES AS PER PLAN NO. S-4-104
	USE STANDARD MANHOLE FRAMES AND COVERS AS PER PLAN NO. S-4-117
	RESURFACE ALL TRENCHES WITHIN PAVED AREA TO MEET LOS ANGELES COUNTY ROAD DEPT. OR STATE HIGHWAY REQUIREMENTS
	PROVIDE STAKES ON THE PROPERTY LINES OR PROPERTY LINES PRODUCED, AT RIGHT ANGLES TO THE SEWER LINE AT THE CENTER LINE OF EACH MANHOLE
	NO REVISIONS SHALL BE MADE IN THESE PLANS WITHOUT APPROVAL OF THE COUNTY ENGINEER. NO REPRESENTATIVE OF THE COUNTY ENGINEER WILL SURVEY OR LAY-OUT ANY PORTION OF THE WORK.
	THE OWNER OR HIS AUTHORIZED REPRESENTATIVE SHALL FURNISH THE COUNTY ENGINEER WITH GRADE SHEETS AND STATIONS OF ALL HOUSE CONNECTIONS AND Y BRANCHES, AND SHALL PROVIDE STAKES FOR THEM AT THEIR PROPER LOCATIONS WITH STATIONING PLAINLY MARKED. ANY CHANGE OF LOCATION SHALL BE REQUESTED IN WRITING BY THE OWNER OR HIS REPRESENTATIVE.



INDEX MAP
SCALE 1"=400'
P.C. 1196 J.N. 3283
TRACT NO. 16120

PROFILE ALIGNMENT AND GRADE OF
SANITARY SEWERS
TO BE CONSTRUCTED IN
TRACT NO. 16120
ON
WASHINGTON BOULEVARD

PRIVATE CONTRACT NO. 1196
W. S. 36

SHEET 1 OF 4 SHEETS

PREPARED IN THE OFFICES OF
KEMMERER ENG. CO.

BY *John T. Kemmerer*
REG. C.E. NO. 172

FOR LEGEND
SEE PLAN NO. S-4-104

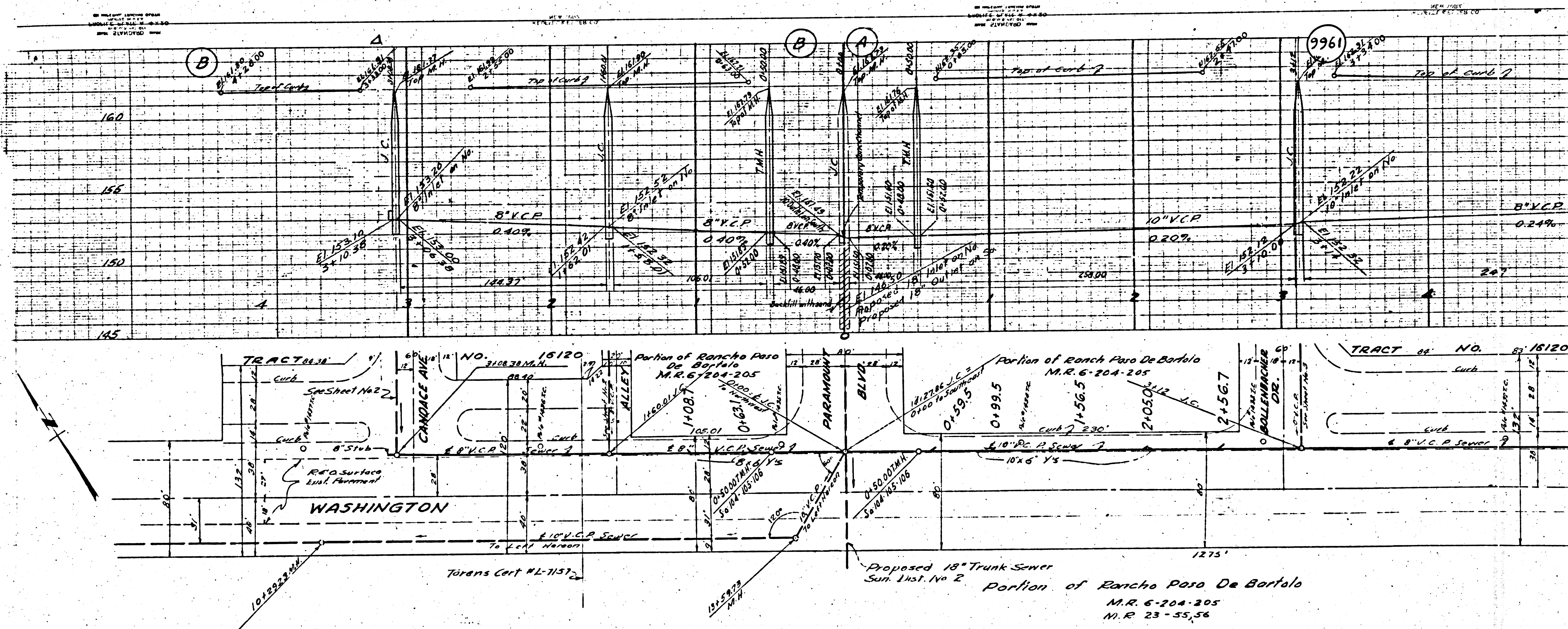
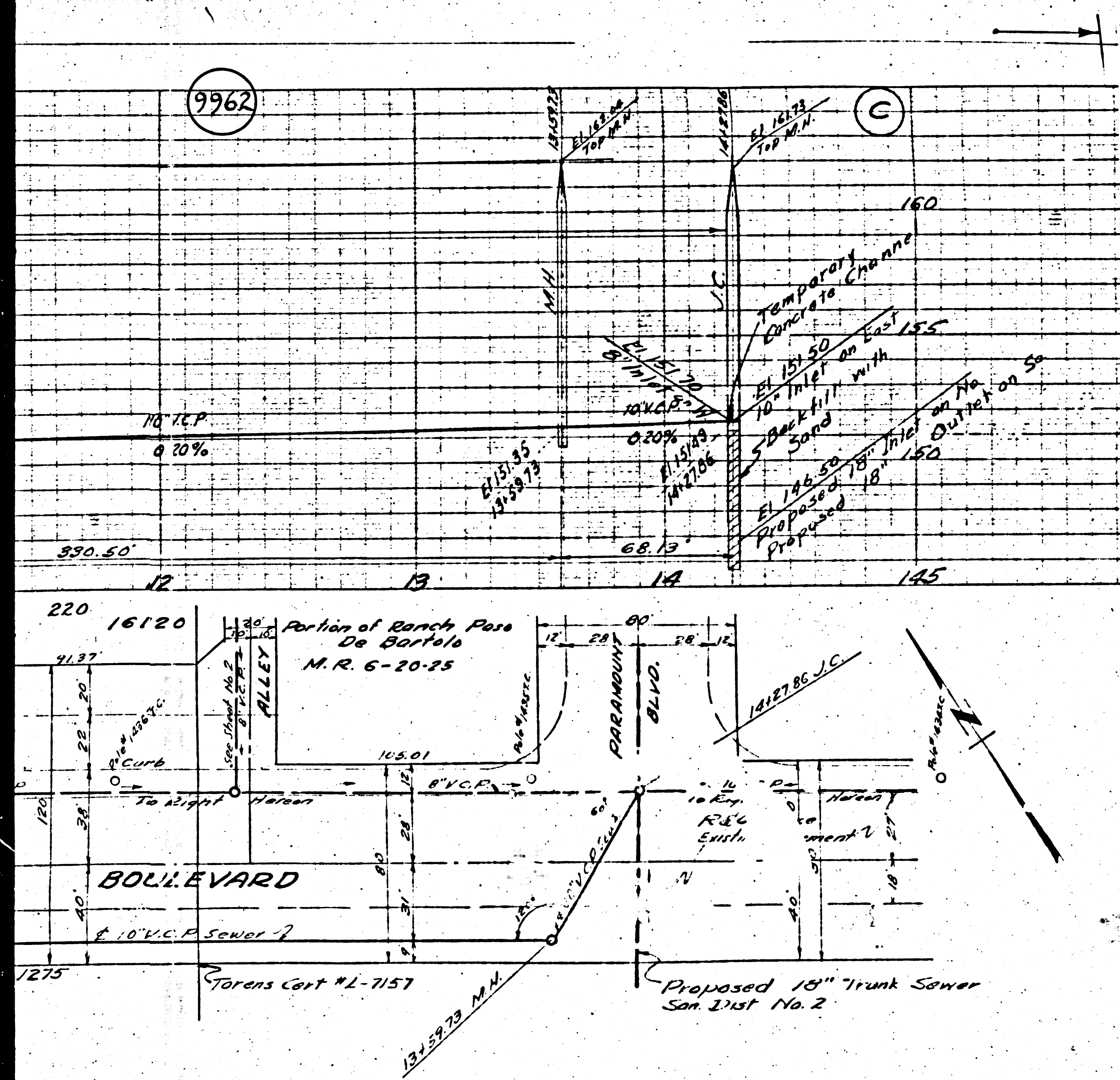
NOTE
GRADES TO WHICH THIS IMPROVEMENT IS TO BE CONSTRUCTED ARE SHOWN ON PLANS AND PROFILES. GRADE POINTS FOR TOP OF CURB, CENTER LINE OF STREET OR CENTER LINE OF ALLEY ARE SHOWN BY CIRCLES ON PROFILES AT ALL POINTS BETWEEN DESIGNATED POINTS. THE GRADE SHALL BE ESTABLISHED SO AS TO CONFORM TO A STRAIGHT LINE DRAWN BETWEEN SAID DESIGNATED POINTS. ELEVATIONS ARE IN FEET ABOVE U. S. C. & G. DATUM OR MEAN SEA LEVEL. THIS DRAWING AND THE DATA HEREON ARE HEREBY MADE A PART OF THE SPECIFICATIONS. WORK SHALL BE CONSTRUCTED ACCORDING TO SPECIFICATIONS ON FILE IN THE OFFICE OF THE COUNTY ENGINEER AND SHALL BE PROSECUTED ONLY IN THE PRESENCE OF THE COUNTY ENGINEER. BEFORE WORK CAN BE STARTED, THE CONTRACTOR MUST OBTAIN A PERMIT TO EXCAVATE IN COUNTY STREETS FROM THE COUNTY ROAD DEPT. TO GOVERN BY LOS ANGELES AND MAKE A DEPOSIT WITH THE COUNTY ENGINEER \$100.00 AT 10 AM IN THE STREET, SUFFICIENT TO COVER THE COST OF CONSTRUCTION, INSPECTION AND RECORD PLANS. IF WORK IS TO BE DONE IN A STATE HIGHWAY, A PERMIT MUST BE OBTAINED FROM THE STATE OF CALIFORNIA, DIVISION OF HIGHWAYS, 808 STATE BUILDING, AFTER MAKING THE DEPOSIT WITH THE COUNTY ENGINEER.

COUNTY OF LOS ANGELES, CALIFORNIA

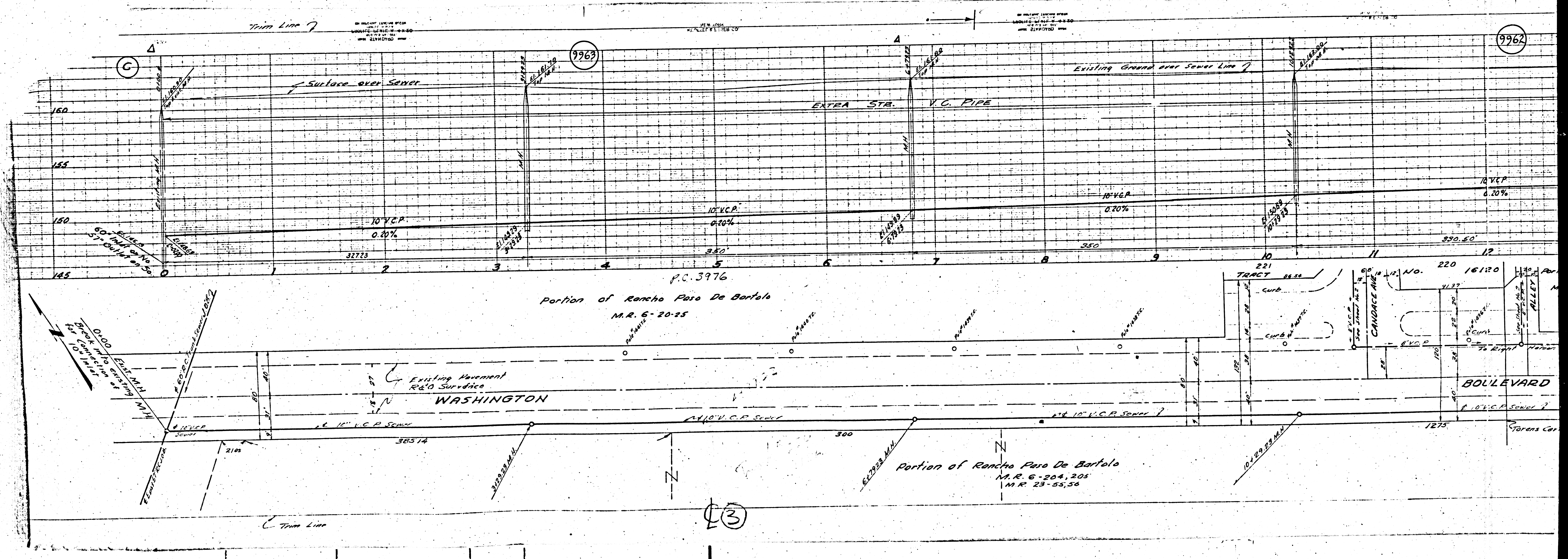
Sanitation Dist. No. 2 Must be notified before work can be started.
Revised 12-9-49
Revision Checked By *J. T. Kemmerer* 12/9/49
OFFICE OF COUNTY ENGINEER, REG. C.E. NO. 1003

APPROVED *Ch. Dr. P. H. ...* COUNTY ENGINEER
APPROVED *C. R. Compton* ACTING CHIEF ENGINEER, COUNTY OF LOS ANGELES, SANITATION DISTRICT NO. 2

CHECKED BY *James T. Redden* 12-5-49
OFFICE OF COUNTY ENGINEER REG. C.E. NO. 7103



②



Trim Line 7

9963

9962

Surface over Sewer

Existing Ground over Sewer Line 7

EXTRA STA. V.C. PIPE

10" V.C.P. 0.20%

10" V.C.P. 0.20%

10" V.C.P. 0.20%

10" V.C.P. 0.20%

P.C. 3976

Portion of Rancho Paso De Bartolo
M.R. 6-20-25

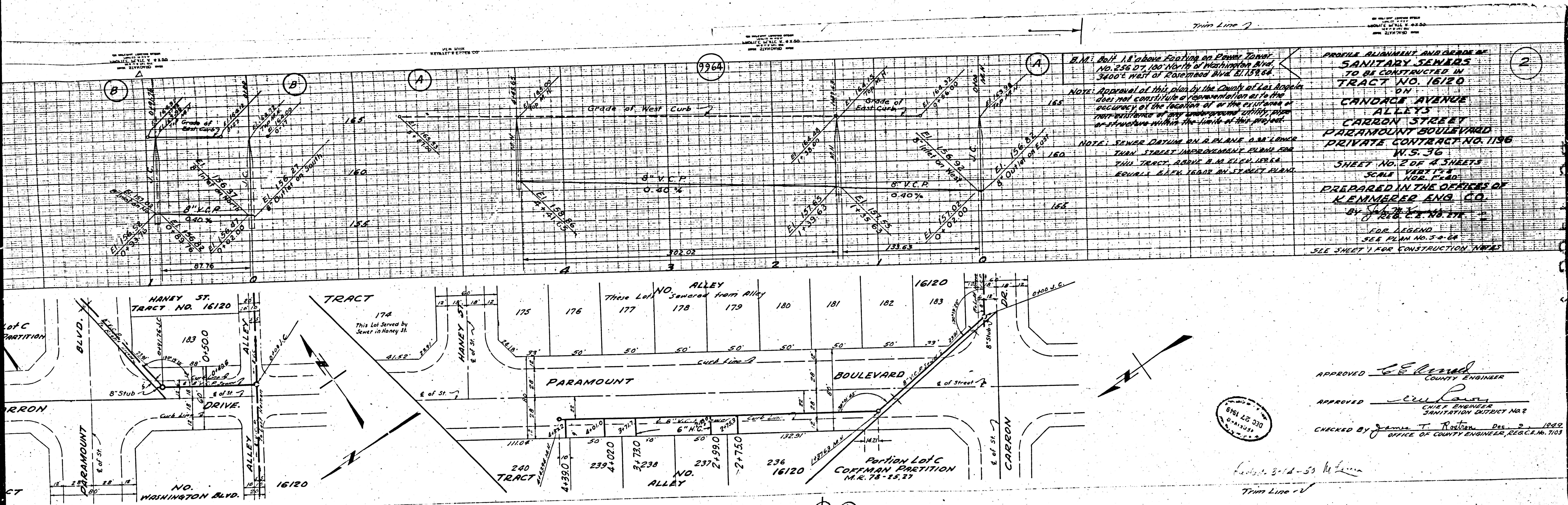
WASHINGTON

BOLLEVAARD

Portion of Rancho Paso De Bartolo
M.R. 6-204, 205
M.R. 23-55, 56

3

Trim Line



B.M. 1.8 above Footing on Power Tank, No. 255 DT 100 North of Washington Blvd, 3400' West of Rosemead Blvd. B. 138.84.

NOTE: Approval of this plan by the County of Los Angeles does not constitute a representation as to the accuracy of the location of or the existence or non-existence of any underground utility pipes or structures within the limits of this project.

NOTE: SEWER DATUM ON A PLANE 0.34' LOWER THAN STREET IMPROVEMENT PLANS FOR THIS TRACT, ABOVE B.M. ELEV. 152.84. EQUALS ELEV. GRADE BY STREET PLANS.

PROFILE ALIGNMENT AND GRADE OF
SANITARY SEWERS
 TO BE CONSTRUCTED IN
TRACT NO. 16120
 ON
CANDACE AVENUE
ALLEYS
CARRON STREET
PARAMOUNT BOULEVARD
PRIVATE CONTRACT NO. 1186
 W.S. 36
 SHEET NO. 2 OF 4 SHEETS
 SCALE VERT. 1" = 4'

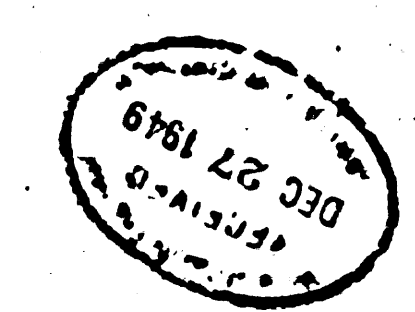
PREPARED IN THE OFFICES OF
KEMMERER ENG. CO.
 BY **John W. Kemmerer**
 REG. E.C. NO. 274

FOR LEGEND
 SEE PLAN NO. 5-0-68
 SEE SHEET 1 FOR CONSTRUCTION NOTES

APPROVED E. E. Lewis
 COUNTY ENGINEER

APPROVED Ed. Rossi
 CHIEF ENGINEER
 SANITATION DISTRICT NO. 2

CHECKED BY James T. Rosten Dec 2 1962
 OFFICE OF COUNTY ENGINEER, REG. C.E. NO. 7103



Handwritten notes: 3-17-68 - 53, W. Lewis
 Trim Line - V

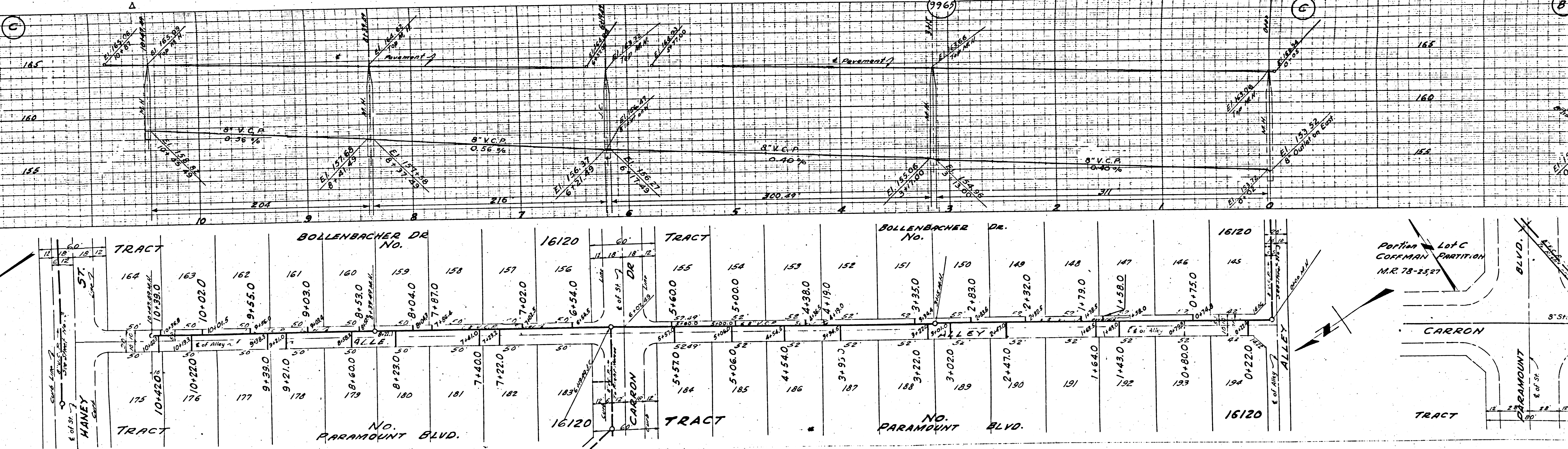
20

NEW YORK
WENDELL FISCHER INC.

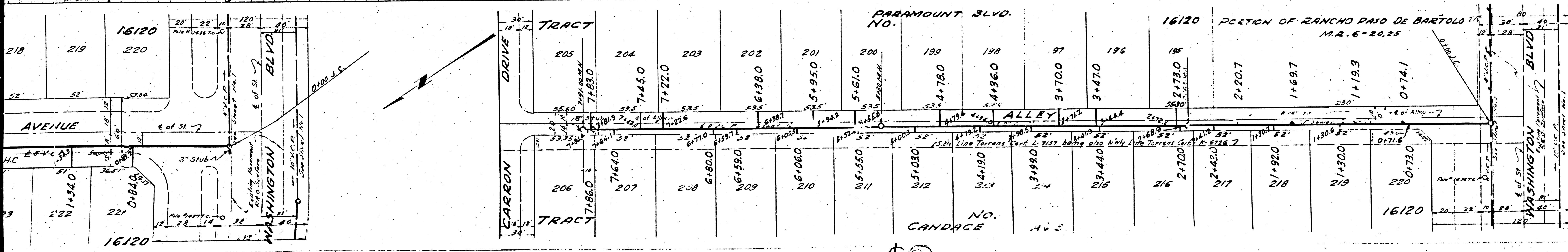
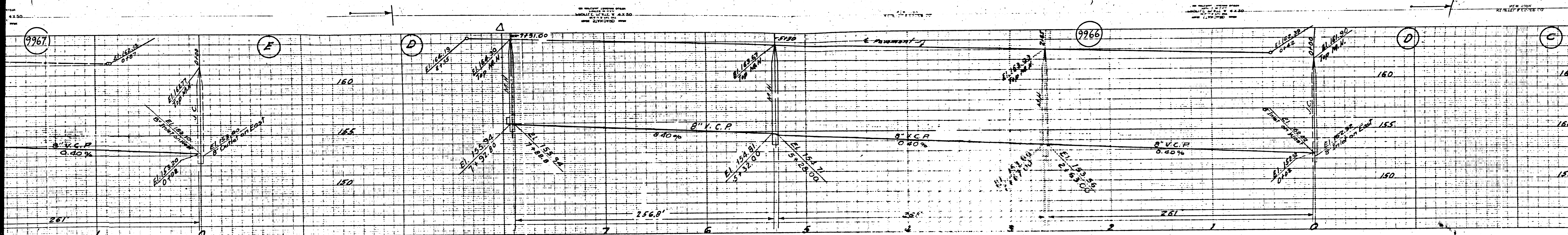
NEW YORK
WENDELL FISCHER INC.

NEW YORK
WENDELL FISCHER INC.

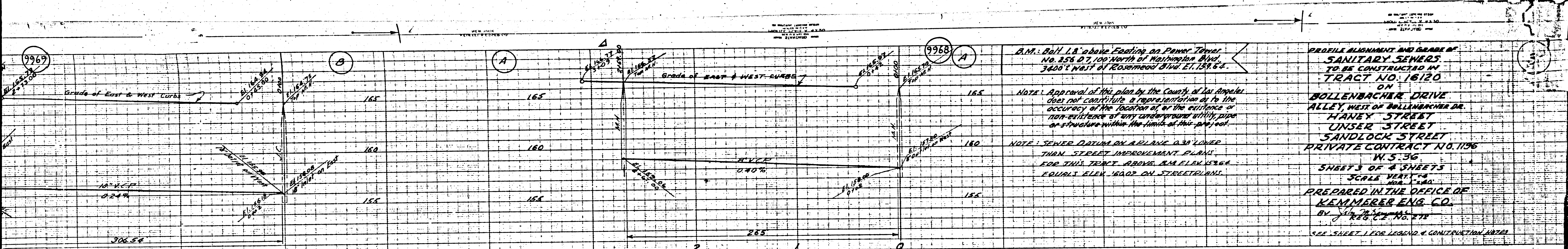
NEW YORK
WENDELL FISCHER INC.



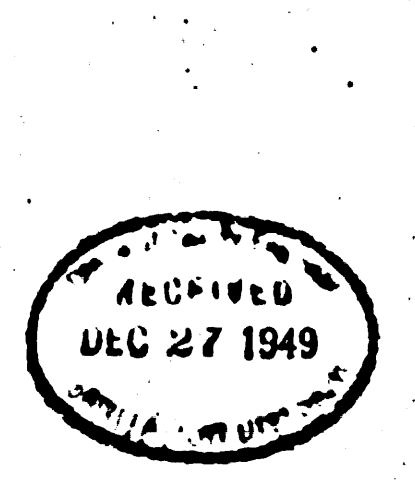
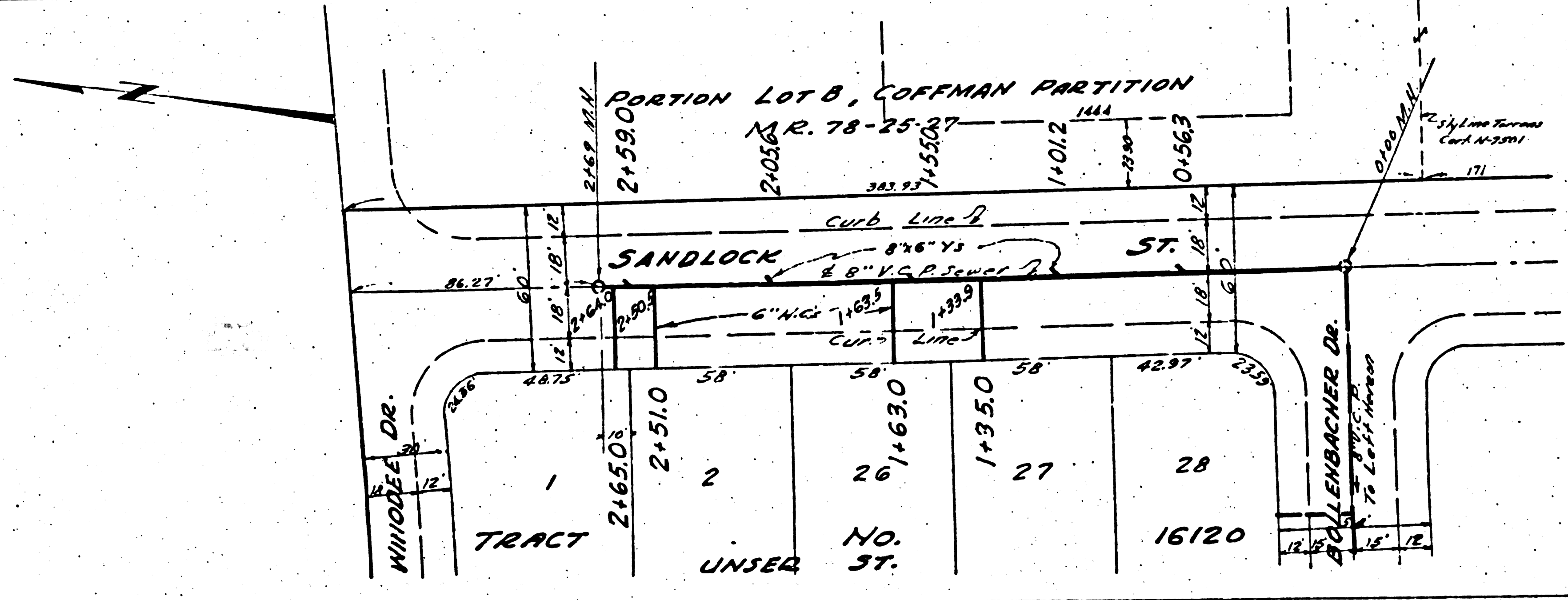
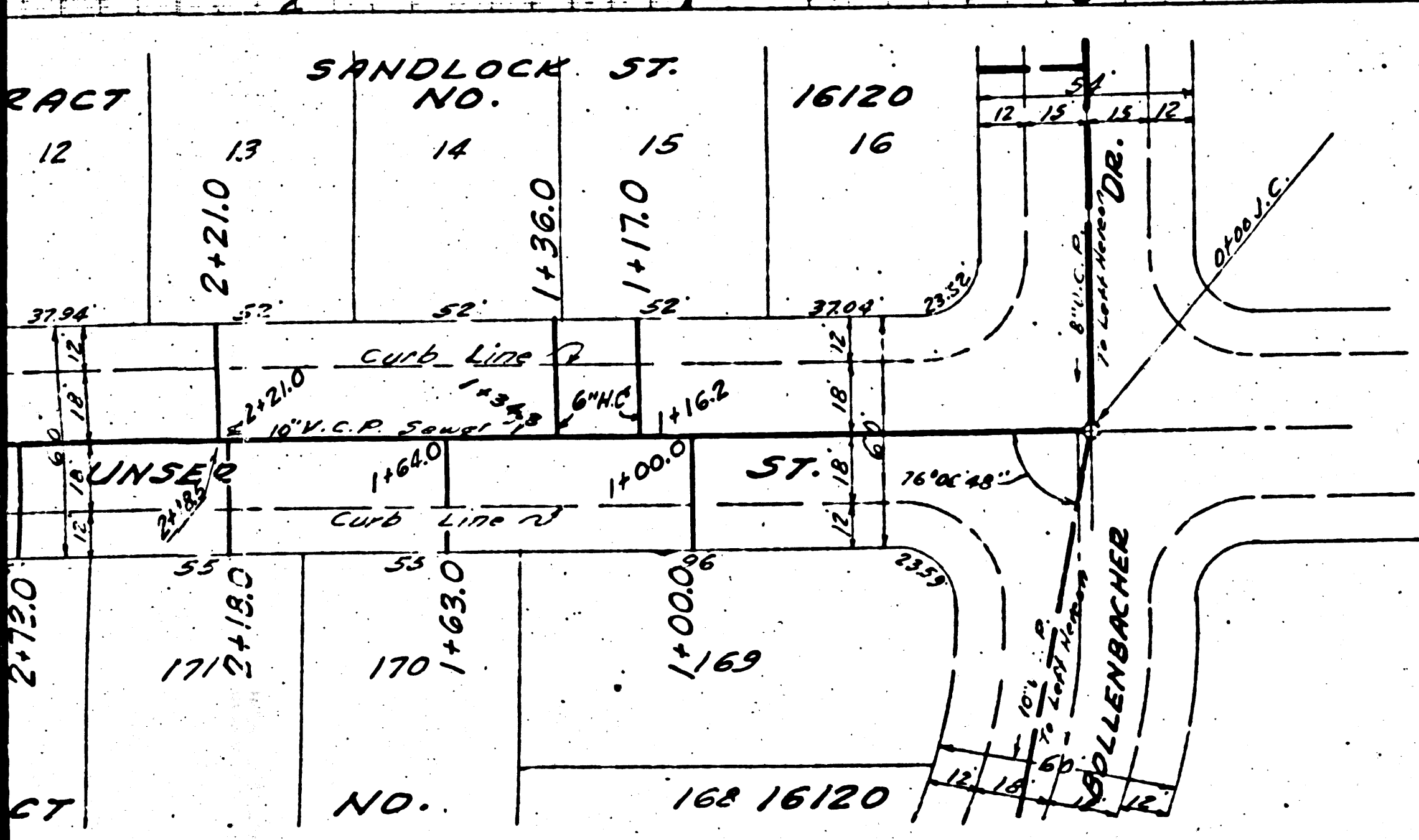
(2)



(3)



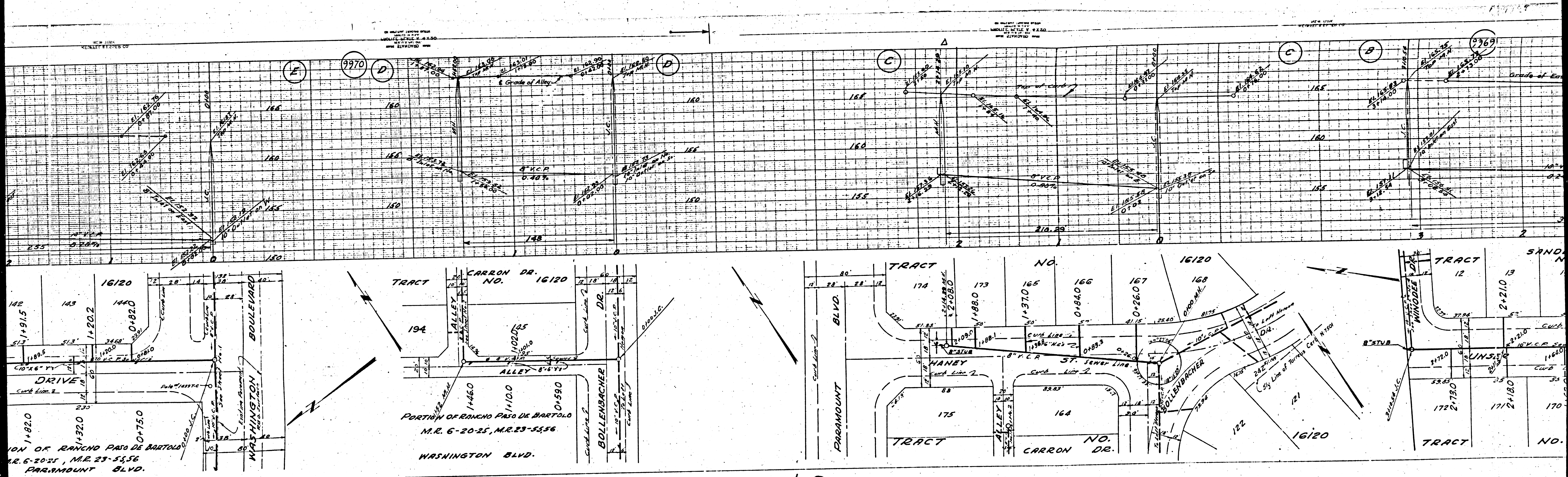
PROFILE ALIGNMENT AND GRADE OF
SANITARY SEWERS
 TO BE CONSTRUCTED IN
TRACT NO. 16120
 ON
BOLLENBACHER DRIVE
 ALLEY, WEST OF BOLLENBACHER DR.
HANEY STREET
SANDLOCK STREET
 PRIVATE CONTRACT NO. 1196
 N. 5.36
 SHEETS OF 4 SHEETS
 SCALE VERT. 1" = 4'
 HORIZ. 1" = 40'
 PREPARED IN THE OFFICE OF
KEMMERER ENG. CO.
 BY J. T. RUTEN
 REG. C.E. NO. 278
 SEE SHEET 1 FOR LEGEND & CONSTRUCTION NOTES



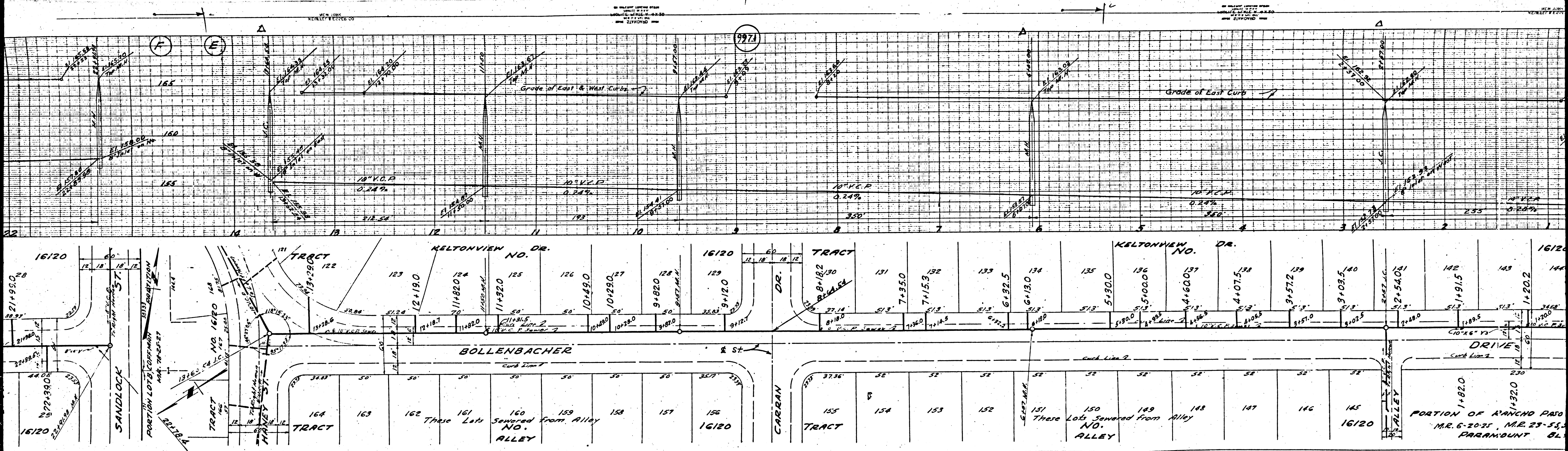
APPROVED *[Signature]*
 COUNTY ENGINEER
 APPROVED *[Signature]*
 CHIEF ENGINEER
 SANITATION DISTRICT NO. 2
 CHECKED BY J. T. RUTEN, DECEMBER 12, 1949
 OFFICE OF COUNTY ENGINEER, REG. C.E. NO. 103

Check 3-14-50 [Signature]

CD

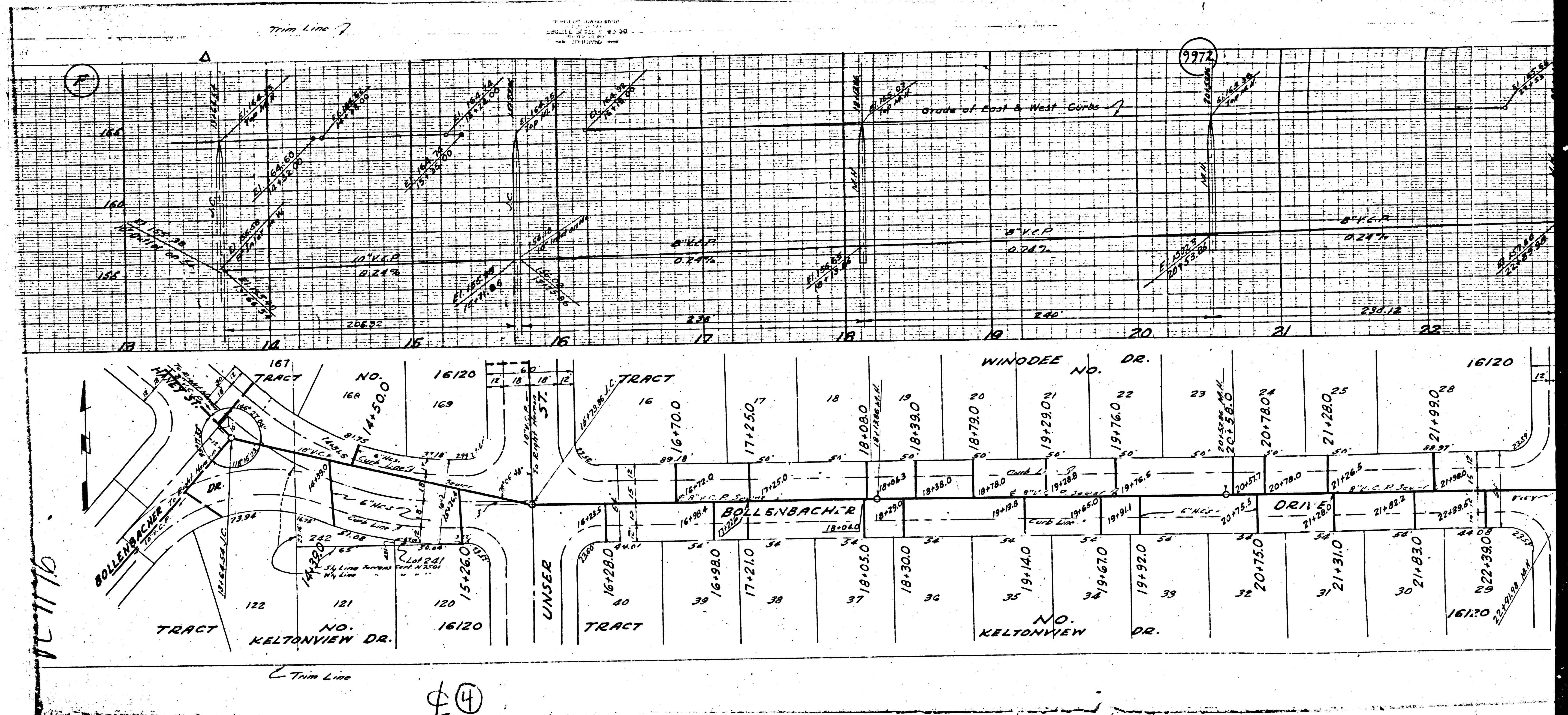


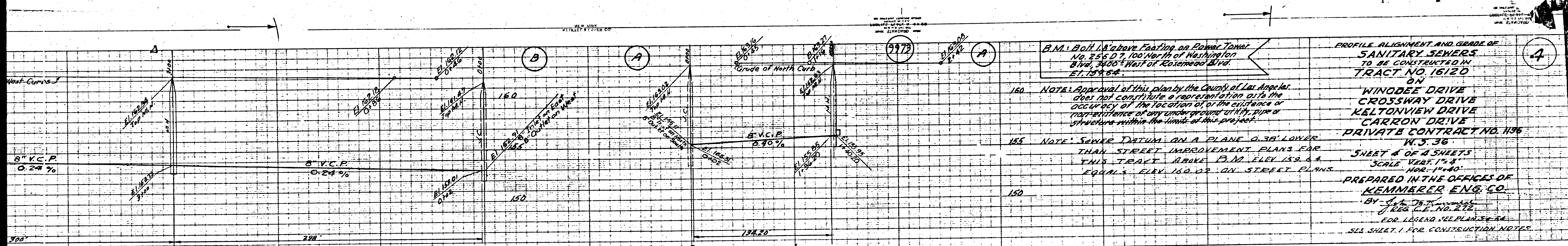
(2)



23

PORTION OF RANCHO PAGO
 M.R. 6-2035, M.R. 23-55,
 PARAMOUNT BL.



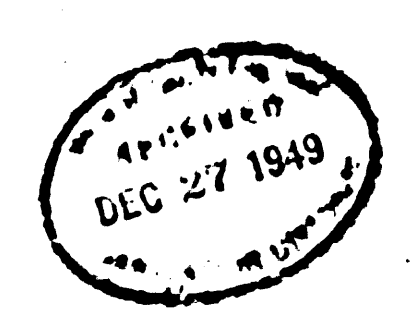
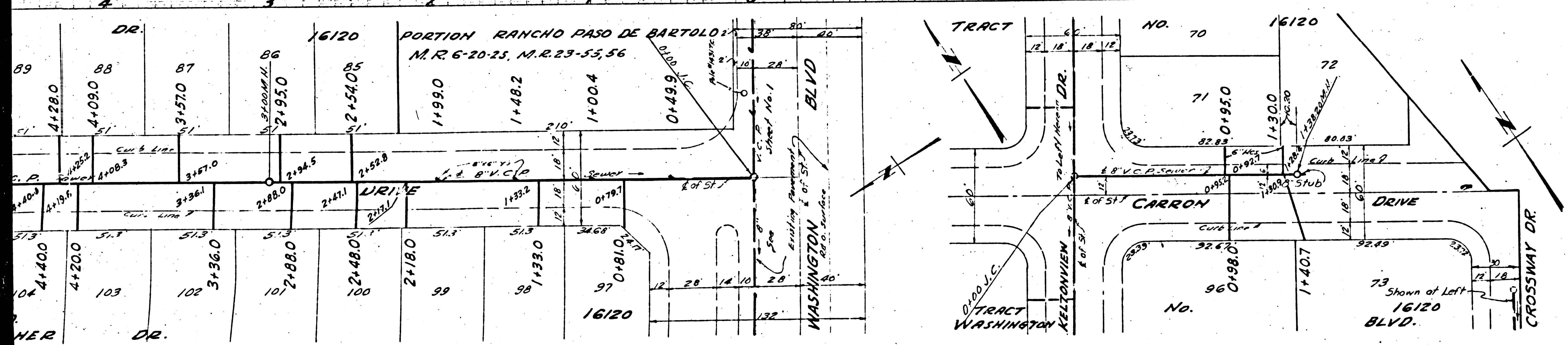


B.M. Bolt 18' above Footing on Power Tower
 No. 256 D 7, 100' North of Washington
 Blvd, 3400' West of Rosemead Blvd.
 E.I. 1594.64

NOTE: Approval of this plan by the County of Los Angeles does not constitute a representation as to the occupancy of the location or the existence or transportation of any underground utility, pipe or structure within the limits of this project.

NOTE: Sewer Datum on a plane 0.36' lower than street improvement plans for this tract above B.M. ELEV. 159.44 equals ELEV. 160.02 on street plans.

PROFILE ALIGNMENT AND GRADE OF
SANITARY SEWERS
 TO BE CONSTRUCTED IN
 TRACT NO. 16120
 ON
 WINDBEE DRIVE
 CROSSWAY DRIVE
 KELTONVIEW DRIVE
 CARRON DRIVE
 PRIVATE CONTRACT NO. 1196
 W.S. 36
 SHEET 4 OF 4 SHEETS
 SCALE: HORIZ. 1"=40'
 VERT. 1"=4'
 PREPARED IN THE OFFICES OF
KEMMERER ENG. CO.
 BY *[Signature]*
 REG. C.E. NO. 212
 FOR LEGEND, SEE PLANS & E.C.
 SEE SHEET 1 FOR CONSTRUCTION NOTES.



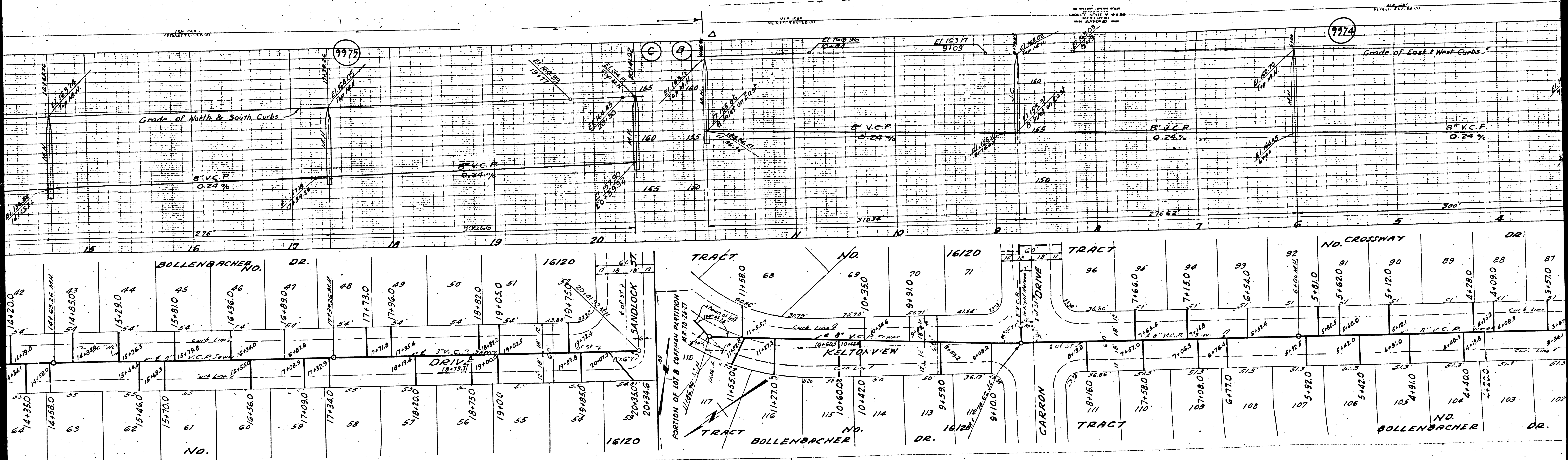
APPROVED *[Signature]*
 COUNTY ENGINEER

APPROVED *[Signature]*
 CHIEF ENGINEER
 SANITATION DISTRICT NO. 2

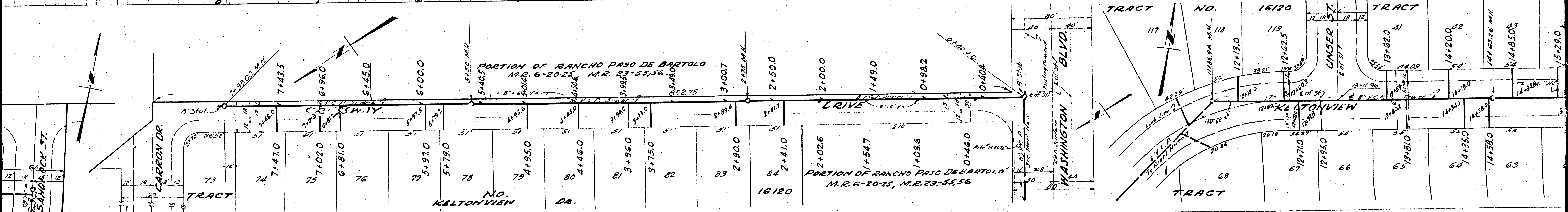
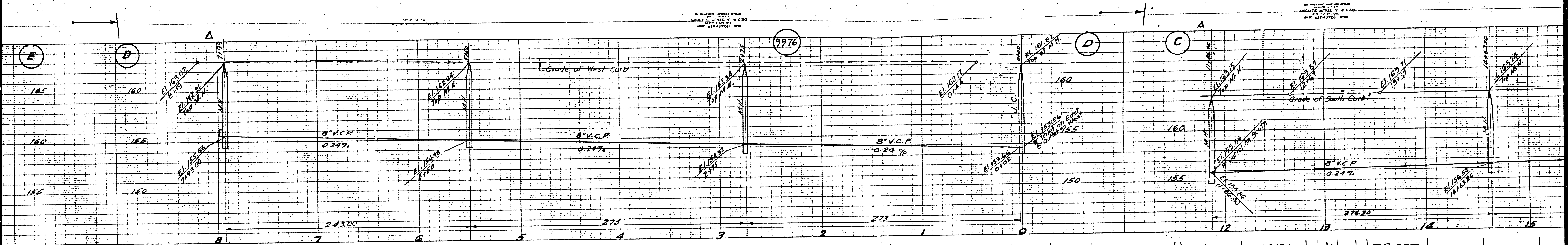
CHECKED BY *[Signature]* 12/18/49
 OFFICE OF COUNTY ENGINEER, REG. C.E. NO. 1109

[Handwritten note]
 7mm Line 2'

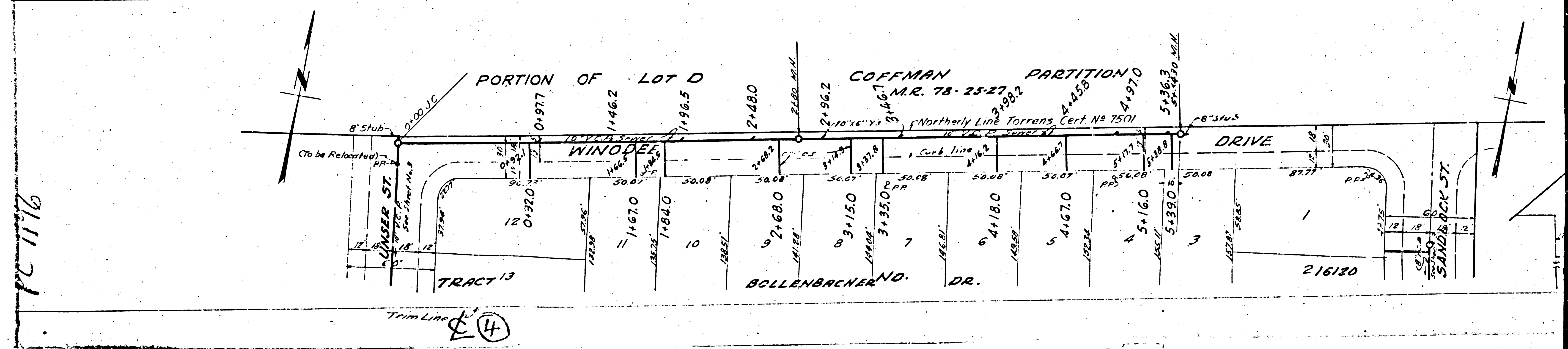
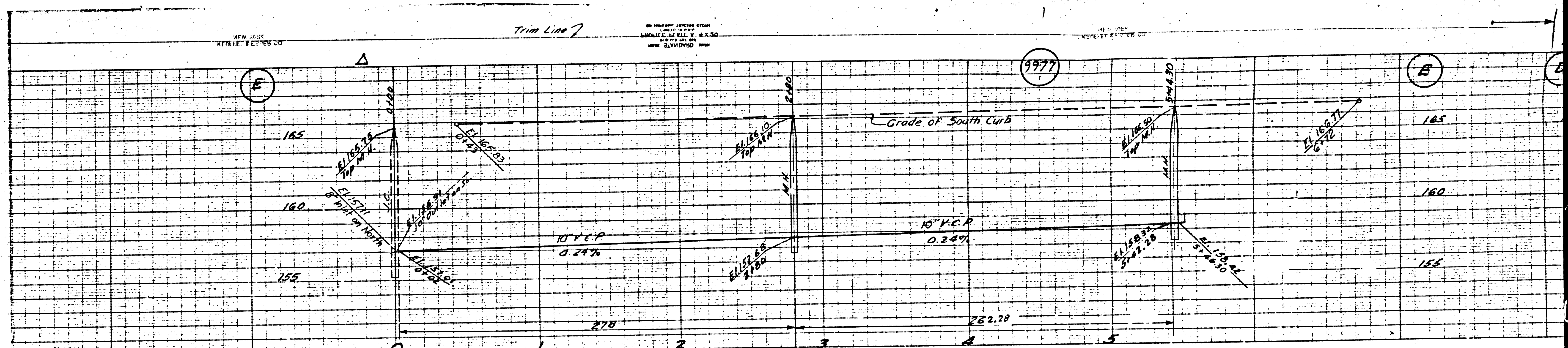
40



20



③



PC 1176

4