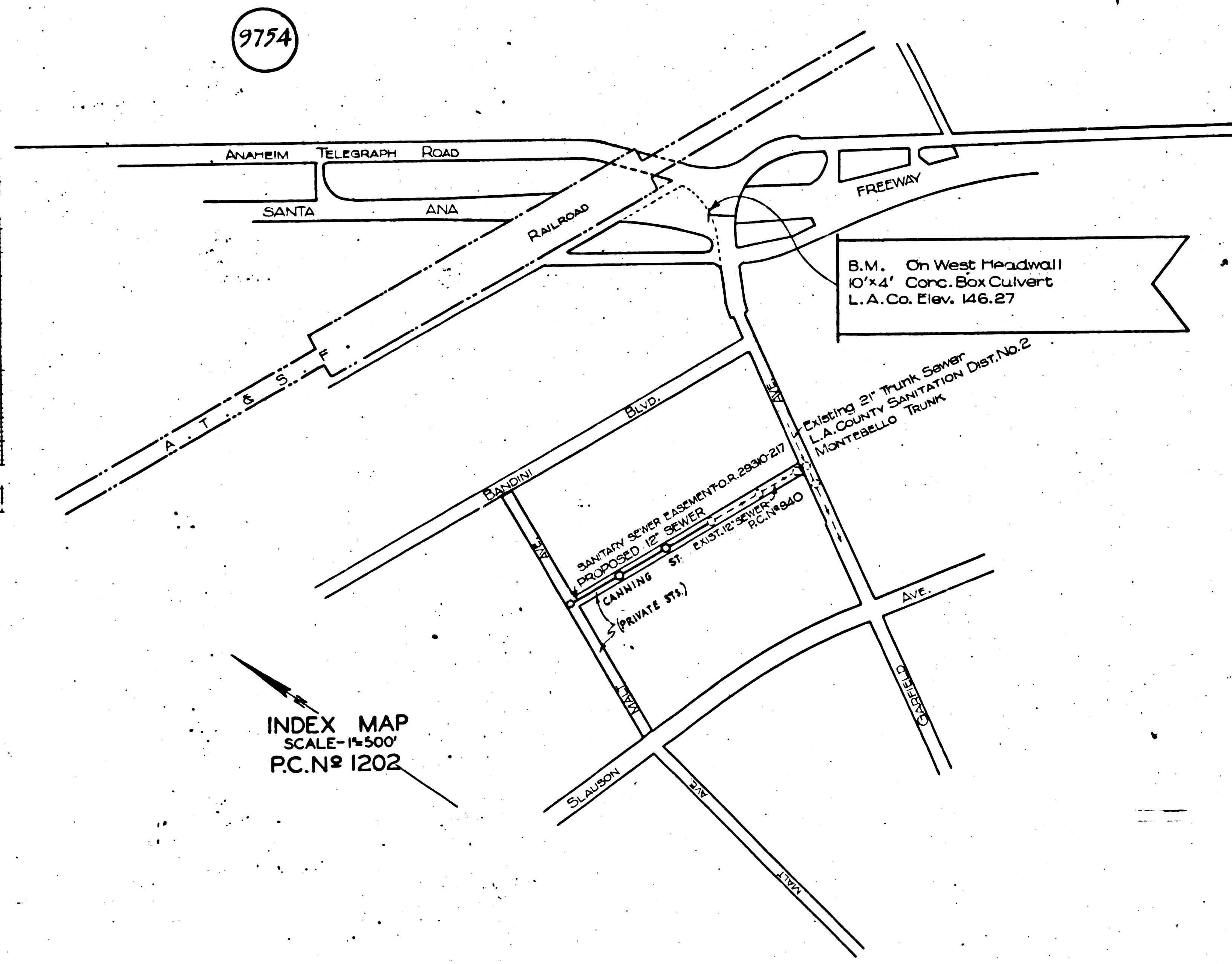


9754



INDEX MAP  
SCALE-1"=500'  
P.C. NO. 1202

Use Extra Strength Pipe  
 Use Cement Mortar for all Vitrified Clay pipe joints  
 Encase four feet of sewer at points of interference with poles as per S-a-119  
 All structures shall be brick sewer structures as per Plan No. S-a-104  
 Use standard manhole frames and covers as per Plan No. S-a-117  
 Resurface all trenches within paved area to meet Los Angeles County Road Dept. requirements.  
 House connection to be constructed on 1/4" rise per foot to property line

No revisions shall be made in these plans without approval of the County Engineer  
 No representative of the County Engineer will survey or lay out any portion of the work

The Owner or his authorized representative shall furnish the County Engineer with grade sheets and stations of all house connections and V locations with stationing plainly marked  
 Any change of location shall be requested in writing by the owner or his representative

Before any connections for the disposal of liquid industrial waste is to be made to this sewer, detailed plans must be submitted to and a permit secured from the County Engineer  
 Sanitation District must be notified before work can start  
 Undergrounds, Note:  
 Approval of this plan by the County of Los Angeles does not constitute a representation as to the accuracy of the location of, or the existence or non-existence of, any underground utility, pipe, or structure within the limits of this project.

PROFILE ALIGNMENT AND GRADE OF  
**SANITARY SEWERS**  
 TO BE CONSTRUCTED IN  
 SANITARY SEWER RIGHT OF WAY  
**CANNING STREET**  
 FROM  
 EXISTING 12" SEWER 700' WESTERLY OF GARFIELD  
 AVE. WESTERLY TO MALT AVE.

PRIVATE CONTRACT NO. 1202  
W. S. 36

SCALE VERT. 1"=4'  
HORIZ. 1"=40'  
OCTOBER 1949  
 PREPARED IN THE OFFICES OF  
**CENTRAL MANUFACTURING DISTRICT INC.**

BY *R. M. Collins*  
 REG. C.E. NO. 7269

FOR LEGEND  
 SEE PLAN NO. S-8-84

NOTE  
 GRADES TO WHICH THIS IMPROVEMENT IS TO BE CONSTRUCTED ARE SHOWN ON PLANS AND PROFILES. GRADE POINTS FOR TOP OF CURB, CENTER LINE OF STREET OR CENTER LINE OF ALLEY ARE SHOWN BY CIRCLES ON PROFILES. AT ALL POINTS BETWEEN DESIGNATED POINTS THE GRADE SHALL BE ESTABLISHED SO AS TO CONFORM TO A STRAIGHT LINE BETWEEN SAID DESIGNATED POINTS  
 ELEVATIONS ARE IN FEET ABOVE U.S.C.S. DATUM OR MEAN SEA LEVEL.  
 THIS DRAWING AND THE DATA HEREON ARE HEREBY MADE A PART OF THE SPECIFICATIONS. WORK SHALL BE CONSTRUCTED ACCORDING TO SPECIFICATIONS ON FILE IN THE OFFICE OF THE COUNTY ENGINEER AND SHALL BE PROSECUTED ONLY IN THE PRESENCE OF THE COUNTY ENGINEER.  
 BEFORE WORK CAN BE STARTED THE CONTRACTOR MUST OBTAIN A PERMIT TO EXCAVATE IN COUNTY STREETS FROM THE L.A. COUNTY ROAD DEPT. 211 SOUTH MAIN ST. AND MAKE A DEPOSIT WITH THE COUNTY ENGINEER 225 L.A. CO. ENGINEER BLDG. SUFFICIENT TO COVER THE COST OF CONSTRUCTION INSPECTION AND RECORD PLANS.

COUNTY OF LOS ANGELES, CALIFORNIA

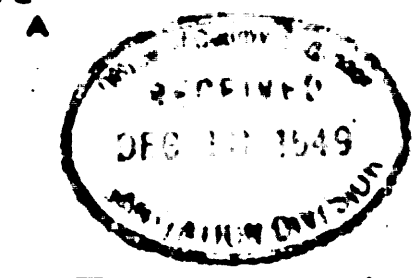
APPROVED FOR COLLECTION OF LIQUID INDUSTRIAL WASTE

BY *W. J. ...*  
 INDUSTRIAL WASTE ENGINEER  
 OFFICE OF COUNTY ENGINEER

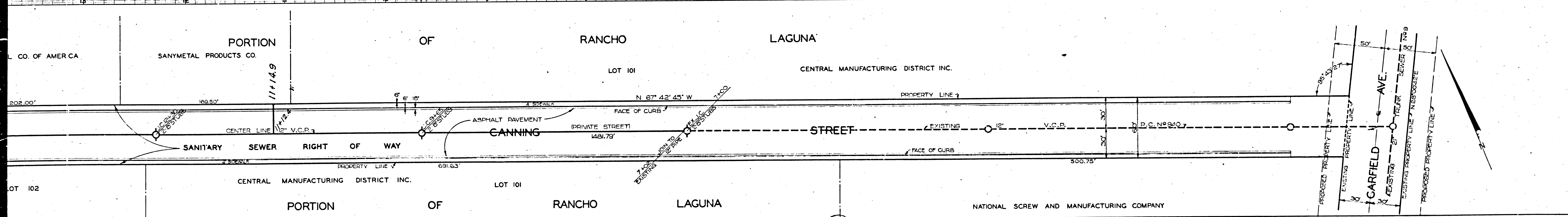
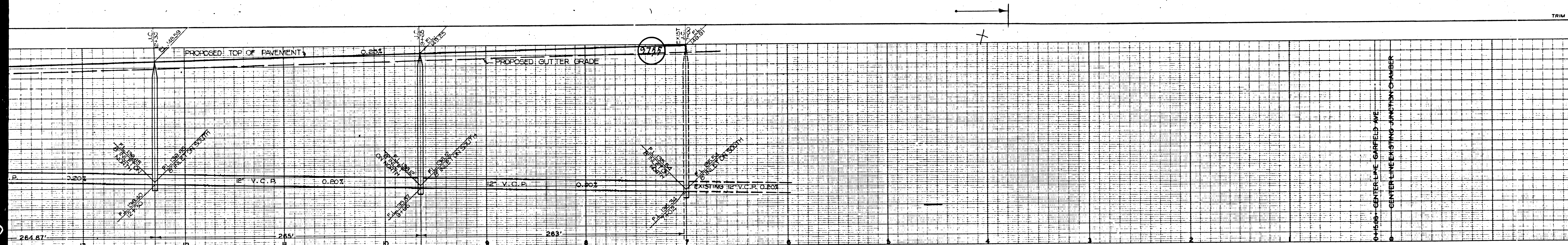
APPROVED *[Signature]*  
 CHIEF DEPUTY COUNTY ENGINEER

APPROVED *[Signature]*  
 ACTING CHIEF ENGINEER OF COUNTY  
 SANITATION DISTRICT NO. 2

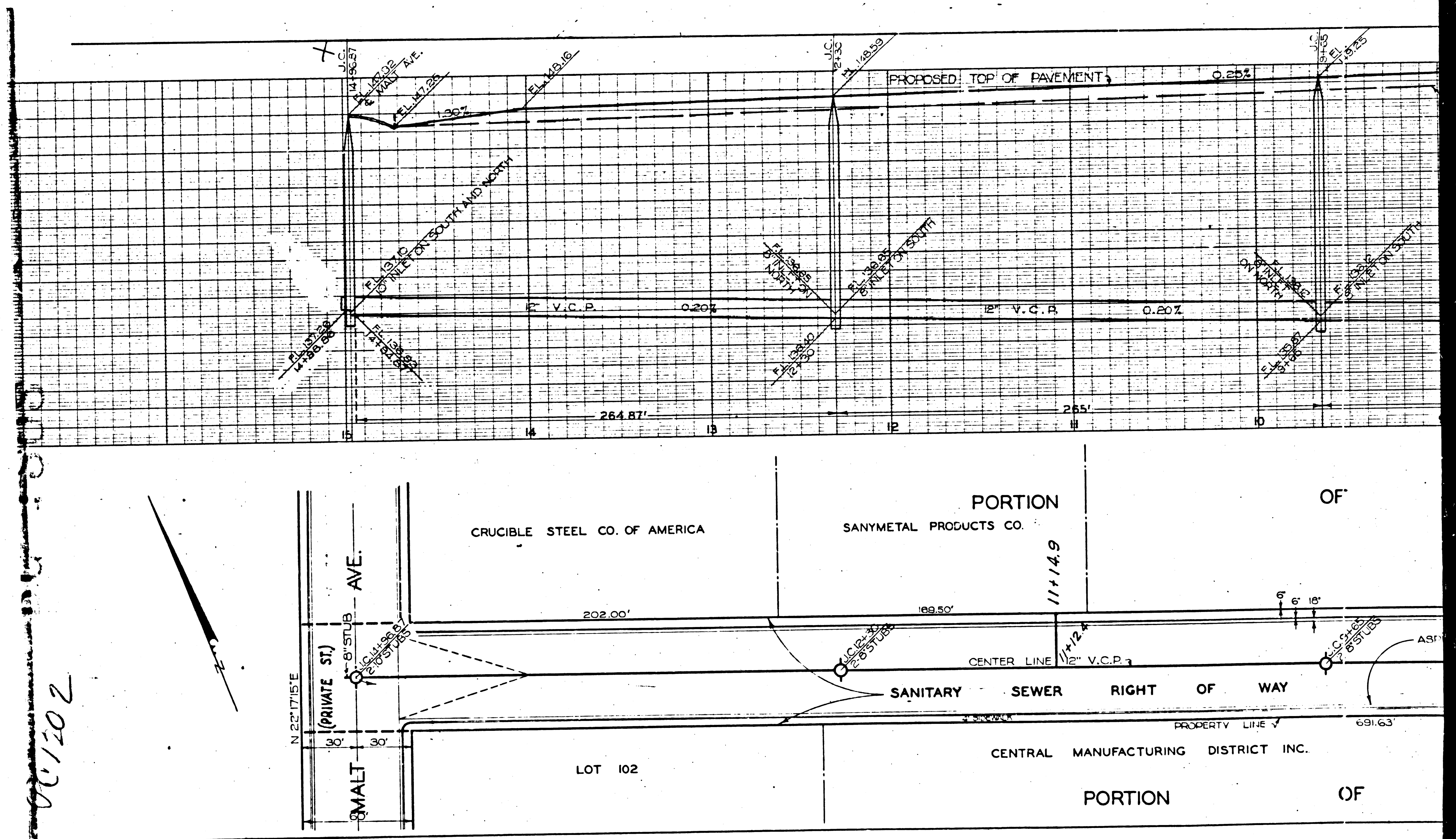
CHECKED BY *[Signature]* Dec 6, 1949  
 OFFICE OF COUNTY ENGINEER REG. C.E. NO. 6322



CD



42



001102  
 ③