

10.24

USE STANDARD STRENGTH PIPE
 USE CEMENT MORTAR FOR ALL VITRIFIED CLAY PIPE JOINTS
 REINFORCE ALL TRENCH WITH CURB EXTERIOR TO MEET LOS ANGELES COUNTY ROAD DEPT. REQUIREMENTS
 CONSTRUCT HOUSE CONNECTIONS WITH INVERT AT PROPERTY LINE
 1 FT. BELOW GRADE OF CENTER LINE OF ALLEY
 ENCASE FOUR FEET OF SEWER AT POINTS OF INTERFERENCE WITH POLES OR ALL STRUCTURES SHALL BE BRICK SEWER STRUCTURES 6'-0" DIA.
 Provide manholes on the property lines or property lines produced at right angles to the sewer line of the center line of each structure.

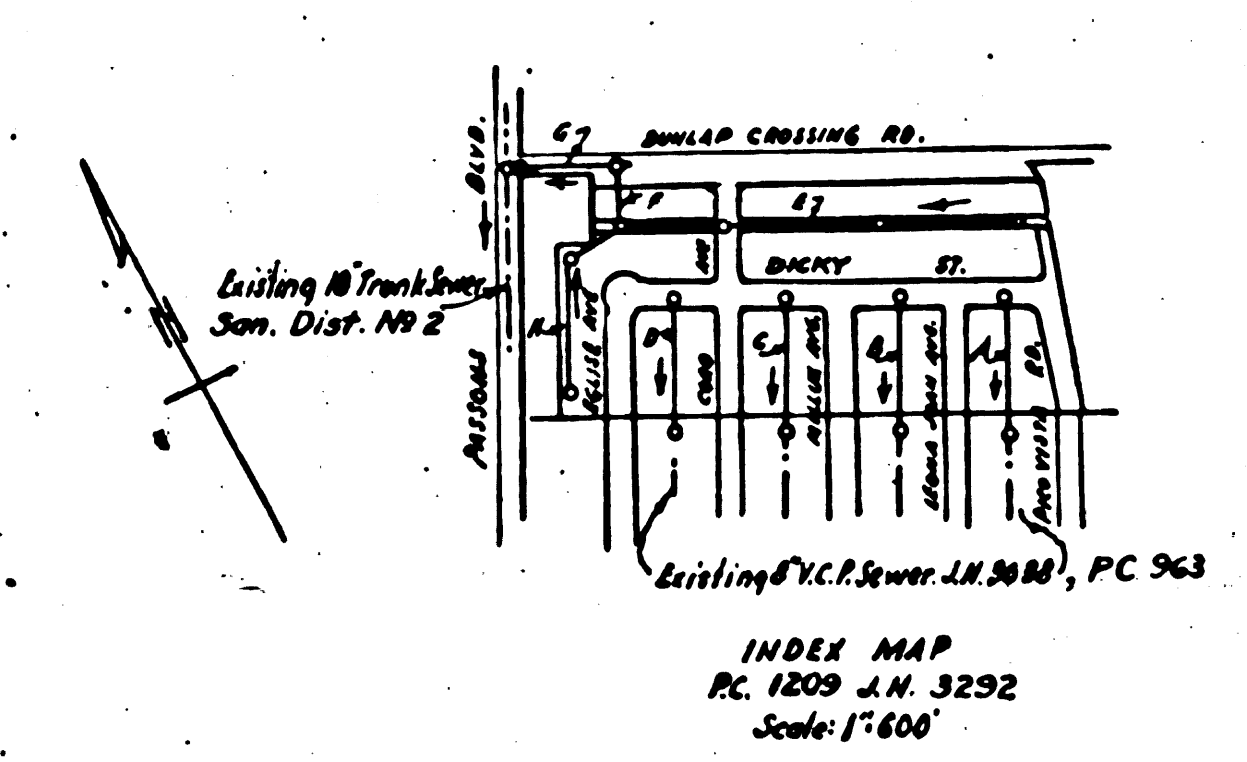
Note: No representation of the County Engineer will be made by any person of the work shown on this plan unless such person shall furnish the County Engineer with a certificate of approval of the work shown on this plan and shall provide for the cost of their proper inspection and construction of the work shown on this plan. No variations shall be made in this plan without approval of the County Engineer.

PROFILE, ALIGNMENT AND GRADE OF
SANITARY SEWERS
 TO BE CONSTRUCTED IN
TRACT NO. 16062

PRIVATE CONTRACT NO. 1209
 W.S. 36
 Nov. 1948

ONE SHEET

PREPARED IN THE OFFICE OF
LEONARD H. GOWDY
 COUNTY ENGINEER
 REG. C.E. NO. 4813



FOR LEGEND
 SEE PLAN NO. S-64

NOTE: GRADES TO WHICH THIS IMPROVEMENT IS TO BE CONSTRUCTED ARE SHOWN ON PLAN AND PROFILE GRADE POINTS FOR TOP OF CURB, CENTER LINE OF STREET OR CENTER LINE OF ALLEY ARE SHOWN BY CIRCLES ON PROFILE. AT ALL POINTS BETWEEN DESIGNATED POINTS THE GRADE SHALL BE ESTABLISHED SO AS TO CONFORM TO A STRAIGHT LINE DRAWN BETWEEN SAID DESIGNATED POINTS. ELEVATIONS ARE IN FEET ABOVE U.S.S. OR MEAN SEA LEVEL. THIS DRAWING AND DATA HEREON ARE HEREBY MADE A PART OF THE SPECIFICATIONS. BEFORE WORK CAN BE STARTED THE CONTRACTOR MUST OBTAIN A PERMIT TO OCCUPY IN COUNTY STREETS FROM THE L.A. COUNTY ROAD DEPT., 211 S. MAIN ST., AND MAKE A DEPOSIT WITH THE COUNTY ENGINEER 800 LOS ANGELES COUNTY ENGINEERING BLDG., SUFFICIENT TO COVER THE COST OF CONSTRUCTION INSPECTION AND RECORD PLANS.

APPROVAL OF THIS PLAN BY THE COUNTY OF LOS ANGELES DOES NOT CONSTITUTE A REPRESENTATION AS TO THE ACCURACY OF THE LOCATION OR THE EXISTENCE OR NON-EXISTENCE OF ANY UNDERGROUND UTILITY PIPE OR STRUCTURE WITHIN THE LIMITS OF THIS PROJECT.

COUNTY OF LOS ANGELES, CALIFORNIA

APPROVED COUNTY ENGINEER
Leonard H. Gowdy

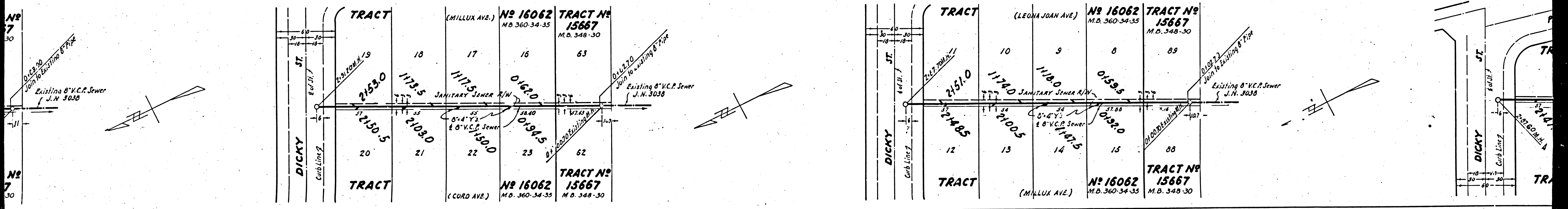
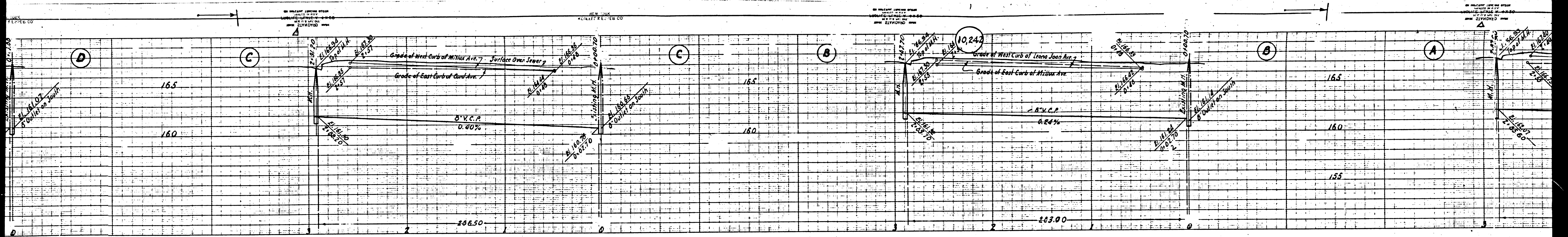
APPROVED CHIEF TRUSTEE OF COUNTY
 SANITATION DIST. NO. 2
Arthur W. Brown

CHECKED BY: T. R. Weston JAN 26 1950
 OFFICE OF COUNTY ENGINEER, 216 C.E. NO. 7103

Check 1-6-50 W. L. L. L.

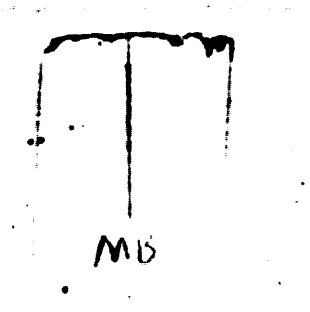
CO

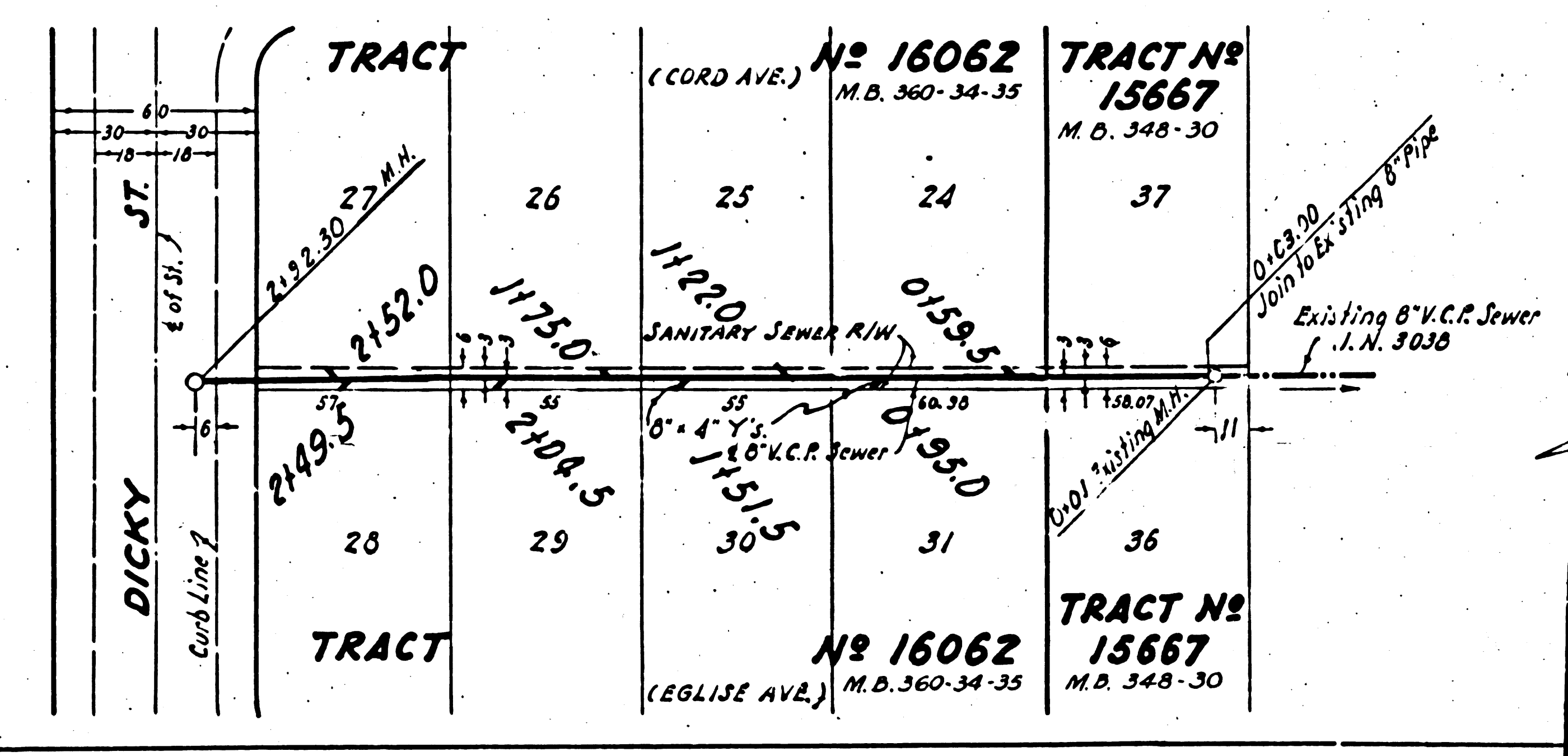
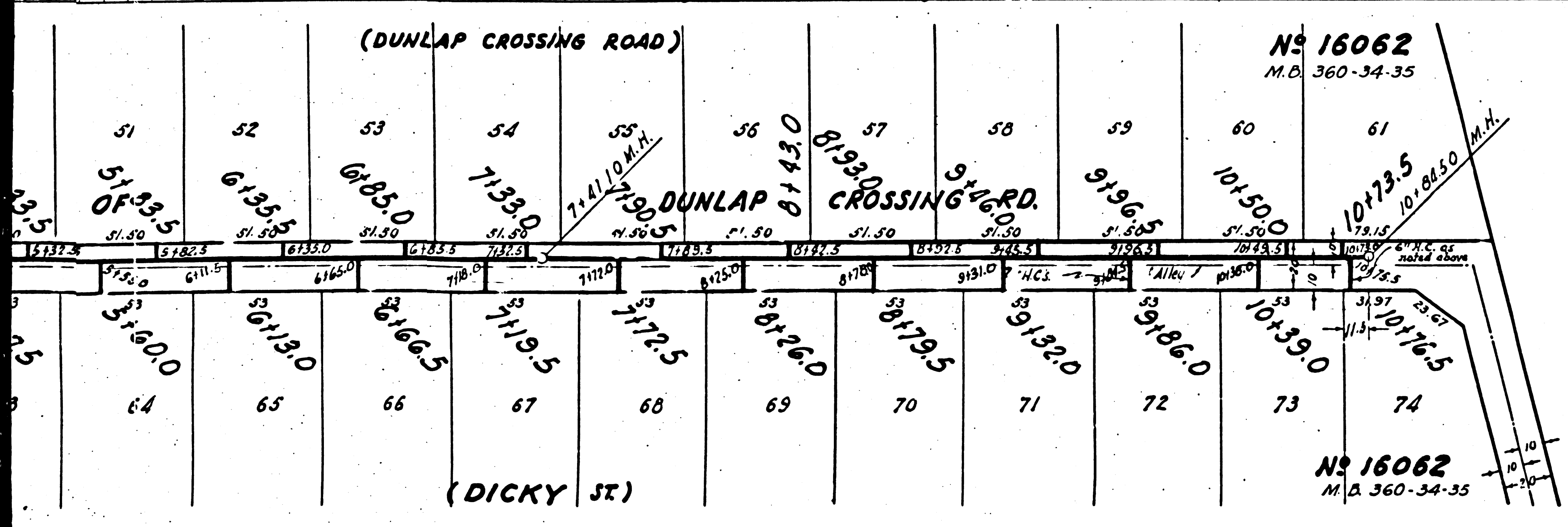
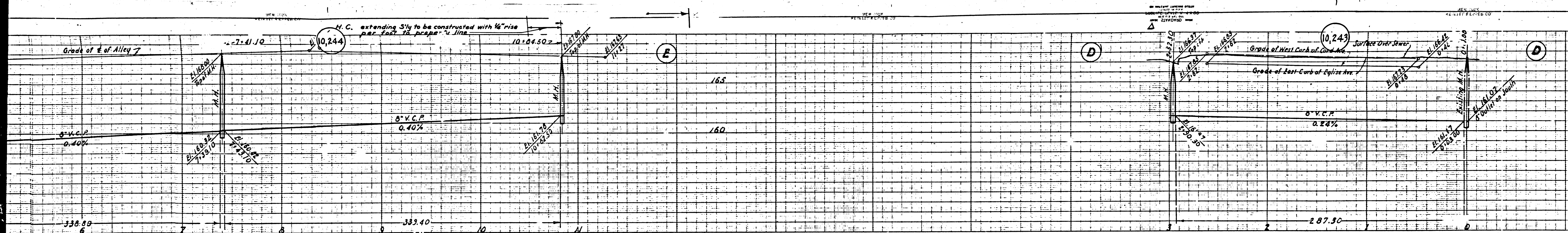
BO 1508



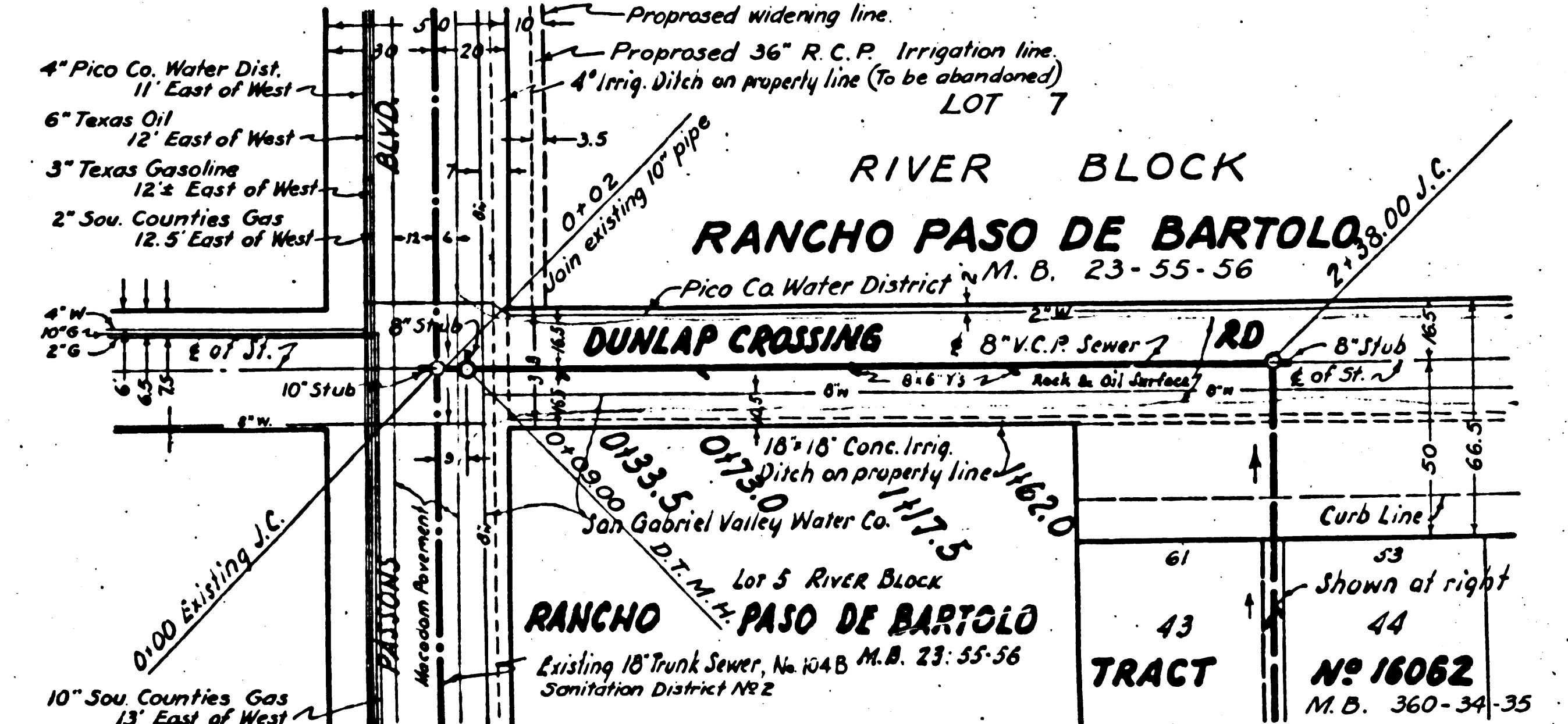
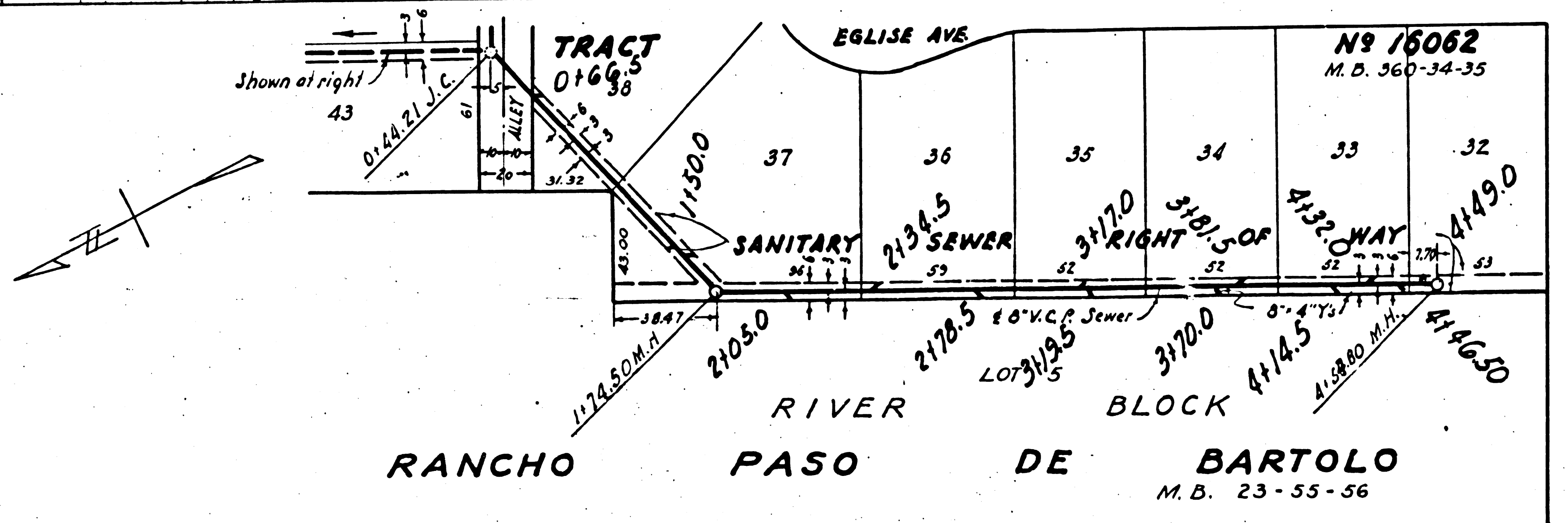
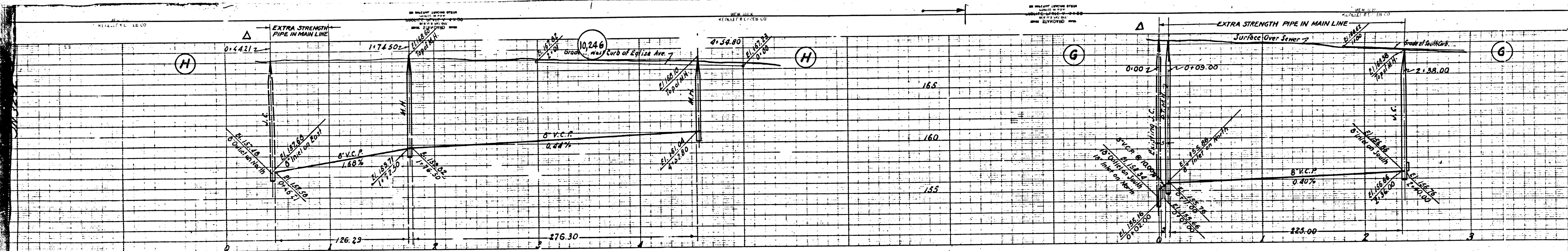
②

M-3





③



PC 1209
M 3500

(5)