

9699 Elevation 77.45
at Ave - Clark Ave.
Proposed Sewer Line of 8\"/>

ALL STRUCTURES SHALL BE BRICK OR CONCRETE
CONSTRUCTION SHALL BE IN ACCORDANCE WITH THE
COUNTY ROAD DEPT. REQUIREMENTS
CONSTRUCT UNDER CONNECTIONS WITH 4\"/>

NOTE:
The representation of the County Engineer will pertain to any portion of the work
The owner of the work shall be responsible for the accuracy of the data furnished
and shall be liable for any errors or omissions in the drawings and specifications
which may be made in the execution of the work by the contractor or his subcontractors
We warrant that the plans are correct as shown on the drawings and specifications.

1211 1 A

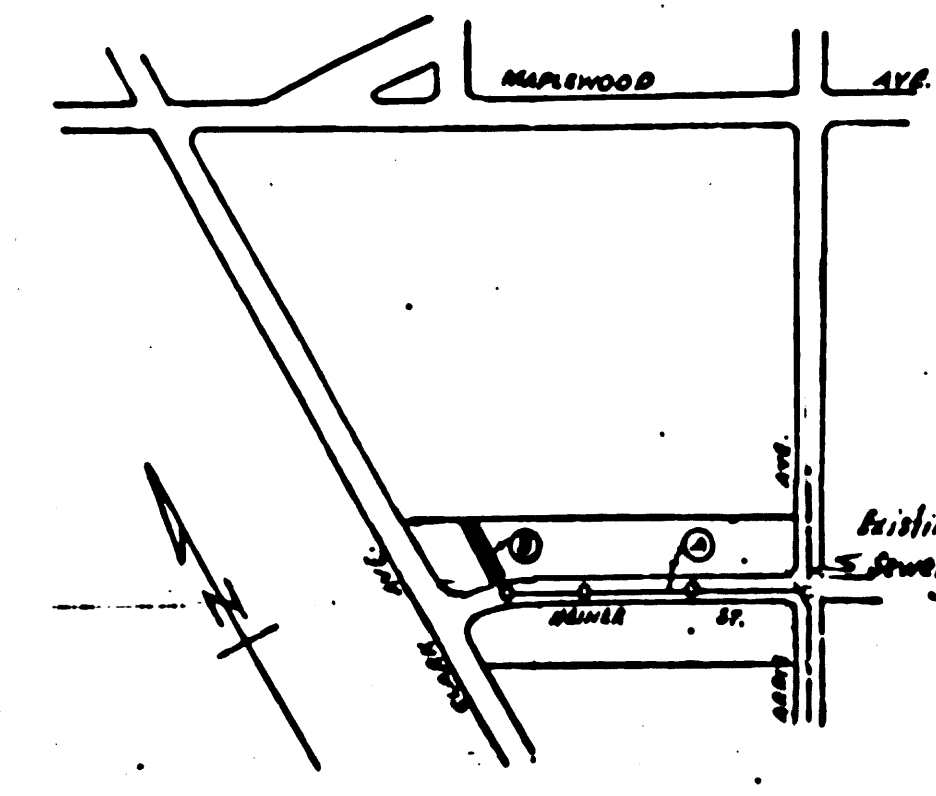
PROPOSED ALIGNMENT AND GRADE OF
SANITARY SEWERS
TO BE CONSTRUCTED IN
HEINER STREET
BETWEEN ARDIS AVE AND FIRST ALLEY WEST OF CLARK AVE.
FIRST ALLEY EAST OF CLARK AVENUE
BETWEEN HEINER ST AND HEINERLY LINE OF TRACT NO. 17300

PRIVATE CONTRACT NO. 17111
SHEET 31

SCALE: VERT. 1" = 4'
HORIZ. 1" = 40'

ONE SHEET
MAY 1949

PREPARED IN THE OFFICE OF
G. E. YAT
CIVIL ENGINEER
FILE NO. 17300



FOR LEGEND
SEE PLAN NO. 3-64

NOTE:
GRADES TO WHICH THIS IMPROVEMENT IS TO BE CONSTRUCTED ARE SHOWN ON PLAN AND PROFILE.
GRADE POINTS FOR TOP OF CURB, CENTER LINE OF STREET OR CENTER LINE OF ALLEY ARE SHOWN BY
CIRCLES ON PROFILE. AT ALL POINTS BETWEEN DESIGNATED POINTS THE GRADE SHALL BE ESTABLISHED
SO AS TO CORRESPOND TO A STRAIGHT LINE DRAWN BETWEEN SAID DESIGNATED POINTS.
ELEVATIONS ARE IN FEET ABOVE U.S.S. OF MEAN SEA LEVEL.
THIS DRAWING AND THE DATA HEREON ARE HEREBY MADE A PART OF THE SPECIFICATIONS
WORK SHALL BE CONSTRUCTED ACCORDING TO SPECIFICATIONS ON FILE IN THE OFFICE OF THE COUNTY
ENGINEER AND SHALL BE PROSECUTED UNDER THE PRESENCE OF THE COUNTY ENGINEER.
BEFORE WORK CAN BE STARTED THE CONTRACTOR MUST OBTAIN A PERMIT TO EXCAVATE IN COUNTY
STREETS FROM THE L.A. COUNTY ROAD DEPT. HIS MANUAL IS, AND OBTAIN A PERMIT WITH THE COUNTY
ENGINEER, BY THE L.A. COUNTY ENGINEERING BUREAU, SUFFICIENT TO COVER THE COST OF
CONSTRUCTION INSPECTION AND RECORD PLANS.
APPROVAL OF THIS PLAN BY THE COUNTY OF LOS ANGELES DOES NOT CONSTITUTE A REPRESENTATION
AS TO THE ACCURACY OF THE LOCATION OF, OR THE EXISTENCE OR NON-EXISTENCE OF, ANY UNDERGROUND UTILITY,
PIPE OR STRUCTURE WITHIN THE LIMITS OF THIS PROJECTS.

COUNTY OF LOS ANGELES-CALIFORNIA

APPROVED: [Signature]
COUNTY ENGINEER

APPROVED: [Signature]
ACTING COUNTY ENGINEER OF COUNTY
SANITARY DIST. NO. 2

DEC 1 1949
OFFICE OF COUNTY ENGINEER - 415.67 NO. 4322

CHECKED BY: [Signature] Dec 1 1949
OFFICE OF COUNTY ENGINEER - 415.67 NO. 4322

PC 1511