

TRIM LINE 2

**NOTE:**  
THE REPRESENTATIVE OF THE COUNTY ENGINEER WILL SURVEIL OR LAY OUT ANY SECTION OF THE WORK.  
THE OWNER OR HIS AUTHORIZED REPRESENTATIVE SHALL FURNISH THE COUNTY ENGINEER WITH GRADE SHEETS AND STAKES FOR ALL HOUSE CONNECTIONS AND Y-BRANCHES AND SHALL PROVIDE STAKES FOR THEM AT THEIR PROPER LOCATIONS WITH STATIONING PLAINLY MARKED. ANY CHANGE OF LOCATION SHALL BE REQUESTED IN WRITING BY THE OWNER OR HIS REPRESENTATIVE.  
NO REVISIONS SHALL BE MADE IN THESE PLANS WITHOUT APPROVAL OF THE COUNTY ENGINEER.

**NOTE:**  
THE EXISTENCE AND LOCATION OF ANY UNDERGROUND UTILITY PIPES OR STRUCTURES SHOWN ON THESE PLANS ARE FROM THE BEST INFORMATION AVAILABLE AND THE ENGINEERING SERVICE CORPORATION ASSUMES NO RESPONSIBILITY BEYOND THE INFORMATION FURNISHED ON THESE APPROVED PLANS.

- USE STANDARD MANHOLE FRAMES AND COVERS, 24" DIA.
- USE STANDARD STREET PAVEMENT AS NOTED.
- USE CEMENT MORTAR FOR ALL POINTED CLAY PIPE JOINTS.
- RESURFACE ALL DRIVEWAYS WHEN PAVED AREA TO MEET L.A. COUNTY SPECIFICATIONS.
- PROTECT ALL UTILITIES AT POINTS OF INTERFERENCE WITH CONSTRUCTION.
- CONSTRUCT TOPS OF ALL STRUCTURES IN EXCESS OF 10' TO ABOUT 15' ABOVE GROUND.
- ALL STRUCTURES SHALL BE BUILT SEWER SYSTEMS PER L.A. COUNTY SPECIFICATIONS.
- PROVIDE STAKES ON THE PROPERTY LINES OR PROPERTY LINES (PRODUCED) AT RIGHT ANGLES TO THE SEWER LINE AT THE CENTER LINE OF EACH PARCEL.
- A PERMIT MUST BE OBTAINED FROM THE STATE OF CALIFORNIA DIVISION OF HIGHWAYS, 120 S. SHAW ST. AFTER MAKING THE DEPOSIT WITH THE COUNTY ENGINEER, FOR THE HIGHWAY CROSSING AT PIONEER BLVD.

**PROFILE ALIGNMENT AND GRADE OF  
SANITARY SEWERS  
TO BE CONSTRUCTED IN  
ROSECRANS AVENUE  
BETWEEN PIONEER BLVD. AND SYLVANWOOD AVE.**

PRIVATE CONTRACT NO. 1211  
W. S. 35  
SHEET 1 OF 7 SHEETS  
SCALE: VERT. 1" = 4'  
HORIZ. 1" = 40'  
JAN 1950  
PREPARED IN THE OFFICES OF  
ENGINEERING SERVICE CORPORATION

BY: *E. J. King*  
REG. C. E. NO. 1481

FOR LEGEND  
SEE PLAN NO. 54-64

**NOTE:**  
GRADES TO WHICH THIS IMPROVEMENT IS TO BE CONSTRUCTED ARE SHOWN ON PLANS AND PROFILE. GRADE POINTS FOR CURVES OR CENTER LINE OF AVENUE ARE SHOWN BY CIRCLES ON PLAN AND AT ALL POINTS BETWEEN GRADE POINTS THE GRADE SHALL BE ESTABLISHED SO AS TO CONFORM TO A GRADE OF THE DESIGNER'S BEST JUDGMENT AND DESIGNATED POINTS. ELEVATIONS ARE IN FEET ABOVE MEAN SEA LEVEL AND MEAN SEA LEVEL.  
THIS DRAWING AND THE EXPLANATION ARE HEREBY MADE A PART OF THE SPECIFICATIONS. WHEN SHALL BE CONSIDERED ACCORDING TO SPECIFICATIONS ON FILE IN THE OFFICE OF THE COUNTY ENGINEER AND SHALL BE PROVIDED TO THE CONTRACTOR IN THE OFFICE OF THE COUNTY ENGINEER. FROM WORK UNDER CONTRACT NO. 1211 OF AN A PERMIT TO EXCAVATE IN THE COUNTY ENGINEER, BY COUNTY ENGINEERING SERVICE CORPORATION TO COVER THE COST OF CONSTRUCTION. SPECIFICATIONS ARE ENCLOSED P. 11 & 12.  
APPROVAL OF THIS PLAN BY THE COUNTY OF LOS ANGELES DOES NOT CONSTITUTE A REPRESENTATION AS TO THE ACCURACY OF THE INFORMATION ON WHICH THIS PLAN IS BASED. THIS NOTE APPLIES TO ALL SHEETS OF THIS PROJECT.  
OFFICE OF COUNTY ENGINEER, 110 N. HOPLAND ST., LOS ANGELES, CALIF.

**ENGINEERING SERVICE CORPORATION**  
1127 W. WASHINGTON BLVD.  
LOS ANGELES 15, CALIF.

REVISIONS	TRACED BY: <i>Gales</i>
	DESIG. BY: <i>Gales</i>
	CND. BY: <i>Gales</i>
	SUBMITTED BY: <i>M. Kelly</i>

6118 STRUCTURES CK'D  
W. O. NO. 5950-3 DWG NO. SP 1-3-1 DATE JAN 1950 SCALE 1" = 40' P. 11 & 12

APPROVED: *E. J. King*  
COUNTY ENGINEER

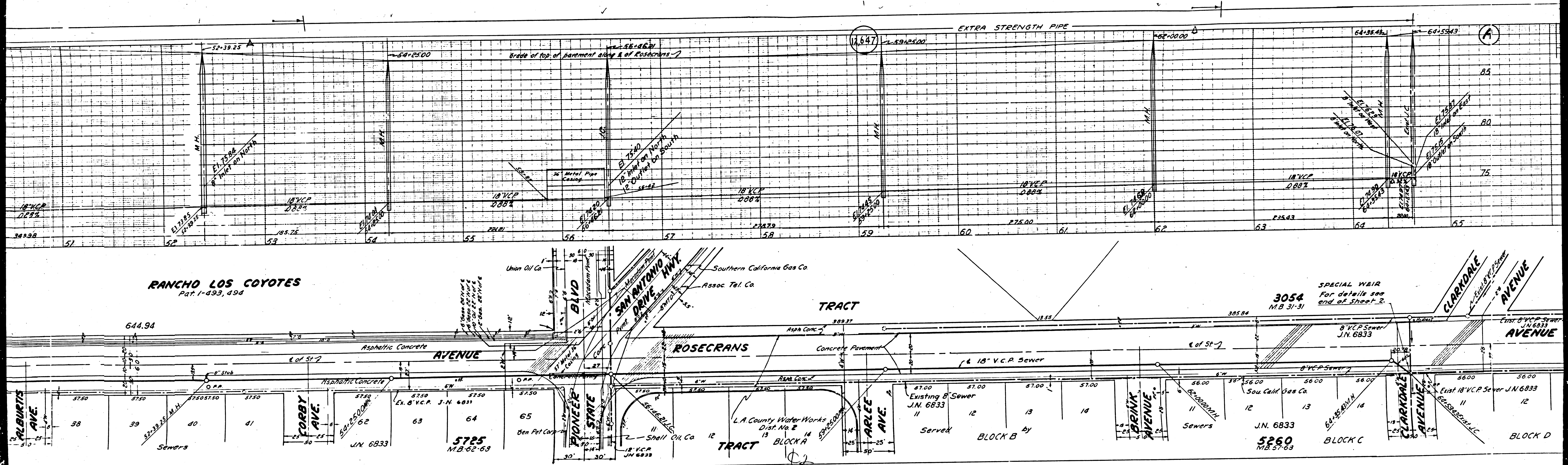
APPROVED: *James T. Roston*  
SANITATION DISTRICT NO. 18

REVISED 3-17-50  
Line moved to South side between Pioneer and Sylvanwood

REVISION CHECKED: *T. Roston* 3-17-50  
OFFICE OF COUNTY ENGINEER, REG. C. E. NO. 7103

MAILED 30 1950

Approved 5-18-51 *W. J. ...*



**RANCHO LOS COYOTES**  
Pat. 1-493,494

**TRACT**

**ROSECRANS AVENUE**

**TRACT**

**AVENUE**

**BLOCK D**

**BLOCK C**

**BLOCK B**

**Sewers**

J.N. 6833

5725  
M.B. 62-63

Ben Pet Corp

Shall Oil Co

L.A. County Water Works  
Dist. No. 2

Existing B Sewer  
J.N. 6833

Served

Sewers

J.N. 6833

5260  
M.B. 57-63

Exist 18" V.C.P. Sewer  
J.N. 6833

**3054**  
M.B. 31-31

**SPECIAL WEIR**  
For details see  
end of sheet 2.

8" V.C.P. Sewer  
J.N. 6833

Sou. Calif. Gas Co.

8" V.C.P. Sewer  
J.N. 6833

Exist 18" V.C.P. Sewer  
J.N. 6833

8" V.C.P. Sewer  
J.N. 6833

Exist 18" V.C.P. Sewer  
J.N. 6833

8" V.C.P. Sewer  
J.N. 6833

Exist 18" V.C.P. Sewer  
J.N. 6833

8" V.C.P. Sewer  
J.N. 6833

Exist 18" V.C.P. Sewer  
J.N. 6833

8" V.C.P. Sewer  
J.N. 6833

Exist 18" V.C.P. Sewer  
J.N. 6833

8" V.C.P. Sewer  
J.N. 6833

Exist 18" V.C.P. Sewer  
J.N. 6833

8" V.C.P. Sewer  
J.N. 6833

Exist 18" V.C.P. Sewer  
J.N. 6833

8" V.C.P. Sewer  
J.N. 6833

Exist 18" V.C.P. Sewer  
J.N. 6833

8" V.C.P. Sewer  
J.N. 6833

Exist 18" V.C.P. Sewer  
J.N. 6833

8" V.C.P. Sewer  
J.N. 6833

Exist 18" V.C.P. Sewer  
J.N. 6833

8" V.C.P. Sewer  
J.N. 6833

Exist 18" V.C.P. Sewer  
J.N. 6833

8" V.C.P. Sewer  
J.N. 6833

Exist 18" V.C.P. Sewer  
J.N. 6833

8" V.C.P. Sewer  
J.N. 6833

Exist 18" V.C.P. Sewer  
J.N. 6833

8" V.C.P. Sewer  
J.N. 6833

Exist 18" V.C.P. Sewer  
J.N. 6833

8" V.C.P. Sewer  
J.N. 6833

Exist 18" V.C.P. Sewer  
J.N. 6833

8" V.C.P. Sewer  
J.N. 6833

Exist 18" V.C.P. Sewer  
J.N. 6833

8" V.C.P. Sewer  
J.N. 6833

Exist 18" V.C.P. Sewer  
J.N. 6833

8" V.C.P. Sewer  
J.N. 6833

Exist 18" V.C.P. Sewer  
J.N. 6833

8" V.C.P. Sewer  
J.N. 6833

Exist 18" V.C.P. Sewer  
J.N. 6833

8" V.C.P. Sewer  
J.N. 6833

Exist 18" V.C.P. Sewer  
J.N. 6833

8" V.C.P. Sewer  
J.N. 6833

Exist 18" V.C.P. Sewer  
J.N. 6833

8" V.C.P. Sewer  
J.N. 6833

Exist 18" V.C.P. Sewer  
J.N. 6833

8" V.C.P. Sewer  
J.N. 6833

Exist 18" V.C.P. Sewer  
J.N. 6833

8" V.C.P. Sewer  
J.N. 6833

Exist 18" V.C.P. Sewer  
J.N. 6833

8" V.C.P. Sewer  
J.N. 6833

Exist 18" V.C.P. Sewer  
J.N. 6833

8" V.C.P. Sewer  
J.N. 6833

Exist 18" V.C.P. Sewer  
J.N. 6833

8" V.C.P. Sewer  
J.N. 6833

Exist 18" V.C.P. Sewer  
J.N. 6833

8" V.C.P. Sewer  
J.N. 6833

Exist 18" V.C.P. Sewer  
J.N. 6833

8" V.C.P. Sewer  
J.N. 6833

Exist 18" V.C.P. Sewer  
J.N. 6833

8" V.C.P. Sewer  
J.N. 6833

Exist 18" V.C.P. Sewer  
J.N. 6833

8" V.C.P. Sewer  
J.N. 6833

Exist 18" V.C.P. Sewer  
J.N. 6833

8" V.C.P. Sewer  
J.N. 6833

Exist 18" V.C.P. Sewer  
J.N. 6833

8" V.C.P. Sewer  
J.N. 6833

Exist 18" V.C.P. Sewer  
J.N. 6833

8" V.C.P. Sewer  
J.N. 6833

Exist 18" V.C.P. Sewer  
J.N. 6833

8" V.C.P. Sewer  
J.N. 6833

Exist 18" V.C.P. Sewer  
J.N. 6833

8" V.C.P. Sewer  
J.N. 6833

Exist 18" V.C.P. Sewer  
J.N. 6833

8" V.C.P. Sewer  
J.N. 6833

Exist 18" V.C.P. Sewer  
J.N. 6833

8" V.C.P. Sewer  
J.N. 6833

Exist 18" V.C.P. Sewer  
J.N. 6833

8" V.C.P. Sewer  
J.N. 6833

Exist 18" V.C.P. Sewer  
J.N. 6833

8" V.C.P. Sewer  
J.N. 6833

Exist 18" V.C.P. Sewer  
J.N. 6833

8" V.C.P. Sewer  
J.N. 6833

Exist 18" V.C.P. Sewer  
J.N. 6833

8" V.C.P. Sewer  
J.N. 6833

Exist 18" V.C.P. Sewer  
J.N. 6833

8" V.C.P. Sewer  
J.N. 6833

Exist 18" V.C.P. Sewer  
J.N. 6833

8" V.C.P. Sewer  
J.N. 6833

Exist 18" V.C.P. Sewer  
J.N. 6833

8" V.C.P. Sewer  
J.N. 6833

Exist 18" V.C.P. Sewer  
J.N. 6833

8" V.C.P. Sewer  
J.N. 6833

Exist 18" V.C.P. Sewer  
J.N. 6833

8" V.C.P. Sewer  
J.N. 6833

Exist 18" V.C.P. Sewer  
J.N. 6833

8" V.C.P. Sewer  
J.N. 6833

Exist 18" V.C.P. Sewer  
J.N. 6833

8" V.C.P. Sewer  
J.N. 6833

Exist 18" V.C.P. Sewer  
J.N. 6833

8" V.C.P. Sewer  
J.N. 6833

Exist 18" V.C.P. Sewer  
J.N. 6833

8" V.C.P. Sewer  
J.N. 6833

Exist 18" V.C.P. Sewer  
J.N. 6833

8" V.C.P. Sewer  
J.N. 6833

Exist 18" V.C.P. Sewer  
J.N. 6833

8" V.C.P. Sewer  
J.N. 6833

Exist 18" V.C.P. Sewer  
J.N. 6833

8" V.C.P. Sewer  
J.N. 6833

Exist 18" V.C.P. Sewer  
J.N. 6833

8" V.C.P. Sewer  
J.N. 6833

Exist 18" V.C.P. Sewer  
J.N. 6833

8" V.C.P. Sewer  
J.N. 6833

Exist 18" V.C.P. Sewer  
J.N. 6833

8" V.C.P. Sewer  
J.N. 6833

Exist 18" V.C.P. Sewer  
J.N. 6833

8" V.C.P. Sewer  
J.N. 6833

Exist 18" V.C.P. Sewer  
J.N. 6833

8" V.C.P. Sewer  
J.N. 6833

Exist 18" V.C.P. Sewer  
J.N. 6833

8" V.C.P. Sewer  
J.N. 6833

Exist 18" V.C.P. Sewer  
J.N. 6833

8" V.C.P. Sewer  
J.N. 6833

Exist 18" V.C.P. Sewer  
J.N. 6833

8" V.C.P. Sewer  
J.N. 6833

Exist 18" V.C.P. Sewer  
J.N. 6833

8" V.C.P. Sewer  
J.N. 6833

Exist 18" V.C.P. Sewer  
J.N. 6833

8" V.C.P. Sewer  
J.N. 6833

Exist 18" V.C.P. Sewer  
J.N. 6833

8" V.C.P. Sewer  
J.N. 6833

Exist 18" V.C.P. Sewer  
J.N. 6833

8" V.C.P. Sewer  
J.N. 6833

Exist 18" V.C.P. Sewer  
J.N. 6833

8" V.C.P. Sewer  
J.N. 6833

Exist 18" V.C.P. Sewer  
J.N. 6833

8" V.C.P. Sewer  
J.N. 6833

Exist 18" V.C.P. Sewer  
J.N. 6833

8" V.C.P. Sewer  
J.N. 6833

Exist 18" V.C.P. Sewer  
J.N. 6833

8" V.C.P. Sewer  
J.N. 6833

Exist 18" V.C.P. Sewer  
J.N. 6833

8" V.C.P. Sewer  
J.N. 6833

Exist 18" V.C.P. Sewer  
J.N. 6833

8" V.C.P. Sewer  
J.N. 6833

Exist 18" V.C.P. Sewer  
J.N. 6833

8" V.C.P. Sewer  
J.N. 6833

Exist 18" V.C.P. Sewer  
J.N. 6833

8" V.C.P. Sewer  
J.N. 6833

Exist 18" V.C.P. Sewer  
J.N. 6833

8" V.C.P. Sewer  
J.N. 6833

Exist 18" V.C.P. Sewer  
J.N. 6833

8" V.C.P. Sewer  
J.N. 6833

Exist 18" V.C.P. Sewer  
J.N. 6833

8" V.C.P. Sewer  
J.N. 6833

Exist 18" V.C.P. Sewer  
J.N. 6833

8" V.C.P. Sewer  
J.N. 6833

Exist 18" V.C.P. Sewer  
J.N. 6833

8" V.C.P. Sewer  
J.N. 6833

Exist 18" V.C.P. Sewer  
J.N. 6833

8" V.C.P. Sewer  
J.N. 6833

Exist 18" V.C.P. Sewer  
J.N. 6833

8" V.C.P. Sewer  
J.N. 6833

Exist 18" V.C.P. Sewer  
J.N. 6833

8" V.C.P. Sewer  
J.N. 6833

Exist 18" V.C.P. Sewer  
J.N. 6833

8" V.C.P. Sewer  
J.N. 6833

Exist 18" V.C.P. Sewer  
J.N. 6833

8" V.C.P. Sewer  
J.N. 6833

Exist 18" V.C.P. Sewer  
J.N. 6833

8" V.C.P. Sewer  
J.N. 6833

Exist 18" V.C.P. Sewer  
J.N. 6833

8" V.C.P. Sewer  
J.N. 6833

Exist 18" V.C.P. Sewer  
J.N. 6833

8" V.C.P. Sewer  
J.N. 6833

Exist 18" V.C.P. Sewer  
J.N. 6833

8" V.C.P. Sewer  
J.N. 6833

Exist 18" V.C.P. Sewer  
J.N. 6833

8" V.C.P. Sewer  
J.N. 6833

Exist 18" V.C.P. Sewer  
J.N. 6833

8" V.C.P. Sewer  
J.N. 6833

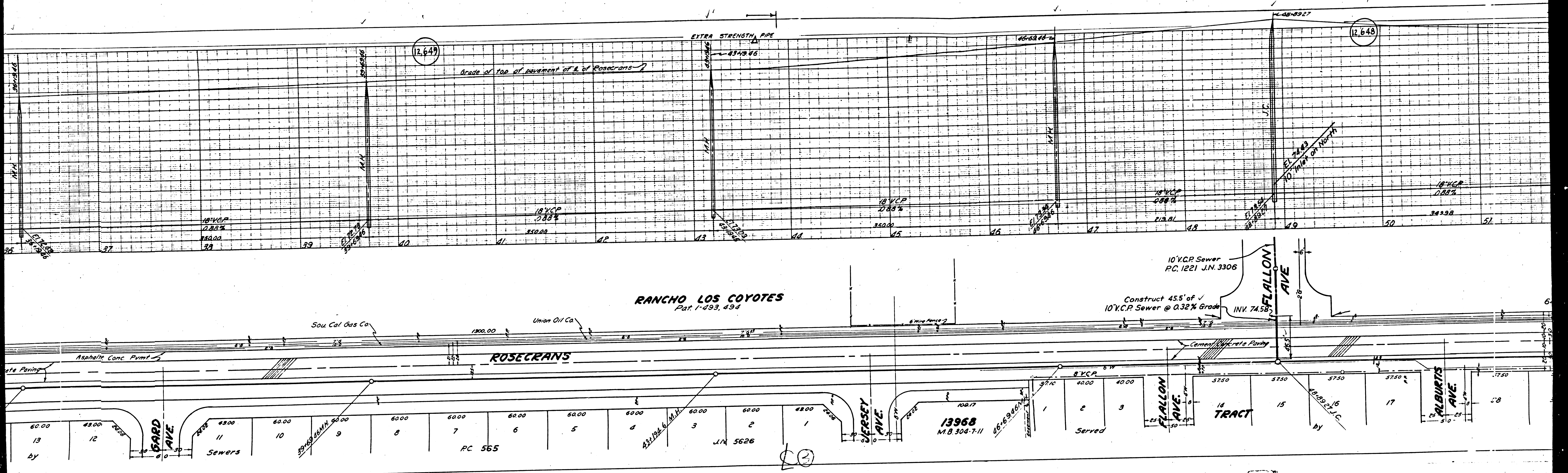
Exist 18" V.C.P. Sewer  
J.N. 6833

8" V.C.P. Sewer  
J.N. 6833

Exist 18" V.C.P. Sewer  
J.N. 6833

8" V.C.P. Sewer  
J.N. 6833

Exist 18" V.C.P. Sewer  
J.N. 6833



(12,649)

(12,648)

**RANCHO LOS COYOTES**  
Pat. 1-493, 494

**ROSECRANS**

10" V.C.P. Sewer  
P.C. 1221 J.N. 3306

Construct 455' of  
10" V.C.P. Sewer @ 0.32% Grade  
INV. 74.58'

**FLALLON AVE**

**JERSEY AVE**

**FLALLON AVE**

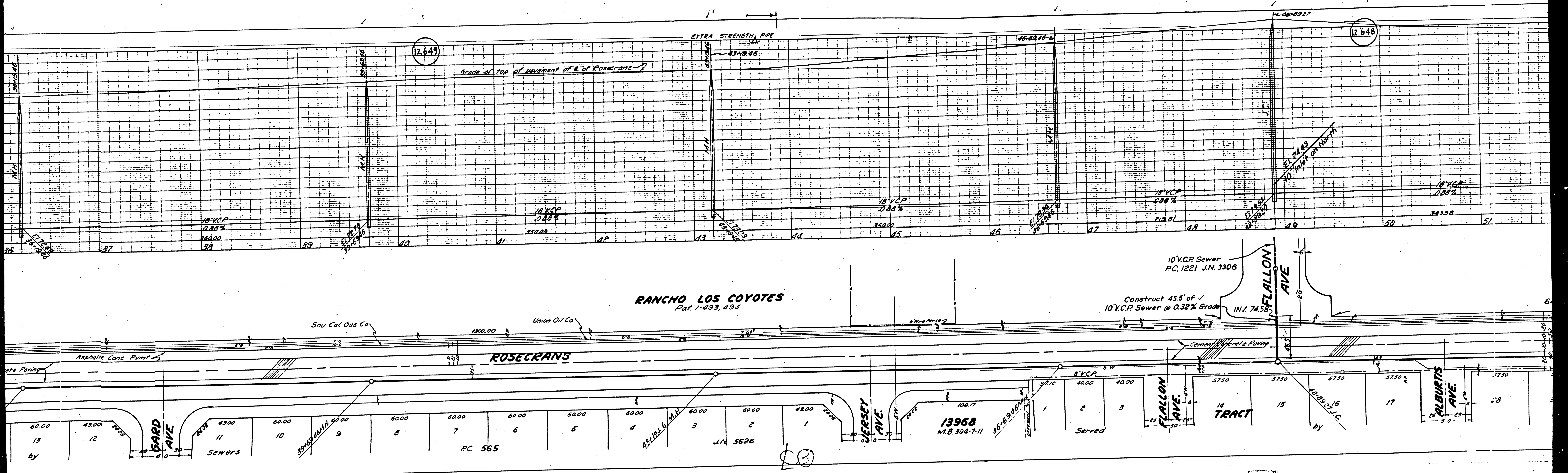
**ALBURYS AVE**

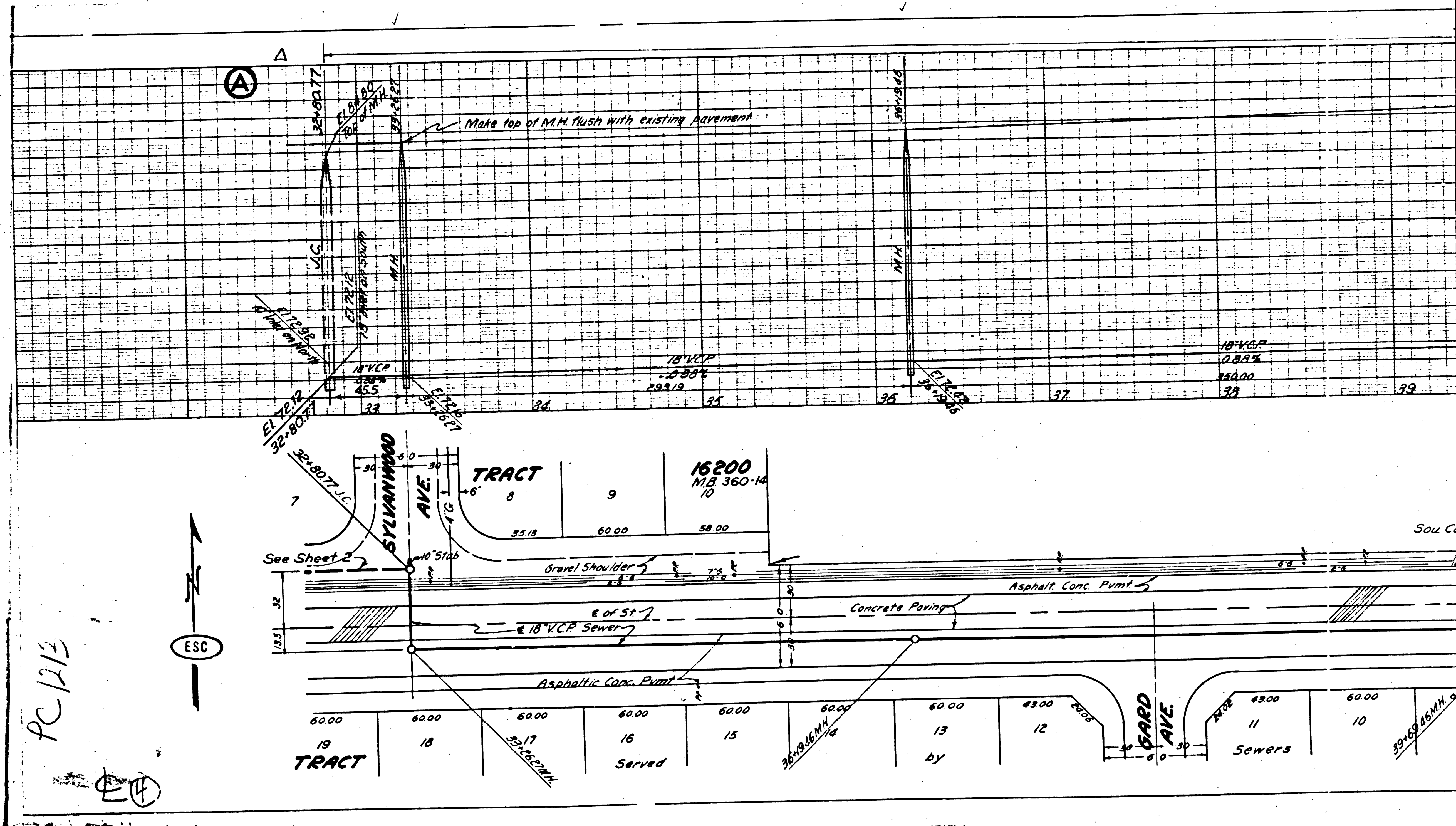
13968  
M.B. 304-7-11

14 TRACT

P.C. 565

J.N. 5626

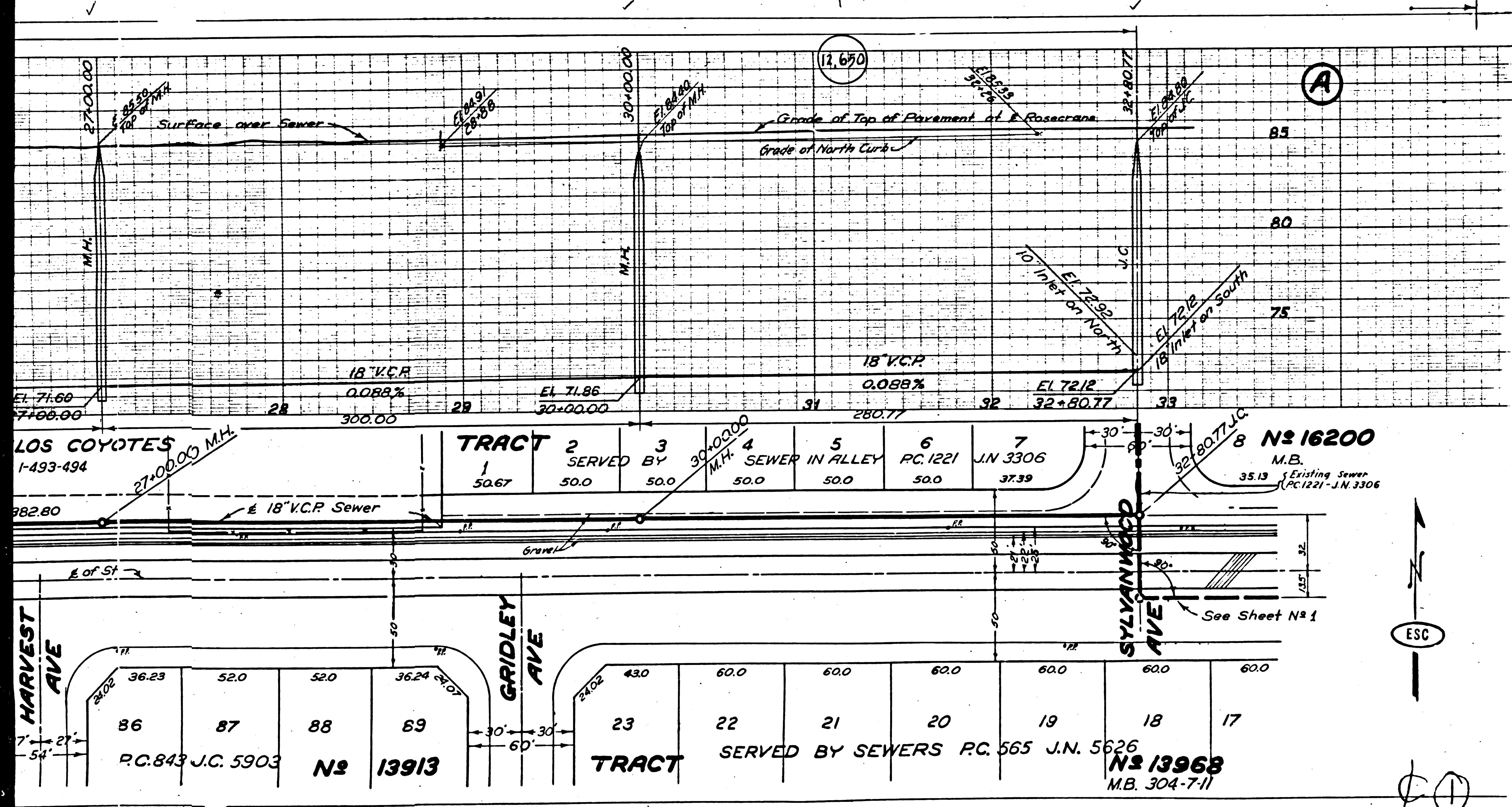




PC 1213

ESC

EF



**PROFILE ALIGNMENT AND GRADE OF  
SANITARY SEWERS  
TO BE CONSTRUCTED IN  
ROSECRANS AVENUE  
BETWEEN SYLVANWOOD AVENUE & 7162 FT.  
EAST OF STUDEBAKER ROAD**

PRIVATE CONTRACT NO. 1213  
 W.S. 33  
 SHEET 2 OF 7 SHEETS  
 SCALE: HORIZ. 1" = 40' VERT. 1" = 4'  
 JAN. 1950  
 PREPARED IN THE OFFICES OF  
**ENGINEERING SERVICE CORPORATION**

BY *E.P. K...*  
 1127 W. WASHINGTON BLVD.  
 LOS ANGELES 15, CALIF.

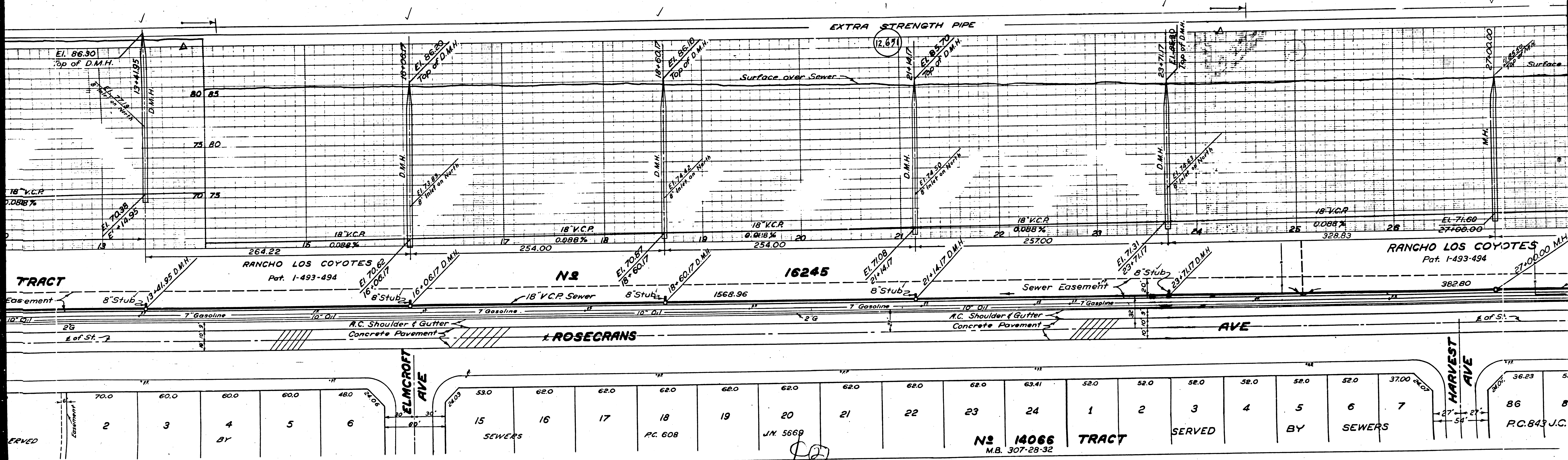
FOR RECORD  
 SEE PLAN NO. S-44  
 FOR CONSTRUCTION NOTES SEE SHEET 1

REVISIONS		TRACED BY <i>Gates</i>
Relocated Manhole to match sheet on previous and subsequent sheets	1/21/50	DES'G'D BY <i>Gates</i>
		CK'D BY <i>Siegel</i>
		SUBMITTED BY <i>M.J. Kelly</i>

COUNTY OF LOS ANGELES, CALIFORNIA  
 APPROVED: *[Signature]*  
 APPROVED: *[Signature]*  
 CHECKED: *J. T. Reardon* 1/27/50  
 OFFICE OF COUNTY ENGINEER, REG. C.E. NO. 7103

REVISED 3-17-50  
 Pump Station Relocated  
 REVISION CHECKED *J. T. Reardon* 3-21-50  
 OFFICE OF COUNTY ENGINEER, REG. C.E. NO. 7103

ESC  
 ESC



70.0	60.0	60.0	60.0	48.0	24.03	53.0	62.0	62.0	62.0	62.0	62.0	62.0	62.0	62.0	63.41	52.0	52.0	52.0	52.0	52.0	52.0	37.00	36.23	52.0		
2	3	4	5	6	ELMCROFT AVE	15	16	17	18	19	20	21	22	23	24	1	2	3	4	5	6	7	86	87		
						SEWERS										TRACT		SERVED		BY		SEWERS		R.C. 843 J.C.		

**N<sup>o</sup> 14066 TRACT**  
M.B. 307-28-32

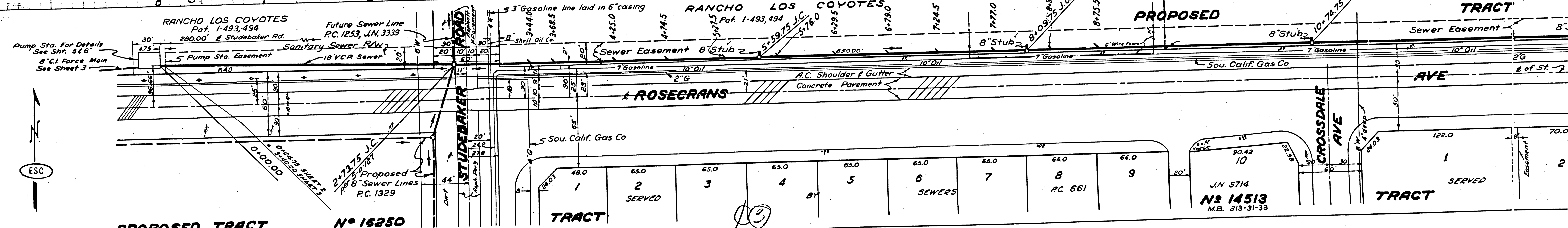
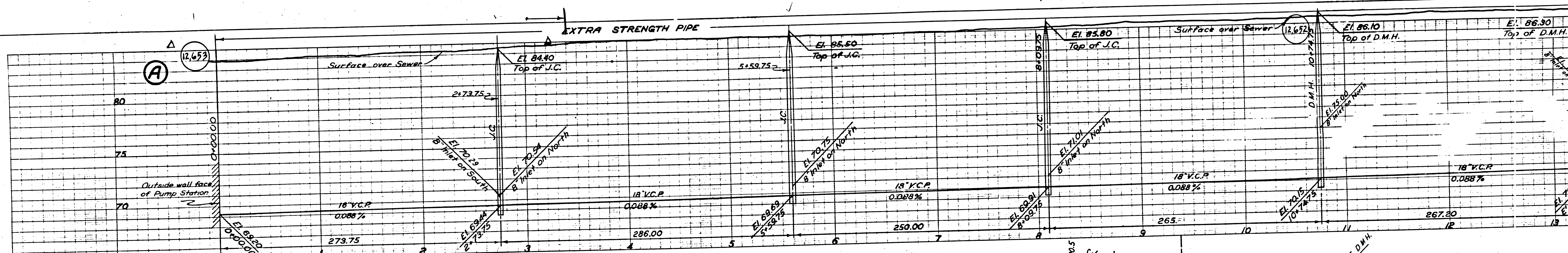
J.M. 5669

R.C. 608

SEWERS

BY

ERVED



PROPOSED TRACT N° 16250

TRACT

J.N. 5714  
N° 14513  
M.B. 313-31-33

TRACT

RANCHO LOS COYOTES Pat. 1-493,494

RANCHO LOS COYOTES Pat. 1-493,494

Future Sewer Line P.C. 1253, J.N. 3339

ROSECRANS

PROPOSED

TRACT

AVE

CROSSDALE AVE

Pump Sta. For Details See Sht. 566

ESC

18\"/>

(A)

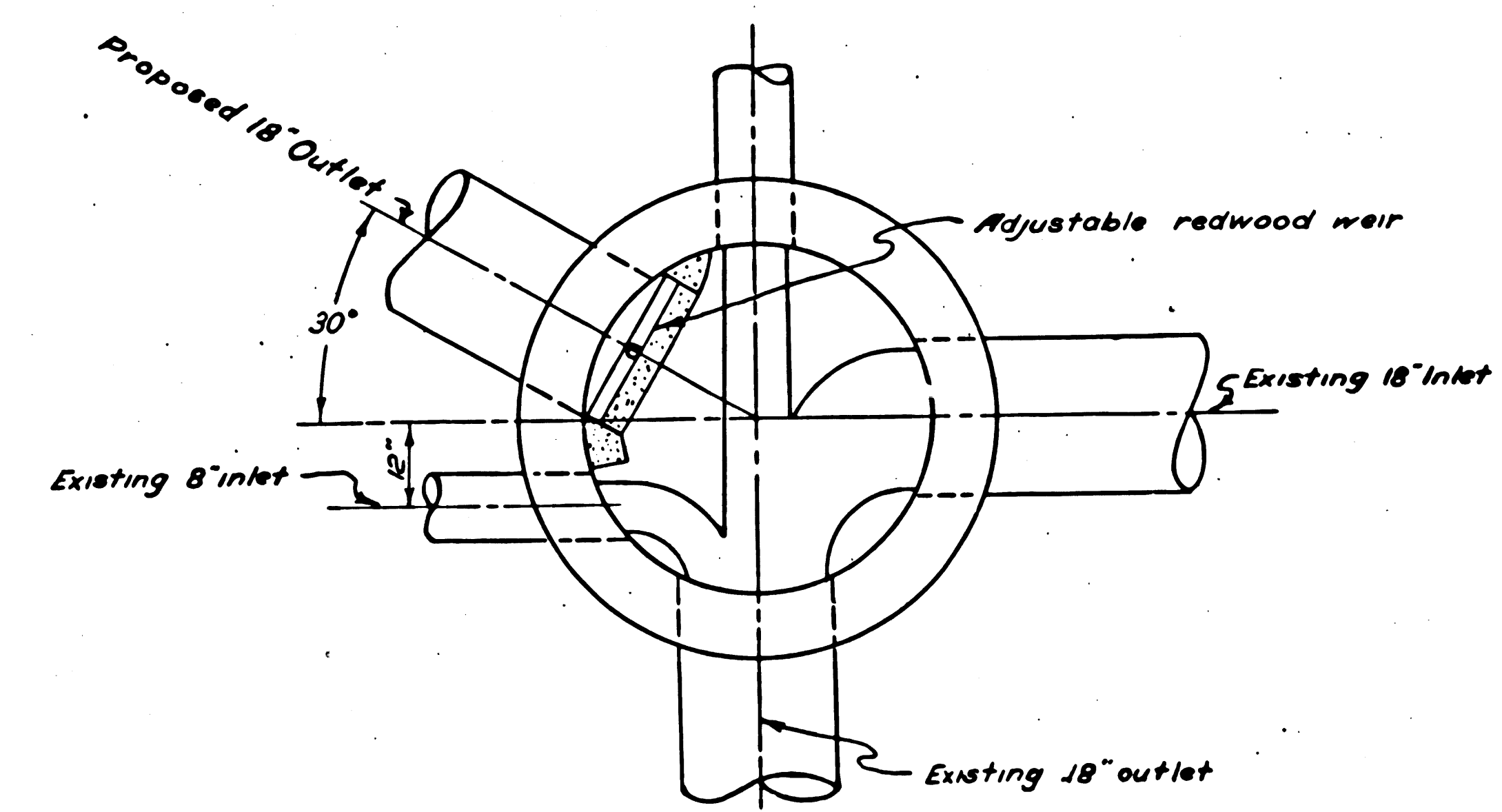
(2)

1

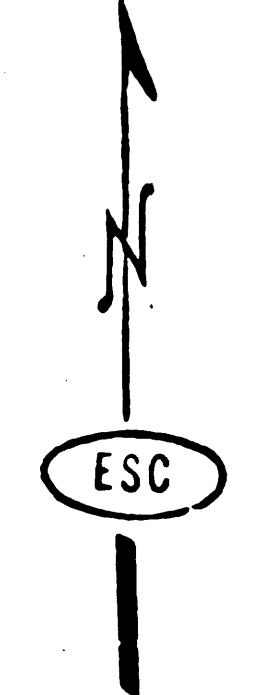
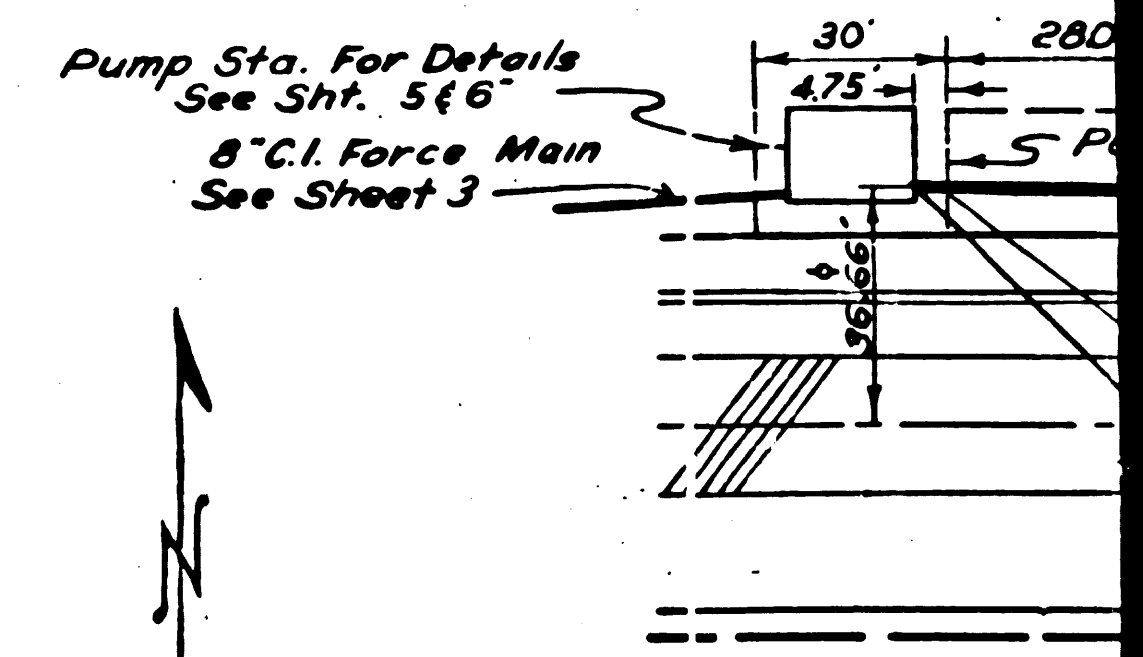
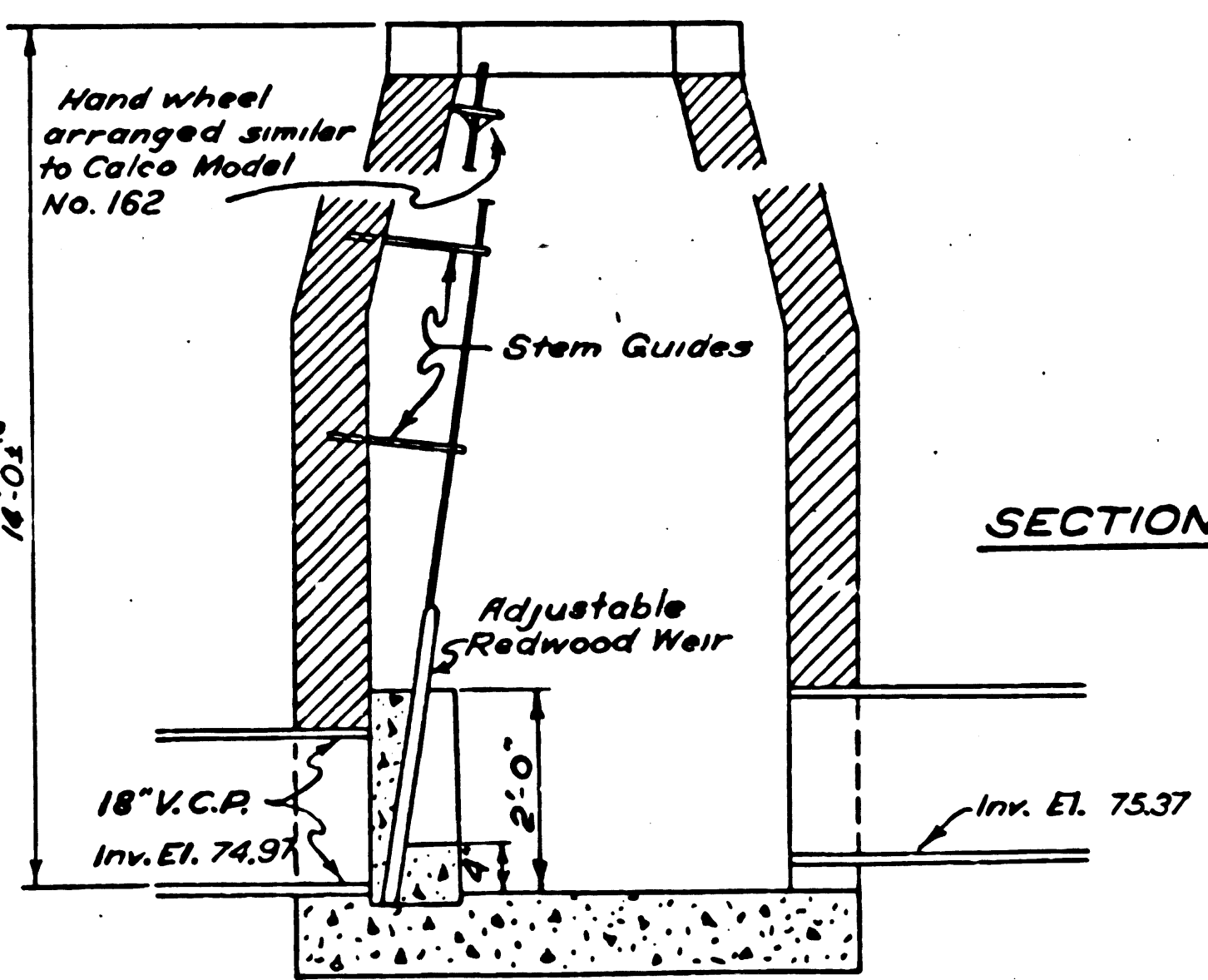
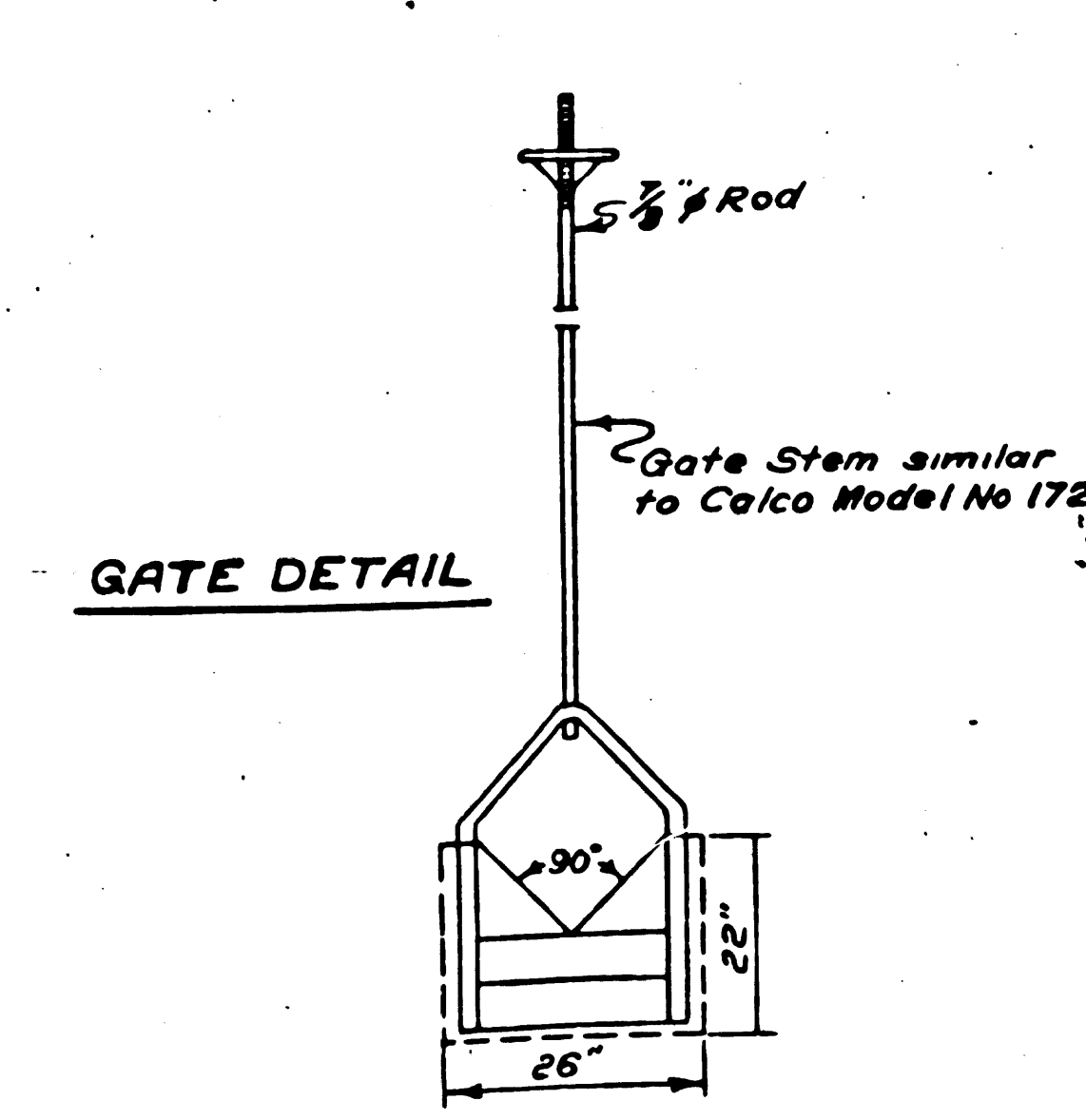
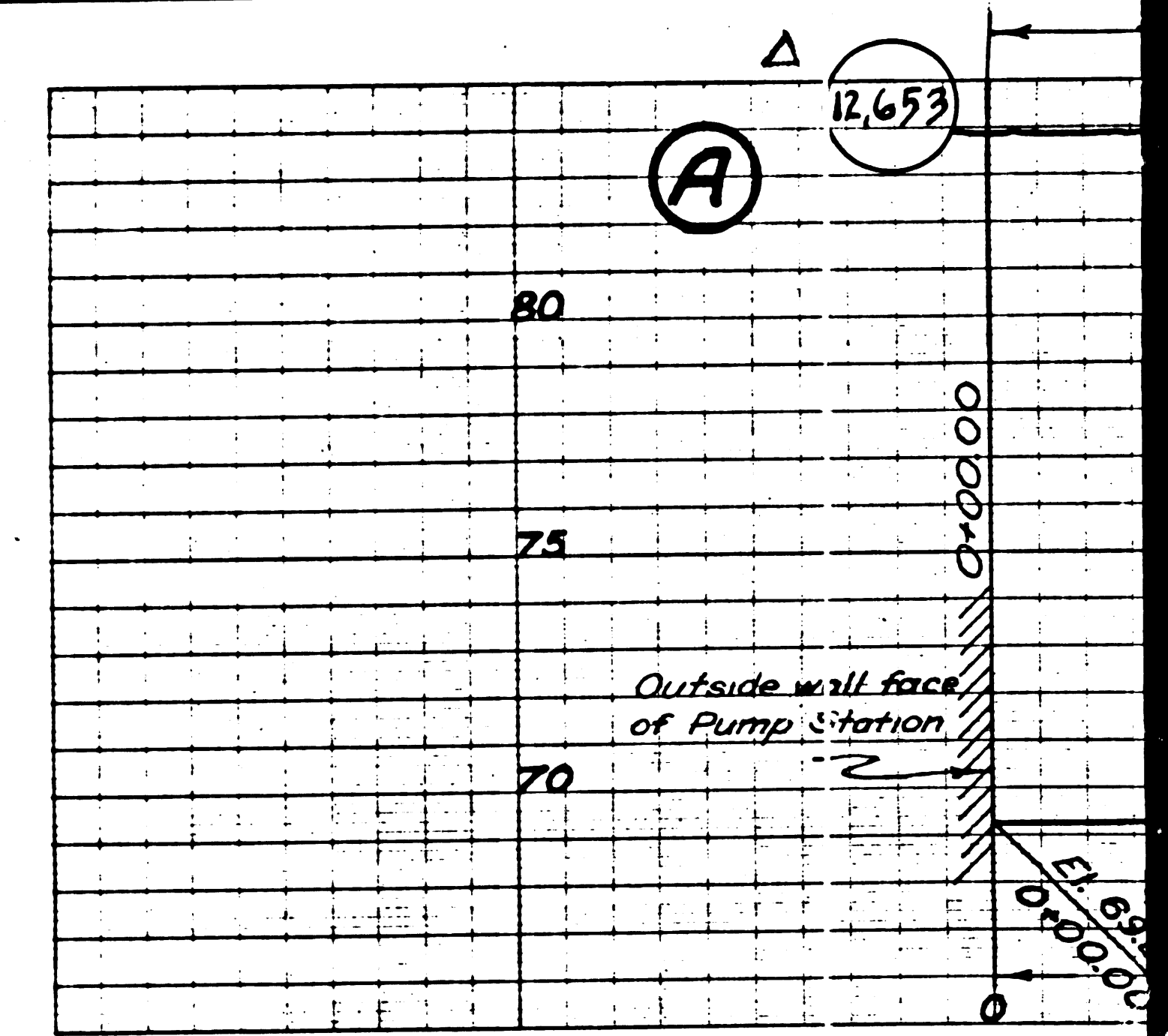
2

SERVED

SERVED



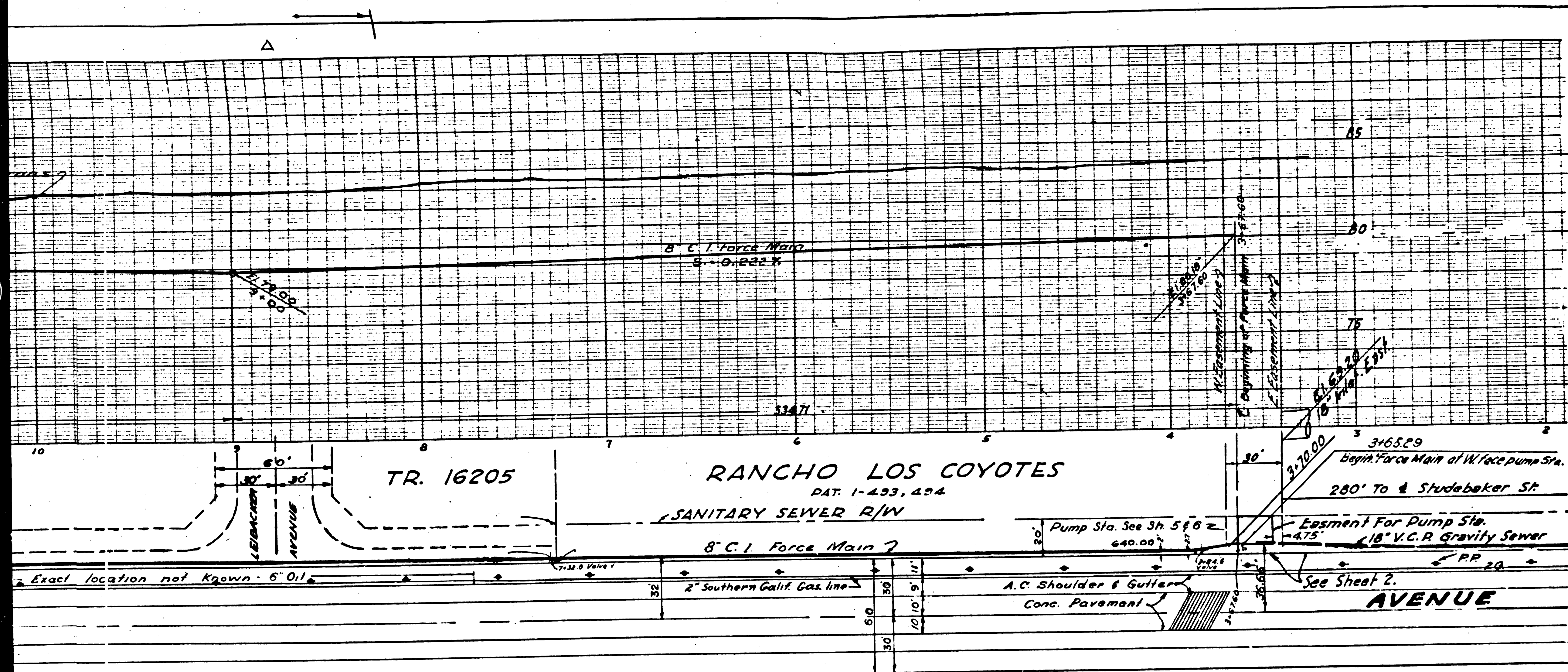
PLAN OF J.C. at STA. 64+59.43



PROPOSED

10445  
 60 1813-5  
 14





LOS COYOTES  
1-493, 454

Note: Distance from  $\pm$  Studebaker to P.C. east R-W is 2408.25.

2.674 24157 690' El. 84.589 Vol. 4, p. 270  
L.A. County Road Dept. Map & Intersection  
of Rosecrans & Studebaker R/W

PROFILE, GRADE AND ALIGNMENT OF  
**FORCE MAIN**  
TO BE CONSTRUCTED IN  
**ROSECRANS AVENUE**  
BETWEEN PUMP STA. TIES EAST OF  
STUDEBAKER ROAD AND 243.71  
WEST OF SAN GABRIEL RIVER

PRIVATE CONTRACT NO. 1213-C  
W-31 33 of J.A. 3454  
SHEET 3 OF 7 SHEETS  
SCALE: VERT. 1" = 4'  
HOR. 1" = 40'  
JAN 1950  
PREPARED IN THE OFFICES OF  
ENGINEERING SERVICE CORPORATION

BY: E. P. Levenson  
REG. C.E. NO. 1492

FOR LEGEND  
SEE PLAN NO. 54-54  
FOR CONSTRUCTION NOTES SEE SHEET 1

COUNTY OF LOS ANGELES, CALIFORNIA  
APPROVED: *E. P. Levenson*  
COUNTY ENGINEER  
APPROVED: *James T. Rothen*  
CHIEF ENGINEER OF COUNTY OF LOS ANGELES  
SANITATION DISTRICT NO. 18  
1/27/50  
CHECKED: James T. Rothen  
PUMP STATION RELOCATED  
REVISION CHECKED: *James T. Rothen* 5-21-50  
OFFICE OF COUNTY ENGINEER, REG. C.E. NO. 7103

REVISOR: 3-17-50  
Pump Station Relocated  
REVISION CHECKED: *James T. Rothen* 5-21-50  
OFFICE OF COUNTY ENGINEER, REG. C.E. NO. 7103

7/2/50

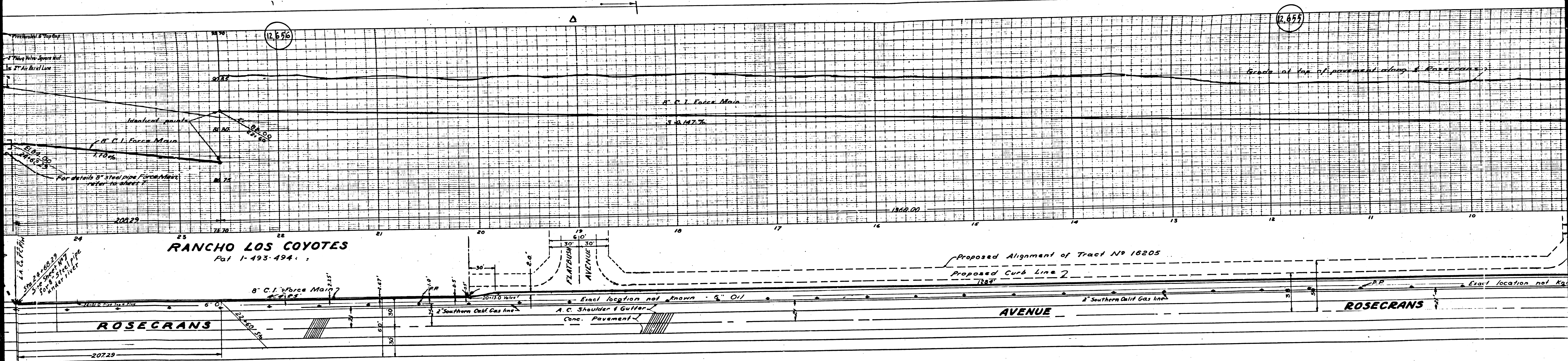
ENGINEERING SERVICE CORPORATION  
1127 W. WASHINGTON BLVD.  
LOS ANGELES 12, CALIF.

DESIGNED BY: Gates  
CHECKED BY: Levenson  
SUBMITTED BY: M. Miller

DATE STRUCTURE BUILT: 1950  
W.P. NO. 5950-3  
SP 55-1  
DATE: Jan. 1950  
NOTED: 614

This Profile 3 is also P.C. 1213-C  
J.A. 3454

ROSECRANS AVENUE

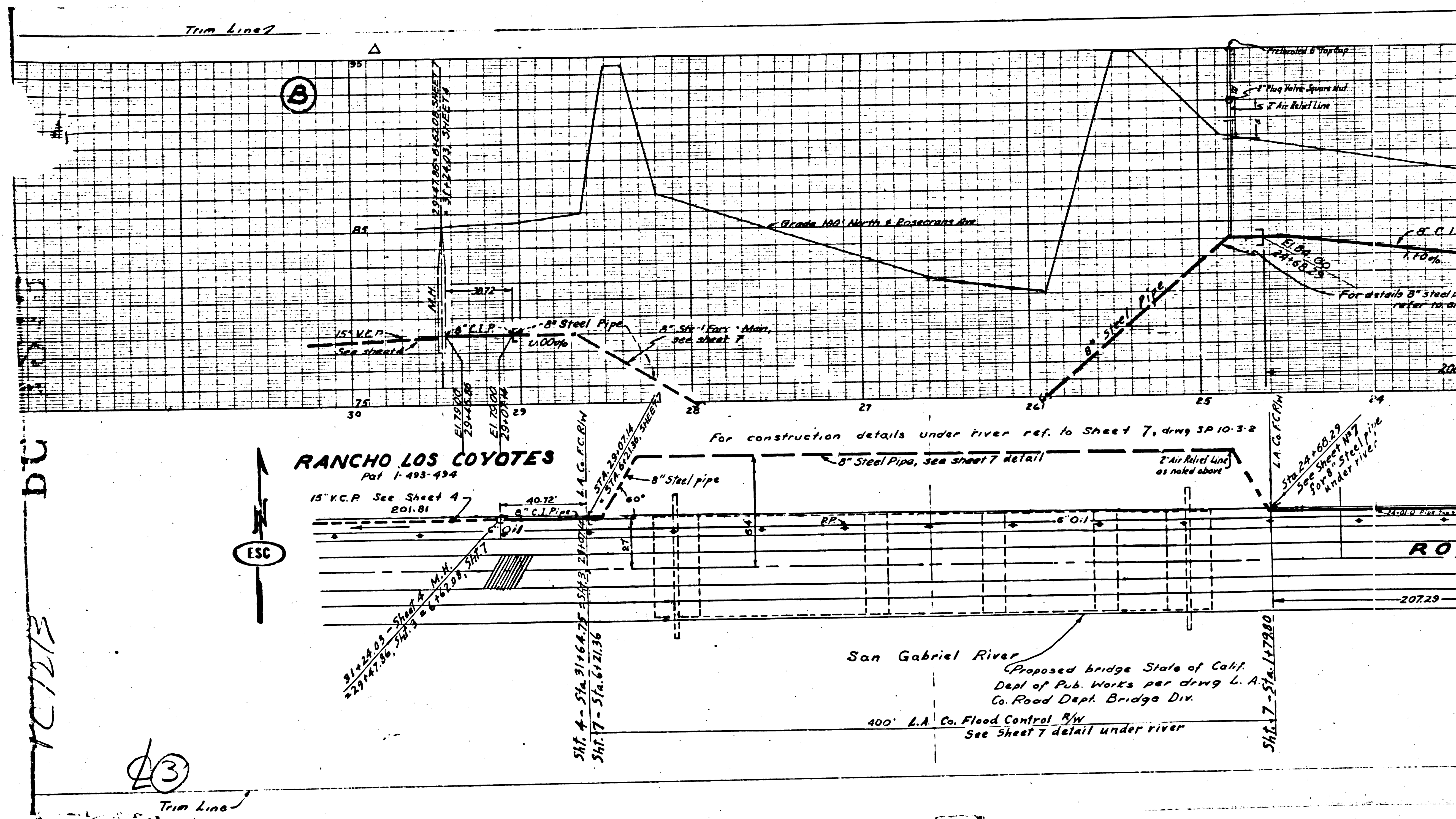


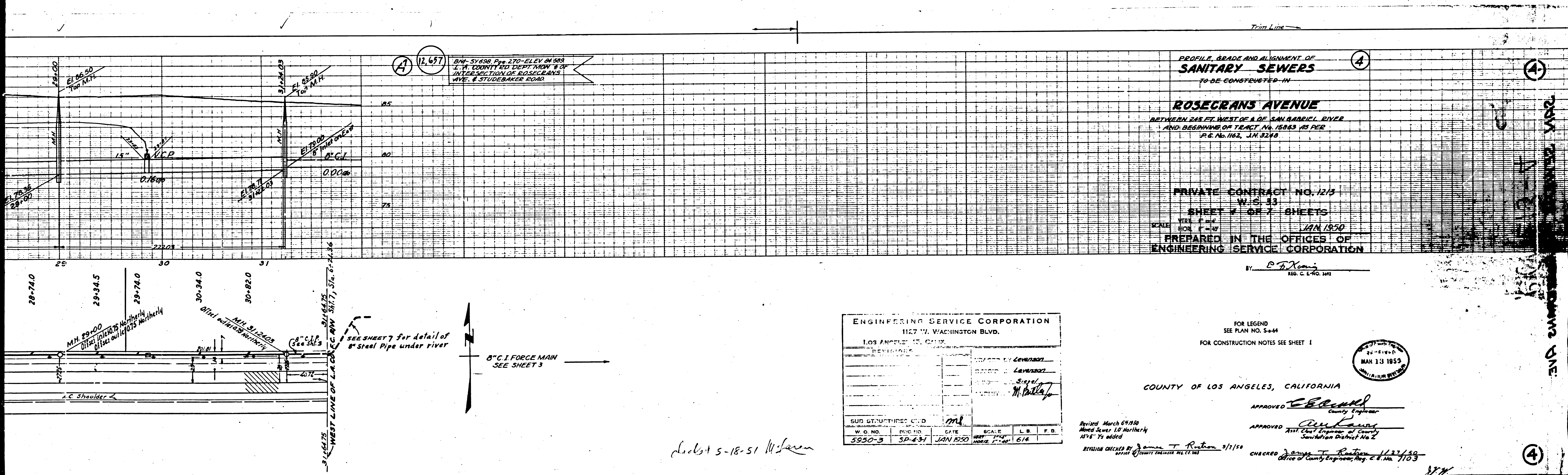
**RANCHO LOS COYOTES**  
Pat. 1-493-494

**RANCHO LOS COYOTE**  
Pat. 1-453-494

20

Sheet 17 of 25





BM 51638 Peg 270 - ELEV. 84.503  
 L.A. COUNTY ED. DEPT. MON. 8 OF  
 INTERSECTION OF ROSECRANS  
 WAYS & STUBBINS ROAD

PROFILE, GRADE AND ALIGNMENT OF  
**SANITARY SEWERS**  
 TO BE CONSTRUCTED IN  
**ROSECRANS AVENUE**  
 BETWEEN 245 FT. WEST OF A OF SAN RAFAEL RIVER  
 AND BEGINNING OF TRACT No. 15843 AS PER  
 P.C. No. 1162, J.M. 3248

PRIVATE CONTRACT NO. 1213  
 W.S. 13  
 SHEET 7 OF 7 SHEETS  
 YEAR 1950  
 MONTH JAN 1950  
 PREPARED IN THE OFFICES OF  
 ENGINEERING SERVICE CORPORATION

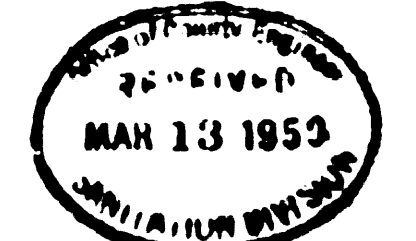
BY C. F. Kinn  
 REG. C. E. No. 101

ENGINEERING SERVICE CORPORATION  
 1127 W. WASHINGTON BLVD.  
 LOS ANGELES, CALIF.

W.O. NO.	DWG. NO.	DATE	SCALE	L.B.	F.D.
5950-3	SP-831	JAN 1950	1" = 10'	6/4	

APPROVED BY Leverson  
Leverson  
M. P. Kelly

FOR LEGEND  
 SEE PLAN NO. S-64  
 FOR CONSTRUCTION NOTES SEE SHEET 1



COUNTY OF LOS ANGELES, CALIFORNIA

APPROVED C. F. Kinn  
 County Engineer  
 APPROVED James T. Rafter  
 Asst. Chief Engineer of County  
 Sanitation District No. 2

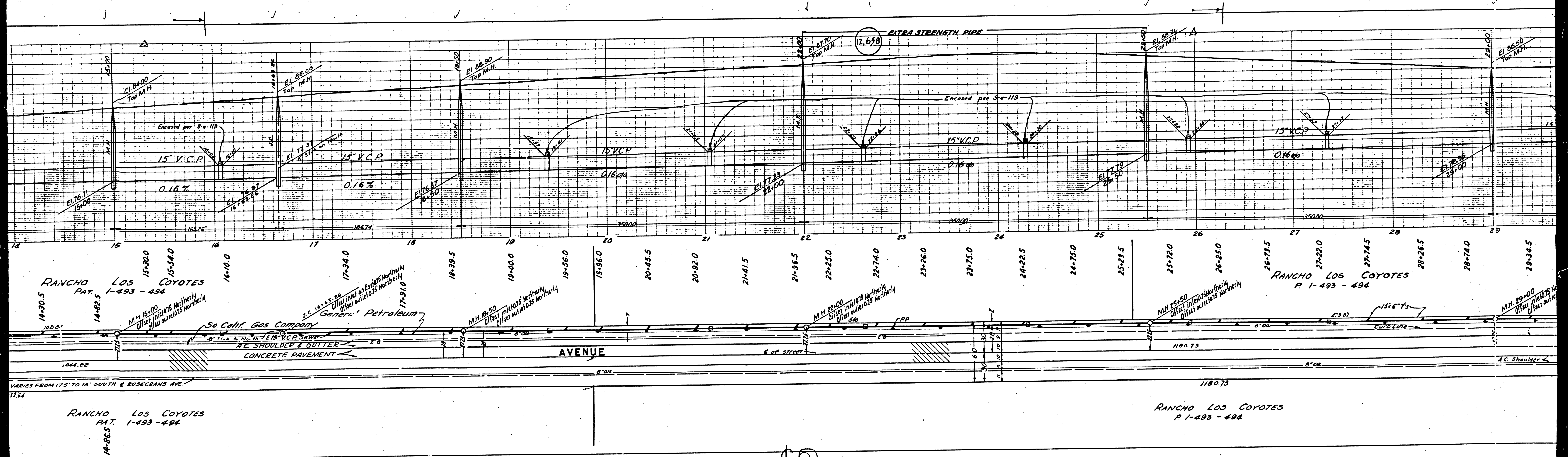
Revised March 6/1950  
 Moved Sewer 10' Northerly  
 18 1/2" Ys added  
 REVISION CHECKED BY James T. Rafter 3/1/50  
 OFFICE OF COUNTY ENGINEER, DISTRICT NO. 2

CHECKED James T. Rafter 1/22/50  
 Office of County Engineer, Reg. C. E. No. 1103

Sheet 5-18-51 W. Larson

EO

DRAWING ONE



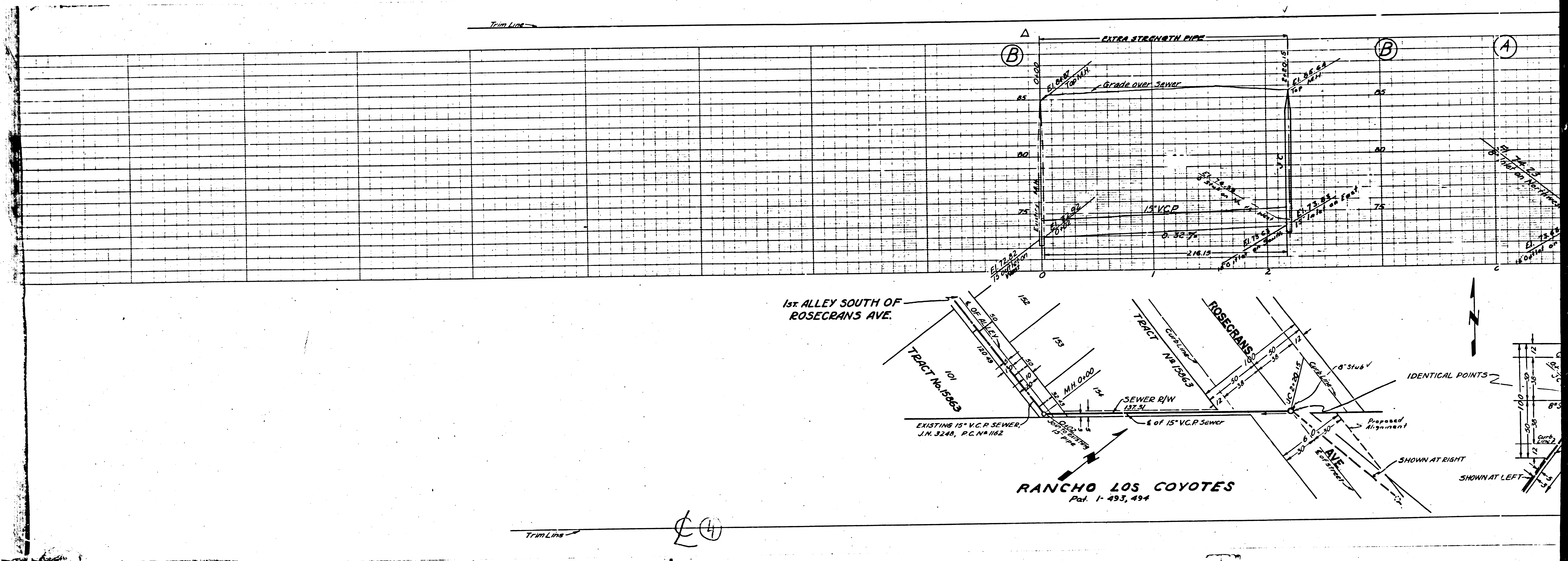
EQ

VARIABLES FROM 17'S TO 16' SOUTH & ROSECRANS AVE.  
37.64

RANCHO LOS COYOTES  
PAT. 1-493-494  
14-86.5

RANCHO LOS COYOTES  
P. 1-493-494





1st ALLEY SOUTH OF ROSECRANS AVE.

TRACT No. 1003

EXISTING 15" V.C.P. SEWER, J.N. 3248, P.C. No. 1162

M.H. 0+00

SEWER R/W 137.5'

15" V.C.P. Sewer

**RANCHO LOS COYOTES**  
Pat. 1-493,494

IDENTICAL POINTS

SHOWN AT RIGHT

SHOWN AT LEFT

④