

24' W 1/4 L 4 Co. Sec. 19 T 8 S R 9 E
 81/2' x 110' 0" on Claymore St
 175' West of Telegraph Ave.

USE STANDARD MANHOLE FRAMES AND COVERS 50 IN.
 USE STANDARD STRENGTH PIPE EXCEPT AS NOTED.
 USE CEMENT MORTAR FOR ALL VITRIFIED CLAY PIPE JOINTS.
 RESURFACE ALL TRENCH WITHIN PAVED AREA TO MEET LOS ANGELES
 COUNTY ROAD DEPT. REQUIREMENTS.
 CONSTRUCT HOUSE CONNECTIONS WITH INVERT AT PROPERTY LINE
 5 FT. BELOW CURB GRADE EXCEPT AS NOTED.
 ENCASE FOUR FEET OF SEWER AT POINTS OF INTERFERENCE WITH POLES ETC.
 ALL STRUCTURES SHALL BE BRICK SEWER STRUCTURES 3' x 18" EXCEPT AS NOTED.
 PROVIDE MANHOLE ON PROPERTY LINES OR PROPERLY LOCATED AT RIGHT
 ANGLES TO THE SEWER LINE AT THE CENTER LINE OF EACH MANHOLE.

NOTE: No representation of the County Engineer will be made of the accuracy of the work shown on this plan or profile unless the County Engineer is furnished with a true and correct copy of the original field notes and a true and correct copy of the original survey plat or map on which the work is based. The County Engineer will not be held responsible for any errors or omissions in this plan or profile unless the County Engineer is furnished with a true and correct copy of the original field notes and a true and correct copy of the original survey plat or map on which the work is based.

(10,481) PROFILE, ALIGNMENT AND GRADE OF
SANITARY SEWERS
 TO BE CONSTRUCTED, IN
ANAHEIM TELEGRAPH ROAD

PRIVATE CONTRACT NO. 1218
 W.S. 33436
 SHEET 1 OF 2 SHEETS
 PREPARED IN THE OFFICE OF
KARL F TUTTLE

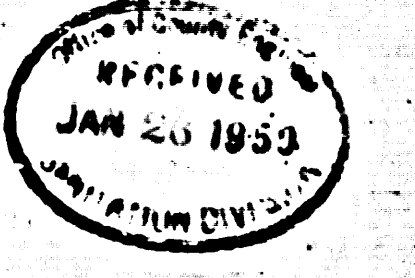
NOTE: GRADES TO WHICH THIS IMPROVEMENT IS TO BE CONSTRUCTED ARE SHOWN ON PLANS AND PROFILES. GRADE POINTS FOR EACH CLASS CENTER LINE OF STREET OR CENTER LINE OF ALLEY ARE KNOWN BY CIRCLES ON PROFILES. AT ALL POINTS BETWEEN DESIGNATED POINTS THE GRADE SHALL BE ESTABLISHED SO AS TO CONFORM TO A GRADE LINE OBTAINED BETWEEN SAID DESIGNATED POINTS. ELEVATIONS ARE IN FEET ABOVE U.S. DATUM OR MEAN SEA LEVEL. THE DRAWING AND THE DATA HEREON ARE HEREBY MADE A PART OF THE SPECIFICATIONS. WORK SHALL BE CONSTRUCTED ACCORDING TO SPECIFICATIONS ON FILE IN THE OFFICE OF THE COUNTY ENGINEER AND SHALL BE PROSECUTED ONLY IN THE PRESENCE OF THE COUNTY ENGINEER. BEFORE WORK CAN BE STARTED THE CONTRACTOR MUST OBTAIN A PERMIT TO EXCAVATE IN COUNTY STREETS FROM THE COUNTY ROAD DEPT. THIS PERMIT IS TO BE OBTAINED FROM THE COUNTY ENGINEER, LOS ANGELES COUNTY, CONCERNING BIDS SUFFICIENT TO COVER THE COST OF CONSTRUCTION INSPECTION AND RECORD PLANS. APPROVAL OF THIS PLAN BY THE COUNTY OF LOS ANGELES DOES NOT CONSTITUTE A REPRESENTATION AS TO THE ACCURACY OF THE LOCATION OF, OR THE EXISTENCE OR NON-EXISTENCE OF ANY UNDERGROUND UTILITY PIPE OR STRUCTURE WITHIN THE LIMITS OF THIS PROJECT. THIS NOTE APPLIES TO ALL SHEETS.

COUNTY OF LOS ANGELES, CALIFORNIA

APPROVED: *[Signature]*
 COUNTY ENGINEER

APPROVED: *[Signature]*
 SANITATION DIST. NO. 2

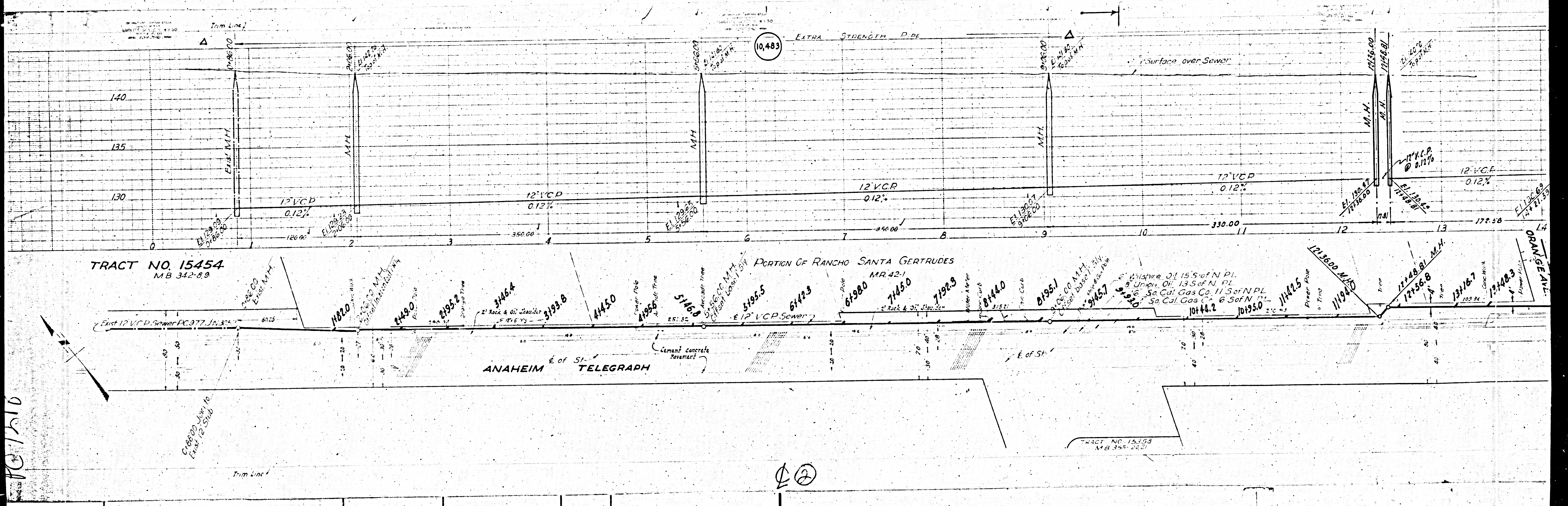
CHECKED BY: *[Signature]*
 OFFICE OF COUNTY ENGINEER, LOS ANGELES



INDEX MAP
 Scale 1" = 400'
 PC 1218 JAN 33/34

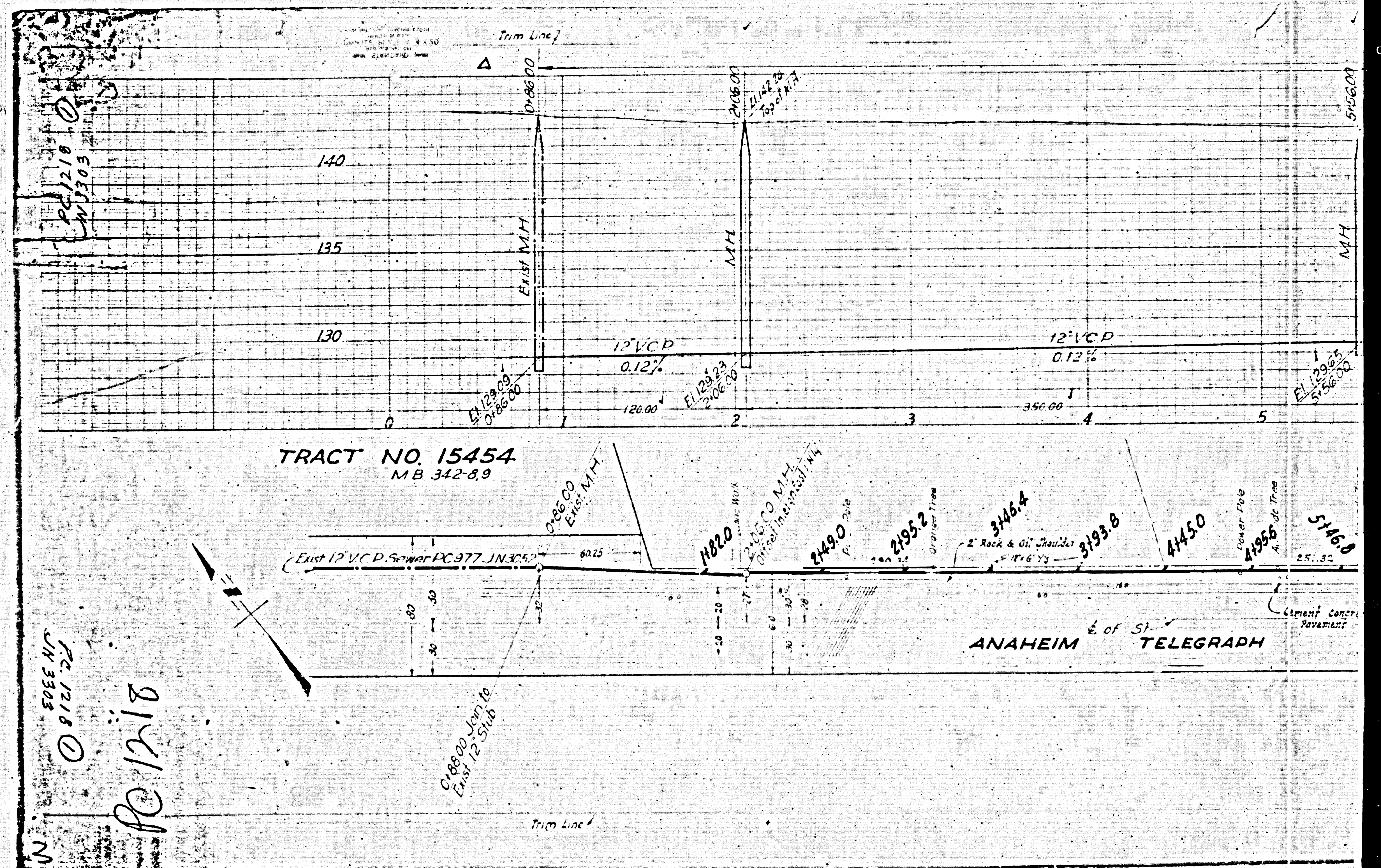
check between 6-9-30

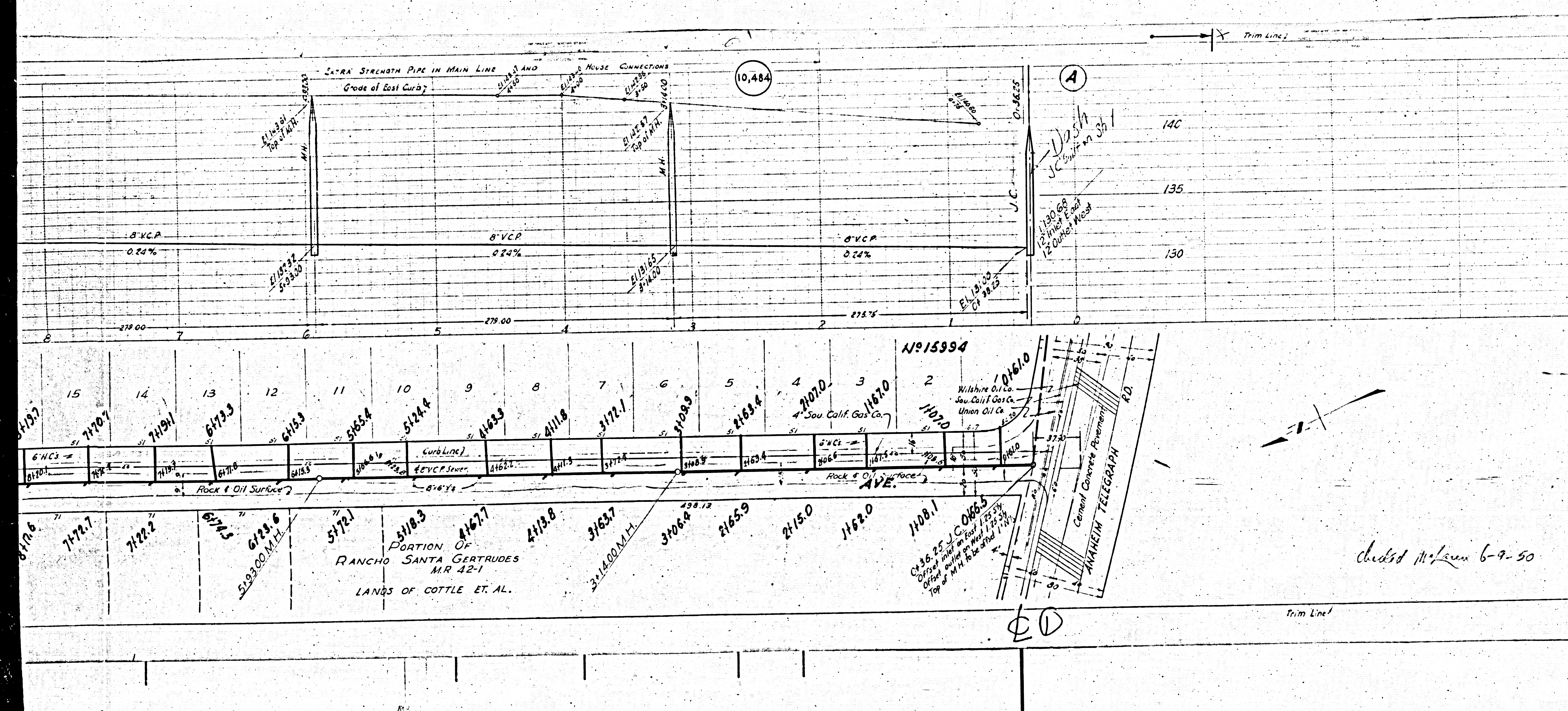
BC 1518



10/21/10

②





P.L. FILE, ALIGNMENT AND GRADE OF
SANITARY SEWERS
 TO BE CONSTRUCTED IN
TRACT No 15994

PRIVATE CONTRACT No 1210
 W.S. 33 & 36
 SCALE 1/2" = 1'-0"
 SHEET 2 OF 2 SHEETS
 PREPARED IN THE OFFICE OF
KARL F TUTTLE
 CIVIL ENGINEER
 No. 2000

FOR LEGEND
 SEE PLAN NO 3000

FOR CONSTRUCTION NOTES SEE SHEET 1

COUNTY OF LOS ANGELES-CALIFORNIA

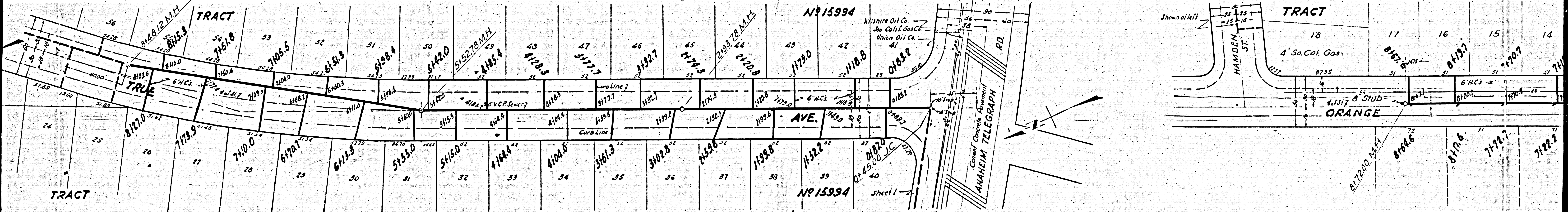
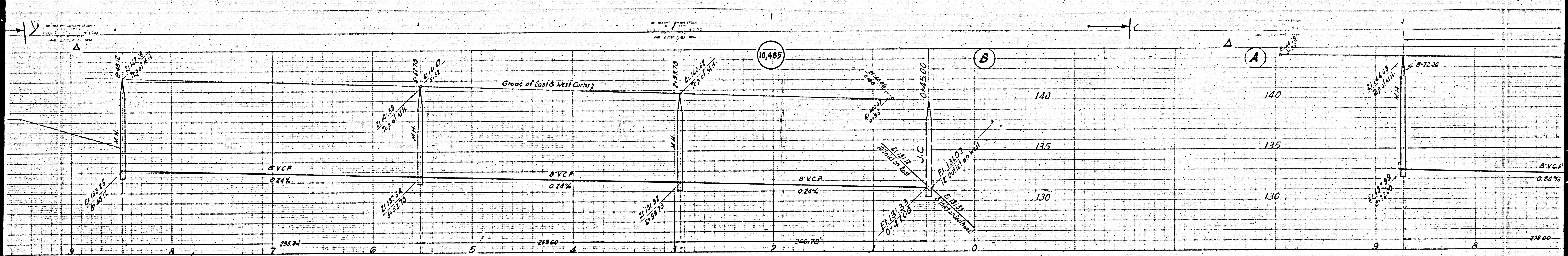
APPROVED *[Signature]*
 COUNTY ENGINEER

APPROVED *[Signature]*
 CIVIL ENGINEER OF COUNTY
 REGISTRATION No. 1112

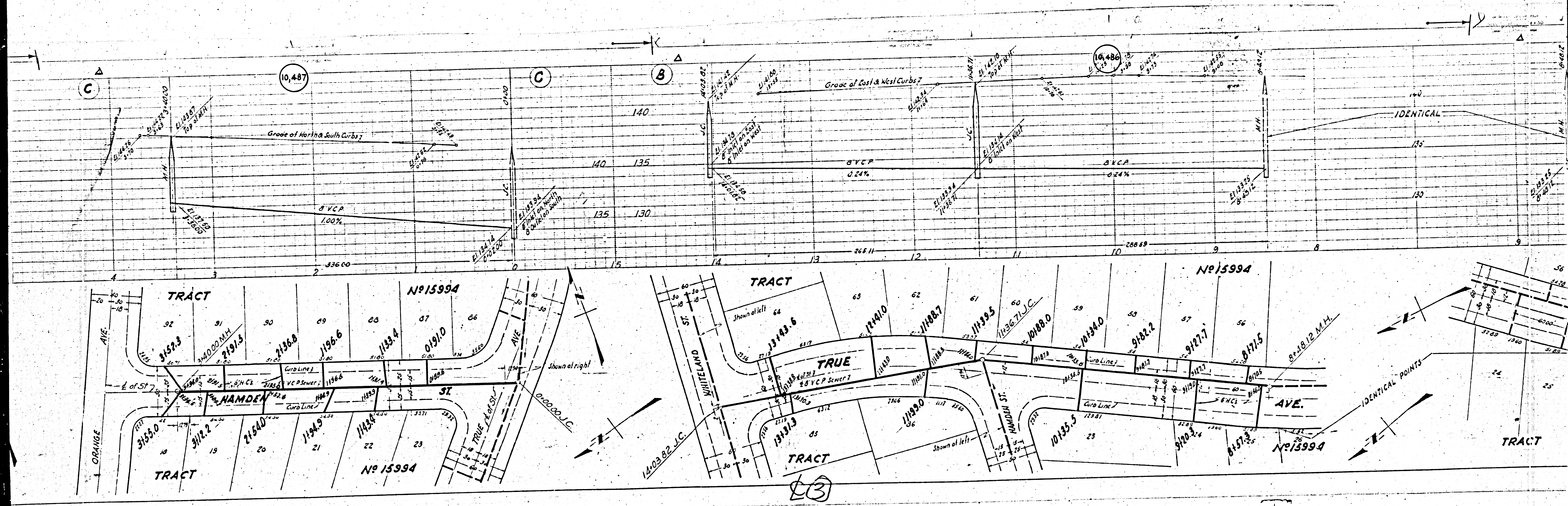
Checked M. L. ... 6-9-50

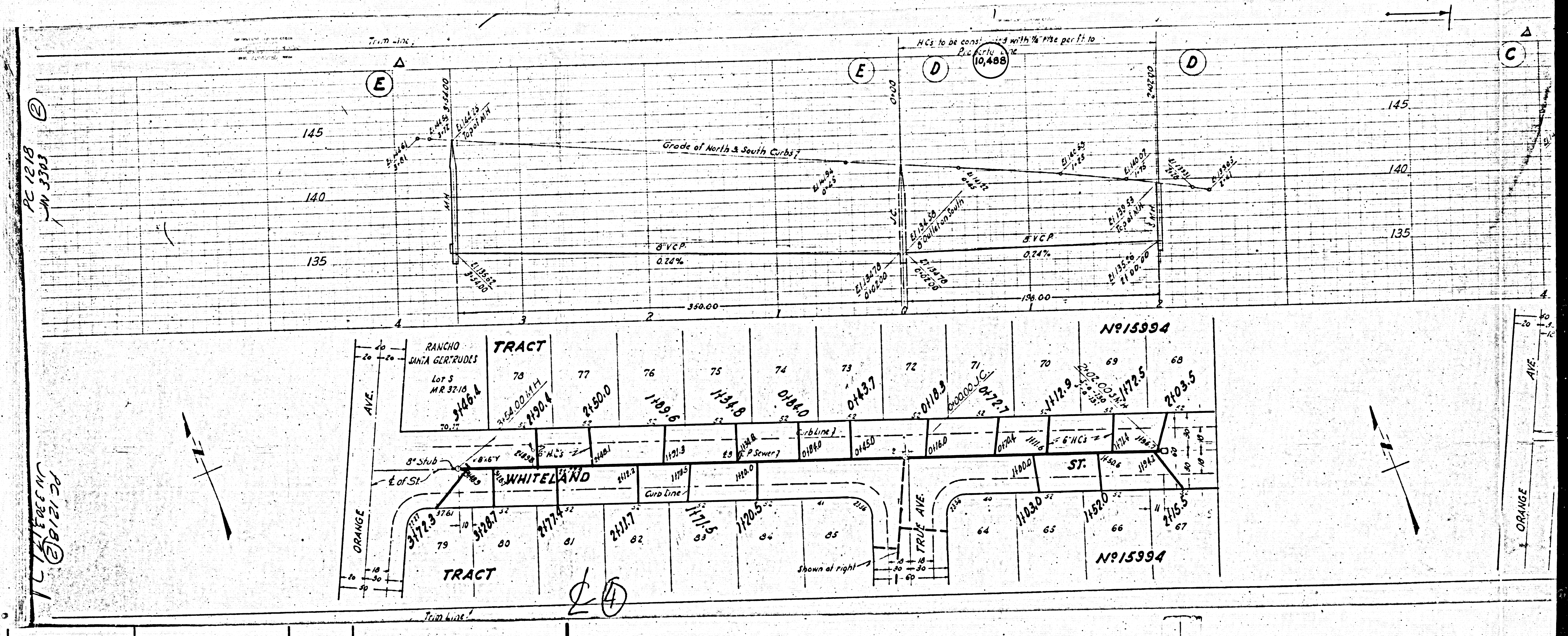
CHECKED BY *[Signature]* I. K. ... 1.10.1950
 OFFICE OF COUNTY ENGINEER REG. No. 1112

101818



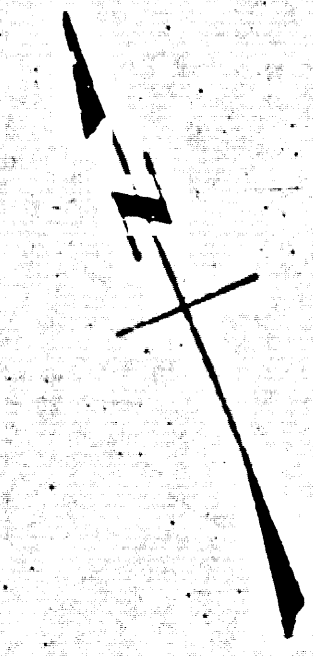
②





PC 1218
 W 3203

PC 1218
 W 3203
 71



24