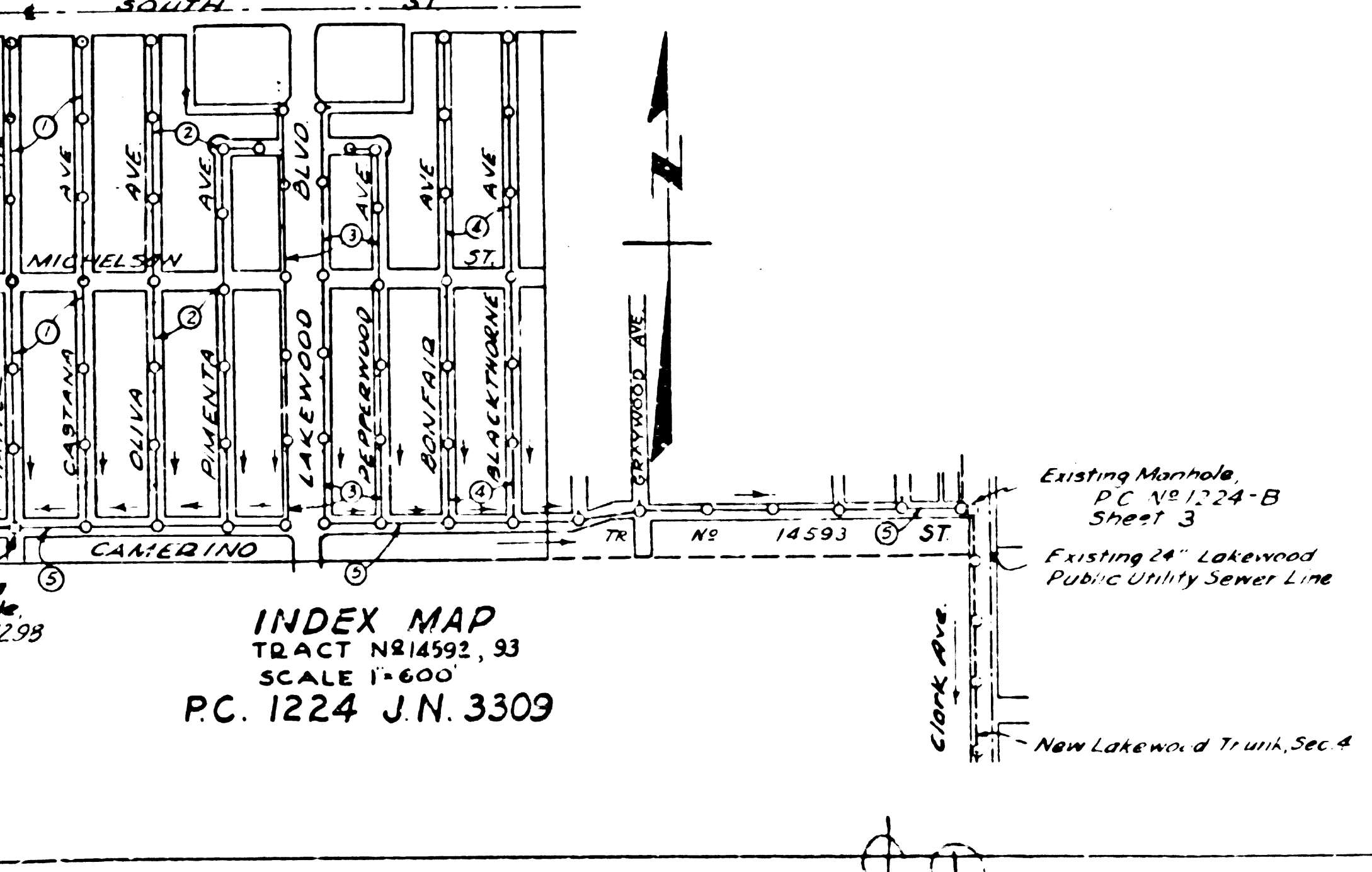


BY 104.77 Elev. 31.061. (Small Depth)  
 Transfer Pipe to South Street, 104.77 Elev. 31.061. (Small Depth)  
 L.P.E. North Curve, Section of 1.1 Miles & D.

NOTE:  
 THE EXISTENCE AND LOCATION OF ANY UNDERGROUND UTILITIES OR STRUCTURES SHOWN ON THESE PLANS ARE FROM THE BEST INFORMATION AVAILABLE AND THE ENGINEERING SERVICE CORPORATION ASSUMES NO RESPONSIBILITY BEYOND THE INFORMATION FURNISHED ON THESE APPROVED PLANS.



1. USE STANDARD MANHOLE FRAMES AND COVERS S-117.
  2. USE STANDARD STRENGTH PIPE EXCEPT AS NOTED.
  3. USE GEMENT MORTAR FOR ALL WITHEED CLAY JOINTS.
  4. RESURFACE ALL TRENCH WITHIN PAVED AREAS TO MEET L.A. COUNTY ROAD DEPT. OR CALIFORNIA STATE HIGHWAY REQUIREMENTS IN ACCORDANCE WITH THE PERMIT.
  5. ENCASE FOUR FEET OF SEWER AT POINTS OF INTERFERENCE WITH POLES, SIGNS.
  6. MAKE CONNECTIONS TO BE CONSTRUCTED WITHIN 100 FEET OF PROPERTY LINE SEPT. ONLY OVER SEWER (EXCEPT AS NOTED).
  7. ALL STRUCTURES SHALL BE CONSTRUCTED WITHIN 5'-10" FROM PROPERTY LINES OR PROPERTY LINES PROVIDED BY PLUMBING INSPECTOR OF THE JUNCTION OF THE CENTER LINE OF EACH MANHOLE.
- NOTE:  
 NO REPRESENTATIVE OF THE COUNTY ENGINEER WILL SURVEY OR LAY OUT ANY PORTION OF THE WORK.  
 THE OWNER OR HIS AUTHORIZED REPRESENTATIVE SHALL PERMIT THE COUNTY ENGINEER WITH GRADE SHEETS AND STATIONS FOR ALL THESE CONNECTIONS DATE 7:30 A.M. AND SHALL PROVIDE STAKES FOR THEM AT THEIR PROPER LOCATIONS WITH STATIONING PLAINLY MARKED ANY CHANGE OF LOCATION OR LEVEL SHALL BE IN WRITING BY THE OWNER OR HIS REPRESENTATIVE.  
 NO REVISIONS SHALL BE MADE IN THESE PLANS WITHOUT APPROVAL OF THE COUNTY ENGINEER.
- NOTE:  
 ALL PERMITS MUST BE OBTAINED FROM THE STATE OF CALIFORNIA, DIVISION OF HIGHWAYS, 120 S. SPRING ST., FOR THE WORK ON LAKEWOOD BLVD., AFTER MAKING THE DEPOSIT WITH THE COUNTY ENGINEER.

**ENGINEERING SERVICE CORPORATION**  
 1127 W. WASHINGTON BLVD.  
 LOS ANGELES 17, CALIF.

REVISIONS:  
 CHANGE 0.004 TO 0.009  
 BETWEEN 0.000 AND 0.009  
 CHANGE 0.000 TO 0.005  
 BETWEEN 0.000 AND 0.005

TRACED BY: H. Schiffer  
 DESIGNED BY: J. N. 3309  
 CHECKED BY: J. N. 3309  
 APPROVED BY: J. N. 3309

NO. 14592  
 SHEET 1 OF 5

DATE: FEB. 1950

PROFILE, GRADE AND ALIGNMENT OF  
**SANITARY SEWERS**  
 TO BE CONSTRUCTED IN  
**HAYTER AVENUE**  
 BETWEEN CAMERINO AND SOUTH STREET  
**CASTANA AVENUE**  
 BETWEEN CAMERINO AND SOUTH STREET  
 IN TRACT NO. 14592

PRIVATE CONTRACT NO. 1224  
 W. S. 33  
 SHEET 1 OF 5 SHEETS

SCALE: VERT. 1" = 4'  
 HOR. 1" = 40'

FEB. 1950

PREPARED IN THE OFFICES OF  
 ENGINEERING SERVICE CORPORATION

W. C. F. Koenig  
 No. 2 640, 101

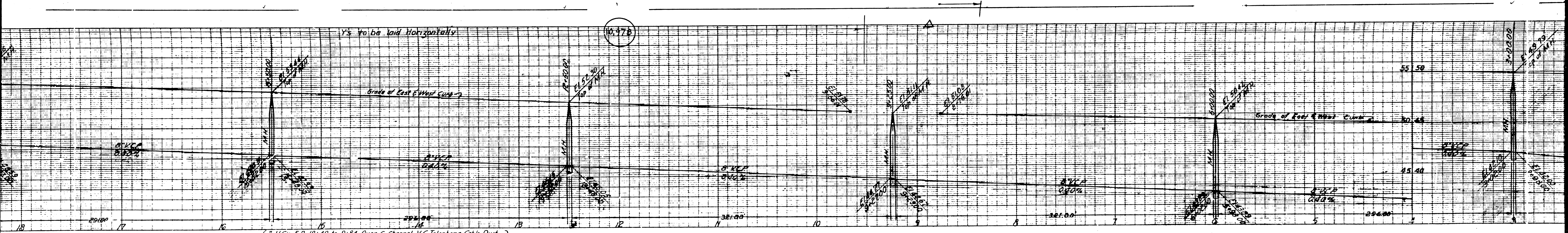
NOTE:  
 CHANGE IN GRADE OR ALIGNMENT OF SEWER SHALL BE SHOWN ON PLANS AND PROFILES.  
 ALL CHANGES SHALL BE MADE IN ACCORDANCE WITH THE PERMIT AND SHALL BE ESTABLISHED BY THE COUNTY ENGINEER.  
 THIS DRAWING AND ALL INFORMATION CONTAINED HEREIN IS THE PROPERTY OF THE COUNTY ENGINEER AND SHALL BE KEPT IN HIS OFFICE.  
 NO PART OF THIS DRAWING OR INFORMATION CONTAINED HEREIN SHALL BE REPRODUCED OR TRANSMITTED IN ANY FORM OR BY ANY MEANS, ELECTRONIC OR MECHANICAL, INCLUDING PHOTOCOPYING, RECORDING, OR BY ANY INFORMATION STORAGE AND RETRIEVAL SYSTEM, WITHOUT THE WRITTEN PERMISSION OF THE COUNTY ENGINEER.  
 APPROVAL OF THIS PLAN BY THE COUNTY ENGINEER IS LIMITED TO THE REPRESENTATION AS TO THE ACCURACY OF THE DATA AND THE CONFORMANCE WITH THE PERMIT AND DOES NOT CONSTITUTE A GUARANTEE OF THE ACCURACY OF THE DATA OR THE CONFORMANCE WITH THE PERMIT.  
 THIS NOTE APPLIES TO ALL SHEETS.

RECEIVED  
 APR 7 1950  
 COUNTY ENGINEER

REVISION SHEET NO. 1

SEE W. 3309  
 N.E. & CASTANA AVE  
 1



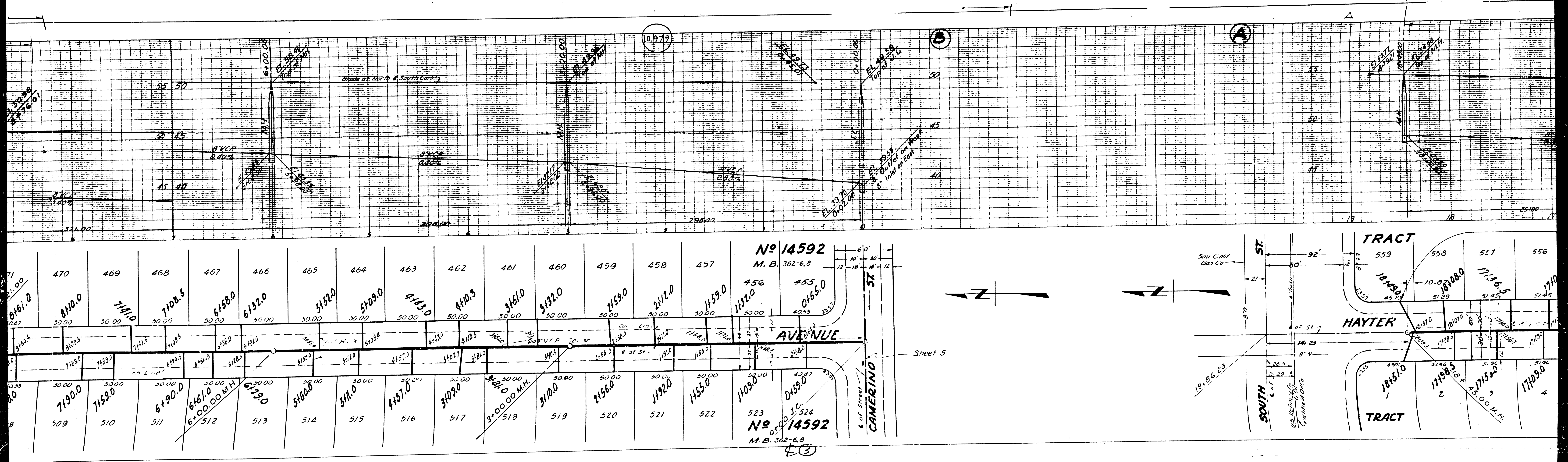


H.C.'s E.R. 18x49 to 9x84 Over 6 Channel V.C. Telephone Cable Duct Cradled with Class B Concrete Reinforced with 3/8" Iron Bars 30" long equally spaced. Three bars per H.C. for reinforcement. added by PC 1497 - JN 3591

558	557	556	555	554	553	552	551	550	549	548	547	546	545	544	543	542	541	540	539	538	537	536	535	534	533	532	531	530	529	
17000.0	17136.5	17104.0	16149.0	15782.0	15148.0	15000.0	1447.5	13778.0	13144.0	12793.0	12121.5	11910.0	11410.0	10990.0	10136.5	9184.0	8151.0	8154.0	7191.5	7159.0	7106.0	6143.5	6112.5	5181.0	5109.0	4182.0	4111.6	3161.0	3107.5	2147.0
17198.5	17156.0	17109.0	16152.5	15790.0	15156.0	14955.0	14133.0	13790.0	13140.5	12750.00 M.H.	12180.0	12140.5	11930.0	11437.0	10978.0	10140.0	9181.0	8159.0	8100.0	7182.5	7110.0	6151.0	6111.5	5161.0	5133.0	4159.0	4114.0	3152.0	3107.0	2163.0
1	2	3	4	5	6	7	8	9	10	11	12	13	14	15	16	17	18	19	20	21	22	23	24	25	26	27	28	29	30	31

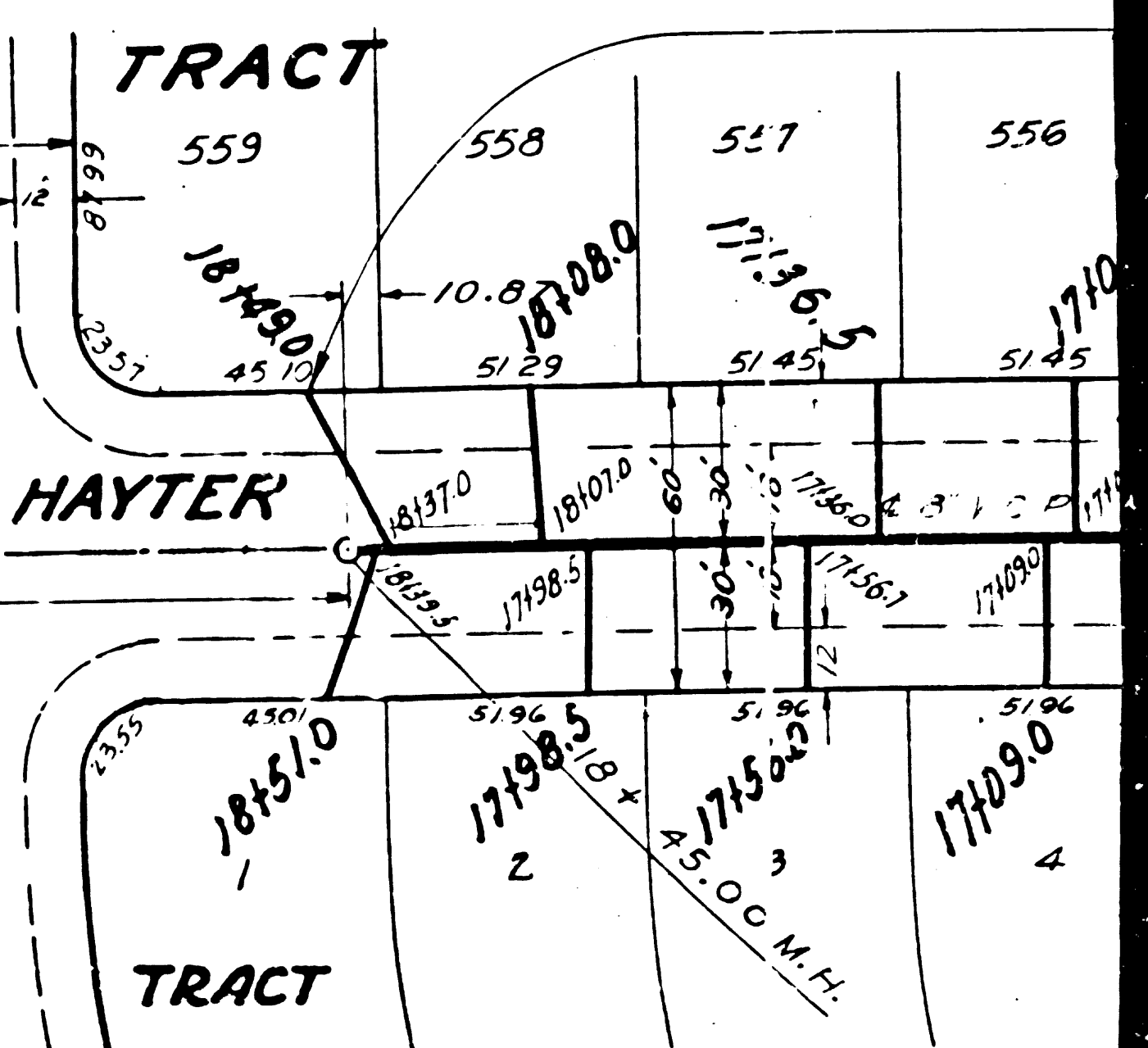
EO





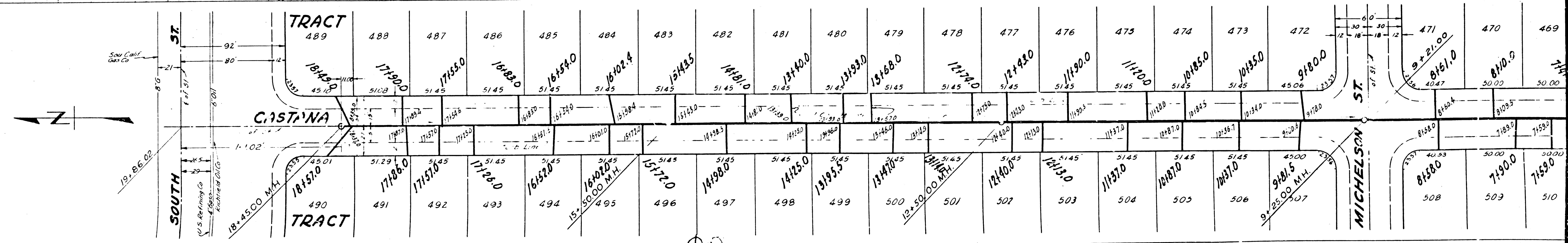
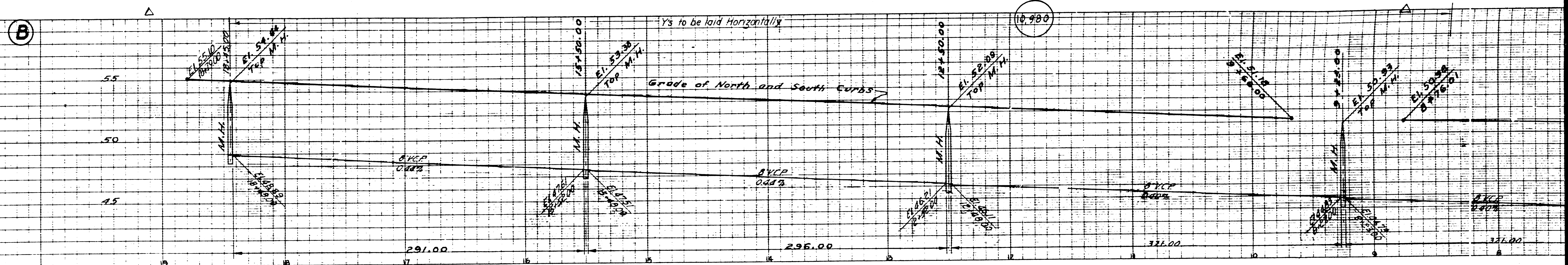
No 14592  
M.B. 362-6.8

No 14592  
M.B. 362-6.0

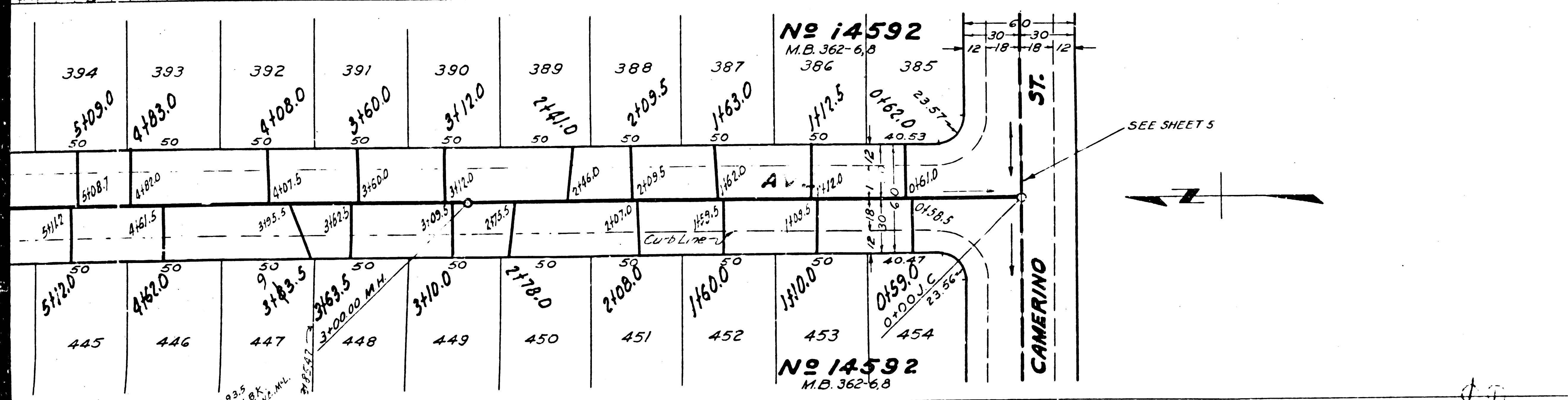
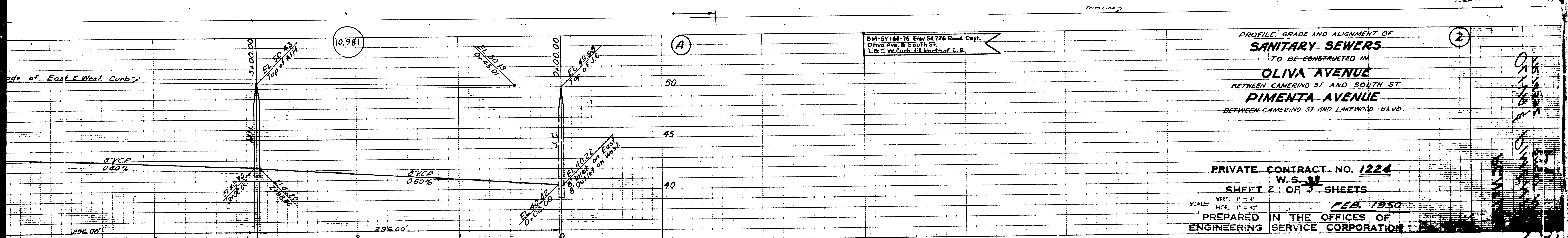


Sheet 5









PROFILE, GRADE AND ALIGNMENT OF  
**SANITARY SEWERS**  
 TO BE CONSTRUCTED IN  
**OLIVA AVENUE**  
 BETWEEN CAMERINO ST AND SOUTH ST  
**PIMENTA AVENUE**  
 BETWEEN CAMERINO ST AND LAKEWOOD BLVD.

PRIVATE CONTRACT NO. **1224**  
 W.S. **38**  
 SHEET **2** OF **3** SHEETS  
 SCALE: VERT. 1" = 4'  
 HOR. 1" = 40'  
**FEB. 1950**  
 PREPARED IN THE OFFICES OF  
**ENGINEERING SERVICE CORPORATION**

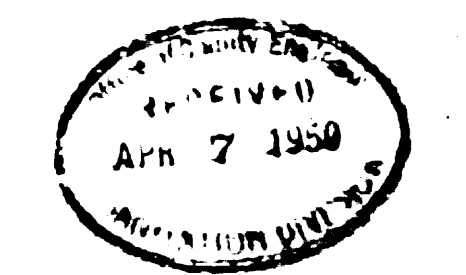
NOTE:  
 THE EXISTENCE AND LOCATION OF ANY UNDERGROUND  
 UTILITY PIPES OR STRUCTURES SHOWN ON THESE PLANS ARE FROM  
 THE BEST INFORMATION AVAILABLE AND THE ENGINEERING SERVICE  
 CORPORATION ASSUMES NO RESPONSIBILITY BEYOND THE IN-  
 FORMATION FURNISHED ON THESE APPROVED PLANS.

**ENGINEERING SERVICE CORPORATION**  
 1127 W. WASHINGTON BLVD.  
 LOS ANGELES, CALIF.

SUB STRUCTURES CK'D W. O. NO. 5977-7 DWG. NO. 1-26-3-2 DATE FEB. 1950 YEAR 1950 SCALE 1" = 40' L. B. F. B.	CHECKED BY DESIGNED BY CK'D BY ESTABLISHED DATE
--	---

FOR LEGEND  
 SEE PLAN NO. 5-6-64  
 FOR CONSTRUCTION NOTES SEE SHEET 1

COUNTY OF LOS ANGELES, CALIFORNIA  
 APPROVED: [Signature]  
 COUNTY ENGINEER  
 APPROVED: [Signature]  
 CHIEF ENGINEER OF COUNTY  
 SANITATION DISTRICT NO. 8  
 CHECKED: [Signature]  
 OFFICE OF COUNTY ENGINEER, Bldg. C. L. NO. 1262  
 REVISION CHECKED: [Signature] 3-24-50



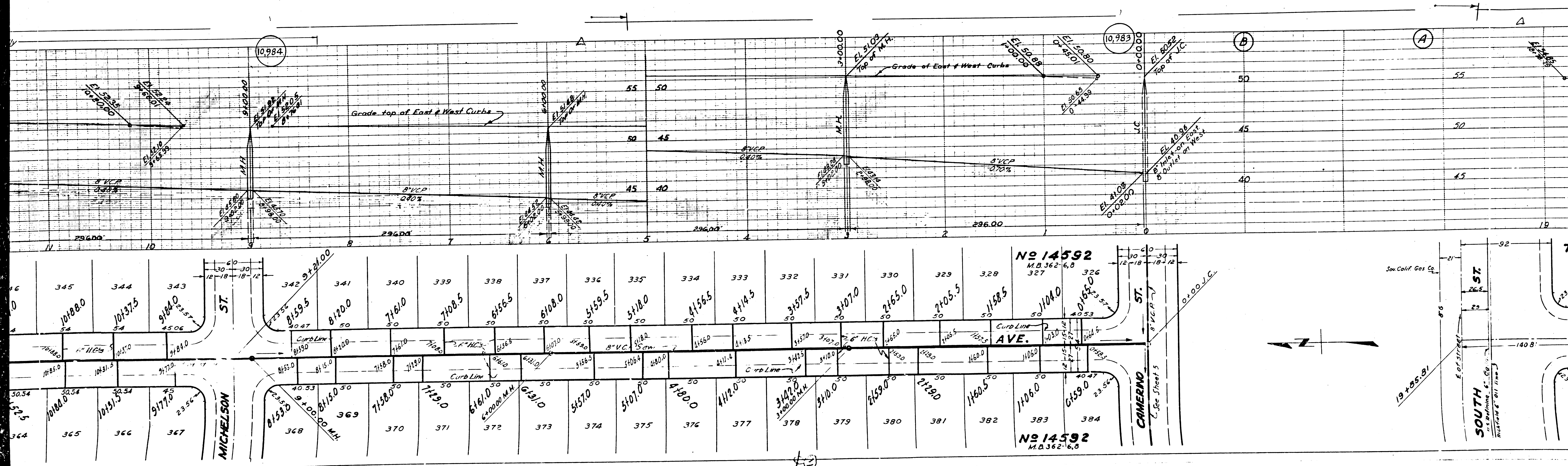
1127 W. WASHINGTON BLVD.  
 LOS ANGELES, CALIF.









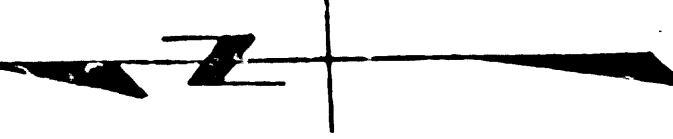


10,984

10,983

No 14592  
M.D. 362-6.0

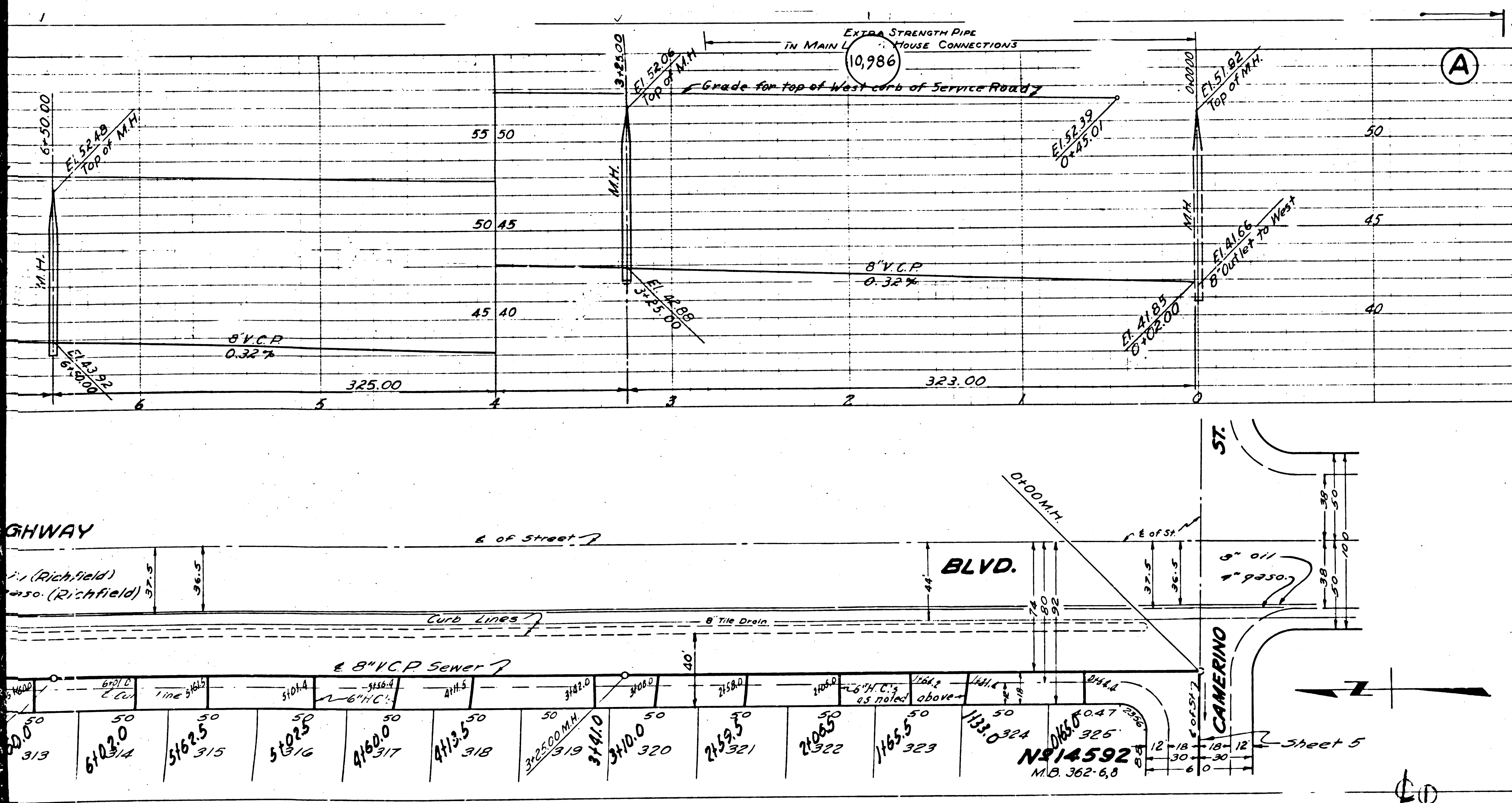
No 14592  
M.D. 362-6.0











B.M. 5716396 - Elev. 33.83 P.D.  
 South St. & Lakewood Blvd  
 Lead & Tack Straddler No. 2 Intersection

PROFILE GRADE AND ALIGNMENT OF  
**SANITARY SEWERS**  
 TO BE CONSTRUCTED IN  
**LAKEWOOD BLVD, EAST SIDE**  
 BETWEEN CAMERINO ST. & FIRST ALLEY  
 NORTH OF PEPPERWOOD AVE.  
**LAKEWOOD BLVD, WEST SIDE**  
 BETWEEN CAMERINO ST. & FIRST ALLEY  
 NORTH OF PIMENTA AVE.  
**PEPPERWOOD AVE.**  
 BETWEEN CAMERINO ST. & LAKEWOOD BLVD.

PRIVATE CONTRACT NO. 1224  
 W. S. 33  
 SHEET 3 OF 5 SHEETS  
 SCALE: VERT. 1" = 4'  
 HORIZ. 1" = 40' FEB 1950  
 PREPARED IN THE OFFICES OF  
 ENGINEERING SERVICE CORPORATION

NOTE:  
 THE EXISTENCE AND LOCATION OF ANY UNDERGROUND  
 UTILITY PIPES OR STRUCTURES SHOWN ON THESE PLANS ARE FROM  
 THE BEST INFORMATION AVAILABLE AND THE ENGINEERING SERVICE  
 CORPORATION ASSUMES NO RESPONSIBILITY BEYOND THE IN-  
 FORMATION FURNISHED ON THESE APPROVED PLANS.

**ENGINEERING SERVICE CORPORATION**  
 1127 W. WASHINGTON BLVD.  
 LOS ANGELES, CALIF.

APPROVED: *B. Drabbin*  
 COUNTY ENGINEER

APPROVED: *W. S. 33*  
 S.E. M.S.  
 S.W. 150  
 M. Butler

SUB STRUCTURED: S.L.  
 W. O. NO. 5977-1 DWS NO. 17-27-3-1 FEB. 1950 VERT. 1" = 4' HORIZ. 1" = 40' L.S.

FOR LEGEND  
 SEE PLAN NO. S-8-64  
 FOR CONSTRUCTION NOTES SEE SHEET 1

COUNTY OF LOS ANGELES, CALIFORNIA  
 APPROVED: *W. S. 33*  
 COUNTY ENGINEER

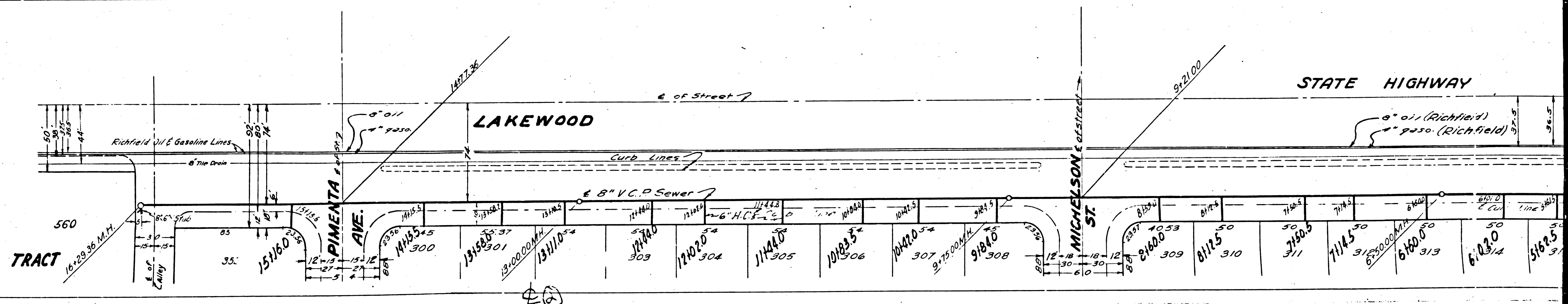
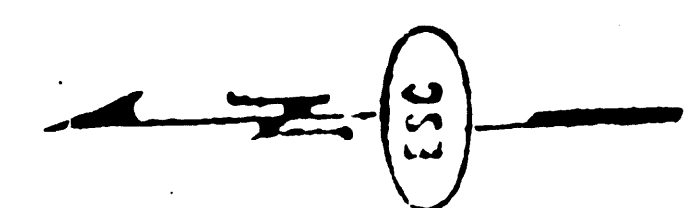
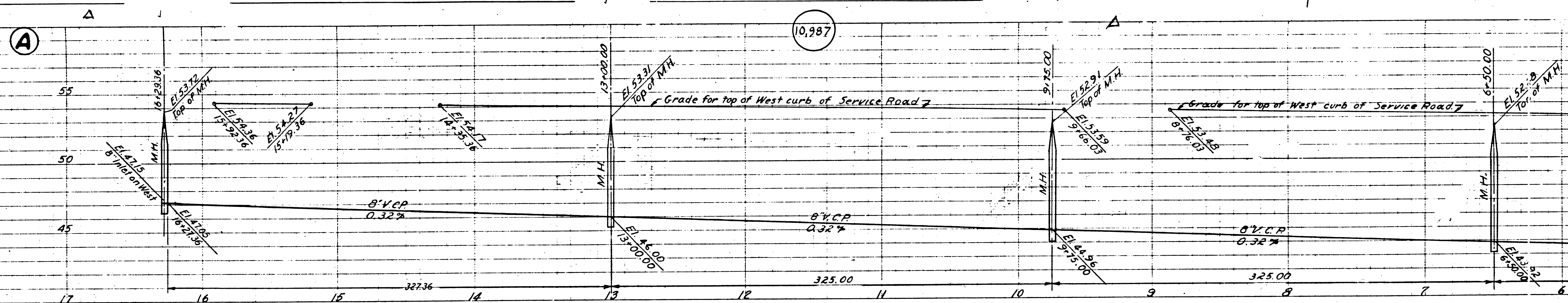
APPROVED: *W. S. 33*  
 CIVIL ENGINEER OF COUNTY  
 SANITATION DISTRICT NO. 2

CHECKED: *W. S. 33* MAR 7 1950  
 OFFICE OF COUNTY ENGINEER, REG. C. E. NO. 1582

REVISION CHECKED: *W. S. 33* 3-24-50

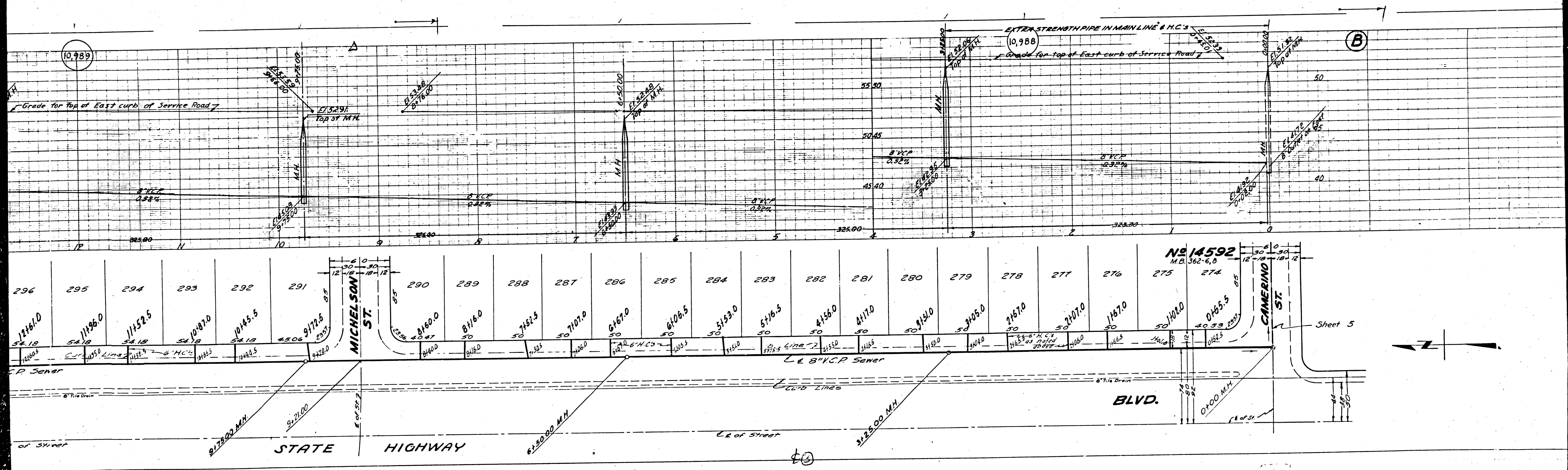
LAKEWOOD BLVD - PEPPERWOOD AVE  
 PLAN 1551  
 W. S. 33  
 1127 W. WASHINGTON BLVD  
 LOS ANGELES, CALIF.





Station	Manhole	Notes
16+28.36	M.H.	Top of M.H. El. 52.72
13+00.00	M.H.	Top of M.H. El. 52.31
10+00.00	M.H.	Top of M.H. El. 52.91
6+50.00	M.H.	Top of M.H. El. 52.50





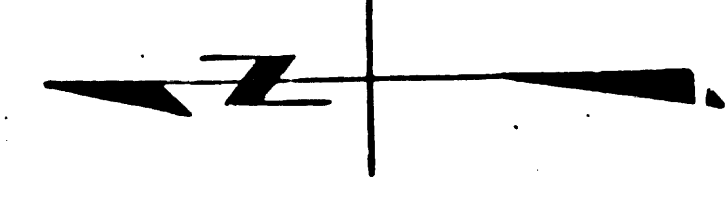
10,989

10,988

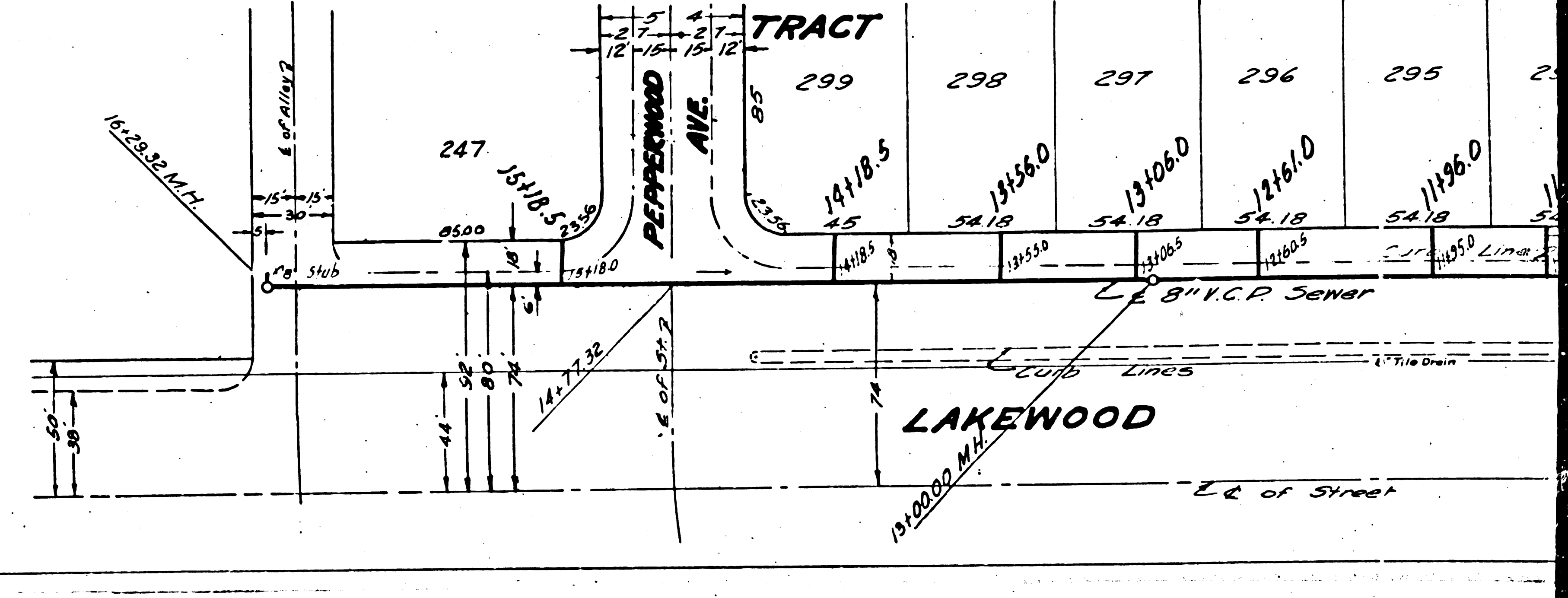
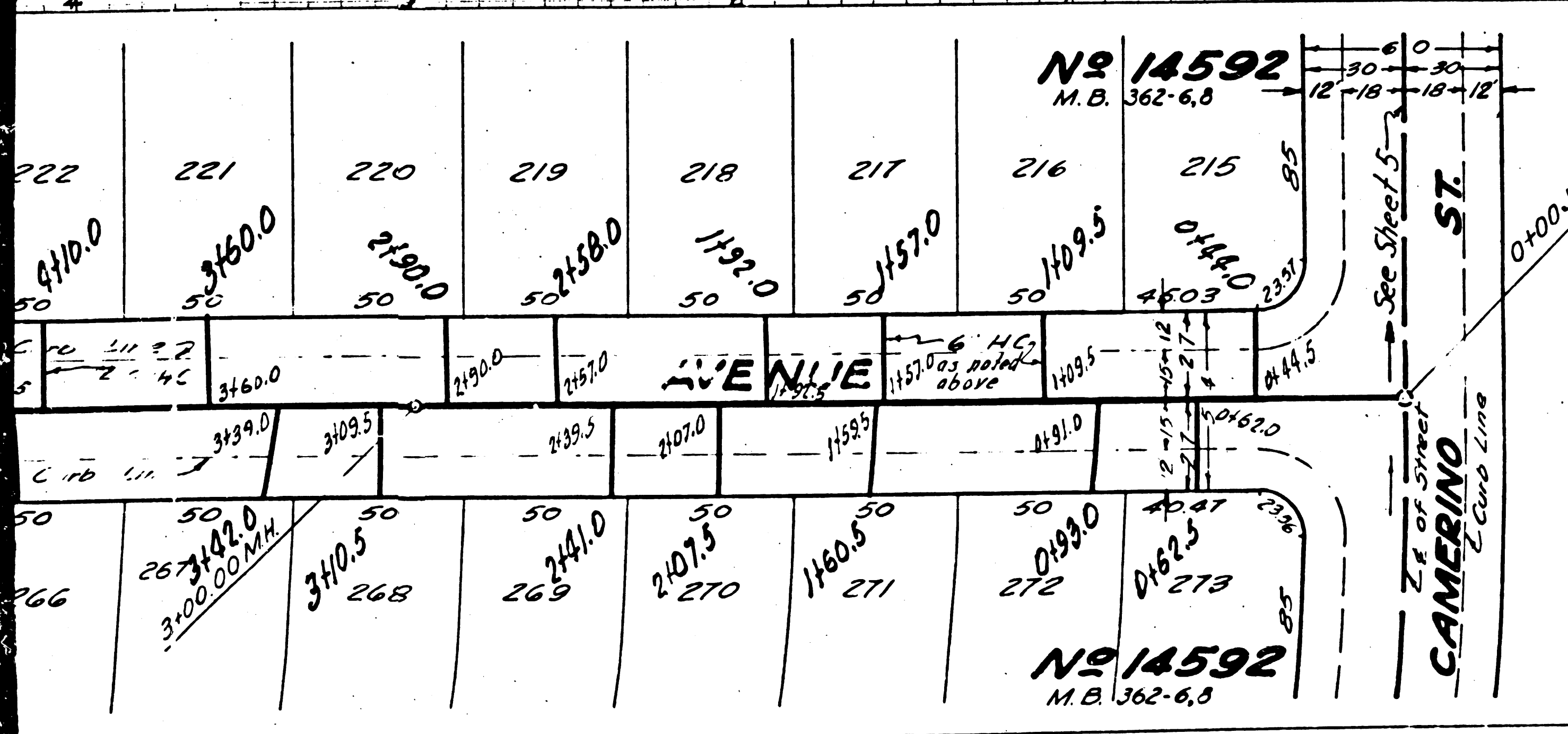
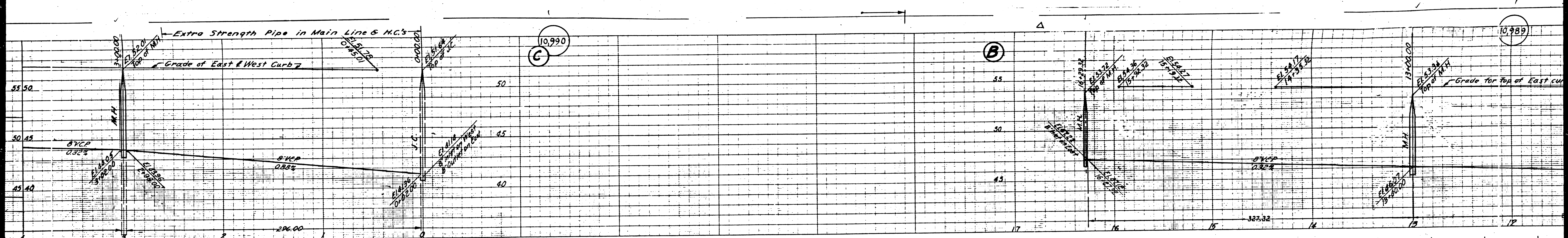
(B)

No 14592  
M.B. 362-6,0

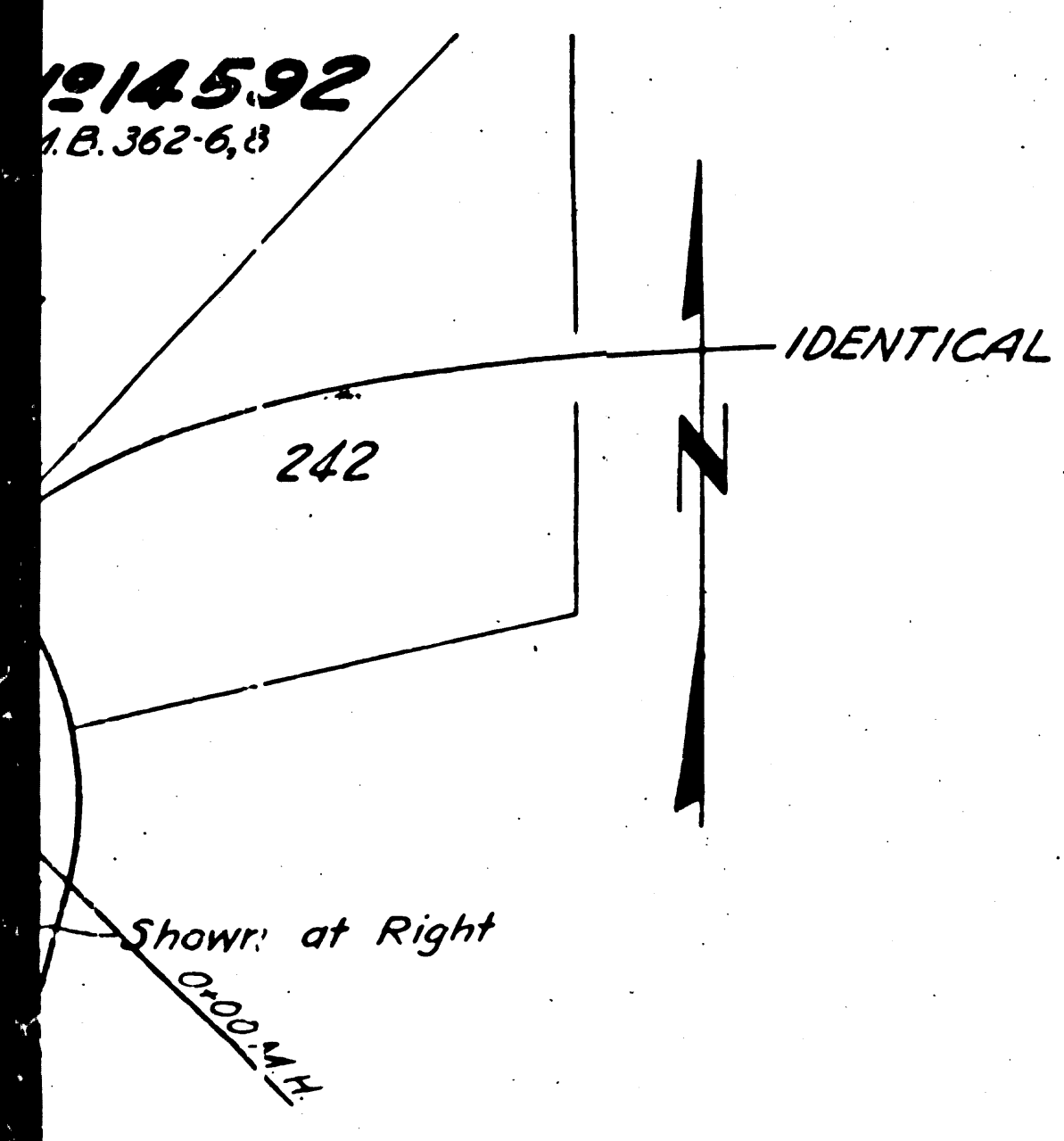
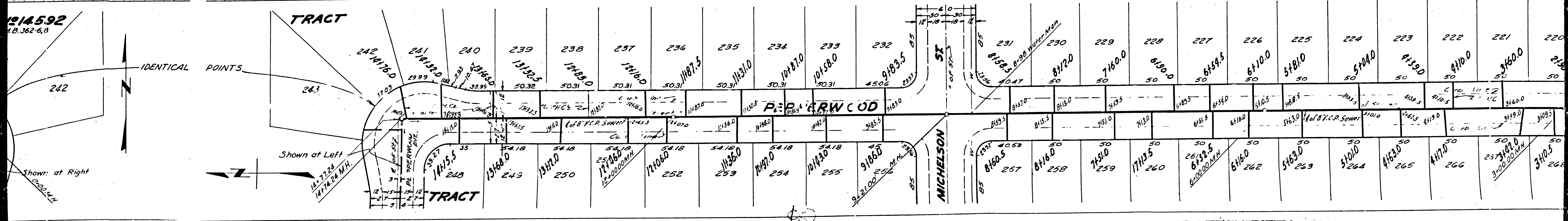
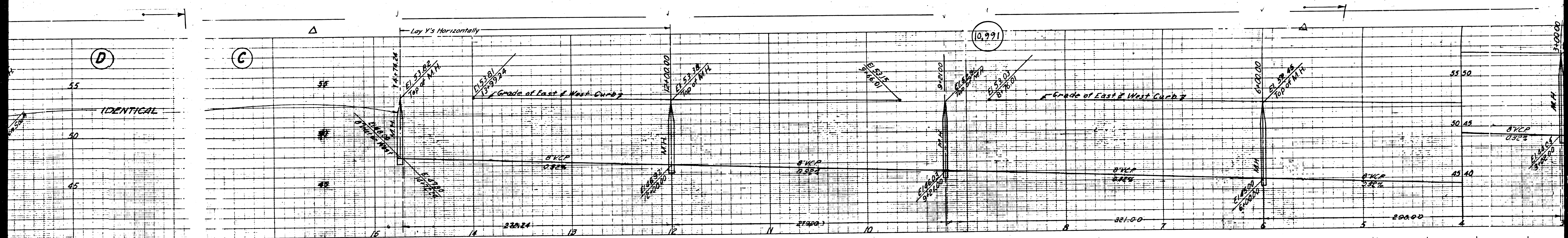
Sheet 5



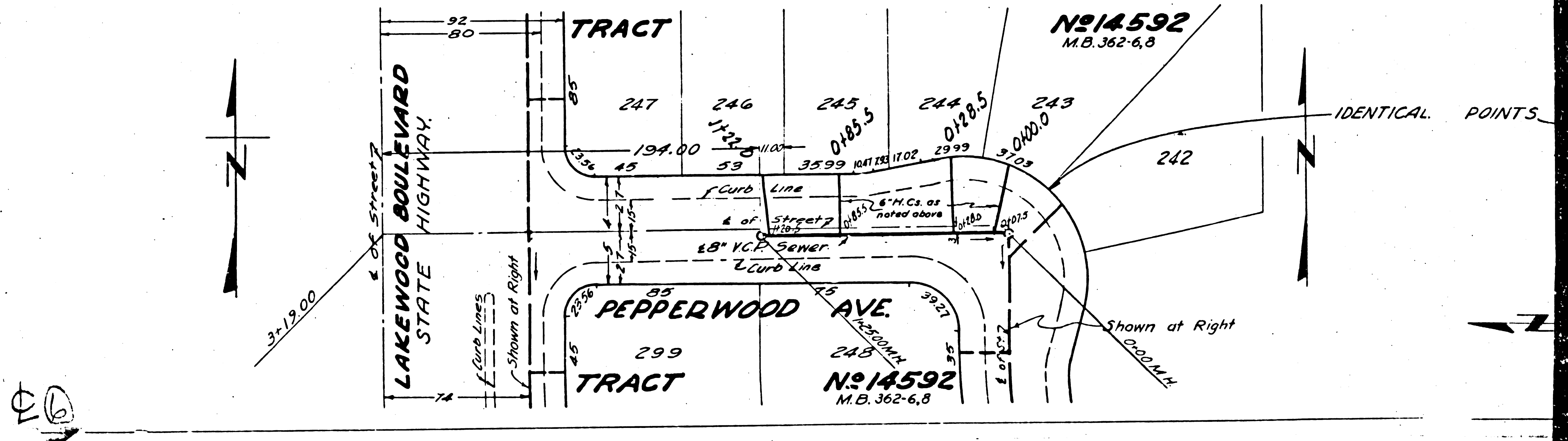
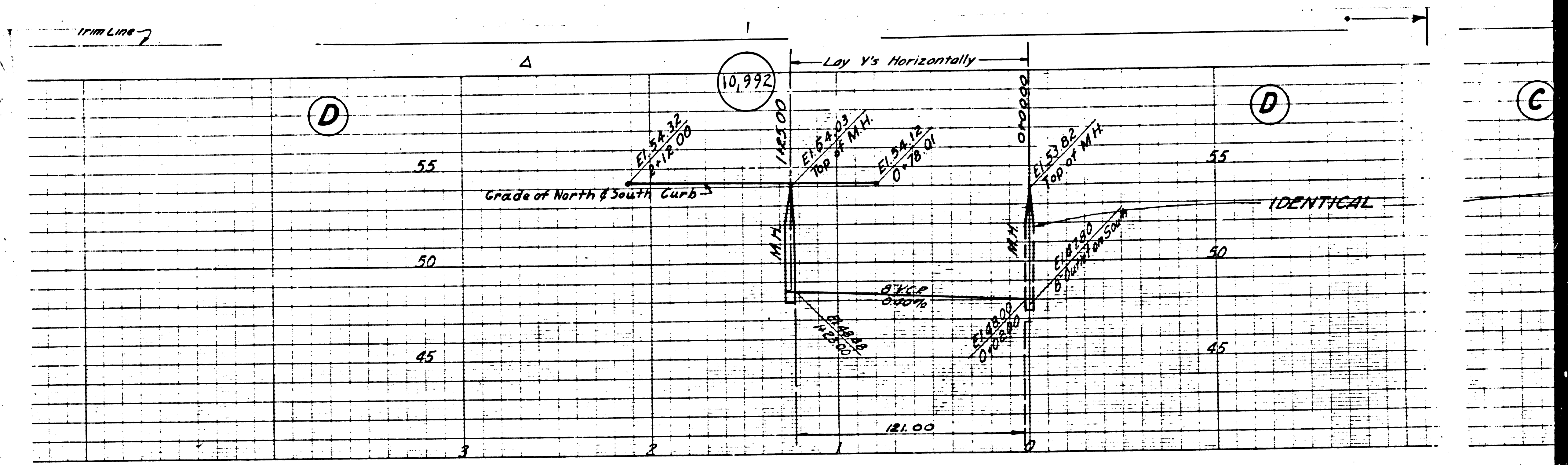




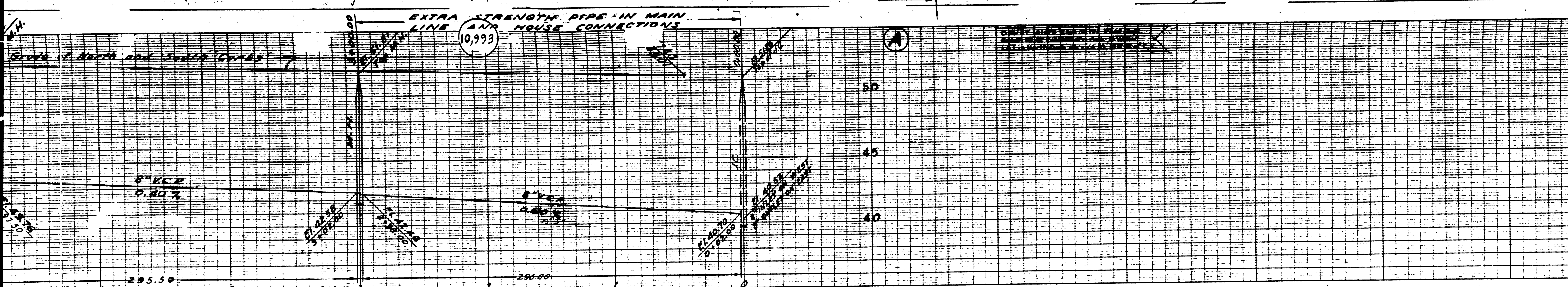






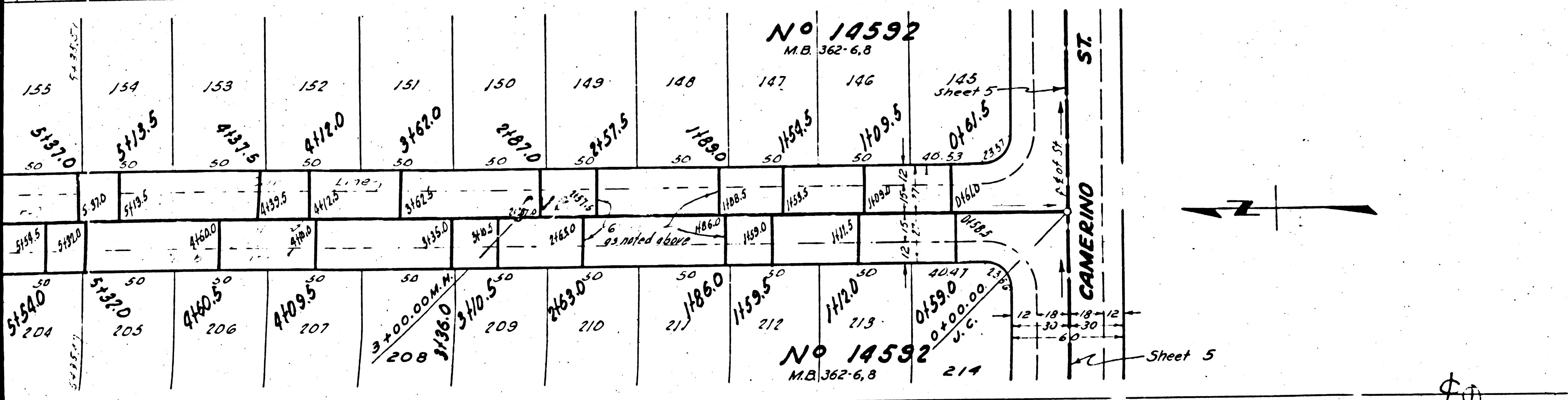






**SANITARY SEWER**  
**BONFAIR AVE.**  
 BETWEEN CAMERINO ST AND EDITH ST  
**BLACKTHORN AVE.**  
 BETWEEN CAMERINO ST AND EDITH ST  
 IN TRACT NO 14552

PRIVATE CONTRACT NO. 1234  
 W. S. 33  
**SHEET 4 OF 5 SHEETS**  
 VERT. 1" = 4'  
 HOR. 1" = 40'  
**FEB 1950**  
 PREPARED IN THE OFFICES OF  
**ENGINEERING SERVICE CORPORATION**



NOTE: THE EXISTENCE AND LOCATION OF ANY UNDERGROUND UTILITY PIPES OR STRUCTURES SHOWN ON THESE PLANS ARE FROM THE BEST INFORMATION AVAILABLE AND THE ENGINEERING SERVICE CORPORATION ASSUMES NO RESPONSIBILITY BEYOND THE INFORMATION FURNISHED ON THESE APPROVED PLANS.

**ENGINEERING SERVICE CORPORATION**  
 1127 W. WASHINGTON BLVD.  
 LOS ANGELES, CALIF.

LOG AND PLAN NO. 5977-1  
 DATE 1-28-31  
 DATE FEB 1950  
 SCALE 1" = 40'  
 DRAWN BY M. Elliott  
 CHECKED BY M. H. G.  
 SUB STRUCTURE NO. 214  
 W. S. 33  
 VERT. 1" = 4'  
 HOR. 1" = 40'

FOR LEGEND SEE PLAN NO. S-44  
 FOR CONSTRUCTION NOTES SEE SHEET 1

COUNTY OF LOS ANGELES, CALIFORNIA  
 APPROVED: *[Signature]*  
 COUNTY ENGINEER  
 APPROVED: *[Signature]*  
 CHECKED: *[Signature]*  
 REVISION CHECKED: *[Signature]*

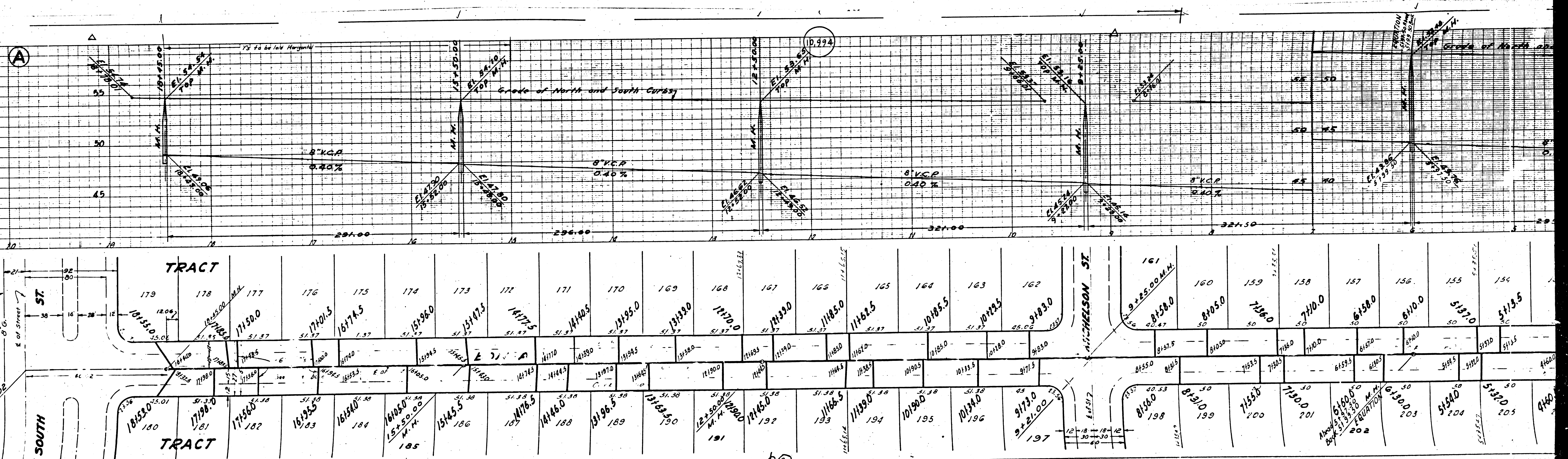
RECEIVED  
 APR 7 1950  
 CIVIL ENGINEERING DEPARTMENT  
 UNIVERSITY OF CALIFORNIA

324-22

*checked by [Signature] 6-16-50*

BLACKTHORN AVE.





TRACT

TRACT

SOUTH ST

NICHOLSON ST

E 71' P

Along Bay

20

A

10,994

Grade of North and South Curbs

Grade of North and South Curbs

8" V.C.P.  
0.40%

8" V.C.P.  
0.40%

8" V.C.P.  
0.40%

8" V.C.P.  
0.40%

179

178

177

176

175

174

173

172

171

170

169

168

167

166

165

164

163

162

161

160

159

158

157

180

181

182

183

184

185

186

187

188

189

190

191

192

193

194

195

196

197

198

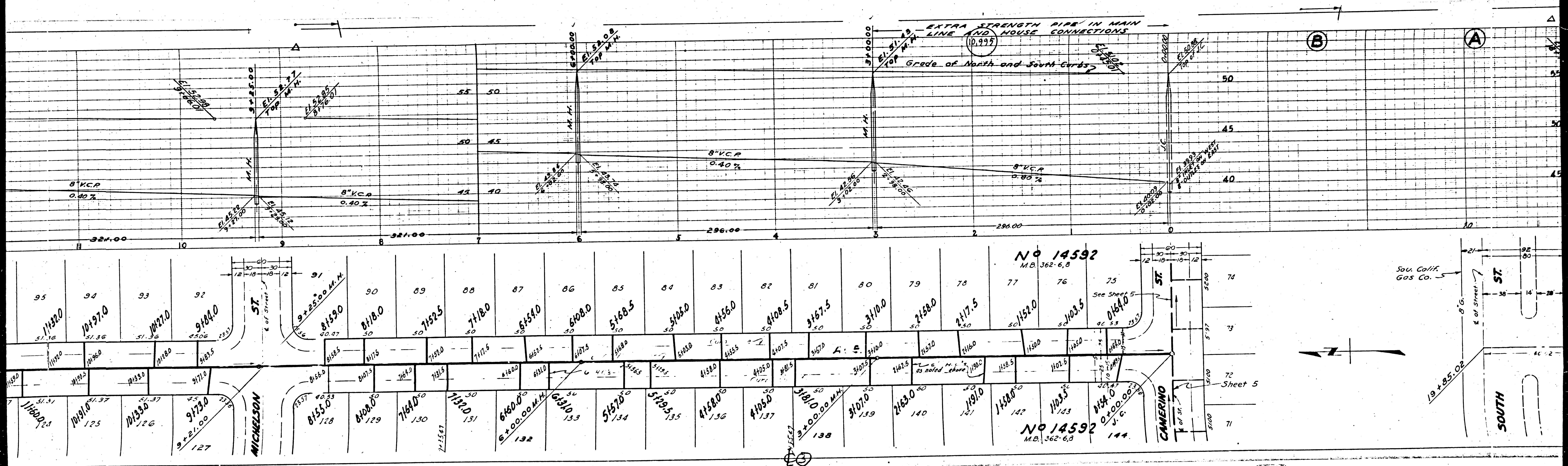
199

200

201

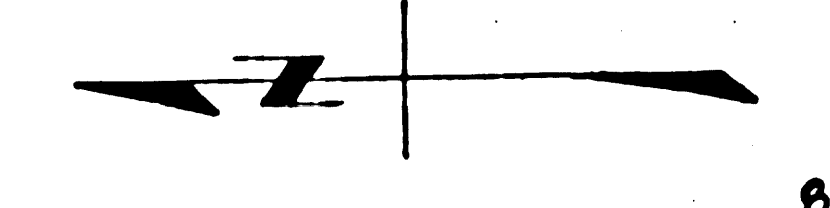
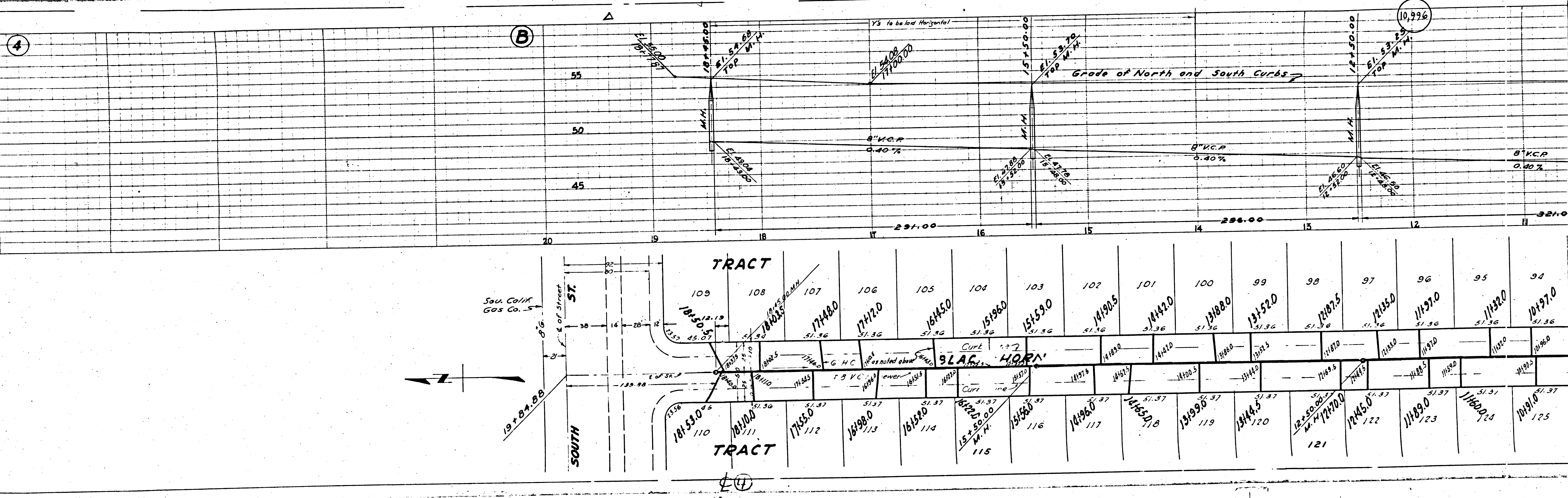
202





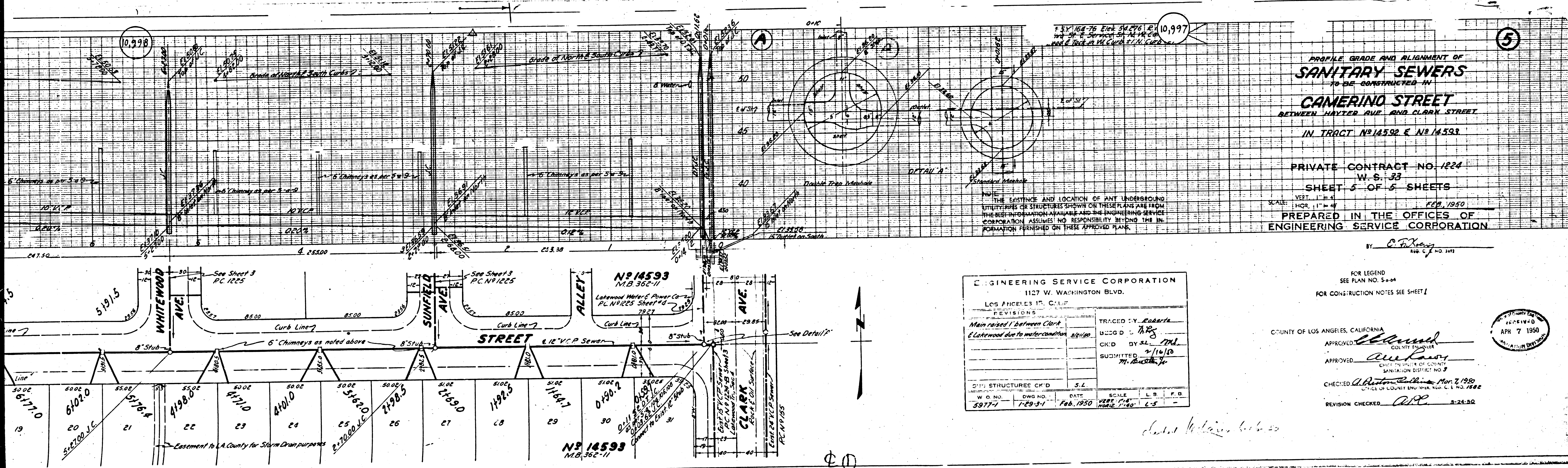


SHEET 4 OF 2 SHEETS  
SOUTH  
SOUTH  
SOUTH



4





PROFILE GRADE AND ALIGNMENT OF  
**SANITARY SEWERS**  
 TO BE CONSTRUCTED IN  
**CAMERINO STREET**  
 BETWEEN HAYTER AVE AND CLARK STREET  
 IN TRACT N<sup>o</sup> 14592 & N<sup>o</sup> 14593

PRIVATE CONTRACT NO. 1224  
 W. S. 33  
 SHEET 5 OF 5 SHEETS  
 FEB. 1950  
 PREPARED IN THE OFFICES OF  
**ENGINEERING SERVICE CORPORATION**

BY *C. F. Keary*  
 REG. C. E. NO. 2143

**ENGINEERING SERVICE CORPORATION**  
 1127 W. WASHINGTON BLVD.  
 LOS ANGELES 17, CALIF.

REVISIONS

Main raised 1' between Clark & Lakewood due to water condition above

TRACED BY *Roberts*  
 DSGD BY *TKS*  
 CK'D BY *SL, ML*  
 SUBMITTED *2/16/50*  
*M. B. Smith, Jr.*

EXISTING STRUCTURES CK'D *S.L.*

W. O. NO.	DWG. NO.	DATE	SCALE	L. B.	P. O.
5977-1	1-29-51	Feb. 1950	1/8" = 1'-0"	L.S.	-

FOR LEGEND  
 SEE PLAN NO. S-34  
 FOR CONSTRUCTION NOTES SEE SHEET 1

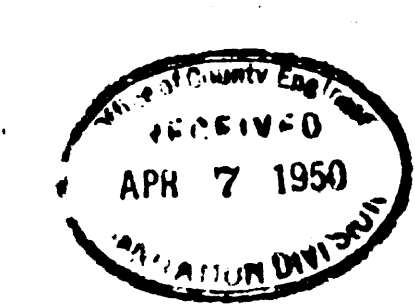
COUNTY OF LOS ANGELES, CALIFORNIA

APPROVED *[Signature]*  
 COUNTY ENGINEER

APPROVED *[Signature]*  
 CHIEF ENGINEER OF COUNTY  
 SANITATION DISTRICT NO. 3

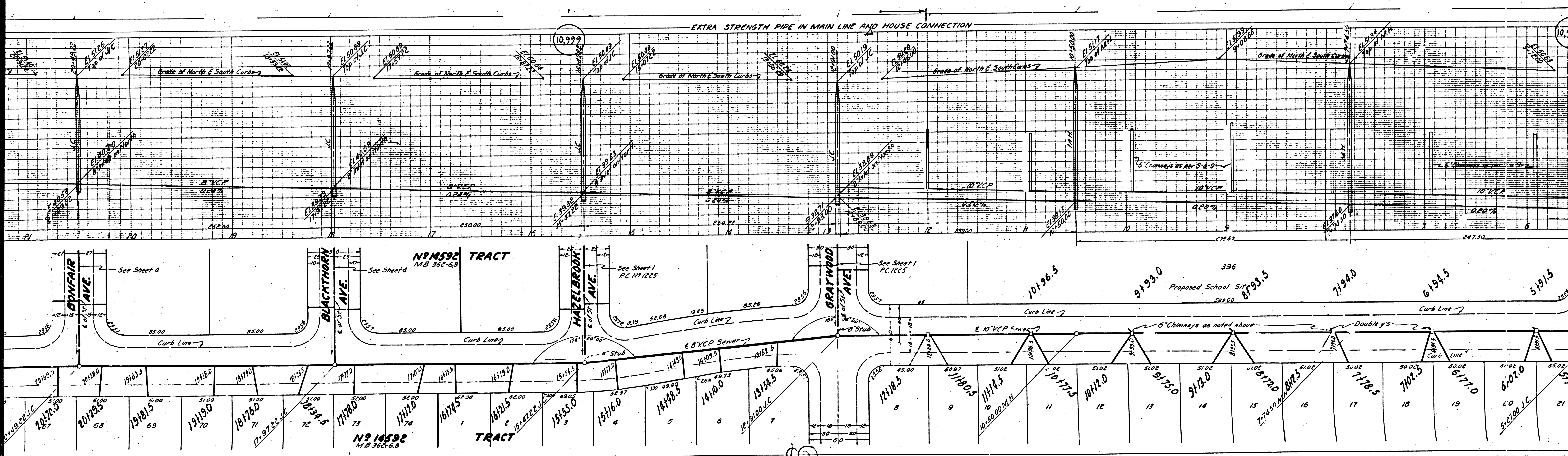
CHECKED *[Signature]* Mar. 7, 1950  
 CHIEF OF COUNTY ENGINEER REG. C. E. NO. 1882

REVISION CHECKED *[Signature]* 3-24-50



CAMERINO ST  
 W. S. 33  
 SHEET 5 OF 5





EXTRA STRENGTH PIPE IN MAIN LINE AND HOUSE CONNECTION

Grade of North & South Curbs

Grade of North & South Curbs

Grade of North & South Curbs

Grade of North & South Curbs

Grade of North & South Curbs

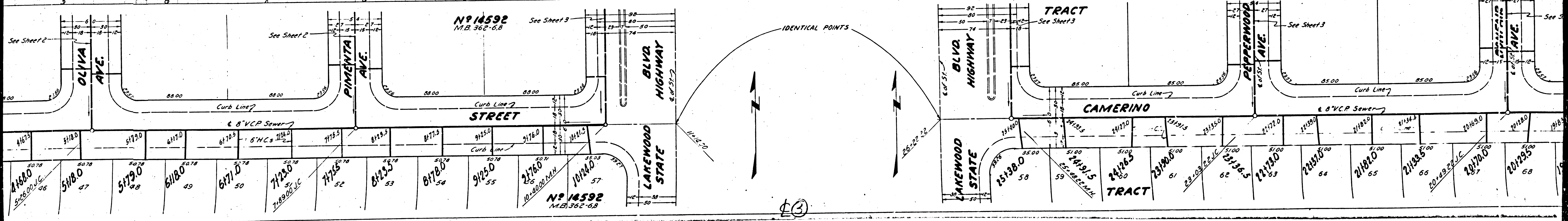
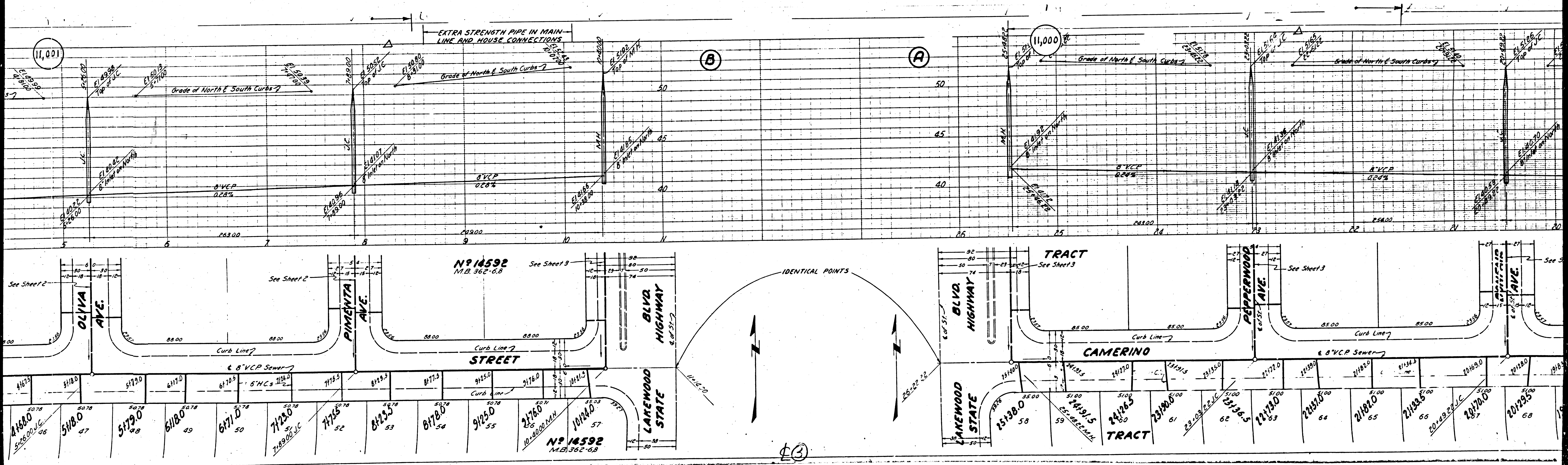
N 14592 TRACT  
M.B. 362-6,8

N 14592 TRACT  
M.B. 362-6,8

Proposed School Site  
582.00

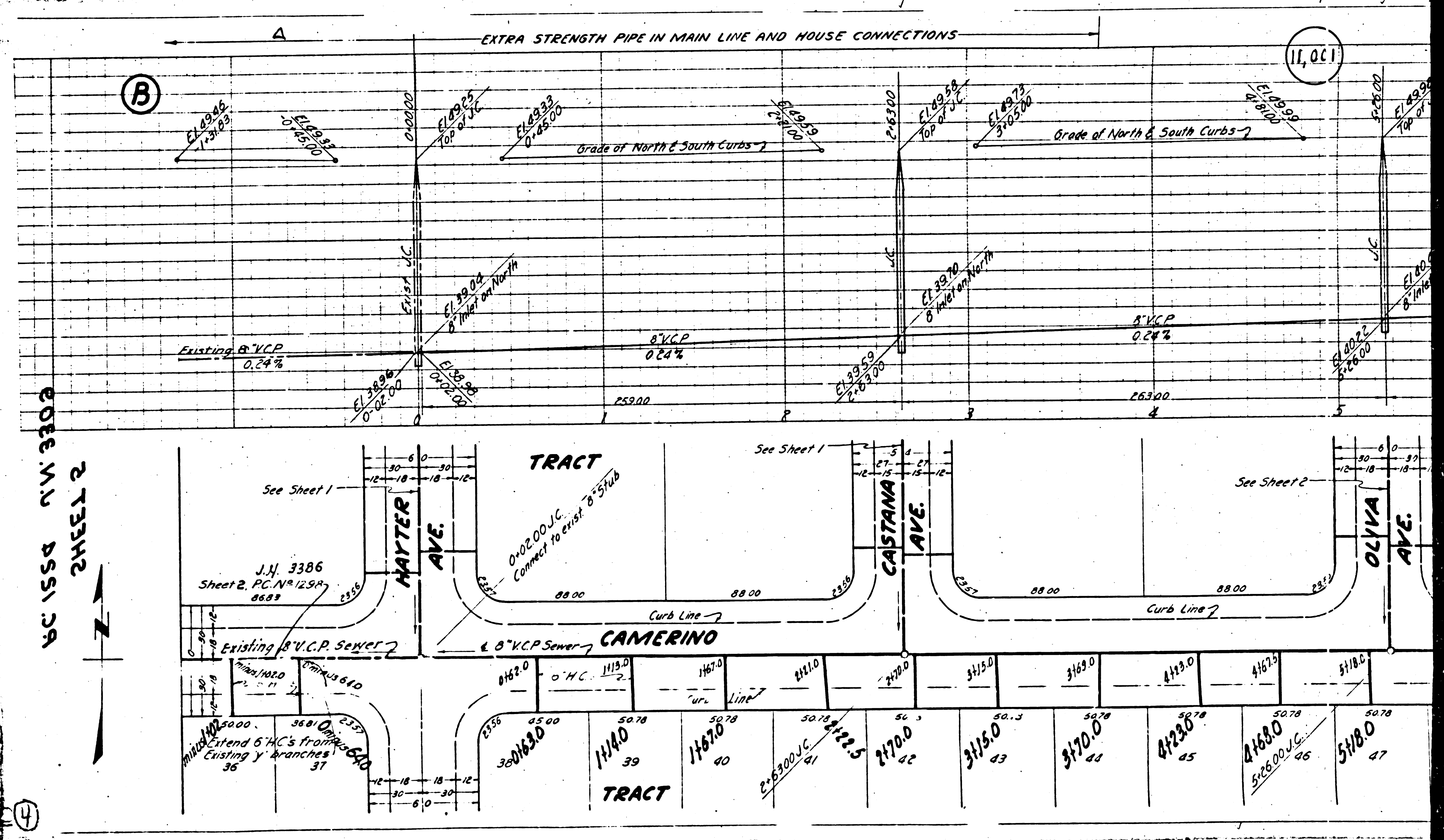
20169.5	20180	19183.5	19180	18190	18185	17180	17175	16180	15185	14190	14185	13190	12195	11190	10195	9190	8195	7190	6195	5190
20170.5	20129.5	19181.5	19180	18190	18185	17180	17175	16180	15185	14190	14185	13190	12195	11190	10195	9190	8195	7190	6195	5190
68	69	70	71	72	73	74	75	76	77	78	79	80	81	82	83	84	85	86	87	88





③





11554 N.W. 3100  
 SHEET 2  
 DSI CA

(B)

(11,001)

(E)