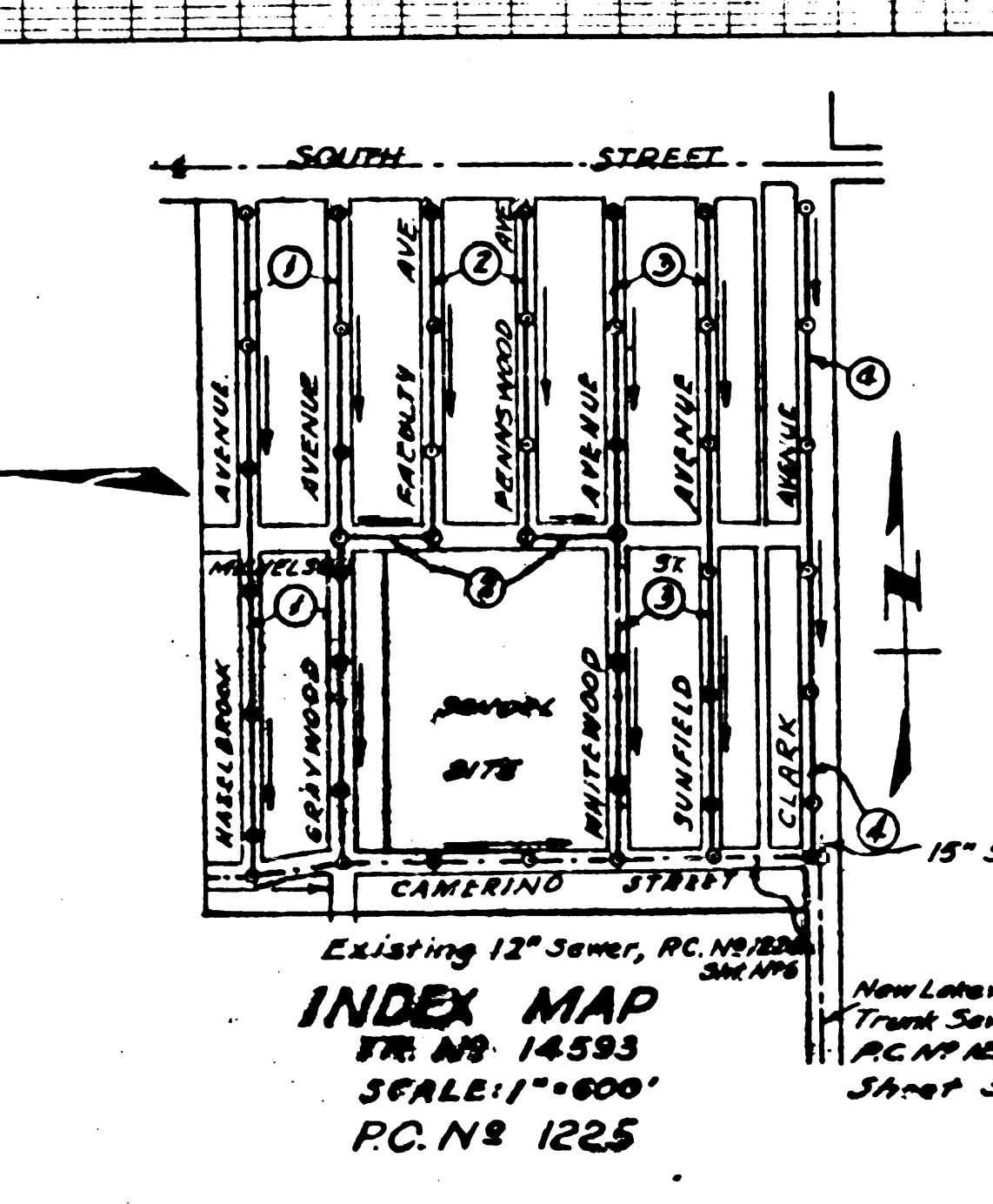


1. USE STANDARD MANHOLE FRAMES AND COVERS.  
 2. USE STANDARD STRENGTH PIPE EXCEPT AS NOTED.  
 3. USE CEMENT MORTAR FOR ALL UTILITY CONNECTIONS.  
 4. RESURFACE ALL TRENCH WITHIN PAVED AREAS IN ACCORDANCE WITH THE PERMIT.  
 5. ENCASE EXPOSED PORTION OF SEWER AT POINTS OF INTERFERENCE WITH POLES, SIGNALS, ETC.  
 6. HOUSE CONNECTIONS TO BE MADE AT PROPERTY LINE.  
 7. ALL STRUCTURES SHALL BE BRICK SEWER STRUCTURES, 3'-6\"/>

**PROFILE GRADE AND ALIGNMENT OF  
 SANITARY SEWERS  
 TO BE CONSTRUCTED IN  
 GRAYWOOD AVE  
 BETWEEN CAMERINO ST. & SOUTH STREET  
 HAZELBROOK AVENUE  
 BETWEEN CAMERINO ST. & SOUTH STREET  
 INTERACT NO. 14593**

PRIVATE CONTRACT NO. 1225  
 W.S. 37  
 SHEET 1 OF 4 SHEETS  
 NOV. 1949  
 PREPARED IN THE OFFICES OF  
 ENGINEERING SERVICE CORPORATION

284	285	286	287	288	289	290	291	292
41660	41220	39440	39160	31680	11910	11640	11470	11200
51020	5113	5113	5113	5113	5113	5113	5113	5113
41715	41715	31935	31715	31715	31715	31715	31715	31715
41770	41745	31935	31715	31715	31715	31715	31715	31715
41770	41745	31935	31715	31715	31715	31715	31715	31715
41770	41745	31935	31715	31715	31715	31715	31715	31715
41770	41745	31935	31715	31715	31715	31715	31715	31715



NOTE: THE EXISTENCE AND LOCATION OF ANY UNDERGROUND UTILITY PIPES OR STRUCTURES SHOWN ON THESE PLANS ARE FROM THE BEST INFORMATION AVAILABLE AND THE ENGINEERING SERVICE CORPORATION ASSUMES NO RESPONSIBILITY BEYOND THE INFORMATION FURNISHED ON THESE APPROVED PLANS.

**ENGINEERING SERVICE CORPORATION**  
 1127 W. WASHINGTON BLVD.  
 LOS ANGELES 15, CALIF.

TRACED BY: *Lawson*  
 DESG'D BY: *M.H.*  
 CK'D BY: *M.H.*  
 SUBMITTED: *M.H.*

W. O. NO.	DWS NO.	DATE	SCALE	L. B.	F. B.
2977-2	2	7-3-47	NOV. 1949	1" = 20'	L-49

NOTE: GRADES TO WHICH THIS IMPROVEMENT IS TO BE CONSTRUCTED ARE SHOWN ON PLANS AND PROFILES. GRADE POINTS FOR TOP OF CURB, CENTER LINE OF STREETS, CENTER LINE OF ALLEYS ARE SHOWN BY CIRCLES ON PROFILES. AT ALL POINTS BETWEEN DESIGNATED POINTS THE PIPE SHALL BE ESTABLISHED SO AS TO CONFORM TO A STRAIGHT LINE DRAWN BETWEEN SAID DESIGNATED POINTS. ELEVATIONS ARE IN FEET ABOVE U. S. G. S. DATUM OF MEAN SEA LEVEL.

THIS DRAWING AND THE DATA HEREON ARE HEREBY MADE A PART OF THE SPECIFICATIONS. WORK SHALL BE CONSTRUCTED ACCORDING TO SPECIFICATIONS ON FILE IN THE OFFICE OF THE COUNTY ENGINEER AND SHALL BE PROSECUTED ONLY IN THE PRESENCE OF THE COUNTY ENGINEER. BEFORE WORK CAN BE STARTED THE CONTRACTOR MUST OBTAIN A PERMIT TO EXCAVATE IN COUNTY STREETS FROM THE L. A. COUNTY ROAD DEPT. 211 SO. MAIN ST. AND MAKE A DEPOSIT WITH THE COUNTY ENGINEER, 828 COUNTY ENGINEERING BUILDING SUFFICIENT TO COVER THE COST OF CONSTRUCTION INSPECTION AND RECORD PLANS.

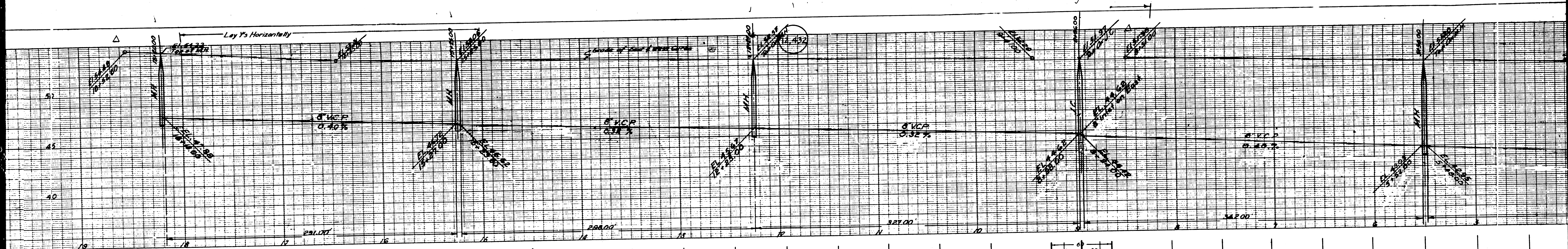
APPROVAL OF THIS PLAN BY THE COUNTY OF LOS ANGELES DOES NOT CONSTITUTE A REPRESENTATION AS TO THE ACCURACY OR THE EXISTENCE OR NON-EXISTENCE OF ANY UNDERGROUND UTILITY, PIPE OR STRUCTURE WITHIN THE LIMITS OF THIS PROJECT. THIS NOTE APPLIES TO ALL SHEETS.

APPROVED: *James*  
 COUNTY ENGINEER

APPROVED: *W.S.*  
 CHIEF ENGINEER OF COUNTY SANITATION DISTRICT NO. 3

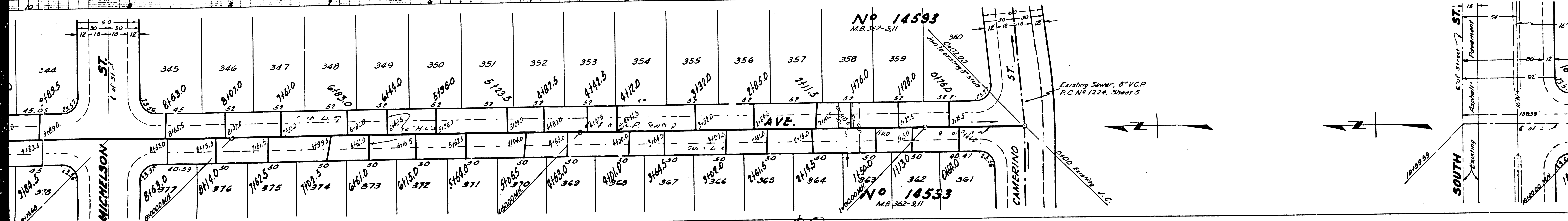
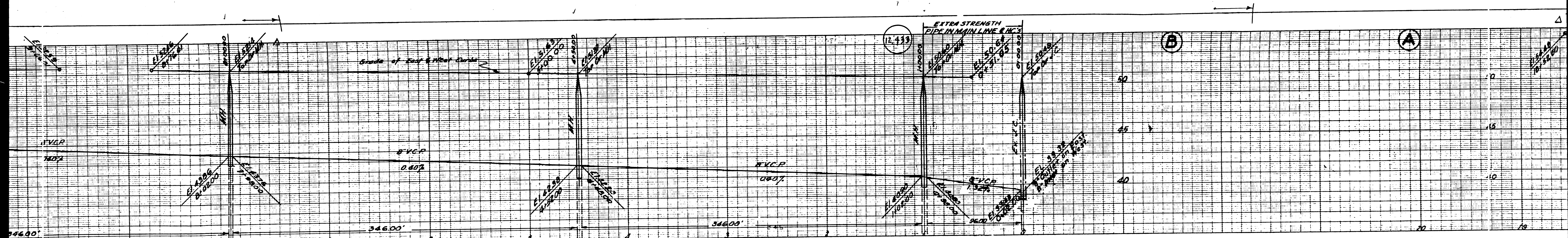
CHECKED: *W.S.*  
 CHIEF OF COUNTY ENGINEER, REG. C. E. NO. 1225

MAN 30 1950



TRACT	259	260	261	262	263	264	265	266	267	268	269	270	271	272	273	274	275	276	277	278	279	280	281	282	283	284	285	
16" R.C. Water Line (Montana Land Co.)	17130.0	17129.5	17129.0	16990.0	15174.0	15447.0	14660.0	14120.0	13151.0	12913.5	12665.5	12101.0	11600.0	11111.5	10446.0	10060.0	95916.0	8134.5	7774.5	7127.0	6157.5	6123.0	5176.5	5103.0	4166.0	4122.0	4122.0	
8" V.C.P. as noted above	51.37	51.34	51.34	51.34	51.34	51.34	51.34	51.34	51.34	51.34	51.34	51.34	51.34	51.34	51.34	51.34	51.34	51.34	51.34	51.34	51.34	51.34	51.34	51.34	51.34	51.34	51.34	
TRACT	326	325	324	323	322	321	320	319	318	317	316	314	313	311	310	309	308	307	306	305	304	303	302	301	301	300	300	
16" R.C. Water Line	18123.0	17140.0	17135.0	16985.0	16100.0	15160.0	14190.0	14176.0	13180.0	12120.0	11150.0	10180.0	9158.0	8161.0	7123.0	6158.0	5106.0	4179.0	3150.0	2150.0	1150.0	1150.0	1150.0	1150.0	1150.0	1150.0	1150.0	1150.0
8" V.C.P. as noted above	51.35	51.35	51.35	51.35	51.35	51.35	51.35	51.35	51.35	51.35	51.35	51.35	51.35	51.35	51.35	51.35	51.35	51.35	51.35	51.35	51.35	51.35	51.35	51.35	51.35	51.35	51.35	

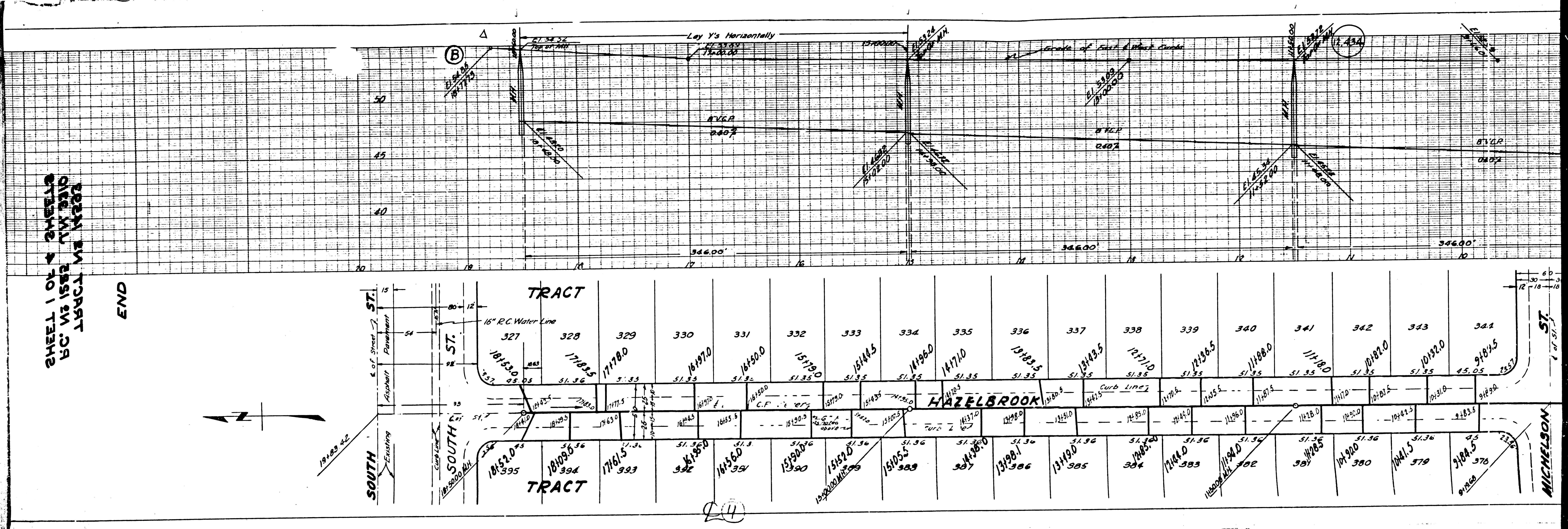
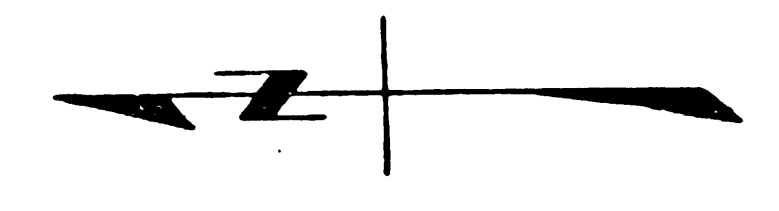
22

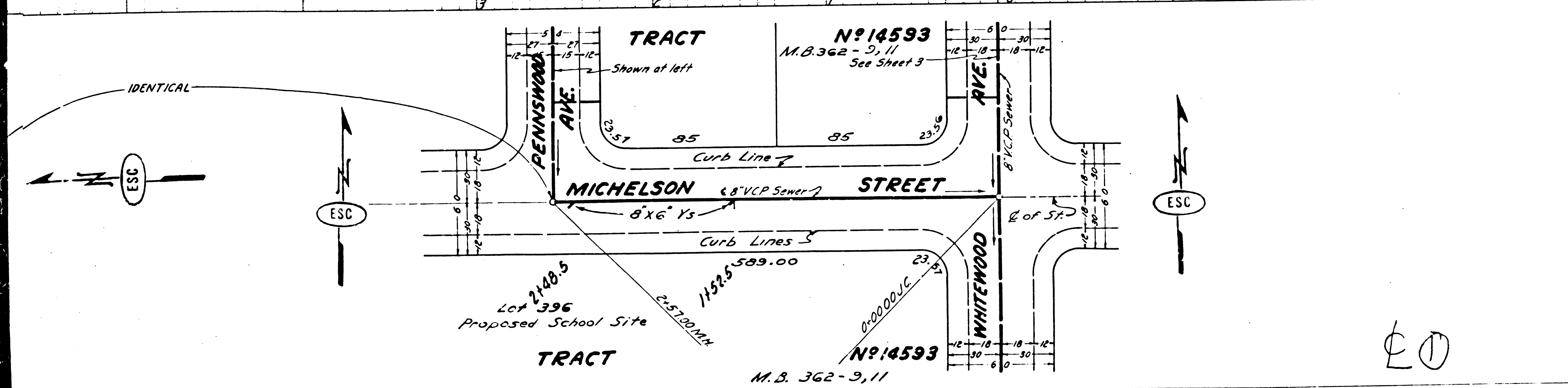
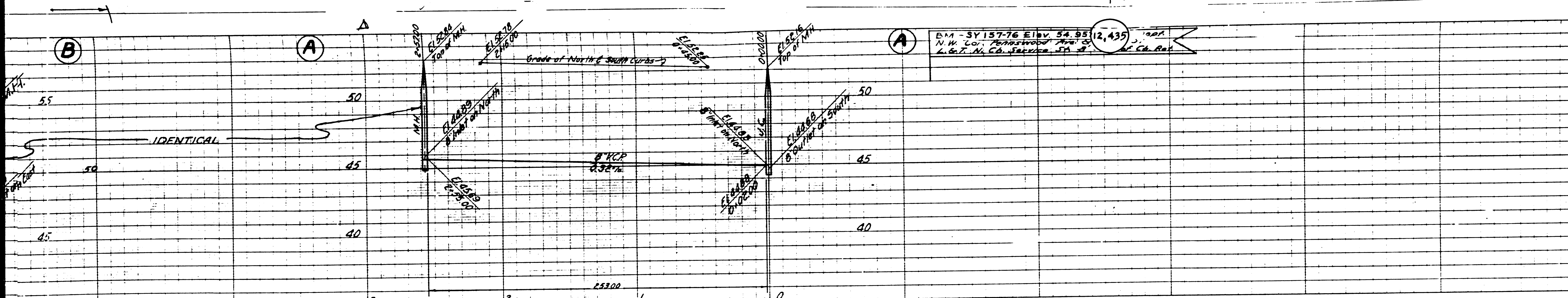


(2)

SHEET 1 OF 2 SHEETS  
FROM TRACT  
CASE NO. 1831 IN CA  
FILE NO. 1017387

END





PROFILE GRADE AND ALIGNMENT OF  
**SANITARY SEWERS**  
 TO BE CONSTRUCTED IN  
**PENNSWOOD AVENUE**  
 BETWEEN MICHELSON ST AND SOUTH ST  
**FACULTY AVENUE**  
 BETWEEN MICHELSON ST AND SOUTH ST  
**MICHELSON STREET**  
 BETWEEN FACULTY AVE AND GRAYWOOD AVE  
 BETWEEN PENNSWOOD AVE AND WHITEWOOD AVE  
 IN TRACT N°14593

PRIVATE CONTRACT NO. 1225  
 W. S. 33  
 SHEET 2 OF 4 SHEETS  
 SCALE: VERT. 1" = 4'      HOR. 1" = 40'      NOV. 1949  
 PREPARED IN THE OFFICES OF  
 ENGINEERING SERVICE CORPORATION

BY *E. F. Roberts*  
REG. C. 15 1911

ENGINEERING SERVICE CORPORATION  
 1127 W. WASHINGTON BLVD.  
 LOS ANGELES 17, CALIF.

TRACED BY *ROBERTS*  
 DESIGNED BY *H. L. G.*  
 CHECKED BY *ml*  
 SUBMITTED *M. Dickhoff*

SUB STRUCTURES CHECKED BY *ml*  
 W. D. NO. *5977-2*    DATE *2-8-3-7 NOV 1949*    SCALE *1" = 4'*    L. B. *L-5*

FOR LEGEND SEE PLAN NO. S-24  
 FOR CONSTRUCTION NOTES SEE SHEET 1

COUNTY OF LOS ANGELES, CALIFORNIA  
 APPROVED: *[Signature]*  
 PREPARED: *[Signature]*  
 CHECKED: *A. Weston Collins 3-23-50*

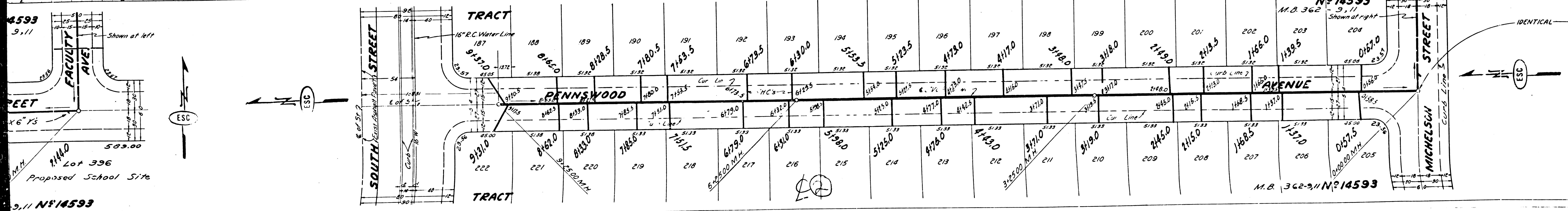
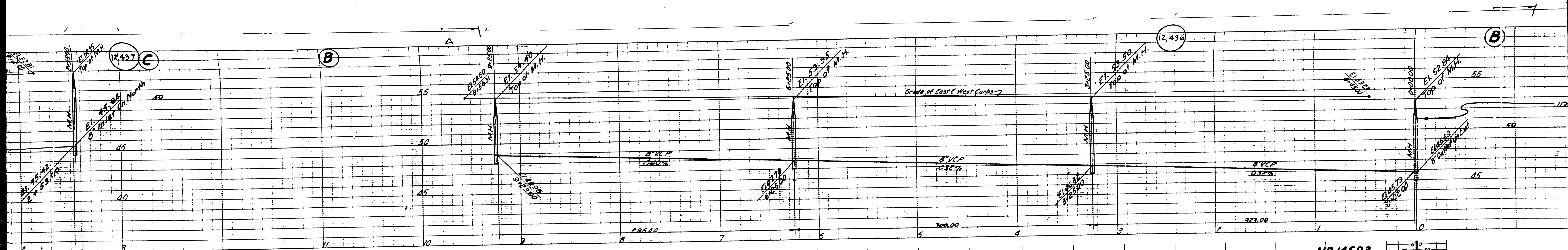
APR 13 1950  
 CIVIL ENGINEER

SANITARY SEWERS IN PENNSWOOD AVE 1111 S. 1552 N.W. 3310

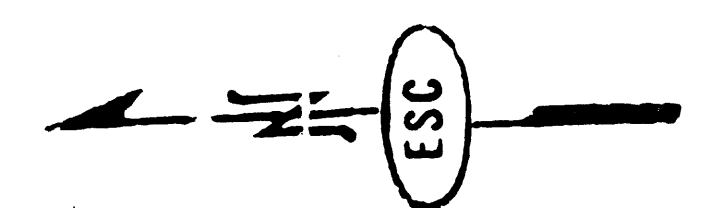
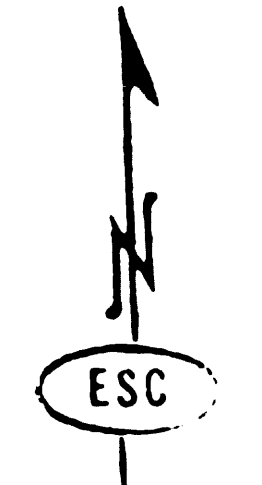
EO

*done at 11/11/49*

82%

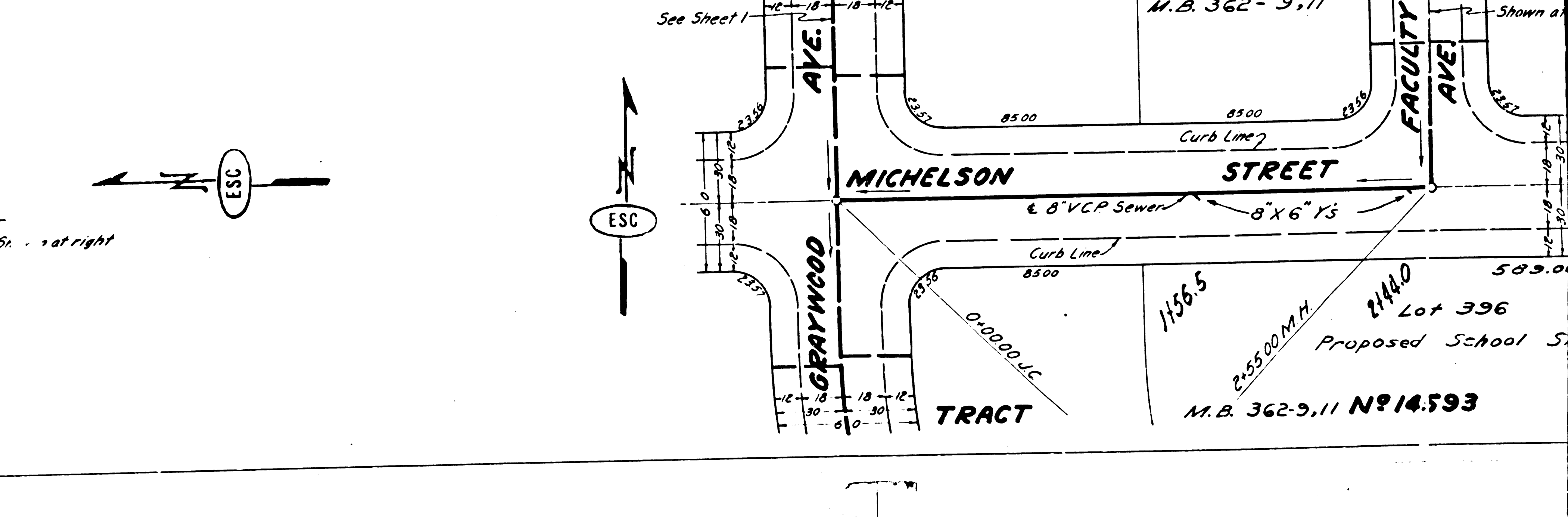
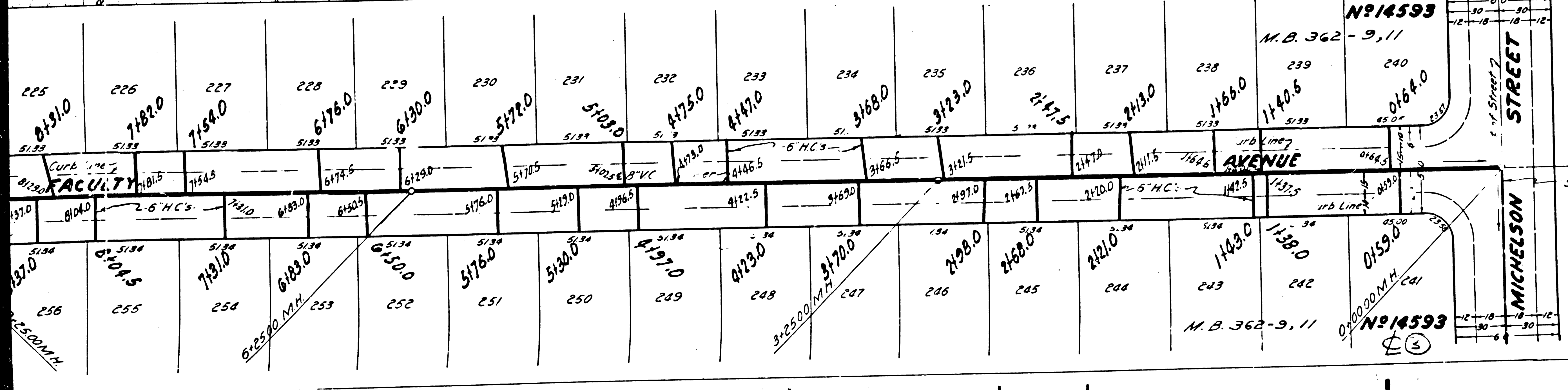
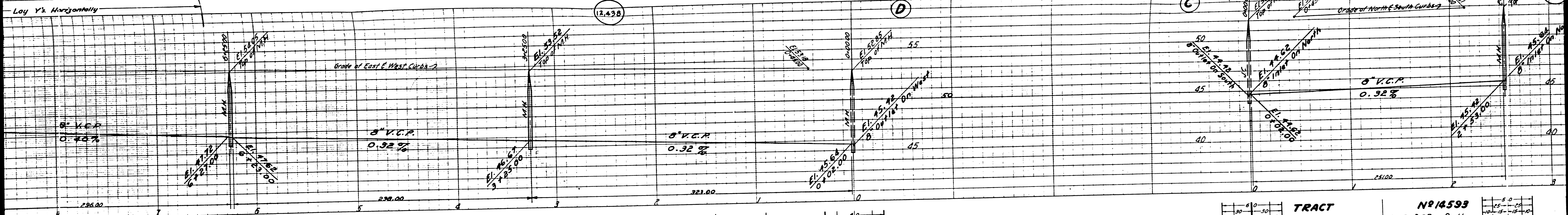


14593  
 9, 11  
 FACULTY AVE  
 503.00  
 Lot 396  
 Proposed School Site  
 9, 11 N 14593



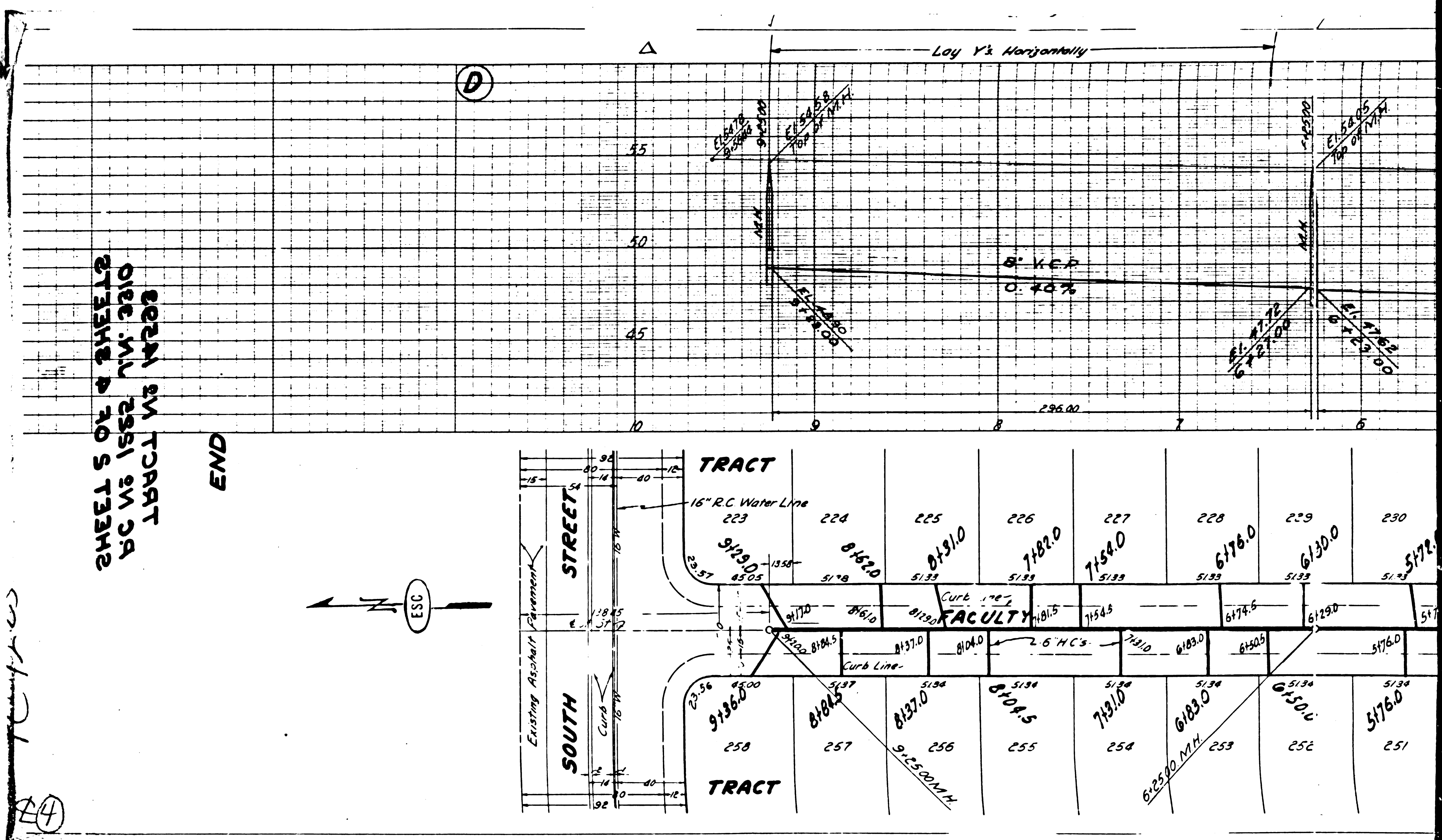
IDENTICAL

M.B. 362-911 N 14593



SHEET 5 OF 8 SHEETS  
SOUTH 5TH TRACT  
S.C. 1552 N.W. 3310  
TRACT 141722

END

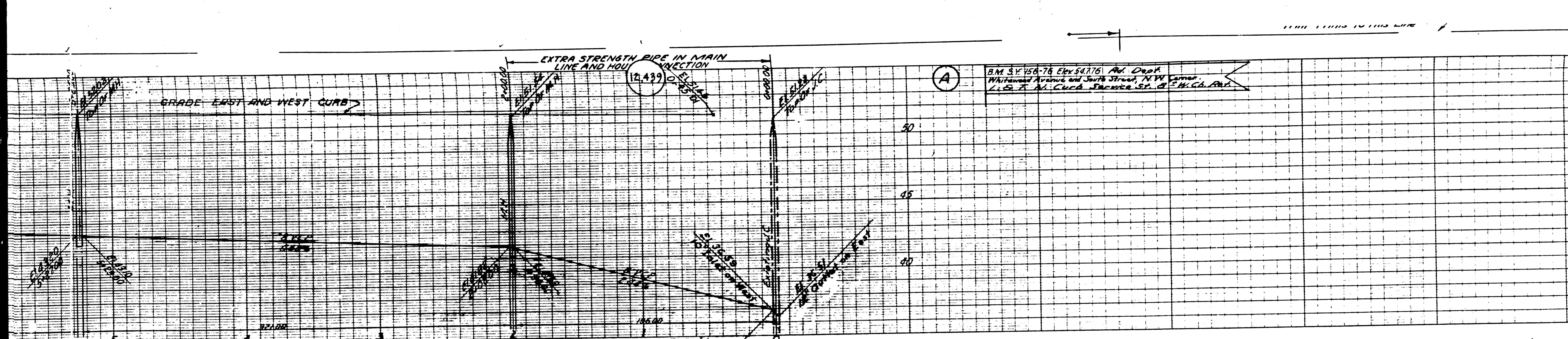


(D)

(33)

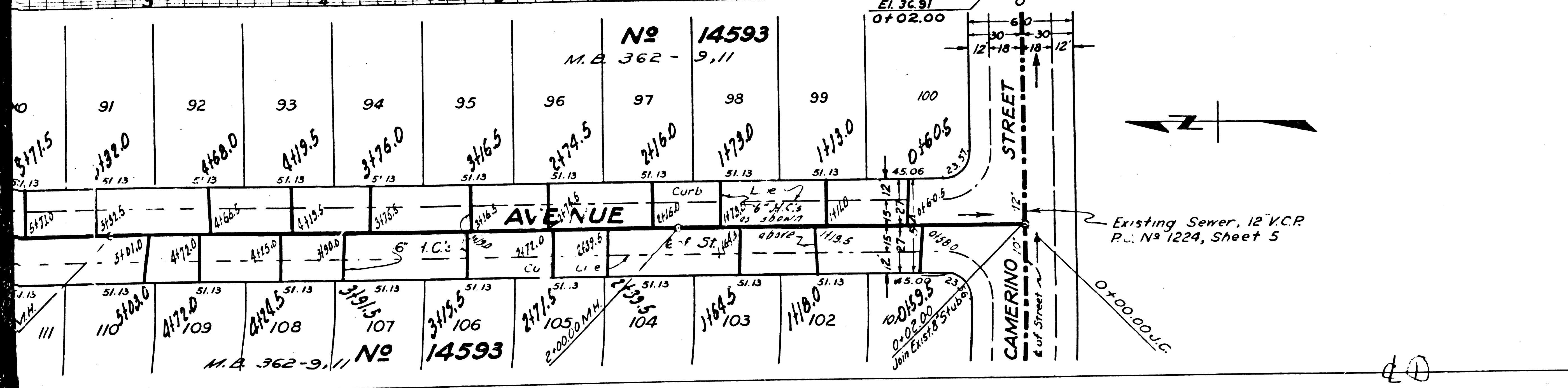
(24)





PROFILE, GRADE AND ALIGNMENT OF  
**SANITARY SEWERS**  
 TO BE CONSTRUCTED IN  
**SUNFIELD AVENUE**  
 BETWEEN CAMERINO ST. AND SOUTH ST.  
**WHITEWOOD AVENUE**  
 BETWEEN CAMERINO ST. AND SOUTH ST.  
 IN TRACT NO. 14593.

PRIVATE CONTRACT NO. 1223  
 W. S. 33  
 SHEET 3 OF 4 SHEETS  
 SCALE: VERT. 1" = 4'  
 HOR. 1" = 50'  
 NOVEMBER 1950  
 PREPARED IN THE OFFICES OF  
 ENGINEERING SERVICE CORPORATION  
 BY: P. F. ...



ENGINEERING SERVICE CORPORATION  
 1127 W. WASHINGTON BLVD.  
 LOS ANGELES, CALIF.

PROJECT NO.	1223	DATE	NOV 1950
DESIGNED BY	E. Preble	CHECKED BY	M. J. ...
DRAWN BY	M. J. ...	SCALE	1" = 50'
DATE	NOV 1950	PROJECT	1223

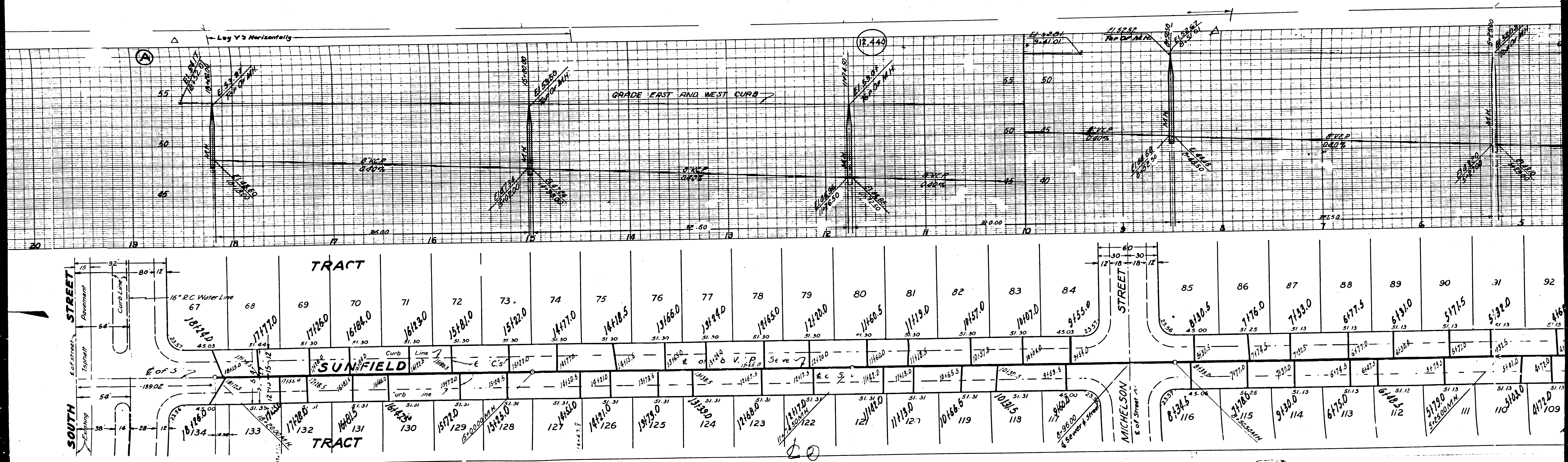
SUB. STRUCTURES: 12" V.C.R. 104  
 12" V.C.R. 103  
 12" V.C.R. 102  
 12" V.C.R. 101  
 12" V.C.R. 100  
 12" V.C.R. 99  
 12" V.C.R. 98  
 12" V.C.R. 97  
 12" V.C.R. 96  
 12" V.C.R. 95  
 12" V.C.R. 94  
 12" V.C.R. 93  
 12" V.C.R. 92  
 12" V.C.R. 91  
 12" V.C.R. 90  
 12" V.C.R. 89  
 12" V.C.R. 88  
 12" V.C.R. 87  
 12" V.C.R. 86  
 12" V.C.R. 85  
 12" V.C.R. 84  
 12" V.C.R. 83  
 12" V.C.R. 82  
 12" V.C.R. 81  
 12" V.C.R. 80  
 12" V.C.R. 79  
 12" V.C.R. 78  
 12" V.C.R. 77  
 12" V.C.R. 76  
 12" V.C.R. 75  
 12" V.C.R. 74  
 12" V.C.R. 73  
 12" V.C.R. 72  
 12" V.C.R. 71  
 12" V.C.R. 70  
 12" V.C.R. 69  
 12" V.C.R. 68  
 12" V.C.R. 67  
 12" V.C.R. 66  
 12" V.C.R. 65  
 12" V.C.R. 64  
 12" V.C.R. 63  
 12" V.C.R. 62  
 12" V.C.R. 61  
 12" V.C.R. 60  
 12" V.C.R. 59  
 12" V.C.R. 58  
 12" V.C.R. 57  
 12" V.C.R. 56  
 12" V.C.R. 55  
 12" V.C.R. 54  
 12" V.C.R. 53  
 12" V.C.R. 52  
 12" V.C.R. 51  
 12" V.C.R. 50  
 12" V.C.R. 49  
 12" V.C.R. 48  
 12" V.C.R. 47  
 12" V.C.R. 46  
 12" V.C.R. 45  
 12" V.C.R. 44  
 12" V.C.R. 43  
 12" V.C.R. 42  
 12" V.C.R. 41  
 12" V.C.R. 40  
 12" V.C.R. 39  
 12" V.C.R. 38  
 12" V.C.R. 37  
 12" V.C.R. 36  
 12" V.C.R. 35  
 12" V.C.R. 34  
 12" V.C.R. 33  
 12" V.C.R. 32  
 12" V.C.R. 31  
 12" V.C.R. 30  
 12" V.C.R. 29  
 12" V.C.R. 28  
 12" V.C.R. 27  
 12" V.C.R. 26  
 12" V.C.R. 25  
 12" V.C.R. 24  
 12" V.C.R. 23  
 12" V.C.R. 22  
 12" V.C.R. 21  
 12" V.C.R. 20  
 12" V.C.R. 19  
 12" V.C.R. 18  
 12" V.C.R. 17  
 12" V.C.R. 16  
 12" V.C.R. 15  
 12" V.C.R. 14  
 12" V.C.R. 13  
 12" V.C.R. 12  
 12" V.C.R. 11  
 12" V.C.R. 10  
 12" V.C.R. 9  
 12" V.C.R. 8  
 12" V.C.R. 7  
 12" V.C.R. 6  
 12" V.C.R. 5  
 12" V.C.R. 4  
 12" V.C.R. 3  
 12" V.C.R. 2  
 12" V.C.R. 1

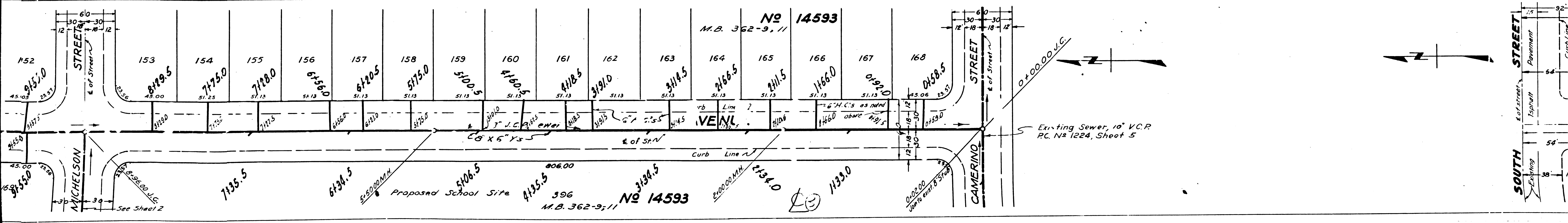
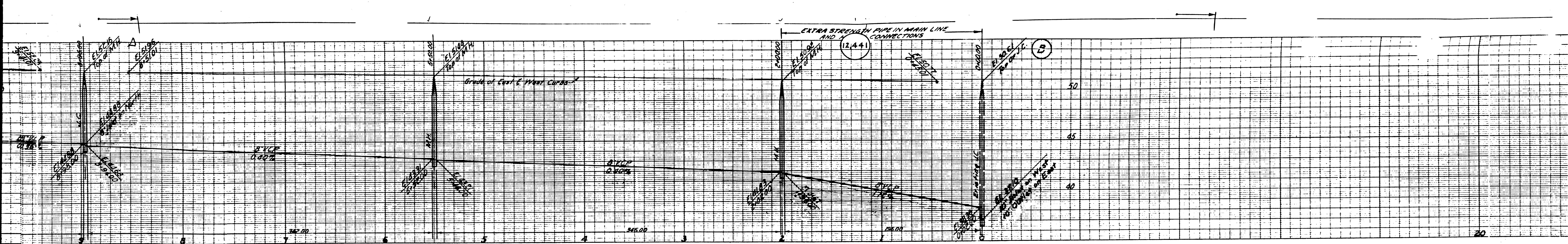
FOR LEGEND  
 SEE PLAN NO. 5-54  
 FOR CONSTRUCTION NOTES SEE SHEET 1

COUNTY OF LOS ANGELES, CALIFORNIA  
 APPROVED: *[Signature]*  
 COUNTY ENGINEER  
 APPROVED: *[Signature]*  
 CIVIL ENGINEER  
 CHECKED: *[Signature]*  
 OFFICE OF COUNTY ENGINEER, REG. C. E. NO. 1522

APR 13 1950

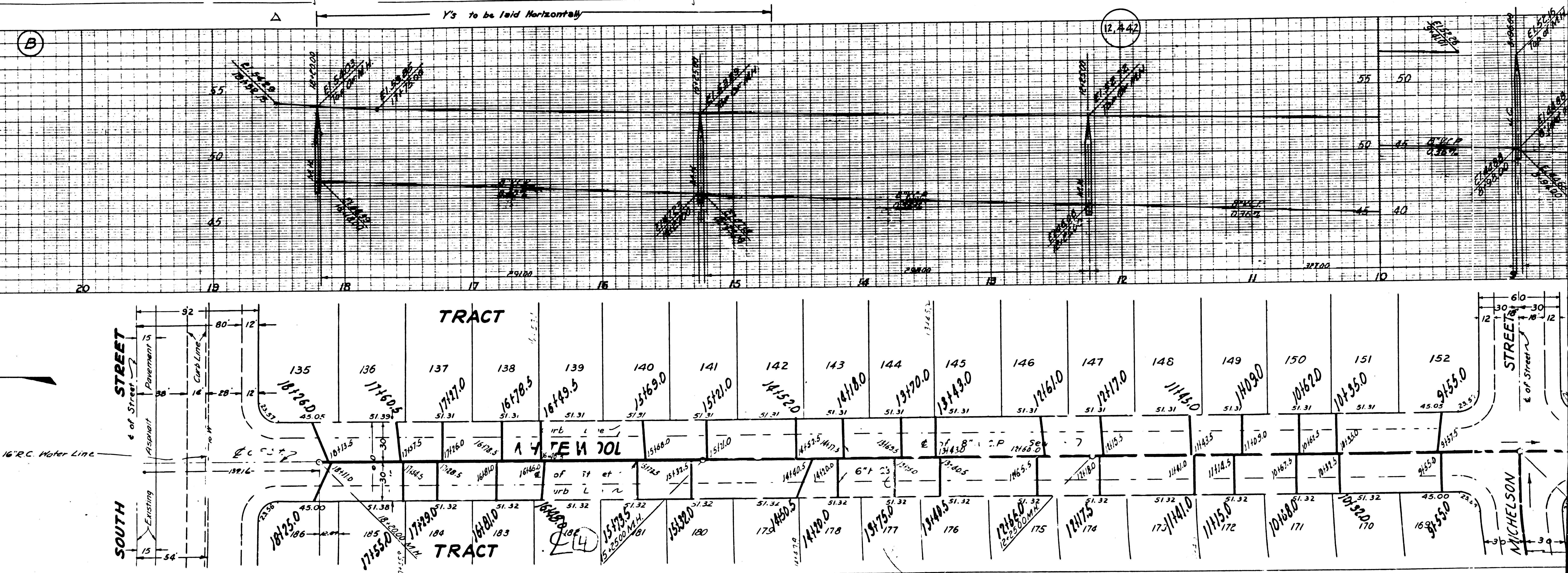
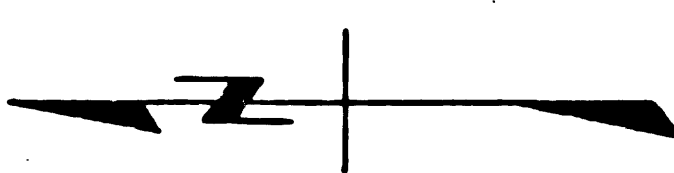
1223-33-3  
 W.S. 33  
 SHEET 3 OF 4





SHEET 3 OF 4 SHEETS  
ONE M. W. 2251 E. W. CR.  
STAMBS & NO. 3 TRACT

END



STREET

SOUTH STREET

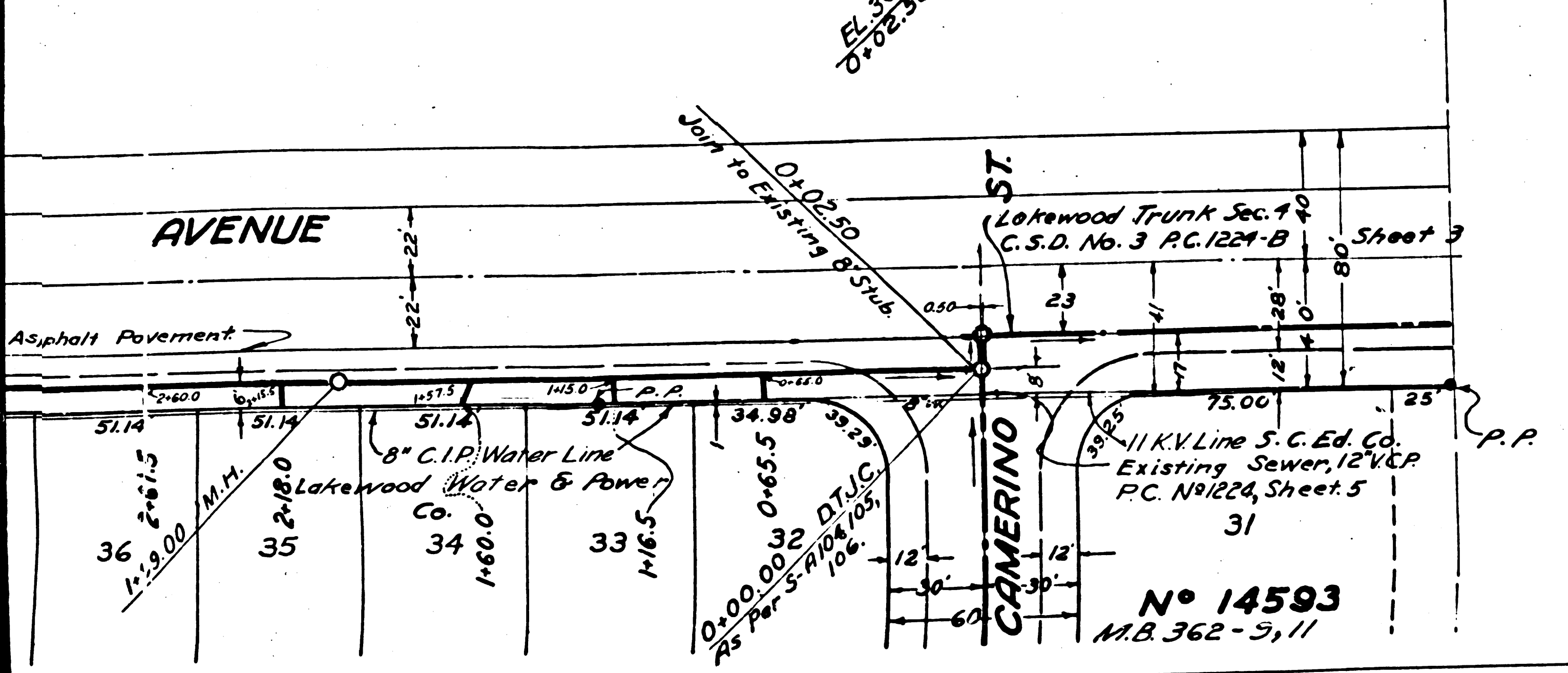
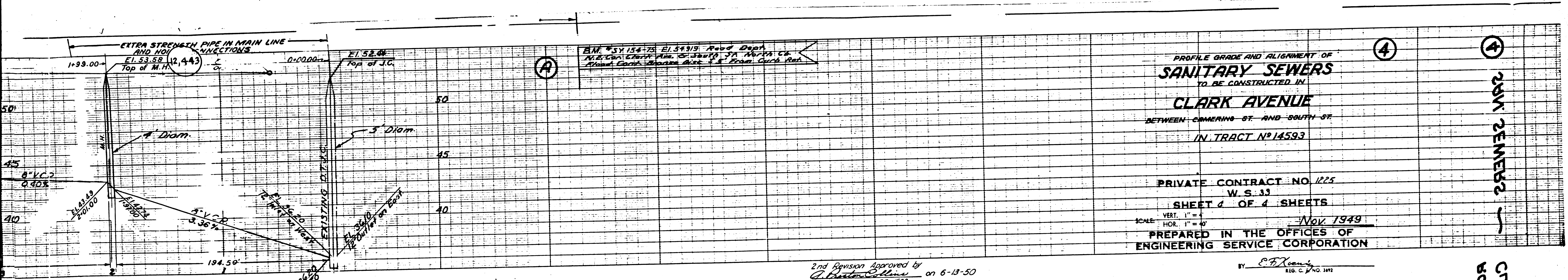
TRACT

TRACT

STREET

STREET

MICHELSON STREET



PROFILE GRADE AND ALIGNMENT OF  
**SANITARY SEWERS**  
 TO BE CONSTRUCTED IN  
**CLARK AVENUE**  
 BETWEEN CAMERINO ST. AND SOUTH ST.  
 IN TRACT N° 14593

PRIVATE CONTRACT NO. 1225  
 W. S. 33  
 SHEET 2 OF 4 SHEETS  
 Nov. 1949  
 PREPARED IN THE OFFICES OF  
 ENGINEERING SERVICE CORPORATION

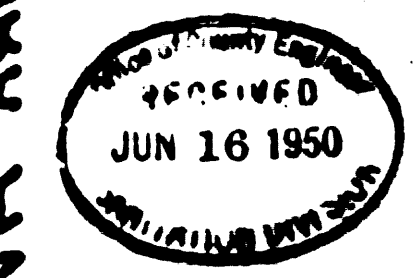
2nd Revision Approved by  
*D. Austin Collins* on 6-13-50  
 RE. 1582

ENGINEERING SERVICE CORPORATION 1127 W. WASHINGTON BLVD. LOS ANGELES 15 CALIF.	
REVISIONS	TRACED BY <i>H.C. Hill</i>
1. Profile grade 2' on Clark Ave from 10' high water table to 14' 2' 0" to 2' 45" M.H. 1510 to 2' 15" revised grade between 0+00 & 2+25.	DESIG'D BY <i>H.C. Hill</i>
2.	CK'D BY <i>M.L. Sullivan</i>
SUB STRUCTURES CK'D	SUBMITTED <i>M. Sullivan</i>
W.O. NO. 5977-2	DATE Nov. 49
DWG. NO. 2-10-3-1	SCALE 1" = 4'

FOR LEGEND  
 SEE PLAN NO. 5-6-64  
 FOR CONSTRUCTION NOTES SEE SHEET 1

COUNTY OF LOS ANGELES, CALIFORNIA  
 APPROVED: *D. Austin Collins*  
 COUNTY ENGINEER  
 APPROVED: *D. Austin Collins*  
 CHIEF ENGINEER OF COUNTY  
 SANITATION DISTRICT NO. 3  
 CHECKED: *D. Austin Collins* 3-23-50  
 OFFICE OF COUNTY ENGINEER, REG. C. E. NO. 7582

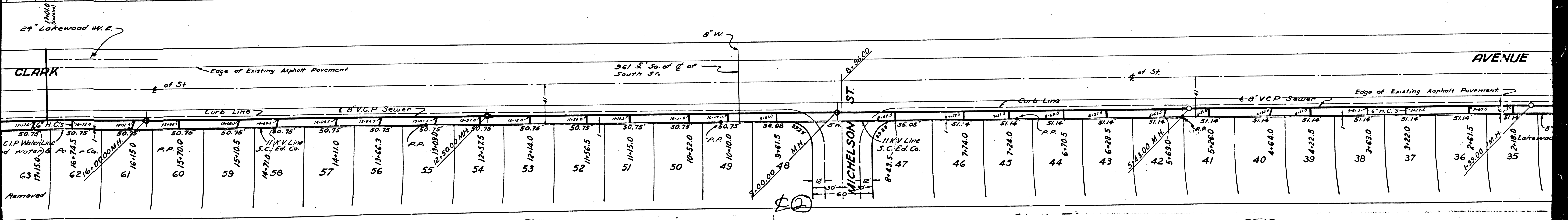
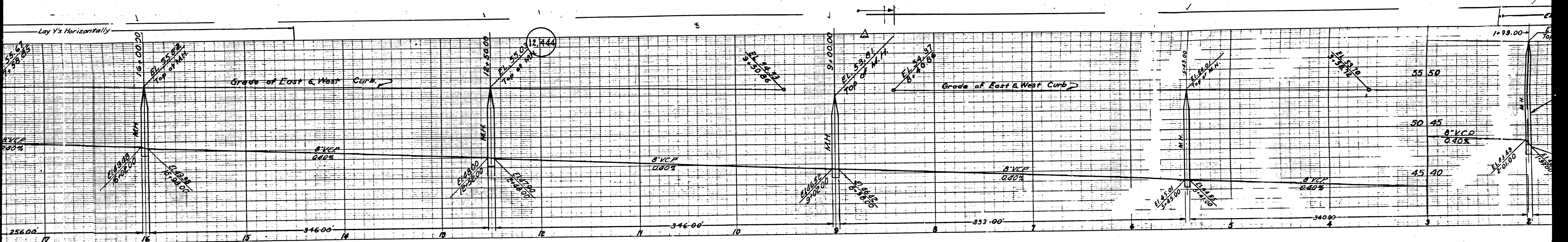
TRACT N° 14593  
 CLARK AVE  
 W. S. 33  
 AC N° 1552 T.W. 310



PC 1552

Artist A-24-51-16-1949

EO



Station	Manhole	Notes
17+00.00	63	Removed
16+74.5	62	6" V.C.P. Sewer
16+15.0	61	16" M.H.
15+70.0	60	R.P.
15+10.0	59	11" V.C.P. Sewer
14+71.0	58	11" V.C.P. Sewer
14+11.0	57	14" M.H.
13+66.3	56	14" M.H.
12+10.0	55	12" V.C.P. Sewer
12+57.5	54	12" M.H.
12+14.0	53	12" M.H.
11+56.5	52	11" M.H.
11+15.0	51	11" M.H.
10+32.0	50	10" M.H.
10+10.0	49	R.P.
9+61.5	48	8" V.C.P. Sewer
8+42.5	47	11" V.C.P. Sewer
7+74.0	46	7" M.H.
7+24.0	45	7" M.H.
6+70.5	44	R.P.
6+28.5	43	6" M.H.
5+13.0	42	5" V.C.P. Sewer
5+69.0	41	5" M.H.
5+26.0	40	R.P.
4+64.0	39	4" M.H.
3+22.5	38	3" M.H.
3+63.0	37	3" M.H.
2+61.5	36	2" M.H.
1+93.0	35	1" M.H.

SHEET 4 OF SHEETS  
 ONE IN. = 25 FT. V. & H.  
 TRACT  
 18283  
 END

