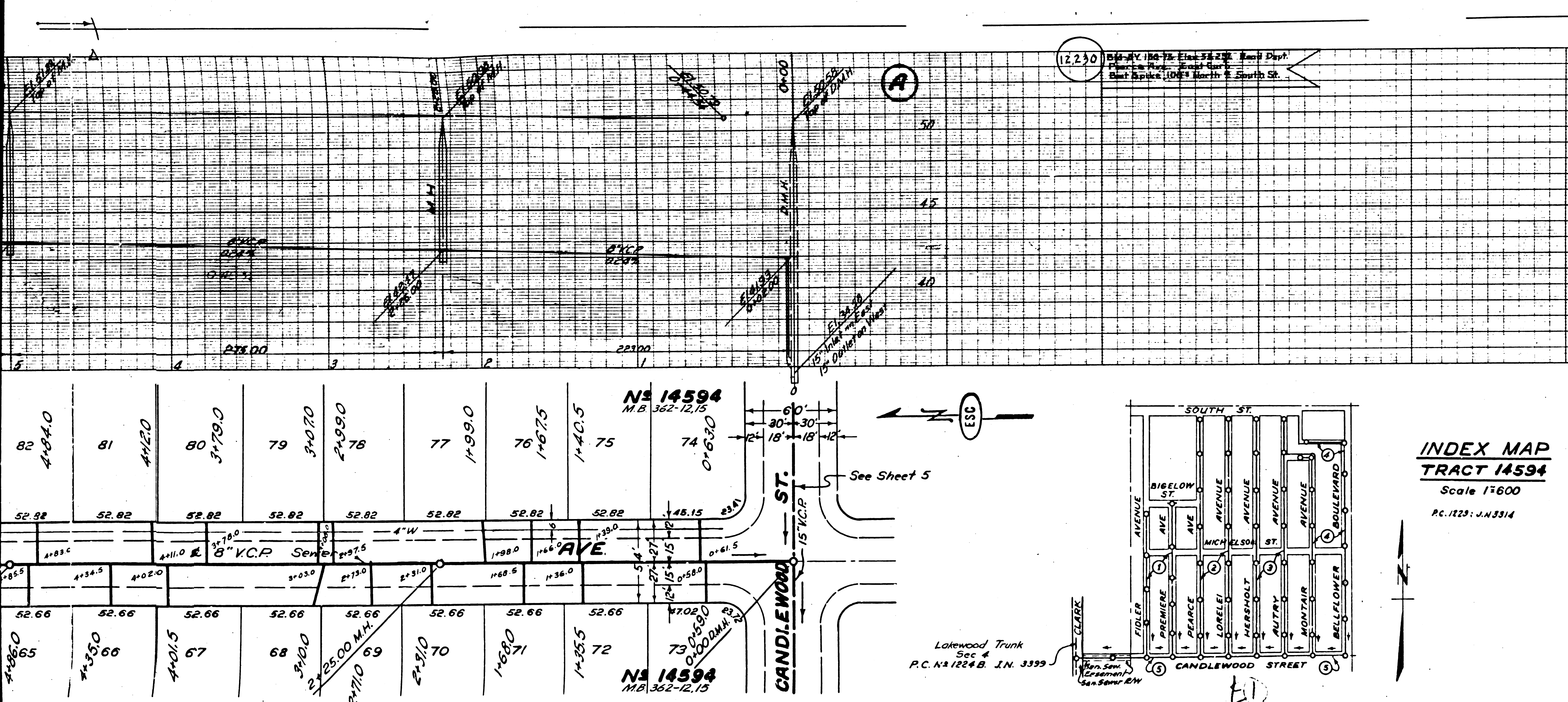


12,230 124-AV-186-75 Elev. 58.280 each Day  
Premiere Ave. East Quarter  
East Spine, 1067 North E South St.



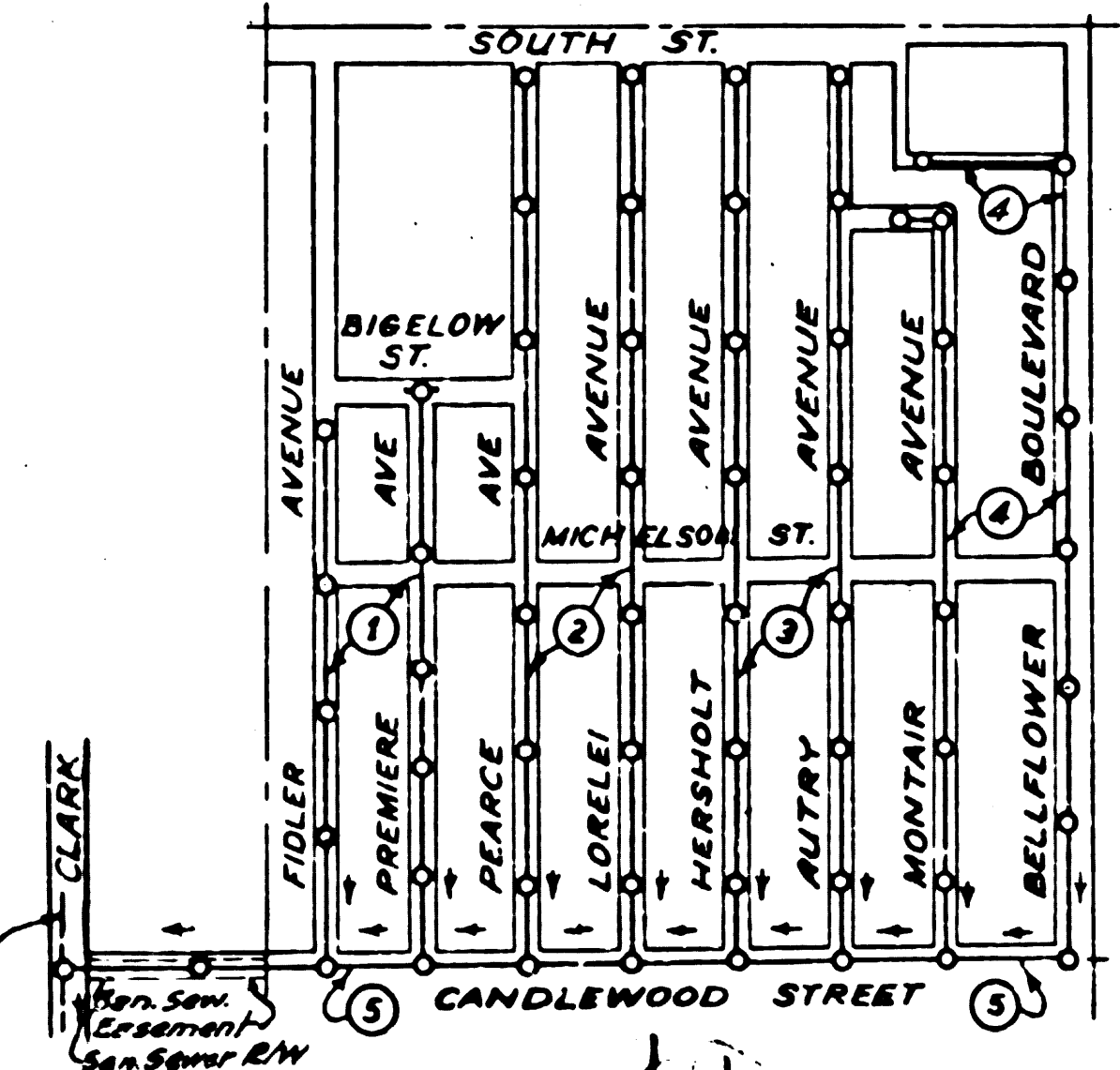
- NOTE: NO REPRESENTATIVE OF THE COUNTY ENGINEER WILL SURVEY OR LAY OUT ANY PORTION OF THE WORK.
- THE OWNER OR HIS AUTHORIZED REPRESENTATIVE SHALL FURNISH THE COUNTY ENGINEER WITH GRADE SHEETS AND STATIONS FOR ALL HOUSE CONNECTIONS AND BRANCHES AND SHALL PROVIDE STAKES FOR THEM AT THEIR PROPER LOCATIONS WITH STATIONING PLAINLY MARKED. ANY CHANGE OF LOCATION SHALL BE REQUESTED IN WRITING BY THE OWNER OR HIS REPRESENTATIVE.
- NO REVISIONS SHALL BE MADE IN THESE PLANS WITHOUT APPROVAL OF THE COUNTY ENGINEER.
1. USE STANDARD MANHOLE FRAMES AND COVERS: 5-117.
  2. USE STANDARD STRENGTH PIPE EXCEPT AS NOTED.
  3. USE CEMENT MORTAR FOR ALL VERIFIED LAY PIPE JOINTS.
  4. RESURFACE TRENCH WITHIN PAVED AREA TO MEET L.A. COUNTY ROAD DEPT. REQUIREMENTS IN ACCORDANCE WITH THE PERMIT.
  5. ENCASE FOUR FEET OF SEWER AT POINTS OF INTERFERENCE WITH POLLS: 5-119.
  6. HOUSE CONNECTIONS TO BE CONSTRUCTED WITH INVERT AT PROPERTY LINE 4 FEET BELOW CURB GRADE.
  7. ALL STRUCTURES SHALL BE BRICK SEWER STRUCTURES: L.A. 140-1.
  8. PROVIDE STAKES ON THE PROPERTY LINES OR PROPERTY LINES REDUCED AT RIGHT ANGLES TO THE SEWER LINE AT THE CENTER LINE OF EACH MANHOLE.

PROFILE GRADE AND ALIGNMENT OF  
**SANITARY SEWERS**  
TO BE CONSTRUCTED BY  
**PREMIERE AVE**  
BETWEEN CANDLEWOOD ST AND 8 BELOW ST  
**FIDLER AVE**  
BETWEEN CANDLEWOOD ST AND 8 BELOW ST  
IN TRACT N<sup>o</sup> 14594

PRIVATE CONTRACT NO. 1224  
W.S. 33  
**SHEET 1 OF 5 SHEETS**  
SCALE: HORIZ. 1" = 40'  
VERT. 1" = 4'

APRIL 1950  
PREPARED IN THE OFFICES OF  
**ENGINEERING SERVICE CORPORATION**  
BY **P. D. Keenan**  
116 C. E. No. 141

**INDEX MAP**  
**TRACT 14594**  
Scale 1"=600  
P.C. 1225: J.N.3314



**ENGINEERING SERVICE CORPORATION**  
1127 W. WASHINGTON BLVD.  
LOS ANGELES 15, CALIF.

REVISIONS					
Sewer Grade lowered to 6.1' over Jan 50	TRACED BY: N.C.				
Sewer Grade raised to 6.55' over Jan 50	DESIG'D BY: J.K.				
Sewer Grade changed to 6.24% as per L.A. County Recommendation	CK'D BY: J.H.				
	SUBMITTED: M. J. Miller				
SUB STRUCTURES CK'D					
W.O. NO.	DWG. NO.	DATE	SCALE	L.B.	F.B.
5977-3	3-9-34	6-12-50	AS SHOWN	49	

NOTE: GRADES TO WHICH THIS IMPROVEMENT IS TO BE CONSTRUCTED ARE SHOWN ON GRADE POINTS FOR TOP OF CURB, CENTER LINE OF STREETS, OR CENTER LINE OF CIRCLES ON PROFILES. AT ALL POINTS BETWEEN DESIGNATED POINTS THE GRADE SHALL BE AS TO CONFORM TO A STRAIGHT LINE DRAWN BETWEEN SAID DESIGNATED POINTS. ELEVATIONS ARE IN FEET ABOVE U. S. G. S. DATUM OR MEAN SEA LEVEL.

THIS DRAWING AND THE DATA HEREON ARE HEREBY MADE A PART OF THE SPECIFICATIONS TO BE CONSTRUCTED ACCORDING TO SPECIFICATIONS ON FILE IN THE OFFICE OF THE COUNTY ENGINEER AND SHALL BE PROSECUTED ONLY IN THE PRESENCE OF THE COUNTY ENGINEER.

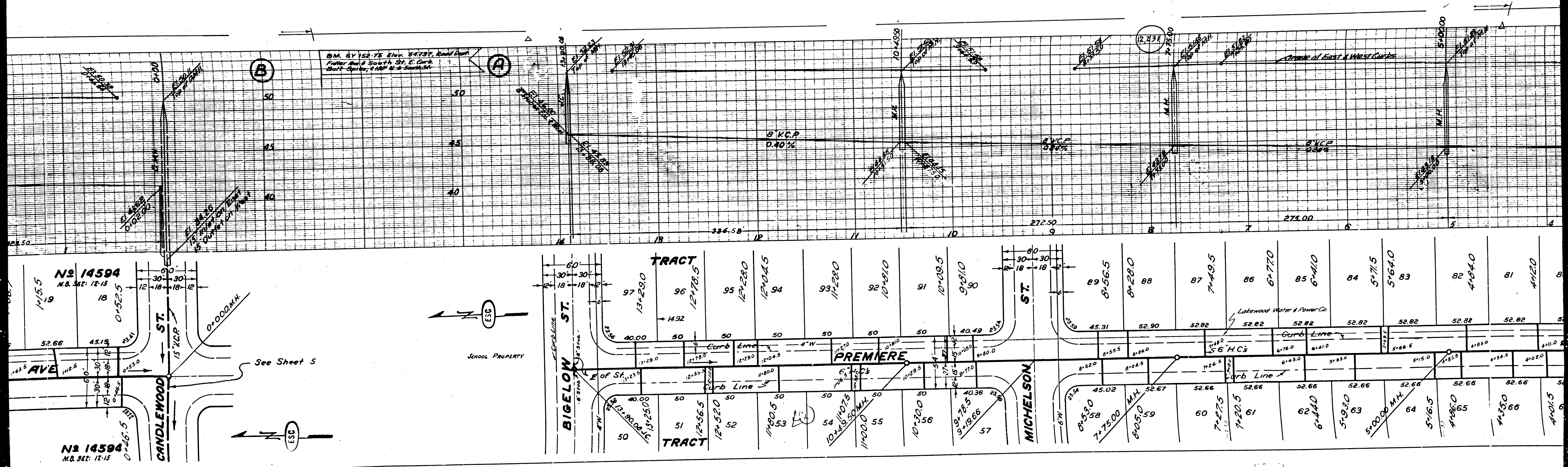
BEFORE WORK CAN BE STARTED THE CONTRACTOR MUST OBTAIN A PERMIT TO EXCAVATE FROM THE L.A. COUNTY ROAD DEPT. 211 50 MAIN ST. AND MAKE A DEPOSIT OF \$1000 WITH THE COUNTY ENGINEERING BUILDING SUFFICIENT TO COVER THE COST OF INSPECTION AND RECONSTRUCTION.

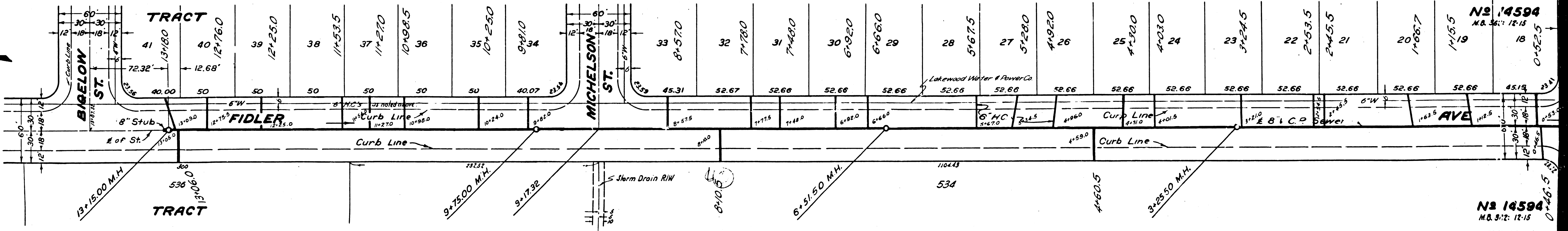
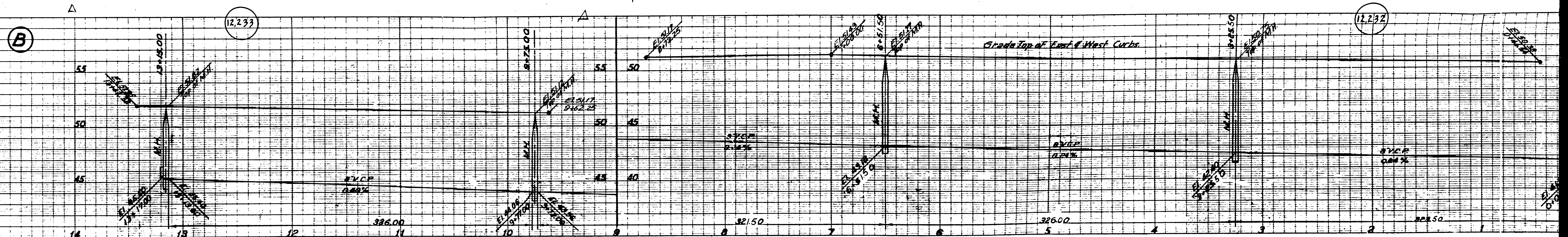
APPROVAL OF THIS PLAN BY THE COUNTY OF LOS ANGELES DOES NOT CONSTITUTE AS TO THE ACCURACY OF OR THE EXISTENCE OR NON-EXISTENCE OF ANY UNDERGROUND STRUCTURE WITHIN THE LIMITS OF THIS PROJECT THIS NOTE APPLIES TO ALL SHEETS OF THIS PROJECT.

COUNTY OF LOS ANGELES, CALIFORNIA

APPROVED: **C. O. Keenan**  
ASSST. CHIEF ENGINEER, SANITATION

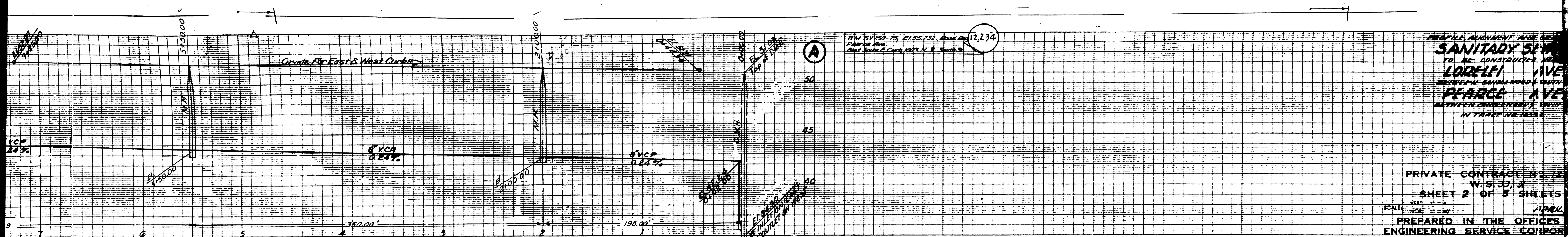
CHECKED: **A. P. Keenan**  
CHIEF OF COUNTY





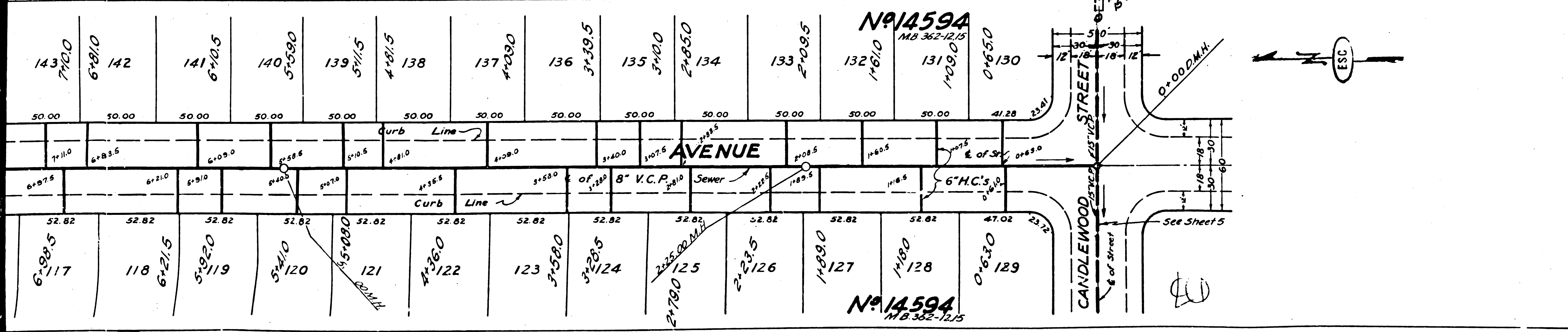
No. 14594  
M.B. 3:12: 12-15

No. 14594  
M.B. 3:12: 12-15



SANITARY SEWER  
 LORELEI AVE  
 PEARCE AVE  
 BETWEEN CANDLEWOOD ST. SOUTH  
 IN TRACT NO. 14594

PRIVATE CONTRACT NO. 12  
 W.S. 33, 3  
 SHEET 2 OF 3 SHEETS  
 SCALE: HORIZ. 1" = 40'  
 VERT. 1" = 4'  
 PREPARED IN THE OFFICES  
 ENGINEERING SERVICE CORPORATION



ENGINEERING SERVICE CORPORATION  
1127 W. WASHINGTON BLVD.  
LOS ANGELES 15, CALIF.

REVISIONS		TRACED BY C. R. R.	
Sewer grade lowered for 3' cover	4-3-50	DES'G'D BY	M.H.
Sewer grade raised to 3' cover	4-12-50	CK'D BY	M.H.
Sewer grade changed to 0.24%	4-17-50	SUBMITTED	M.H.
Design changed to serve Canal			

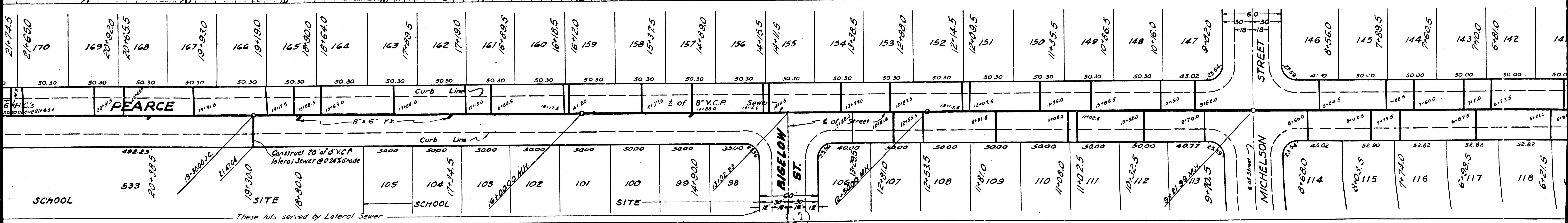
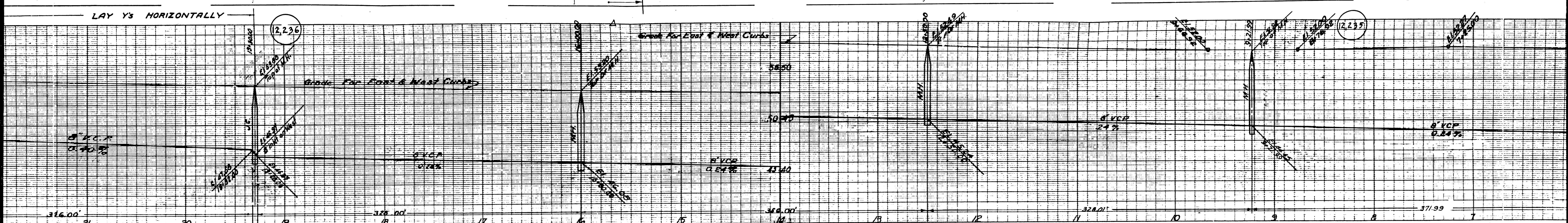
SUB STRUCTURES CK'D

W.D. NO.	DWG. NO.	DATE	SCALE	L.B.	L.F.B.
5377-3	3-10-3-1	4-12-50	VERT. 1" = 4' HORIZ. 1" = 40'		

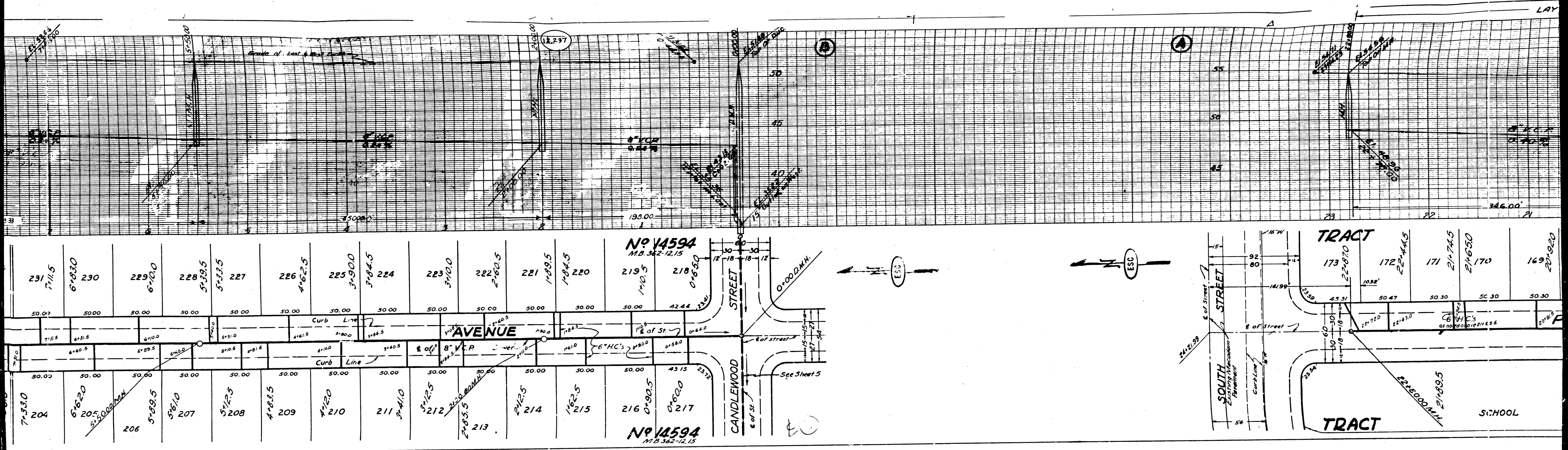
FOR LEGEND  
 SEE PLAN NO. S-44  
 FOR CONSTRUCTION NOTES SEE SHEET 1  
 COUNTY OF LOS ANGELES, CALIFORNIA  
 APPROVED: *C. R. R.*  
 C. R. R. ENGINEER  
 APPROVED: *C. R. R.*  
 ASST. CHIEF ENGINEER OF COUNTY  
 SANITATION DISTRICT NO. 3  
 CHECKED: *A. Anton*  
 OFFICE OF COUNTY ENGINEER REG. C. E.

4-12-50

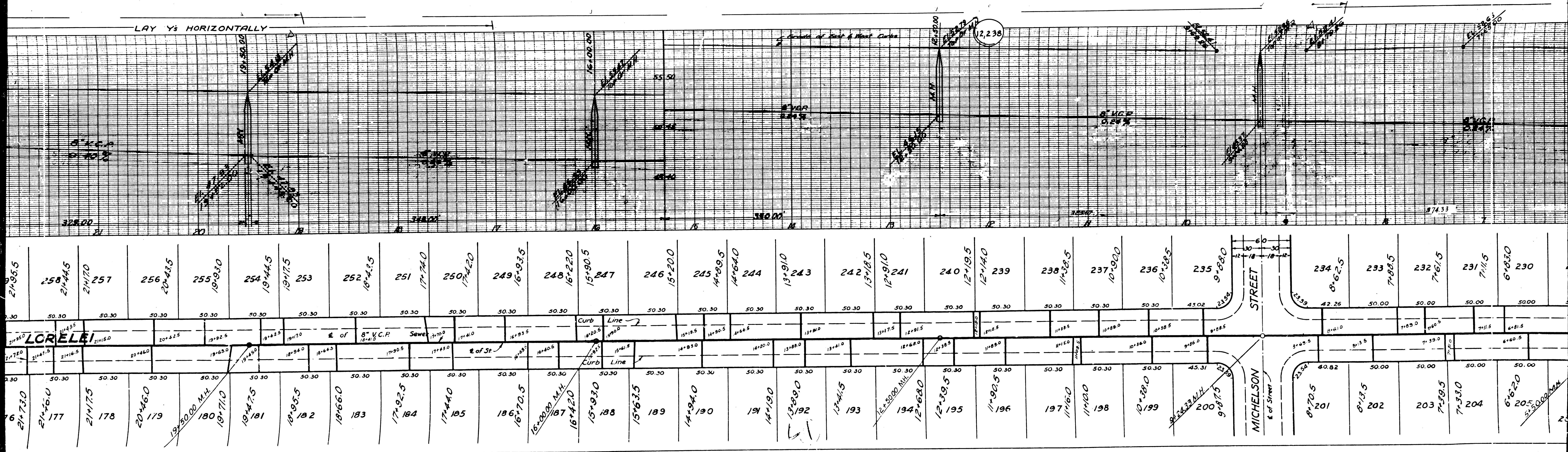
LAY Y'S HORIZONTALLY



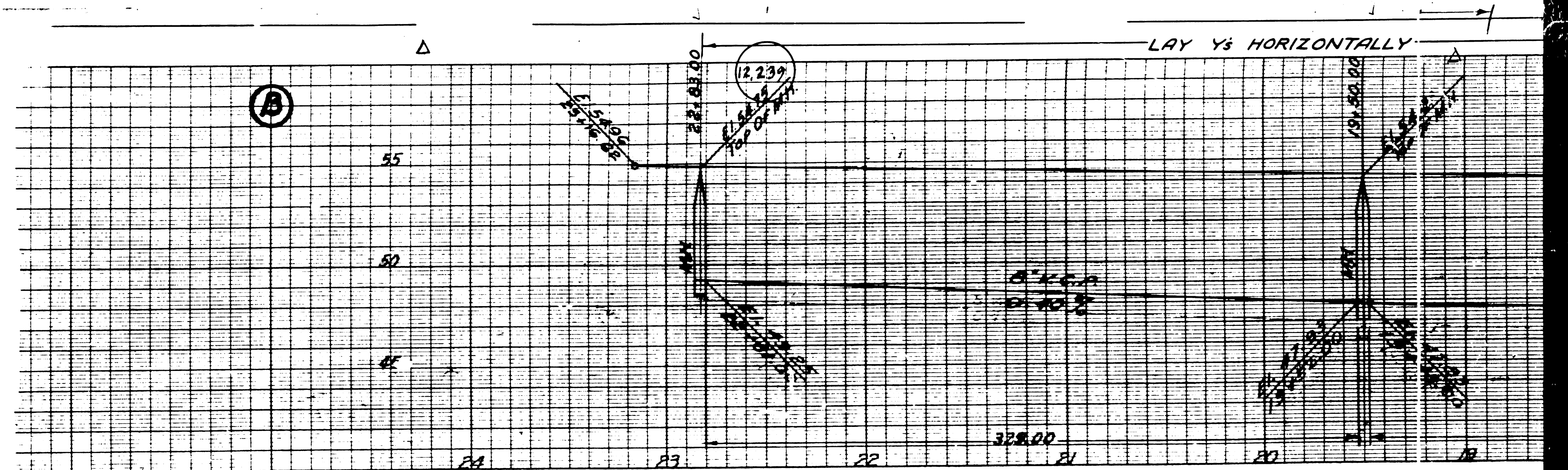
These lots served by Lateral Sewer



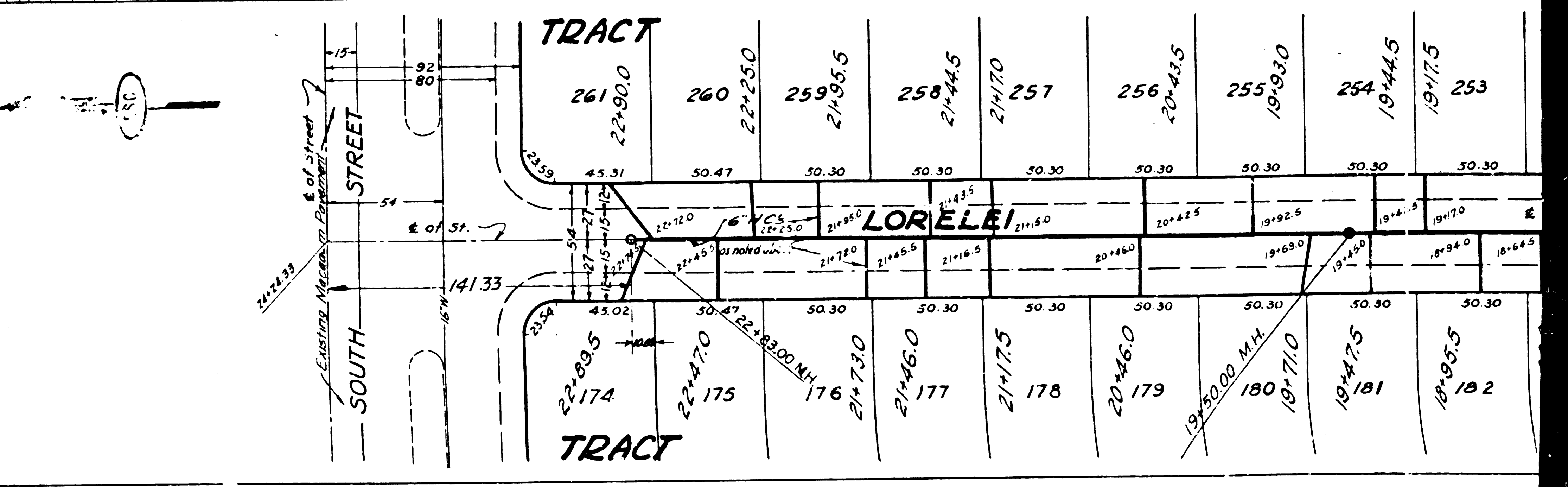
LAY 1/2 HORIZONTALLY



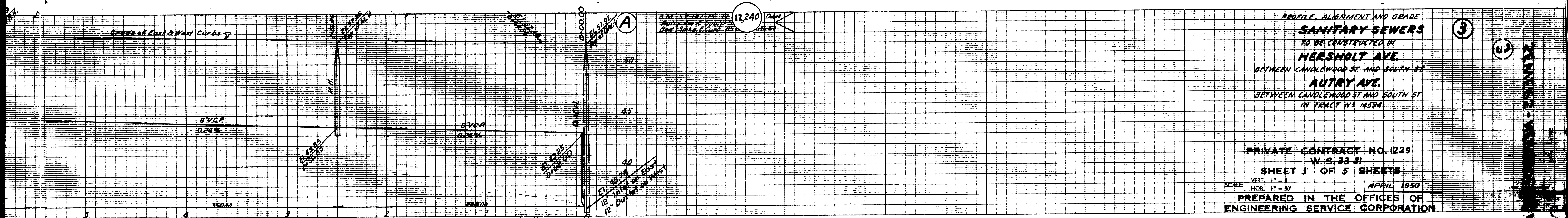
21+95.5	258 21+44.5	21+70	257	256 20+43.5	255 19+93.0	254 19+44.5	253 19+7.5	252 18+44.5	251 17+74.0	250 17+42.0	249 16+93.5	248 16+22.0	247 15+90.5	246 15+20.0	245 14+89.5	244 14+64.0	243 13+91.0	242 13+88.5	241 12+91.0	240 12+19.5	239 12+14.0	238 11+38.5	237 10+90.0	236 10+38.5	235 9+68.0	234 8+62.5	233 7+88.5	232 7+61.5	231 7+11.5	230 6+83.0	
21+73.0	21+46.0	21+75	178	20+46.0	19+50.00 M.H.	19+71.0	19+44.75	18+95.5	18+66.0	17+92.5	17+44.0	186 16+70.5	187 16+42.0	188 15+93.0	189 15+63.5	190 14+94.0	191 14+19.0	192 13+89.0	193 13+41.5	194 12+68.0	195 12+39.5	196 11+90.5	197 11+60.0	198 11+10.0	199 10+58.0	200 9+75.0	201 8+70.5	202 8+13.5	203 7+59.5	204 7+33.0	205 6+52.0



Pic. 10-1  
 Zone E of 2nd 1/2  
 Range of Forested Area  
 Twp. 33N  
 R. 12E  
 N. 1/2 Sec. 18

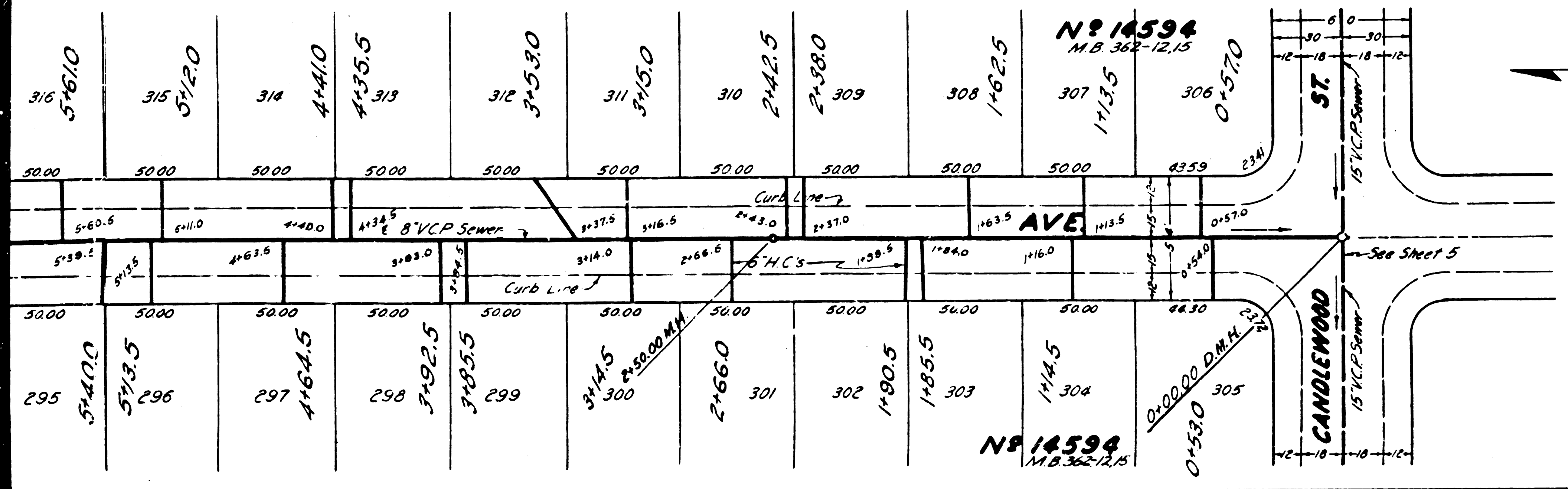






PROFILE, ALIGNMENT AND GRADE  
**SANITARY SEWERS**  
 TO BE CONSTRUCTED IN  
**HERSHOLT AVE**  
 BETWEEN CANDLEWOOD ST AND SOUTH ST  
**AUTRY AVE.**  
 BETWEEN CANDLEWOOD ST AND SOUTH ST  
 IN TRACT N 14594

PRIVATE CONTRACT NO. 1229  
 W.S. 33 31  
 SHEET 3 OF 5 SHEETS  
 SCALE: VERT. 1" = 4'  
 HOR. 1" = 40'  
 APRIL 1950  
 PREPARED IN THE OFFICES OF  
**ENGINEERING SERVICE CORPORATION**



ENGINEERING SERVICE CORPORATION			
1127 W. WASHINGTON BLVD. LOS ANGELES 15, CALIF.			
REVISIONS			
Sewer Grade Lowered for 65 Cover	JAN 1950	TRACED BY	CME
Sewer Grade Raised to 55 Cover	4-3-50	DES'G'D BY	W.S.-5
Sewer Grade Changed to 24%	4-12-50	CK'D BY	JMS
As per L.A. County recommendation		SUBMITTED	M. D. [Signature]
SUB STRUCTURES CK'D			
W. O. NO.	DRG. NO.	DATE	SCALE
5077-3	3-11-3-1	4-12-50	1" = 40'
			L.S. P.B.
			49

FOR LEGEND  
 SEE PLAN NO. 5-2-44  
 FOR CONSTRUCTION NOTES SEE SHEET 1

COUNTY OF LOS ANGELES, CALIFORNIA

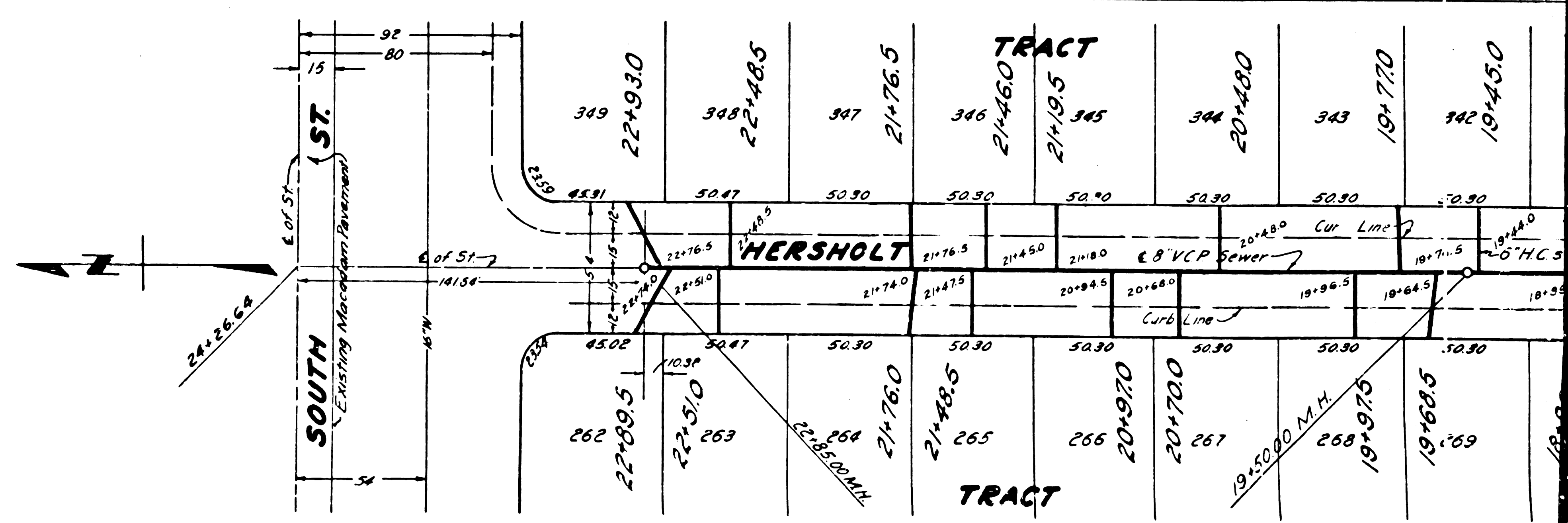
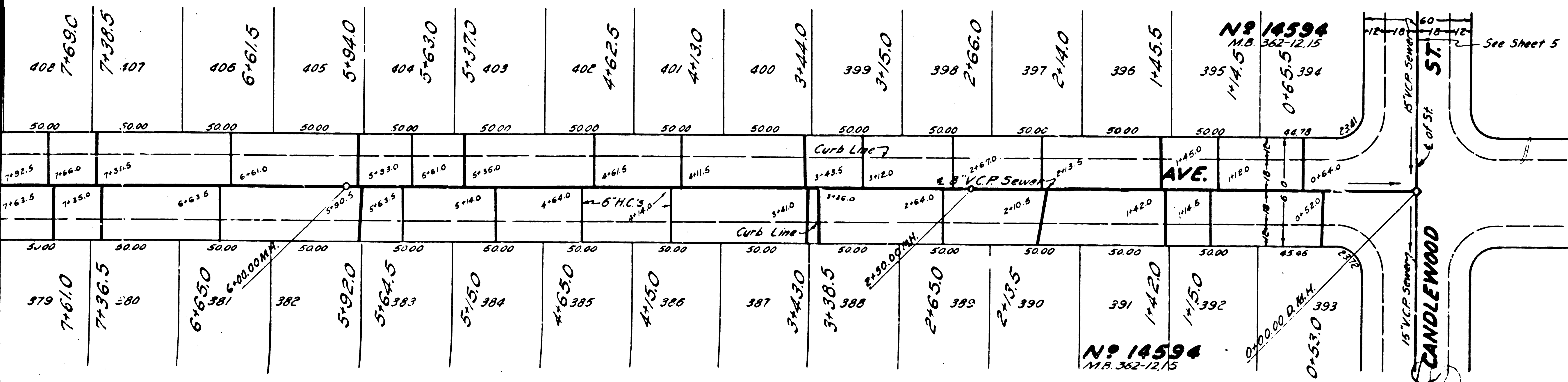
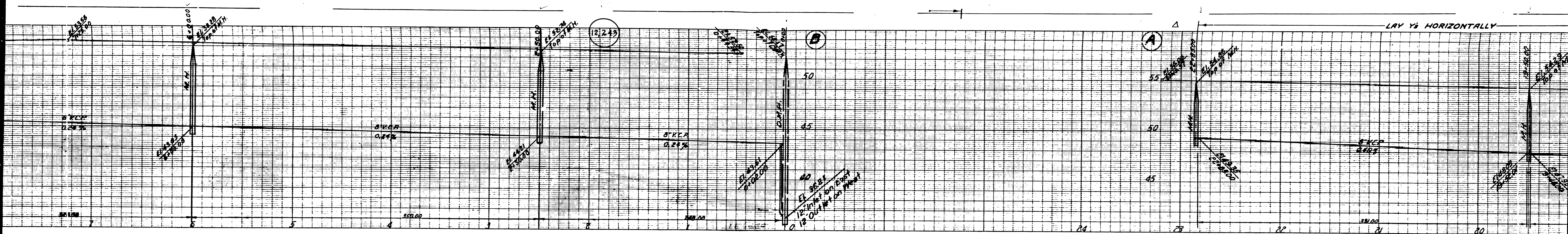
APPROVED: [Signature]  
 C. R. [Signature]  
 ASST. CHIEF ENGINEER, COUNTY  
 SANITATION DISTRICT NO. 3

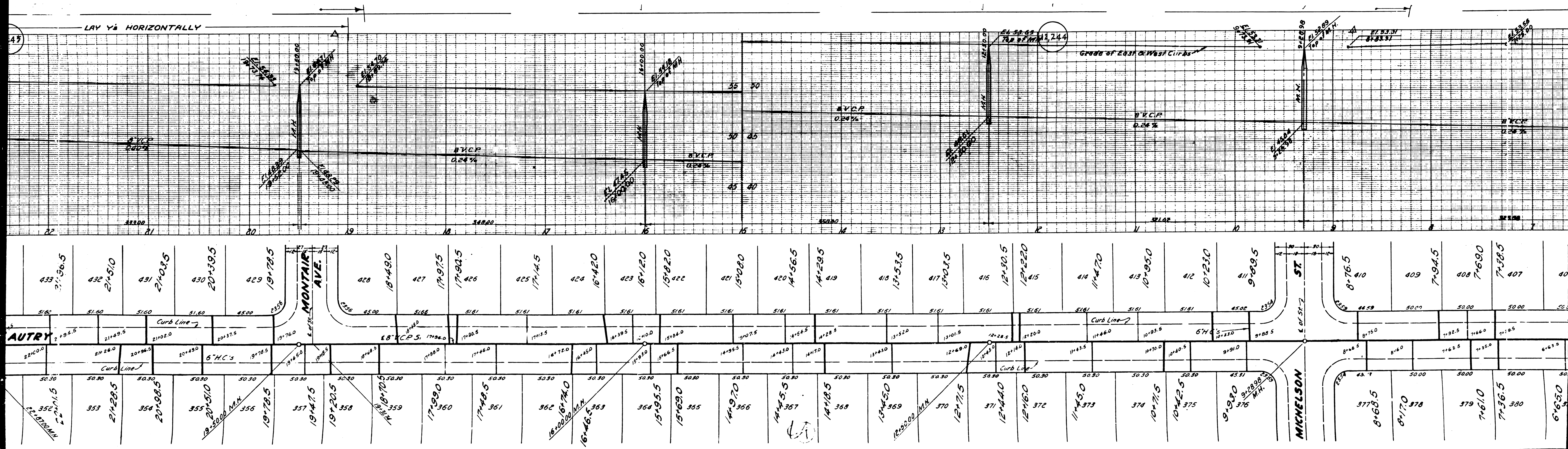
CHECKED: [Signature]  
 CHIEF OF COUNTY ENGINEER, REG. C. E. NO. 1502

SHEET 3 OF 5 SHEETS  
 HERSHOLT AVE  
 CANDLEWOOD ST  
 SOUTH ST  
 AUTRY AVE

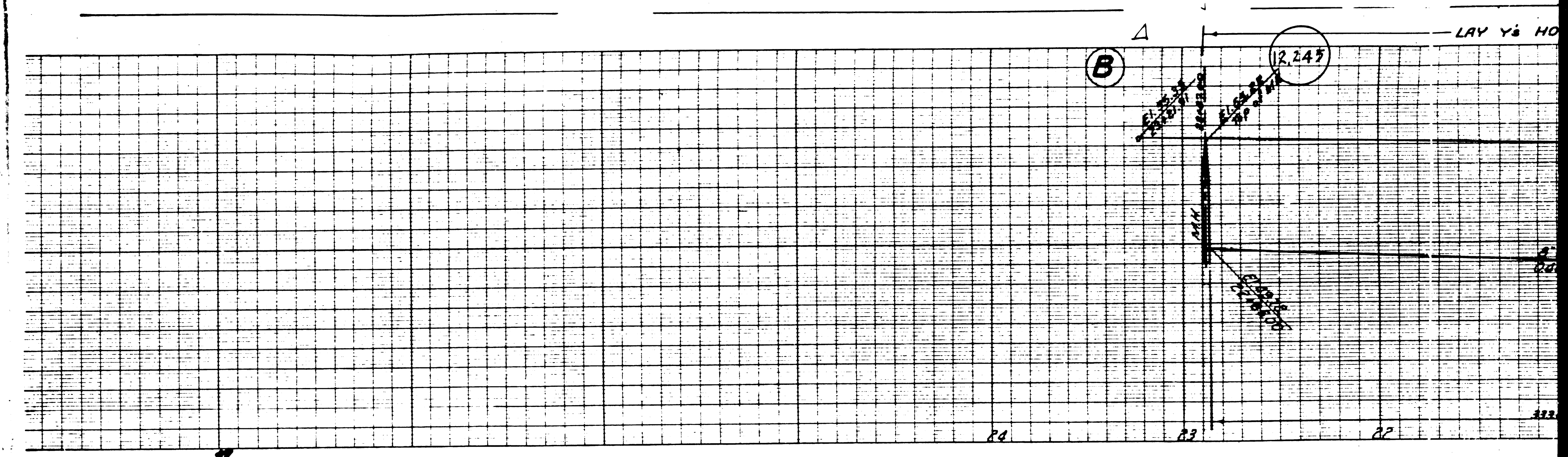
7/2/50



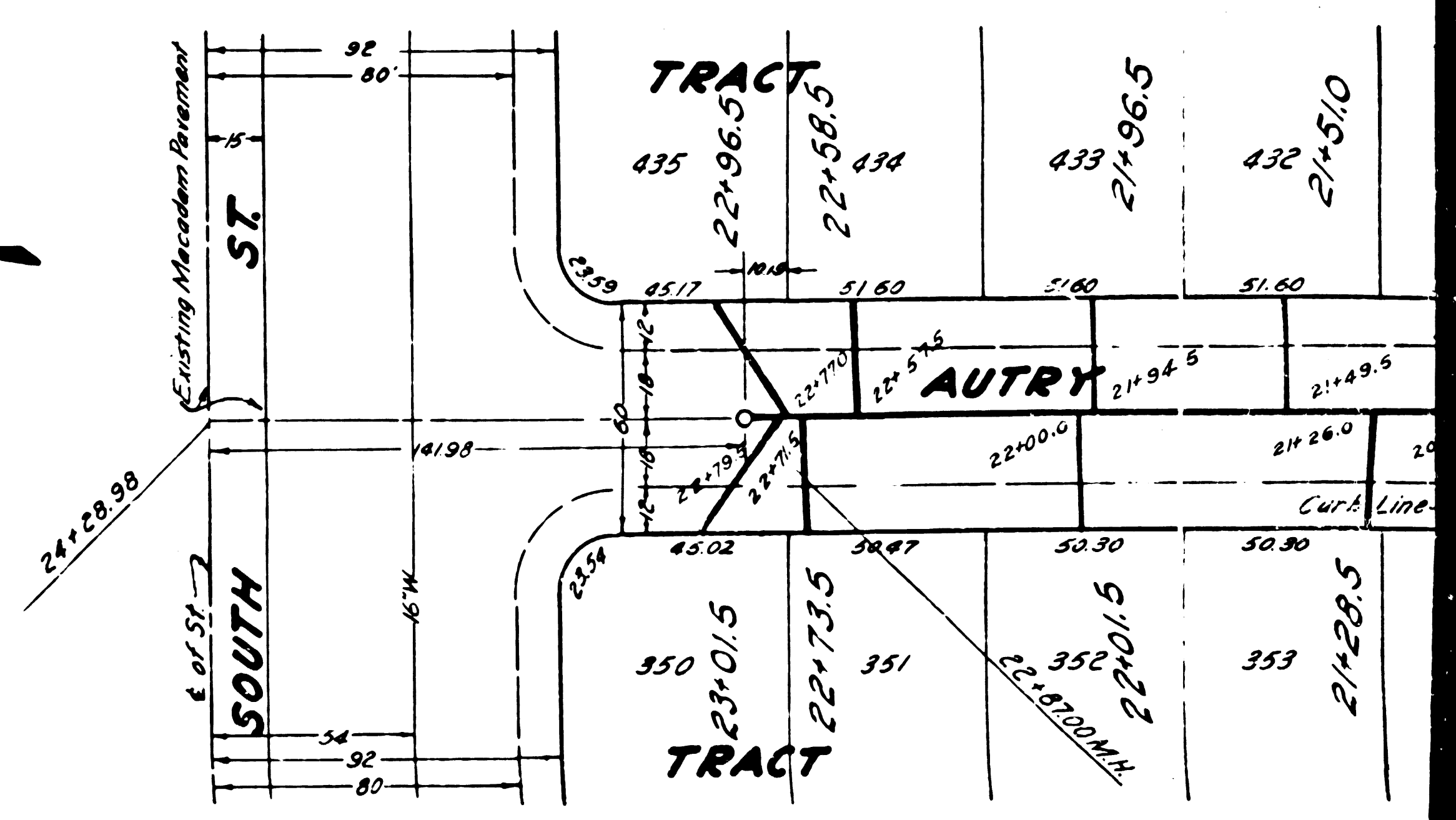
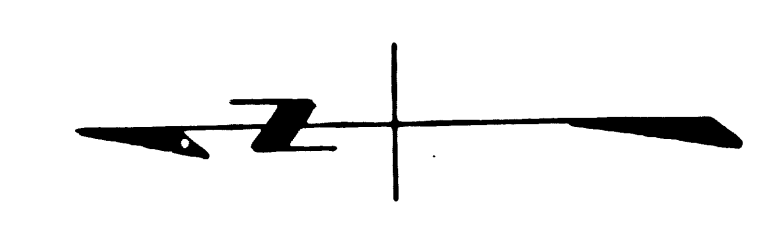




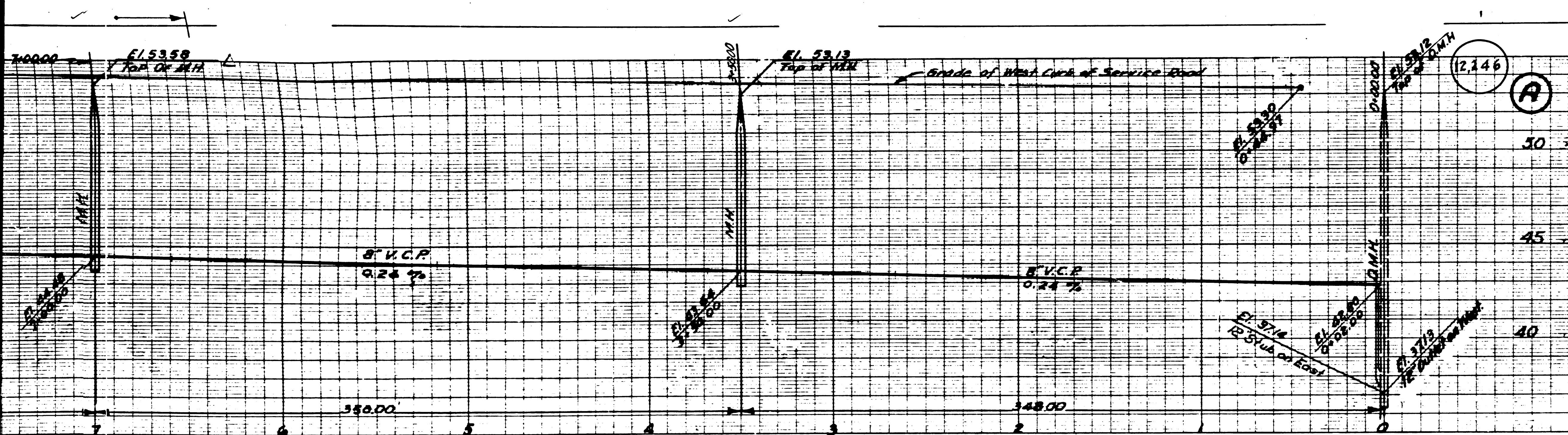
433 21196.5	432 21451.0	431 21403.5	430 20159.5	429 19178.5	428 18149.0	427 17197.5	426 17192.5	425 17141.5	424 16142.0	423 16112.0	422 15182.0	421 15108.0	420 14156.5	419 14129.5	418 13153.5	417 13101.5	416 12190.5	415 12122.0	414 11144.70	413 10195.0	412 10123.0	411 9199.5	410 8176.5	409 7194.5	408 7169.0	407 7138.5	406 6150.0		
350 21111.5	353 21428.5	354 20198.5	355 20151.0	356 19178.5	357 19147.5	358 19120.5	359 18187.0	360 17199.0	361 17148.5	362 16174.0	363 15195.5	364 15169.0	365 14197.0	366 14155.5	367 14118.5	368 13150.0	369 12160.0	370 12117.5	371 11144.0	372 10160.0	373 11145.0	374 10171.5	375 10142.5	376 9193.0	377 8168.5	378 8117.0	379 7161.0	380 7136.5	381 6155.0



NO. 201 TRACT 0851.09  
 07348.2 70 & 7348.2

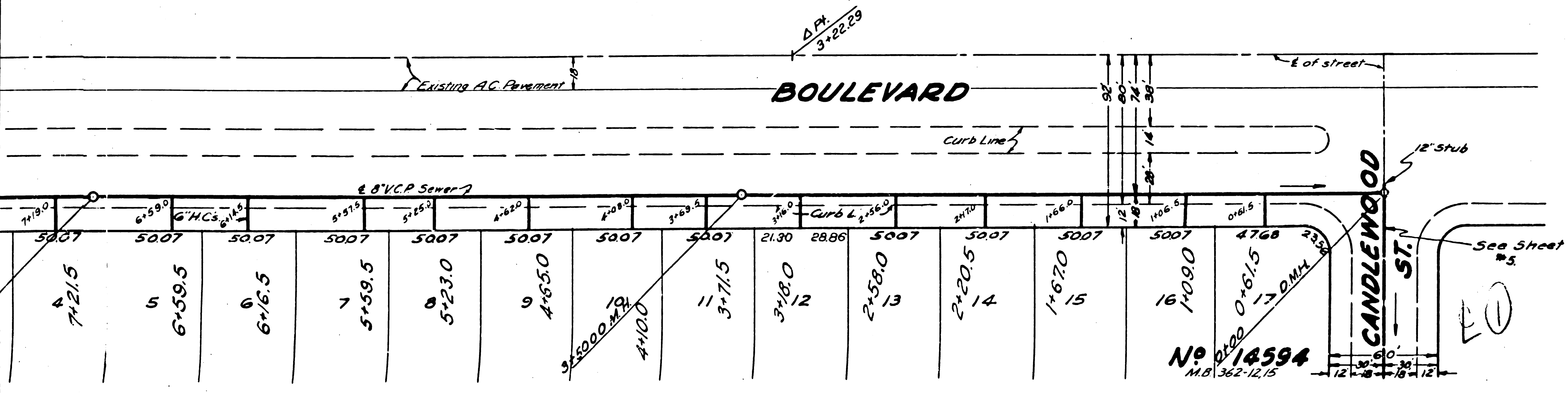


Handwritten notes and a circled '2' are present on the left side of the page.



B.M. 5.8 729.58 Elev. 5157.99, Bench Dept.  
 South St. & Bellflower Blvd.  
 C.S. Adm. near intersection

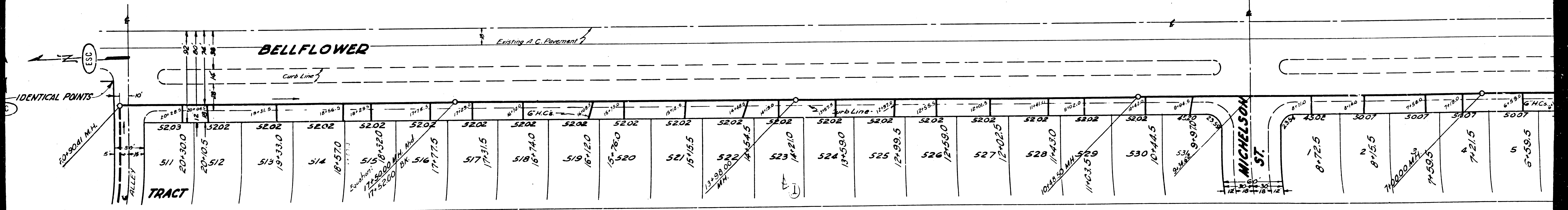
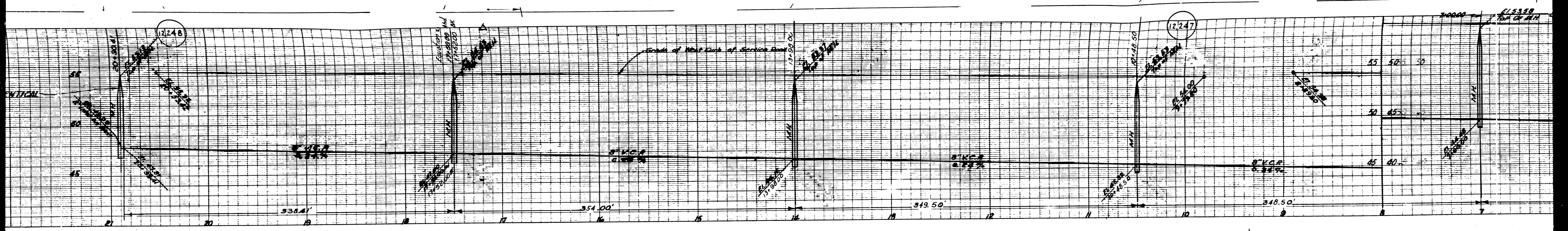
PROFILE, GRADE AND ALIGNMENT OF  
**SANITARY SEWERS**  
 TO BE CONSTRUCTED IN  
**BELLFLOWER BLVD.**  
 BETWEEN CANDLEWOOD ST. AND FIRST ALLEY  
 SOUTH OF SOUTH ST.  
**MONTAIR AVE.**  
 BETWEEN CANDLEWOOD ST. AND ALLEY AVE.  
**FIRST ALLEY SOUTH OF SOUTH ST.**  
 BETWEEN BELLFLOWER BLVD. & THE ALLEY WEST  
 OF BELLFLOWER BLVD.  
 IN TRACT N-14594  
 PRIVATE CONTRACT NO. 1229  
 W.S. 33, 31.  
 SHEET 4 OF 5 SHEETS  
 SCALE: VERT. 1" = 4'  
 HOR. 1" = 40'  
 APRIL, 1950  
 PREPARED IN THE OFFICES OF  
 ENGINEERING SERVICE CORPORATION

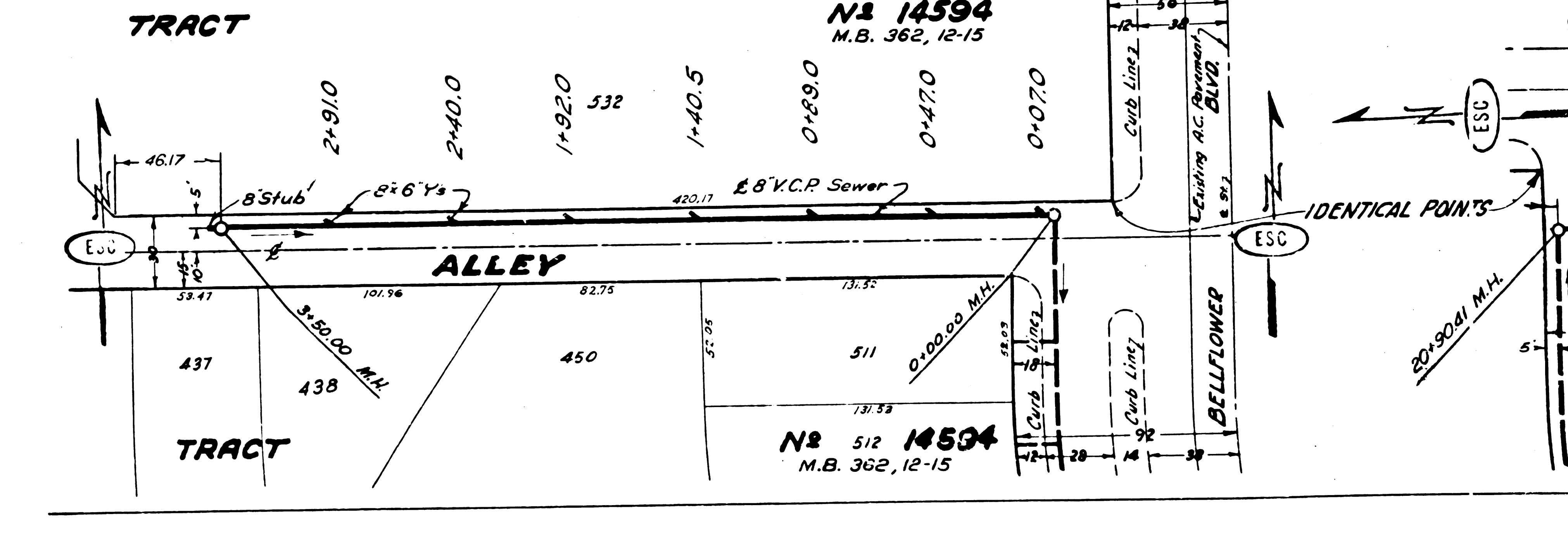
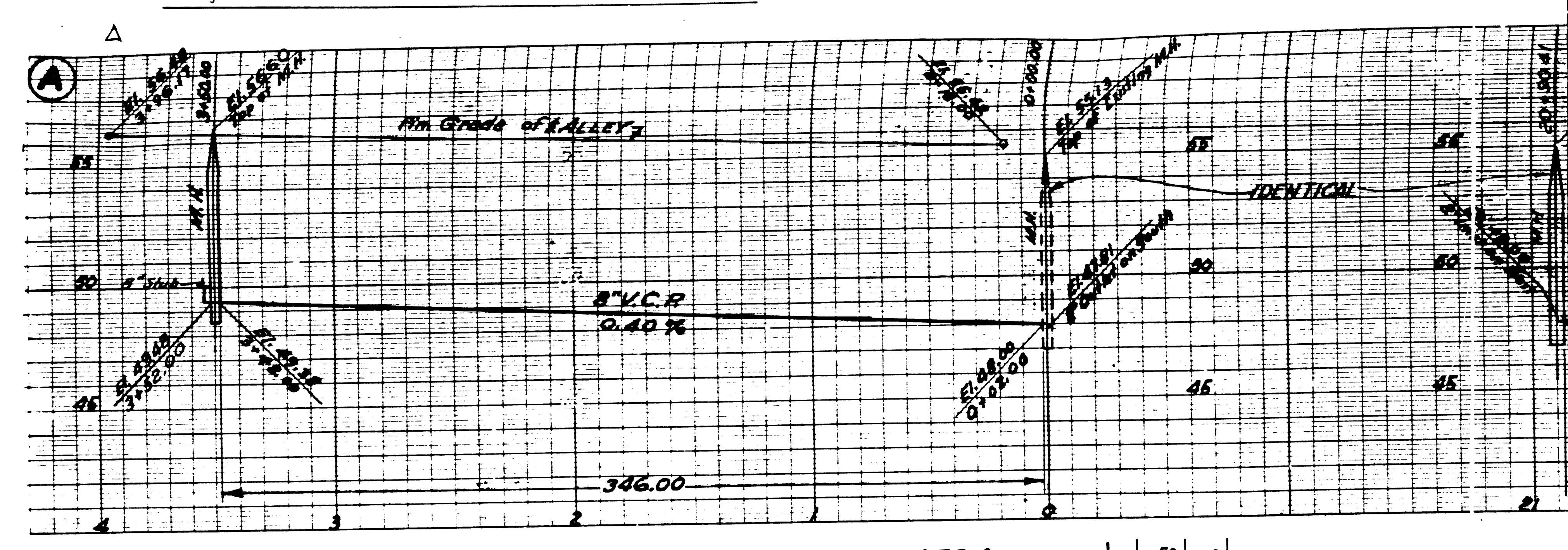
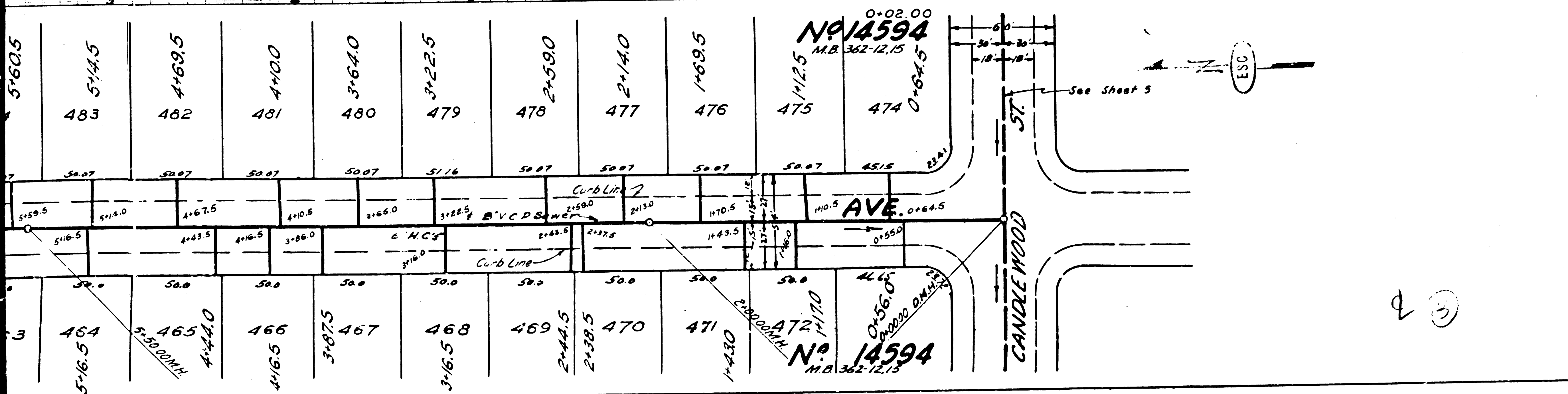
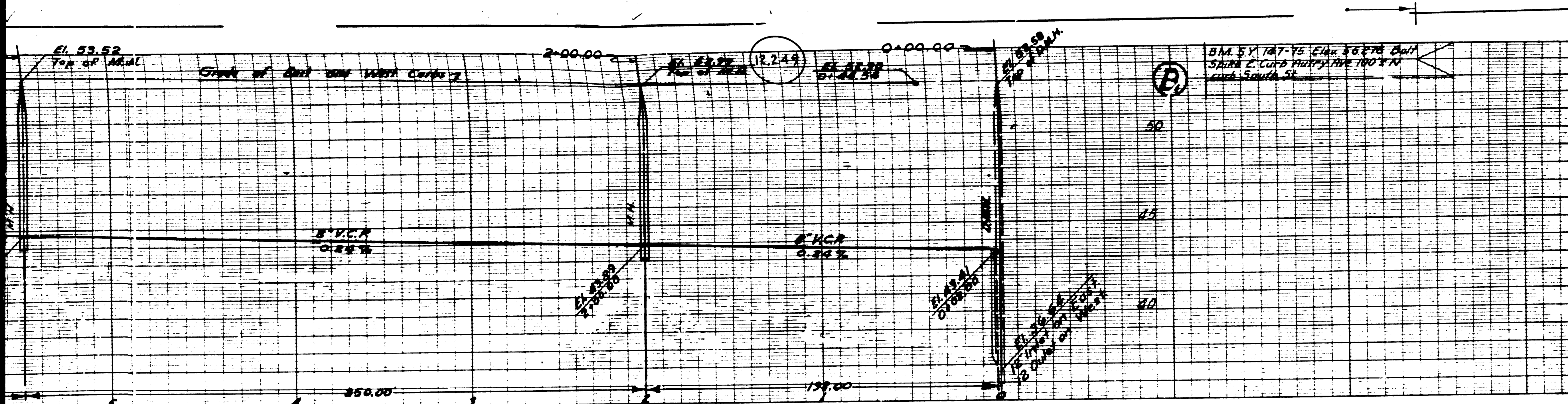


ENGINEERING SERVICE CORPORATION 1127 W. WASHINGTON BLVD. LOS ANGELES 15, CALIF.			
REVISIONS		TRACED BY: S.L.	
L.A. County recommendation		DESIGNED BY: R.V.M.	
		CHECKED BY: M.S.	
		SUBMITTED BY: M. Kelly	
SUB STRUCTURES CK'D			
W.O. NO.	DWG NO.	DATE	SCALE
5977-3	3-12-51	4-12-50	1" = 40'

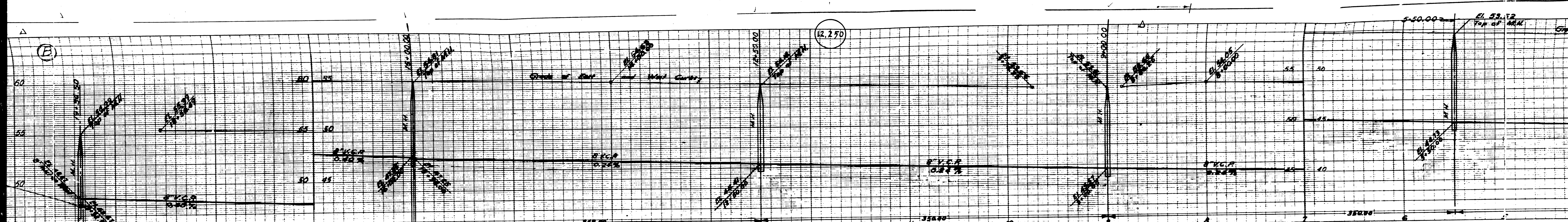
BY: P.F. Keen  
 REG. C. E. NO. 1097  
 MAY 10 1950  
 FOR LEGALITY  
 SEE PLAN NO. S-254  
 FOR CONSTRUCTION NOTES SEE SHEET 1  
 COUNTY OF LOS ANGELES, CALIFORNIA  
 APPROVED: [Signature]  
 APPROVED: [Signature]  
 CHECKED: [Signature]  
 OFFICE OF COUNTY ENGINEER, REG. C. E. NO. 1582

BELLFLOWER BLVD.  
 BETWEEN CANDLEWOOD ST. AND FIRST ALLEY  
 SOUTH OF SOUTH ST.  
 MONTAIR AVE.  
 BETWEEN CANDLEWOOD ST. AND ALLEY AVE.  
 FIRST ALLEY SOUTH OF SOUTH ST.  
 BETWEEN BELLFLOWER BLVD. & THE ALLEY WEST  
 OF BELLFLOWER BLVD.  
 IN TRACT N-14594  
 PRIVATE CONTRACT NO. 1229  
 W.S. 33, 31.  
 SHEET 4 OF 5 SHEETS









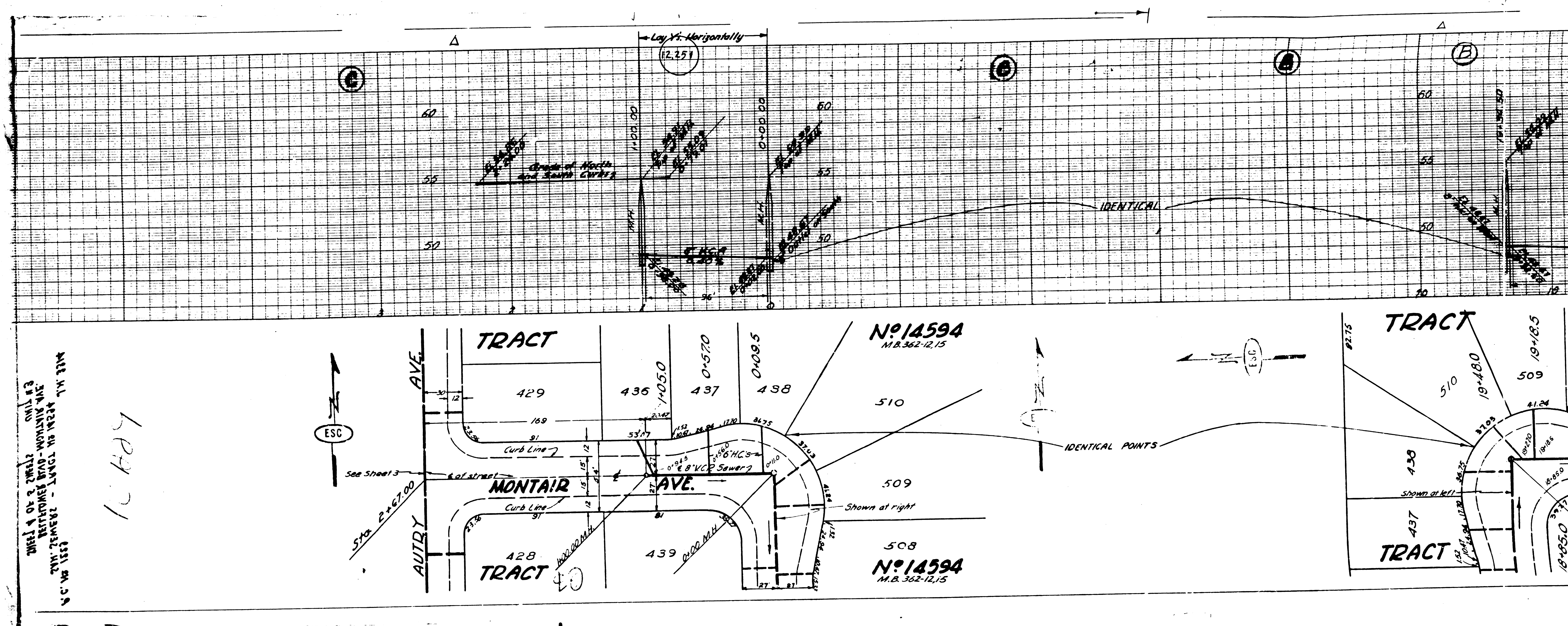
510	19+46.0	509	19+18.5	508	18+66.5	507	18+10.5	506	17+64.0	505	17+17.5	504	16+56.5	503	16+10.5	502	15+54.0	501	15+06.5	500	14+52.0	499	14+05.5	498	13+54.0	497	13+01.5	496	12+53.5	495	12+07.0	494	11+43.0	493	10+98.0	492	10+50.5	491	9+91.5	490	8+79.0	489	8+22.5	488	7+56.5	487	7+22.5	486	6+61.0	485	6+22.5	484	5+60.5	483	5+14.5	482	4+09.5
443	18+05.0	440	18+20.0	441	17+00.0	442	16+95.0	443	16+66.0	444	16+16.0	445	15+85.5	446	15+20.0	447	14+62.0	448	14+30.5	449	13+55.5	450	13+02.0	451	12+29.5	452	11+01.0	453	11+11.5	454	11+01.0	455	10+21.0	456	9+93.5	457	8+75.0	458	8+16.5	459	7+18.5	460	7+17.5	461	6+42.5	462	6+16.0	463	5+08.5	464	5+16.5	465	5+50.0	466	4+41.0		

MONTAIG

M. CHELSON ST.

12.270

51.53.12  
TOP OF MAN



SEE SHEETS  
 100' W. 155' E.  
 100' W. 155' E.  
 100' W. 155' E.  
 100' W. 155' E.

100' W. 155' E.

No 14594  
 M.B. 362-12, 15

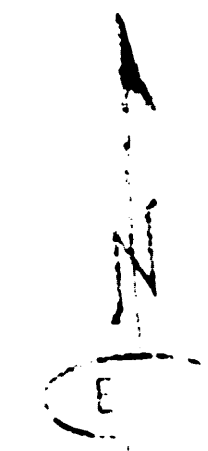
No 14594  
 M.B. 362-12, 15

TRACT

TRACT

TRACT

TRACT



IDENTICAL POINTS

IDENTICAL

Lay X's Horizontally

(12, 251)

A

B

60

50

50

60

50

50

50

50

50

50

50

50

50

50

50

50

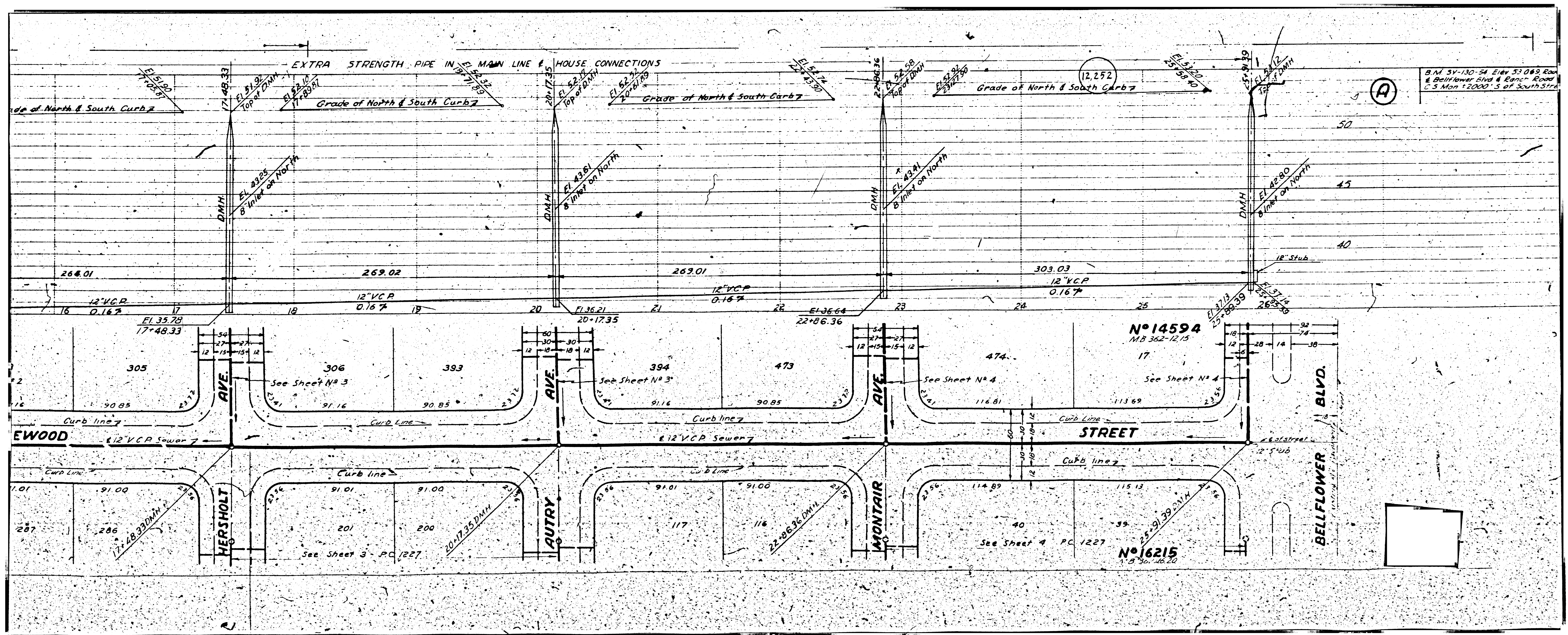
50

50

50

50

50



(A)

N<sup>o</sup> 14594

N<sup>o</sup> 16215

