

160
155
150

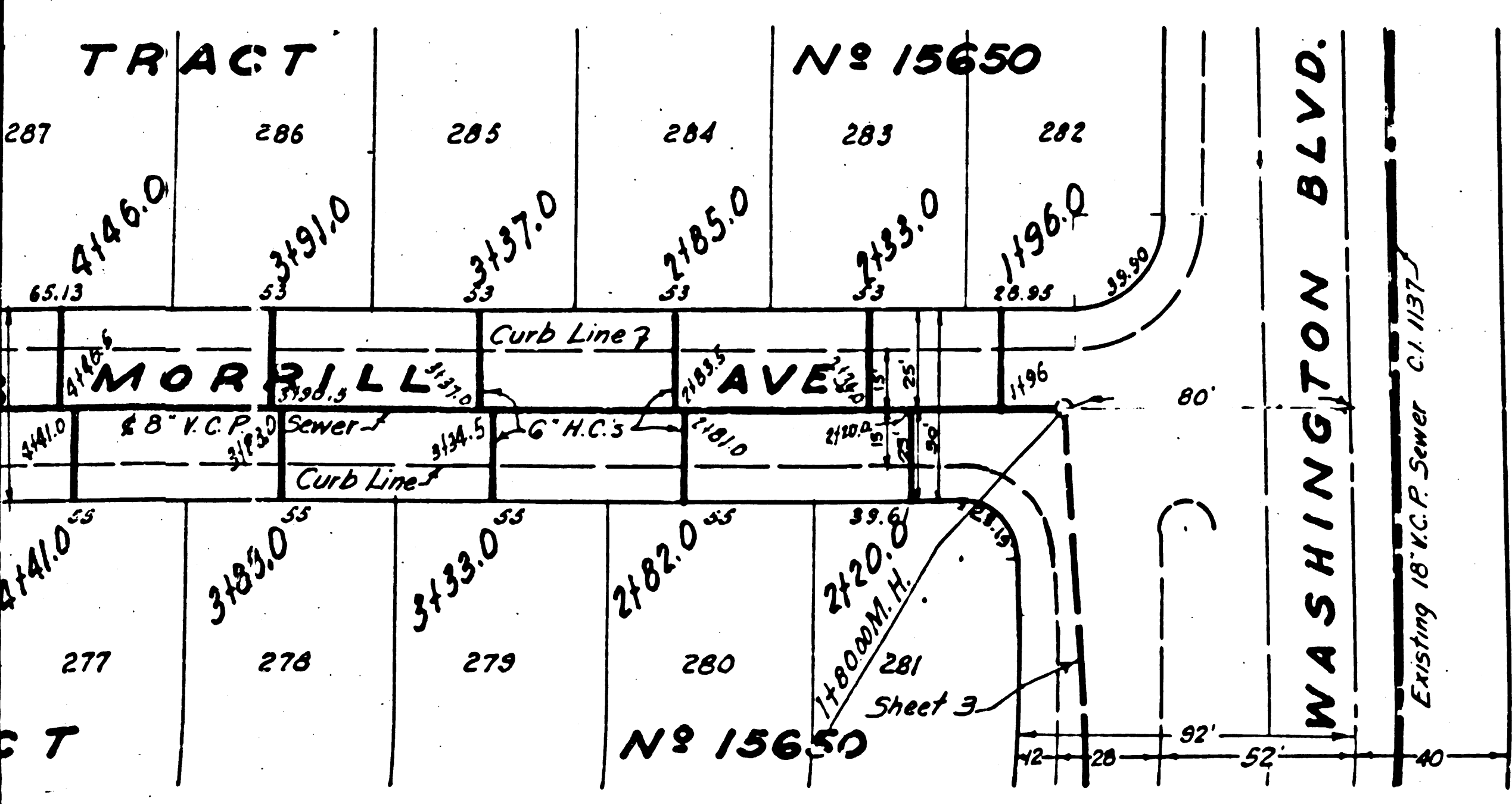
10,247

STANDARD MANHOLE FRAMES AND COVER, S-8-117.
USE STANDARD STRENGTH PIPE EXCEPT AS NOTED.
USE CEMENT MORTAR FOR ALL VITRIFIED CLAY PIPE JOINTS.
RESURFACE ALL TRENCH WITHIN PAVED AREA TO MEET LOS ANGELES COUNTY ROAD DEPT. REQUIREMENTS.
CONSTRUCT MANHOLE CONNECTIONS WITH INVERT AT PROPERTY LINE, 5 FEET BELOW CURB GRADE, OR GRADE OF ALLEY.
ENCASE FOUR FEET OF SEWER AT POINTS OF INTERFERENCE WITH PILES AS PER S-8-119.
ALL STRUCTURES SHALL BE BANK SEWER STRUCTURES, S-8-116.
PROVIDE STAKES ON THE PROPERTY LINES OR PROPERTY LINES PRODUCED AT RIGHT ANGLES TO THE SEWER LINE AT THE CENTER LINE OF EACH MANHOLE.

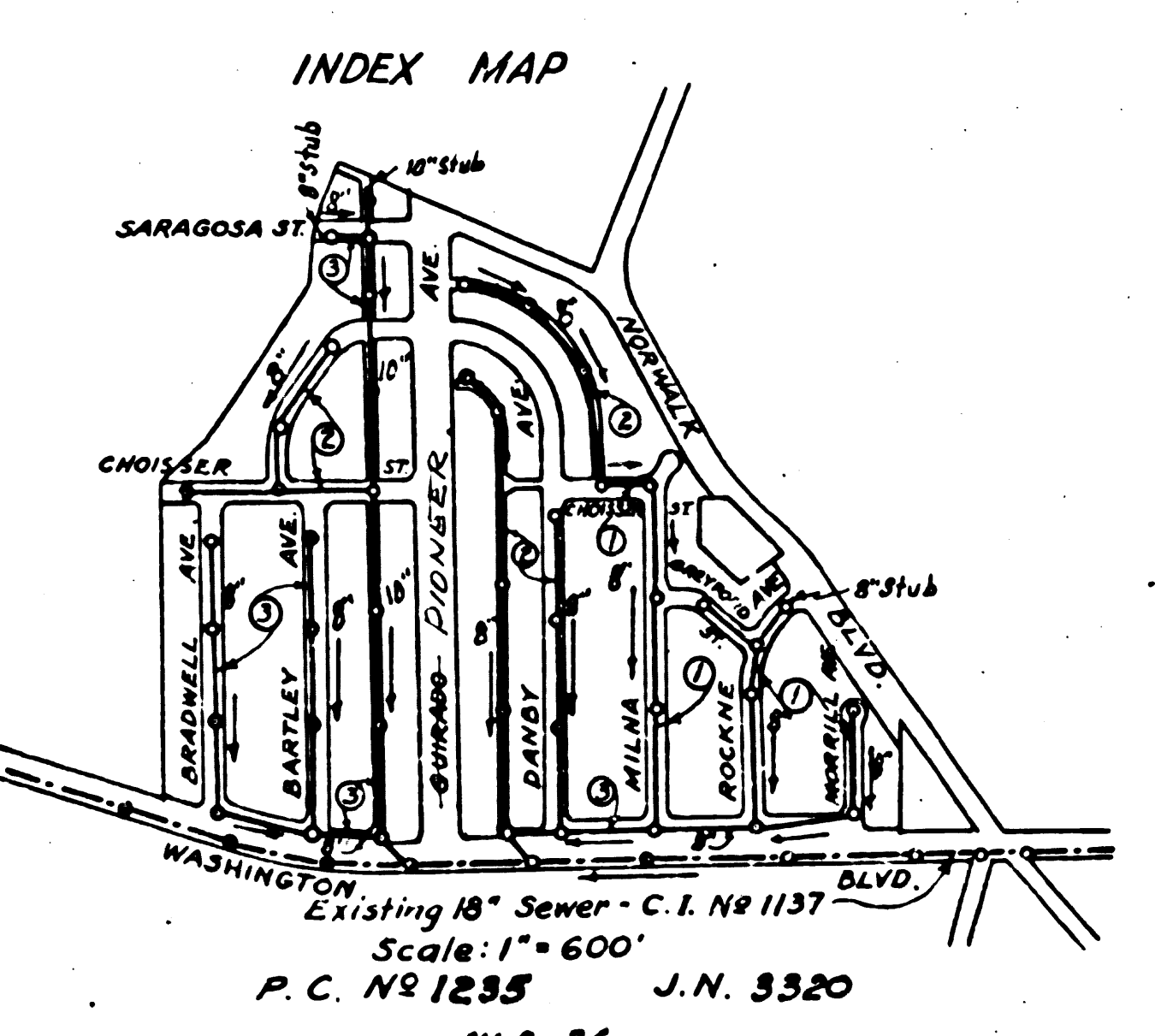
Note: No representative of the County Engineer will accept any portion of the work.
The Owner or his authorized representative shall furnish the County Engineer with grade sheets and stations of all house connections and Y branches and shall provide stakes for them at their proper locations with elevations plainly marked. Any change of location shall be requested in writing by Owner or his representative.
No revisions shall be made in these plans without approval of County Engineer.

Road Dept. R.M. S.Y. 607-237
El. 159.24 Equals B.M. #2 (No Ref.)
El. 159.958 - Bad Spk. & Lead N.W.
Cor. Norwalk Blvd. & Washington Blvd.
Marked B.M. - B.D. 90

PROFILE, ALIGNMENT AND GRADE OF	
SANITARY SEWERS	
TO BE CONSTRUCTED IN	
MORRILL AVE.	
BETWEEN WASHINGTON BLVD. AND 350 FT. NORTHEAST THEREFROM	
ROCKNE AVE.	
BETWEEN WASHINGTON BLVD. AND NORWALK BLVD.	
GREYFORD ST.	
BETWEEN ROCKNE AVE. AND MILNA AVE.	
MILNA AVE.	
BETWEEN WASHINGTON BLVD. AND CHOISSEY ST.	
CHOISSEY ST.	
BETWEEN MILNA AVE. AND FIRST ALLEY EAST OF DANBY AVE.	
PRIVATE CONTRACT NO. 1235	
W.S. 36	
SHEET 1 OF 3 SHEETS	
PREPARED IN THE OFFICE OF	
WM. H. FAIR JR.	
SCALE VERTICAL	1" = 4'
SCALE HORIZONTAL	1" = 40'
NOV 1949	



Road Dept. Curb Grades and Sanitary Sewer Grades are based on B.M. El. 159.958



NOTES:
GRADES TO WHICH THIS IMPROVEMENT IS TO BE CONSTRUCTED ARE SHOWN ON PLANS AND PROFILES
GRADE POINTS POSTED AT CURB, CENTER LINE OF STREET OR CENTER LINE OF ALLEY ARE SHOWN BY
CIRCLES ON PROFILES. AT ALL POINTS BETWEEN DESIGNATED POINTS THE GRADE SHALL BE ESTABLISHED
SO AS TO CONFORM TO A STRAIGHT LINE BETWEEN SAID DESIGNATED POINTS.
ELEVATIONS ARE IN FEET ABOVE U.S.S. MEAN SEA LEVEL.
THIS DRAWING AND THE DATA HEREON ARE HEREBY MADE A PART OF THE SPECIFICATIONS
WORK SHALL BE CONSTRUCTED ACCORDING TO SPECIFICATIONS ON FILE IN THE OFFICE OF THE
COUNTY ENGINEER AND SHALL BE PROSECUTED ONLY IN THE PRESENCE OF THE COUNTY ENGINEER.
BEFORE WORK CAN BE STARTED, THE CONTRACTOR MUST OBTAIN A PERMIT TO EXCAVATE IN
COUNTY STREETS FROM THE L.A. COUNTY ROAD DEPT. 211 SOUTH MAIN ST. AND MAKE A DEPOSIT
WITH THE COUNTY ENGINEER, 828 L.A. COUNTY BLDG. BLDG., SUBJECT TO COVER THE COST
OF CONSTRUCTION INSPECTION AND RECORD PLANS.
APPROVAL OF THIS PLAN BY THE COUNTY OF LOS ANGELES DOES NOT
CONSTITUTE A REPRESENTATION AS TO THE ACCURACY OF THE LOCATION OF, OR THE
EXISTENCE OR NON-EXISTENCE OF, ANY UNDERGROUND UTILITY, PIPE, OR STRUCTURE
WITHIN THE LIMITS OF THIS PROJECT.

COUNTY OF LOS ANGELES, CALIFORNIA
APPROVED *Wm. H. Fair Jr.*
COUNTY ENGINEER
APPROVED *Wm. H. Fair Jr.*
CHIEF ENGINEER OF COUNTY
SANITATION DISTRICT NO. 2

CHECKED BY *Wm. H. Fair Jr.* P.E. No. 117675
OFFICE OF COUNTY ENGINEER

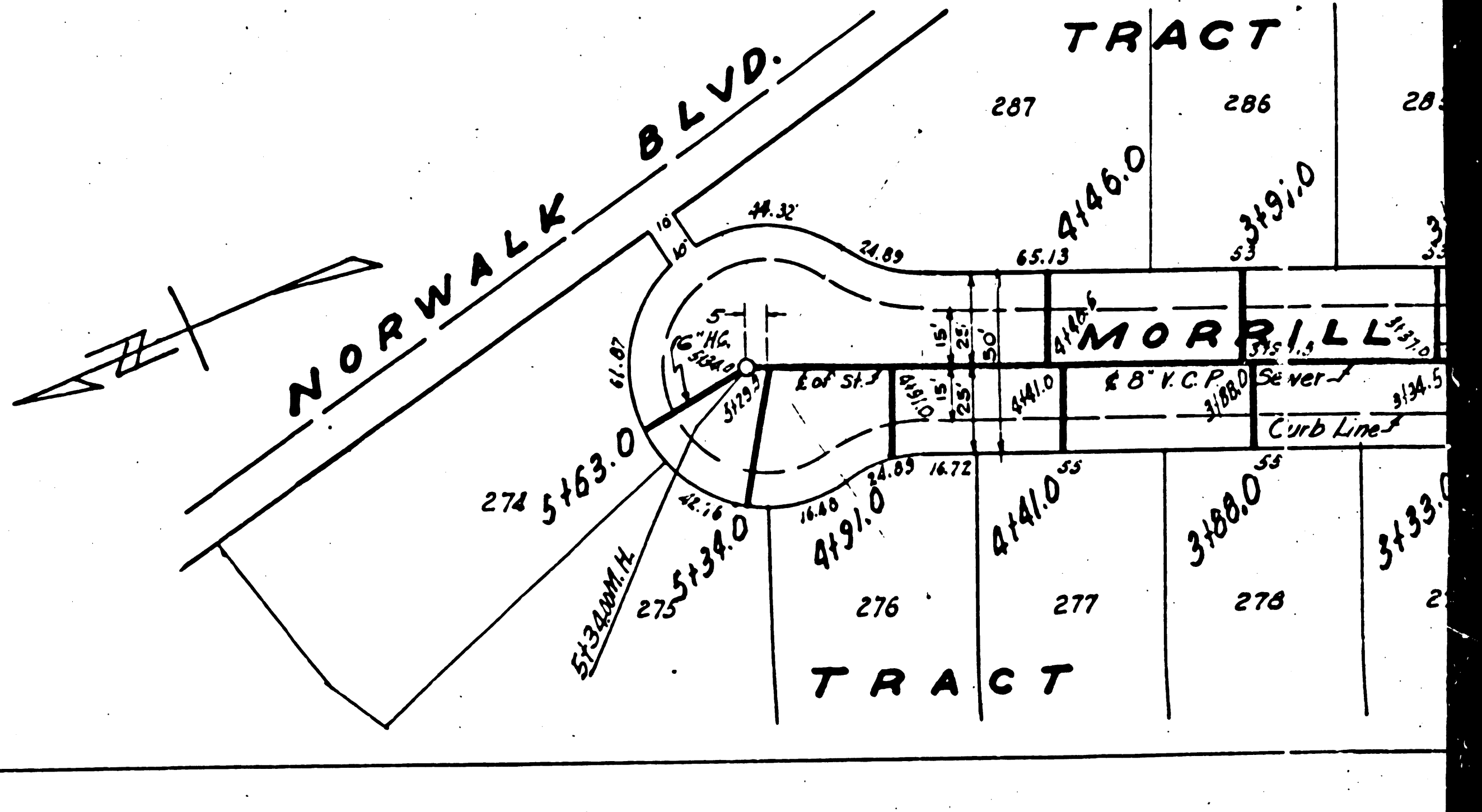
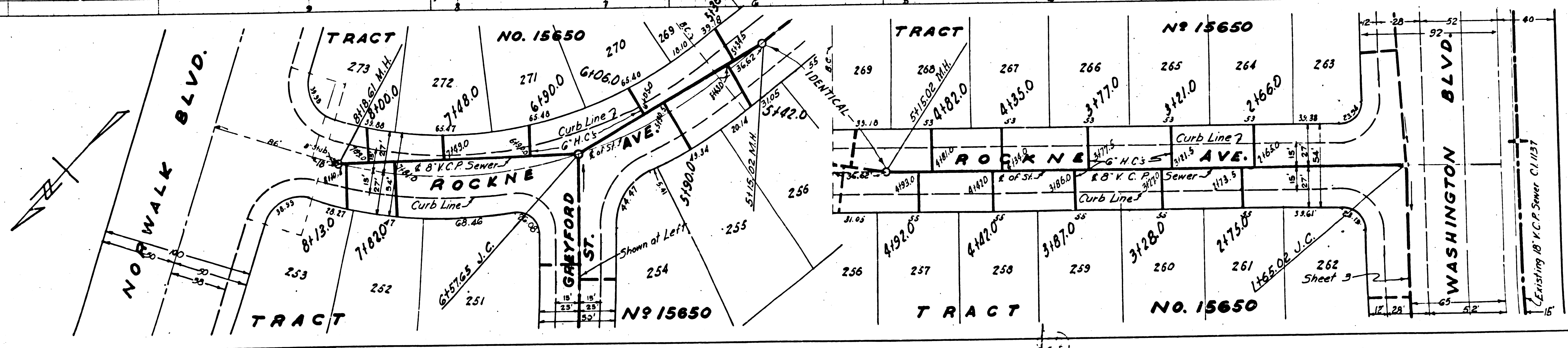
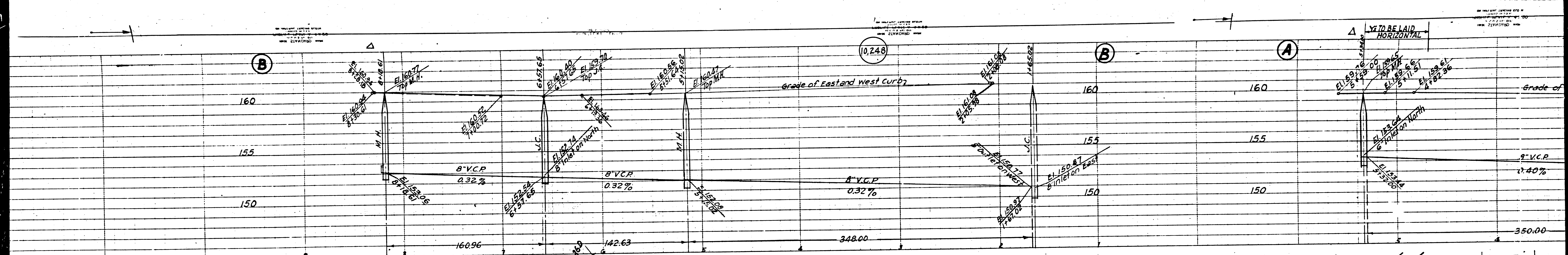
NOV 11 1949

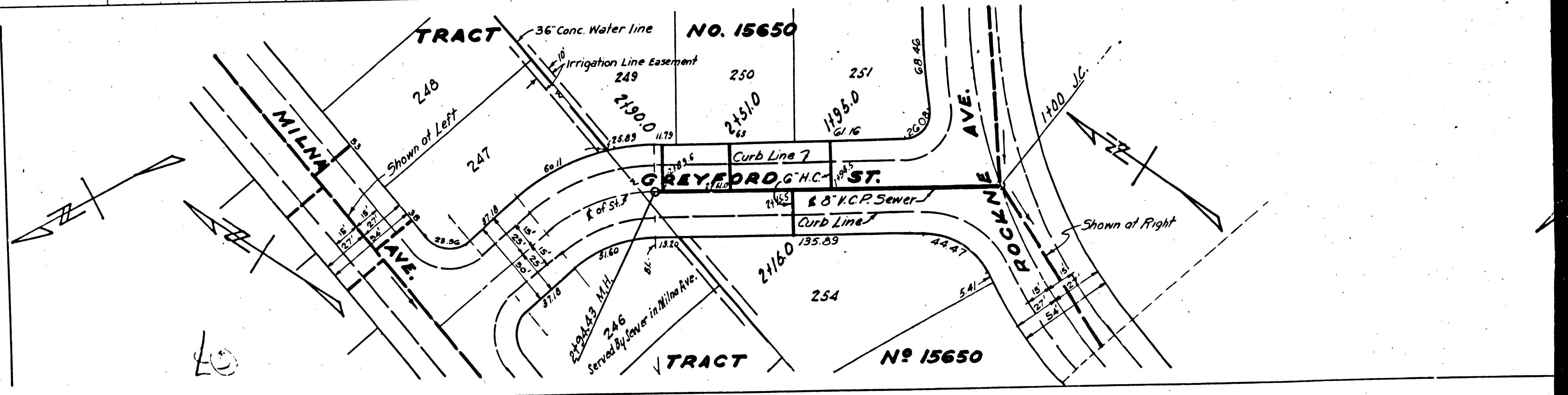
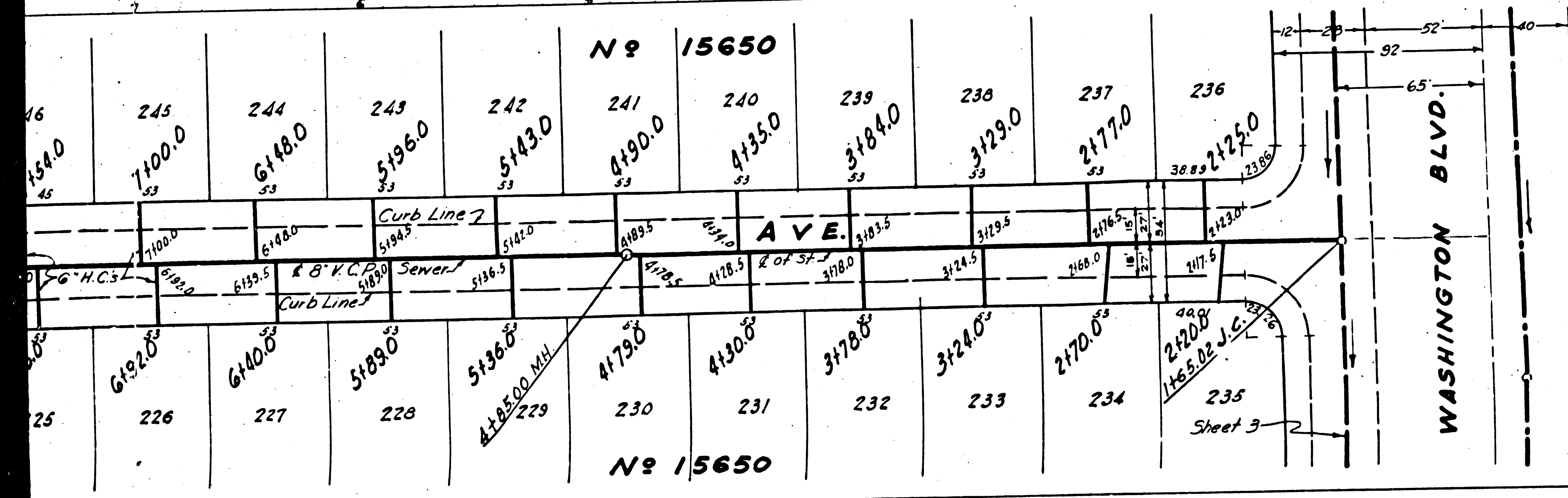
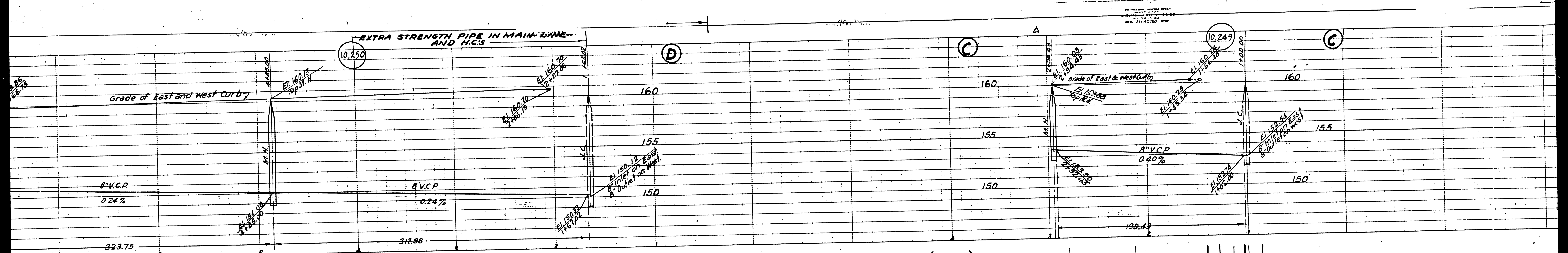
Checked 5-2-93

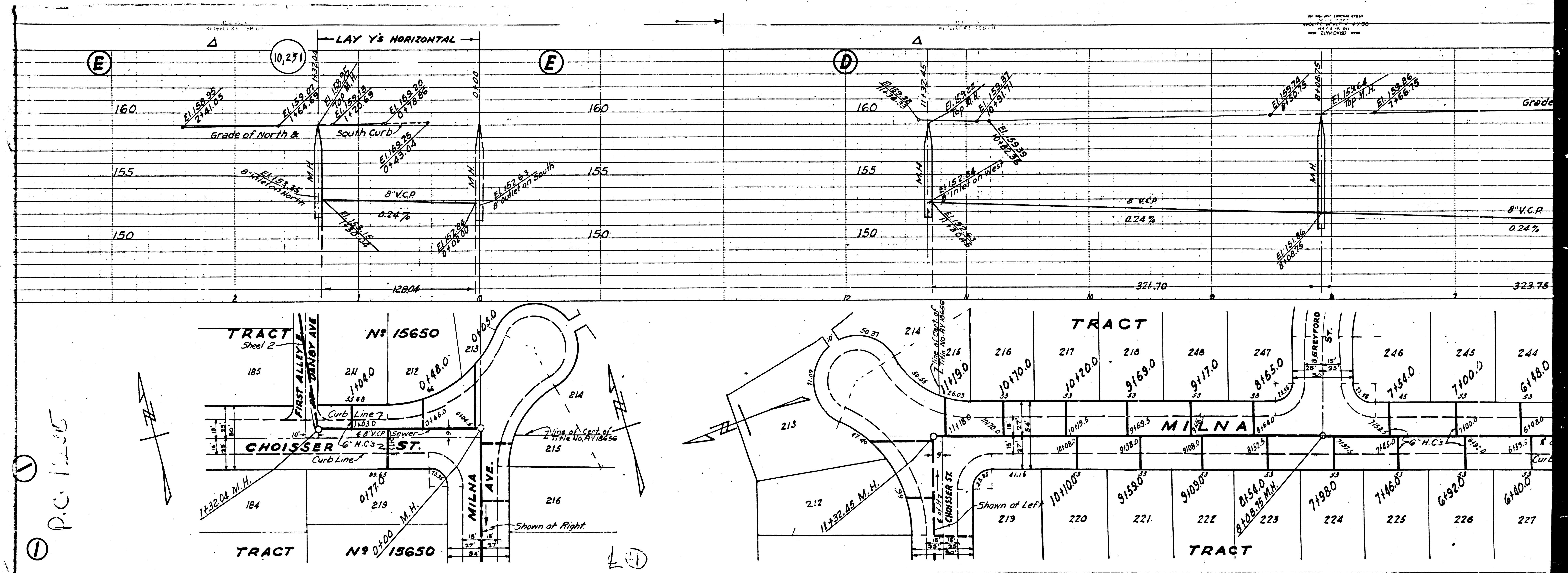
532

1

1

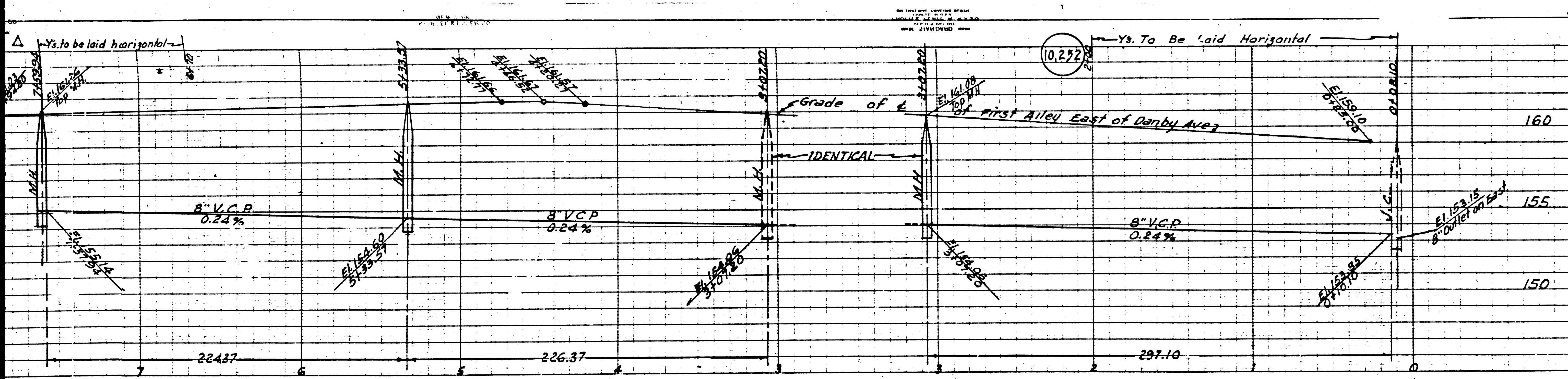






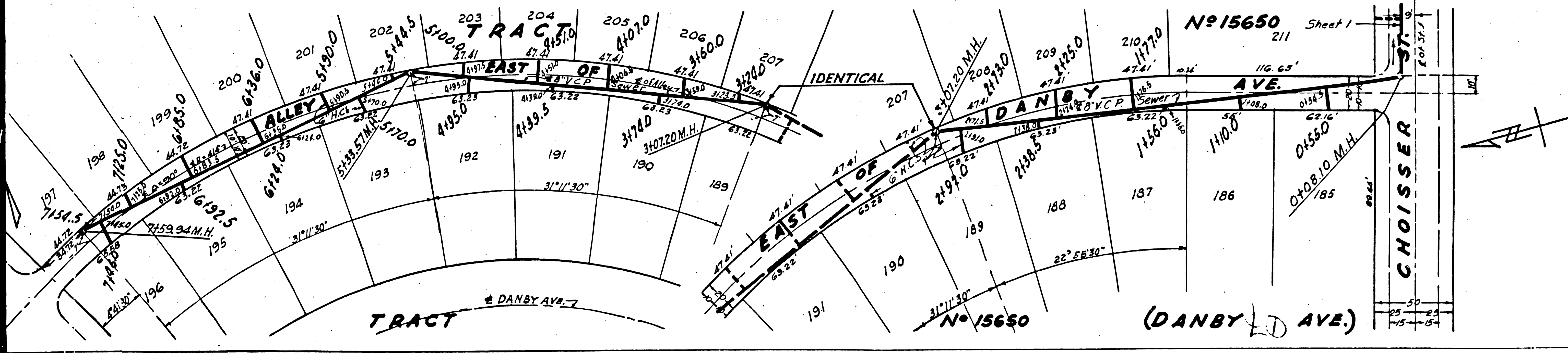
① P.C. 1285

①



PROFILE, ALIGNMENT AND GRADE OF
SANITARY SEWERS
 TO BE CONSTRUCTED IN
DANBY AVE.
 BETWEEN CHOISSEY ST. AND WASHINGTON BLVD.
FIRST ALLEY EAST OF DANBY AVE.
 BETWEEN CHOISSEY ST. AND GUNNARD AVE.
FIRST ALLEY EAST OF GUNNARD AVE.
 BETWEEN CHOISSEY ST. AND 1447 1/2 NORTHEASTLY THEREFROM
CHOISSEY ST.
 BETWEEN BARDWELL AVE. AND ALLEY
BARTLEY AVE.
 BETWEEN CHOISSEY ST. AND 1457 1/2 NORTHEASTLY THEREFROM
 PRIVATE CONTRACT NO. 1235
 W.S. 36

Road Dept. B.M. S.Y. 607-237
 El. 159.24 Equals B.M. #2 (No Ref.)
 El. 159.958 - Boat Spk & Lead N.W.
 Cor. Norwalk Blvd. & Washington Blvd.
 Marked B.M. D.D. 90



SCALE VERT. 1"=4'
 HORT. 1"=40'
 SHEET 2 OF 3 SHEETS
 PREPARED IN THE OFFICE OF
W.M.H. FAIR JR.
 BY **E.H. ...**
 REG. C.E. 115828

FOR LEGEND
 SEE PLAN NOS 3-64

FOR CONSTRUCTION NOTES SEE SHEET 1
 COUNTY OF LOS ANGELES, CALIFORNIA

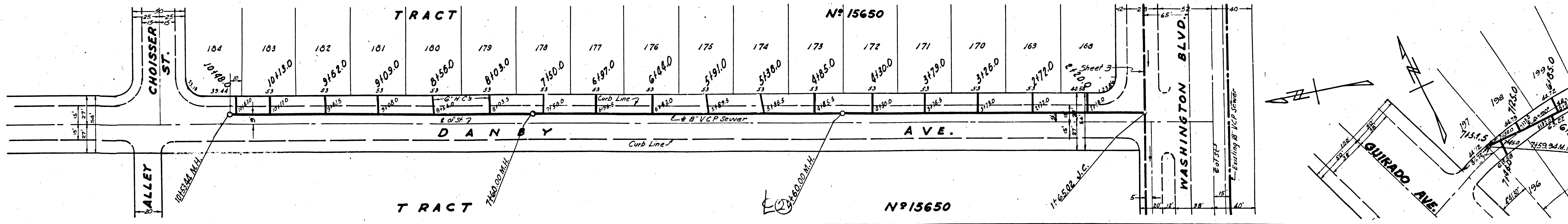
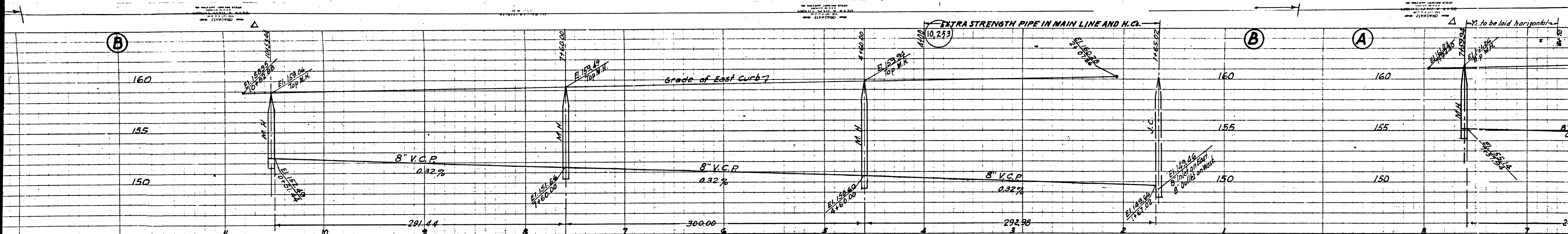
APPROVED **[Signature]**
 COUNTY ENGINEER

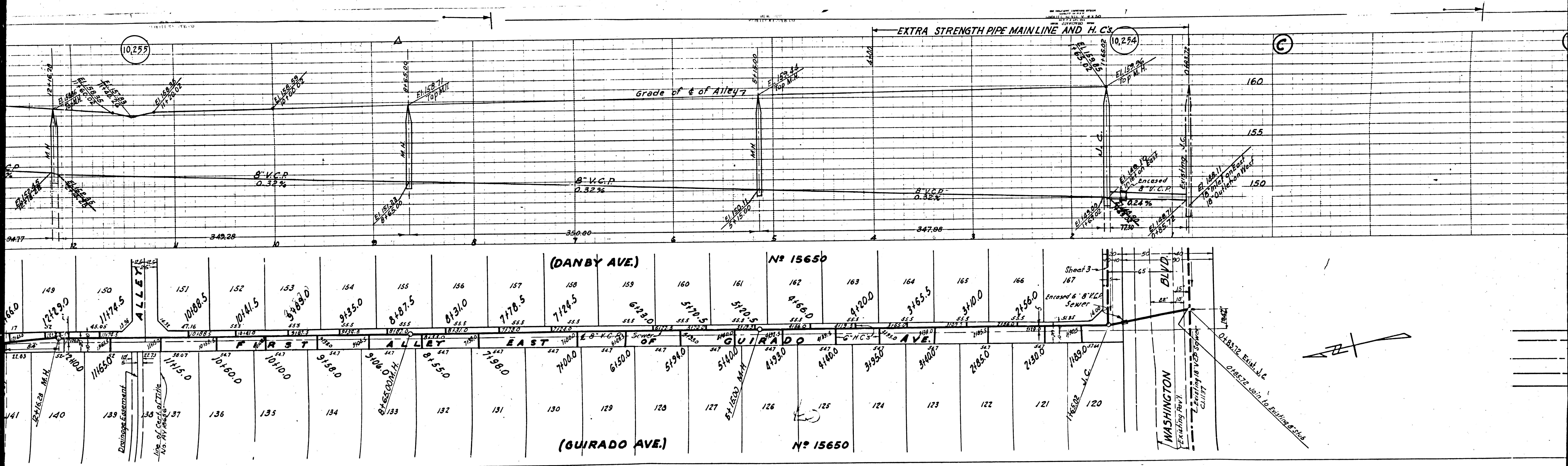
APPROVED **[Signature]**
 CHIEF ENGINEER OF COUNTY
 SANITARY DISTRICT 2

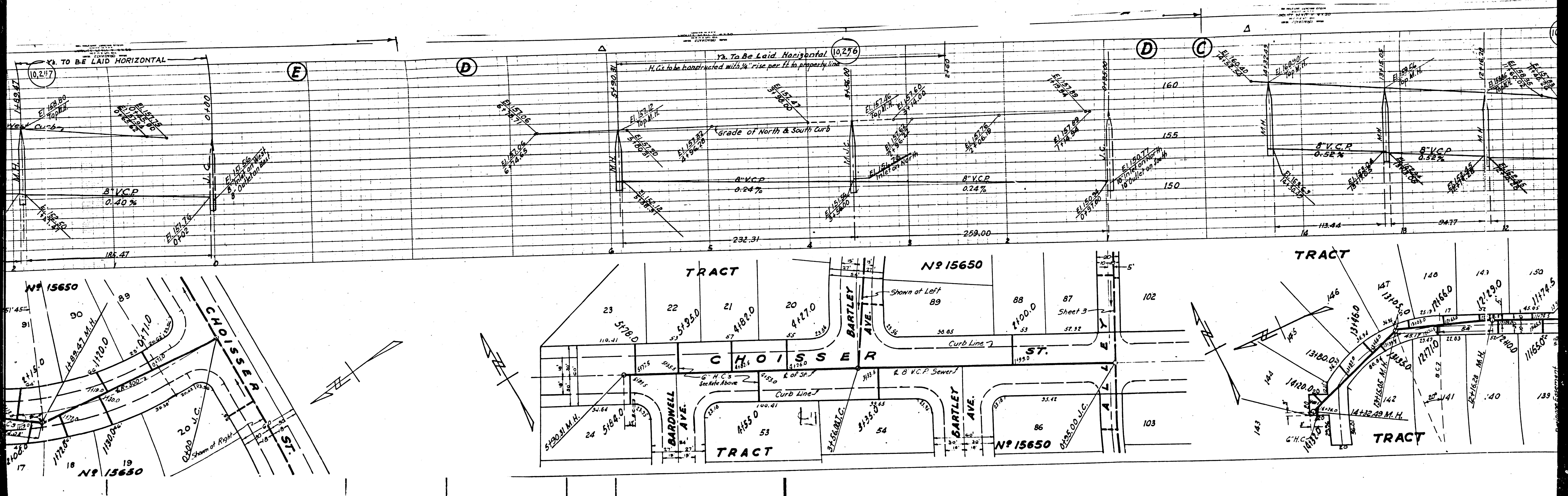
CHECKED BY **[Signature]**
 OFFICE OF COUNTY ENGINEER

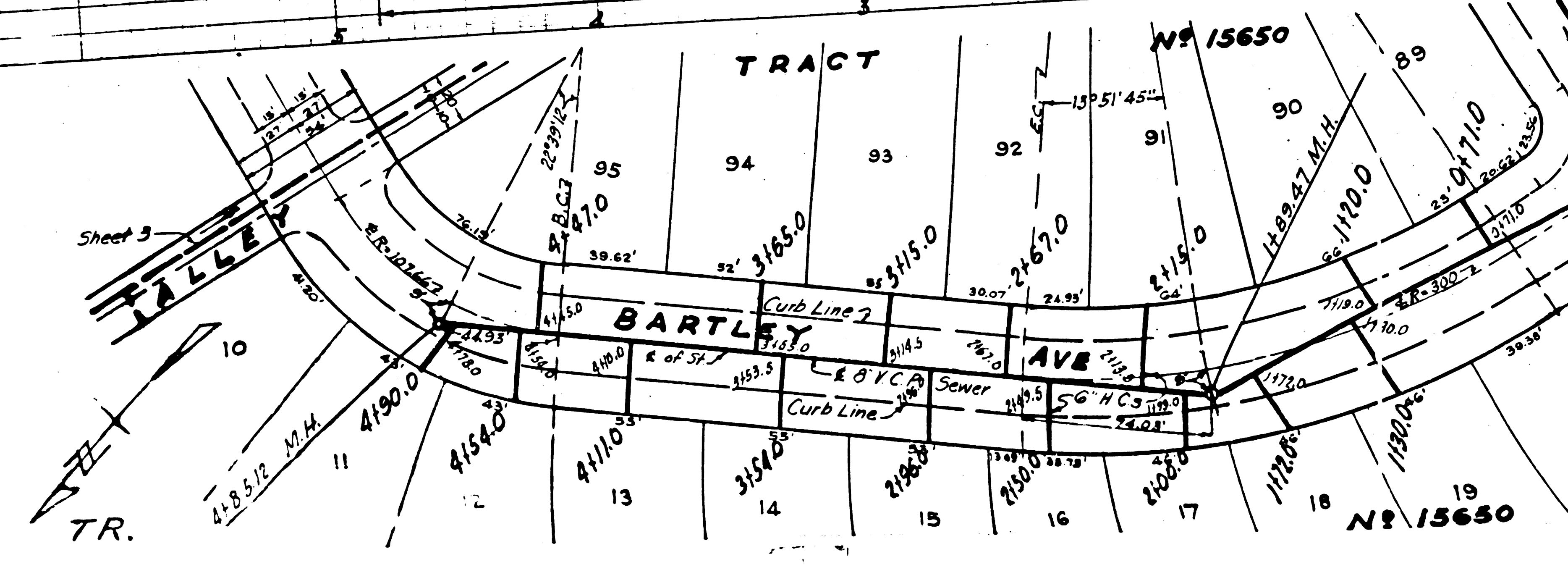
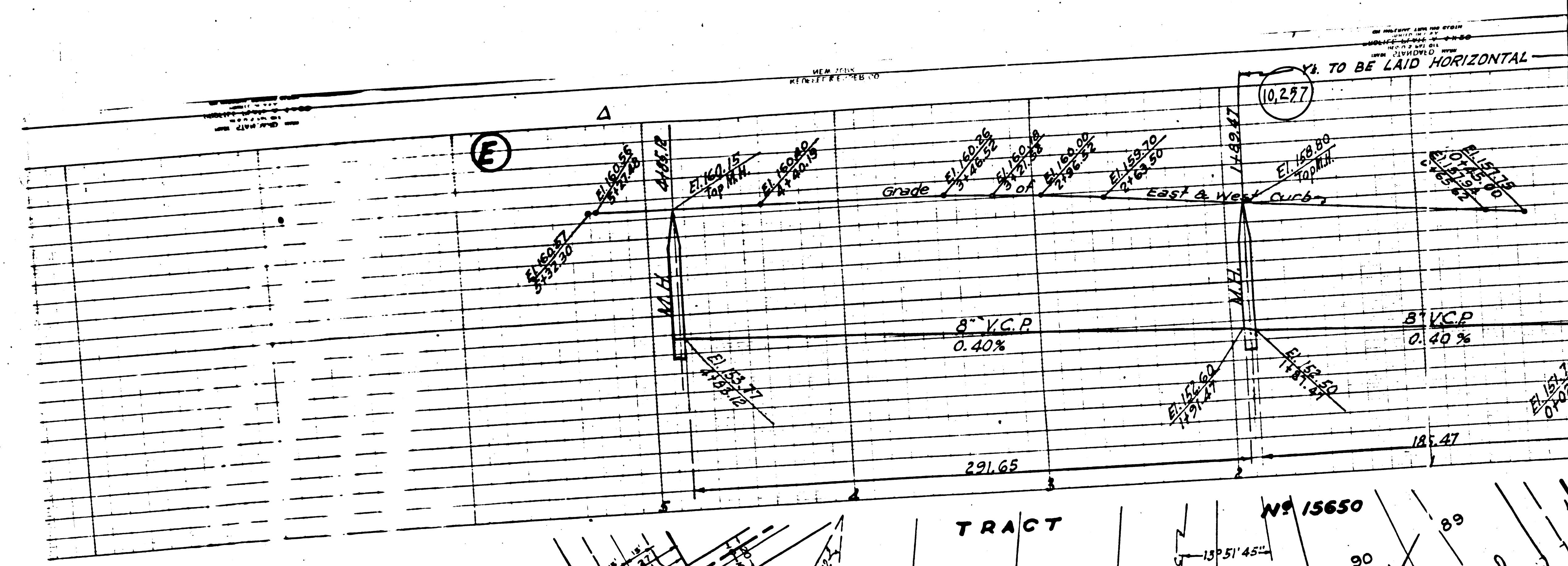
Nov. 14 1953

check 1 5-4-53 160 Linn

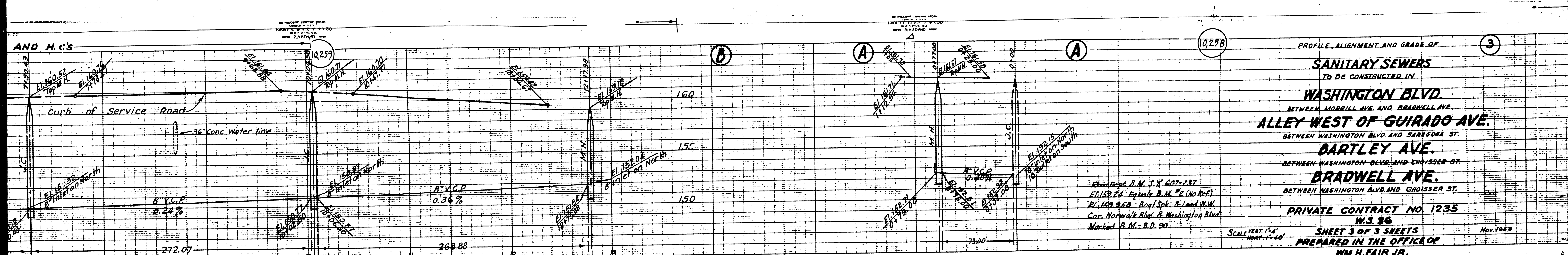








S P.C. 1235

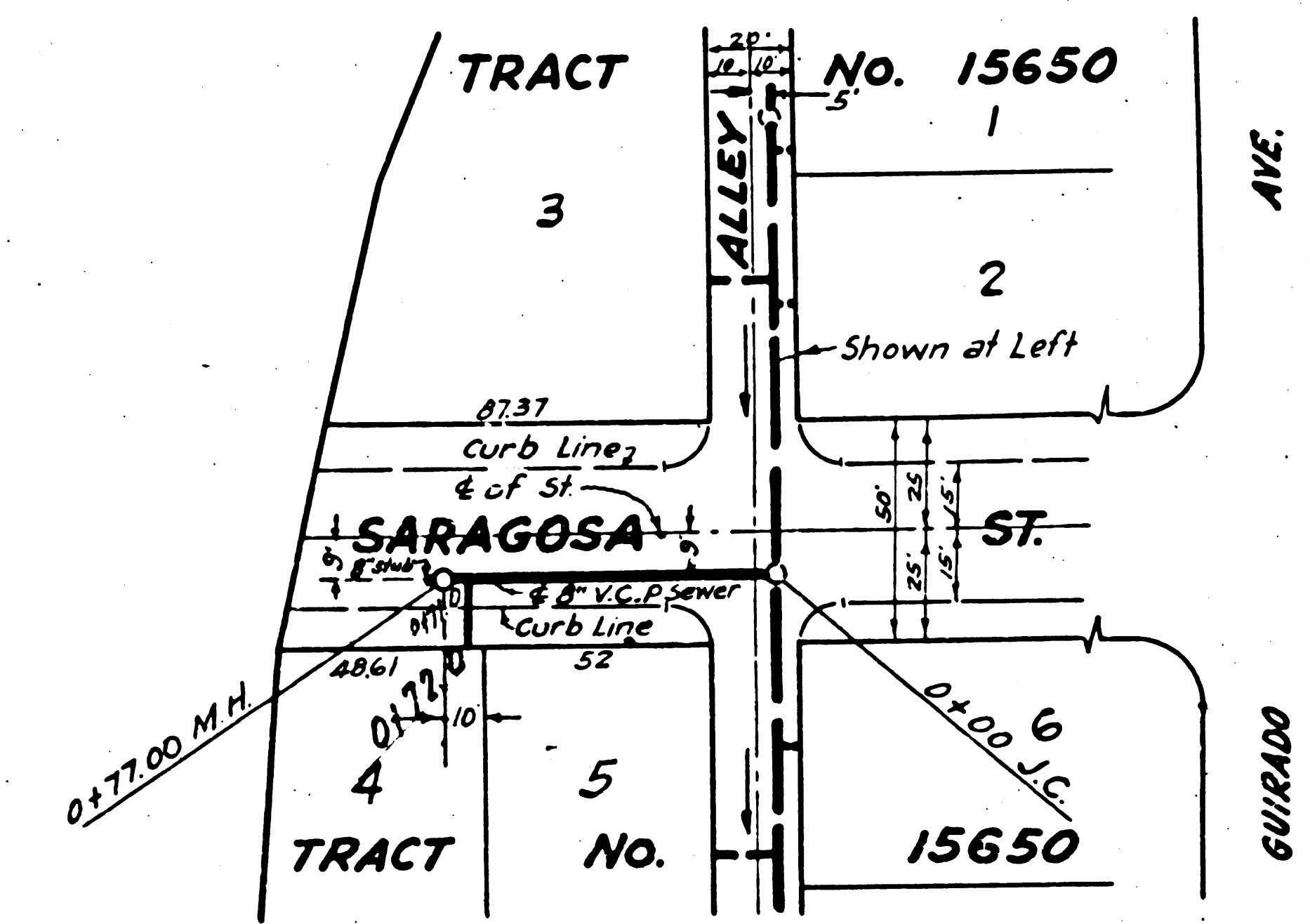
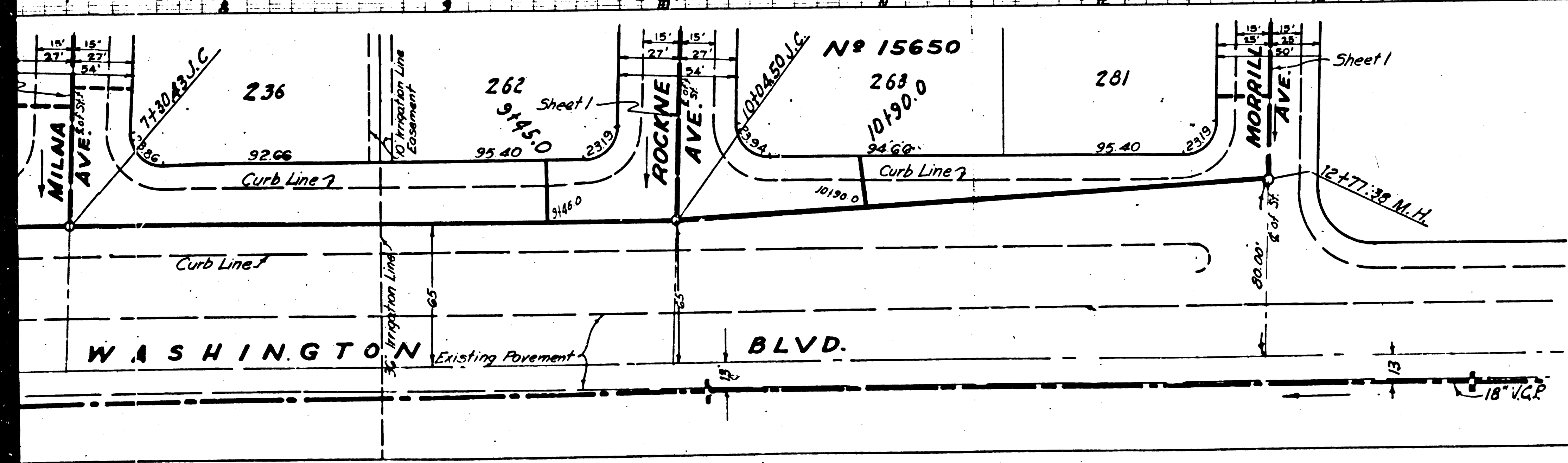


PROFILE, ALIGNMENT AND GRADE OF
SANITARY SEWERS
 TO BE CONSTRUCTED IN
WASHINGTON BLVD.
 BETWEEN MORRILL AVE AND BRADWELL AVE.
ALLEY WEST OF GUIRADO AVE.
 BETWEEN WASHINGTON BLVD AND SARAGOSA ST.
BARTLEY AVE.
 BETWEEN WASHINGTON BLVD AND CHOISSER ST.
BRADWELL AVE.
 BETWEEN WASHINGTON BLVD AND CHOISSER ST.
 PRIVATE CONTRACT NO. 1235
 W.S. 86
 SHEET 3 OF 3 SHEETS
 PREPARED IN THE OFFICE OF
 WM. H. FAIR JR.
 CIVIL ENGINEER
 220 W. 10th St.
 LOS ANGELES, CALIF.

Road Dept. B.M. T.Y. 607-237
 E.L. 158.74 - Equals B.M. #2 (No Ref.)
 E.L. 159.95B - Road Spk. B. Lead N.W.
 Cor. Norwalk Blvd. & Washington Blvd.
 Marked B.M. - B.D. 90.

SCALE VERT. 1" = 4'
 HORIZ. 1" = 40'

Nov. 1949



FOR LEGEND
 SEE PLAN NO. 5-64

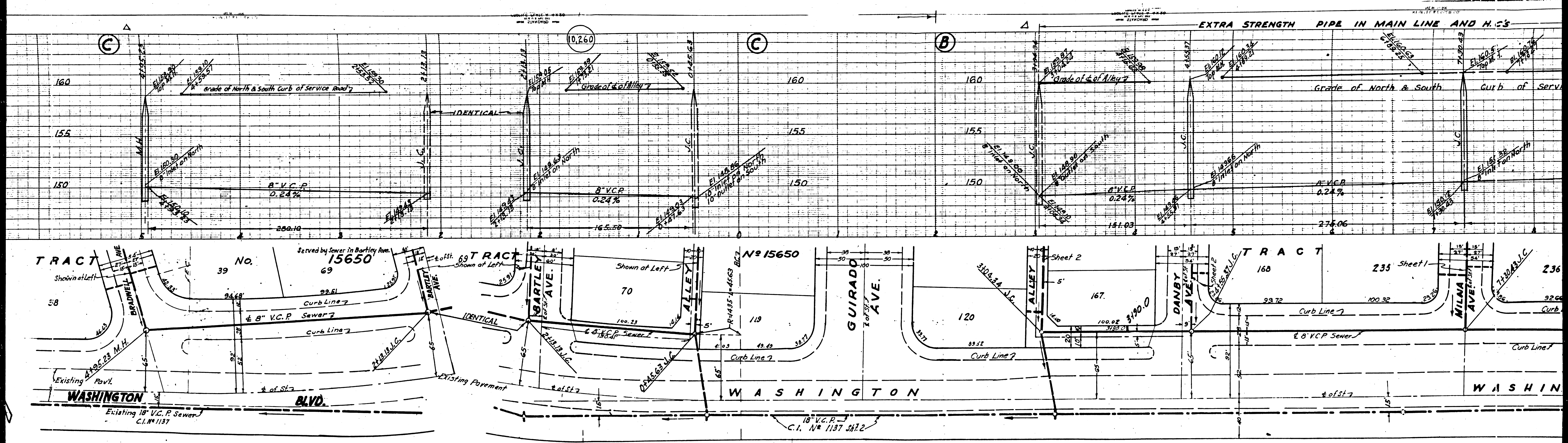
FEB 14 1950

FOR CONSTRUCTION NOTES SEE SHEET 1
 COUNTY OF LOS ANGELES, CALIFORNIA

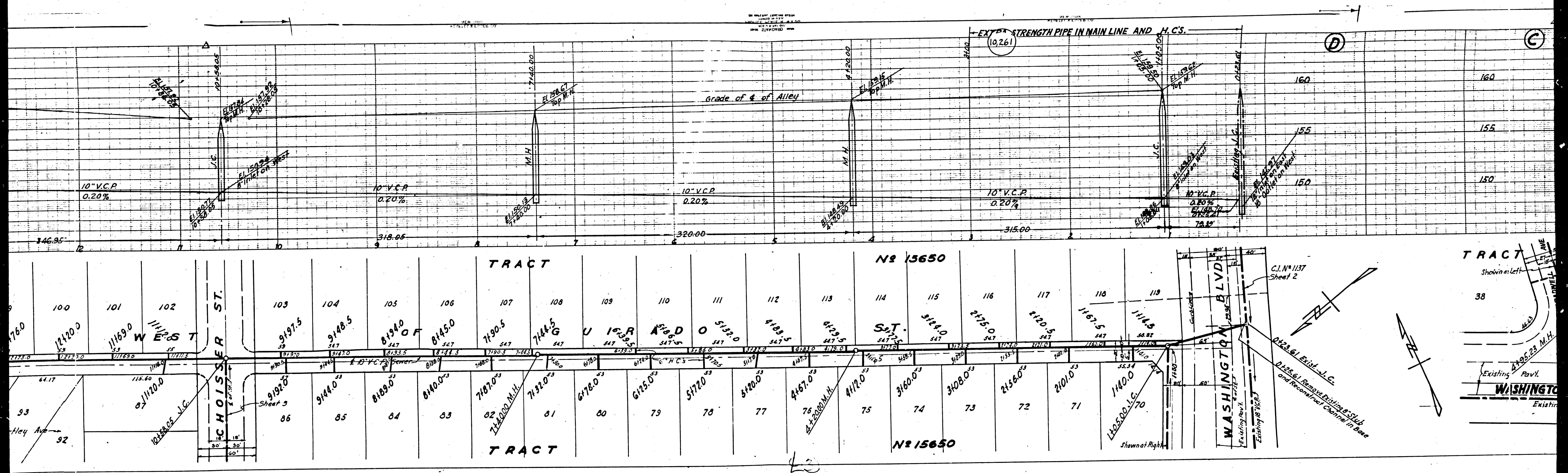
APPROVED *[Signature]*
 COUNTY ENGINEER

APPROVED *[Signature]*
 CIVIL ENGINEER OF COUNTY
 SANITATION DISTRICT 2

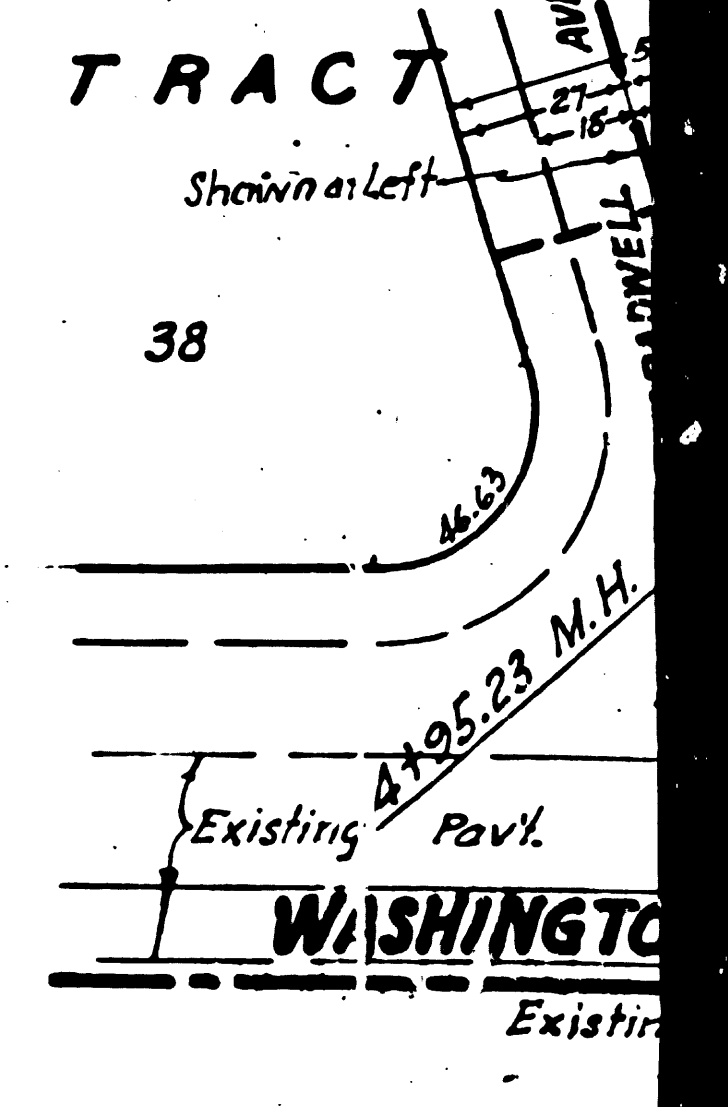
CHECKED BY *[Signature]* VIA C.E. NO. 7612
 OFFICE OF COUNTY ENGINEER



4-5



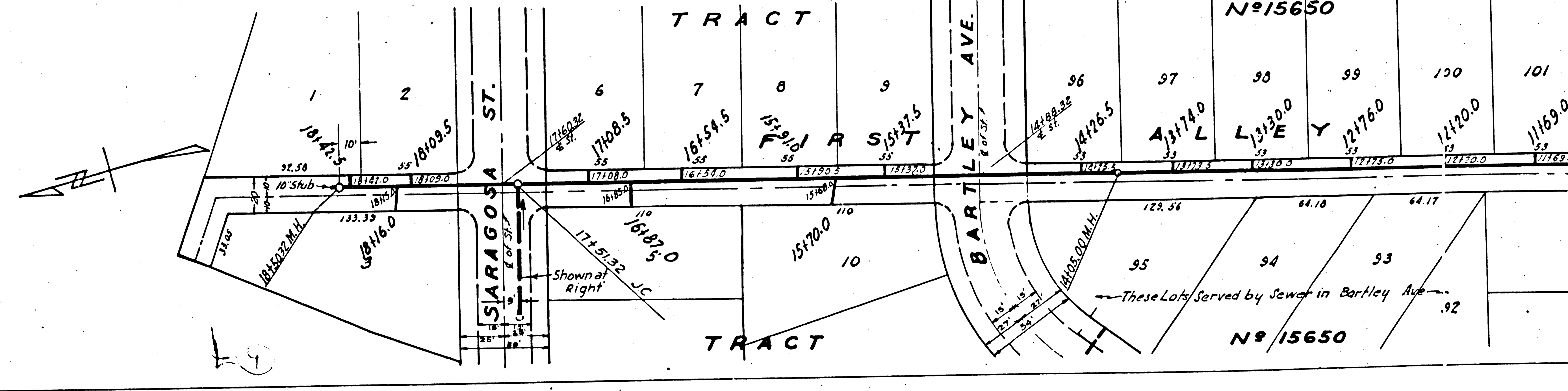
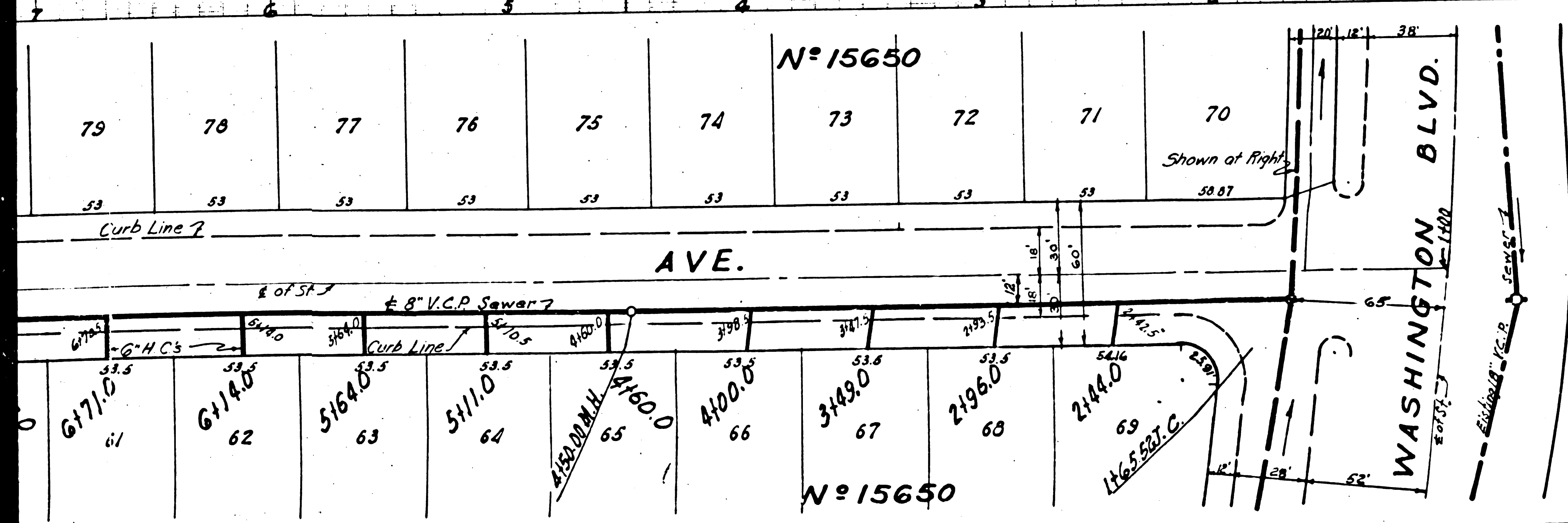
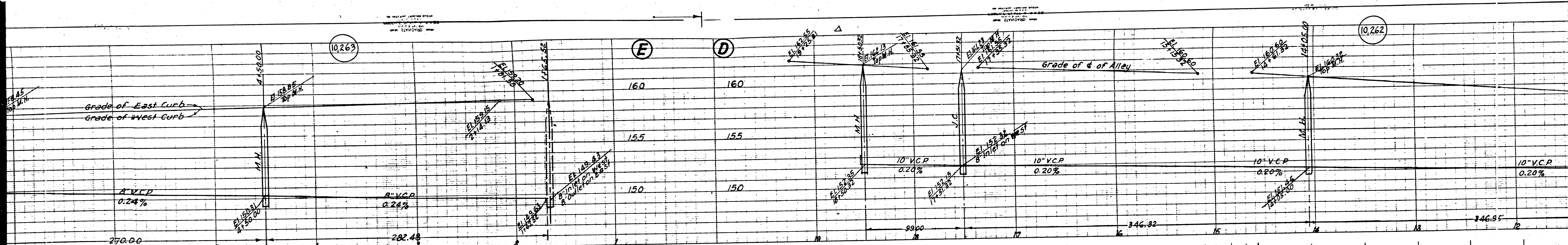
TRACT										TRACT									
100	101	102	103	104	105	106	107	108	109	110	111	112	113	114	115	116	117	118	119
1175.0	1212.0	1169.0	9197.5	9148.5	8194.0	8145.0	7190.5	7141.5	6186.0	5131.0	4176.5	4122.0	3167.5	3113.0	2158.5	2104.0	1149.5	111.5	111.5
33	32	31	30	29	28	27	26	25	24	23	22	21	20	19	18	17	16	15	14
TRACT										TRACT									

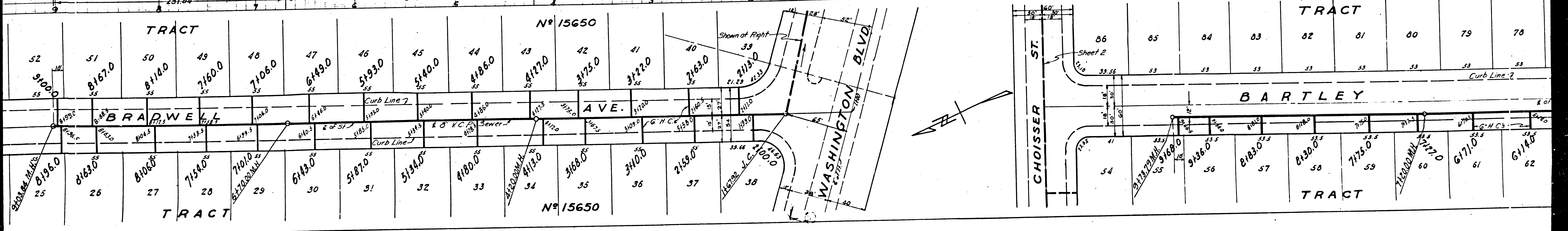
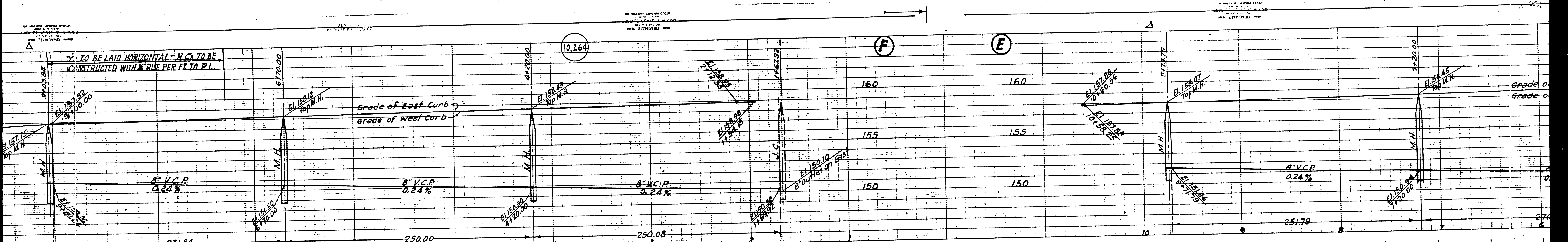


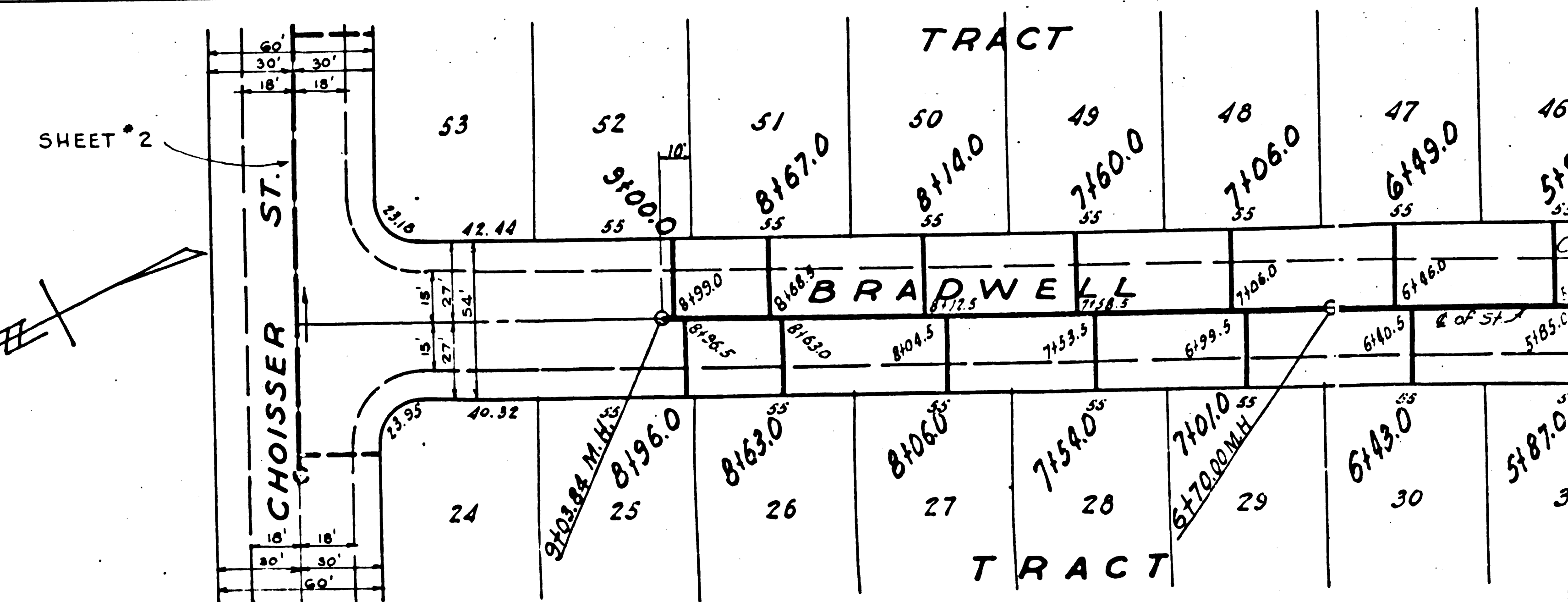
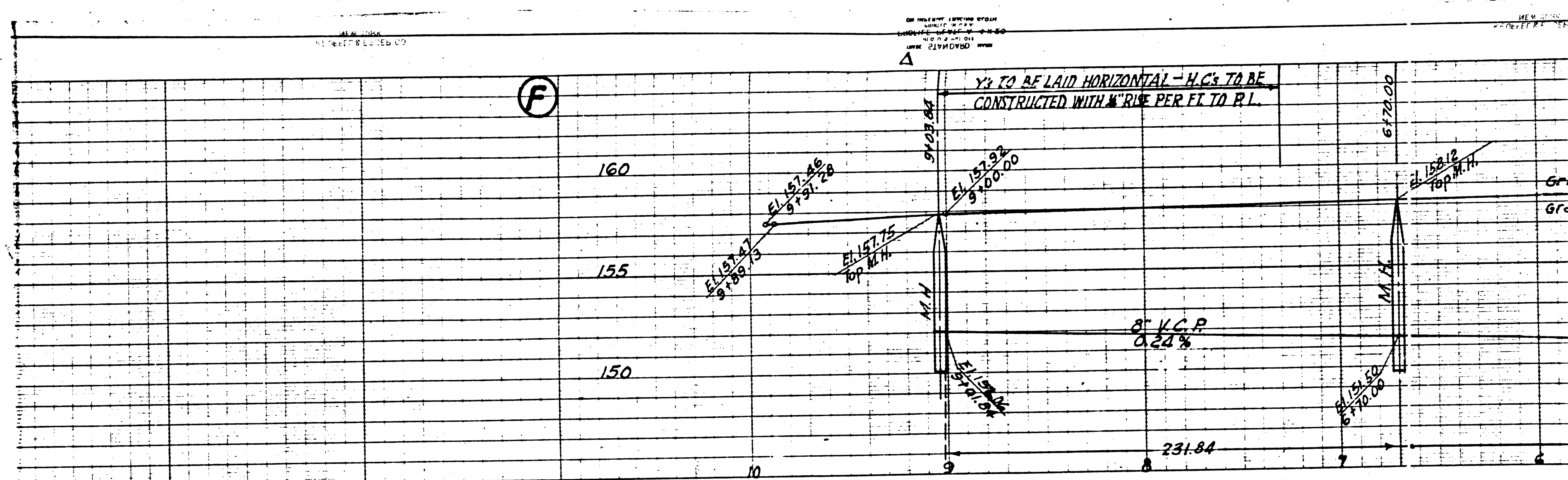
C.I. N° 1137
Sheet 2
D. 2361
Remove Existing
and Reconstruct
in Place

Shown at Right

WASHINGTON
Existing Pavt.
Existing







P.C. 1435
 (3)
 (6)