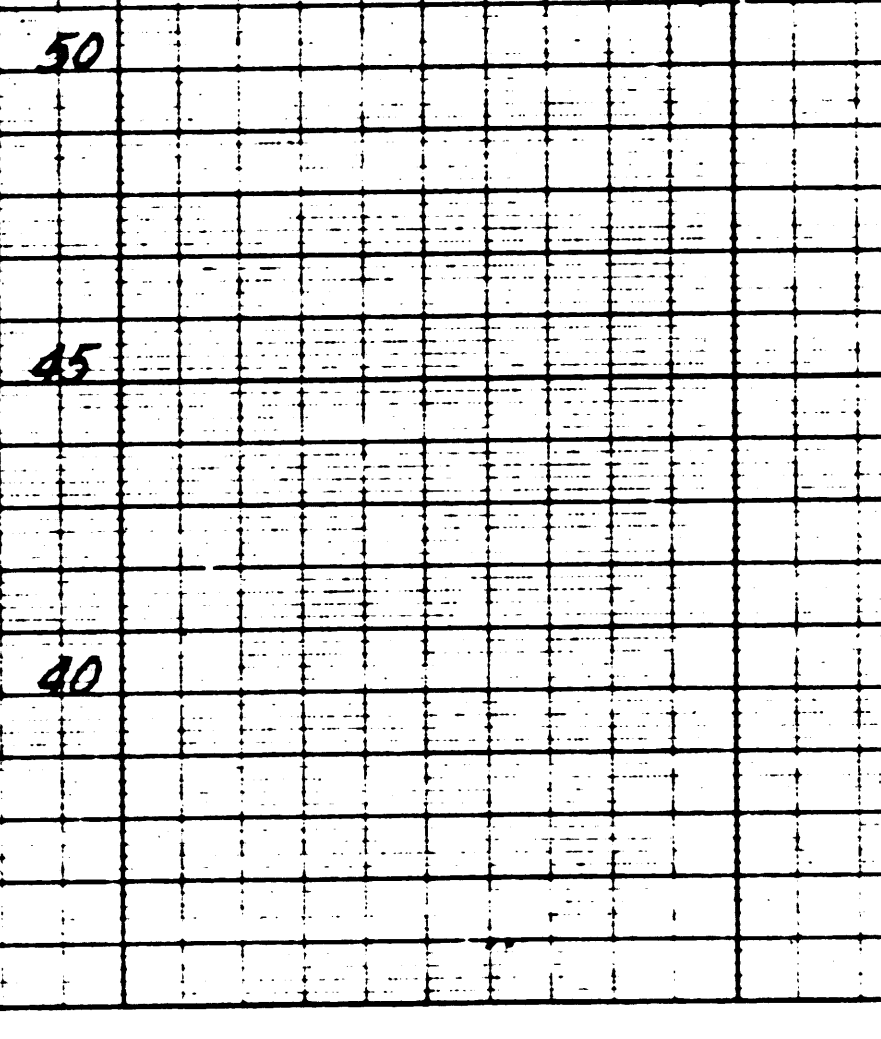


BM 5182-55, El. 47.8
 BullHorn Blvd. at
 2.4 11.27 E. 4 BullHorn
 10/17/50



- NOTE: THE REPRESENTATIVE OF THE COUNTY ENGINEER WILL SURVEY OR RE-SURVEY ANY PORTION OF THE WORK. THE OWNER OR HIS AUTHORIZED REPRESENTATIVE SHALL FURNISH THE COUNTY ENGINEER WITH GRADE CHITS AND STATIONS FOR ALL WORK CONNECTIONS AND TIE-BACKS AND SHALL PROVIDE STAKES FOR THEM AT THEIR PROPER LOCATIONS WITH STATIONING PLAINLY MARKED. ANY CHANGE OF LOCATION SHALL BE REQUESTED IN WRITING BY THE OWNER OR HIS REPRESENTATIVE. NO REVISIONS SHALL BE MADE IN THESE PLANS WITHOUT APPROVAL OF THE COUNTY ENGINEER.
- USE STANDARD WIREHOLE FRAMES AND COVERS, 24" DIA.
 - USE STANDARD STRENGTH PIPE EXCEPT AS NOTED.
 - USE STANDARD MANHOLES FOR ALL WIREHOLE PIPE JOINTS.
 - ENCASE ALL MANHOLES AND WIREHOLE JOINTS WITH A COUNTY ROAD DEPT. REQUIREMENTS IN ACCORDANCE WITH PERMIT.
 - ENCASE FOUR FEET OF SEWER AT EACH END OF EACH MANHOLE WITH 12" CONCRETE.
 - HOUSE CONNECTIONS TO BE CONSTRUCTED WITH INVERT AT PROPERTY LINE 15 FEET BELOW CURB GRADE.
 - ALL STRUCTURES SHALL BE BRICK SEWER STRUCTURES, 24" DIA.
 - PROVIDE STAKES ON THE PROPERTY LINE OR PROPERTY CORNER THROUGH 90-DEGREE ANGLES TO THE SEWER LINE AT THE CENTER LINE OF EACH MANHOLE.

PROFILE, GRADE AND ALIGNMENT OF
SANITARY SEWERS
 TO BE CONSTRUCTED IN

FIDLER AVE.
 BETWEEN DEL AMO BLVD. AND SANDWOOD STREET.

PREMIER AVE.
 BETWEEN DEL AMO BLVD. AND SANDWOOD STREET.

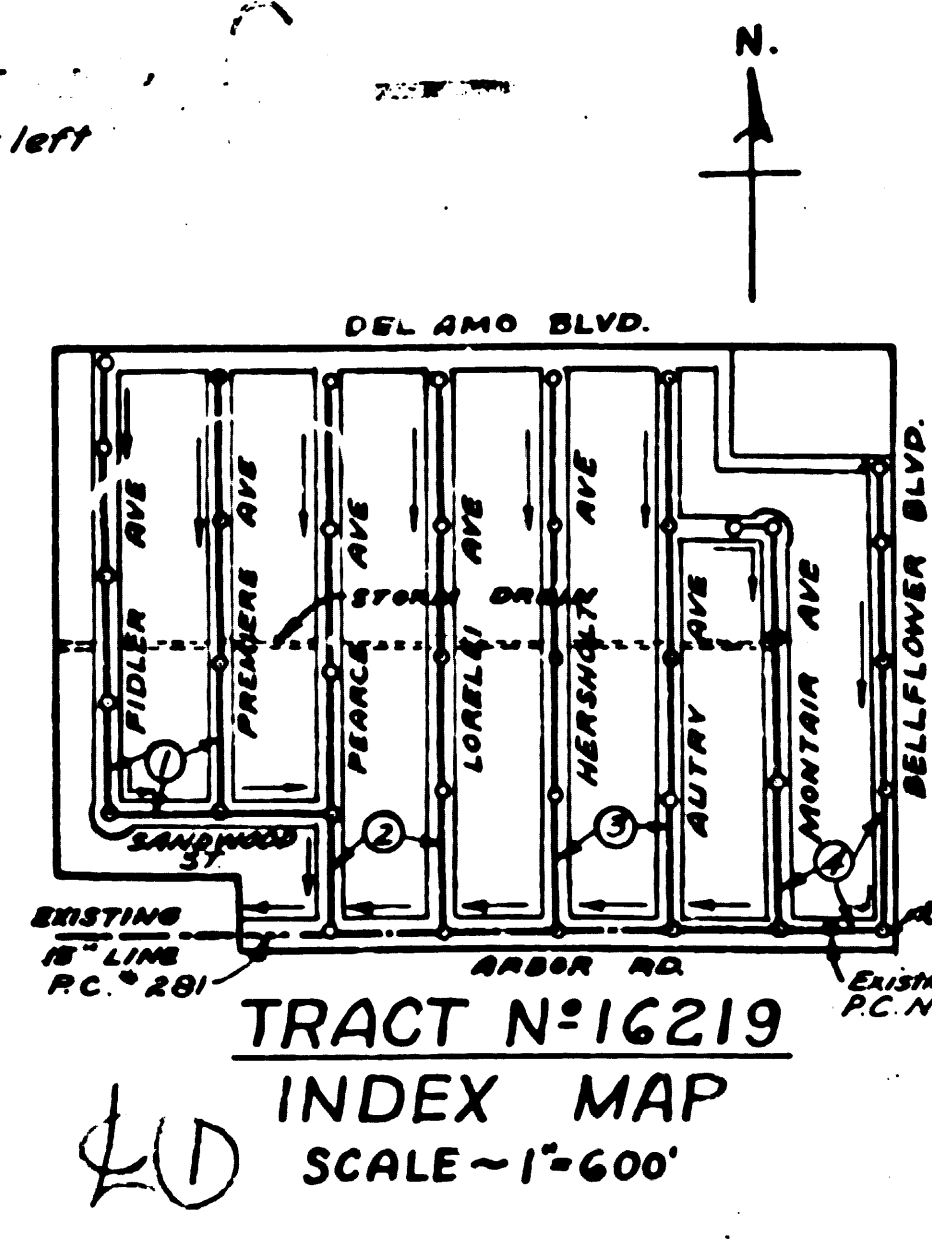
SANDWOOD ST.
 BETWEEN FIDLER AVE. AND PEARCE AVE.
 IN TRACT NO. 16219

PRIVATE CONTRACT NO. 1238
 W.S. 31
 SHEET 1 OF 4 SHEETS

SCALE: VERT. 1" = 4'
 HOR. 1" = 40'

APRIL 1950
 PREPARED IN THE OFFICES OF
ENGINEERING SERVICE CORPORATION

BY: *E. P. Noeig*
 REG. C. E. NO. 3472



ENGINEERING SERVICE CORPORATION
 5977-9 9-2-3-1 3-29-50

FOR LEGEND SEE PLAN NO. 5A-4

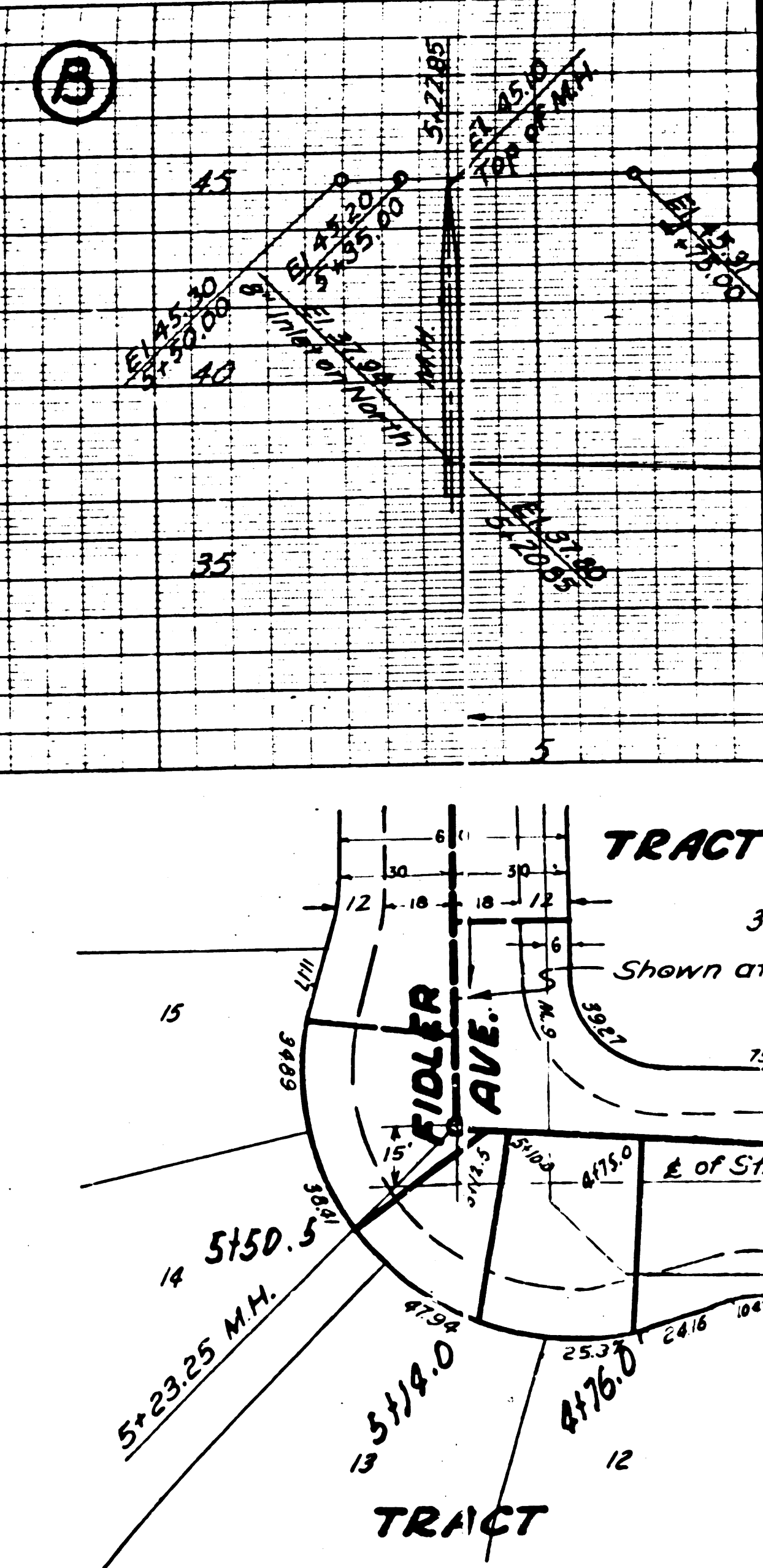
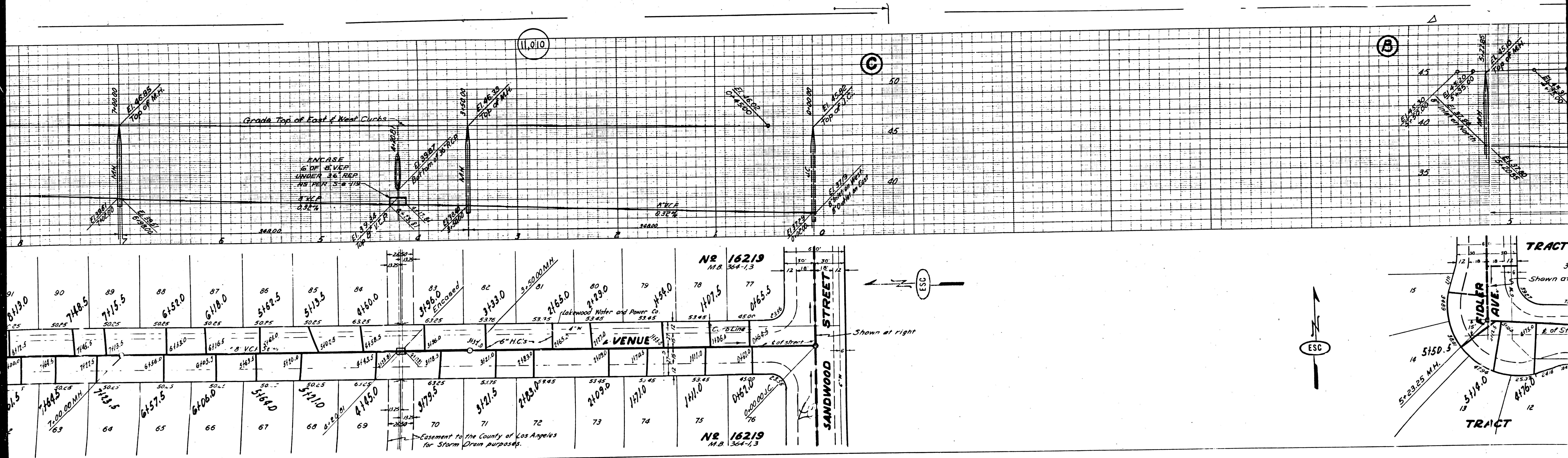
THE PROPERTY TO WHICH THIS IMPROVEMENT IS TO BE CONSTRUCTED IS SHOWN ON PLANS AND PROFILES. THE LOCATION OF THE SEWER LINE IS SHOWN BY A DASHED LINE. THE LOCATION OF THE SEWER LINE SHALL BE ESTABLISHED BY THE COUNTY ENGINEER. THE LOCATION OF THE SEWER LINE SHALL BE ESTABLISHED BY THE COUNTY ENGINEER. THE LOCATION OF THE SEWER LINE SHALL BE ESTABLISHED BY THE COUNTY ENGINEER.

APPROVED: *Allegory*
 CHIEF DEPUTY COUNTY ENGINEER

APPROVED: *C. J. Miller*
 ASSESSOR OF THE COUNTY OF LOS ANGELES

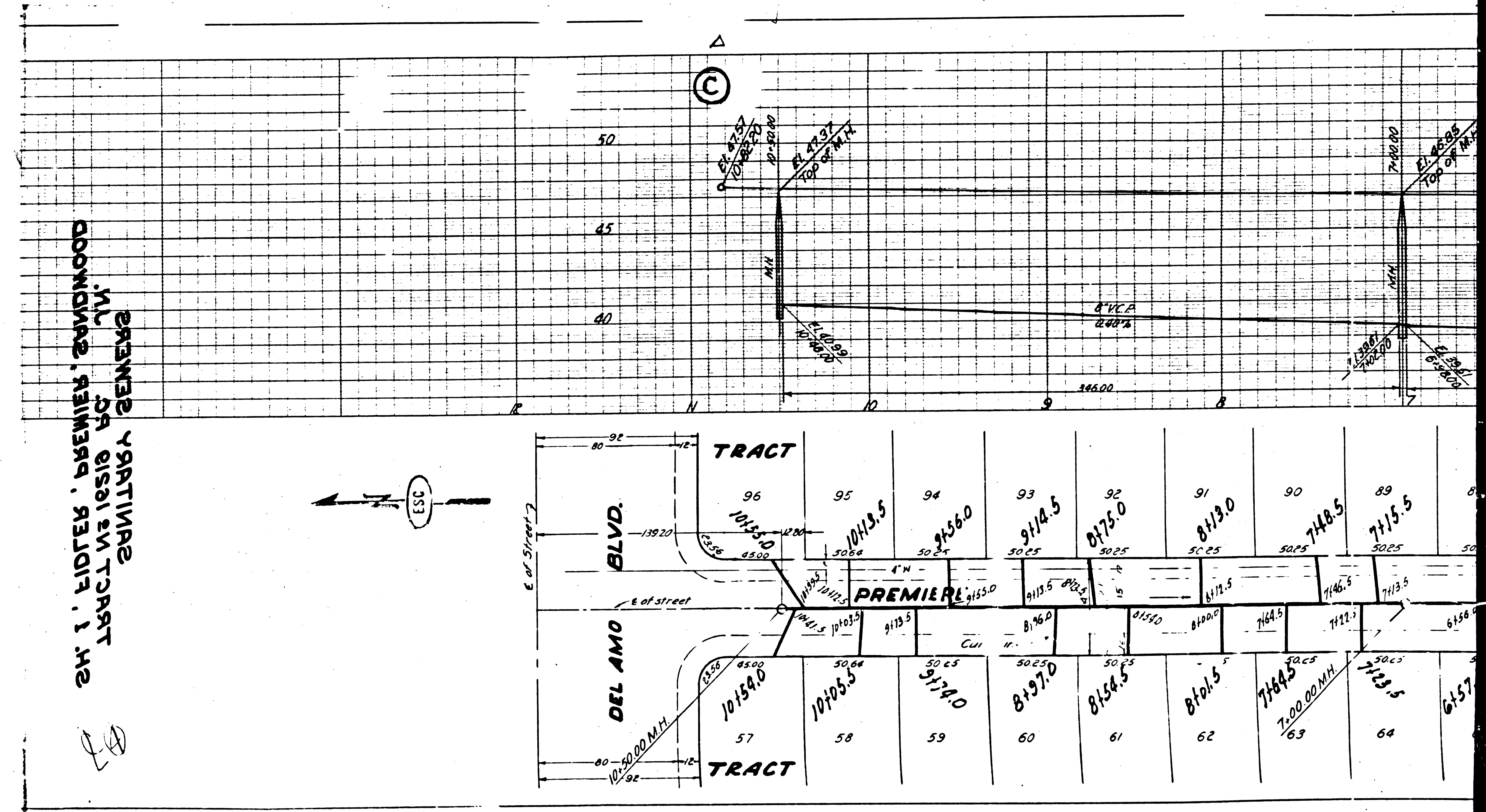
CHECKED: *H. L. Swales*
 OFFICE OF COUNTY ENGINEER, REG. C. E. NO. 642

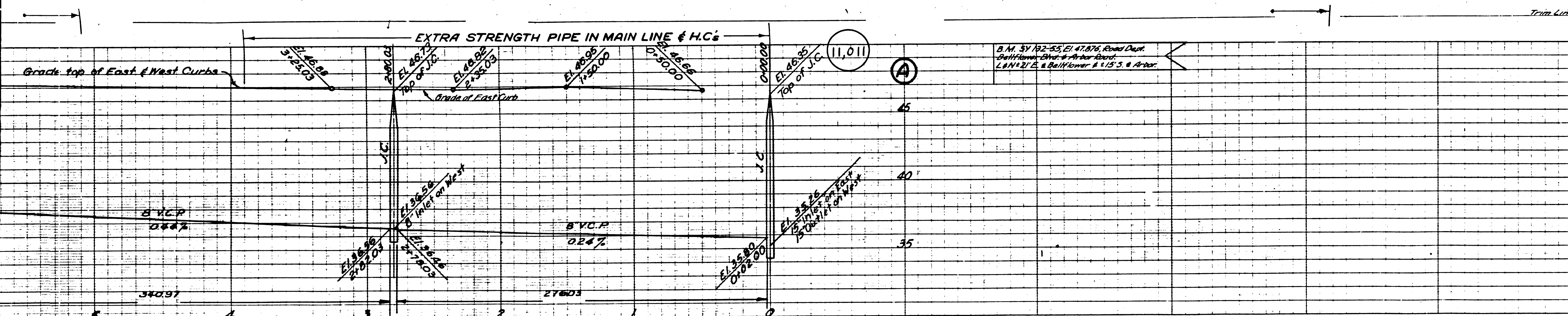
APR 12 1950



PREMIER VARTINAS
MIL CH 0101 EN TRACT
DOWNWARD, RAINIER, RALPH, I, J, K

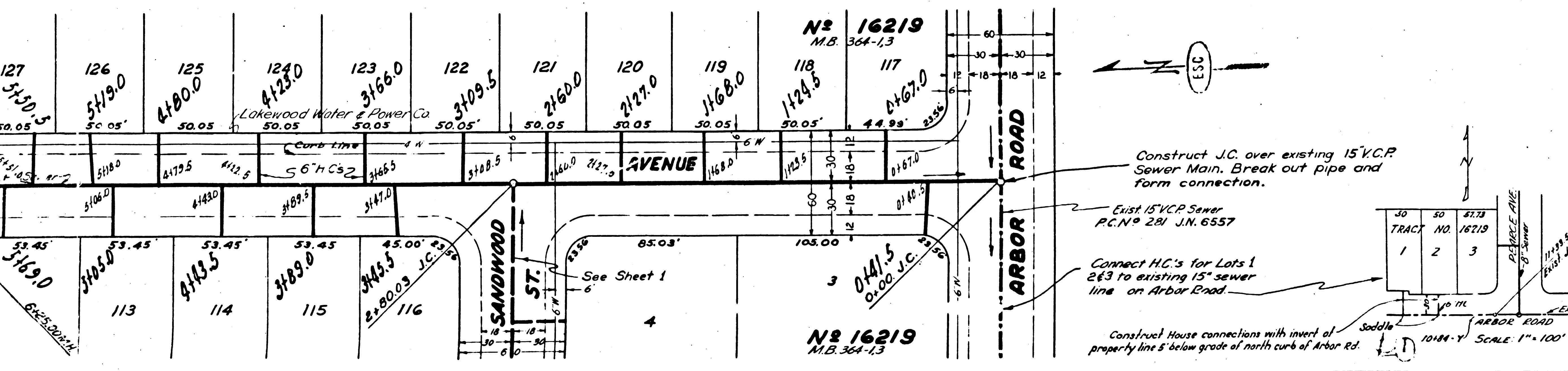
LD





PROFILE GRADE AND ALIGNMENT OF
SANITARY SEWERS
 TO BE CONSTRUCTED IN
PEARCE AVE
 BETWEEN DEL AMO BLVD AND ARBOR ROAD
LORELEI AVE
 BETWEEN DEL AMO BLVD AND ARBOR ROAD
 IN TRACT N 16219

PRIVATE CONTRACT NO. 1238
 W.S. 31
SHEET 2 OF 4 SHEETS
 VERT. 1" = 4'
 HOR. 1" = 40'
 APRIL 1950
 PREPARED IN THE OFFICES OF
ENGINEERING SERVICE CORPORATION



ENGINEERING SERVICE CORPORATION
 1127 W. WASHINGTON BLVD
 LOS ANGELES 13, CALIF.

NO.	DATE	BY

TRACED BY: M.E.H.
 DESIGNED BY: E.K.
 CHECKED BY: M.S.
 SUBMITTED: 4/15/50

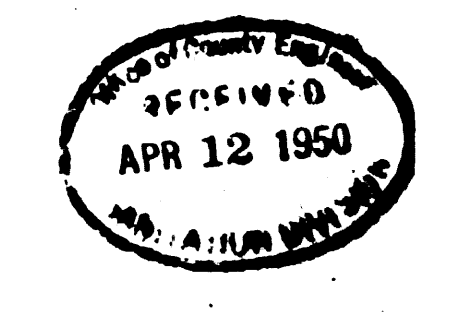
USE STRUCTURES OK'D
 DATE: 3-29-50
 SCALE: 1" = 40'

FOR LEGEND
 SEE PLAN NO. 5-8-44
 FOR CONSTRUCTION NOTES SEE SHEET 1

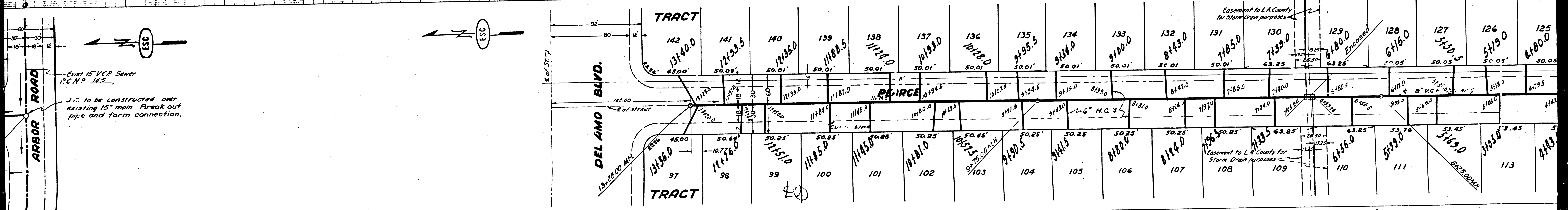
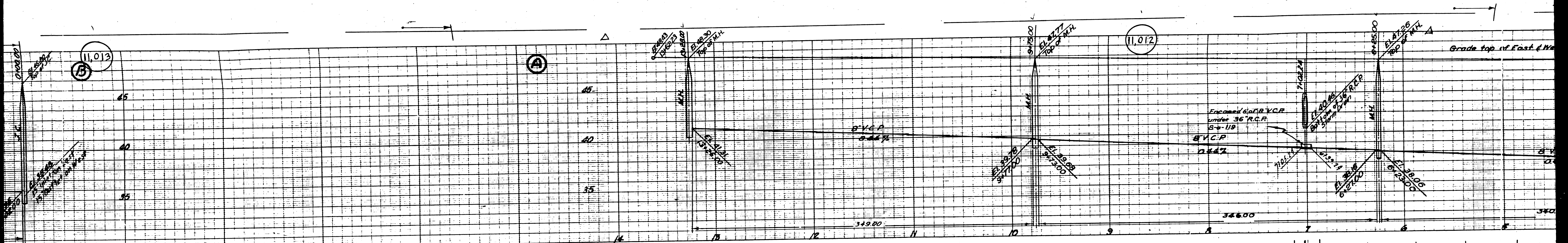
COUNTY OF LOS ANGELES, CALIFORNIA

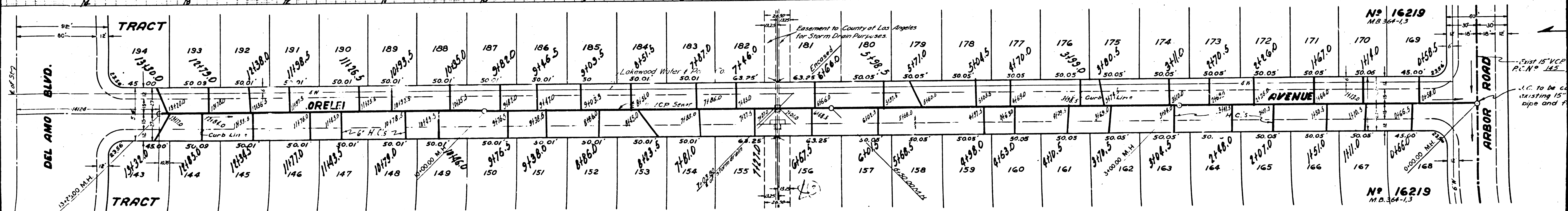
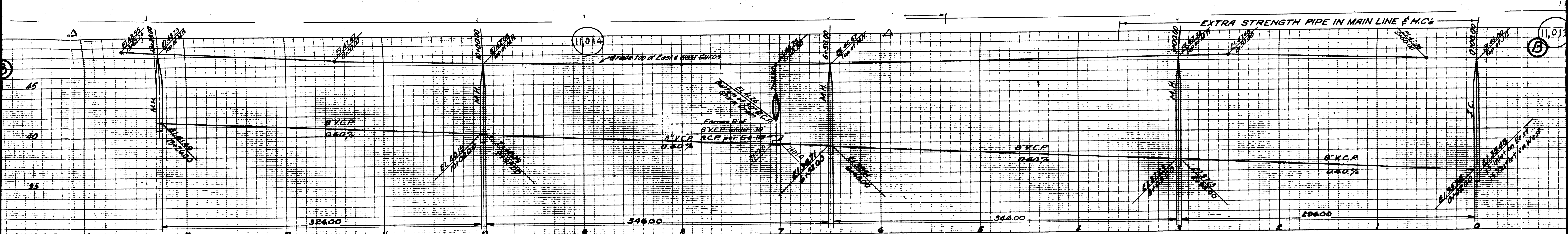
APPROVED: *[Signature]*
 CHIEF, DEPUTY
 APPROVED: *[Signature]*
 ASST. CHIEF, DEPUTY

CHECKED: *[Signature]*
 OFFICE OF COUNTY ENGINEER, REG. C.E. NO. 6472



SANITARY SEWERS
 PEARCE AVE
 LORELEI AVE
 N 16219





No 16219
M.B. 364-13

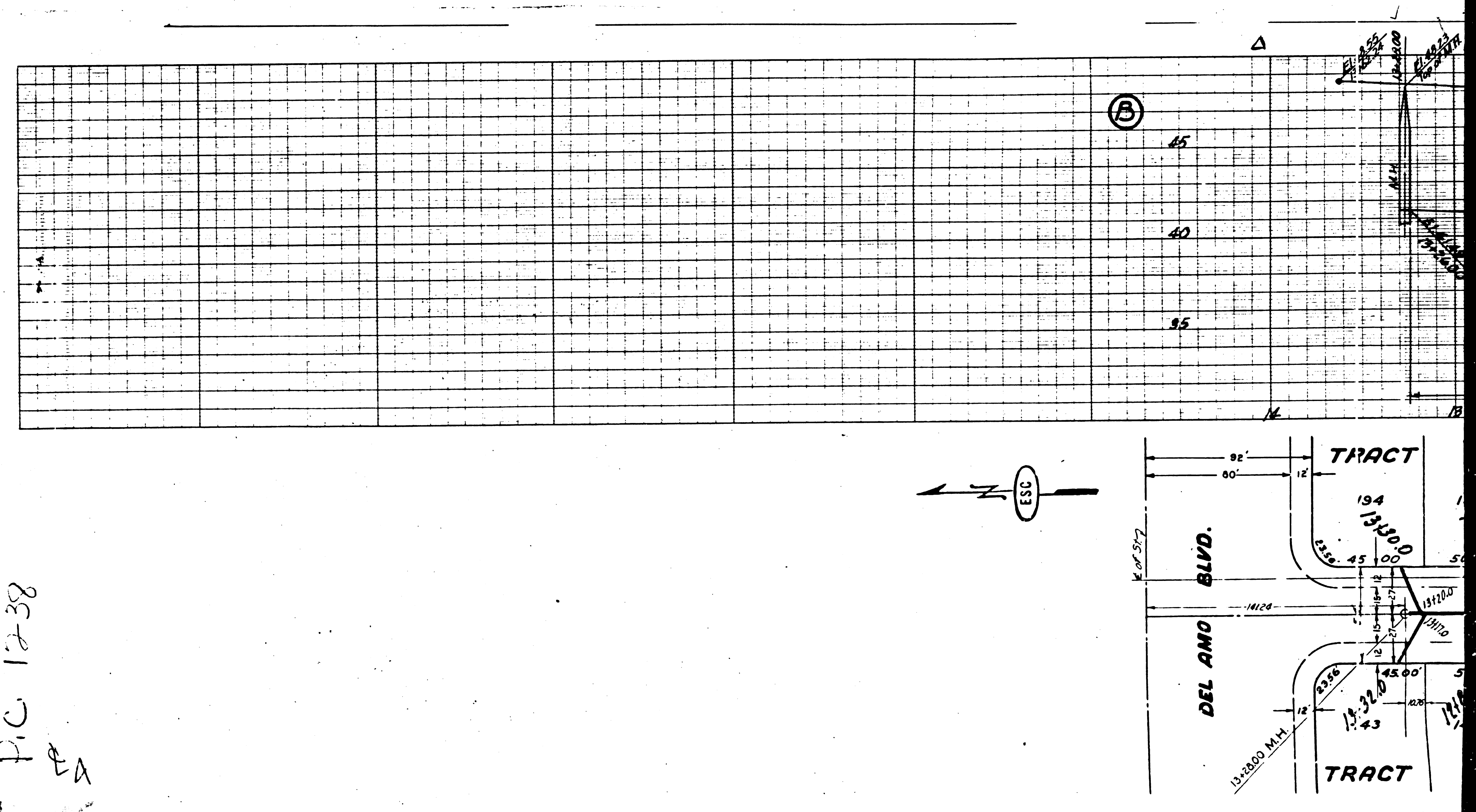
No 16219
M.B. 364-13

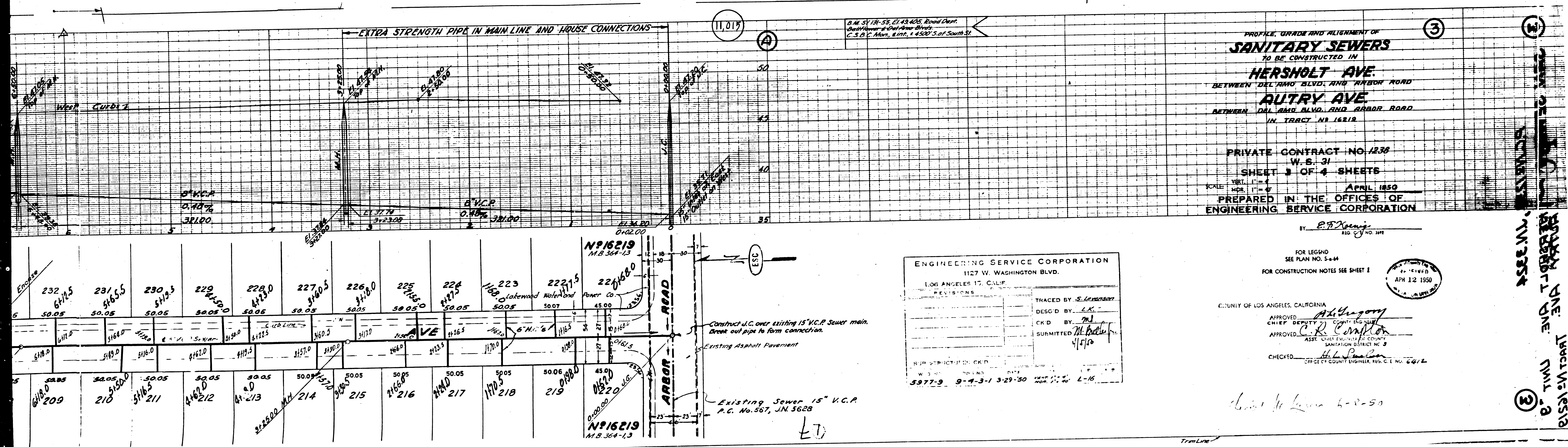
Easement to County of Los Angeles
for Storm Drain Purposes.

Exist 15" V.C.P.
P.C. N° 142

I.C. to be cut
existing 15"
pipe and f

P.C. 1238
A





PROFILE, GRADE AND ALIGNMENT OF
SANITARY SEWERS
 TO BE CONSTRUCTED IN
HERSHOLT AVE.
 BETWEEN DEL AMO BLVD. AND ARBOR ROAD
RAUTRY AVE.
 BETWEEN DEL AMO BLVD. AND ARBOR ROAD
 IN TRACT NO. 16212

PRIVATE CONTRACT NO. 1238
 W.S. 31
 SHEET 3 OF 4 SHEETS
 SCALE: VERT. 1" = 4'
 HOR. 1" = 40'
 APRIL 1950
 PREPARED IN THE OFFICES OF
ENGINEERING SERVICE CORPORATION

BY *E.F. Koenig*
 REG. NO. 397

ENGINEERING SERVICE CORPORATION
 1127 W. WASHINGTON BLVD.
 LOS ANGELES 17, CALIF.
 REVISIONS

TRACED BY <i>S. Lenzman</i>
DESIG'D BY <i>L.K.</i>
CHK'D BY <i>M.J.</i>
SUBMITTED <i>M. Keller</i> 4/1/50

SUP. STRUCTURE: CK'D
 W. 3-27-50
 5377-9 9-4-3-1 3-29-50

FOR LEGEND
 SEE PLAN NO. 5-44
 FOR CONSTRUCTION NOTES SEE SHEET 1

COUNTY OF LOS ANGELES, CALIFORNIA
 APPROVED: *A.H. Grogan*
 CHIEF DEPUTY COUNTY ENGINEER
 APPROVED: *C.R. Conklin*
 ASST. CHIEF ENGINEER OF COUNTY
 SANITATION DISTRICT NO. 3
 CHECKED: *H.L. Paulson*
 OFFICE COUNTY ENGINEER, REG. C.E. NO. 6412

APR 12 1950

HERSHOLT AVE
 RAUTRY AVE
 ARBOR ROAD
 TRACT NO. 16212
 SHEET 3 OF 4

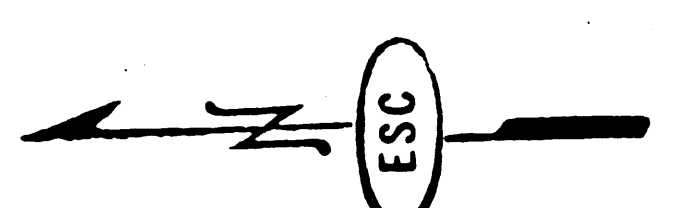
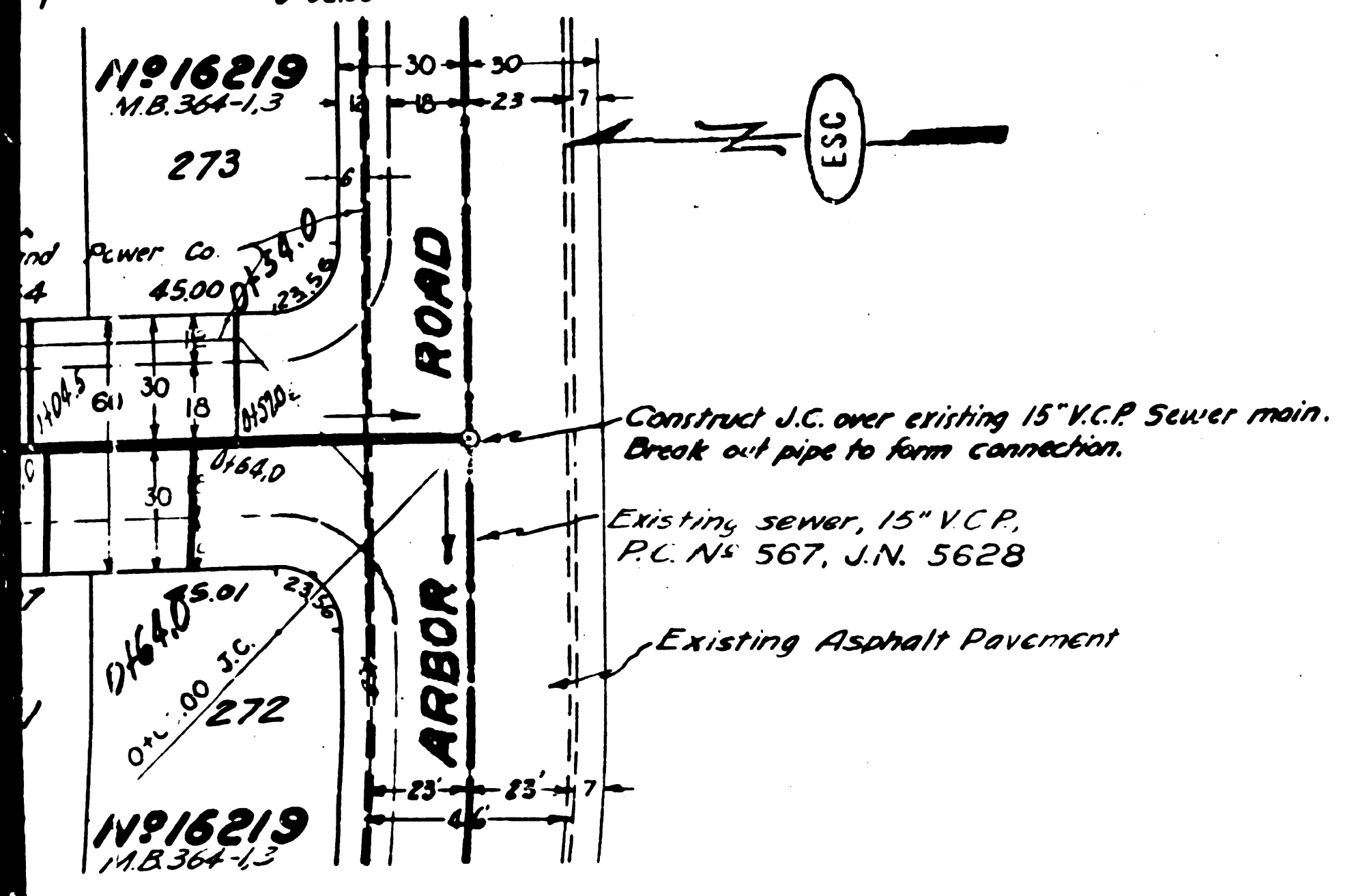
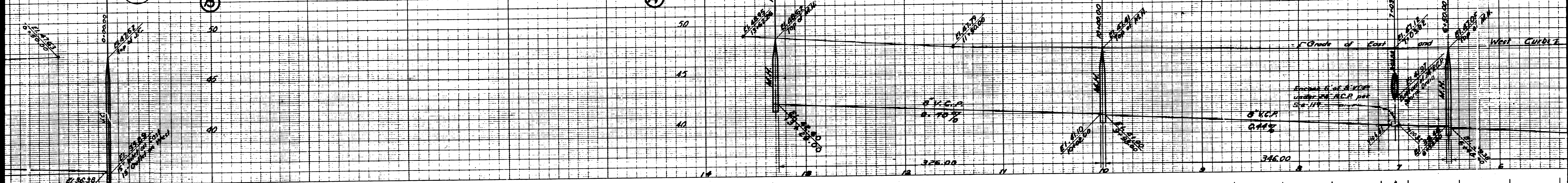
SPEC. IN CONNECTIONS

11,017

(B)

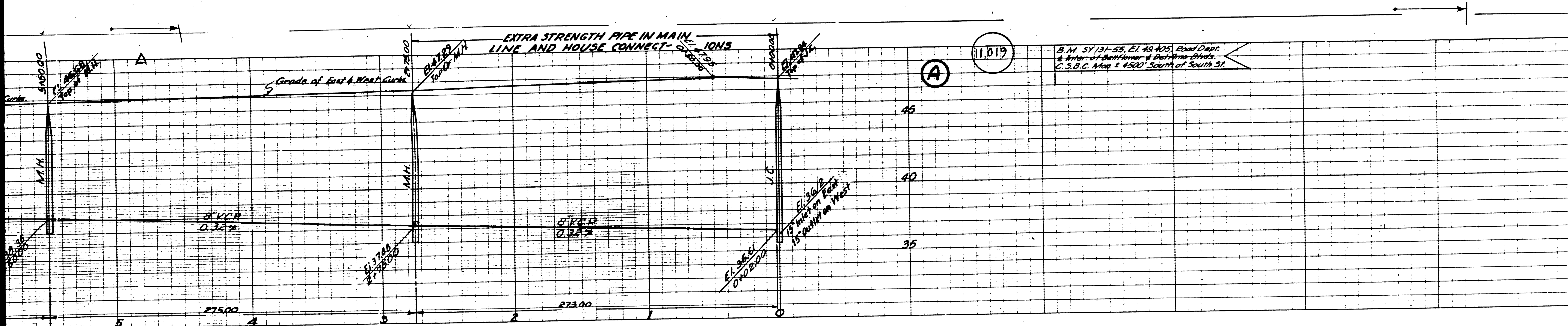
(A)

11,016



TRACT	246	245	244	243	242	241	240	239	238	237	236	235	234	233	232	231
DEL AMO BLVD.	13445.0	12181.5	1971180.0	11871.0	11850.0	11840.0	11830.0	9190.0	9185.0	8195.0	8190.0	7195.0	7190.0	6170.0	6175.0	5165.0
TRACT	195	196	197	198	199	200	201	202	203	204	205	206	207	208	209	210

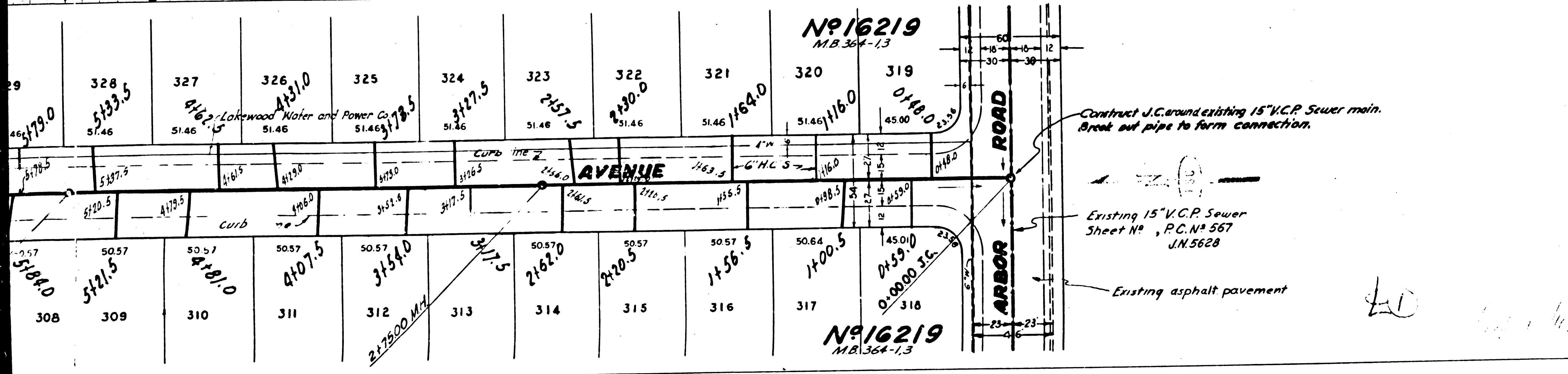
Elevation to L.A. County for Storm Drain purposes



PROFILE GRADE AND ALIGNMENT OF
SANITARY SEWERS
 TO BE CONSTRUCTED IN
BELLFLOWER BLVD.
 BETWEEN DEL AMO BLVD. AND ARBOR ROAD
MONTAIR AVE.
 BETWEEN DEL AMO BLVD. AND ARBOR ROAD
 IN TRACT NO. 16219

PRIVATE CONTRACT NO. 1238
 W. S. 31
SHEET 4 OF 4 SHEETS
 SCALE: VERT. 1" = 4'
 HOR. 1" = 40'
 APRIL 1950
 PREPARED IN THE OFFICES OF
ENGINEERING SERVICE CORPORATION

BY: *E.P. Keeney*
 REG. C.E. NO. 385



ENGINEERING SERVICE CORPORATION
 1127 W. WASHINGTON BLVD.
 LOS ANGELES 15, CALIF.

REVISIONS	TRACED BY <i>S. Leveaux</i>
	DECKED BY <i>L.K.</i>
	CK'D BY <i>ms</i>
	SUBMITTED <i>4/15/50</i>

SUPERSTRUCTURES CHECKED BY _____
 W. O. NO. 5977-9 DWG. NO. 9-5-3-1 DATE 3-29-50 SCALE VERT. 1" = 4' HOR. 1" = 40'

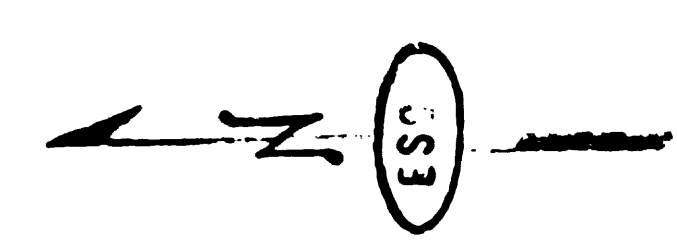
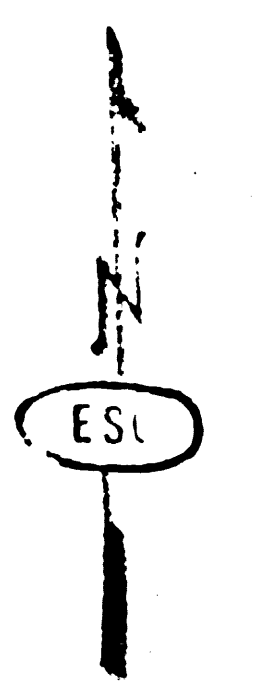
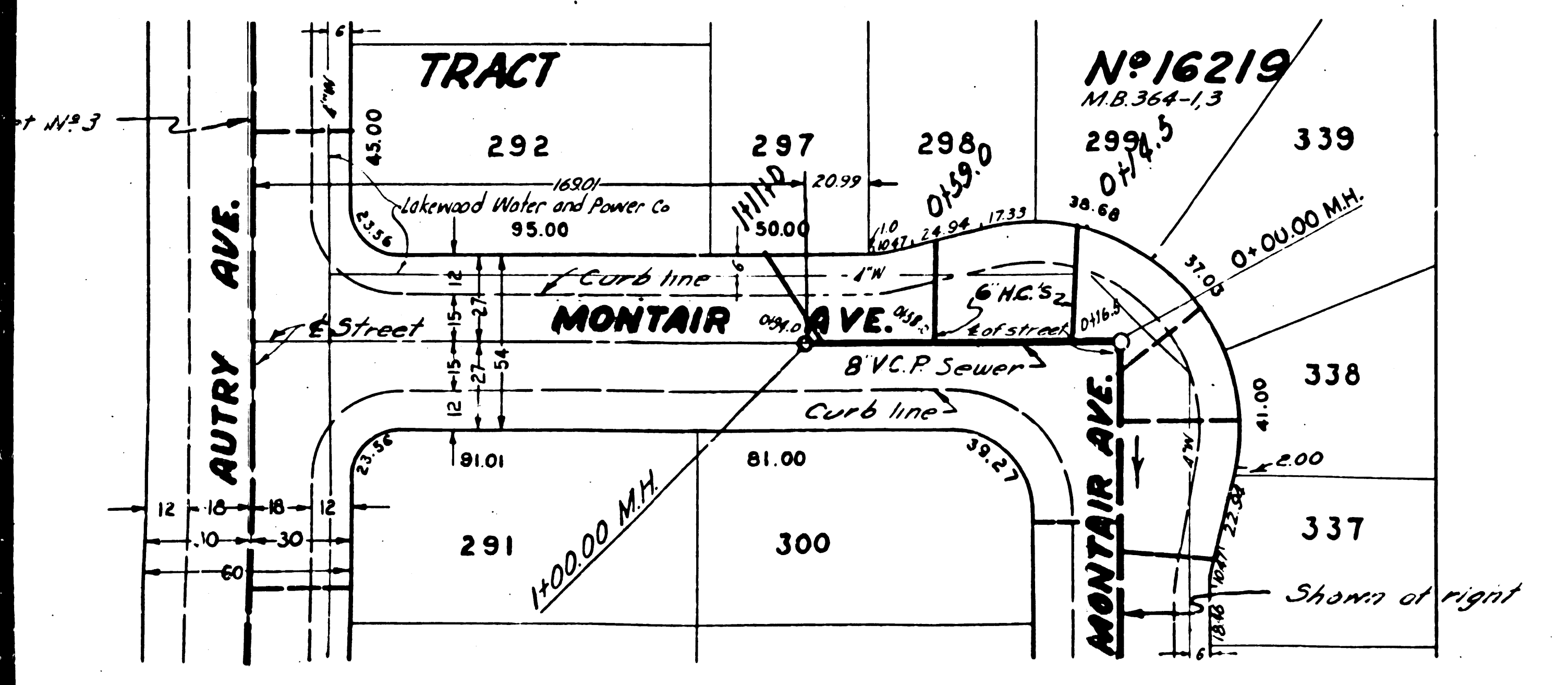
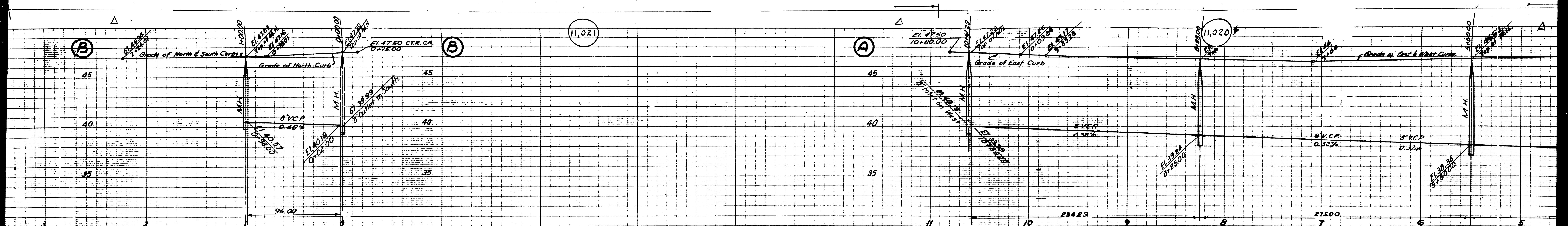
FOR LEGEND SEE PLAN NO. S-44
 FOR CONSTRUCTION NOTES SEE SHEET 1

COUNTY OF LOS ANGELES, CALIFORNIA
 APPROVED: *W. S. Keeney*
 CHIEF DEPUTY COUNTY ENGINEER
 APPROVED: *C. K. ...*
 ASSESSOR
 CHECKED: *H. L. ...*
 OFFICE OF COUNTY ENGINEER AND DISTRICT ENGINEER

APR 12 1950

LD *6-8-50*

SANITARY SEWERS BELLFLOWER BLVD. MONTAIR AVE.



Shown at left
463

