

11,226

G.M. ST 132.55 EL. 47.976 Rd. Dept.
Bellflower Blvd. & Arbor Rd.
G.M. 2'-6" & Bellflower & 15'-5" & Arbor Rd.

11. REPRESENTATIVE OF THE COUNTY ENGINEER WILL SURVEY OR LAY OUT ANY PORTION OF THE WORK.
12. THE OWNER OR HIS AUTHORIZED REPRESENTATIVE SHALL FURNISH THE COUNTY ENGINEER WITH GRADE SHEETS AND STATIONS FOR ALL HOUSE CONNECTIONS AND Y BRANCHES AND SHALL PROVIDE STAKES FOR THEM AT THEIR PROPER LOCATIONS WITH STATIONING BURNED MARSHED. ANY CHANGE OF LOCATION SHALL BE REQUESTED IN WRITING BY THE OWNER OR HIS REPRESENTATIVE.
13. NO REVISIONS SHALL BE MADE IN THESE PLANS WITHOUT APPROVAL OF THE COUNTY ENGINEER.

14. USE STANDARD MANHOLE FRAMES AND COVERS. SIGHT.
15. USE STANDARD DRAINAGE PIPE EXCEPT AS NOTED.
16. USE CEMENT MORTAR FOR ALL VITRIFIED CLAY PIPE JOINTS.
17. SECURITY AND LOT REQUIREMENTS ACCORDING TO PERMIT.
18. ENCASE POINTS OF JUMP AT POINTS OF INTERFERENCE WITH HOUSES.
19. HOUSE CONNECTIONS TO BE CONSTRUCTED WITH INVERT AT PROPER LINE 5 FEET BELOW CURB GRADE.
20. ALL STRUCTURES SHALL BE BRICK SEWER STRUCTURES SAVING.

1

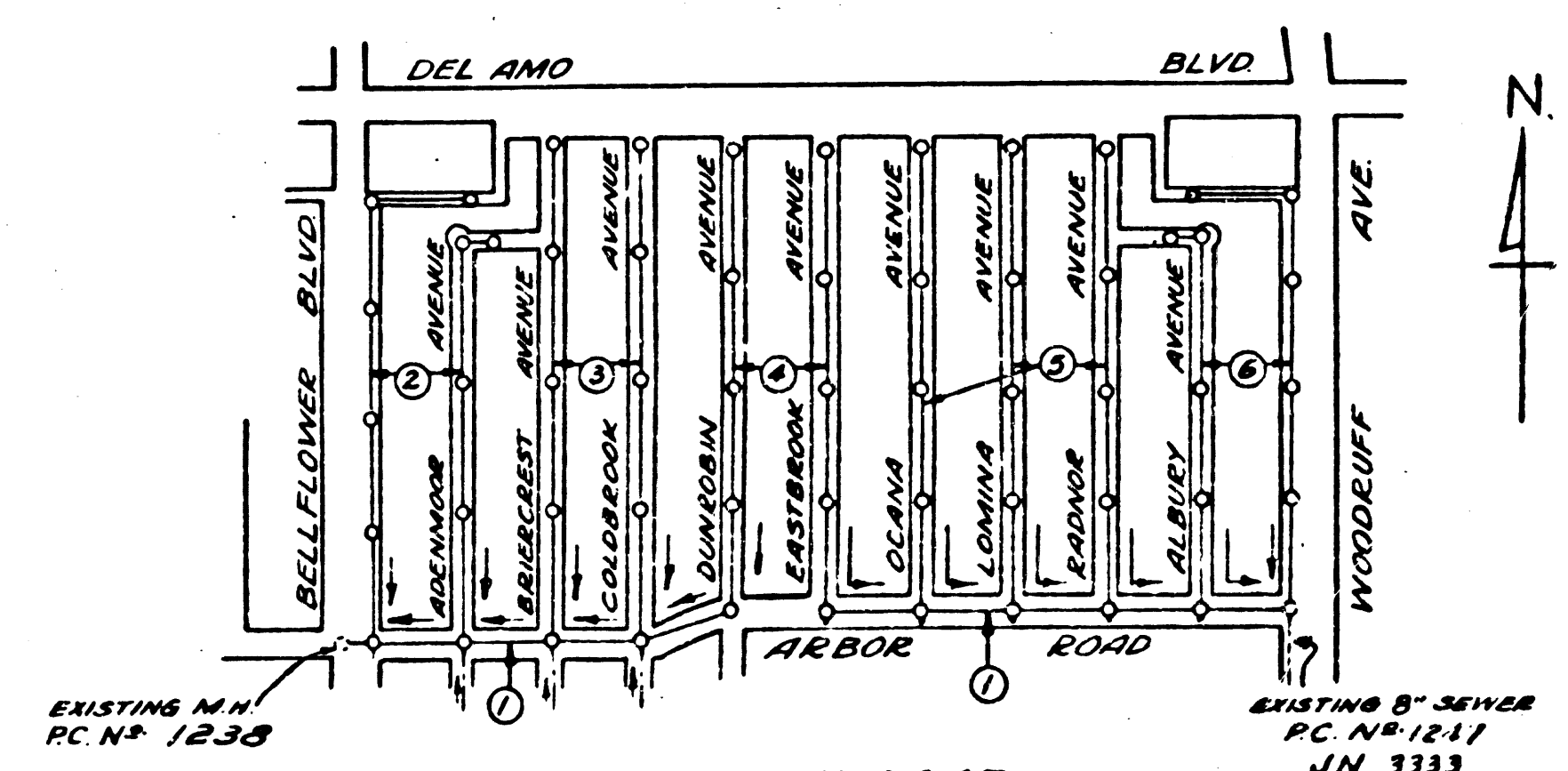
**PROFILE GRADE AND ALIGNMENT OF
SANITARY SEWERS**
TO BE CONSTRUCTED IN
ARBOR ROAD
BETWEEN BELLEFLOWER BLVD.
AND WOODRUFF AVE.
IN TRACT N° 16220

PRIVATE CONTRACT NO. 1241
W.S. 31
SHEET 1 OF 6 SHEETS
APRIL 15, 1950
PREPARED IN THE OFFICES OF
ENGINEERING SERVICE CORPORATION

C.F. Hoemp
E.P. & S. HOEMP

1

SAN. SEWERS & (ARBOR) ROAD
PC 161541 (11/11/33)



ENGINEERING SERVICE CORPORATION
1127 W. WASHINGTON BLVD.
LOS ANGELES 15, CALIF. PR. 7281

Rev. per L.A. Co. Instructions 4-13-50

TRACED BY: *H.S. J.P.*
DESIGNED BY: *B.M.*
CHECKED BY: *M.*
SUBMITTED BY: *M. Butler Jr.*

STRUCTURES: 11 P.
W.D. NO. 5977-10 10-1-3-1 4-15-50 SCALE: 1\"/>

NOTE: GRANT TO ANY OTHER INTERESTS, IS TO BE CONSIDERED AS SUCH IN ALL PLANS AND PROFILES. GRADES AND PROFILES OF EXISTING SEWERS AND OTHER UTILITIES ARE SHOWN BY DASHED LINES AND ARE FOR INFORMATION ONLY. THE GRADES AND PROFILES OF EXISTING SEWERS AND OTHER UTILITIES ARE NOT TO BE TAKEN AS A BASIS FOR ANY DESIGN OR CONSTRUCTION. THE GRADES AND PROFILES OF EXISTING SEWERS AND OTHER UTILITIES ARE NOT TO BE TAKEN AS A BASIS FOR ANY DESIGN OR CONSTRUCTION. THE GRADES AND PROFILES OF EXISTING SEWERS AND OTHER UTILITIES ARE NOT TO BE TAKEN AS A BASIS FOR ANY DESIGN OR CONSTRUCTION.

APPROVED: *C.R. Compton*
C. R. Compton
AST. COUNTY ENGINEER

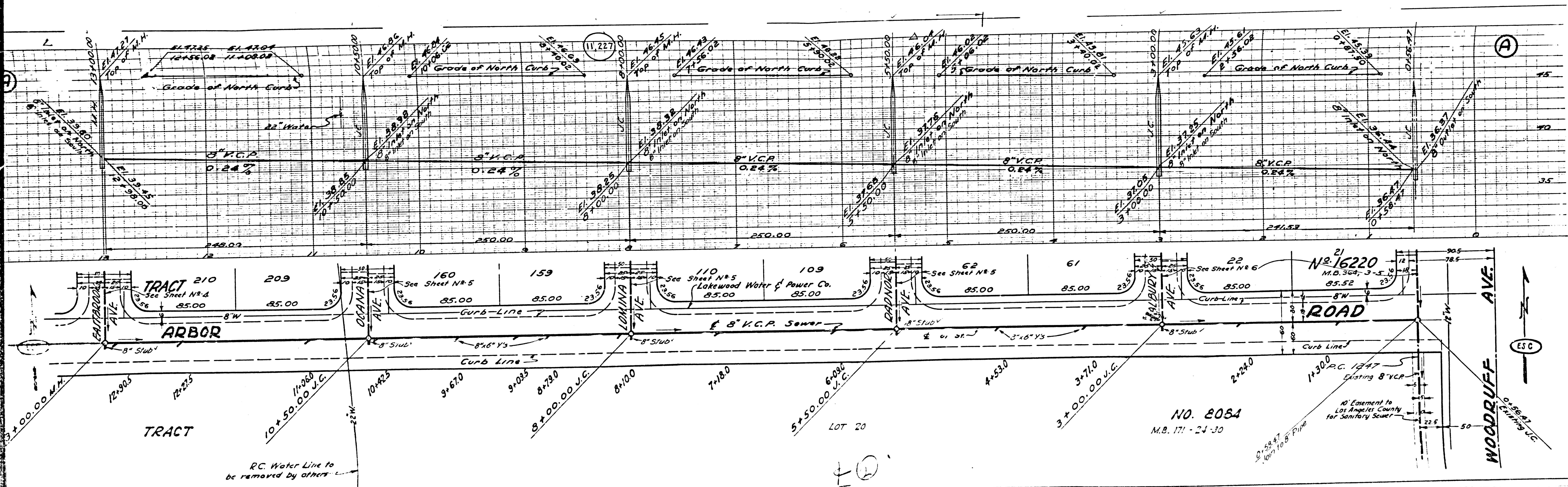
PREPARED BY: *H.S. J.P.*
H. S. J. P.
ENGINEER

SCALE: 1\"/>

checked 10-4-50 *McLaren*

1

MAY 10 1950



TRACT 210
See Sheet No. 4

ARBOR

TRACT

RC Water Line to be removed by others

160
See Sheet No. 5

OCANA AVE

159
85.00

LOMINA AVE

8" V.C.P. Sewer

LOT 20

110
See Sheet No. 5
Lakewood Water & Power Co.

109
85.00

8" V.C.P. Sewer

LOT 20

62
See Sheet No. 5

ROAD

NO. 2084
M.B. 171 - 24 - 30

LOT 20

61
85.00

WOODRUFF AVE

10' Easement to Los Angeles County for Sanitary Sewer

LOT 20

22
See Sheet No. 6

NO. 16220
M.B. 347, 3 - 5 - 18

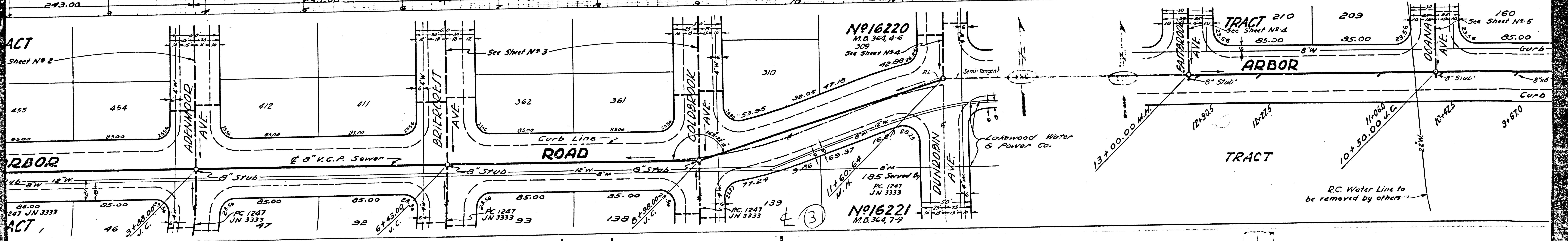
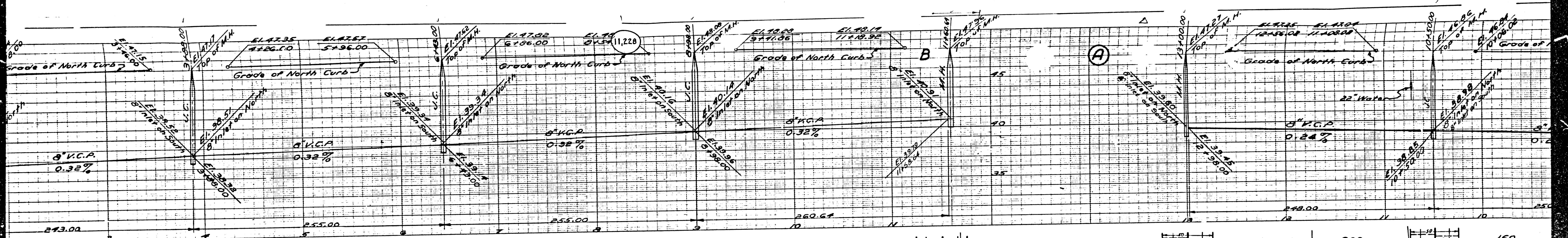
10' Easement to Los Angeles County for Sanitary Sewer

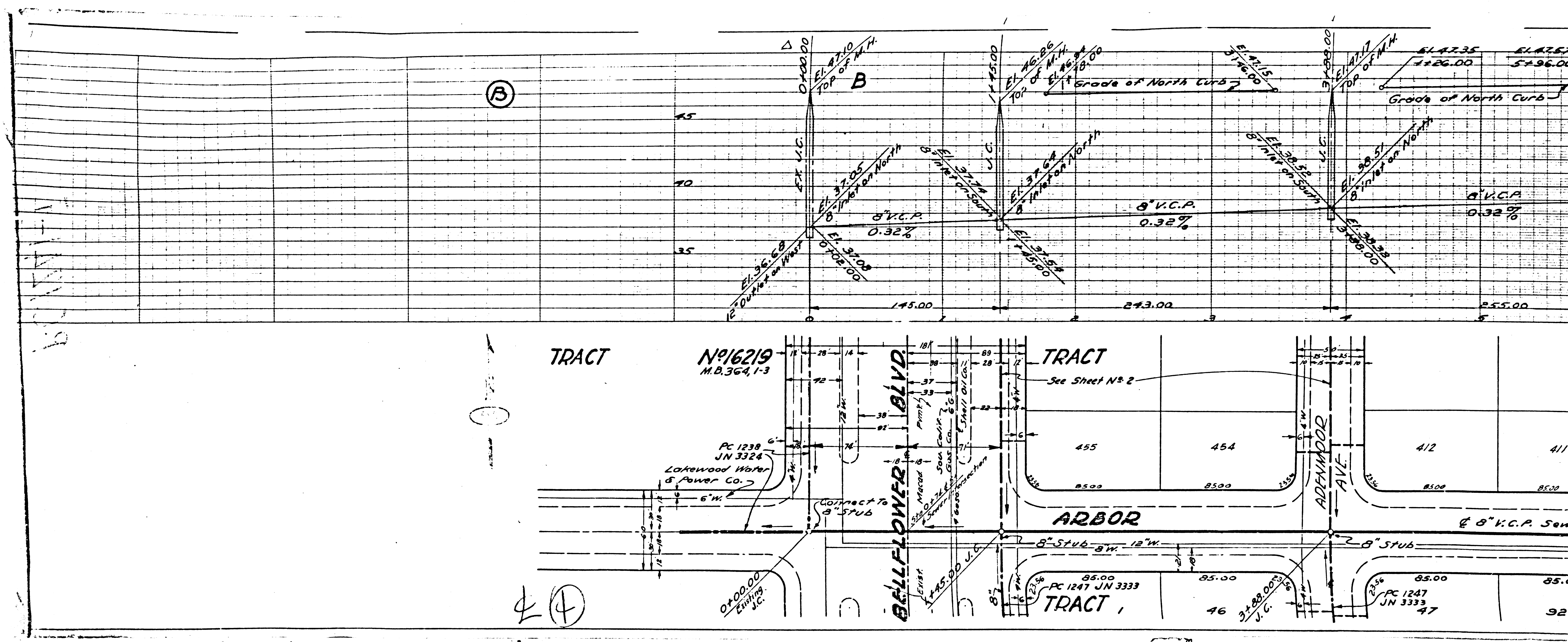
LOT 20

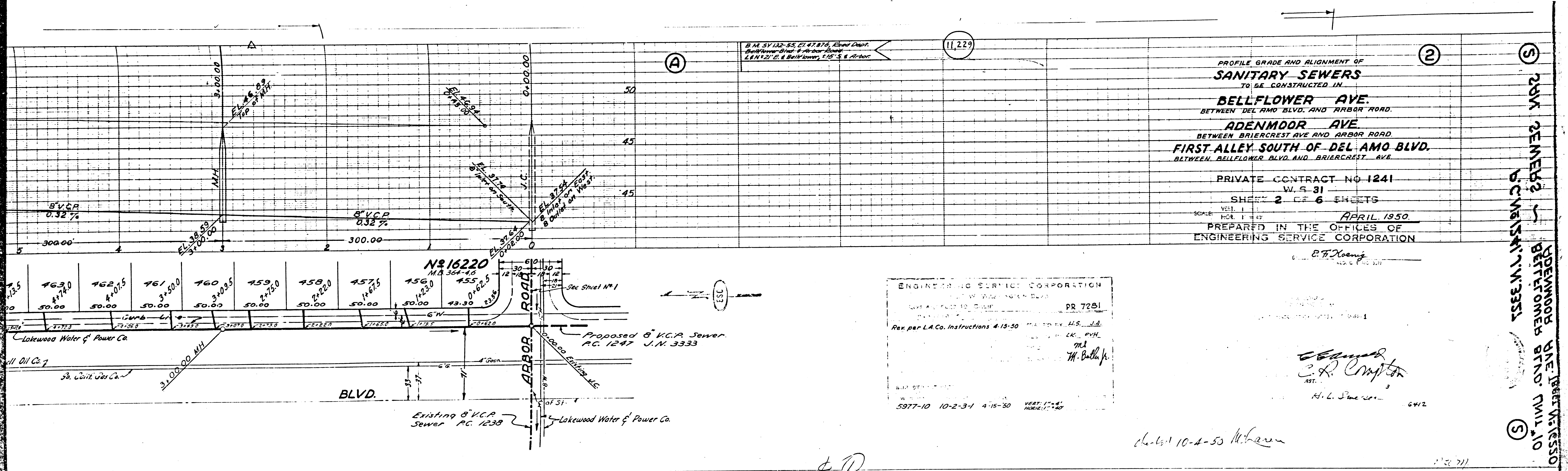
(A)

(E3C)

Checked







B.M. 57132-95, E.I. 47.876, Elev. 49.00
 Bellflower Blvd. & Harbor Road
 L & N 121' E. & Bellflower, 215' S. & Harbor

11,229

PROFILE GRADE AND ALIGNMENT OF
SANITARY SEWERS
 TO BE CONSTRUCTED IN
BELLFLOWER AVE.
 BETWEEN DEL AMO BLVD. AND HARBOR ROAD.
ADENMOOR AVE.
 BETWEEN BRIERCREST AVE AND HARBOR ROAD.
FIRST ALLEY SOUTH OF DEL AMO BLVD.
 BETWEEN BELLFLOWER BLVD. AND BRIERCREST AVE.

PRIVATE CONTRACT NO 1241
 W. S. 31
 SHEET 2 OF 6 SHEETS
 SCALE: VERT. 1" = 4'
 HOR. 1" = 40'
 APRIL, 1950.
 PREPARED IN THE OFFICES OF
 ENGINEERING SERVICE CORPORATION

E. F. Hoeng

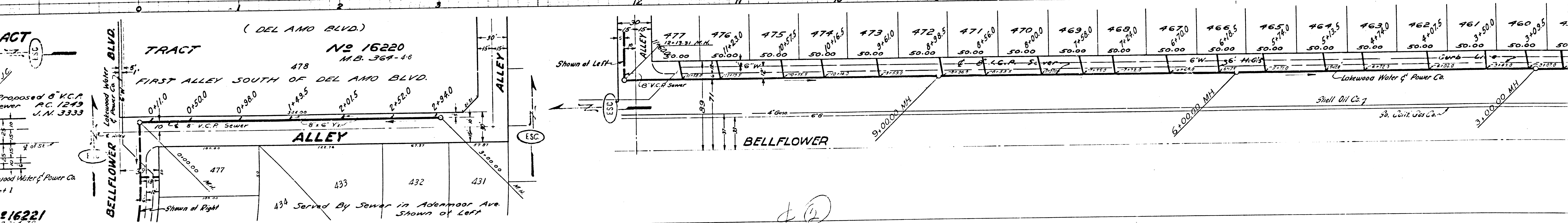
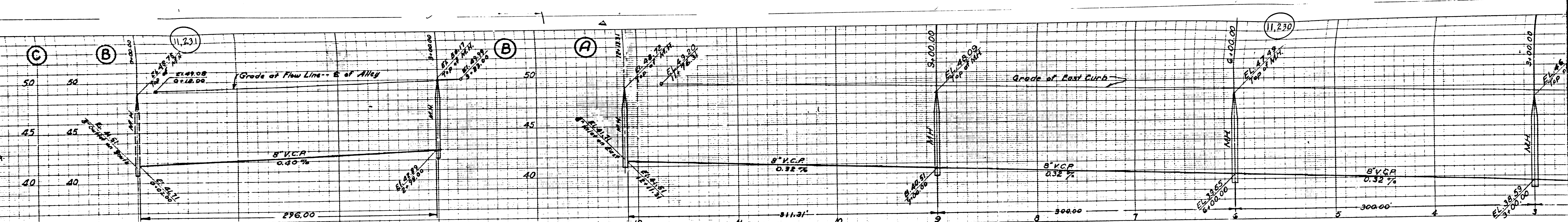
ENGINEERING SERVICE CORPORATION
 111 W. WASHINGTON BLVD.
 LOS ANGELES 12, CALIF.
 Rev. per L.A. Co. Instructions 4-15-50
 H.S. J.A.
 L.K. P.V.H.
 M.L.
 M. Butler, Jr.
 5977-10 10-2-3-1 4-15-50

E. R. Compton
 ASST.

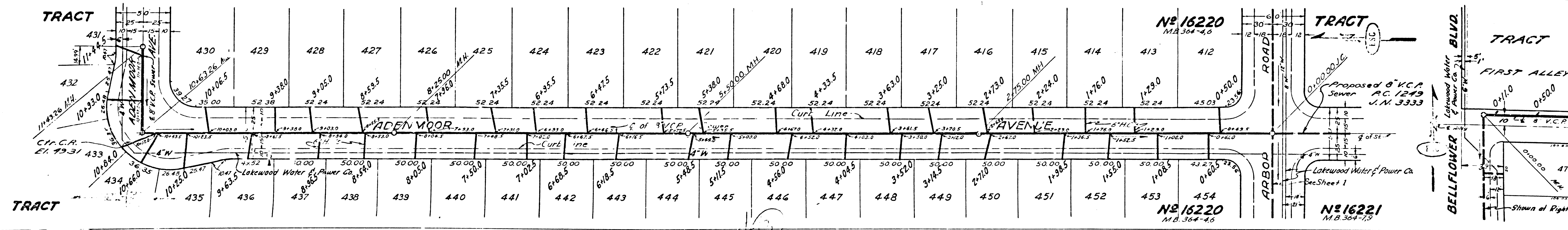
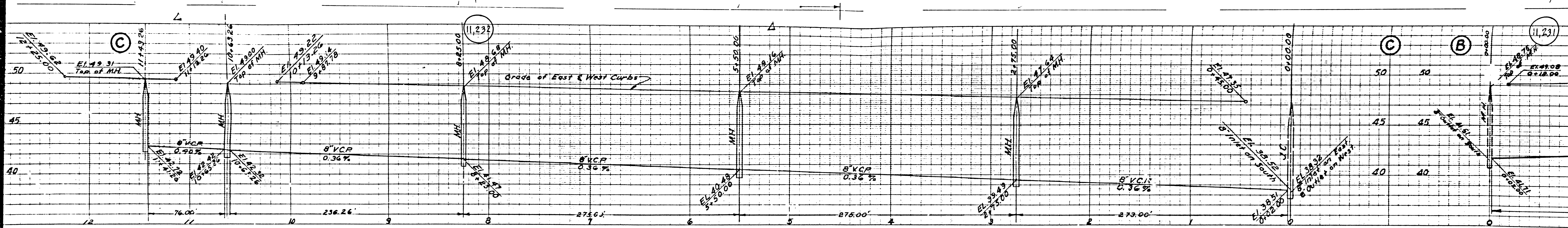
H. L. Smeaton

4-6-50 10-4-50

200' GENERAL
 BELLFLOWER AVE
 ADENMOOR AVE
 BELT VIADUCT
 10
 11
 12
 13
 14
 15
 16
 17
 18
 19
 20
 21
 22
 23
 24
 25
 26
 27
 28
 29
 30
 31
 32
 33
 34
 35
 36
 37
 38
 39
 40
 41
 42
 43
 44
 45
 46
 47
 48
 49
 50



Station	Elevation	Grade	Notes
477	38.50	0.40%	12x12.51 M.H.
476	39.00	0.32%	11x23.0
475	39.50	0.32%	10x17.5
474	40.00	0.32%	10x16.5
473	40.50	0.32%	9x16.0
472	41.00	0.32%	8x15.5
471	41.50	0.32%	8x15.0
470	42.00	0.32%	8x14.0
469	42.50	0.32%	7x13.0
468	43.00	0.32%	7x12.0
467	43.50	0.32%	6x11.0
466	44.00	0.32%	6x10.5
465	44.50	0.32%	5x10.0
464	45.00	0.32%	5x13.5
463	45.50	0.32%	4x14.0
462	46.00	0.32%	4x17.5
461	46.50	0.32%	3x15.0
460	47.00	0.32%	3x19.5



PROFILE GRADE AND ALIGNMENT OF
SANITARY SEWERS
TO BE CONSTRUCTED IN

BRIERCREST AVE.
BETWEEN DEL AMO BLVD. AND ARBOR ROAD
COLDBROOK AVE.
BETWEEN DEL AMO BLVD. AND ARBOR ROAD
IN TRACT N° 16220.

PRIVATE CONTRACT NO. 1241
W.S. 31
SHEET 3 OF 6 SHEETS
APRIL 1950
PREPARED IN THE OFFICES OF
ENGINEERING SERVICE CORPORATION

E. F. Koehn

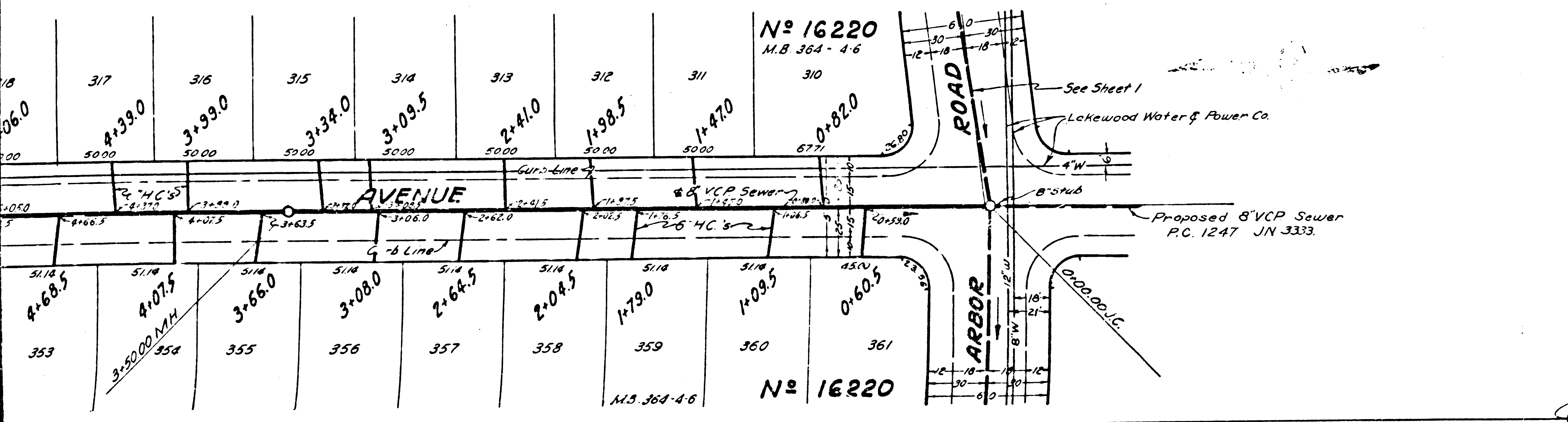
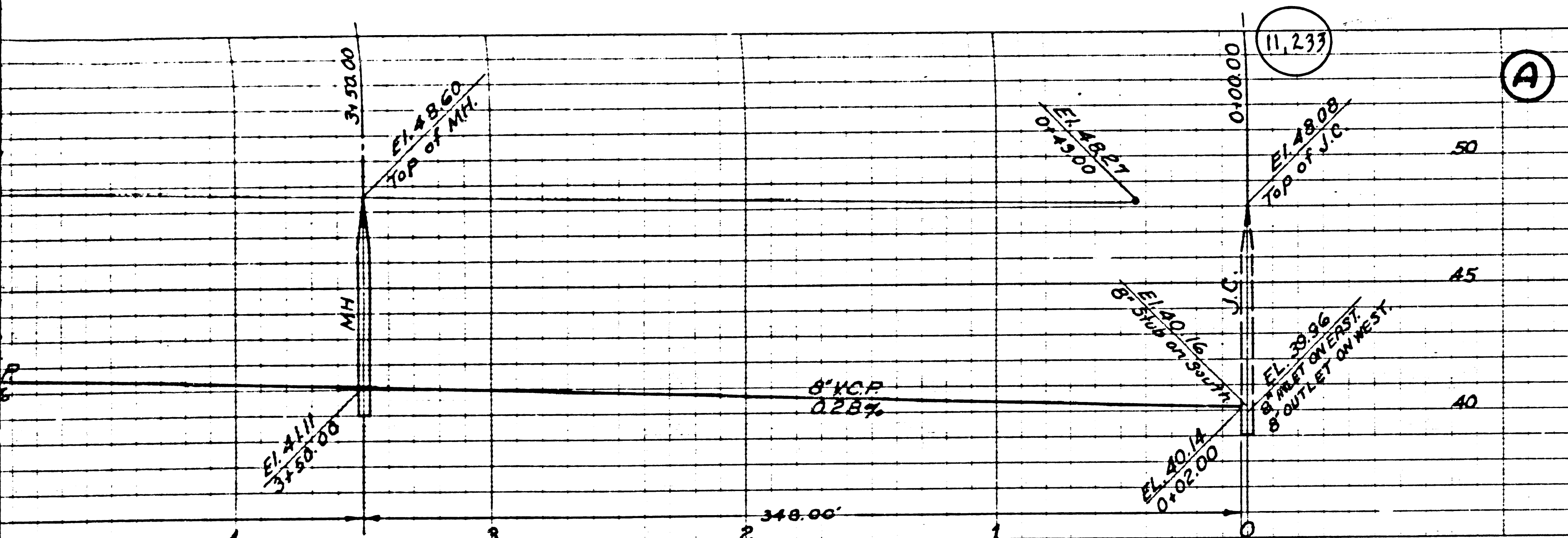
ENGINEERING SERVICE CORPORATION
1717 W. 10TH ST. LOS ANGELES, CALIF.
PR. 7261
Rev. per L.A. Co. Instructions 4-15-50
DRAWN BY: CHA. WY
CHECKED BY: R.W.M.
M. Buller Jr.
5977-10 10-3-31 15 Apr. 50 SHEET 3 OF 6
SCALE: HORIZ. 1" = 40' VERT. 1" = 4'

Checked
C. R. Compton
AST
H. L. Sander 6412

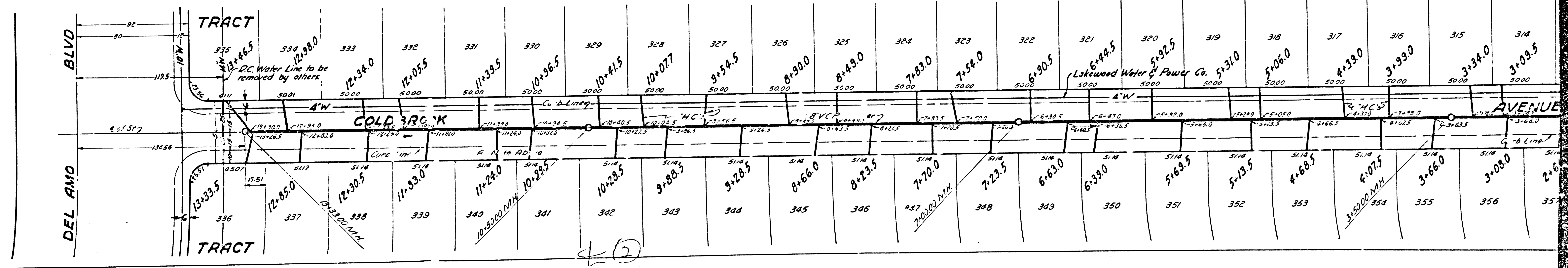
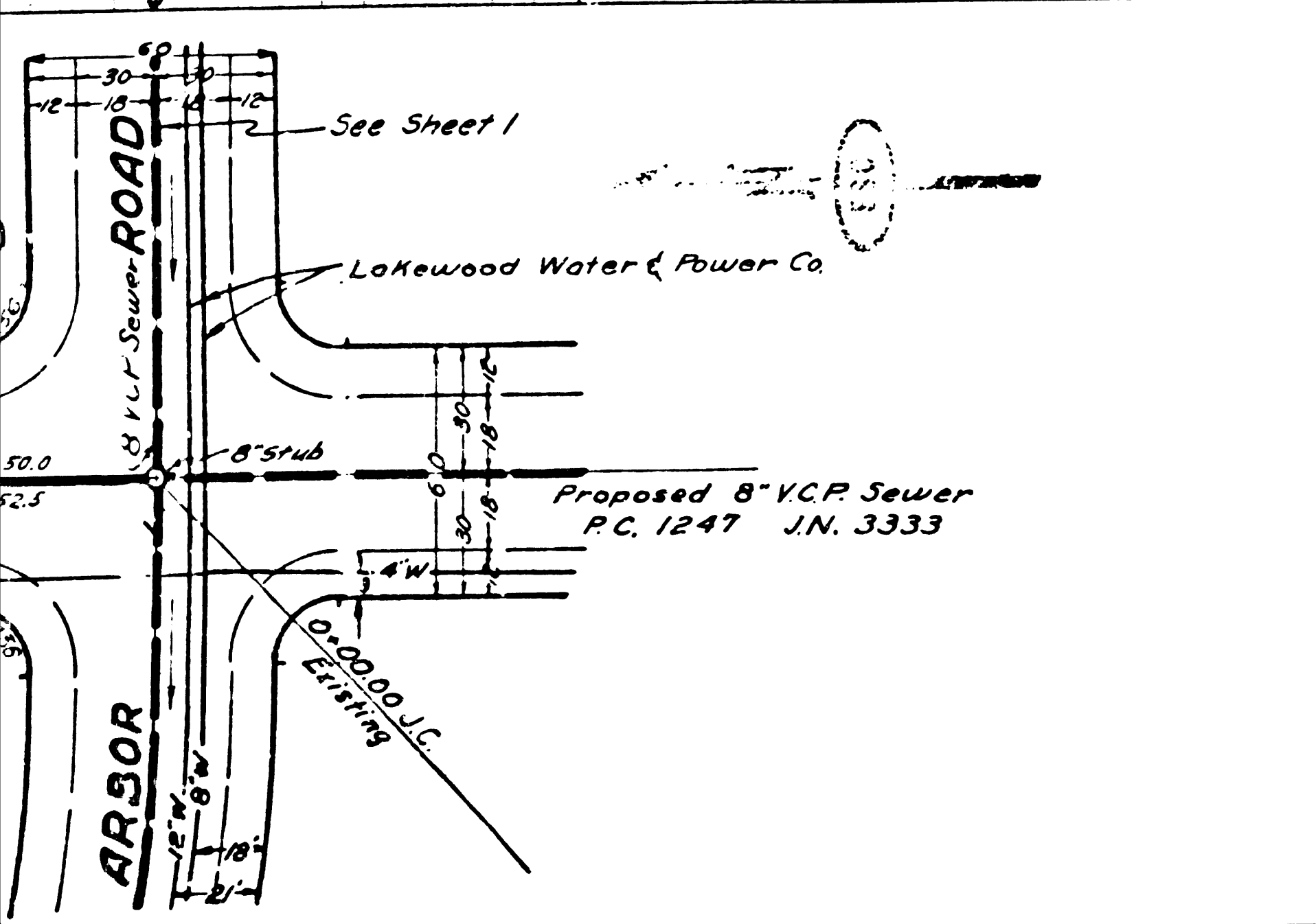
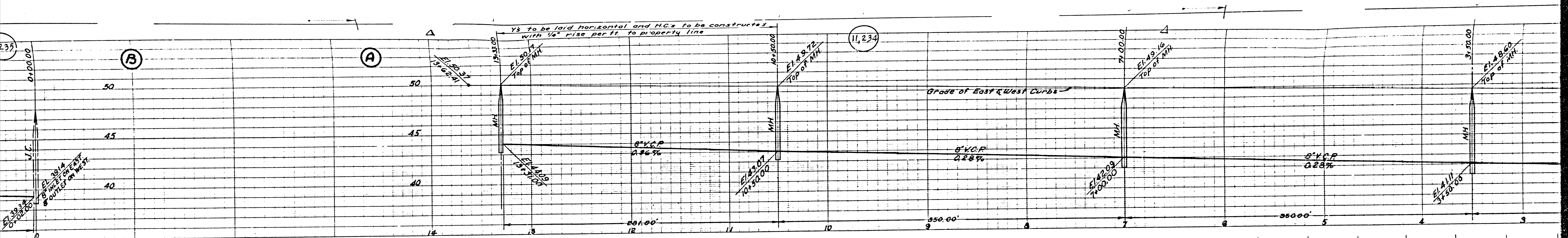
Approved 10-4-50 W. L. ...

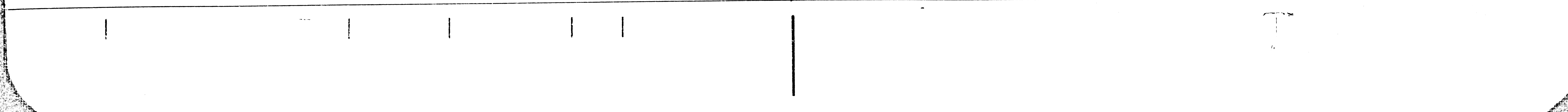
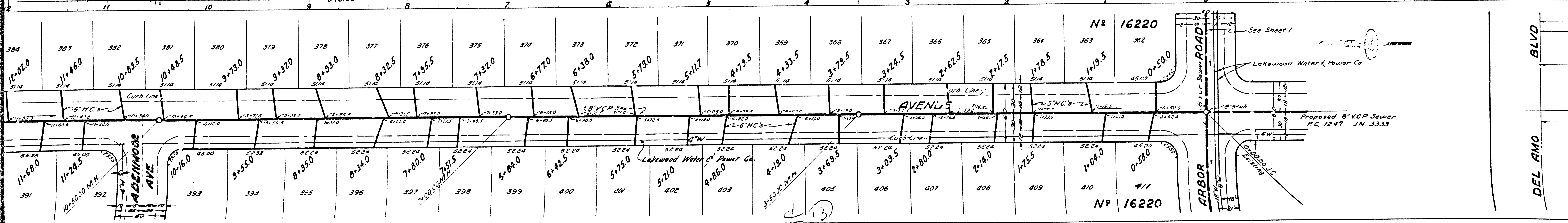
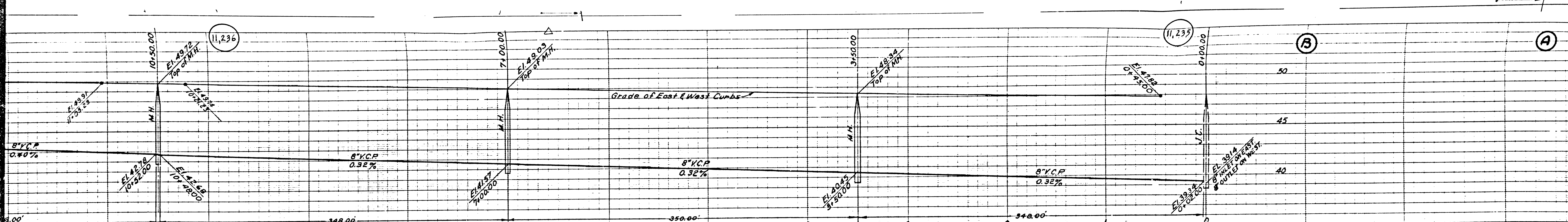
2201 GENESEE ST. COLDBROOK AVE. BRIERCREST AVE. TRACT N° 16220
 ENGINEERING SERVICE CORPORATION
 LOS ANGELES, CALIF.

B.M. 54 181-55 Elev. 49.005 C.S.B.C.
M.D.N. & Intersection Belltower &
Del Amo 4500 S of South St.



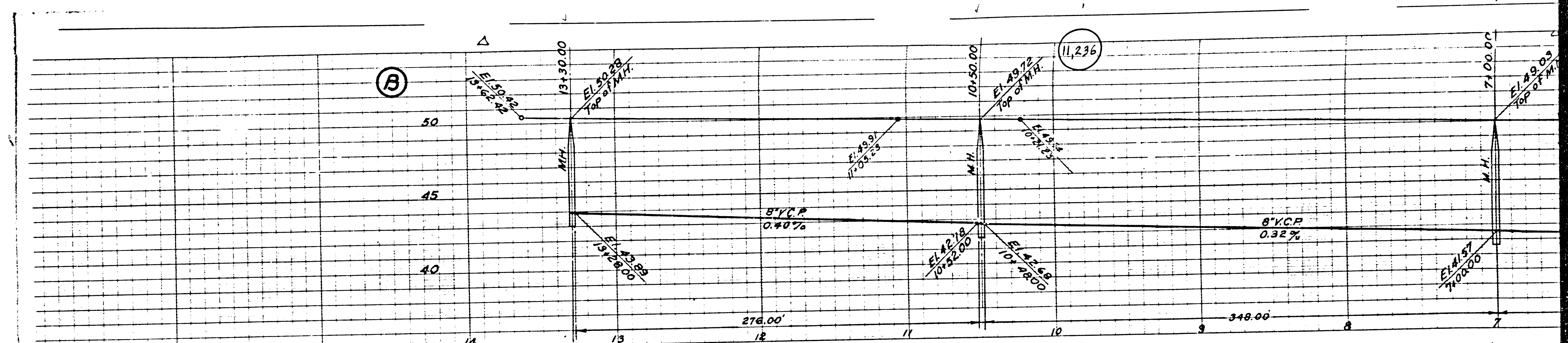
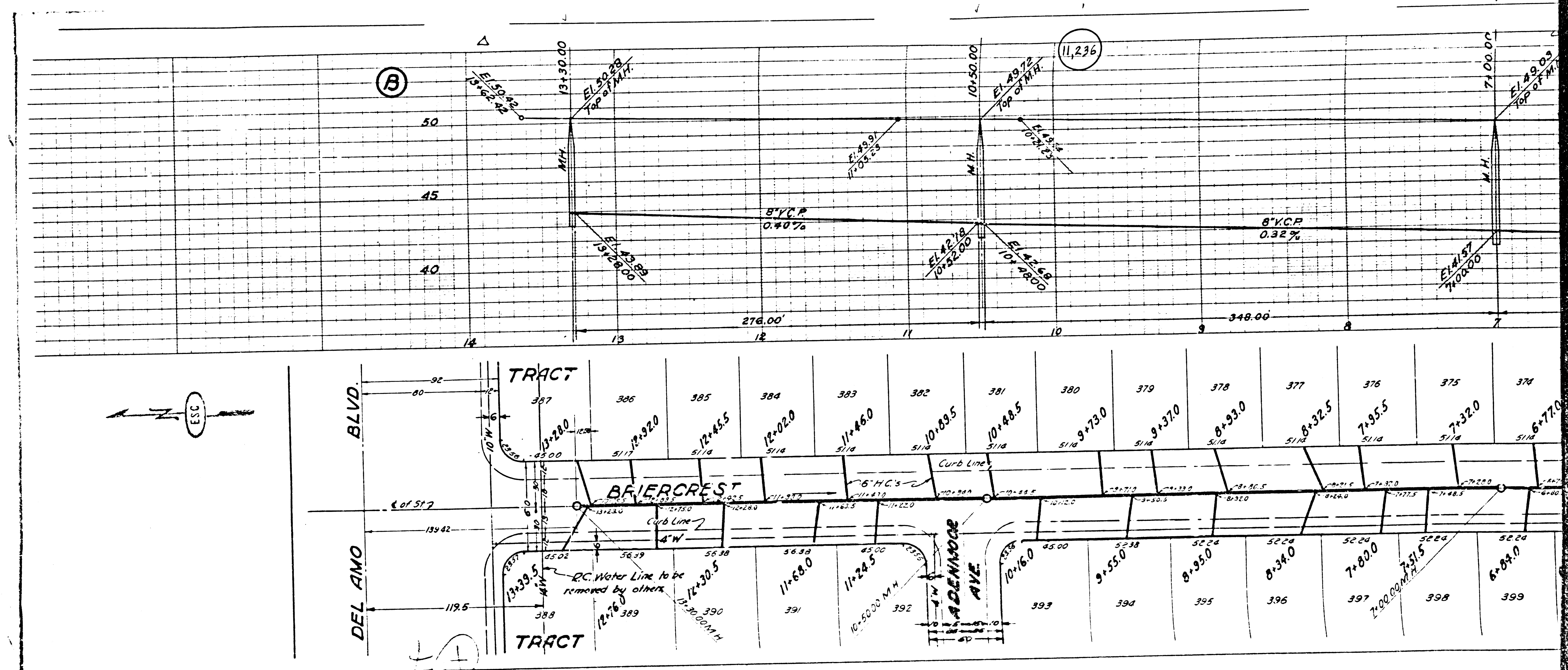
4-D

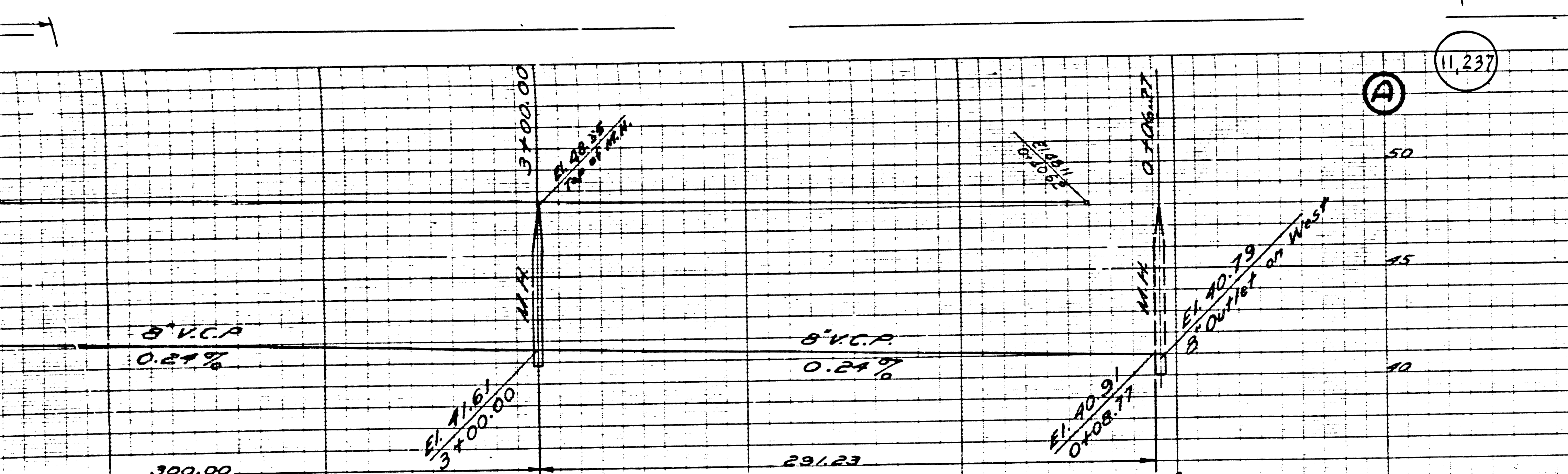




Station	Ground Elev.	Manhole Elev.	Depth	Notes
394	11+02.0	51/4	51/4	
393	11+46.0	51/4	51/4	
392	10+89.5	51/4	51/4	
391	10+48.5	51/4	51/4	
390	10+9+73.0	51/4	51/4	
379	9+37.0	51/4	51/4	
378	8+93.0	51/4	51/4	
377	8+32.5	51/4	51/4	
376	7+95.5	51/4	51/4	
375	7+32.0	51/4	51/4	
374	6+77.0	51/4	51/4	
373	6+38.0	51/4	51/4	
372	5+79.0	51/4	51/4	
371	5+11.7	51/4	51/4	
370	4+79.5	51/4	51/4	
369	4+33.5	51/4	51/4	
368	3+79.5	51/4	51/4	
367	3+24.5	51/4	51/4	
366	2+62.5	51/4	51/4	
365	2+17.5	51/4	51/4	
364	1+78.5	51/4	51/4	
363	1+19.5	51/4	51/4	
362	0+50.0	45.03	5.97	
391	11+58.0	51/4	51/4	
392	11+24.5	51/4	51/4	
393	10+16.0	51/4	51/4	
394	9+55.0	52.04	52.04	
395	8+95.0	52.04	52.04	
396	8+34.0	52.04	52.04	
397	7+80.0	52.04	52.04	
398	7+51.5	52.04	52.04	
399	5+84.0	52.04	52.04	
400	6+42.5	52.04	52.04	
401	5+75.0	52.04	52.04	
402	5+21.0	52.04	52.04	
403	4+86.0	52.04	52.04	
404	4+19.0	52.04	52.04	
405	3+69.5	52.04	52.04	
406	3+09.5	52.04	52.04	
407	2+80.0	52.04	52.04	
408	2+14.0	52.04	52.04	
409	1+75.5	52.04	52.04	
410	1+04.0	45.00	45.00	
411	0+58.0	45.00	45.00	

No. 16220
 Proposed 8" VCP Sewer
 P.C. 1247 J.N. 3333
 Lakewood Water & Power Co.
 See Sheet 1
 ARBOR ROAD
 DEL RMO BLVD

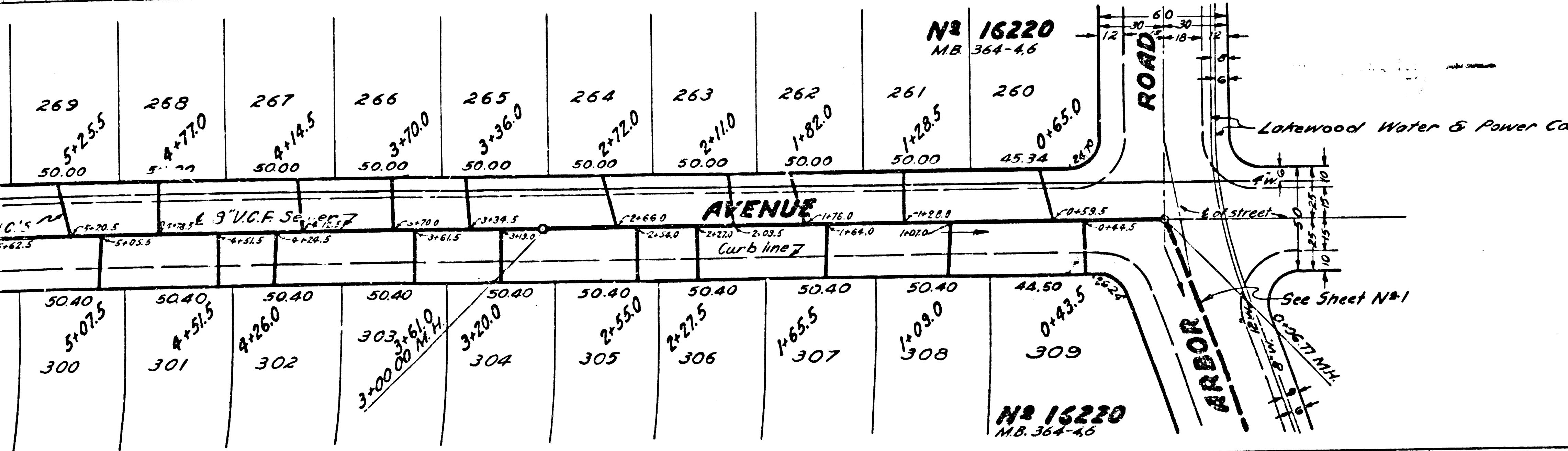




B.M. 57 131-55 Elev. 45.405 C.S.B.C.
Mon. & Intersection Bellflower
Blvd. & Del. Ave. Blvd.

PROFILE, GRADE AND ALIGNMENT OF
SANITARY SEWERS
TO BE CONSTRUCTED IN
DUNROBIN AVE.
BETWEEN DEL AMO BLVD. AND ARBOR ROAD
EASTBROOK AVE.
BETWEEN DEL AMO BLVD. AND ARBOR ROAD
IN TRACT N° 16220

PRIVATE CONTRACT NO. 1241
W. 31
SHEET 4 OF 6 SHEETS
APRIL 1950
PREPARED IN THE OFFICES OF
ENGINEERING SERVICE CORPORATION



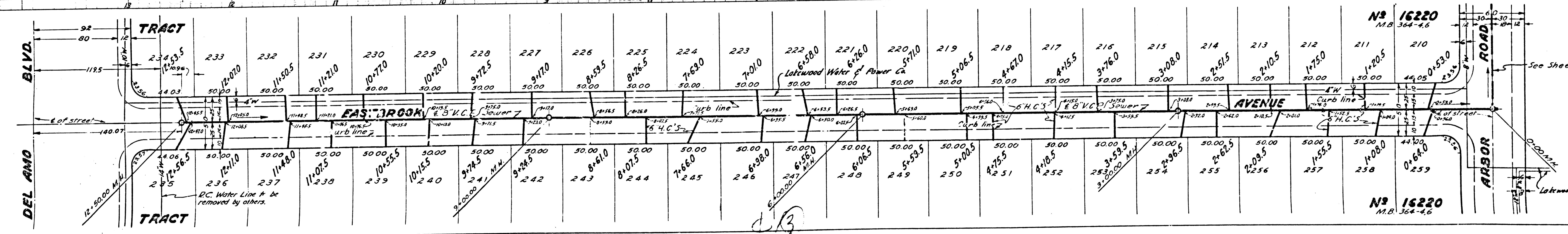
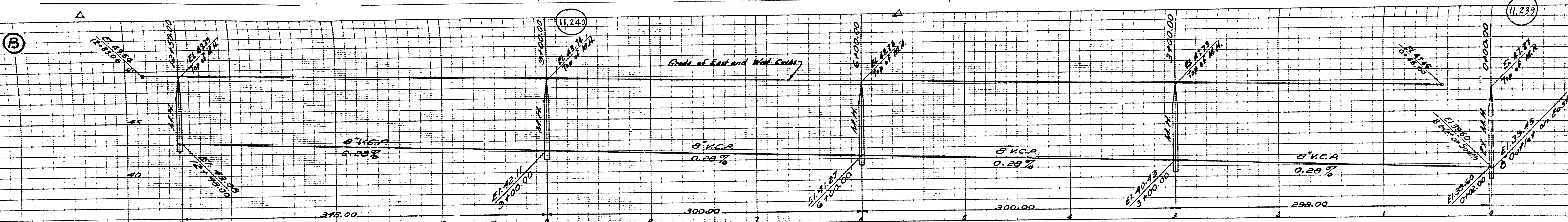
ENGINEERING SERVICE CORPORATION
1127 W. WASHINGTON BLVD.
LOS ANGELES 15, CALIF. PR 7281
Rev. per L.A. Co. Instructions 4-15-50
TRACED BY L.K. JA
DESIGNED BY P.M.H.
CHECKED BY J.M.
SUBMITTED BY H. P. ...
SUB STRUCTURES: C.H.D.
W.D. NO. 5977-10 ENG. NO. 10-4-31 DATE 4-15-50
SCALE: 1" = 40'

CITY OF LOS ANGELES, CALIF. AREA
APPROVED: *C.R. Compton*
APPROVED: *H.L. ...*
CHECKED: *H.L. ...*
OFFICE OF COUNTY ENGINEER, BLDG. DEPT. 6412

2241 GENERAL
 150 W. MAIN ST. 113353
 EASTBROOK AVE. TRACT N° 16220
 DUNROBIN AVE
 11/10

10-5-50

7/2/51

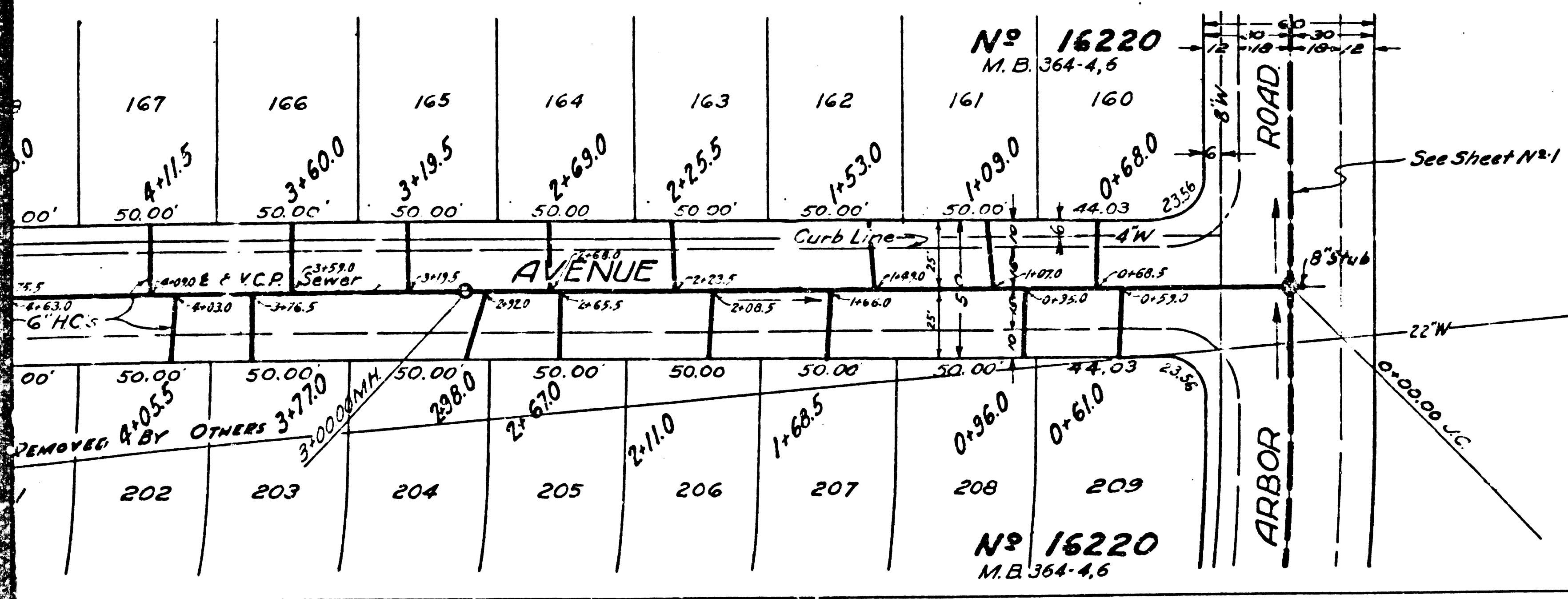
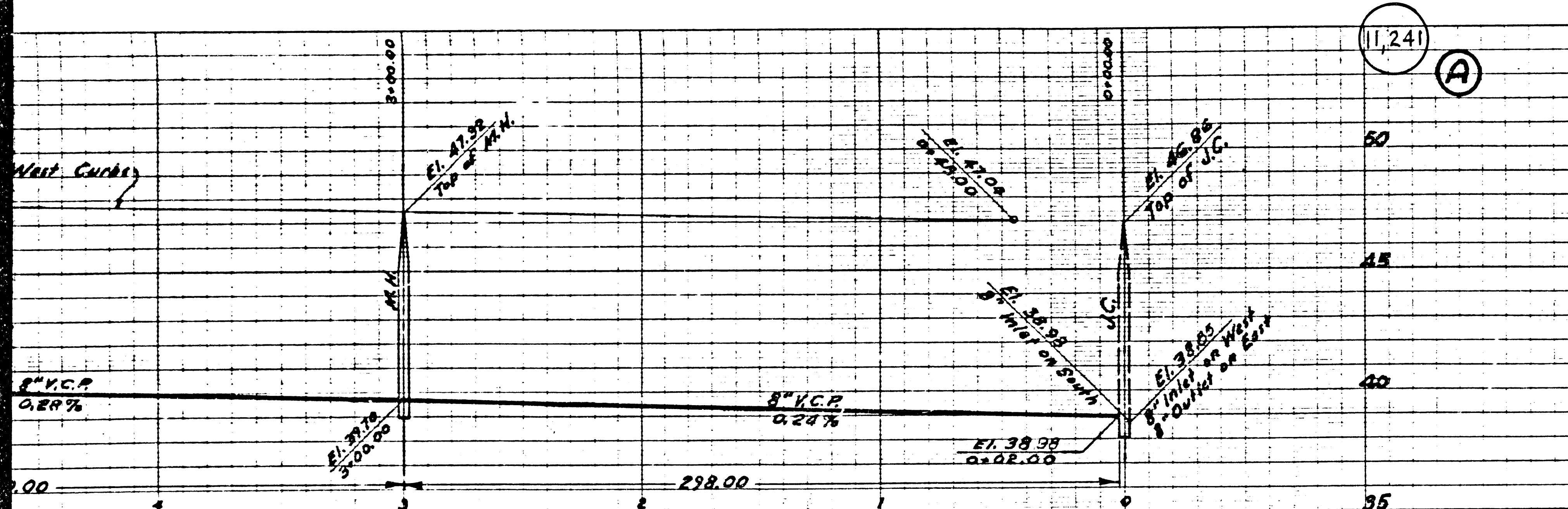


B.M. 51131-55. ELEV. 49.105
0.500 M.F.M. @ INTERSECTION
BELLFLOWER & DEL AMO
34500 FT. 50. OF SOUTH ST.

PROFILE GRADE AND ALIGNMENT OF
SANITARY SEWERS

TO BE CONSTRUCTED IN
OCANA AVE.
BETWEEN DEL AMO BLVD. AND ARBOR ROAD.
LOMINA AVE.
BETWEEN DEL AMO BLVD. AND ARBOR ROAD.
RADNOR AVE.
BETWEEN DEL AMO BLVD. AND ARBOR ROAD.
IN TRACT N° 16220.

PRIVATE CONTRACT NO. 1241
SHEET 5 OF 6 SHEETS
APRIL 1950
PREPARED IN THE OFFICES OF
ENGINEERING SERVICE CORPORATION



ENGINEERING SERVICE CORPORATION
1127 W. WASHINGTON BLVD
LOS ANGELES 12, CALIF. PR 7281
DESIGNED BY: *E.S. JR.*
CHECKED BY: *M.S.*
SUBMITTED BY: *W. D. Smith*

Rev. per L.A. Co. Instructions 4-15-50

SUB STRUCTURES OK'D

DATE: 4-15-50
SCALE: 1" = 10'

FOR LEGEND
SEE PLAN NO. 5-154
DATE OF INSTR. & NOTES SEE PLAN

E. F. Young
REG. P. ENGR. NO. 1021

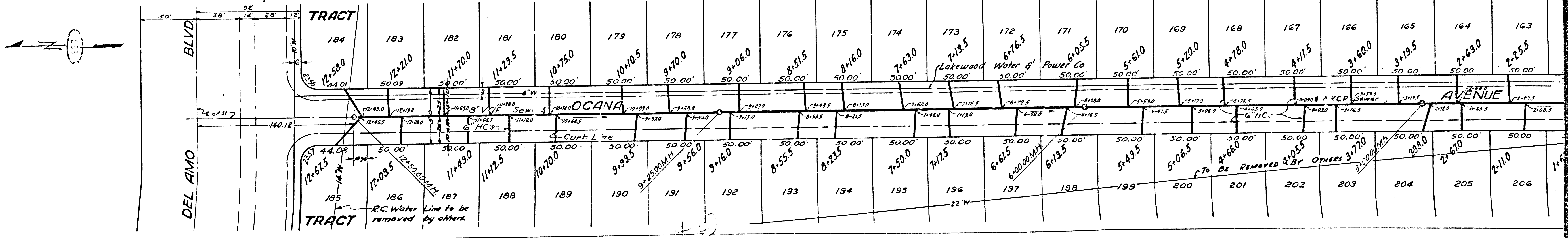
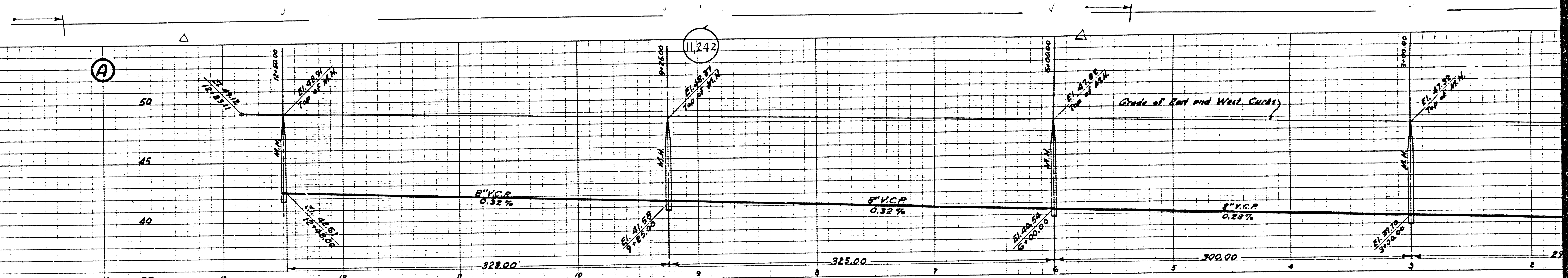
C. R. Compton
ATTEST

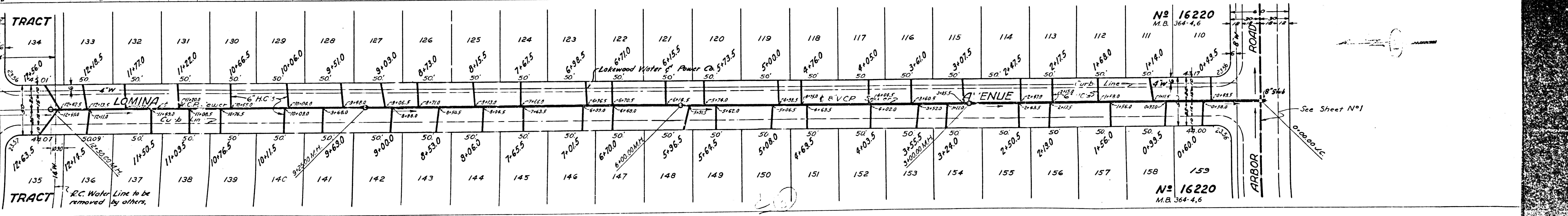
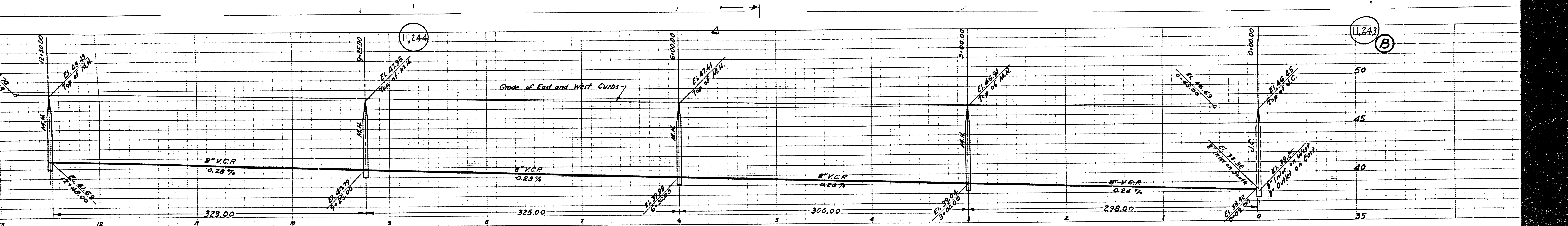
H. L. Packer
REG. P. ENGR. NO. 6412

D. S. H. 100
E. S. H. 100

April 10, 5-50 Williams

7/1/50





TRACT 134 133 132 131 130 129 128 127 126 125 124 123 122 121 120 119 118 117 116 115 114 113 112 111 110

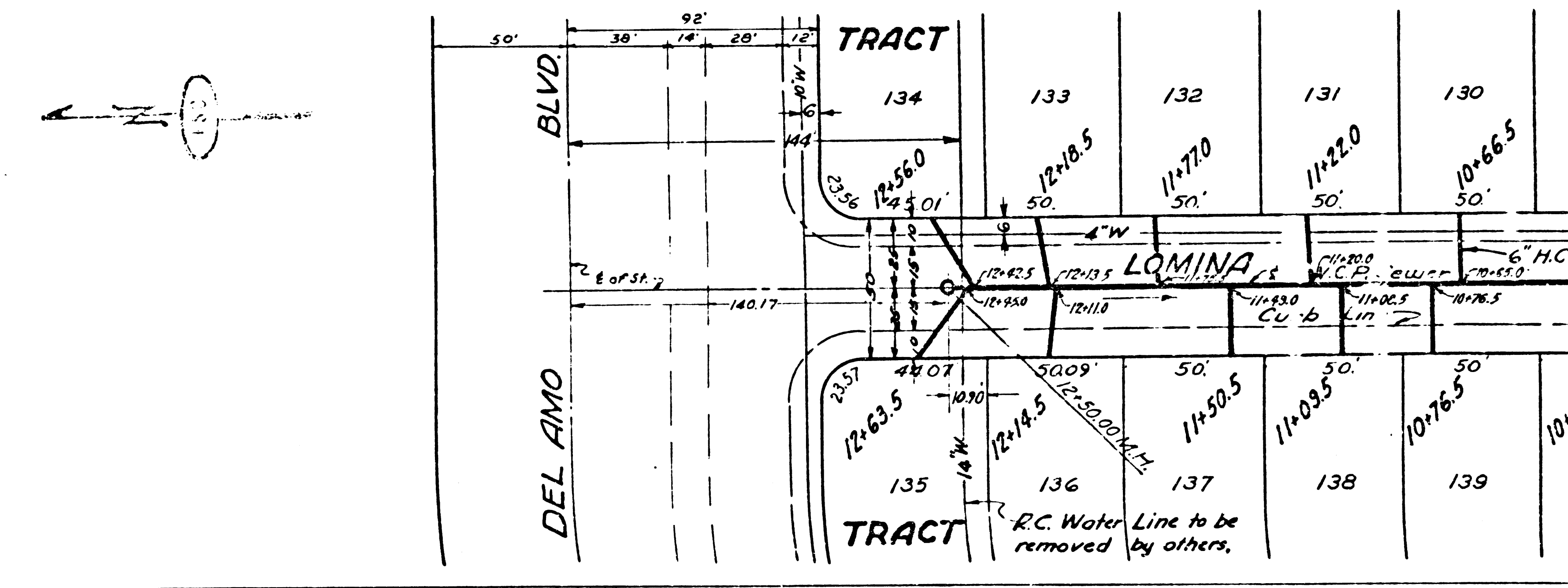
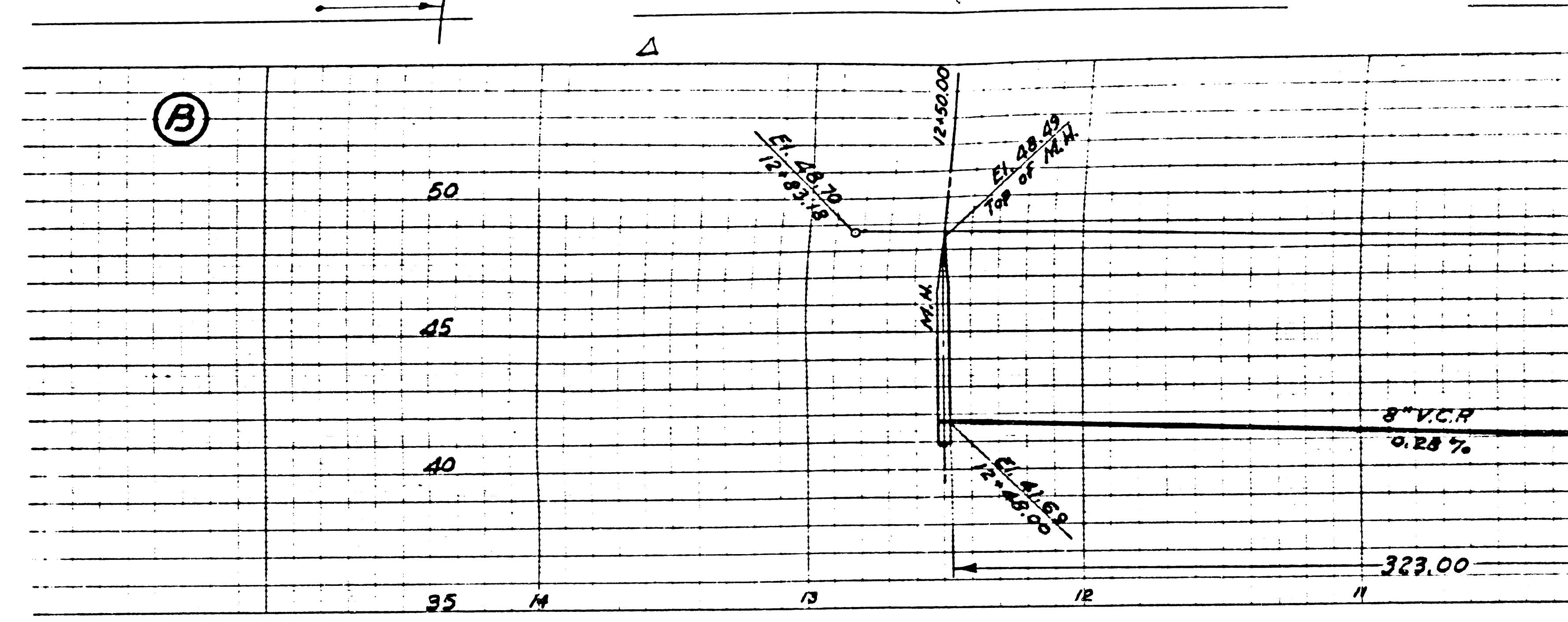
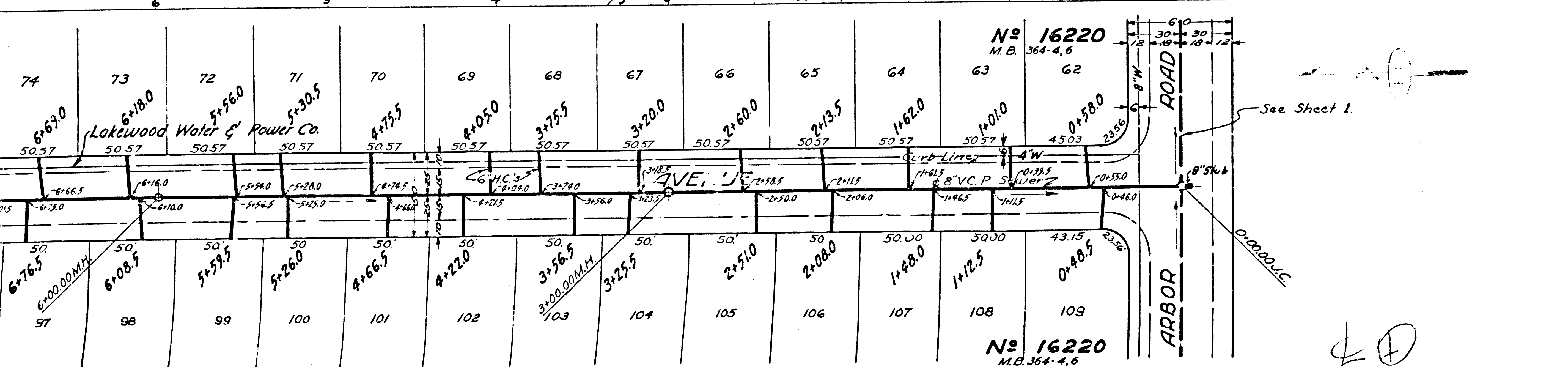
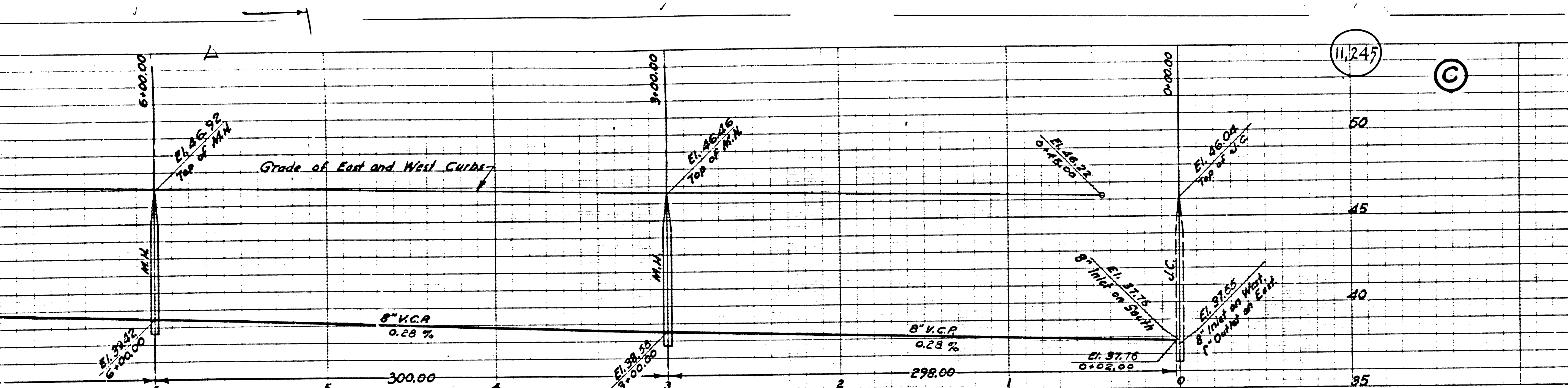
TRACT 135 136 137 138 139 140 141 142 143 144 145 146 147 148 149 150 151 152 153 154 155 156 157 158 159

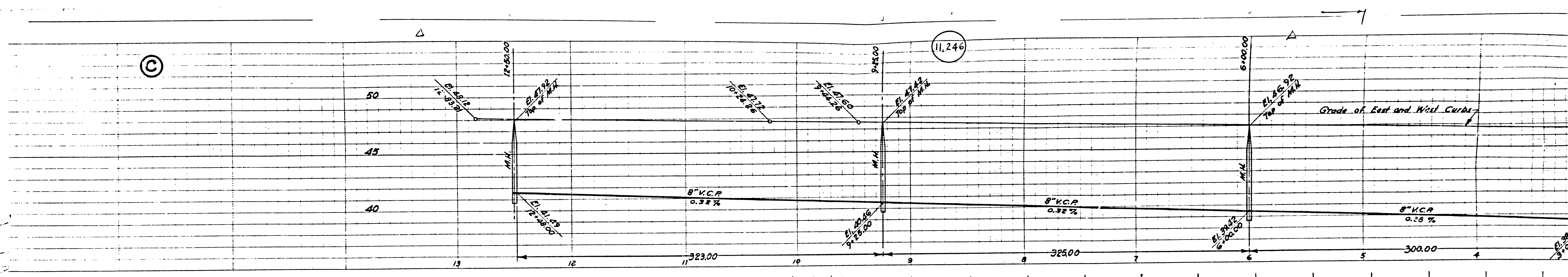
LOMINA

ARBOR ROAD

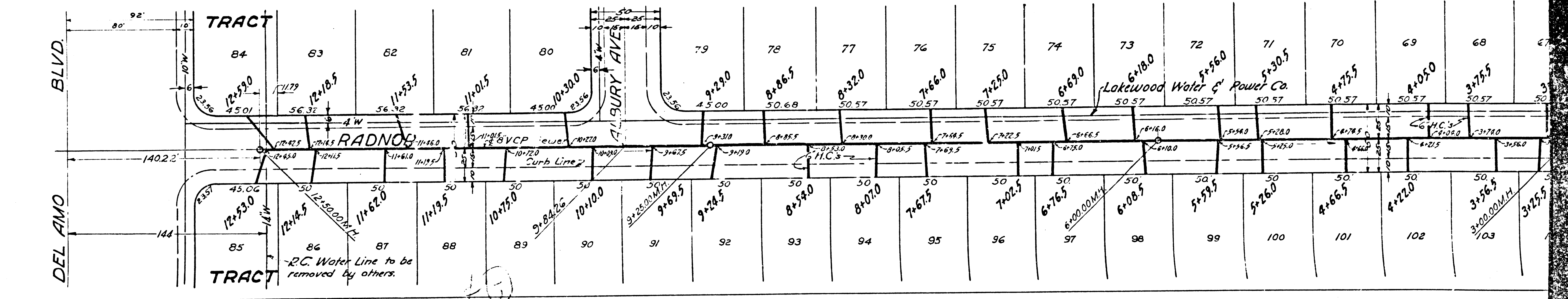
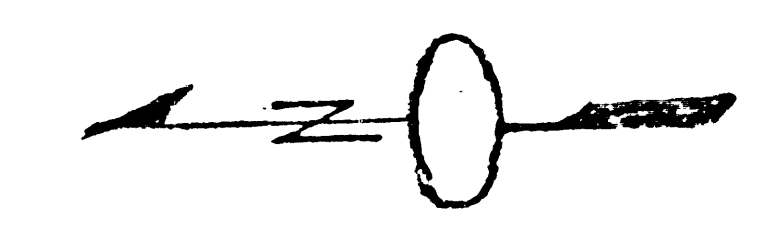
See Sheet No. 1

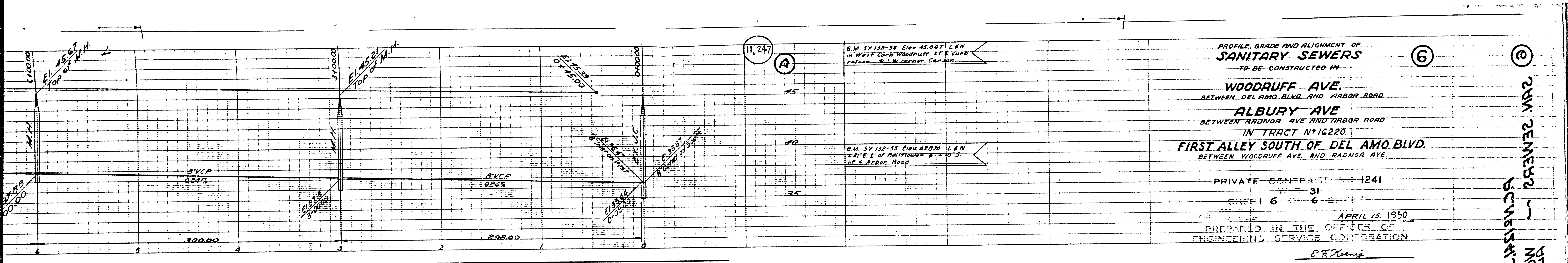
No. 16220
M.B. 364-4,6



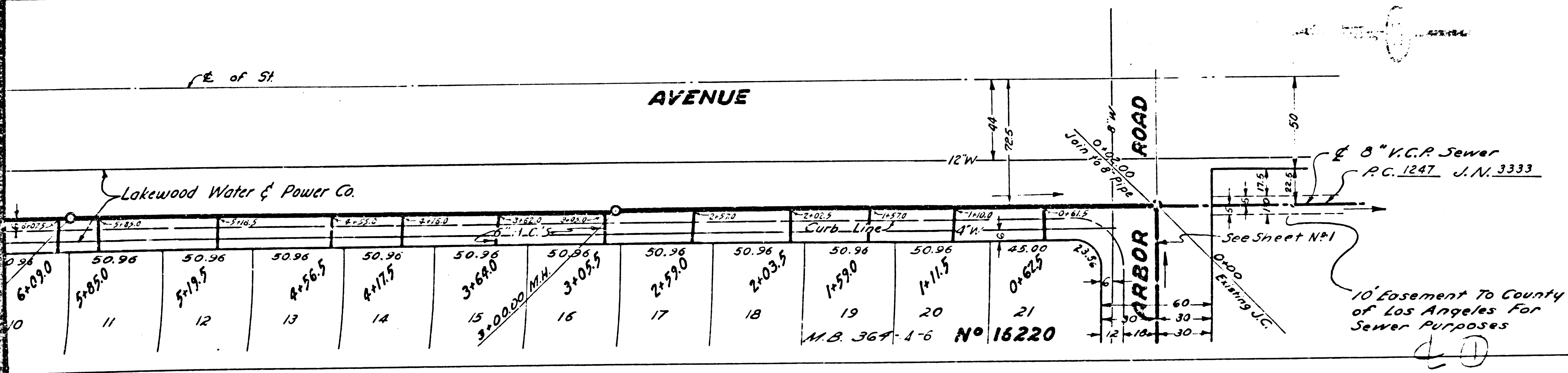


©





PRIVATE CONTRACT NO. 1241
 SHEET 6 OF 6
 APRIL 15, 1950
 PREPARED IN THE OFFICES OF
 ENGINEERING SERVICE CORPORATION
 E.F. Hoernig

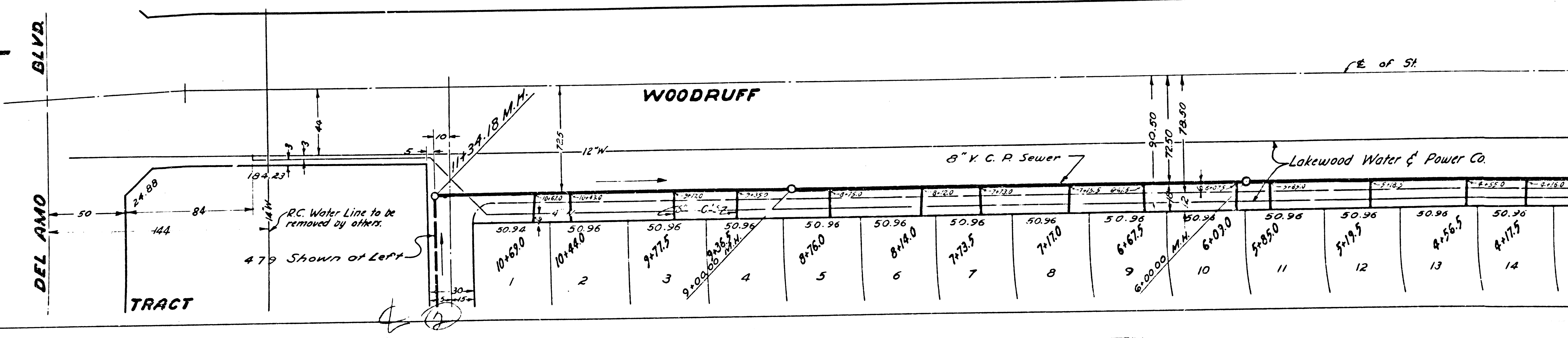
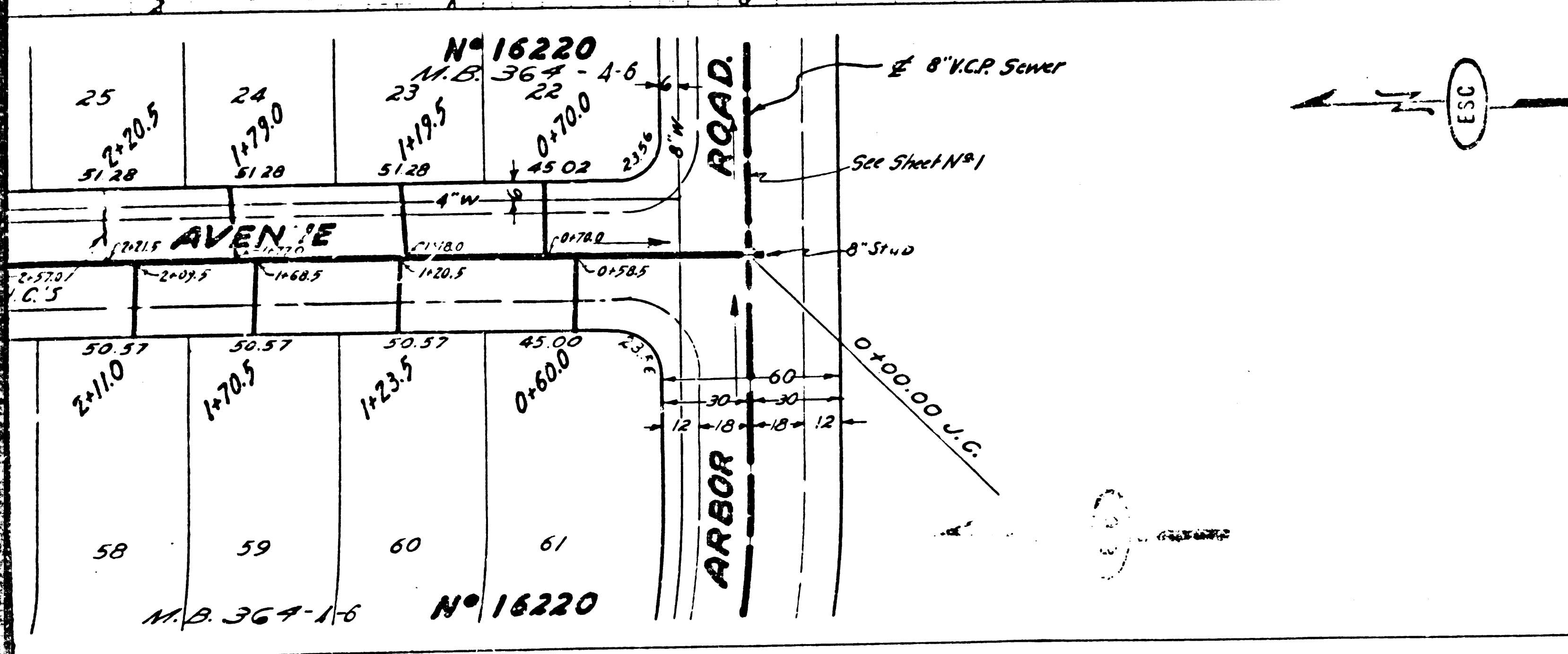
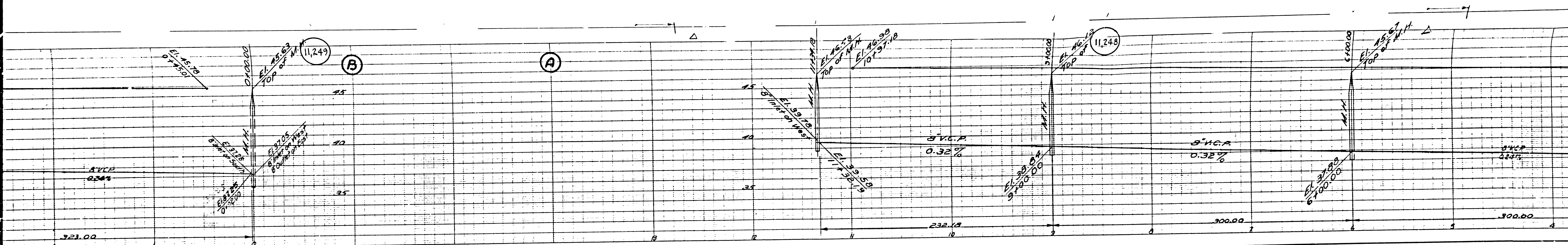


ENG. NO. 5977-10
 REV. PER L.A. CO. INSTRUCTIONS 4-15-50
 PR 7281
 J.A. L.K. MC
 P.V.H.
 M.S.
 M. Butler Jr.

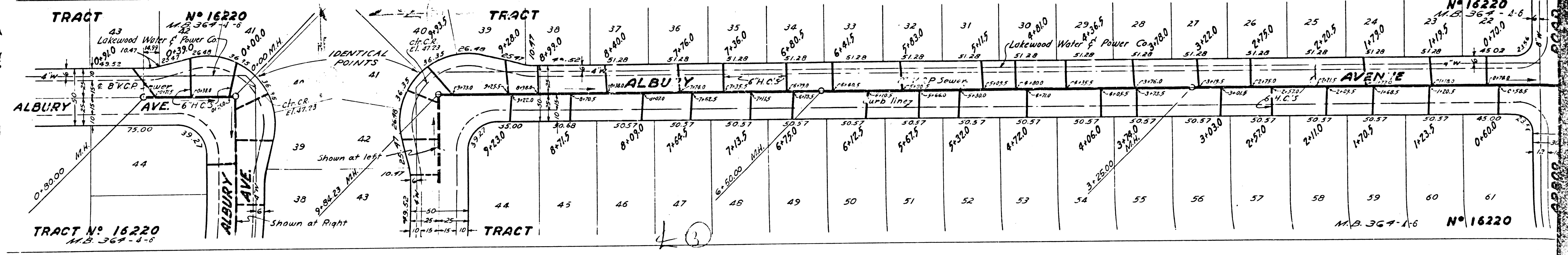
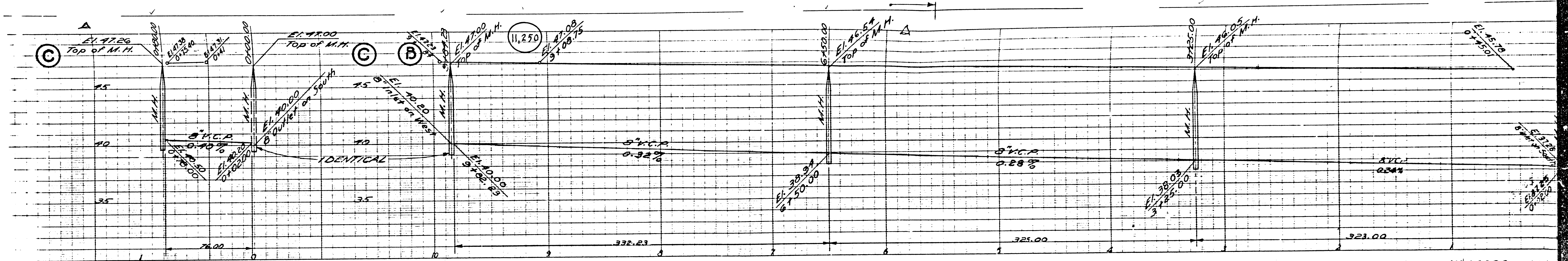
C.R. Compton
 H.L. Paulsen 6018

Checked 10-5-50 *M. L. ...*

ARBOR ROAD
 WOODRUFF AVE
 TRACT N° 16220
 CIVIL ENGR.



D



43

M.B. 367-1-6 N° 16220

