

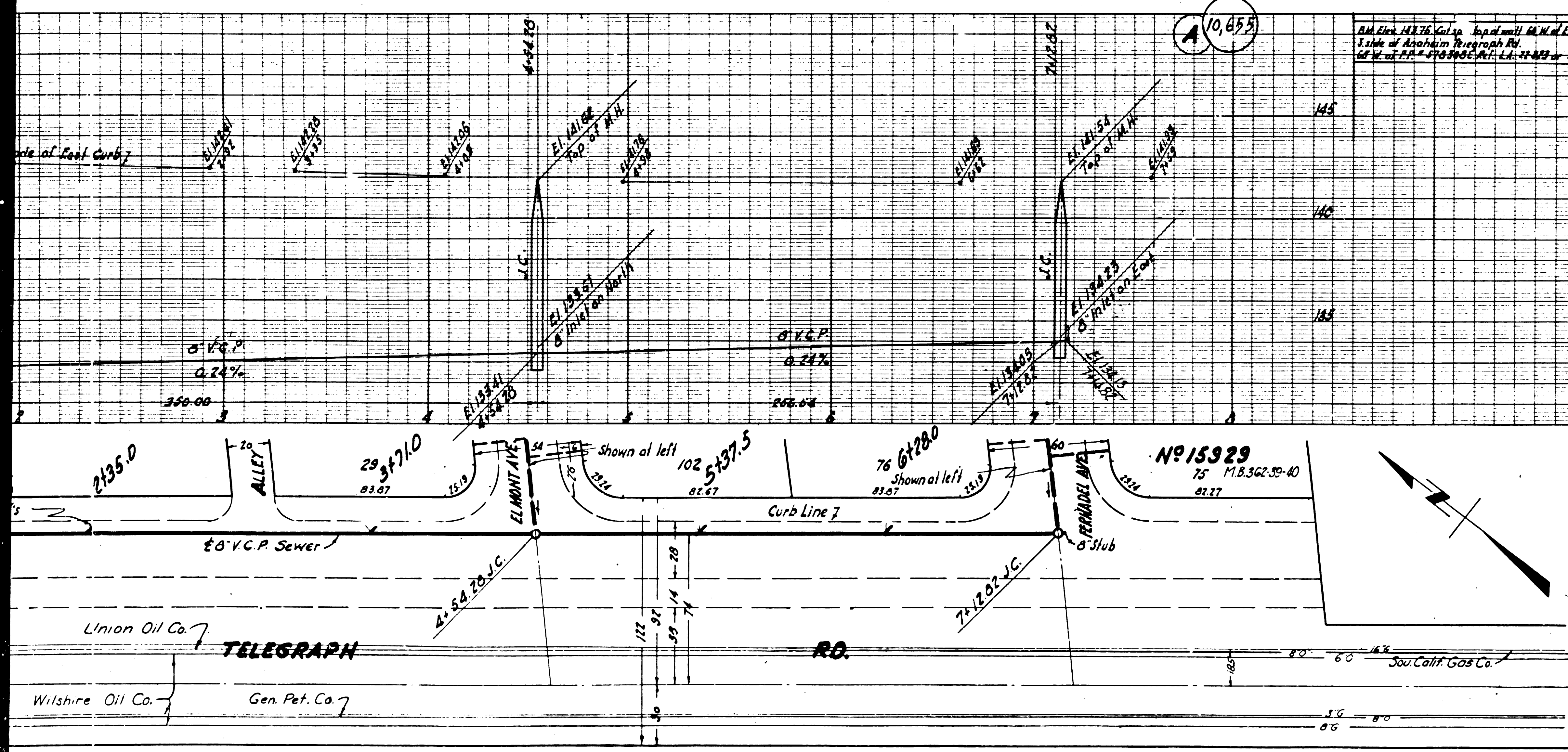
ON SCALE OF 1" = 40' HORIZ. SCALE OF 1" = 4' VERT. SCALE OF 1" = 4' X 30' VERT. SCALE OF 1" = 4' X 30' VERT. SCALE OF 1" = 4' X 30'

NEW YORK REFLECTOR PAPER CO.

NEW YORK REFLECTOR PAPER CO.

Trim Line

ON SCALE OF 1" = 40' HORIZ. SCALE OF 1" = 4' VERT. SCALE OF 1" = 4' X 30' VERT. SCALE OF 1" = 4' X 30'



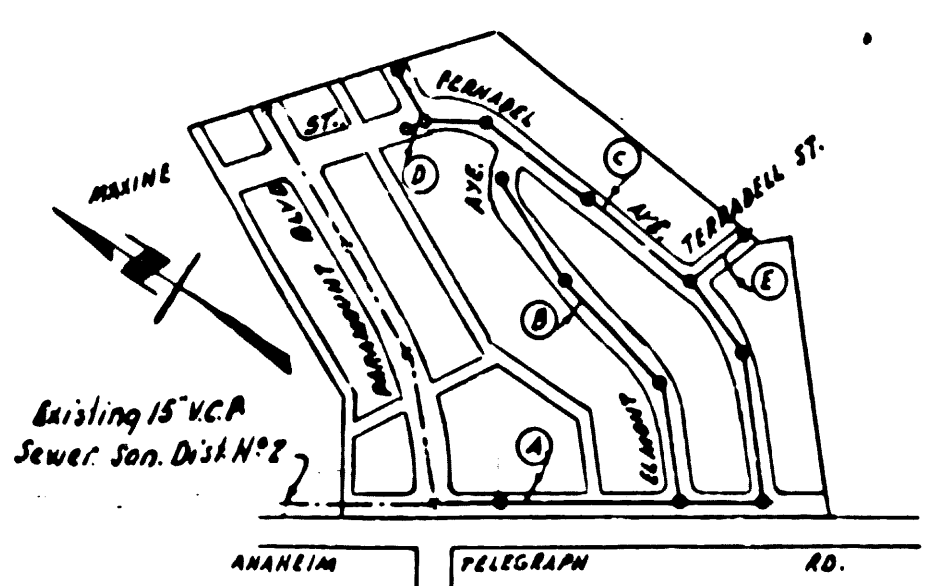
- 1. USE STANDARD MANHOLE FRAMES AND COVERS 24\"/>
- 2. USE STANDARD OFFSETS FOR ALL MANHOLES EXCEPT AS NOTED.
- 3. USE STANDARD HOLES FOR ALL UNREINFORCED CLAY PIPE JOINTS.
- 4. REINFORCE ALL FRAMES WITHIN PAVED AREAS TO MEET LOS ANGELES COUNTY ROAD DEPARTMENT'S CALIFORNIA STATE HIGHWAY SPECIFICATIONS.
- 5. CONSTRUCT HOUSE CONNECTIONS WITH INVERT AT PROPERTY LINE (6 FEET BELOW CURB GRADE) EXCEPT AS NOTED.
- 6. ENCASE FOUR FEET OF SEWER AT POINTS OF INTERFERENCE WITH POLES AS PER RULES.
- 7. ALL STRUCTURES SHALL BE BUILT SEVEN FEET ABOVE GROUND.
- 8. CONSTRUCT SOPS OF ALL STRUCTURES IN SLOPES UP WAY SIX INCHES ABOVE FINISHED GRADE.

NOTE: NO REPRESENTATIVE OF THE COUNTY ENGINEER WILL SURVEY OR LAYOUT ANY PORTION OF THE WORK.  
 THE OWNER OR HIS AUTHORIZED REPRESENTATIVE SHALL FURNISH THE COUNTY ENGINEER WITH GRADE SHEETS AND STATIONS OF ALL HOUSE CONNECTIONS AND 72\"/>

**PROFILE ALIGNMENT AND GRADE OF SANITARY SEWERS TO BE CONSTRUCTED IN ANAHEIM TELEGRAPH ROAD BETWEEN ANAHEIM TELEGRAPH RD AND PARAMOUNT BLVD. FERNADEL AVENUE BETWEEN ANAHEIM TELEGRAPH RD AND FERNADEL ST. MAXINE STREET BETWEEN FERNADEL ST. AND A SPRING STREET. TERRADEL STREET BETWEEN FERNADEL ST. AND A SPRING STREET. PRIVATE CONTRACT NO. 1529**  
 W. E. 36  
**SHEET 1 OF 1 SHEETS**

PREPARED IN THE OFFICES OF  
**GLEN ROOD**  
 BY *Glen Rood*  
 REGISTERED CIVIL ENGINEER

Note: Lots 1 to 28 served by 15\"/>



INDEX MAP  
 PG. 1745 JAN 31 1929  
 TRACT NO. 15929  
 SCALE 1\"/>

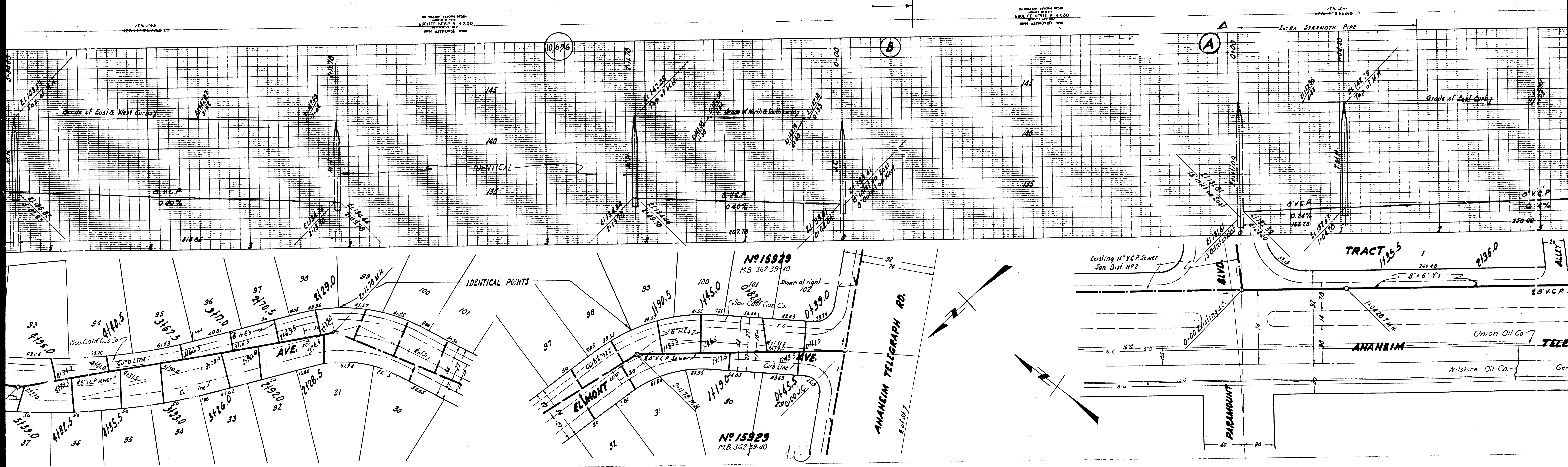
**FOR LEGEND**  
 NOTE: GRADES TO WHICH THIS INFRASTRUCTURE IS TO BE CONSTRUCTED ARE SHOWN ON PLANS AND PROFILES.  
 GRADE POINTS FOR TOP OF CURB, CENTER LINE OF STREET OR CENTER LINE OF ALLEY, TOP OF 24\"/>

COUNTY OF LOS ANGELES, CALIFORNIA  
 APPROVED: *John T. Patton*  
 COUNTY ENGINEER  
 APPROVED: *J. R. Compton*  
 CHECKED BY: *John T. Patton*  
 OFFICE OF COUNTY ENGINEER, 3-17-59  
 MAR 30 1950

Trim Line

7/2/59





NEW YORK  
HERRICK & FERRIS CO.

NEW YORK  
HERRICK & FERRIS CO.

NEW YORK  
HERRICK & FERRIS CO.

NEW YORK  
HERRICK & FERRIS CO.

10,676

B

A

No 15929  
M.B. 362-39-40

No 15929  
M.B. 362-39-40

TRACT 11355

21350

ANAHEIM

TELE

ANAHEIM TELEGRAPH RD.

PARAMOUNT

Union Oil Co.

Wilshire Oil Co.

Existing 15" V.C.P. Sewer  
San. Dist. No 2

BLVD

BLVD

BLVD

BLVD

BLVD

BLVD

BLVD

BLVD

BLVD

BLVD

IDENTICAL POINTS

IDENTICAL

Grade of East & West Curbs

Grade of North & South Curbs

Grade of East Curbs

Grade of East Curbs

Grade of East Curbs

Grade of East Curbs

Grade of East Curbs

Grade of East Curbs

Grade of East Curbs

Grade of East Curbs

Grade of East Curbs

Grade of East Curbs

Grade of East Curbs

Grade of East Curbs

Grade of East Curbs

Grade of East Curbs

ELIMONT

ELIMONT

ELIMONT

ELIMONT

ELIMONT

ELIMONT

ELIMONT

ELIMONT

ELIMONT

ELIMONT

ELIMONT

ELIMONT

ELIMONT

ELIMONT

ELIMONT

ELIMONT

ELIMONT

ELIMONT

ELIMONT

ELIMONT

ELIMONT

ELIMONT

ELIMONT

ELIMONT

ELIMONT

ELIMONT

ELIMONT

ELIMONT

ELIMONT

ELIMONT

ELIMONT

ELIMONT

ELIMONT

ELIMONT

ELIMONT

ELIMONT

ELIMONT

ELIMONT

ELIMONT

ELIMONT

ELIMONT

ELIMONT

ELIMONT

ELIMONT

ELIMONT

ELIMONT

ELIMONT

ELIMONT

ELIMONT

ELIMONT

ELIMONT

ELIMONT

ELIMONT

ELIMONT

ELIMONT

ELIMONT

ELIMONT

ELIMONT

ELIMONT

ELIMONT

ELIMONT

ELIMONT

ELIMONT

ELIMONT

ELIMONT

ELIMONT

ELIMONT

ELIMONT

ELIMONT

ELIMONT

ELIMONT

ELIMONT

ELIMONT

ELIMONT

ELIMONT

ELIMONT

ELIMONT

ELIMONT

ELIMONT

ELIMONT

ELIMONT

ELIMONT

ELIMONT

ELIMONT

ELIMONT

ELIMONT

ELIMONT

ELIMONT

ELIMONT

ELIMONT

ELIMONT

ELIMONT

ELIMONT

ELIMONT

ELIMONT

ELIMONT

ELIMONT

ELIMONT

ELIMONT

ELIMONT

ELIMONT

ELIMONT

A

B

C

D

E

F

G

H

I

J

K

L

M

N

O

P

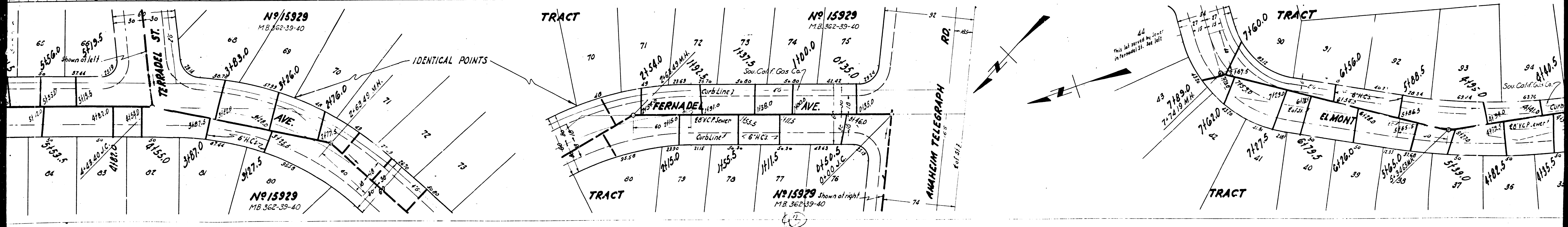
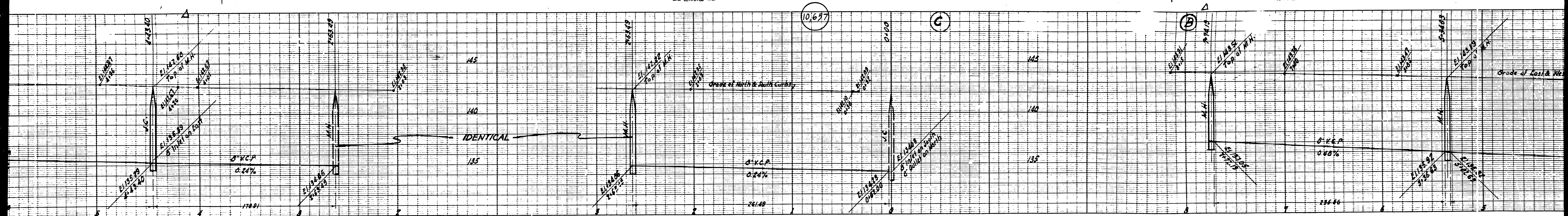
Q

R



NEW YORK  
ENGINEERS & ARCHITECTS  
INCORPORATED

NEW YORK  
ENGINEERS & ARCHITECTS  
INCORPORATED





ON PLANNED LAYOUT FROM  
RECORD MAP NO. 10697  
DATE 2/17/1920

ON PLANNED LAYOUT FROM  
RECORD MAP NO. 10698  
DATE 2/17/1920

