

B.M. B.D.-83 Elev. 161.543 L.A. Co. Sur.
 F.B. 1176 - Pg. 119
 Washington Blvd. & Parsons Blvd., N.E. Cor.
 Boat Spk. in top (E. end) conc. headwall
 of culvert.

Note: Approval of this plan by the County of Los Angeles does not constitute a representation as to the accuracy of the location of, or the existence or non-existence of, any underground utility, pipe or structure within the limits of this project.

USE STANDARD STRENGTH PIPE
USE CEMENT MORTAR FOR ALL VITRIFIED CLAY PIPE JOINTS
ENCASE FOUR FEET OF SEWER AT POINTS OF INTERFERENCE WITH POLES AS PER S-4-119
CONSTRUCT HOUSE CONNECTIONS WITH INVERT AT CURB LINE 5'- FEET BELOW CURB GRADE
ALL STRUCTURES SHALL BE BRICK SEWER STRUCTURES AS PER PLAN NO. S-4-104
USE STANDARD MANHOLE FRAMES AND COVERS AS PER PLAN NO. S-4-117
RESURFACE ALL TRENCHES WITHIN PAVED AREA TO MEET LOS ANGELES COUNTY ROAD DEPT. OR STATE HIGHWAY REQUIREMENTS
PROVIDE STAKES ON THE PROPERTY LINES OR PROPERTY LINES PRODUCED, AT RIGHT ANGLES TO THE SEWER LINE AT THE CENTER LINE OF EACH MANHOLE.
NO REVISIONS SHALL BE MADE IN THESE PLANS WITHOUT APPROVAL OF THE COUNTY ENGINEER
NO REPRESENTATIVE OF THE COUNTY ENGINEER WILL SURVEY OR LAY OUT ANY PORTION OF THE WORK
THE OWNER OR HIS AUTHORIZED REPRESENTATIVE SHALL FURNISH THE COUNTY ENGINEER WITH GRADE SHEETS AND STATIONS OF ALL HOUSE CONNECTIONS AND Y BRANCHES, AND SHALL PROVIDE STAKES FOR THEM AT THEIR PROPER LOCATIONS WITH STATIONING PLAINLY MARKED.
ANY CHANGE OF LOCATION SHALL BE REQUESTED IN WRITING BY THE OWNER OR HIS REPRESENTATIVE.

PROFILE ALIGNMENT AND GRADE OF
SANITARY SEWERS
 TO BE CONSTRUCTED IN
 TRACT NO. 13480
PICOVISTA ROAD
 BETWEEN RIESHEL ST. & WINCHELL ST.
 MILLUX AVE.
 BETWEEN RIESHEL ST. & BALFOUR ST.
 CORD AVE.
 BETWEEN MARJORIE ST. & BALFOUR ST.

PRIVATE CONTRACT NO. 1245
 W. S. 36

SHEET 1 OF 3 SHEETS
 JANUARY 6, 1950

PREPARED IN THE OFFICES OF
KEMMERER ENG. CO.

BY: *John M. Kemmerer*
 REG. C.E. NO. 212
 FOR LEGEND
 FEB 6 1950
 SANITATION DIVISION

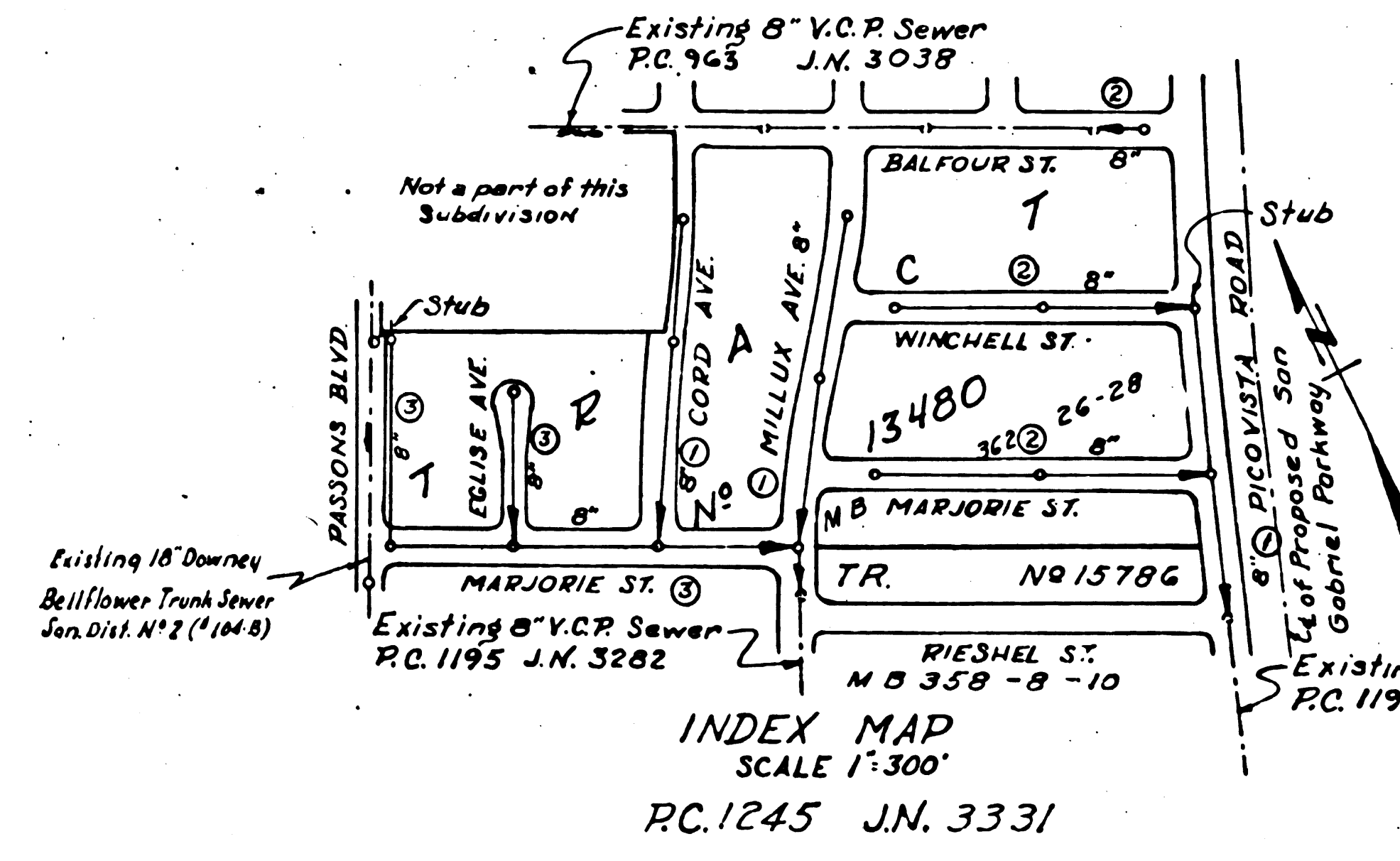
NOTE
 GRADES TO WHICH THIS IMPROVEMENT IS TO BE CONSTRUCTED ARE SHOWN ON PLANS AND PROFILES. GRADE POINTS FOR TOP OF CURB, CENTER LINE OF STREET OR CENTER LINE OF ALLEY ARE SHOWN BY CIRCLES ON PROFILES. AT ALL POINTS BETWEEN DESIGNATED POINTS THE GRADE SHALL BE ESTABLISHED AS TO CONFORM TO A STRAIGHT LINE DRAWN BETWEEN SAID DESIGNATED POINTS.
 ELEVATIONS ARE IN FEET ABOVE U. S. G. S. DATUM OR MEAN SEA LEVEL.
 THIS DRAWING AND THE DATA HEREON ARE HEREBY MADE A PART OF THE SPECIFICATIONS. BEFORE WORK CAN BE STARTED, THE CONTRACTOR MUST OBTAIN A PERMIT TO EXCAVATE IN COUNTY STREETS FROM THE L. A. COUNTY ROAD DEPT. IN SO MAIN ST., LOS ANGELES AND MAKE A DEPOSIT WITH THE COUNTY ENGINEER ROOM 3307 AT 10th AND B STREET, SUFFICIENT TO COVER THE COST OF CONSTRUCTION INSPECTION AND RECORD PLANS.
 IF WORK IS TO BE DONE IN A STATE HIGHWAY, A PERMIT MUST BE OBTAINED FROM THE STATE OF CALIFORNIA DIVISION OF HIGHWAYS, 120 SOUTH SPRING ST. AFTER MAKING THE DEPOSIT WITH THE COUNTY ENGINEER.

COUNTY OF LOS ANGELES, CALIFORNIA

APPROVED *[Signature]*
 COUNTY ENGINEER

APPROVED *[Signature]*
 CHIEF ENGINEER

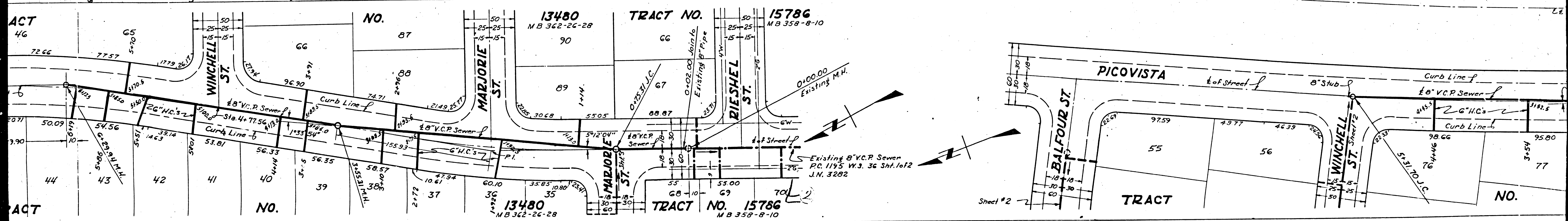
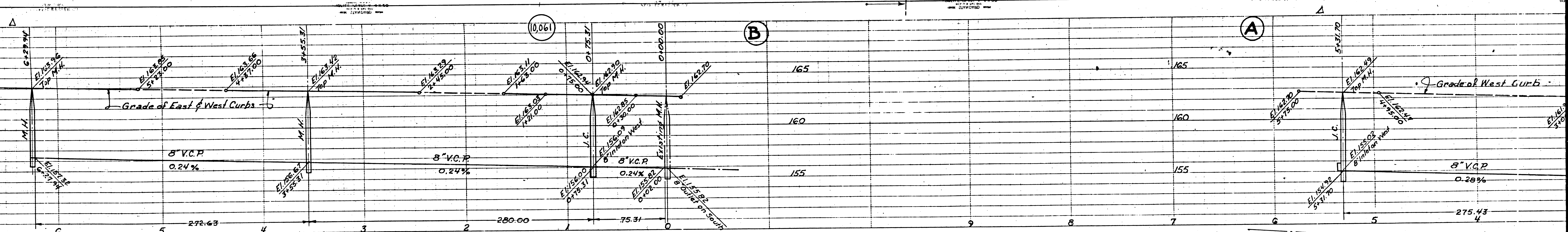
CHECKED BY *James T. Rutter* 1/31/1950
 OFFICE OF COUNTY ENGINEER, S. C. L. NO. 7103

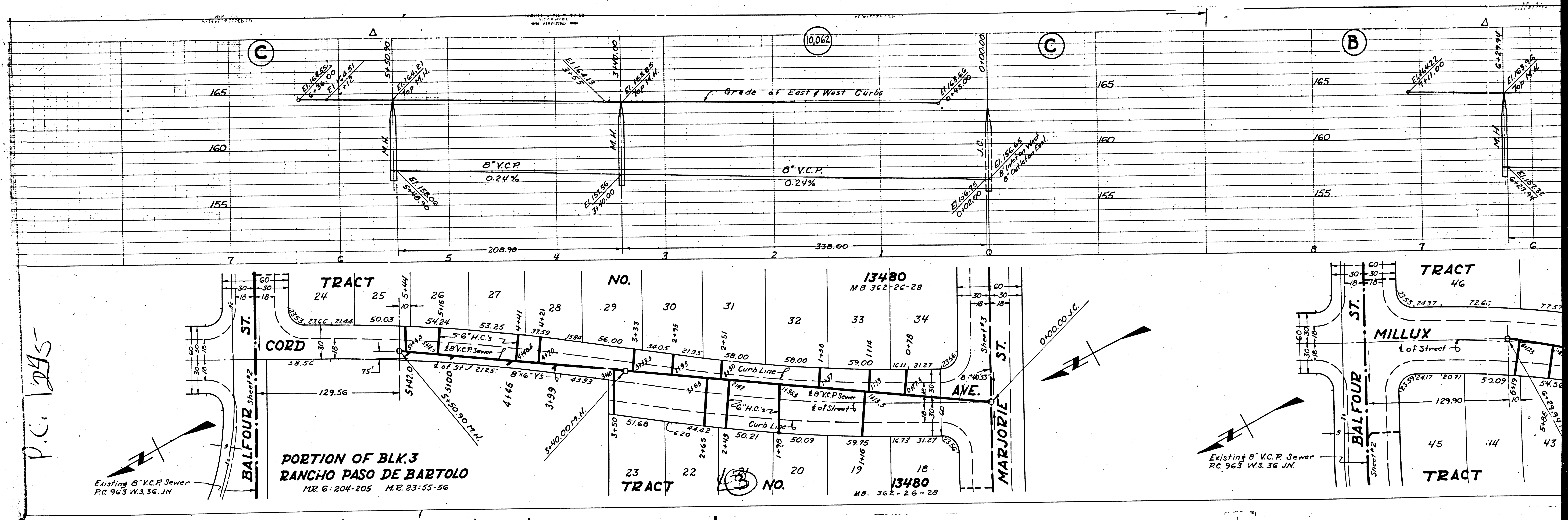


20

1

1000



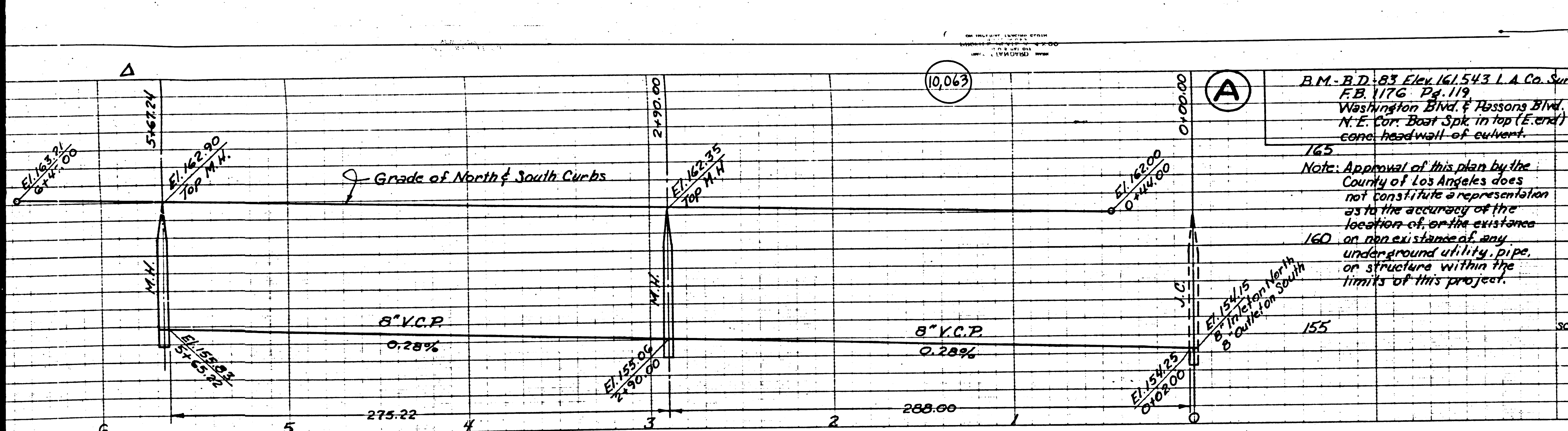


P.C. 295

Existing 8" V.C.P. Sewer
P.C. 963 W.S. 36 J.N.

PORTION OF BLK. 3
RANCHO PASO DE BARTOLO
M.B. 6: 204-205 M.R. 23: 55-56

Existing 8" V.C.P. Sewer
P.C. 963 W.S. 36 J.N.

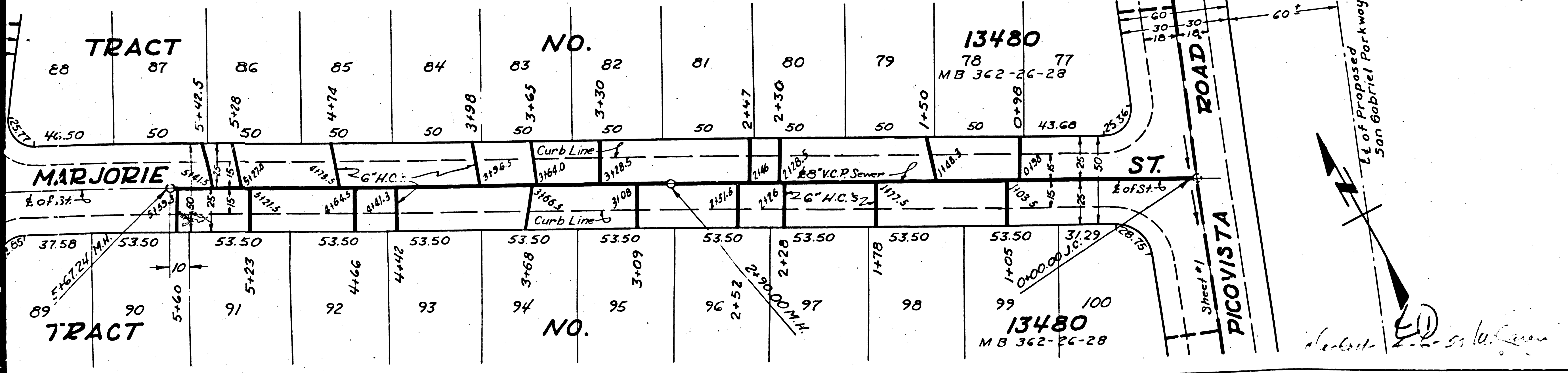


B.M. - B.D. 83 Elev. 161.543 L.A. Co. San. B.D. 176 Pg. 119 Washington Blvd & Rassons Blvd. N.E. Cor. Best Spk. in top (E. end) cone headwall of culvert.

Note: Approval of this plan by the County of Los Angeles does not constitute a representation as to the accuracy of the location of, or the existence of, or the existence of any underground utility, pipe, or structure within the limits of this project.

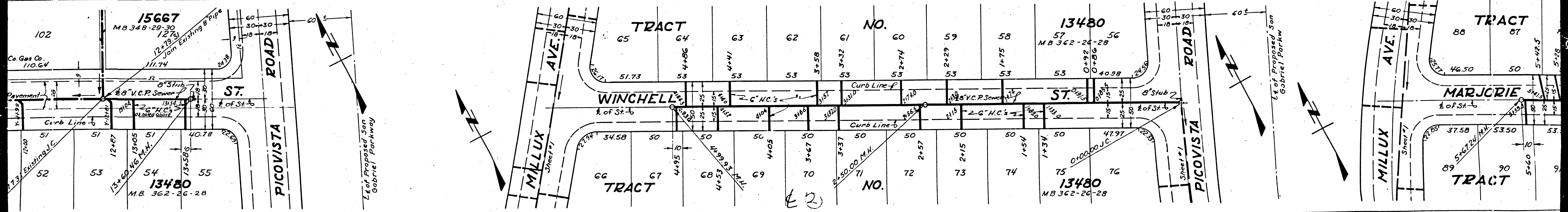
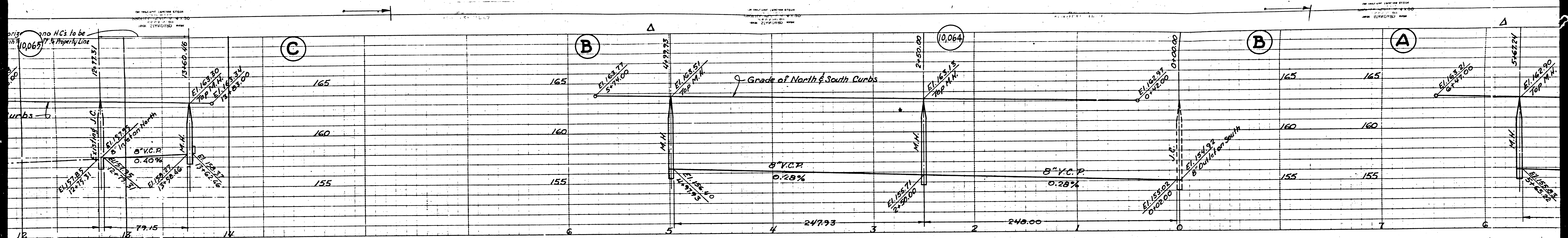
PROFILE ALIGNMENT AND GRADE OF SANITARY SEWERS TO BE CONSTRUCTED IN TRACT NO. 13480 ON MARJORIE STREET BETWEEN MILLUX AVE & PICOVISTA ROAD WINCHELL STREET BETWEEN MILLUX AVE & PICOVISTA ROAD BALFOUR STREET BETWEEN MILLUX AVE & PICOVISTA ROAD PRIVATE CONTRACT NO. 1245 W.S. 36

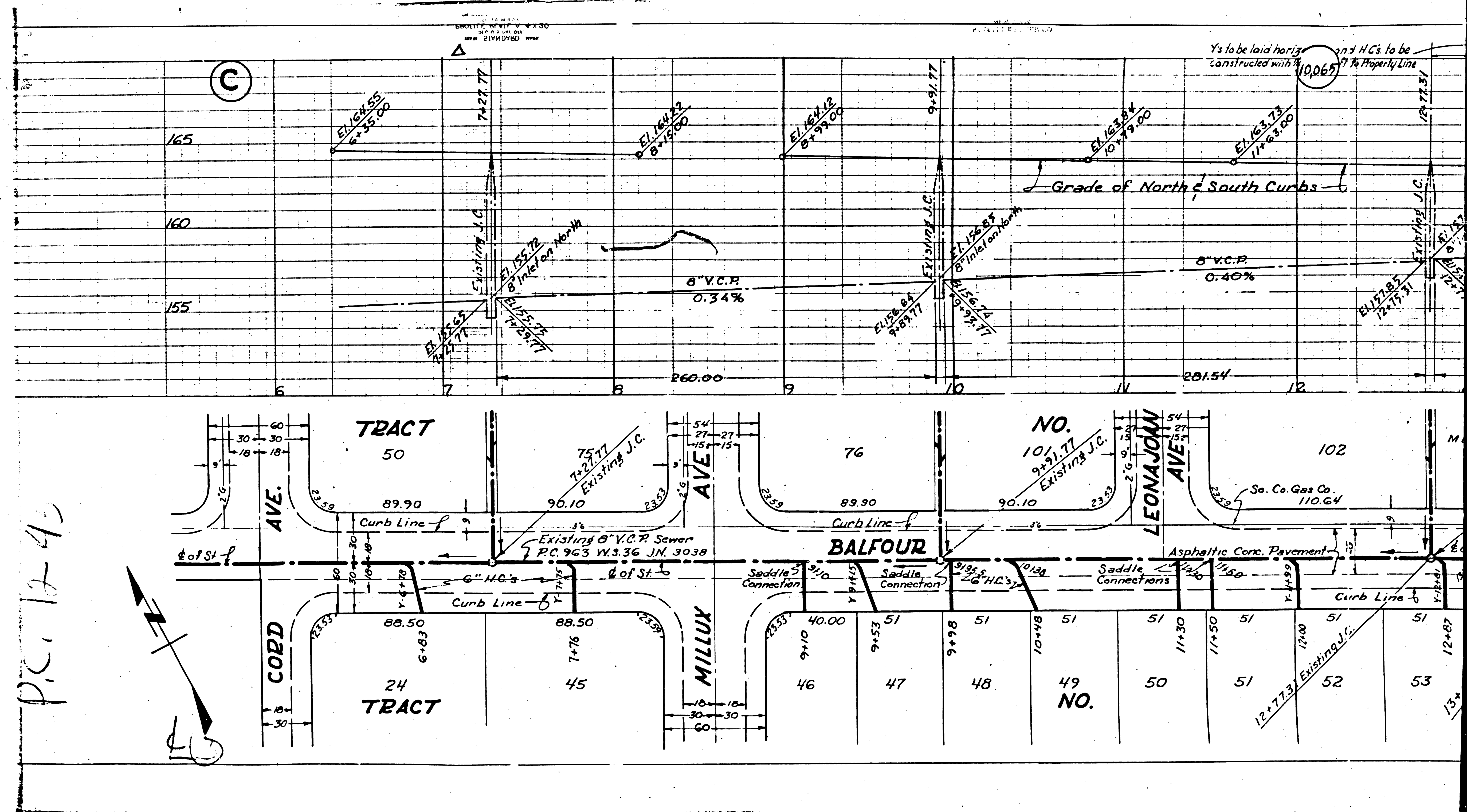
SHEET NO. 2 OF 3 SHEETS
 VERT. SCALE: 1" = 4' HORIZ. SCALE: 1" = 40' JANUARY 6, 1950
 PREPARED IN THE OFFICES OF KEMMERER ENG. CO.
 BY *J. T. Roston*
 REG. C.E. NO. 272
 FOR LEGEND SEE PLAN NO. 52-64
 SEE SHEET 1 FOR CONSTRUCTION NOTES



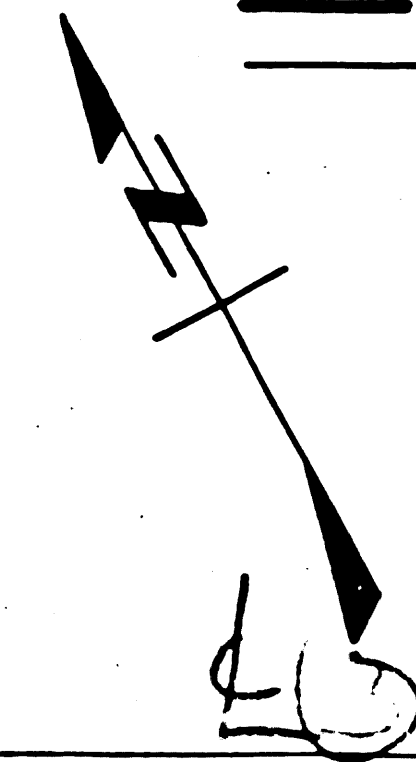
APPROVED *Ed. Smith* COUNTY ENGINEER
 APPROVED *Alvin* CHIEF ENGINEER SANITATION DISTRICT NO. 2
 CHECKED BY *James T. Roston* 1/21/50 OFFICE OF COUNTY ENGINEER, REG. C.E. NO. 7103
 REVISION CHECKED BY *James T. Roston* 2/12/50 OFFICE OF COUNTY ENGINEER, REG. C.E. NO. 7103
 (Corrected Sewergrades in Section C to agree with existing sewer) 2-6-50

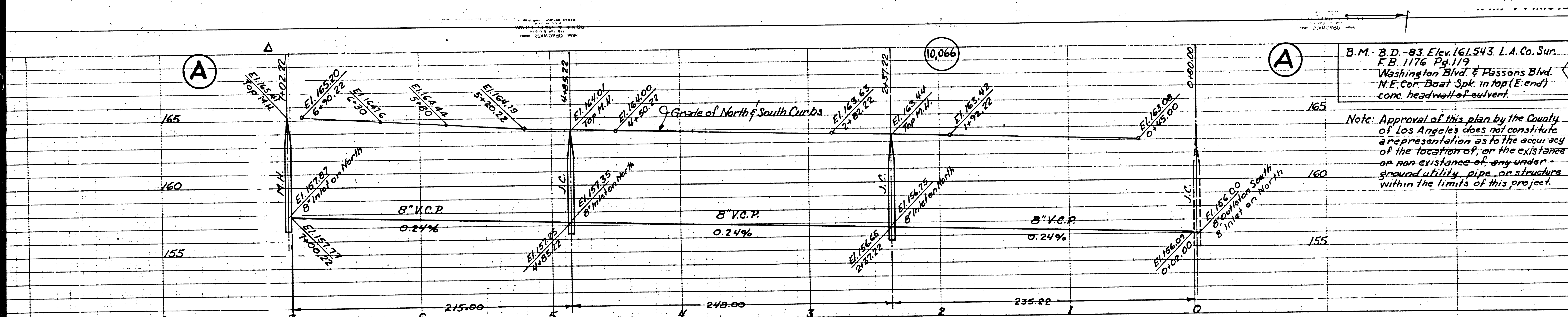
Trim Prints to this Line





P.C. 12-43

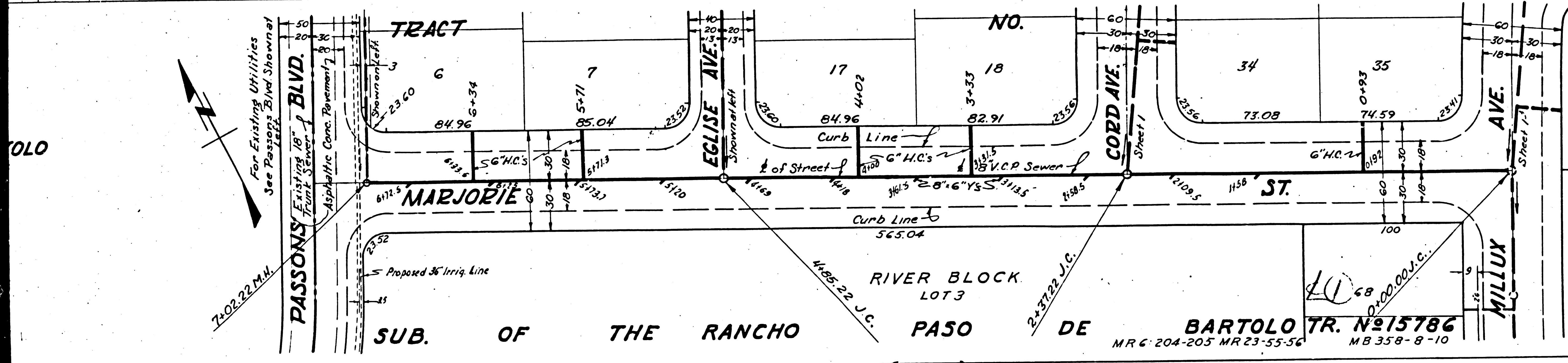




B.M. 10,066 - 83 Elev. 161.543 L.A. Co. Sur. E.B. 1176 Pg. 119
 Note: Approval of this plan by the County of Los Angeles does not constitute a representation as to the accuracy of the location of, or the existence or non-existence of any underground utility pipe or structure within the limits of this project.

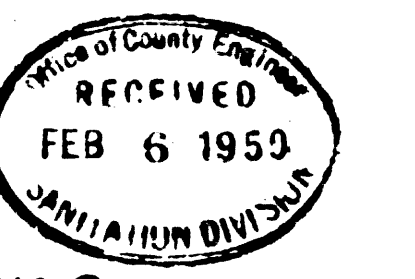
PROFILE ALIGNMENT AND GRADE OF
SANITARY SEWERS
 TO BE CONSTRUCTED IN
 TRACT NO. 13480
 ON
 MARJORIE STREET
 BETWEEN PASSONS BLVD. & MILLUX AVE.
 EGLISE AVE.
 NORTH OF MARJORIE ST.
SANITARY SEWER RIGHT OF WAY
 ON PASSONS BLVD. NORTH OF MARJORIE ST.
 PRIVATE CONTRACT NO. 1245
 W.S. 36
 SHEET NO. 3 OF 3 SHEETS
 VERT. 1" = 4'
 SCALE HOR. 1" = 40'
 JANUARY 6, 1950
 PREPARED IN THE OFFICES OF
KEMMERER ENG. CO.
 BY *J. B. Kemmerer*
 REG. C.E. NO. 272
 FOR LEGEND SEE PLAN NO. S-2-64
 SEE SHEET 1 FOR CONSTRUCTION NOTES

3



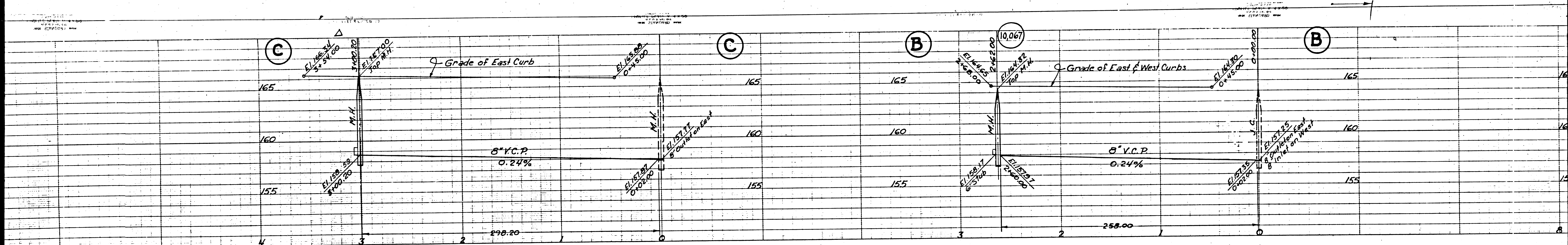
TRACT NO. 13480
 M.B. 362-26-28
 69
 TRACT NO. 15786

APPROVED *E. E. Arnold* COUNTY ENGINEER
 APPROVED *A. L. ...* CHIEF ENGINEER
 SANITATION DISTRICT NO. 2
 CHECKED BY *James T. ...* 1/31/50
 OFFICE OF COUNTY ENGINEER, REG. C.E. NO. 7103



BARTOLO

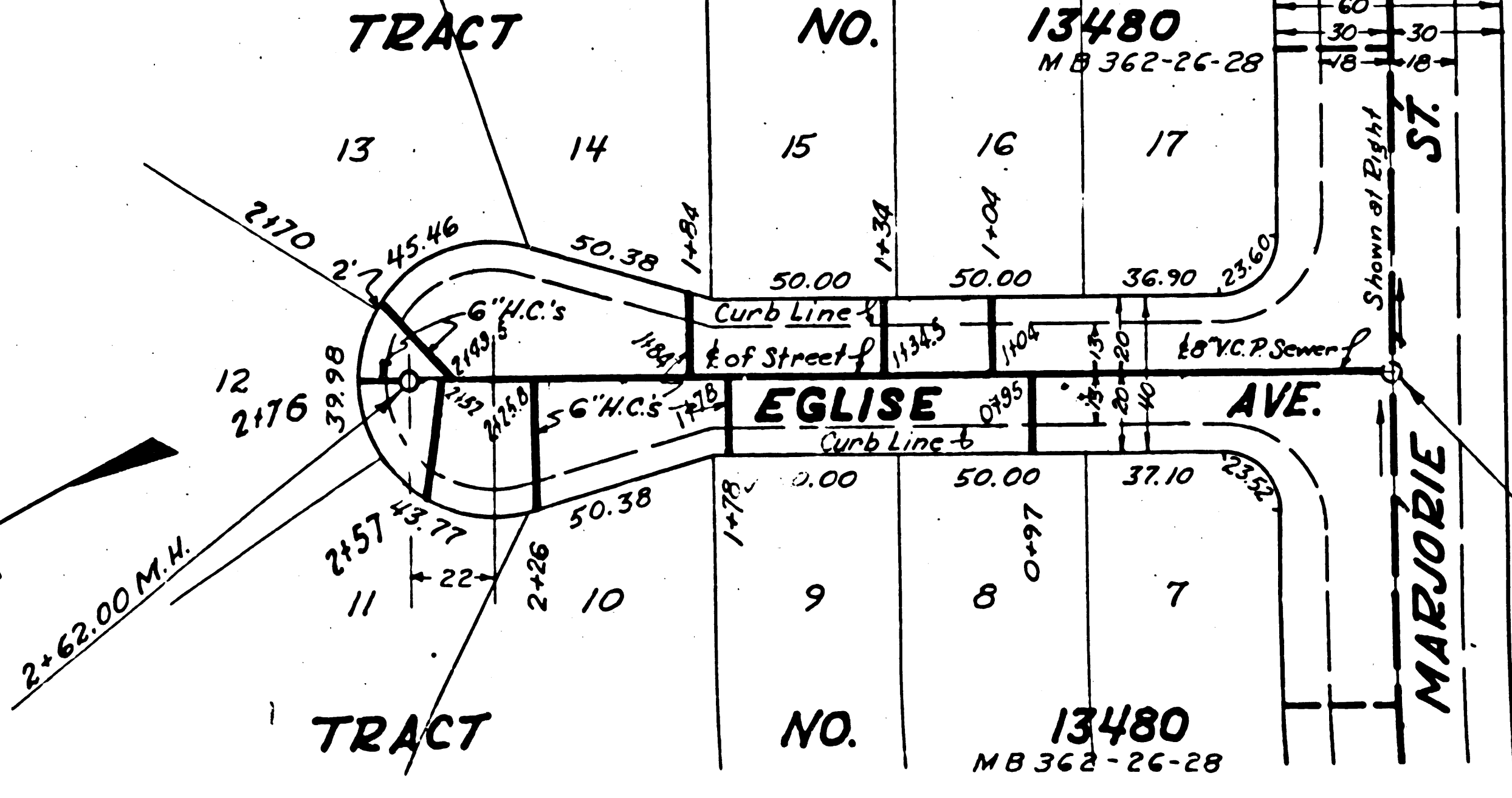
RIVER BLOCK LOT 3
 PASO DE BARTOLO TR. NO. 15786
 M.B. 358-8-10
 M.R.C. 204-205 MR 23-55-56



SUB. OF THE RANCHO PASO DE BARTOLO
 M.R.G. 204-205 M.R. 23:55-56
RIVER BLOCK
 LOT 3
 4' Open Conc. Irrig. Ditch
 San Gabriel Valley Water

TRACT NO.	NO.	NO.	NO.	NO.	NO.
1	2	3	4	5	6
SEWER 64.16	50	RIGHT 50	OF 50	1443	WAY 45.24

SUB. OF THE RANCHO PASO DE BARTOLO
 M.R.G. 204-205 M.R. 23:55-56
RIVER BLOCK
 LOT 3
 Proposed 36" Conc. Irrig. Line



LOT 3
RIVER BLOCK
SUB. OF THE RANCHO PASO DE BARTOLO
 M.R.G. 204-205 M.R. 23:55-56

- 3" x 20" M.H.
- 4" Pico Co. Water Dist. 7 East
- 10" So. Co. Gas 4" East
- 2" So. Co. Gas 4" East
- 2" So. Co. Gas 3" East
- 6" Texas Co. Gas 2" East
- 3" Texas Co. Oil 2" East
- 3" Texas Co. Gasoline 2" East
- 10" So. Co. Gas 1" East
- 0+00.00 M.H.
- 2+62.00 M.H.
- 0+00.00 J.C.