

11,509

- (1) Use standard manhole frame & cover, S-a-109, except as noted.
- (2) Use standard strength pipe, except as noted.
- (3) Use cement mortar for all vitrified clay pipe joints, in Public Street
- (4) All structures shall be brick sewer structures, S-a-104, except as noted.
- (5) Trench in Public Street to be resurfaced to meet Los Angeles County Road Dept. requirements.

Provide stakes on the property lines or property lines produced, at right angles to the sewer line at the center line of each manhole.

Note:
 No representative of the County Engineer will survey or lay out any portion of the work. The Owner or his authorized Representative shall furnish the County Engineer with grade sheets and stations of all house connections and Y Branches and shall provide stakes for them at their proper locations with stationing plainly marked. Any change of location shall be requested in writing by the Owner or his representative. No revisions shall be made in these plans without approval of the County Engineer.
 Before Liquid Industrial Waste is disposed of in the sewer, detailed plans therefore shall be submitted to and a Permit obtained from the County Engineer.

P.C. #1246 J.N. 3332

**PROFILE, ALIGNMENT AND GRADE OF
 SANITARY SEWER
 TO BE CONSTRUCTED IN
 BROOKLYN AVE.
 BETWEEN COLLEGIAN AVE. & VON CLICK AVE.**

**SITE DISTRIBUTION
 SYSTEMS
 PRIVATE CONTRACT NO. 1246
 W.S. 36
 SHEET 1 OF 3 SHEETS**

Scale: Vert. 1"=4'
 Hor. 1"=40'

PREPARED IN THE OFFICES OF
JOHN S. GREGORY

BY: John S. Gregory R.E. No. 6353

Robt. W. Storuss - Storuss and Rowe
 MECHANICAL ENGINEERS

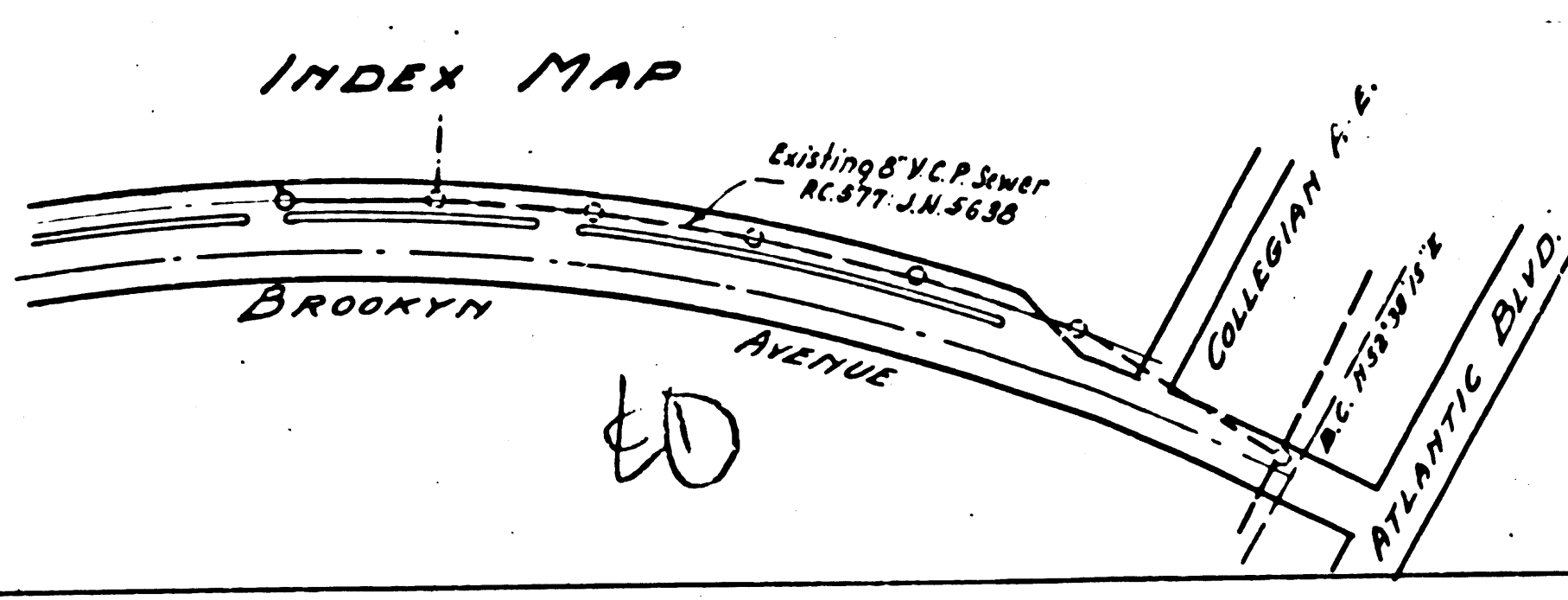
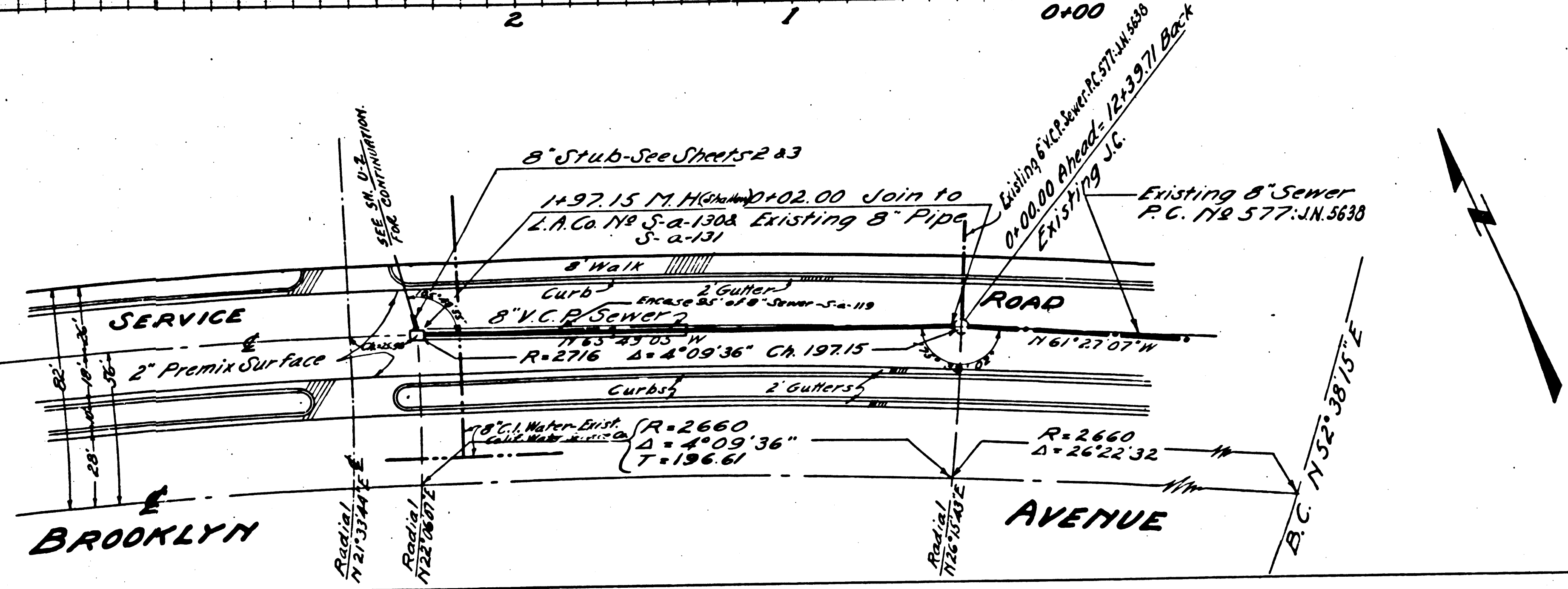
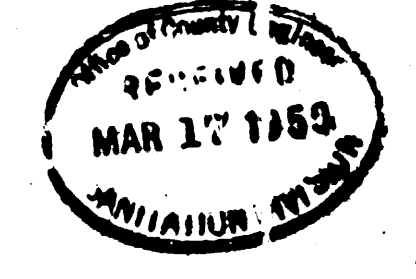
FOR LEGEND See Plan No. S-a-64
George M. Lindsey, Robert W. Lindsey
 ARCHITECTS

NOTE:
 Grades to which this improvement is to be constructed are shown on plans and profile. Grade points for top of curb, center line of street or center line of alley are shown by circles on profiles. At all points between designated points the grade shall be established so as to conform to a straight line drawn between said designated points.
 Elevation herein given above U.S.C.S. Datum or mean sea level.
 This drawing and the data herein are hereby made a part of the specifications.
 Work shall be constructed according to specifications on file in the office of the County Engineer and shall be prosecuted in the presence of the County Engineer.
 Before work can be started, the contractor must obtain a permit to construct in County streets from the L.A. County Road Dept., 211 So. Main St., and make a deposit with the County Engineer, 828 L.A. Co. Eng. Bldg., sufficient to cover the cost of construction inspection and record plans.
 Approval of this plan by the County at its public works office does not constitute a representation as to the accuracy of the location of, or the existence of, any underground utility, pipe, structure within the limits of this project.

COUNTY OF LOS ANGELES, CALIFORNIA

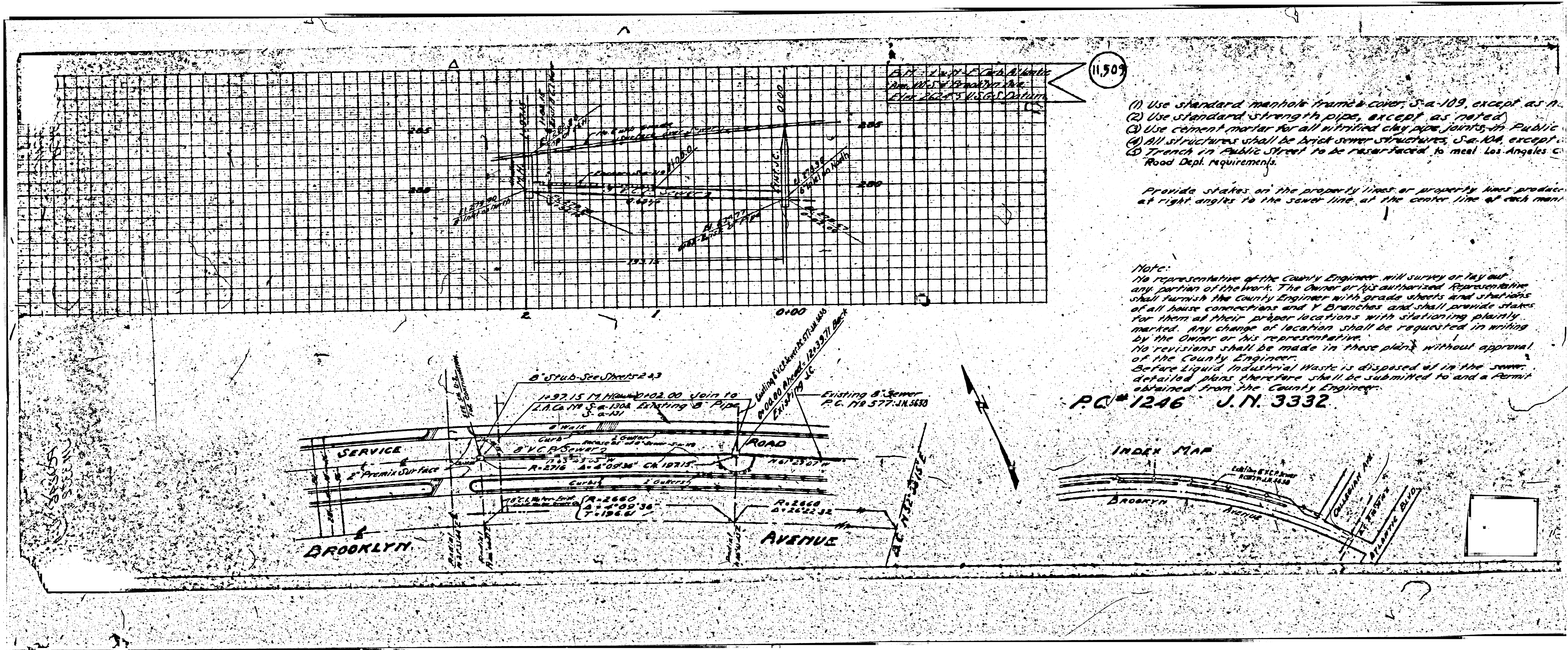
APPROVED John S. Gregory
 COUNTY ENGINEER

APPROVED John S. Gregory
 COUNTY ENGINEER



CHECKED BY A. H. ... JUN 1950
 OFFICE OF COUNTY ENGINEER, 106 C.E. BLDG.

SHEET U-1



11.50

- (1) Use standard manhole frame & cover, S-a-109, except as noted.
- (2) Use standard strength pipe, except as noted.
- (3) Use cement mortar for all vitrified clay pipe joints in Public Street.
- (4) All structures shall be brick sewer structures, S-a-104, except as noted.
- (5) Trench in Public Street to be raser-faced to meet Los Angeles Road Dept. requirements.

Provide stakes on the property lines or property lines produced at right angles to the sewer line at the center line of each manhole.

Note:
 No representative of the County Engineer will survey or lay out any portion of the work. The Owner or his authorized Representative shall furnish the County Engineer with grade sheets and stationing of all house connections and Y Branches and shall provide stakes for them at their proper locations with stationing plainly marked. Any change of location shall be requested in writing by the Owner or his representative. No revisions shall be made in these plans without approval of the County Engineer. Before liquid Industrial Waste is disposed of in the sewer, detailed plans therefore shall be submitted to and a Permit obtained from the County Engineer.

P.C. 1246 J.N. 3332

