

**PROFILE, GRADE AND ALIGNMENT OF
SANITARY SEWERS
TO BE CONSTRUCTED IN
BELLFLOWER BLVD.
BETWEEN CENTRALIA ST. AND ADEENMOOR AVE
ADENMOOR AVE.
BETWEEN CENTRALIA ST. AND BELLFLOWER BLVD.
BRIERCREST AVE.
BETWEEN CENTRALIA ST. AND HARVEY WAY
IN TRACT NO. 16222
AND IN A SANITARY SEWER RIGHT OF WAY
BETWEEN ADEENMOOR AVE & BRIERCREST AVE**

**PRIVATE CONTRACT NO. 1251
W.S. 31
SHEET 1 OF 3 SHEETS**

DATE: APRIL, 1950
PREPARED IN THE OFFICES OF
ENGINEERING SERVICE CORPORATION

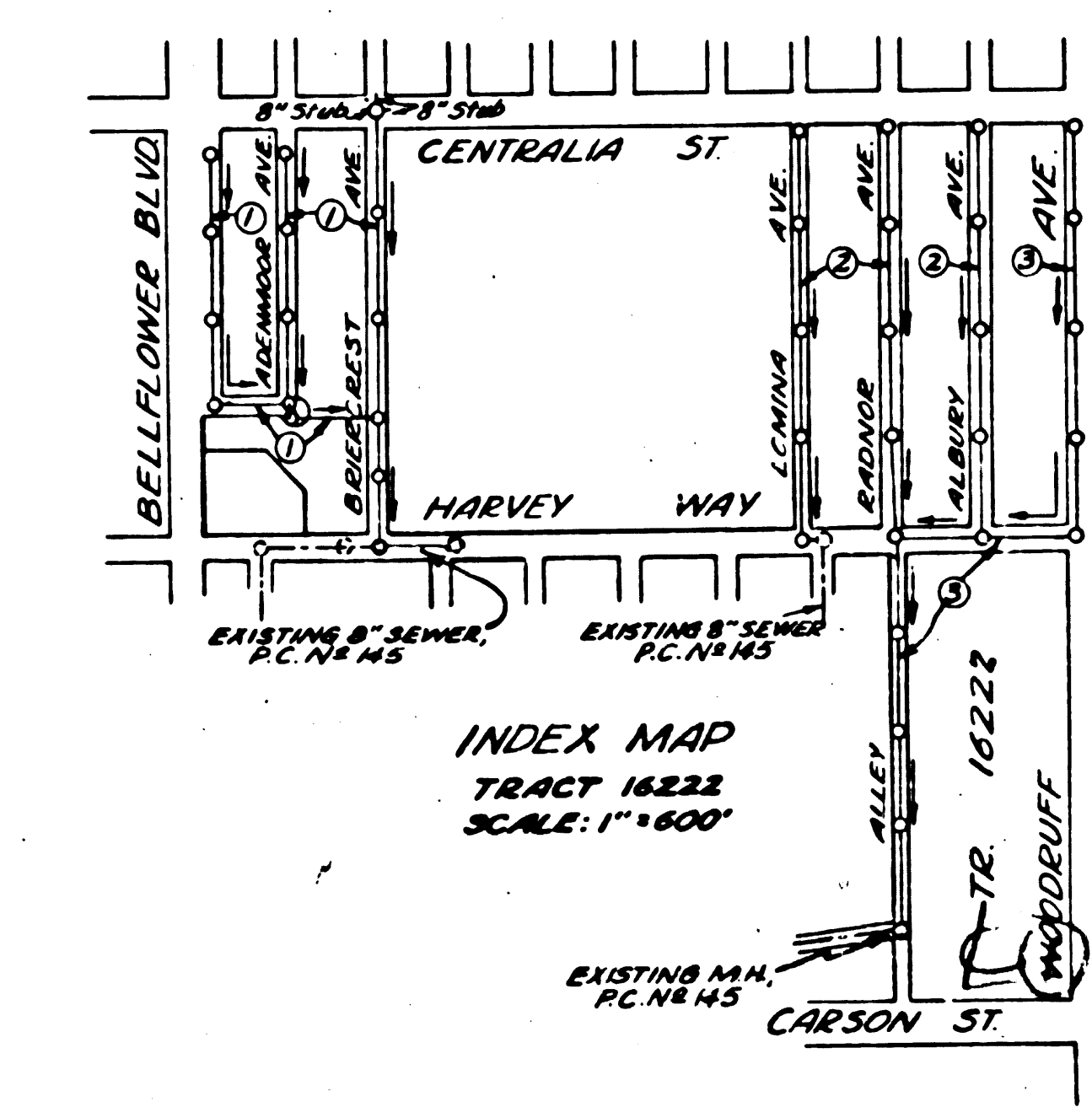
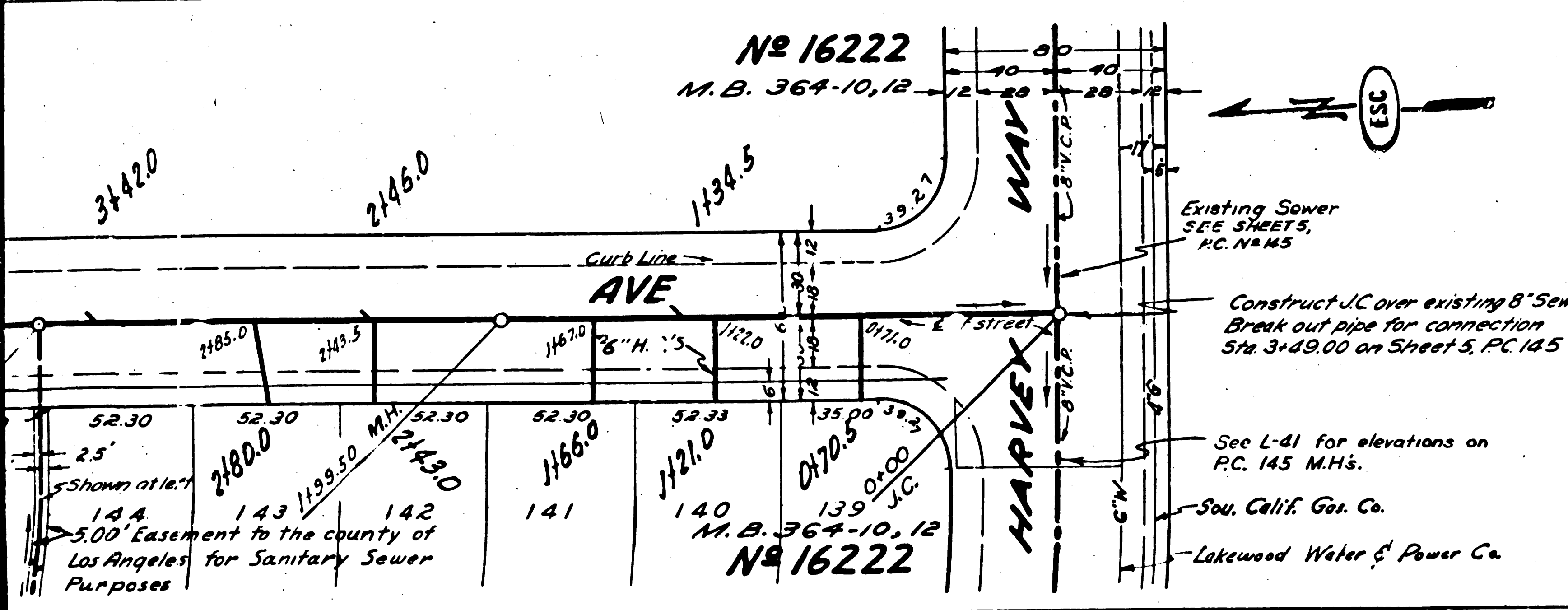
BY *E.F. Keenig*
R.S. C. & P. 111

ENGINEERING SERVICE CORPORATION
1127 W. WASHINGTON BLVD.
LOS ANGELES 15, CALIF.

REVISIONS:
Revised Grade on Adenmoor Ave. 4-27-50

DESIGNED BY *S.L.*
CHECKED BY *MLK*
SUBMITTED BY *M. Wallace*

BY STRUCTURES C.O.D.
IN O. NO. 5977-12 DWG. NO. 12-7-3-1 DATE 4-6-50 SCALE 1"=40' L-1



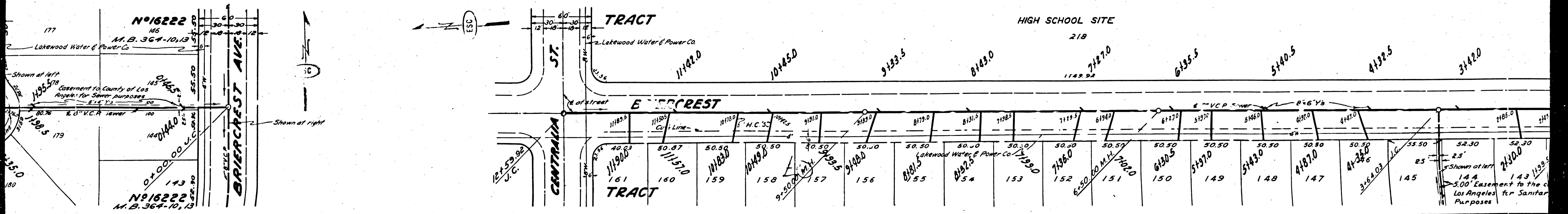
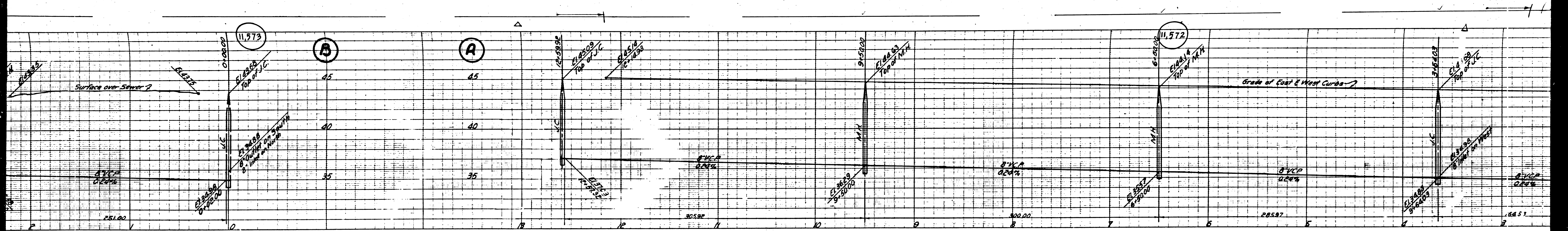
NOTES:
GRADES TO WHICH THIS IMPROVEMENT IS TO BE CONSTRUCTED ARE SHOWN ON PLANS AND PROFILE
GRADES FOR EXISTING UTILITIES ARE SHOWN BY DASHED LINES. CENTER LINE OF EXISTING UTILITIES ARE SHOWN BY
DASHED LINES. GRADES BETWEEN POINTS OF GRADE POINTS THE GRADE SHALL BE ESTABLISHED
AS SHOWN ON PLANS. ALL POINTS BETWEEN GRADE POINTS SHALL BE ESTABLISHED AS SHOWN
ON PLANS. ALL POINTS BETWEEN GRADE POINTS SHALL BE ESTABLISHED AS SHOWN ON PLANS.
ELEVATIONS ARE IN FEET AS NOTED. GRADES ARE IN PERCENTS.
THIS CONTRACT AND THE SPECIFICATIONS ARE HEREBY MADE A PART OF THE SPECIFICATIONS.
WORK SHALL BE CONSTRUCTED IN ACCORDANCE WITH THE SPECIFICATIONS OF THE COUNTY
ENGINEER AND SHALL BE SUBJECT TO THE SUPERVISION OF THE COUNTY ENGINEER.
THE WORK SHALL BE SUBJECT TO THE SUPERVISION OF THE COUNTY ENGINEER.
THE COUNTY ENGINEER SHALL BE RESPONSIBLE FOR THE LOCATION OF ALL UNDERGROUND UTILITIES, PIPE, OR
OTHER STRUCTURES WHICH MAY BE ENCOUNTERED DURING THE COURSE OF CONSTRUCTION IN
THE LOCATION OF THE PROJECT.
APPROVAL OF THIS PLAN BY THE COUNTY OF LOS ANGELES DOES NOT CONSTITUTE A REPRESENTATION
OR WARRANTY FOR THE EXISTENCE OR LOCATION OF ANY UNDERGROUND UTILITY, PIPE, OR
OTHER STRUCTURES WHICH MAY BE ENCOUNTERED DURING THE COURSE OF CONSTRUCTION IN
THE LOCATION OF THE PROJECT. THIS NOTE APPLIES TO ALL SHEETS.
COUNTY OF LOS ANGELES, CALIFORNIA

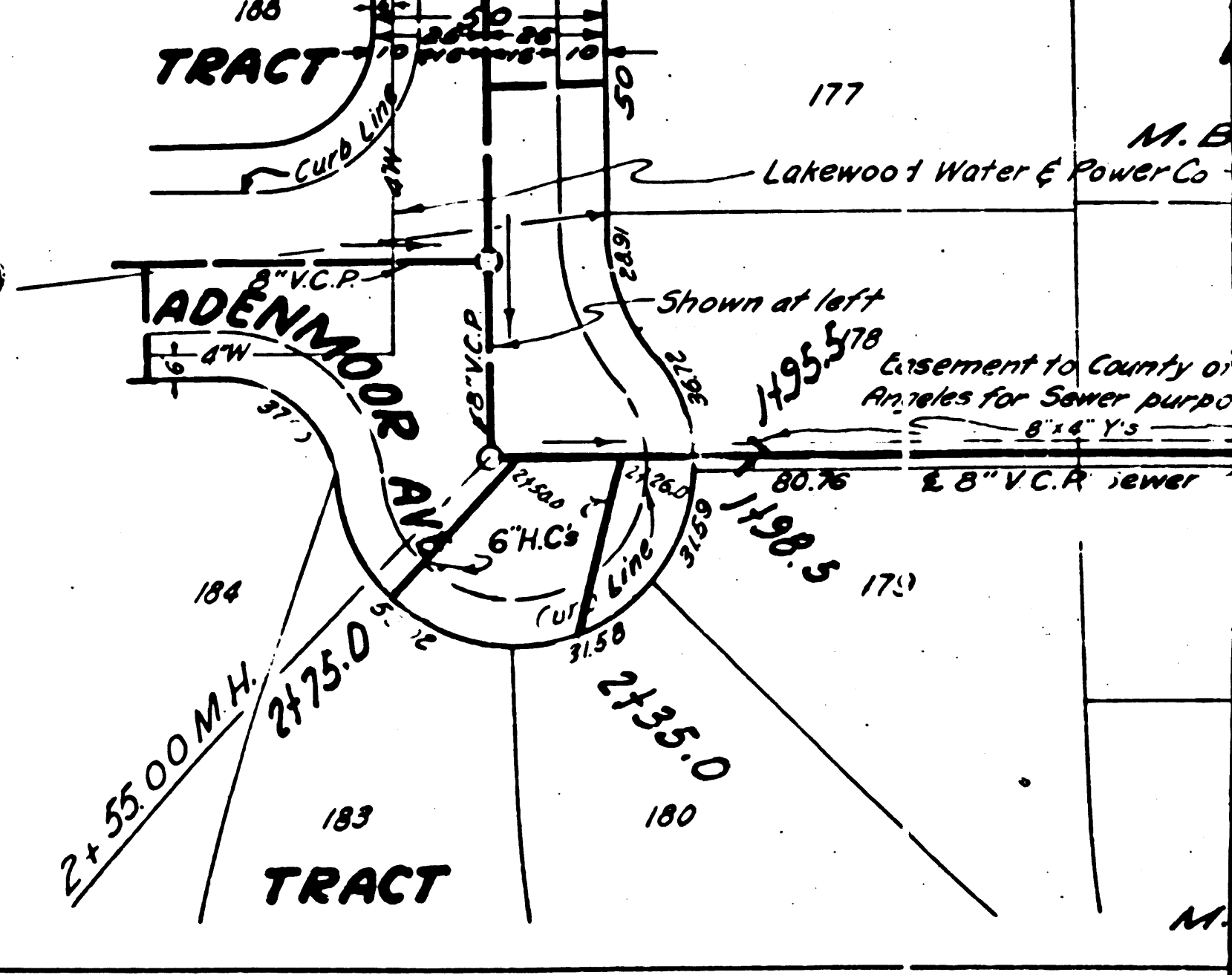
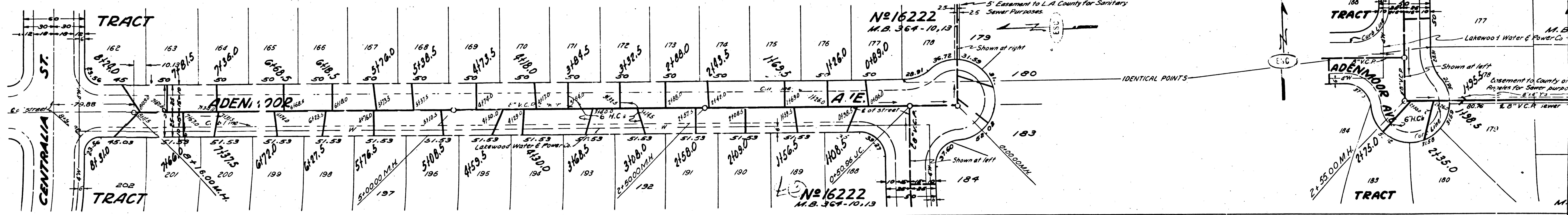
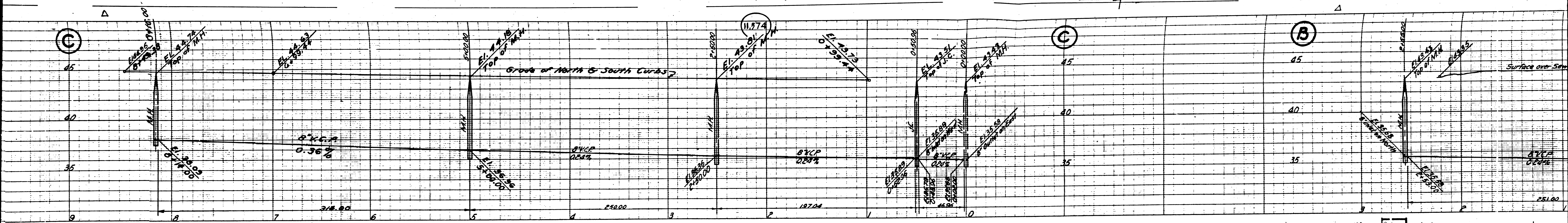
APPROVED: *E.F. Keenig*
COUNTY ENGINEER

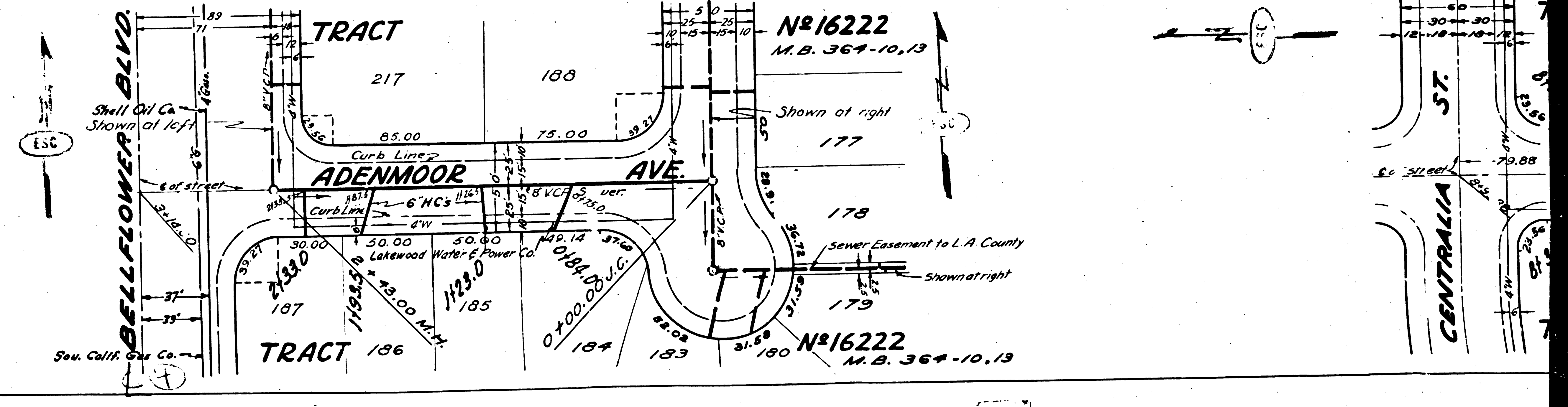
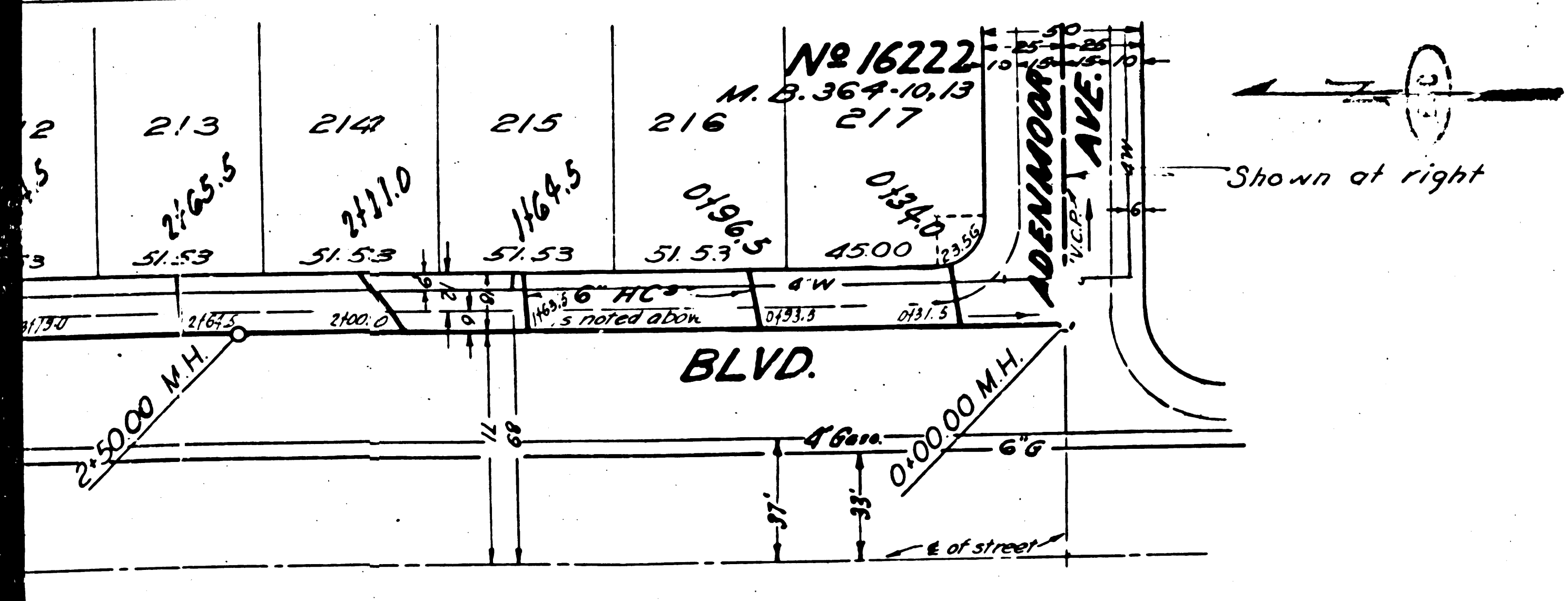
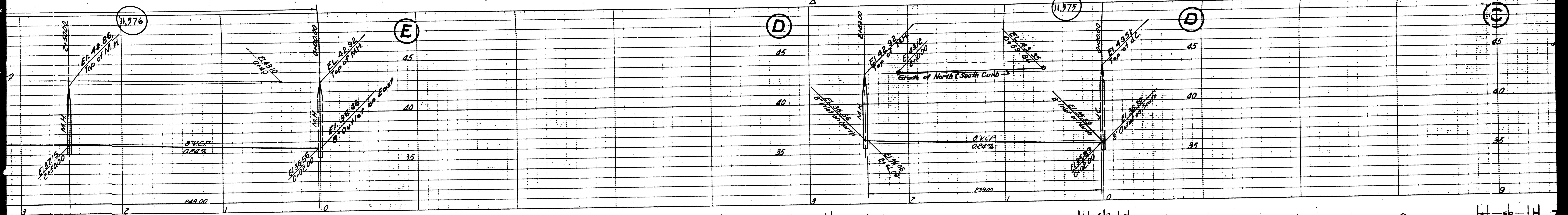
APPROVED: *W. Wallace*
SANITARIUM DISTRICT NO. 3

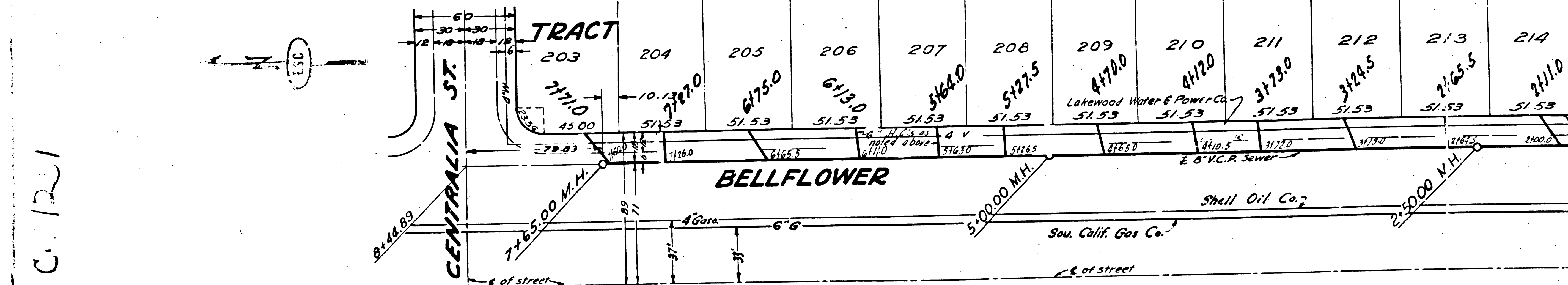
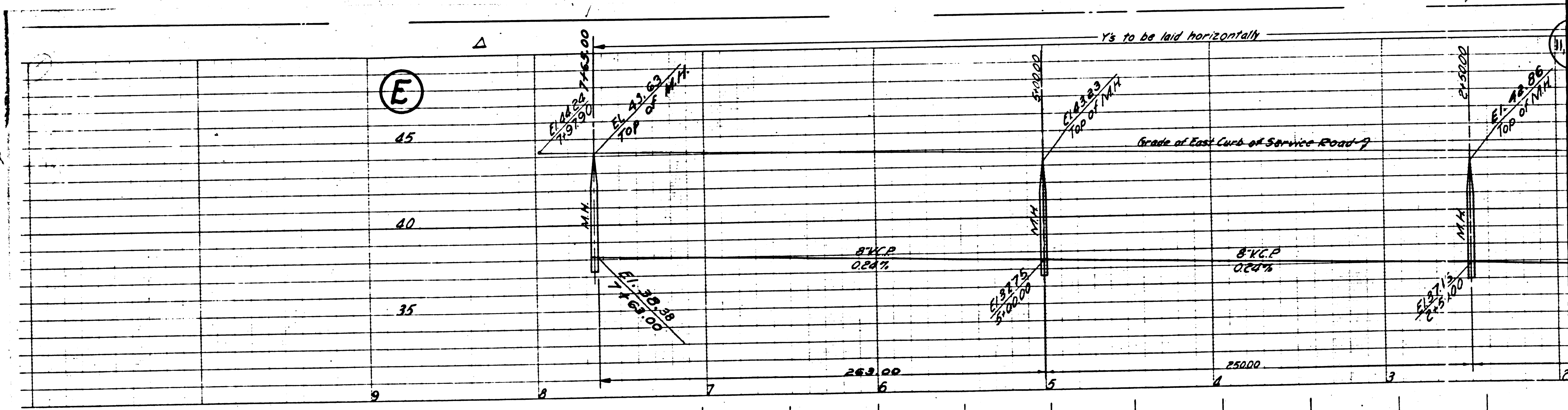
RECEIVED: *A. Foster Collins* 4-30-50
COUNTY ENGINEER, LOS ANGELES, CALIF. 1950

BELLFLOWER BLVD
ADENMOOR AVE
BRIERCREST AVE
HARVEY WAY
CENTRALIA ST
CARSON ST



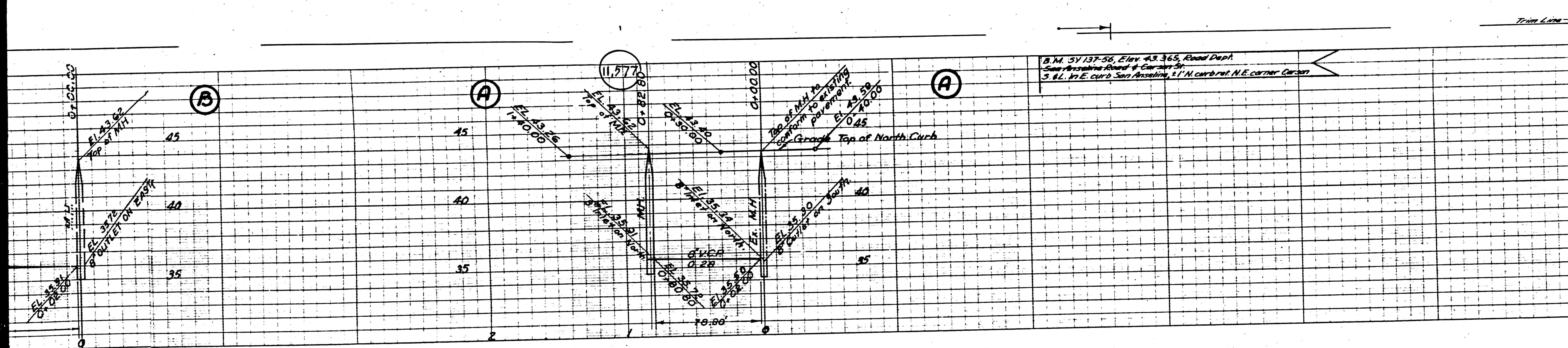




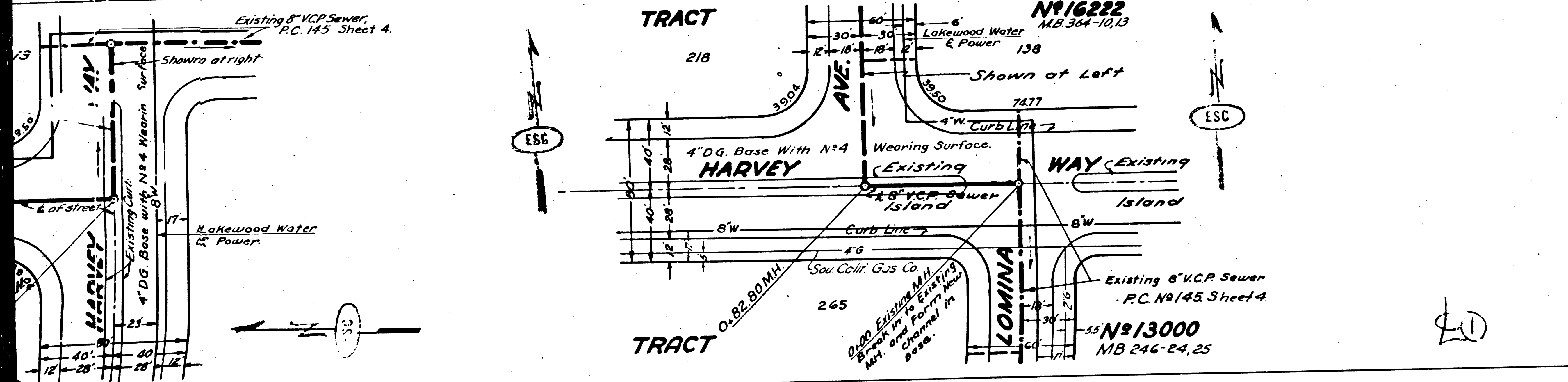


P.C. 121

EO



**PROFILE GRADE AND ALIGNMENT OF
SANITARY SEWERS**
 TO BE CONSTRUCTED IN
LOMINA AVE.
 BETWEEN HARVEY WAY AND CENTRALIA STREET,
RADNOR AVE.
 BETWEEN HARVEY WAY AND CENTRALIA STREET,
ALBURY AVE.
 BETWEEN HARVEY WAY AND CENTRALIA STREET,
HARVEY WAY.
 BETWEEN LOMINA AVE NORTH AND SOUTH
 IN TRACT N^o 16222
 PRIVATE CONTRACT NO. 1251
 W. S. 31
 SHEET 2 OF 3 SHEETS
 VERT. 1" = 4'
 HOR. 1" = 40'
 APRIL 1950
 PREPARED IN THE OFFICES OF
ENGINEERING SERVICE CORPORATION
 BY E. F. Keagy
 REG. C. E. 142 1942

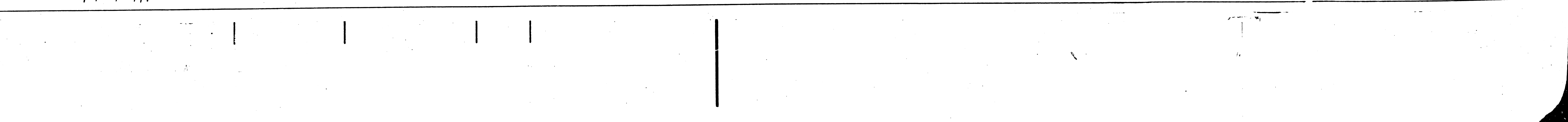
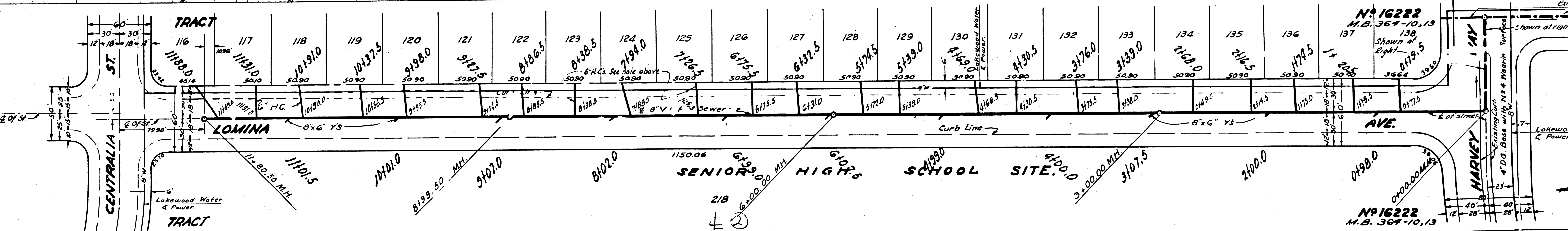
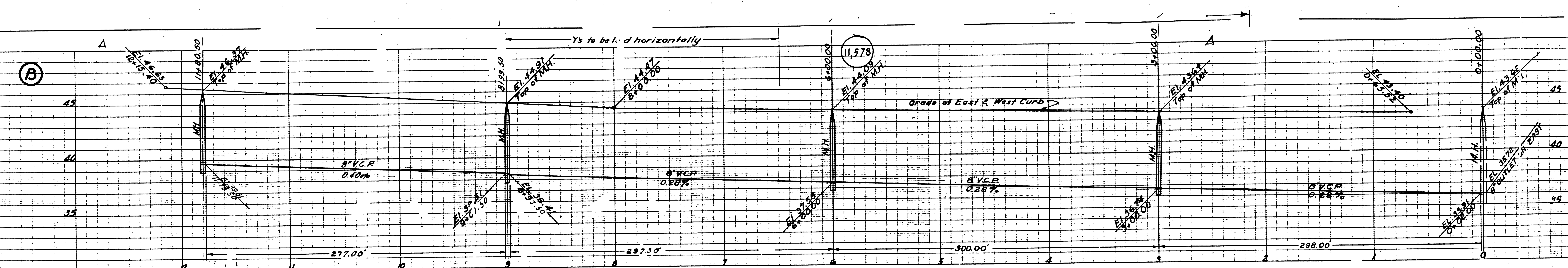


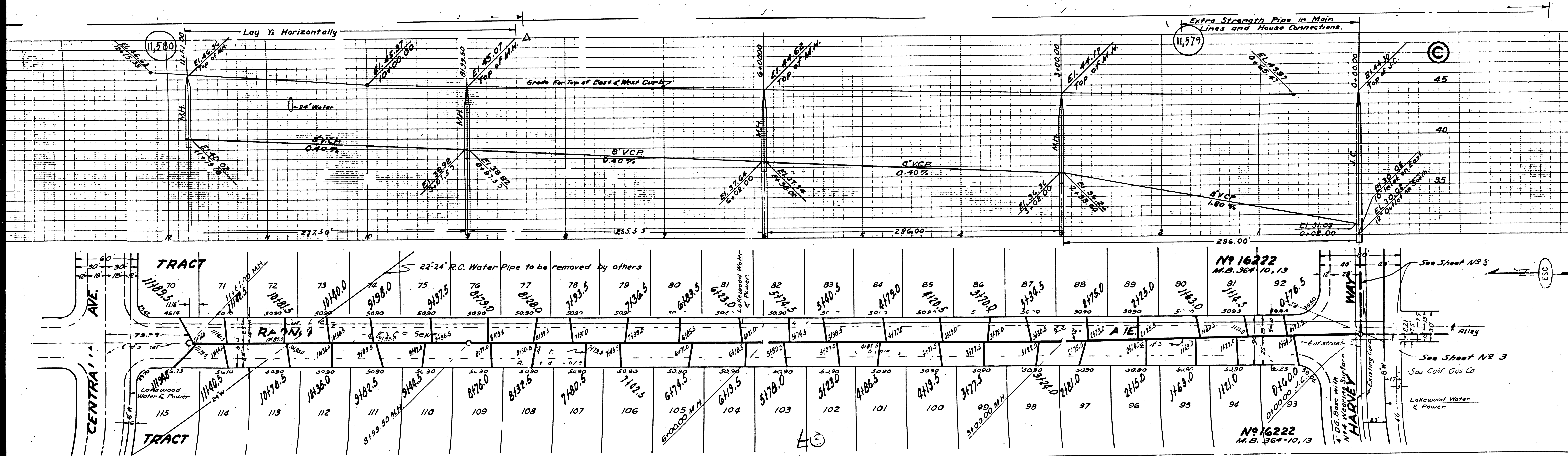
ENGINEERING SERVICE CORPORATION 1127 W. WASHINGTON BLVD. LOS ANGELES 15, CALIF.	
REVISIONS	TRACED BY <u>S.L.</u>
Revised Alignment of Radnor Ave. 6-27-50	DESIGD BY <u>M.L.K.</u>
Revised Grades on Lomina, Albury Ave. 6-27-50	CHKD BY <u>ms</u>
	SUBMITTED <u>M. Ballup</u>
WITH STRUCTURES ON D W. S. NO. TRNG NO. DATE SCALE I B F D 5977-12 12-9-3-1 4-6-50 1" = 40' 1-25	

FOR LEGEND
 SEE PLAN NO. S-4-64
 FOR CONSTRUCTION NOTES SEE SHEET 1.
 COUNTY OF LOS ANGELES, CALIFORNIA
 APPROVED E. F. Keagy
 COUNTY ENGINEER
 APPROVED Allen
 CHIEF OF PUBLIC WORKS
 SANITATION DISTRICT NO. 3
 CHECKED Allen 4-30-50
 OFFICE OF COUNTY ENGINEER REG. C. E. 142 1942

SEE PLAN NO. S-4-64
 TRACT N. 16222
 W. S. 31
 SHEET 2 OF 3

April 11-29-50





11,580

11,579

Lay 1/2 Horizontally

Extra Strength Pipe in Main Lines and House Connections.

Grade for Top of East & West Curbs

24" Water

8" VCP

8" VCP

8" VCP

8" VCP

TRACT

M.B. 367-10, 13

No 16222

M.B. 367-10, 13

22" R.C. Water Pipe to be removed by others

See Sheet No 3

See Sheet No 3

Saw Coll. Gas Co

Lakewood Water & Power

See Sheet No 3

Lakewood Water & Power

See Sheet No 3

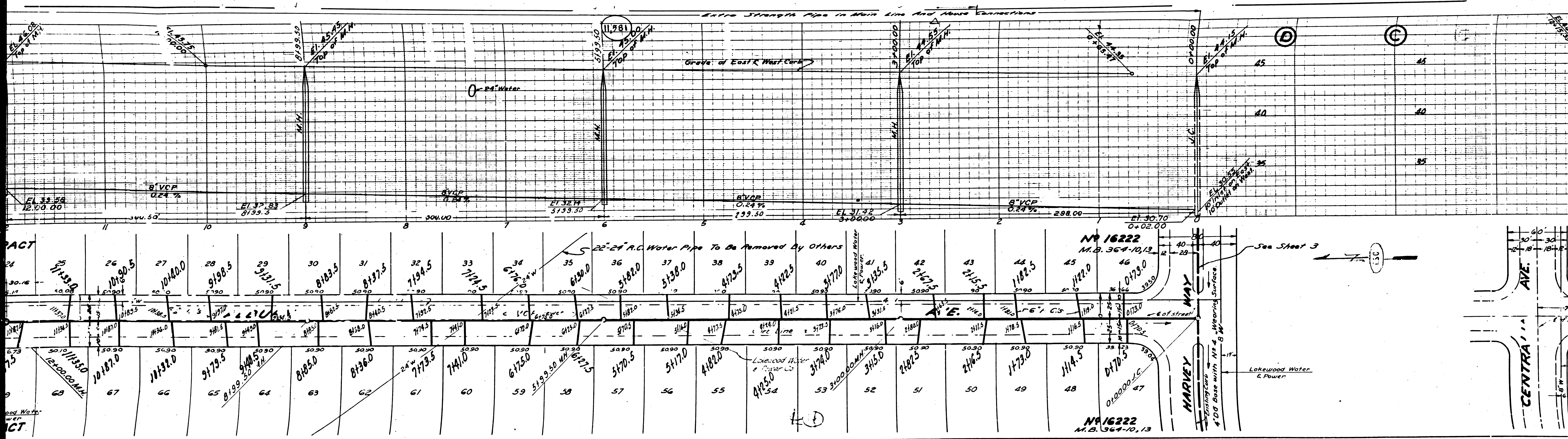
Lakewood Water & Power

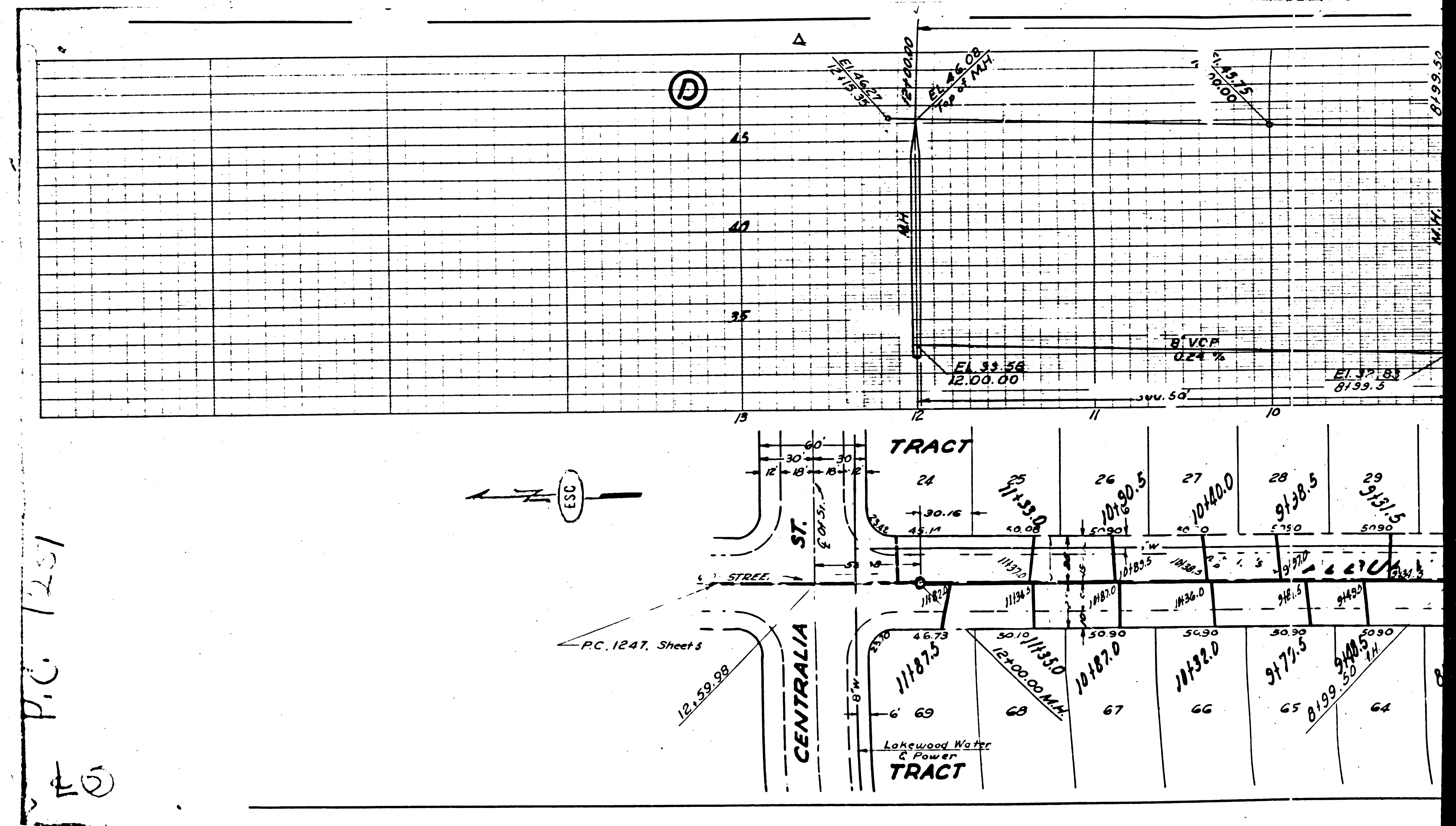
See Sheet No 3

Lakewood Water & Power

See Sheet No 3

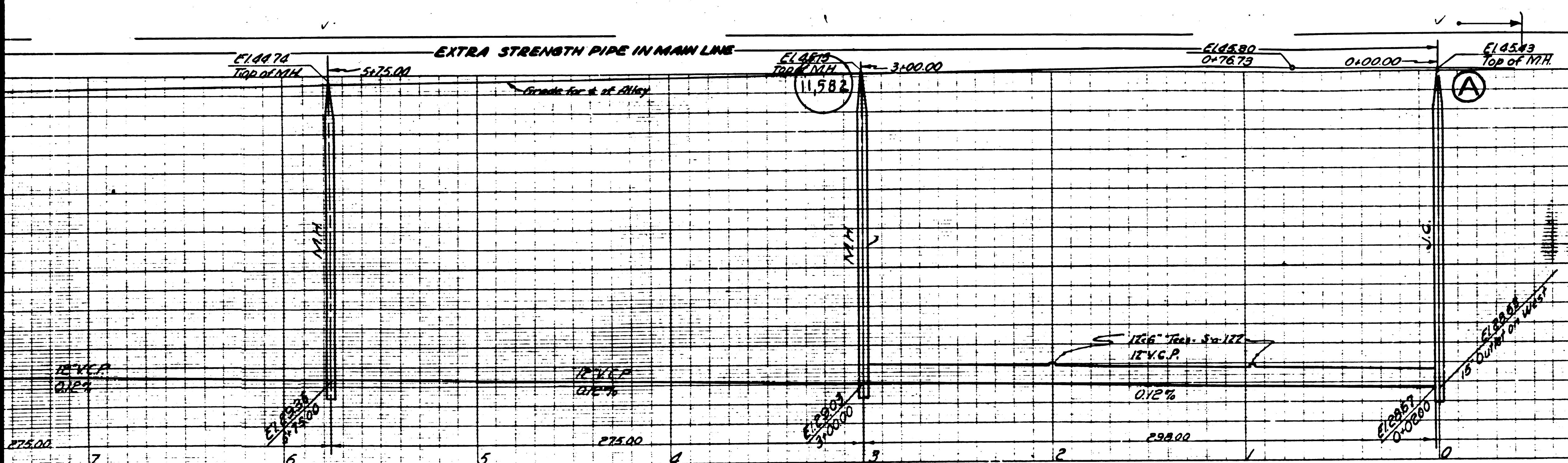
Lakewood Water & Power





P.C. 1251

125



9. A.A. 57134-56, C1 42.212, Road Dept.
 Woodruff Blvd. & Harvey Way.
 S.T.W. & intersection.

10. M. 57139-56, E1 45.637, Road Dept.
 Woodruff Blvd. & Carson St.
 L.N. in Woodruff, T.F.S. curd ref. @
 S. Warner Carson.

PROFILE, GRADE AND ALIGNMENT OF
SANITARY SEWERS
 TO BE CONSTRUCTED IN
**FIRST ALLEY EAST
 OF LOMINA AVE.**
 BETWEEN HARVEY WAY AND TILBURY ST.
HARVEY WAY
 BETWEEN MADON AVE AND WOODRUFF AVE.
WOODRUFF AVE.
 BETWEEN CENTRALIA ST. AND HARVEY WAY
 IN TRACT N. 16222.

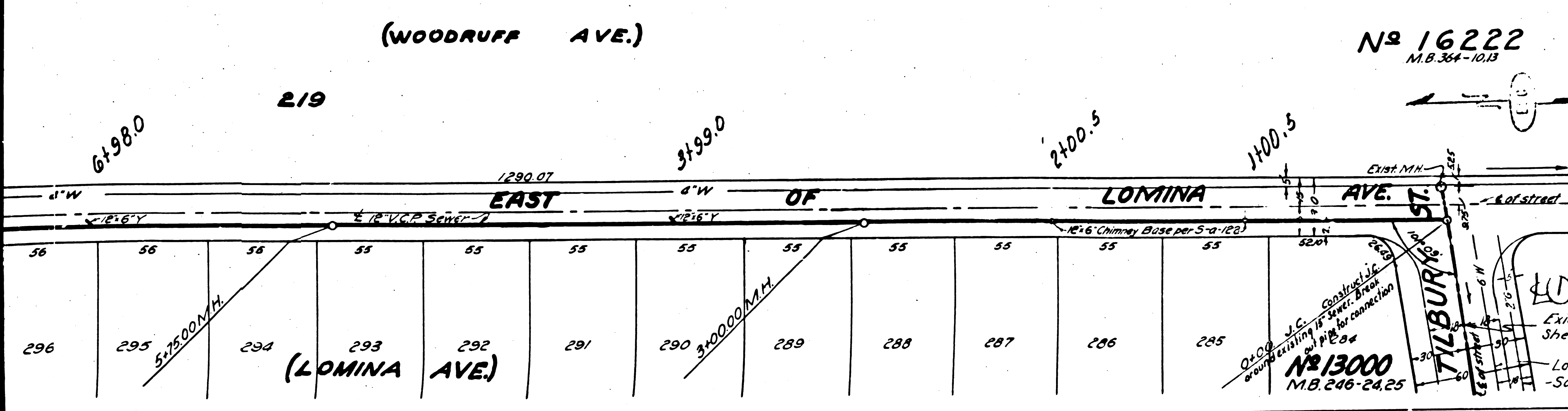
PRIVATE CONTRACT NO. 1251
 W.S. 31
 SHEET 3 OF 3 SHEETS

SCALE: VERT. 1" = 4'
 HOR. 1" = 40'

APRIL, 1950

PREPARED IN THE OFFICES OF
ENGINEERING SERVICE CORPORATION

BY E.F. Koenig
 REG. C. E. NO. 101



ENGINEERING SERVICE CORPORATION
 1127 W. WASHINGTON BLVD.
 LOS ANGELES 15, CALIF.

Revised Alignment on Alley 4-27-50
 Revised Grades on Alley, Woodruff & Harvey Way 4-27-50

DESIGNED BY C.M.R.
 CHECKED BY P.H.
 SUBMITTED BY M.L. [Signature]

DATE 4-6-50
 WEST. T.F.S. NO. 120125

FOR LEGEND
 SEE PLAN NO. 5-4-44

FOR CONSTRUCTION NOTES SEE SHEET 1.

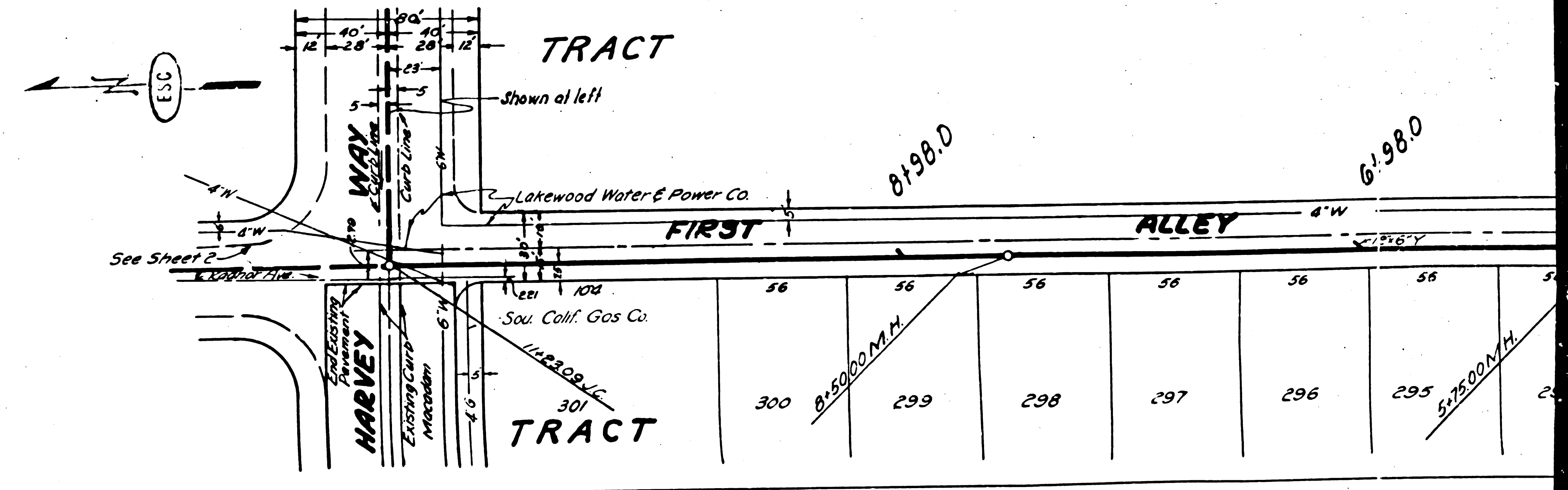
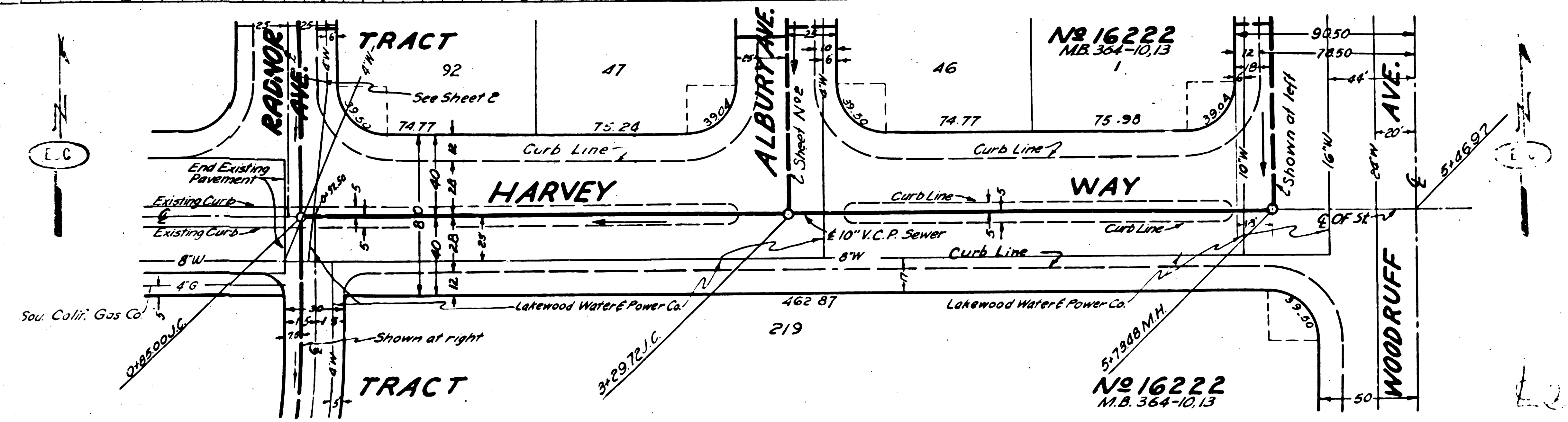
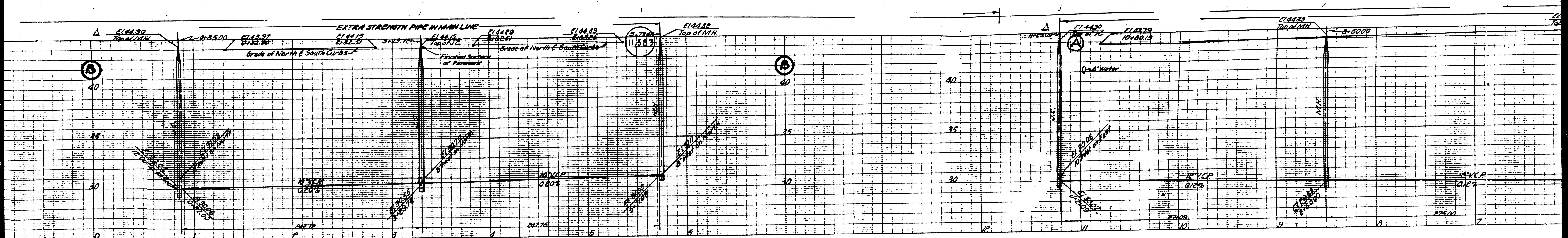
COUNTY OF LOS ANGELES, CALIFORNIA

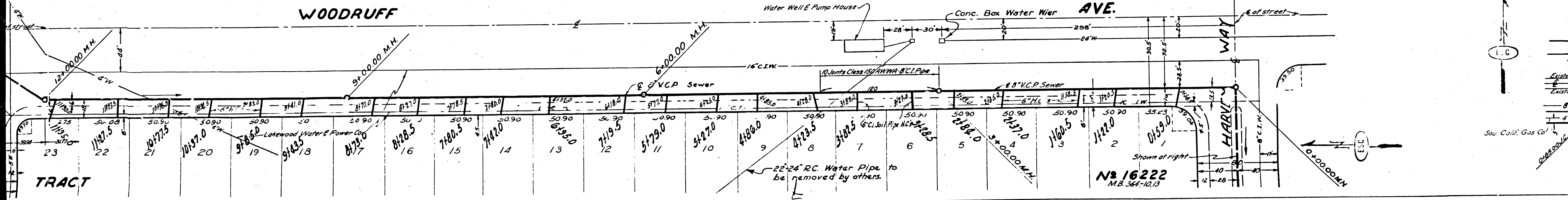
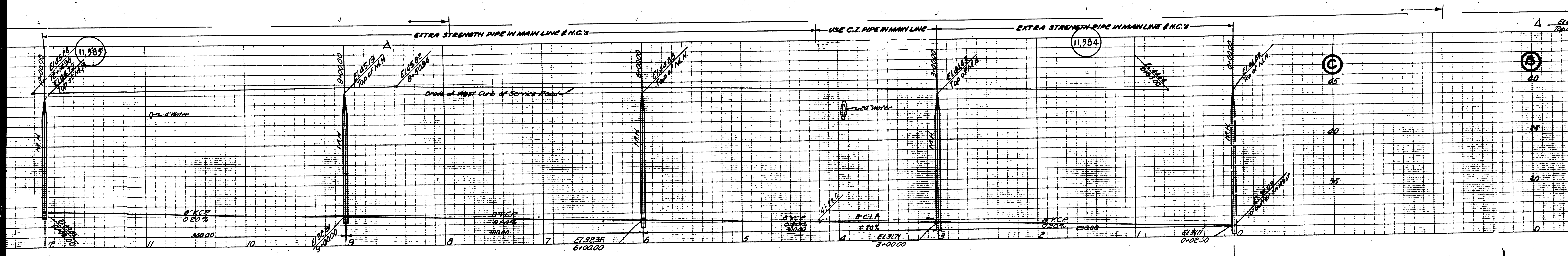
APPROVED: [Signature]
 COUNTY ENGINEER

APPROVED: [Signature]
 CHIEF ENGINEER OF COUNTY
 SANITATION DIST. NO. 2

CHECKED: [Signature]
 OFFICE OF COUNTY ENGINEER, REG. C. E. NO. 1582

SEE PLAN NO. 5-4-44
 FOR LEGEND
 FOR CONSTRUCTION NOTES SEE SHEET 1.
 COUNTY OF LOS ANGELES, CALIFORNIA
 APPROVED: [Signature]
 COUNTY ENGINEER
 APPROVED: [Signature]
 CHIEF ENGINEER OF COUNTY
 SANITATION DIST. NO. 2
 CHECKED: [Signature]
 OFFICE OF COUNTY ENGINEER, REG. C. E. NO. 1582





TRACT

23	22	21	20	19	18	17	16	15	14	13	12	11	10	9	8	7	6	5	4	3	2	1	0	
1147.5	1077.5	1015.0	958.5	914.5	871.0	828.5	786.0	743.5	701.0	658.5	616.0	573.5	531.0	488.5	446.0	403.5	361.0	318.5	276.0	233.5	191.0	148.5	106.0	63.5

Water Well & Pump House

Conc. Box Water Wrier

16" C.I.W.

10 Joints Class 150 AWWA 8" C.I. Pipe

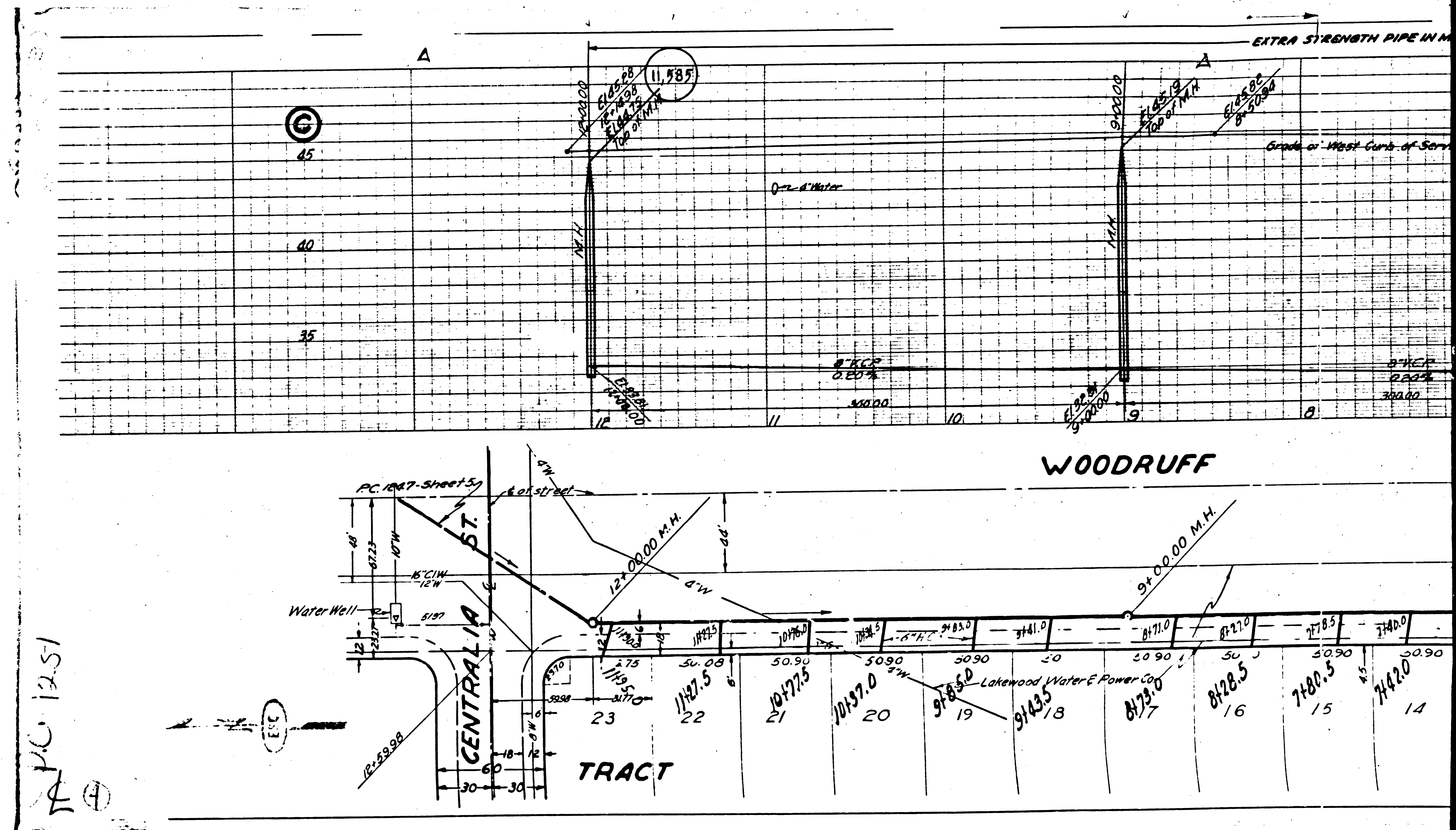
8" V.C.P. Sewer

8" V.C.P. Sewer

22'-24" RC Water Pipe to be removed by others.

Shown at right

N 16222
M.B. 364-10, 13



PC 1251
 20