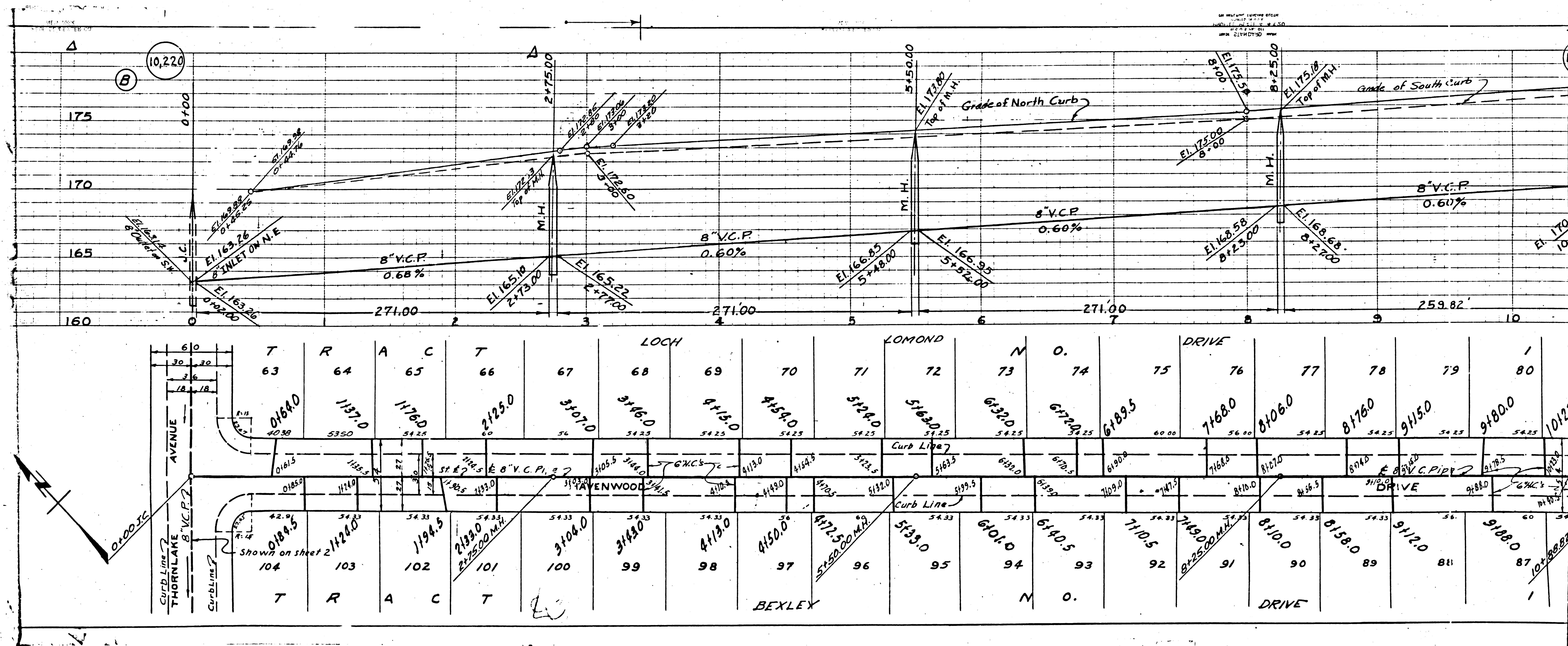
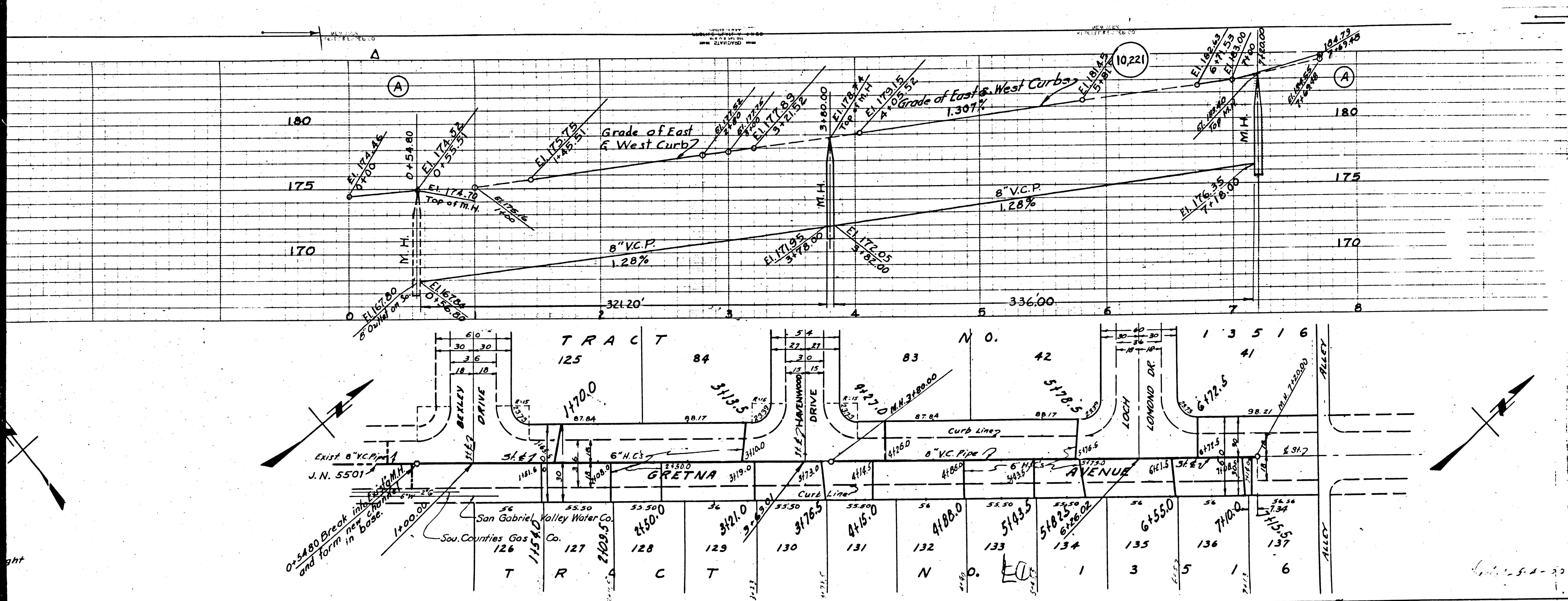


Existy 8" V.C.P. Sewer C.I. 113T
 San Gabriel Valley Water
 Existy 10" V.C.P. Sewer City of Whittier
 Sou. Cou. Gas Co.

A PORTION OF THE RANCHO PASO DE BARTOLO MR. 23, PAGES 55 & 56





TR 13516

(2)

PROFILE, ALIGNMENT, AND GRADE OF
SANITARY SEWERS
 TO BE CONSTRUCTED IN
GRETNA AVENUE
 BETWEEN BEXLEY DRIVE AND KEITH DRIVE
ALLEY
 BETWEEN BEXLEY DRIVE AND KEITH DRIVE
LOCH LOMOND DRIVE
 BETWEEN THORNLAKE AVENUE AND GRETNA AVENUE
THORNLAKE AVENUE
 BETWEEN BEXLEY DRIVE AND LOCH LOMOND DRIVE

PRIVATE CONTRACT NO. 1256
 W.S., 37

SHEET 2 OF 2 SHEETS

SCALE: Vert. 1"=4'
 Horiz. 1"=40' March 1957

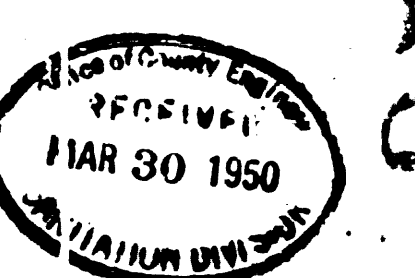
PREPARED IN THE OFFICES OF
KEMMERER ENGR. CO.

John H. Kemmerer
 P.E. 274

FOR LEGEND
 See Plan No. S-a-6A.
 For Construction Notes See Sheet 1

APPROVED: *James T. Keeton*
 COUNTY ENGINEER

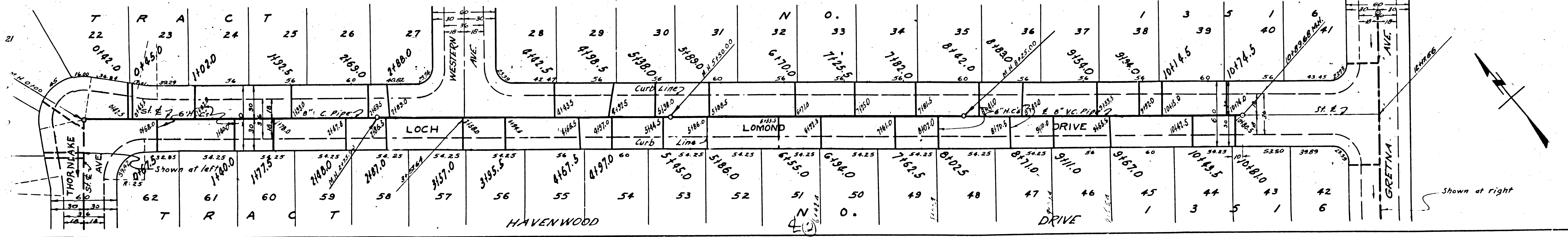
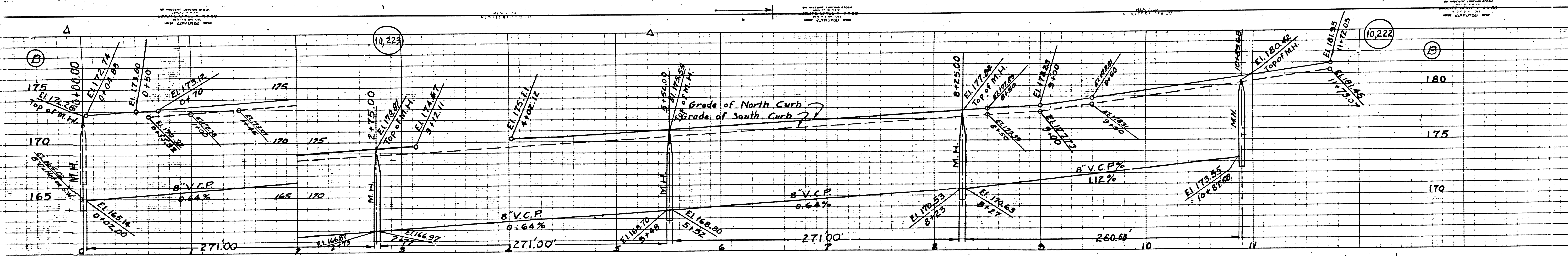
APPROVED: *John H. Kemmerer*
 CHIEF ENGINEER OF COUNTY
 SANITATION DISTRICT NO. 10

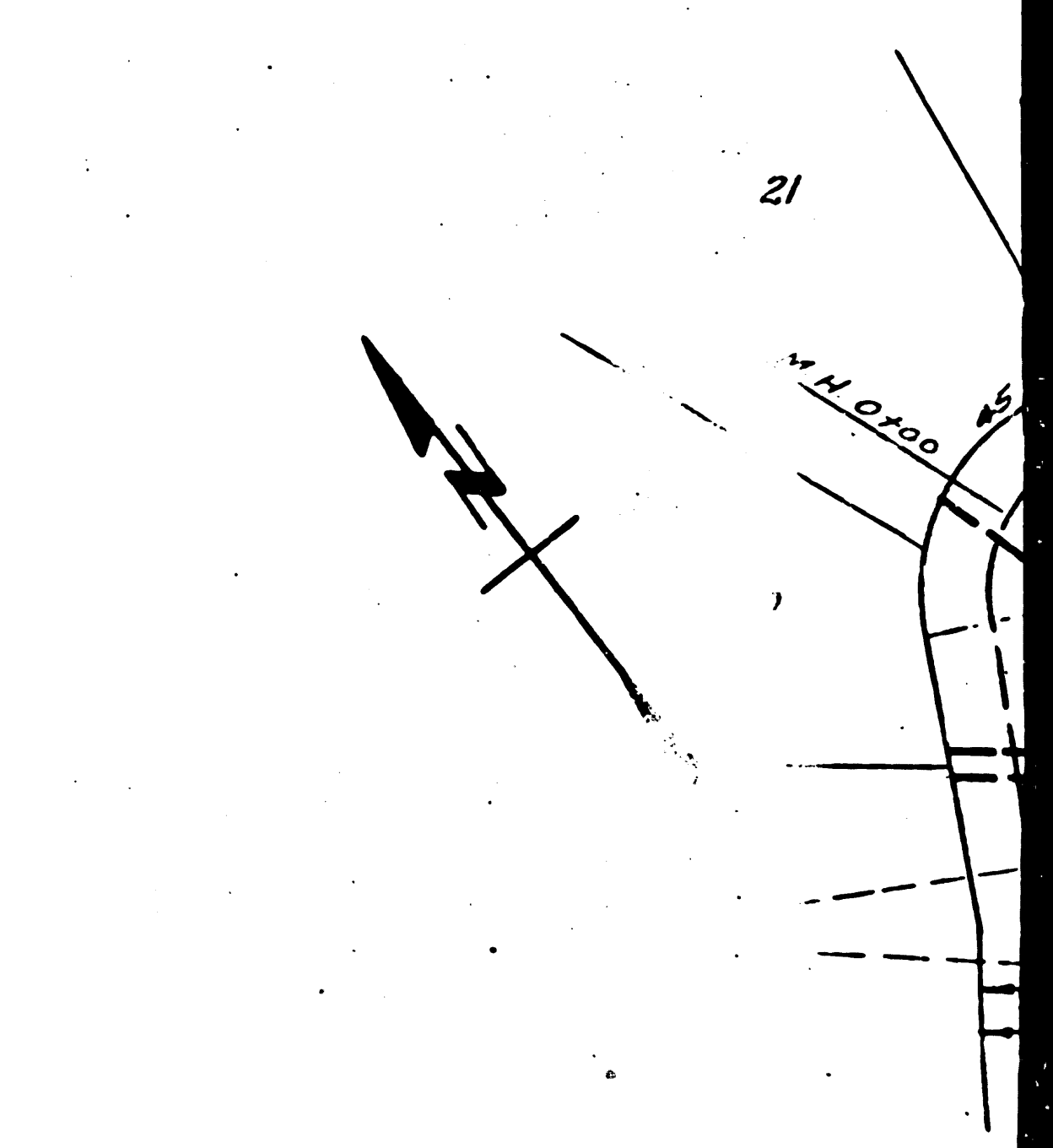
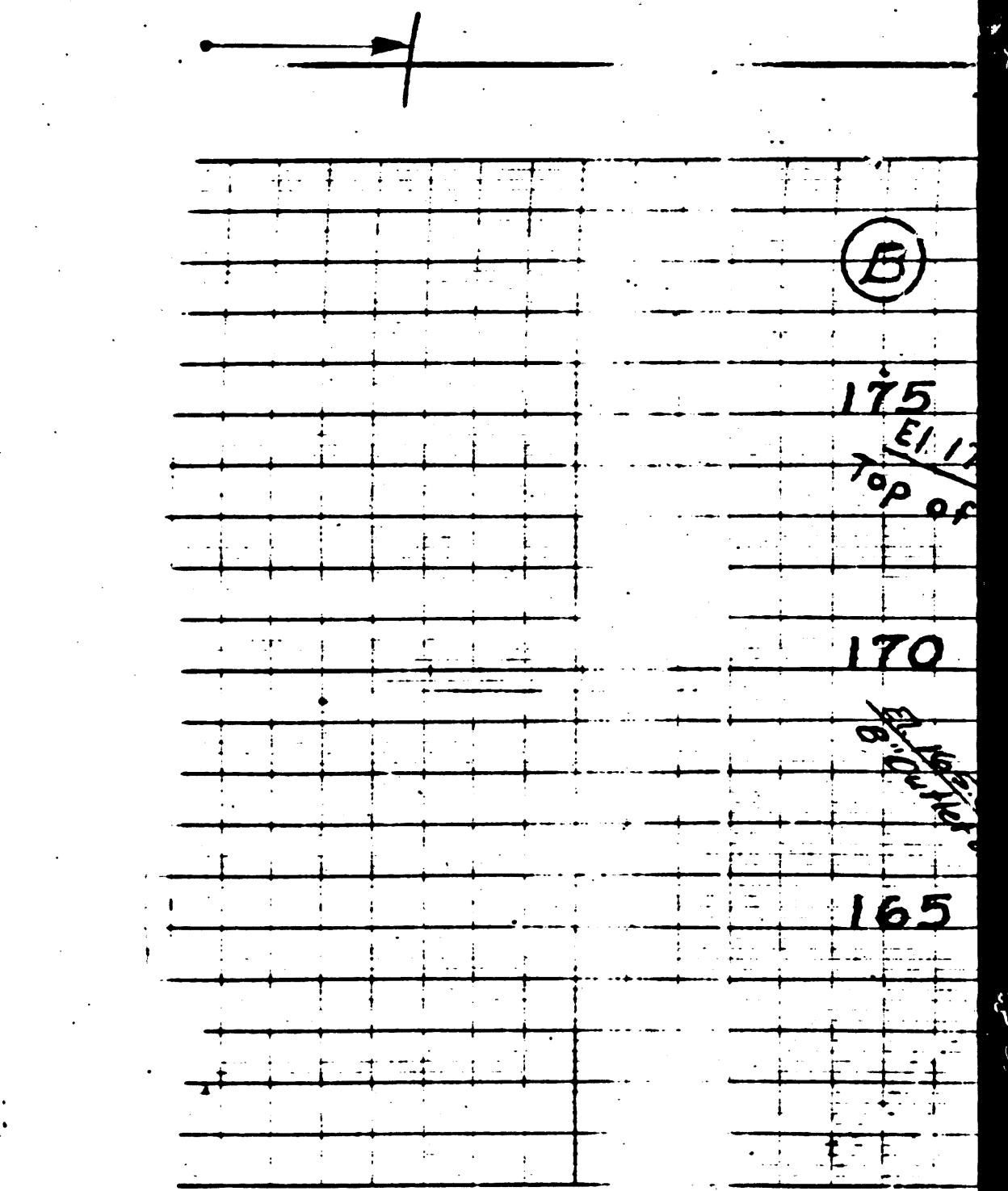
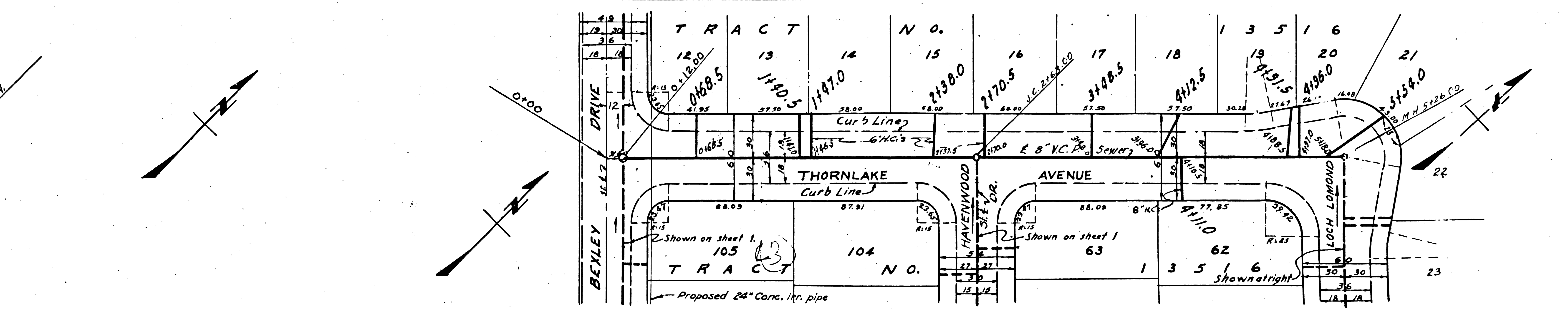
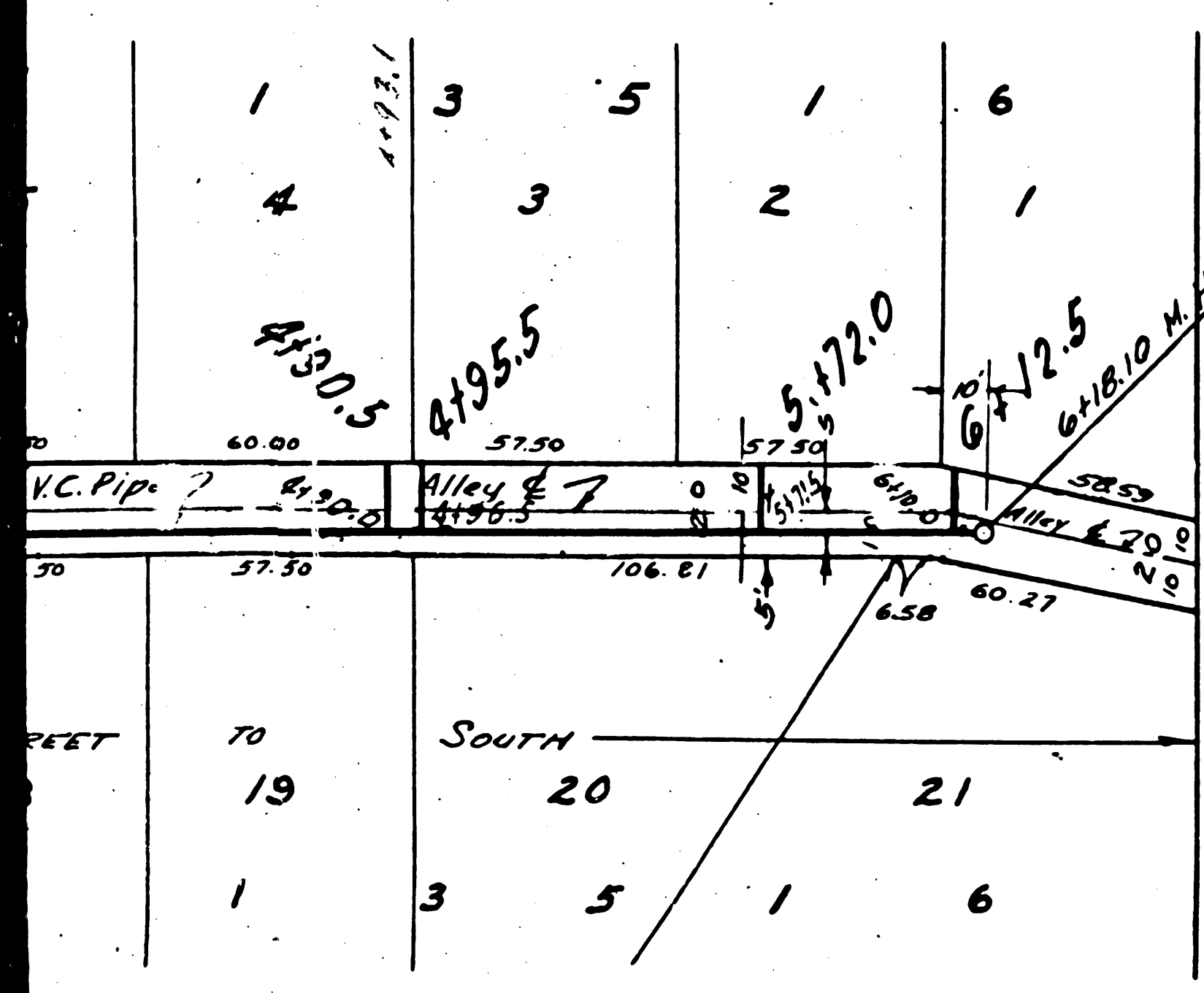
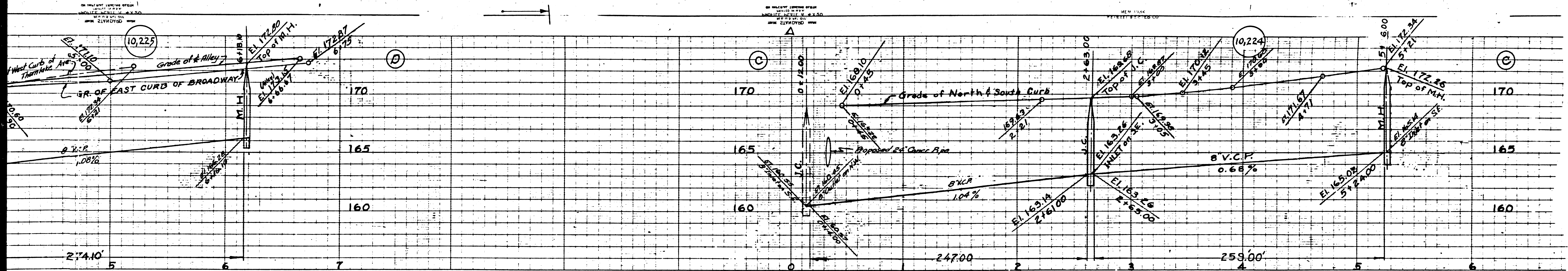


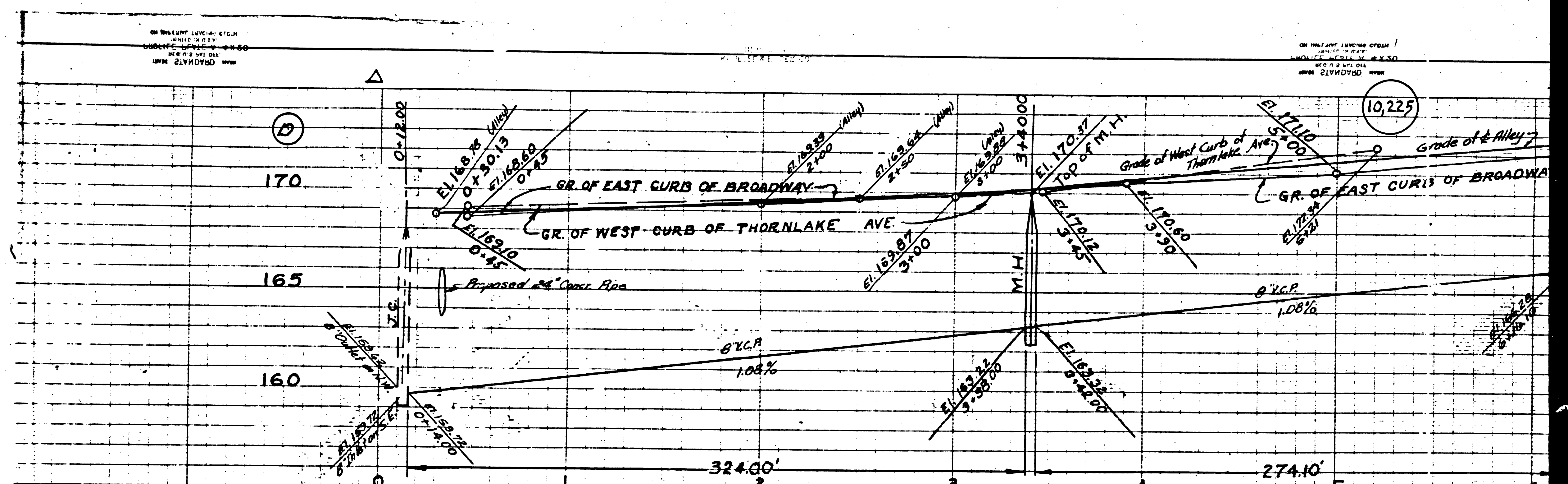
CHECKED BY: *James T. Keeton* 3/15/57
 OFFICE OF COUNTY ENGINEER, 216 CALIF. ST., SACRAMENTO, CALIF.

Trim Line

D.C. 13516







PC 1250

4.9	19	30	3.6	11	10	9	8	7	6	5	4	3	5	1
TRACT (BROADWAY) N O.														
5704	5704	5704	5704	5704	5704	5704	5704	5704	5704	5704	5704	5704	5704	5704
5704	5704	5704	5704	5704	5704	5704	5704	5704	5704	5704	5704	5704	5704	5704
SERVED BY SEWER IN STREET TO SOUTH														
12	13	14	15	16	17	18	19	20						
Proposed 24" Conc. Ir. pipe.														
TRACT (THORNLAKE N O. AVE.)														
1	3	5	1											