

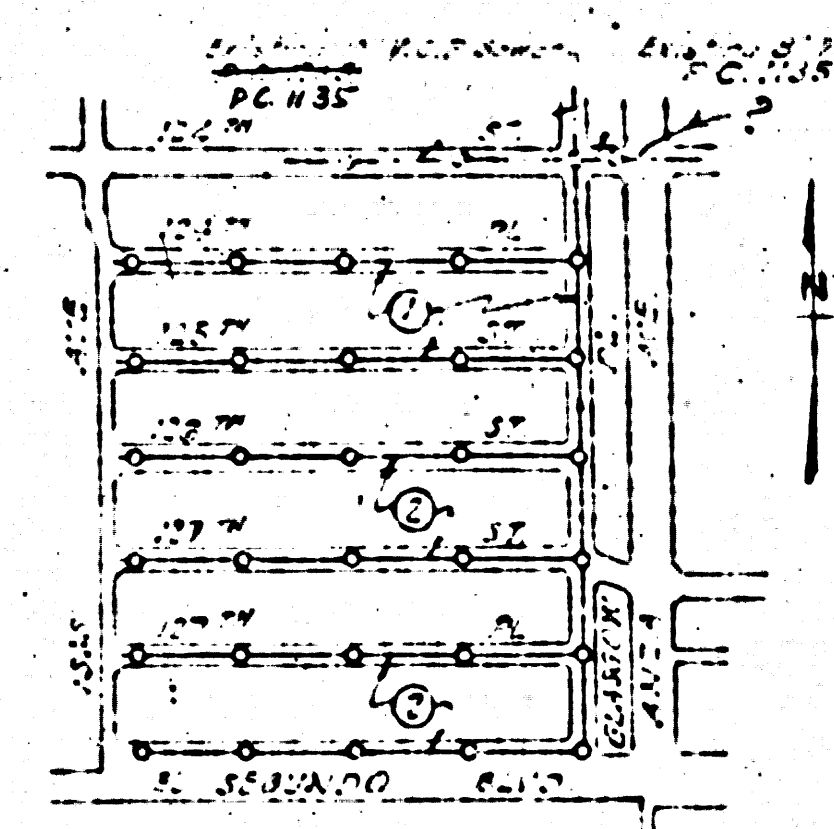
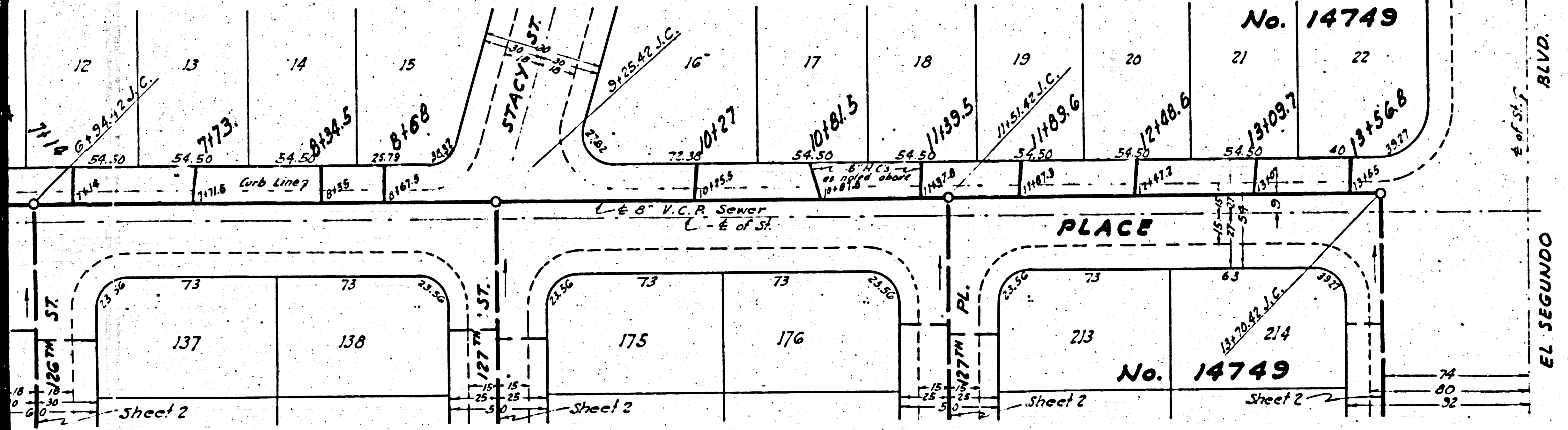
- 1. USE STANDARD DRAINAGE FRAMES AND COVERS EXCEPT:
- 2. USE STANDARD 24\"/>

PROFESSIONAL ENGINEER AND ARCHITECT  
**SANITARY SEWERS**  
 TO BE CONSTRUCTED IN  
**GLASGOW PLACE**  
 BETWEEN EL SEGUNDO BL. & 124<sup>TH</sup> ST.  
**125<sup>TH</sup> STREET**  
 BETWEEN 124<sup>TH</sup> ST. & GLASGOW PL.

S.M.E.W. 4 52.50 HOUSE OF 125<sup>TH</sup> ST.  
 N.E. CORNER 124<sup>TH</sup> AVE. & 125<sup>TH</sup> ST.  
 S.W. 7<sup>TH</sup> IN CORNER WALL

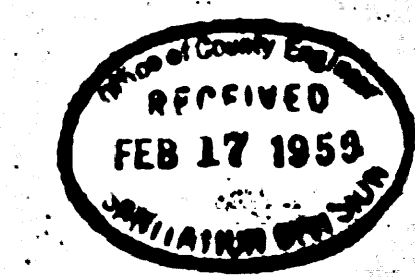
PRIVATE CONTRACT No. 1257  
 W. S. 25  
**SHEET 1 OF 2 SHEETS**

PREPARED BY THE ARCHITECT & ENGINEER  
**SEABOARD ENGINEERING CO.**  
 BY *W. S. 25*



INDEX MAP  
 125<sup>TH</sup> ST  
 EL SEGUNDO BLVD  
 124<sup>TH</sup> ST

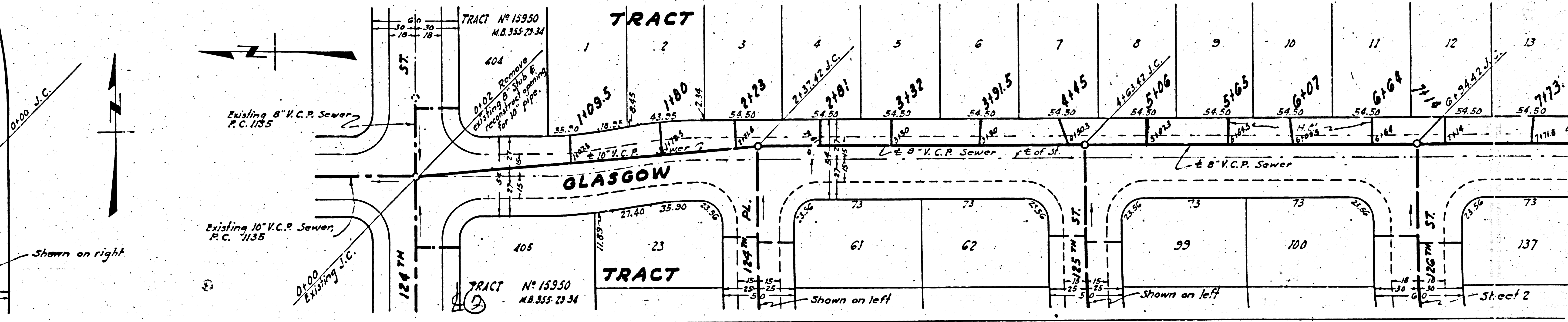
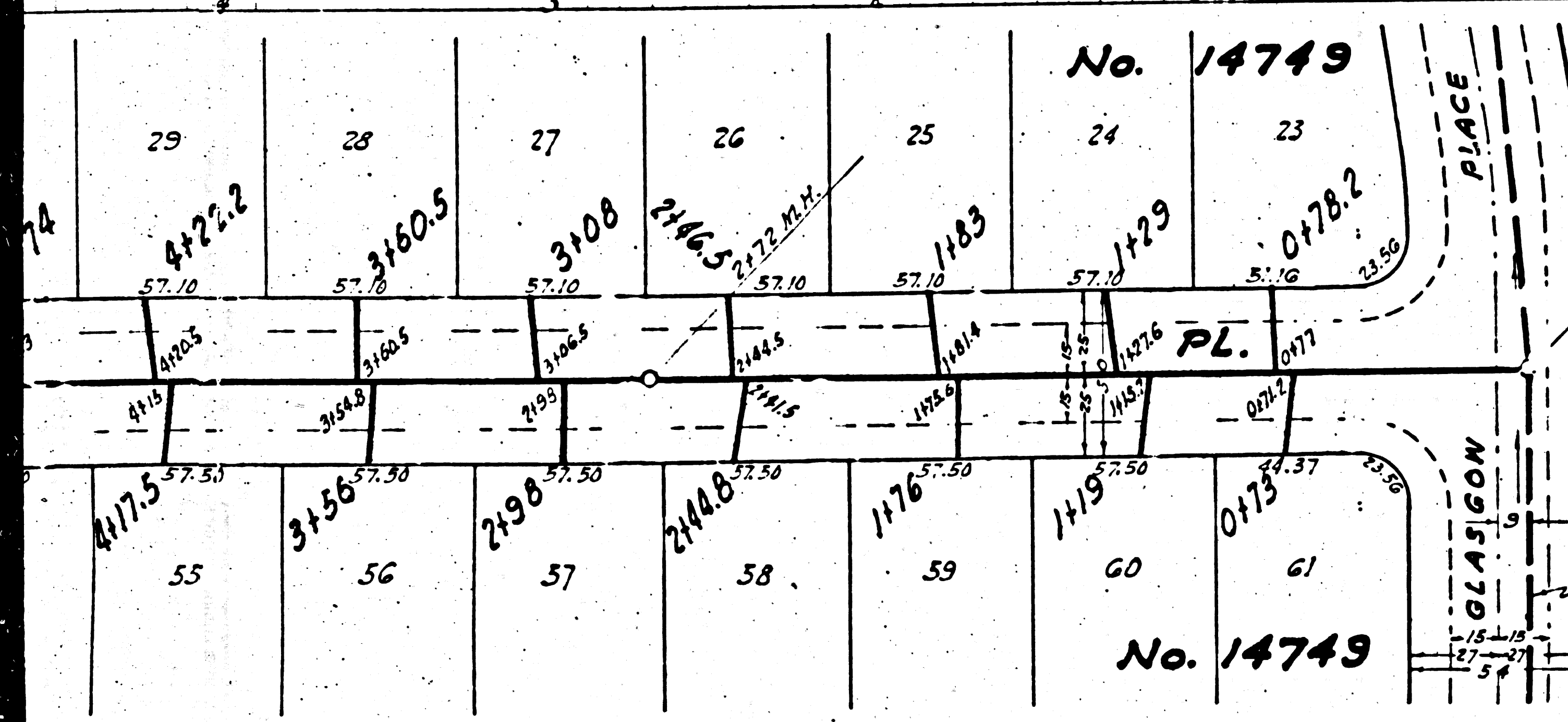
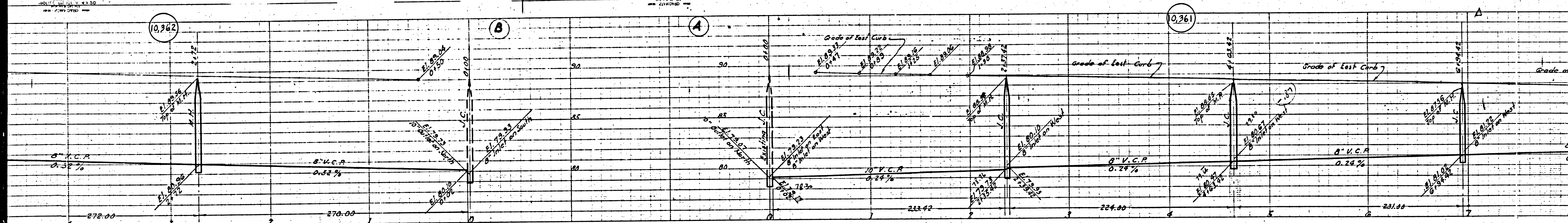
*Check - No. 518-50*



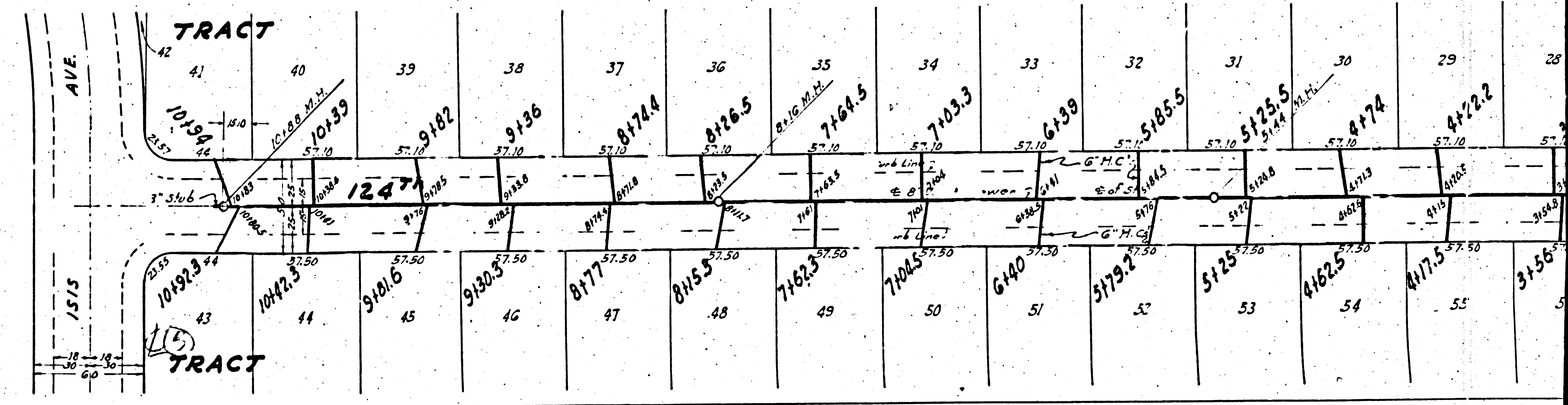
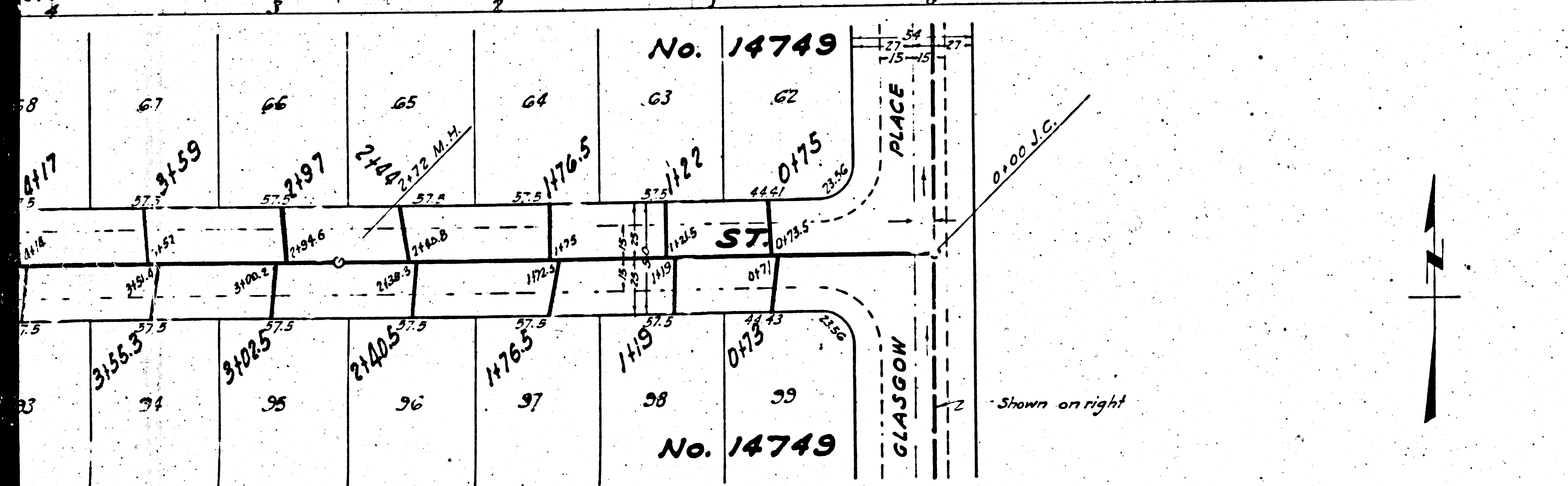
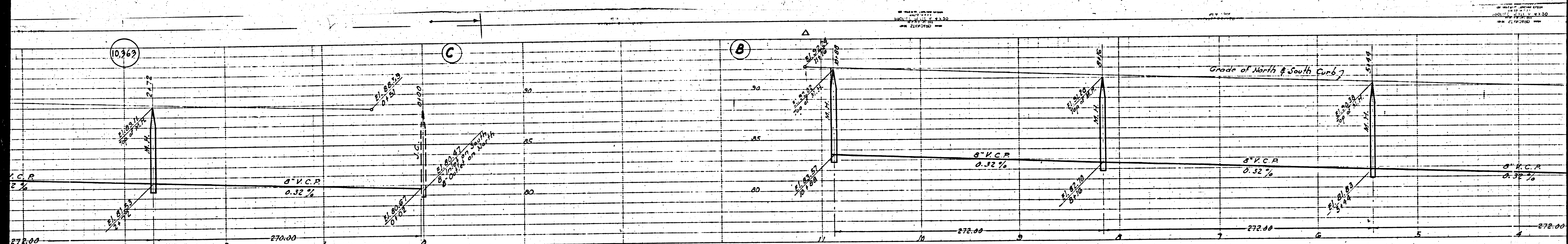
COUNTY OF LOS ANGELES, CALIFORNIA  
 APPROVED: *W. S. 25*  
 ARCHITECT  
 APPROVED: *W. S. 25*  
 ENGINEER

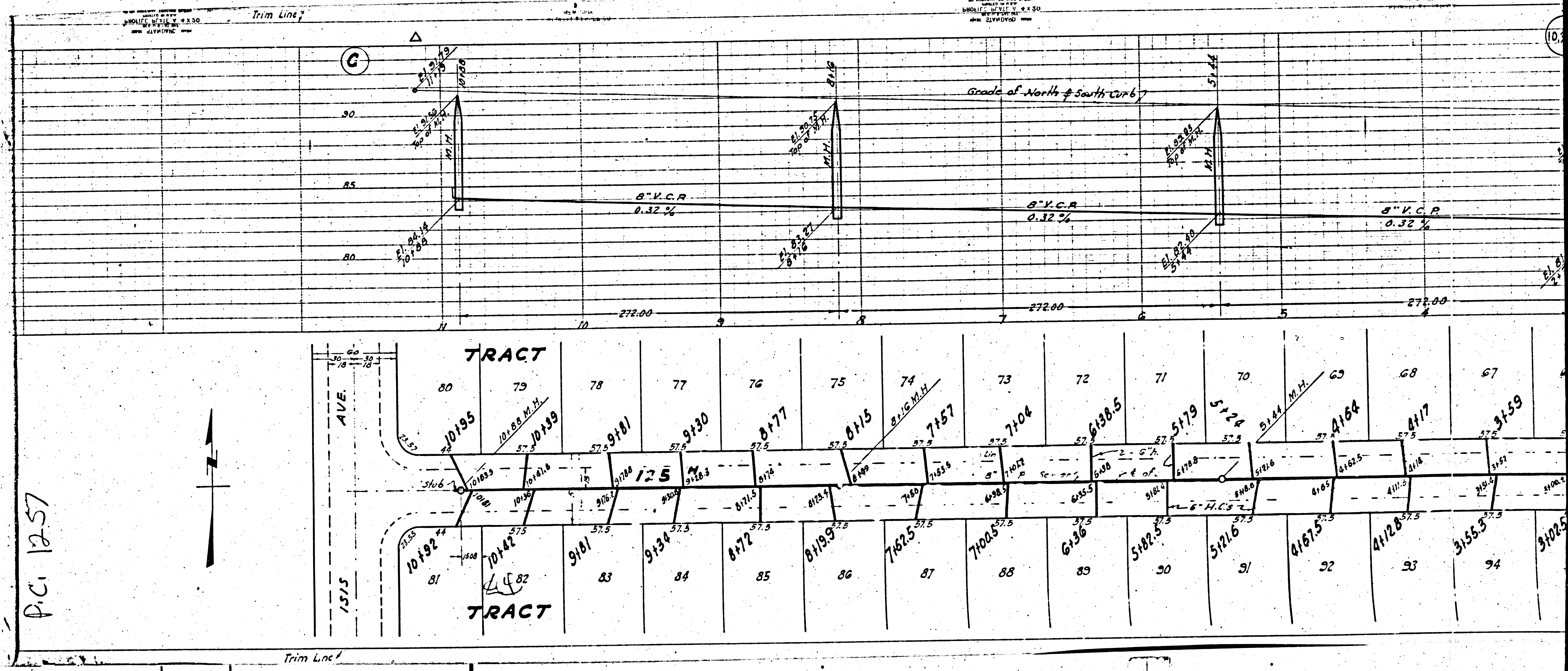
20

AS BUILT RECORD OF THE  
STREET  
PROJECT  
NO. 21414000

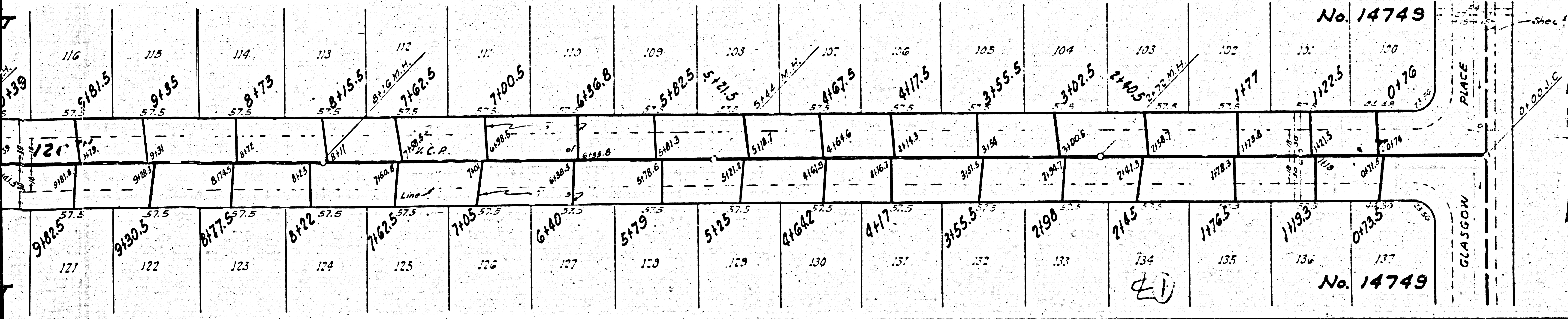
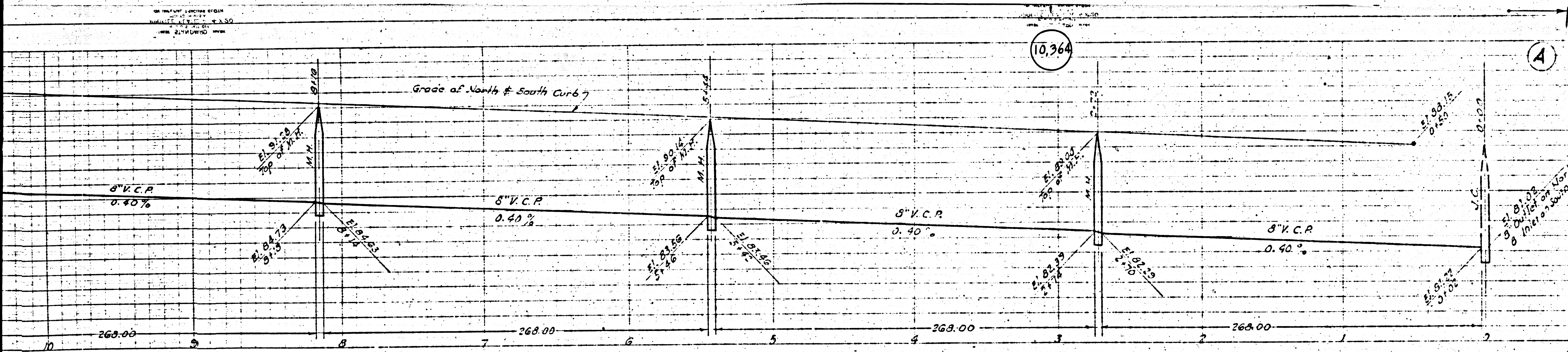


Sheet 2





P.C. 12.57



**126<sup>TH</sup> STREET**  
**127<sup>TH</sup> STREET**  
**127<sup>TH</sup> PLACE**  
**EL SEGUNDO BLVD.**  
 BETWEEN GLASGOW BL. & 153<sup>RD</sup> AVE.

PRIVATE CONTRACT No. 1257  
 W. E. 25  
**SHEET 2 OF 2 SHEETS**  
 SCALE: HORIZ. 1" = 40'  
 VERT. 1" = 4'  
 PREPARED IN THE OFFICES OF  
**SEABOARD ENGINEERING CO.**

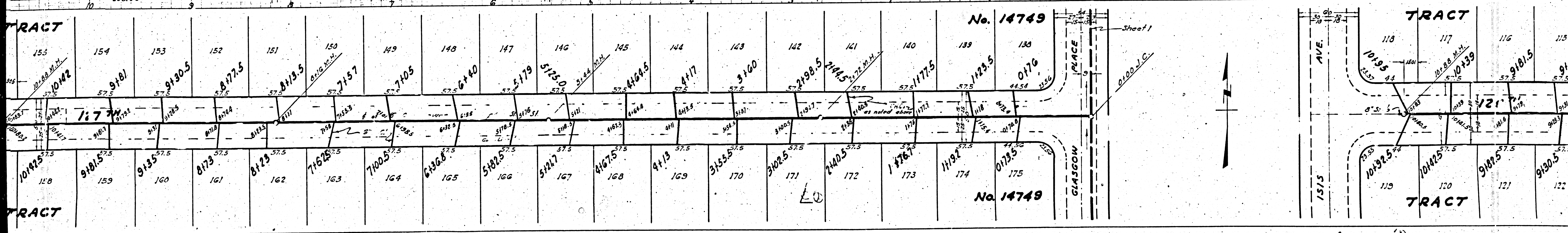
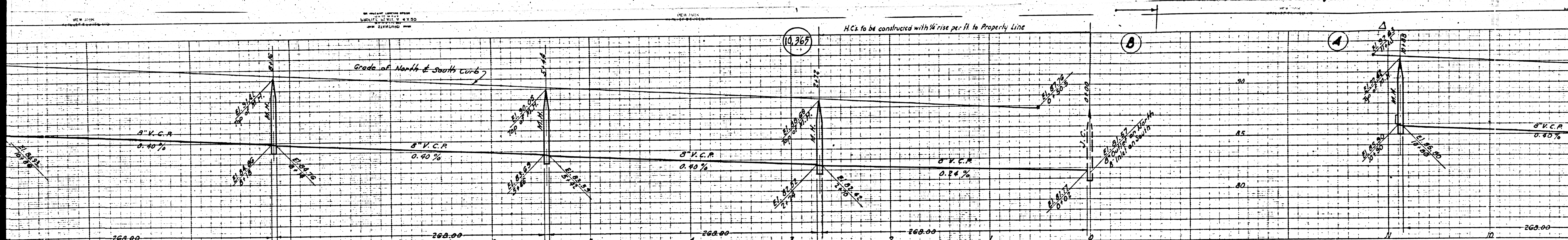
*Mark A. Robm*  
 No. 2859

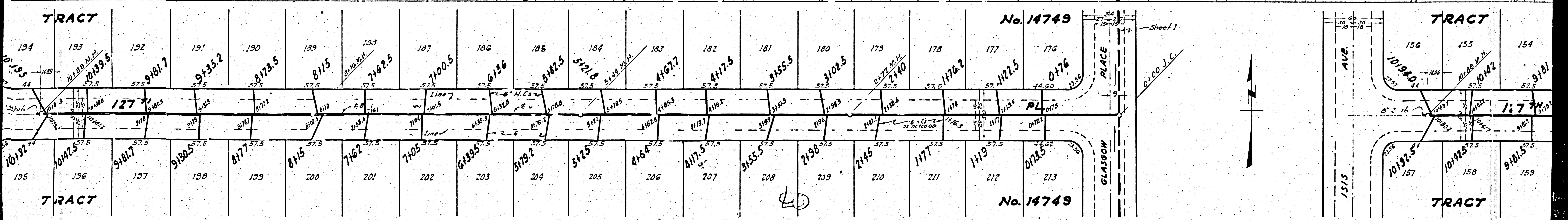
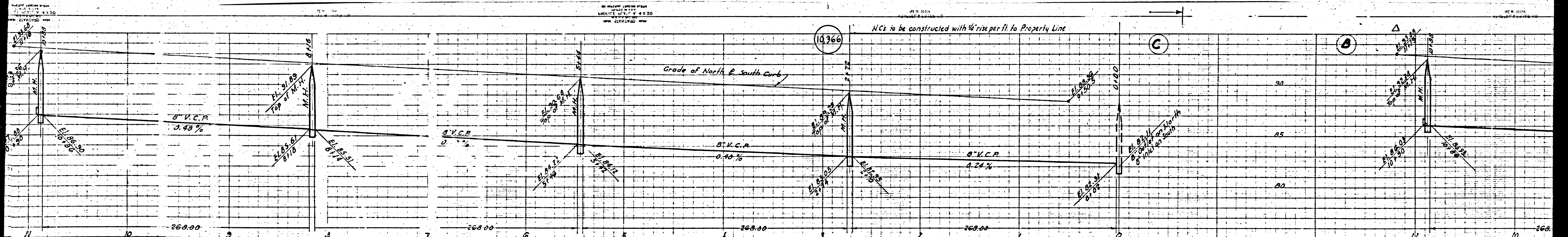
FOR CONNECTION NOTES  
 SEE SHEET 1

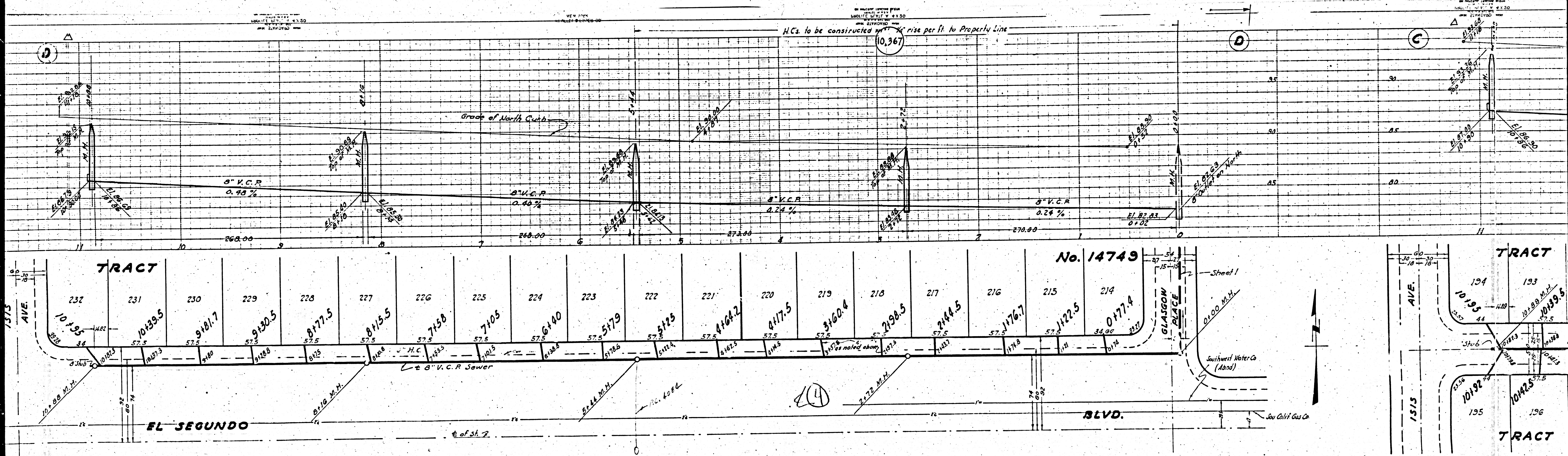
COUNTY OF LOS ANGELES, CALIFORNIA  
 RECEIVED  
 FEB 17 1959  
 COUNTY CLERK'S OFFICE

*Charles W. Lavin 5-18-59*  
 J. M. Moore  
 2-14-50  
 6322

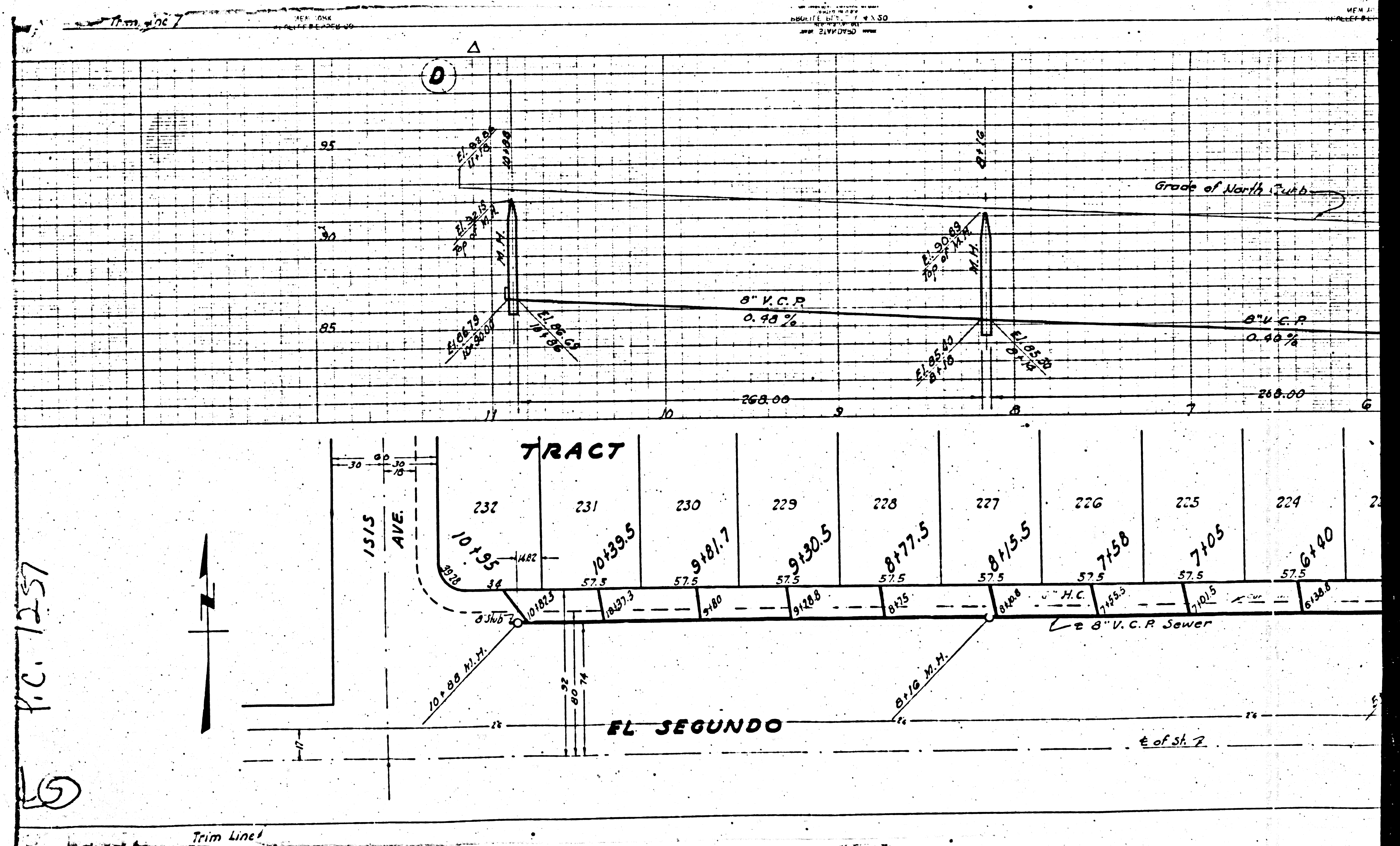
Trim Line











P.C. 1257

⑤