

**PROFILE, ALIGNMENT AND GRADE OF  
SANITARY SEWERS  
TO BE CONSTRUCTED IN  
LERMA ROAD  
BETWEEN CENTRAL AVE. & PAWCETT AVE.  
CENTRAL AVE.  
BETWEEN LERMA ROAD & N.Y. LINE TR. 15806  
PRIVATE CONTRACT NO. 1259  
WS 37 JANUARY 1950**

SCALE: VERT. 1" = 4'  
HORIZ. 1" = 40'

**SHEET 1 OF 3 SHEETS**

PREPARED IN THE OFFICES OF  
**ADAMS AND ELLS - ENGINEERS**

BY: *Harold H. Tompsett*  
Reg. C.E. No. 1832

FOR LEGEND  
See Plan No. 3-a-64

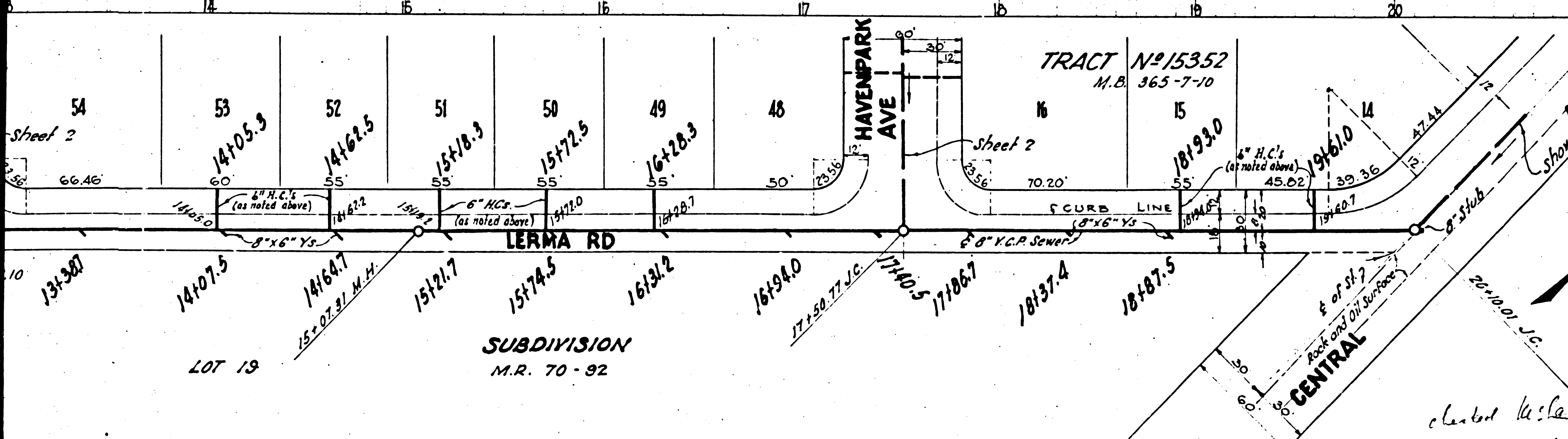
**NOTE:**  
Grades to which this improvement is to be constructed are shown on Plans and Profile. Grade points for top of curb, center line of street or center line of alley are shown by circles on profile. At all points between designated points the grades shall be established so as to conform to a straight line drawn between said designated points.  
Elevations are in feet above U.S.S. Datum or Mean Sea Level.  
This drawing and the data hereon are hereby made a part of the Specifications.  
Work shall be constructed according to specifications on file in the office of the County Engineer, and shall be prosecuted only in the presence of the County Engineer.  
Before work can be started, the contractor must obtain a permit to excavate in County streets from the L.A. County Road Dept., 211 So. Main Street, and make a deposit with the County Engineer, 828 L.A. County Engineering Bldg., sufficient to cover the cost of construction inspection and record plans.  
Approval of this plan by the County of Los Angeles does not constitute a representation as to the accuracy of the location of, or the existence or non-existence of any underground utility, pipe or structure within the limits of this project. This applies to all sheets.

**COUNTY OF LOS ANGELES, CALIFORNIA**  
APPROVED: *[Signature]* COUNTY ENGINEER  
APPROVED: *[Signature]* CHIEF ENGINEER OF COUNTY SANITATION DISTRICT NO. 16

Revised grade line of Sewers 3-7-50  
REVISION CHECKED BY: *[Signature]* 2/1/50  
Office of the County Engineer Reg. C.E. 7103

INDEX MAP  
P.C. No. 1753-J.M. 3345  
Scale = 1" = 300'  
TRACT NO. 15352

Before breaking into any existing structure and before final acceptance of this work, County Sanitation District should be notified in order that required inspection may be made.



**TEST BORING**  
135' W. of Central Ave  
on Lerma Rd.

**NOTE:**  
The borings shown taken at 4 different locations and are shown as close as possible to the location. 2 Test Borings are on this sheet, see sheet 2 and 1 on sheet 3.

**NOTE:**  
Provide Stakes On The Property Lines Or Property Lines Produced, At Right Angles To The Sewer Line At The Center Line Of Each Manhole.

Before breaking into any existing structure and before final acceptance of this work, County Sanitation District should be notified in order that required inspection may be made.

INDEX MAP  
P.C. No. 1753-J.M. 3345  
Scale = 1" = 300'  
TRACT NO. 15352

checked by *[Signature]* 6-9-50

**PROFILE, ALIGNMENT AND GRADE OF  
SANITARY SEWERS  
TO BE CONSTRUCTED IN  
LERMA ROAD  
BETWEEN CENTRAL AVE. & PAWCETT AVE.  
CENTRAL AVE.  
BETWEEN LERMA ROAD & N.Y. LINE TR. 15806  
PRIVATE CONTRACT NO. 1259  
WS 37 JANUARY 1950**

SCALE: VERT. 1" = 4'  
HORIZ. 1" = 40'

**SHEET 1 OF 3 SHEETS**

PREPARED IN THE OFFICES OF  
**ADAMS AND ELLS - ENGINEERS**

BY: *Harold H. Tompsett*  
Reg. C.E. No. 1832

FOR LEGEND  
See Plan No. 3-a-64

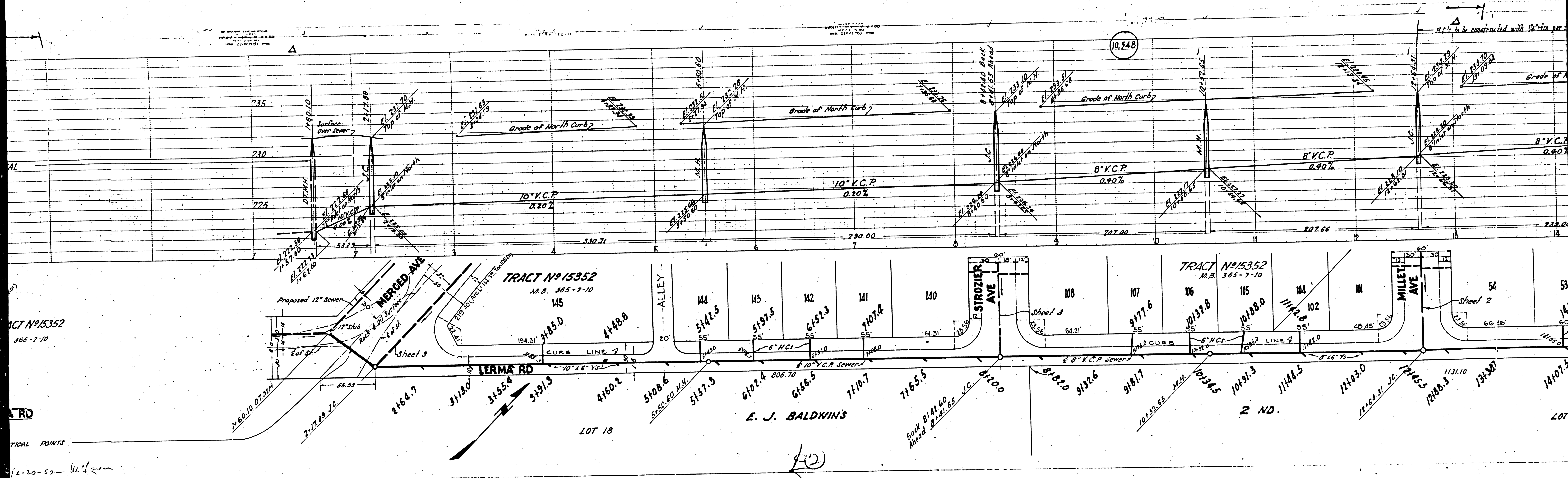
**NOTE:**  
Grades to which this improvement is to be constructed are shown on Plans and Profile. Grade points for top of curb, center line of street or center line of alley are shown by circles on profile. At all points between designated points the grades shall be established so as to conform to a straight line drawn between said designated points.  
Elevations are in feet above U.S.S. Datum or Mean Sea Level.  
This drawing and the data hereon are hereby made a part of the Specifications.  
Work shall be constructed according to specifications on file in the office of the County Engineer, and shall be prosecuted only in the presence of the County Engineer.  
Before work can be started, the contractor must obtain a permit to excavate in County streets from the L.A. County Road Dept., 211 So. Main Street, and make a deposit with the County Engineer, 828 L.A. County Engineering Bldg., sufficient to cover the cost of construction inspection and record plans.  
Approval of this plan by the County of Los Angeles does not constitute a representation as to the accuracy of the location of, or the existence or non-existence of any underground utility, pipe or structure within the limits of this project. This applies to all sheets.

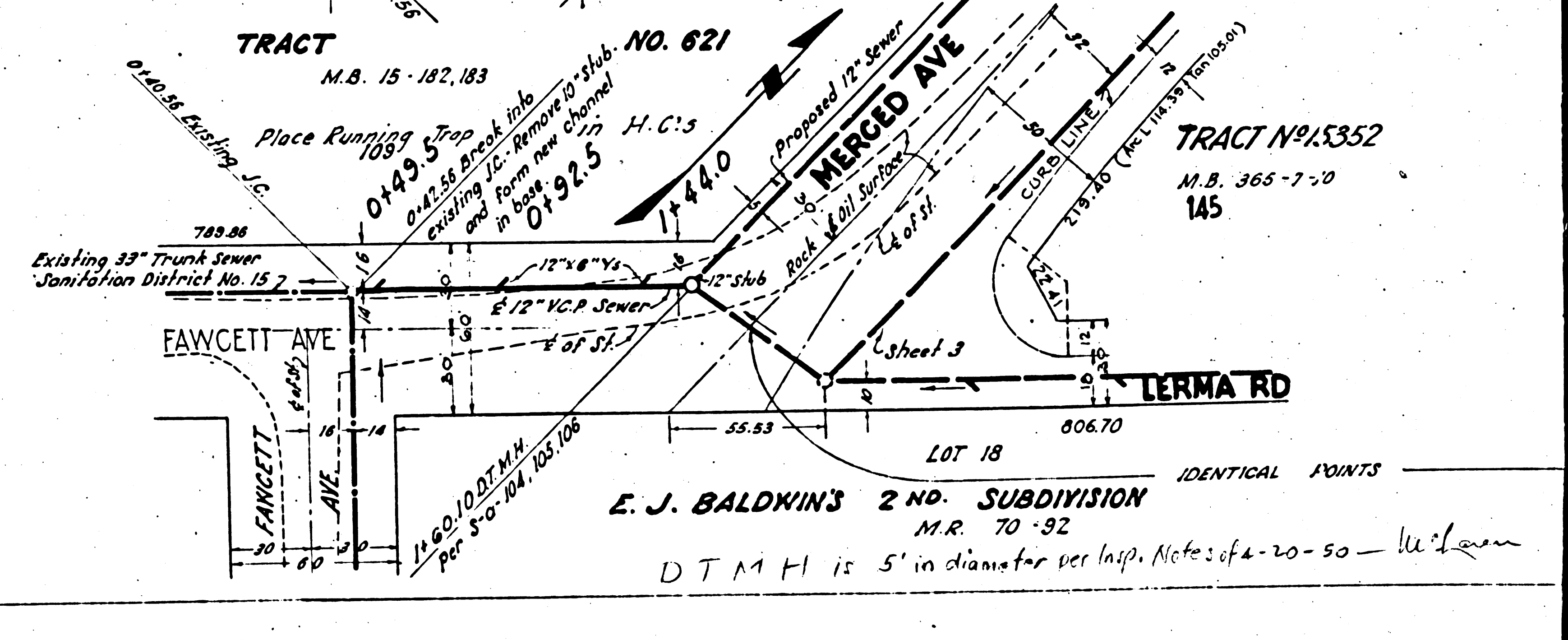
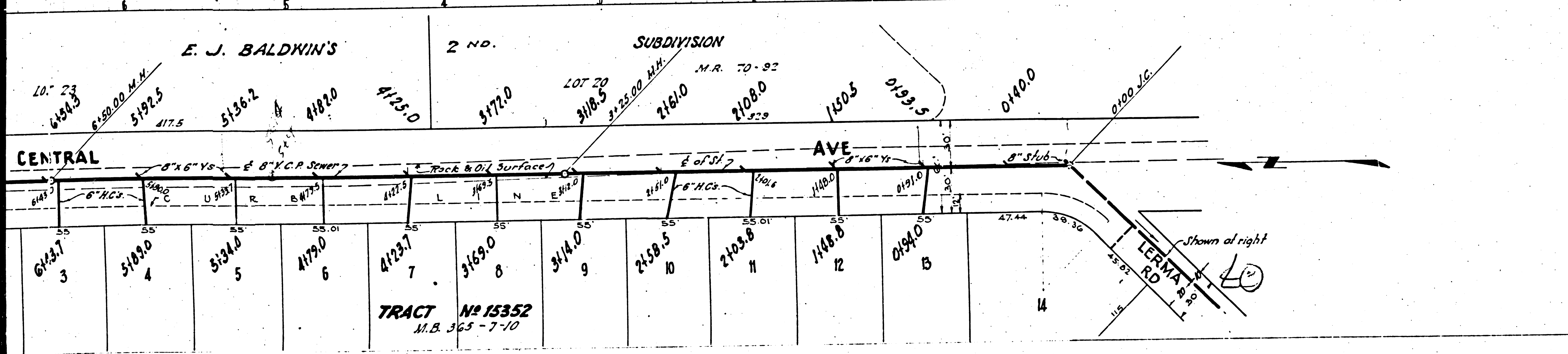
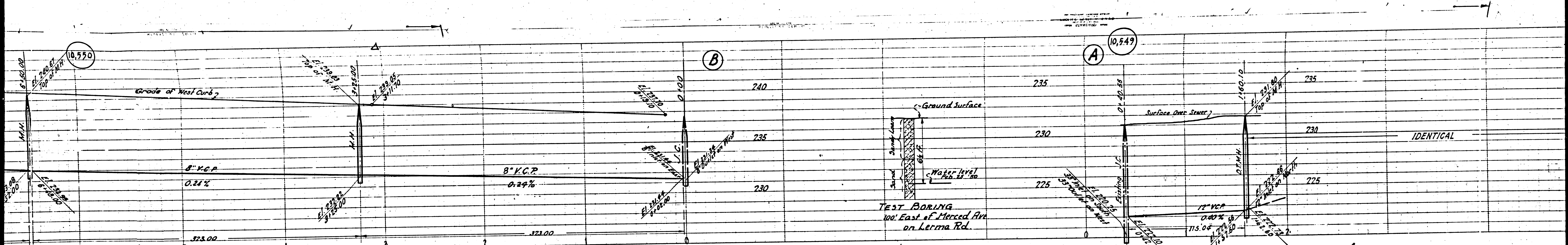
**COUNTY OF LOS ANGELES, CALIFORNIA**  
APPROVED: *[Signature]* COUNTY ENGINEER  
APPROVED: *[Signature]* CHIEF ENGINEER OF COUNTY SANITATION DISTRICT NO. 16

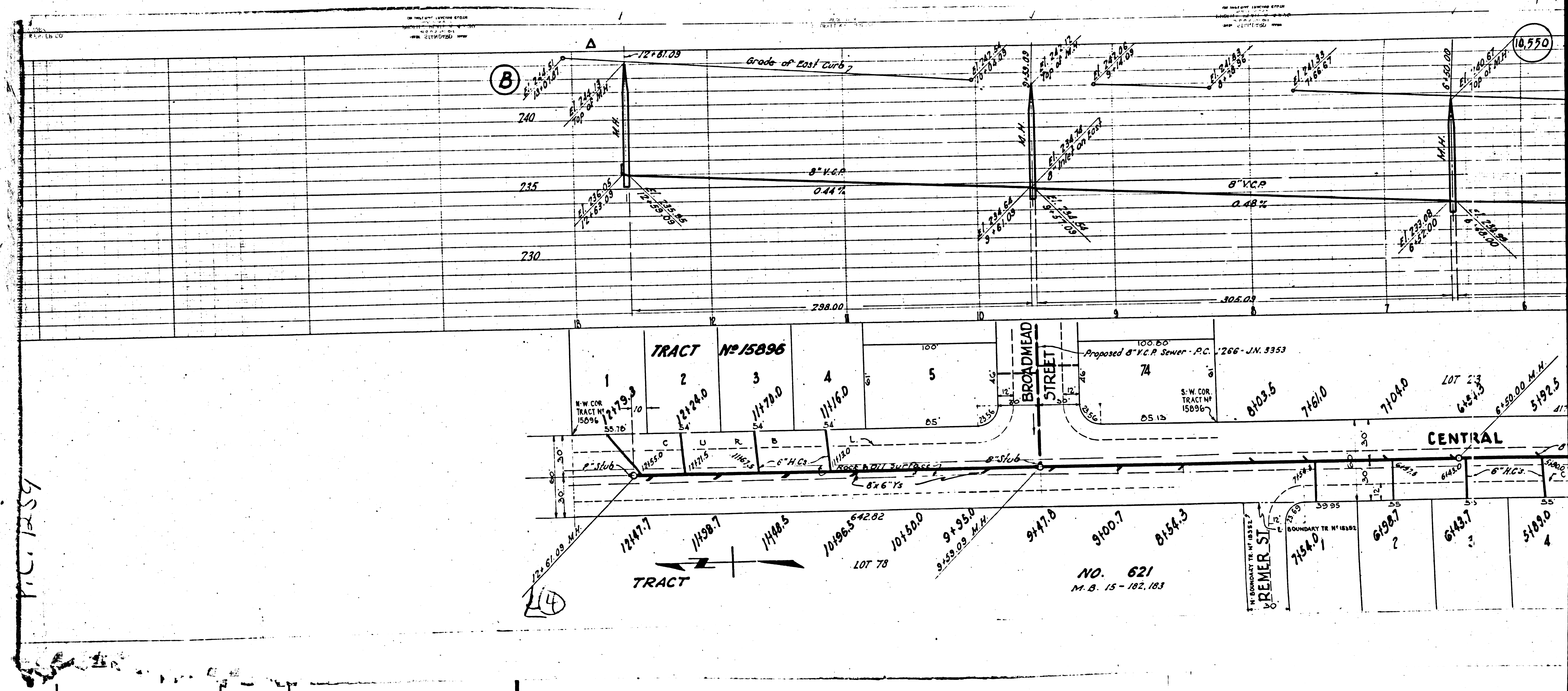
Revised grade line of Sewers 3-7-50  
REVISION CHECKED BY: *[Signature]* 2/1/50  
Office of the County Engineer Reg. C.E. 7103

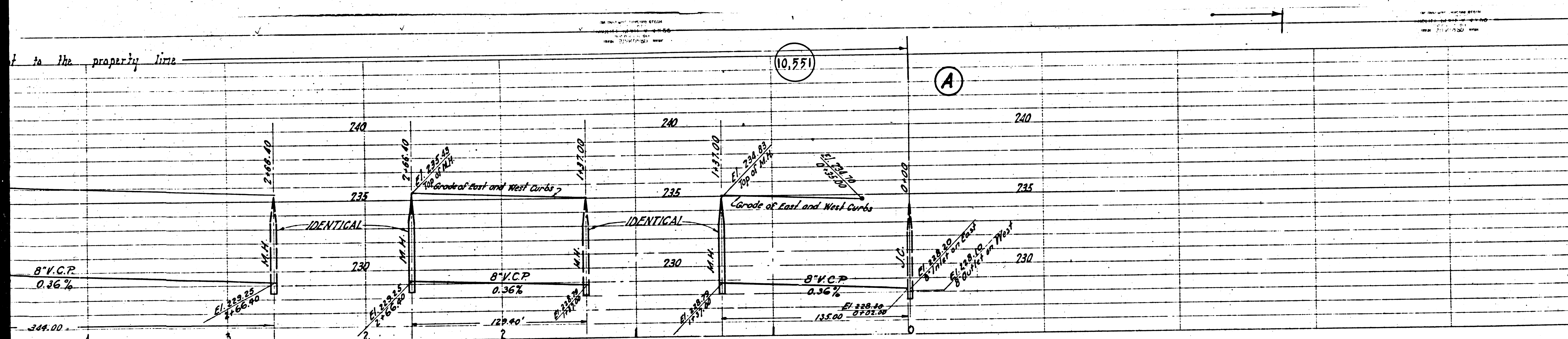
INDEX MAP  
P.C. No. 1753-J.M. 3345  
Scale = 1" = 300'  
TRACT NO. 15352

checked by *[Signature]* 6-9-50









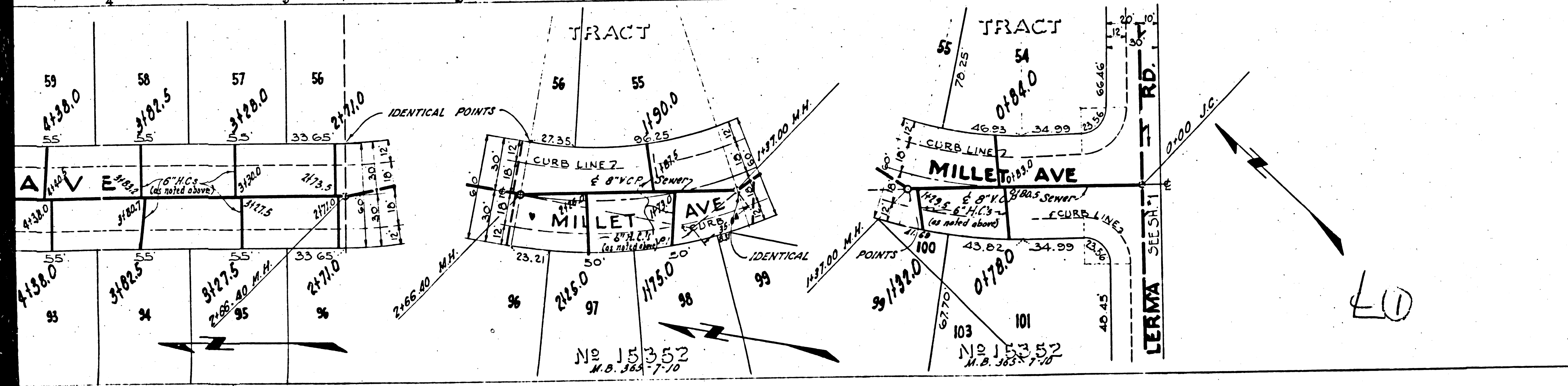
②

**PROFILE, ALIGNMENT AND GRADE OF  
SANITARY SEWERS  
TO BE CONSTRUCTED IN  
MILLET AVE.  
BETWEEN LERMA ROAD & REMER ST.  
HAVENPARK AVE.  
BETWEEN LERMA ROAD & REMER ST.  
PRIVATE CONTRACT NO. 1259  
W.S. 37**

SCALE: VERT. 1"=4'  
HORIZ. 1"=40'

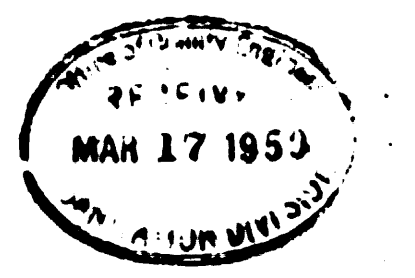
**SHEET 2 OF 3 SHEETS**      JANUARY 1950

PREPARED IN THE OFFICES OF  
**ADAMS AND ELLS ENGINEERS**  
BY *Harold H. Tompkins*  
REG. C. E. NO. 1852



Before breaking into any existing structure and before final acceptance of this work, County Sanitation District should be notified in order that required inspection may be made.

FOR LEGEND  
See Plan No. 3-a-64  
FOR CONSTRUCTION NOTES  
See Sheet No. 1



COUNTY OF LOS ANGELES, CALIFORNIA.

APPROVED: *Charles E. Adams* County Engineer  
APPROVED: *Alcega* Chief Engineer of County Sanitation District No. 15

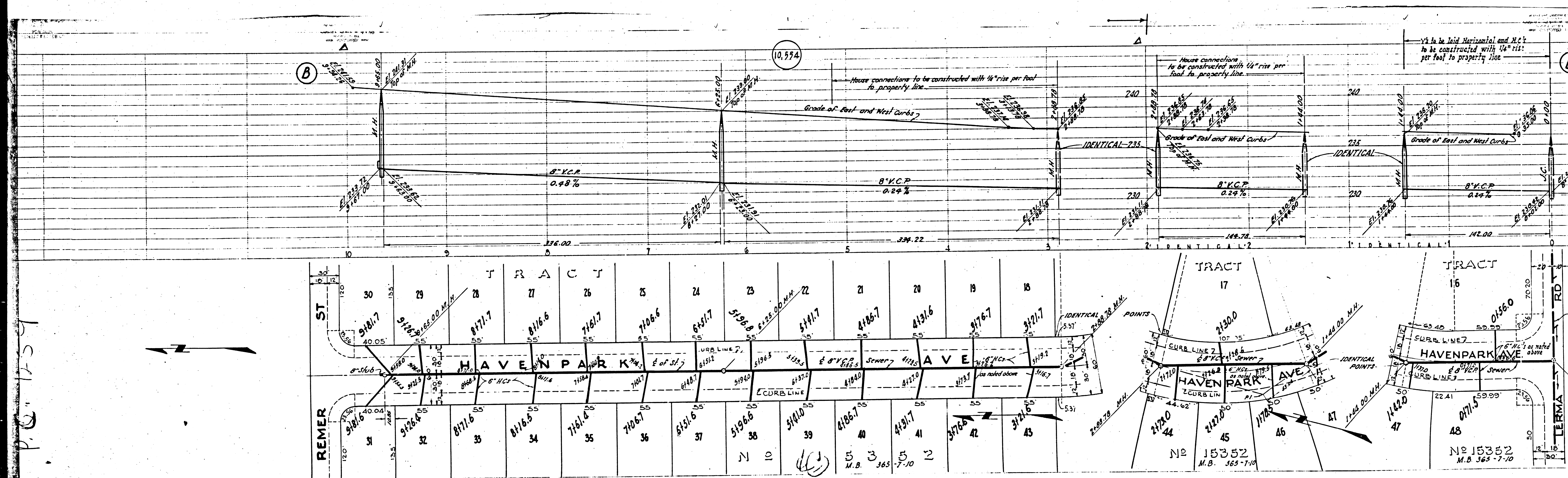
*Robert H. Larson 6-9-50*

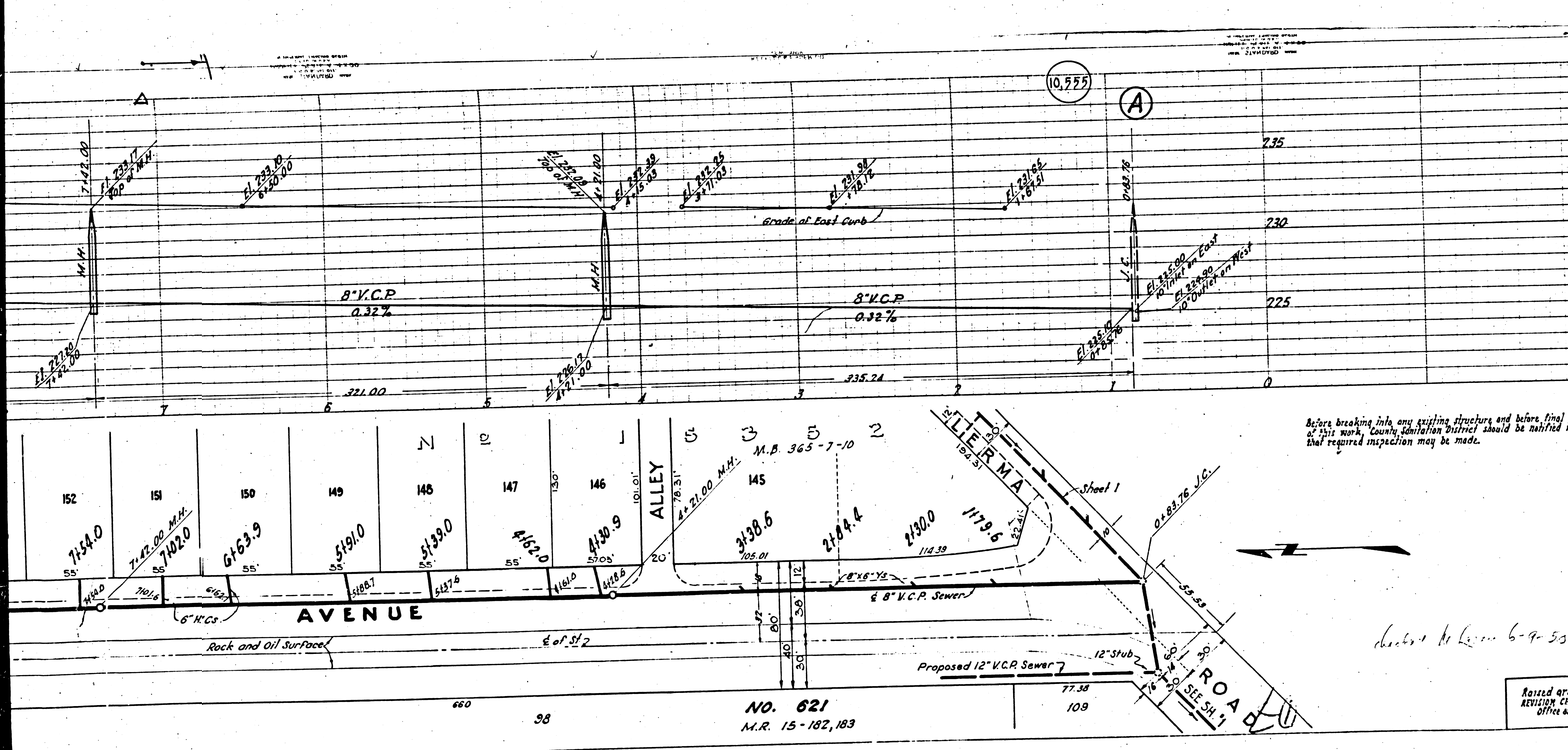
Checked grade line of Sewers 3-7-50  
REVISION CHECKED BY: *J. T. Anderson 3/12/50*  
Office of the County Engineer, C.E. No. 7103

CHECKED BY: *J. T. Anderson 3/12/50*  
Office of the County Engineer - Reg. C.E. No. 7103

Trim Line







PROFILE, ALIGNMENT AND GRADE OF  
**SANITARY SEWERS**  
 TO BE CONSTRUCTED IN  
**MERCED AVE.**  
 BETWEEN LERMA ROAD & ALESIA ST.  
**STROZIER AVE.**  
 BETWEEN LERMA ROAD & ALESIA ST.  
**PRIVATE CONTRACT NO. 1259**

W.S. 37  
**SHEET 3 OF 3 SHEETS** JANUARY 1950  
 SCALE: VERT. 1"=4'  
 HORIZ. 1"=40'

PREPARED IN THE OFFICES OF  
**ADAMS AND ELLS ENGINEERS**

BY *Harold H. Campbell*  
 REG. C.E. NO. 1852

FOR LEGEND  
 See Plan No. S-0-84  
 FOR CONSTRUCTION NOTES  
 See Sheet No. 1



COUNTY OF LOS ANGELES, CALIFORNIA.

APPROVED *Edmond*  
 County Engineer

APPROVED *acknow*  
 Chief Engineer of County  
 Sanitation District No. 18

check before 6-9-50

Revised grade line of Sewers 5-7-50  
 REVISION CHECKED BY *J. J. R. R.* 3/1/50  
 Office of the County Engineer, Reg. C.E. No. 7103

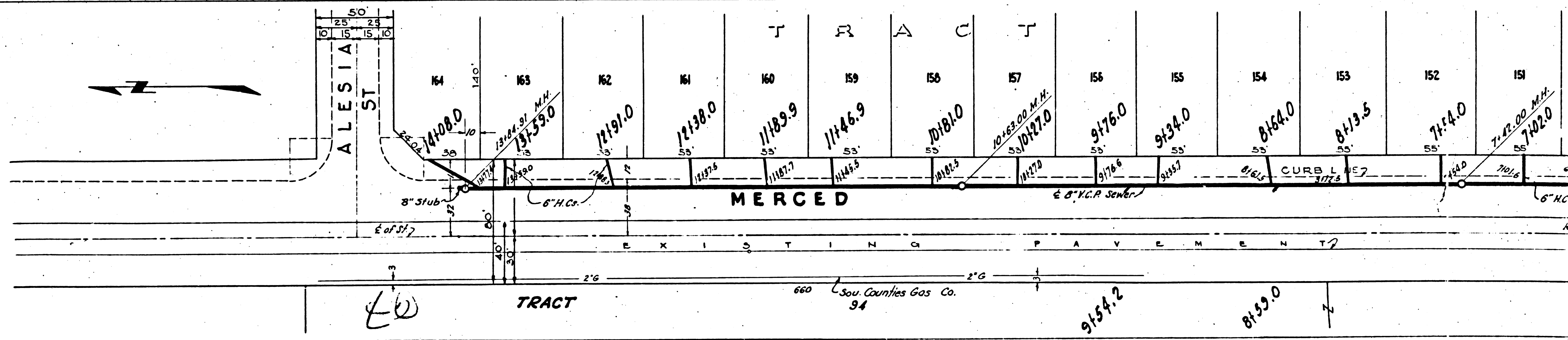
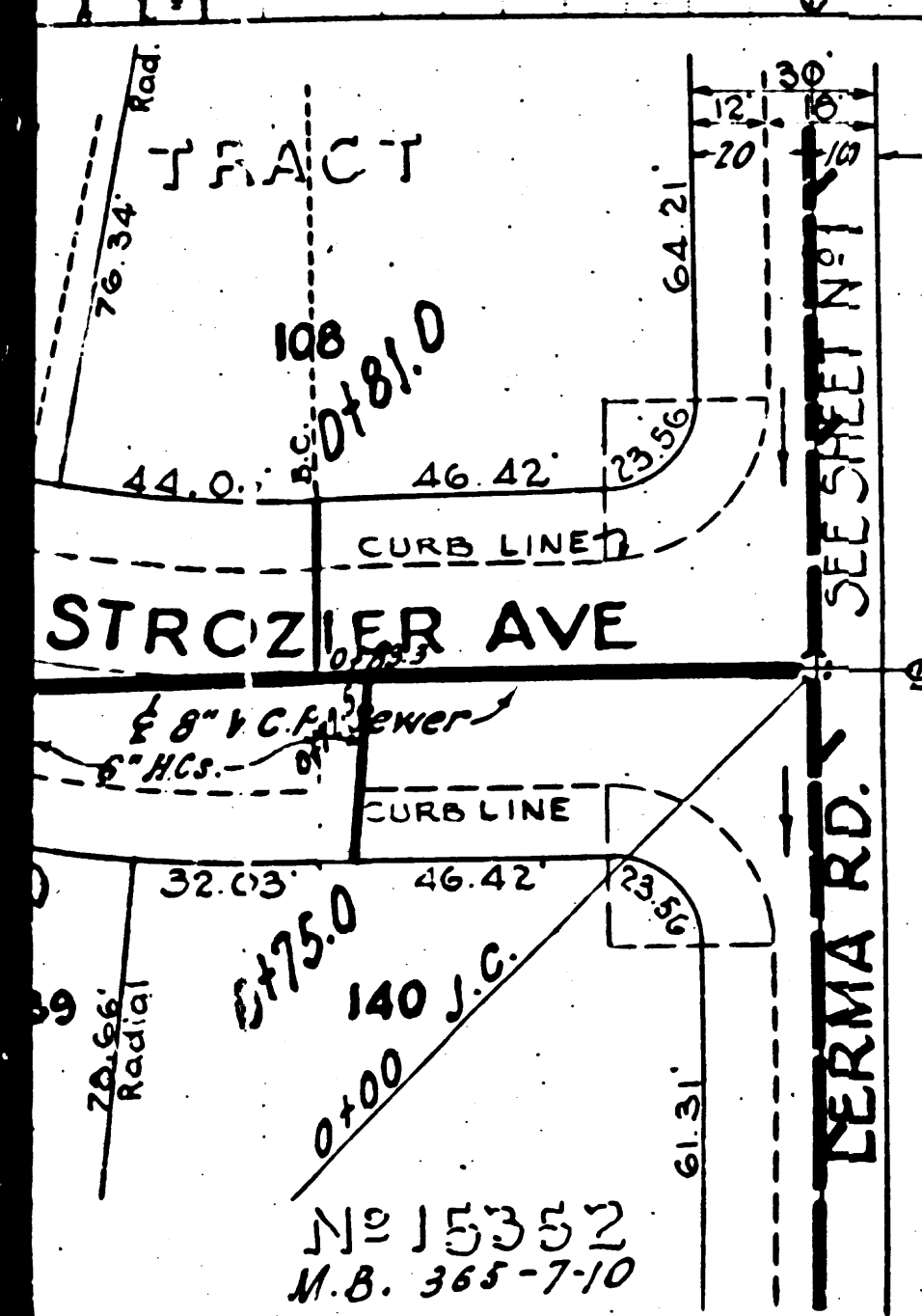
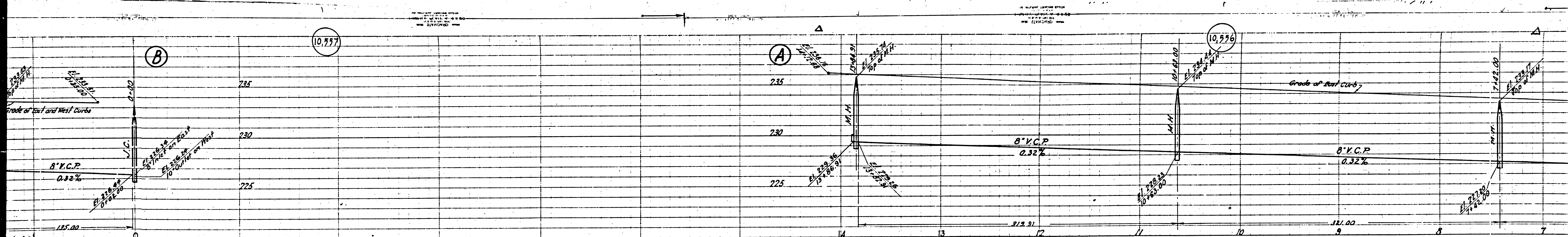
CHECKED BY *James T. Rafter* 2/17/50  
 Office of the County Engineer, Reg. C.E. No. 7103

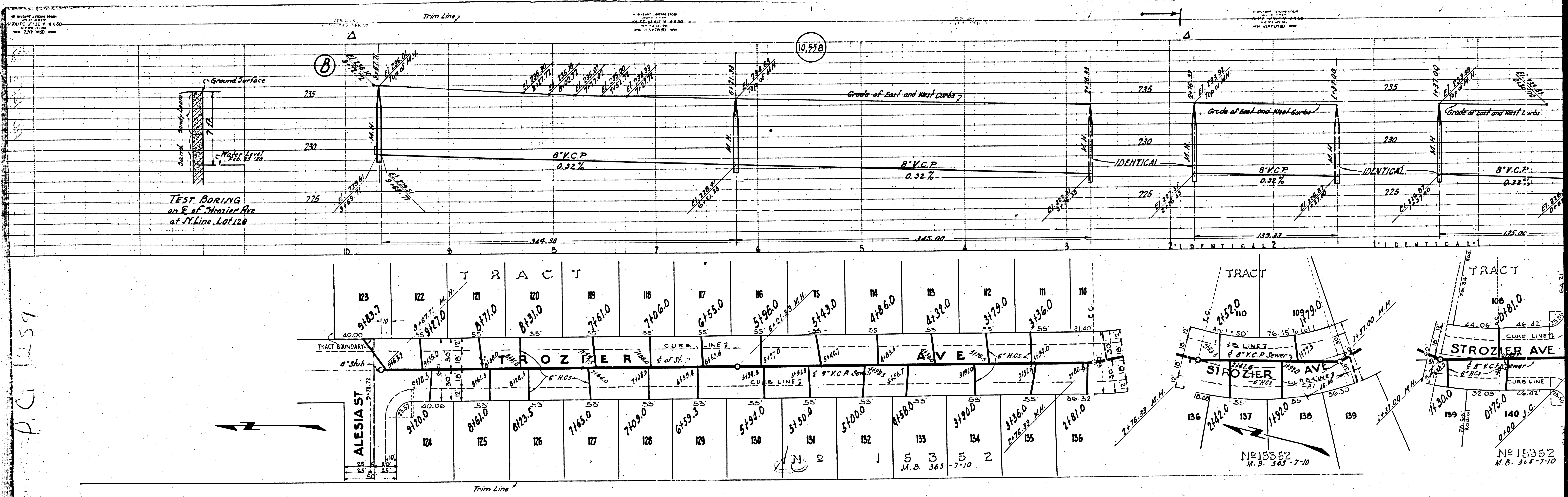
Trim Line

BC 1528

NO. 621  
 M.R. 15-182,183







TEST BORING  
on E. of Strozier Ave  
at Dykine Lot 128

P.C. 1259

NO 15352  
M.B. 365-7-10

NO 15352  
M.B. 365-7-10