

- Note:
1. Use standard strength pipe, except as noted.
  2. Use standard manhole frames and covers, S-a-117.
  3. Use cement mortar for all vitrified clay pipe joints.
  4. Resurface all trench within paved areas to meet L.A. Co. Road Dept. requirements.
  5. All structures to be back sewer structures, S-a-104.
  6. Construct house connections with invert of property line 3' below curb grade, except as noted.
  7. Encase 4" of sewer at points of interference with poles, as per S-a-112.

Note: No representation of the County Engineer will be made as to the accuracy of the location of, or the existence or non-existence of, any underground utility or structure within the limits of this project. This note applies to all sheets.

Note: The location of this plan by the County of Los Angeles does not constitute a representation as to the accuracy of the location of, or the existence or non-existence of, any underground utility or structure within the limits of this project. This note applies to all sheets.

- Note:
1. The grades to which this improvement is to be constructed are shown on plans and profiles.
  2. Grade points for top of curb, center line of street, or center line of alley are shown by circles on profiles. At all points between designated points the grade shall be established so as to conform to a straight line drawn between said designated points.
  3. Elevations are in feet above U.S.G.S. datum or mean sea level.
  4. This drawing and the data hereon are hereby made a part of the specifications.
  5. Work shall be constructed according to specifications on file in the Office of the County Engineer.
  6. Before work can be started, the contractor must obtain a permit to excavate in County streets from the L.A. Co. Road Dept., 211 S. Main St. and make a deposit with the County Engineer, 222 L.A. Co. Engineering Bldg. sufficient to cover cost of construction and record plans.
  7. Work shall be prosecuted only in the presence of the County Engineer.

B.M.  
L.A. Co. Rd. Dept. F.B. 284-B  
"A" cut ssk. in 36" Poplar tree,  
North side of Dunlap Crossing  
Road at Manzanar Road  
Elev. 190.643

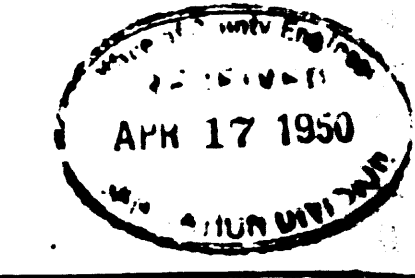
## PROFILE ALIGNMENT AND GRADE OF SANITARY SEWERS

TO BE CONSTRUCTED IN

- (A) SANITARY SEWER RIGHT OF WAY IN THE RANCHO PASO DE BARTOLO AND IN MINES AVE. (N.E. SIDE) FROM COFFMAN AND PICO ROAD TO 129 FEET SOUTH EAST OF MANZANAR AVENUE
  - (B) MANZANAR AVENUE FROM DUNLAP CROSSING ROAD TO MINES AVENUE
  - (C) MANZANAR AVENUE FROM MINES AVENUE TO COOLHURST DRIVE
- IN TRACT NO. 14445, MB. 363-42, 43, 44, 45, 48.

PRIVATE CONTRACT NO. 1263  
W.S. 36  
SHEET 1 OF 5 SHEETS

PREPARED BY Leon W. Moore REG. C.E. NO. 3157  
APPROVED BY [Signature] COUNTY ENGINEER  
APPROVED BY [Signature] OFFICE ENGINEER  
FOR CHIEF ENGINEER OF COUNTY  
SANITATION DISTRICT NO. 2  
CHECKED BY T. Roston 4/10/50  
OFFICE OF THE COUNTY ENGINEER  
REG. C.E. NO. 7103



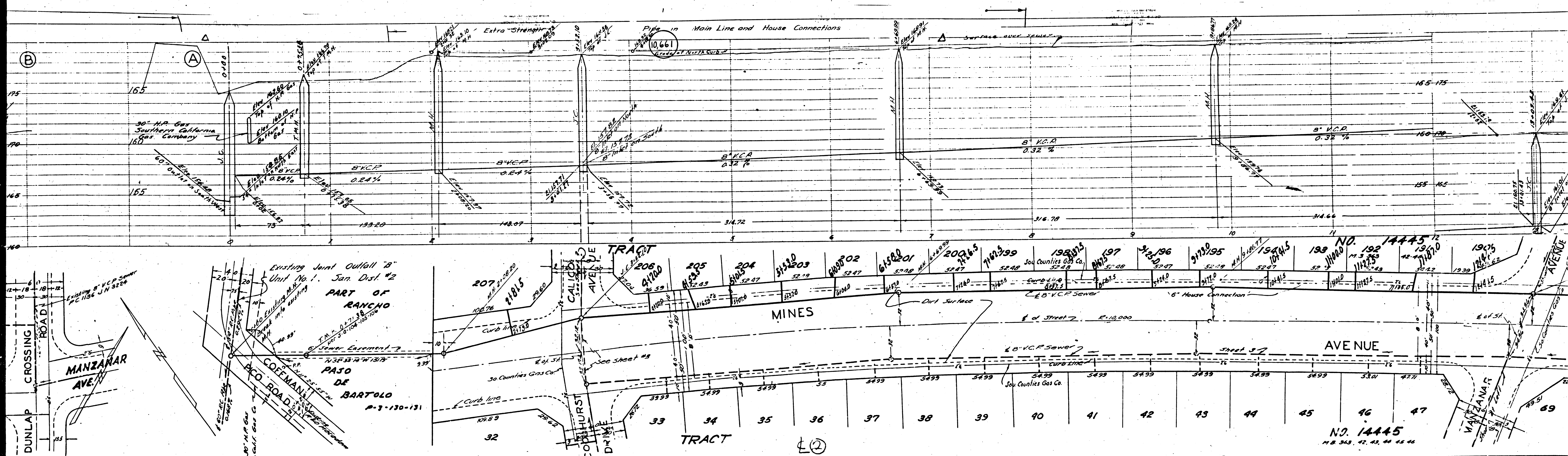
INDEX MAP  
(No scale)  
P.C. 1263  
J.N. 3350

LD

Checked 8-10-50 [Signature]

7/21/50



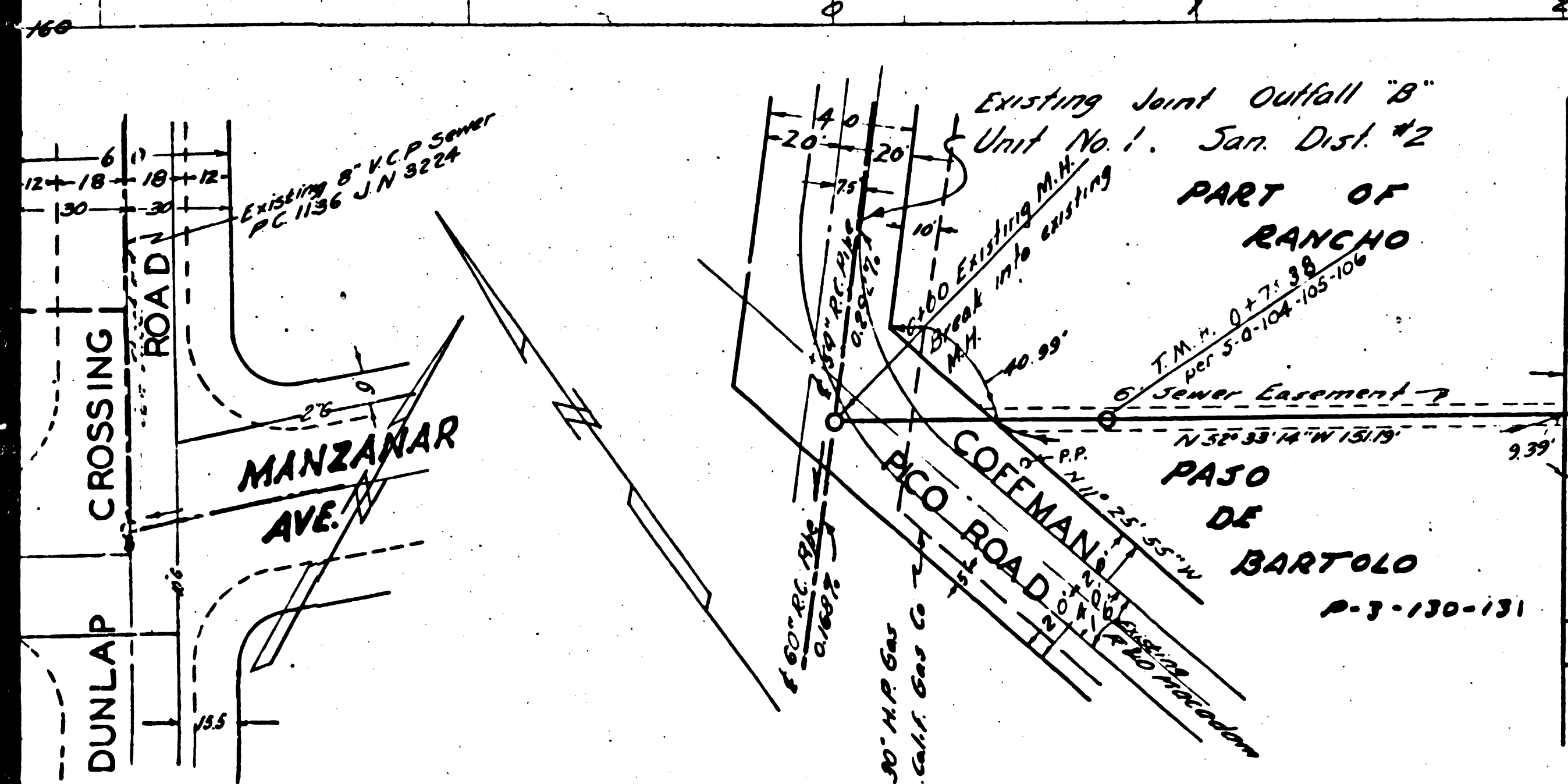


Profile View Data:

Station	Elevation	Grade	Notes
165	165.00	0.84%	8" V.C.P.
175	175.00	0.84%	8" V.C.P.
185	185.00	0.84%	8" V.C.P.
195	195.00	0.84%	8" V.C.P.
205	205.00	0.84%	8" V.C.P.
215	215.00	0.84%	8" V.C.P.
225	225.00	0.84%	8" V.C.P.
235	235.00	0.84%	8" V.C.P.
245	245.00	0.84%	8" V.C.P.
255	255.00	0.84%	8" V.C.P.
265	265.00	0.84%	8" V.C.P.
275	275.00	0.84%	8" V.C.P.
285	285.00	0.84%	8" V.C.P.
295	295.00	0.84%	8" V.C.P.
305	305.00	0.84%	8" V.C.P.
315	315.00	0.84%	8" V.C.P.
325	325.00	0.84%	8" V.C.P.
335	335.00	0.84%	8" V.C.P.
345	345.00	0.84%	8" V.C.P.
355	355.00	0.84%	8" V.C.P.
365	365.00	0.84%	8" V.C.P.
375	375.00	0.84%	8" V.C.P.
385	385.00	0.84%	8" V.C.P.
395	395.00	0.84%	8" V.C.P.
405	405.00	0.84%	8" V.C.P.
415	415.00	0.84%	8" V.C.P.
425	425.00	0.84%	8" V.C.P.
435	435.00	0.84%	8" V.C.P.
445	445.00	0.84%	8" V.C.P.
455	455.00	0.84%	8" V.C.P.
465	465.00	0.84%	8" V.C.P.
475	475.00	0.84%	8" V.C.P.

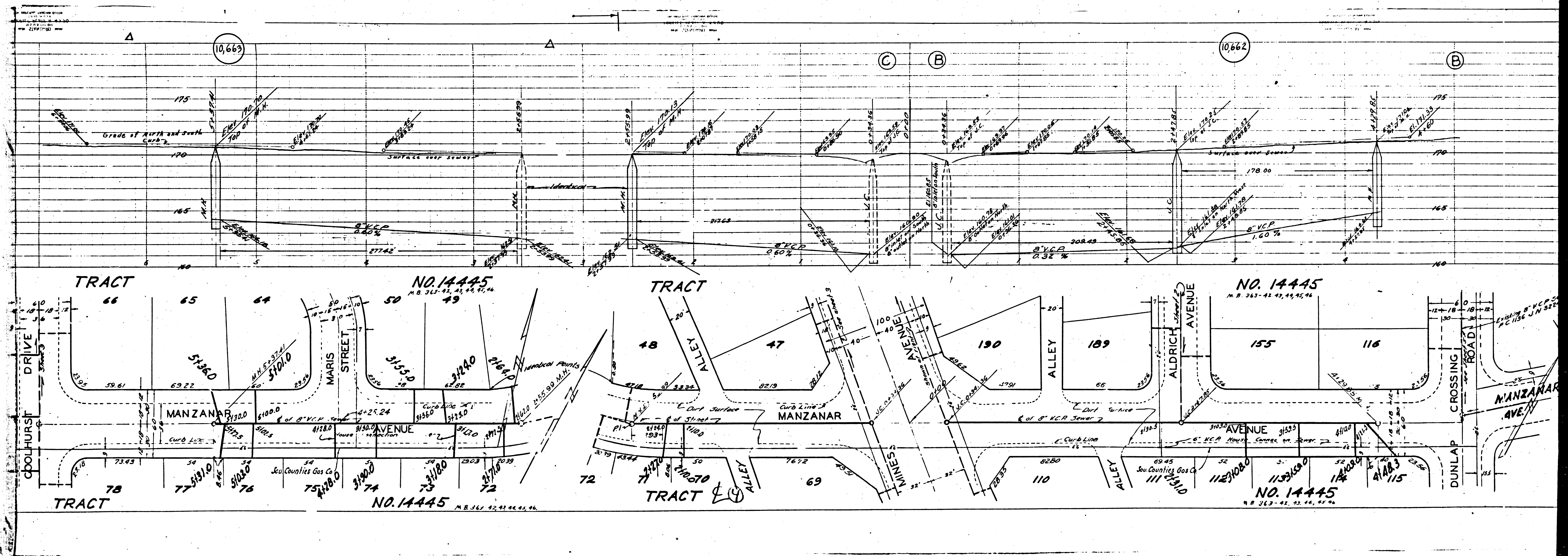
Plan View Data:

Lot No.	Area (sq. ft.)	Notes
197	5248	8" V.C.P. Sewer
198	5248	8" V.C.P. Sewer
199	5248	8" V.C.P. Sewer
200	5248	8" V.C.P. Sewer
201	5248	8" V.C.P. Sewer
202	5248	8" V.C.P. Sewer
203	5248	8" V.C.P. Sewer
204	5248	8" V.C.P. Sewer
205	5248	8" V.C.P. Sewer
206	5248	8" V.C.P. Sewer
207	5248	8" V.C.P. Sewer
32	10889	8" V.C.P. Sewer
33	5499	8" V.C.P. Sewer
34	5499	8" V.C.P. Sewer
35	5499	8" V.C.P. Sewer
36	5499	8" V.C.P. Sewer
37	5499	8" V.C.P. Sewer
38	5499	8" V.C.P. Sewer
39	5499	8" V.C.P. Sewer
40	5499	8" V.C.P. Sewer
41	5499	8" V.C.P. Sewer
42	5499	8" V.C.P. Sewer
43	5499	8" V.C.P. Sewer
44	5499	8" V.C.P. Sewer
45	5499	8" V.C.P. Sewer
46	5499	8" V.C.P. Sewer
47	5499	8" V.C.P. Sewer

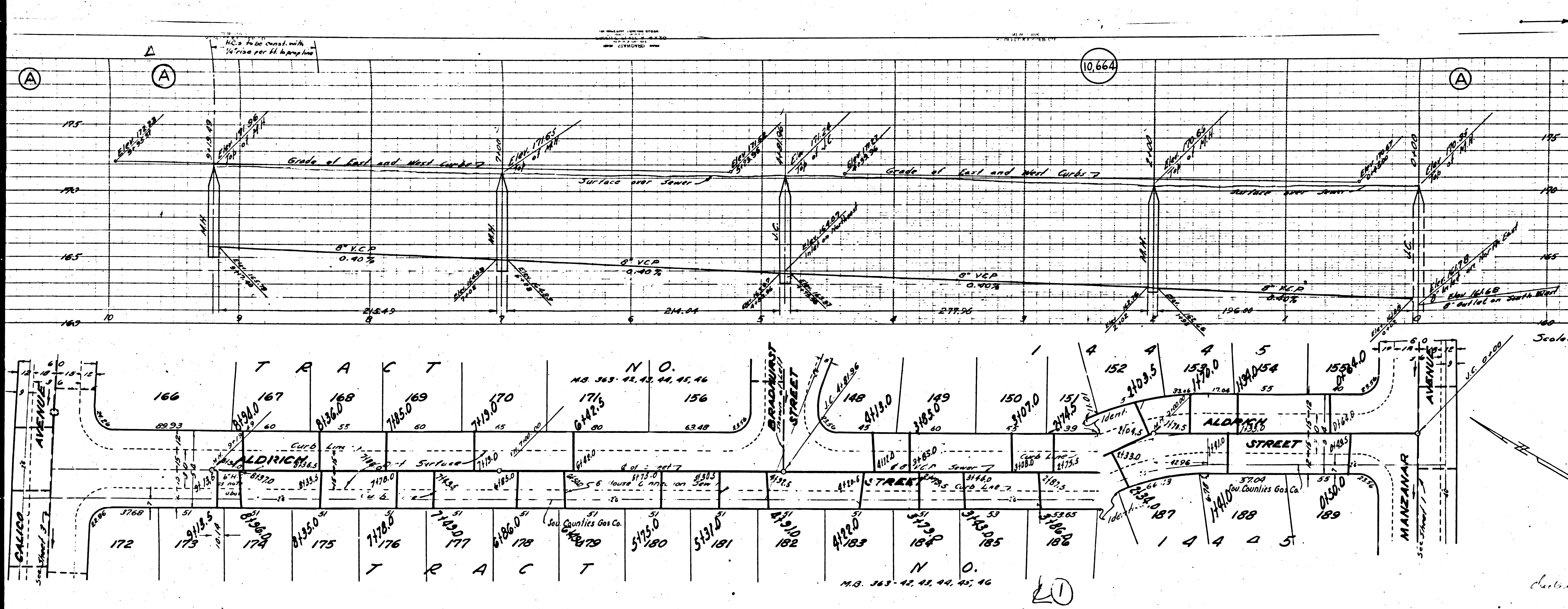


NO. 14445  
M.B. 34.9, 42, 43, 44, 45, 46



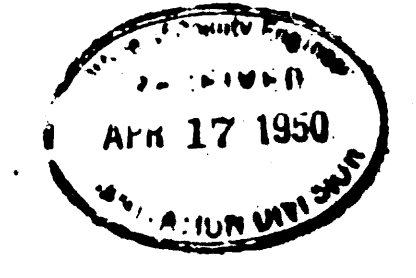






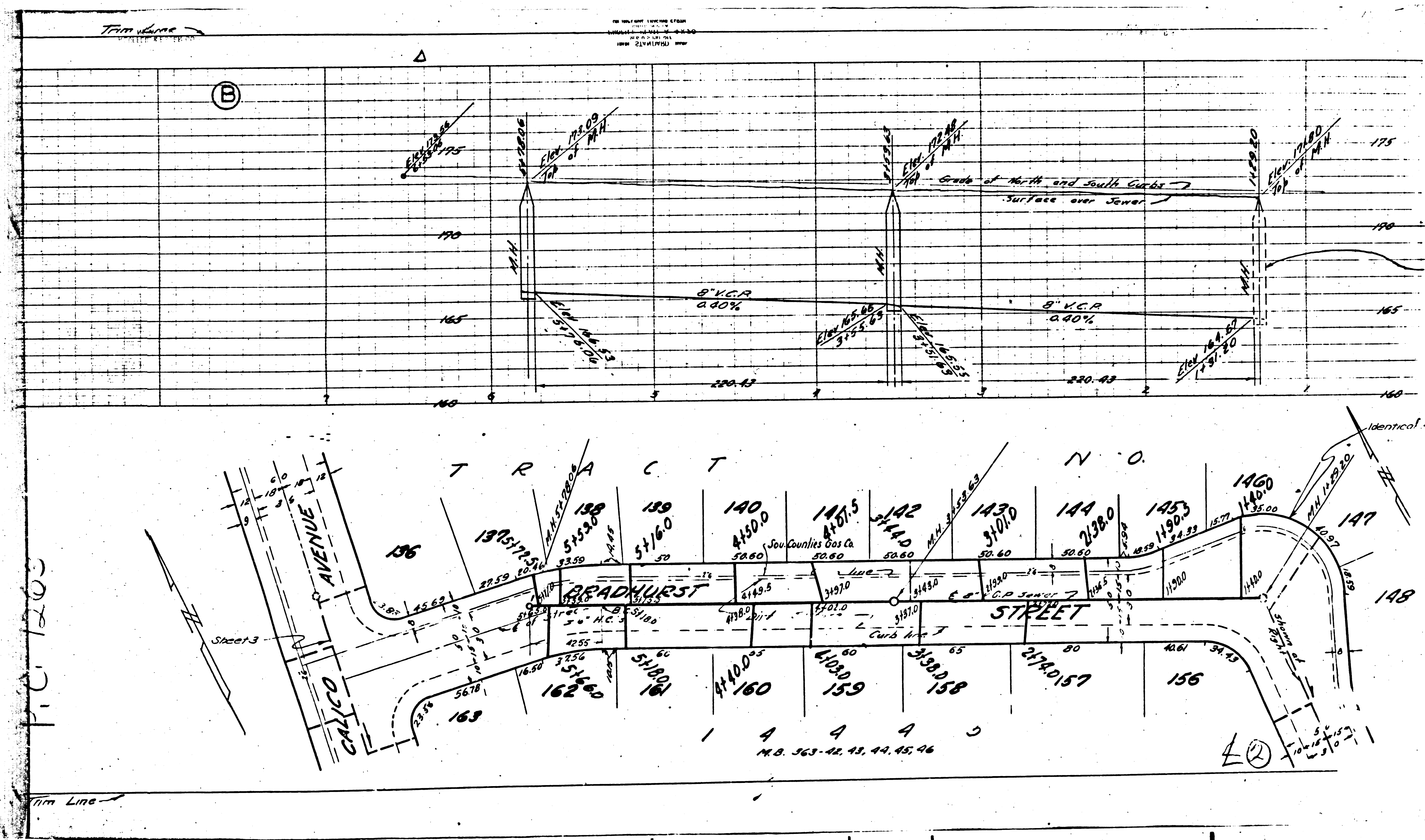
PROFILE ALIGNMENT AND GRADE OF  
**SANITARY SEWERS**  
 TO BE CONSTRUCTED IN  
 (A) ALDRICH STREET FROM MANZANAR AVENUE TO CALICO AVENUE  
 (B) BRADHURST STREET FROM ALDRICH STREET TO CALICO AVENUE  
 IN TRACT NO. 14445, M.B. 363-42, 43, 44, 45, 46  
 PRIVATE CONTRACT NO. 1263  
 W.S. 36

SHEET 2 OF 5 SHEETS  
 PREPARED BY Leon W. Moore REG. C.E. NO. 2157  
 APPROVED BY [Signature] COUNTY ENGINEER  
 APPROVED BY [Signature] OFFICE ENGINEER  
 FOR CHIEF ENGINEER OF COUNTY SANITATION DISTRICT NO. 2  
 CHECKED BY James T. Rastrom 4/10/50  
 OFFICE OF THE COUNTY ENGINEER REG. C.E. NO. 7103  
 FOR CONSTRUCTION NOTES SEE SHEET 1

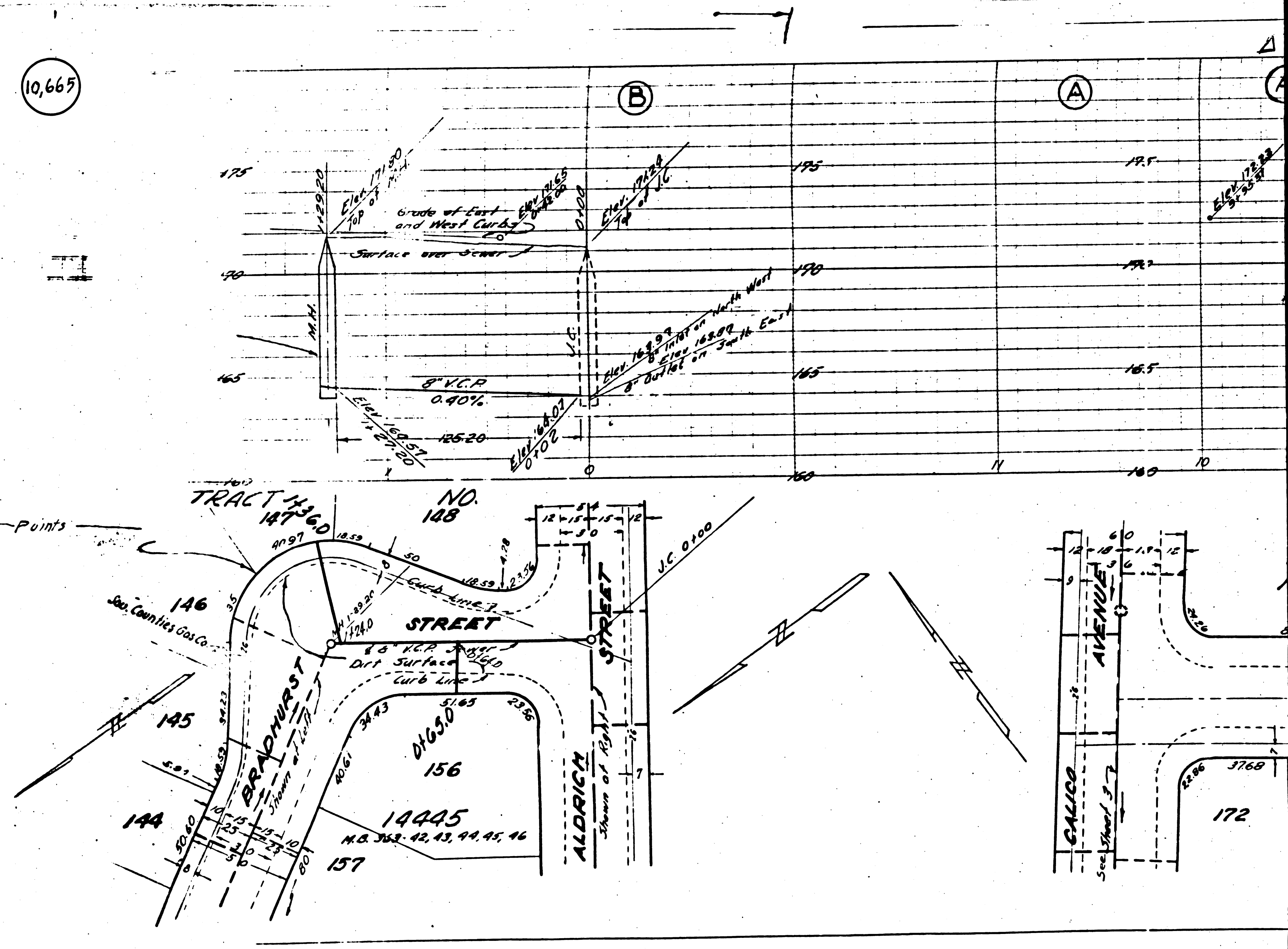


Charles E. Moore  
 7/10/50  
 Tim Line

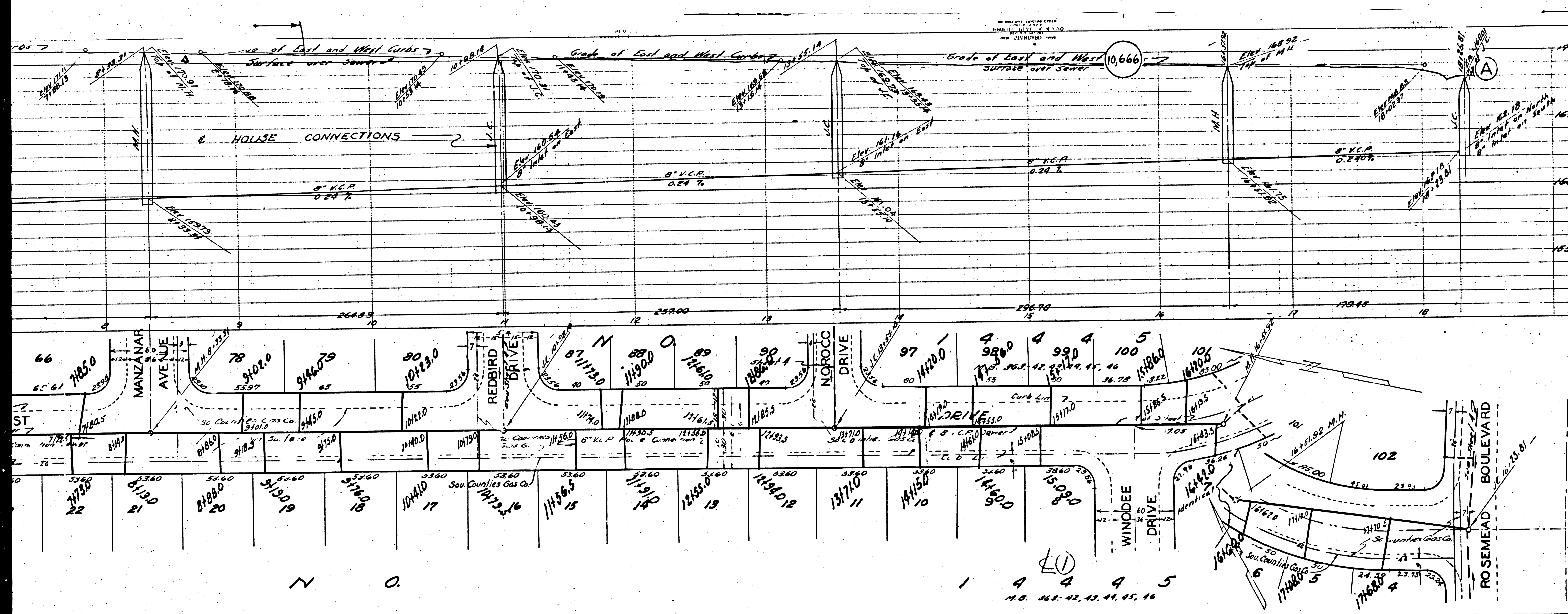




10,667





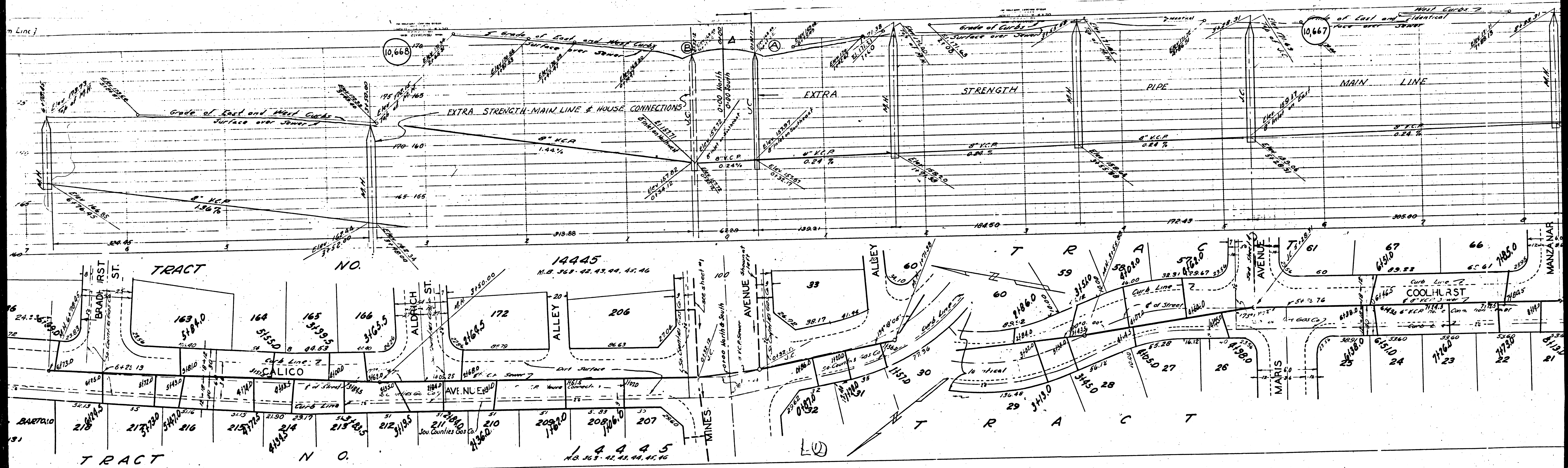


PROFILE ALIGNMENT AND GRADE OF  
**SANITARY SEWERS**  
 TO BE CONSTRUCTED IN  
 (A) COOLHURST DRIVE FROM ROSEMEAD BOULEVARD TO MINES AVENUE  
 (B) CALICO AVENUE FROM MINES AVENUE TO DUNLAP CROSSING ROAD  
 (C) MINES AVENUE (SOUTHWEST SIDE) FROM COOLHURST DRIVE TO 88' SOUTHWEST OF MANZANAR AVENUE  
 IN TRACT NO. 144 45; MB. 363-42, 43, 44, 45, 46  
 PRIVATE CONTRACT NO. 1263  
 WS. 36  
 SHEET 3 OF 4 SHEETS

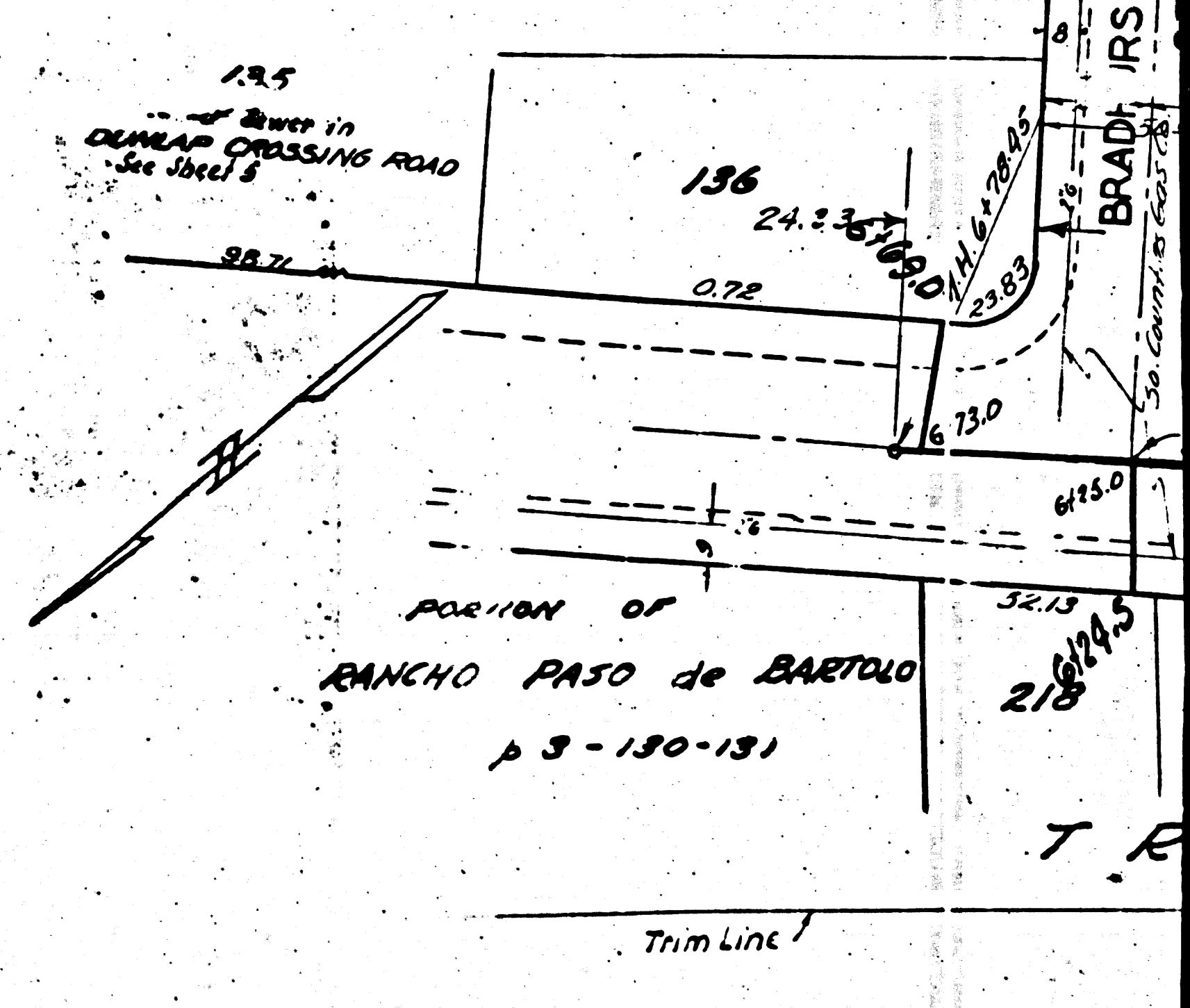
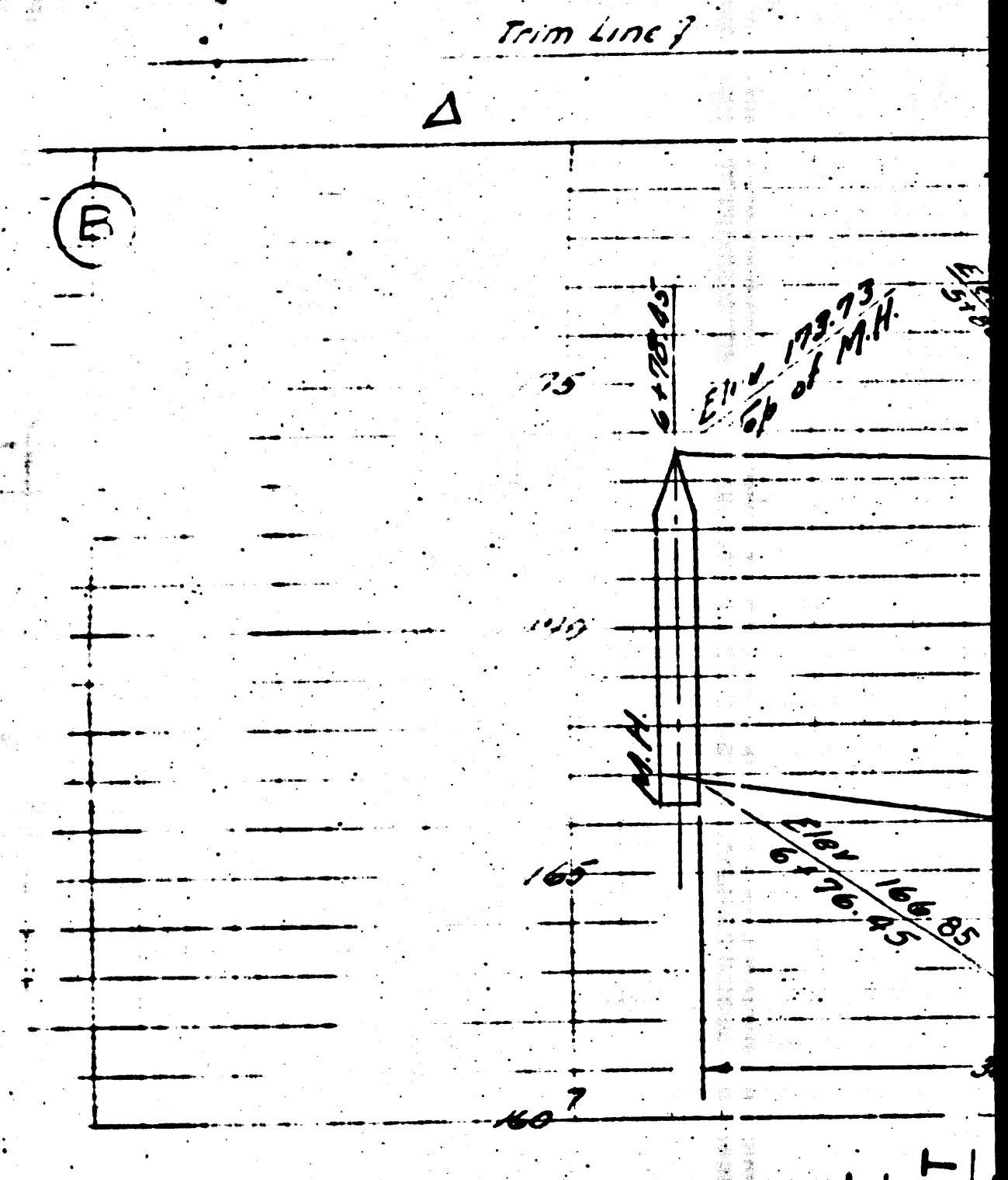
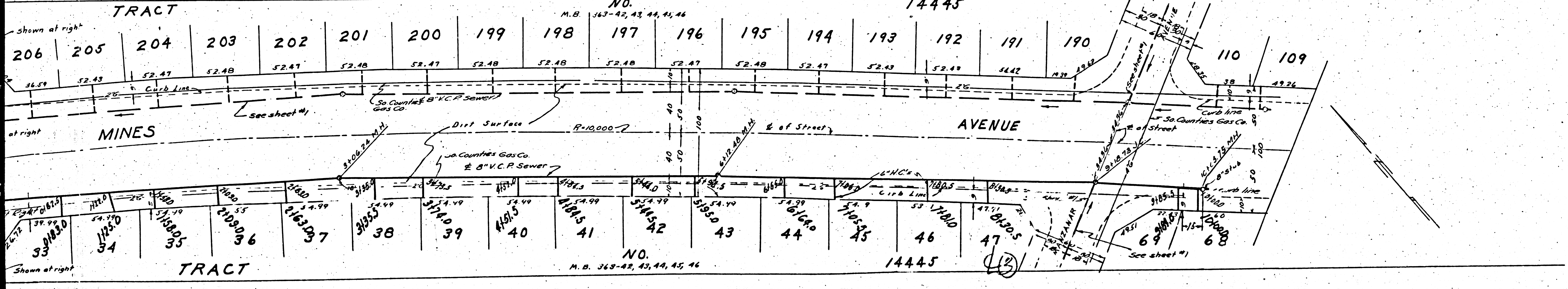
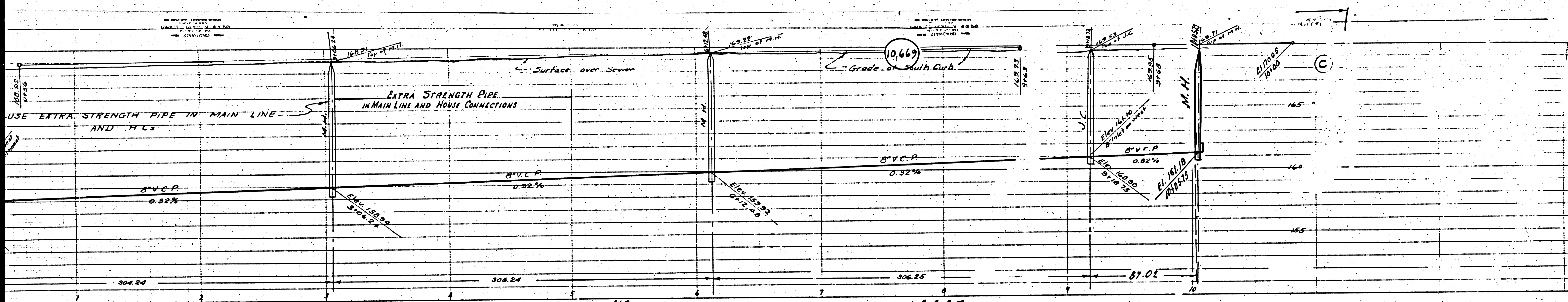
PREPARED BY *Leon W. Moore* REG. C. E. NO. 2157  
 APPROVED BY *[Signature]* COUNTY ENGINEER  
 APPROVED BY *[Signature]* OFFICE ENGINEER  
 FOR CHIEF ENGINEER OF COUNTY SANITATION DISTRICT NO. 2  
 CHECKED BY *[Signature]* OFFICE OF THE COUNTY ENGINEER  
 REG. C. E. NO. 7102

FOR CONSTRUCTION NOTES SEE SHEET 1  
 Scale Vert. 1"=4'  
 Horiz. 1"=40'  
 APR 17 1950  
*[Signature]*

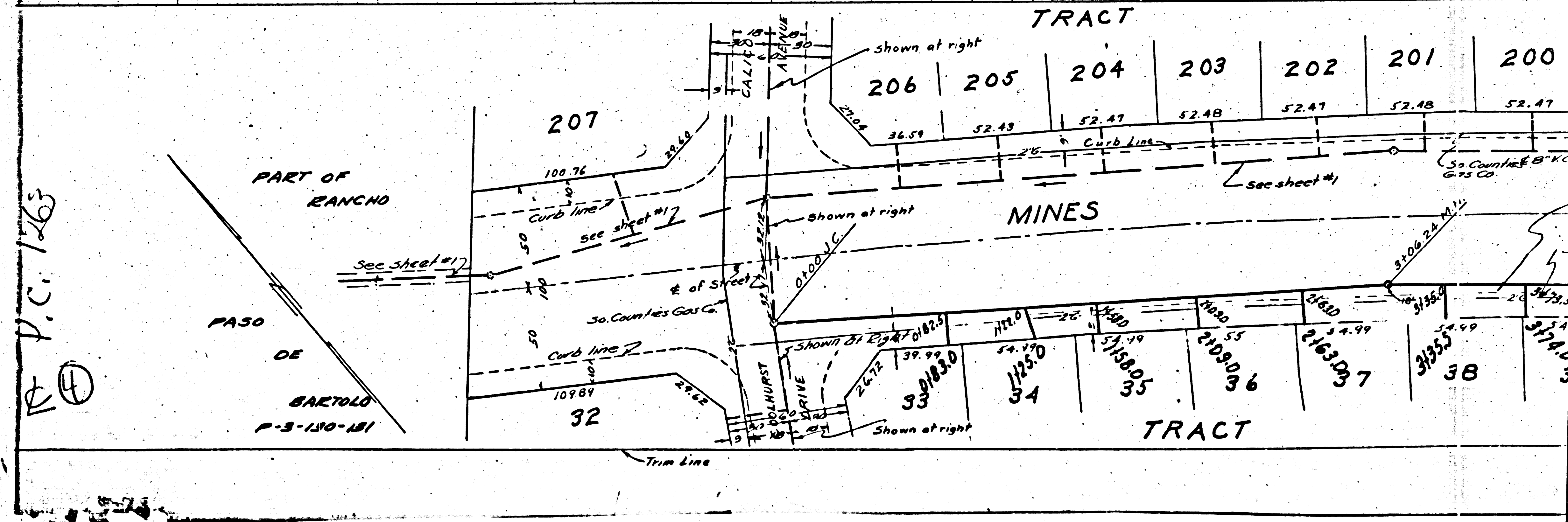
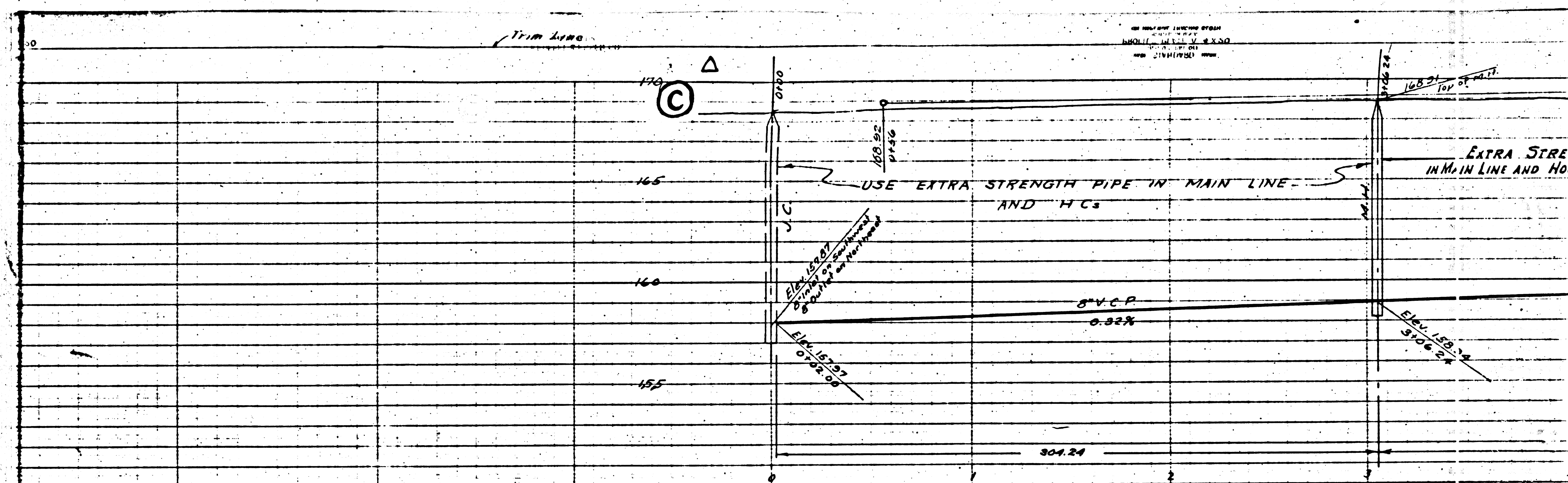






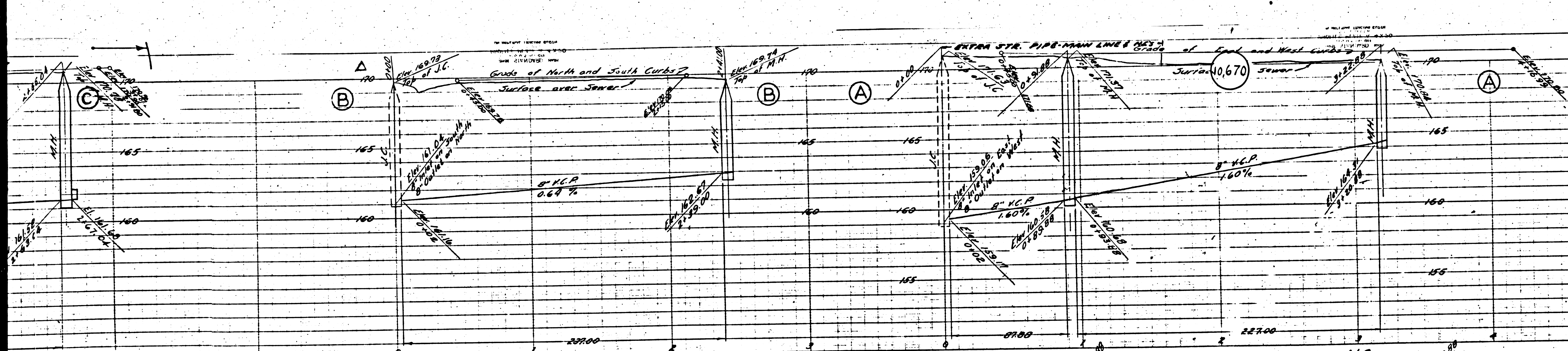






P.C. 1263



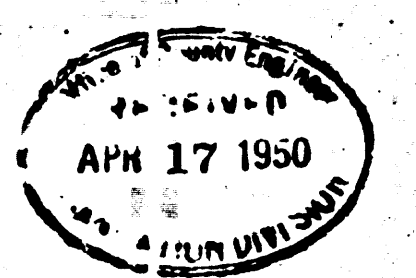


PROFILE ALIGNMENT AND GRADE OF  
SANITARY SEWERS

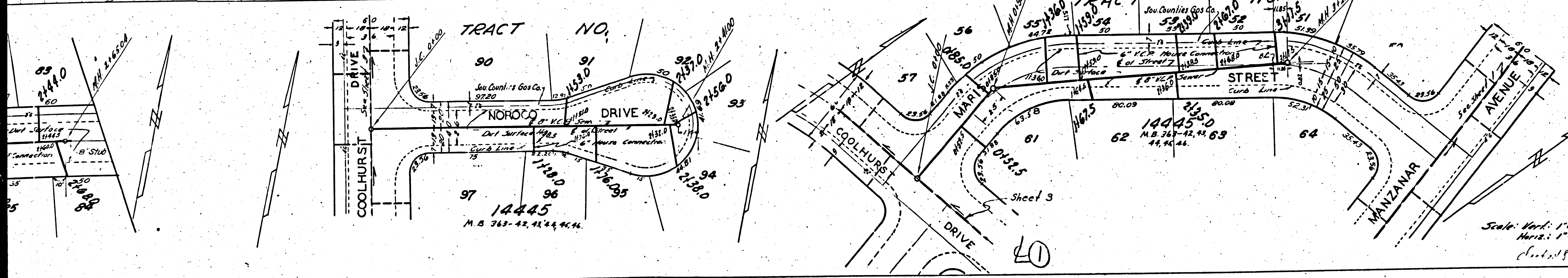
- TO BE CONSTRUCTED IN
- (A) MARIS STREET FROM COOLHURST DRIVE TO MANZANAR AVENUE
  - (B) NOROCO DRIVE FROM COOLHURST DRIVE TO 241' EAST OF COOLHURST DRIVE
  - (C) REDBIRD DRIVE FROM COOLHURST DRIVE TO 265' EAST OF COOLHURST DRIVE
  - (D) ROSEMEAD BOULEVARD FROM 391' EAST OF COOLHURST DRIVE TO 232' WEST OF COOLHURST DRIVE

IN TRACT NO. 14445, M.B. 363-42, 43, 44, 45, 46.  
FOR CONSTRUCTION NOTES SEE SHEET 1  
PRIVATE CONTRACT NO. 1263  
W.S. 36

SHEET 4 OF 5 SHEETS

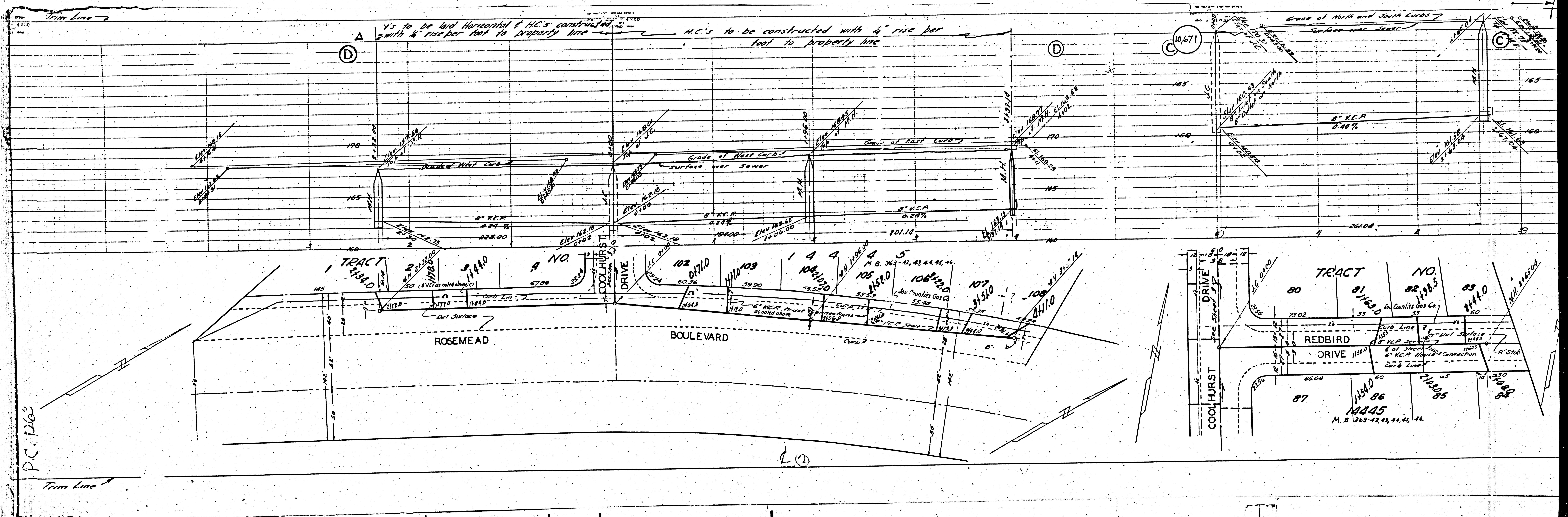


PREPARED BY Leon W. Moore REG. C.E. NO. 3157  
 APPROVED BY [Signature] COUNTY ENGINEER  
 APPROVED BY [Signature] OFFICE ENGINEER  
 FOR CHIEF ENGINEER OF COUNTY SANITATION DISTRICT NO. 2  
 CHECKED BY [Signature] 2/10/50  
 OFFICE OF THE COUNTY ENGINEER REG. C.E. NO. 7103



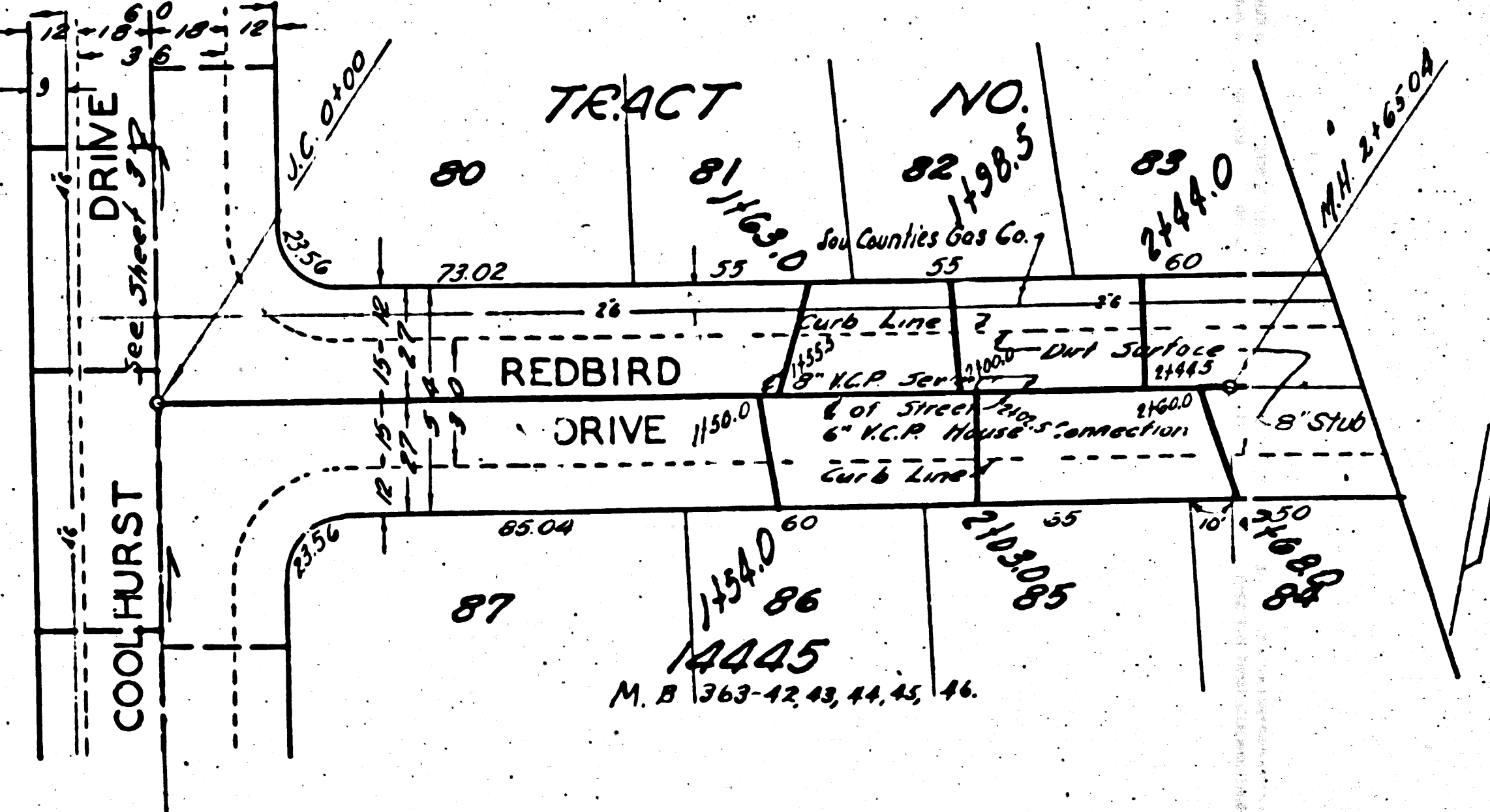
Scale: Vert. 1"=4'  
 Horiz. 1"=40'  
 Date: 2-18-50  
 [Signature]



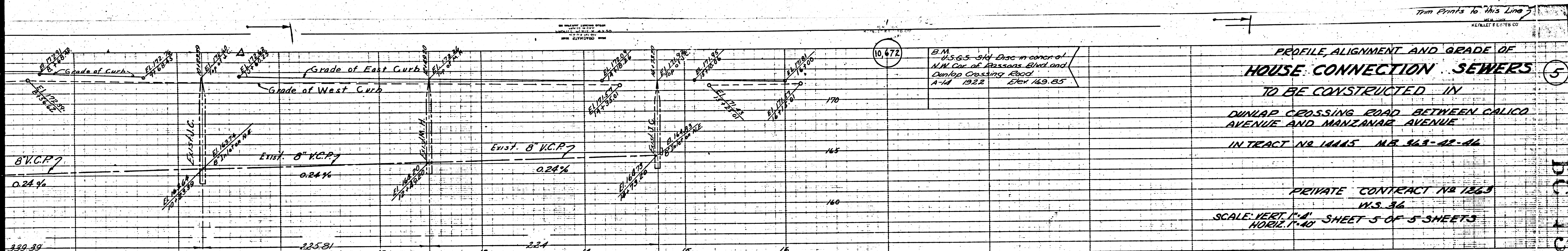


P.C. 1263

20







Trim Prints to this Line

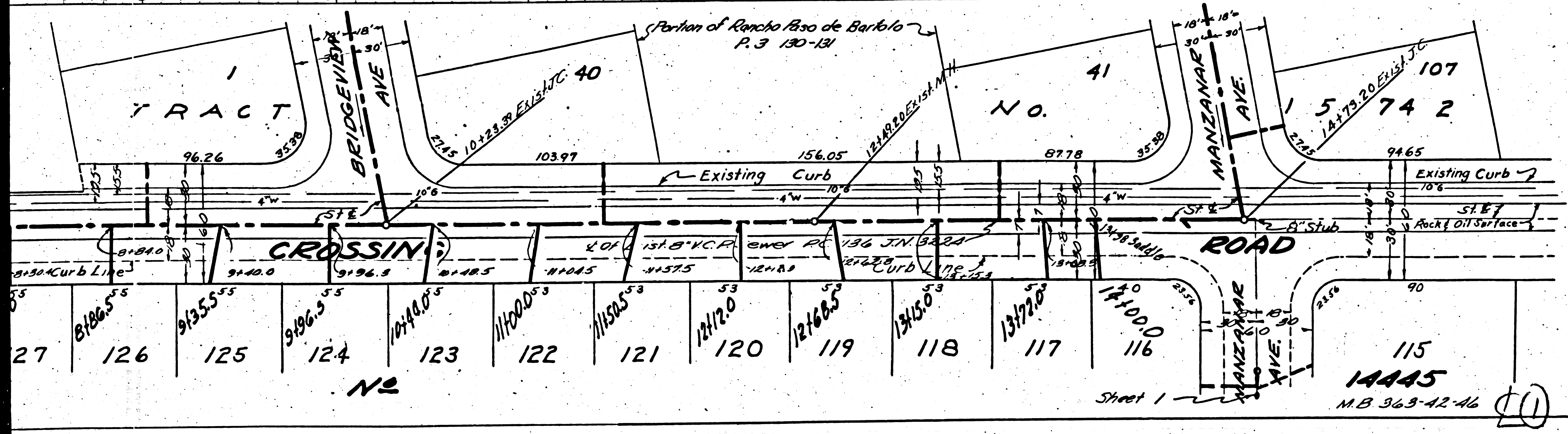
KENTLET 7 20' 18' 00'

**PROFILE, ALIGNMENT AND GRADE OF  
HOUSE CONNECTION SEWERS**

TO BE CONSTRUCTED IN  
DUNLAP CROSSING ROAD BETWEEN CALICO  
AVENUE AND MANZANAR AVENUE  
IN TRACT NO 14445 MB 963-42-46

PRIVATE CONTRACT NO 1263  
W.S. 36

SCALE: VERT. 1"=4'  
HORIZ. 1"=40' SHEET 5 OF 5 SHEETS



PREPARED BY Leon W. Moran R.E. 3157

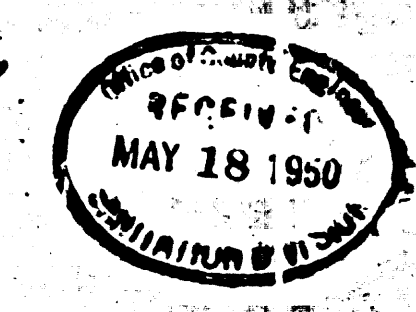
APPROVED [Signature]  
COUNTY ENGINEER

APPROVED [Signature]  
CHIEF ENGINEER OF COUNTY  
SANITATION DISTRICT NO. 2

CHECKED BY [Signature] 5-9-50  
OFFICE OF THE COUNTY  
ENGINEER, REG. CE NO. 6322

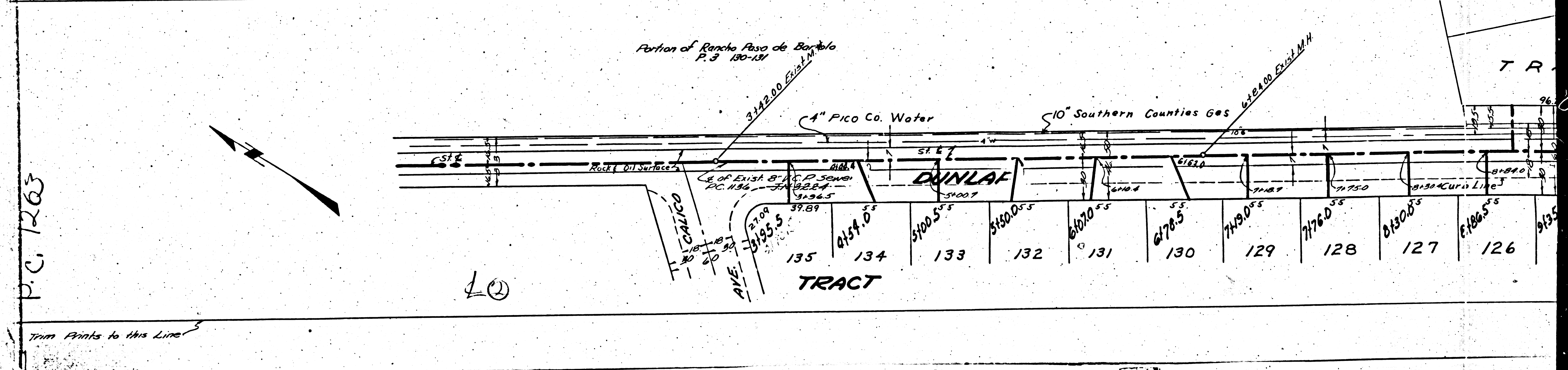
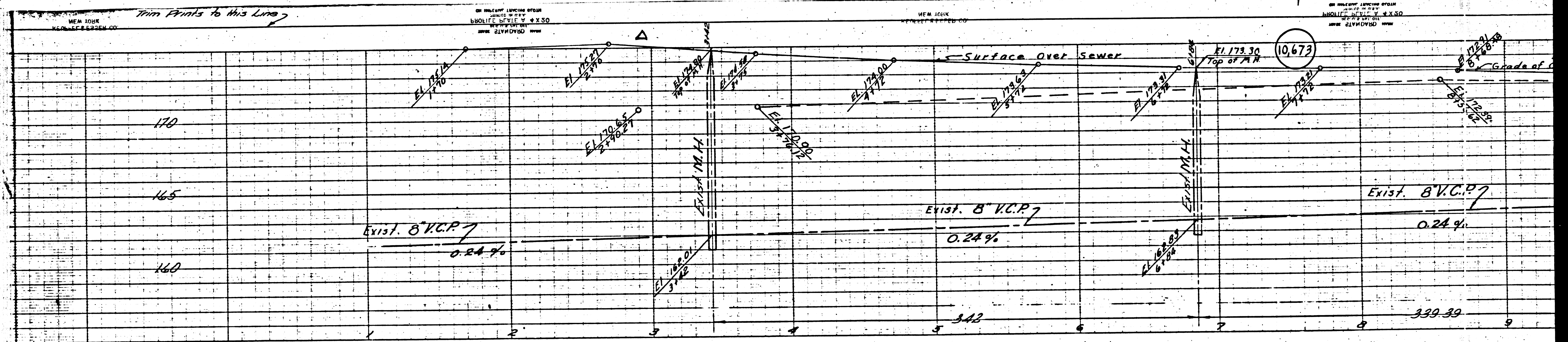
FOR CONSTRUCTION NOTES, SEE SHEET 1

Trim Prints to this Line

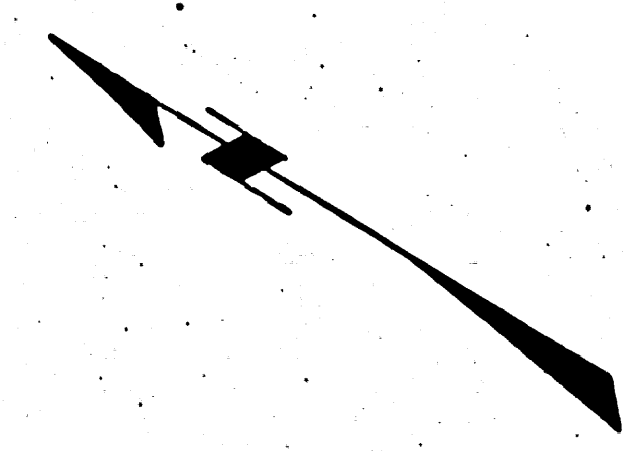


Leads 5-1-50 W. Moran





P.C. 1263



Trim Prints to this Line

Trim Prints to this Line

NEW YORK  
ENGINEERS  
INCORPORATED  
110 NASSAU ST.  
NEW YORK

NEW YORK  
ENGINEERS  
INCORPORATED  
110 NASSAU ST.  
NEW YORK

NEW YORK  
ENGINEERS  
INCORPORATED  
110 NASSAU ST.  
NEW YORK

Portion of Rancho Paso de Boracho  
P. 3 180-181

T R

40

TRACT