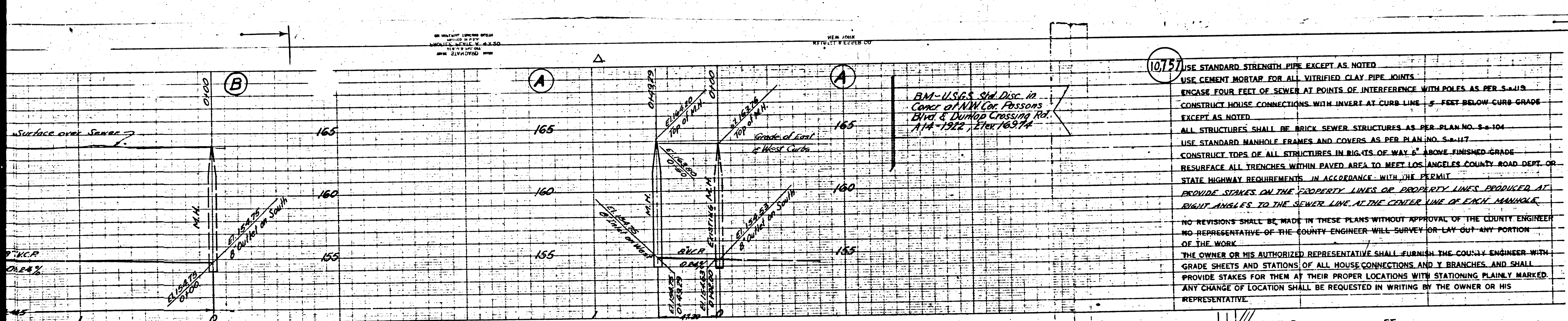


SEE PLAN NO. 15026  
 1/2" = 100'  
 1/4" = 50'  
 1/8" = 25'

SEE PLAN NO. 15026  
 1/2" = 100'  
 1/4" = 50'  
 1/8" = 25'



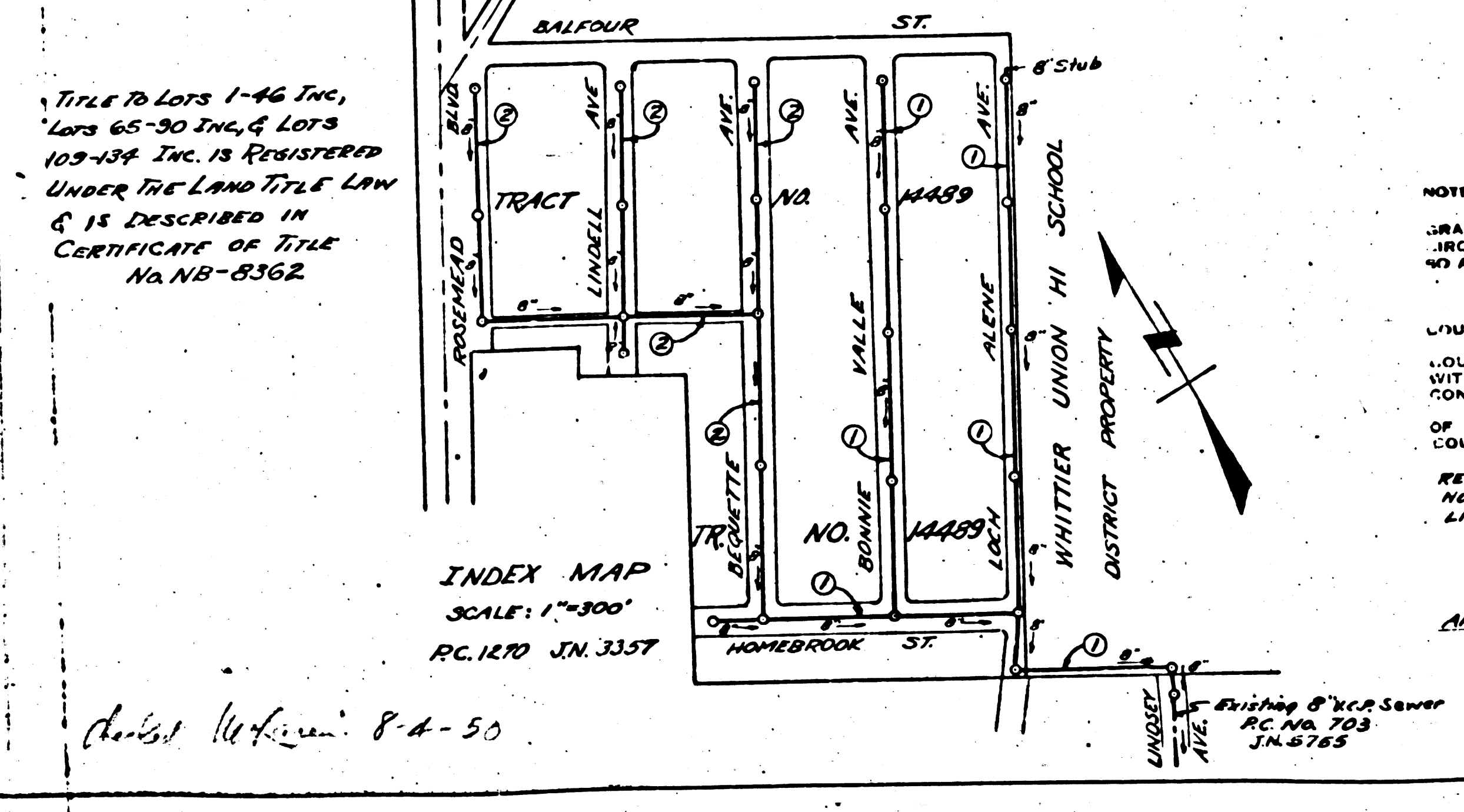
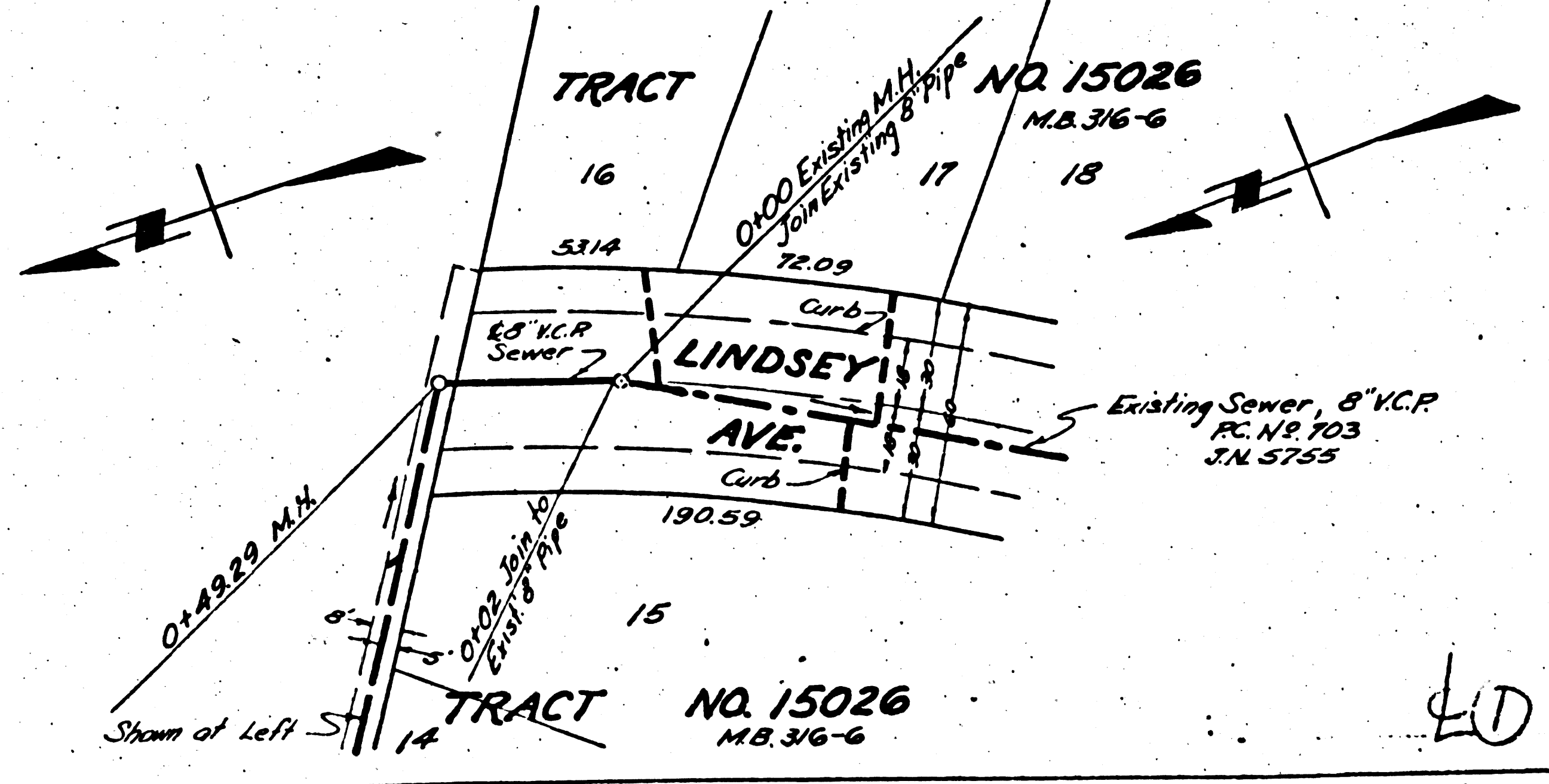
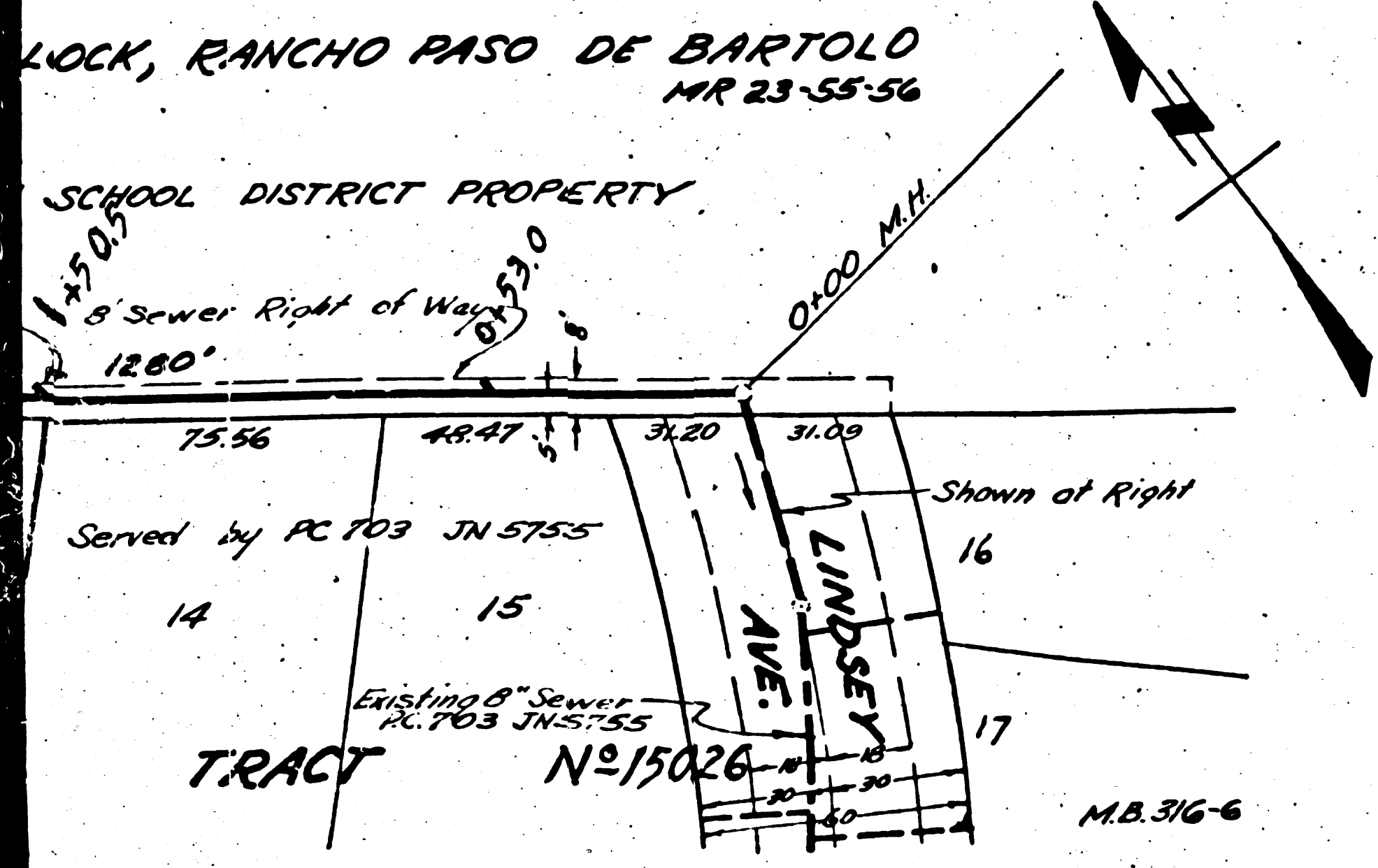
10757 USE STANDARD STRENGTH PIPE EXCEPT AS NOTED  
 USE CEMENT MORTAR FOR ALL VITRIFIED CLAY PIPE JOINTS  
 ENGAGE FOUR FEET OF SEWER AT POINTS OF INTERFERENCE WITH POLES AS PER S.4.115  
 CONSTRUCT HOUSE CONNECTIONS WITH INVERT AT CURB LINE 5 FEET BELOW CURB GRADE EXCEPT AS NOTED  
 ALL STRUCTURES SHALL BE BRICK SEWER STRUCTURES AS PER PLAN NO. S-4-104  
 USE STANDARD MANHOLE FRAMES AND COVERS AS PER PLAN NO. S-4-117  
 CONSTRUCT TOPS OF ALL STRUCTURES IN BIG-TS OF WAY 6" ABOVE FINISHED GRADE  
 RESURFACE ALL TRENCHES WITHIN PAVED AREA TO MEET LOS ANGELES COUNTY ROAD DEPT. OR STATE HIGHWAY REQUIREMENTS IN ACCORDANCE WITH THE PERMIT  
 PROVIDE STAKES ON THE PROPERTY LINES OR PROPERTY LINES PRODUCED AT RIGHT ANGLES TO THE SEWER LINE AT THE CENTER LINE OF EACH MANHOLE  
 NO REVISIONS SHALL BE MADE IN THESE PLANS WITHOUT APPROVAL OF THE COUNTY ENGINEER  
 NO REPRESENTATIVE OF THE COUNTY ENGINEER WILL SURVEY OR LAY OUT ANY PORTION OF THE WORK  
 THE OWNER OR HIS AUTHORIZED REPRESENTATIVE SHALL FURNISH THE COUNTY ENGINEER WITH GRADE SHEETS AND STATIONS OF ALL HOUSE CONNECTIONS AND Y BRANCHES AND SHALL PROVIDE STAKES FOR THEM AT THEIR PROPER LOCATIONS WITH STATIONING PLAINLY MARKED  
 ANY CHANGE OF LOCATION SHALL BE REQUESTED IN WRITING BY THE OWNER OR HIS REPRESENTATIVE

1  
 PROFILE ALIGNMENT AND GRADE OF  
**SANITARY SEWERS**  
 TO BE CONSTRUCTED IN  
**LINDSEY AVE.**  
 IN TRACT NO. 15026, M.B. 316-G  
**SANITARY SEWER RIGHT OF WAY**  
 IN LOT 4, RIVER BLOCK, NR 23-34, BETWEEN LINDSEY AVE. AND LOCH ALENE AVE.  
**LOCH ALENE AVE.**  
 BETWEEN TRACT NO. 14841, M.B. 310-21-22 AND BALFOUR ST.  
**BONNIE VALLE AVE.**  
 BETWEEN HOMEBROOK ST. AND BALFOUR ST.  
**HOMEBROOK ST.**  
 BETWEEN LOCH ALENE AVE. AND WEST BOUNDARY OF TRACT NO. 14489  
**PRIVATE CONTRACT NO. 1270**  
 W. S. 36  
 SHEET 1 OF 2 SHEETS  
 SCALE: VERT. 1" = 10'  
 HORIZ. 1" = 100'  
 FEB. 19, 1950

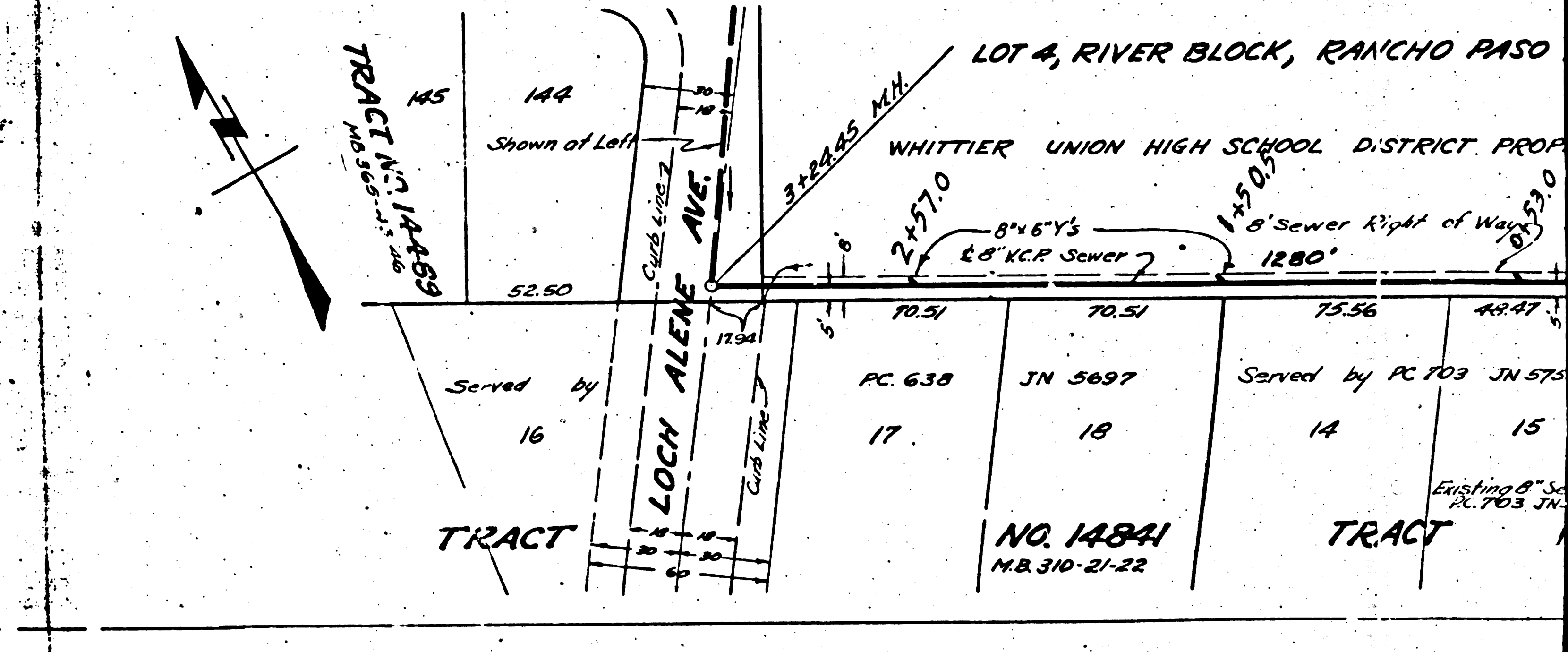
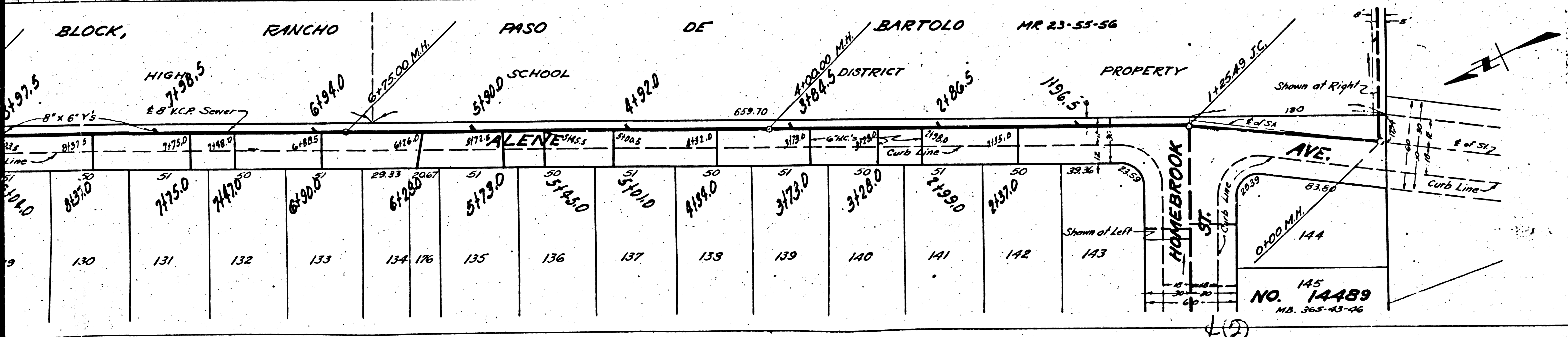
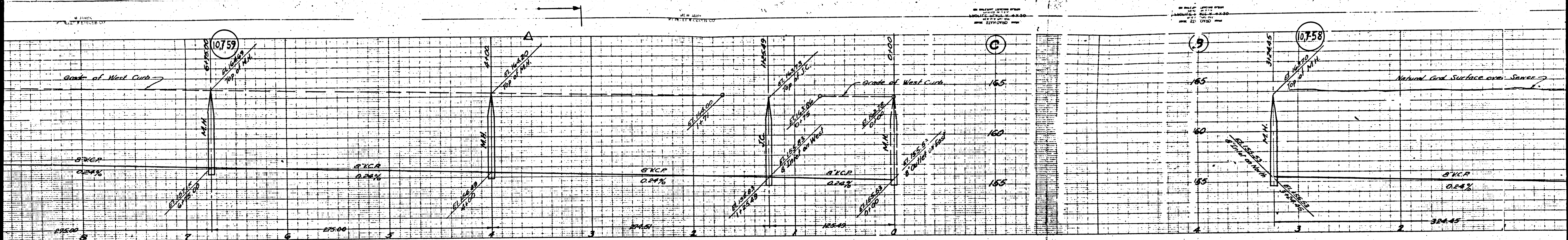
PREPARED IN THE OFFICES OF  
**KEMMERER ENG. CO.**  
 BY *John M. Kemmerer*  
 REG. C. E. NO. 272  
 FOR LEGEND  
 SEE PLAN NO. S-4-54

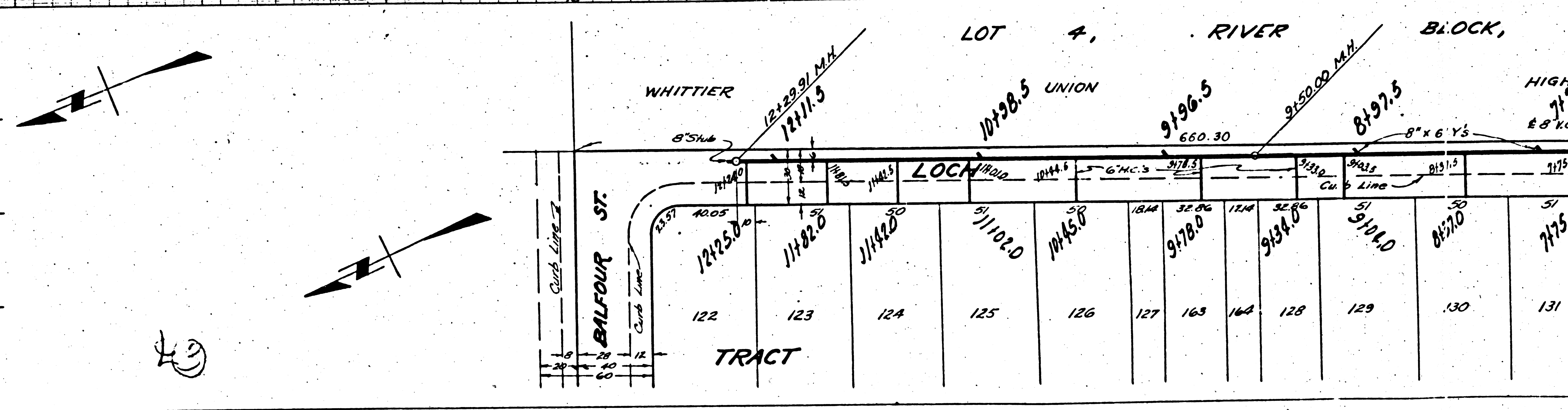
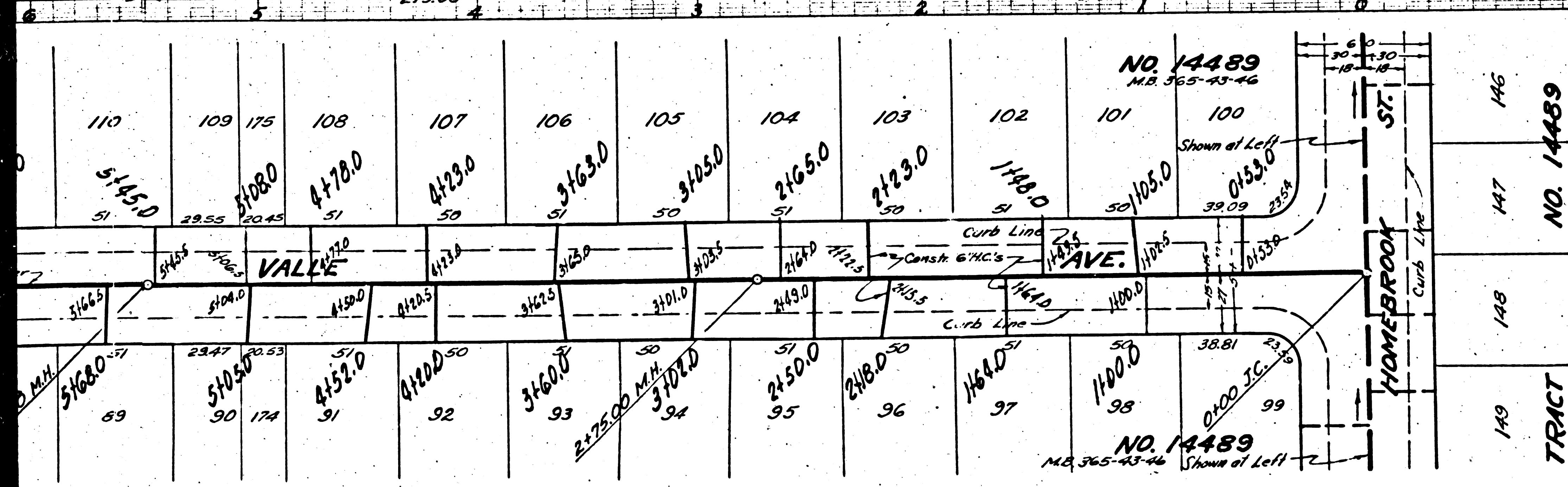
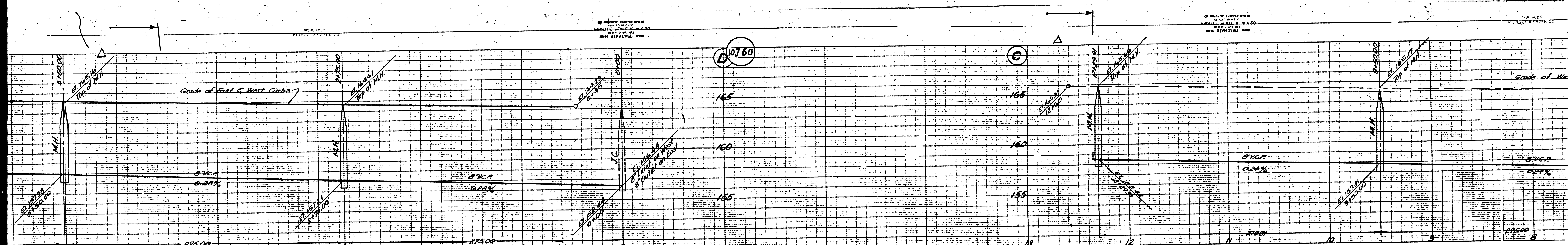
NOTE  
 GRADES TO WHICH THIS IMPROVEMENT IS TO BE CONSTRUCTED ARE SHOWN ON PLANS AND PROFILES  
 GRADE POINTS FOR TOP OF CURB, CENTER LINE OF STREET OR CENTER LINE OF ALLEY ARE SHOWN BY  
 CIRCLES ON PROFILES AT ALL POINTS BETWEEN DESIGNATED POINTS THE GRADE SHALL BE ESTABLISHED  
 TO AS TO CONFORM TO A STRAIGHT LINE DRAWN BETWEEN SAID DESIGNATED POINTS  
 ELEVATIONS ARE IN FEET ABOVE U. S. G. S. DATUM OR MEAN SEA LEVEL  
 THIS DRAWING AND DATA HEREON ARE HEREBY MADE A PART OF THE SPECIFICATION  
 WORK SHALL BE CONSTRUCTED ACCORDING TO SPECIFICATIONS ON FILE IN THE OFFICE OF THE  
 COUNTY ENGINEER AND SHALL BE PROSECUTED ONLY IN THE PRESENCE OF THE COUNTY ENGINEER  
 BEFORE WORK CAN BE STARTED, THE CONTRACTOR MUST OBTAIN A PERMIT TO EXCAVATE IN  
 COUNTY STREETS FROM THE U. S. COUNTY ROAD DEPT., 311 SO. MAIN ST., LOS ANGELES, MAKE A DEPOSIT  
 WITH THE COUNTY ENGINEER, ROOM 836 AT 105 WIND STREET, SUFFICIENT TO COVER THE COST OF  
 CONSTRUCTION INSPECTION AND RECORD PLANS  
 IF WORK IS TO BE DONE IN A STATE HIGHWAY, A PERMIT MUST BE OBTAINED FROM THE STATE  
 OF CALIFORNIA, DIVISION OF HIGHWAYS, 800 STATE BUILDING, AFTER MAKING THE DEPOSIT WITH THE  
 COUNTY ENGINEER  
 APPROVAL OF THIS PLAN BY THE COUNTY OF LOS ANGELES DOES NOT CONSTITUTE A  
 REPRESENTATION AS TO THE ACCURACY OF THE LOCATION OF, OR THE EXISTENCE OR  
 NON-EXISTENCE OF, ANY UNDERGROUND UTILITIES, PIPES OR STRUCTURES WITHIN THE  
 LIMITS OF THIS PROJECT. THIS NOTE APPLIES TO ALL SHEETS.

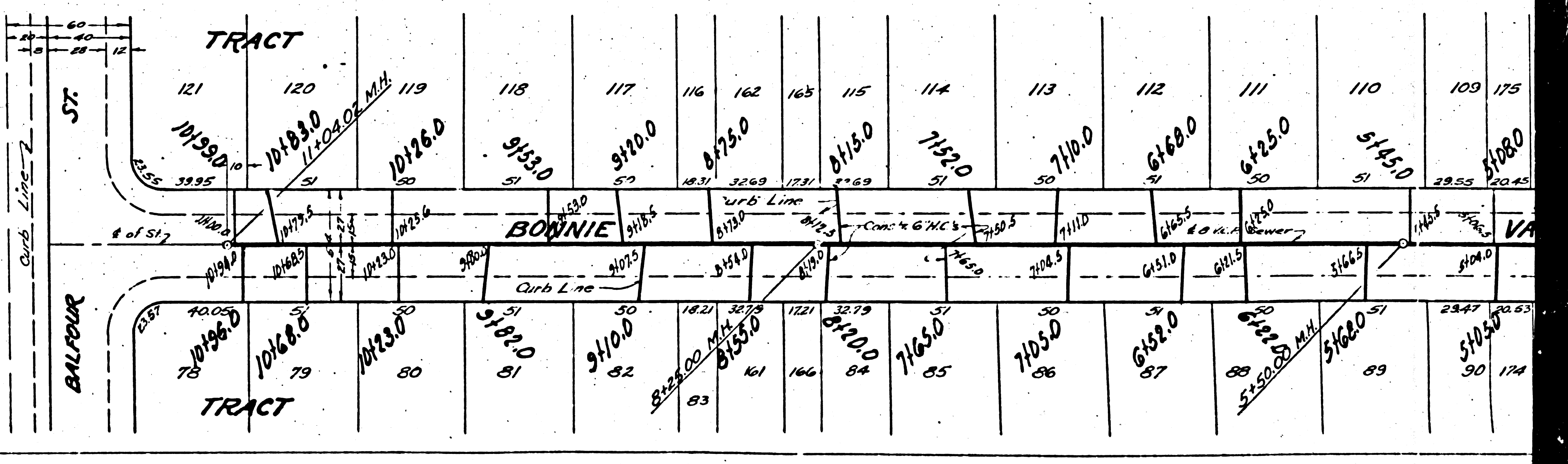
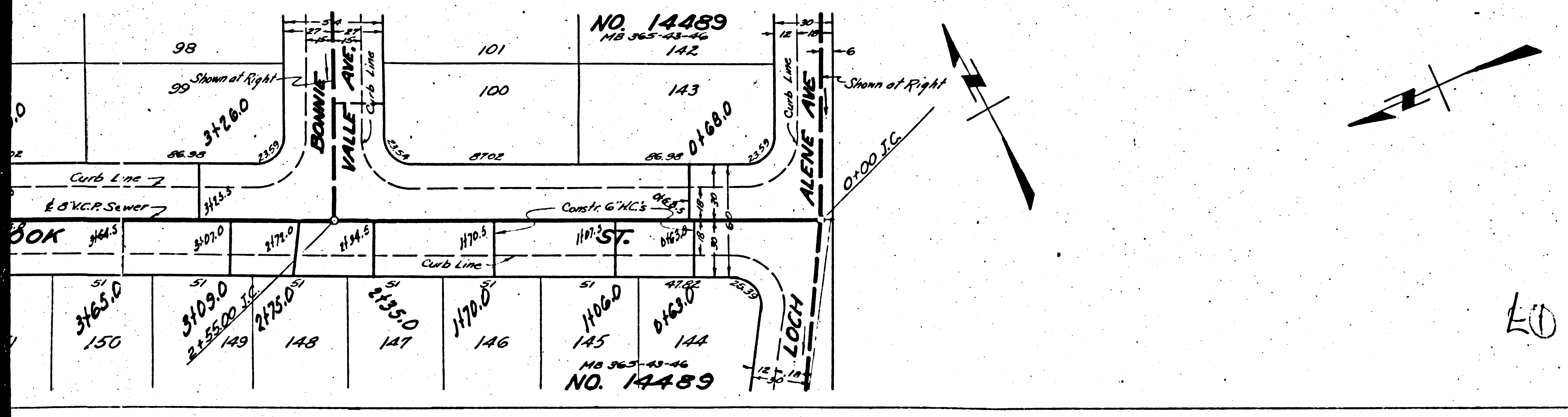
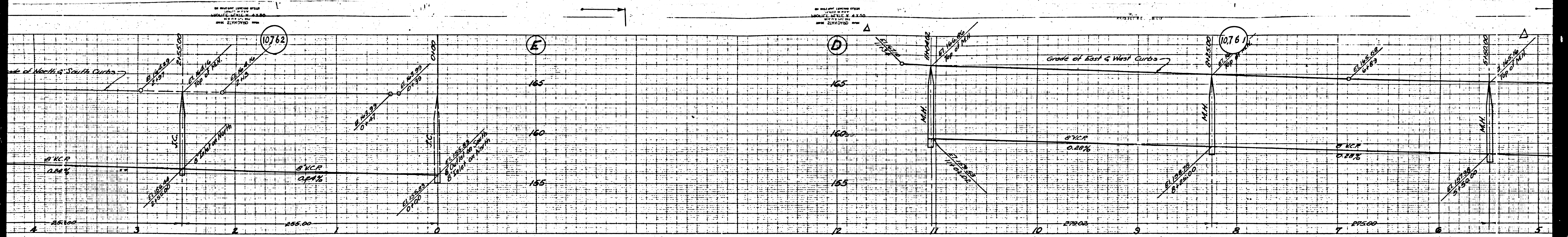
COUNTY OF LOS ANGELES, CALIFORNIA  
 APPROVED *William J. Rutter* COUNTY ENGINEER  
 APPROVED *C. R. Compton* COUNTY ENGINEER

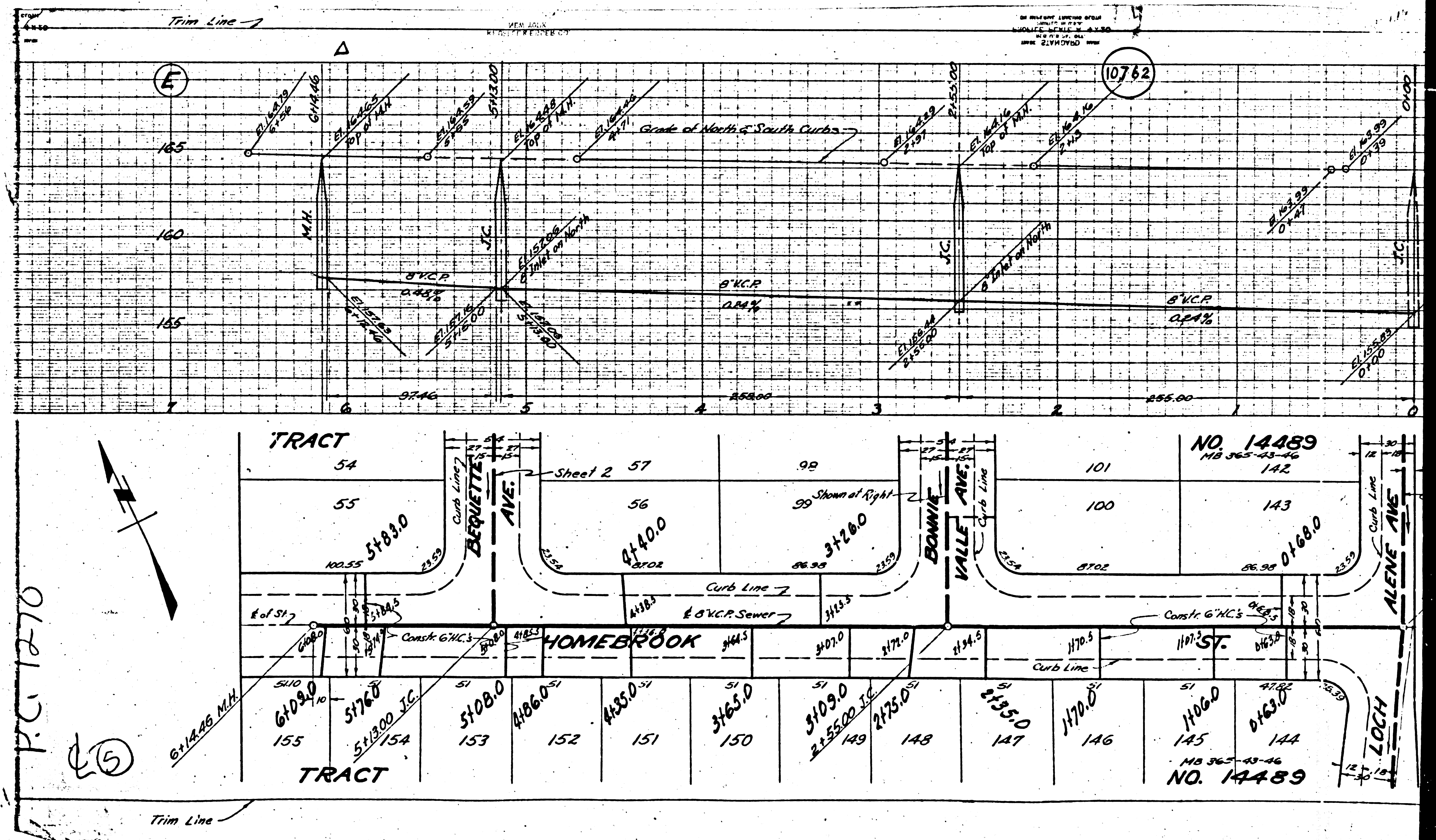


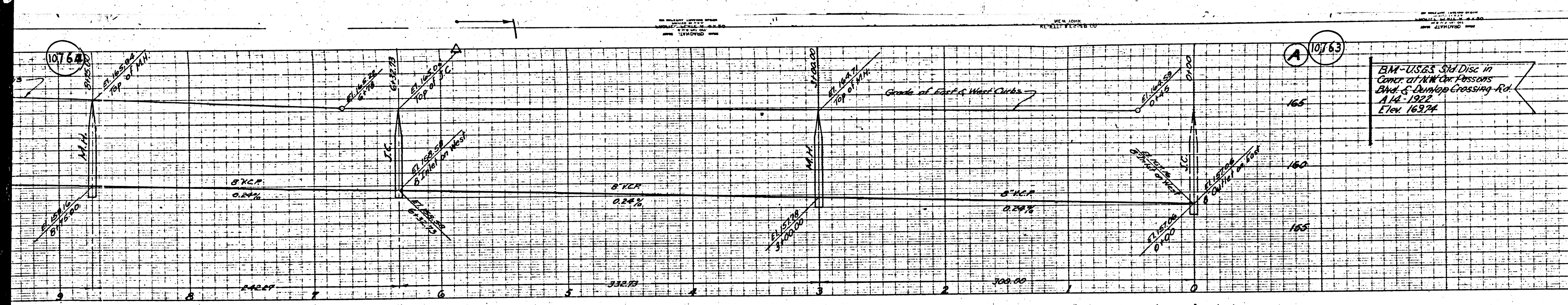
CHECKED BY *John M. Kemmerer* 2/16/50  
 OFFICE OF COUNTY ENGINEER 412 S. E. 11th St. 90012





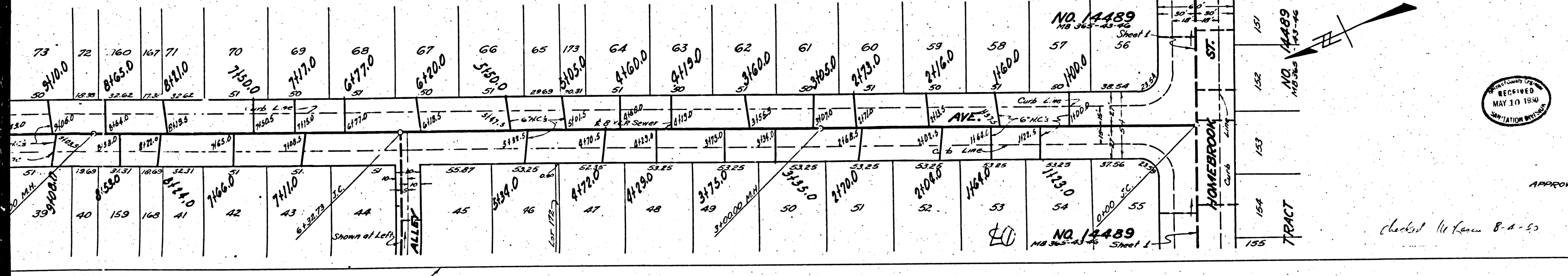






(2)

**PROFILE, ALIGNMENT AND GRADE OF  
SANITARY SEWERS**  
TO BE CONSTRUCTED IN  
**BEQUETTE AVE.**  
BETWEEN HOMEROOK ST AND BALFOUR ST  
**ALLEY**  
BETWEEN BEQUETTE AVE AND ROSEMEAD BLVD  
**LINDELL AVE.**  
BETWEEN SR BOUNDARY OF TRACT NO. 14489 AND BALFOUR ST  
**ROSEMEAD BLVD.**  
BETWEEN ALLEY AND BALFOUR ST  
**PRIVATE CONTRACT NO. 1270**  
WS-36  
SHEET 2 OF 2 SHEETS  
FEB. 1950



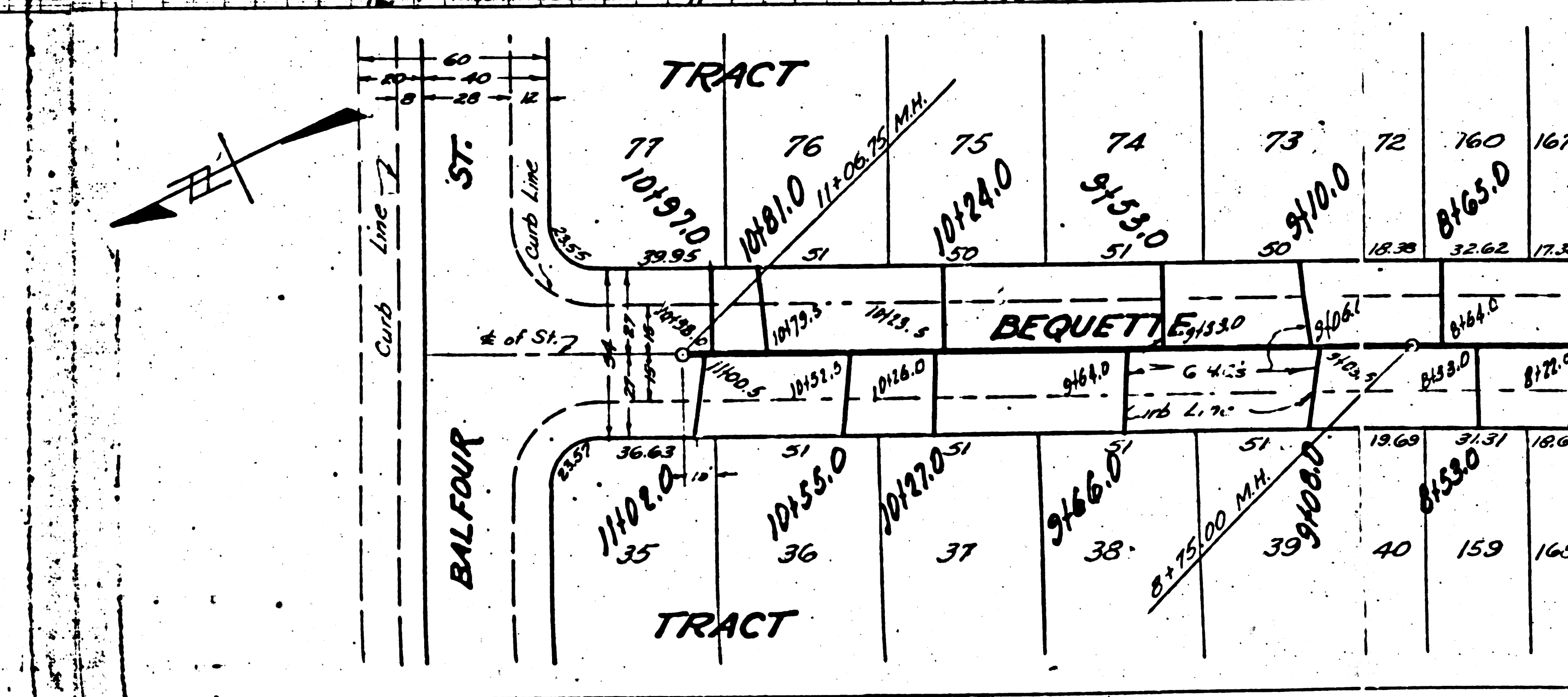
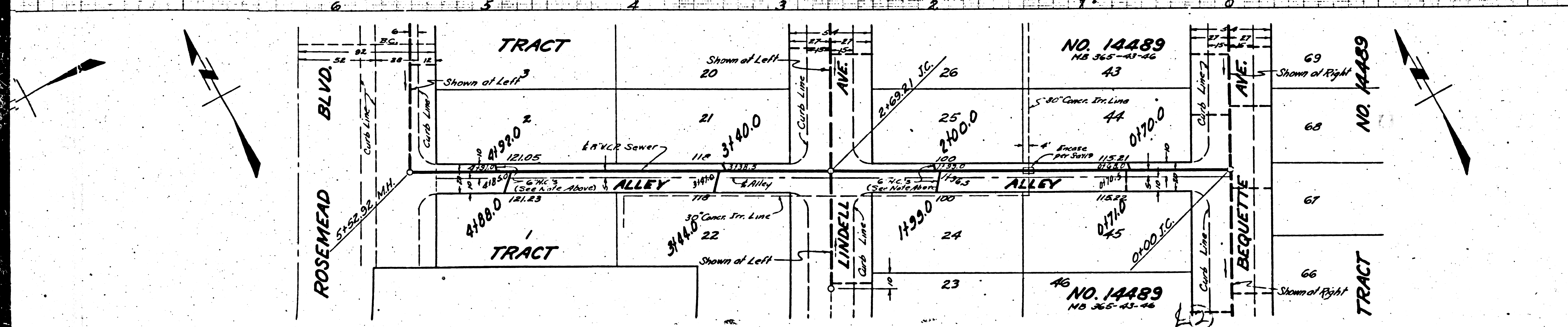
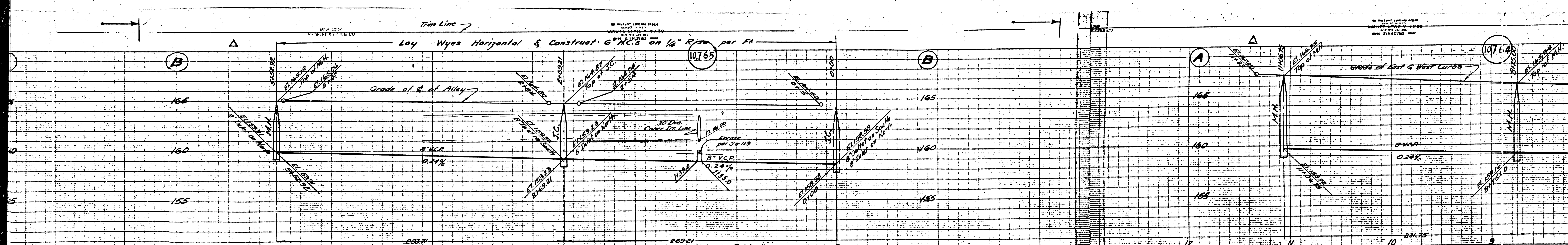
By *John W. Kemmerer*  
Reg. C.E. No. 872

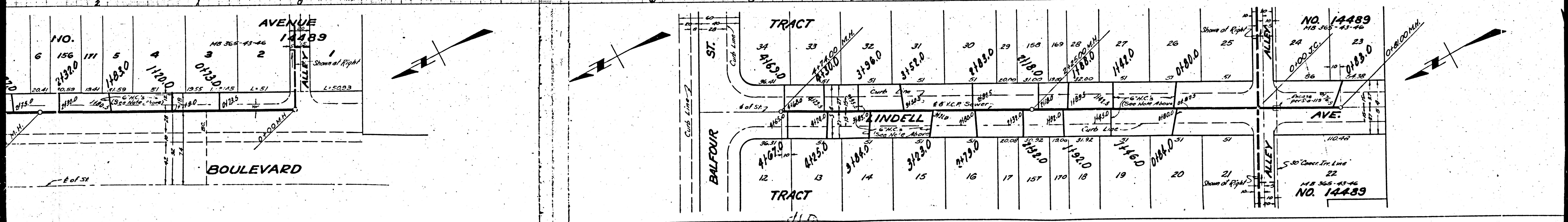
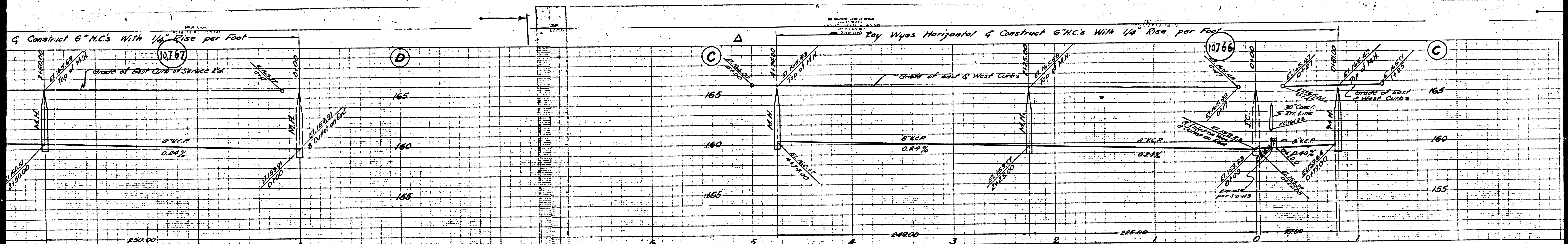
FOR LEGEND SEE PLAN NO. 3-64  
FOR CONSTRUCTION NOTE SEE SHEET 1

COUNTY OF LOS ANGELES, CALIFORNIA

APPROVED *[Signature]* COUNTY ENGINEER  
APPROVED *[Signature]* DIST. CHIEF ENGINEER OF COUNTY SANITATION DISTRICT NO. 6

CHECKED BY *[Signature]* DIST. CHIEF ENGINEER, REG. C.E. NO. 1124





NO. 14489  
 NB 365-43-46  
 10767  
 10766  
 11076  
 11075  
 11074  
 11073  
 11072  
 11071  
 11070  
 11069  
 11068  
 11067  
 11066  
 11065  
 11064  
 11063  
 11062  
 11061  
 11060  
 11059  
 11058  
 11057  
 11056  
 11055  
 11054  
 11053  
 11052  
 11051  
 11050  
 11049  
 11048  
 11047  
 11046  
 11045  
 11044  
 11043  
 11042  
 11041  
 11040  
 11039  
 11038  
 11037  
 11036  
 11035  
 11034  
 11033  
 11032  
 11031  
 11030  
 11029  
 11028  
 11027  
 11026  
 11025  
 11024  
 11023  
 11022  
 11021  
 11020  
 11019  
 11018  
 11017  
 11016  
 11015  
 11014  
 11013  
 11012  
 11011  
 11010  
 11009  
 11008  
 11007  
 11006  
 11005  
 11004  
 11003  
 11002  
 11001



