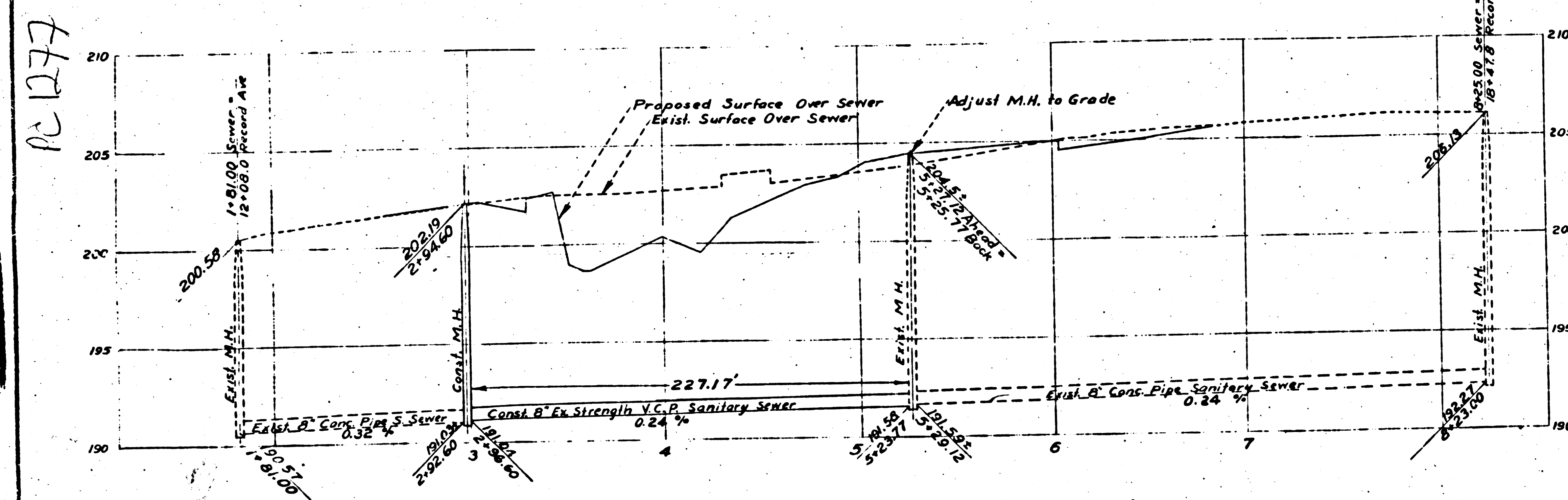
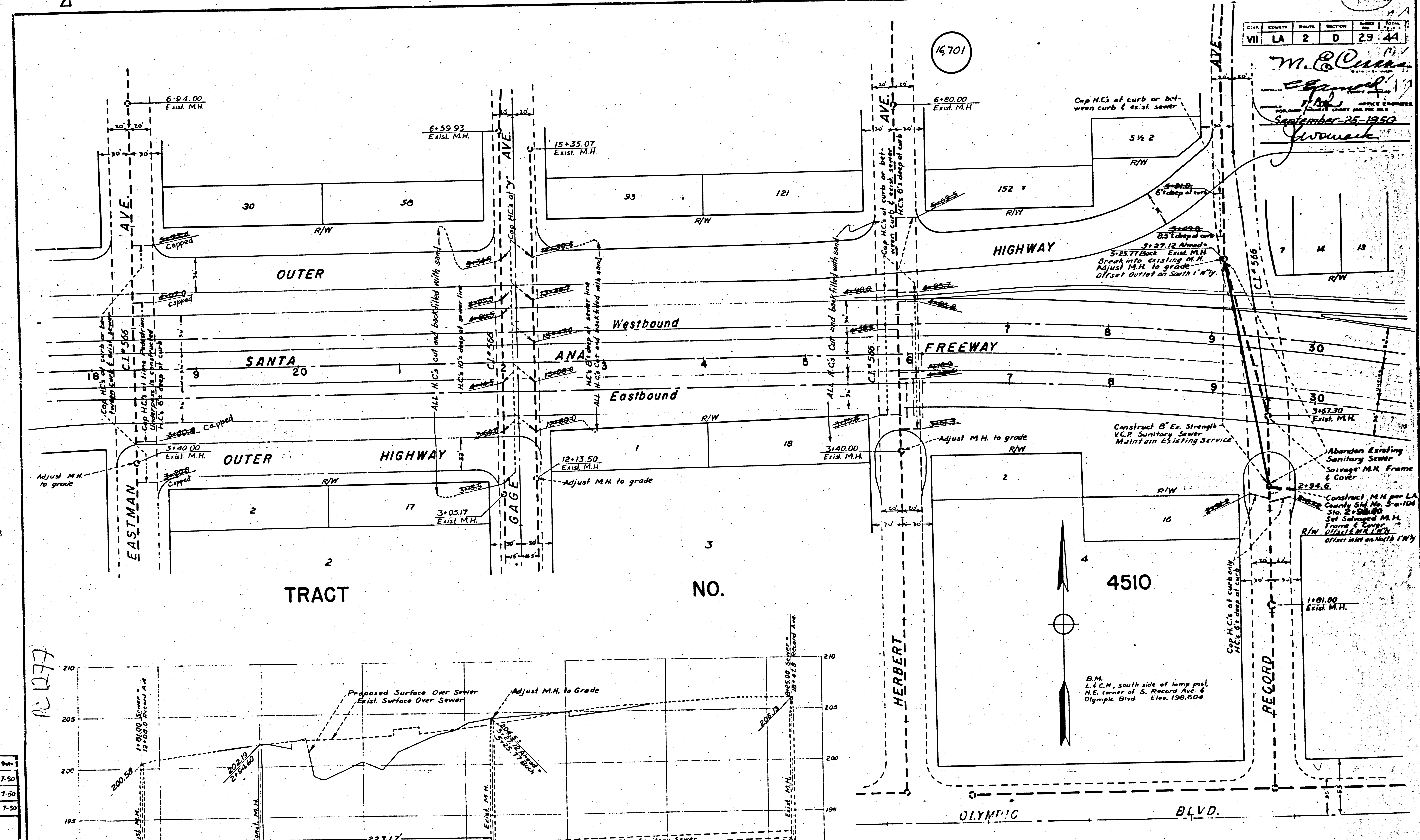


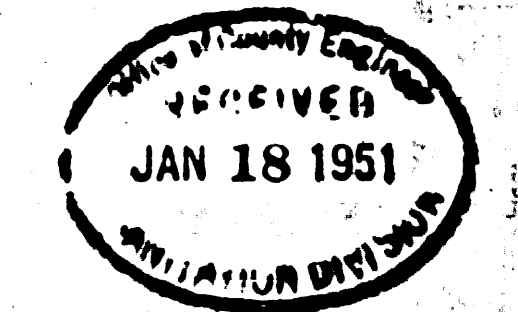
FRA. DIV. NO.	STATE	FEDERAL PROJECT NO.	FISCAL YEAR	SHEET NO.	TOTAL SHEETS
	CALIF.		1950	29	30

CITY COUNTY ROUTE SECTION DIST. TOTAL DIST.
 VII LA 2 D 29 44
 M. B. Collins
 Engineer
 September 25, 1950
 J. W. Winkler



Design Dept.	Initial	Date
Designed	AE	7-50
Traced	AE	7-50
Checked	AE	7-50
Supervised By W.C. Winkler		

Note:
 Deliver surplus M.H. Frames & Covers
 to L.A. County Sewer Maintenance Yard
 1129 E. 59th St.



Checked 7-7-53 M. B. Collins
 P.C. 1277 SANITARY SEWERS

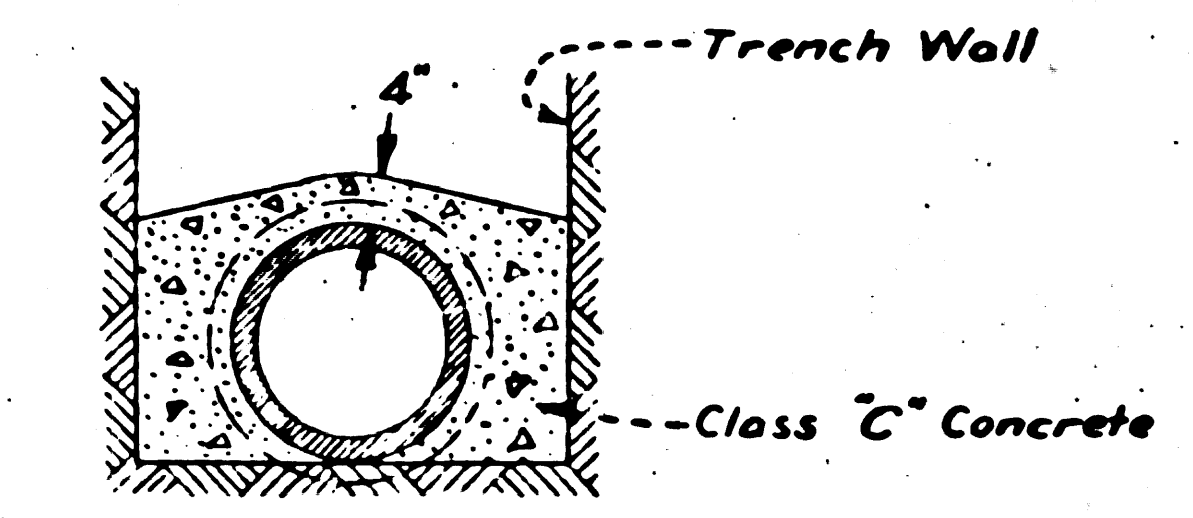
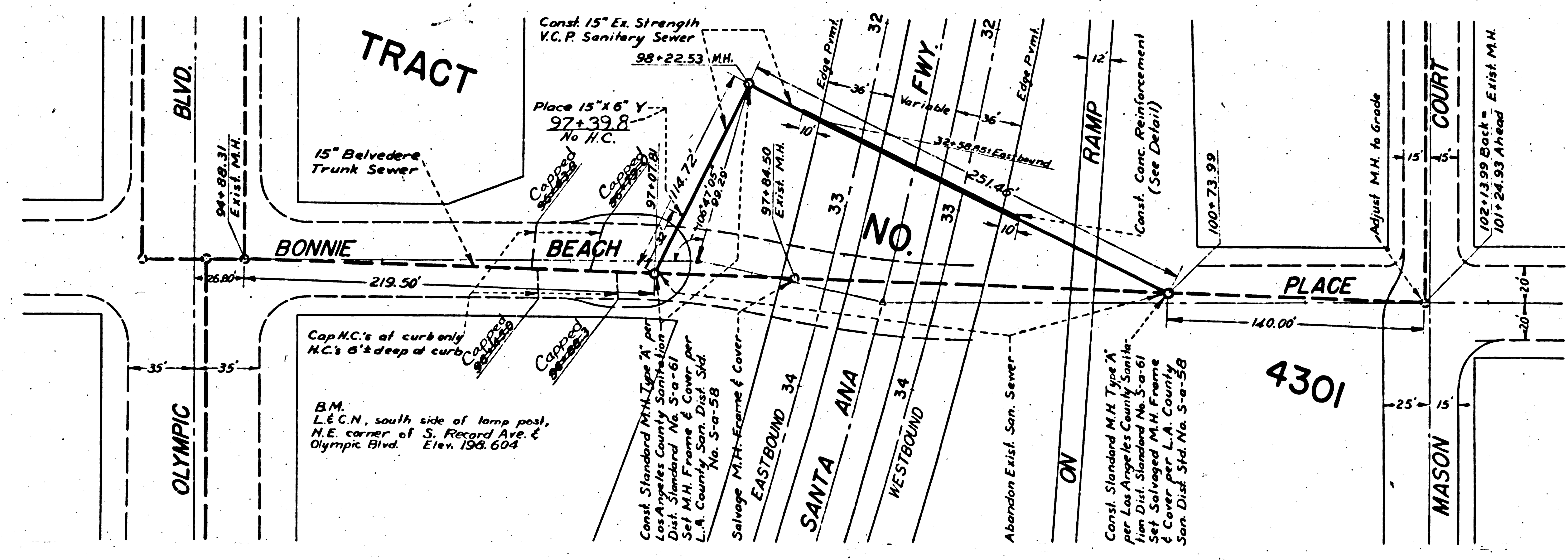
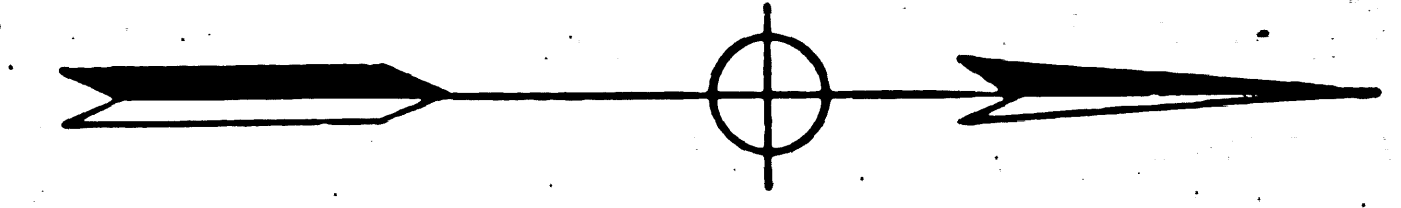
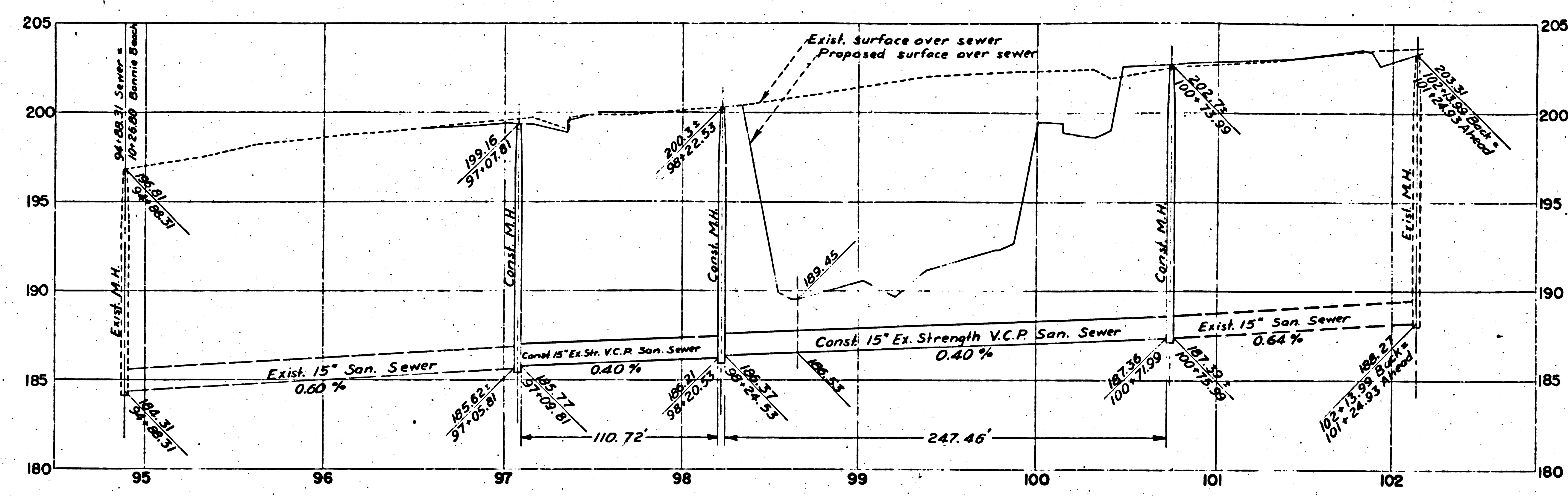
107-19

FED. DIV. NO.	STATE	FEDERAL PROJECT NO.	FISCAL YEAR	SHEET NO.	TOTAL SHEETS
	CALIF.			31	50

DIST.	COUNTY	ROUTE	SECTION	SHEET NO.	TOTAL SHEETS
VII	LA	2	D	31	44

M. C. Quinn
 CIVIL ENGINEER
 APPROVED: *[Signature]*
 PUBLIC WORKS ENGINEER
 COUNTY OF LOS ANGELES
 September 25, 1950
[Signature]

16,703

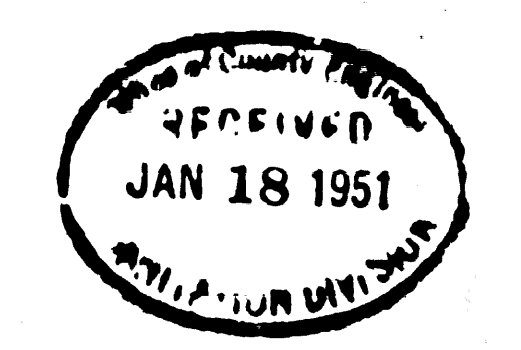


PIPE REINFORCEMENT
 SCALE 1/2" = 1'

SCALE: HORIZ. 1" = 50' VERT. 1" = 5'

P.C. 1277

Design Dept.	AE	7-50
Designed	AE	7-50
Traced	AE	7-50
Checked	AE	7-50
Supervised By	W.C. Winkler	



checked 7-7-53 Winkler

SANITARY SEWERS

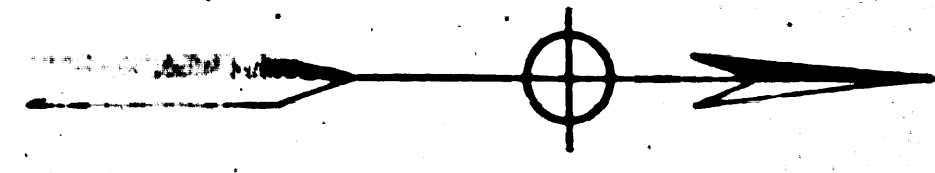
P.C. 1277

31

DIST.	COUNTY	ROUTE	SECTION	SHEET NO.	TOTAL SHEETS
VII	LA	166	A	32	44

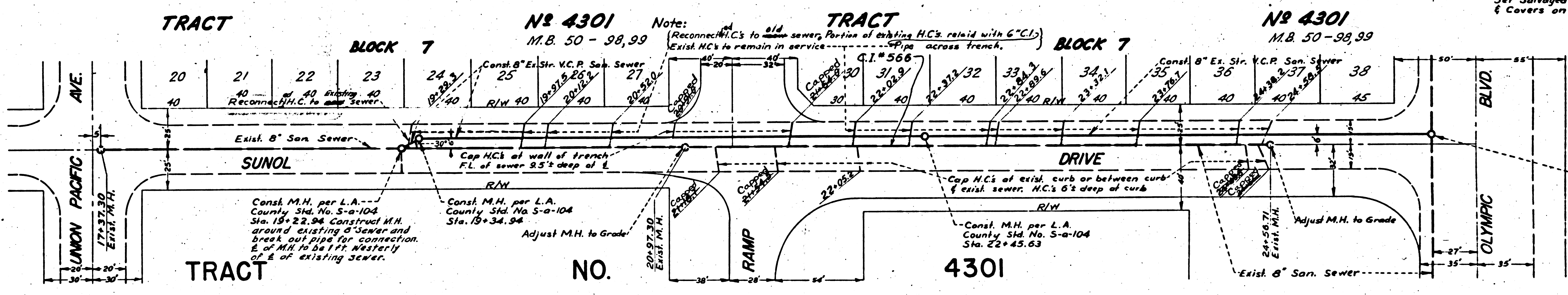
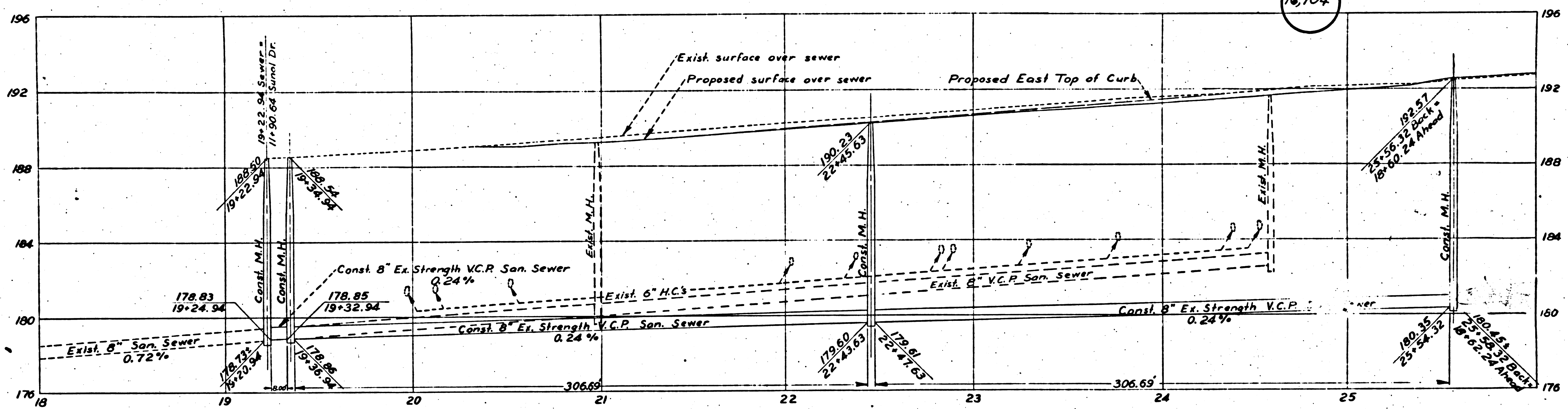
M. Q. Curran
W. C. Winkler
 September 25 1950
J. W. ...

B.M.
 L.C.M., P.E. at B.C.P. N.E. corner
 Triggs St. & S. Sunol Dr.
 Elev. 101.843



SCALE: Horizontal 1" = 40'
 Vertical 1" = 4'

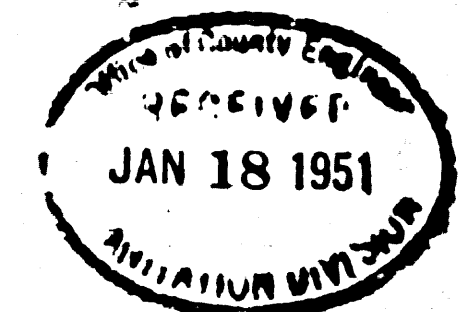
Note:
 Set Salvaged M.H. Frames
 & Covers on All New M.H.'s



PC1277

Design Dept.	Issued	Date
Designed	AE	7-50
Traced	AE	7-50
Checked	AE	7-50
Supervised By W. C. Winkler		

W. C. Winkler
 12-1-50

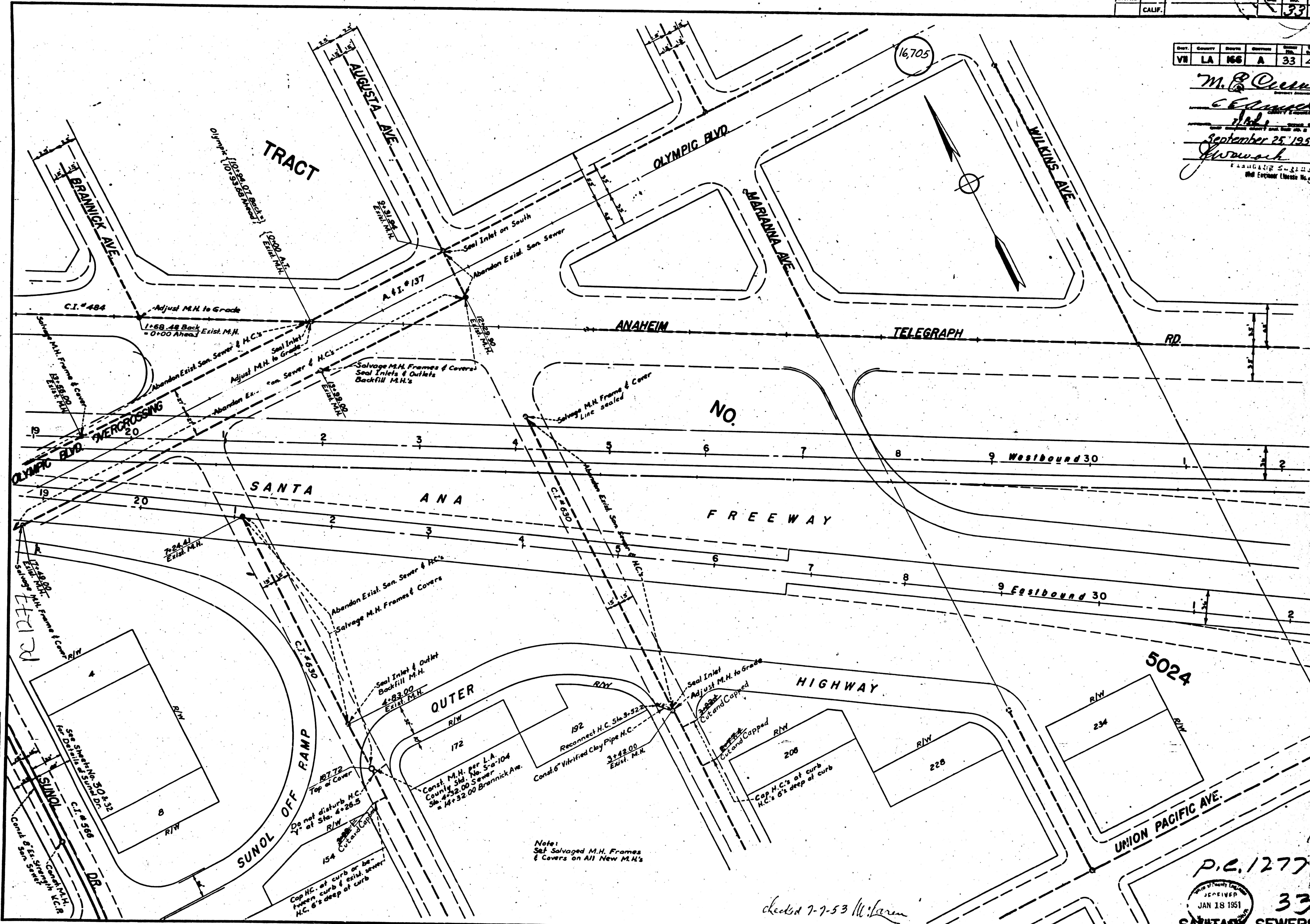


PC1277
 32

Checked 7-7-53 M. Curran SANITARY SEWERS

FED. DIST. NO.	STATE	FEDERAL PROJECT NO.	FISCAL YEAR	TOTAL SHEETS
	CALIF.		33	90

M. P. Quinn
 Engineer
 September 25, 1950
 J. W. Winkler
 Sanitary Engineer License No. 6547



Design Dept.	Issued	Date
Designed	AE	7-50
Traced	AE	7-50
Checked	AE	7-50

Supervised By
W.C. Winkler

Note:
Set Salvaged M.H. Frames & Covers on All New M.H.'s

checked 7-7-53 M. L. Laram

P.C. 1277
 JAN 18 1951
 33
 SANITARY SEWERS

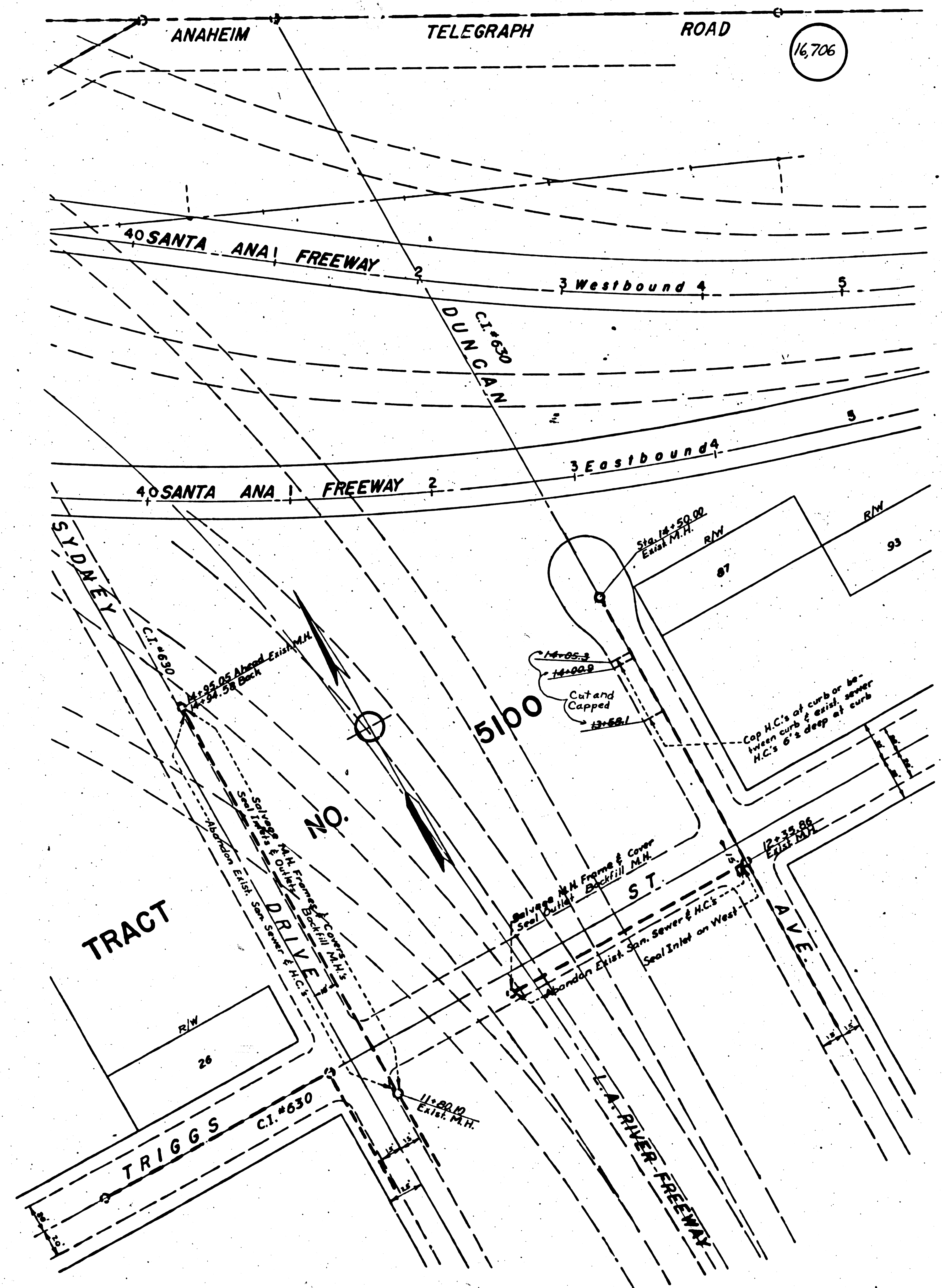
111111

107-19

Dist.	County	Route	Sheet No.	Total Sheets
VII	LA	166	A	34

M. B. Quinn
Quinn
 September 25, 1950
J. W. Mack

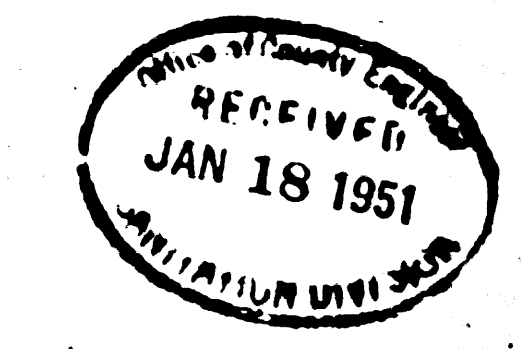
P.C. 1277



Design Dept.	Initial	Date
Designed	AE	7-50
Traced	AE	7-50
Checked	AE	7-50

Supervised By
 W. C. Winkler

W.C.
W.C.
W.C.
W.C.



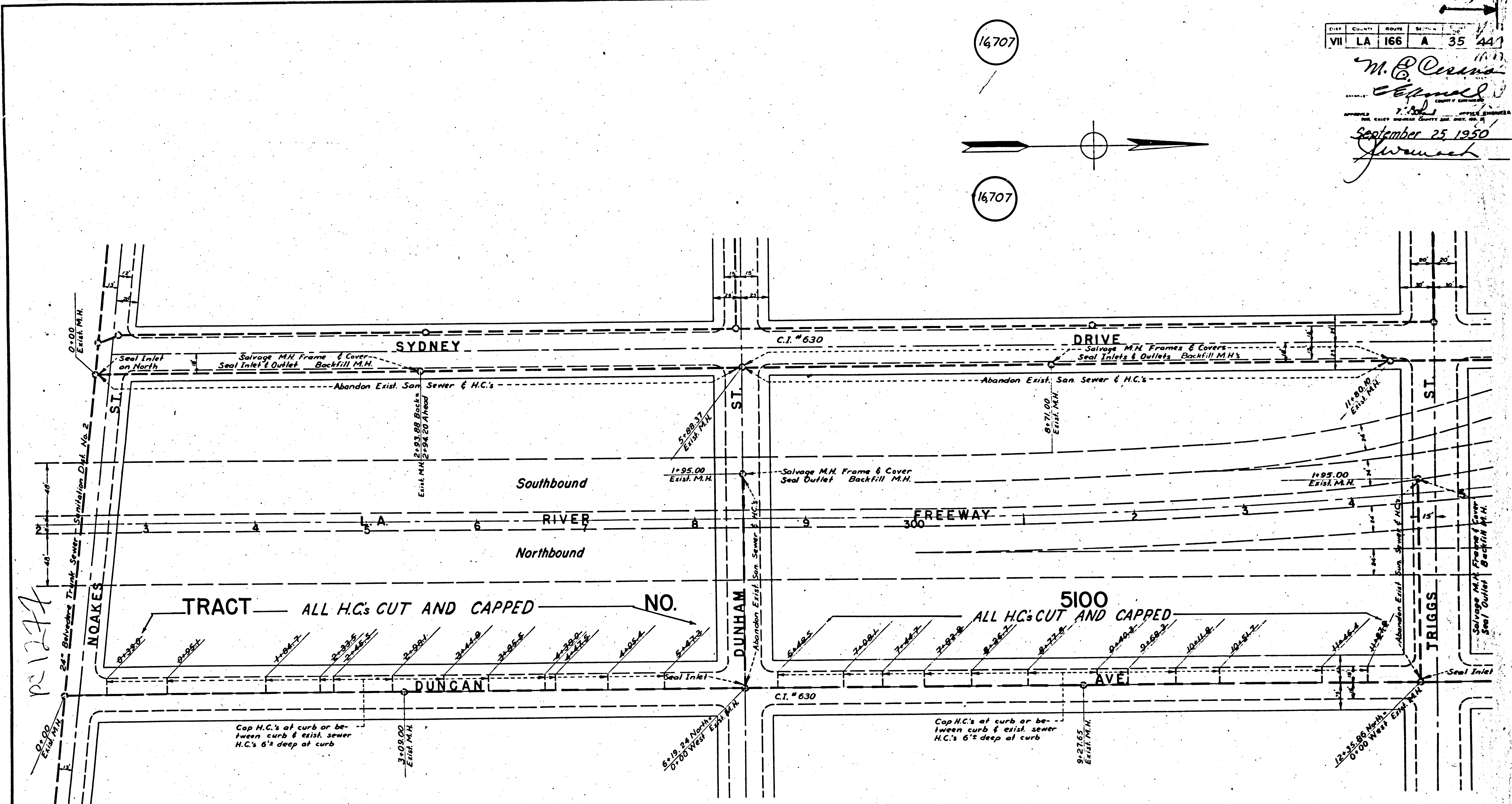
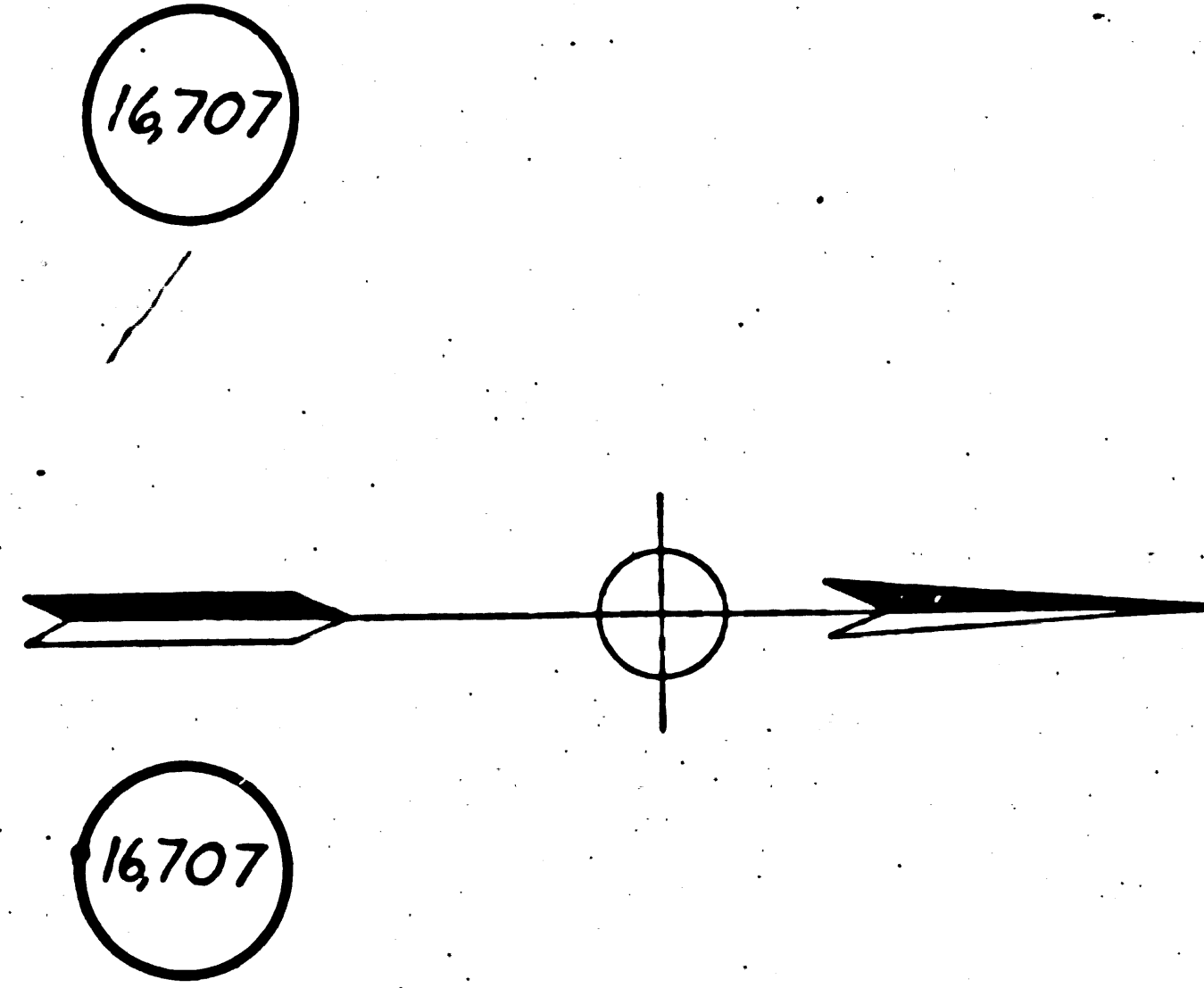
P.C. 1277
 34
 SANITARY SEWERS

checked 7-7-53 M. L. Laren

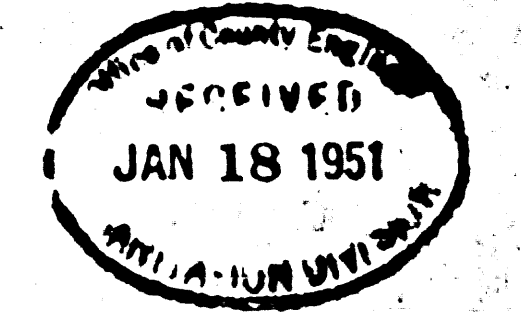
FED. PROJ. NO.	STATE	FEDERAL PROJECT NO.	FISCAL YEAR	SHEET NO.	TOTAL SHEETS
	CALIF.			35	44

CITY	COUNTY	ROUTE	SECTION	SHEET NO.	TOTAL SHEETS
VII	LA	166	A	35	44

M. E. Corona
Engineer
 September 25 1950
J. W. ...



Design Dept.	Initial	Date
Designed	AE	7-50
Traced	AE	7-50
Checked	AE	7-50
Supervised By W.C. Winkler		



PC 12777

35A

checked 7-7-53 W. ... SANITARY SEWERS

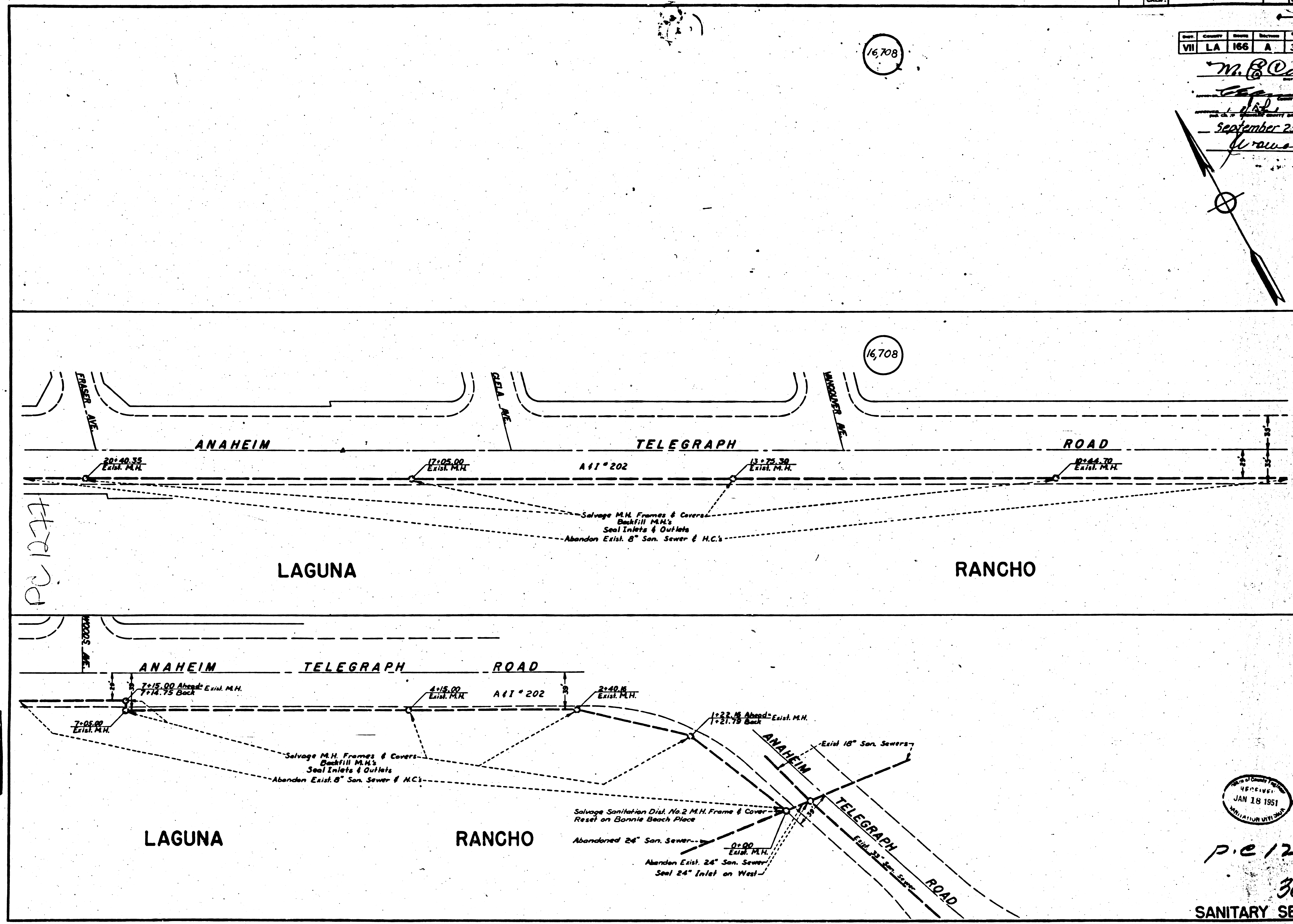
PWA DIST. NO.	STATE	FEDERAL PROJECT NO.	FISCAL YEAR	DATE	TOTAL SHEETS
	CALIF.			36	90

Dist.	County	Sheet	Section	Block	Lot
VII	LA	166	A	36	44

M. B. Quinn
City Engineer
 September 25, 1950
W. C. Winkler

16,708

16,708



P.C. 1277

Design Dept.	Initial	Date
Designed	AE	7-50
Traced	AE	7-50
Checked	AE	7-50

Supervised By
 W. C. Winkler

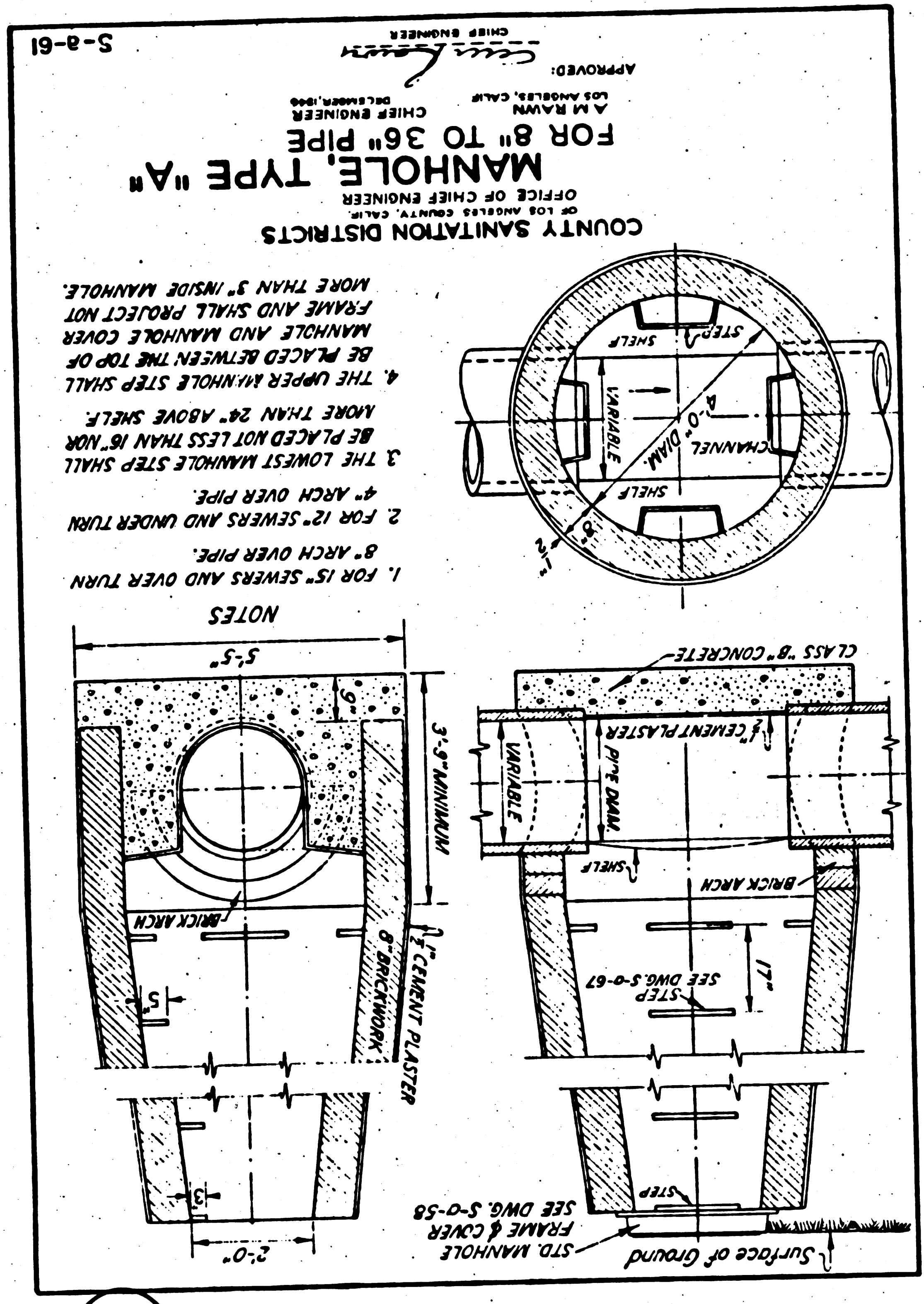
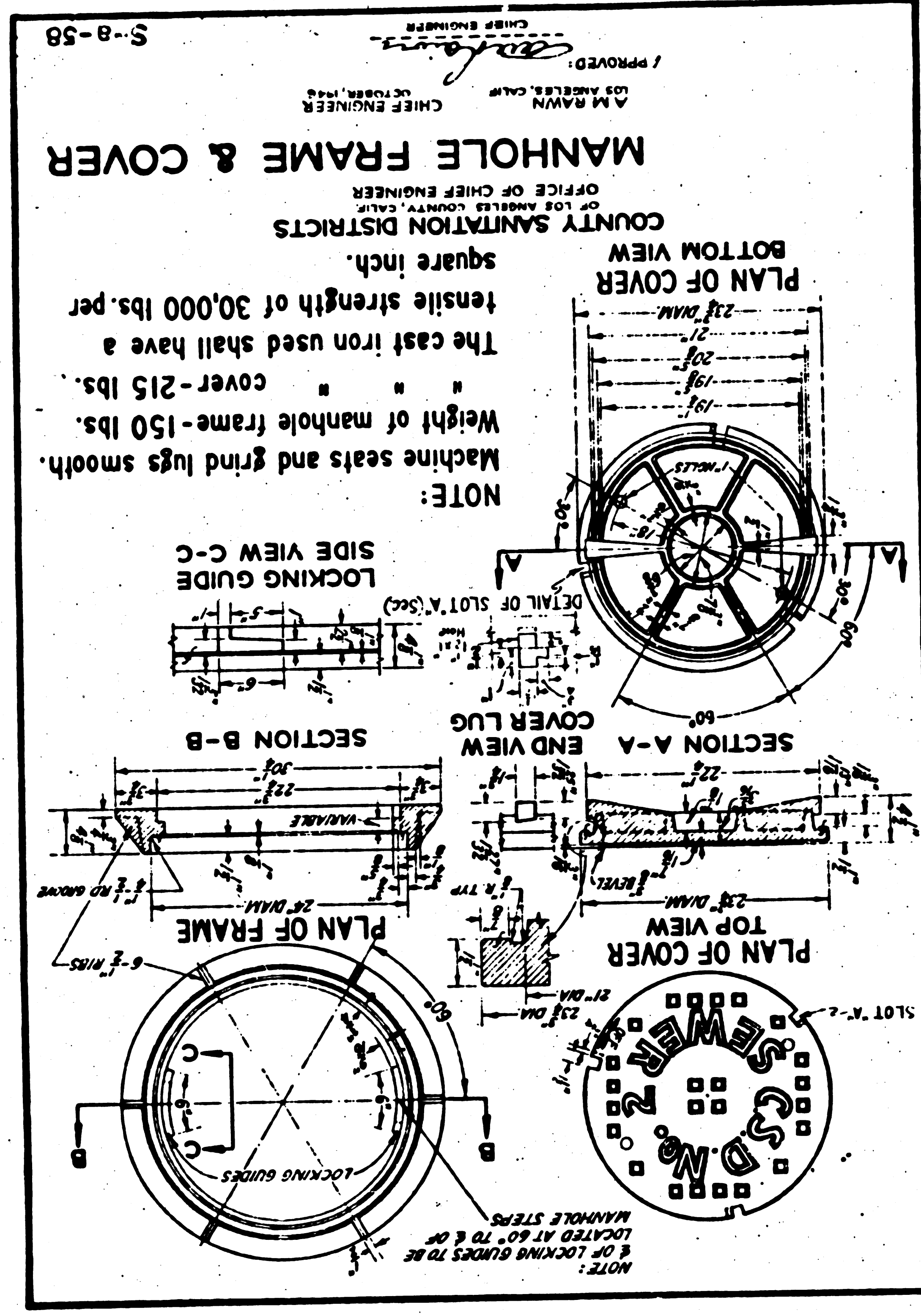
RECEIVED
 JAN 18 1951
 SANITARIAN DIVISION

P.C. 1277
 36
 SANITARY SEWERS

107-19

Design Dept. Date	
Designed AE 6-50	
Traced ER 6-50	
Checked MW 6-50	
Supervised By W. C. Winkler	

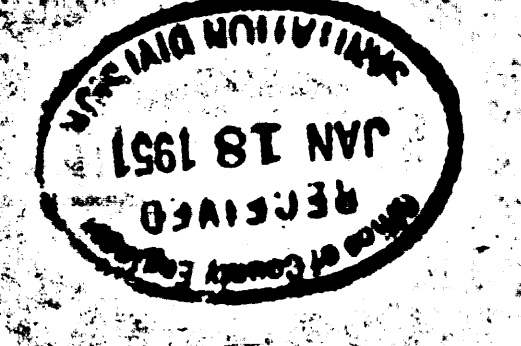
PC 1277



16,709

STRUCTURE DETAIL

PC 1277
37



Approved
September 25 1950
A. M. Rawlin

VII	LA	2	D	37	44
-----	----	---	---	----	----

CALIF.	
STATE	
NO.	
77	90