

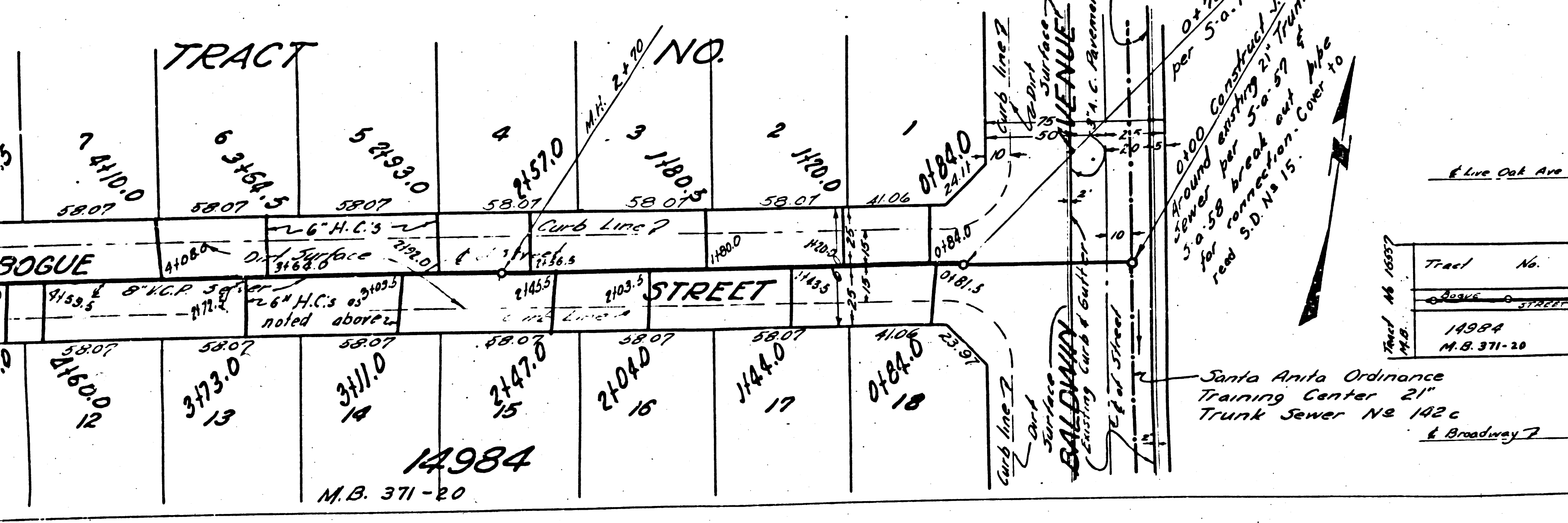
Bench Mark:
 44.62' B.M. 100
 Spike in conc. man. 50' N of E
 of Broadway at the time
 of Tract No. 14984
 Elev. 548.853

**PROFILE ALIGNMENT AND GRADE OF
 SANITARY SEWERS
 TO BE CONSTRUCTED IN
 (A) BOGUE STREET FROM BALDWIN STREET
 TO 534' EAST OF BALDWIN STREET
 IN TRACT NO. 14984, M.B. 371-20**

**PRIVATE CONTRACT NO. 1286
 WS. 44
 SHEET 1 OF 1 SHEET**

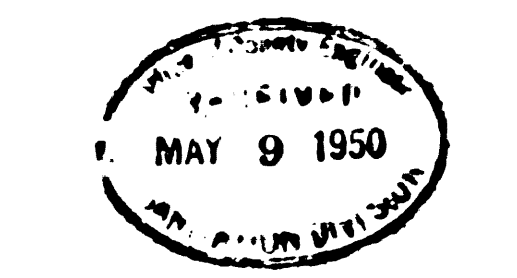
- Note 1. Use standard strength pipe, except as noted.
- Note 2. Use standard manhole frames and covers, 5'-0" I.D.
- Note 3. Use cement mortar for all vitrified clay pipe joints.
- Note 4. Resurface all trench within paved areas to meet A.A. Co. Road Dept. requirements in accordance with the permit.
- Note 5. All structures to be back-sewer structures, 5'-0" I.D.
- Note 6. Construct house connections with invert of property line 5' below curb grade, except as noted.
- Note 7. Erase 2' of sewer at points of interference with poles as per 5'-0" I.D.
- Note 8. Responsibility of the County Engineer will extend as far out any portion of the work. The owner or his authorized representative shall furnish the County Engineer with grade stakes and stations of all house connections and Y branches and shall provide stakes for them at their proper locations with stationing plainly marked. Any change in location shall be requested in writing by the owner, or his authorized agent. No changes shall be made in these plans without approval of the County Engineer.
- Note 9. Approval of this plan by the County of Los Angeles does not constitute a representation as to the accuracy of the location of or the existence or non-existence of any underground utility, pipe, or structure within the limits of this project.
- Note 10. Provide stakes on the property lines or property lines produced at right angles to the sewer line at the center line of each manhole.

- Note 1. The grades to which this improvement is to be constructed are shown on the plans and profiles.
- Note 2. Grade points for top of curb, center line of street, or center line of alley are shown by circles on profiles. At all points between designated points the grade shall be established so as to conform to a straight line drawn between designated points.
- Note 3. Elevations are in feet above U.S.C. datum or mean sea level.
- Note 4. This drawing and the data hereon are hereby made a part of the specifications.
- Note 5. Work shall be constructed according to specifications on file in the office of the County Engineer.
- Note 6. Before work can be started, the contractor must obtain a permit to excavate in County streets from the L.A. Co. Road Dept. 211 So. Main St. and make a deposit with the County Engineer, 628 L.A. Co. Engineering Bldg., sufficient to cover cost of construction, inspection, and record plans.
- Note 7. Work shall be prosecuted only in the presence of the County Engineer.



Index Map
 Scale: 1"=300'
 PC# 1286
 J.N. 3373

PREPARED BY Leon W. Moore R.E. 3157
 APPROVED [Signature]
 COUNTY ENGINEER
 APPROVED [Signature]
 CHIEF ENGINEER OF COUNTY
 SANITATION DISTRICT NO. 15
 CHECKED BY Jesse T. Reardon 4/22/50
 OFFICE OF THE COUNTY
 ENGINEER, REG. CE. NO. 7103



Checked by [Signature] 6-28-50

Trim Line

