

**PROPOSED ALIGNMENT AND GRADE OF
 SANITARY SEWERS
 TO BE CONSTRUCTED IN
 HUDSON AVENUE
 BETWEEN TEMPLE AVE AND SANTO ORO AVE
 GAYLAWN COURT
 BETWEEN TEMPLE AVE AND SANTO ORO AVE
 SANTO ORO AVENUE
 BETWEEN TEMPLE AVE AND HUDSON AVE
 TEMPLE AVENUE
 BETWEEN HUDSON AVE AND GAYLAWN COURT & BETWEEN SANTO ORO AVE & GLENDORA AVE.**

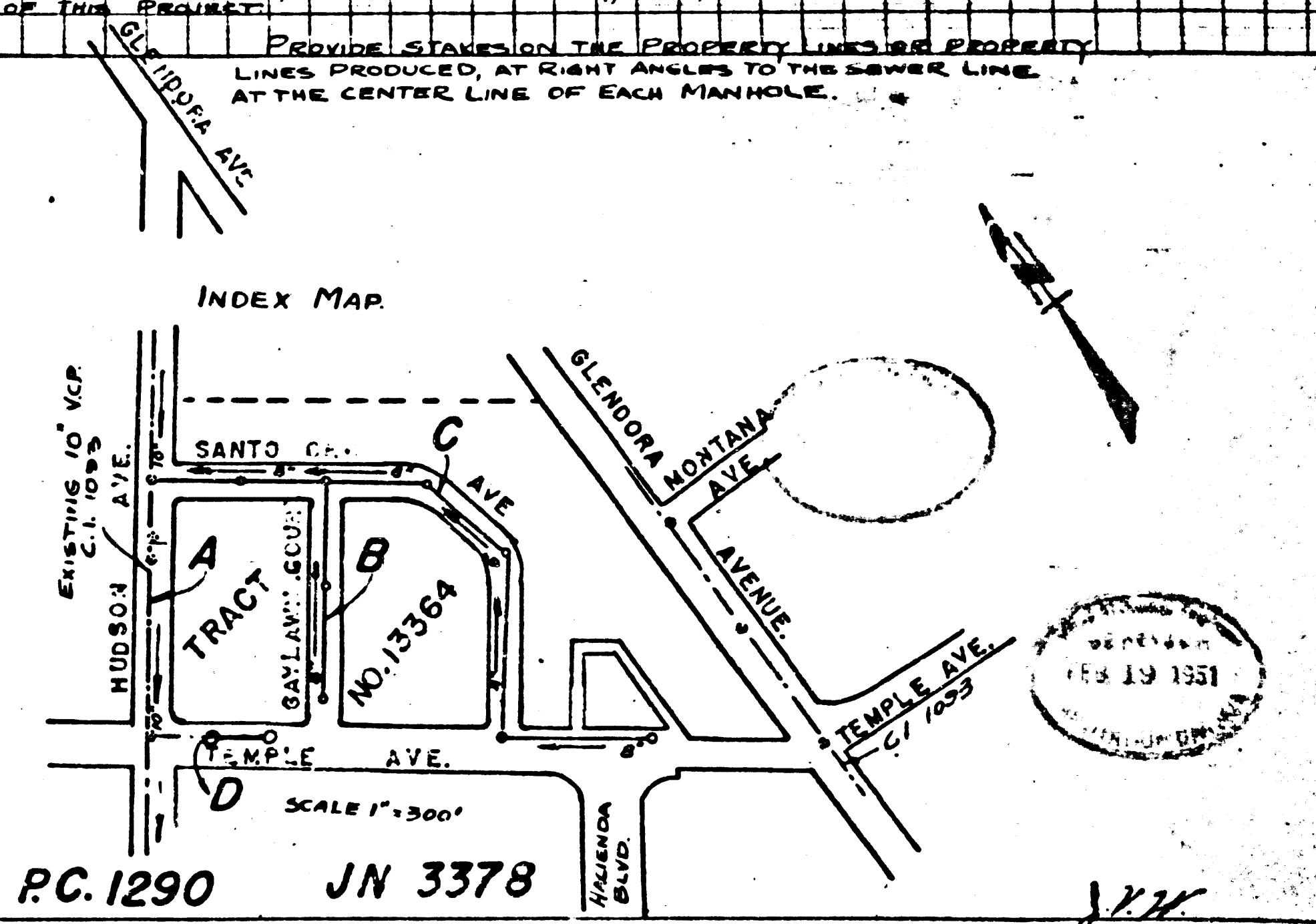
SANITARY SEWER RIGHT OF WAY in Tract No. 13364
 PRIVATE CONTRACT No. 1290 IN 3378 W.S. 38
 SHEET 1 OF 1 SHEET
 VERT. SCALE: 1" = 4'
 HORIZ. SCALE: 1" = 40'
 SEPTEMBER 1950
 PREPARED IN THE OFFICE OF
John O. Reeve
JOHN O. REEVE R.E. 6208

- NOTES:
- (1) USE STANDARD MANHOLE FRAME AND COVER, 45" DIA.
 - (2) USE STANDARD STRENGTH PIPE.
 - (3) USE CEMENT MORTAR FOR ALL VITRIFIED CLAY PIPE JOINTS.
 - (4) RESURFACE PAVED AREAS WITHIN PAVED AREAS TO MATCH IN ACCORDANCE WITH THE EXISTING LOS ANGELES COUNTY ROAD DEPT. SPECIFICATIONS.
 - (5) CONSTRUCT HOUSE CONNECTIONS WITH A LIFT AT PROPERTY LINE 5' FROM BLOW CURB GRADE EXCEPT AS NOTED.
 - (6) ENCASE FOUR FEET OF SEWER AT POINTS OF INTERFERENCE WITH POLES AS PER 312-119.
 - (7) ALL STRUCTURES SHALL BE DEEPER SEWER STRUCTURES (12-2-104)

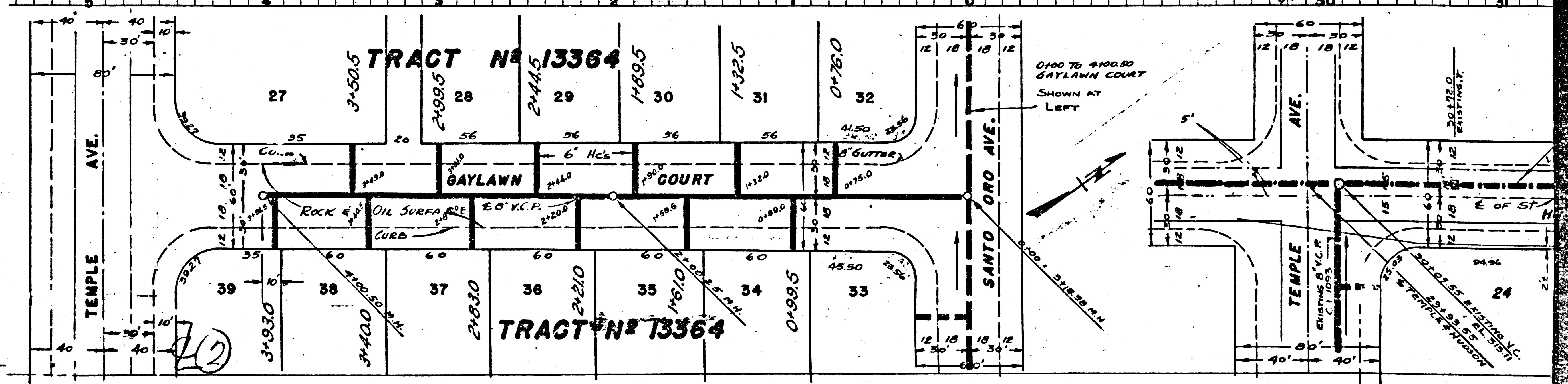
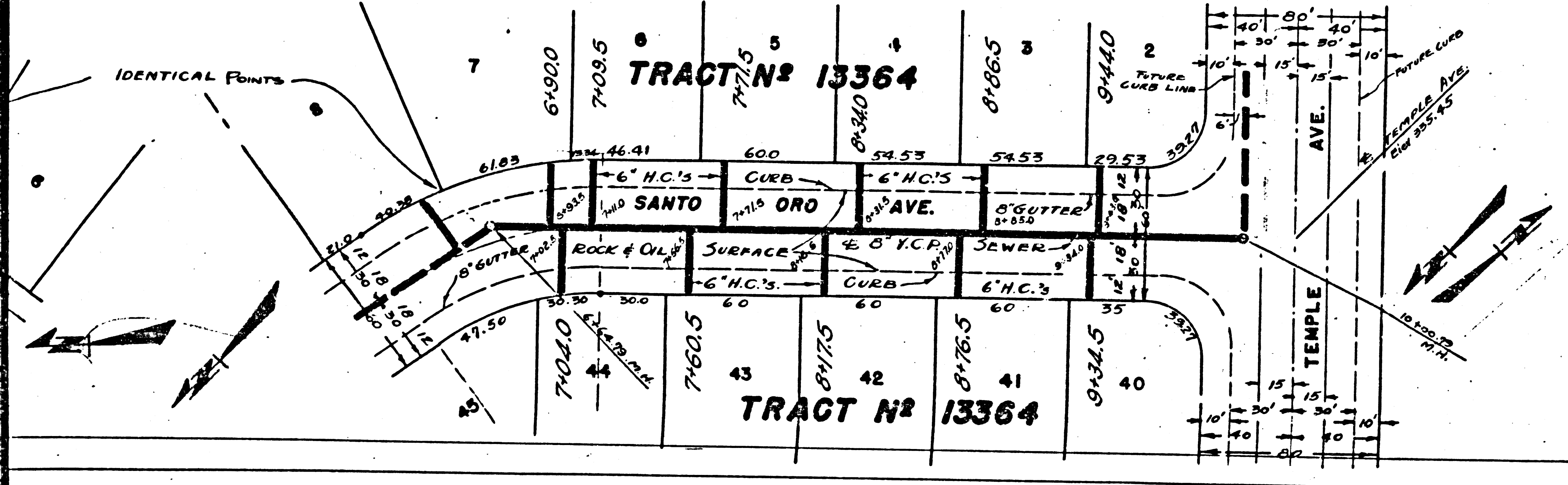
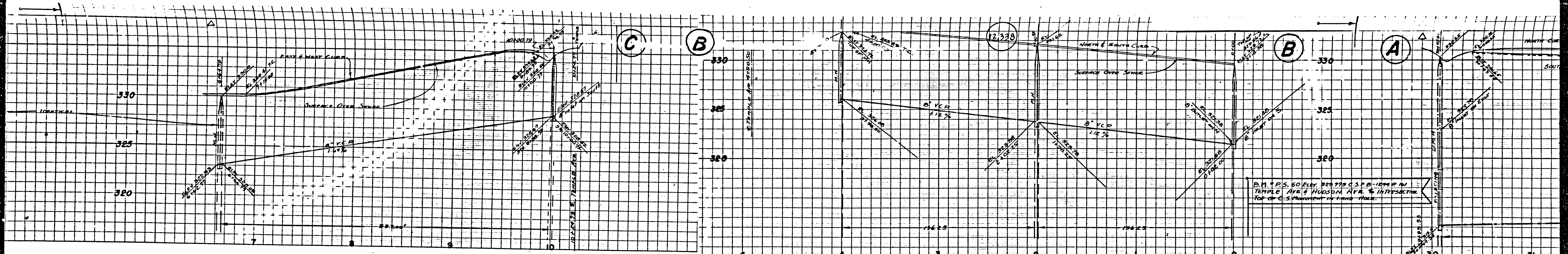
GRADES TO WHICH THIS IMPROVEMENT IS TO BE CONSTRUCTED ARE SHOWN ON PLANS AND PROFILES. GRADE POINTS FOR 10' DIA. MANHOLES AND ENDING OF EACH PIERCE AT 24' POINTS BETWEEN DESIGNATED POINTS. CURB GRADES SHALL BE ESTABLISHED 30' AS TO CONFORM TO A STRAIGHT LINE BETWEEN SAID DESIGNATED POINTS.
 ELEVATIONS ARE IN FEET ABOVE U.S.G.S. DATUM OR MEAN SEA LEVEL. THIS DRAWING AND THE DATA HEREON ARE HEREBY MADE A PART OF THE SPECIFICATIONS.
 WORK SHALL BE CONSTRUCTED ACCORDING TO SPECIFICATIONS ON FILE IN THE OFFICE OF THE COUNTY ENGINEER, AND SHALL BE PROSECUTED ONLY IN THE PRESENCE OF THE COUNTY ENGINEER.
 BEFORE THE WORK CAN BE STARTED, THE CONTRACTOR MUST OBTAIN A PERMIT TO EXCAVATE IN THE COUNTY STREETS FROM THE L.A. COUNTY ROAD DEPT., 211 SO. MAIN ST., AND MAKE A DEPOSIT WITH THE COUNTY ENGINEER, 323, L.A. COUNTY ENGINEER BLDG. SUFFICIENT TO COVER THE COST OF CONSTRUCTION INSPECTION AND RECORD PLANS.

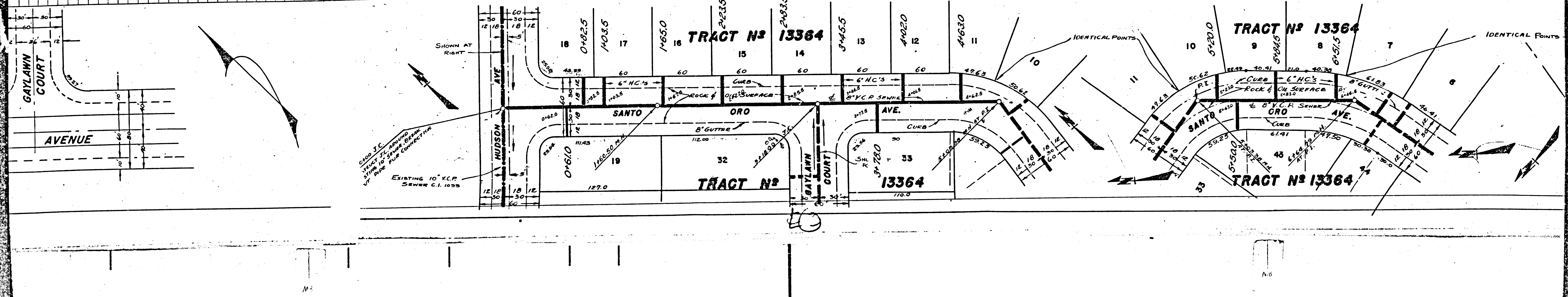
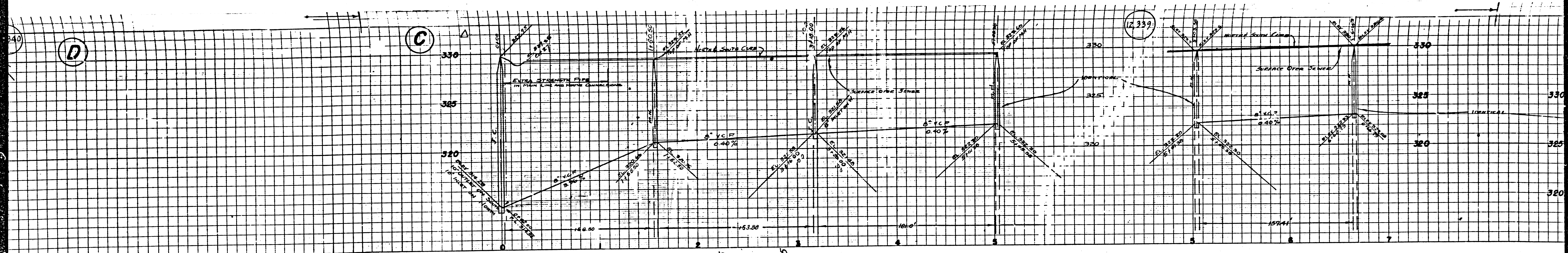
COUNTY OF LOS ANGELES, CALIFORNIA.

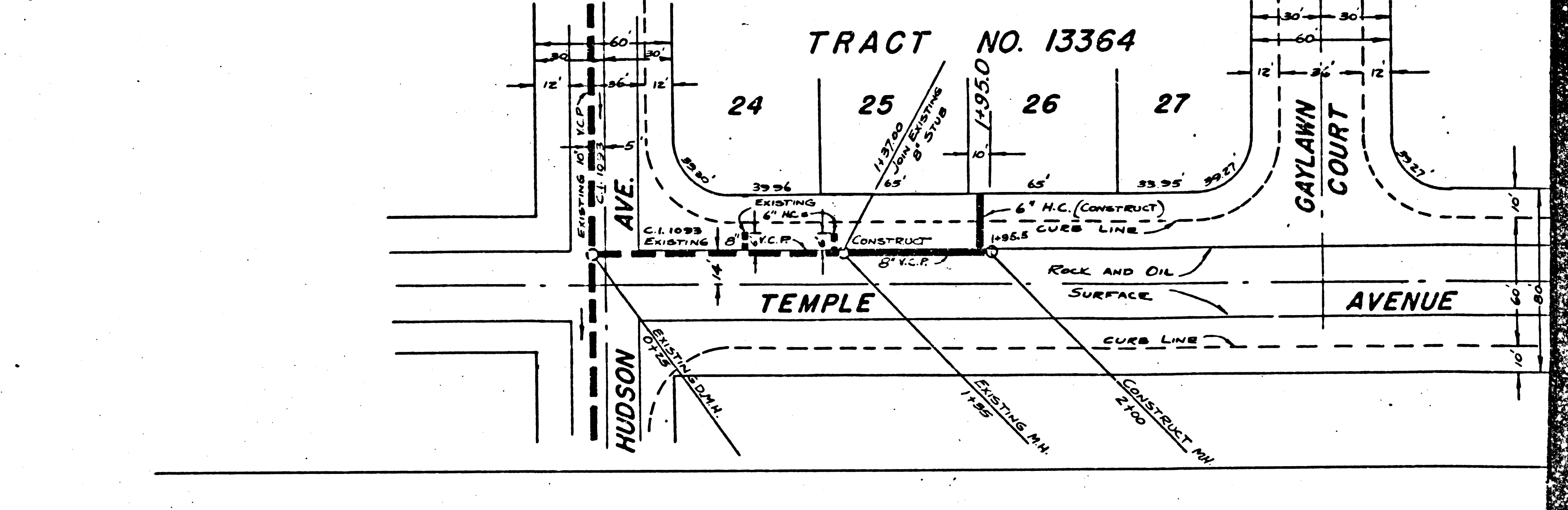
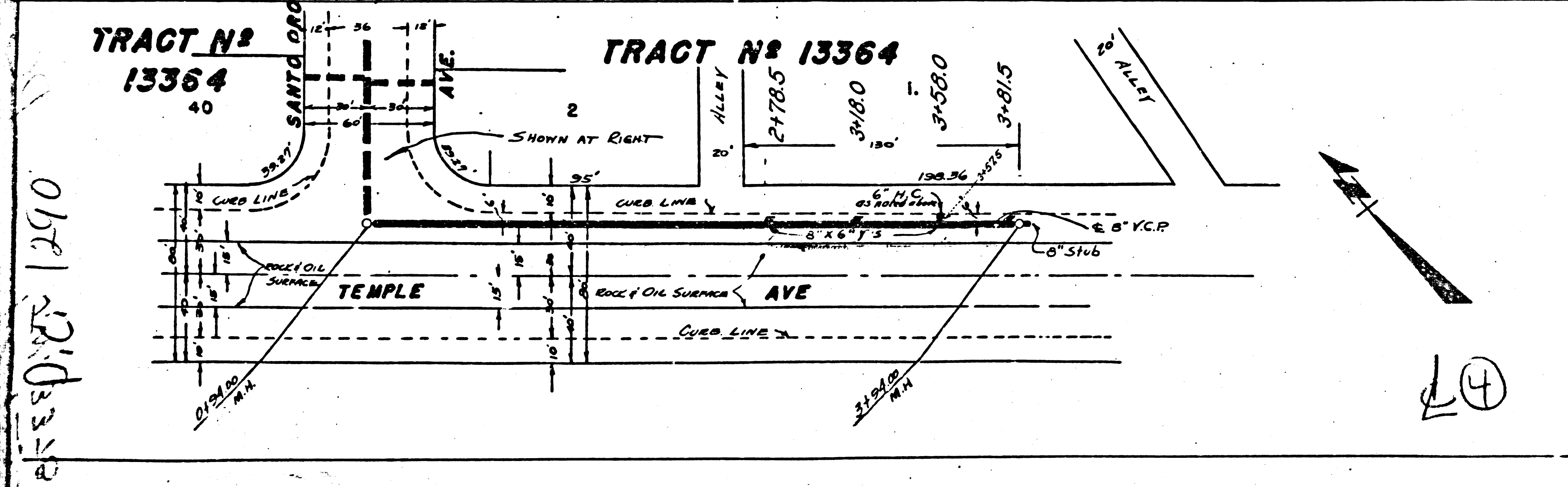
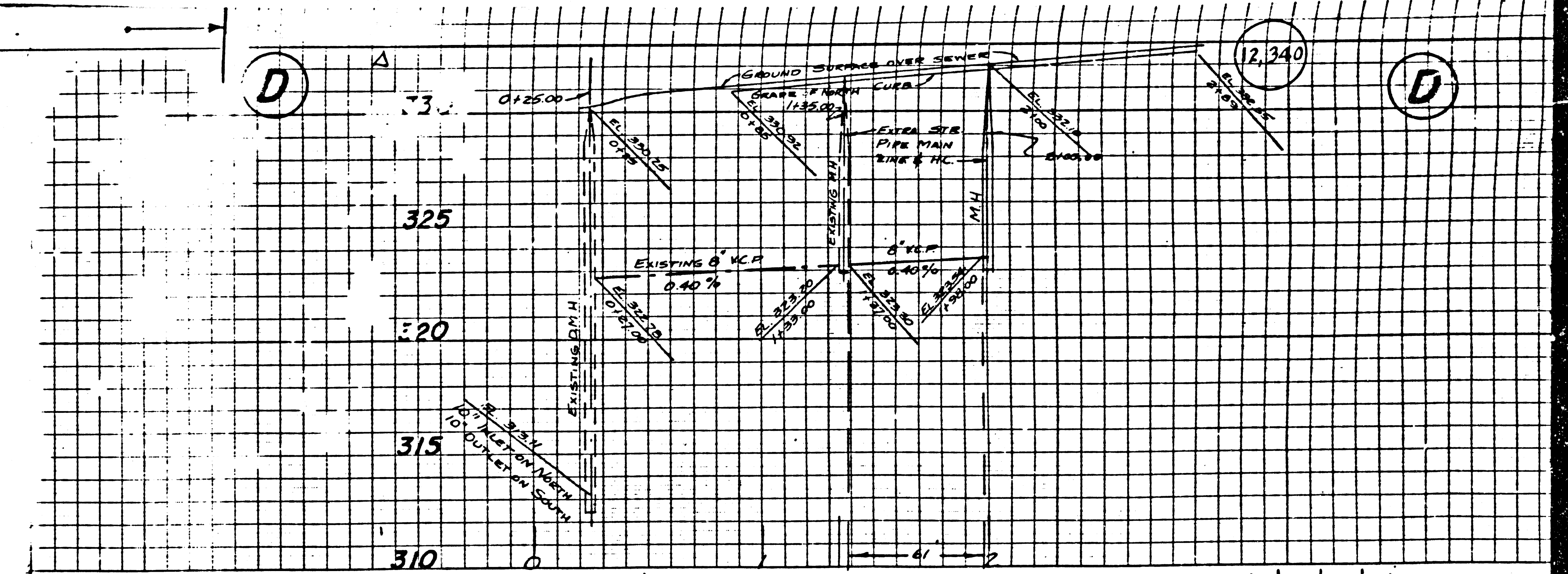
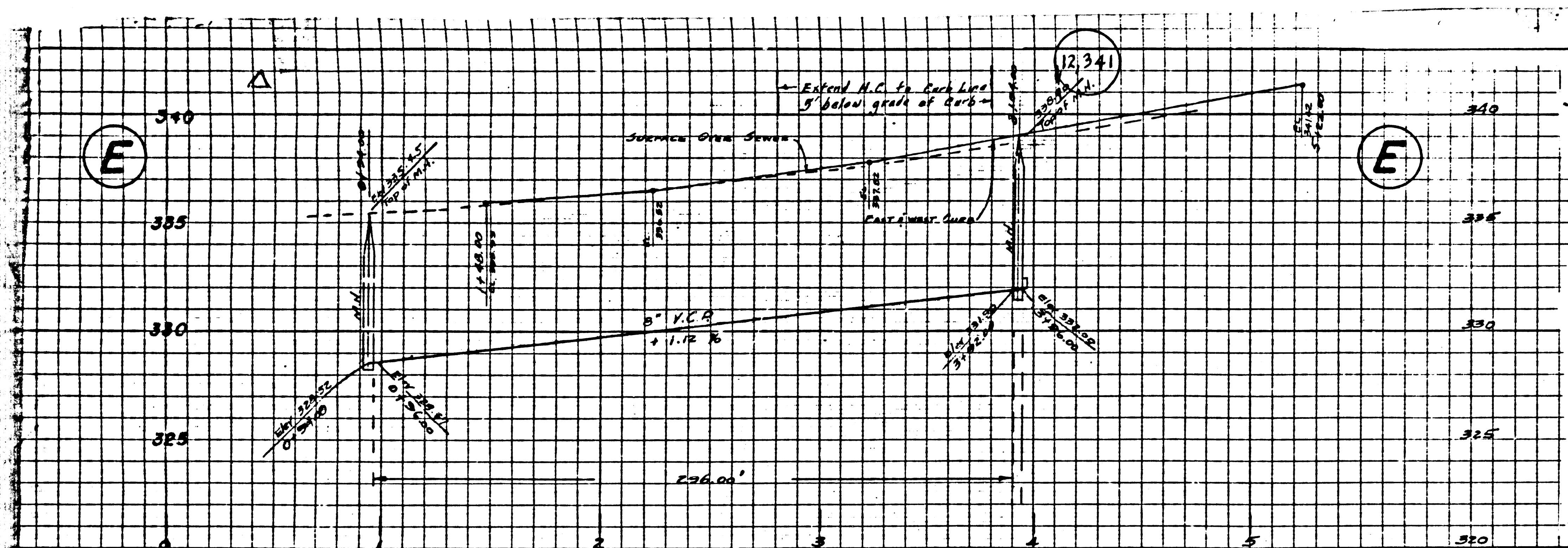
APPROVED: *W. H. Gregory*
 CHIEF DEPUTY COUNTY ENGINEER
 APPROVED: *W. H. Kraw*
 CHIEF ENGINEER OF COUNTY SANITATION DIST. NO. 15
 CHECKED BY: *John A. ...* 10-9-50
 OFFICE OF COUNTY ENGINEER REG. C.E. NO. 7984



590
 11 22 10
 BC 1290







0581 12/3/35

④