

BLVD. L.A. Co. F.C. No. 120-170 (Line 475)  
 S.W. Cor. Del Amo Blvd & Clark Ave.  
 Based on C.C. Co. Curve at Del Amo Blvd  
 4' 2\"/>

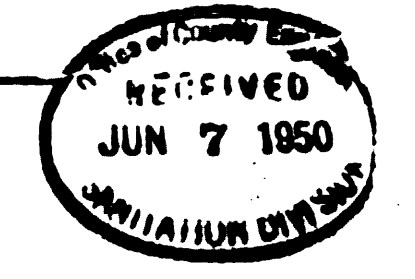
**DOUBLE SCALE**

- NOTE: NO REPRESENTATIVE OF THE COUNTY ENGINEER WILL SURVEY OR LAY OUT ANY PORTION OF THE WORK. THE OWNER OR HIS AUTHORIZED REPRESENTATIVE SHALL FURNISH THE COUNTY ENGINEER WITH GRADE SHEETS AND STATIONS FOR ALL TRENCH CONNECTIONS AND Y BRANCHES AND SHALL PROVIDE MARKS FOR THEM AT THEIR PROPER LOCATIONS WITH STATIONING PLAINLY MARKED. ANY CHANGE OF LOCATION SHALL BE REQUESTED IN WRITING BY THE OWNER OR HIS REPRESENTATIVE. NO REVISIONS SHALL BE MADE IN THESE PLANS WITHOUT APPROVAL OF THE COUNTY ENGINEER.
1. USE STANDARD MANHOLE FRAMES AND COVERS, S-111.
  2. USE STANDARD STRENGTH PIPE EXCEPT AS NOTED.
  3. USE CENTER MANHOLE FOR ALL VERTICAL PIPE JOINTS.
  4. RESURFACE ALL TRENCH WITHIN PAVED AREA TO MEET L.A. COUNTY ROAD DEPT. REQUIREMENTS IN ACCORDANCE WITH THE PERMIT.
  5. ENCASE FOUR FEET OF SEWER AT POINTS OF INTERFERENCE WITH POLES, 3'-8\"/>
  - 6. HOUSE CONNECTIONS TO BE CONSTRUCTED WITH INVERT AT PROPERTY LINE & 1 FEET BELOW CURB GRADE.
  - 7. ALL STRUCTURES SHALL BE BRICK SEWER STRUCTURES, S-104.
  - 8. PROVIDE SINKS ON THE PROPERTY LINES OR TROWER LINES PROTECTED AT RIGHT ANGLES TO THE SEWER LINE AT THE CENTER LINE OF EACH MANHOLE.

**PROFILE, GRADE AND ALIGNMENT OF  
 SANITARY SEWERS  
 TO BE CONSTRUCTED IN  
 DEL AMO BLVD.  
 BETWEEN CLARK AVE. & DOWNEY AVE.**

PRIVATE CONTRACT NO. 1298  
 W.S. 30, 31, 32  
 SHEET 1 OF 2 SHEETS  
 VERT. 1" = 1'  
 HOR. 1" = 40'  
 APRIL 1950  
 PREPARED IN THE OFFICES OF  
**ENGINEERING SERVICE CORPORATION**

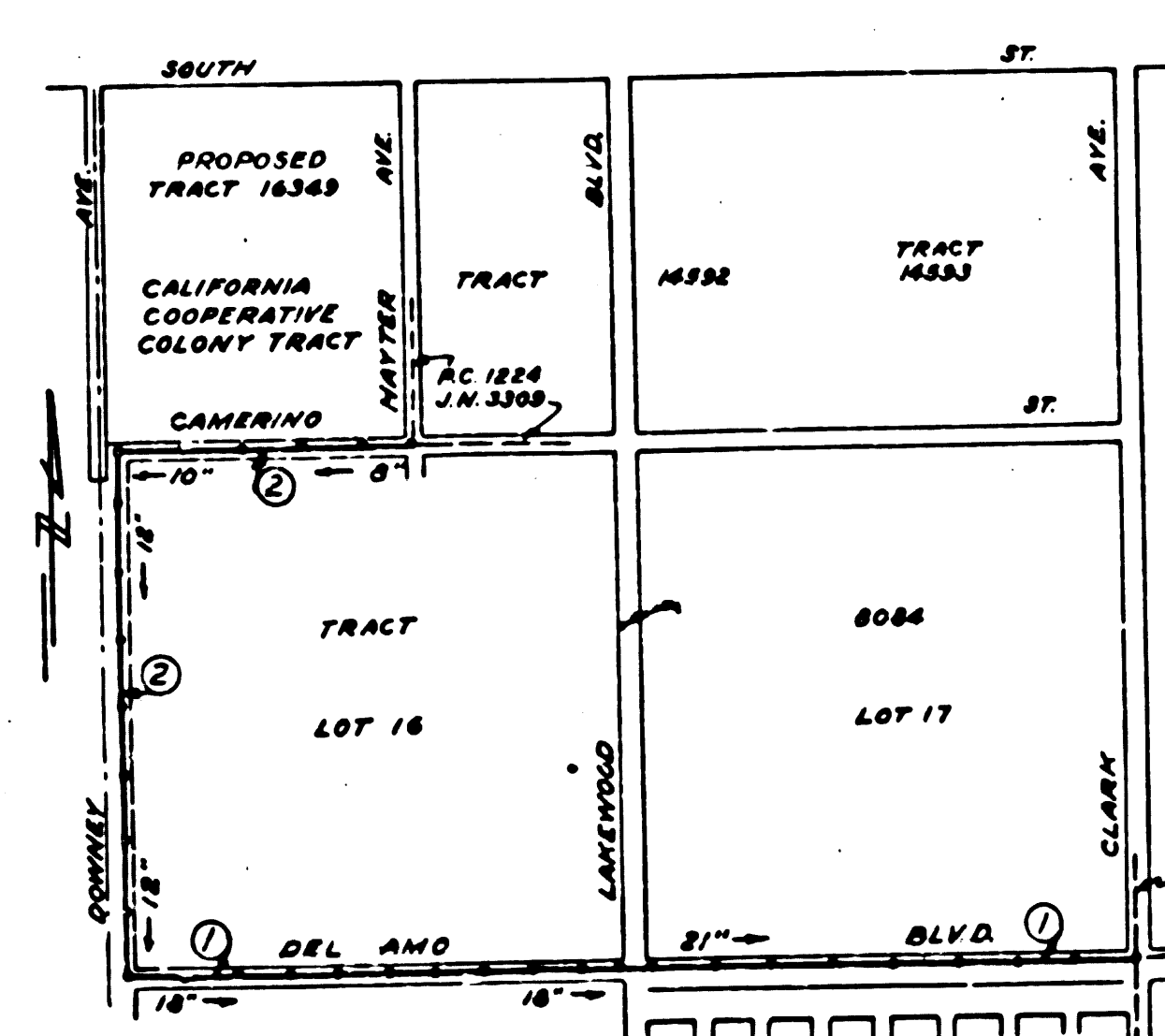
BY *E.F. Mceny*  
 REG. C. E. NO. 141



FOR LEGEND  
 SEE PLAN NO. 54-44

NOTE: GRADES TO WHICH THIS IMPROVEMENT IS TO BE CONSTRUCTED ARE SHOWN ON PLANS AND PROFILES. GRADE POINTS FOR TOP OF CURB, CENTER LINE OF STREETS, OR CENTER LINE OF ALLEY ARE SHOWN BY CIRCLES ON PROFILES. AT ALL POINTS BETWEEN DESIGNATED POINTS THE GRADE SHALL BE ESTABLISHED SO AS TO CONFORM TO A STRAIGHT LINE DRAWN BETWEEN SAID DESIGNATED POINTS. ELEVATIONS ARE IN FEET ABOVE U. S. G. S. DATUM OR MEAN SEA LEVEL. THIS DRAWING AND THE DATA HEREON ARE HEREBY MADE A PART OF THE SPECIFICATIONS. WORK SHALL BE CONSTRUCTED ACCORDING TO SPECIFICATIONS ON FILE IN THE OFFICE OF THE COUNTY ENGINEER AND SHALL BE PROSECUTED ONLY IN THE PRESENCE OF THE COUNTY ENGINEER. BEFORE WORK CAN BE STARTED THE CONTRACTOR MUST OBTAIN A PERMIT TO EXCAVATE IN COUNTY STREETS FROM THE L. A. COUNTY ROAD DEPT. 211 SO MAIN ST. AND MAKE A DEPOSIT WITH THE COUNTY ENGINEER, 828 COUNTY ENGINEERING BUILDING SUFFICIENT TO COVER THE COST OF CONSTRUCTION INSPECTION AND RECORD PLANS. APPROVAL OF THIS PLAN BY THE COUNTY OF LOS ANGELES DOES NOT CONSTITUTE A REPRESENTATION AS TO THE ACCURACY OF OR THE EXISTENCE OR NON-EXISTENCE OF ANY UNDERGROUND UTILITY, PIPE, OR STRUCTURE WITHIN THE LIMITS OF THIS PROJECT.

COUNTY OF LOS ANGELES, CALIFORNIA  
 APPROVED: *[Signature]*  
 COUNTY ENGINEER  
 APPROVED: *[Signature]*  
 ACTING CHIEF ENGINEER OF COUNTY SANITATION DISTRICT NO. 3  
 CHECKED: *[Signature]*  
 OFFICE OF COUNTY ENGINEER, REG. C. E. NO. 1582



**ENGINEERING SERVICE CORPORATION**  
 1127 W. WASHINGTON BLVD.  
 LOS ANGELES 15 CALIF.

REVISIONS

Corr. Re. L.A. Co. Page	4/10/50	TRACED BY: C.G.D.
		DESIG. BY:
		CK'D BY: <i>[Signature]</i>
		SUBMITTED: 4/10/50

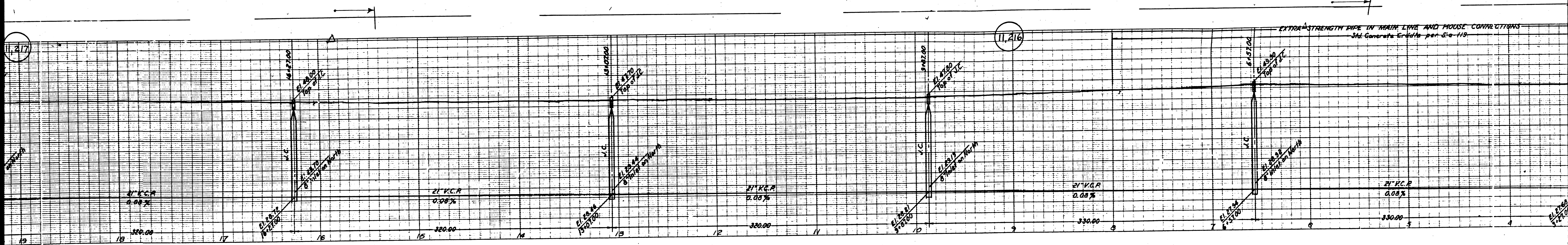
SUB STRUCTURES CK'D

W O NO	DWG NO	DATE	SCALE
5977-18		4/10/50	49

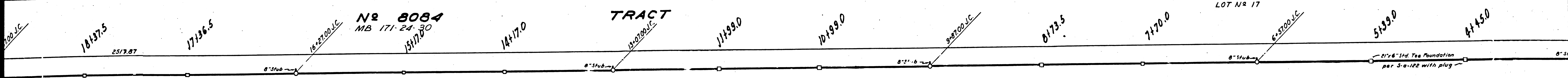
P.C. 1298 J.N. 3386  
 INDEX MAP  
 NO SCALE

DEL AMO BLVD -  
 DEL AMO BLVD -  
 B.C. 1588  
 JUN 7 1950  
 JUN 30 1950





EXTRA STRENGTH PIPE IN MAIN LINE AND HOUSE CONNECTIONS  
Std. Concrete Bricks per S.C.-119



**№ 8084**  
MB 171-24-30  
1517.00

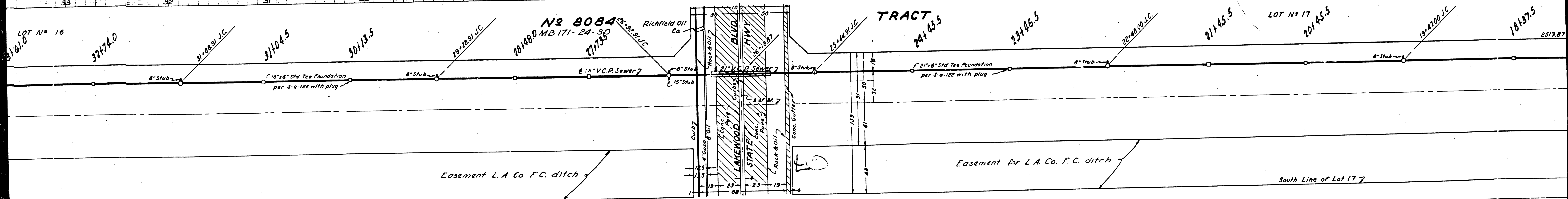
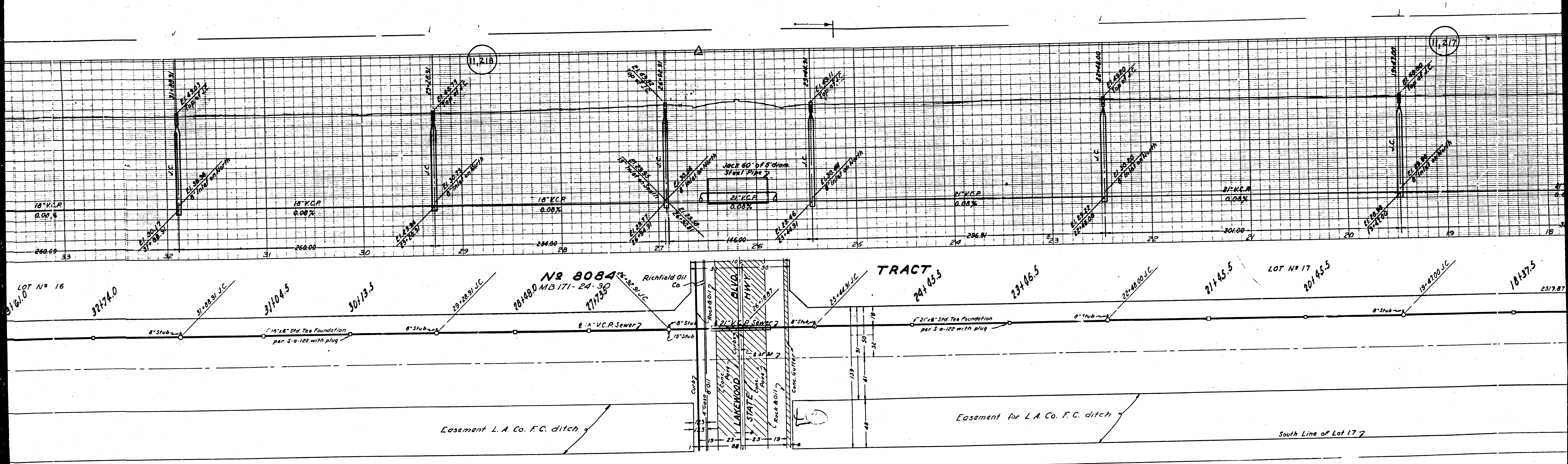
**TRACT**

LOT № 17

LD

Easement



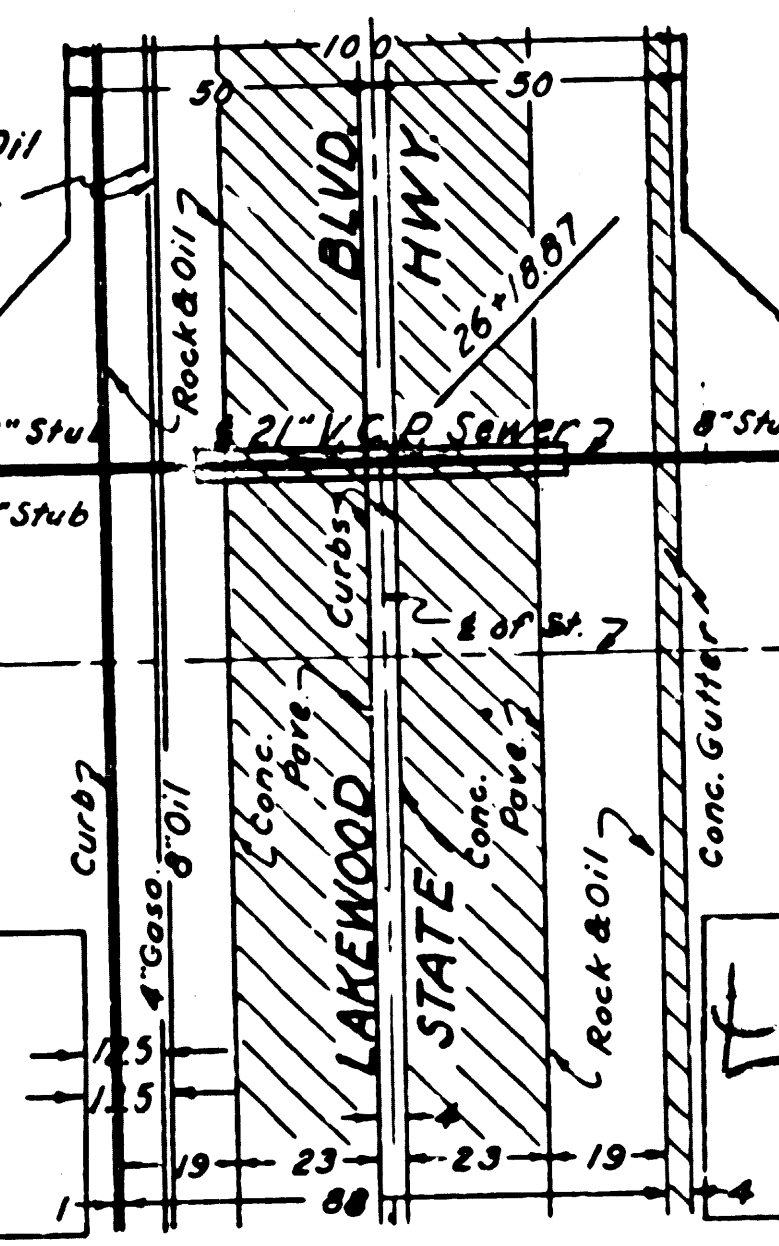


LOT No 16  
 3161.0  
 32174.0  
 31189.1 J.C.  
 31104.5  
 30113.5  
 29122.91 J.C.  
**Tract 24105.5**  
**No 8084**  
 MB 171-24-30  
 28148.0  
 27735  
 Richfield Oil Co.  
 21\"/>

Easement L. A. Co. F. C. ditch

Easement for L. A. Co. F. C. ditch

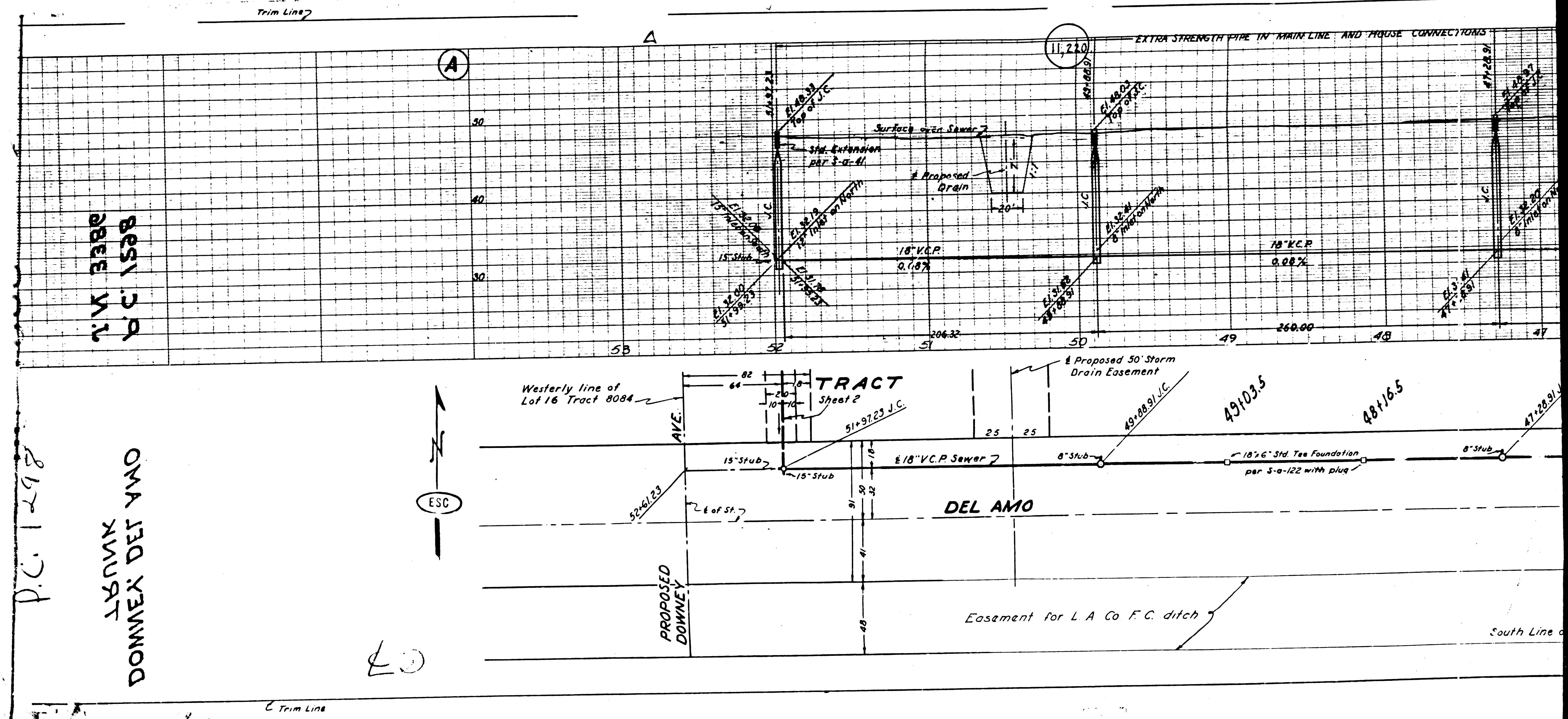
South Line of Lot 17









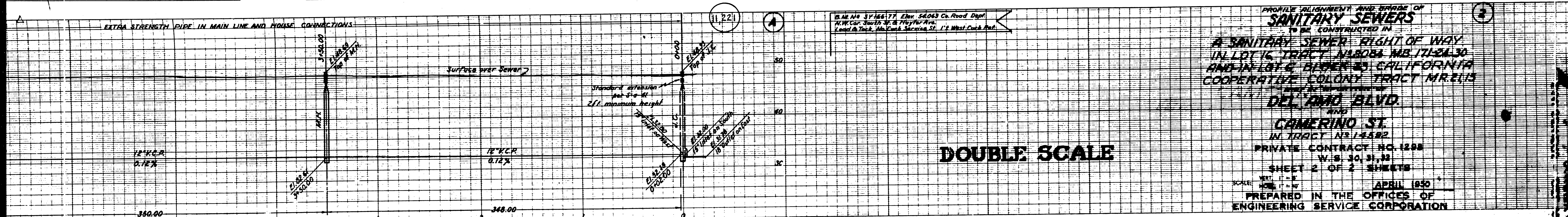


N 1/4 3888  
 P.C. 1538

P.C. 1298  
 DONNEX DET YAO  
 T XWUAT

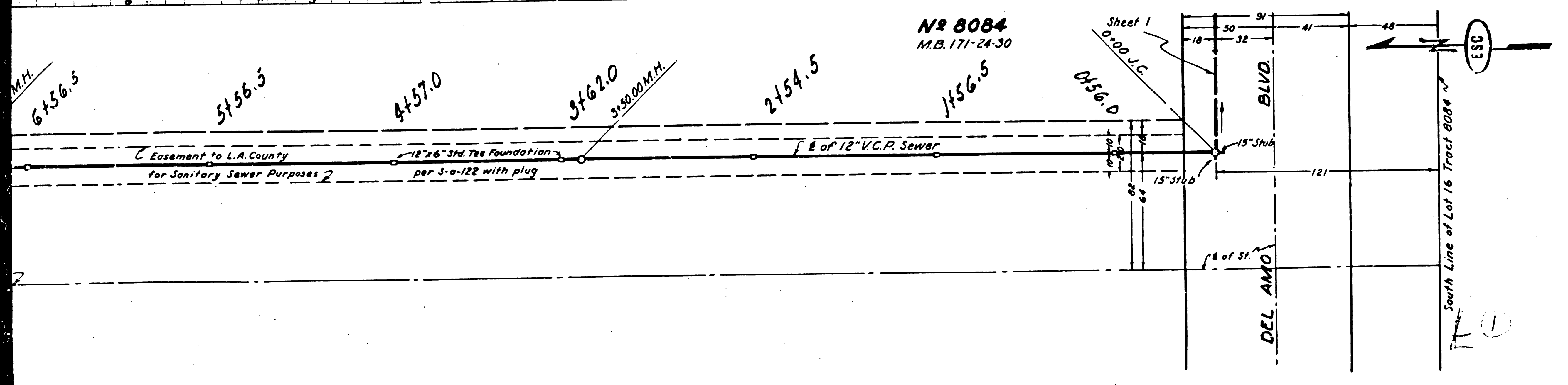
20





DOUBLE SCALE

PROFILE ALIGNMENT AND GRADE OF  
**SANITARY SEWERS**  
 TO BE CONSTRUCTED IN  
 A SANITARY SEWER RIGHT OF WAY  
 IN LOT 16 TRACT N<sup>o</sup> 8084 M.B. 171-24-30  
 AND IN LOT 6 BLOCK 25 CALIFORNIA  
 COOPERATIVE COLONY TRACT M.R. 2115  
 DEL AMO BLVD.  
 CAMERINO ST.  
 IN TRACT N<sup>o</sup> 1482  
 PRIVATE CONTRACT NO. 1288  
 W.S. 30, 31, 32  
 SHEET 2 OF 2 SHEETS  
 APRIL 1950  
 PREPARED IN THE OFFICES OF  
 ENGINEERING SERVICE CORPORATION



ENGINEERING SERVICE CORPORATION  
 1127 W. WASHINGTON BLVD.  
 LOS ANGELES 15, CALIF.

REVISIONS

Rev. No.	DATE	REVISIONS
1	6/7/50	TRACED BY C.G.D.
2		DESIGNED BY
3		CHECKED BY
4		SUBMITTED BY
5		DATE

SUB STRUCTURES CHECKED

W.O. NO.	DWG. NO.	DATE	SCALE	L.S.	P.S.
5977-1B		4-7-50	L-7		

FOR LEGEND  
 SEE PLAN NO. S-6-64  
 FOR CONSTRUCTION NOTES SEE SHEET 1

COUNTY OF LOS ANGELES, CALIFORNIA

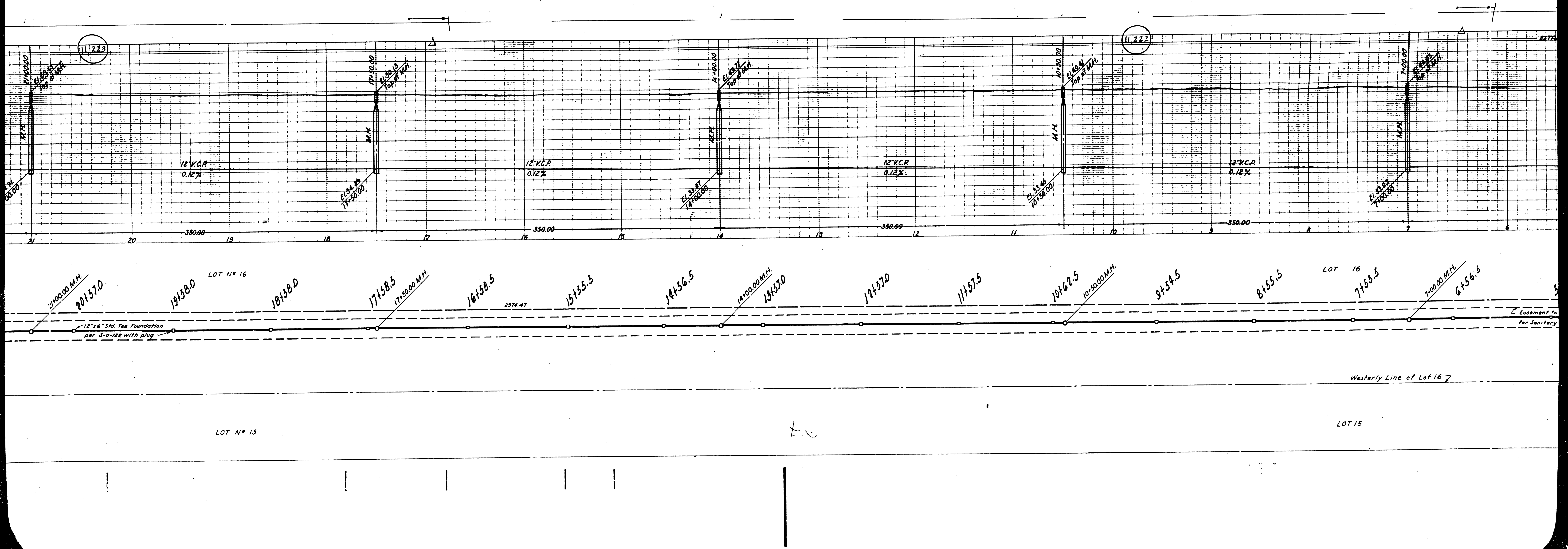
APPROVED: [Signature]  
 COUNTY ENGINEER

APPROVED: [Signature]  
 ACTING CHIEF ENGINEER OF COUNTY  
 SANITATION DISTRICT NO. 8

CHECKED: [Signature] 4-13-50  
 OFFICE OF COUNTY ENGINEER, REG. C.E. NO. 1582

3  
 6-5-50  
 3852-1-35  
 2852-1-35-20  
 3852-1-35-20  
 3  
 7/2/57





(11,222)

(11,222)

12" V.C.P.  
0.12%

12" V.C.P.  
0.12%

12" V.C.P.  
0.12%

12" V.C.P.  
0.12%

M.H.  
EL. 17+30.00  
TOP OF M.H.  
EL. 17+20.00  
BOT. OF M.H.

M.H.  
EL. 14+30.00  
TOP OF M.H.  
EL. 14+20.00  
BOT. OF M.H.

M.H.  
EL. 11+30.00  
TOP OF M.H.  
EL. 11+20.00  
BOT. OF M.H.

M.H.  
EL. 8+30.00  
TOP OF M.H.  
EL. 8+20.00  
BOT. OF M.H.

14+00.00 M.H.  
20+57.0

19+58.0 LOT # 16

18+58.0

17+58.5  
17+50.00 M.H.

16+58.5

15+55.5

14+56.5

14+00.00 M.H.  
13+57.0

12+57.0

11+57.5

10+62.5  
10+50.00 M.H.

9+54.5

8+55.5

LOT # 16  
7+55.5

7+00.00 M.H.  
6+56.5

12" x 16" Std. Tee Foundation  
per S-9-J22 with plug

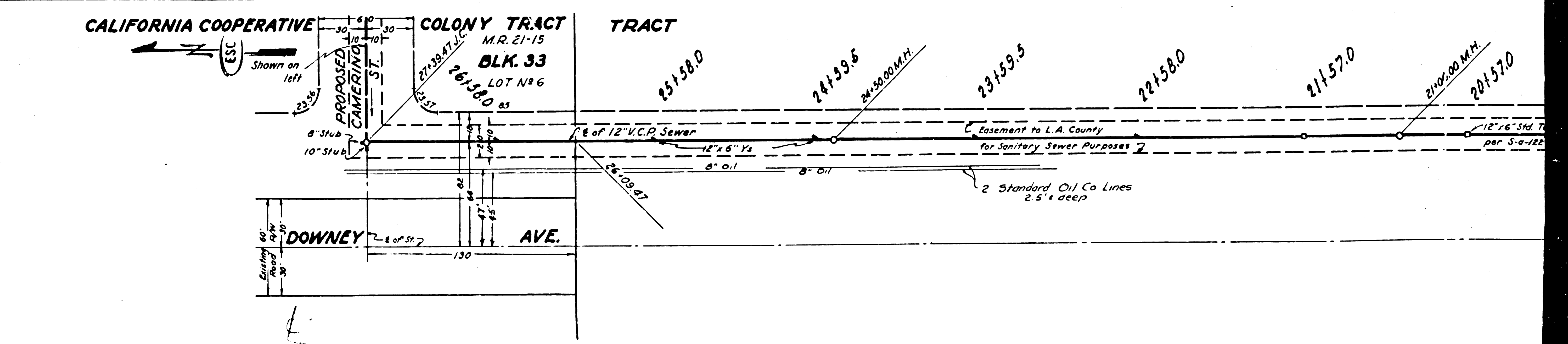
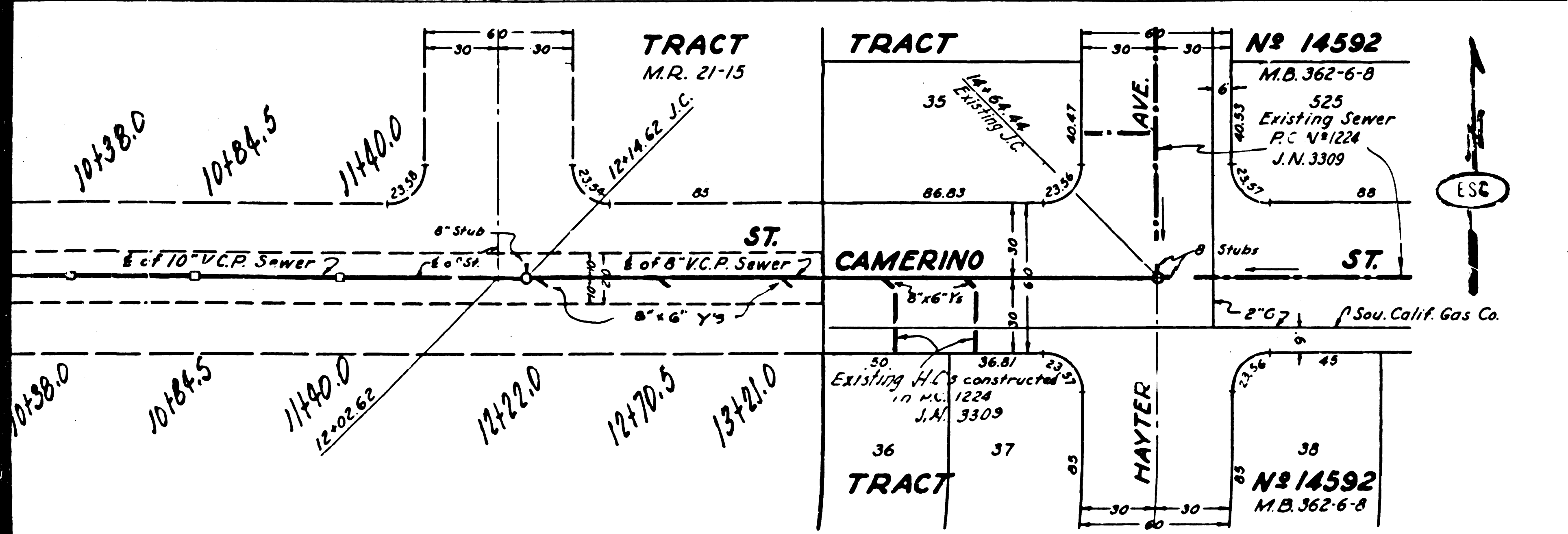
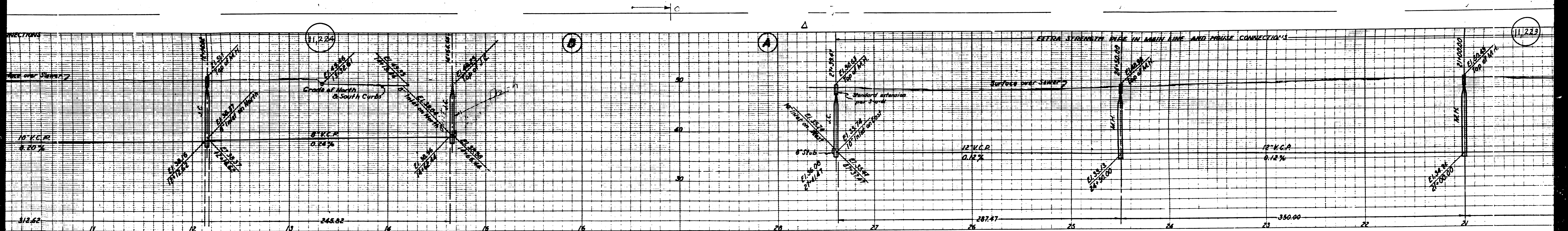
Easement for  
Sanitary

Westerly Line of Lot 16

LOT # 15

LOT 15







651 CA  
852 M.A.

328 ZEMER - DET VMO - DONNER TERRACE

PC 1710

