

**PROFILE ALIGNMENT AND GRADE OF SANITARY SEWERS TO BE CONSTRUCTED IN**  
**246<sup>th</sup> STREET**  
**247<sup>th</sup> STREET**  
**247<sup>th</sup> PLACE**  
**248<sup>th</sup> STREET**  
 BETWEEN BOUNDARY LINE OF LOS ANGELES AND WESTERLY LINE OF TRACT #16151

**PRIVATE CONTRACT No. 1302**  
**w.s. 28**  
**SHEET 1 OF 1 SHEETS**

VERT. 1"=4'  
 HORIZ. 1"=40'

PREPARED IN THE OFFICE OF  
**KARL F. TUTTLE**  
 CIVIL ENGINEER  
 110 S. W. 1<sup>st</sup> ST. LOS ANGELES 1, CALIF.

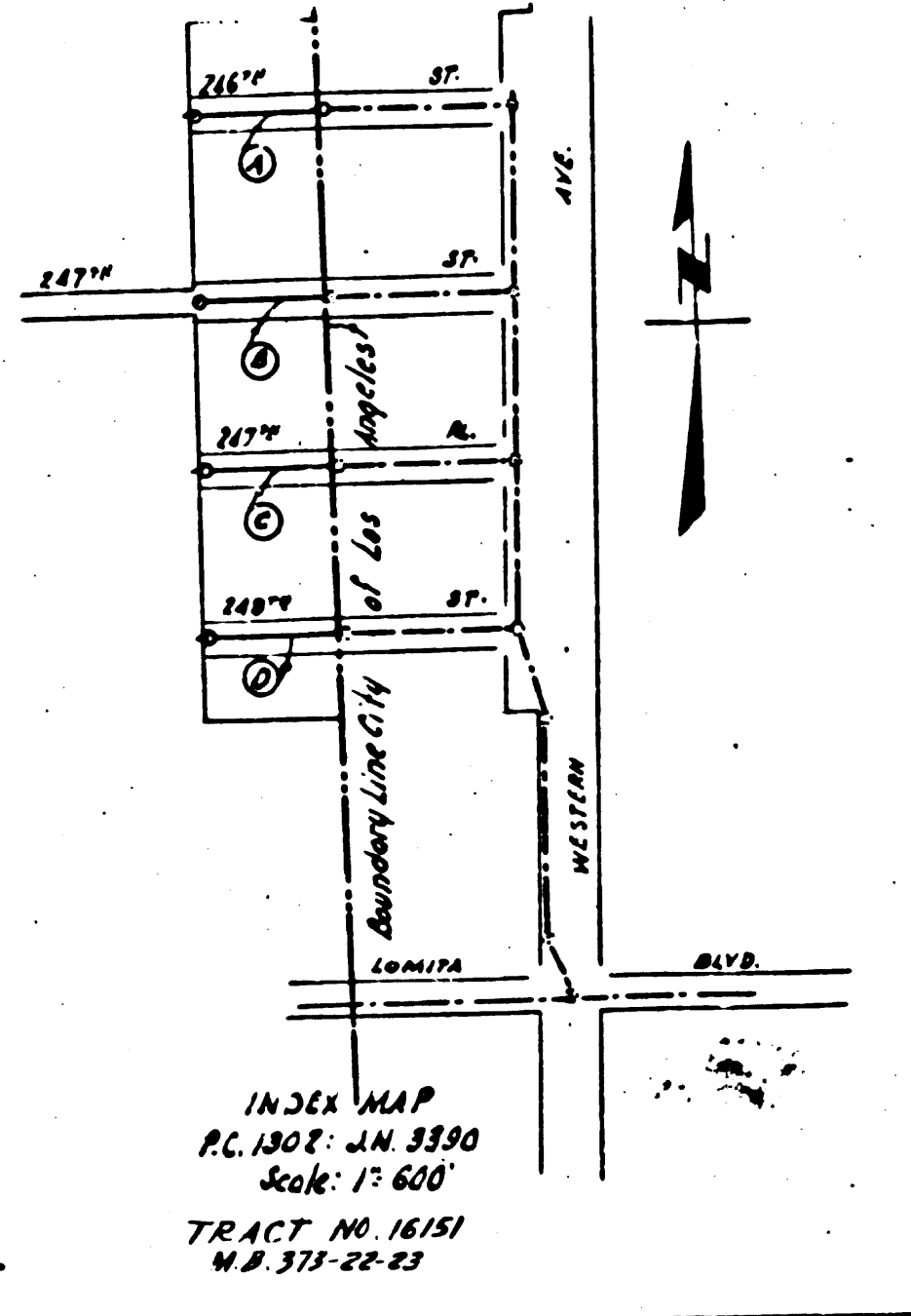
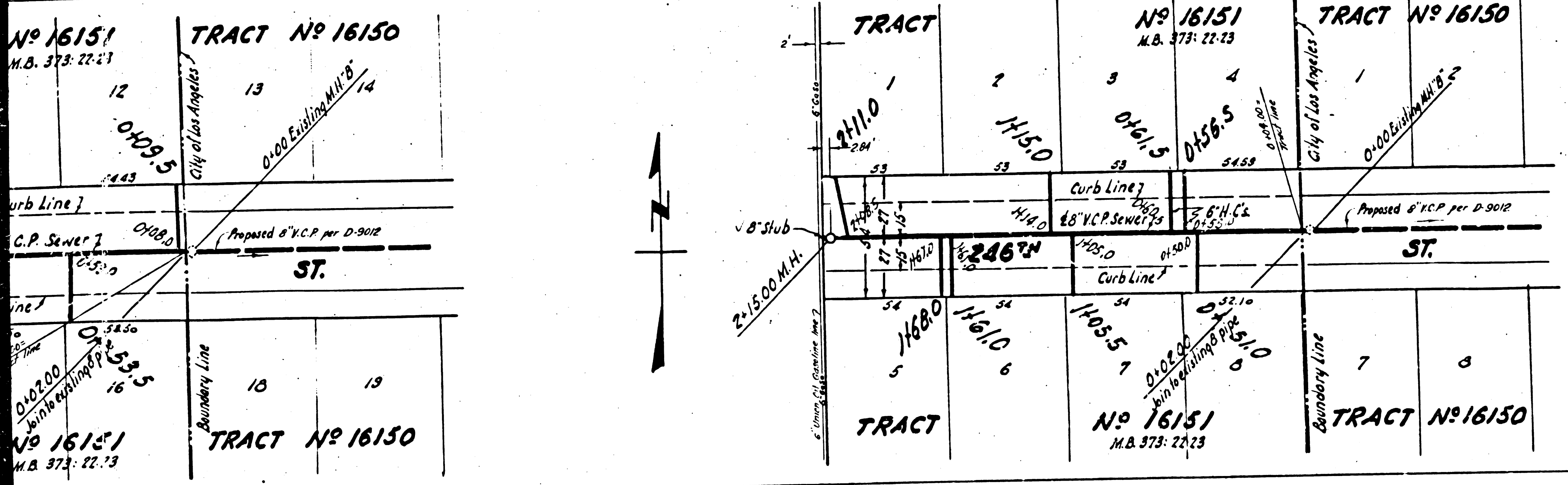
- NOTES:**
- USE STANDARD MANHOLE FRAMES AND COVERS, 24" DIA.
  - USE STANDARD STORMWATER PIPES (EXCEPT AS NOTED).
  - USE CAST-IRON MANHOLE BOSS, ALL STANDARD, CAST IRON JOINTS.
  - RESTRAP ALL TRENCH WITHIN PAVED AREA TO MEET LOS ANGELES COUNTY ROAD DEPARTMENT REQUIREMENTS IN ACCORDANCE WITH THE COUNTY ROAD DEPARTMENT SPECIFICATIONS.
  - CONSTRUCT ROOSE CONNECTIONS WITH INVERT AT PROPERTY LINE (5) FEET BELOW CURB GRADE (EXCEPT AS NOTED).
  - ENCASE FOUR FEET OF SEWER AT POINTS OF INTERFERENCE WITH POLES AS PER 16-111.
  - ALL STRUCTURES SHALL BE BRICK OR CONCRETE STRUCTURES 24" DIA.
  - CONSTRUCT TOPS OF ALL STRUCTURES IN RIGHTS OF WAY 4" ABOVE STANDARD GRADE.

**G.D. Small**  
 HARBOR DISTRICT ENGINEER  
 APPROVED June 29, 1950  
 CITY ENGINEER  
 CITY OF LOS ANGELES

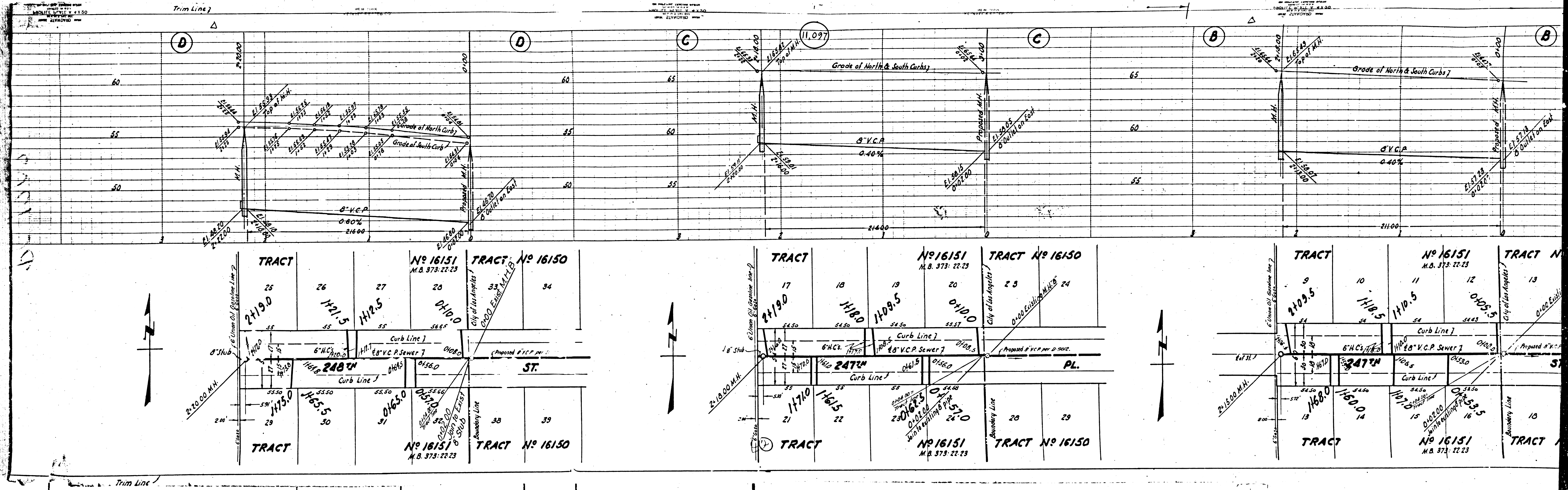
**FOR LEGEND**

CONTRACT NO. 1302  
 W.S. 28  
 SHEET 1 OF 1  
 JUL 21 1950

APPROVED  
**James T. Rothermel**  
 7/10/50  
 CHIEF OF BUREAU OF PUBLIC WORKS



July 19, 1950



Trim Line

Trim Line

Trim Line

D

D

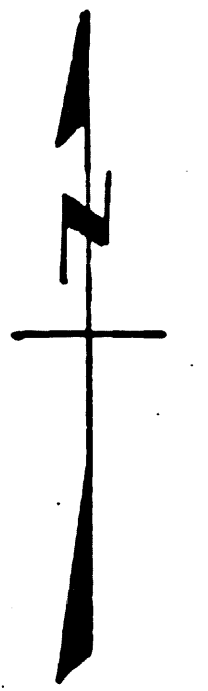
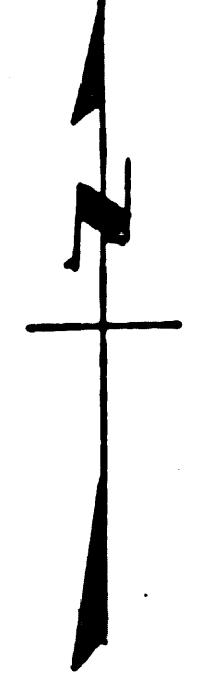
C

C

B

B

11.097



Trim Line

Trim Line

Trim Line

TRACT

TRACT

TRACT

TRACT

TRACT

TRACT

TRACT

TRACT

TRACT

No 16151

No 16151

No 16150

No 16151

No 16151

No 16150

No 16151

No 16151

No 16150

M.B. 373-22-23

M.B. 373-22-23

M.B. 373-22-23

M.B. 373-22-23

M.B. 373-22-23

M.B. 373-22-23

M.B. 373-22-23

M.B. 373-22-23

M.B. 373-22-23

25

26

27

28

29

17

18

19

20

21

9

10

11

12

13

2119.0

1121.5

1122.5

0110.0

2119.0

1180.0

1109.5

0110.0

2109.5

1118.5

1110.5

0110.5

0102.5

2175.0

1165.5

0165.0

0157.0

2175.0

1171.0

1161.5

0161.5

0157.0

2168.0

1160.0

1171.5

0163.5

0153.5

29

30

31

32

33

21

22

23

24

13

14

15

16

17

1175.0

1165.5

0165.0

0157.0

2175.0

1171.0

1161.5

0161.5

0157.0

2168.0

1160.0

1171.5

0163.5

0153.5

29

30

31

32

33

21

22

23

24

13

14

15

16

17

1175.0

1165.5

0165.0

0157.0

2175.0

1171.0

1161.5

0161.5

0157.0

2168.0

1160.0

1171.5

0163.5

0153.5

29

30

31

32

33

21

22

23

24

13

14

15

16

17

1175.0

1165.5

0165.0

0157.0

2175.0

1171.0

1161.5

0161.5

0157.0

2168.0

1160.0

1171.5

0163.5

0153.5

29

30

31

32

33

21

22

23

24

13

14

15

16

17

1175.0

1165.5

0165.0

0157.0

2175.0

1171.0

1161.5

0161.5

0157.0

2168.0

1160.0

1171.5

0163.5

0153.5

29

30

31

32

33

21

22

23

24

13

14

15

16

17

1175.0

1165.5

0165.0

0157.0

2175.0

1171.0

1161.5

0161.5

0157.0

2168.0

1160.0

1171.5

0163.5

0153.5

29

30

31

32

33

21

22

23

24

13

14

15

16

17