

- Note:
1. Use standard strength pipe.
 2. Use standard manhole frames and covers, 5'-0" x 117".
 3. Use cement mortar for all vitrified clay pipe joints.
 4. Resurface all trench within paved areas to meet L.A. Co. Road Dept requirements.
 5. All structures to be brick sewer structures, 5'-0" x 10'-0".
 6. Construct house connections with invert at property line 5' below curb grade.
 7. Encase 8" of sewer at points of interference with poles as per 5'-0" x 117".

Note: No representative of the County Engineer will survey or lay out any portion of the work. The owners or their authorized representative will furnish the County Engineer with grade and station of a house connection and 4" branches and shall provide stakes for them at their proper locations with straining flags marked. Any change in location shall be requested in writing by the owners or their representative. No easements will be made in these plans without approval of the County Engineer.

Note: Approval of this plan by the County of Los Angeles does not constitute a representation as to the accuracy of the location of or the existence or non-existence of any underground utility or structure within the limits of this project. This note applies to all sheets.

For Legend See Plan 5-a-64

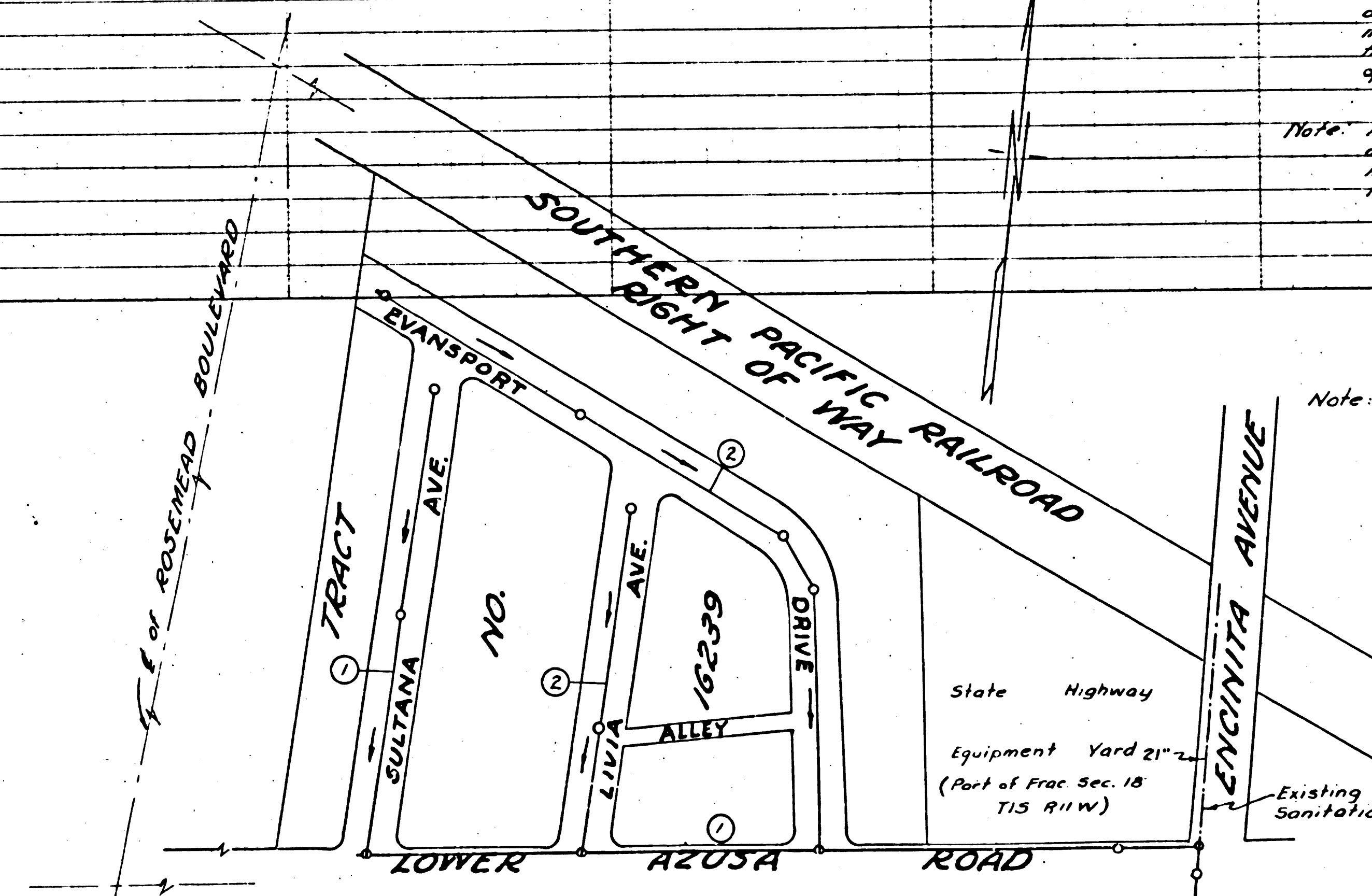
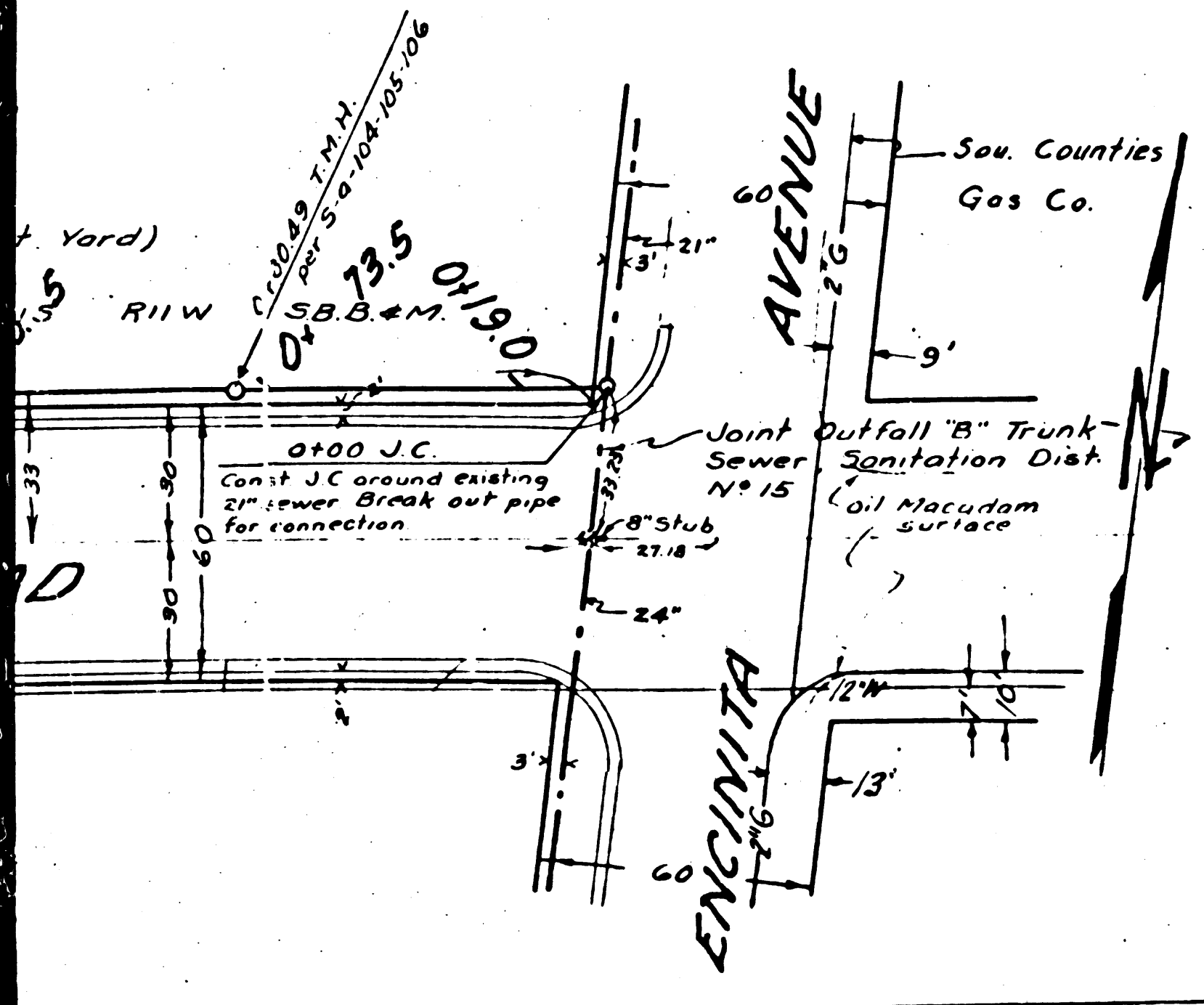
10320

**PROFILE, ALIGNMENT, AND GRADE OF
SANITARY SEWERS
TO BE CONSTRUCTED IN
(A) LOWER AZUSA ROAD FROM ENCINITA
AVENUE TO SULTANA AVENUE
(B) SULTANA AVENUE FROM LOWER AZUSA
ROAD TO EVANSPOUR DRIVE**

PRIVATE CONTRACT NO. 1308
K.S. 44
SHEET 1 OF 2 SHEETS

Scale: Horiz. 1" = 40'
Vert. 1" = 4'
March 1950

Prepared by *Jean W. Mann R.E. 3157*

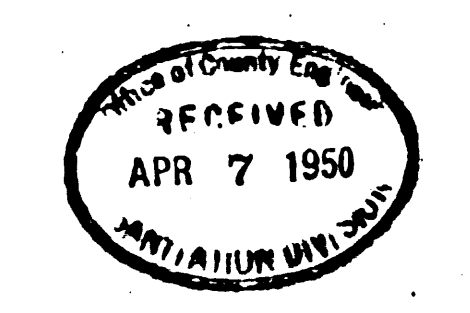


- Note:
1. The grades to which this improvement is to be constructed are shown on plans and profiles.
 2. Grade points for top of curb, center line of street, or center line of alley are shown by circles on profiles. At all points between designated points the grade shall be established so as to conform to a straight line drawn between said designated points.
 3. Elevations are in feet above U.S.G.S. datum or mean sea level.
 4. This drawing and the data hereon are hereby made a part of the specifications.
 5. Work shall be constructed according to specifications on file in the office of the County Engineer.
 6. Before work can be started the contractor must obtain a permit to excavate in County streets from the L.A. Co. Road Dept., 211 S. Main St. and make a deposit with the County Engineer, 828 L.A. Co. Engineering Bldg. sufficient to cover cost of construction inspection and record plans.

County of Los Angeles

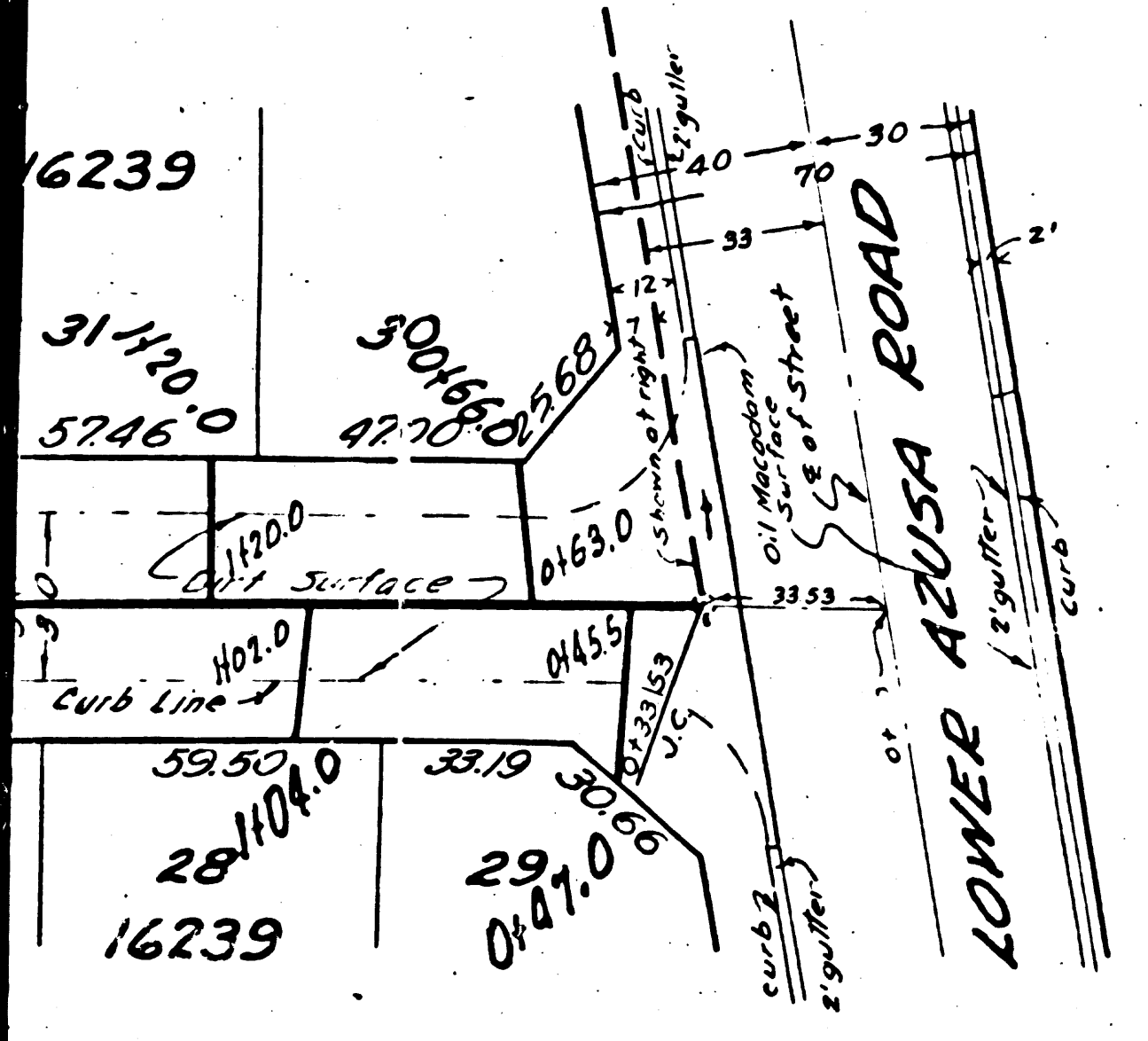
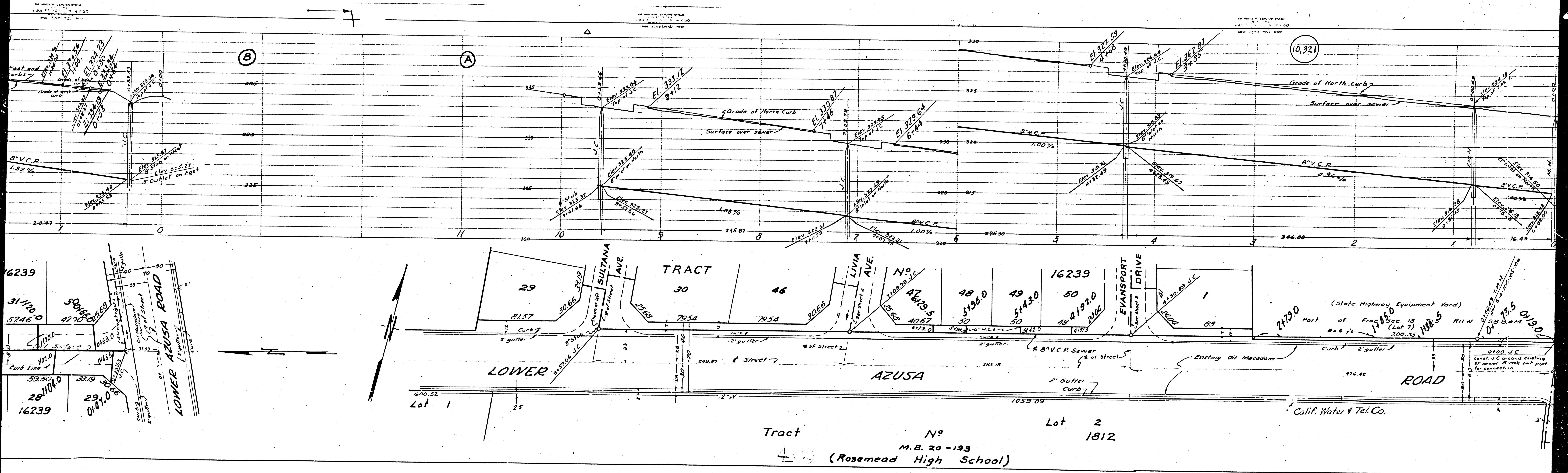
Approved *[Signature]*
County Engineer
Approved *[Signature]* OFFICE ENGINEER
For Chief Engineer, Co. Sanitation Dist. #15
Checked by *[Signature]*
Office of the County Engineer
R.E. No. 7103
Date 3/20/50

Revised 3-29-50 Moved sewer from E Lower Azusa Rd. to 33' North of E
Revision checked by *[Signature]*
Office of County Engineer
R.E. No. 7103
Date 3-29-50



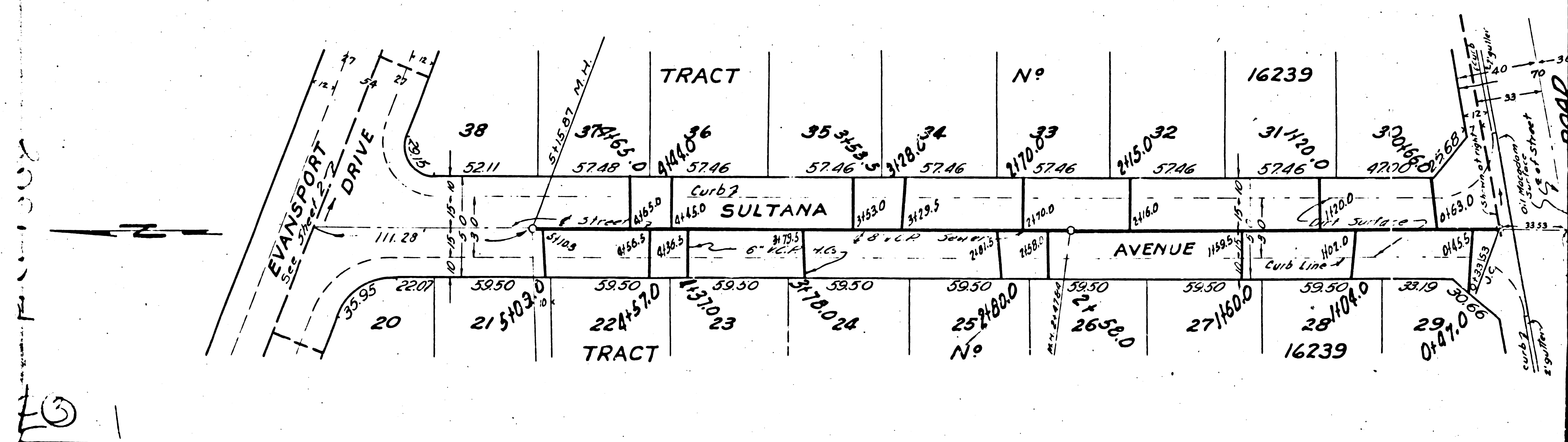
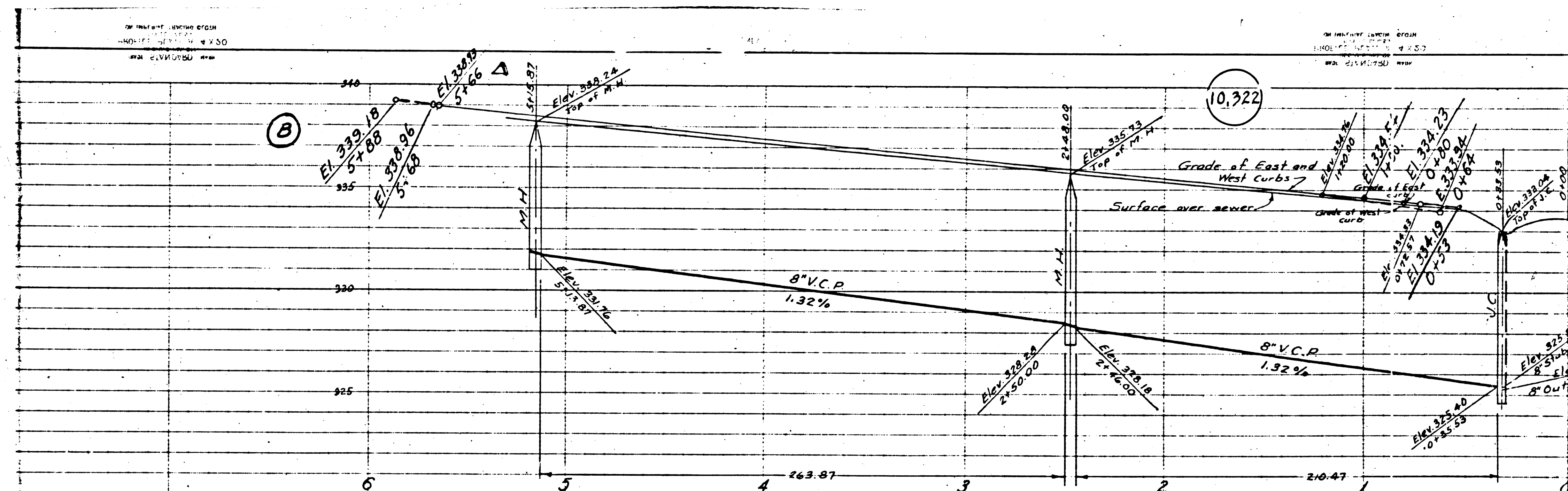
Index Map (Rosemead High School)
(No Scale)
PC. 1308 J.M. 3395

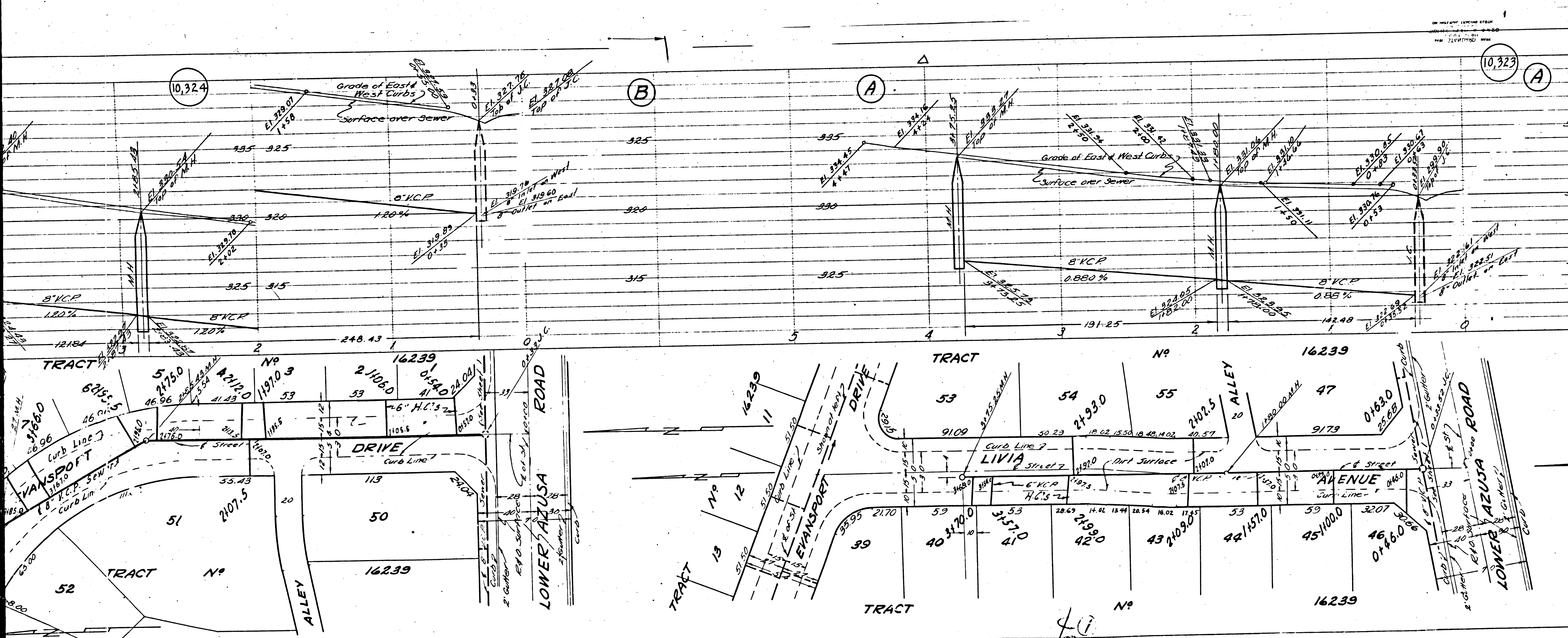
7/2/57



Tract No. 1812
 M. B. 20-193
 (Rosemead High School)

(State Highway Equipment Yard)
 Part of Prop. Sec. 18 (Lot 7)
 300.35, 1168.5
 Calif. Water & Tel. Co.





**PROFILE, ALIGNMENT, AND GRADE OF
SANITARY SEWERS
TO BE CONSTRUCTED IN**

(A) LIVIA AVENUE FROM LOWER AZUSA ROAD TO EVANSPORT DRIVE

(B) EVANSPORT DRIVE FROM LOWER AZUSA ROAD TO 111' WEST OF SULTANA AVENUE

2

PRIVATE CONTRACT NO. 1308
W.S. 44
SHEET 2 OF 2 SHEETS

Scale: Vert. 1" = 4'
Hori. 1" = 40'

MARCH 1950

Prepared by Leon W. Moore R.E. 3157

FOR LEGEND & CONSTRUCTION NOTES SEE SHEET NO. 1

COUNTY OF LOS ANGELES

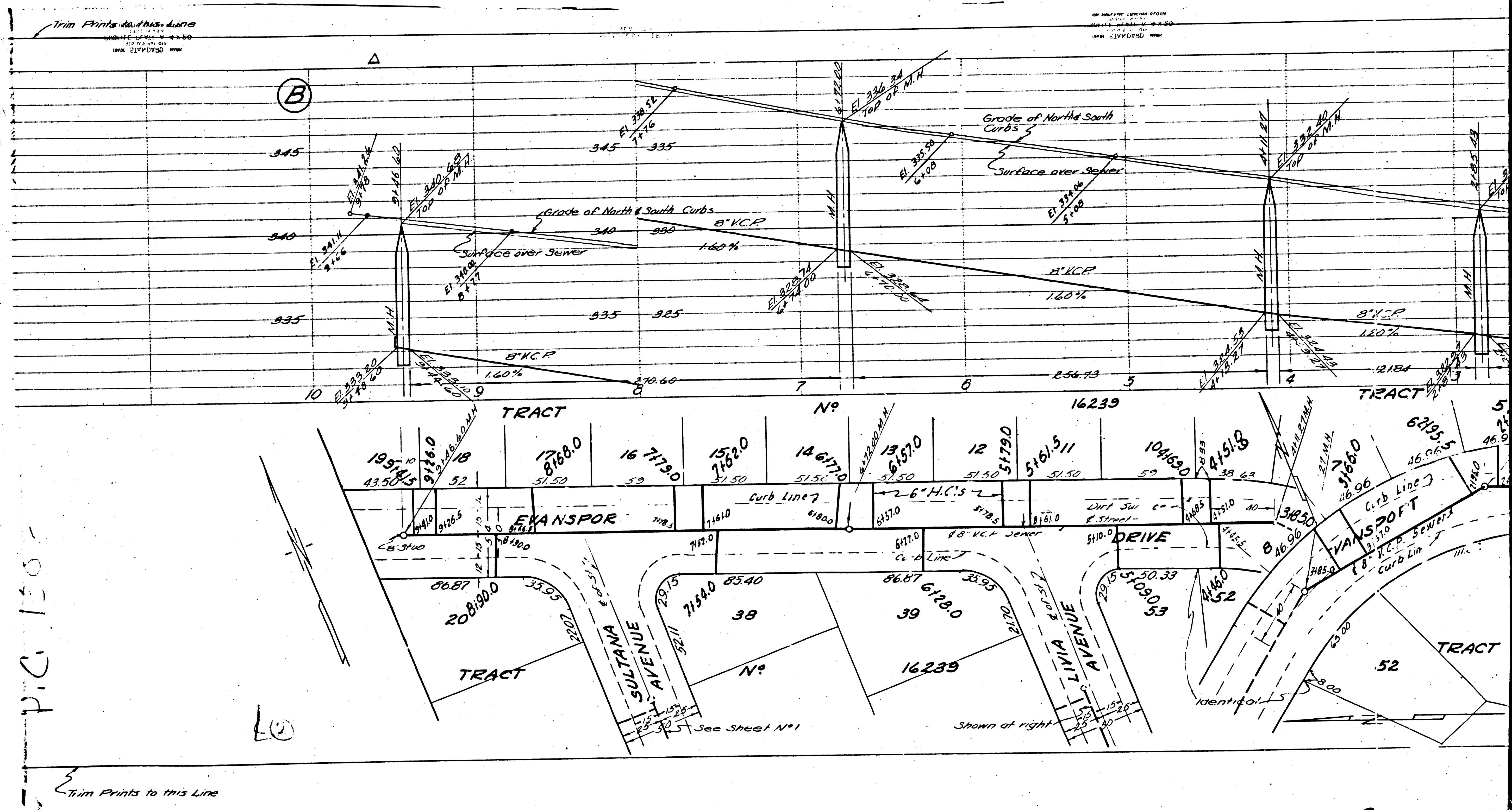
APPROVED BY [Signature]
COUNTY ENGINEER

APPROVED BY [Signature] OFFICE ENGINEER
FOR CHIEF ENGINEER CO. SANITATION DIST. NO. 15

CHECKED BY [Signature] 3/20/50
OFFICE OF COUNTY ENGINEER R.E. 7103

Revised 3-29-50 Moved sewer from
of Lower Azusa Rd. to 33' North of
Division checked by [Signature]
Office of County Engineer
Date 3/29/50

7/10



PIC 130-

LO

See Sheet N°1

Shown at right