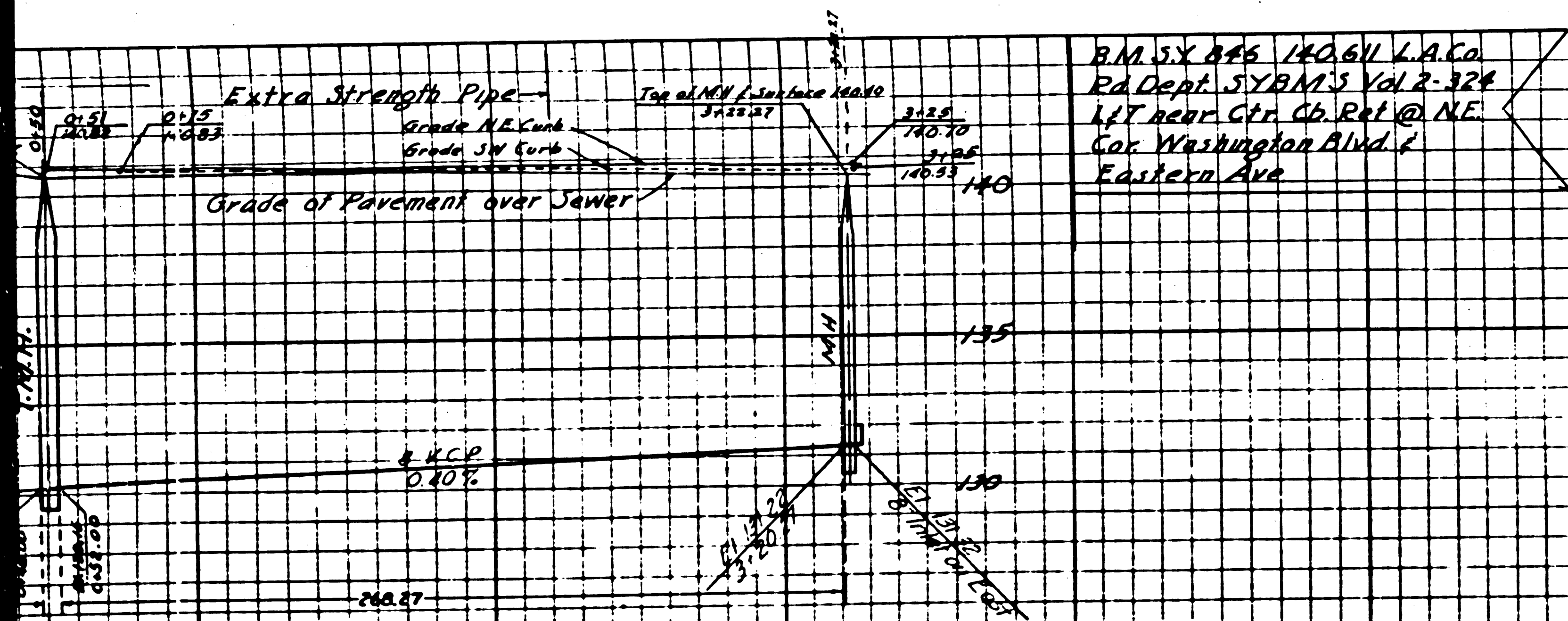


MADE IN U.S.A.
ENVIRO-GRAPHIC CO.
BY: J. W. MOULTON



B.M. 5X 886 140.61 L.A. Co.
Ed. Dept. SYBM'S Vol 2-324
1/4" NEAR CTR. CO. RPT. @ N.E.
COR. WASHINGTON BLVD. &
EASTERN AVE.

(10,38)

- (1) Use Standard Manhole Frame and Cover, S-a-117
- (2) Use Extra Strength Pipe
- (3) Use Cement Mortar for all Vitrified Clay Pipe Joints
- (4) Resurface all Trench within Paved Area to meet Los Angeles County Road Dept. Requirements
- (5) Construct House Connections with Invert at Property Line 7 feet below Curb Grade
- (6) All Structures shall be Brick Sewer Structures, S-a-102

NOTE
No representation of the County Engineer will be given or held for any portion of the work shown on this plan unless the contractor shall furnish the County Engineer with proper stakes and stakes at all bench elevations and y levels and shall provide stakes for them at their proper locations with staking clearly marked. Any change of location shall be reported in writing by the contractor to the County Engineer.
No revision shall be made on these plans without approval of the County Engineer. Approval of this plan by the County of Los Angeles does not constitute a representation on the part of the County of Los Angeles or any of its officers or employees as to the accuracy of the data shown on this plan or the construction of the work shown thereon.
Provide stakes within the limits of this project.
Provide stakes on the property lines or property lines produced at right angles to the sewer line at the centerline of each manhole.

PROFILE, ALIGNMENT AND GRADES OF
SANITARY SEWER
TO BE CONSTRUCTED IN
JILLSON STREET
FROM CENTER LINE OF EASTERN AVENUE TO 322.27 FEET SOUTHEAST
IN RANCHO LAGUNA DEED 6387-1

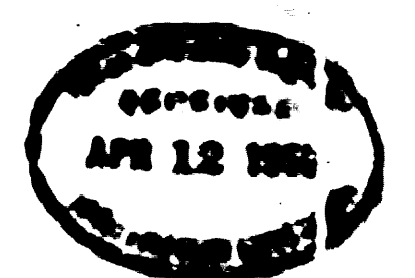
PRIVATE CONTRACT NO. PC 1324
M.S. 36
SHEET 1 OF 1 SHEET
PREPARED IN OFFICE OF
THOS. C. SHIELDS

BY: Thos. C. Shields
Reg. C.E. No. 2760

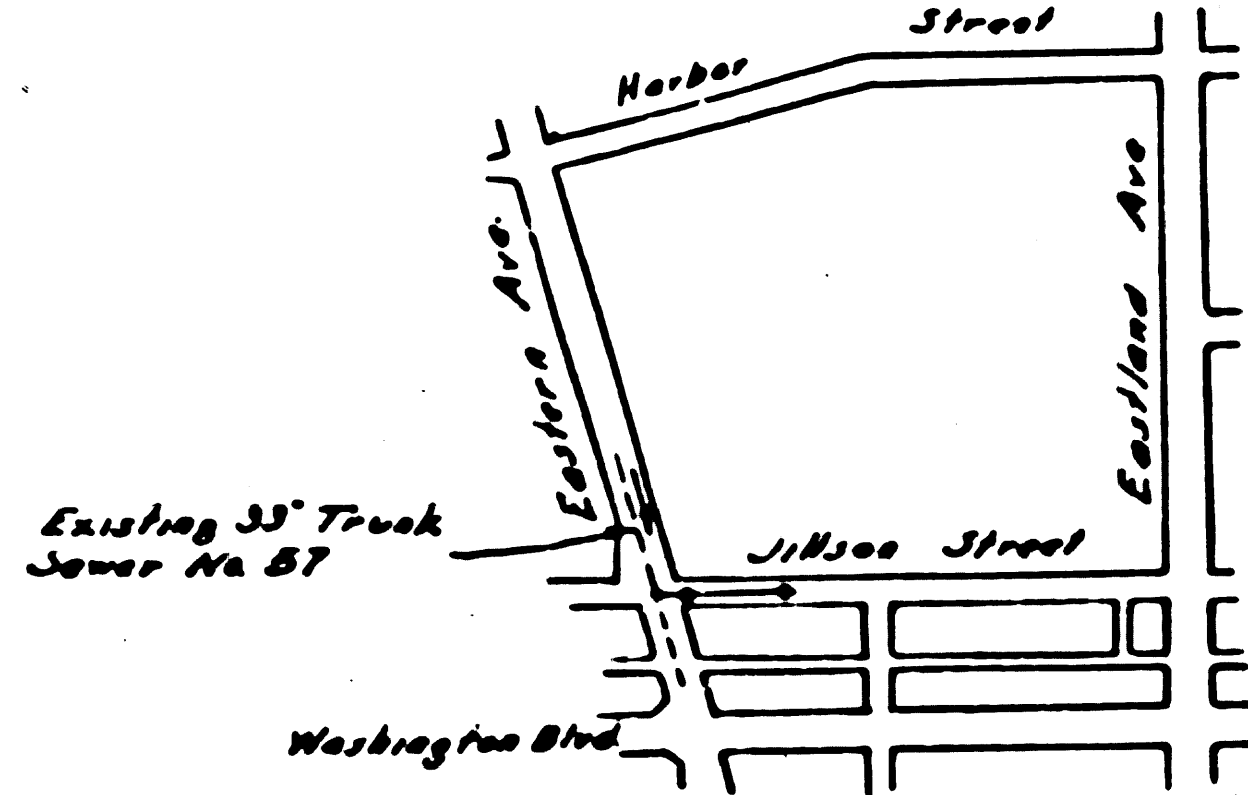
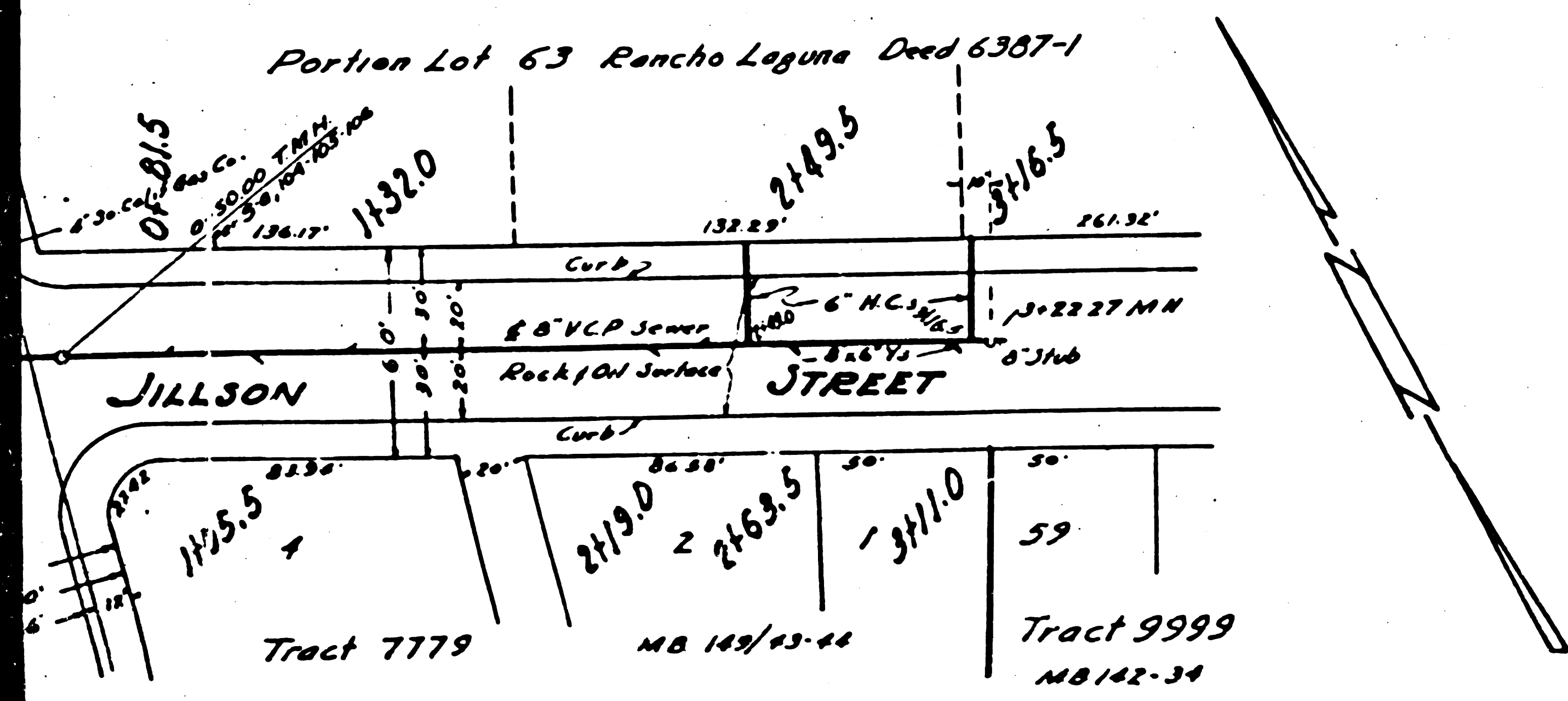
For Legend
See Plan No. S-a-64

Note:
Grades to which this improvement is to be constructed are shown on plans and profile. Grade points for top of curb are shown by circles on profile. At all points between designated points the grade shall be established so as to conform to straight line drawn between said designated points. Elevations are in feet above U.S.C.S. datum or mean sea level.
This drawing and the data hereon are hereby made a part of the specifications. Work shall be constructed according to specifications on file in the office of the County Engineer and shall be prosecuted only in the presence of the County Engineer.
Before work can be started, the contractor must obtain a permit to excavate in County streets from the L.A. County Road Dept. and make a deposit with the County Engineer sufficient to cover the cost of construction, inspection and record plans.

County of Los Angeles, California
APPROVED: Thos. C. Shields
County Engineer
APPROVED: Paul Adams
Chief Engineer of County Sanitation District No. 2



CHECKED BY: Edith M. Smith
Other of County Engineer Reg. C.E. No. 6322



Index Map
PC 1324
JMS:US

20

5-24-35

ACC