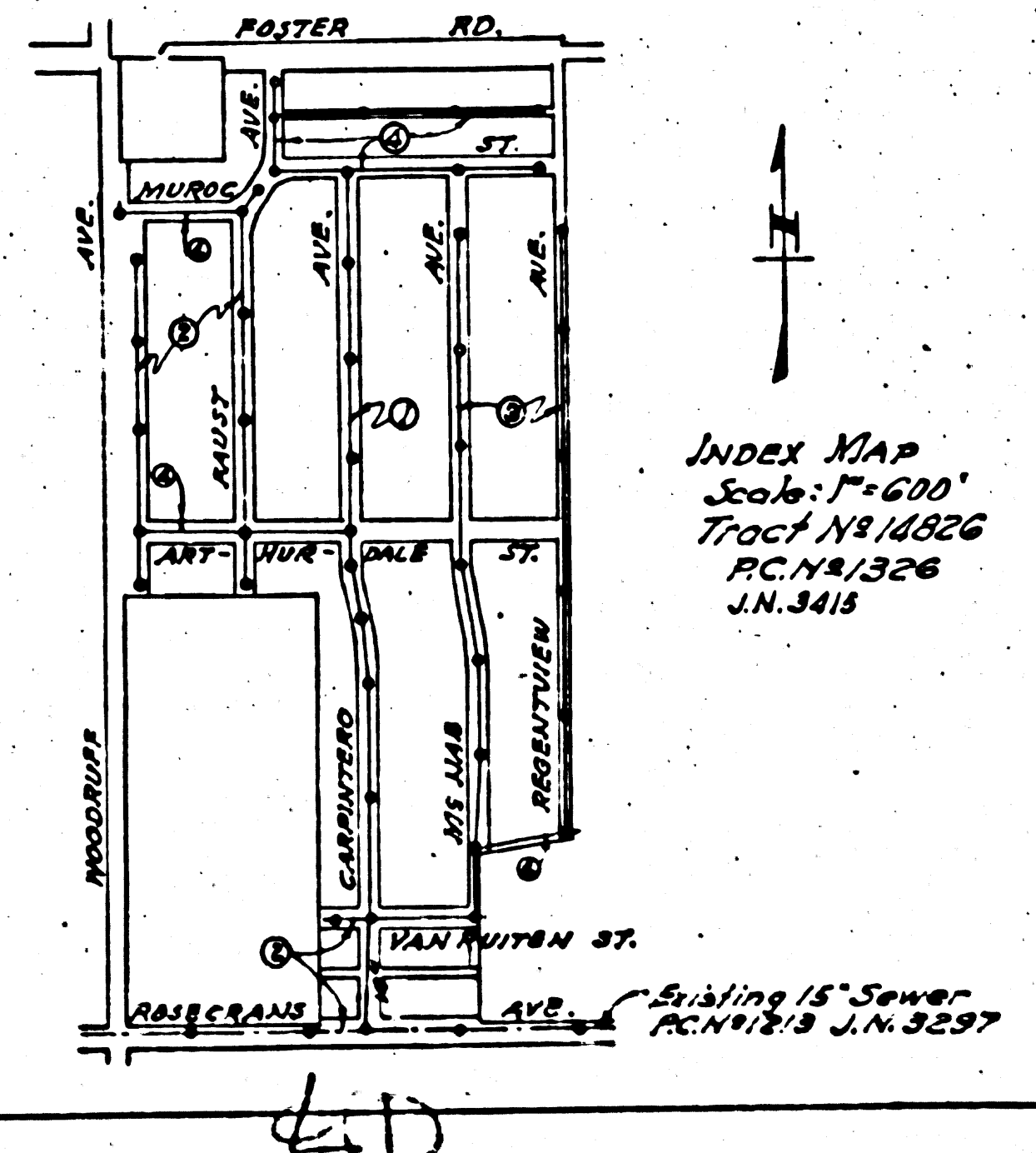
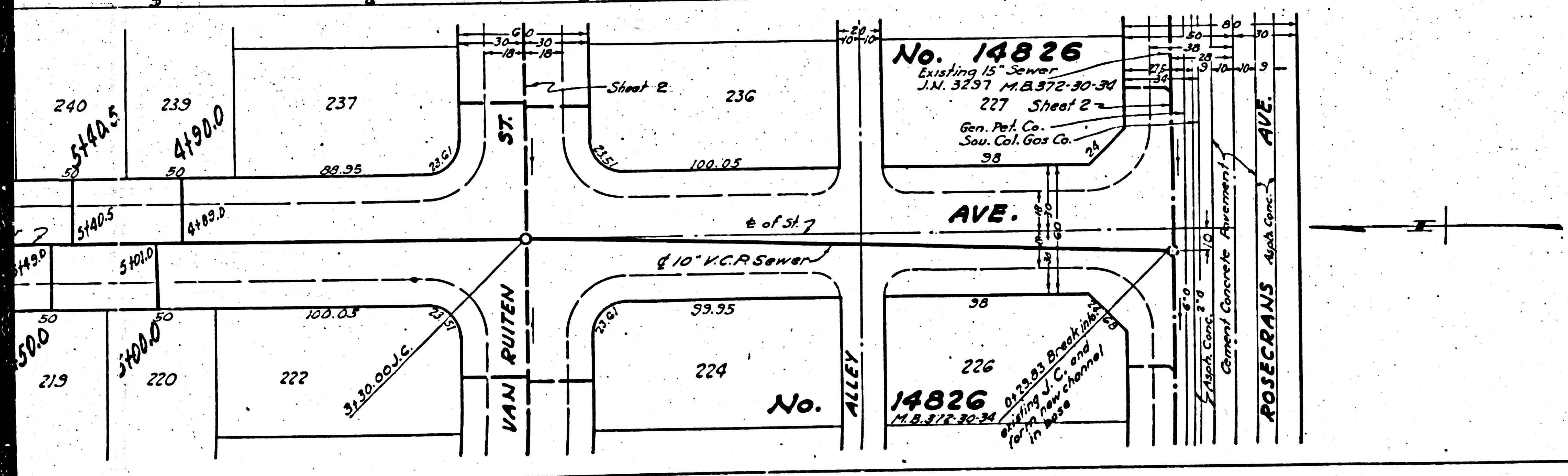


PROFILE ALIGNMENT AND GRADE OF  
**SANITARY SEWERS**  
 TO BE CONSTRUCTED IN  
**CARPINTERO AVE.**  
 BETWEEN ROSEGRANS AVE. & MURROG ST.

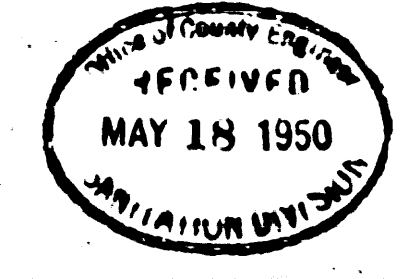
TRACT No. 14826  
 PRIVATE CONTRACT No. 1326  
 W.S. 33  
 SHEET 1 OF 4 SHEETS  
 Scale: Vert. 1"=4'  
 Hor. 1"=40'  
 Mar. 1950  
 PREPARED IN THE OFFICES OF  
**JONES & GILBERT**  
 1700 Wilshire Blvd.  
 Los Angeles, California

1. Use Standard Manhole Frames and Covers, S-a-117
  2. Use Standard Strength Pipe
  3. Use Cement Mortar for all Vitrified Clay Pipe Joints
  4. Resurface all trench within paved area to meet L. A. County Road Dept. requirements according to permit.
  5. Encase four feet of Sewer at points of interference with poles as per Sta. 119
  6. House Connections to be constructed with invert at Property Line 5' below Curb Grade except as noted
  7. All structures shall be Brick Sewer Structures, S-a-104
- Approval of this plan by the County of Los Angeles does not constitute a representation as to the accuracy of the location of, or the existence, or non-existence of, any underground utility, pipe, or structure, within the limits of this project.
- Provide stakes on the Property Lines or Property Lines produced at right angles to the Sewer line of the center line of each Manhole.
- No representative of the County Engineer will survey or lay out any portion of the work. The owner or his authorized representative shall furnish the County Engineer with Grade Stakes and Stations for all House Connections and Y-Transitions and shall provide stakes for Stakes at their proper locations with adjoining property marked. Any change of location shall be requested in writing by the owner or his representative.
- No revisions shall be made in these Plans without approval of the County Engineer.

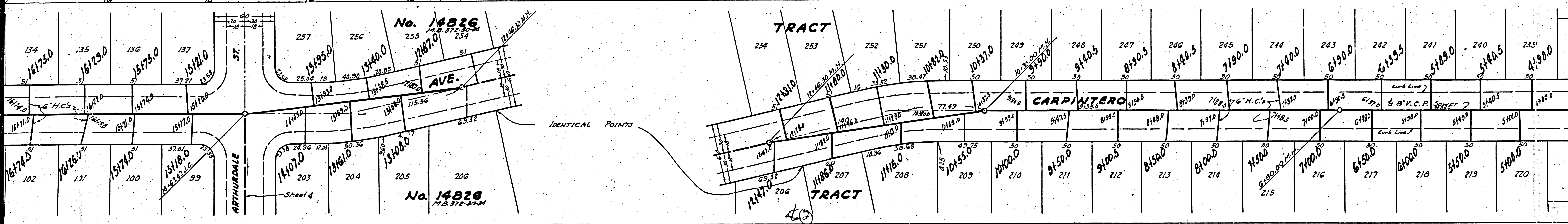
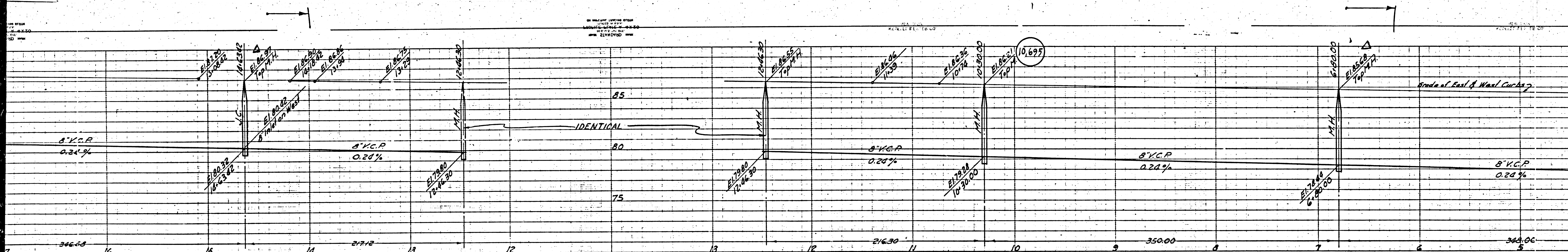


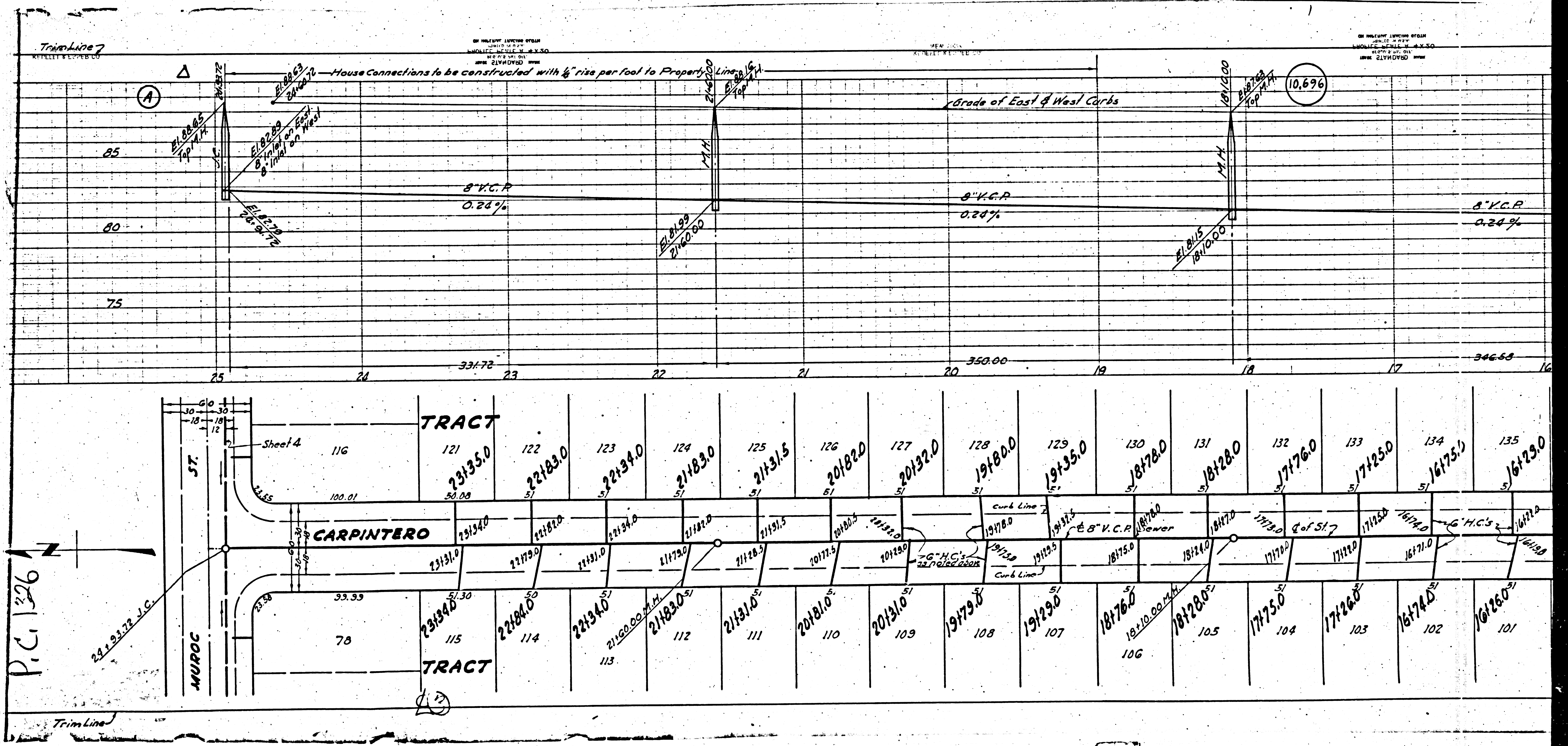
NOTE:  
 Grades to which this improvement is to be constructed are shown on Plans or Profiles. Grade points for top of curb, center line of streets, or center line of alley ways shown by circles on Profiles. At all points between designated points the grade shall be established as in conform to a straight line drawn between said designated points.  
 Elevations are in feet above U.S.G.S. Datum or Mean Sea Level.  
 This drawing and the data hereon are hereby made a part of the specifications.  
 Work shall be constructed according to specifications on file in the office of the County Engineer and shall be prosecuted only in the presence of the County Engineer.  
 Before work can be started the Contractor must obtain a Permit to excavate in County Streets from the L. A. County Road Dept. 211 So. Main St. and make a deposit with the County Engineer, 228 County Engineering Building sufficient to cover the cost of Construction Inspection and Record Plans.

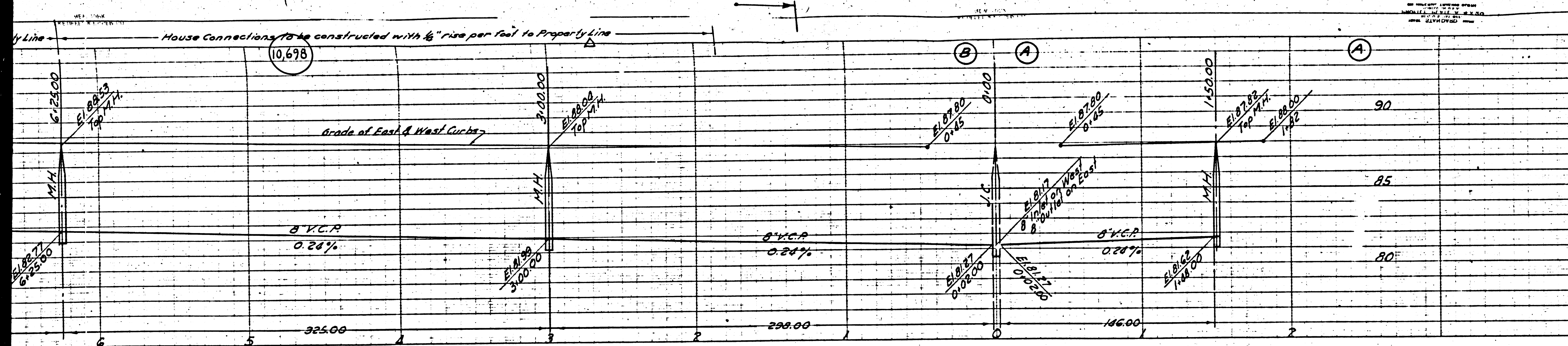
COUNTY OF LOS ANGELES, CALIFORNIA  
 APPROVED: *[Signature]* County Engineer  
 APPROVED: *[Signature]* Chief Engineer, County Sanitation District No. 2  
 CHECKED: *[Signature]* 5-12-1950  
 Office of County Engineers, Bldg. C.E. 2, C.E. 1



Trim Line

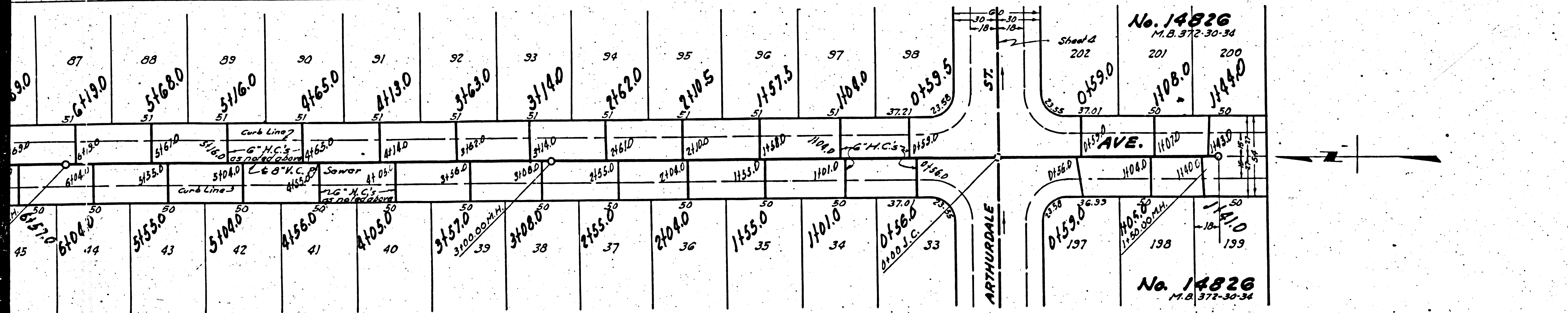






10,677

PROFILE, ALIGNMENT AND GRADE OF  
**SANITARY SEWERS**  
 TO BE CONSTRUCTED IN  
**FAUST AVE.**  
 BETWEEN SOUTHERLY LINE TRACT No. 14826 & A POINT 60' N. OF E. MURROG ST.  
**WOODRUFF AVE.**  
 BETWEEN SOUTHERLY LINE TRACT No. 14826 & MURROG ST.  
**ROSECRANS AVE - VAN RUYTEN ST.**  
 BETWEEN THE EASTERLY & WESTERLY LINES TRACT No. 14826



TRACT No. 14826  
 PRIVATE CONTRACT No. 1326  
 W.S. 33  
 SHEET 2 OF SHEETS  
 Scale: 1/4" = 1'-0" Mar. 1950  
 PREPARED IN THE OFFICES OF  
**JONES & GILBERT**  
 1100 S. Main St.  
 Los Angeles, Calif. 90015  
 FOR LEGEND  
 See Plan No. S-a-64

FOR CONSTRUCTION NOTES SEE SHEET 1

COUNTY OF LOS ANGELES, CALIFORNIA

APPROVED *[Signature]*  
 County Engineer

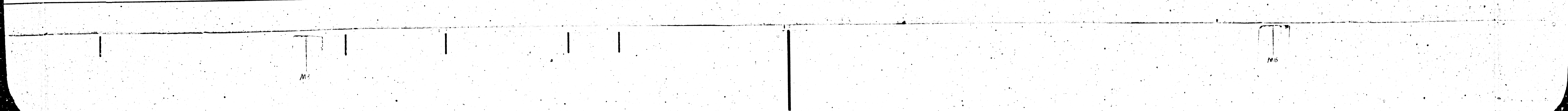
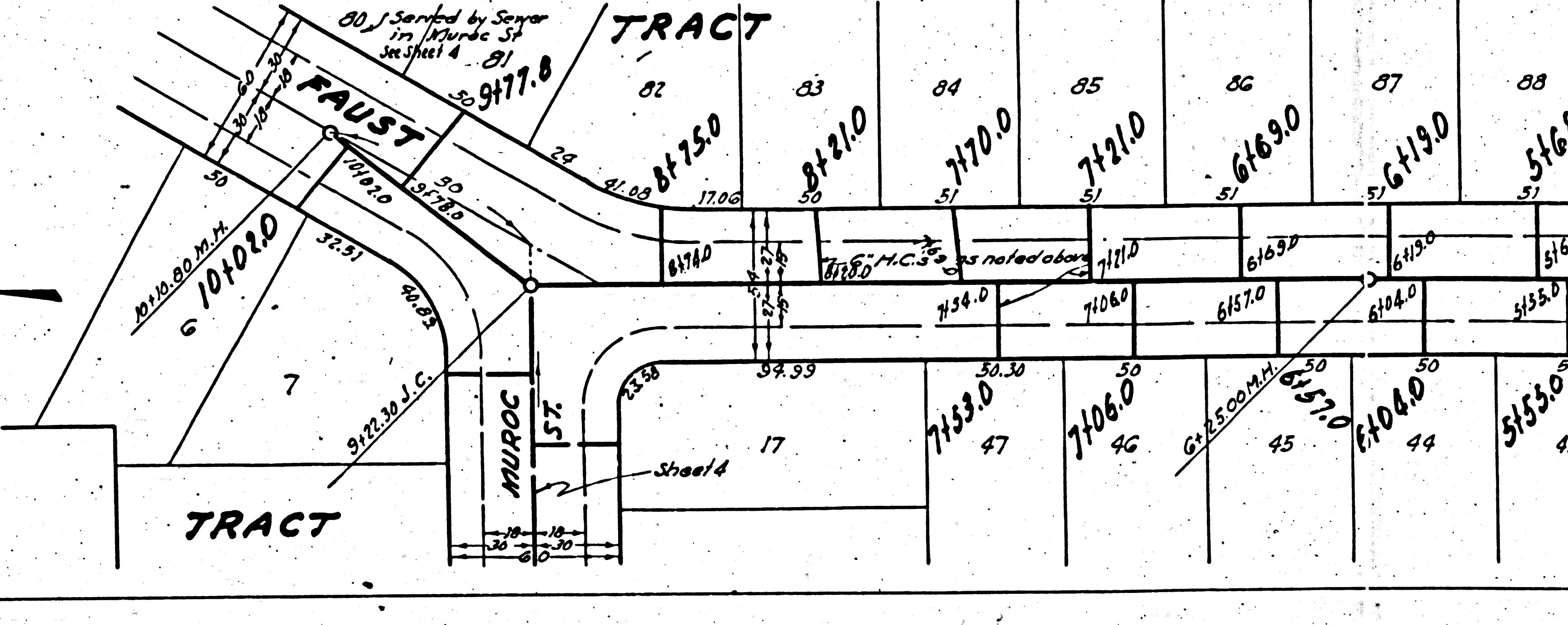
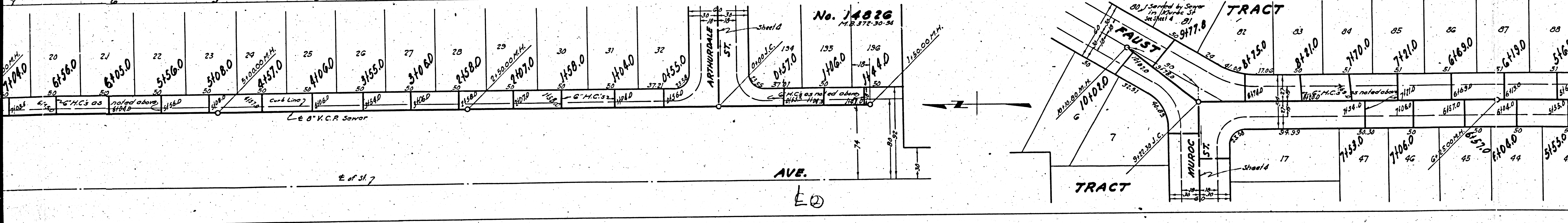
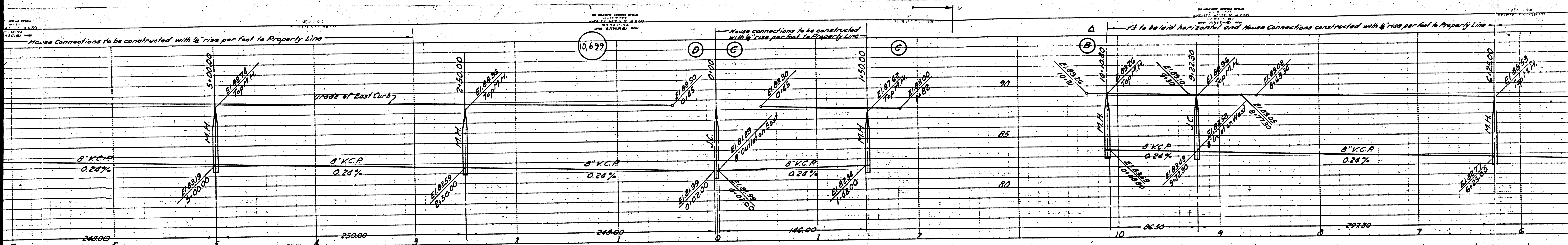
APPROVED *[Signature]*  
 Civil Engineer of County  
 Sanitation District No. 2

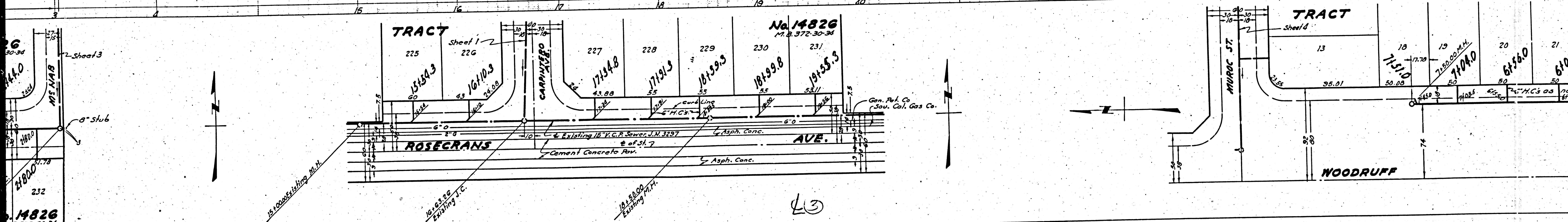
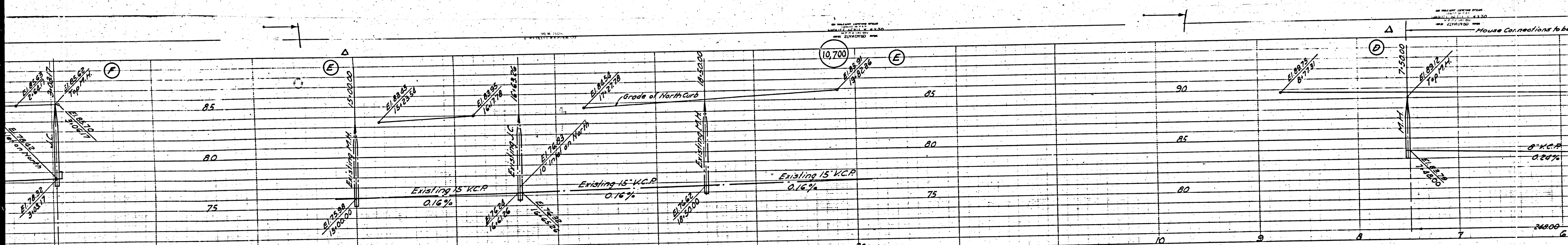
CHECKED *[Signature]* 5-12-1950  
 Office of County Engineer, Reg. C.E. No. 6442

RECEIVED  
 MAY 13 1950  
 SANITATION DISTRICT NO. 2

1359

EO





Sheet 3  
 14826  
 N.P. 372-30-34

**TRACT**  
 No. 14826  
 N.P. 372-30-34

225 15154.3  
 226 16110.3  
 227 17114.8  
 228 17191.3  
 229 18199.3  
 230 18199.8  
 231 19155.3

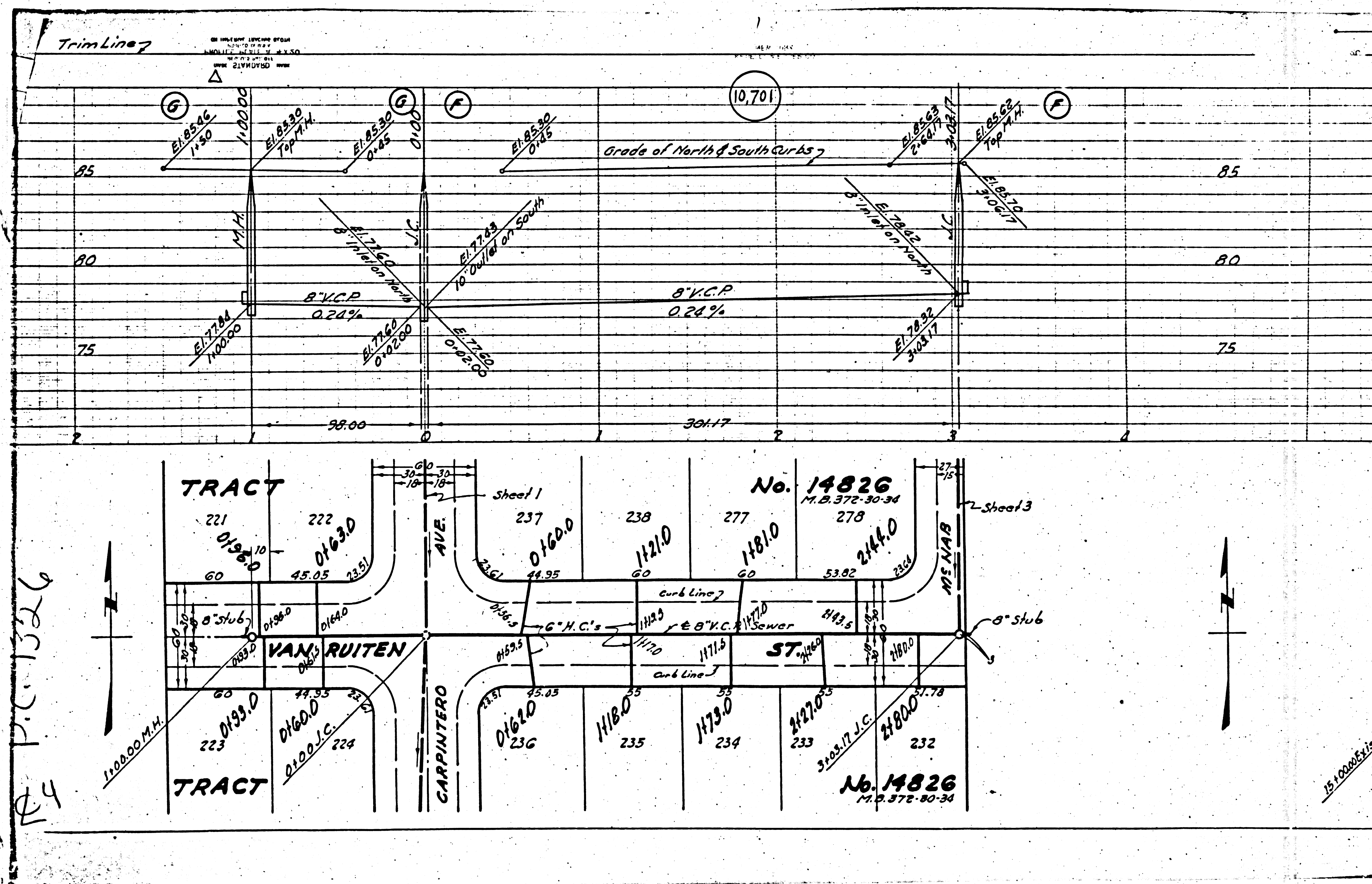
ROSECRANS AVE.  
 Existing 15" V.C.P. Sewer, I.N. 3297  
 Cement Concrete Pav.  
 Asphalt Conc.

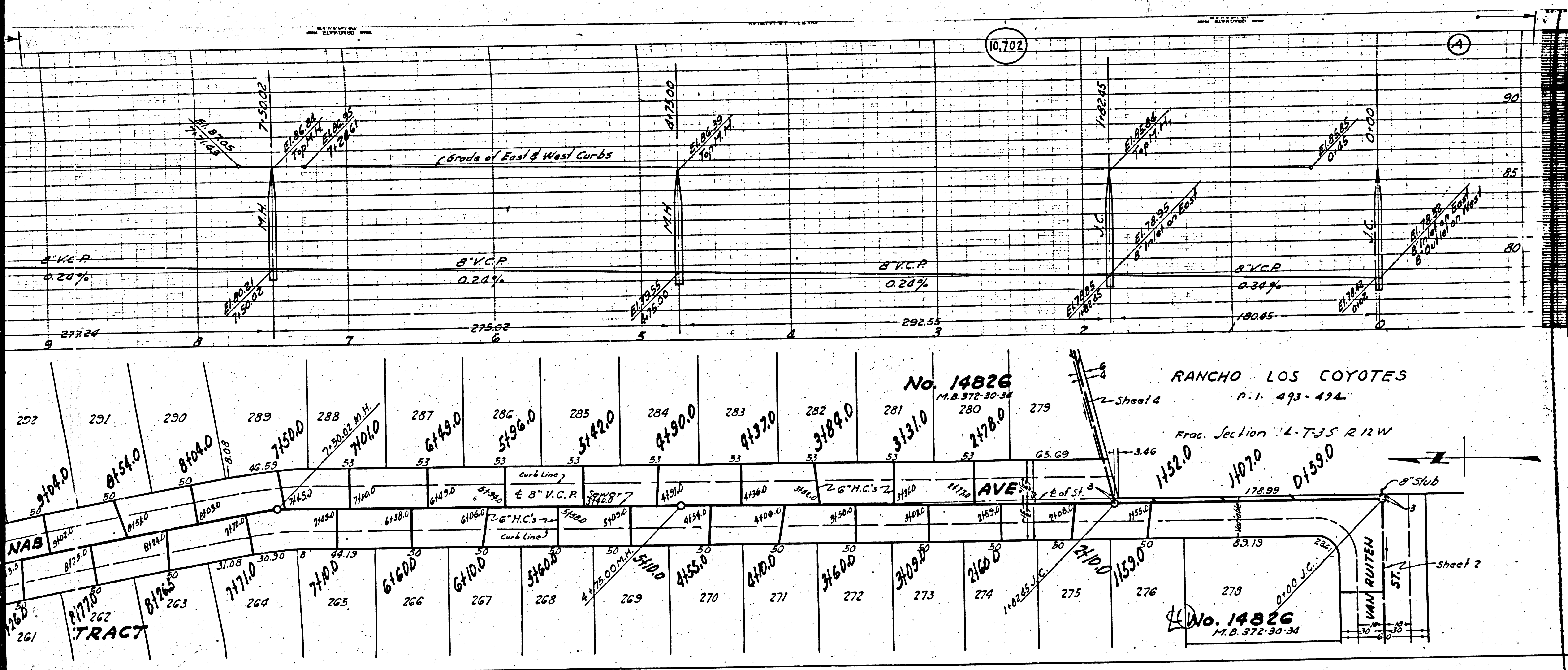
CARPENTER AVE.  
 Existing 15" V.C.P. Sewer  
 Asphalt Conc.

MURAC ST.  
 SHEILD

WOODRUFF

LC3





PROFILE ALIGNMENT AND GRADE OF  
**SANITARY SEWERS**  
 TO BE CONSTRUCTED IN  
**MS NAB AVE.**  
 BETWEEN VAN RUITEN ST. & MUROC ST.  
**REGENTVIEW AVE.**  
 BETWEEN SOUTHERLY LINE TRACT No. 14826 & MUROC ST.

TRACT No. 14826  
 PRIVATE CONTRACT No. 1326  
 W.S. 33  
 SHEET 3 OF 4 SHEETS

Scale: Vert. 1" = 4'  
 Hor. 1" = 40'      Non 1950

PREPARED IN THE OFFICES OF  
**JONES & GILBERT**

*Wm. Gilbert*  
 Reg. C.E. No. 1707  
 FOR LEGEND  
 See Plan No. J-0-64

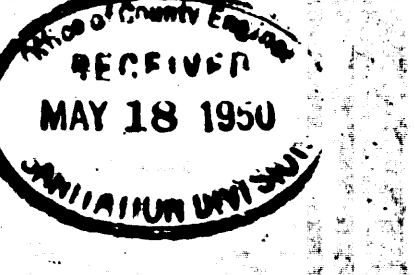
FOR CONSTRUCTION NOTES SEE SHEET 1

COUNTY OF LOS ANGELES, CALIFORNIA

APPROVED *E. Edwards*  
 County Engineer

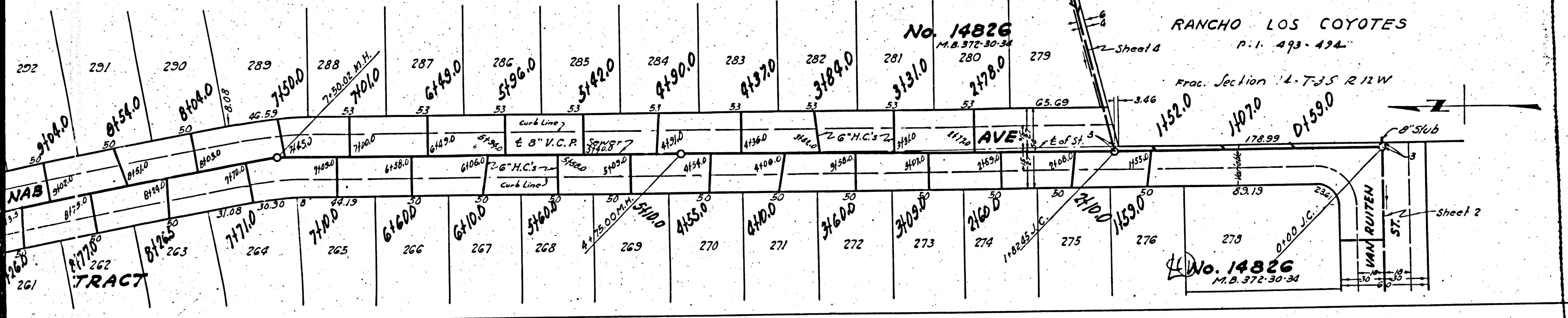
APPROVED *Carl Lamm*  
 Chief Engineer, County  
 Sanitation District No. 2

CHECKED *H.L. Packer* 5-12-1950  
 Office of County Engineer, Reg. C.E. No. 644



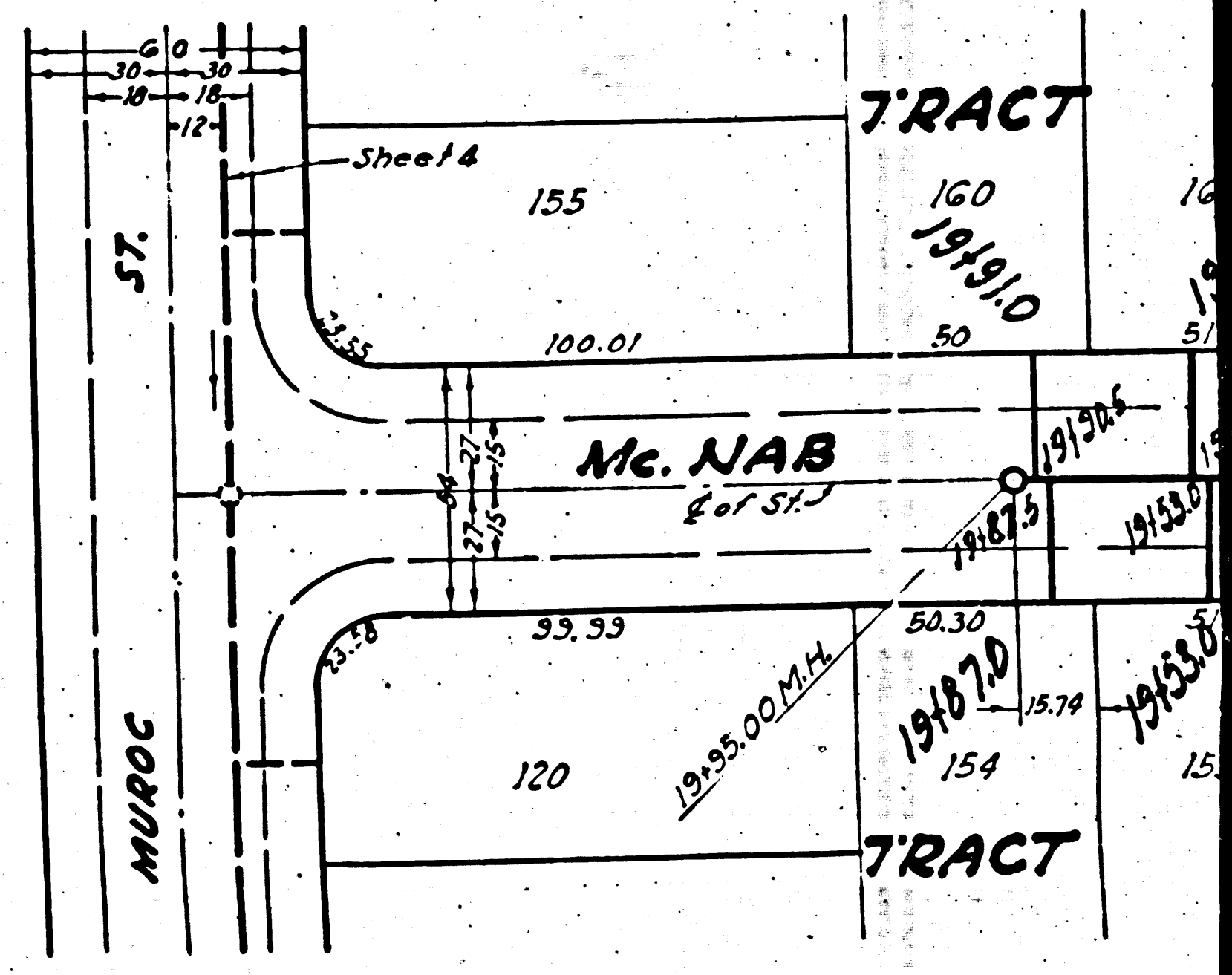
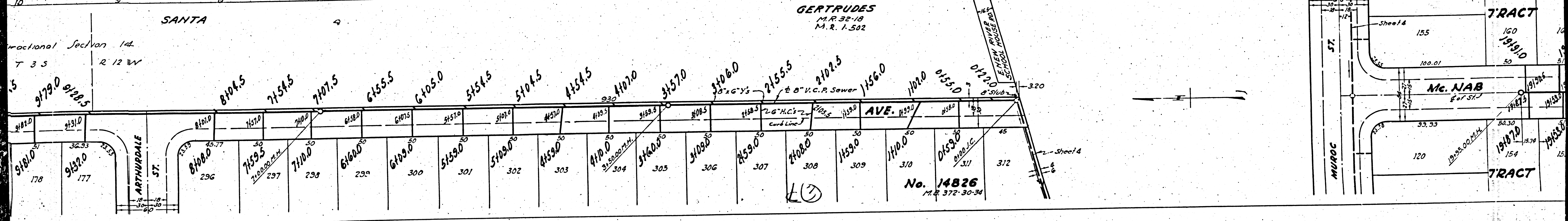
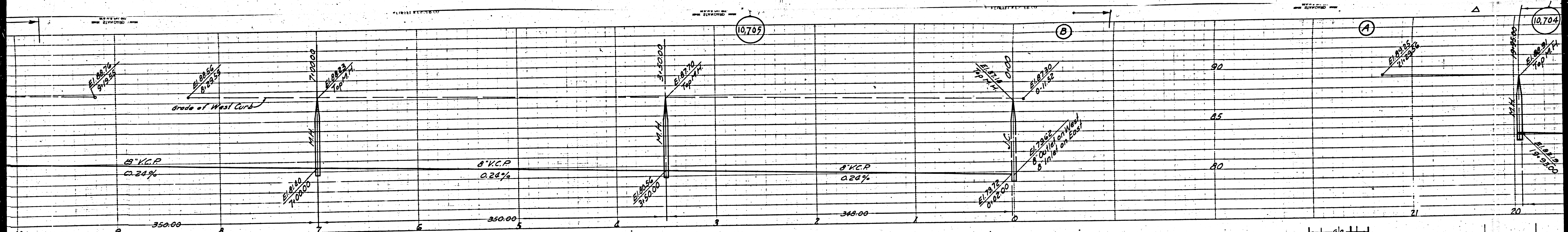
Checked 8-10-50 M. Laven

Trim Line





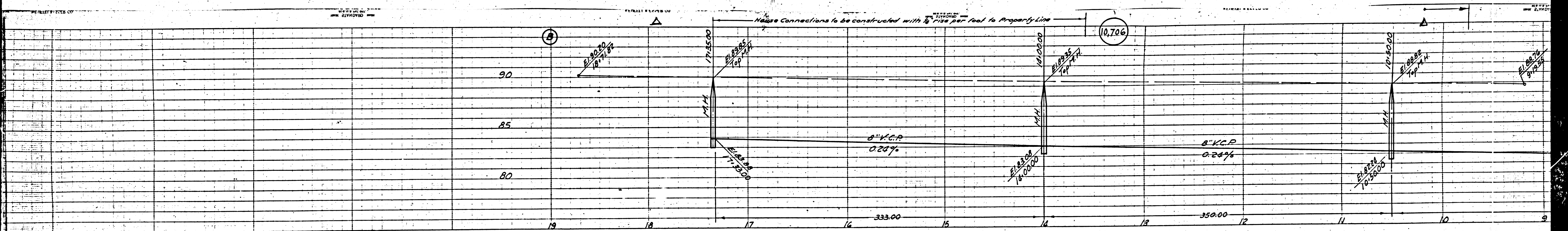




fractional Section 14  
T 3 S R 12 W

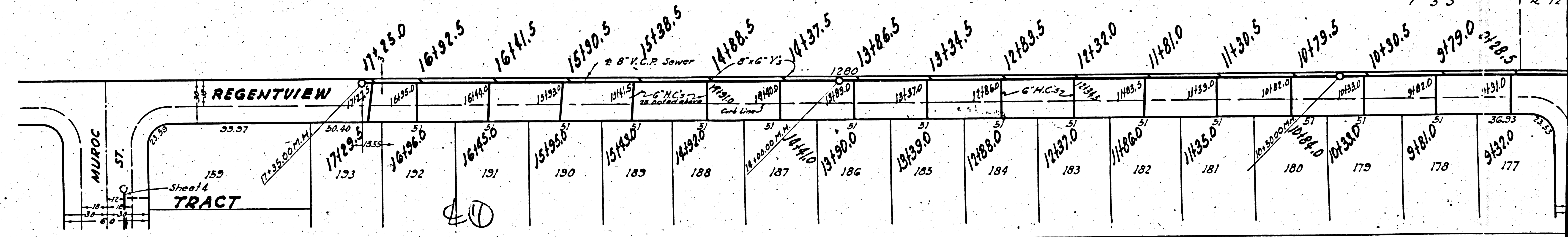
GERTRUDES  
M.R. 32-18  
M.R. 1-502

No. 14826  
M.R. 372-30-34



RANCHO

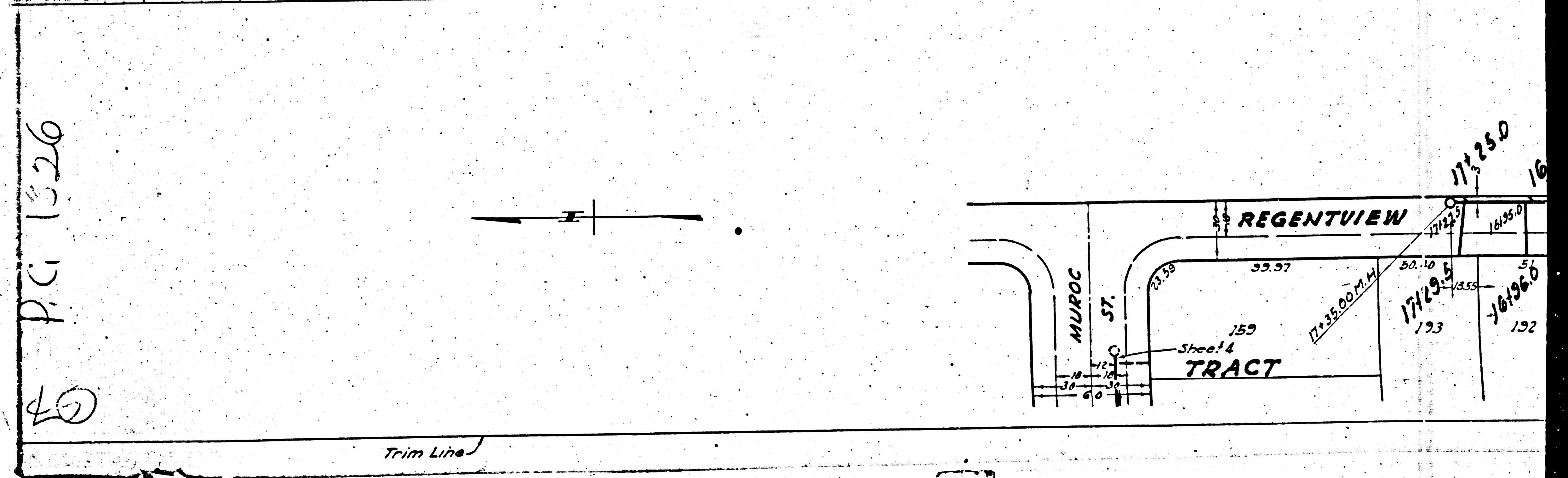
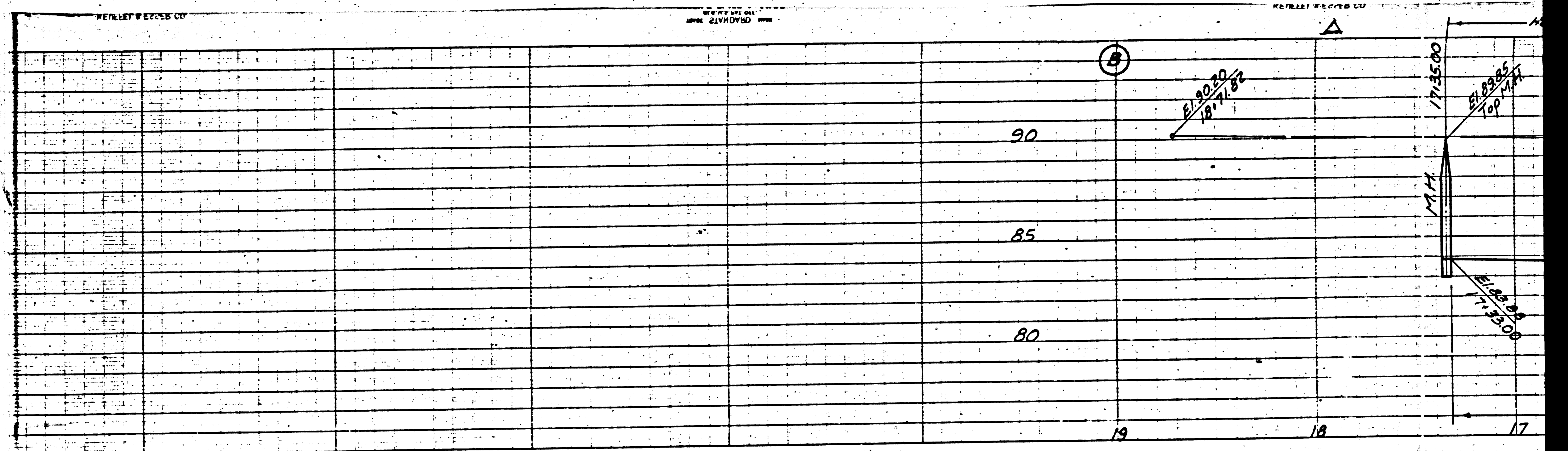
Fractional Section  
T 3 S R 12



Trim Line

M4

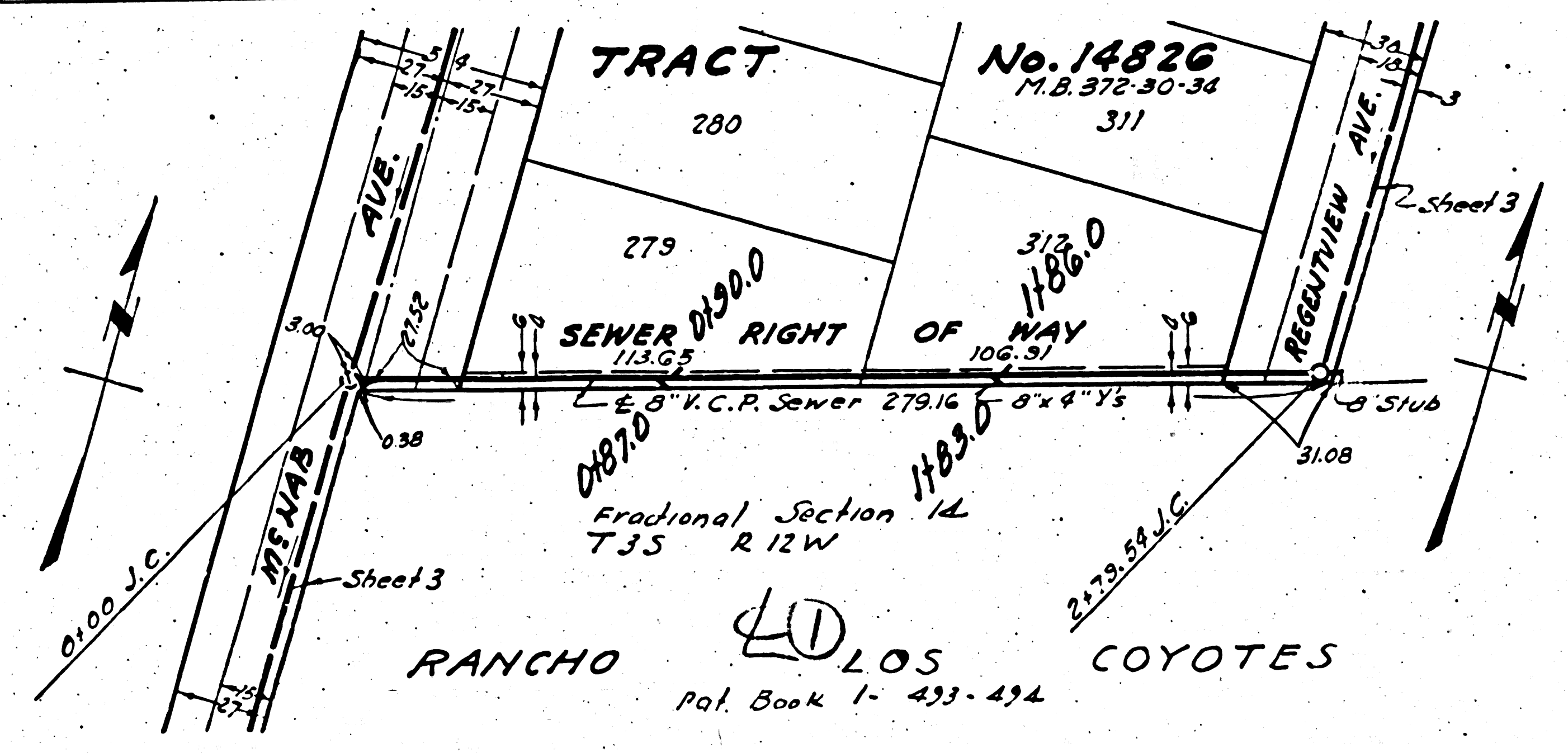
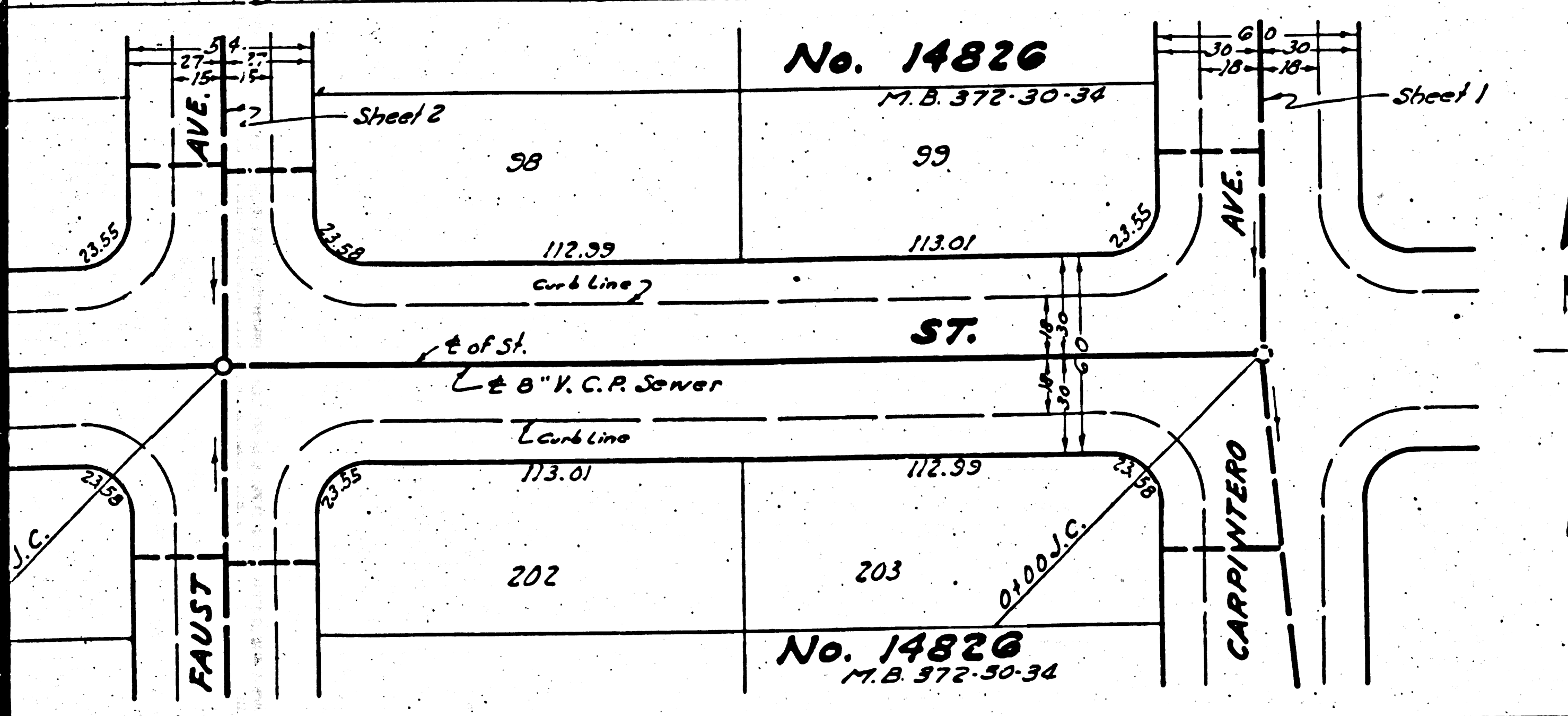
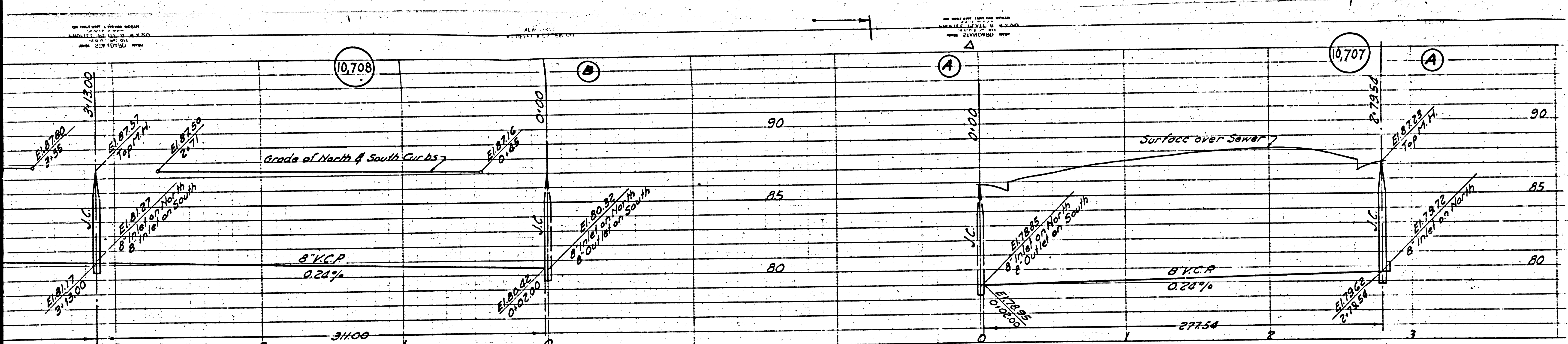
M5



P.C. 1326  
40

Trim Line

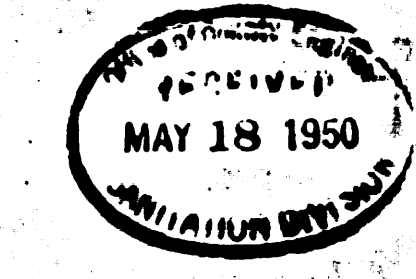
17125.0  
16



PROFILE, ALIGNMENT AND GRADE OF  
**SANITARY SEWERS**  
 TO BE CONSTRUCTED IN  
**SEWER RIGHT OF WAY**  
 IN LOTS 279 & 312, TRACT No. 14826  
**ARTNURDALE ST.**  
 BETWEEN CARPINTERO AVE. & WOODRUFF AVE.  
**MUROC ST. - FIRST ALLEY SOUTH OF FOSTER RD.**  
 BETWEEN REGENTVIEW AVE. & FAUST AVE.  
**MUROC ST.**  
 BETWEEN FAUST AVE. & WOODRUFF AVE.  
**FAUST AVE.**  
 BETWEEN MUROC ST. & FOSTER RD.  
 TRACT No. 14826  
 PRIVATE CONTRACT No. 1326  
 W.S. 33  
**SHEET 4 OF 4 SHEETS**  
 Scale: 1" = 40'  
 PREPARED IN THE OFFICES OF  
**JONES & GILBERT**  
 Reg. C.E. No. 1707  
 FOR LEGEND  
 See Plan No. S-a-64

FOR CONSTRUCTION NOTES SEE SHEET 1

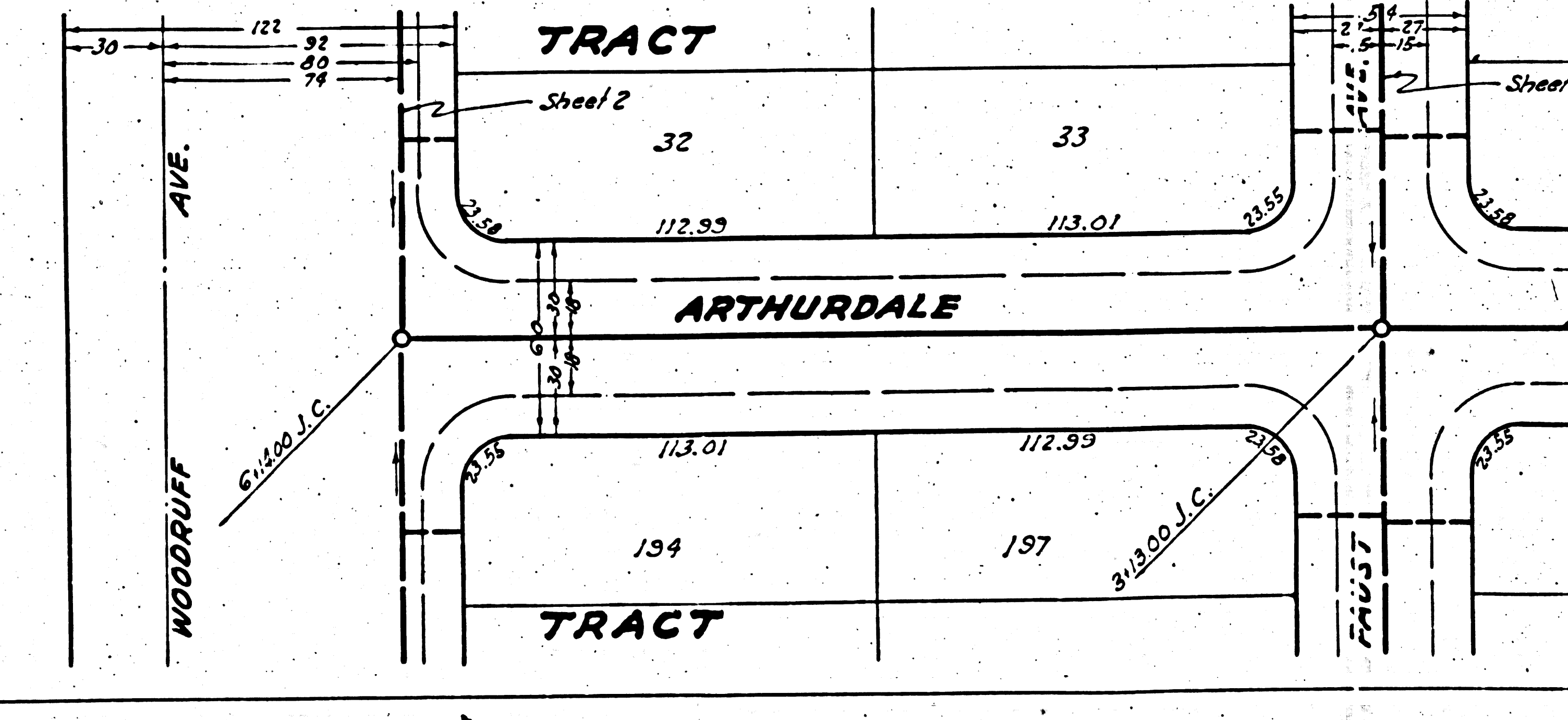
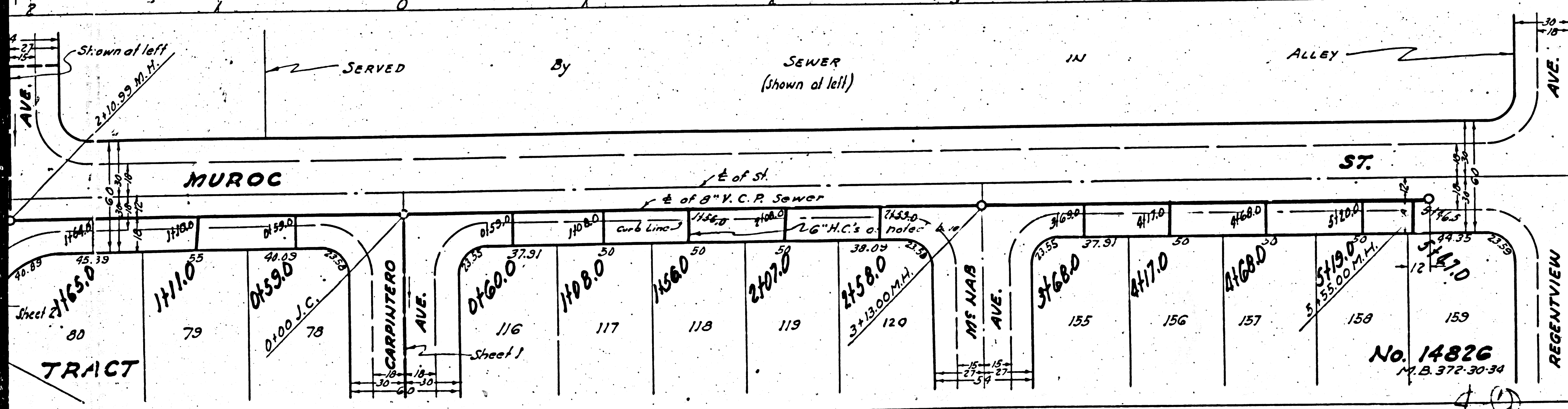
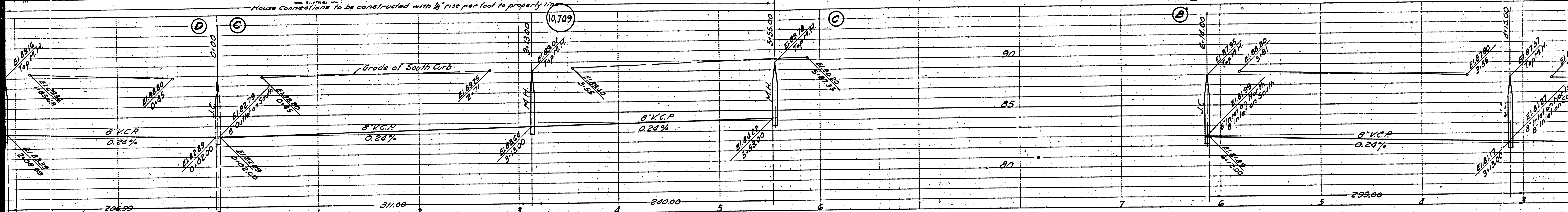
COUNTY OF LOS ANGELES, CALIFORNIA  
 APPROVED *[Signature]*  
 County Engineer  
 APPROVED *[Signature]*  
 Chief Engineer of County  
 Sanitation District No. 2  
 CHECKED *[Signature]*  
 Office of County Engineer, Reg. C.E. No. 4912

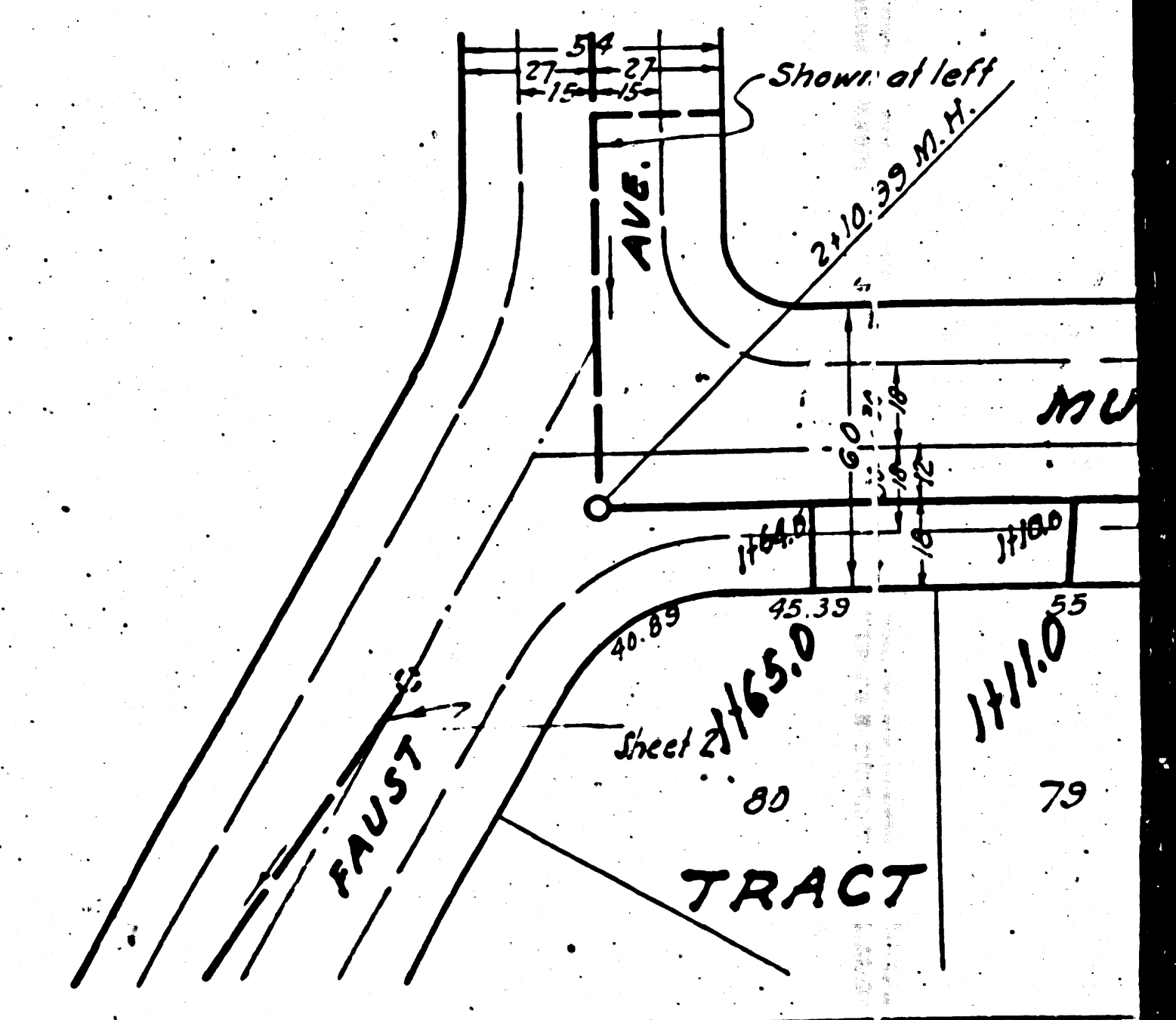
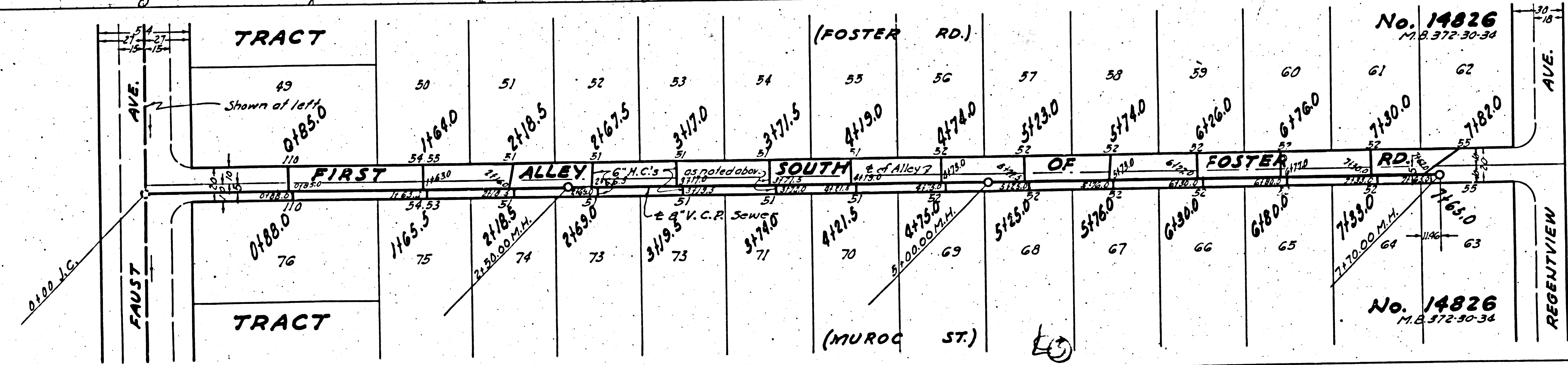
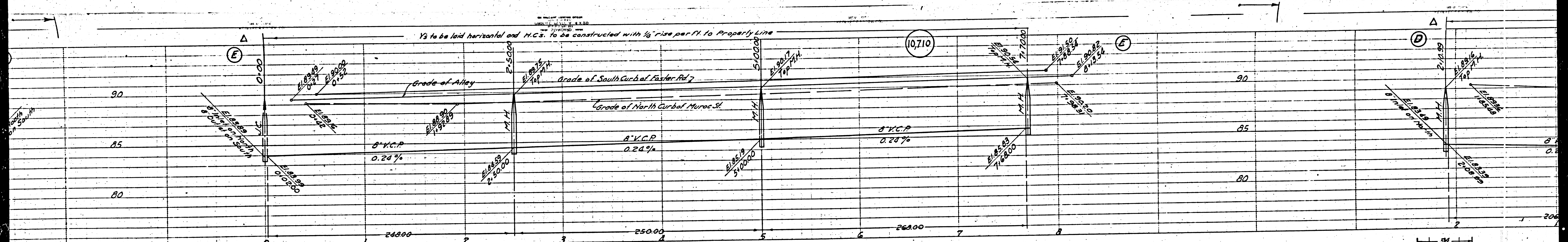


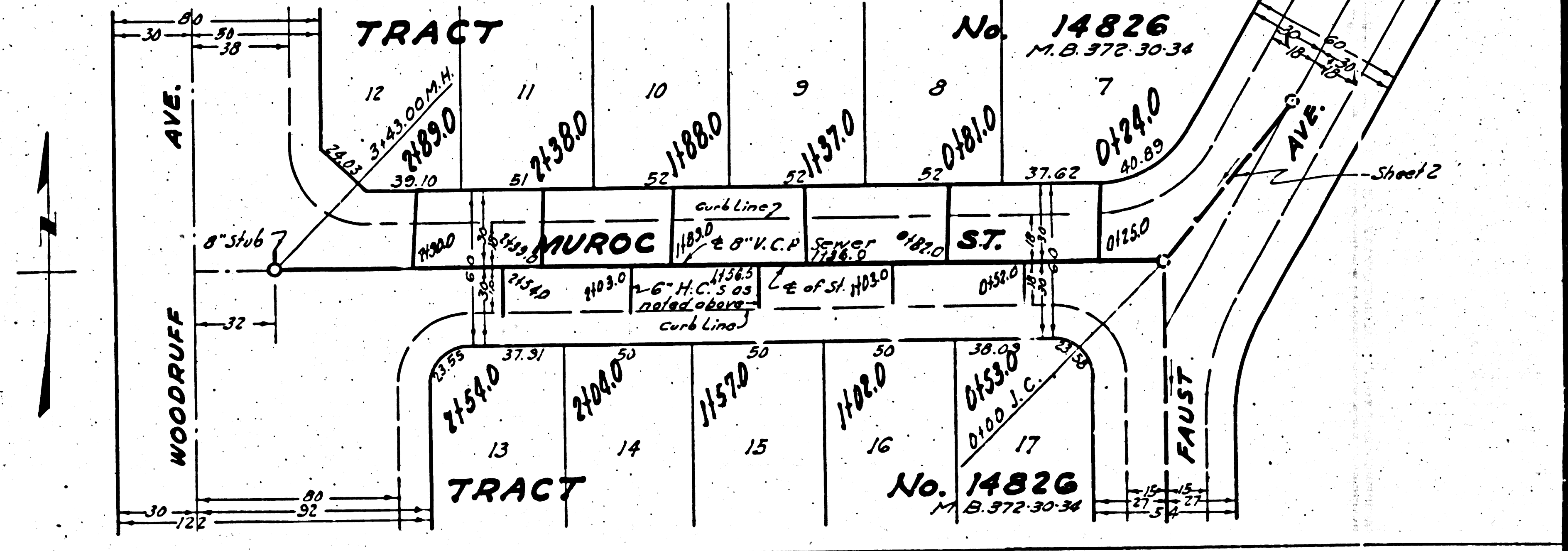
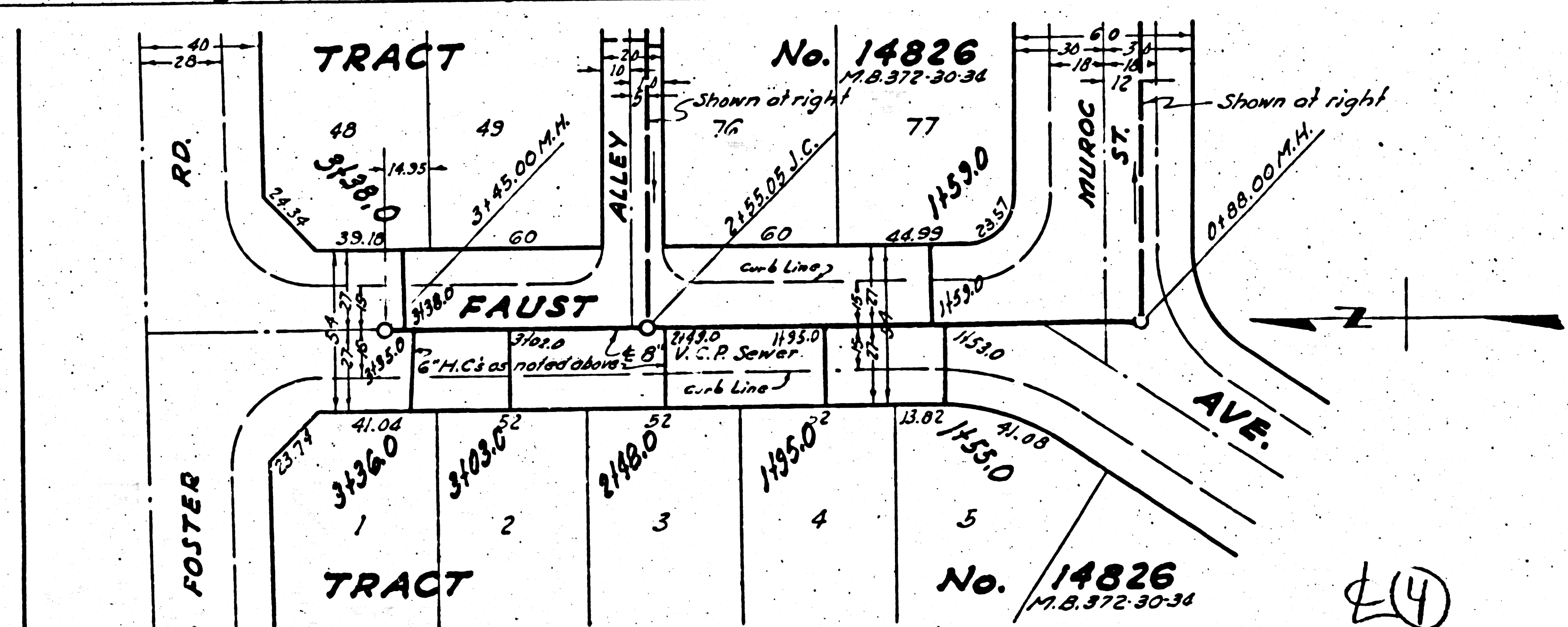
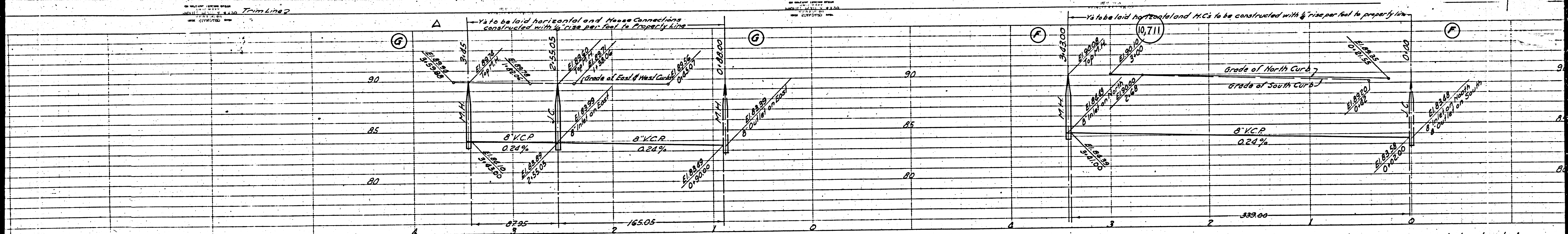
dated 8-10-50 [Signature]

10350  
 BC 1350

House connections to be constructed with 1/8" rise per foot to property line







Trim Line