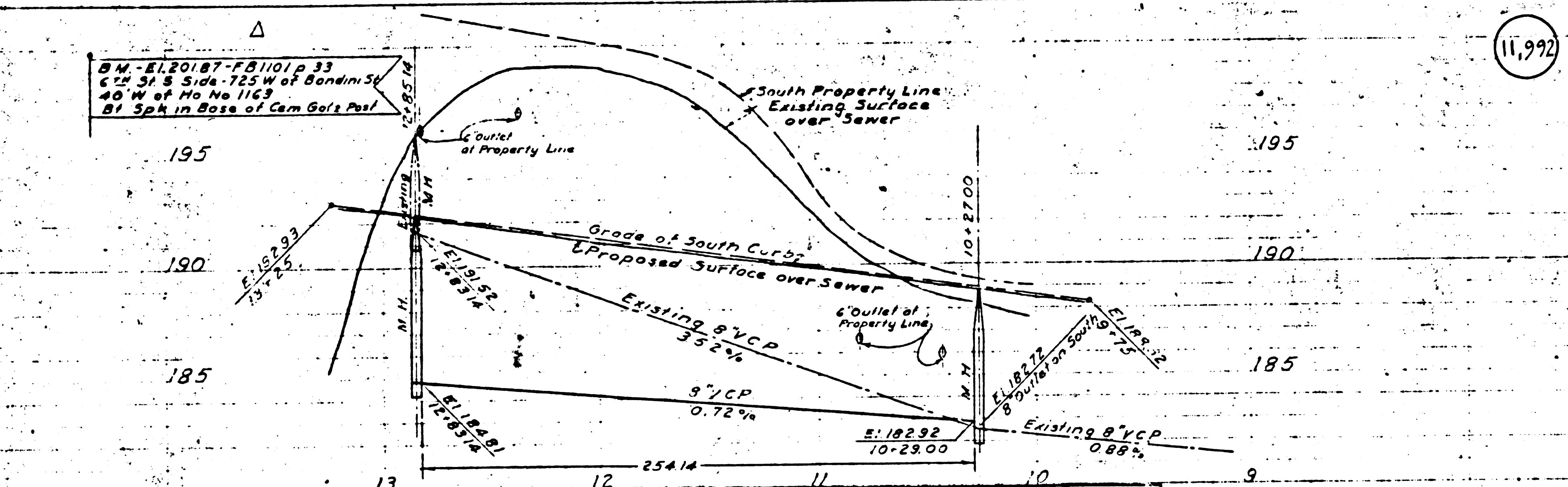


P.C. 1337

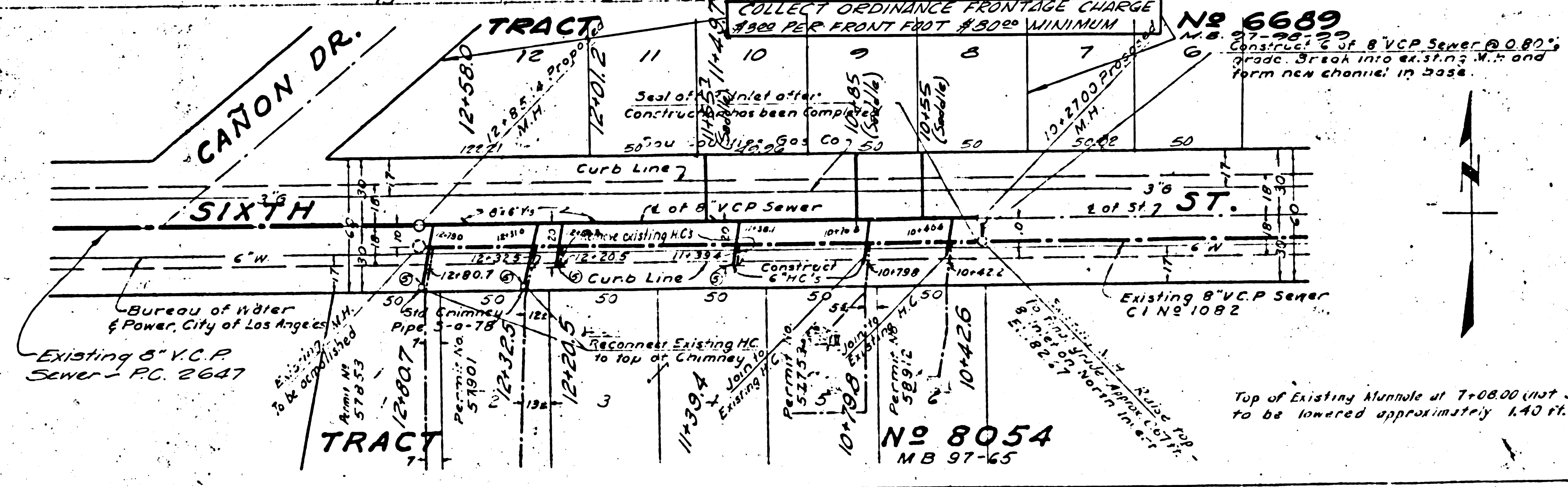
11,992

B.M. - E120187 - F81101 p 33
6' 2" S of Side - 725 W of Bandini St
40' W of No No 1163
81 3/4" in Base of Cam Golf's Post

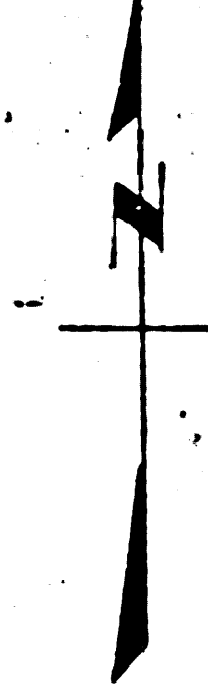
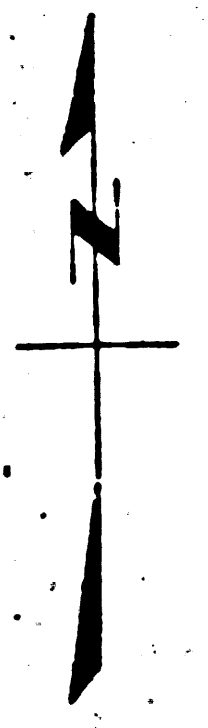


- USE STANDARD STRENGTH PIPE
- USE CEMENT MORTAR FOR ALL VITRIFIED CLAY PIPE JOINTS
- ALL STRUCTURES SHALL BE BRICK SEWER STRUCTURES AS PER PLAN NO. S-104
- USE STANDARD MANHOLE FRAMES AND COVERS AS PER PLAN NO. S-117 EXCEPT AS NOTED BELOW
- FIGURES IN CIRCLES AT END OF HOUSE CONNECTION INDICATE DEPTH BELOW CURB GRADE
- EXISTING MANHOLES AT STATIONS 10+23.00 AND 11+08.00 (NOT SHOWN) ARE TO BE ADJUSTED TO GRADE. CAST IRON FRAME AND COVERS WILL BE FURNISHED AND SET BY THE SEWER MAINTENANCE SECTION OF THE COUNTY ENGINEER.
- ADJUST SEWER MAINTENANCE SECTION OF COUNTY ENGINEER WHEN READY. ALL RECONSTRUCTION OF BRICK WORK ON EXISTING MANHOLES TO BE DONE BY CONTRACTOR.
- SEWER SERVICE IS TO BE MAINTAINED TO EXISTING HOUSE CONNECTIONS DURING CONSTRUCTION.

COLLECT ORDINANCE FRONTAGE CHARGE \$800 PER FRONT FOOT \$500 MINIMUM



P.C. 1337



20

Trim Line