

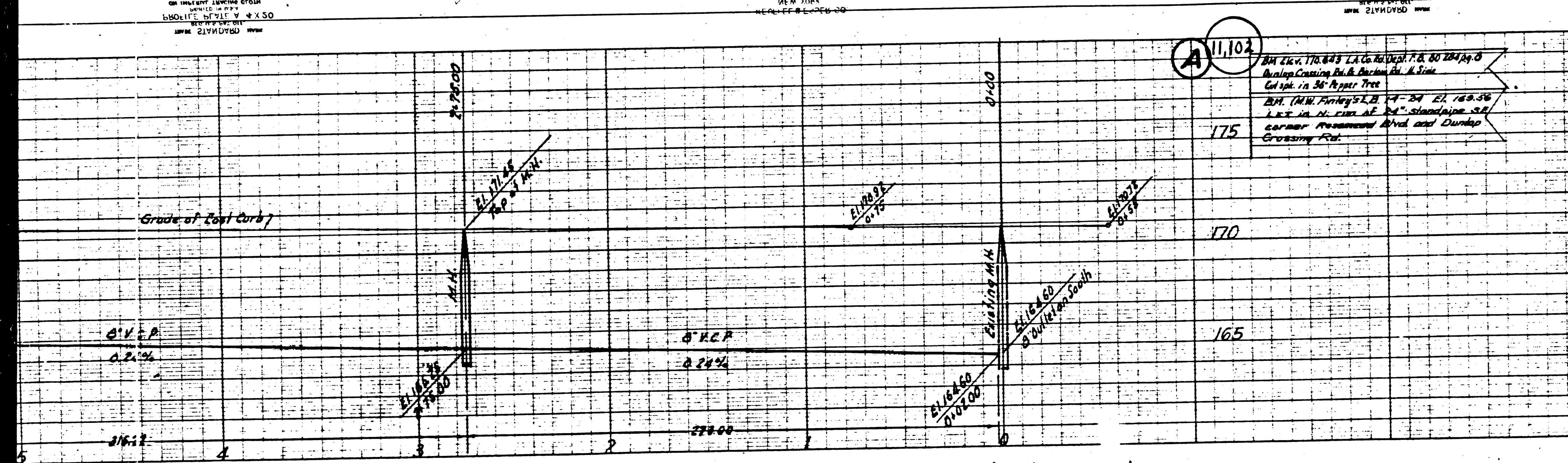
© 1914 THE LITTLE ENGINE CO. INC.
 LOS ANGELES, CALIF. U.S.A.
 MADE IN U.S.A.

VEN. 1174
 11/17/50

© 1914 THE LITTLE ENGINE CO. INC.
 LOS ANGELES, CALIF. U.S.A.
 MADE IN U.S.A.

© 1914 THE LITTLE ENGINE CO. INC.
 LOS ANGELES, CALIF. U.S.A.
 MADE IN U.S.A.

Trim Line



1. THE STANDARD MANHOLE FRAMES AND COVERS SHALL BE:
A. THE STANDARD STRENGTH TYPE (EXCEPT AS NOTED);
B. MANHOLE FRAMES SHALL BE ALL-CAST-IRON OR ALL-STEEL;
C. MANHOLE COVERS SHALL BE ALL-CAST-IRON OR ALL-STEEL;
D. ALL TRENCHES WITHIN PAVED AREAS TO REST ON APPROVED CONCRETE
FOOTING OR CONCRETE "V" TYPE-CONCRETE-CONCRETE.
E. CONCRETE HOUSE CONNECTIONS WITH INVERT AT PROPERTY LINE (S) SHALL
BE LOW DOWN TO THE INVERT OF HOUSE;
F. MANHOLE BOXES SHALL BE SET AT POINTS OF INTERFERENCE WITH FOUND
AS PER PLAN.
G. ALL STRUCTURES SHALL BE BUILT UPON STRUCTURAL STEEL.
H. CONCRETE TOPS OF ALL STRUCTURES IN BUILT UP AREAS SHALL BE ABOVE
FINISHED GRADE.

NOTE: NO REPRESENTATIVE OF THE COUNTY ENGINEER WILL SURVEY OR LAYOUT ANY PORTION OF THIS WORK.
 THE OWNER OR HIS AUTHORIZED REPRESENTATIVE SHALL FURNISH THE
 NECESSARY DATA WITH GRADE SHEETS AND STATIONS OF ALL HOUSE CONNECTIONS
 TOWARD THE MANHOLES AND MANHOLES SHALL BE BUILT TO THE SAME ELEVATION
 LOCATIONS WITH STATIONS PLAINLY MARKED, ANY CHANGE IN LOCATION SHALL
 BE INDICATED IN WRITING BY THE OWNER OR HIS REPRESENTATIVE.
 PROTECT GRADES ON THE PROPERTY BORN OR PROPERTY LINE PROVISION
 AS SHOWN HEREON SO THE SAME LINE OF THE PROPERTY LINE OF THE PROPERTY
 NO REVISIONS SHALL BE MADE IN THESE PLANS WITHOUT APPROVAL OF
 THE COUNTY ENGINEER.

**PROFILE ALIGNMENT AND GRADE OF
 SANITARY SEWERS
 TO BE CONSTRUCTED IN
 COFFMAN AND PICO ROAD
 BETWEEN HOLBROOK STREET AND SOUTH LINE OF TR. 16274
 LAS TOROS AVENUE
 DULIN AVENUE
 CALICO AVENUE
 TOWNLEY DRIVE
 BETWEEN CALICO AVENUE AND CALICO ALL METERS
 HOLBROOK STREET
 BETWEEN COFFMAN ROAD AND SOUTH LINE OF TR. 16274
 TRACT NO. 16274**

**PRIVATE CONTRACT No. 1345
 7-4-50**

SHEET 1 OF 2 SHEETS

SCALE: VERT. 1"=4'
 HORIZ. 1"=40'

PREPARED IN THE OFFICES OF
LEON W. MOORE
 or **Leon W. Moore**
 REG. ENR. NO. 3157

FOR LEGEND

GRADE TO WHICH THIS IMPROVEMENT IS TO BE CONSTRUCTED ARE SHOWN
 IN PLANS AND PROFILES.
 GRADE POINTS FOR TOP OF CURB, CENTER LINE OF STREET OR CENTER LINE
 OF ROAD, AS SHOWN BY DIMENSION PROFILES, AT ALL POINTS BETWEEN THE
 POINTS TO BE SHOWN SHALL BE ESTABLISHED AS TO CORRESPOND TO A
 GRADE LINE DETERMINED BY THE COUNTY ENGINEER.
 ELEVATIONS ARE IN FEET ABOVE MEAN SEA LEVEL.
 SPECIFICATIONS
 WORK SHALL BE CONSTRUCTED ACCORDING TO SPECIFICATIONS ON FILE IN
 THE OFFICE OF THE COUNTY ENGINEER AND SHALL BE PROSECUTED ONLY BY THE
 COUNTY ENGINEER.
 BEFORE WORK CAN BE STARTED THE CONTRACTOR MUST OBTAIN A PERMIT
 TO BURN FROM THE COUNTY ENGINEER'S OFFICE IN THE COUNTY ROAD DEPARTMENT
 TO BURN FROM THE COUNTY ENGINEER'S OFFICE IN THE COUNTY ROAD DEPARTMENT.
 COUNTY ENGINEERING BUILDING, 100 SOUTH MAIN STREET, LOS ANGELES, CALIF.
 IF WORK IS TO BE DONE IN A STATE HIGHWAY A PERMIT MUST BE OBTAINED
 FROM THE STATE OF CALIFORNIA, CIVIL ENGINEER, 100 SOUTH MAIN STREET,
 LOS ANGELES, CALIF.
 APPROVAL OF THIS PLAN BY THE COUNTY OF LOS ANGELES DOES NOT IMPLY
 ANY GUARANTEE AS TO THE ACCURACY OF THE DATA OR THE LOCATION OF THE
 STRUCTURE OR THE EXISTENCE OF ANY UNDERGROUND UTILITY PIPE OR STRUCTURE
 WITHIN THE LIMITS OF THIS PROJECT.

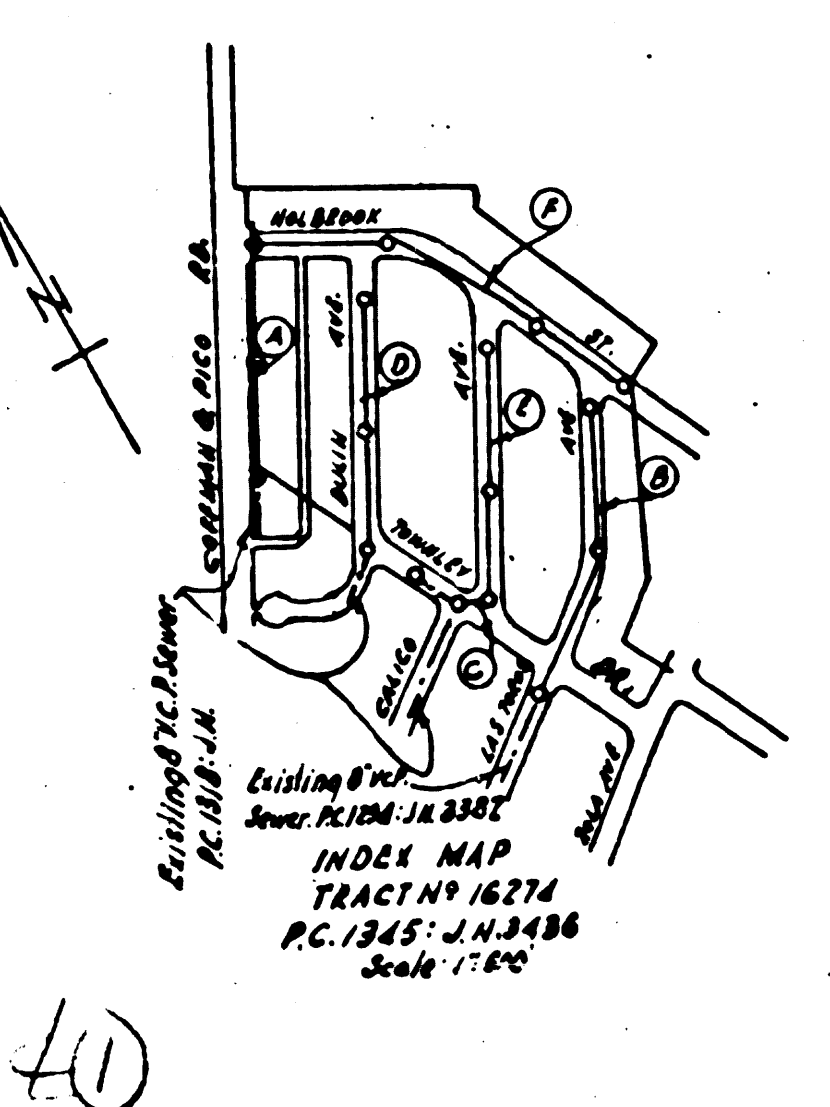
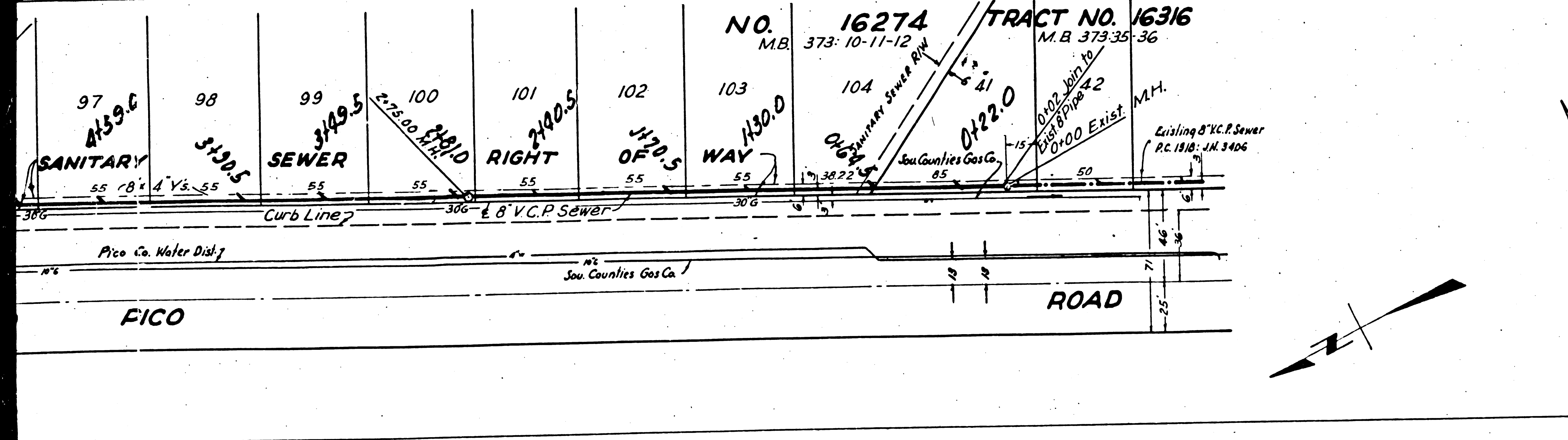
COUNTY OF LOS ANGELES, CALIFORNIA

APPROVED: **Edmund**
 COUNTY ENGINEER

APPROVED: **Robert**
 COUNTY ENGINEER

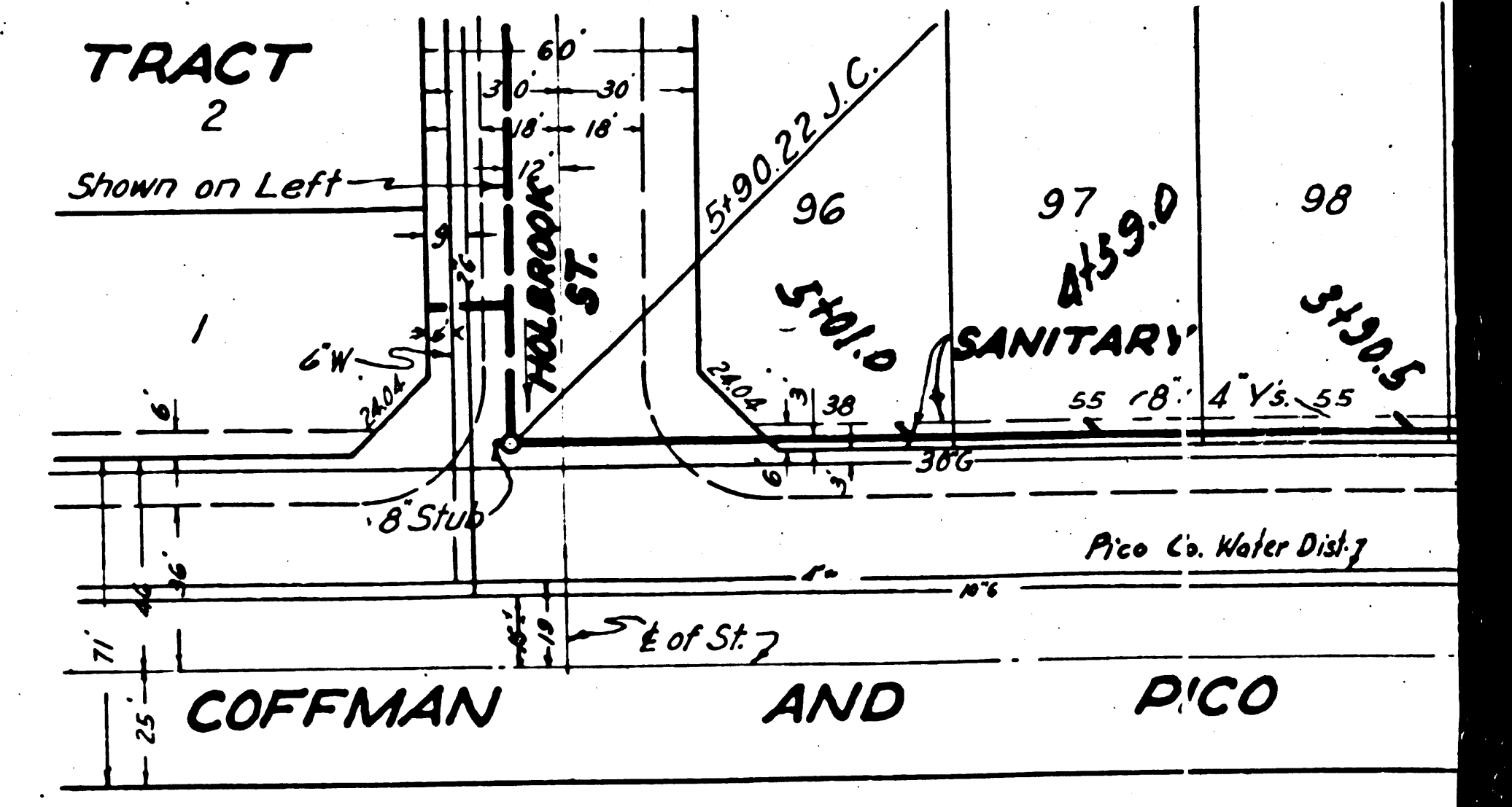
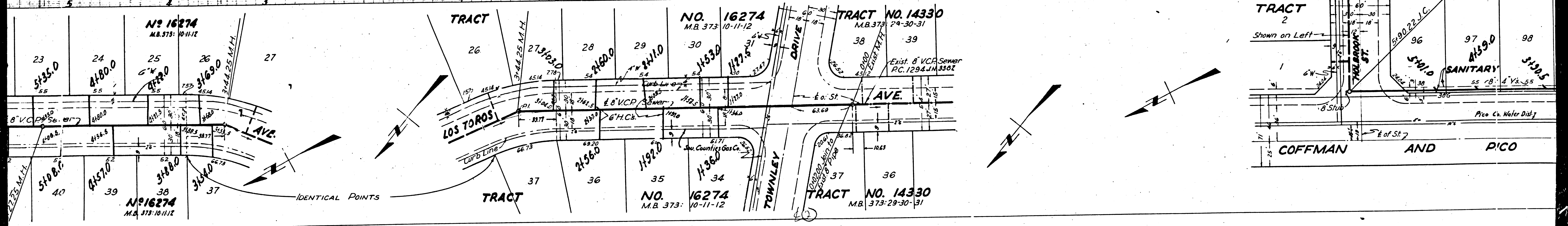
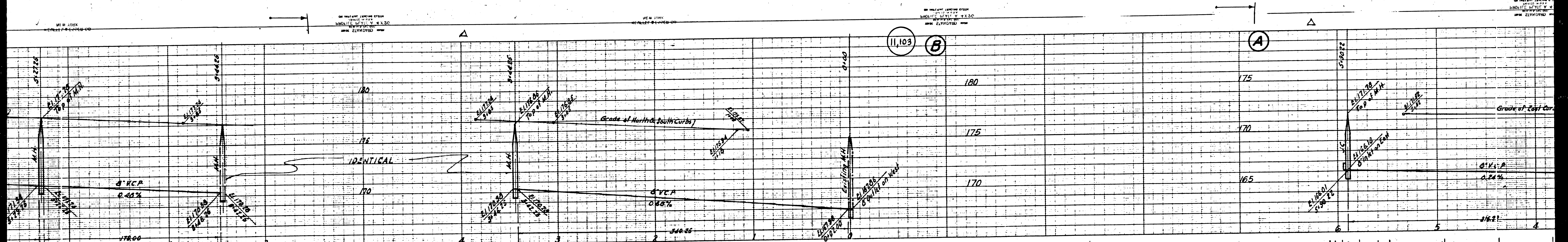
CHECKED: **H. C. ...**
 OFFICE OF COUNTY ENGINEER, R. 2, 6472

JUL 21 1950



Revised 9-25-50 W. Moore

Trim Line



ON THE LEFT LAYOUT FROM THE ORIGINAL PLAN SHEET NO. 11,104 DATE 11/10/12 SCALE 1" = 40' 0" BY ENGINEER J. N. JOHNSON

