

BM S.V. 19-55 Elev. 49.25  
 C.S.D.C. Mark & Intersection of Belleflower  
 & Del Amo 14200 S. of South St.

- NOTE:  
 NO REPRESENTATIVE OF THE COUNTY ENGINEER WILL SURVEY OR LAY OUT ANY PORTION OF THE WORK.  
 THE OWNER OR HIS AUTHORIZED REPRESENTATIVE SHALL FURNISH THE COUNTY ENGINEER WITH GRADE SHEETS AND STATIONS FOR ALL HOUSE CONNECTIONS AND Y BRANCHES AND SHALL PROVIDE STAKES FOR THEM AT THEIR PROPER LOCATIONS WITH STATIONING PLAINLY MARKED. ANY CHANGE OF LOCATION SHALL BE REQUESTED IN WRITING BY THE OWNER OR HIS REPRESENTATIVE.  
 ALL KEYINGS SHALL BE MADE IN THESE PLANS WITHOUT APPROVAL OF THE COUNTY ENGINEER.
1. USE STANDARD MANHOLE FRAMES AND COVERS, S.A. 117.
  2. USE STANDARD STRENGTH PIPE EXCEPT AS NOTED.
  3. USE CEMENT MORTAR FOR ALL VITRIFIED CLAY PIPE JOINTS.
  4. RESURFACE ALL TRENCH WITHIN PAVED AREA TO MEET L.A. COUNTY ROAD DEPT. REQUIREMENTS IN ACCORDANCE WITH PERMIT RULE, 20019.
  5. EXCAVE FOUR FEET OF SEWER AT POINTS OF INTERFERENCE WITH POLES, ETC.
  6. HOUSE CONNECTIONS TO BE CONSTRUCTED WITH INVERT AT 4'-0\"/>

PROFILE, ALIGNMENT AND GRADE OF  
**SANITARY SEWERS**  
 TO BE CONSTRUCTED IN  
**BELLEFLOWER BLVD.**  
 BETWEEN DEL AMO BLVD & HARDWICK ST.  
**ADENMOOR AVE.**  
 BETWEEN BRIERCREST AVE. & HARDWICK ST.  
**BRIERCREST AVE.**  
 BETWEEN DEL AMO BLVD & HARDWICK ST.  
 IN TRACT N9 16216.

PRIVATE CONTRACT NO. 1351  
 W. S. 31  
 SHEET 1 OF 4 SHEETS  
 DATE: JUNE 1950  
 PREPARED IN THE OFFICES OF  
**ENGINEERING SERVICE CORPORATION**

BY: *E. F. Young*  
 1127 W. Washington Blvd.  
 SEP 29 1950

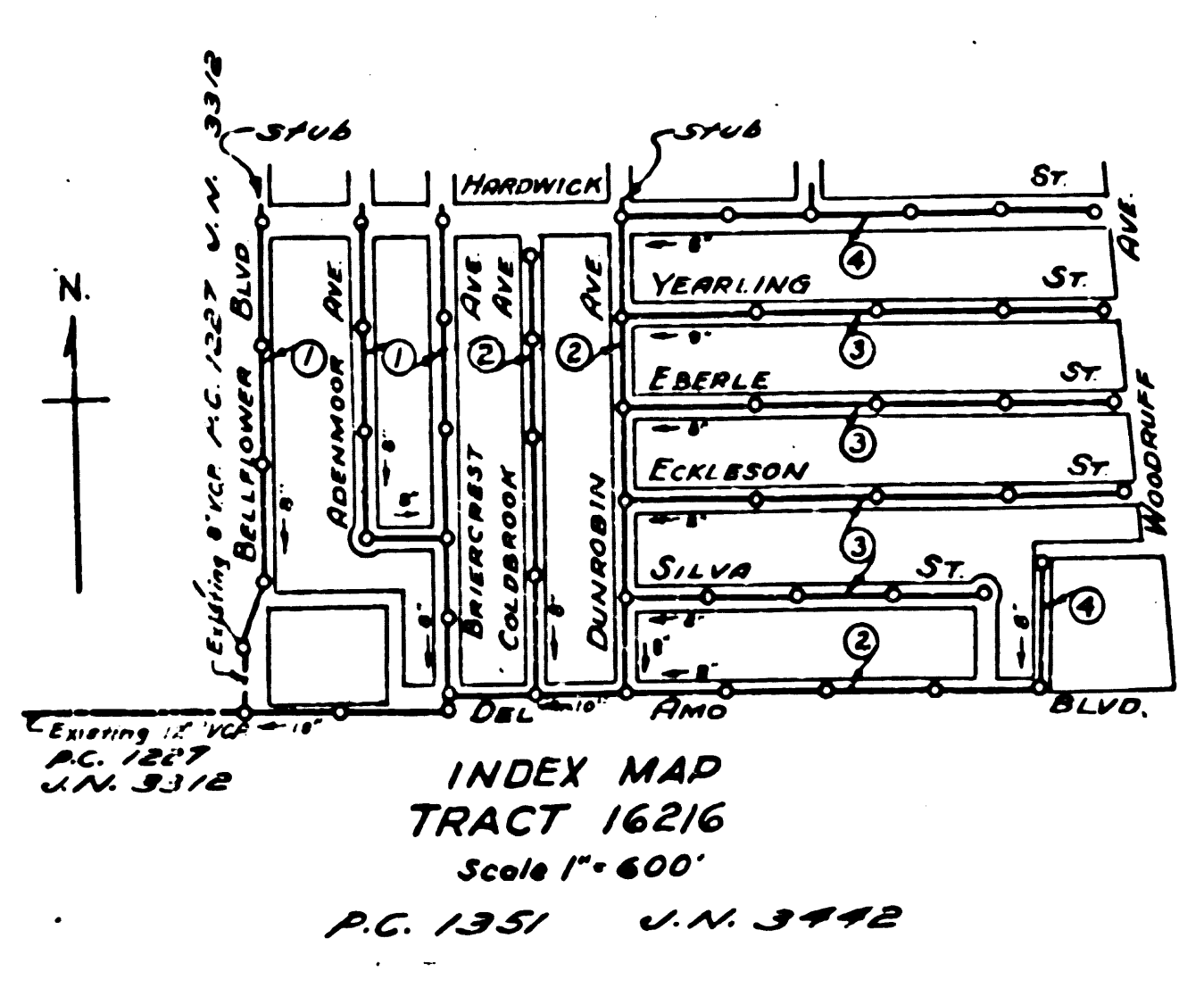
<b>ENGINEERING SERVICE CORPORATION</b>	
1127 W WASHINGTON BLVD. LOS ANGELES 15, CALIF. PR 7281	
REVISIONS	TRACED BY: <i>H.S.</i>
	DRAWN BY: <i>E.V.H.</i>
	CHECKED BY: <i>J.W.G.</i>
	SUBMITTED BY: <i>E. F. Young</i>
SUB STRUCTURES C&D	
W. O. NO.	DATE
5977-6	JUNE 1950

NOTE:  
 GRADES TO WHICH THIS IMPROVEMENT IS TO BE CONSTRUCTED ARE SHOWN ON PLANS AND PROFILES. GRADE POINTS FOR TOP OF CURB, CENTER LINE OF STREETS OR CENTER LINE OF ALLEY ARE SHOWN BY CIRCLES ON PROFILES. AT ALL POINTS BETWEEN DESIGNATED POINTS THE GRADE SHALL BE ESTABLISHED SO AS TO CONFORM TO A STRAIGHT LINE DRAWN BETWEEN SAID DESIGNATED POINTS.  
 ELEVATIONS ARE IN FEET ABOVE U. S. G. S. DATUM OR MEAN SEA LEVEL.  
 THIS DRAWING AND THE DATA HEREON ARE HEREBY MADE A PART OF THE SPECIFICATIONS. BEFORE WORK CAN BE PROCEEDED ONLY IN THE PRESENCE OF THE COUNTY ENGINEER. THE COUNTY ENGINEER AND SHALL BE PROSECUTED ONLY IN THE PRESENCE OF THE COUNTY ENGINEER.  
 BEFORE WORK CAN BE STARTED THE CONTRACTOR MUST OBTAIN A PERMIT TO EXCAVATE IN COUNTY STREETS FROM THE L. A. COUNTY ROAD DEPT. 211 50 MAIN ST. AND MAKE A DEPOSIT WITH THE COUNTY ENGINEER, 628 COUNTY ENGINEERING BUILDING SUFFICIENT TO COVER THE COST OF CONSTRUCTION INSPECTION AND RECORD PLANS.  
 APPROVAL OF THIS PLAN BY THE COUNTY OF LOS ANGELES DOES NOT CONSTITUTE A REPRESENTATION AS TO THE ACCURACY OF THE DATA OR THE EXISTENCE OR NON-EXISTENCE OF ANY UTILITIES. AS TO THE ACCURACY OF THE DATA OR THE EXISTENCE OR NON-EXISTENCE OF ANY UTILITIES, THE CONTRACTOR SHALL BE RESPONSIBLE.  
 COUNTY OF LOS ANGELES, CALIFORNIA

APPROVED: *E. F. Young*  
 COUNTY ENGINEER

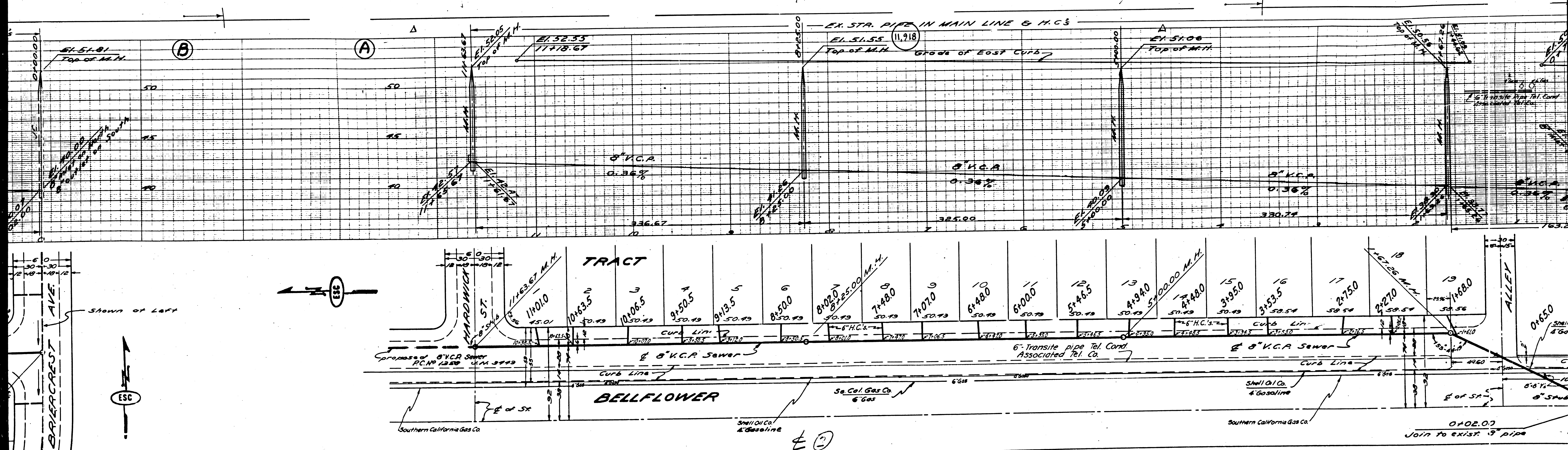
APPROVED: *W. L. Brown*  
 CHIEF ENGINEER OF COUNTY SANITATION DISTRICT NO. 3

CHECKED: *H. J. Young*  
 OFFICE OF COUNTY ENGINEER, REG. C. E. NO. 22,722



BRIERCREST AVE  
 ADENMOOR AVE  
 BELLEFLOWER BLVD  
 DEL AMO BLVD  
 HARDWICK ST

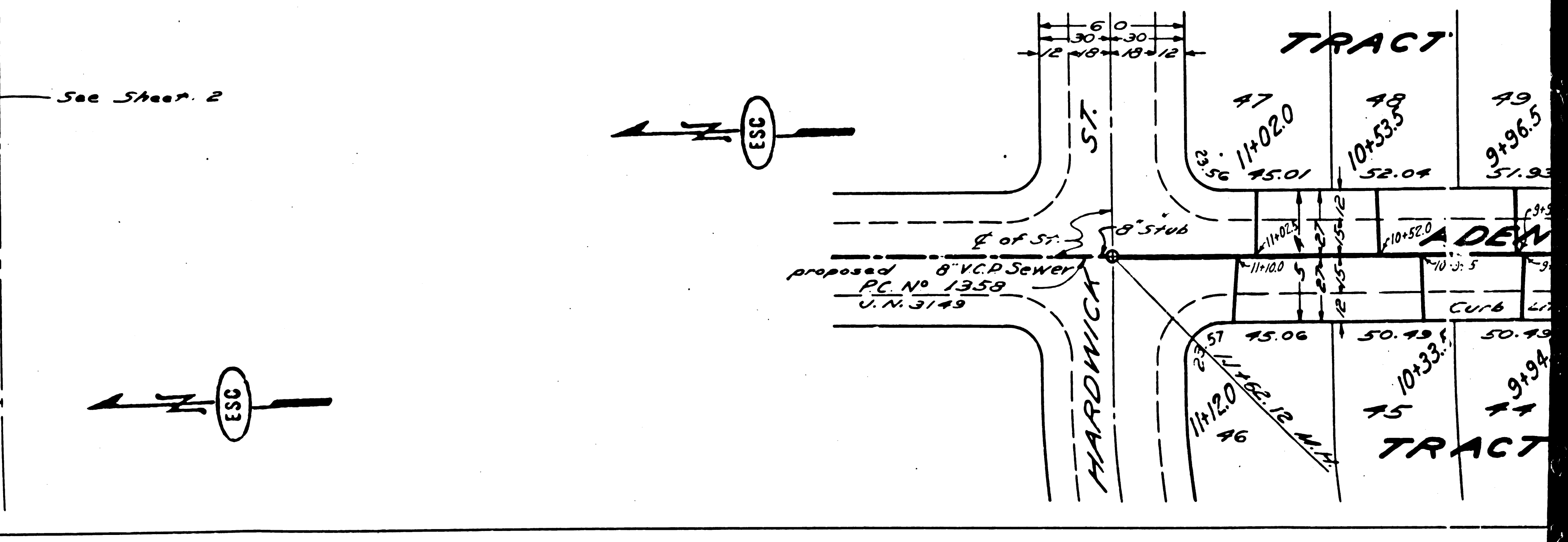
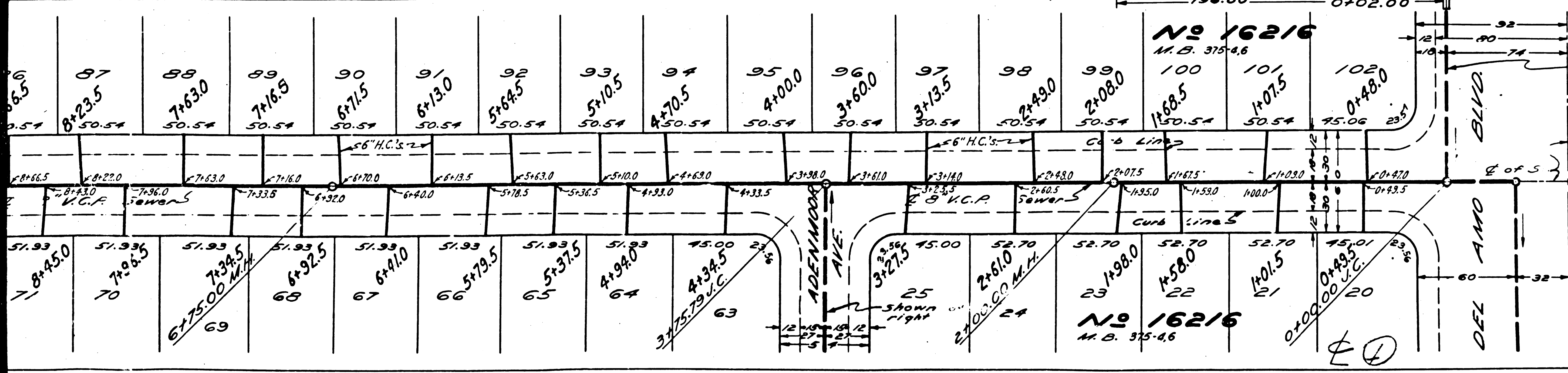
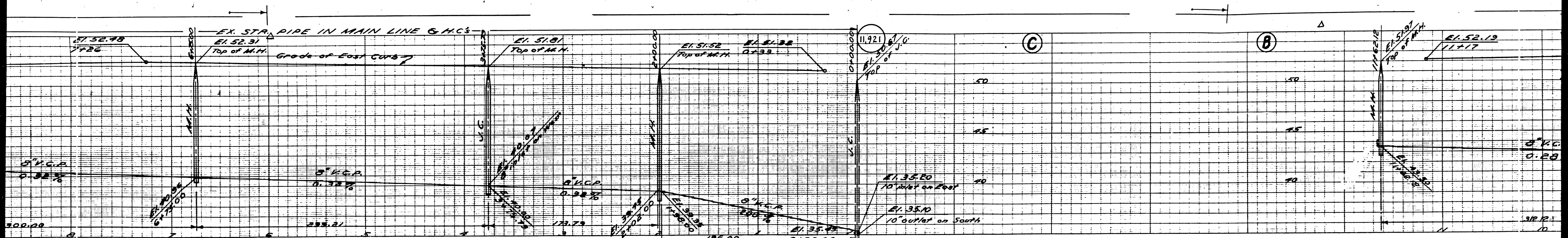




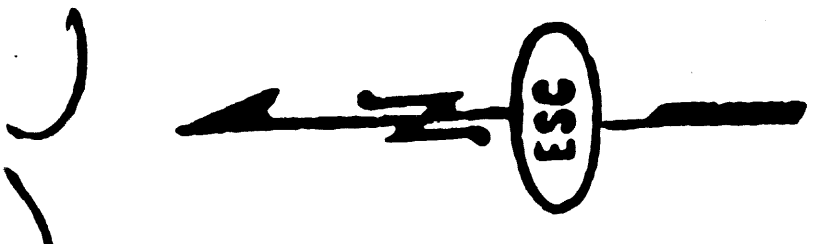
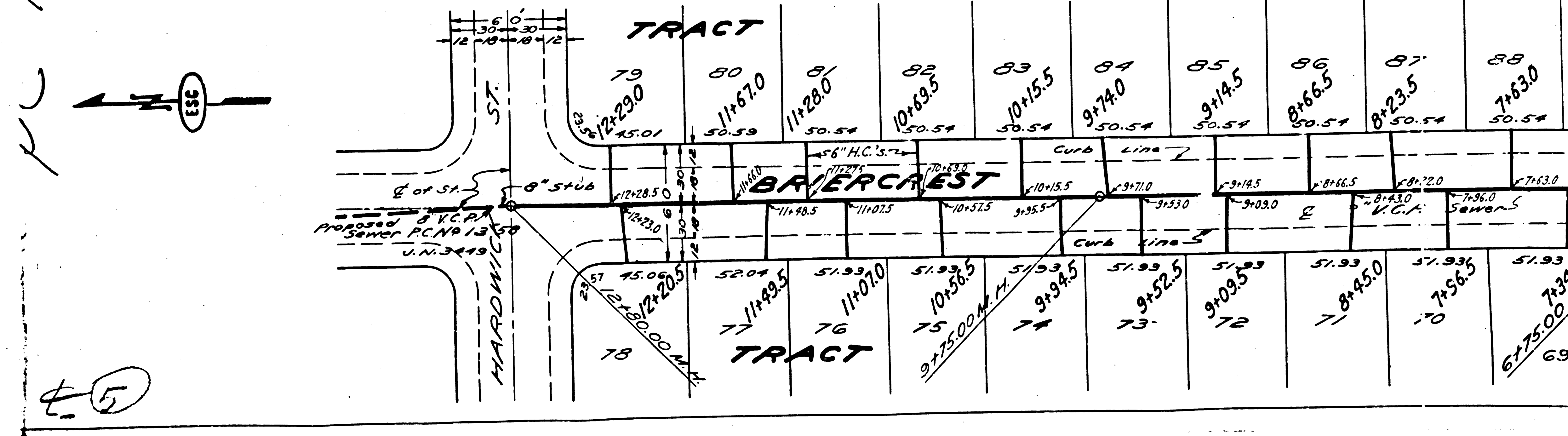
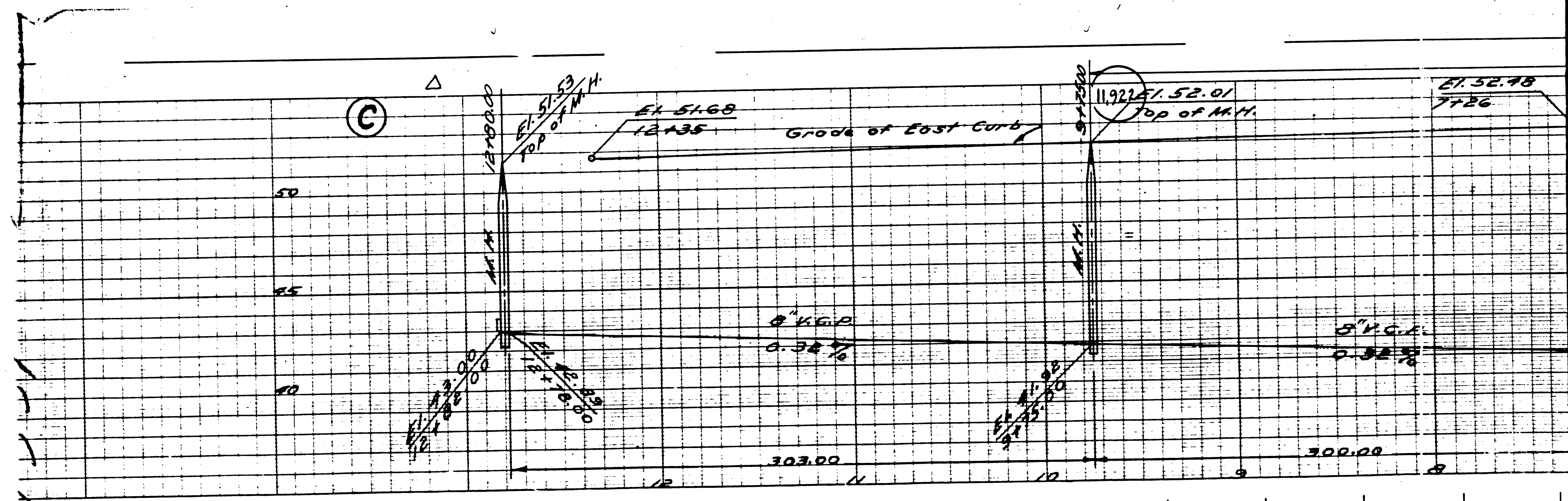








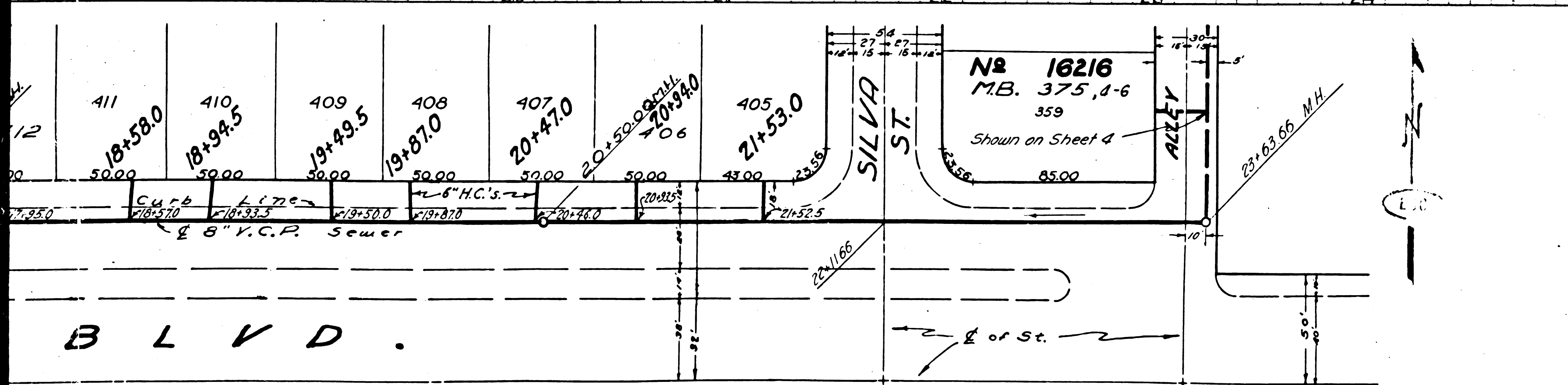
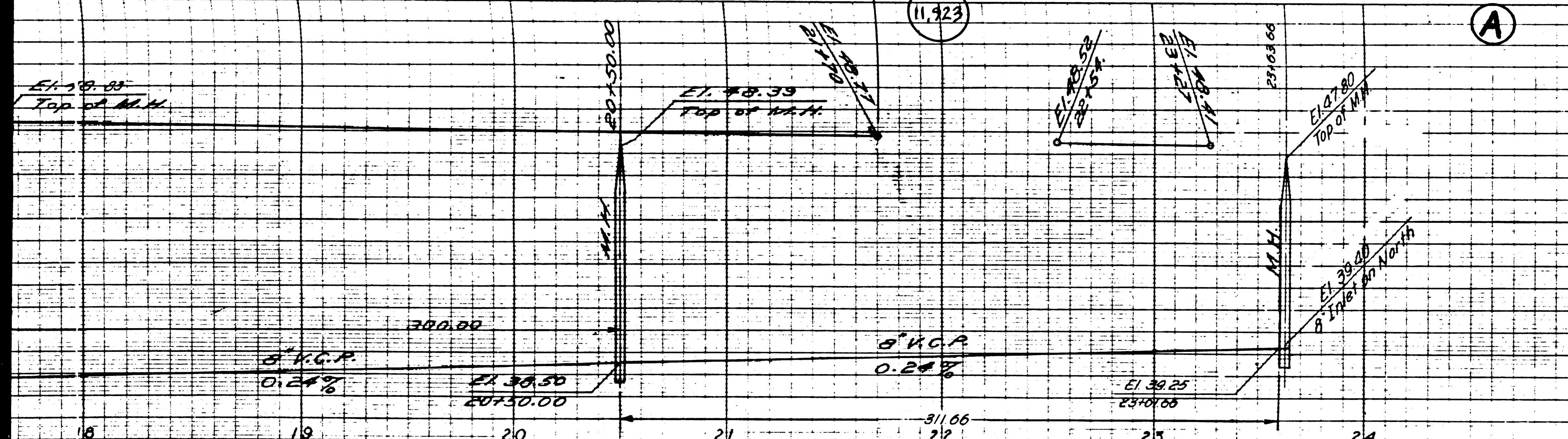




5



IN LINE 6 HOUSE CONNECTIONS



B.M. SY 13-35 Elev. 43.25  
 U.S.C. Mon. & Intersect. Point of Del Amo Blvd. & Silva St.  
 E. Del Amo Blvd. 4600' S. of South St.

PROFILE, ALIGNMENT AND GRADE OF  
**SANITARY SEWERS**  
 TO BE CONSTRUCTED IN  
**DEL AMO BLVD.**  
 BETWEEN BELLFLOWER BLVD. AND  
 FIRST ALLEY WEST OF WOODRUFF AVE.  
**COLDBROOK AVE.**  
 BETWEEN DEL AMO BLVD. & HARDWICK ST.  
**DUNROBIN AVE.**  
 BETWEEN DEL AMO BLVD. & HARDWICK ST.  
 IN TRACT NO. 16216

PRIVATE CONTRACT NO. 1351  
 W.S. 81  
 SHEET 2 OF 4 SHEETS

SCALE: VERT. 1" = 4'  
 HORIZ. 1" = 40'

JUNE, 1950  
 PREPARED IN THE OFFICES OF  
 ENGINEERING SERVICE CORPORATION

ENGINEERING SERVICE CORPORATION			
1127 W WASHINGTON BLVD.			
LOS ANGELES 15, CALIF. PR. 7281			
REVISIONS		TRACED BY H.S.	
		DESIGN BY PVH	
		CHK'D BY J.W.Z.	
		SUBMITTED W. Postlab.	
SUB STRUCTURES CH'D			
W.O. NO.	DWG. NO.	DATE	SCALE
5977-6		JUNE 1950	1/4" = 1'-0"

FOR LEGEND  
 SEE PLAN NO. S-4-84  
 FOR CONSTRUCTION NOTES SEE SHEET

COUNTY OF LOS ANGELES, CALIFORNIA

APPROVED: *[Signature]*  
 COUNTY ENGINEER

APPROVED: *[Signature]*  
 CHIEF ENGINEER OF COUNTY  
 SANITATION DISTRICT NO. 3

CHECKED: *[Signature]*  
 COUNTY ENGINEER REG. C.E. NO. 6472

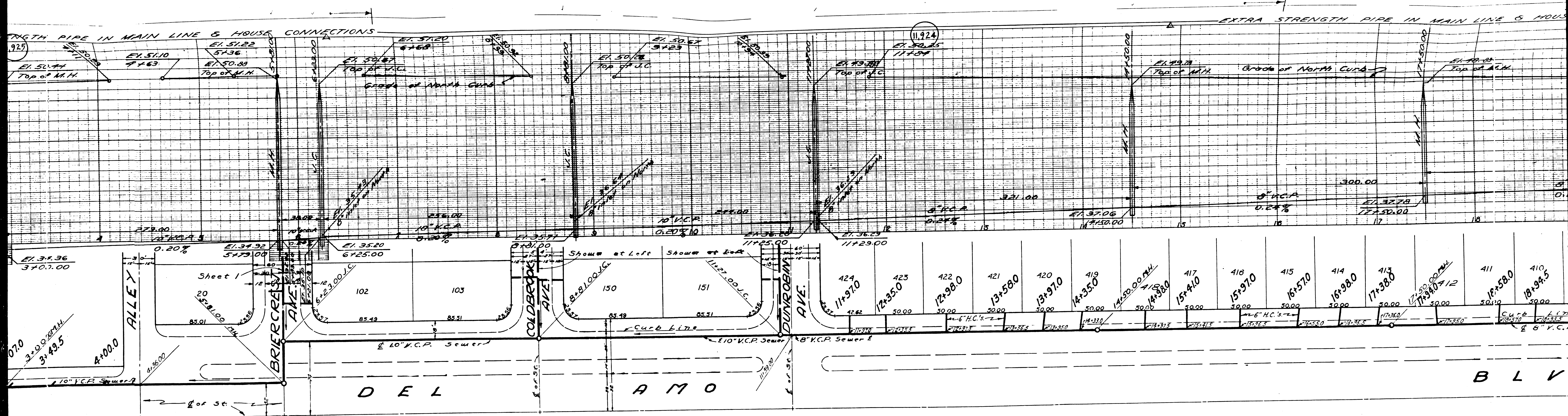
SEP 29 1950  
 SANITATION DISTRICT NO. 3

DUNROBIN AVE  
 COLDBROOK AVE  
 DEL AMO BLVD  
 CIVIL E  
 16216

E D

277



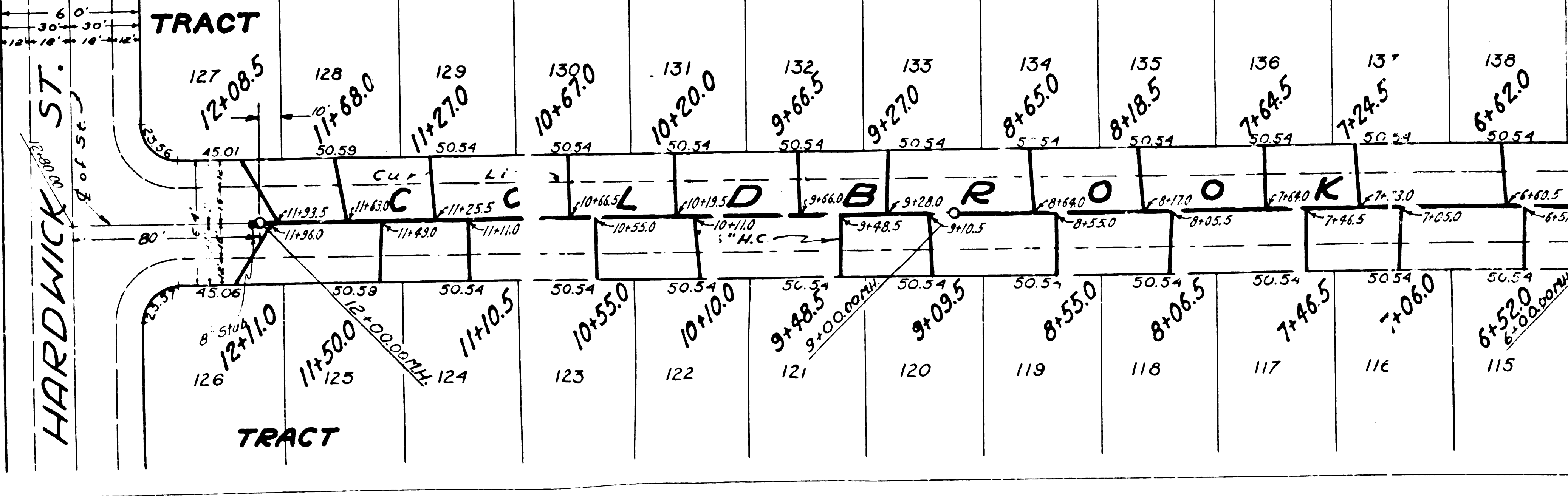
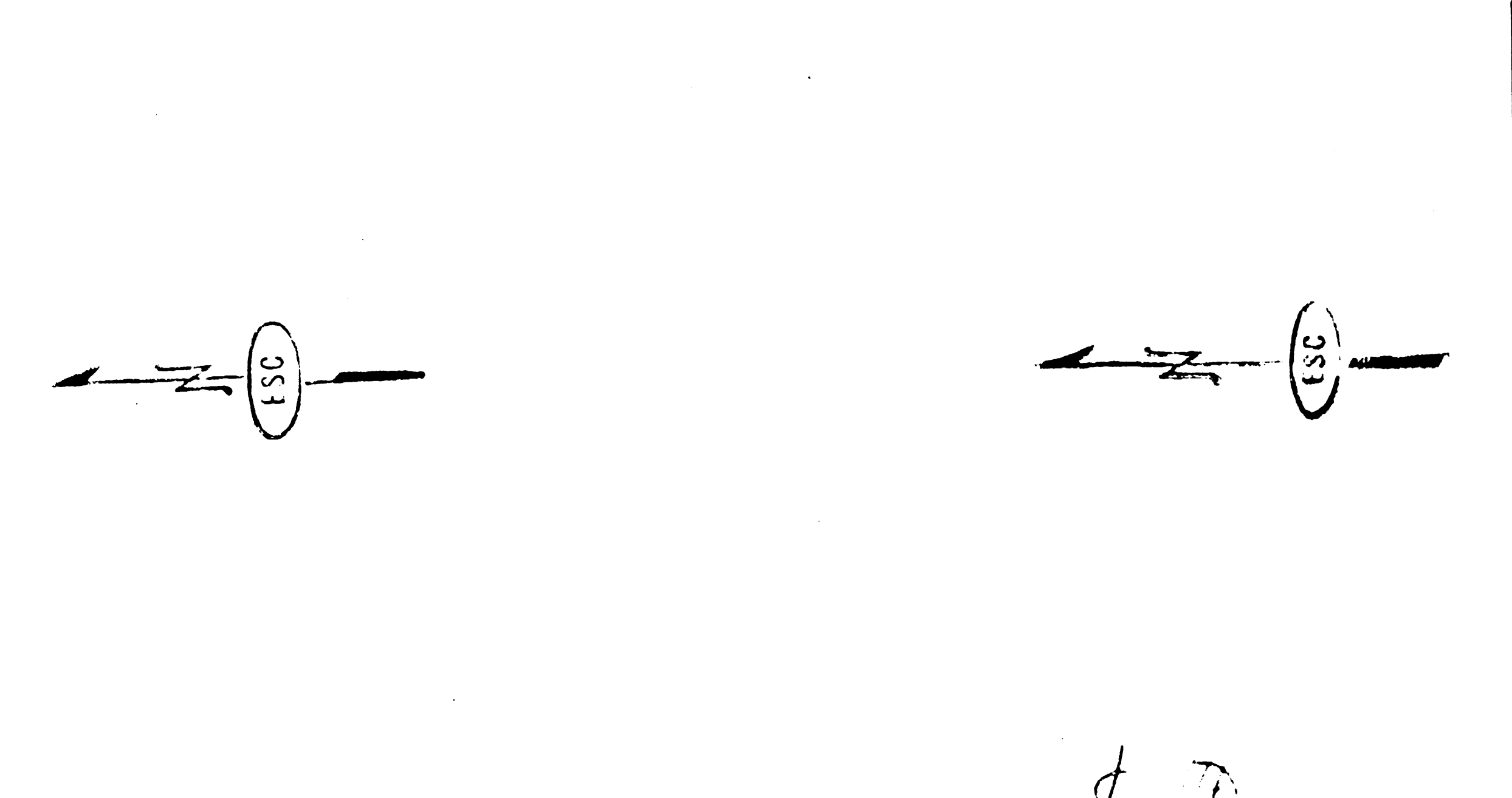
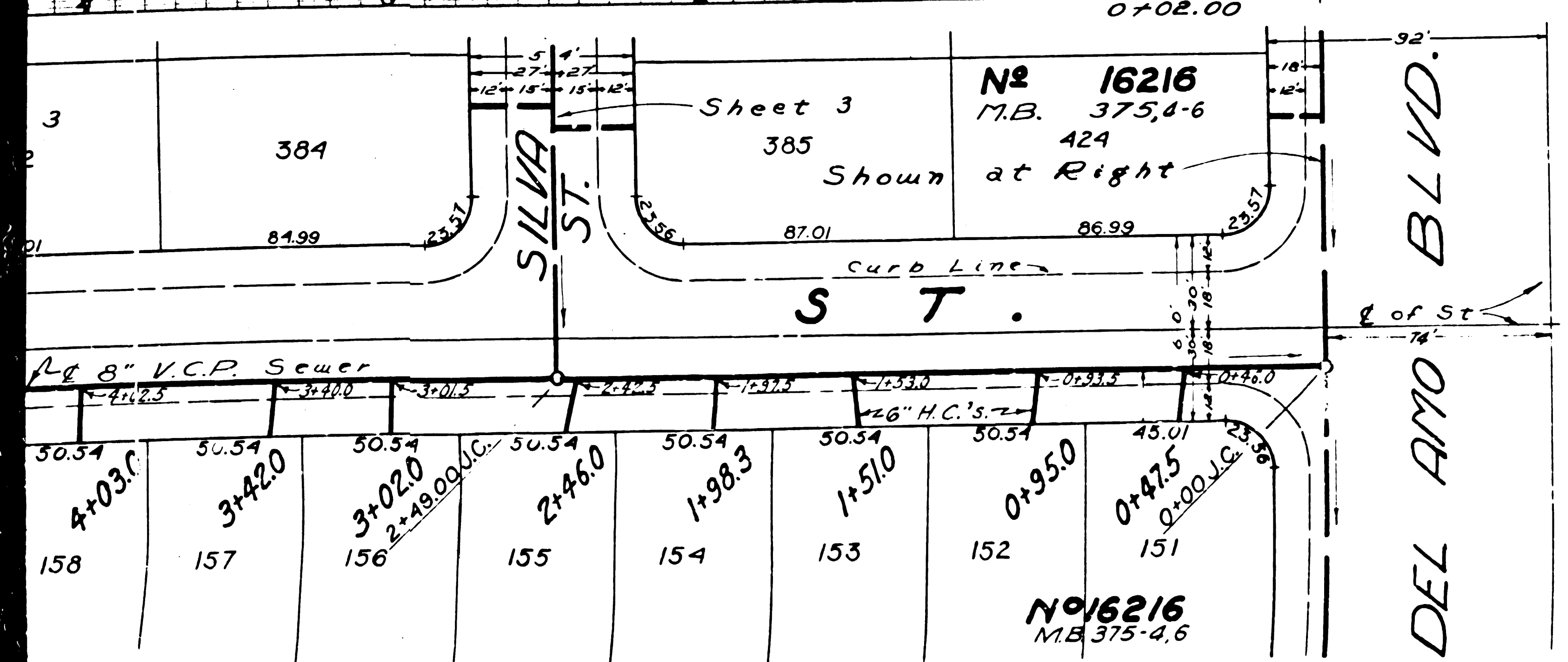
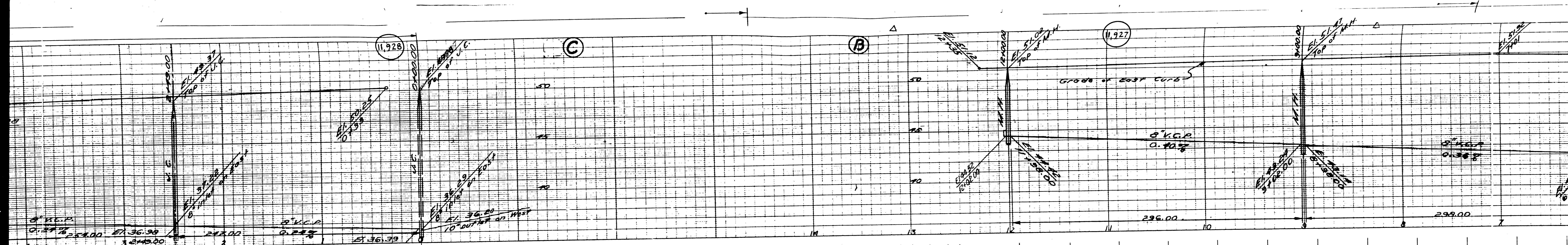


10

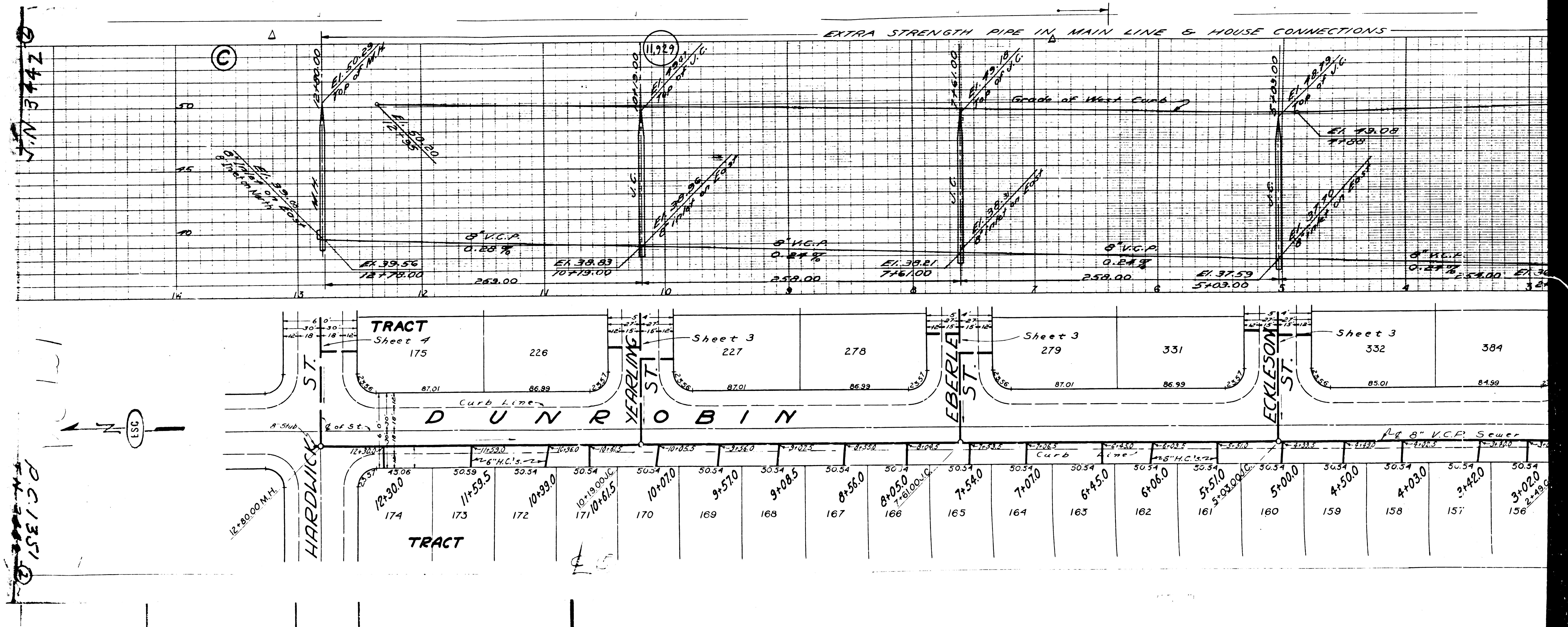












EXTRA STRENGTH PIPE IN MAIN LINE & HOUSE CONNECTIONS

P.C. 1351

P.C. 1351

TRACT  
Sheet 4  
175

Sheet 3  
227

Sheet 3  
279

Sheet 3  
332

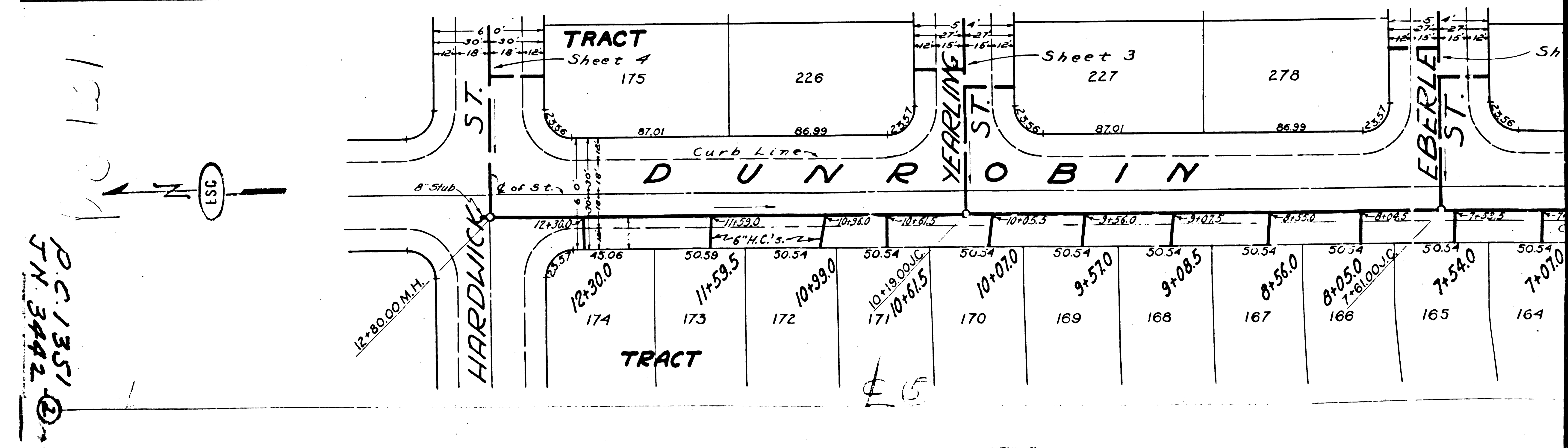
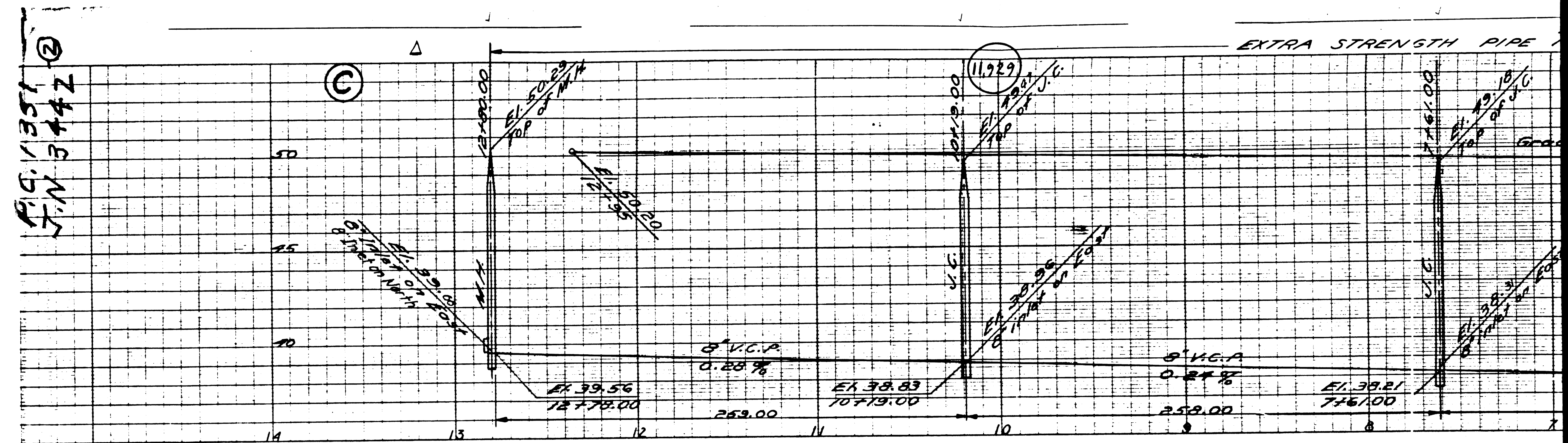
DUNROBIN

TRACT

8" V.C.P. Sewer

12+30.0	11+59.5	10+99.0	10+19.00/17+10+61.5	10+07.0	9+57.0	9+08.5	8+56.0	8+05.0	7+00.0/10+00.0	7+54.0	7+07.0	6+45.0	6+06.0	5+51.0	5+03.0/10+00.0	5+00.0	4+50.0	4+03.0	3+42.0	3+02.0
174	173	172	171	170	169	168	167	166	165	164	163	162	161	160	159	158	157	156	155	154

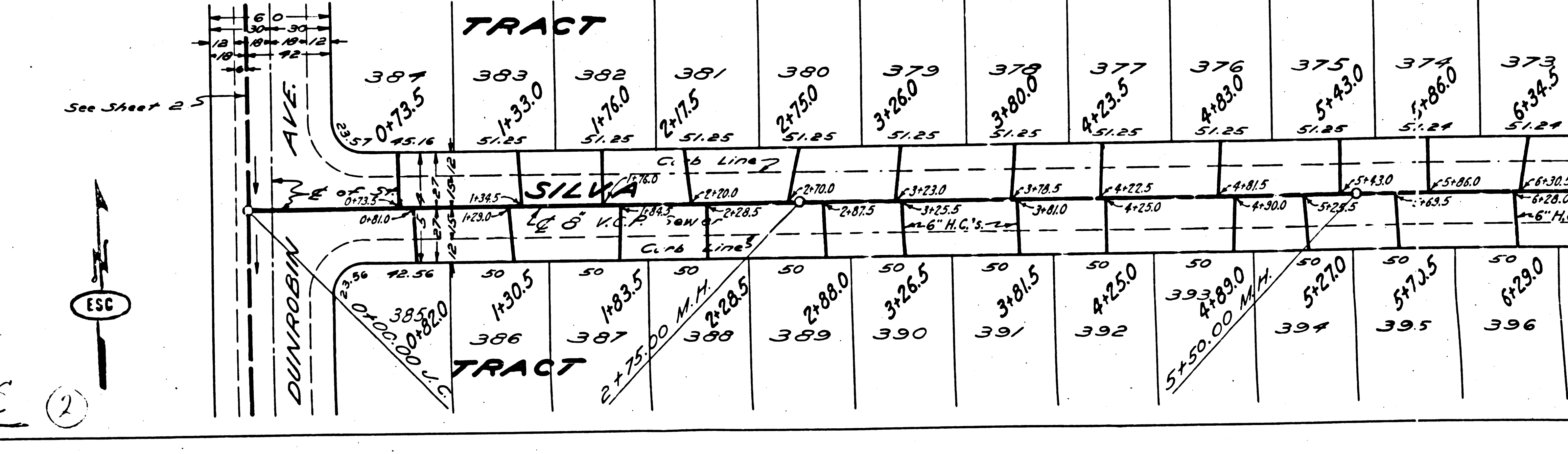
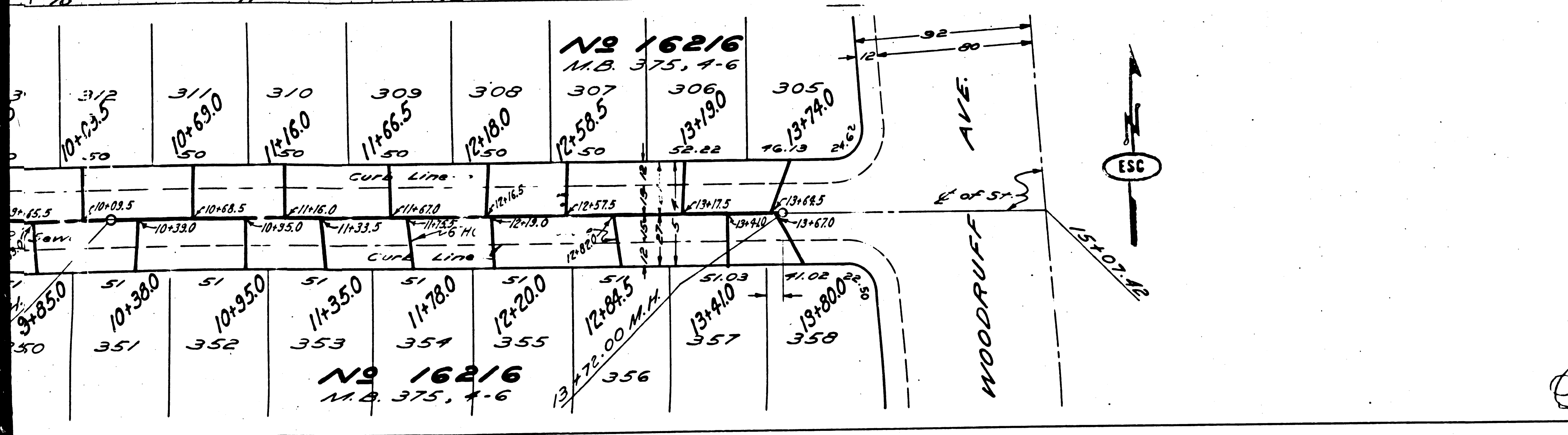
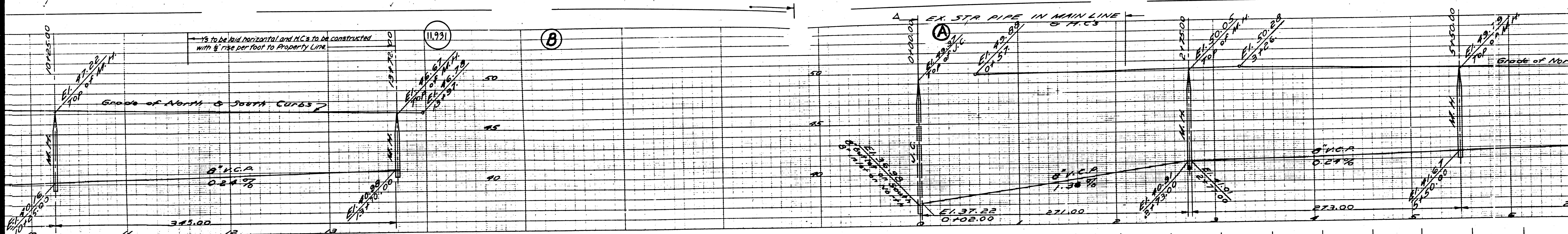




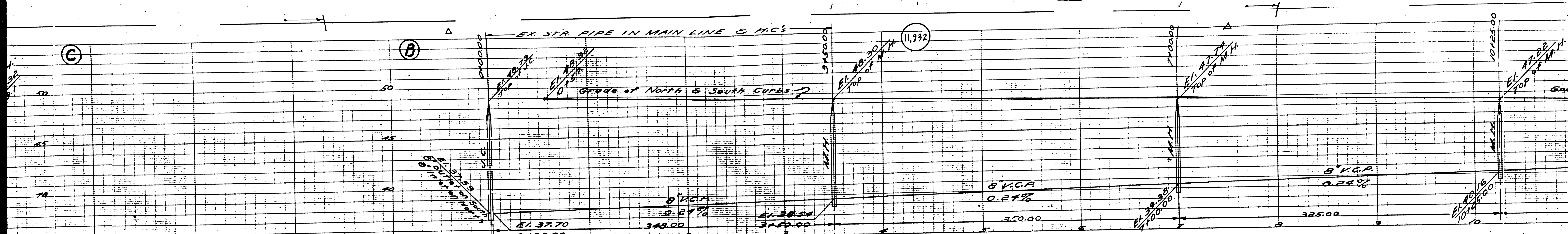




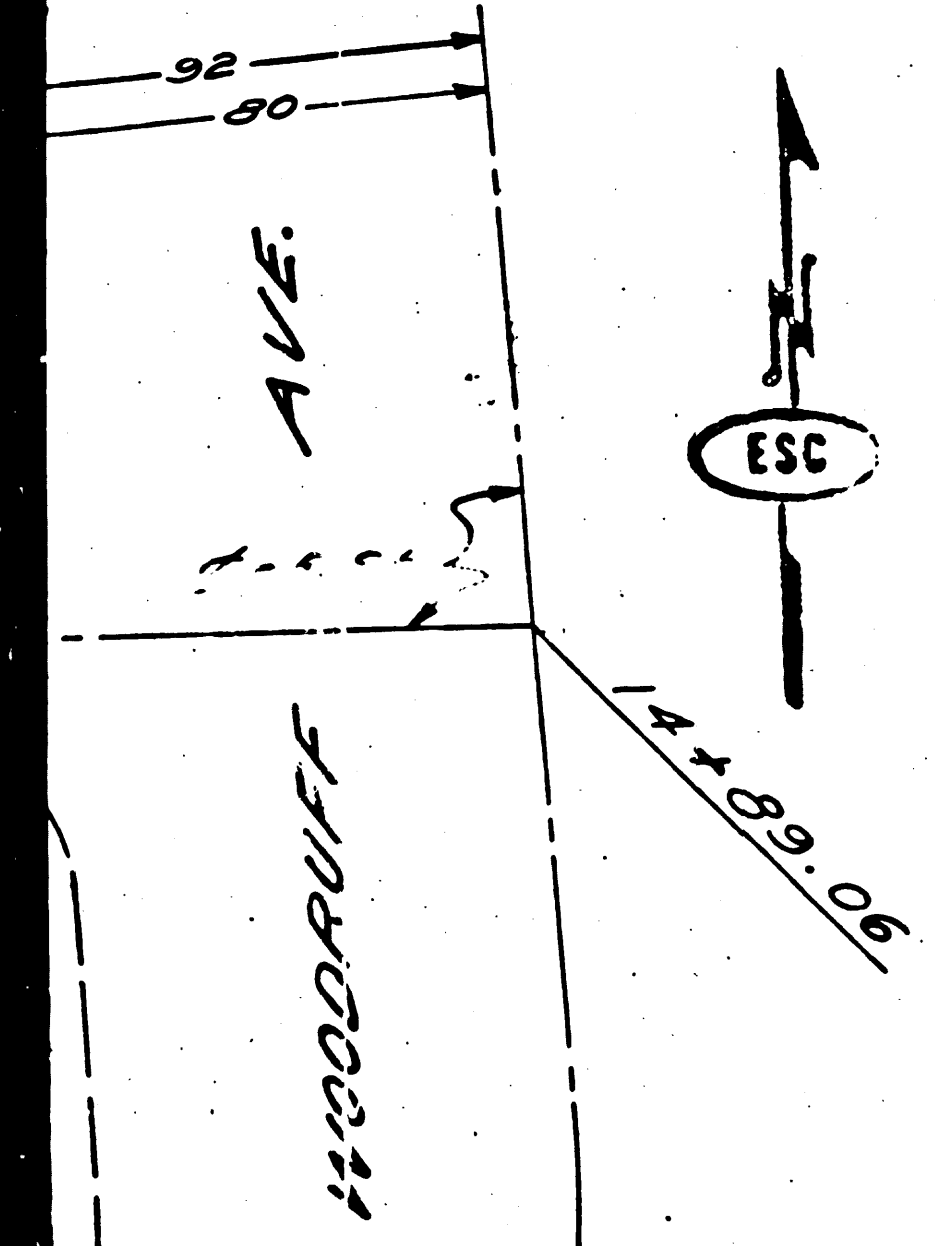








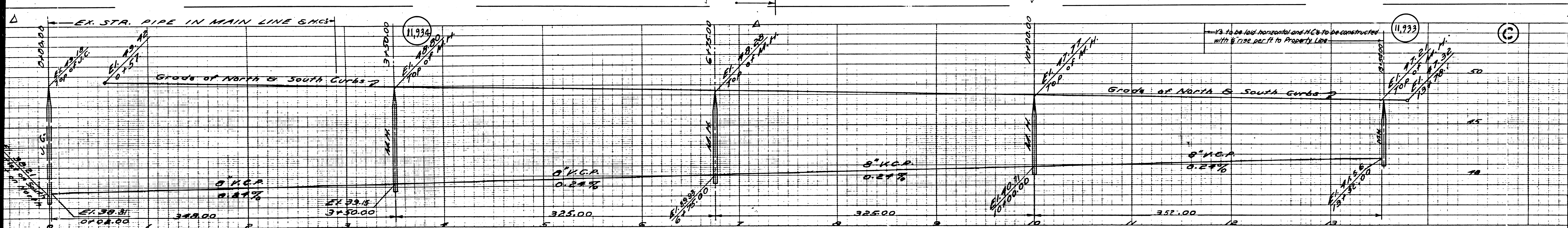
Station	331	330	329	328	327	326	325	324	323	322	321	320	319	318	317	316	315	314	313	312	311	
Elev.	11,925	11,880	11,820	11,720.5	11,685	11,650	11,615	11,580	11,545	11,510	11,475	11,440	11,405	11,370	11,335	11,300	11,265	11,230	11,195	11,160	11,125	11,090
Dist.	50	50	50	50	50	50	50	50	50	50	50	50	50	50	50	50	50	50	50	50	50	50
Area	10,000	10,000	10,000	10,000	10,000	10,000	10,000	10,000	10,000	10,000	10,000	10,000	10,000	10,000	10,000	10,000	10,000	10,000	10,000	10,000	10,000	10,000
Notes																						



See Sheet 2







Station	Grade	Notes
278	11720	
277	11740	
276	11750	
275	11725	
274	11750	
273	11780	
272	11810	
271	11830	
270	11830	
269	11850	
268	11845	
267	11850	
266	11870	
265	11900	
264	11980	
263	12000	
262	12010	
261	12030	
260	12040	
259	12040	
258	12060	
257	12085	
256	12095	
255	12140	
254	12190	
253	12250	
280	1280	
281	11900	
282	12395	
283	12840	
284	13440	
285	13880	
286	14305	
287	14945	
288	15430	
289	15860	
290	16490	
291	16975	
292	17610	
293	18010	
294	18435	
295	19090	
296	19575	
297	19980	
298	20725	
299	21135	
300	21575	
301	22175	
302	22695	
303	23320	
304	23665	

No 16216  
M.B. 375, 4-6

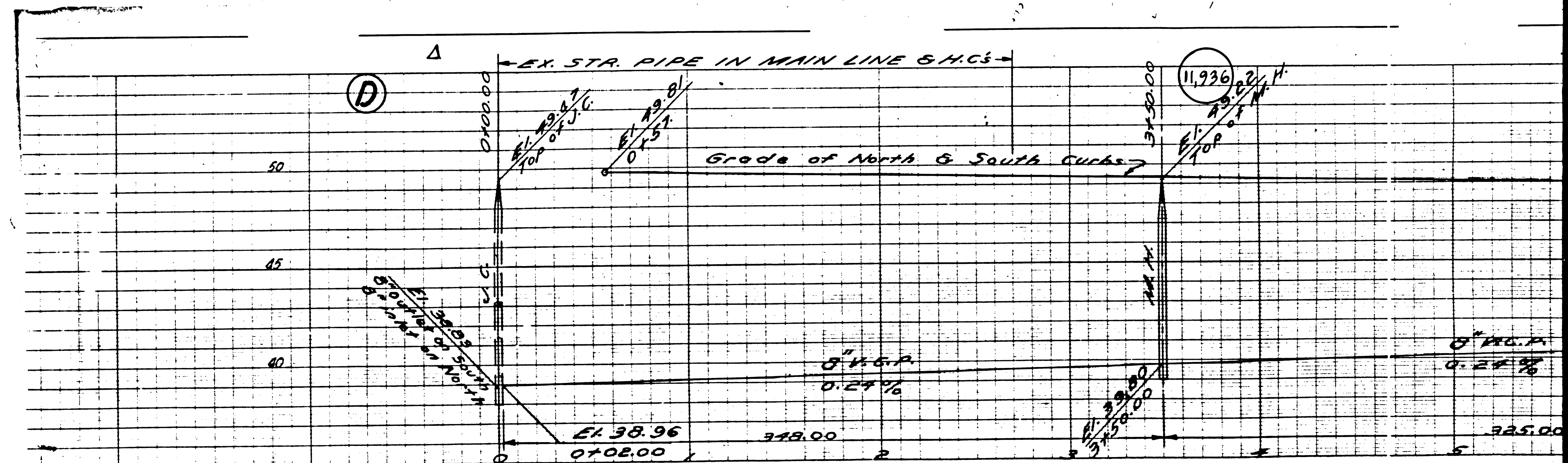
No 16216  
M.B. 375, 4-6

ESC









P.C. 11

See Sheet 2

ESC

226	225	224	223	222	221	220	219	218	217
0+710	1+110	1+810	2+230	2+680	3+315	3+735	4+205	4+695	5+140
50	50	50	50	50	50	50	50	50	50
227	228	229	230	231	232	233	234	235	236
0+730	1+315	1+860	2+430	2+845	3+390	3+875	4+450	4+860	5+420
51	51	51	51	51	51	51	51	51	51

DUNROBIN AVE

YEARLING

TRACTION

TRACTION

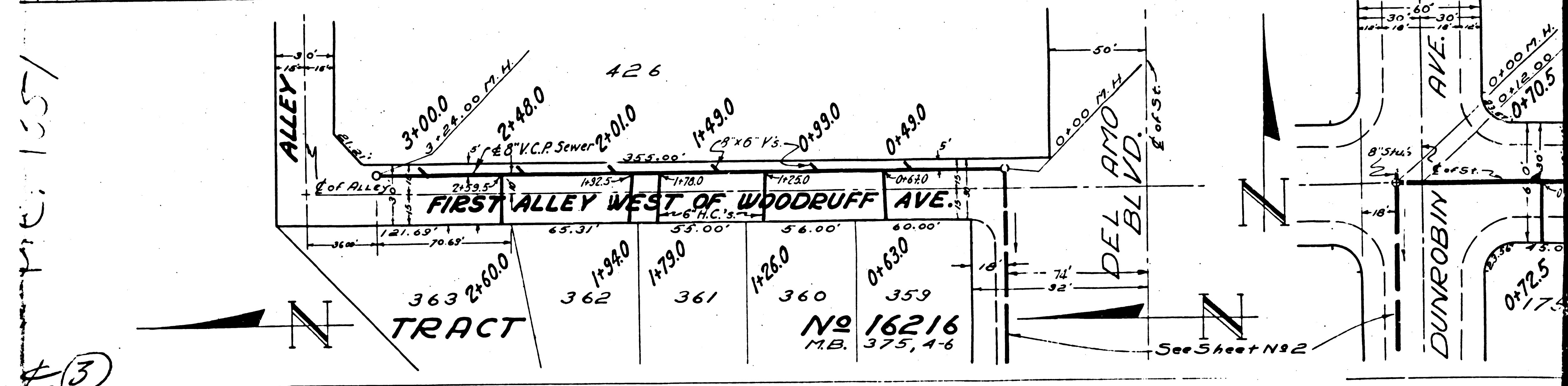
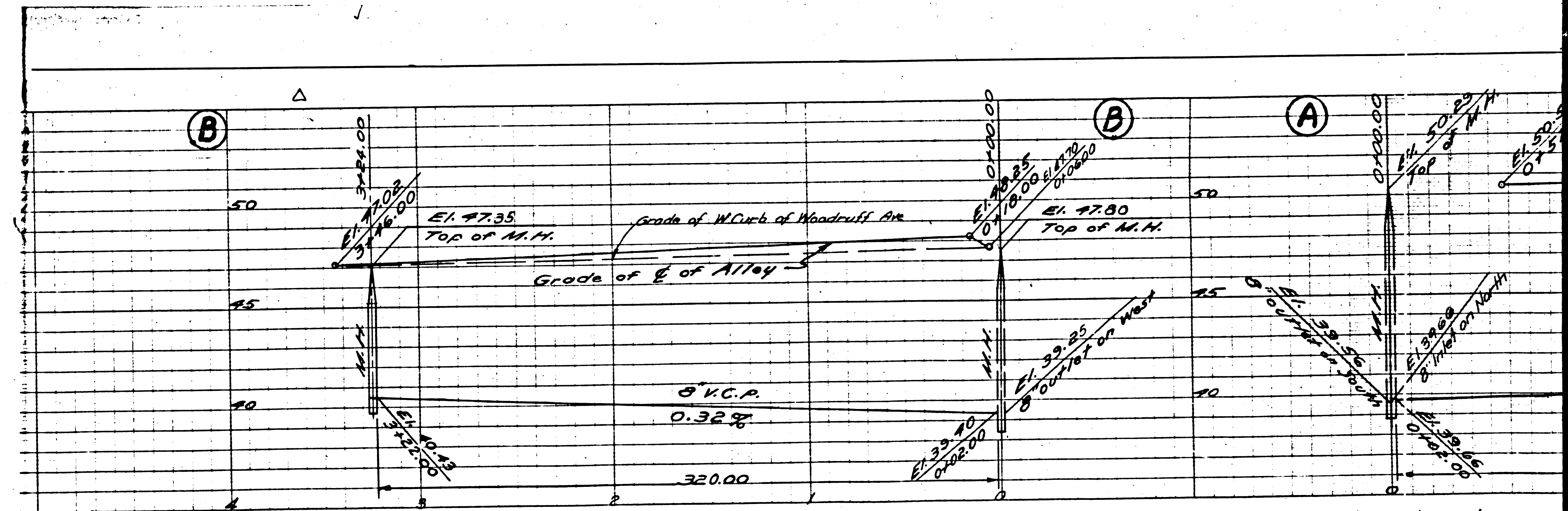












155/  
 ③