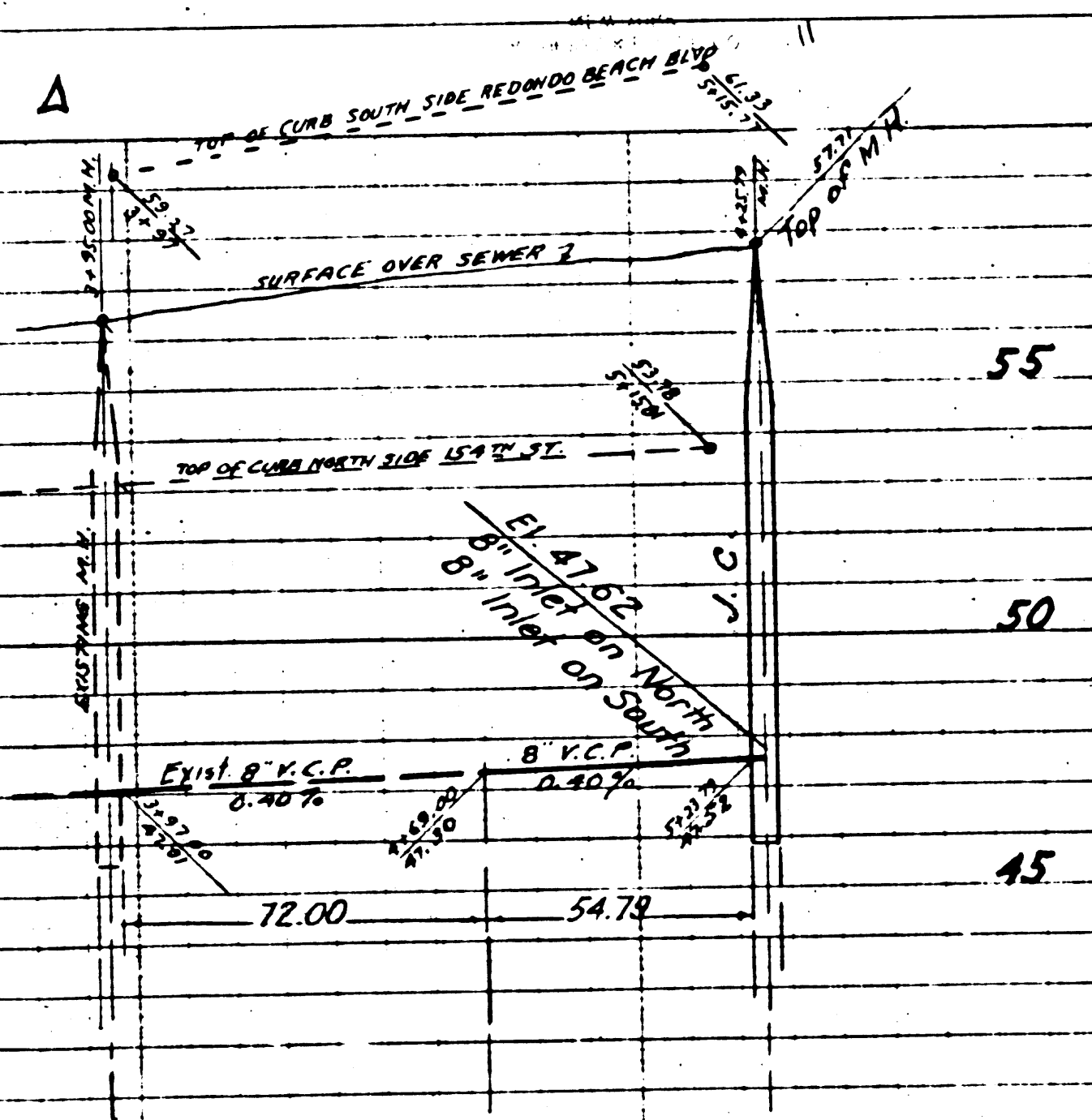


DATE: APR 4 1950  
 SHEET NO. 1 OF 1  
 DRAWN BY: R.V. PEARSELL



BENCH MARK: LOS ANGELES COUNTY No. 8-83  
 ELEV. 54.82 L.A.T. (S.E.) & INTERSECTION,  
 BROADWAY & REDONDO BEACH BLVD.

- (1) USE STANDARD MANHOLE FRAME AND COVER. S-a-117.
- (2) USE STANDARD STRENGTH PIPE.
- (3) USE CEMENT MORTAR FOR ALL VITRIFIED CLAY PIPE JOINTS.
- (4) RESURFACE ALL TRENCH WITHIN PAVED AREA TO MEET LOS ANGELES COUNTY ROAD DEPT. REQUIREMENTS—IN ACCORDANCE WITH THE PERMIT.
- (5) CONSTRUCT HOUSE CONNECTION WITH INVERT AT PROPERTY LINE 7 FEET BELOW ALLEY LINE GRADE.
- (6) ALL STRUCTURES SHALL BE BRICK SEWER STRUCTURES. S-a-104.

NOTE: NO REPRESENTATIVE OF THE COUNTY ENGINEER WILL SURVEY OR LAY OUT ANY PORTION OF THE WORK. THE OWNER OR HIS AUTHORIZED REPRESENTATIVE SHALL FURNISH THE COUNTY ENGINEER WITH GRADE SHEETS AND STATIONS OF ALL HOUSE CONNECTIONS AND Y BRANCHES AND SHALL PROVIDE STAKES FOR THEM AT THEIR PROPER LOCATIONS WITH STATIONING PLAINLY MARKED. ANY CHANGE OF LOCATION SHALL BE REQUESTED IN WRITING BY THE OWNER OR HIS REPRESENTATIVE. NO REVISIONS SHALL BE MADE IN THESE PLANS WITHOUT APPROVAL OF THE COUNTY ENGINEER. PROVIDE STAKES ON THE PROPERTY LINE OR PROPERTY LINE PRODUCED AT RIGHT ANGLES TO THE SEWER LINE AT THE CENTER LINE OF MANHOLE.

Before any connection for the disposal of liquid industrial wastes is made to this sewer, detailed plans must be submitted to, and a permit secured from the county engineer.

13,292

PROFILE, ALIGNMENT AND GRADE OF  
**SANITARY SEWER**  
 TO BE CONSTRUCTED IN  
**ALLEY**  
 BETWEEN REDONDO BEACH BOULEVARD & 154<sup>TH</sup> ST.  
 IN TRACT NO. 10108, M.B. 160 P. 10

PRIVATE CONTRACT NO. 1363  
 W.S. 26  
 SHEET 1 OF 1 SHEET  
 SCALE: VERT. 1" = 4'  
 HORIZ. 1" = 40'  
 APRIL 4, 1950

PREPARED IN THE OFFICE OF

R.V. PEARSALL

BY: R.V. Pearsall REG. C.E. NO. 3204

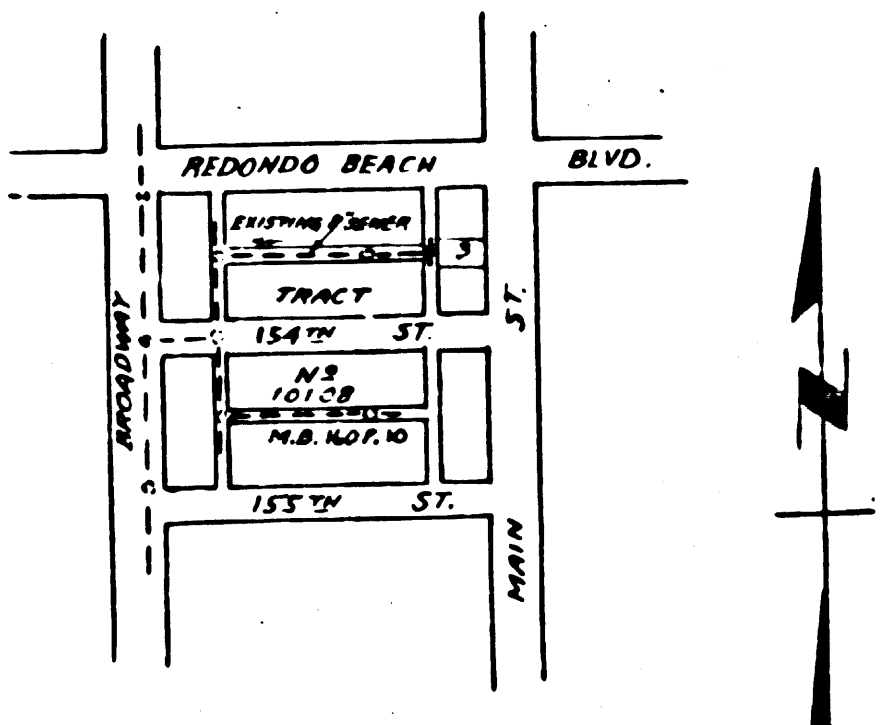
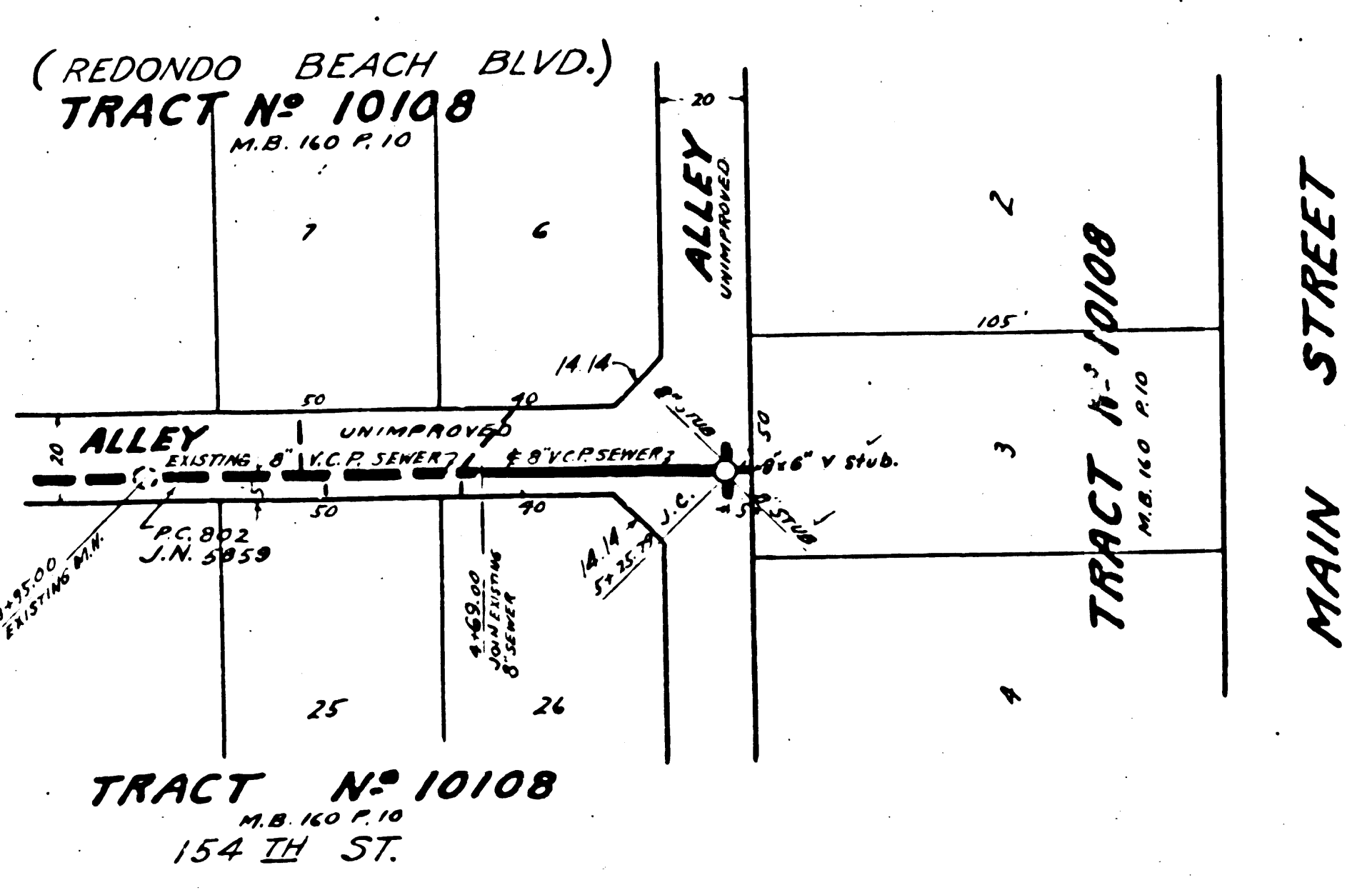
FOR LEGEND  
 SEE PLAN NO. S-8-64

NOTE: GRADES TO WHICH THIS IMPROVEMENT IS TO BE CONSTRUCTED ARE SHOWN ON PLANS AND PROFILE GRADE POINTS FOR TOP OF CURB, CENTER LINE OF STREET OR CENTER LINE OF ALLEY ARE SHOWN BY CIRCLES ON PROFILES. AT ALL POINTS BETWEEN DESIGNATED POINTS THE GRADE SHALL BE ESTABLISHED SO AS TO CONFORM TO A STRAIGHT LINE DRAWN BETWEEN SAID DESIGNATED POINTS. ELEVATIONS ARE IN FEET ABOVE U. S. S. DATUM OR MEAN SEA LEVEL. THIS DRAWING AND THE DATA HEREON ARE HEREBY MADE A PART OF THE SPECIFICATIONS. WORK SHALL BE CONSTRUCTED ACCORDING TO SPECIFICATIONS ON FILE IN THE OFFICE OF THE COUNTY ENGINEER AND SHALL BE PROSECUTED ONLY IN THE PRESENCE OF THE COUNTY ENGINEER. BEFORE WORK CAN BE STARTED, THE CONTRACTOR MUST OBTAIN A PERMIT TO EXCAVATE IN COUNTY STREETS FROM THE L.A. COUNTY ROAD DEPT., 211 30 MAIN STREET, AND MAKE A DEPOSIT WITH THE COUNTY ENGINEER, 810 L.A. COUNTY ENGINEERING BLDG., SUFFICIENT TO COVER THE COST OF CONSTRUCTION INSPECTION AND RECORD PLANS. IF WORK IS TO BE DONE ON A STATE HIGHWAY, A PERMIT MUST BE OBTAINED FROM THE STATE OF CALIFORNIA, DIVISION OF HIGHWAYS, 120 S. SPRING ST. AFTER MAKING THE DEPOSIT WITH THE COUNTY ENGINEER. APPROVAL OF THIS PLAN BY THE COUNTY OF LOS ANGELES DOES NOT CONSTITUTE A REPRESENTATION AS TO THE ACCURACY OF THE LOCATION OF, OR THE EXISTENCE OR NON EXISTENCE OF ANY UNDERGROUND UTILITY PIPE OR STRUCTURE WITHIN THE LIMITS OF THIS PROJECT.

RECEIVED  
 MAY 15 1950  
 SANITATION DIVISION

COUNTY OF LOS ANGELES, CALIFORNIA  
 APPROVED: [Signature] COUNTY ENGINEER  
 APPROVED: [Signature] SANITATION DISTRICT NO. 8

CHECKED BY: [Signature] 4-24-1950  
 OFFICE OF COUNTY ENGINEER, R.M. 61 NO. 6322



INDEX MAP  
 SCALE 1/4" = 500'  
 R.C. 1363  
 J.N. 3453