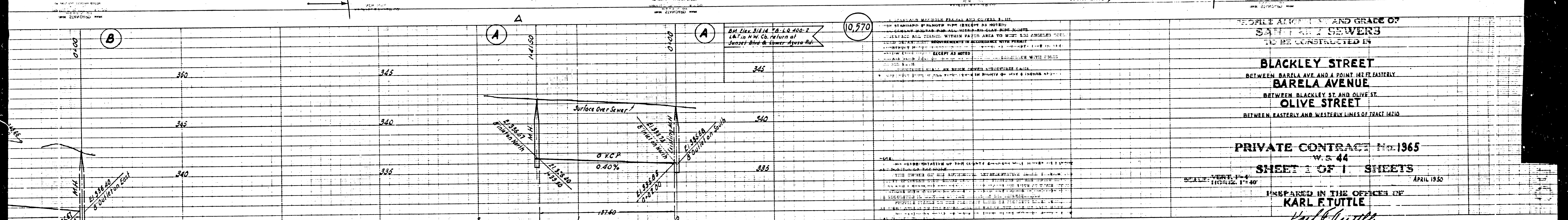


72-18 314.801

Trim Line



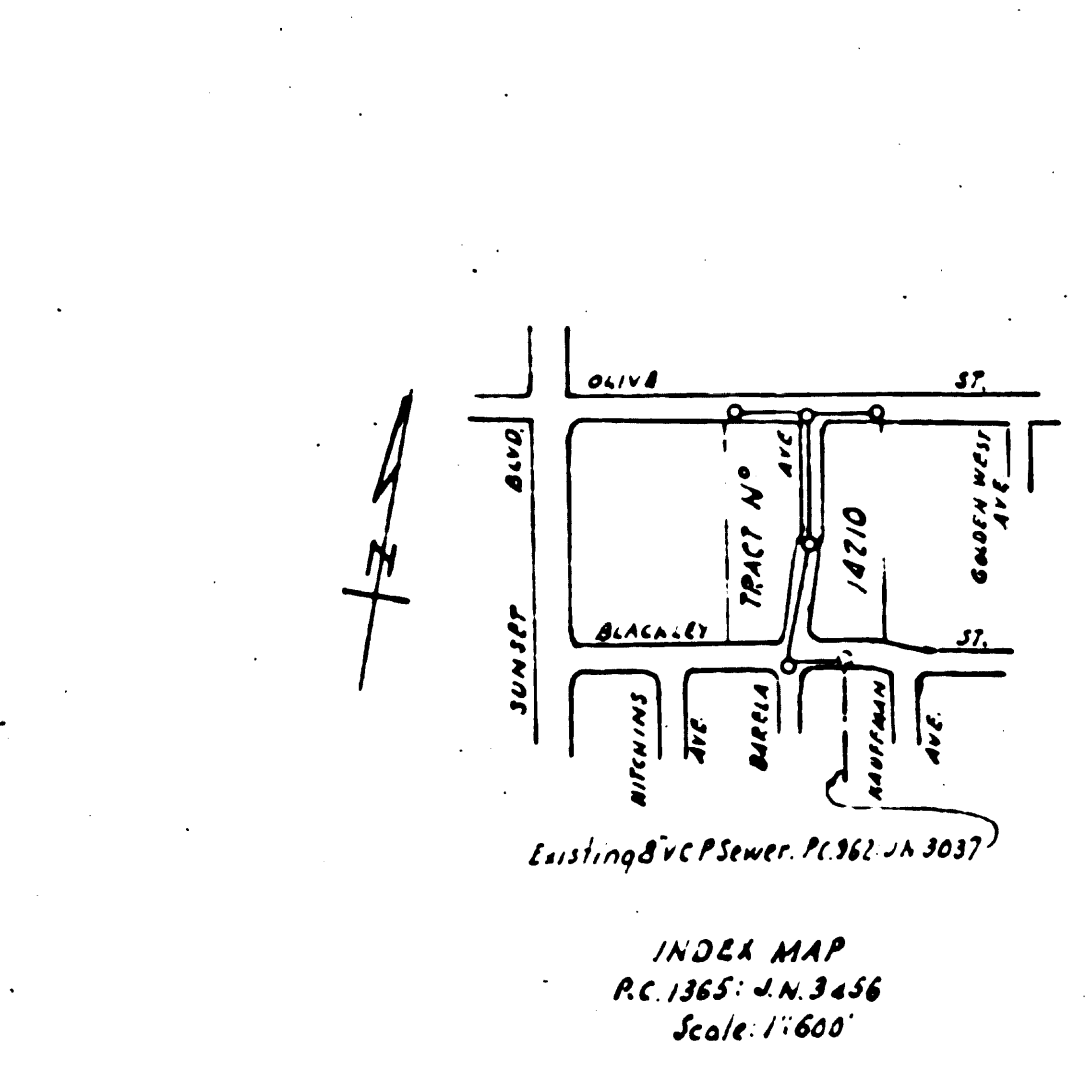
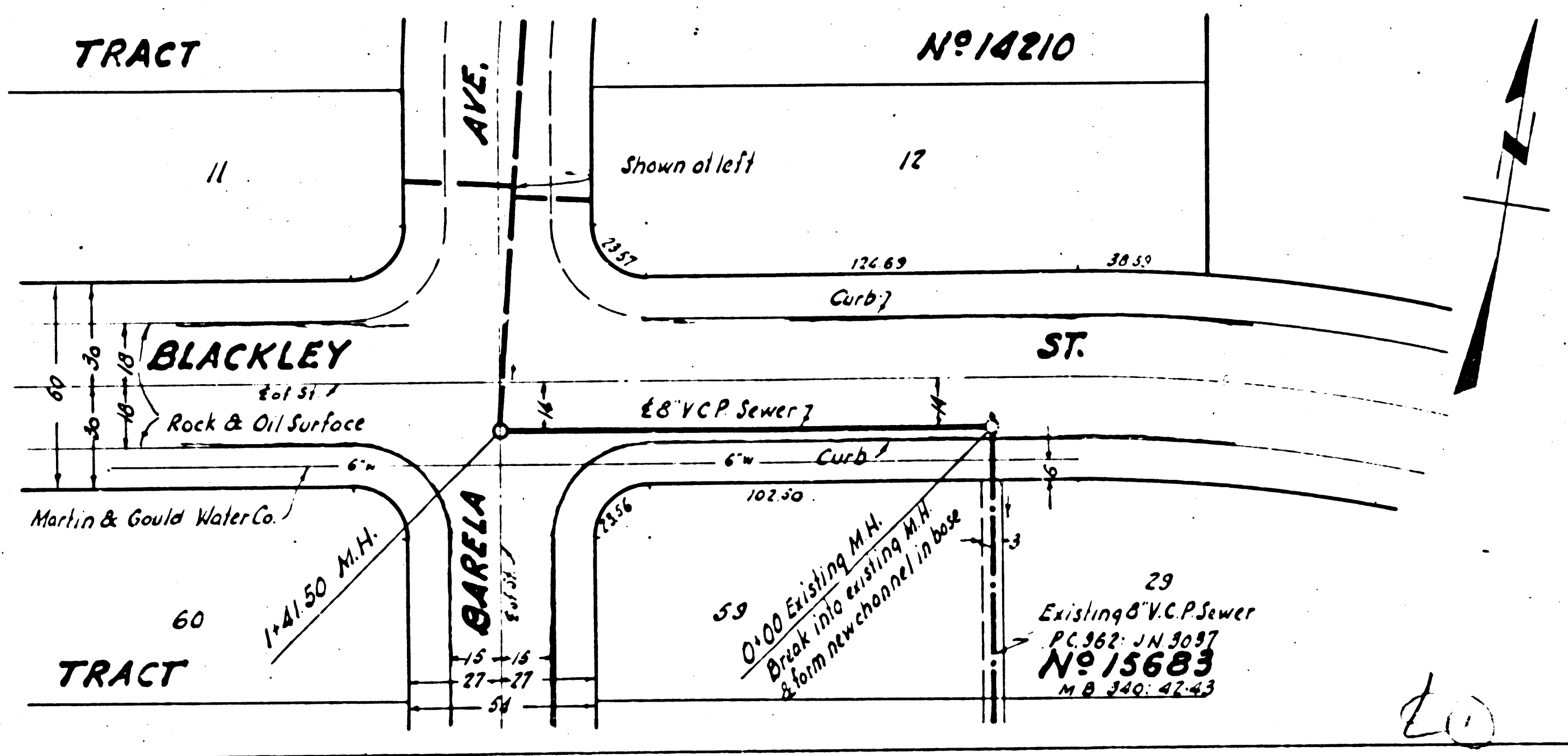
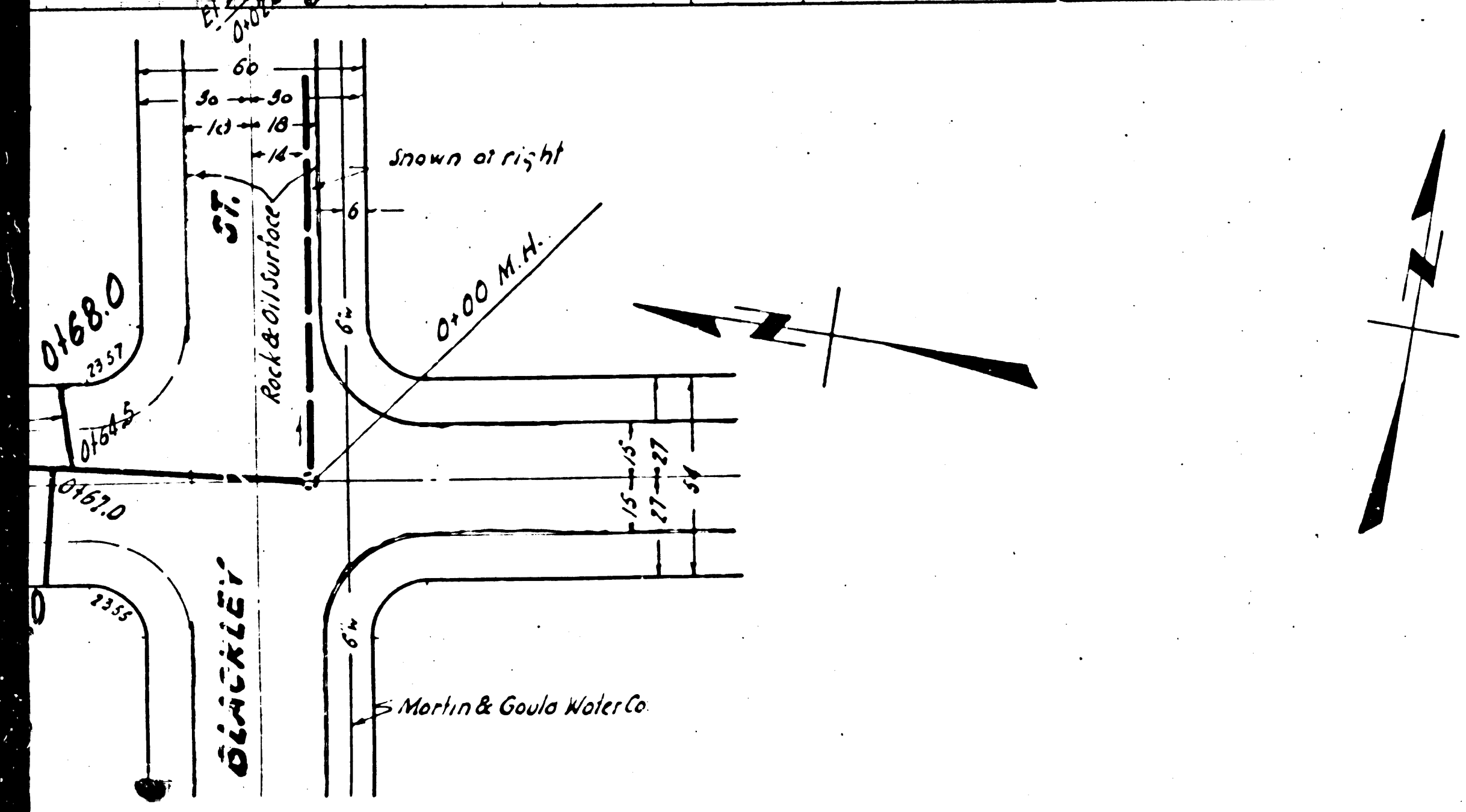
10,570
 345
 340
 335

STANDARD METRIC FEET AND OTHERS IN THE
 THIS STANDARD OF PRACTICE WITH RESPECT TO THE
 CONSTRUCTION OF SEWER LINES SHALL BE IN ACCORDANCE WITH THE
 REQUIREMENTS OF THE HEALTH DEPARTMENT OF THE CITY OF
 ST. LOUIS, MISSOURI, EXCEPT AS NOTED
 OTHERWISE ON THIS PLAN.

PEOPLE ALONG AND GRACE OF
 SAFFORD SEWERS
 TO BE CONSTRUCTED IN
BLACKLEY STREET
 BETWEEN BARELA AVE. AND A POINT 147.75' EASTERLY
BARELA AVENUE
 BETWEEN BLACKLEY ST. AND OLIVE ST.
OLIVE STREET
 BETWEEN EASTERLY AND WESTERLY LINES OF TRACT 14210

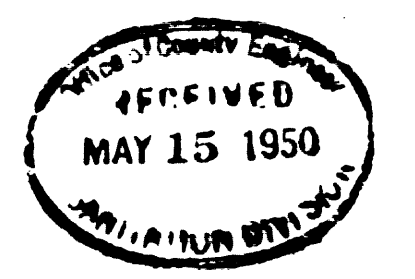
PRIVATE CONTRACT No. 1965
 W.S. 44
SHEET 1 OF 1 SHEETS

APRIL 1950
 PREPARED IN THE OFFICES OF
KARL F. TUTTLE
 BY *Karl F. Tuttle*



FOR LEGEND

APPROVED
E. E. Conrad
C. R. Compton
R. S. Kellar April 27, 1950



Trim Line

