

B.M. 1st Dept B.M. 51-207-236 E153958
 2nd Set F.20' in N.W. cor of Norwalk
 Boulevard & Washington Boulevard
 Marked B.M. 80 30

- Note: 1. Use standard strength pipe
 2. Use standard manhole frames and covers 5'-0-117
 3. Use cement mortar for all vitrified clay pipe joints
 4. Resurface of trench within paved areas to meet
 L.A. Co. Std. Dept. requirements in accordance with the permit
 5. All structures to be brick sewer structures 5'-0-117
 6. Construct house connections with invert at property
 line & below curb grade except as noted
 7. Encase 2' of sewer at points of interference with
 poles as per S-0-117

Note: No representative of the County Engineer will survey or lay out
 any portion of the work. The owners or their authorized representative
 will furnish the County Engineer with grade and stations of all house
 connections and Y branches and shall provide stakes for them at
 their proper locations with stationing plainly marked. Any change in
 location shall be requested in writing by the owners or their
 representative. No revisions will be made in these plans without
 approval of the County Engineer.

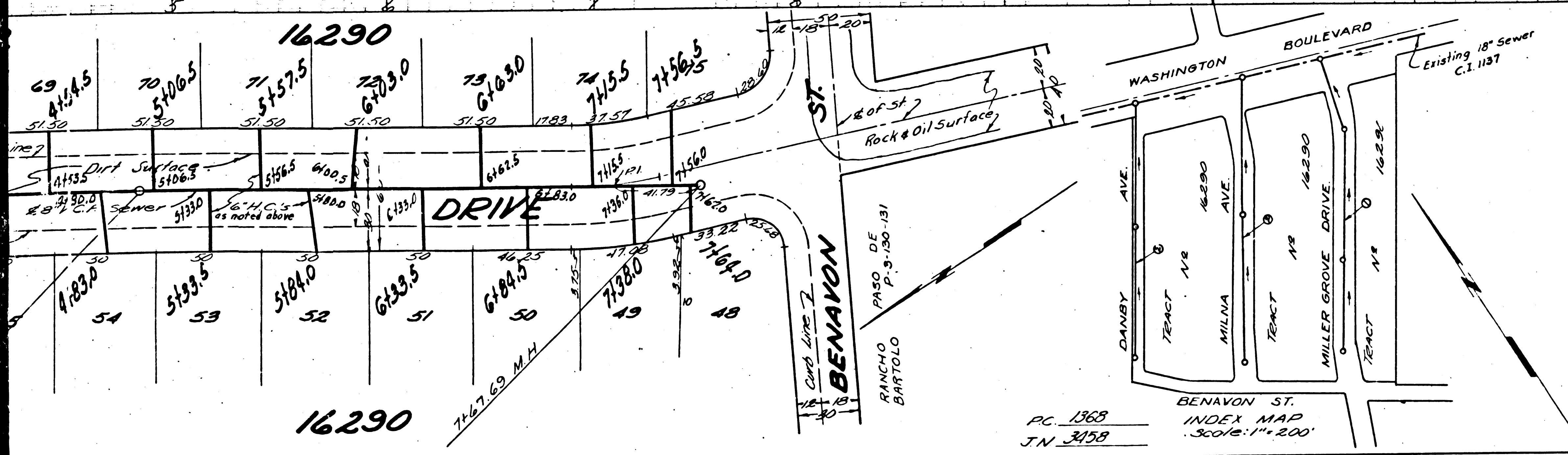
Note: Approval of this plan by the County of Los Angeles does not constitute
 a representation as to the accuracy of the location of, or the existence
 or non-existence of, any underground utility pipe or structure within the
 limits of this project.

10,886

PROFILE, ALIGNMENT AND GRADE OF
SANITARY SEWERS
 TO BE CONSTRUCTED IN
MILLERGROVE DRIVE
 BETWEEN WASHINGTON BOULEVARD AND BENAVON STREET,
 IN TRACT No. 16290, M.B.

PRIVATE CONTRACT NO. 1368
 W.S. 36
 SHEET 1 OF 2 SHEETS
 MAY 1950

SCALE Vert 1"=4'
 Horiz 1"=40'



- Note: Provide stakes on the property lines or property lines produced of
 right angles to the sewer line at the center line of each manhole.
- Note: 1. The grades to which this improvement is to be constructed are shown on the plans
 and profiles.
 2. Grade points for top of curb, center line of street, or center line of alley are shown by
 grades at profiles. At all points between designated points the grade shall be established
 so as to conform to a straight line drawn between designated points.
 3. Elevations are in feet above U.S.G.S. datum or mean sea level.
 4. This drawing and the data hereon are hereby made a part of the specifications.
 5. Work shall be constructed according to specifications on file in the office of the
 County Engineer.
 6. As soon as can be started, the contractor must obtain a permit to excavate in County
 streets from the L.A. Co. Eng. Dept. 211 So. Main St. and make a deposit with the
 County Engineer, 628 L.A. Co. Engineering Bldg. sufficient to cover cost of construction
 and record plans.

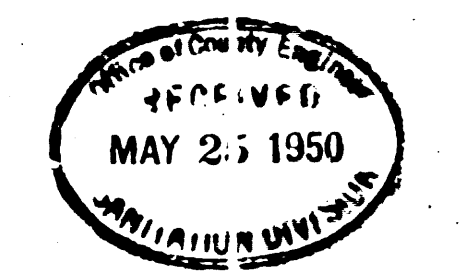
FOR LEGEND
 SEE PLAN NO. 5-0-64

PREPARED BY Leon W. Moran R.E. 3157

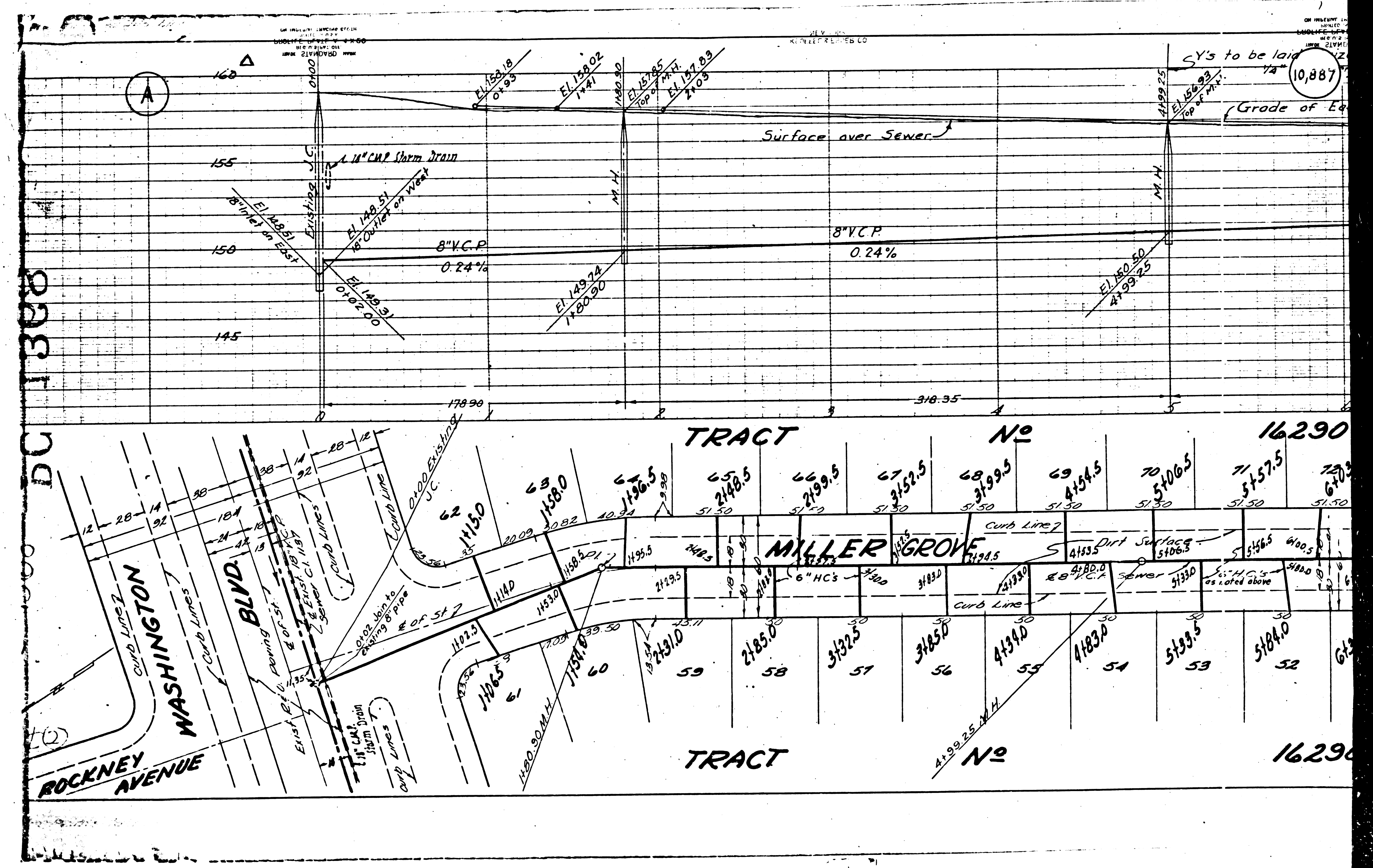
APPROVED [Signature]
 COUNTY ENGINEER

APPROVED [Signature]
 CHIEF ENGINEER OF COUNTY
 SANITATION DISTRICT NO. 18

CHECKED BY James T. Reuther 5-15-50
 OFFICE OF THE COUNTY
 ENGINEER 1250 C.E. NO. 7103



PC 1368
 J.N. 3458
 INDEX MAP
 Scale 1"=200'



DC 1300

10,887

TRACT No 16290

TRACT No 16290

MILLER GROVE

WASHINGTON BLVD
ROCKNEY AVENUE

A

10,887

Surface over Sewer

8" V.C.P. 0.24%

155

150

145

178.90

316.95

1150

1158.0

1196.5

1248.5

1299.5

1352.5

1409.5

1470.5

1535.5

1600.5

1192.5

1198.5

1208.5

1222.5

1240.5

1262.5

1289.5

1321.5

1359.5

1402.5

1165

1170

1180

1195

1215

1240

1270

1305

1345

1390

1165

1170

1180

1195

1215

1240

1270

1305

1345

1390

1165

1170

1180

1195

1215

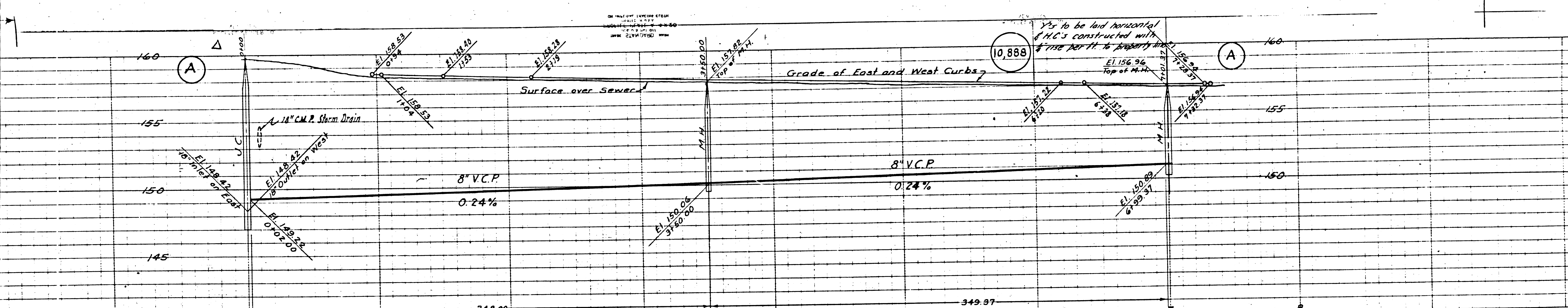
1240

1270

1305

1345

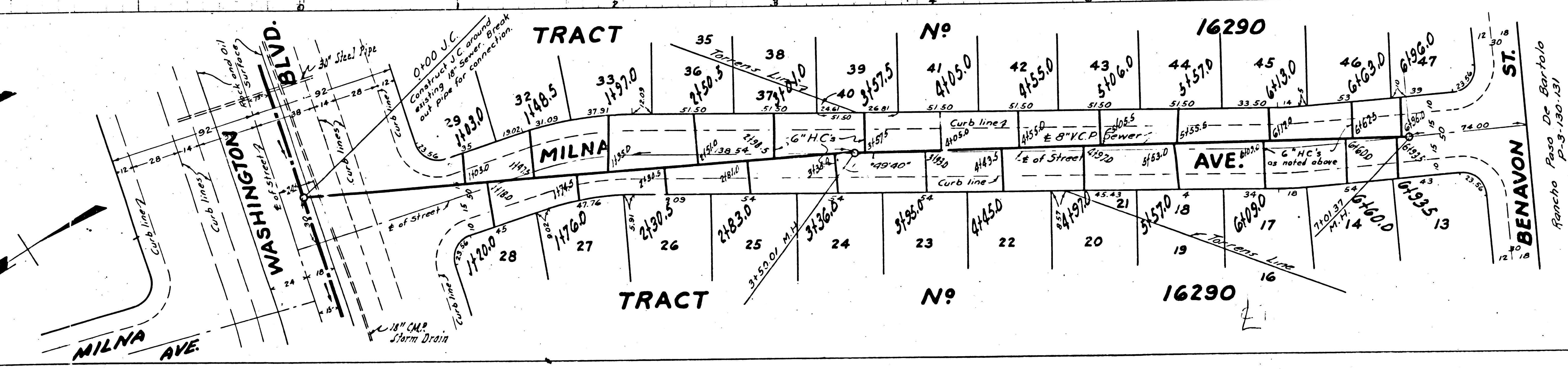
1390



PROFILE ALIGNMENT AND GRADE OF
SANITARY SEWERS
 TO BE CONSTRUCTED IN
 (A) MILNA AVENUE
 Between Washington Blvd. and Benavon St.
 (B) DANBY AVENUE
 Between Washington Blvd. and Benavon St.

PRIVATE CONTRACT N^o 1368
 W.S. 36
 SHEET 2 OF 2 SHEETS
 MAY 1950

Scale Vert. 1"=4'
 Horiz. 1"=40'



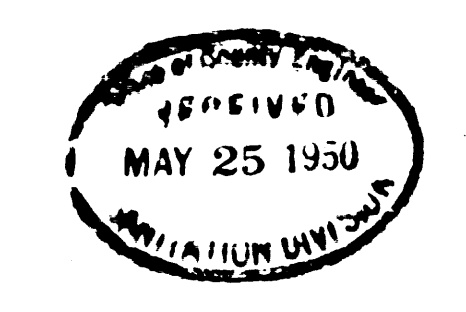
PREPARED BY Leon V. Moore R.E. 3157

APPROVED BY *Cliff Linn*
 COUNTY ENGINEER

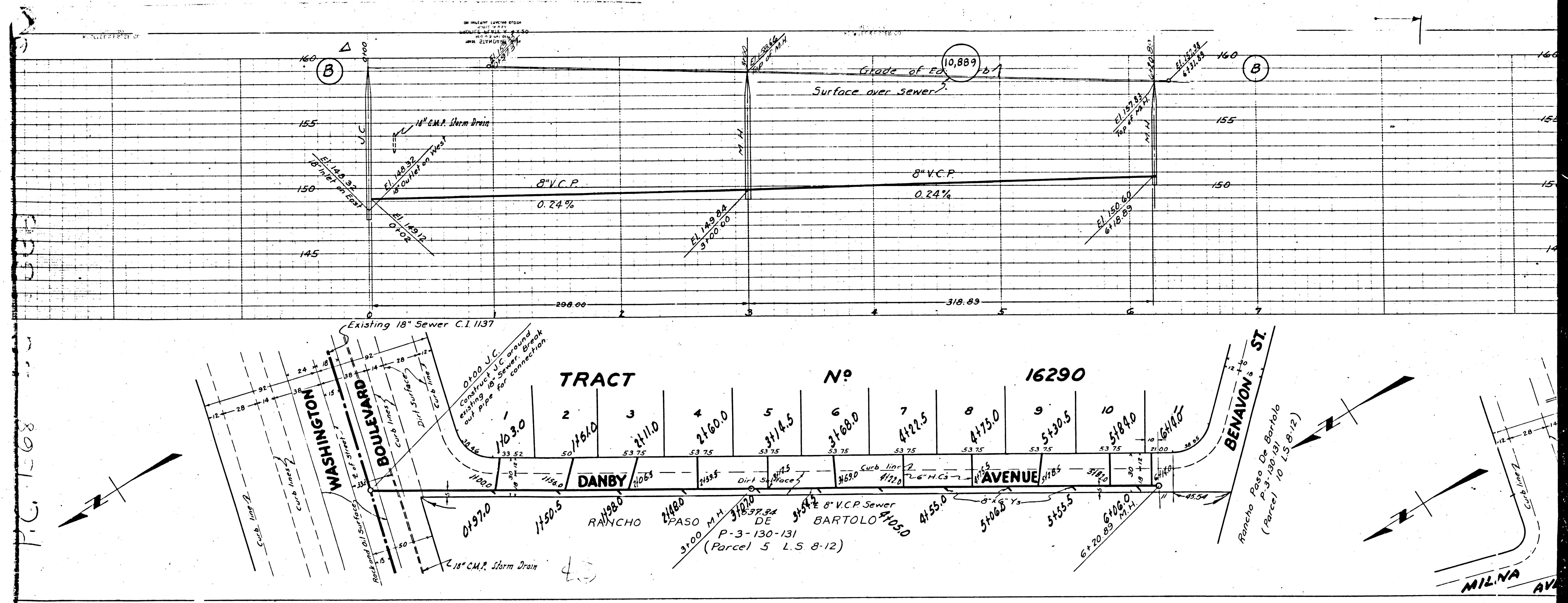
APPROVED BY *Edmund*
 CHIEF ENGINEER OF COUNTY
 SANITATION DISTRICT N^o 18

CHECKED BY James T. Redman S-18-1950
 OFFICE OF COUNTY ENGINEER CE. N^o 7103

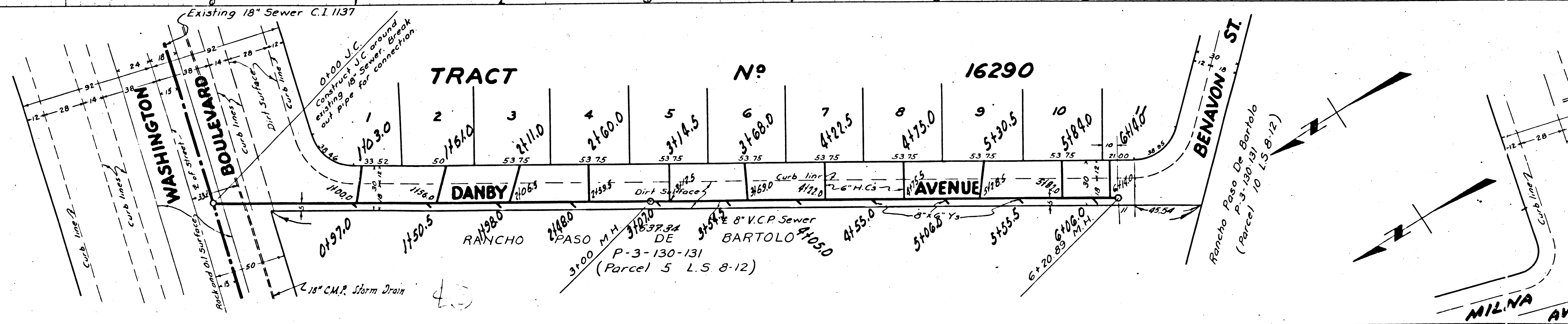
FOR CONSTRUCTION NOTES SEE SHEET 1



Trim Prints to this Line



P.C. 1568



TRACT No 16290

DANBY AVENUE

3100 M.H.
37.34'
P-3-130-131
(Parcel 5 L.S. 8-12)

Rancho Paso De Bartolo
(Parcel 10 L.S. 8-12)