

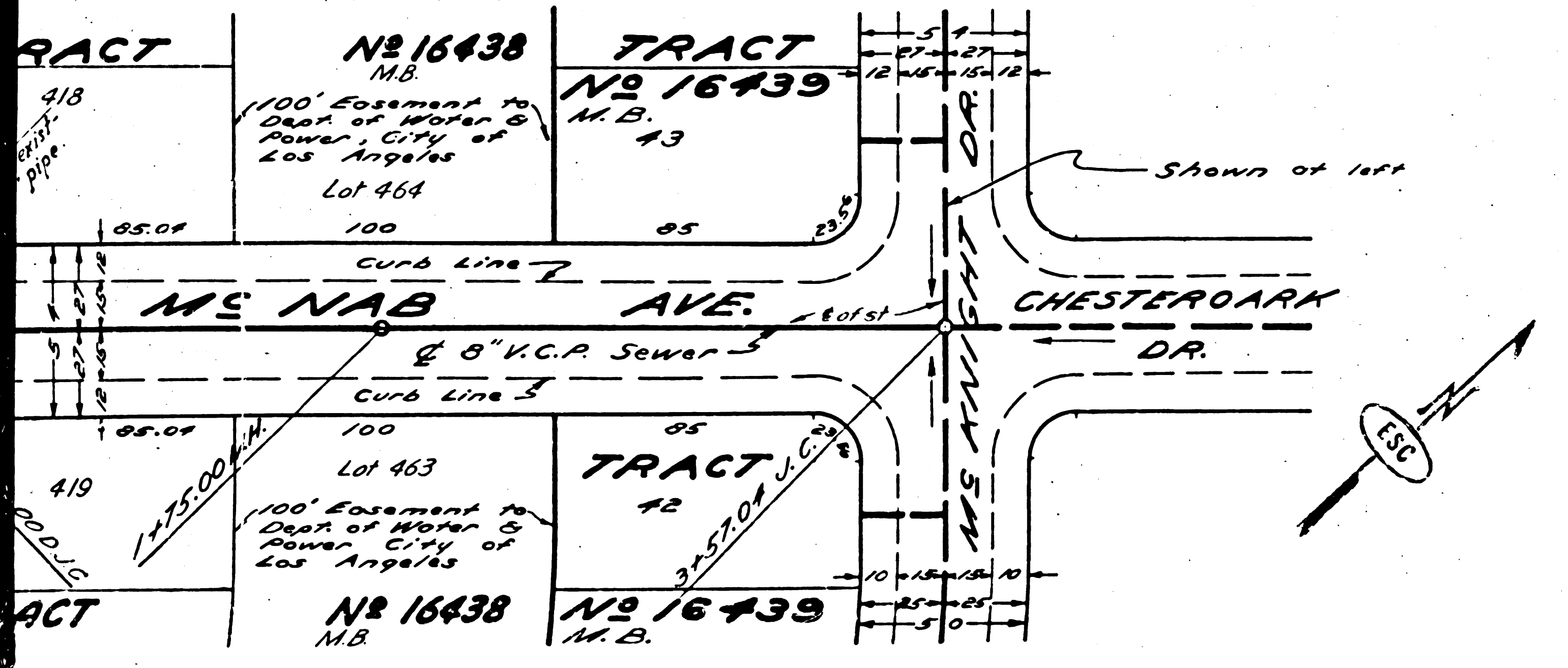
Q.M. 5/130-51 E133053  
C.S. Mon & Bellflower Blvd and  
Ranch Rd 2000' South of South St

- NOTE:  
NO REPRESENTATIVE OF THE COUNTY ENGINEER WILL SURVEY OR LAY OUT ANY PORTION OF THE WORK.  
THE OWNER OR HIS AUTHORIZED REPRESENTATIVE SHALL FURNISH THE COUNTY ENGINEER WITH GRADE SHEETS AND STATIONS FOR ALL HOUSE CONNECTIONS AND TIE BRANCHES AND SHALL PROVIDE STAKES FOR THEM AT THEIR PROPER LOCATIONS WITH STAKES PLAINLY MARKED. ANY CHANGE OF LOCATION SHALL BE REQUESTED IN WRITING BY THE OWNER OR HIS REPRESENTATIVE.  
NO REVISIONS SHALL BE MADE IN THESE PLANS WITHOUT APPROVAL OF THE COUNTY ENGINEER.
1. USE STANDARD MANHOLE FRAMES AND COVERS, 5'-11 1/2".
  2. USE STANDARD STRENGTH PIPE EXCEPT AS NOTED.
  3. USE CEMENT MORTAR FOR ALL VITRIFIED CLAY PIPE JOINTS.
  4. RESURFACE ALL TRENCH WITHIN PAVED AREA TO MEET L.A. COUNTY ROAD DEPT. REQUIREMENTS, IN ACCORDANCE WITH PERMIT.
  5. ENCASE FOUR FEET OF SEWER AT POINTS OF INTERFERENCE WITH POLES, 5'-11 1/2".
  6. HOUSE CONNECTIONS TO BE CONSTRUCTED WITH INVERT AT PROPERTY LINE 3' FEET BELOW CURB GRADE.
  7. ALL STRUCTURES SHALL BE BRICK SEWER STRUCTURES, 5'-10".
  8. PROVIDE STAKES ON THE PROPERTY LINES OR PROPERTY LINES PRODUCTION AT RIGHT ANGLES TO THE SEWER LINE AT THE CENTER LINE OF EACH MANHOLE.

PROPOSED ALIGNMENT AND GRADE OF  
SANITARY SEWERS  
TO BE CONSTRUCTED IN  
**McNAB AVENUE**  
BETWEEN TURNERSBURG DRIVE AND MCKNIGHT DRIVE  
**CHESTEROARK DRIVE**  
FROM MCKNIGHT DRIVE TO 888.35 FT NORTHWEST OF MCKNIGHT DRIVE  
MCKNIGHT DRIVE  
FROM 5/8 FT. SOUTHEAST OF CHESTEROARK DRIVE TO 188 FT. NORTHWEST OF CHESTEROARK DRIVE  
IN TRACT N° 16439

PRIVATE CONTRACT NO. 7384  
W. 537  
SHEET 1 OF 7 SHEETS  
SCALE: VERT 1" = 4'  
HOR 1" = 40'  
**SEPT. 1950**  
PREPARED IN THE OFFICES OF  
ENGINEERING SERVICE CORPORATION

BY *P. F. Roome*  
REG. C. 1740 (192)



ENGINEERING SERVICE CORPORATION						
1127 W WASHINGTON BLVD LOS ANGELES 15 CALIF PR. 7281						
REVISIONS						
NO.	DATE	DESCRIPTION				

TRACED BY *MS*  
DESGD BY *PMH*  
CK'D BY *PMH*  
SUBMITTED *PMH*

W.O. NO.	OWG. NO.	DATE	SCALE	L.S.	P.B.
5977-39		9-29-30	1/4" = 1' 0"		

NOTE:  
GRADES TO WHICH THIS IMPROVEMENT IS TO BE CONSTRUCTED ARE SHOWN ON PLANS AND PROFILES. GRADE POINTS FOR TOP OF CURB, CENTER LINE OF STREETS, OR CENTER LINE OF ALLEY ARE SHOWN BY CIRCLES ON PROFILES. AT ALL POINTS BETWEEN DESIGNATED POINTS THE GRADE SHALL BE ESTABLISHED SO AS TO CONFORM TO A STRAIGHT LINE DRAWN BETWEEN SAID DESIGNATED POINTS.  
ELEVATIONS ARE IN FEET ABOVE U.S.C. & G.S. DATUM ON MEAN SEA LEVEL.  
THIS DRAWING AND THE DATA HEREON ARE HEREBY MADE A PART OF THE SPECIFICATIONS.  
WORK SHALL BE CONSTRUCTED ACCORDING TO SPECIFICATIONS ON FILE IN THE OFFICE OF THE COUNTY ENGINEER AND SHALL BE PROSECUTED ONLY IN THE PRESENCE OF THE COUNTY ENGINEER.  
BEFORE WORK CAN BE STARTED THE CONTRACTOR MUST OBTAIN A PERMIT TO EXCAVATE IN COUNTY STREETS FROM THE L.A. COUNTY ROAD DEPT. 211 SO MAIN ST. AND MAKE A DEPOSIT WITH THE COUNTY ENGINEER, 878 COUNTY ENGINEERING BUILDING SUFFICIENT TO COVER THE COST OF CONSTRUCTION INSPECTION AND RECORD PLANS.  
APPROVAL OF THIS PLAN BY THE COUNTY OF LOS ANGELES DOES NOT CONSTITUTE A REPRESENTATION AS TO THE ACCURACY OF THE LOCATION OR OF THE EXISTENCE OR NON-EXISTENCE OF ANY UNDERGROUND UTILITY, PIPE, OR STRUCTURE WITHIN THE LIMITS OF THIS PROJECT. THIS NOTE APPLIES TO ALL SHEETS, COUNTY OF LOS ANGELES, CALIFORNIA

JAN 12 1951

FOR LEGEND  
SEE PLAN NO. 54-44

APPROVED *Edmund*  
COUNTY ENGINEER

APPROVED BY *A. J. Brown*  
OFFICE ENGINEER  
ENGINEER OF COUNTY  
SANITATION DISTRICT NO.

CHECKED *E. J. ...*  
OFFICE OF COUNTY ENGINEER, REG. C. E. NO. 7075

MCKNIGHT DRIVE  
CHESTEROARK DRIVE  
McNAB AVENUE  
N° 16439

Checked 4-17-51 McKnight

40

72/7



