

- (10,720)
- USE STANDARD STRENGTH PIPE EXCEPT AS NOTED.
  - USE CEMENT MORTAR FOR ALL VITRIFIED CLAY PIPE JOINTS.
  - ENCASE FOUR FEET OF JEWEL AT POINTS OF INTERFERENCE WITH POLES AS PER S.A.U.S.
  - CONSTRUCT HOUSE CONNECTIONS WITH INVERT AT FINISH LINE - 6" FEET BELOW CURB GRADE EXCEPT AS NOTED.
  - ALL STRUCTURES SHALL BE BRICK SEWER STRUCTURES AS PER PLAN NO. S-1104.
  - USE STANDARD MANHOLE FRAMES AND COVERS AS PER PLAN NO. S-1117.
  - RESURFACE ALL TRENCHES WITHIN PAVED AREA TO MEET LOS ANGELES COUNTY ROAD DEPT. OR STATE HIGHWAY REQUIREMENTS.
  - PROVIDE STAKES ON THE PROPERTY LINES OR PROPERTY LINES PRODUCED, AT RIGHT ANGLES TO THE SEWER LINE AT THE CENTER LINE OF EACH MANHOLE.
  - NO REVISIONS SHALL BE MADE IN THESE PLANS WITHOUT APPROVAL OF THE COUNTY ENGINEER.
  - NO REPRESENTATIVE OF THE COUNTY ENGINEER WILL SURVEY OR LAY OUT ANY PORTION OF THE WORK.
  - THE OWNER OR HIS AUTHORIZED REPRESENTATIVE SHALL FURNISH THE COUNTY ENGINEER WITH GRADE SHEETS AND STATIONS OF ALL HOUSE CONNECTIONS AND BRANCHES, AND SHALL PROVIDE STAKES FOR THEM AT THEIR PROPER LOCATIONS WITH STATIONING PLAINS MARKED.
  - ANY CHANGE OF LOCATION SHALL BE REQUESTED IN WRITING BY THE OWNER OR HIS REPRESENTATIVE.

PROFILE ALIGNMENT AND GRADE OF  
**SANITARY SEWERS**  
 TO BE CONSTRUCTED IN

TRA: 1659  
 ON  
**DEVERON DRIVE**  
 BETWEEN GUIRADO ST AND A POINT 570.32 FT EAST ON DEVERON AVE.

PRIVATE CONTRACT NO. 1387  
 W. S. 37

SHEET 1 OF 1 SHEETS

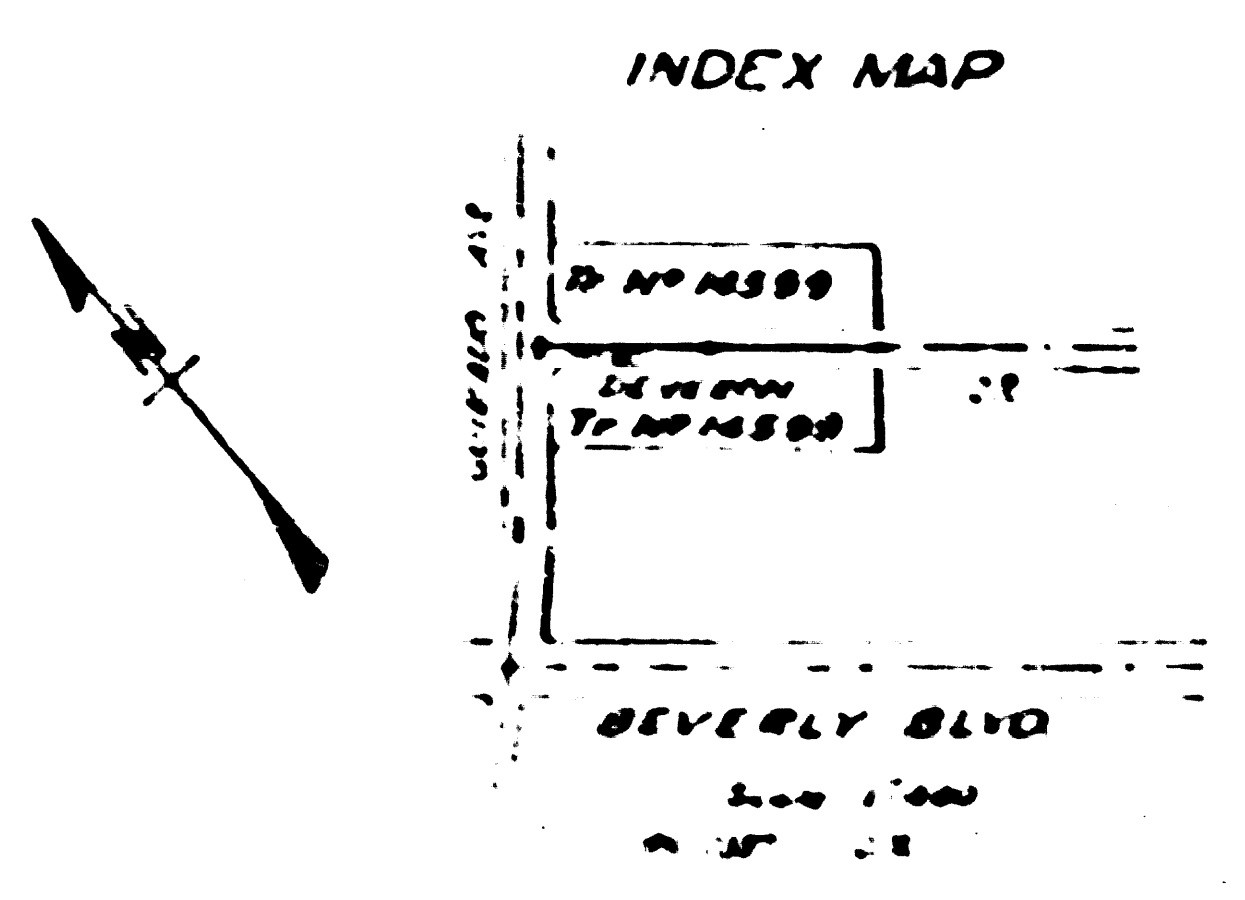
SCALE: 1" = 10' HORIZ.  
 1" = 4' VERT.

MAY 1950

PREPARED IN THE OFFICES OF  
**KEMMERER ENG. CO.**  
 BY John W. Kemmerer  
 C.E. & S.E.

FOR LEGEND  
 SEE PLAN NO. S-1104

APPROVED  
 MAY 15 1950



SHADES IN THIS SPECIFICATION ARE TO BE CONSTRUCTED AND SHOWN ON PLANS AND THE BENCH MARKS FOR THE CURB CENTER LINE OF STREET OR CENTER LINE OF ALLEY ARE SHOWN BY DASHES ON PROFILES AT ALL POINTS BETWEEN DEFINED POINTS THE GRADE SHALL BE SHOWN BY SOLID TO CORRESPOND TO A STRAIGHT LINE BETWEEN DEFINED POINTS.

STATIONS ARE IN FEET ABOVE U.S.C. & G.S. MEAN SEA LEVEL.

THE ENGINEER AND THE OWNER HEREBY AGREE TO HOLD EACH OTHER HARMLESS FROM AND AGAINST ALL CLAIMS, DAMAGES, LOSSES AND EXPENSES THAT MAY BE INCURRED BY EITHER PARTY IN CONNECTION WITH THE WORK HEREUNDER.

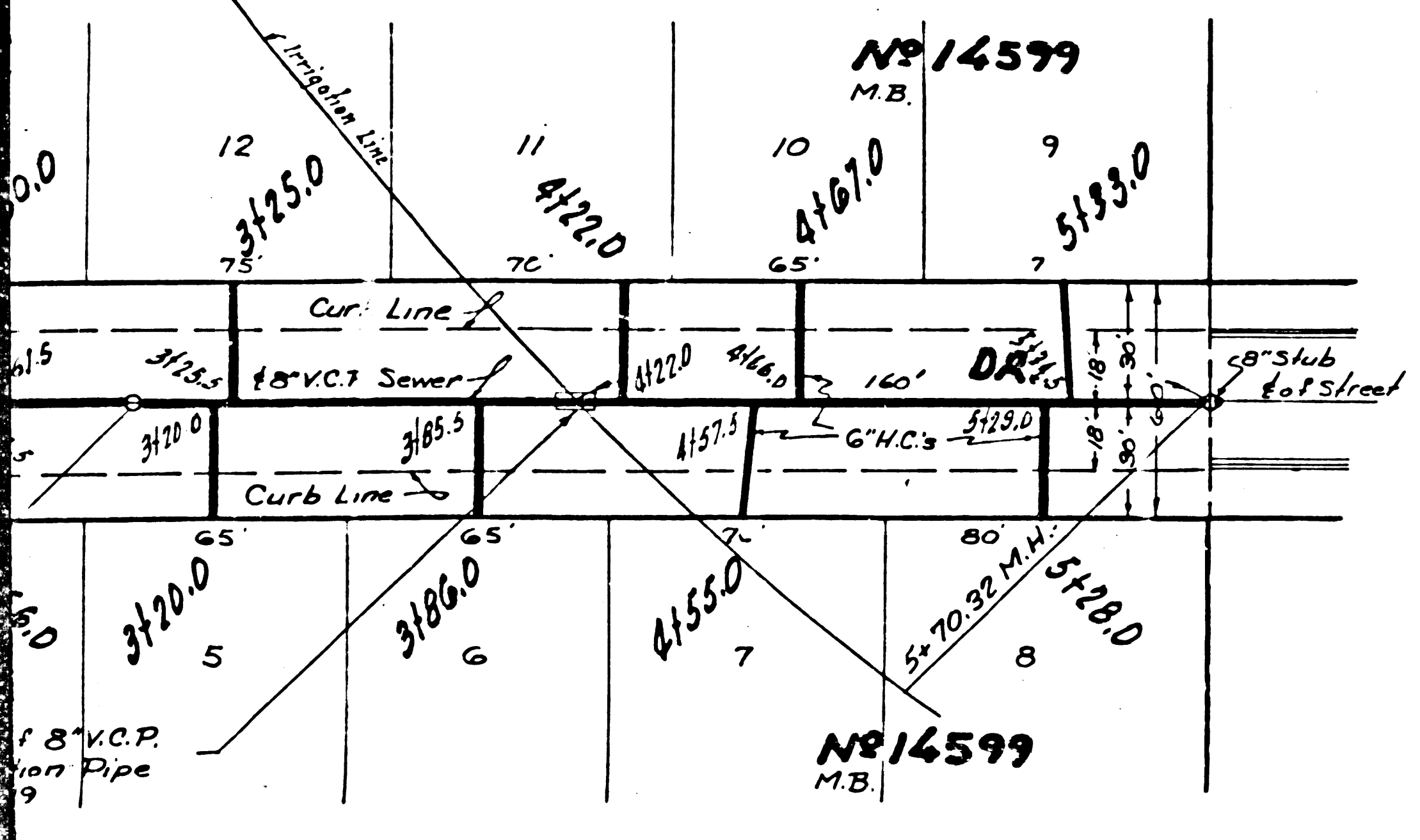
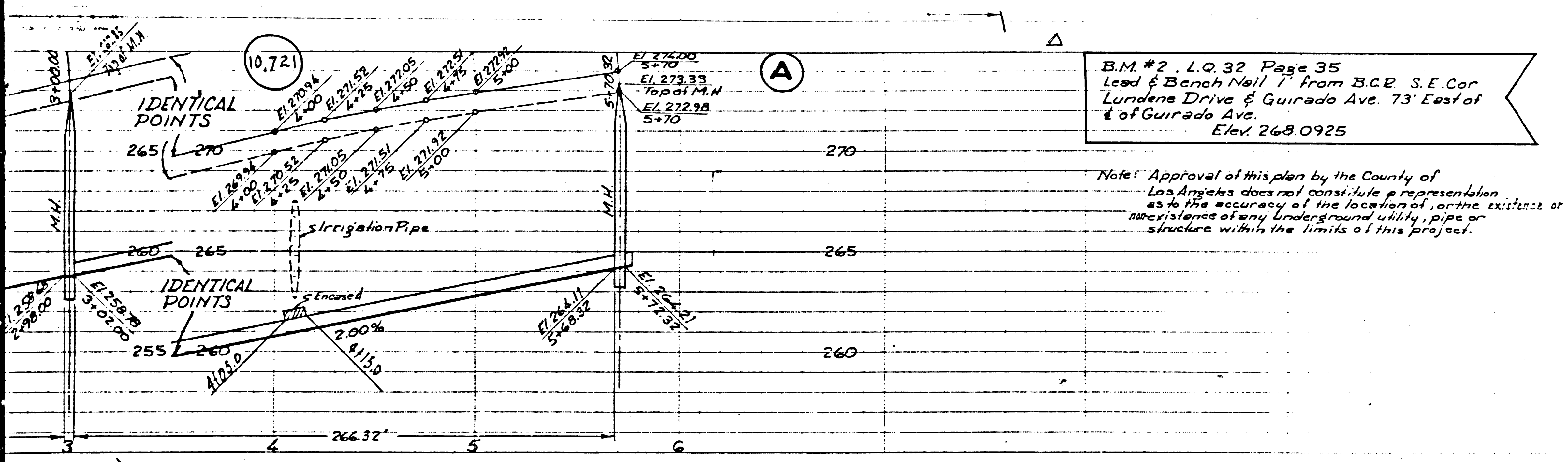
NO WORK SHALL BE STARTED WITHOUT A PERMIT TO EXCAVATE FROM THE COUNTY ENGINEER AND THE CITY ENGINEER AND A PERMIT TO OCCUPY THE PUBLIC WAY FROM THE COUNTY ENGINEER AND THE CITY ENGINEER. SUFFICIENT TO COVER THE PERMIT OF WORK IS TO BE FURNISHED TO THE COUNTY ENGINEER AND THE CITY ENGINEER.

COUNTY OF LOS ANGELES, CALIFORNIA

APPROVED  
 MAY 15 1950

CHECKED BY  
 MAY 15 1950

(11)



10,720

USE STANDARD STRENGTH PIPE EXCEPT AS NOTED  
USE CEMENT MORTAR FOR ALL VITRIFIED CLAY PIPE JOINTS  
ENCASE FOUR FEET OF SEWER AT POINTS OF INTERFERENCE WITH POLES AS PER S.A. 113  
CONSTRUCT HOUSE CONNECTIONS WITH INVERT AT PRE-LINE 5' FEET BELOW CURB GRADE EXCEPT AS NOTED  
ALL STRUCTURES SHALL BE BRICK SEWER STRUCTURES AS PER PLAN NO. S-2-104  
USE STANDARD MANHOLE FRAMES AND COVERS AS PER PLAN NO. S-2-117

RESURFACE ALL TRENCHES WITHIN LAYED AREA TO MEET LOS ANGELES COUNTY ROAD DEPT. OR STATE HIGHWAY REQUIREMENTS  
PROVIDE STAKES ON THE PROPERTY LINES OR PROPERTY LINES PRODUCED AT RIGHT ANGLES TO THE SEWER LINE AT THE CENTER LINE OF EACH MANHOLE.

NO REVISIONS SHALL BE MADE IN THESE PLANS WITHOUT APPROVAL OF THE COUNTY ENGINEER  
NO REPRESENTATIVE OF THE COUNTY ENGINEER WILL SURVEY OR LAY OUT ANY PORTION OF THE WORK  
THE OWNER OR HIS AUTHORIZED REPRESENTATIVE SHALL FURNISH THE COUNTY ENGINEER WITH GRADE SHEETS AND STATIONS OF ALL HOUSE CONNECTIONS AND Y BRANCHES, AND SHALL PROVIDE STAKES FOR THEM AT THEIR PROPER LOCATIONS WITH STATIONING PLAINLY MARKED. ANY CHANGE OF LOCATION SHALL BE REQUESTED IN WRITING BY THE OWNER OR HIS REPRESENTATIVE.

PROFILE ALIGNMENT AND GRADE OF  
**SANITARY SEWERS**  
TO BE CONSTRUCTED IN  
T.R. # 14599  
ON  
DEVERON DRIVE  
BETWEEN GUIRADO ST. AND A POINT 570.32 FT. EAST ON DEVERON AVE.

PRIVATE CONTRACT NO. 1387  
W. S. 37  
SHEET 1 OF 1 SHEETS  
SCALE: 1"=400' HORIZ. 1"=40'  
MAY 1950  
PREPARED IN THE OFFICES OF  
**KEMMERER ENG. CO.**  
BY: John W. Kemmerer  
REG. C. E. NO. 272

FOR LEGEND  
SEE PLAN NO. S-2-84

RECEIVED  
MAY 15 1950  
PLANNING DIVISION

NOTE  
GRADES TO WHICH THIS IMPROVEMENT IS TO BE CONSTRUCTED ARE SHOWN ON PLANS AND PROFILE GRADE POINTS FOR TOP OF CURB, CENTER LINE OF STREET OR CENTER LINE OF ALLEY ARE SHOWN BY TICKS ON PROFILES. AT ALL POINTS BETWEEN DESIGNATED POINTS THE GRADE SHALL BE ESTABLISHED AS TO CONFORM TO A STRAIGHT LINE DRAWN BETWEEN SAID DESIGNATED POINTS.  
ELEVATIONS ARE IN FEET ABOVE U. S. G. S. DATUM OR MEAN SEA LEVEL.

THIS DRAWING AND THE DATA HEREON ARE HEREBY MADE A PART OF THE SPECIFICATIONS FOR THE WORK TO BE CONSTRUCTED ACCORDING TO SPECIFICATIONS ON FILE IN THE OFFICE OF THE COUNTY ENGINEER AND SHALL BE PROSECUTED ONLY IN THE PRESENCE OF THE COUNTY ENGINEER BEFORE WORK CAN BE STARTED. THE CONTRACTOR MUST OBTAIN A PERMIT TO EXCAVATE IN COUNTY STREETS FROM THE L. A. COUNTY ROAD DEPT. 2110 MAIN ST., LOS ANGELES AND MAKE A DEPOSIT WITH THE COUNTY ENGINEER ROOM 830 AT 107 W. END STREET, SUFFICIENT TO COVER THE COST OF CONSTRUCTION INSPECTION AND RECORD PLANS.  
IF WORK IS TO BE DONE IN A STATE HIGHWAY, A PERMIT MUST BE OBTAINED FROM THE STATE OF CALIFORNIA, DIVISION OF HIGHWAYS, 808 STATE BUILDING AFTER MAKING THE DEPOSIT WITH THE COUNTY ENGINEER.

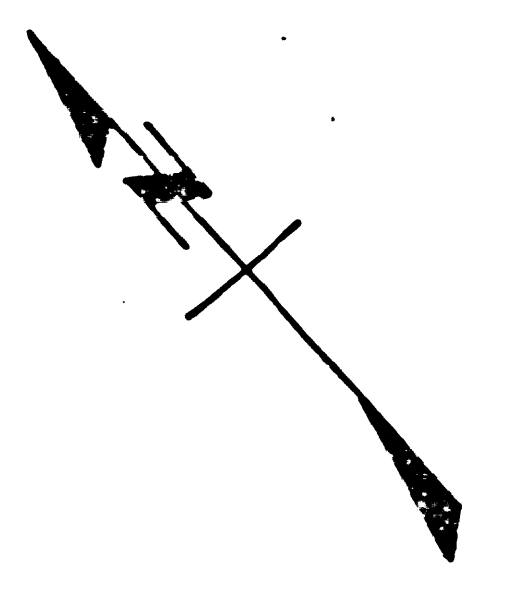
COUNTY OF LOS ANGELES, CALIFORNIA

APPROVED *Allegany*  
CHIEF DEPT. COUNTY ENGINEER

CHECKED BY: J. M. MOORE  
MAY 15 1950

411

P.C. 1387



②

