

- 11,492
- USE STANDARD MANHOLE FRAMES AND COVERS.
 - USE STANDARD STRENGTH PIPE (EXCEPT AS NOTED).
 - USE SLOPES AS SHOWN FOR ALL EXCEPT 4:1 AND 6:1 SLOPES.
 - RESURFACE ALL TRENCH WITHIN PAVED AREA TO MEET L.A. COUNTY ENGINEER'S REQUIREMENTS.
 - CONSTRUCT ROADS CONNECTIONS WITH INVERT AT PROPERTY LINE (1) FROM "BLOW CURB GRADE" (EXCEPT AS NOTED).
 - GRADE FOUR FEET OF SEWER AT POINTS OF INTERFERENCE WITH WELLS (AS PER S-11).
 - ALL STRUCTURES SHALL BE BUILT ABOVE GRADE.
 - CONSTRUCT TOPS OF ALL STRUCTURES IN RIGHTS OF WAY 6 INCHES ABOVE FINISHED GRADE.
- NOTE: NO REPRESENTATIVE OF THE COUNTY ENGINEER WILL SURVEY OR LAY OUT ANY PORTION OF THE WORK. THE OWNER OR HIS AUTHORIZED REPRESENTATIVE SHALL FURNISH THE COUNTY ENGINEER WITH GRADE SHEETS AND STATUTES OF ALL BODIES CONCERNED AND SHALL PROVIDE STAKES FOR TREES AT THEIR PROPER LOCATIONS WITH STATIONING PLAINLY MARKED. ANY CHANGE IN LOCATION SHALL BE INDICATED IN RED INK AT THE OWNER'S OR HIS REPRESENTATIVE'S EXPENSE. PROVIDE STAKES ON THE PROPERTY LINES OR PROPERTY LINES PROPOSED AT SEVEN FEET TO THE SEWER LINE AT THE CENTER LINE OF EACH SEWER. NO REVISIONS SHALL BE MADE IN THESE PLANS WITHOUT APPROVAL OF THE COUNTY ENGINEER.

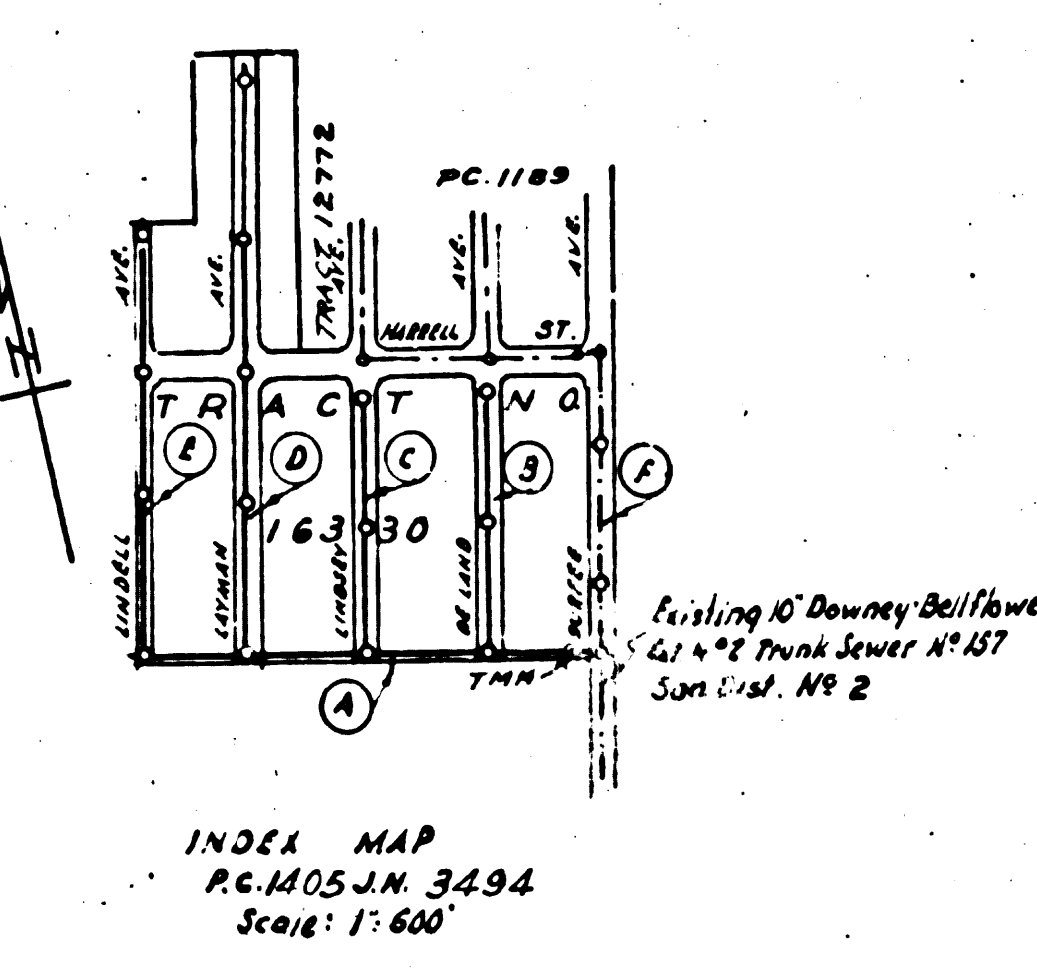
PROFILE ALIGNMENT AND GRADE OF SANITARY SEWERS TO BE CONSTRUCTED IN DURFEE AVENUE, DE LAND AVENUE, LINDSEY AVENUE, LAYMAN AVENUE, LINDELL AVENUE
 BETWEEN NORTH LINE AND SOUTH LINE TR. 16330
SANITARY SEWER RIGHT OF WAY
 IN TRACT NO. 16330

PRIVATE CONTRACT No. 1405
 W.S. 36
SHEET 1 OF 1 SHEETS

SCALE: VERT. 1" = 4'
 HORIZ. 1" = 40'

PREPARED IN THE OFFICES OF
SEABOARD ENGINEERING CO.
 By *Mark A. Rubin*
 M.W. 2053

MAY 1950



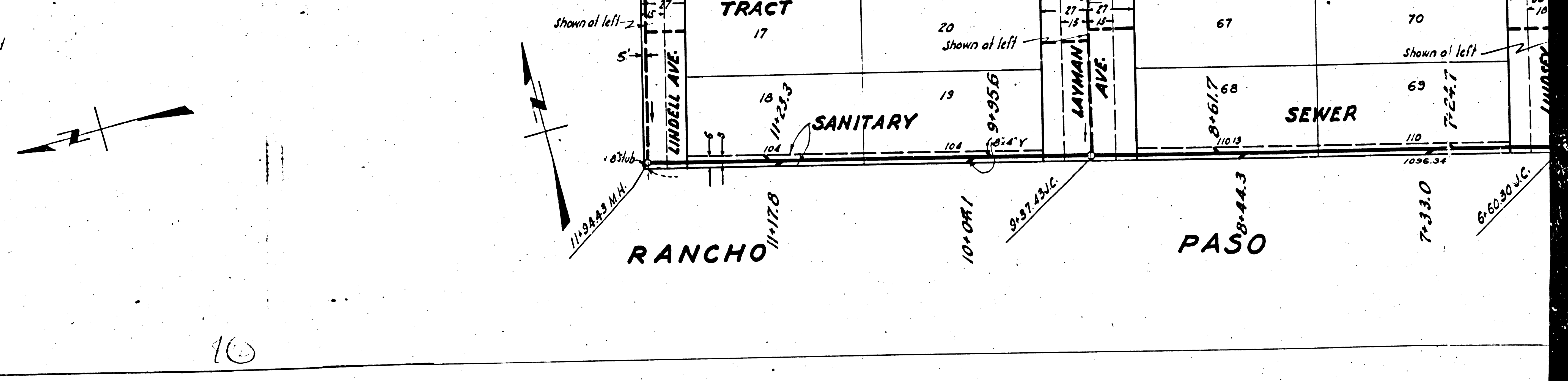
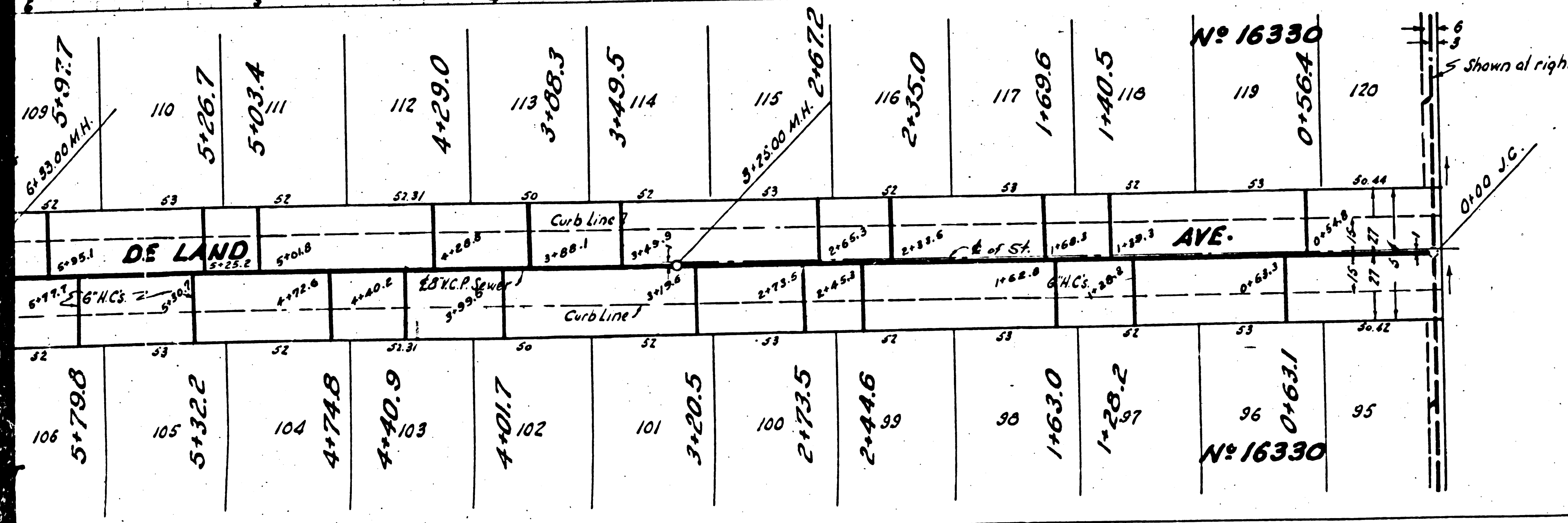
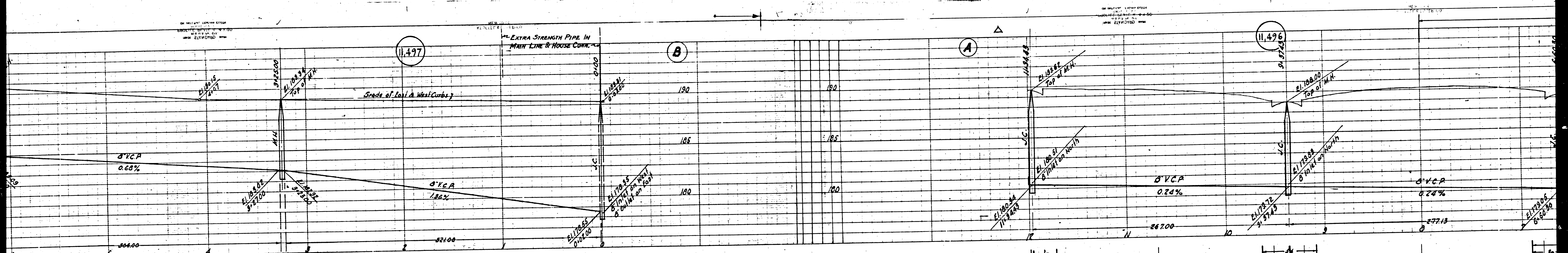
FOR LEGEND
 SEE PLAN No. 1405
 GRADES TO WHICH THIS IMPROVEMENT IS TO BE CONSTRUCTED ARE SHOWN IN PLANS AND PROFILES.
 GRADE POINTS FOR TOP OF CURB, CENTER LINE OF STREET OR CENTER LINE OF ALLEY, FROM SEWER MAIN, SHALL BE COPIED AND ALL POINTS BETWEEN THE GRADE POINTS SHALL BE INTERPOLATED TO COMPOSE A SMOOTH LINE. GRADE SHALL BE INDICATED BY NUMBER.
 ELEVATIONS ARE IN FEET ABOVE 2.00 A DATUM OR MEAN SEA LEVEL.
 THIS DRAWING AND THE DATA HEREON ARE HEREBY MADE A PART OF THE SPECIFICATIONS.
 WORK SHALL BE CONDUCTED ACCORDING TO SPECIFICATIONS ON FILE IN THE OFFICE OF THE COUNTY ENGINEER AND SHALL BE PROSECUTED ONLY IN THE PRESENCE OF THE COUNTY ENGINEER.
 BEFORE WORK CAN BE STARTED THE CONTRACTOR MUST OBTAIN A PERMIT TO EXCAVATE IN COUNTY STREETS FROM THE L.A. COUNTY ROAD DEPARTMENT. IN ROUTE MAIN STREET AND MAKE A DEPOSIT WITH THE COUNTY ENGINEER OF COUNTY ENGINEERING BUILDING, SUFFICIENT TO COVER THE COST OF CONSTRUCTION INSPECTION AND RECORD PLANS.
 APPROVAL OF THIS WORK BY THE ENGINEER OF HIGHWAYS IS NOT VALID UNTIL AFTER BEARING THE DEPOSIT WITH THE COUNTY ENGINEER.
 APPROVAL OF THIS WORK BY THE ENGINEER OF HIGHWAYS IS NOT VALID UNTIL AFTER BEARING THE DEPOSIT WITH THE COUNTY ENGINEER.
 APPROVAL OF THIS WORK BY THE ENGINEER OF HIGHWAYS IS NOT VALID UNTIL AFTER BEARING THE DEPOSIT WITH THE COUNTY ENGINEER.
 APPROVAL OF THIS WORK BY THE ENGINEER OF HIGHWAYS IS NOT VALID UNTIL AFTER BEARING THE DEPOSIT WITH THE COUNTY ENGINEER.
 APPROVAL OF THIS WORK BY THE ENGINEER OF HIGHWAYS IS NOT VALID UNTIL AFTER BEARING THE DEPOSIT WITH THE COUNTY ENGINEER.
 APPROVAL OF THIS WORK BY THE ENGINEER OF HIGHWAYS IS NOT VALID UNTIL AFTER BEARING THE DEPOSIT WITH THE COUNTY ENGINEER.

COUNTY OF LOS ANGELES, CALIFORNIA
 APPROVED: *Mark A. Rubin*
 COUNTY ENGINEER
 APPROVED: *G. K. Compton*
 ACTING COUNTY ENGINEER
 SANITATION DISTRICT NO. 2

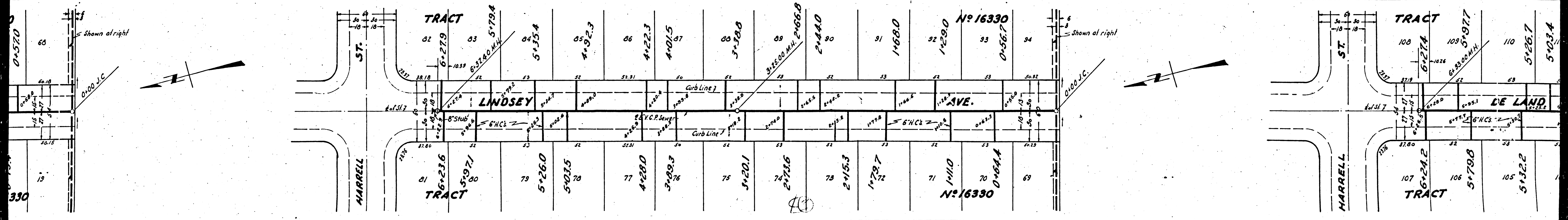
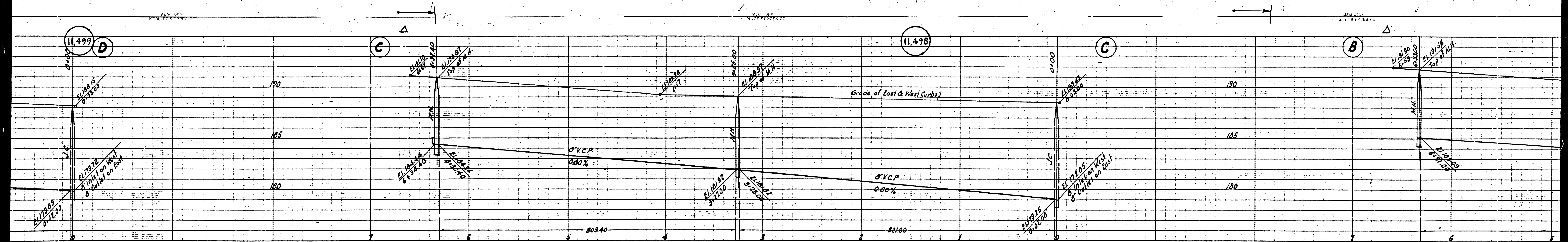
CHECKED: *John J. Kelly*
 OFFICE OF COUNTY ENGINEER & E. O. 7675

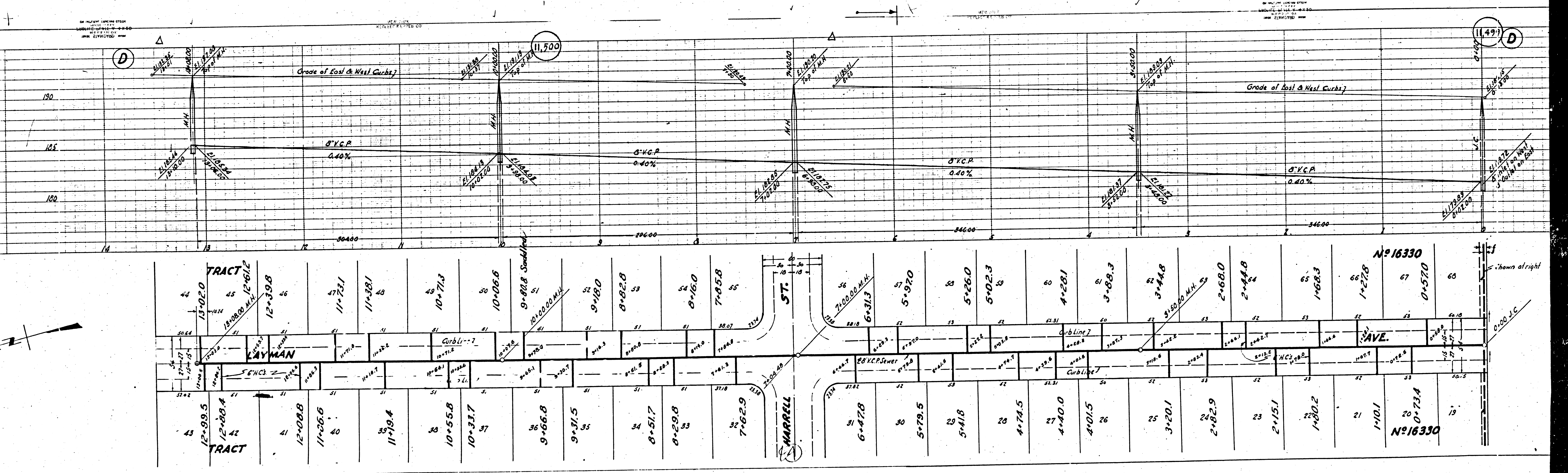
RECEIVED
 AUG 21 1950
 PHILIP H. HARRIS

6-11-50
 Office of County Engineer & E. O. 7675



10





44	45	46	47	48	49	50	51	52	53	54	55	56	57	58	59	60	61	62	63	64	65	66	67	68		
13+02.0	12+61.2	12+39.8	11+73.1	11+38.1	10+71.3	10+06.6	9+88.8 Saddle	10+10.00 M.H.	9+18.0	8+82.8	8+16.0	7+85.8	7+00.00 M.H.	6+31.3	5+97.0	5+26.0	5+02.3	4+28.1	3+88.3	3+44.8	3+50.00 M.H.	2+68.0	2+44.8	1+68.3	1+27.8	0+57.0
43	42	41	40	39	38	37	36	35	34	33	32	31	30	29	28	27	26	25	24	23	22	21	20	19		
12+99.5	12+80.4	12+08.8	11+26.6	11+19.4	10+55.8	10+33.7	9+66.8	9+31.5	8+51.7	8+29.8	7+62.9	6+47.8	5+79.5	5+41.8	4+74.5	4+40.0	4+01.5	3+20.1	2+82.9	2+15.1	1+80.2	1+10.1	0+73.4			

BY NEW YORK STATE
ENGINEERING BOARD
EXHIBIT NO. 12-1920
DATE 12-19-20

BY NEW YORK STATE
ENGINEERING BOARD
EXHIBIT NO. 12-1920
DATE 12-19-20

BY NEW YORK STATE
ENGINEERING BOARD
EXHIBIT NO. 12-1920
DATE 12-19-20

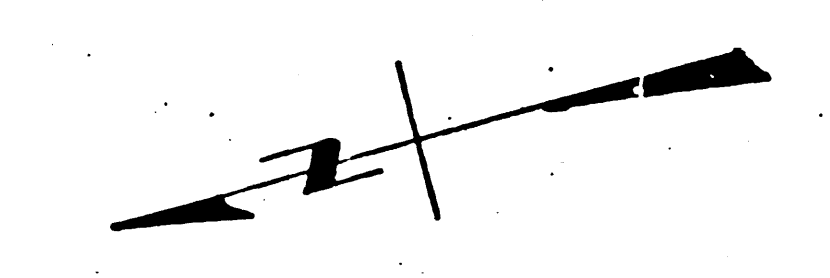
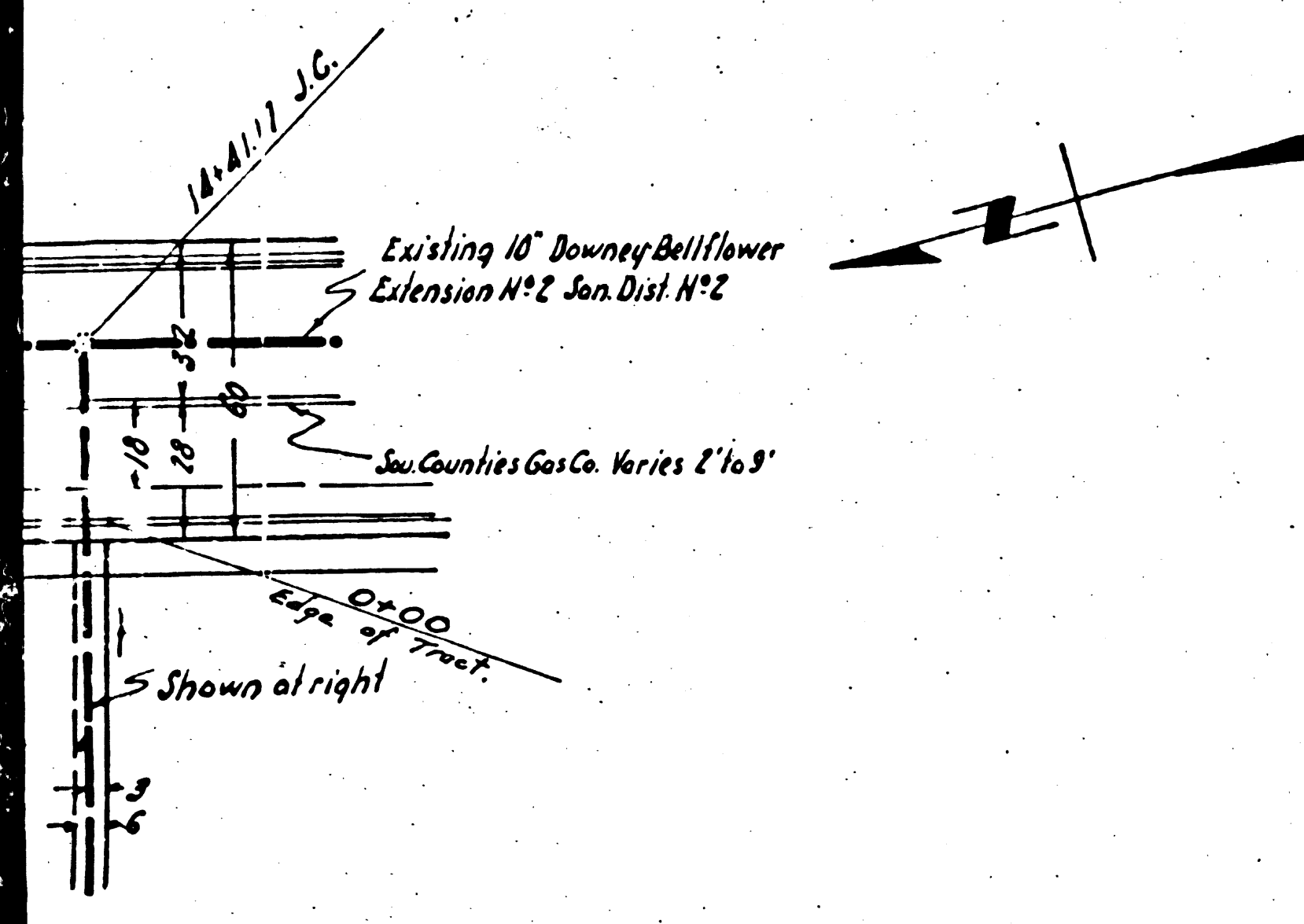
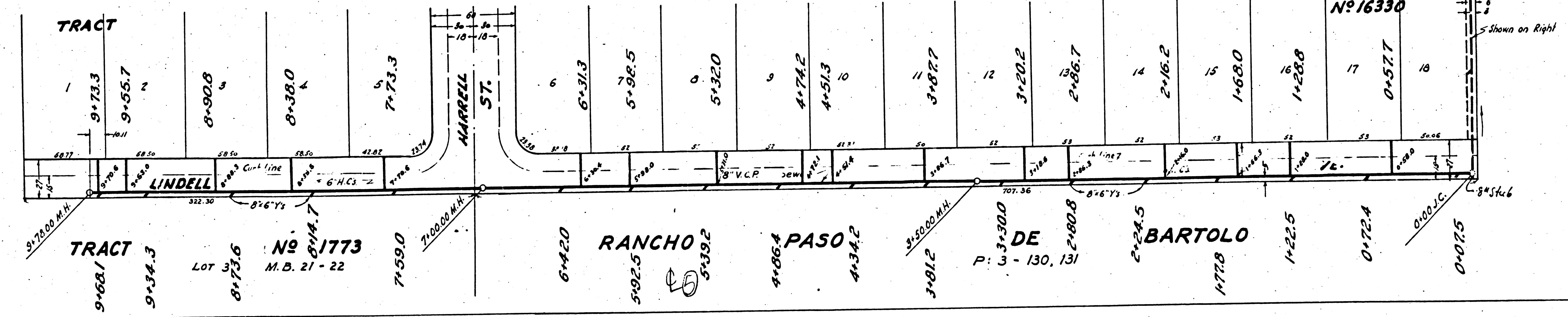
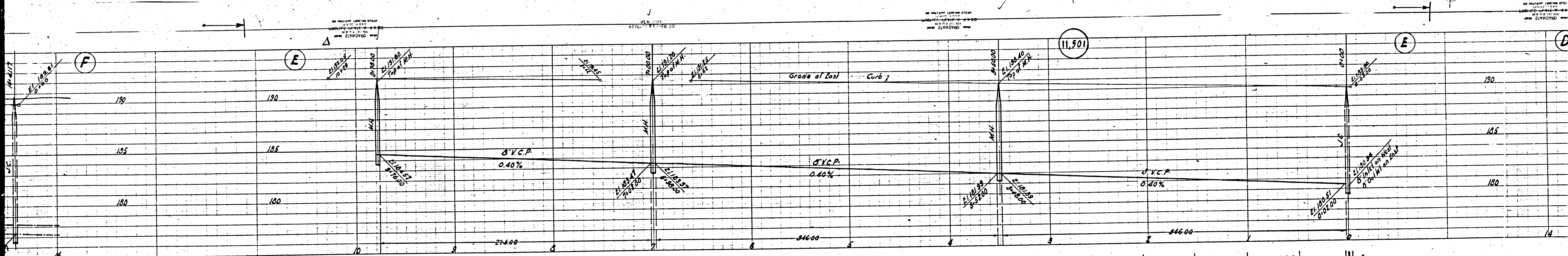
BY NEW YORK STATE
ENGINEERING BOARD
EXHIBIT NO. 12-1920
DATE 12-19-20

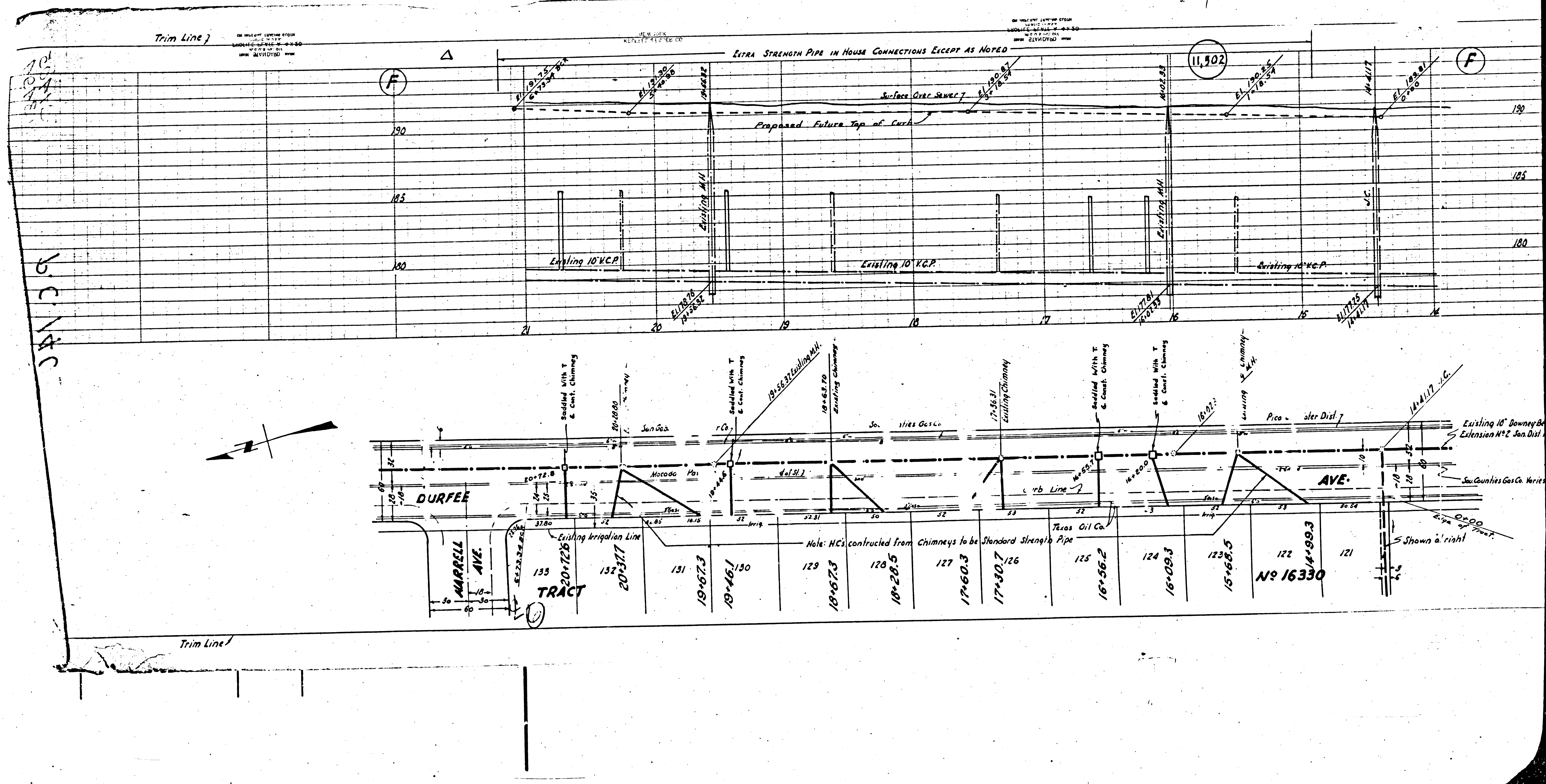
(149)

No 16330

No 16330

shown alright





10
 11
 12
 13
 14
 15
 16
 17
 18
 19
 20
 21

10
 11
 12
 13
 14
 15
 16
 17
 18
 19
 20
 21

Trim Line

ALL DIMENSIONS IN FEET AND INCHES
 UNLESS OTHERWISE SPECIFIED
 ALL ANGLES IN DEGREES
 ALL SURFACES TO BE FINISHED TO THE PROPOSED FINISH GRADE UNLESS OTHERWISE NOTED

NEW YORK

EXTRA STRENGTH PIPE IN HOUSE CONNECTIONS EXCEPT AS NOTED

11,502

F

F

190

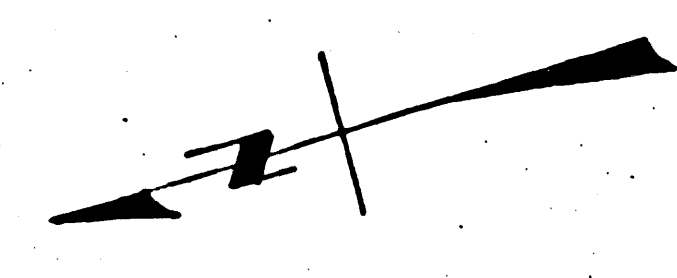
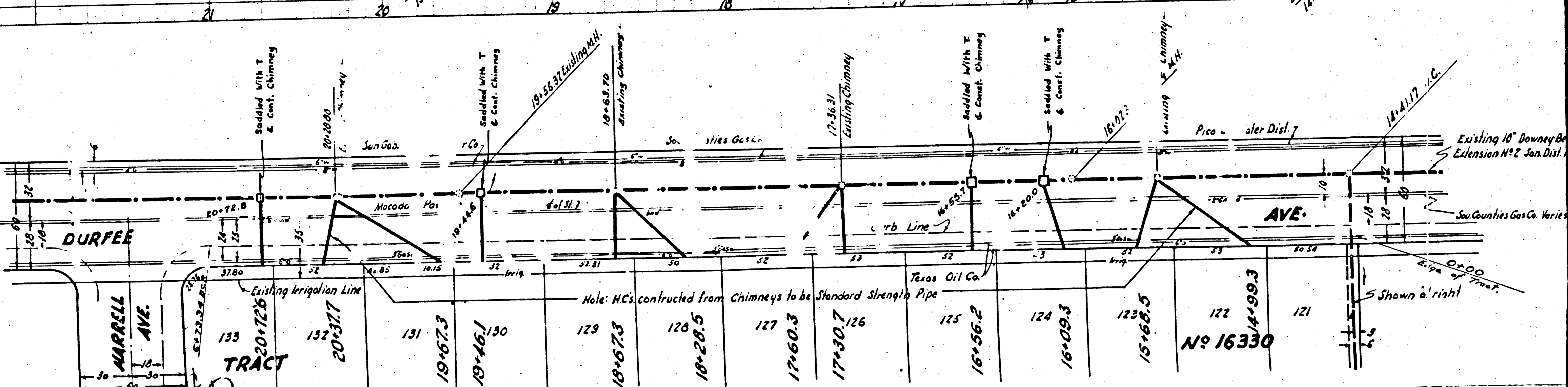
185

180

190

185

180



Trim Line

Note: HC's constructed from Chimneys to be Standard Strength Pipe

No 16330

Shown as right

133	132	131	130	129	128	127	126	125	124	123	122	121
20+126	20+317	19+673	19+451	18+673	18+285	17+603	17+307	16+562	16+093	15+685	14+993	