

**DOUBLE SCALE**  
 VERTICAL 1"=8'  
 HORIZONTAL 1"=140'

**BENCH MARK**  
 P.A. Elev. 259.00 - Sewer head in curb & 1/2 ft. from S.W. corner of ALBERA (old) E. SLAUSON. F.B. 164. Pg. 51  
 P.A. EL. 190.20 - Half length of curb of ACACIA ST 3' S of E. Prod. 6240 ST. F.B. 160. Pg. 5  
 All Field Book's Refer. to Los Angeles Investment Co.  
 OLD DATUM  
 Note: Add 3.775 ft. to all elevations shown hereon to agree with 5.616 station point adopted July 13 1925 by Ordinance No. 3222 (N.S.)

**PROFILE ALIGNMENT AND GRADE OF SANITARY SEWERS TO BE CONSTRUCTED IN**

**LA CIENEGA BLVD.**  
 58<sup>TH</sup> PL. TO 1304 FT. SLY. OF 58<sup>TH</sup> PL.  
**GROFT AVE.**  
 73 FT. SLY. OF 58<sup>TH</sup> PL. TO 1296 FT. SLY. OF 58<sup>TH</sup> PL.  
**KINGS ROAD**  
 58<sup>TH</sup> PL. TO 1383 FT. SLY. OF 58<sup>TH</sup> PL.  
**ORLANDO AVE.**  
 73 FT. SLY. OF 58<sup>TH</sup> PL. TO KINGS ROAD

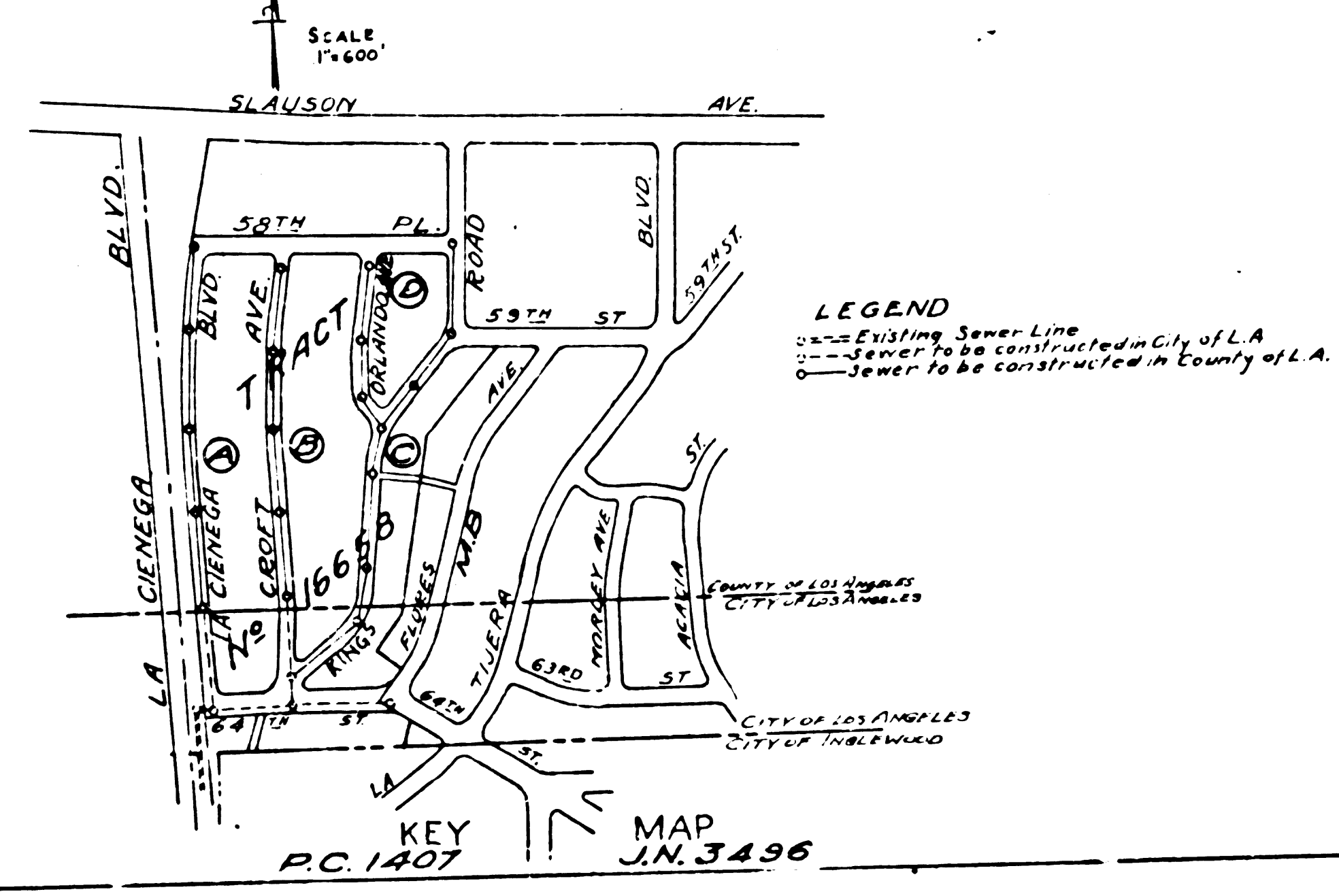
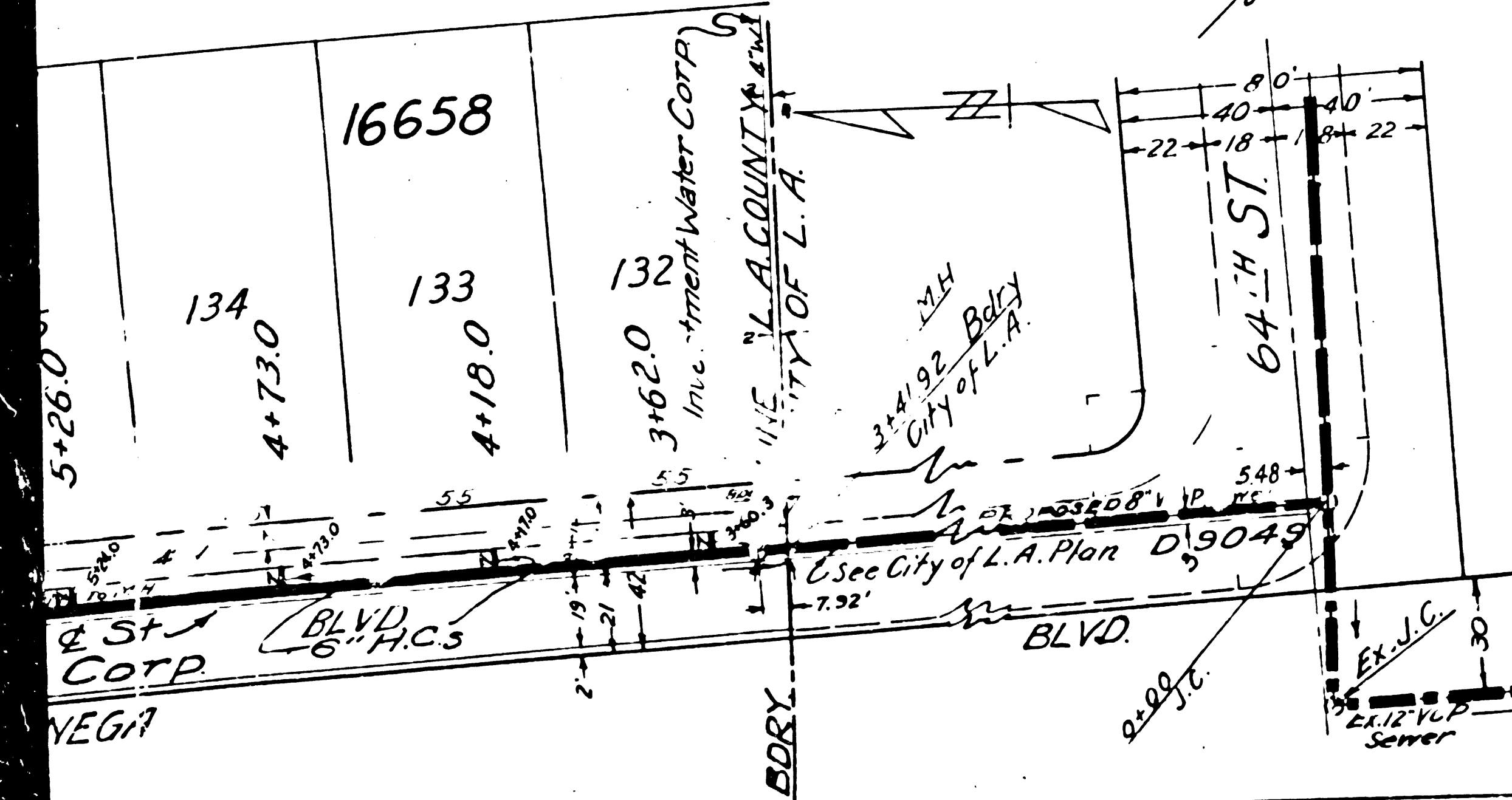
**PRIVATE CONTRACT NO. 1407**  
**W 3 24**  
**ONE SHEET**  
**PREPARED IN THE OFFICES OF LOS ANGELES INVESTMENT CO.**

BY: *Carroll R. Howard* 1950  
 FOR LEGEND REG. CE. No. 1629  
 (SEE PLAN No. S-a-64)



(1) CONSTRUCT HOUSE CONNECTIONS WITH INVERT AT CURB LINE 5" BELOW CURB GRADE, EXCEPT AS NOTED.  
 (2) USE 3" x 4" STANDARD MANHOLE FRAMES AND COVERS.  
 (3) USE STANDARD STRENGTH PIPE (EXCEPT AS NOTED).  
 (4) ALL STRUCTURES SHALL BE BRICK SEWER STRUCTURES 5" x 10" MENHOLE FOUR FEET IN DIAMETER WITH POLES AS PER S-a-119.  
 (5) USE CEMENT MORTAR FOR WIRE ROOF CLAY PIPE JOINTS.  
 (6) RE-SURFACE ALL TRENCH WITH IMPROVED ACRA TO MEET LOS ANGELES COUNTY ROAD DEPARTMENT REQUIREMENTS, IN ACCORDANCE WITH PERMIT.  
 NO REPRESENTATIVE OF THE COUNTY ENGINEER WILL SURVEY OR LAYOUT ANY PORTION OF THE WORK.  
 THE OWNER OR HIS AUTHORIZED REPRESENTATIVE SHALL FURNISH THE COUNTY ENGINEER WITH GRADE SHEETS AND STATIONS OF ALL HOUSE CONNECTIONS AND Y-BRANCHES AND SHALL PROVIDE STAKES FOR THEM AT THEIR PROPER LOCATIONS WITH STATIONING CLEARLY MARKED. ANY CHANGE OF LOCATION SHALL BE REQUESTED IN WRITING BY THE OWNER OR HIS REPRESENTATIVE.

**NOTE:**  
 No Revisions shall be made in these plans without approval of the County Engineer.



**NOTE:**  
 PROVIDE STAKES ON THE PROPERTY LINES OR PROPERTY LINES PRODUCED AT RIGHT ANGLES TO THE SEWER LINE AT THE CENTER LINE OF EACH MANHOLE.

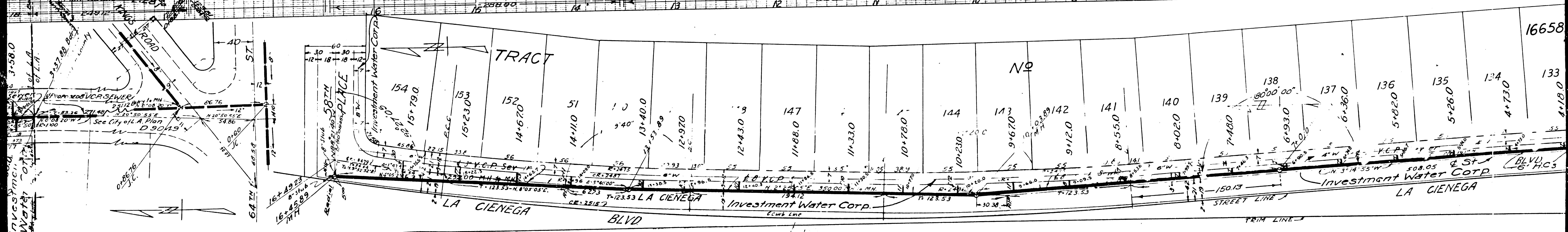
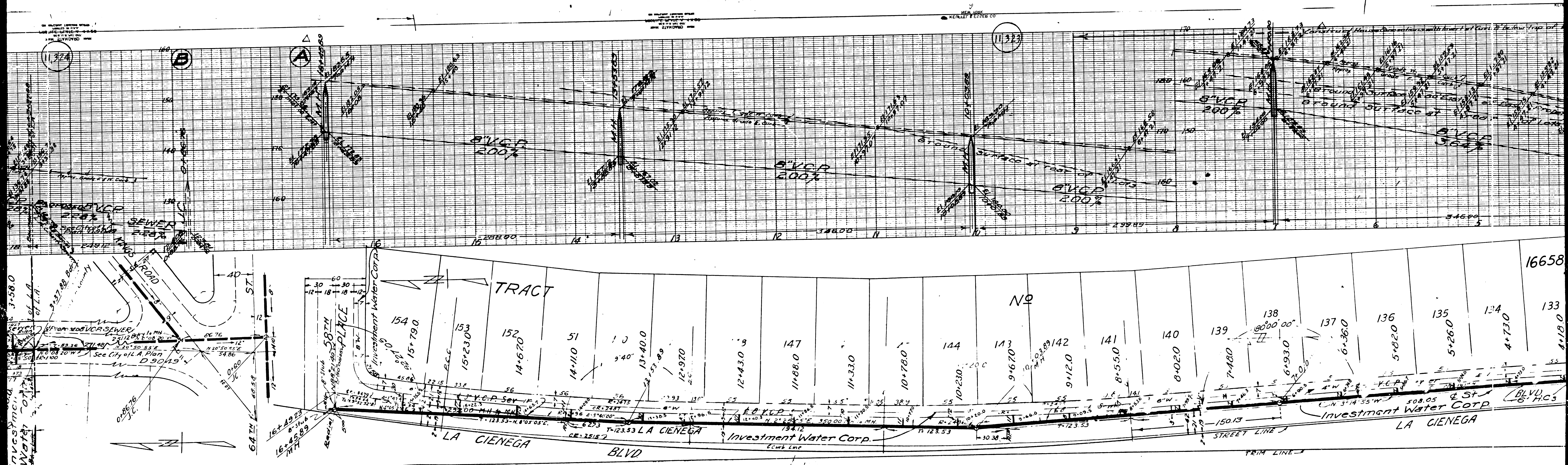
APPROVAL OF THIS PLAN BY THE COUNTY OF LOS ANGELES DOES NOT CONSTITUTE A REPRESENTATION OF THE ACCURACY OF THE LOCATION OF, OR THE DISTANCE OR NUMBER OF STRUCTURES UNDERGROUND UTILITIES, PIPE OR STRUCTURE WITHIN THE LIMITS OF THIS PROJECT.

**NOTE:**  
 GRADES TO WHICH THIS IMPROVEMENT IS TO BE CONSTRUCTED ARE SHOWN ON PLANS AND PROFILE. GRADE POINTS FOR TYPICAL CURB, CENTER LINE OF STREET OR CENTER LINE OF ALLEY ARE SHOWN BY CIRCLES ON PROFILES AT ALL POINTS BETWEEN DESIGNATED POINTS. THE GRADE SHALL BE ESTABLISHED SO AS TO CONFORM TO A STRAIGHT LINE DRAWN BETWEEN SAID DESIGNATED POINTS.  
 THIS DRAWING AND THE SPECIFICATIONS HEREBY MADE A PART OF THE SPECIFICATIONS. ELEVATIONS ARE 5.775' BELOW U.S.C. DATUM OR MEAN SEA LEVEL.  
 THE WORK SHALL BE CONSTRUCTED ACCORDING TO SPECIFICATIONS ON FILE IN THE OFFICE OF THE COUNTY ENGINEER AND SHALL BE PROSECUTED ONLY IN THE PRESENCE OF THE COUNTY ENGINEER. BEFORE WORK CAN BE STARTED THE CONTRACTOR MUST OBTAIN A PERMIT TO EXCAVATE IN COUNTY STREETS FROM THE L.A. COUNTY ROAD DEPT. 211 So. MAIN ST. AND MAKE A DEPOSIT WITH THE COUNTY ENGINEER, 808 L.A. CO. ENG. BLDG. SUFFICIENT TO COVER THE COST OF CONSTRUCTION INSPECTION AND RECORD PLANS.  
 IF WORK IS TO BE DONE ON A STATE HIGHWAY A PERMIT MUST BE OBTAINED FROM THE STATE OF CALIFORNIA DIVISION OF HIGHWAYS, 120 So. SPRING ST. AFTER MAKING THE DEPOSIT WITH THE COUNTY ENGINEER.  
 COUNTY OF LOS ANGELES, CALIFORNIA

APPROVED: *C. E. Howard*  
 COUNTY ENGINEER  
 APPROVED: *[Signature]*  
 OFFICE ENGINEER  
 FOR CHIEF ENGINEER OF COUNTY SANITATION DISTRICT NO. 3

CHECKED BY: *[Signature]* 6/26/1950  
 OFFICE OF COUNTY ENGINEER REG. CE. No. 1629

P.C. 1407



NO. 11324

11324

11324

11324

16658

Investment Water Corp.  
of L.A.  
See City of L.A. Plan  
D 90451

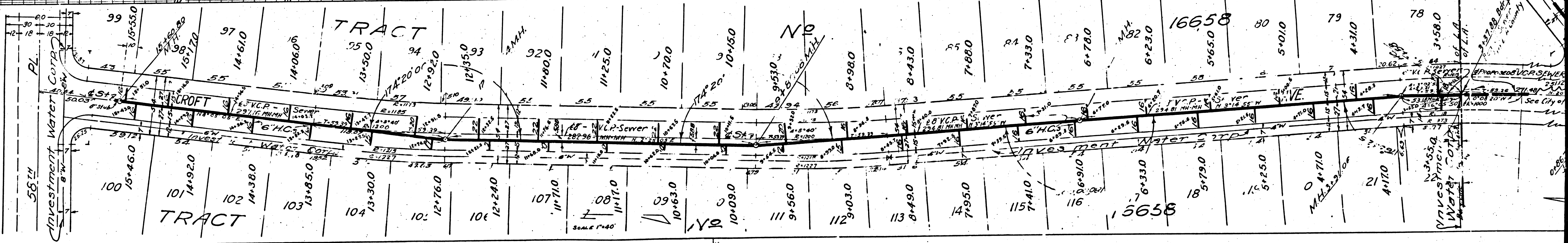
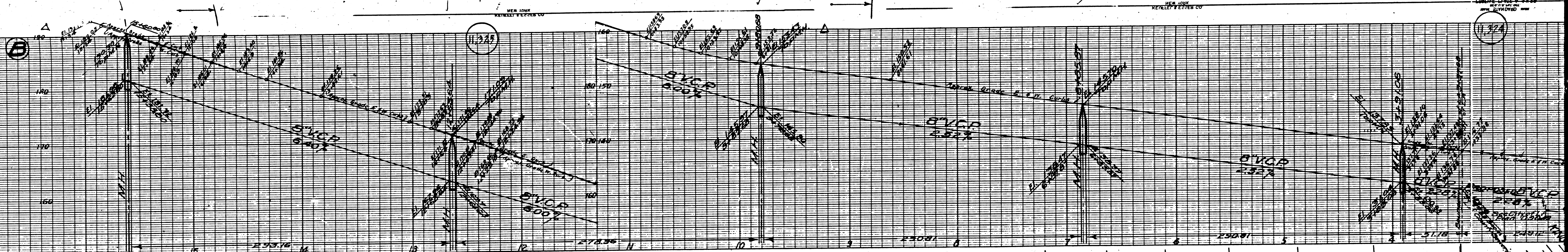
58TH  
PL

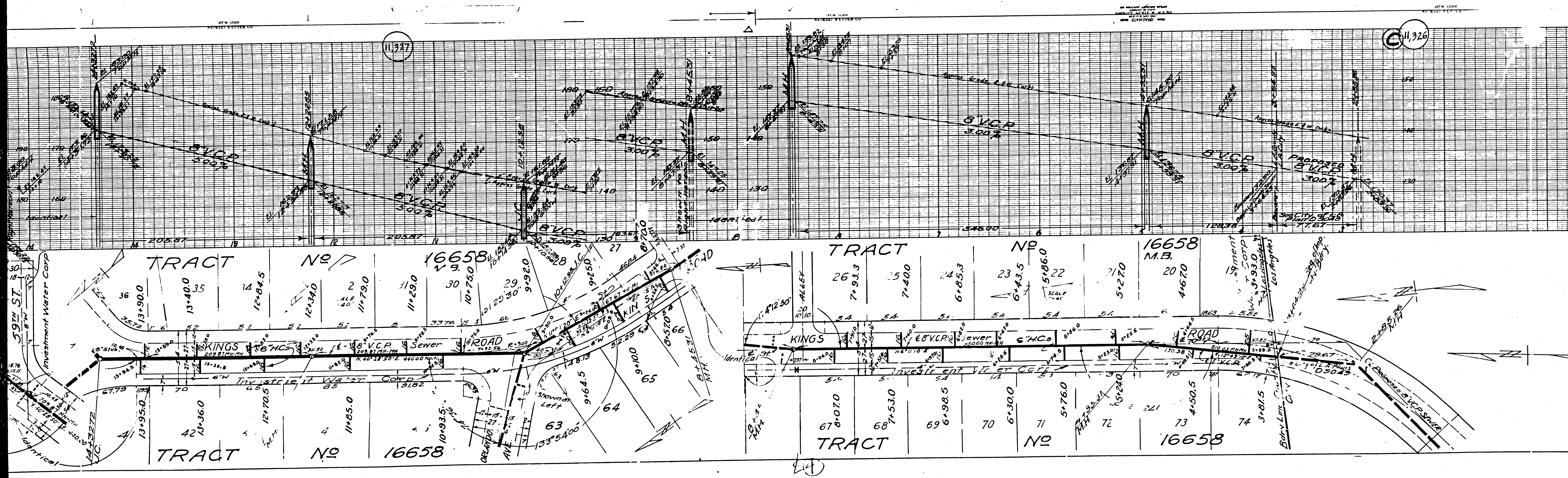
LA CIENEGA BLVD

Investment Water Corp.

LA CIENEGA

BLVD  
S.H.C.





11,327

11,326

11

NEW YORK  
ENGINEERS & ARCHITECTS

NEW YORK  
ENGINEERS & ARCHITECTS

NEW YORK  
ENGINEERS & ARCHITECTS

NEW YORK  
ENGINEERS & ARCHITECTS

