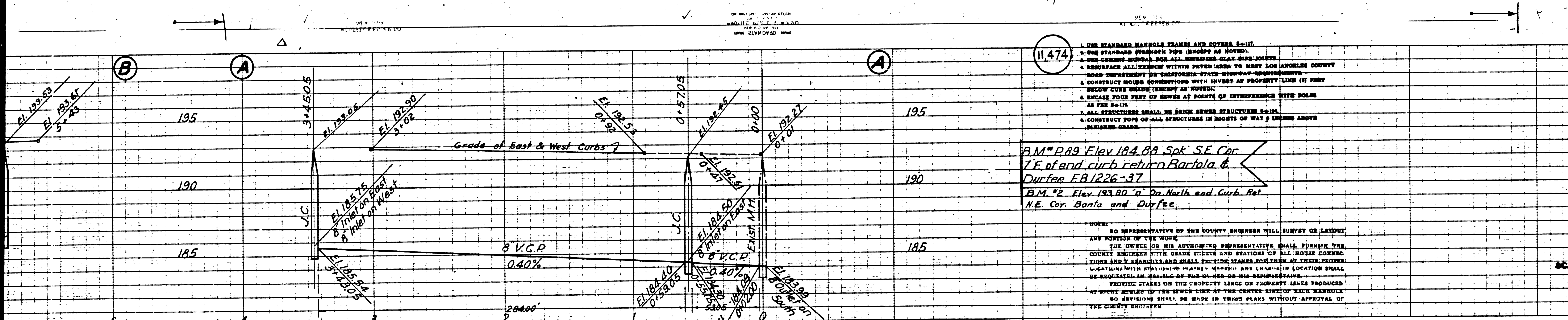


Trim Line



**PROFILE ALIGNMENT AND GRADE OF
SANITARY SEWERS
TO BE CONSTRUCTED IN
LINDSEY AVENUE
BANTA ROAD
LAYMAN AVENUE
ISORA STREET
TRACT NO. 16329
PRIVATE CONTRACT NO. 1409
W.S. 36
SHEET 1 OF 1 SHEETS
SCALE: VERT. 1"=4'
HORIZ. 1"=40'**

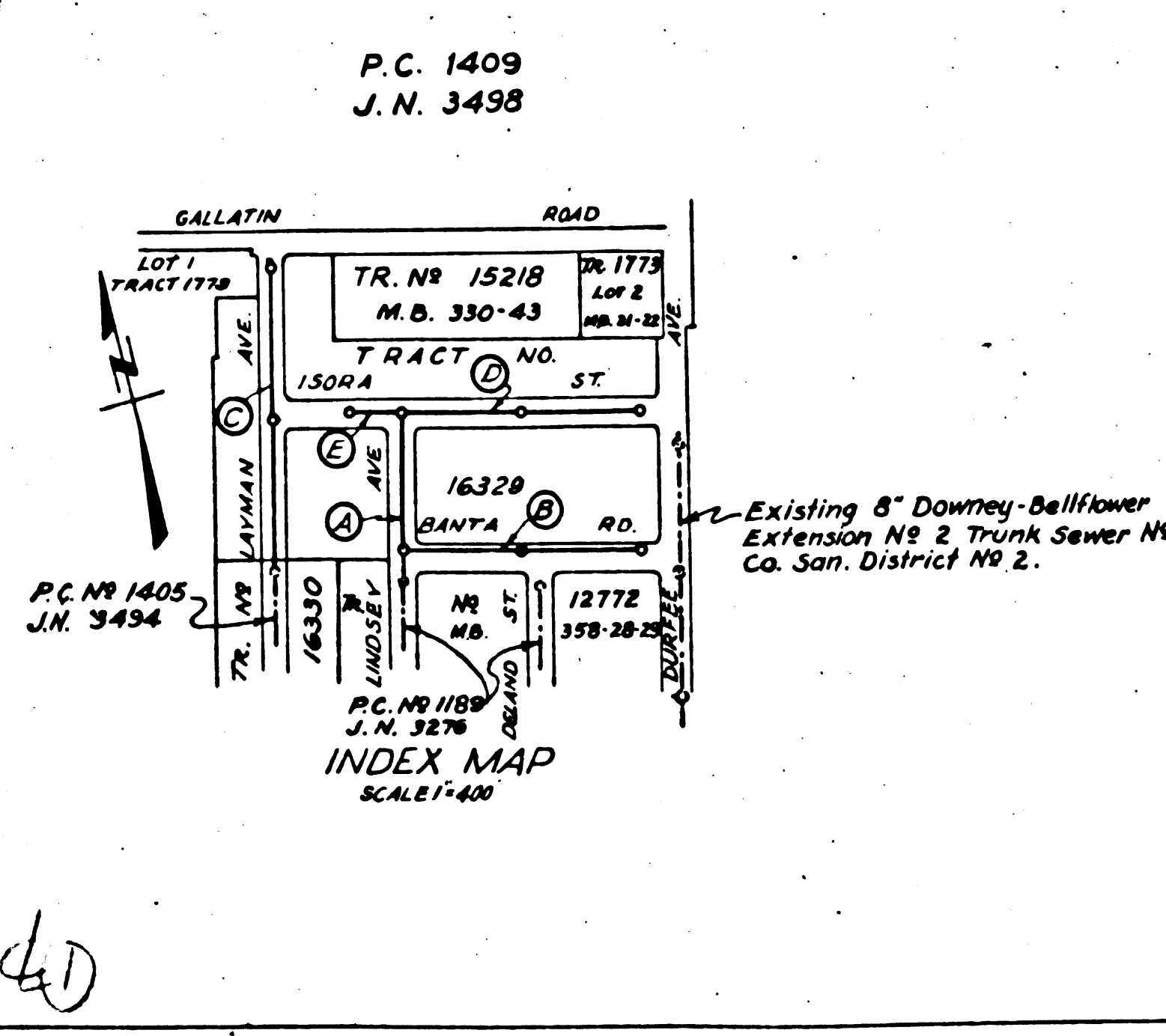
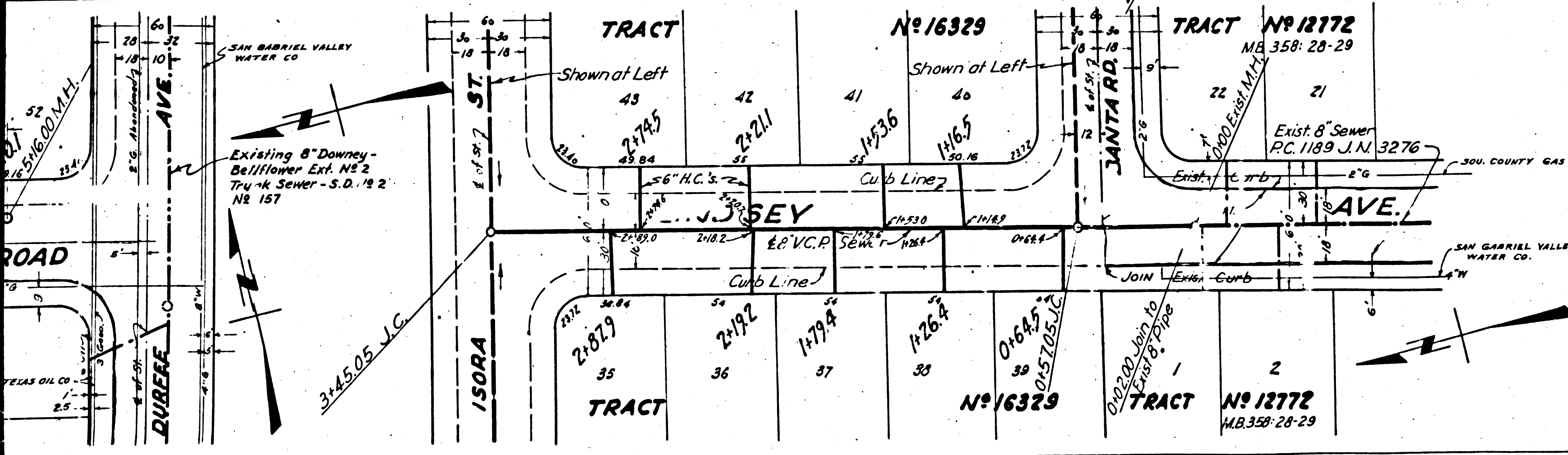
PREPARED IN THE OFFICES OF
SEABOARD ENGINEERING CO.
Mark A. Roblin
R.E. 2059

11474

1. USE STANDARD MANHOLE FRAMES AND COVERS EXHIBIT
2. USE STANDARD MANHOLE FRAMES AND COVERS EXHIBIT
3. USE STANDARD MANHOLE FRAMES AND COVERS EXHIBIT
4. REINFORCE ALL TRENCHES WITHIN PAVED AREAS TO MEET LOS ANGELES COUNTY REQUIREMENTS
5. CONSTRUCT ROUGH CONNECTIONS WITH INVERT AT PROPERTY LINE (IF FEET BELOW CURB GRADE) EXCEPT AS NOTED
6. EXPOSE FOUR FEET OF SEWER AT POINTS OF INTERFERENCE WITH SOLAR AS PER S-4-118
7. ALL STRUCTURES SHALL BE BUILT ABOVE FINISHED GRADE
8. CONSTRUCT POPE OF ALL STRUCTURES IN RIGHTS OF WAY 6 FEET ABOVE FINISHED GRADE

NOTES:
NO REPRESENTATIVE OF THE COUNTY ENGINEER WILL SURVEY OR LAYOUT ANY PORTION OF THE WORK.
THE OWNER OR HIS AUTHORIZED REPRESENTATIVE SHALL FURNISH THE COUNTY ENGINEER WITH GRADE ELEVATIONS AND STATIONS OF ALL HOUSE CONNECTIONS AND Y. MANHOLE AND SMALL STRUCTURE LOCATIONS AT THEIR PROPER LOCATIONS WITH STRIKING PLAINLY MARKED. ANY CHANGE IN LOCATION SHALL BE RECORDED IN WRITING BY THE OWNER OR HIS REPRESENTATIVE.
PROVIDE STAKES ON THE PROPERTY LINES OR PROPERTY LINES PRODUCED BY SURVEYORS TO THE SEWER LINES AT THE CURBS AT EVERY "KICK" OR CHANGE. NO REVISIONS SHALL BE MADE IN THESE PLANS WITHOUT APPROVAL OF THE COUNTY ENGINEER.

B.M. #1474 Elev. 184.88 Spk. S.E. Cor. T.E. of end curb return Banta & Durfee FB 1226-37
B.M. #2 Elev. 193.80 "a" On North end Curb Ret. N.E. Cor. Banta and Durfee



FOR LEGEND

NOTE: GRADES TO WHICH THIS IMPROVEMENT IS TO BE CONSTRUCTED ARE SHOWN ON PLANS AND PROFILES.
GRADE POINTS FOR TOP OF CURB, CENTER LINE OF STREET OR CENTER LINE OF ALLEY ARE SHOWN BY DOTTED LINES. AT ALL POINTS WHERE THE GRADE POINTS ARE SHOWN, GRADES SHALL BE ESTABLISHED TO A STRAIGHT LINE DRAWN BETWEEN THEM.
ELEVATIONS ARE IN FEET ABOVE U.S. DATUM OF MEAN SEA LEVEL. THIS DRAWING AND THE DATA HEREON ARE HEREBY MADE A PART OF THE SPECIFICATIONS.
WORK SHALL BE CONSTRUCTED ACCORDING TO SPECIFICATIONS ON FILE IN THE OFFICE OF THE COUNTY ENGINEER AND SHALL BE PROTECTED ONLY IN THE PRESENCE OF THE COUNTY ENGINEER.
BEFORE WORK CAN BE PROTECTED, THE CONTRACTOR MUST OBTAIN A PERMIT TO EXCAVATE FROM THE COUNTY ENGINEER. THE COUNTY ENGINEER'S OFFICE IS LOCATED AT 125 WEST 1ST STREET, LOS ANGELES, CALIFORNIA.
IF WORK IS TO BE DONE IN A STATE HIGHWAY, A PERMIT MUST BE OBTAINED FROM THE STATE HIGHWAY DEPARTMENT, 1200 NORTH BRUNNEN STREET, LOS ANGELES, CALIFORNIA.
APPROVAL OF THIS PLAN BY THE COUNTY OF LOS ANGELES DOES NOT CONSTITUTE AN ENDORSEMENT OF ANY UNDERGROUND UTILITY, PIPE OR STRUCTURE WITHIN THE LIMITS OF THIS PROJECT.

COUNTY OF LOS ANGELES, CALIFORNIA

APPROVED: *[Signature]*
COUNTY ENGINEER

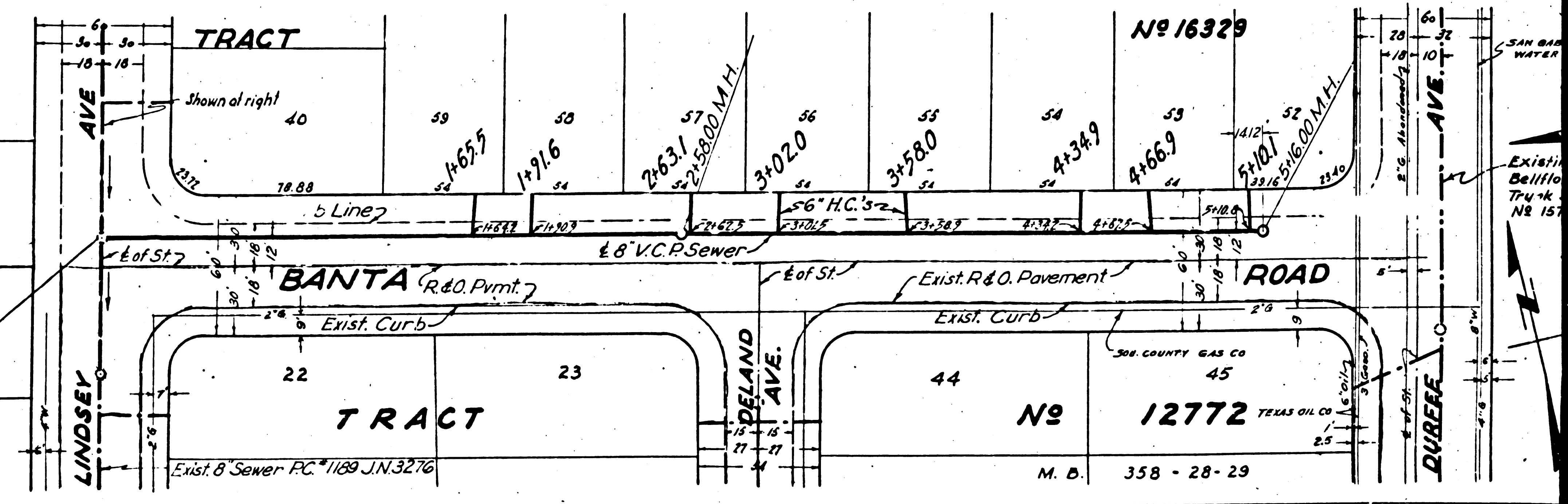
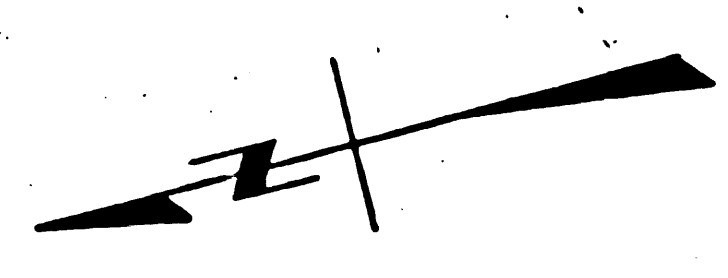
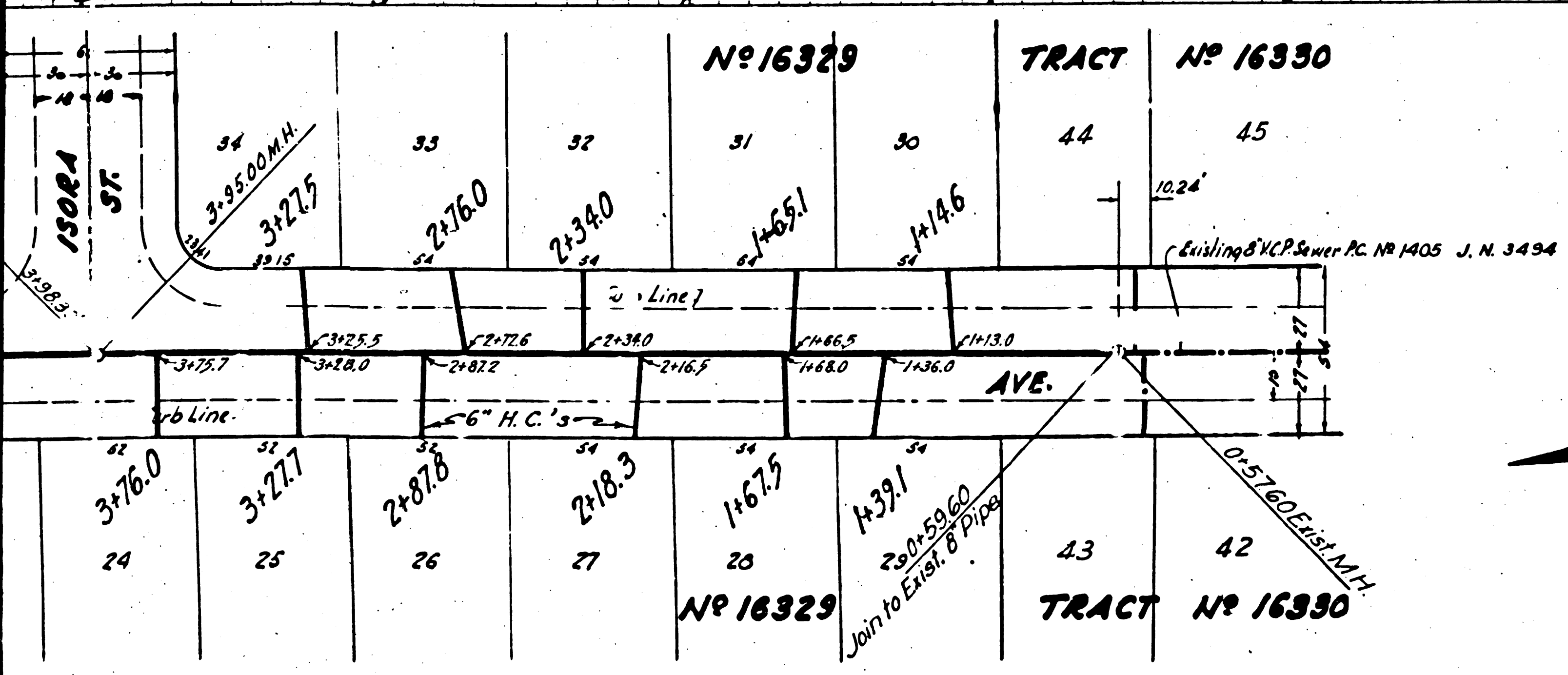
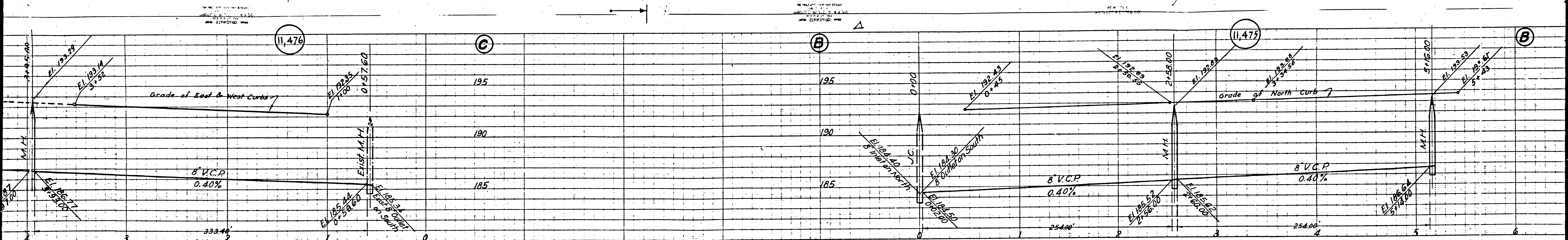
APPROVED: *[Signature]*
CHIEF ENGINEER OF COUNTY ENGINEER DISTRICT NO. 2

CHECKED: *[Signature]* 8:10 AM
OFFICE OF COUNTY ENGINEER DISTRICT NO. 2 7476

AUG 21 1950
CALIFORNIA DIVISION

Trim Line

604



M. D. 358 - 28 - 29

