

PROFILE ALIGNMENT AND GRADE OF
SANITARY SEWERS
 TO BE CONSTRUCTED IN
SANITARY SEWER RIGHTS OF WAY
 IN TRACT NO. 16536

PRIVATE CONTRACT NO. 1412
 W.S. 28
 ONE SHEET

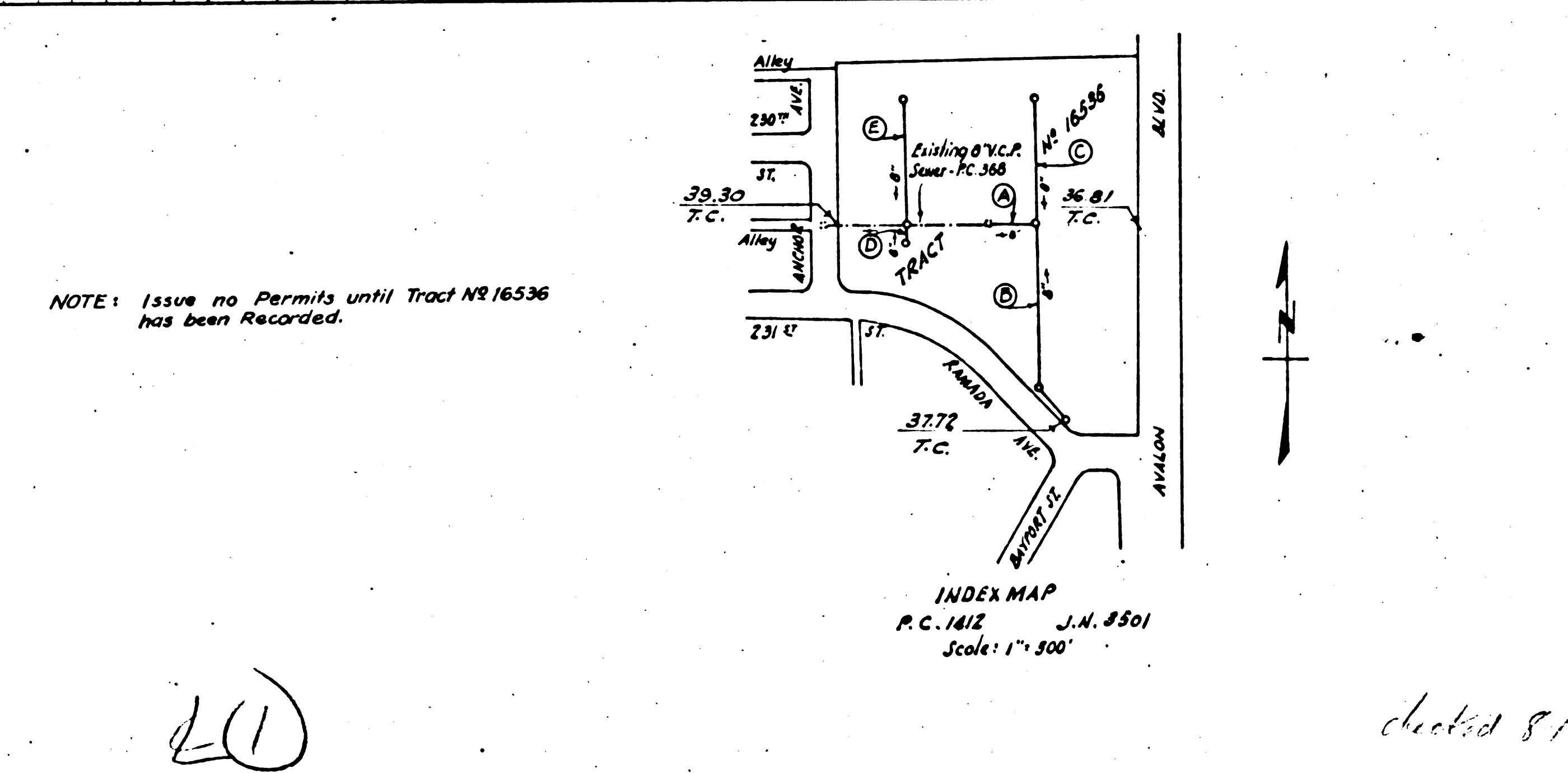
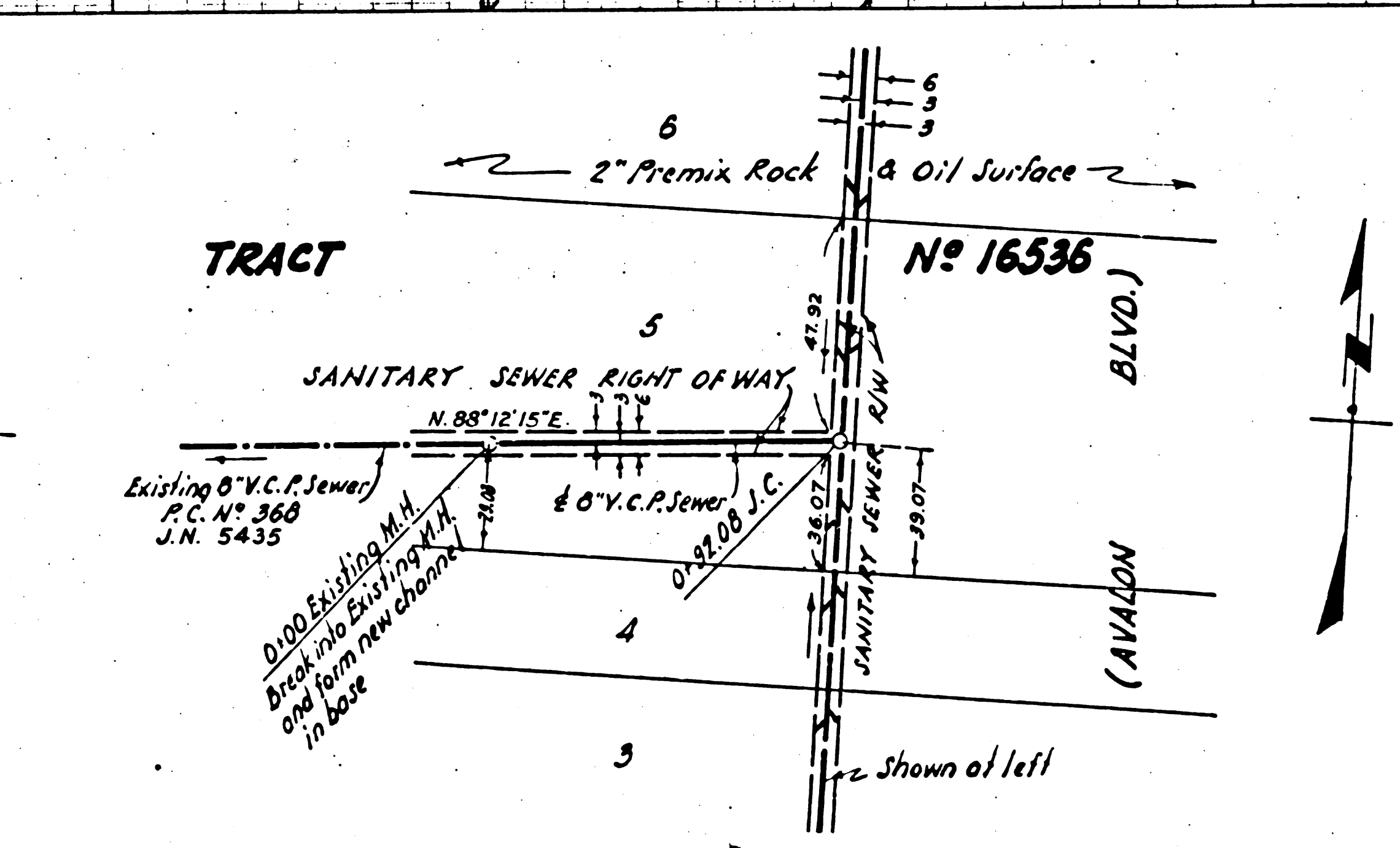
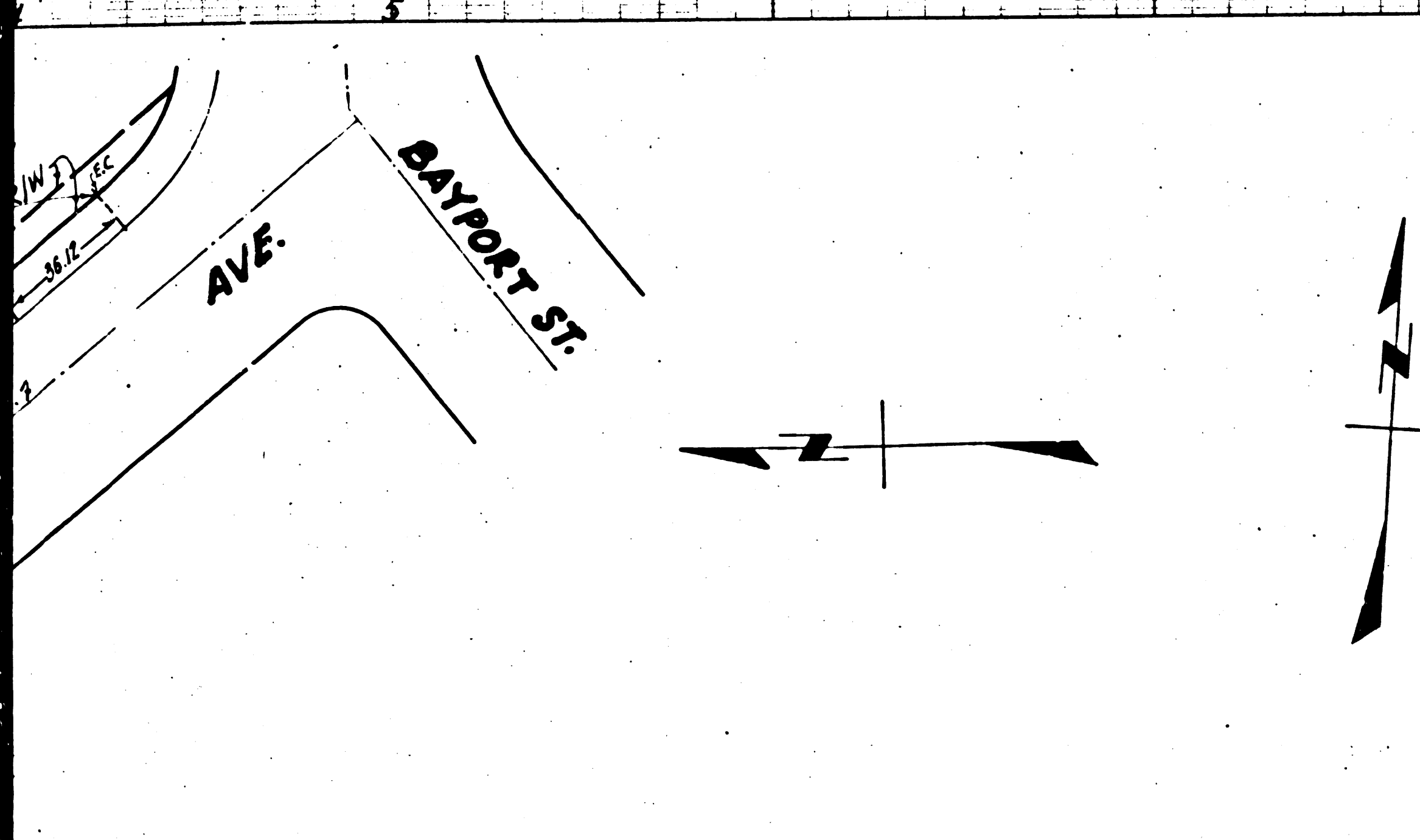
SCALE: HORIZ. 1" = 40'
 VERT. 1" = 4'

JUNE 1950

PREPARED IN THE OFFICE OF LEONARD H. GOWDY
 BY *Leonard H. Gowdy* E.S. C.E. NO. 4678

FOR LEGEND
 SEE PLAN NO. S-2-64

NOTE:
 ELEVATIONS ARE IN FEET ABOVE U.S.G.S. DATUM OR MEAN SEA LEVEL.
 THIS DRAWING AND THE DATA HEREON ARE HEREBY MADE A PART OF THE SPECIFICATIONS.
 WORK SHALL BE CONSTRUCTED ACCORDING TO SPECIFICATIONS ON FILE IN THE OFFICE OF THE COUNTY ENGINEER
 AND SHALL BE PROSECUTED ONLY IN THE PRESENCE OF THE COUNTY ENGINEER.
 BEFORE WORK CAN BE STARTED THE CONTRACTOR MUST MAKE A DEPOSIT WITH THE COUNTY ENGINEER,
 828 COUNTY ENGINEERING BLDG., SUFFICIENT TO COVER THE COST OF CONSTRUCTION INSPECTION AND
 RECORD PLANS.



NOTE: Issue no Permits until Tract No 16536 has been Recorded.

INDEX MAP
 P.C. 1412 J.N. 8501
 Scale: 1" = 300'

COUNTY OF LOS ANGELES, CALIFORNIA

APPROVED *Edmund* COUNTY ENGINEER
 APPROVED *Allen* CHIEF ENGINEER OF COUNTY SANITATION DISTRICT NO. 8
 CHECKED BY *James T. Reston* S.E.E.S. OFFICE OF COUNTY ENGINEER
 REG. C.E. NO. 7103

RECEIVED JUN 30 1950

dated 8/17/50 *Allen*

