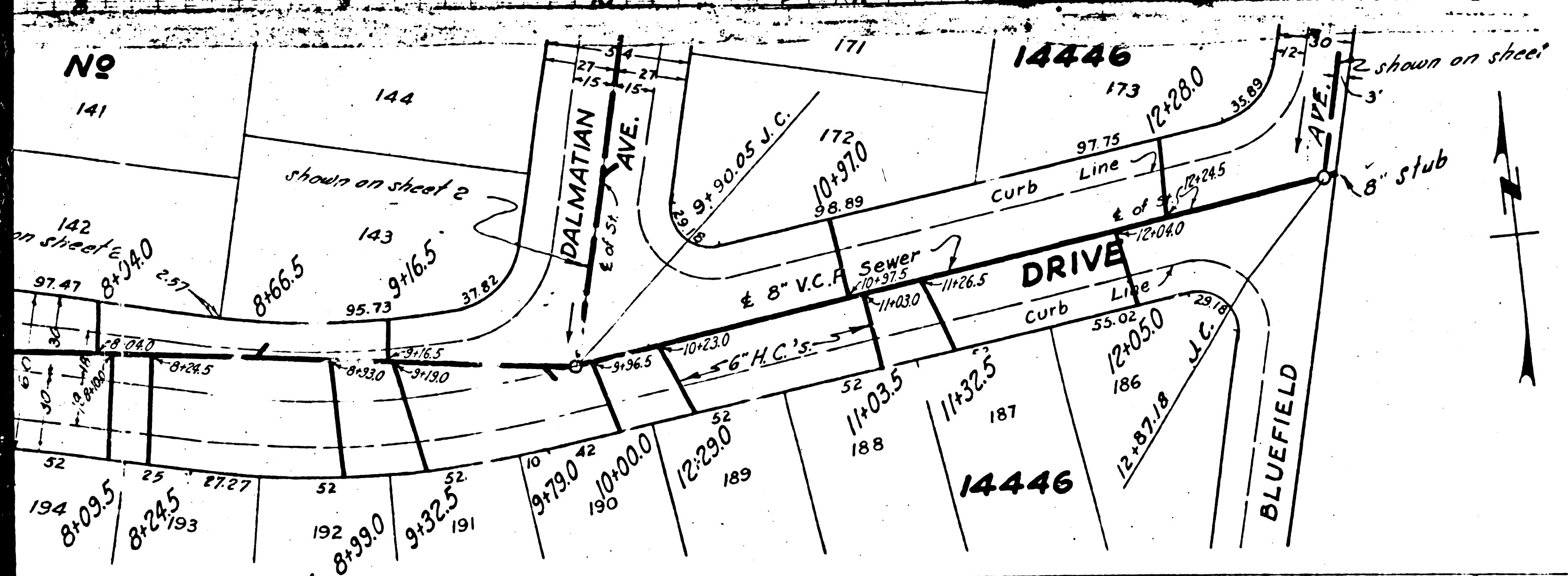


**DOUBLE SCALE**

Elev. 180.61  
 B.M. Z-135, Pg. 137 - U.S. 243 - Whittier 3.4  
 miles S.E. of - At SW corner of Colima  
 Rd & Mulberry St.  
 In Cone Base of Electric Warning Signal  
 Chisled & marked U.S.B.M. 180.4

NOTE: Elevation shown refers to a datum plane  
 0.96 feet lower than the County Sanitation  
 District datum plane as indicated by C.S.D.  
 B.M. 14-38 Elev. 178.723  
 Rail road spike east side of power pole  
 No 308815 - south side of Colima Rd at  
 Hawes St.



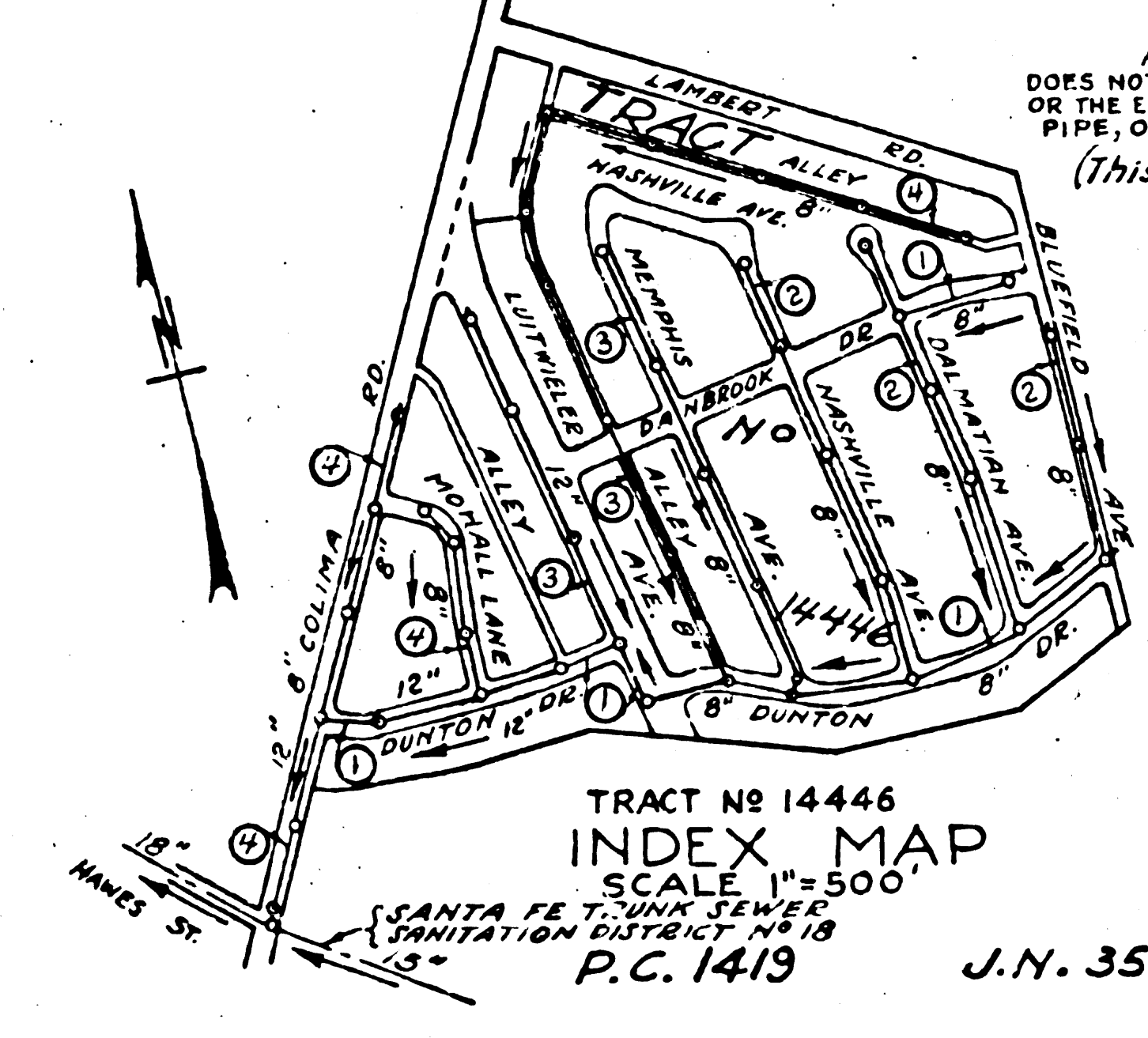
11,792	USE STANDARD STRENGTH PIPE EXCEPT AS NOTED
	USE CEMENT MORTAR FOR ALL VITRIFIED CLAY PIPE JOINTS
	ENCASE FOUR FEET OF SEWER AT POINTS OF INTERFERENCE WITH POLES AS PER S-115
	CONSTRUCT HOUSE CONNECTIONS WITH INVERT AT CURB LINE - 5 FEET BELOW CURB GRADE EXCEPT AS NOTED
	ALL STRUCTURES SHALL BE BRICK SEWER STRUCTURES AS PER PLAN NO. S-104
	USE STANDARD MANHOLE FRAMES AND COVERS AS PER PLAN NO. S-117
	RESURFACE ALL TRENCHES WITHIN PAVED AREA TO MEET LOS ANGELES COUNTY ROAD DEPT. REQUIREMENTS IN ACCORDANCE WITH PERMIT
	PROVIDE STAKES ON THE PROPERTY LINES OR PROPERTY LINES PRODUCED AT RIGHT ANGLES TO THE SEWER LINE AT THE CENTER LINE OF EACH MANHOLE
	NO REVISIONS SHALL BE MADE IN THESE PLANS WITHOUT APPROVAL OF THE COUNTY ENGINEER
	NO REPRESENTATIVE OF THE COUNTY ENGINEER WILL SURVEY OR LAY OUT ANY PORTION OF THE WORK
	THE OWNER OR HIS AUTHORIZED REPRESENTATIVE SHALL FURNISH THE COUNTY ENGINEER WITH GRADE SHEETS AND STATIONS OF ALL HOUSE CONNECTIONS AND Y BRANCHES, AND SHALL PROVIDE STAKES FOR THEM AT THEIR PROPER LOCATIONS WITH STATIONING PLAINLY MARKED
	ANY CHANGE OF LOCATION SHALL BE REQUESTED IN WRITING BY THE OWNER OR HIS REPRESENTATIVE

PROFILE ALIGNMENT AND GRADE OF  
**SANITARY SEWERS**  
 TO BE CONSTRUCTED IN  
**TRACT NO 14446**  
**DUNTON DRIVE**  
 BETWEEN COLIMA ROAD AND BLUEFIELD AVENUE  
**LUITWIELER AVENUE**  
 BETWEEN DUNTON DR SOUTH AND DUNTON DR NORTH  
**DANBROOK DRIVE**  
 BETWEEN DALMATIAN AVE. AND BLUEFIELD AVE.

PRIVATE CONTRACT NO. 1419  
 W. S. 34  
 SHEET 1 OF 4 SHEETS

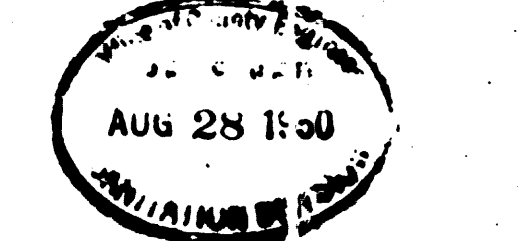
SCALE: VERT. 1"=4' HORIZ. 1"=40'  
 JUNE 1950.

PREPARED IN THE OFFICES OF  
**KEMMERER ENG. CO.**



APPROVAL OF THIS PLAN BY THE COUNTY OF LOS ANGELES DOES NOT CONSTITUTE A REPRESENTATION AS TO THE ACCURACY OF OR THE EXISTENCE OR NON-EXISTENCE OF ANY UNDERGROUND UTILITY, PIPE, OR STRUCTURE WITHIN THE LIMITS OF THIS PROJECT.  
 (This note applies to all sheets)

BY: *John H. Kemmerer*  
 REG. C. E. NO. 172



FOR LEGEND  
 SEE PLAN NO. S-2-24

NOTE:  
 GRADES TO WHICH THIS IMPROVEMENT IS TO BE CONSTRUCTED ARE SHOWN ON PLANS AND PROFILED GRADE POINTS FOR TOP OF CURB, CENTER LINE OF STREET OR CENTER LINE OF ALLEY ARE SHOWN BY CIRCLES ON PROFILES. AT ALL POINTS BETWEEN DESIGNATED POINTS THE GRADE SHALL BE ESTABLISHED SO AS TO CONFORM TO A STRAIGHT LINE DRAWN BETWEEN SAID DESIGNATED POINTS.  
 ELEVATIONS ARE IN FEET ABOVE U. S. S. DATUM OR MEAN SEA LEVEL.  
 THIS DRAWING AND THE DATA HEREON ARE HEREBY MADE A PART OF THE SPECIFICATIONS.  
 THE COUNTY ENGINEER AND SHALL BE PROSECUTED ONLY IN THE PRESENCE OF THE COUNTY ENGINEER BEFORE WORK CAN BE STARTED. THE CONTRACTOR MUST OBTAIN A PERMIT TO EXCAVATE IN COUNTY STREETS FROM THE L. A. COUNTY ROAD DEPT. IN LOS ANGELES AND MAKE A DEPOSIT WITH THE COUNTY ENGINEER, ROOM 330 AT 104 W. 4TH STREET, SUFFICIENT TO COVER THE COST OF CONSTRUCTION INSPECTION AND RECORD PLANS.  
 IF WORK IS TO BE DONE IN A STATE HIGHWAY, A PERMIT MUST BE OBTAINED FROM THE STATE OF CALIFORNIA, DIVISION OF HIGHWAYS, 808 STATE BUILDING, AFTER MAKING THE DEPOSIT WITH THE COUNTY ENGINEER.

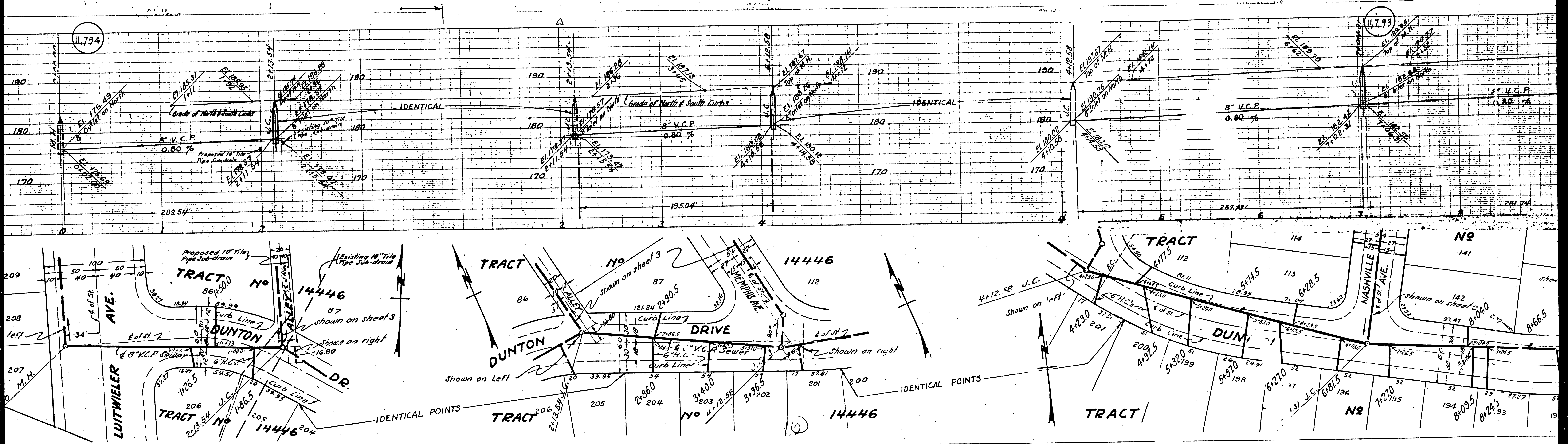
COUNTY OF LOS ANGELES, CALIFORNIA

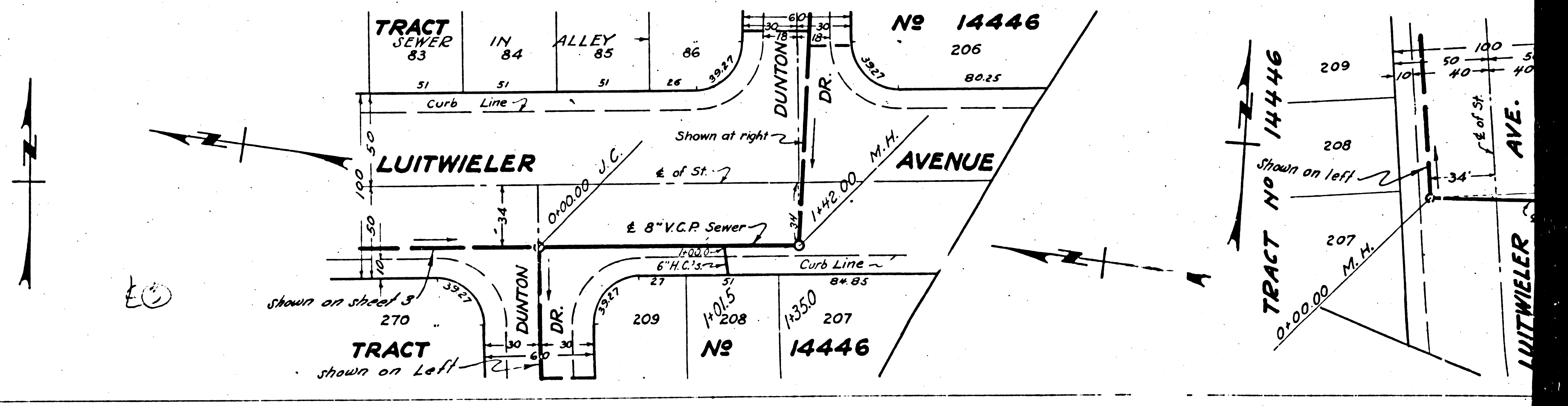
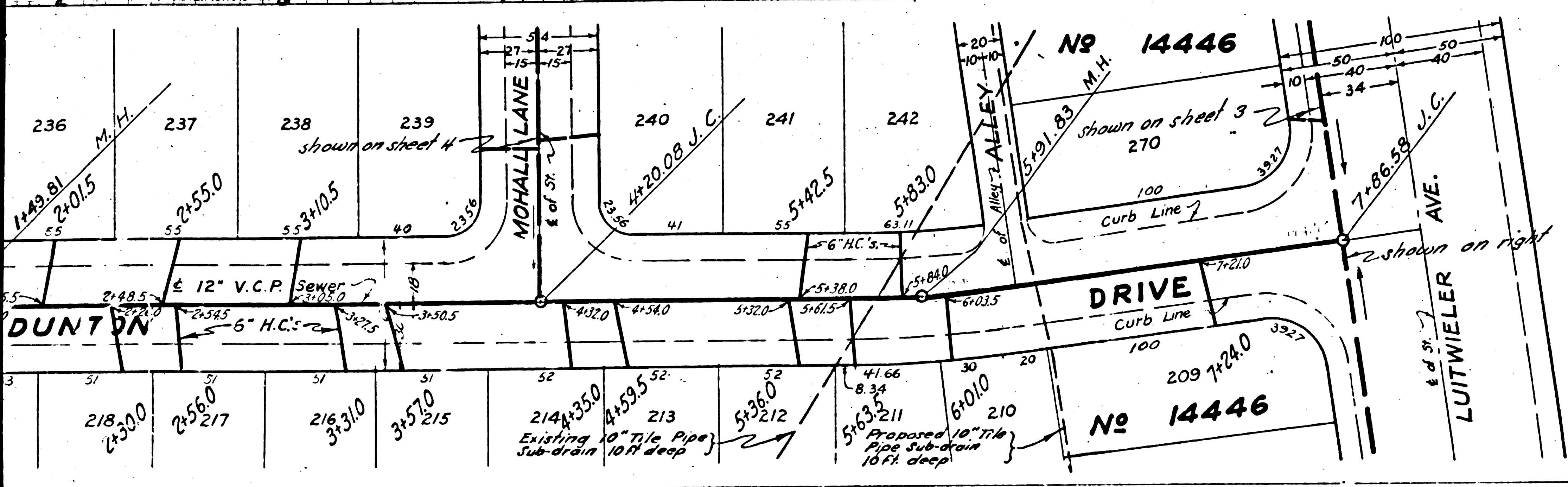
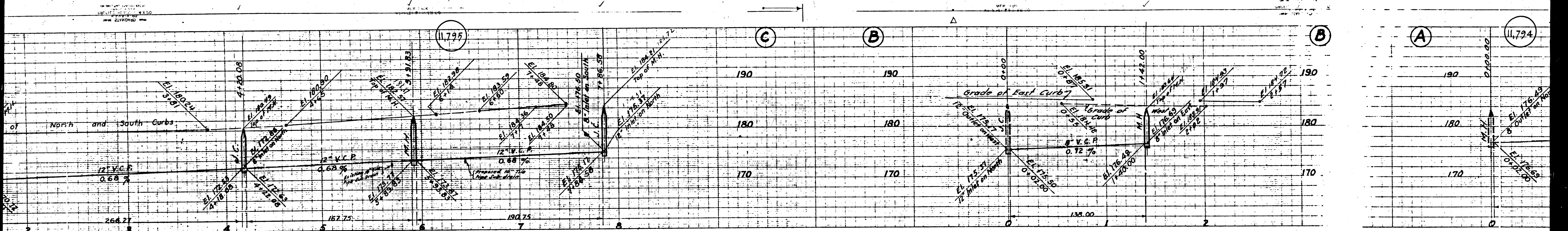
APPROVED: *John H. Kemmerer*  
 COUNTY ENGINEER

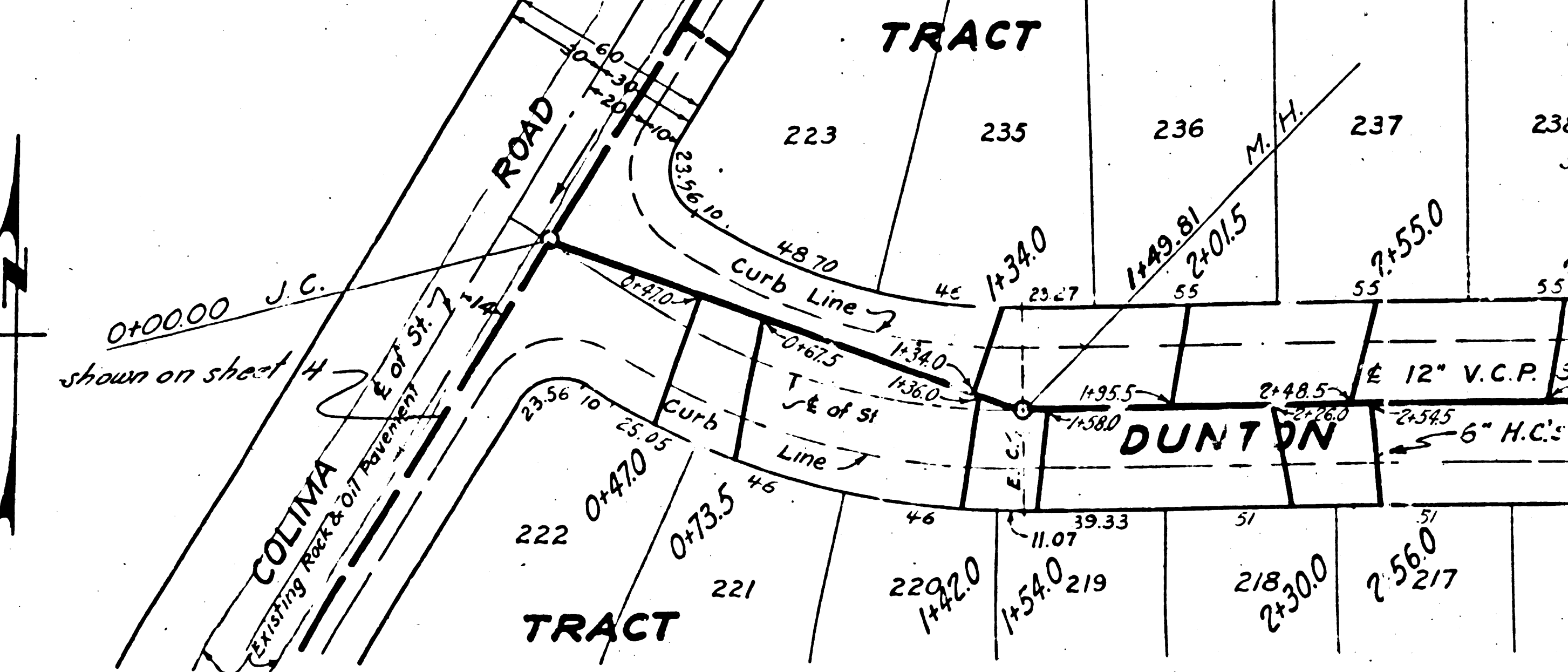
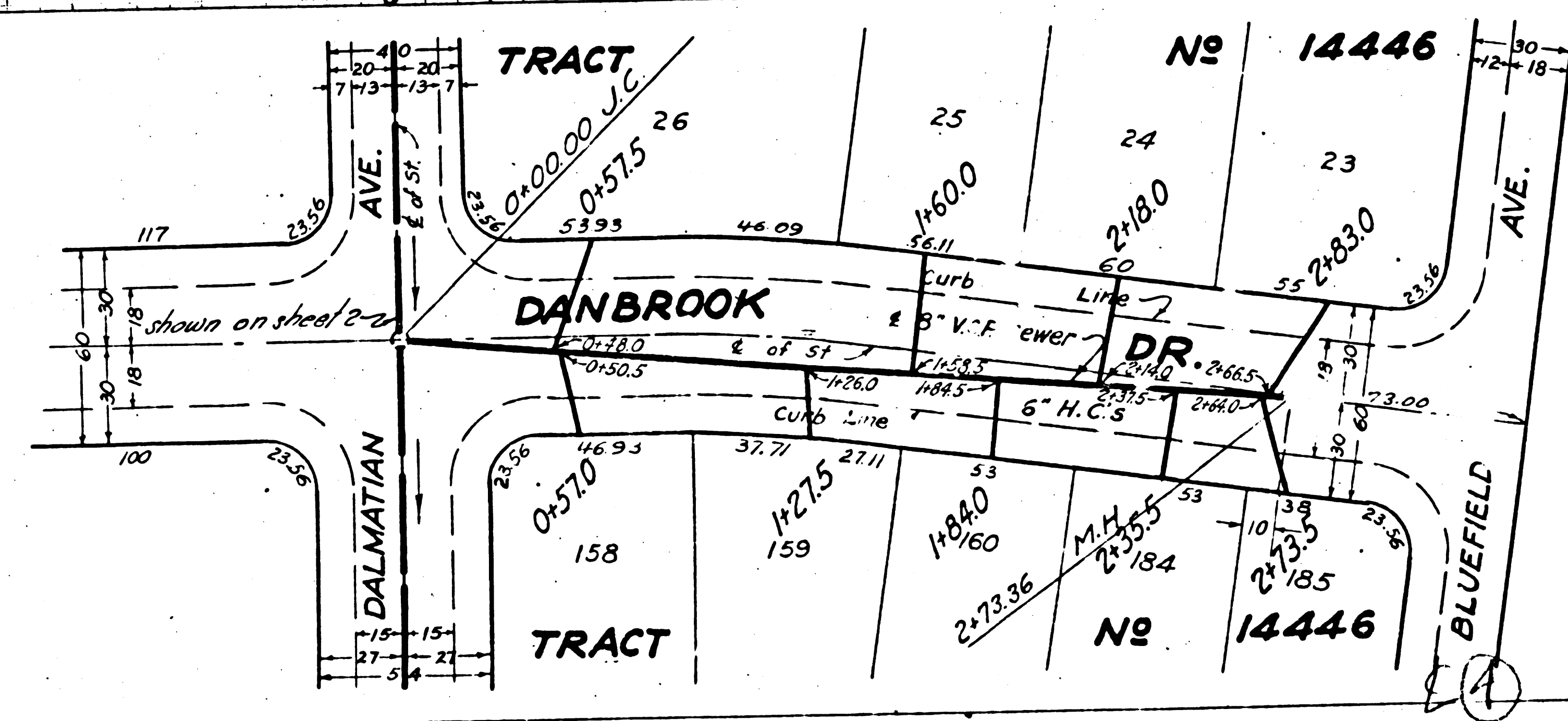
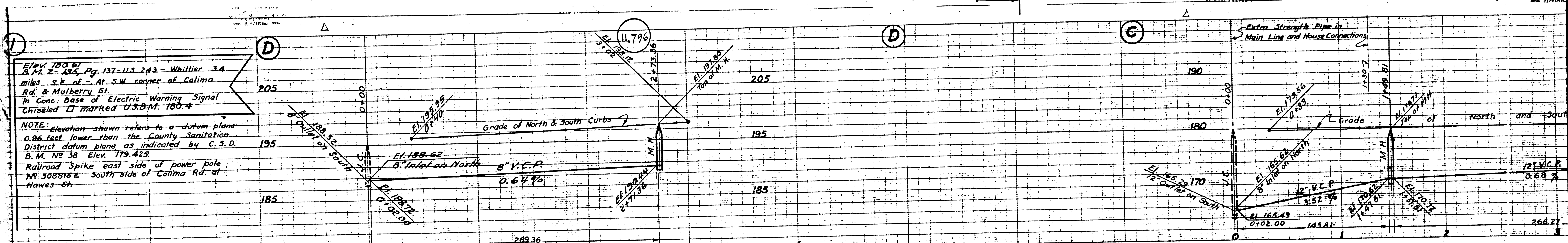
APPROVED: *C.R. Conner*  
 DISTRICT ENGINEER OF COUNTY SANITATION DISTRICT NO. 18

CHECKED BY: *Robert E. Keller*  
 No. 3 1950  
 DISTRICT ENGINEER OF COUNTY SANITATION DISTRICT NO. 18

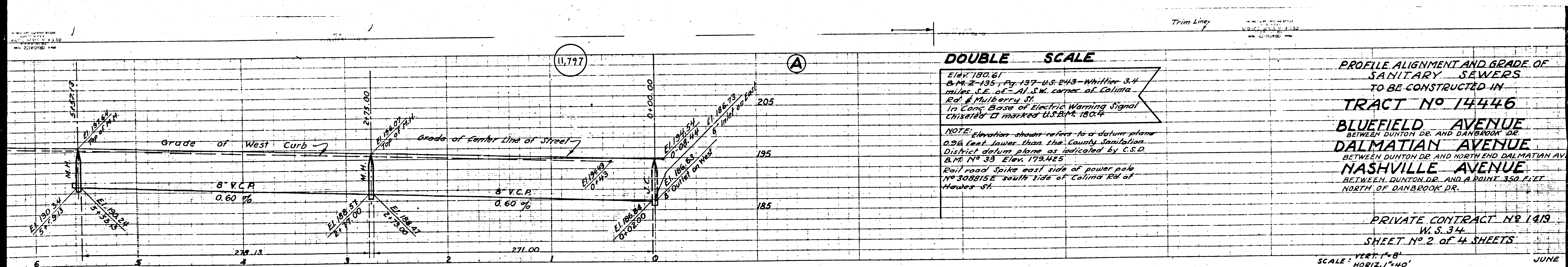
TRACT NO 14446  
 INDEX MAP  
 SCALE 1"=500'  
 P.C. 1419 J.N. 3508







1  
 2  
 3  
 4  
 5  
 6



**DOUBLE SCALE**  
 Elev. 180.61  
 B.M. 2-135, Pg. 137 U.S. 243 - Whittier 3.4  
 miles S.E. of - At S.W. corner of Colima  
 Rd. & Mulberry St.  
 In Cont. Base of Electric Warning Signal  
 Chisard - I marked U.S.B.M. 180.4  
 NOTE: Elevation shown refers to a datum plane  
 0.96 feet lower than the County Sanitation  
 District datum plane as indicated by C.S.D.  
 B.M. No. 33 Elev. 179.425  
 Rail road Spike east side of power pole  
 17° 30' 15" E south side of Colima Rd. at  
 Hayes St.

**PROFILE ALIGNMENT AND GRADE OF  
 SANITARY SEWERS  
 TO BE CONSTRUCTED IN  
 TRACT NO 14446  
 BLUEFIELD AVENUE  
 BETWEEN DUNTON DR. AND DANBROOK DR.  
 DALMATIAN AVENUE  
 BETWEEN DUNTON DR. AND NORTH END DALMATIAN AV.  
 NASHVILLE AVENUE  
 BETWEEN DUNTON DR. AND A POINT 350 FEET  
 NORTH OF DANBROOK DR.**

PRIVATE CONTRACT NO 1413  
 W.S. 34  
 SHEET NO 2 OF 4 SHEETS  
 SCALE: VERT. 1"=8'  
 HORIZ. 1"=40'  
 JUNE

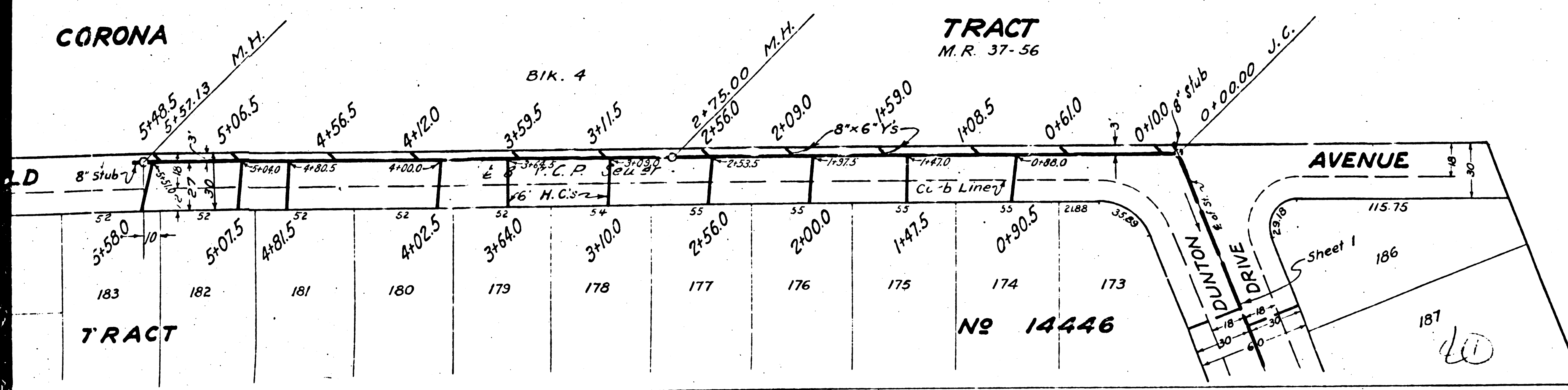
PREPARED IN THE OFFICES OF  
**KEMMERER ENGR. CO.**  
 BY *[Signature]*  
 Reg. C.E. No. 272

FOR LEGEND  
 SEE PLAN S-a-64  
 See sheet 1 for Construction Notes

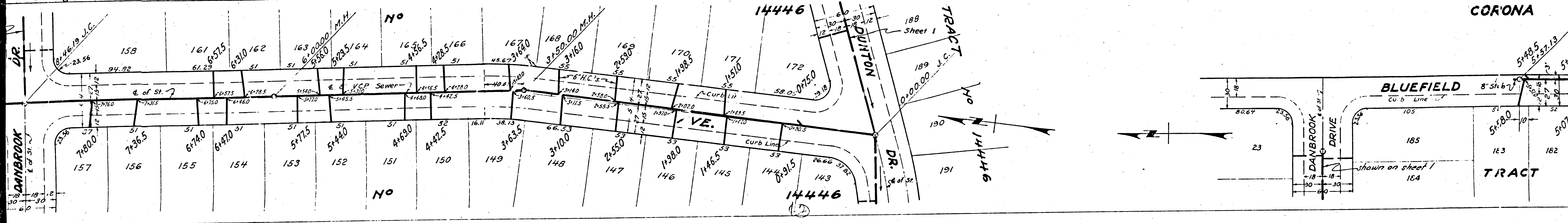
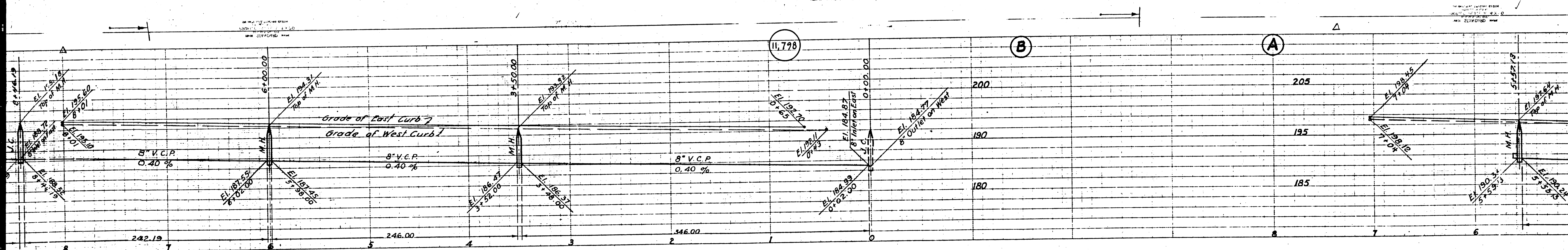
APPROVED *[Signature]*  
 COUNTY ENGINEER

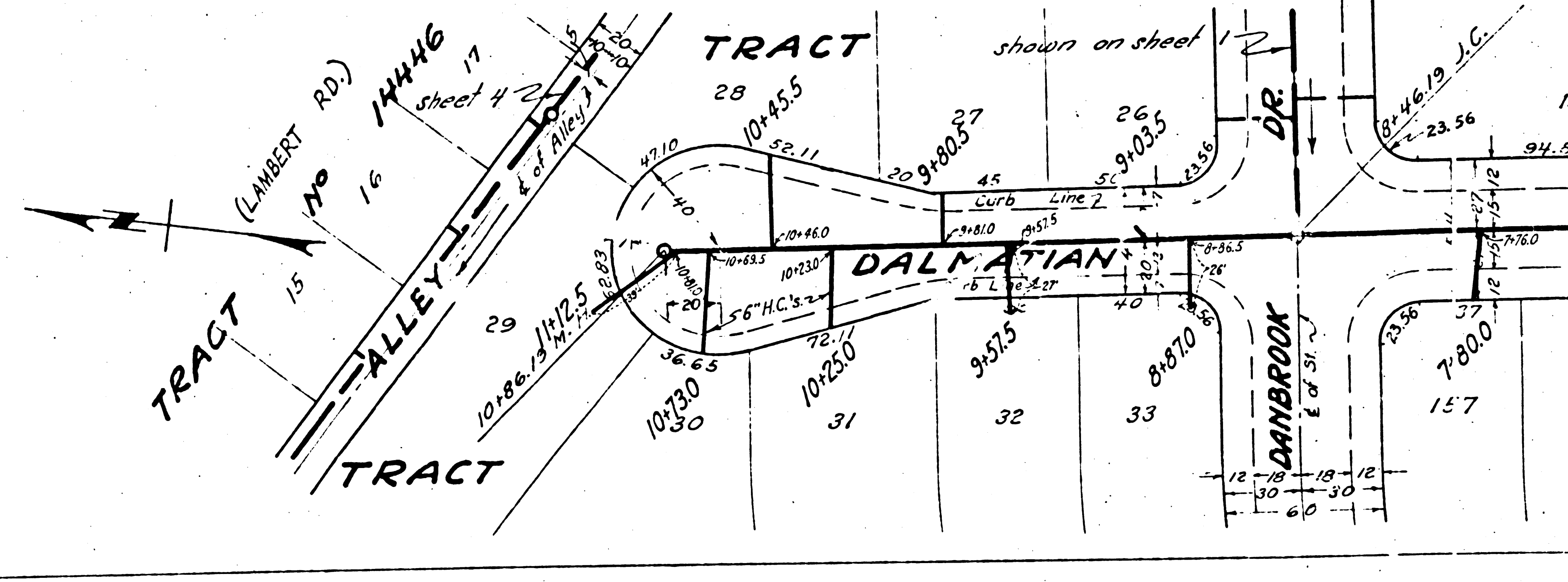
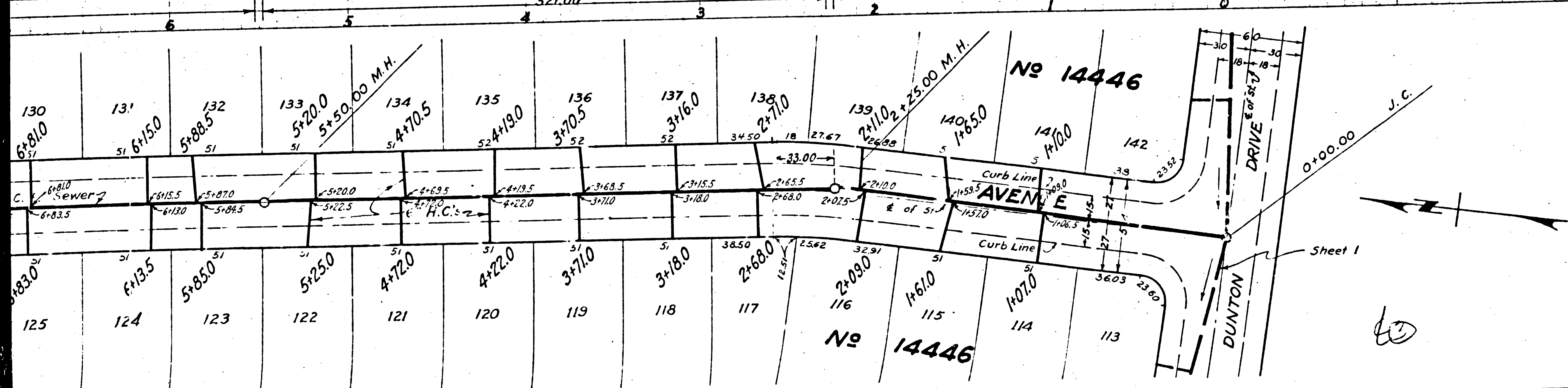
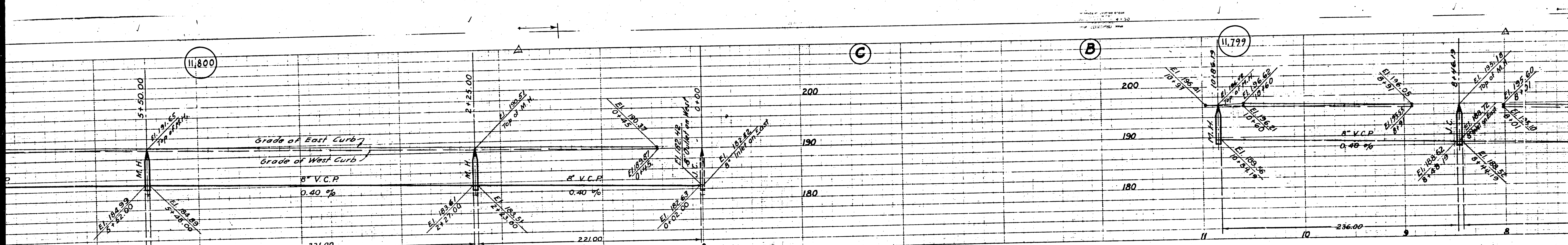
APPROVED *[Signature]*  
 ACT. FOR CHIEF ENGINEER COUNTY  
 SANITATION DISTRICT NO 18

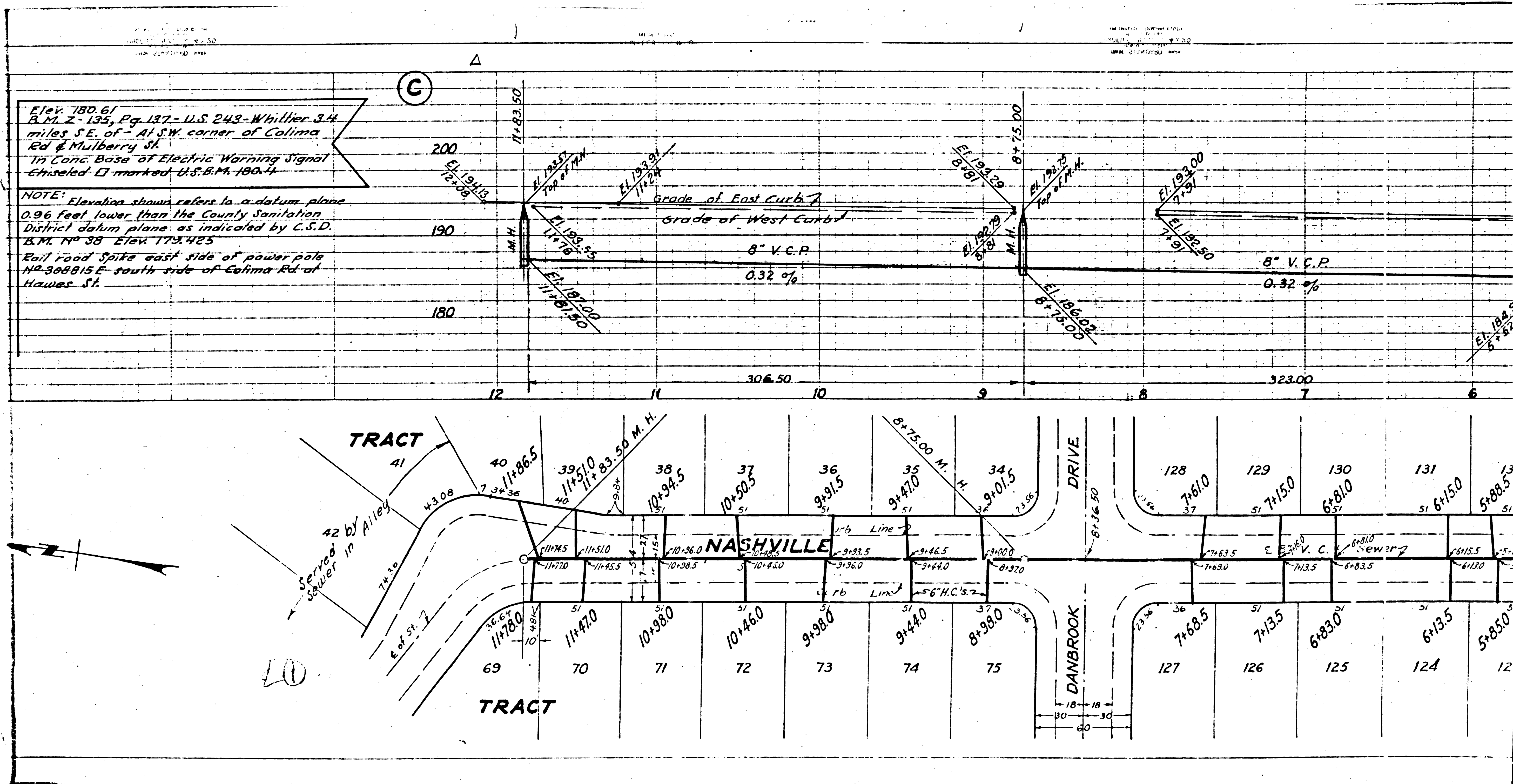
CHECKED BY *[Signature]*  
 OFFICE OF COUNTY ENGINEER ELEC.



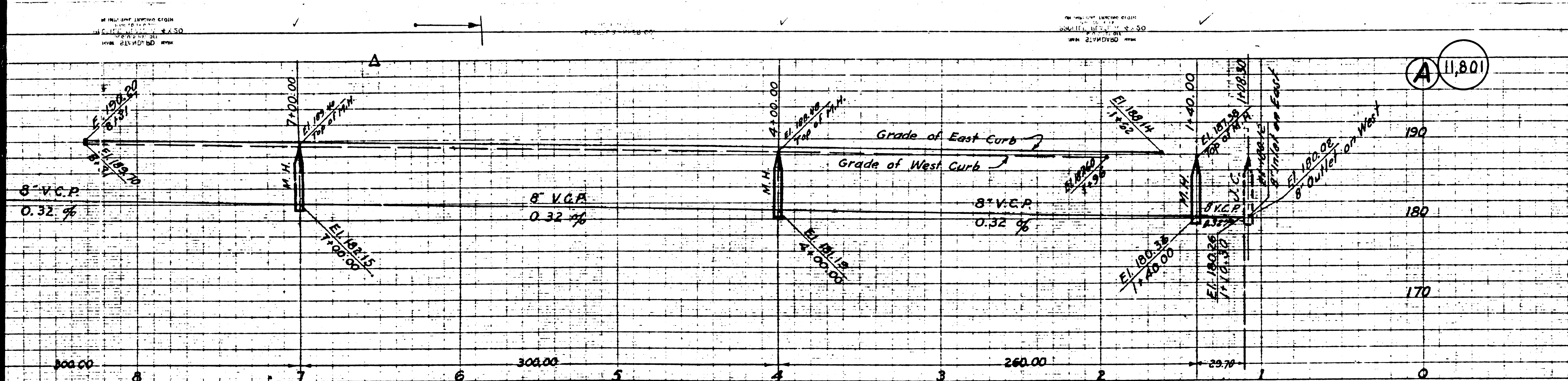
Trim Line











**DOUBLE SCALE**

Elev. 180.61  
 B.M. Z-135, Pg. 137 - U.S. 243-Whittier S.W.  
 miles S.E. of - N.W. corner of Colima  
 Rd. & Mulberry St.  
 1/4 Conc. Base of Electric Warning Signal  
 Showed "B" marked 4.5.2.M. 188-1

NOTE: Elevation chosen refers to a datum plane  
 0.96 feet lower than the County Sanitation  
 District datum plane as indicated by C.S.D.  
 B.M. No. 38 Elev. 179.425  
 Rail road gate east side of power pole  
 No. 308815-E south side of Colima Rd. at  
 Hanner St.

PROFILE ALIGNMENT AND GRADE OF  
**SANITARY SEWERS**  
 TO BE CONSTRUCTED IN  
**TRACT NO 14446**  
**MEMPHIS AVENUE**  
 BETWEEN DUNTON DR. AND NASHVILLE AVE.  
**ALLEY EAST OF LUITWIELER AVE.**  
 BETWEEN DUNTON DR. AND LAMBERT RD.  
**LUITWIELER AVENUE**  
 BETWEEN DUNTON DR. AND COLIMA RD.

PRIVATE CONTRACT NO 1419  
 W.S. 34  
 SHEET NO 3 OF 4 SHEETS

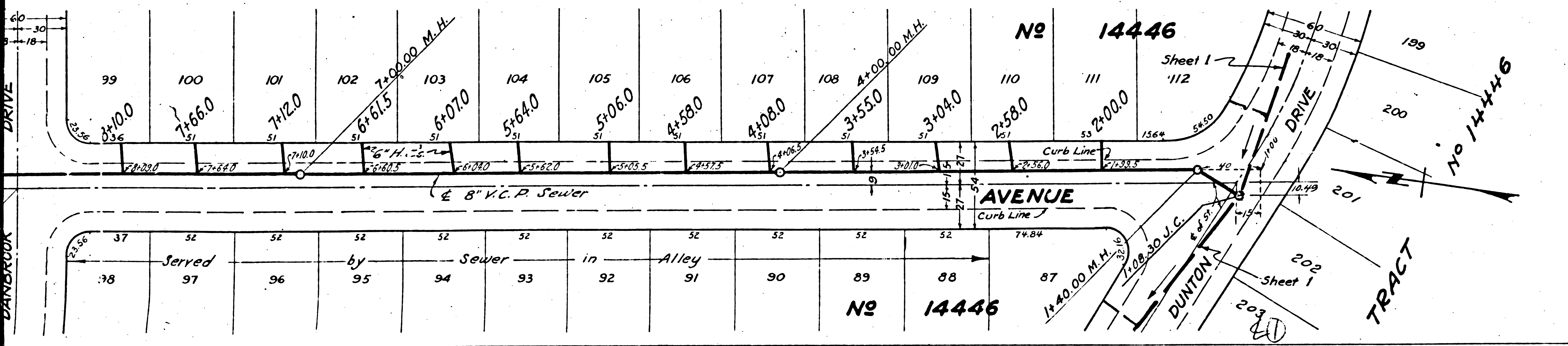
SCALE: VERT. 1"=8'  
 HORIZ. 1"=40'

JUNE 1940

PREPARED IN THE OFFICES OF  
**KEMMERER ENGR. CO.**  
 BY *Richard E. Kuhn*  
 Reg. C.E. No. 272

FOR LEGEND  
 SEE PLAN S-a-64

See sheet 1 for Construction Notes

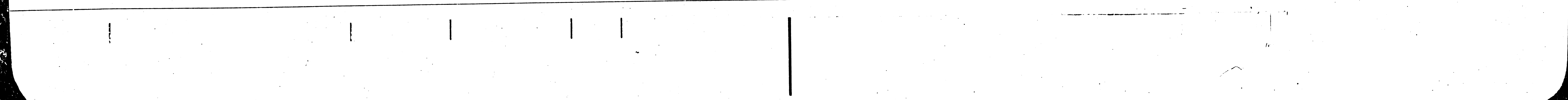
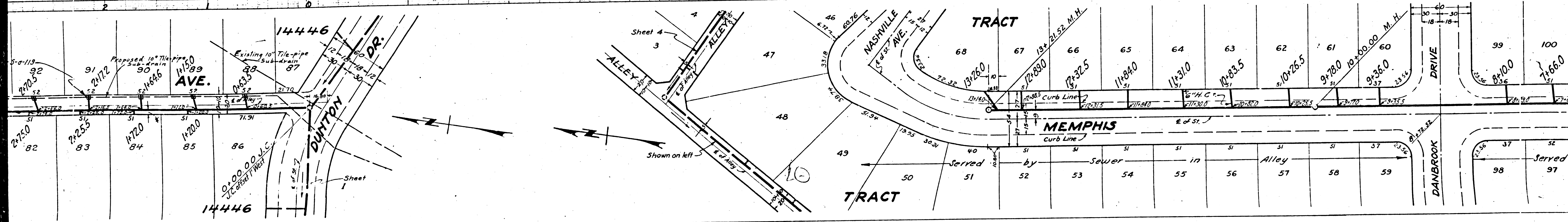
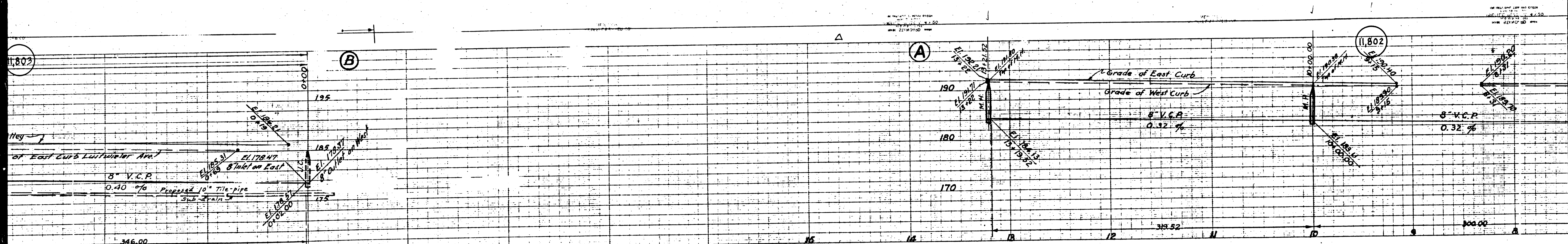


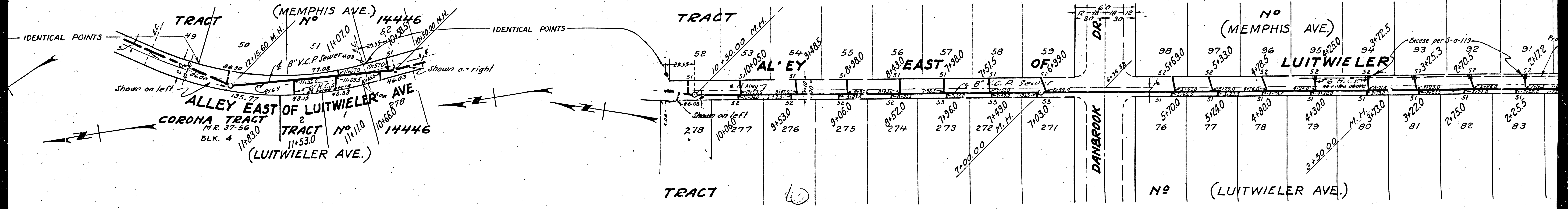
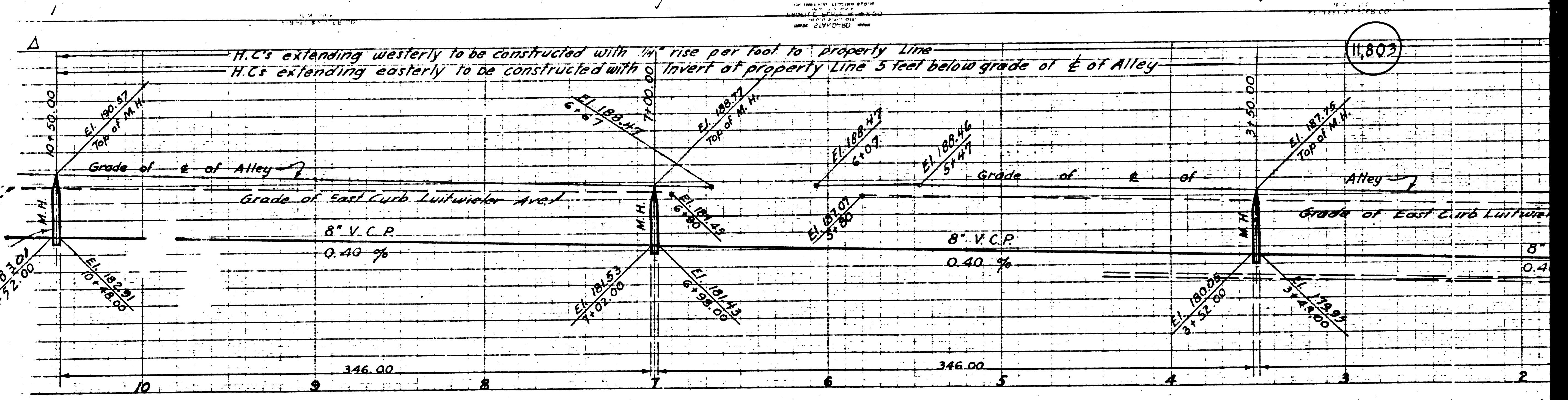
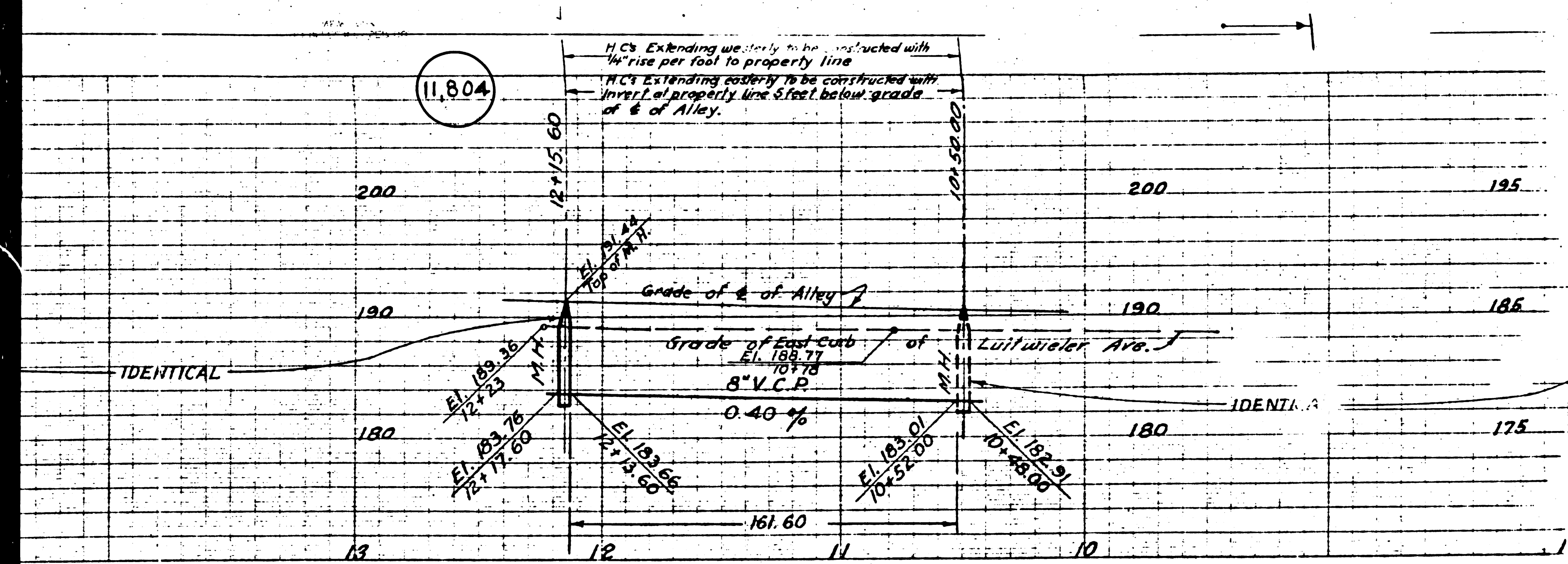
APPROVED *Richard E. Kuhn*  
 COUNTY ENGINEER

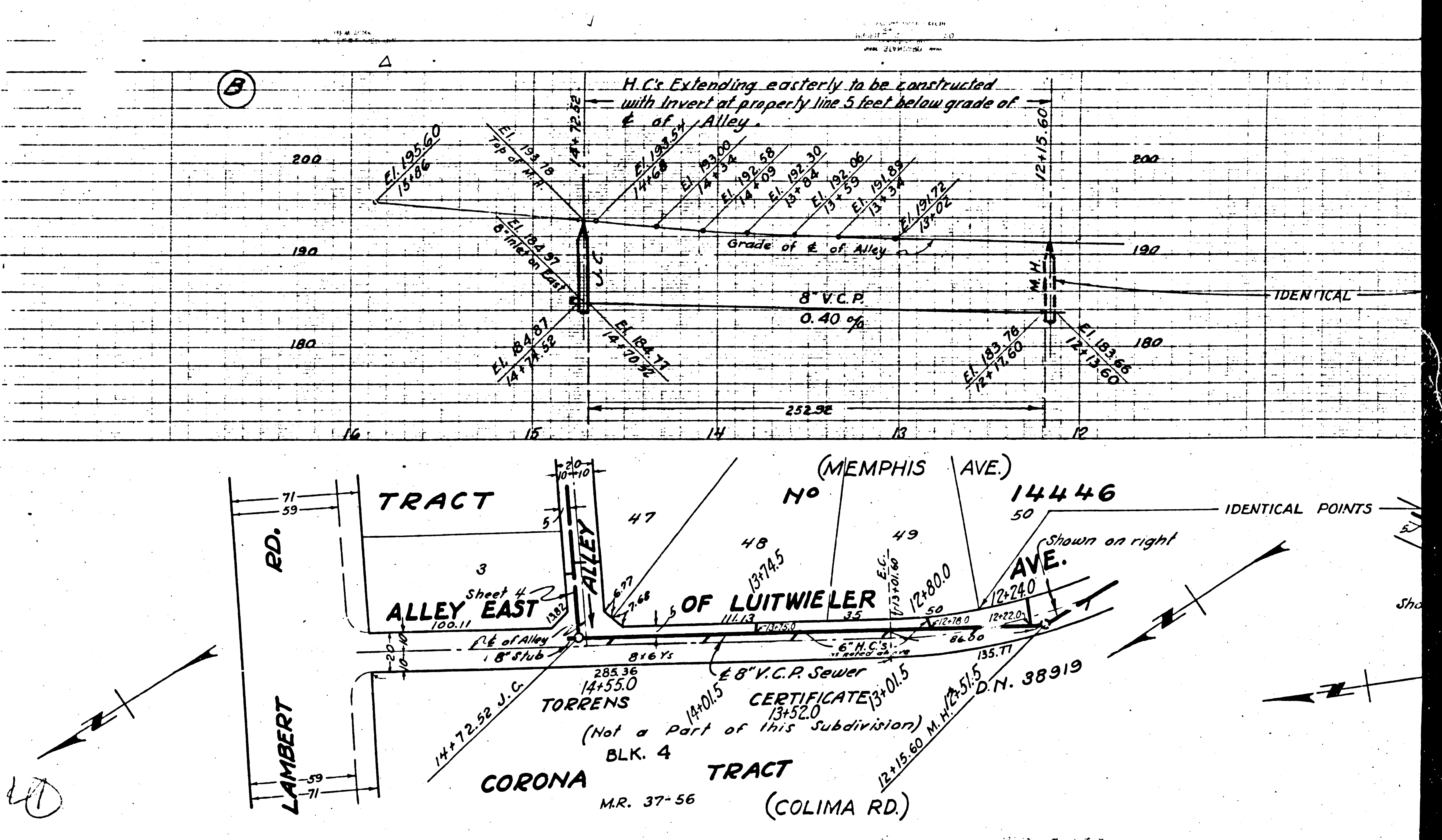
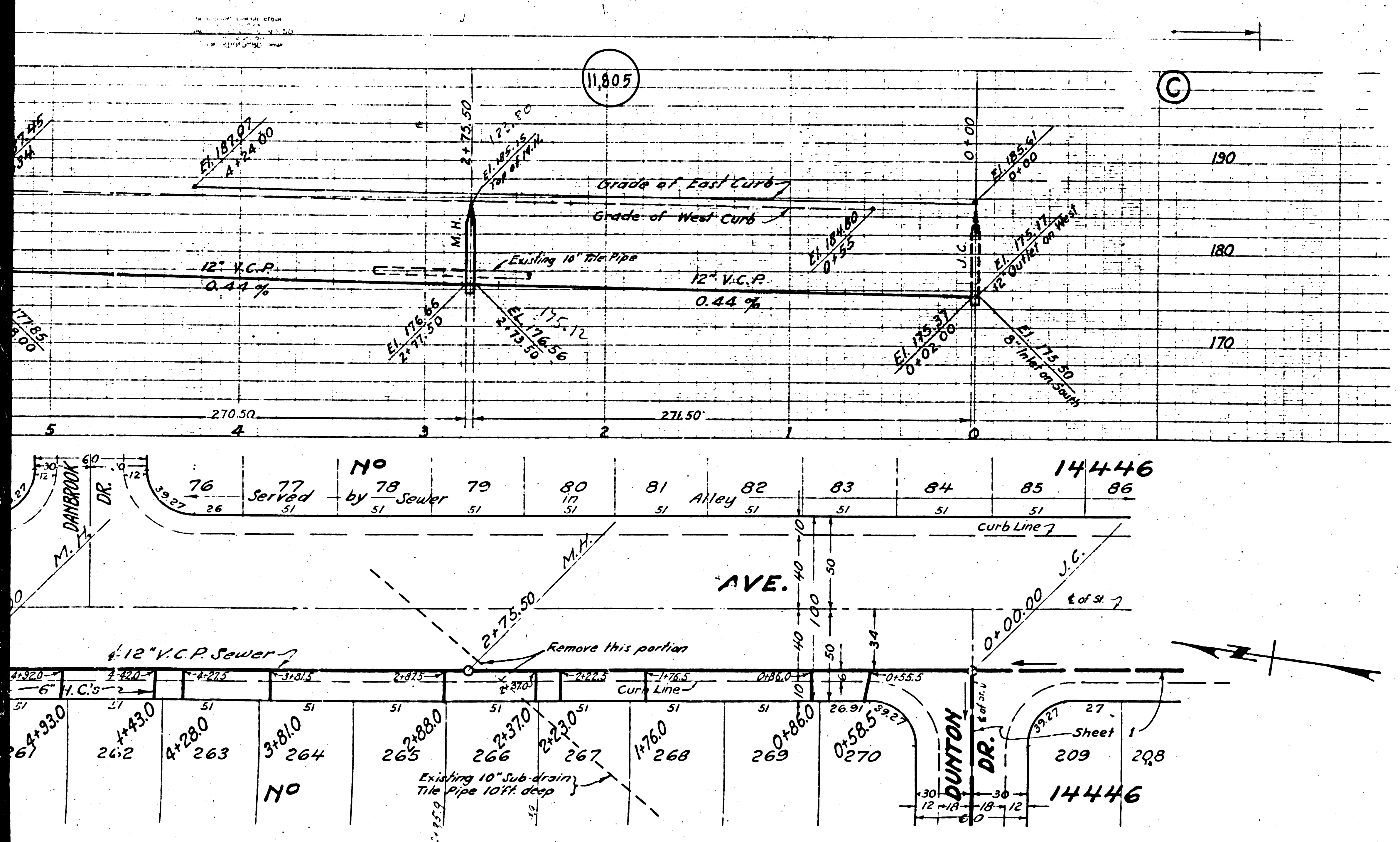
APPROVED *C. R. Compton*  
 ACT. FOR CHIEF ENGINEER COUNTY  
 SANITATION DISTRICT NO 18

CHECKED BY *Richard E. Kuhn* 3-2-53  
 OFFICE OF COUNTY ENGINEER REG. C.E.N.

check 1-5-51 *W. L. ...*





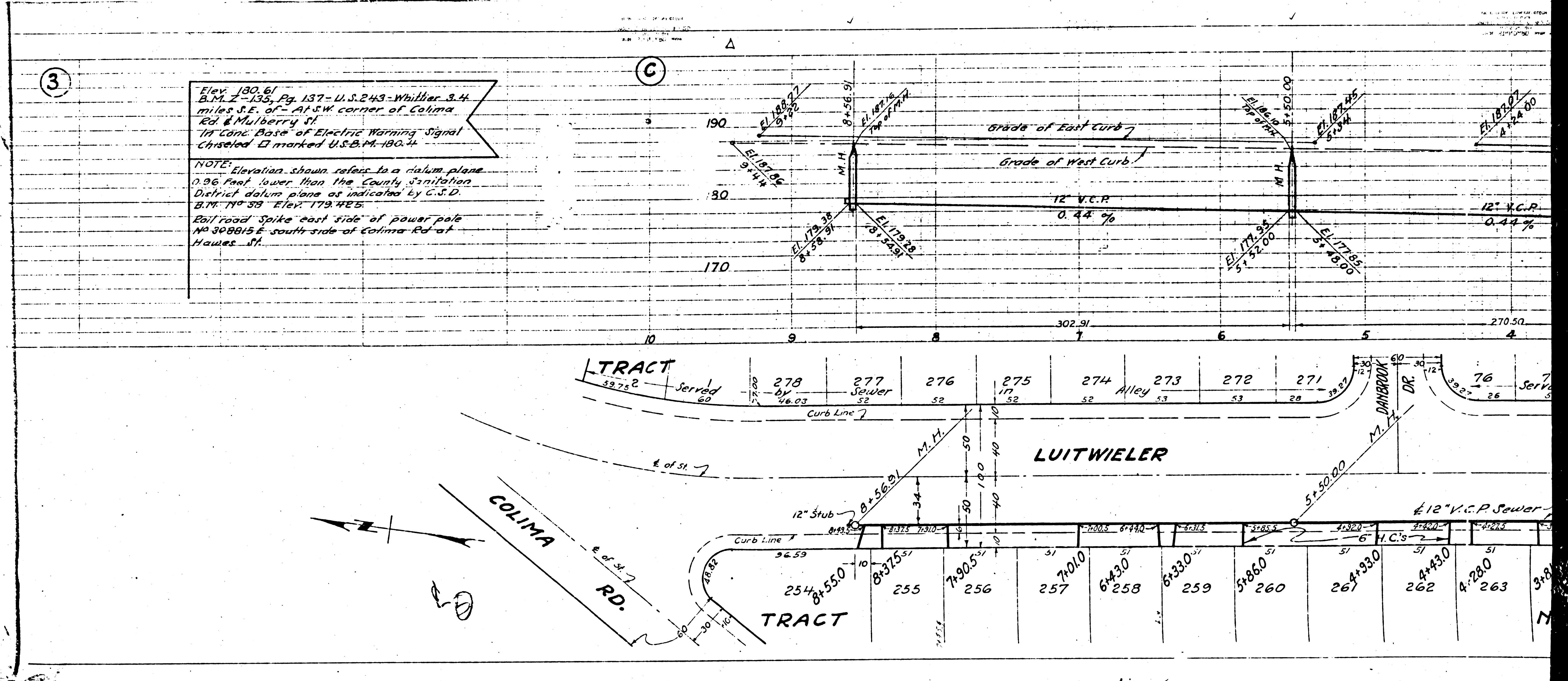


3

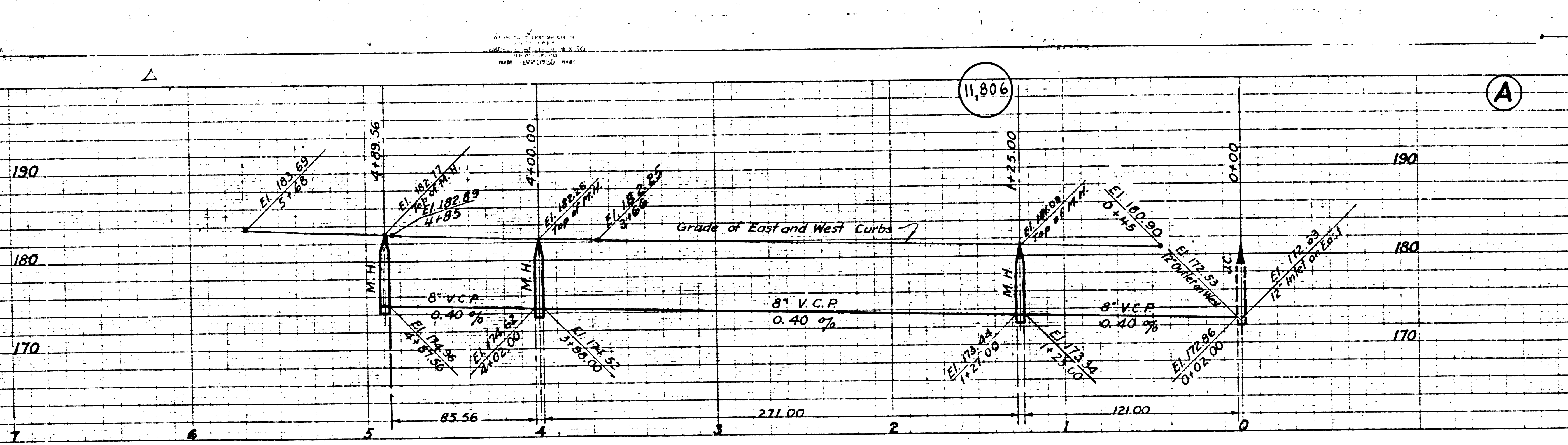
Elev. 130.61  
B.M. Z-135, Pg. 137 - U.S. 243 - Whittier 3.4  
miles S.E. of - At SW corner of Colima  
Rd & Mulberry St  
1/4 Conc. Base of Electric Warning Signal  
Chiseled "I" marked U.S.G.M. 130.4

NOTE: Elevation shown refers to a datum plane  
0.96 feet lower than the County Sanitation  
District datum plane as indicated by C.S.D.  
B.M. No 38 Elev. 173.425  
Rail road spike east side of power pole  
No 308815 E south side of Colima Rd at  
Hawes St.

C



Lot No.	Area (sq. ft.)	Area (sq. ft.)	Area (sq. ft.)	Area (sq. ft.)	Area (sq. ft.)	Area (sq. ft.)	Area (sq. ft.)	Area (sq. ft.)	Area (sq. ft.)
278	427.2	277	46.02	276	52	275	177	274	52
273	53	272	53	271	28	270	26	269	26
254	8455.0	255	8375.5	256	7905.5	257	7010	258	6430
259	6330.5	260	5860	261	26493.0	262	4443.0	263	4280



**DOUBLE SCALE**

Elev. 180.61  
 B.M. Z-135, Pg. 137 - U.S. 243 - Whittier 3.4  
 miles S.E. of - A.S.W. corner of Colima  
 Rd. & Mulberry St.  
 In Conc. Base of Electric Warning Signal  
 Chiseled & marked U.S.B.M. 186.4

NOTE: Elevation shown refers to a datum plane  
 0.96 feet lower than the County Sanitation  
 District datum plane as indicated by C.S.D.  
 B.M. No. 38 Elev. 178.225  
 Railroad Spike east side of power pole  
 No. 88815E south side of Colima Rd. at  
 Hawes St.

**PROFILE ALIGNMENT AND GRADE OF  
 SANITARY SEWERS  
 TO BE CONSTRUCTED IN  
 TRACT NO 14446  
 MOHALL LANE  
 BETWEEN DUNTON DR. AND COLIMA RD.  
 COLIMA ROAD  
 BETWEEN HAWES ST. AND LUITWILER AVE.  
 ALLEY SOUTH OF LAMBERT RD.  
 BETWEEN ALLEY EAST OF LUITWILER AVE. AND BLUEFIELD AVE.**

PRIVATE CONTRACT NO 1419  
 W.S. 34  
 SHEET NO 4 OF 4 SHEETS

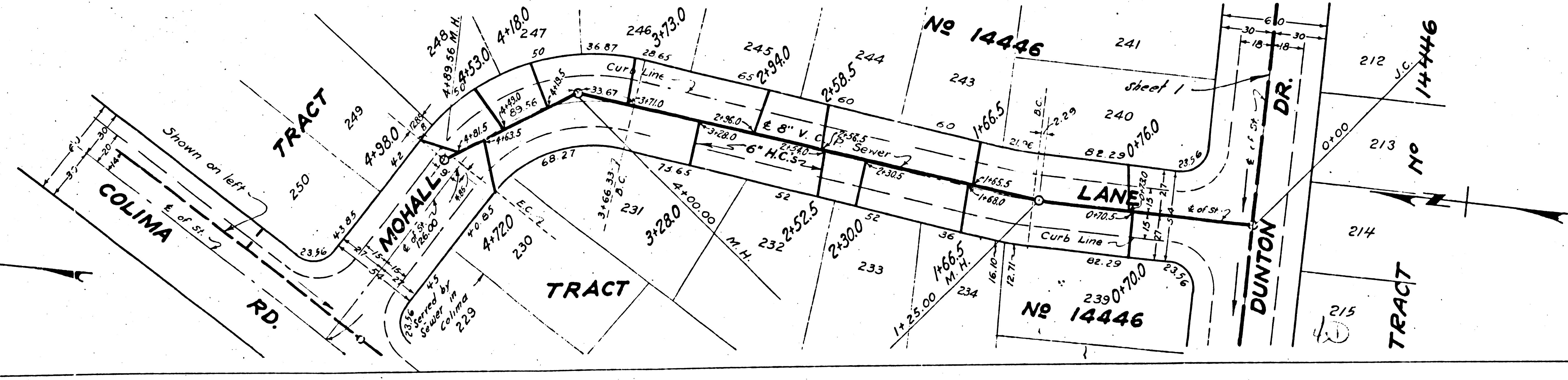
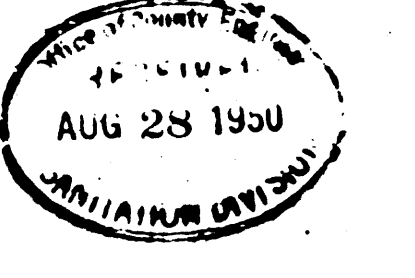
SCALE: VERT. 1"=8'  
 HORIZ. 1"=40'

JUNE 1950.

PREPARED IN THE OFFICES OF  
**KEMMERER ENGR. CO.**  
 BY *John P. Kemmerer*  
 Reg. C.E. No. 272

FOR LEGEND  
 SEE PLAN S-a-64

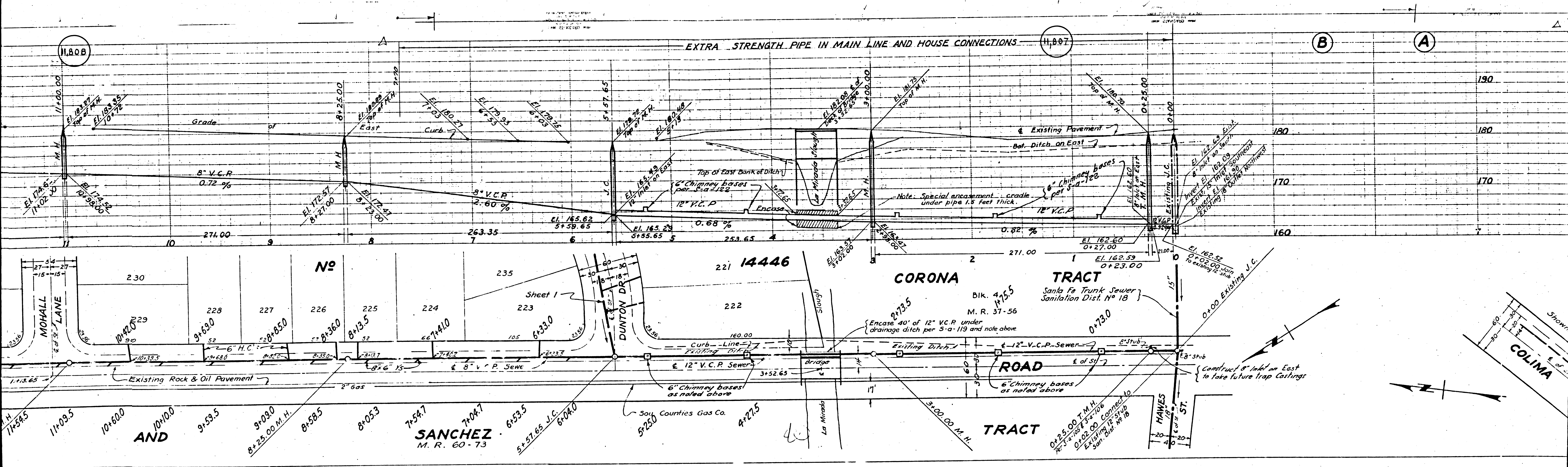
See sheet 1 for Construction Notes



APPROVED *[Signature]*  
 COUNTY ENGINEER

APPROVED *[Signature]*  
 ACT. FOR CHIEF ENGINEER COUNTY  
 SANITATION DISTRICT NO 18

CHECKED BY *[Signature]*  
 OFFICE OF COUNTY ENGINEER REG. C.E. NO 7860



EXTRA STRENGTH PIPE IN MAIN LINE AND HOUSE CONNECTIONS

H.307

B

A

CORONA TRACT

Santa Fe Trunk Sewer Sanitation Dist. No 18

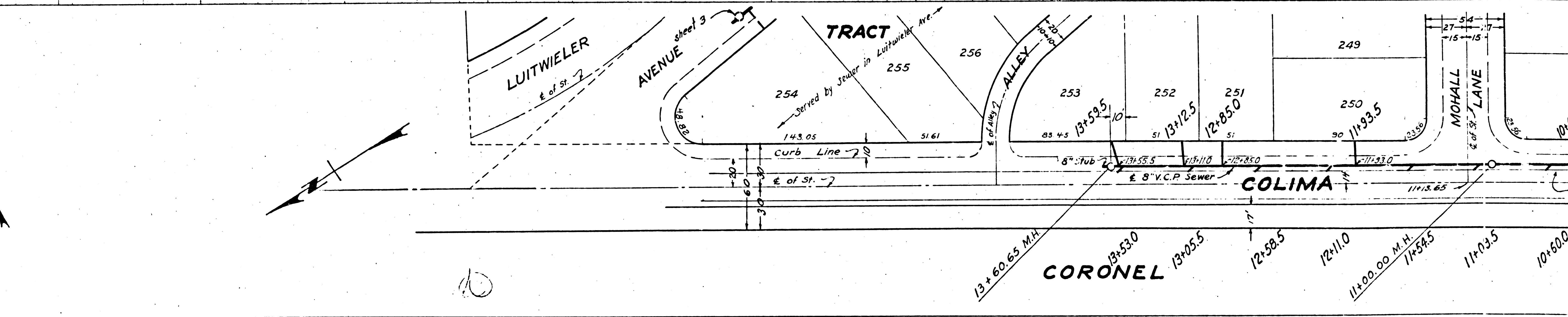
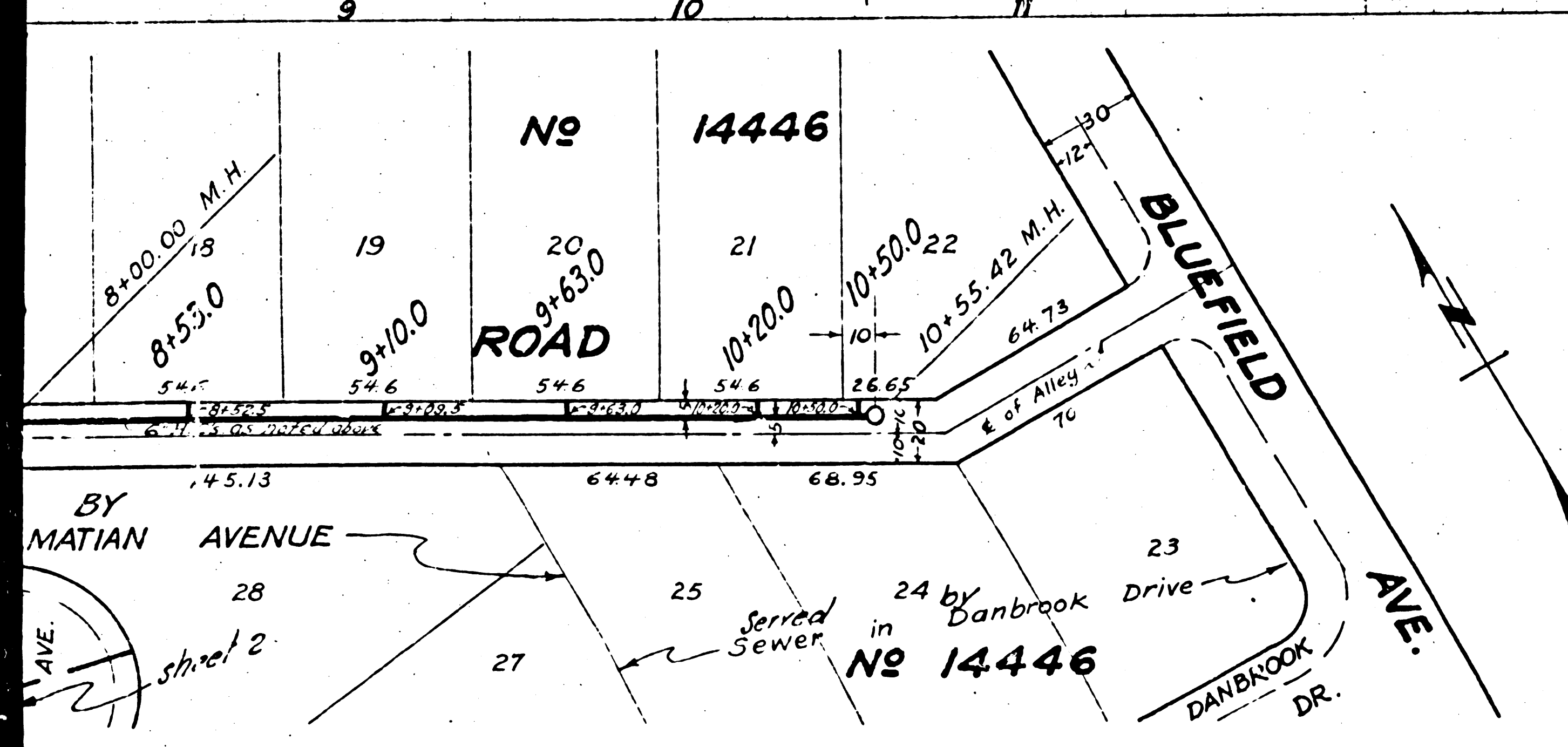
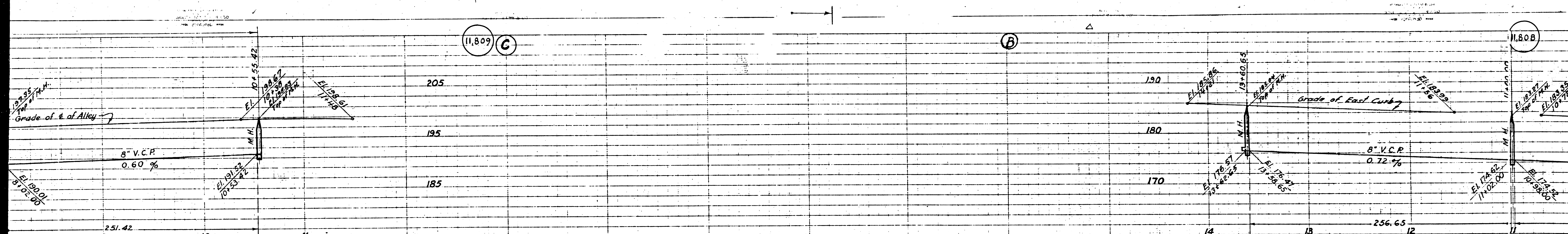
Bik. 4155 M.R. 37-56

ROAD

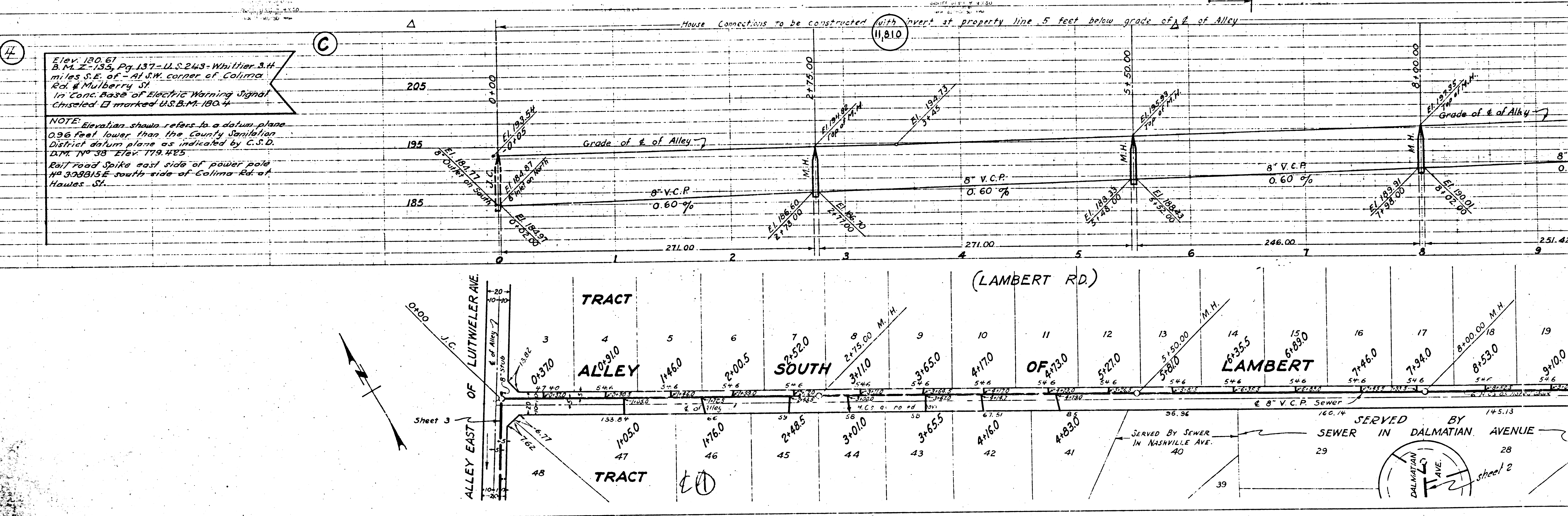
SANCHEZ M.R. 60-73

AND

COLIMA







Elev. 180.61  
 B.M. Z-133, Pg. 137-U.S. 243-Whittier S.H.  
 miles S.E. of - At SW corner of Colima  
 Rd. & Mulberry St.  
 in "Cone. Base of Electric Warning Signal  
 Unseled □ marked U.S.B.M. 180-4

NOTE: Elevation shown refers to a datum plane  
 0.96 feet lower than the County Sanitation  
 District datum plane as indicated by C.S.D.  
 DTM. No. 38 Elev. 179.425  
 East Road Spike east side of power pole  
 No. 308315E south side of Colima Rd. at  
 Hawes St.

