

B.M. 125 Elev. 48.21 L.B. 2433
 Spike in S. Curb & with End C.R. SW Cor.
 Poinsettia Pl. and Hampton Road
 B.M. 126 Elev. 50.44 L.B. 218 38
 Spike in S. Curb & with NW Cor.
 Poinsettia Pl. and Hampton Road

- 11,049
- (1) USE STANDARD MANHOLE FRAME AND COVER, S-B-117
 - (2) USE STANDARD STRENGTH PIPE
 - (3) USE CEMENT MORTAR FOR ALL VITREOUS CLAY PIPE JOINTS
 - (4) REINFORCE ALL TRENCH SAVING DOWNSIDE AREA TO MEET LOS ANGELES COUNTY ROAD DEPT. REQUIREMENTS ACCORDING TO PERMIT
 - (5) CONNECT HOUSE CONNECTIONS WITH INVERT AT PROPERTY LINE (6) FEET BELOW CURB GRADE
 - (6) ALL STRUCTURES SHALL BE BRICK SEWER STRUCTURES, S-B-104

NOTE: NO REPRESENTATIVE OF THE COUNTY ENGINEER WILL SURVEY OR LAY OUT ANY PORTION OF THE WORK. THE DIMENSIONAL AUTHORITY TO REPRESENTATIVE SHALL REMAIN THE COUNTY ENGINEER. SEE GRAD SHEETS AND STATIONS OF ALL HOUSE CONNECTIONS AND TRENCHES AND SHALL PROVIDE SHAKES FOR THEM AT THEIR PROPER LOCATIONS WITH STATIONING PLAINLY MARKED. ANY CHANGE OF LOCATION SHALL BE REQUESTED IN WRITING BY THE OWNER OR HIS REPRESENTATIVE. NO EQUATIONS SHALL BE MADE IN THESE PLANS WITHOUT APPROVAL OF THE COUNTY ENGINEER.

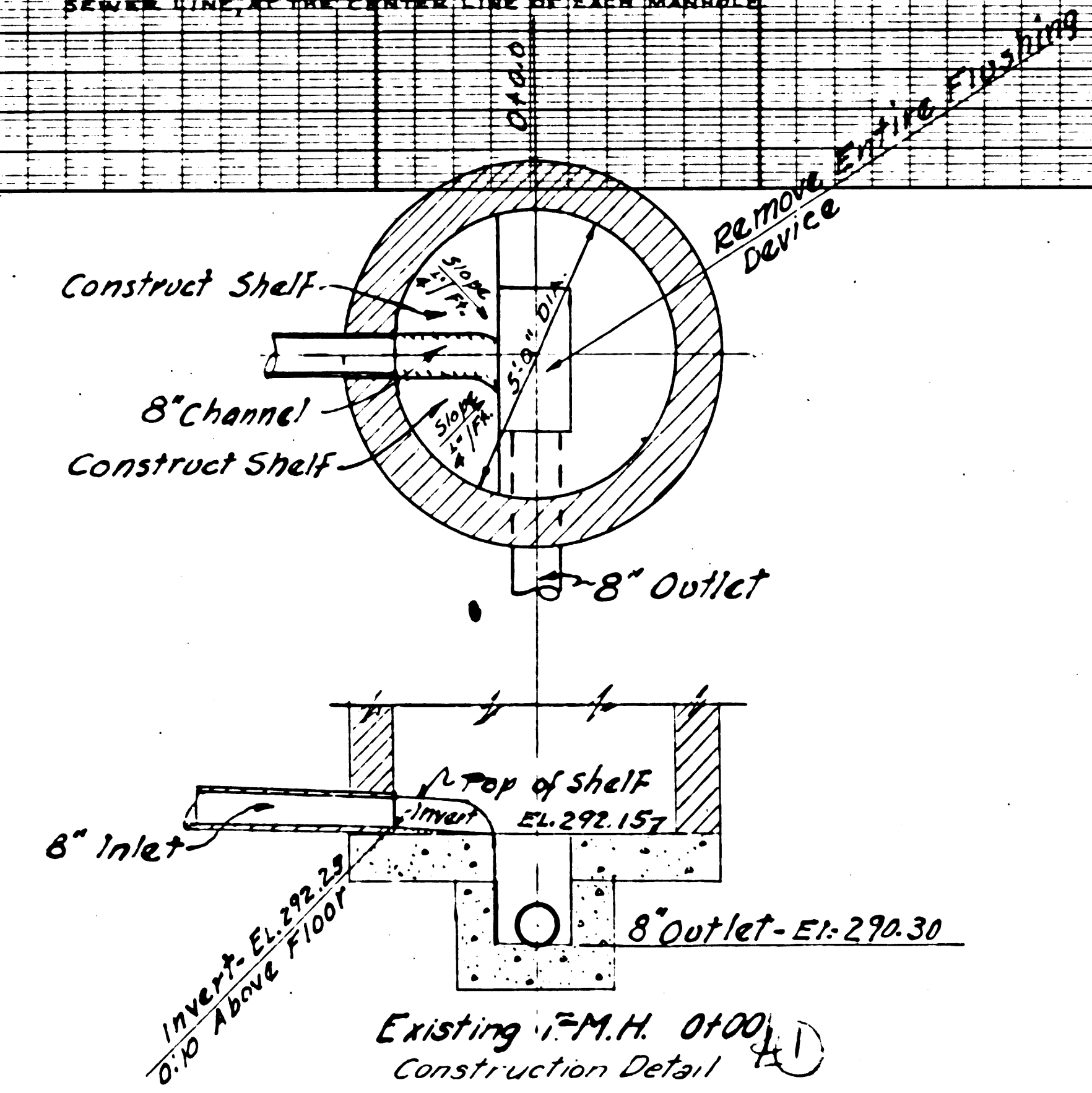
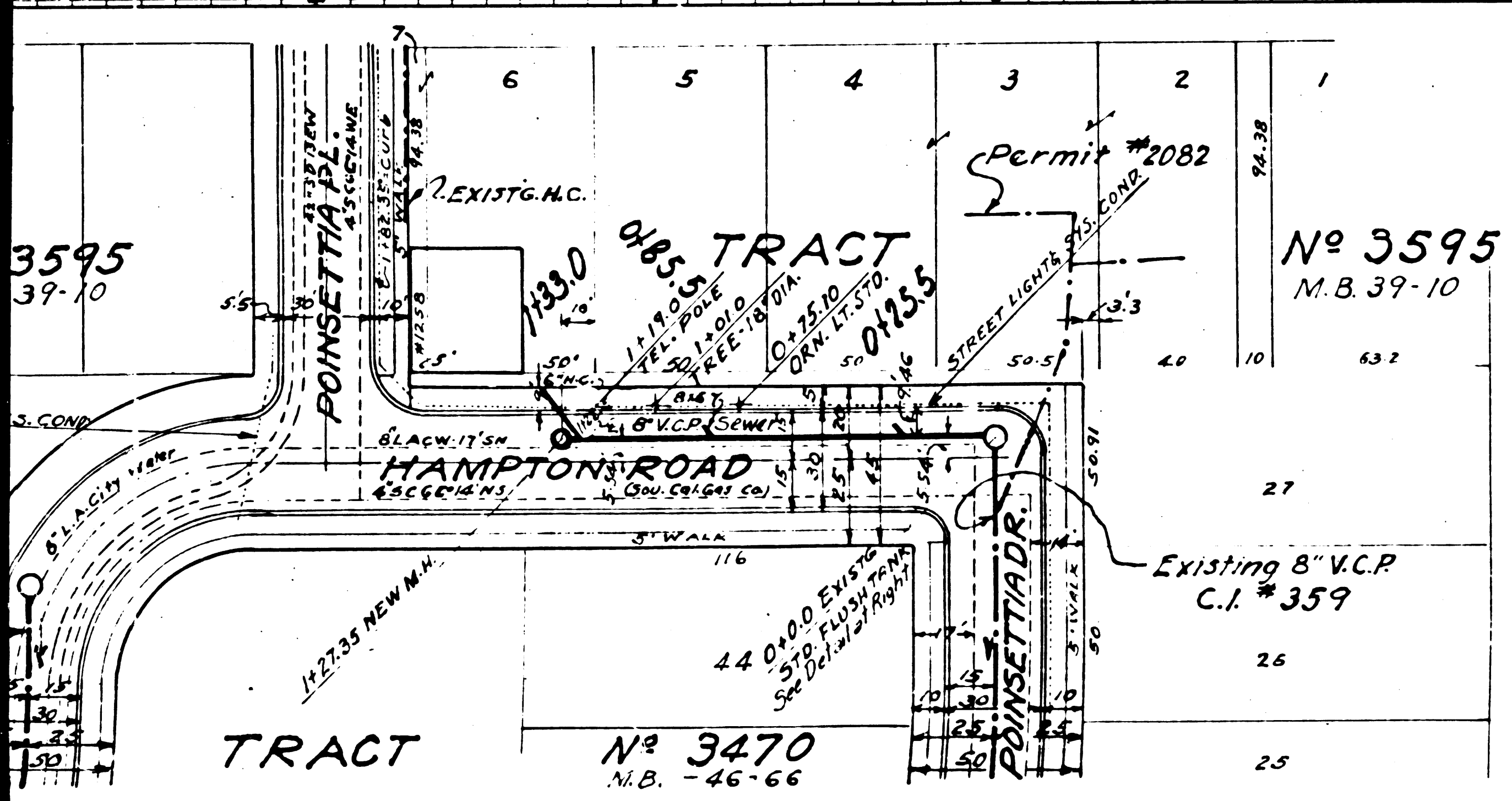
NOTE: PROVIDE STAKES ON THE PROPERTY LINES OF PROPERTY LINES PRODUCED AT RIGHT ANGLES TO THE SEWER LINE, AT THE CENTER LINE OF EACH MANHOLE.

PROFILE, ALIGNMENT AND GRADE OF
SANITARY SEWER
 TO BE CONSTRUCTED IN
HAMPTON ROAD
 BETWEEN POINSETTIA & AND POINSETTIA DR.

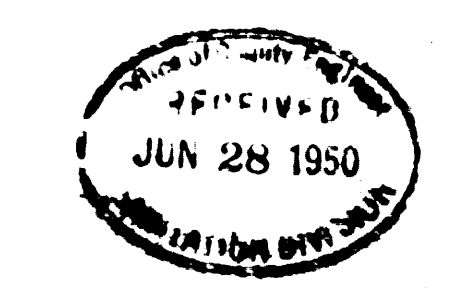
PRIVATE CONTRACT NO 1427
 W.S. 22
 SHEET 1 OF 1 SHEET
 PREPARED IN THE OFFICE OF

BY: *John S. Johnson*
 REG. C.E. NO. 1123

SCALE: VERT. 1"=4'
 HORIZ. 1"=40'



NOTE: GRADES TO WHICH THIS IMPROVEMENT IS TO BE CONSTRUCTED ARE SHOWN ON PLANS AND PROFILE. GRADE POINTS FOR TOP OF CURB, CENTER LINE OF STREET ARE SHOWN BY CIRCLES ON PROFILE. AT ALL POINTS BETWEEN DESIGNATED POINTS THE GRADE SHALL BE ESTABLISHED SO AS TO CONFORM TO A STRAIGHT LINE DRAWN BETWEEN SAID DESIGNATED POINTS. ELEVATIONS ARE IN FEET ABOVE U.S.G.S. DATUM OR MEAN SEA LEVEL. THIS DRAWING AND THE DATA HEREON ARE HEREBY MADE A PART OF THE SPECIFICATIONS. WORK SHALL BE CONSTRUCTED ACCORDING TO SPECIFICATIONS ON FILE IN THE OFFICE OF THE COUNTY ENGINEER AND SHALL BE PROSECUTED ONLY IN THE PRESENCE OF THE COUNTY ENGINEER BEFORE WORK CAN BE STARTED. THE CONTRACTOR MUST OBTAIN A PERMIT TO EXCAVATE IN COUNTY STREETS FROM THE L.A. COUNTY ROAD DEPT., 211 S.O. MAIN STREET, AND MAKE A DEPOSIT WITH THE COUNTY ENGINEER, 828 L.A. COUNTY ENGINEERING BLDG., SUFFICIENT TO COVER THE COST OF CONSTRUCTION INSPECTION AND RECORD PLANS. APPROVAL OF THIS PLAN BY THE COUNTY OF LOS ANGELES DOES NOT CONSTITUTE A REPRESENTATION AS TO THE ACCURACY OF THE LOCATION OF, OR THE EXISTENCE, OR NON-EXISTENCE OF ANY UNDERGROUND UTILITY, PIPE, OR STRUCTURE WITHIN THE LIMITS OF THIS PROJECT.



COUNTY OF LOS ANGELES, CALIFORNIA

APPROVED: *E. J. ...*
 COUNTY ENGINEER

APPROVED: *...*
 CHIEF ENGINEER OF COUNTY
 SANITATION DISTRICT NO. 4

CHECKED BY: *H.L. ...* 6-21-1950
 OFFICE OF COUNTY ENGINEER, REG. C.E. NO. 6477

nalm