

B.M. Elev. 153.926
Spk. in lead, N.W. cor of Weir Box
S.E. Corner of Intersection of
Passons Blvd and PE. R/W
B.M. 51 Page 17, L.A. Co. Rd. Dept.

KEY MAP
Scale: 1" = 200'
P.C. 1432 JN 3523

- Notes:-
1. Use Standard Manhole Frame and Covers, S-a-117.
 2. Use Standard Strength Pipe except as noted.
 3. Use Cement Mortar for all Vitrified Clay Pipe Joints.
 4. All Structures shall be Brick Sewer Structures, S-a-104.
 5. Encase 4" of Sewer at points of Interference with poles, per S-a-118.
 6. Construct H.C.s with 1/4" rise per ft. to Property Line except as noted.

Note:-
No Representative of the County Engineer will Survey or layout any portion of the work.
The Owner or his authorized Representative shall furnish the County Engineer with Grade Sheets and Stations for all House Connections and Y-Branched and shall provide stakes for them at their proper location with stationing plainly marked. Any change of location shall be requested in writing by the Owner or his Representative.
No Revisions shall be made in these Plans without the Approval of the County Engineer.
Approval of this Plan by the County of Los Angeles does not constitute a representation as to the accuracy of the location of or the existence or non-existence of any underground Utility, Pipe or Structure within the limits of this Project.
Provide stakes at right angles to the Sewer Lines or Property Lines produced at right angles to the Sewer Lines at Center Line of each Manhole.

- PROFILE, ALIGNMENT AND GRADE OF
SANITARY SEWERS
TO BE CONSTRUCTED IN
REX ROAD
- (A) From SONGFEST DRIVE to PASSONS BOULEVARD.
 - (B) **SONGFEST DRIVE**
From REX ROAD to BASCOM STREET.
 - (C) **BASCOM STREET**
From EAST TRACT LINE to SONGFEST DRIVE.
 - (D) **BENNINGTON AVENUE**
From NORTH TRACT LINE to BASCOM STREET.

PRIVATE CONTRACT NO 1432
W.S. NO 36
SHEET 1 OF 2 SHEETS

Scale: Vert. 1" = 4'
Horiz. 1" = 40' JULY 1950.

PREPARED IN THE OFFICES OF
HAROLD M. TEGART,
By *Harold M. Tegart*
REG. C.E. No 2151
For Legend see Plan No S-a-64.

NOTES:-
Grades to which this Improvement is to be constructed are shown on Plans and Profiles.
Grade points for top of curb, center line of Streets or Center Line of Alley are shown by Circles on Profiles. At all points between designated points the grade shall be established so as to conform to a straight line between said designated points.
Elevations are in feet above U.S.S. Datum or Mean Sea Level.
This Drawing and the Data hereon are hereby made a part of the Specifications.
Work shall be constructed according to Specifications on file in the Office of the County Engineer and shall be prosecuted only in the presence of this County Engineer.
Before work can be started the Contractor must obtain a permit to excavate in a State Highway from the State Highway Department, 211 West 1st Street and make a deposit with the County Engineer, Room 828 L.A. County Engineer's Bldg. sufficient to cover the cost of Construction, Inspection and Record Plans.

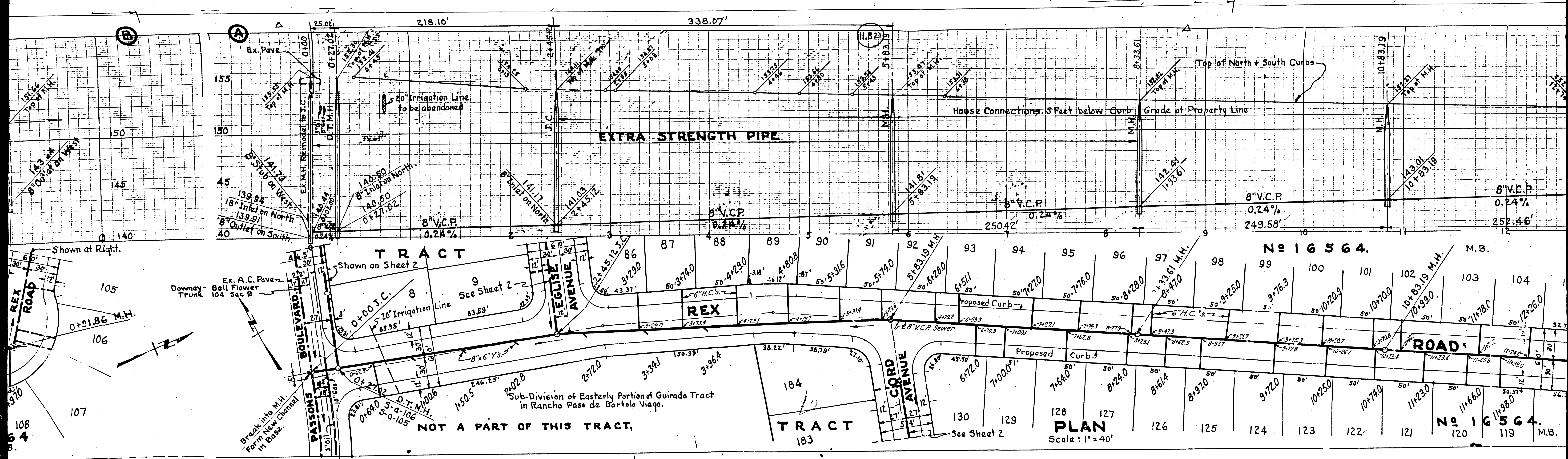
COUNTY OF LOS ANGELES, CALIFORNIA.

Approved: *[Signature]*
County Engineer

Approved: *[Signature]* OFFICE ENGINEER
For Chief Engineer of County
Sanitation District No 2.

Checked: *[Signature]*
Office of County Engineer, R.E. No 7676

P.C. 1432 JN 3523



EXTRA STRENGTH PIPE

№ 16564

M.B.

Shown at Right.

TRACT

Sub-Division of Easterly Portion of Guirado Tract
in Rancho Paso de Bartolo Viejo.

NOT A PART OF THIS TRACT,

TRACT

PLAN

Scale: 1" = 40'

№ 16564

M.B.

Downway Trunk
Ball Flower
104 Sec B

Break into M.H.
Form New Channel
in Base.

PAISSONS
BOULEVARD

EGLEISE
AVENUE

CORD
AVENUE

ROAD

0+91.86 M.H.

0+00 J.C.

83.59'

43.37'

50' 4+29.0

50' 5+31.6

50' 5+74.0

50' 6+28.0

50' 7+76.0

50' 8+28.0

50' 9+25.0

50' 10+20.9

105

106

107

108

8

9

86

87

88

89

90

91

92

93

94

109

110

111

112

113

114

115

116

117

118

119

120

121

122

123

124

125

126

127

128

129

130

131

132

133

134

135

136

137

138

139

140

141

142

143

144

145

146

147

148

149

150

151

152

153

154

155

156

157

158

159

160

161

162

163

164

165

166

167

168

169

170

171

172

173

174

175

176

177

178

179

180

181

182

183

184

185

186

187

188

189

190

191

192

193

194

195

196

197

198

199

200

201

202

203

204

205

206

207

208

209

210

211

212

213

214

215

216

217

218

219

220

221

222

223

224

225

226

227

228

229

230

231

232

233

234

235

236

237

238

239

240

241

242

243

244

245

246

247

248

249

250

251

252

253

254

255

256

257

258

259

260

261

262

263

264

265

266

267

268

269

270

271

272

273

274

275

276

277

278

279

280

281

282

283

284

285

286

287

288

289

290

291

292

293

294

295

296

297

298

299

300

301

302

303

304

305

306

307

308

309

310

311

312

313

314

315

316

317

318

319

320

321

322

323

324

325

326

327

328

329

330

331

332

333

334

335

336

337

338

339

340

341

342

343

344

345

346

347

348

349

350

351

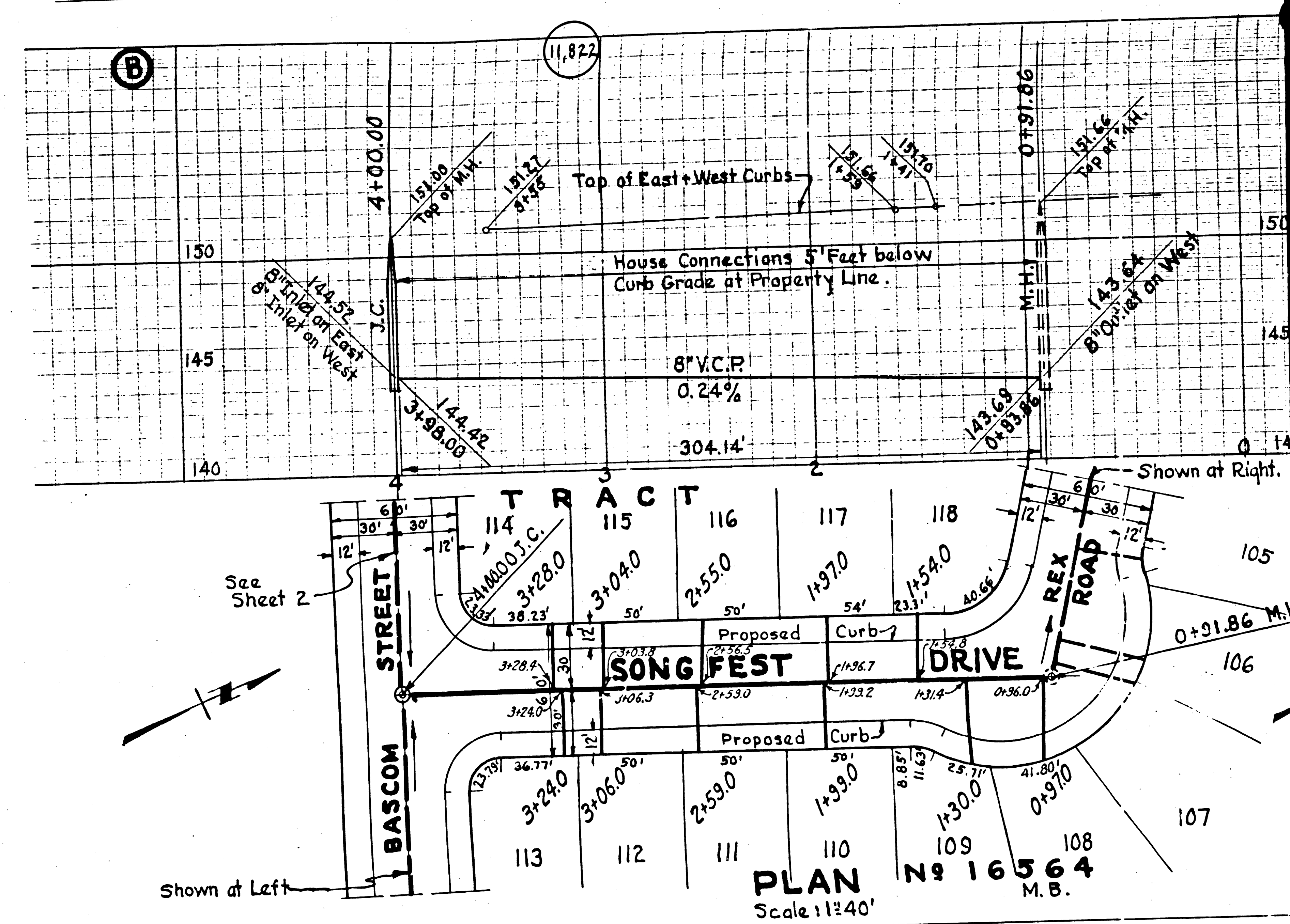
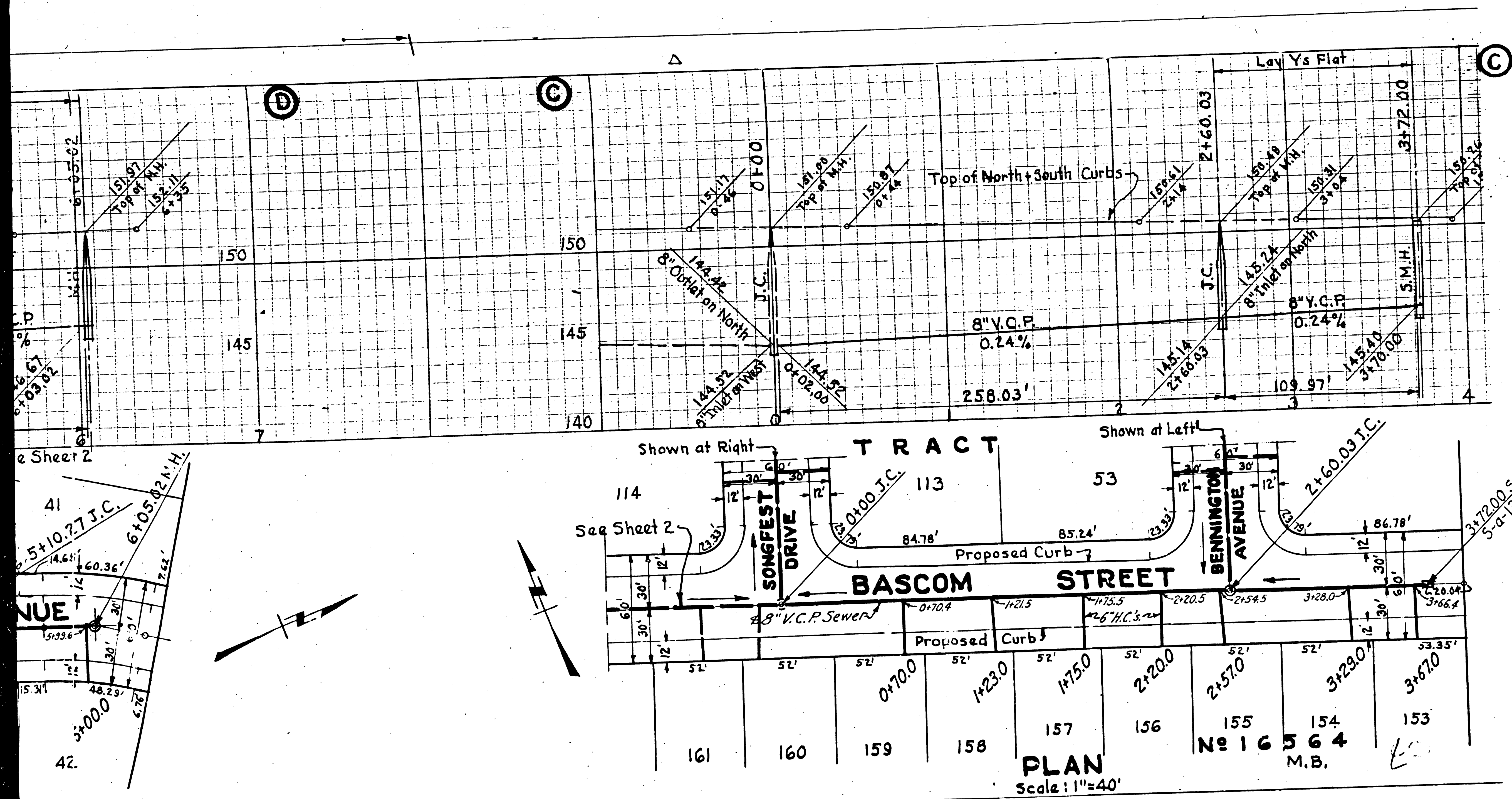
352

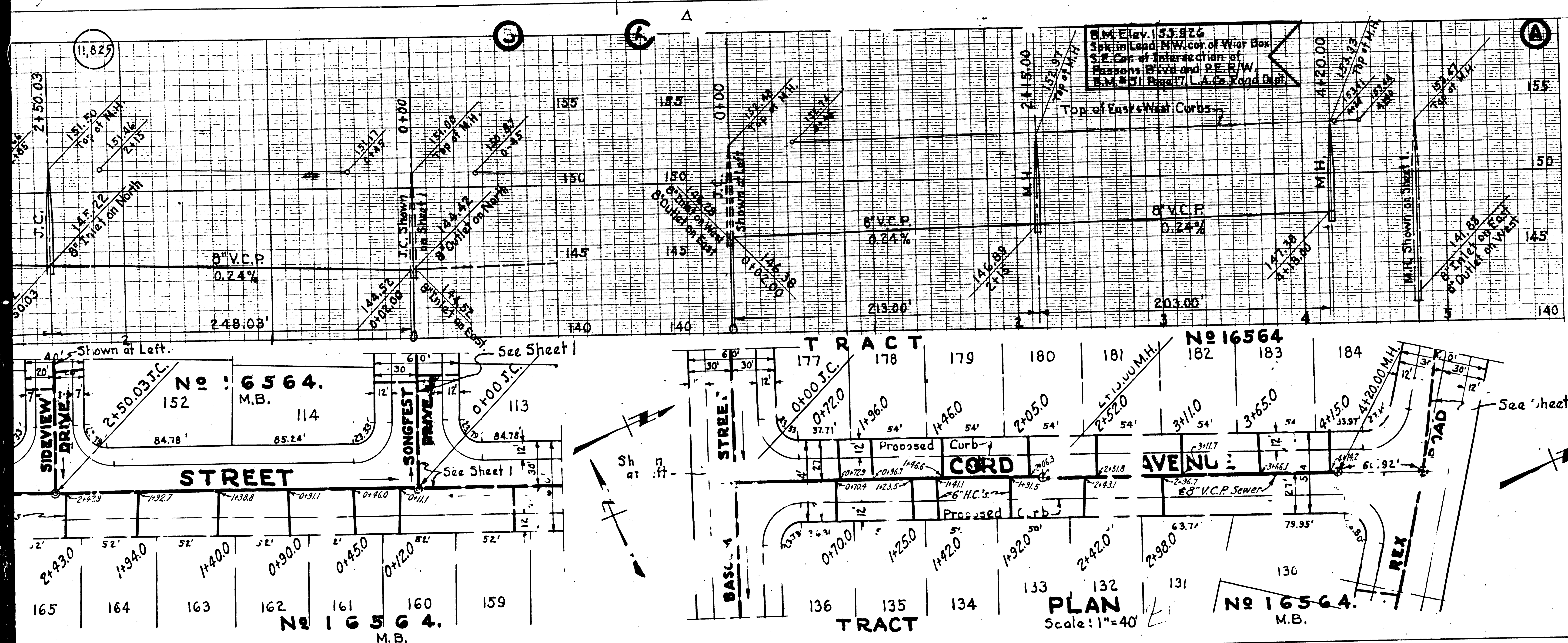
353

354

355

356

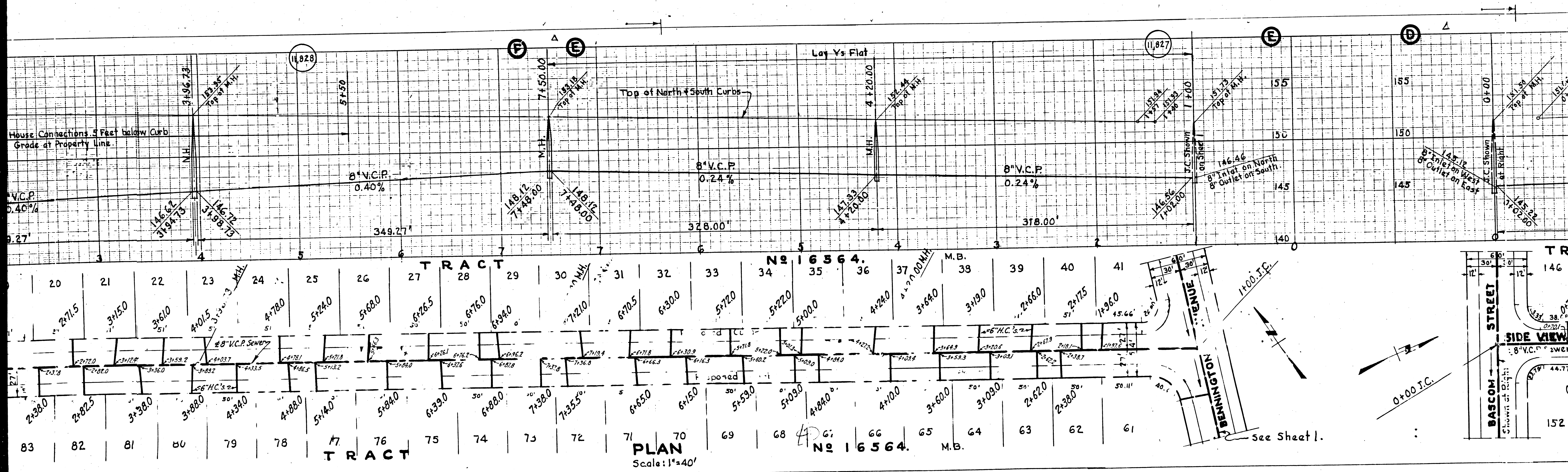


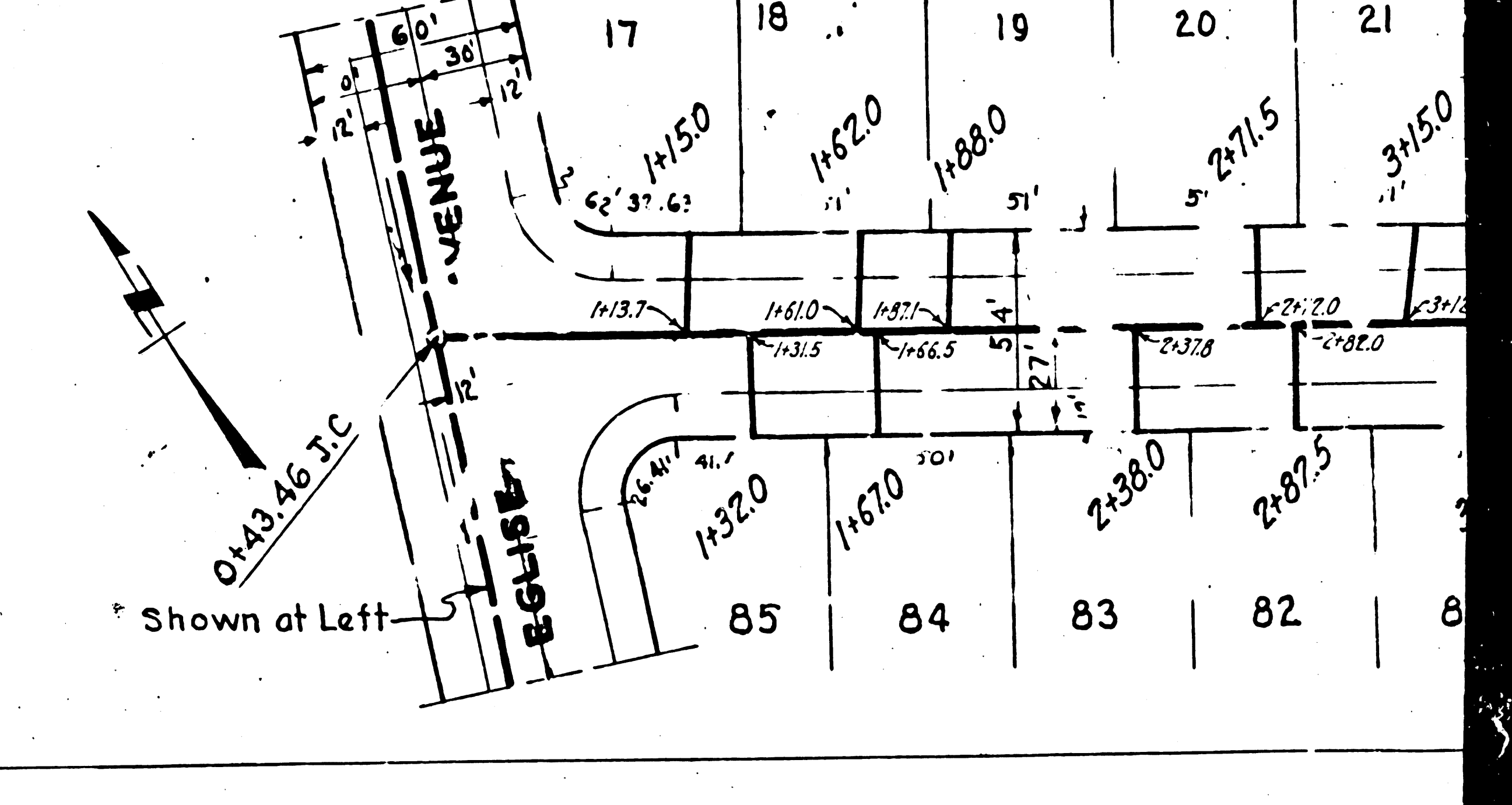
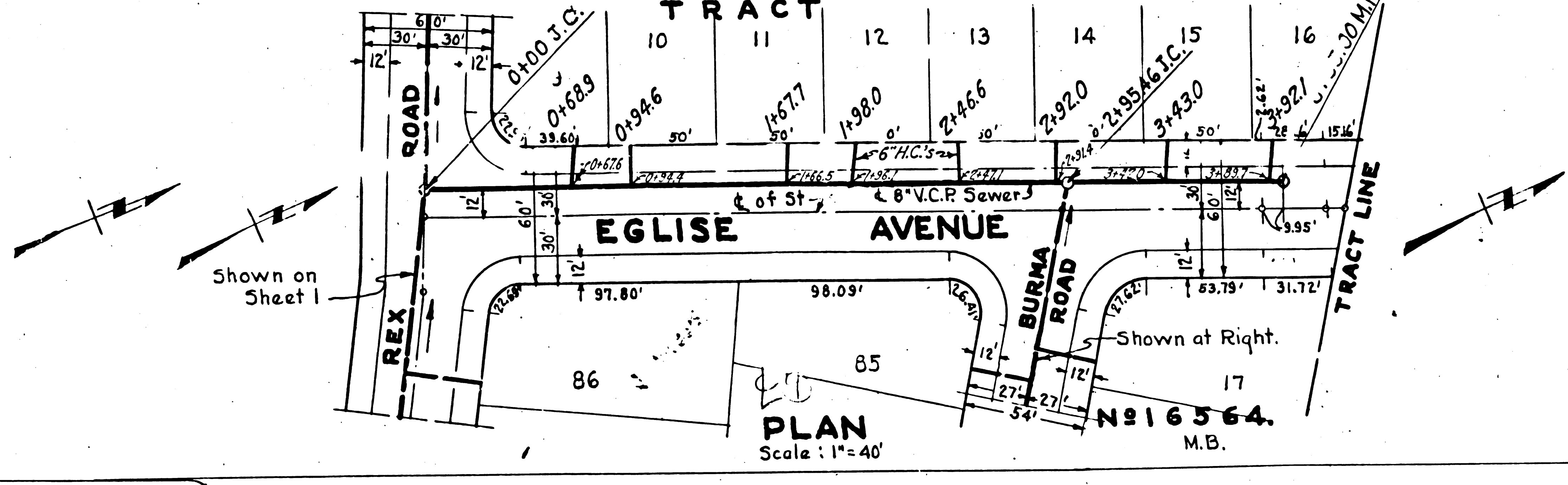
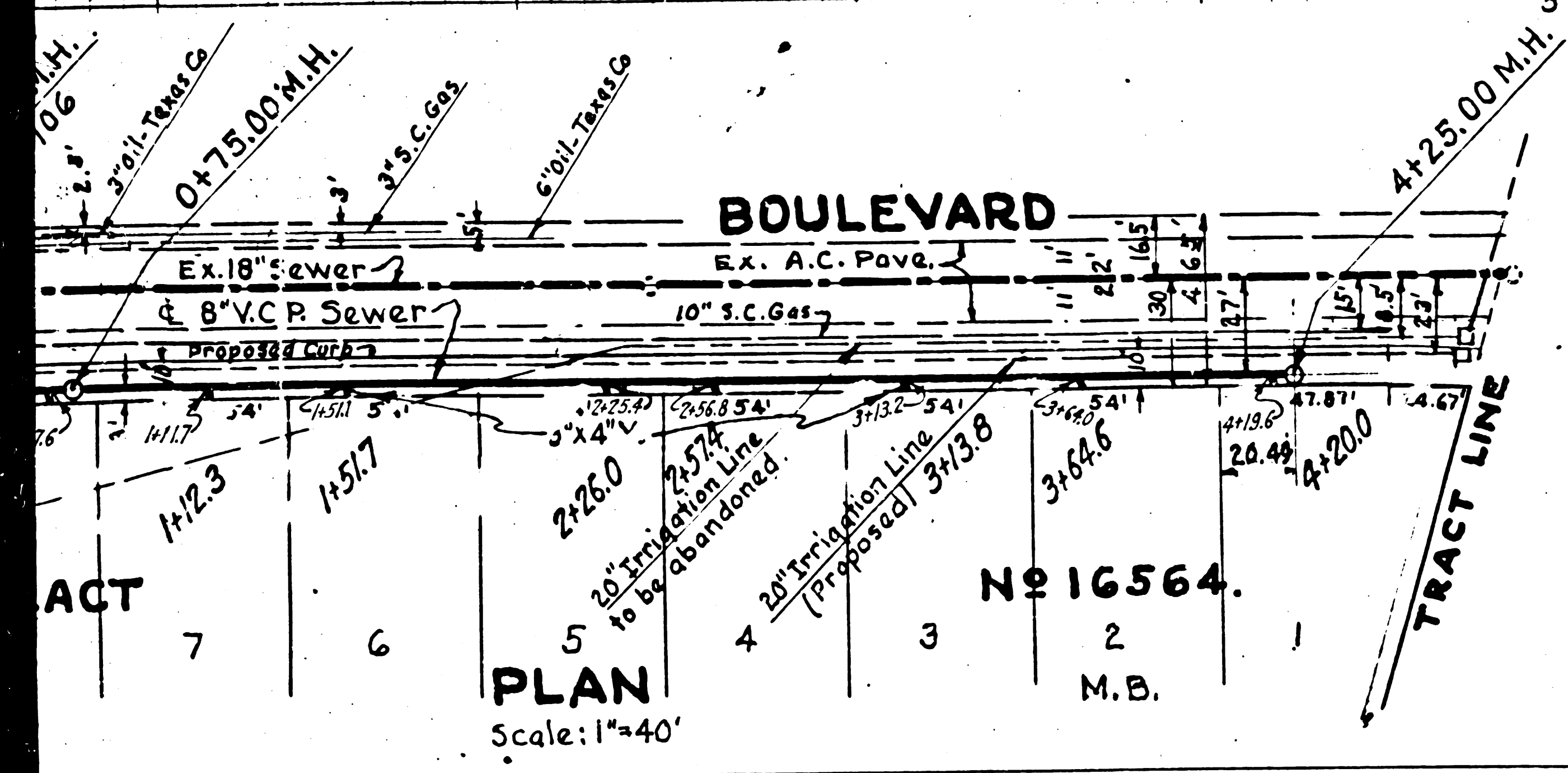
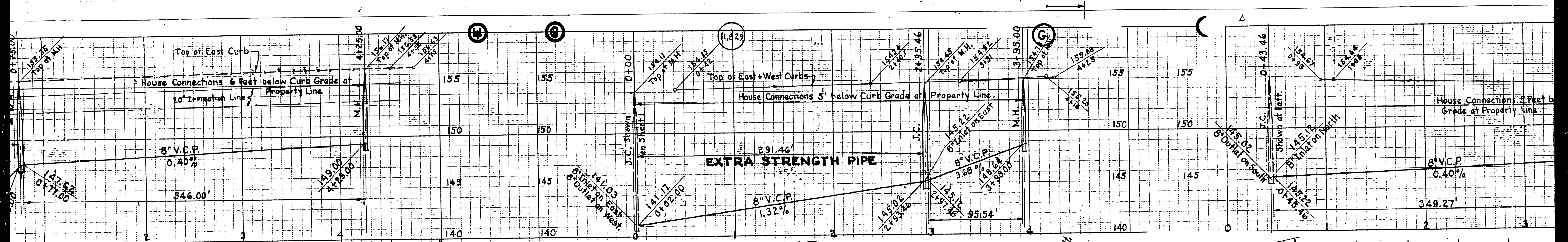


- PROFILE, ALIGNMENT AND GRADE OF
SANITARY SEWERS
 TO BE CONSTRUCTED IN
CORD AVENUE
 From REX ROAD to BASCOM STREET.
BASCOM STREET
 From SONGFEST DRIVE to WEST TRACT LINE.
HASTY AVENUE
 From 255 Feet north of BASCOM STREET to BASCOM STREET.
SIDE VIEW DRIVE
 From 200 Feet north of BASCOM STREET to BASCOM STREET.
BURMA ROAD
 From BENNINGTON AVENUE to EGLISE AVENUE.
EGLISE AVENUE
 From NORTH TRACT LINE to REX ROAD.
PASSONS BOULEVARD
 From NORTH TRACT LINE to REX ROAD.

PRIVATE CONTRACT No 1432
 W.S. 36
SHEET 2 OF 2 SHEETS.
 Scale: Vert. 1"=4'
 Horiz. 1"=40'
 July 1950.
 PREPARED IN THE OFFICES OF
HAROLD M. TEGART,
 By *Harold M. Tegart*
 REG. C.E. No 2131.
 For Legend see Plan No S-a-64.
FOR CONSTRUCTION NOTES SEE SHEET No 1

COUNTY OF LOS ANGELES, CALIFORNIA.
 Approved: *[Signature]*
 County Engineer.
 Approved: *[Signature]* OFFICE ENGINEER
 Chief Engineer of County
 Sanitation District No 2.
 Checked By: *[Signature]*
 Office of County Engineer, P.E. No 7475





PLAN
Scale: 1"=40'

PLAN
Scale: 1"=40'

PLAN
Scale: 1"=40'

