

11.676

- (1) USE STANDARD MANHOLE FRAME AND COVER, S-2-117
- (2) USE EXTRA STRENGTH PIPE
- (3) USE CEMENT MORTAR FOR ALL VITRIFIED CLAY PIPE JOINTS
- (4) ENCASE FOUR FEET OF SEWER AT POINTS OF INTERFERENCE WITH POLES AS PER S-2-118
- (5) ALL STRUCTURES SHALL BE BRICK SEWER STRUCTURES, S-2-104
- (6) CONSTRUCT TOPS OF ALL STRUCTURES IN RIGHTS OF WAY 6" ABOVE FINISHED GRADE
- (7) RESURFACE ALL TRENCH WITHIN PAVED AREA TO MEET L.A. COUNTY ROAD DEPARTMENT REQUIREMENTS IN ACCORDANCE WITH PERMIT

NOTE: NO REPRESENTATIVE OF THE COUNTY ENGINEER WILL SURVEY OR LAY OUT ANY PORTION OF THE WORK. THE OWNER OR HIS AUTHORIZED REPRESENTATIVE SHALL FURNISH THE COUNTY ENGINEER WITH GRADE SHEETS AND SPECIFICATIONS OF ALL STRUCTURES AND SHALL PROVIDE STAKES FOR THE WORK AT THE PROPER LOCATIONS WITH STATIONING PLAINLY MARKED. ANY CHANGE OF LOCATION SHALL BE REQUESTED IN WRITING BY THE OWNER OR HIS REPRESENTATIVE. NO REVISIONS SHALL BE MADE IN THESE PLANS WITHOUT APPROVAL OF THE COUNTY ENGINEER. PROVIDE STAKES ON THE PROPERTY LINES OR PROPERTY LINES PRODUCED AT RIGHT ANGLES TO THE SEWER LINE AT THE CENTER LINE OF EACH INTERFERENCE.

PROFILE, ALIGNMENT AND GRADE OF
SANITARY SEWER
 TO BE CONSTRUCTED IN
A SANITARY SEWER RIGHT OF WAY
 ALONG
SEPULVEDA BOULEVARD
 FROM DOLORES STREET EASTERLY 442 FEET
 THENCE
SOUTHERLY IN AN ALLEY
 FROM SEPULVEDA BOULEVARD TO SANTA FE
 RAILWAY RIGHT OF WAY
 PRIVATE CONTRACT NO. 1433
 W.S. 28

SCALE: VERT. 1" = 4'-0"
 HORIZ. 1" = 40'-0" SHEET 1 OF 1 SHEET JUNE 1980

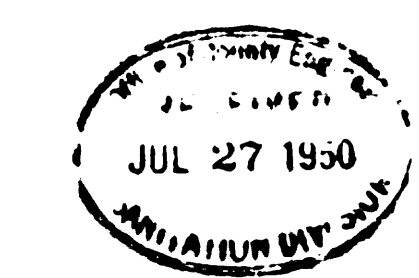
PREPARED IN THE OFFICE OF
DONALD R. WARREN CO.
 ENGINEERS

BY *Carl E. Nelson*
 REG. C.E. NO. 5534
 FOR LEGEND
 SEE PLAN NO. S-4-64
 COUNTY OF LOS ANGELES, CALIFORNIA

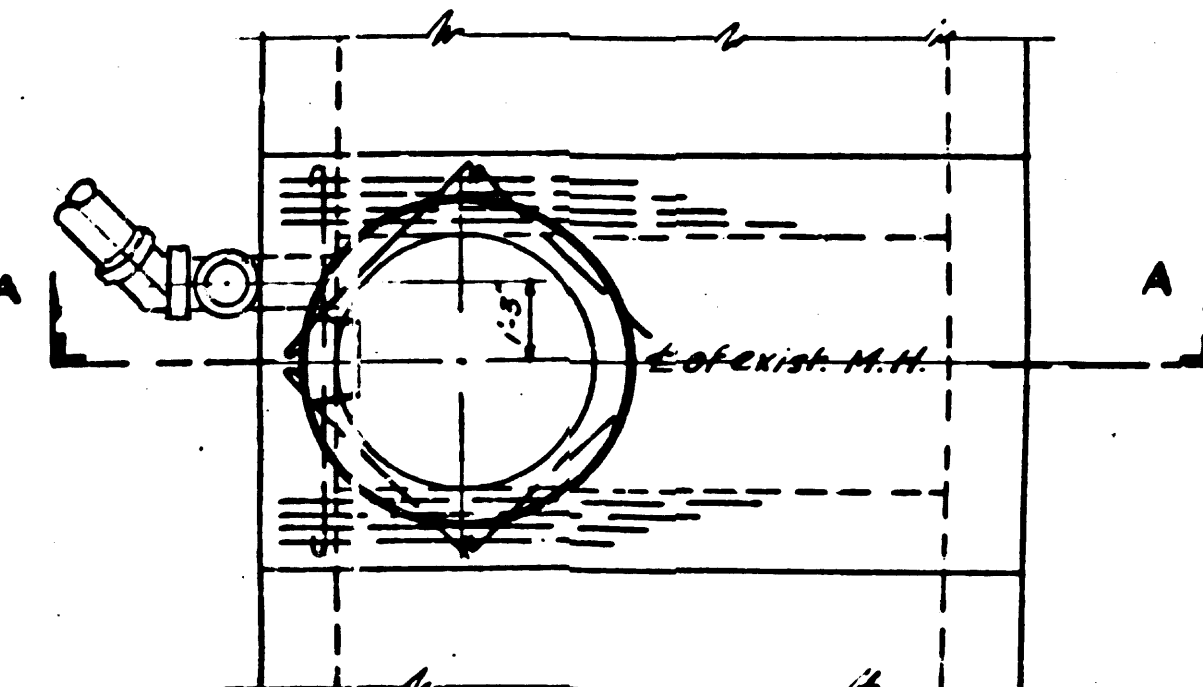
APPROVED *[Signature]*
 COUNTY ENGINEER

APPROVED *[Signature]*
 CHIEF ENGINEER OF COUNTY
 SANITATION DISTRICT NO. 2 B

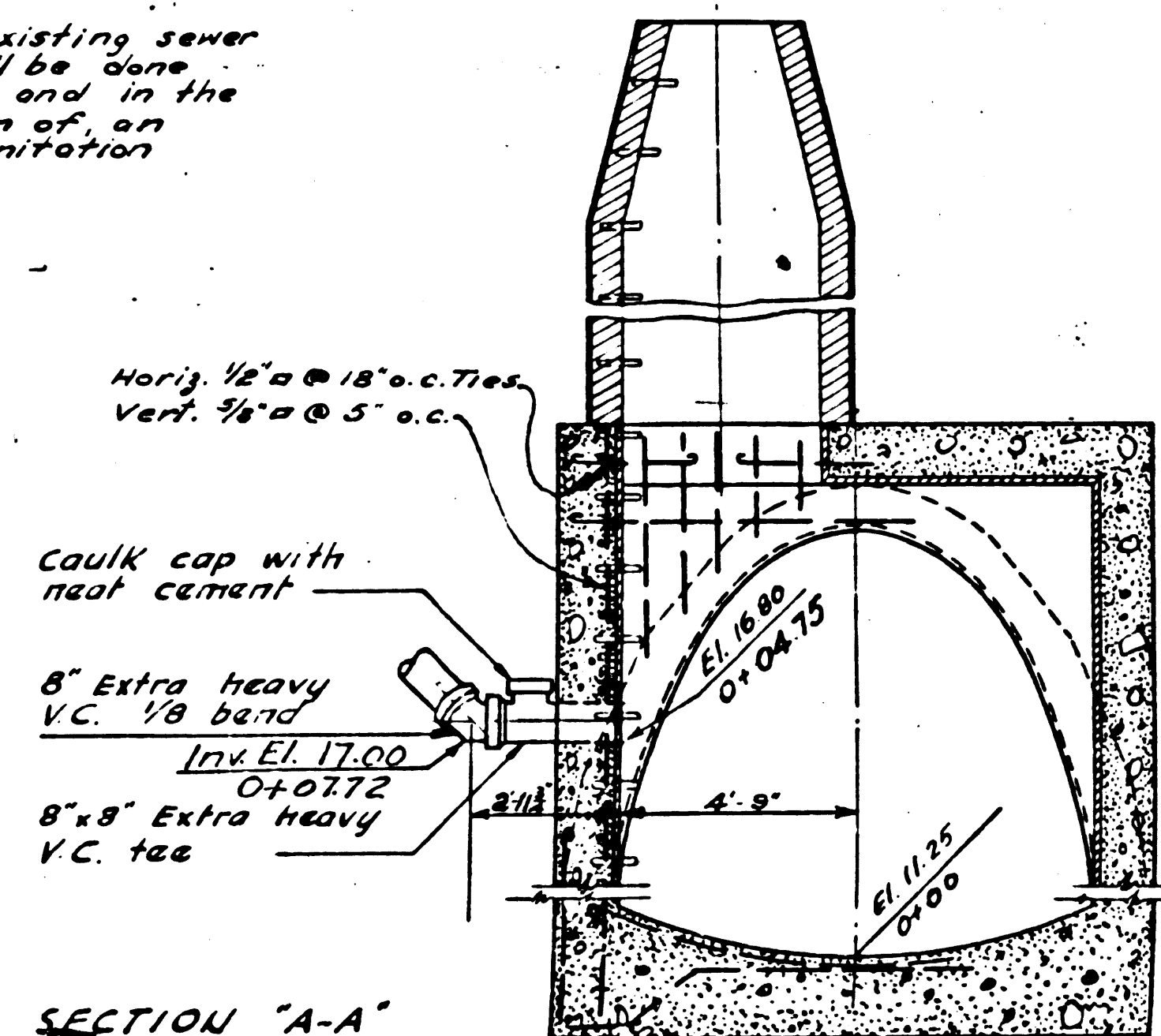
CHECKED BY *[Signature]* 7/24/80
 OFFICE OF COUNTY ENGINEER, REG. C.E. NO. 2820



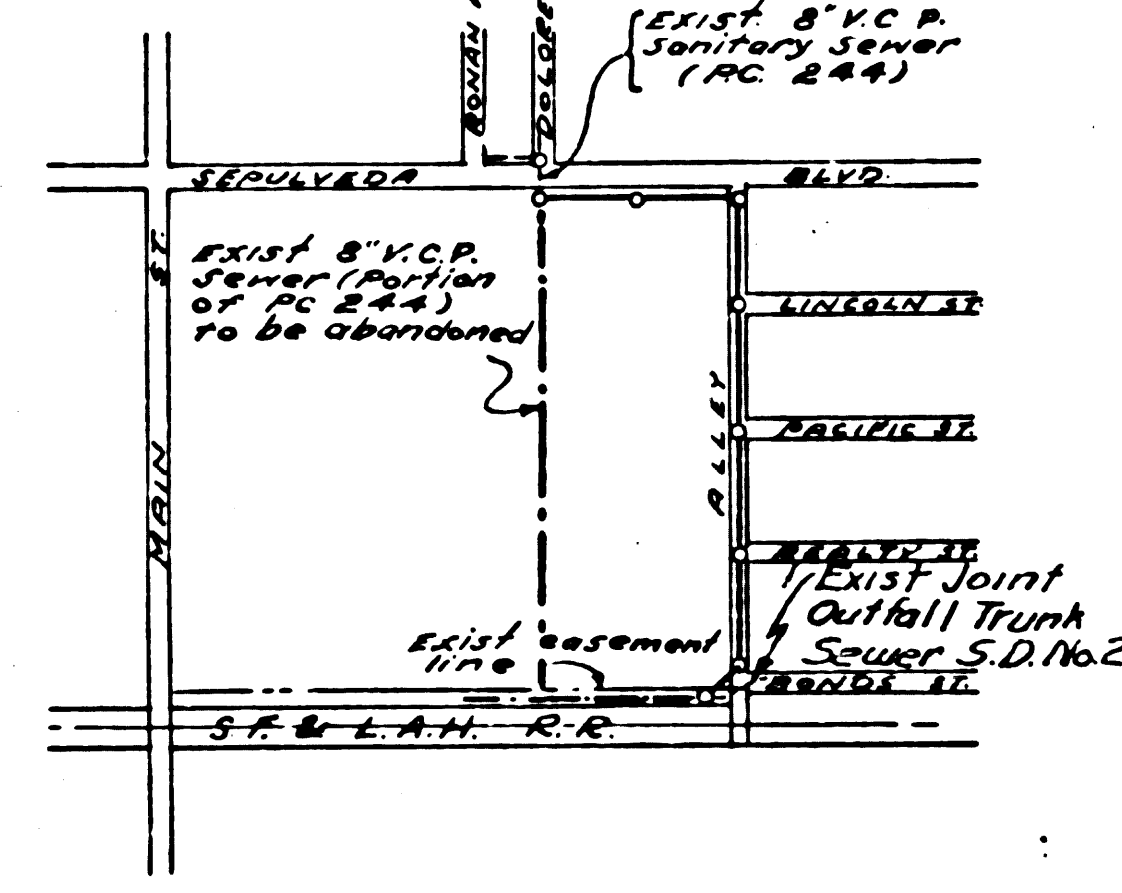
NOTE: The work of breaking into the existing sewer manhole and placing of the tee shall be done at a time of low flow in the sewer, and in the presence of, and to the satisfaction of, an authorized inspector from County Sanitation District No. 2.



DETAIL OF CONNECTION TO EXISTING SPECIAL MANHOLE AND 9'-6" SEMI-ELLIPTICAL SEWER



SECTION "A-A"

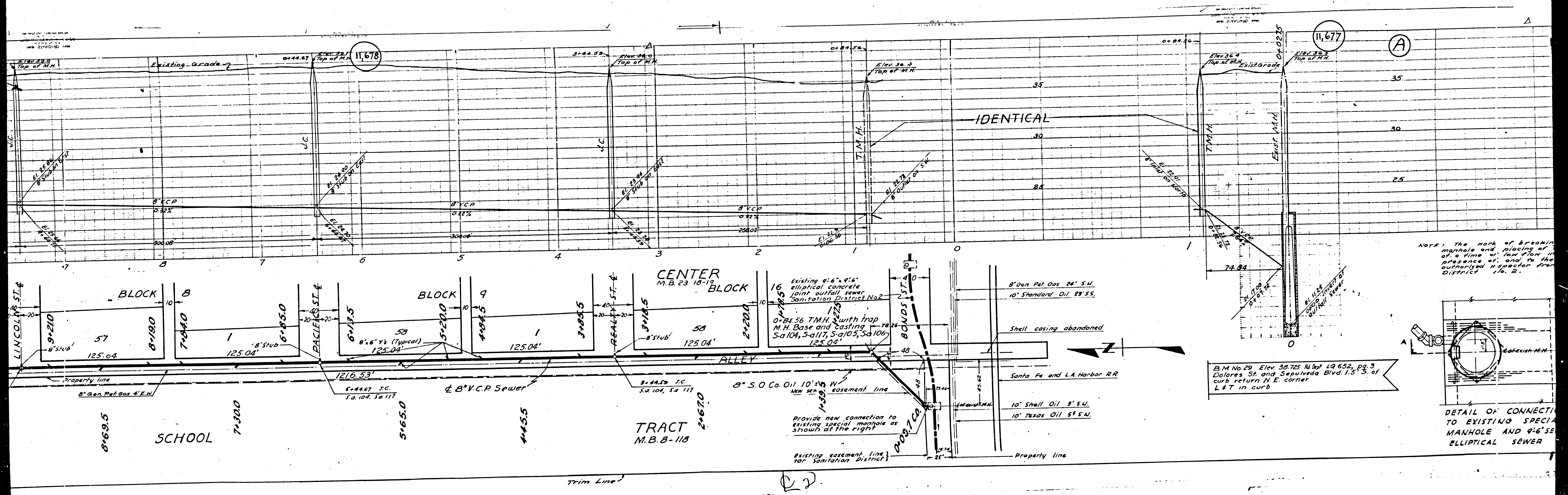


INDEX MAP
 SCALE 1" = 600'
 PC. 1433 - J.N. 3524

NOTE: GRADES TO WHICH THIS IMPROVEMENT IS TO BE CONSTRUCTED ARE SHOWN ON PLANS AND PROFILE. GRADE POINTS FOR TOP OF CURB, CENTER LINE OF STREET OR CENTER LINE OF ALLEY ARE SHOWN BY CIRCLES ON PROFILES. AT ALL POINTS BETWEEN DESIGNATED POINTS THE GRADE SHALL BE ESTABLISHED SO AS TO CONFORM TO A STRAIGHT LINE DRAWN BETWEEN SAID DESIGNATED POINTS. ELEVATIONS ARE IN FEET ABOVE U.S.C. DATUM OR MEAN SEA LEVEL. THIS DRAWING AND THE DATA HEREON ARE HEREBY MADE A PART OF THE SPECIFICATIONS. WORK SHALL BE CONSTRUCTED ACCORDING TO SPECIFICATIONS ON FILE IN THE OFFICE OF THE COUNTY ENGINEER AND SHALL BE PROSECUTED ONLY IN THE PRESENCE OF THE COUNTY ENGINEER. BEFORE WORK CAN BE STARTED, THE CONTRACTOR MUST OBTAIN A PERMIT TO EXCAVATE IN COUNTY STREETS FROM THE L.A. COUNTY ROAD DEPT., 211 So. MAIN STREET, AND MAKE A DEPOSIT WITH THE COUNTY ENGINEER, 228 L.A. COUNTY ENGINEERS BLDG., SUFFICIENT TO COVER THE COST OF CONSTRUCTION INSPECTION AND RECORD PLANS. APPROVAL OF THIS PLAN BY THE COUNTY OF LOS ANGELES DOES NOT CONSTITUTE A REPRESENTATION AS TO THE ACCURACY OF THE LOCATION OF, OR THE EXISTENCE OR NON-EXISTENCE OF, ANY UNDERGROUND UTILITY, PIPE OR STRUCTURE WITHIN THE LIMITS OF THIS PROJECT.

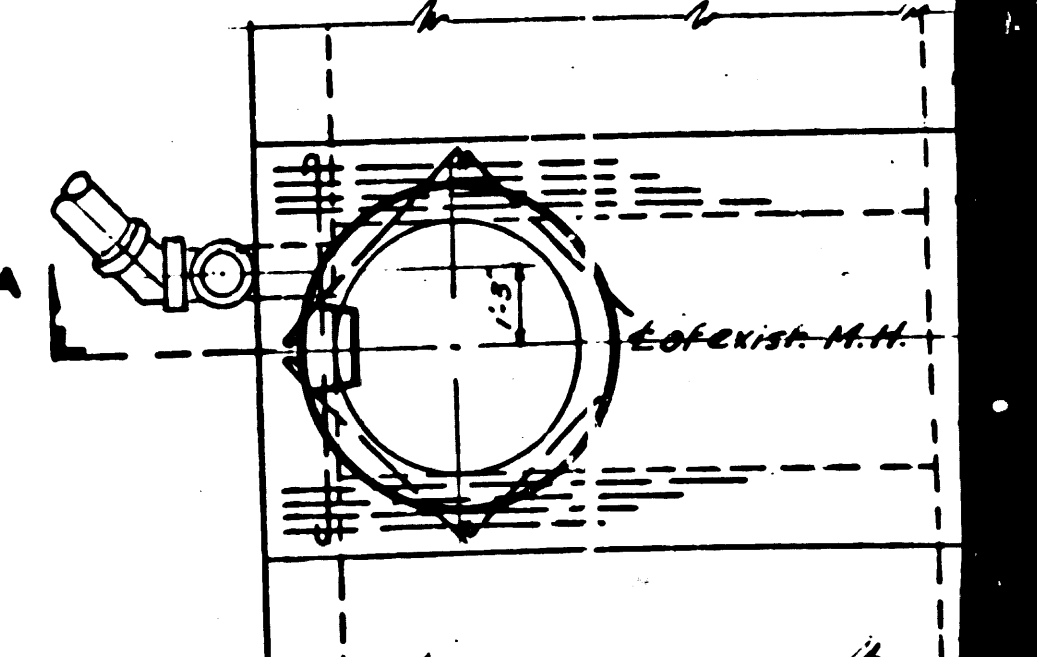
July 12-14-80 [Signature]

DESIGN - R.D. Greyson
 DRAWN - N. Aguilera
 CHECKED - C.E. Nelson



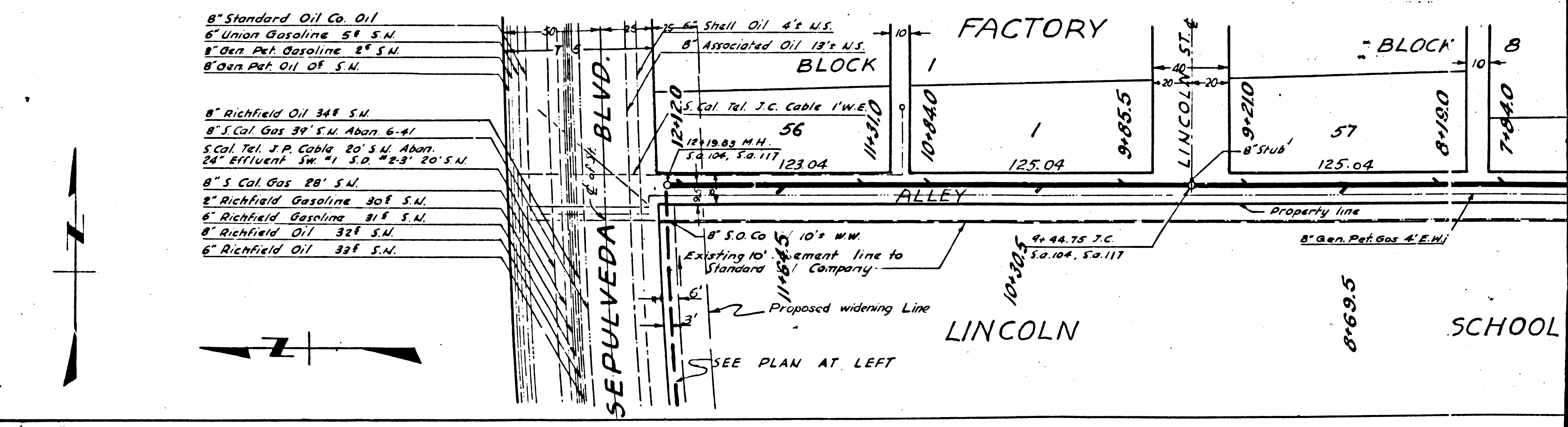
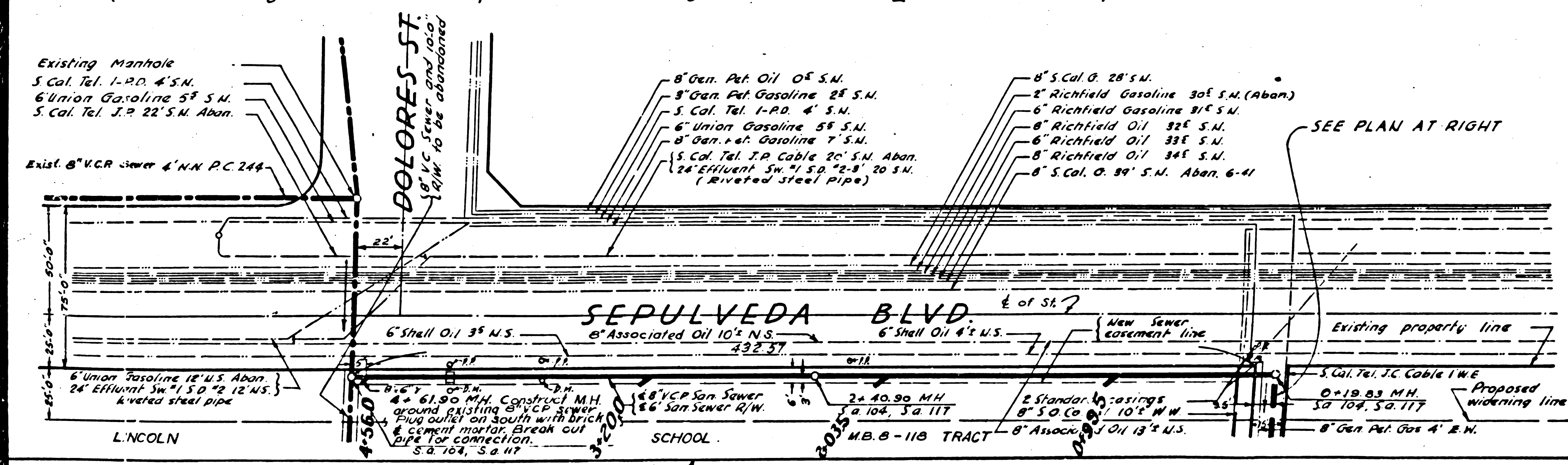
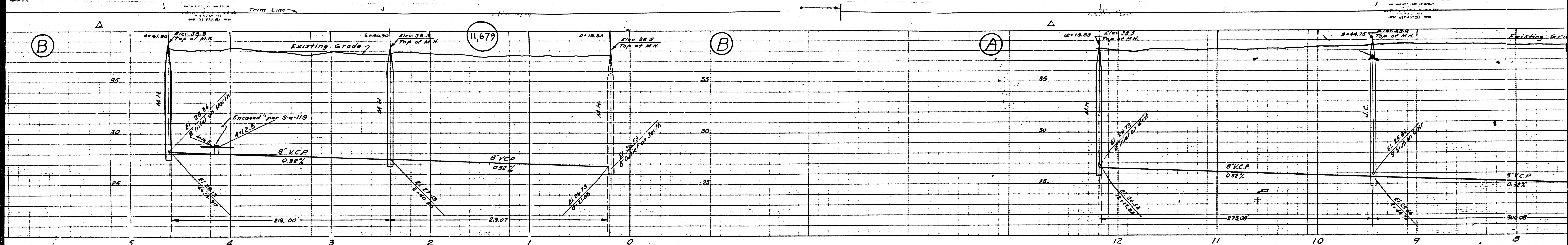
NOTE: The work of breaking manhole and placing of pipe at a time of low flow in presence of, and to the authorized inspector for District No. 2.

B.M. No. 29 Elev. 36.725 Rd. 19 652, pg. 3 Dolores St. and Sepulveda Blvd. 1.5' S. of curb return N.E. corner L & T in curb



DETAIL OF CONNECTION TO EXISTING SPECIAL MANHOLE AND 9" S.E. ELLIPTICAL SEWER

22



①