

1. USE STANDARD MANNING FRAME AND COVER 3'-6" X 1'
  2. USE STANDARD STRENGTH PIPE
  3. USE CEMENT MORTAR FOR ALL VITRIFIED CLAY PIPE JOINTS
  4. REINFORCE ALL TRENCH WITHIN PAVED AREAS TO MEET THE AIRBORNE COUNTY ROAD DEPT. REQUIREMENTS.
  5. ALL STRUCTURES SHALL BE BRICK SEWER STRUCTURES 3'-6" DIA. (A.M. BY 508-208 REV. 11/28) SPEC. IN SPEC. 40'S NORTH CONTROLING DISTRICT OF S. 21'S WEST CONTROLING DISTRICT
  6. CONSTRUCT TOP OF ALL STRUCTURES IN DIAMETER OF PIPE 6" ABOVE FINISH GRADE
  7. ENCASE FOUR FEET OF SEWER AT POINTS OF INTERFERENCE WITH POWER LINES PER G-9-11'S
- Note: No representation of the County Engineer will be made by any person if the work is done by the contractor. The owner of his authorized representative shall furnish the County Engineer with 5 copies of the drawings and specifications and 5 copies of the contract. Any change of location shall be reported in writing by the owner or his representative. No construction shall be made in these places without approval of the County Engineer.

(11,465)

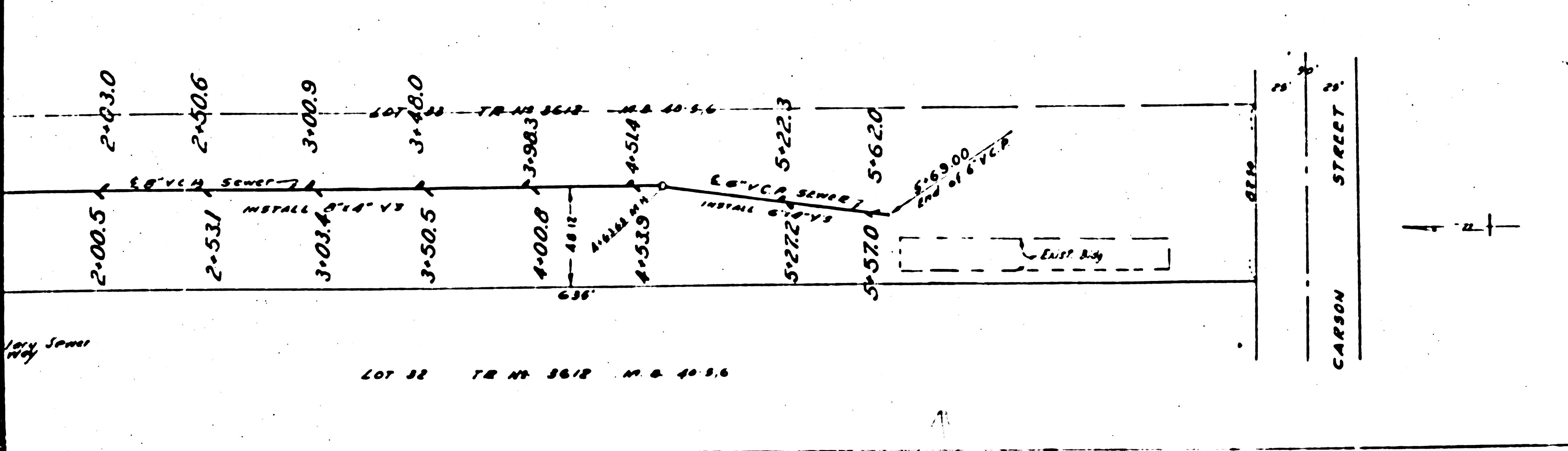
**PROFILE ALIGNMENT AND GRADE OF  
SANITARY SEWERS  
TO BE CONSTRUCTED IN  
215TH STREET  
APPROX. 600 FT. EAST OF FIGUEROA STREET  
SANITARY SEWER RIGHT OF WAY  
IN LOTS 32 AND 33 TRACT No. 3612 M.B. 40'S**

**PRIVATE CONTRACT No. 1441**  
W.S. 28  
SHEET 1 OF 1

SCALE: VERT. 1"=4'  
HORIZ. 1"=20'

JULY 19, 1958

PREPARED IN THE OFFICES OF  
**BARCLAY SURVEYING COMPANY**  
BY: *[Signature]*  
E.C.B. No. 1802



INDEX MAP  
NO SCALE

215TH STREET  
FIGUEROA ST.  
CARSON ST.

RC. 1441    JN 3532

FOR LEGEND  
300 PLAN AND 5'-0" GRADE

Grades to which this improvement is to be constructed are shown on plan and profile.

Elevations are in feet above U.S.C.S. datum or mean sea level.

This drawing and the data hereon are hereby made a part of the specifications. Work shall be constructed according to specifications on file in the office of the County Engineer and shall be prosecuted only in the presence of the County Engineer.

Before work can be started, the contractor must obtain a permit to occupy in county streets from the L.A. County Road Dept. and shall be bonded with the County Engineer, \$75,000.00 per day, sufficient to cover the cost of construction inspection and record plans.

Approval of this plan by the County of Los Angeles does not constitute a representation as to the accuracy of the location of, or the existence or non-existence of, any underground utility, pipe or structure within the limits of this project.

COUNTY OF LOS ANGELES, CALIFORNIA

APPROVED: *[Signature]*  
COUNTY ENGINEER

APPROVED: *[Signature]*  
ACTING COUNTY ENGINEER

CHECKED BY: *[Signature]*  
OFFICE OF COUNTY ENGINEER  
E.C.B. 1960

DATED: 11-8-58

