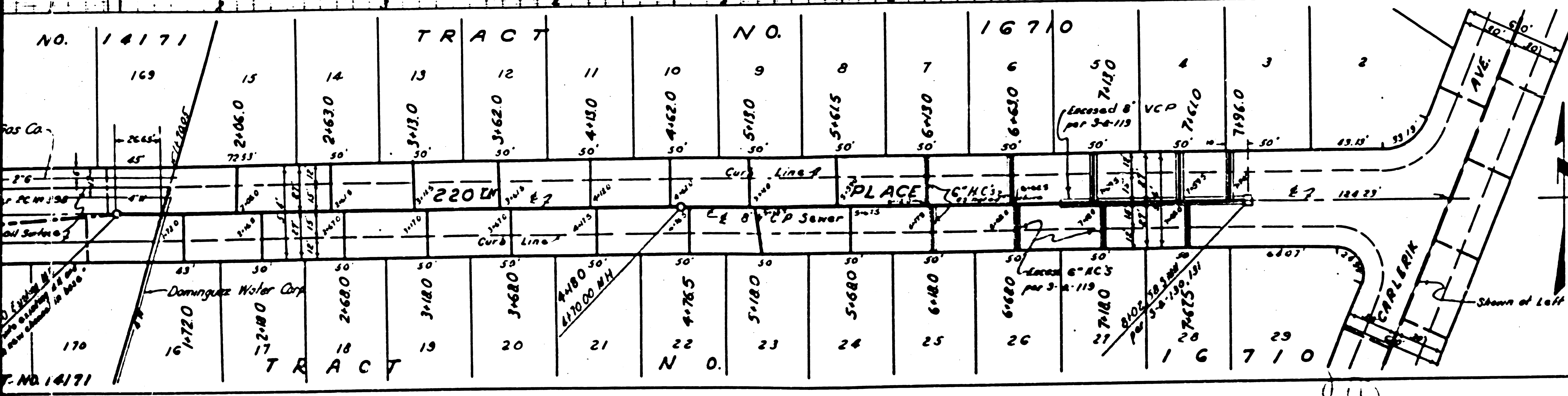


LENNOX
PROFILES, ALIGNMENT AND GRADE OF SANITARY SEWERS TO BE CONSTRUCTED IN 220TH PLACE BETWEEN EVONDA AVE AND CARLERIK AVE AND CARLERIK AVENUE BETWEEN 220TH AND A PART OF TRACT 16710 IN TRACT 16710, L.A.
PRIVATE CONTRACT NO. 1588
W.S. 30
SHEET 1 OF 1 SHEET
 PREPARED IN THE OFFICES OF
H.D. LITTLE

REVISIONS:
 (1) USE STANDARD MANHOLE FRAMES AND COVERS 18" x 18" EXCEPT AS NOTED.
 (2) USE STANDARD STRENGTH PIPE.
 (3) USE CEMENT MORTAR FOR ALL JOINTS.
 (4) RECONSTRUCT ALL EXISTING SEWERS WITHIN PROPERTY LINES OF TRACTS 16710 AND 16711 TO CONFORM WITH THE SPECIFICATIONS OF THE COUNTY ENGINEER.
 (5) CORRECTLY SHOW ALL CONNECTIONS TO EXISTING SEWERS.
 (6) SHOW ALL STRUCTURES, MANHOLES, AND STRUCTURES TO BE CONSTRUCTED.
 (7) SHOW THE GRADE OF THE SEWER PIPE AND THE GRADE OF THE GROUND.
 (8) SHOW THE GRADE OF THE SEWER PIPE AND THE GRADE OF THE GROUND.
 (9) SHOW THE GRADE OF THE SEWER PIPE AND THE GRADE OF THE GROUND.
 (10) SHOW THE GRADE OF THE SEWER PIPE AND THE GRADE OF THE GROUND.



(10) FOR CHANGE IN LEAKAGE TEST SEE SPEC'S. SEC. 4.9.
 (11) UNLESS OTHERWISE NOTED, WESTINGHOUSE GASKETS AND FORMS SHALL BE USED, PER S.A. 51, IN MANHOLE LIDS AND HOUSE CONNECTIONS.
 (12) INSTALL WIRE AND TAPS ON ALL CONNECTIONS AND WYES PER SPEC'S. SEC. 4.8.

INDEX MAP
 Scale 1" = 600'
 J.N. 5523

RECEIVED
 NOV 14 1952
 L.A. COUNTY ENGINEER
 SANITATION DIVISION

BY: *E.D. DeLoach*
 REG. C.E. NO. 4716

FOR LEGEND
 SEE PLAN NO. 9-0-66

NOTE:
 GRADES TO WHICH THIS IMPROVEMENT IS TO BE CONSTRUCTED ARE SHOWN ON CLASS OF 3' PROFILE SHEET PRINTS FOR TOP OF GROUND, CENTER LINE OF STREET OR CENTER LINE OF RAILWAY AND SHOWN BY CIRCLES ON PROFILES. AT ALL POINTS BETWEEN DESIGNATED POINTS THE GRADE SHALL BE INTERPOLATED SO AS TO CONFORM TO A STANDARD LAW GRADE OR TO THE SHOWN DESIGNATED POINTS.
 ELEVATIONS ARE IN FEET ABOVE MEAN SEA LEVEL.
 THIS DRAWING AND THE DATA HEREON ARE HEREBY MADE A PART OF THE CONTRACTOR'S OBLIGATION. THE CONTRACTOR SHALL BE RESPONSIBLE FOR THE ACCURACY OF THE DATA HEREON AND SHALL BE RESPONSIBLE FOR THE ACCURACY OF THE DATA HEREON AND SHALL BE RESPONSIBLE FOR THE ACCURACY OF THE DATA HEREON.
 COUNTY ENGINEER AND SEAL BE SUBMITTED ONLY IN THE PRESENCE OF THE COUNTY ENGINEER. BEFORE WORK CAN BE STARTED, THE CONTRACTOR MUST OBTAIN A LICENSE TO THE POINTS IN COUNTY STATUTE FROM THE L.A. COUNTY ROAD DEPT. OR SO MANY OTHERS AND MAKE A DEPOSIT WITH THE COUNTY ENGINEER, 630 L.A. COUNTY ENGINEERING BLDG., SUFFICIENT TO COVER THE COST OF CONSTRUCTION INSPECTION AND RECORD PLANS AND APPROVAL. AS THE PLAN BY THE COUNTY OF LOS ANGELES DOES NOT CONSTITUTE A GUARANTEE AS TO THE ACCURACY OF THE LOCATION OR OF THE DISTANCE OR OF THE EXISTENCE OF ANY UNDERGROUND UTILITY, PIPE OR STRUCTURE WITHIN THE LIMITS OF THIS PROJECT.

COUNTY OF LOS ANGELES, CALIFORNIA.
 WILLIAM J. FOX, COUNTY ENGINEER
 APPROVED: *E.W. Fox*
 APPROVED: *[Signature]*
 CHECKED BY: *[Signature]*

