

BM Elev 140.585, BY DIST. B.A. 127 P. 3  
 Government Blvd. & Slauson Ave. S.W. Cor.  
 Cut spot in Man. 18' deep, 47' W. of E. Retained  
 and 30' So. E. of Slauson (1911)

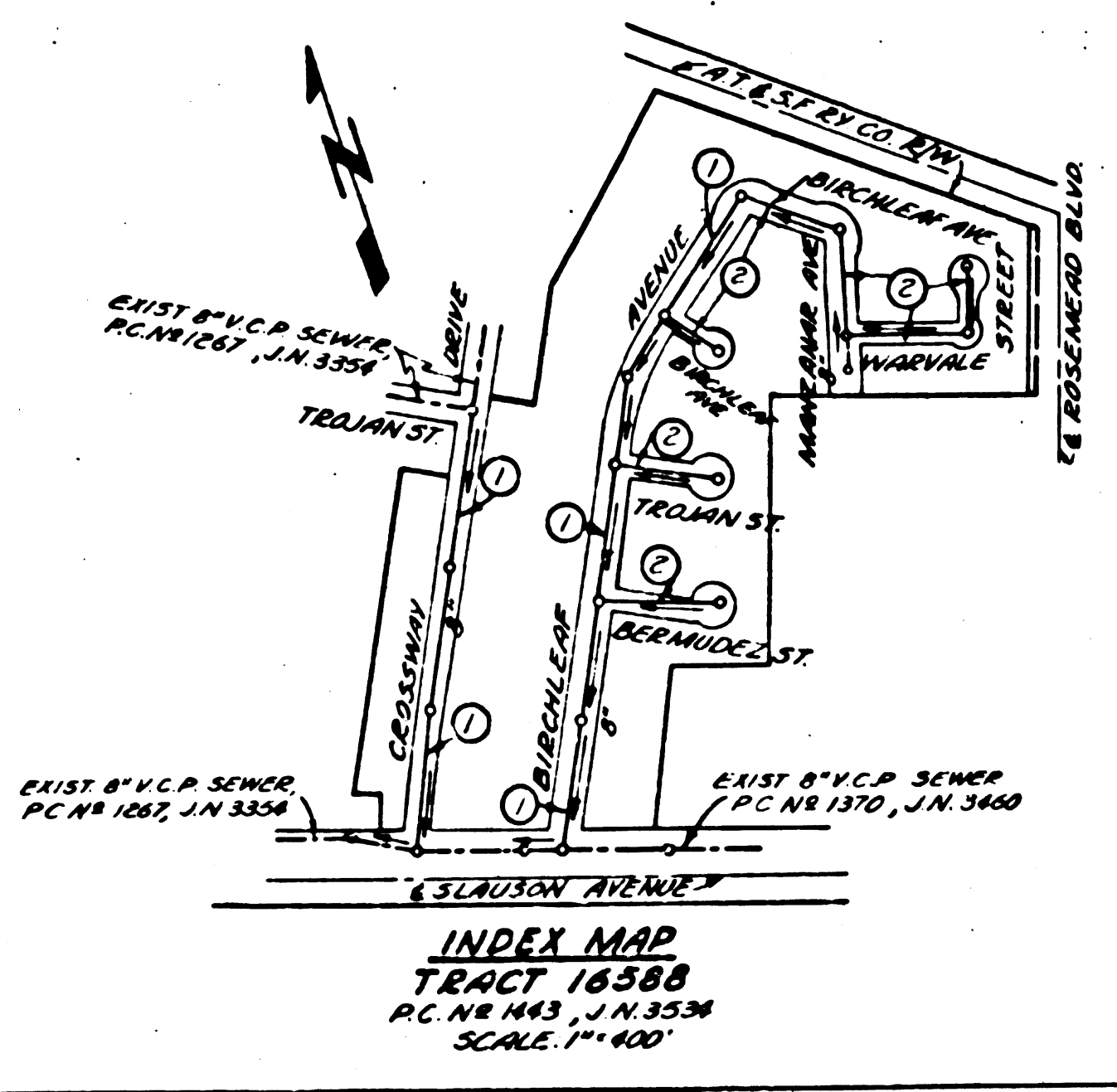
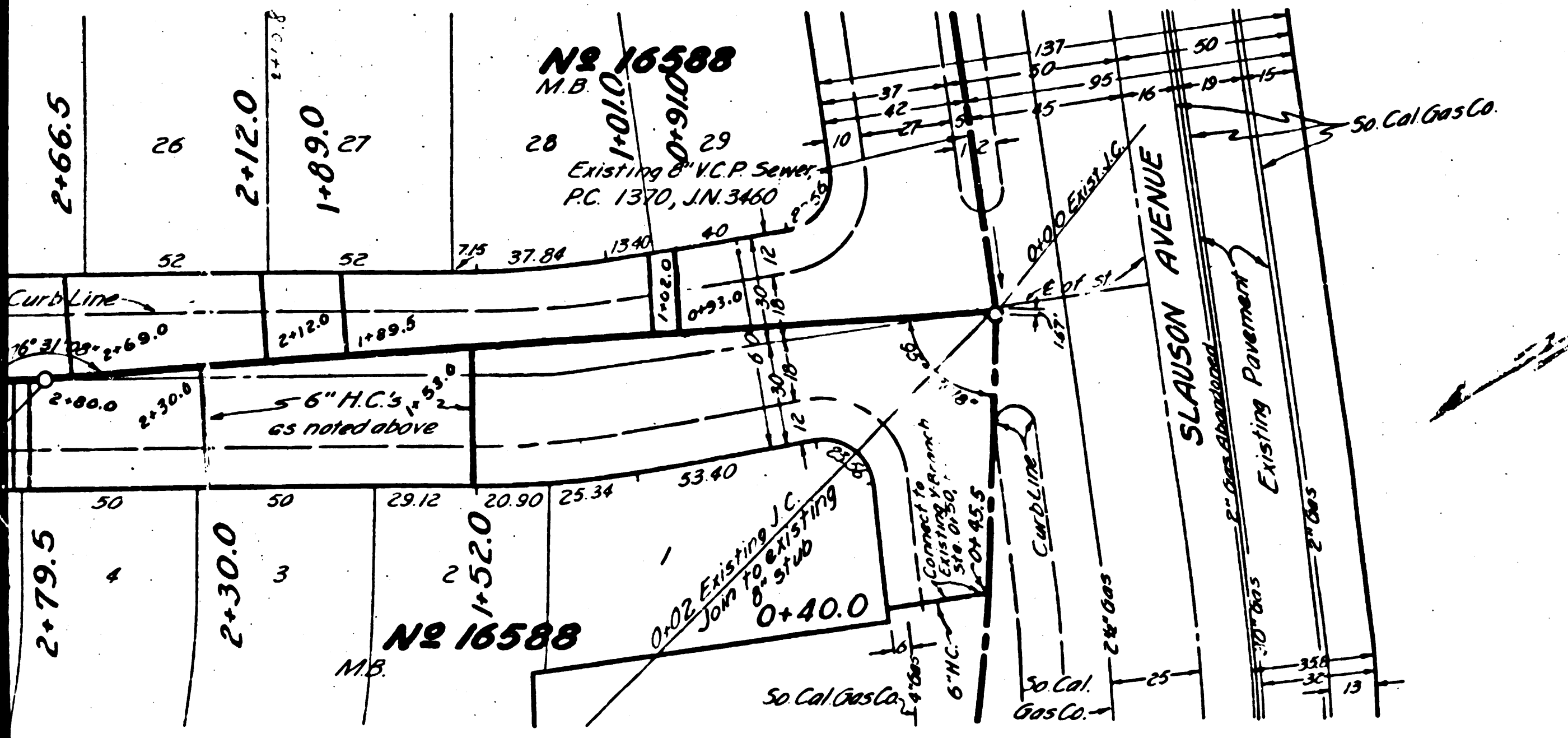
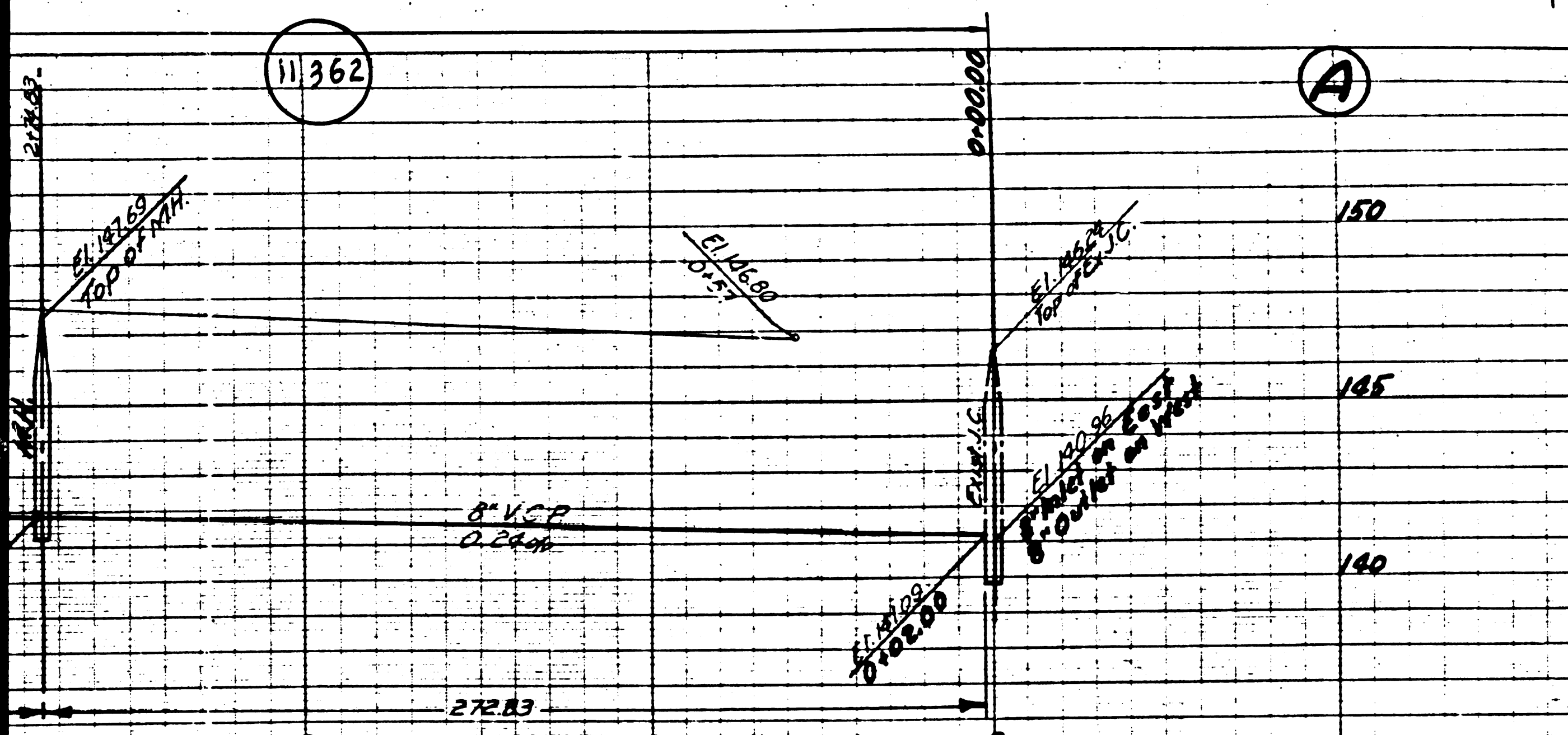
- NOTE:  
 NO REPRESENTATIVE OF THE COUNTY ENGINEER WILL SURVEY OR LAY OUT ANY PORTION OF THE WORK.  
 THE OWNER OR HIS AUTHORIZED REPRESENTATIVE SHALL FURNISH THE COUNTY ENGINEER WITH GRADE SHEETS AND STATIONS FOR ALL HOUSE CONNECTIONS AND Y BRANCHES AND SHALL PROVIDE STAKES FOR THEM AT THESE PROPER LOCATIONS WITH STATIONING FAIRLY MARKED. ANY CHANGE OF LOCATION SHALL BE REQUESTED IN WRITING BY THE OWNER OR HIS REPRESENTATIVE.  
 NO REVISIONS SHALL BE MADE IN THESE PLANS WITHOUT APPROVAL OF THE COUNTY ENGINEER.
1. USE STANDARD MANHOLE FRAMES AND COVERS, S=1117.
  2. USE STANDARD STRENGTH PIPE EXCEPT AS NOTED.
  3. USE CEMENT MORTAR FOR ALL VITRIFIED CLAY PIPE JOINTS.
  4. RESURFACE ALL TRENCH WITHIN PAVED AREA TO MEET L. A. COUNTY ROAD DEPT. REQUIREMENTS (IN ACCORDANCE WITH LOCALITY).
  5. ENCASE FOUR FEET OF SEWER AT POINTS OF INTERFERENCE WITH POLES, S=1119.
  6. HOUSE CONNECTIONS TO BE CONSTRUCTED WITH INVERT AT PROPERTY LINE 5 FEET BELOW CURB GRADE.
  7. ALL STRUCTURES SHALL BE BRICK SEWER STRUCTURES, S=104.
  8. PROVIDE STAKES ON THE PROPERTY LINES OR PROPERTY LINES PRODUCE AT RIGHT ANGLES TO THE SEWER LINE AT THE CURB LINE OF EACH MANHOLE.

PROFILE, ALIGNMENT AND GRADE OF  
**SANITARY SEWERS**  
 TO BE CONSTRUCTED IN  
**CROSSWAY DRIVE**  
 BETWEEN SLAUSON AVE. & TORLAW ST.  
**BIRCHLEAF AVENUE**  
 BETWEEN SLAUSON AVE. & 1830.56 FT NORTH OF SLAUSON AVE.  
 BETWEEN BIRCHLEAF AVE. & EAST TRACT BOUNDARY  
 IN TRACT NO. 16588

PRIVATE CONTRACT NO. 1443  
 W. S. 34  
 SHEET 1 OF 2 SHEETS  
 AUG. 1950  
 PREPARED IN THE OFFICES OF  
**ENGINEERING SERVICE CORPORATION**

BY *E. F. Young*  
 REGISTERED PROFESSIONAL ENGINEER  
 186 C. E. 100 WY  
 SEP 29 1950  
 S.E.P. 100 WY

POP LEGEND  
 SEE PLAN NO. S-4-44



ENGINEERING SERVICE CORPORATION			
1127 W. WASHINGTON BLVD.		PR. 7281	
LOS ANGELES 15 CALIF.			
REVISIONS	TRACED BY	SL	
	DES'D BY	SL	
	CK'D BY	R.W.F.	
	SUBMITTED BY	M. Philley	
SUB STRUCTURES CK'D			
W. D. NO.	DATE	SCALE	L. B. F. B.
0043-1	AUG 10, 1950	VERT. 1"=4'	6.50

NOTE:  
 GRADES TO WHICH THIS IMPROVEMENT IS TO BE CONSTRUCTED ARE SHOWN ON PLANS AND PROFILES. GRADE POINTS FOR TOP OF CURB, CENTER LINE OF STREETS, OR CENTER LINE OF ALLEYS ARE SHOWN BY CIRCLES ON PROFILES. AT ALL POINTS BETWEEN DESIGNATED POINTS THE GRADE SHALL BE ESTABLISHED SO AS TO CONFORM TO A STRAIGHT LINE DRAWN BETWEEN SAID DESIGNATED POINTS.  
 ELEVATIONS ARE IN FEET ABOVE U. S. G. S. DATUM OR MEAN SEA LEVEL.  
 THIS DRAWING AND THE DATA HEREON ARE HEREBY MADE A PART OF THE SPECIFICATIONS.  
 WORK SHALL BE CONSTRUCTED ACCORDING TO SPECIFICATIONS ON FILE IN THE OFFICE OF THE COUNTY ENGINEER AND SHALL BE PROSECUTED ONLY IN THE PRESENCE OF THE COUNTY ENGINEER.  
 BEFORE WORK CAN BE STARTED THE CONTRACTOR MUST OBTAIN A PERMIT TO EXCAVATE IN COUNTY STREETS FROM THE L. A. COUNTY ROAD DEPT. 211 SO. MAIN ST. AND MAKE A DEPOSIT WITH THE COUNTY ENGINEER, 818 COUNTY ENGINEERING BUILDING SUFFICIENT TO COVER THE COST OF CONSTRUCTION INSPECTION AND RECORD PLANS.  
 APPROVAL OF THIS PLAN BY THE COUNTY OF LOS ANGELES DOES NOT CONSTITUTE A REPRESENTATION AS TO THE ACCURACY OF THE LOCATION OR OF THE EXISTENCE OR NON-EXISTENCE OF ANY UNDERGROUND UTILITY, PIPE, OR STRUCTURE WITHIN THE LIMITS OF THIS PROJECT. THIS NOTE APPLIES TO ALL SHEETS.  
 COUNTY OF LOS ANGELES, CALIFORNIA

APPROVED: *[Signature]*  
 COUNTY ENGINEER

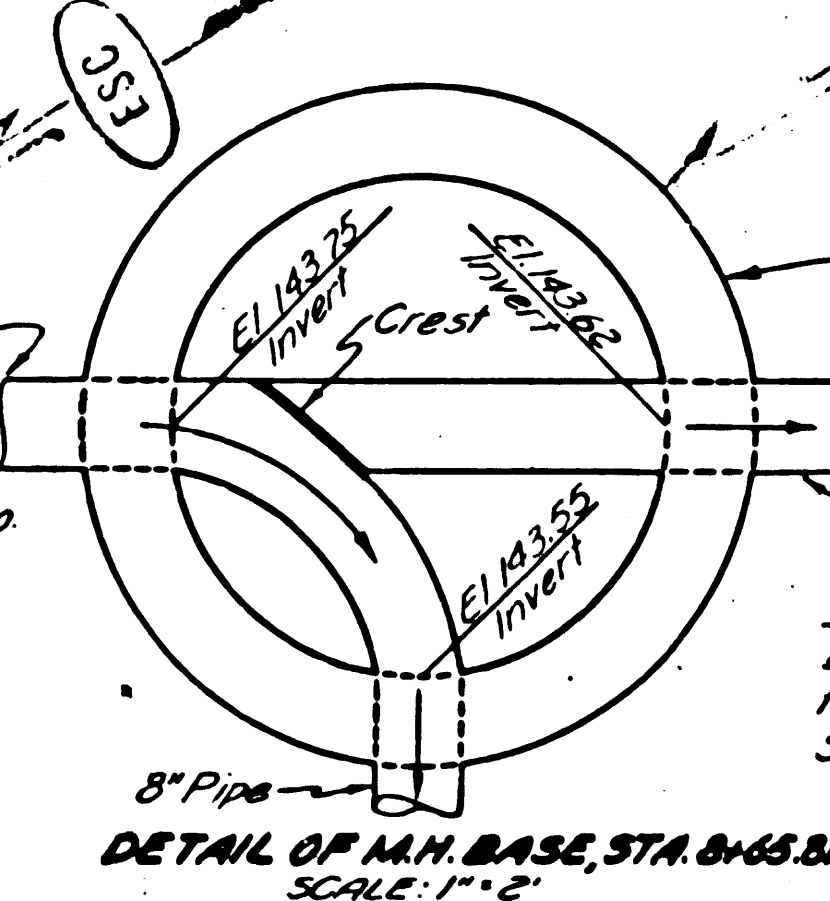
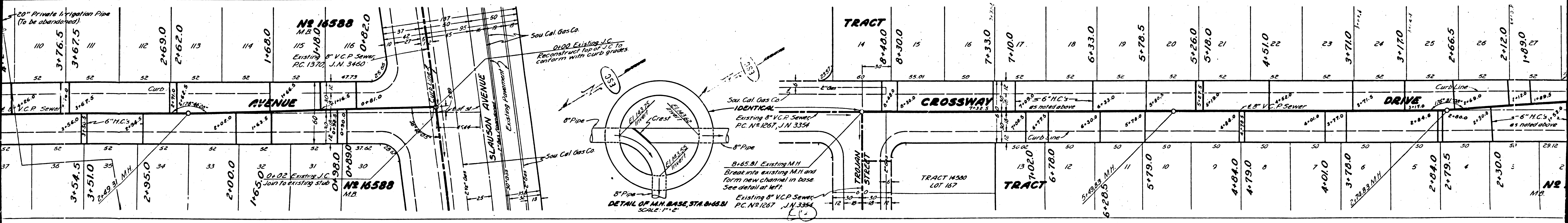
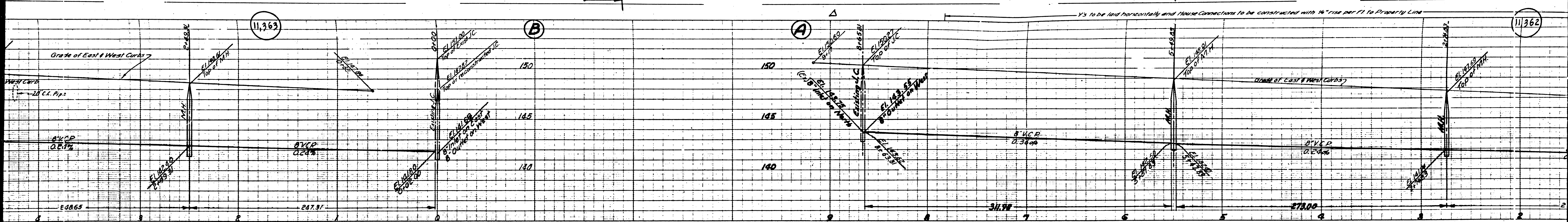
APPROVED: *[Signature]*  
 FOR CHIEF ENGINEER OF COUNTY  
 SANITATION DISTRICT NO. 2

CHECKED: *[Signature]*  
 OFFICE OF COUNTY ENGINEER, REG. C. E. NO. 7522

11/21/50

SLAUSON AVE.  
 BIRCHLEAF AVE.  
 CROSSWAY DR.  
 TRACT NO. 16588



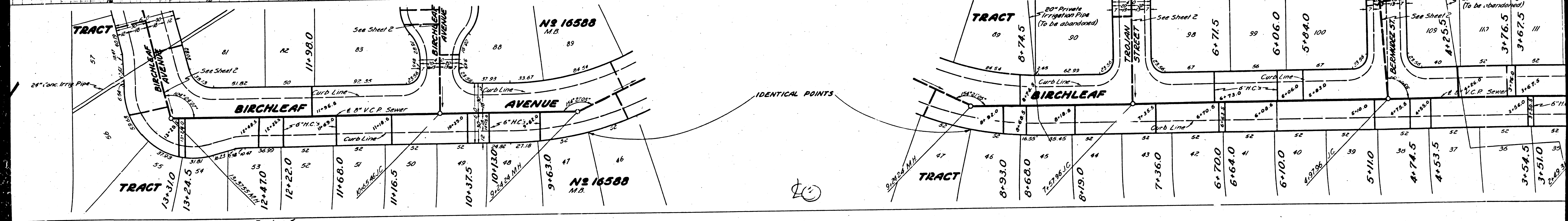
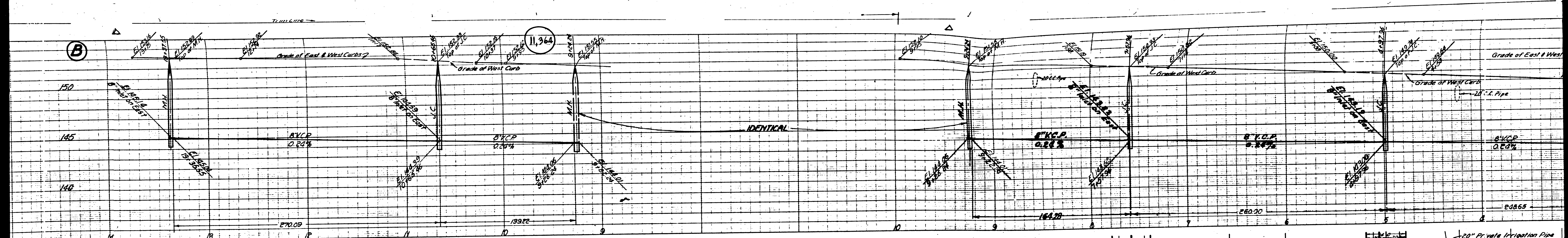


8" Pipe  
 Crest  
 8" Pipe  
 8" Pipe  
 8" Pipe

DETAIL OF M.H. BASE, STR. 04521  
 SCALE: 1"=2'

*Y's to be laid horizontally and House Connections to be constructed with 1/4" rise per ft. to Property Line*

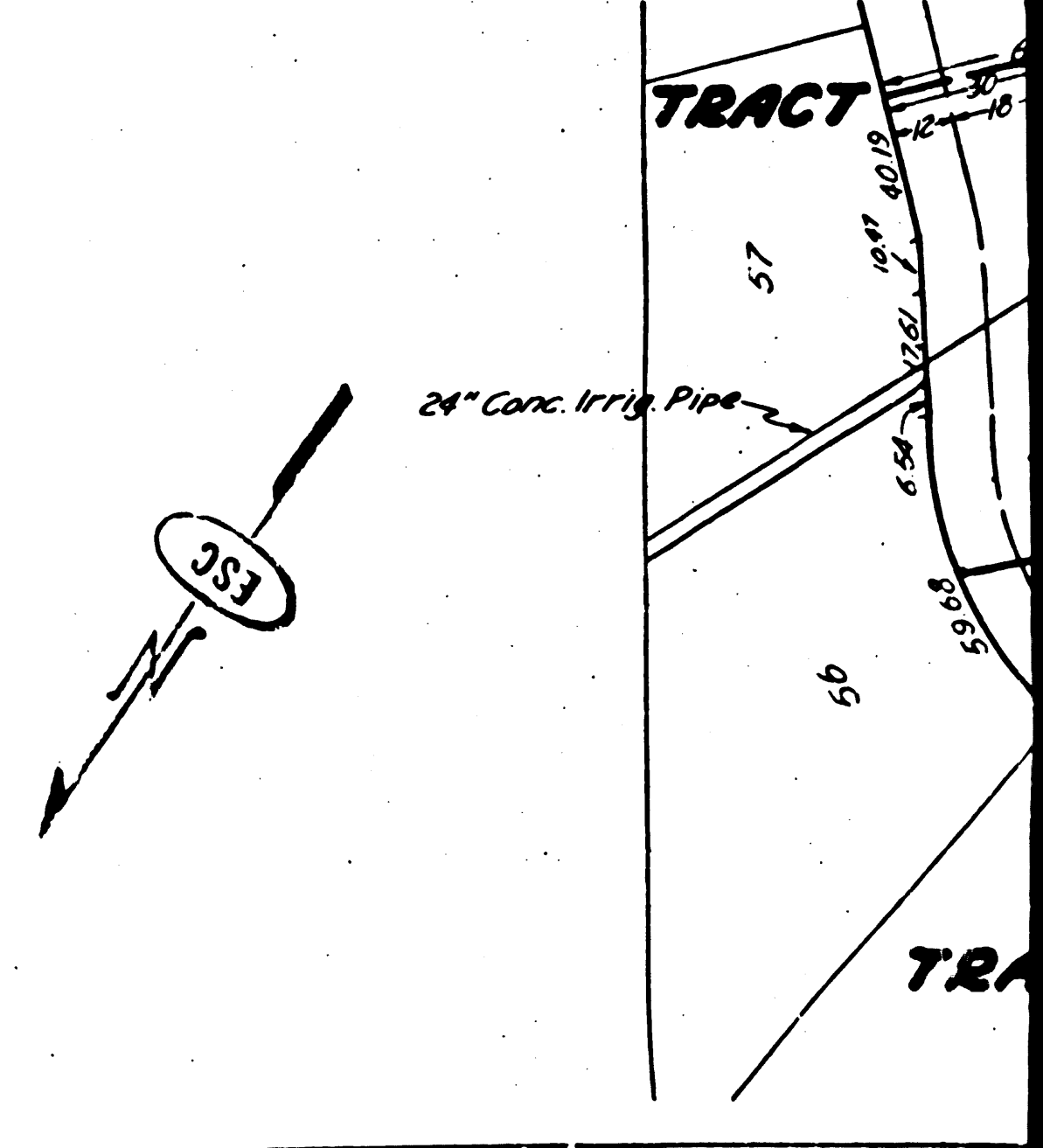
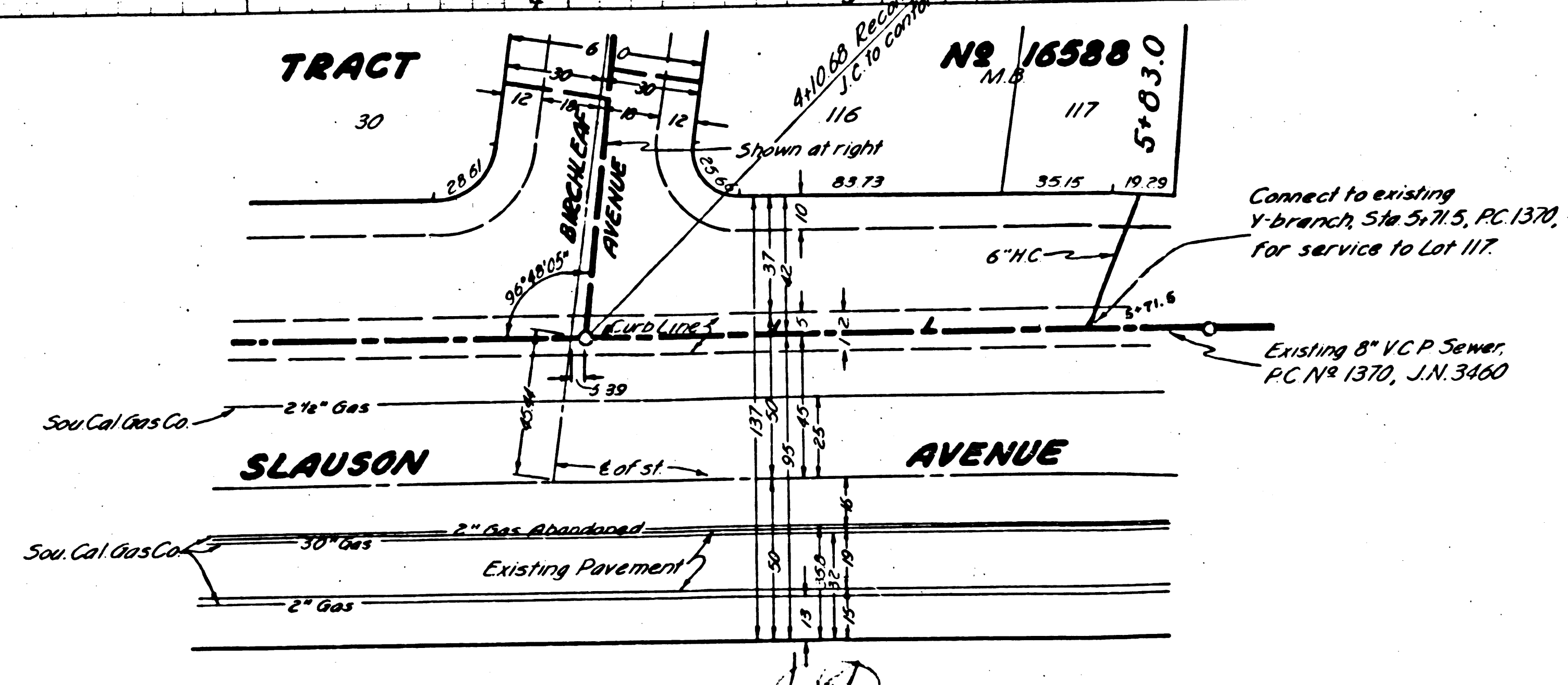
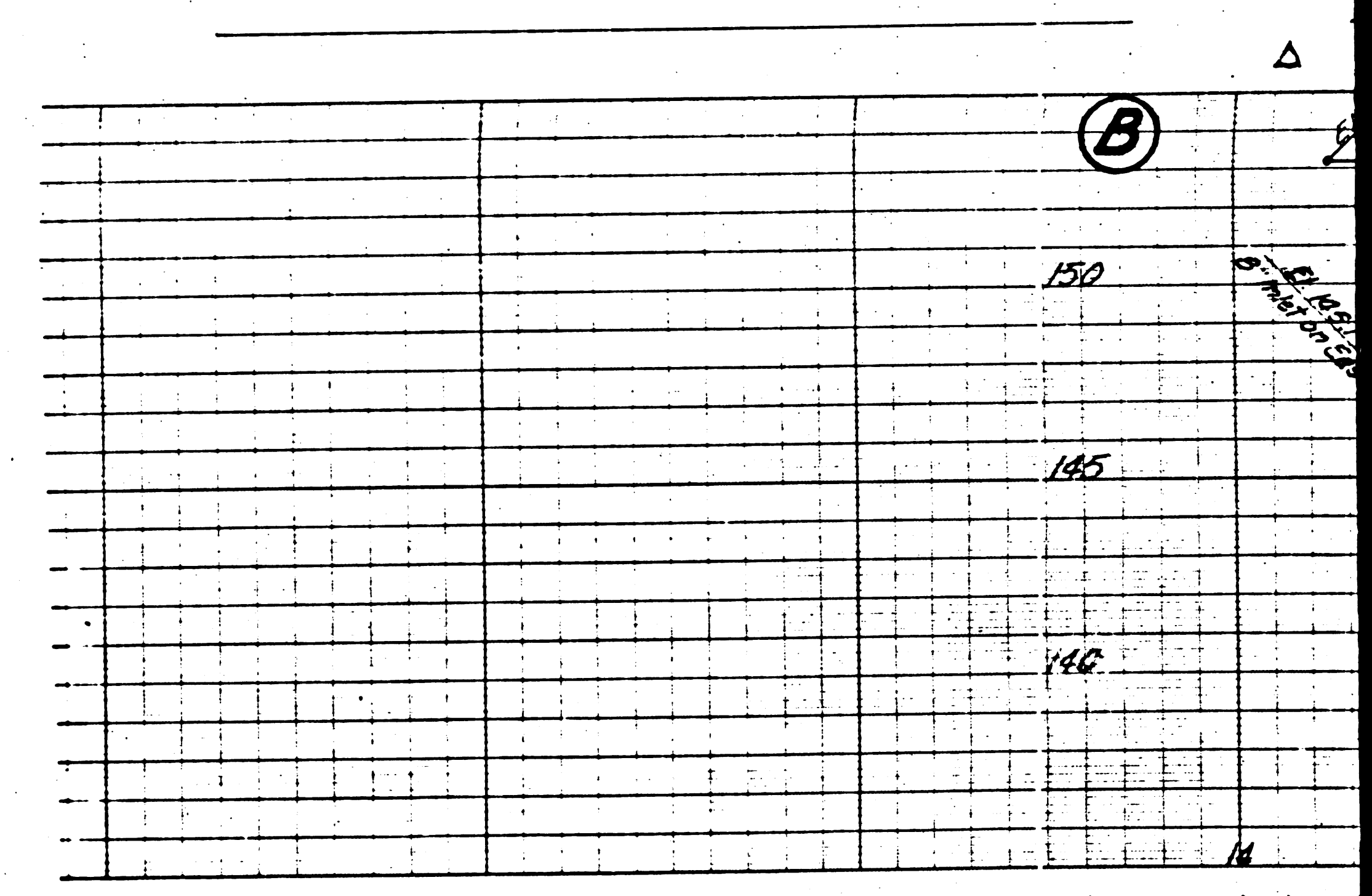
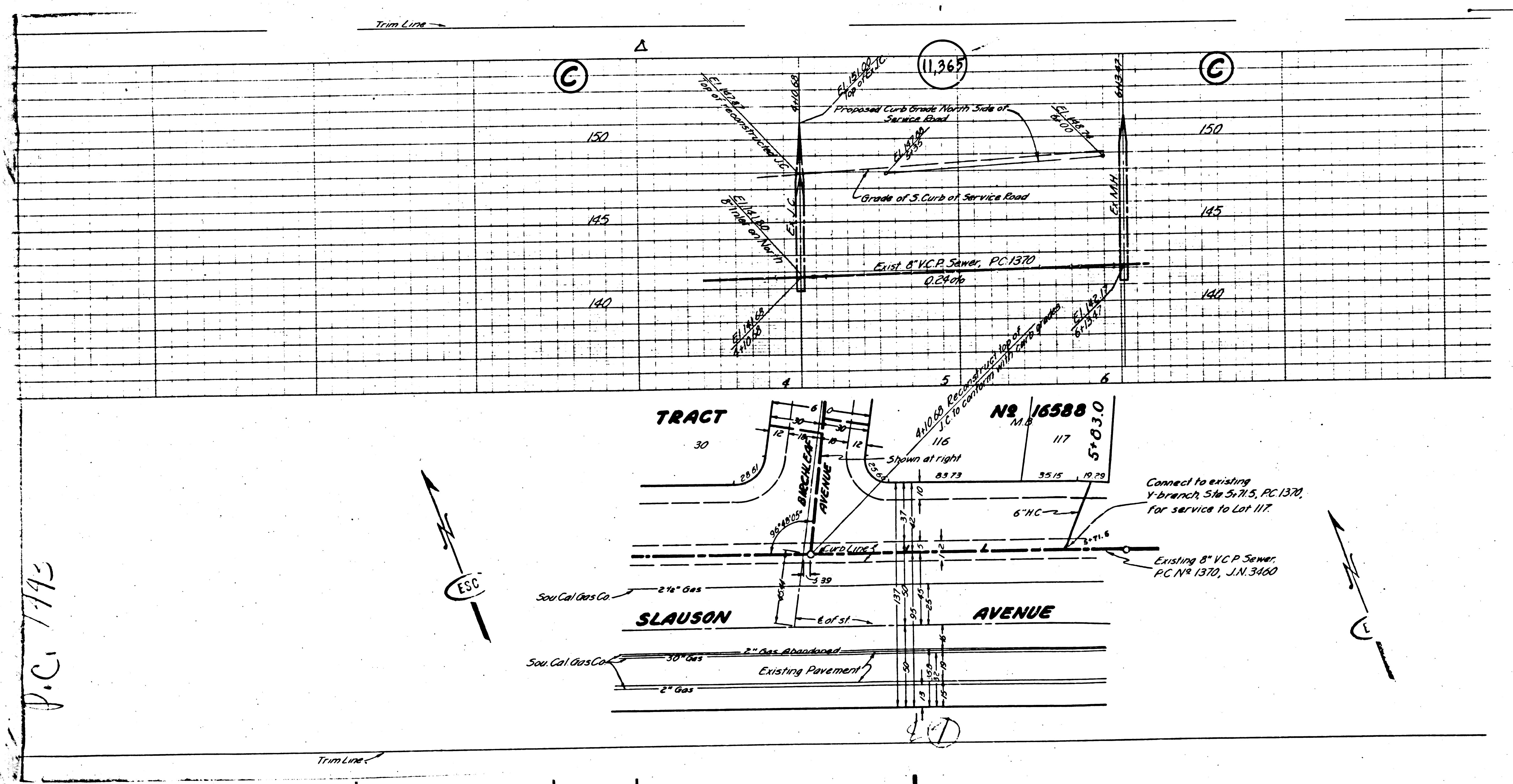




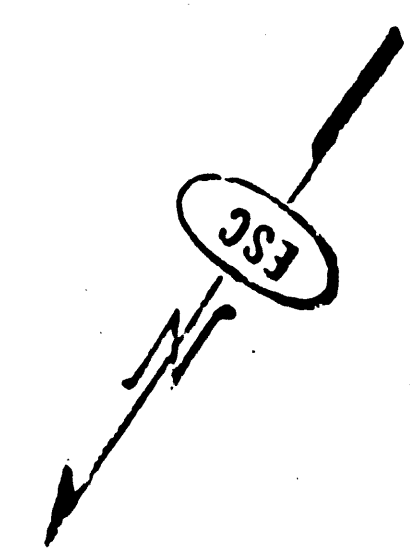
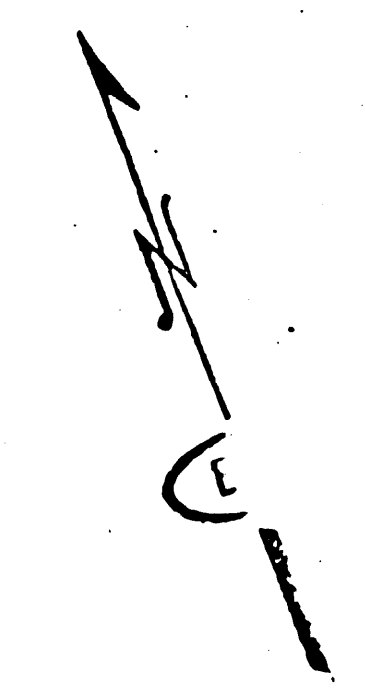
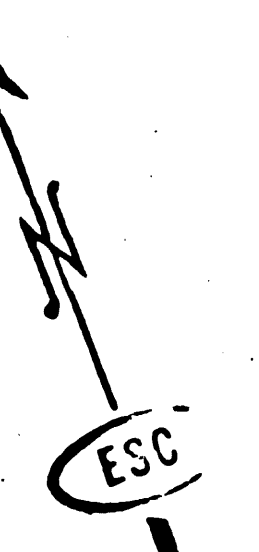
IDENTICAL POINTS

20

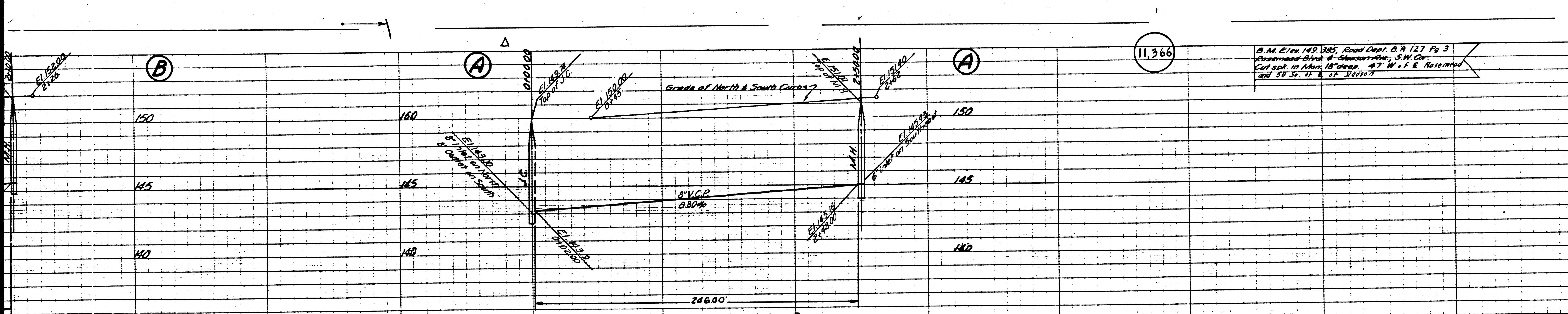




P.C. 1145







11,966

B.M. Elev. 149.985, Road Dept. B.P. 127 Pg. 3  
 Rosemead Blvd. & Glendale Ave., S.W. Co.  
 Cont. Exp. in Map. 18' Group, 47' W & E. Resurveyed  
 on 27-31-11 & 27-31-107

PROFILES, ALTERNATIVE AND GRADES OF  
**SANITARY SEWERS**  
 TO BE CONSTRUCTED IN  
**BERMUDEZ STREET** (2)

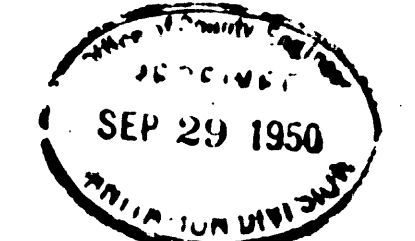
BETWEEN BIRCHLEAF AVE. & 250 FT. EAST OF BIRCHLEAF AVE.  
**TROJAN STREET**  
 BETWEEN BIRCHLEAF AVE. & 250 FT. EAST OF BIRCHLEAF AVE.  
**BIRCHLEAF AVENUE**  
 BETWEEN BIRCHLEAF AVE. & 100 FT. EAST OF BIRCHLEAF AVE.  
**BIRCHLEAF AVENUE**  
 BETWEEN BIRCHLEAF AVE. & MANDANAR AVENUE  
**MANDANAR AVENUE**  
 BETWEEN BIRCHLEAF AVE. & SOUTH TRACT BOUNDARY  
**WARVALE STREET**  
 BETWEEN MANDANAR AVE. & 248.15 FT. EAST OF MANDANAR AVE.  
**WARVALE STREET**  
 BETWEEN WARVALE ST. & 100 FT. NORTH OF WARVALE ST.  
 IN TRACT NS 16588

PRIVATE CONTRACT NO. 1443  
 W. S. 36  
**SHEET 2 OF 3 SHEETS**  
 SCALE: VERT. 1" = 4'  
 HOR. 1" = 40' AUG. 1950

PREPARED IN THE OFFICES OF  
**ENGINEERING SERVICE CORPORATION**

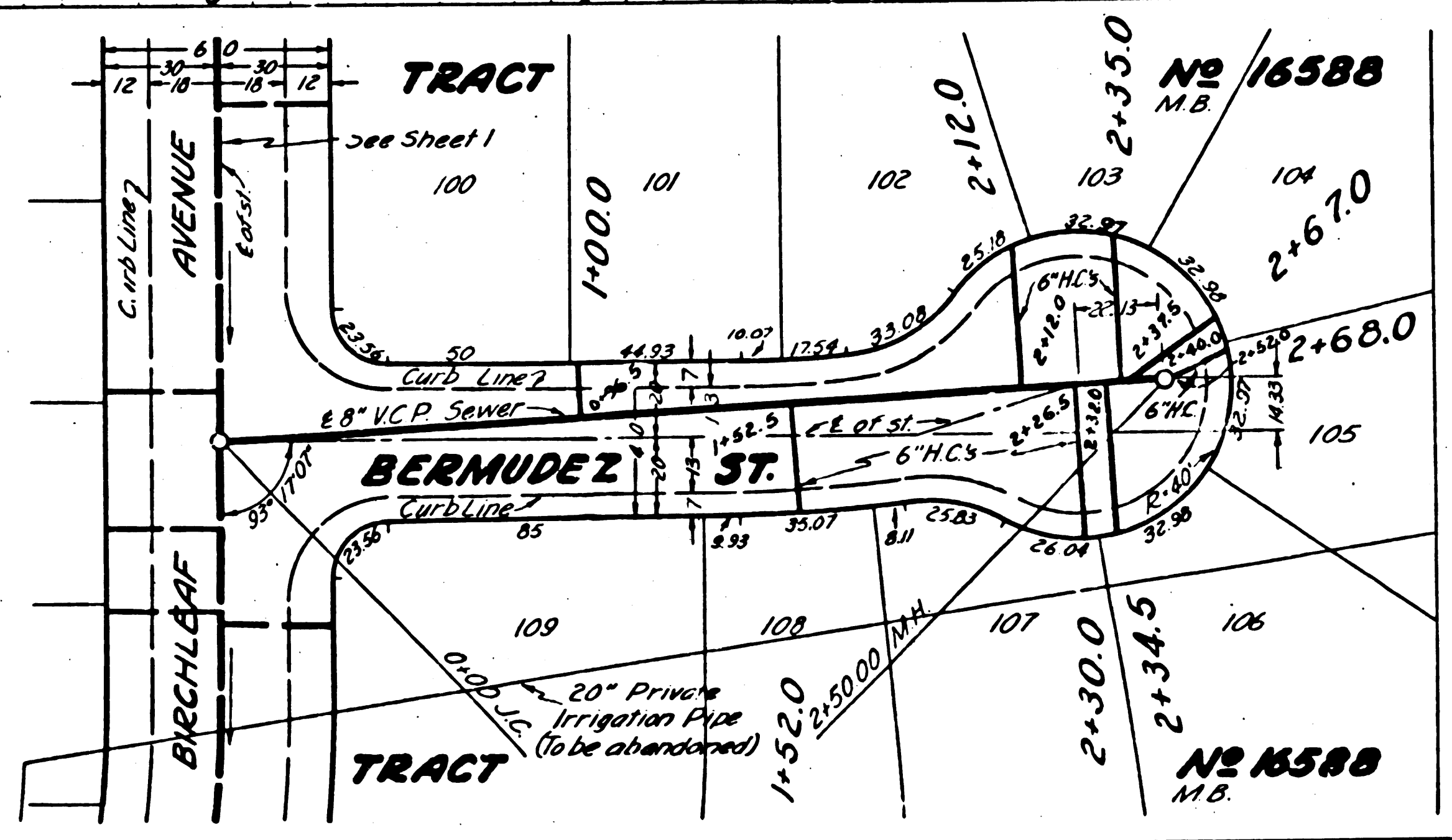
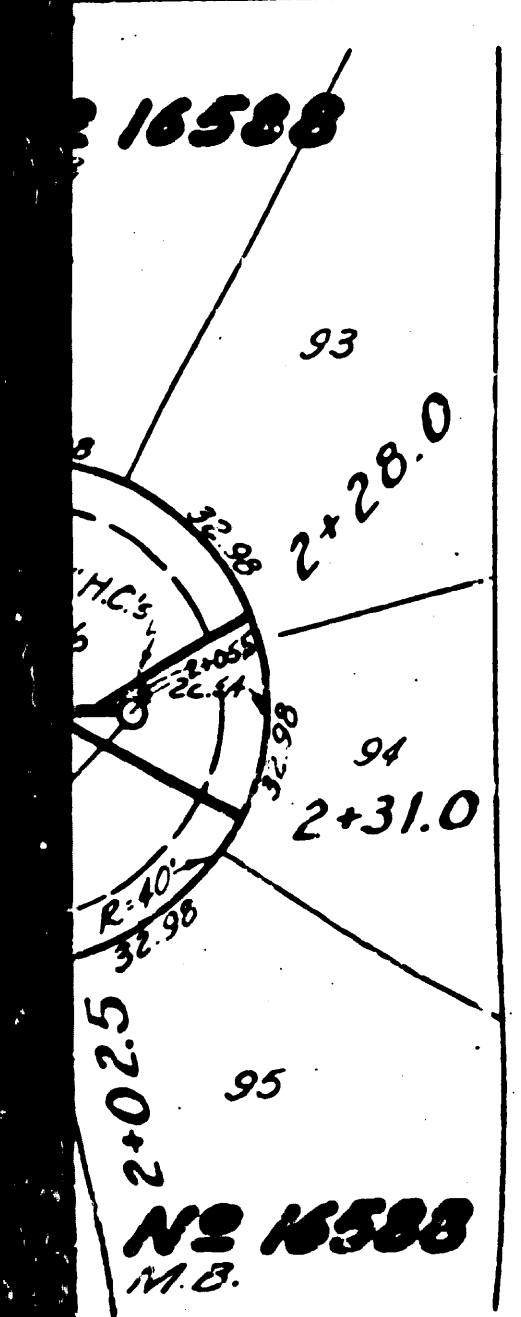
BY *S. F. K... ..*  
 REG. C. E. NO. 701

FOR LEGEND  
 SEE PLAN NO. S-44  
 FOR CONSTRUCTION NOTES SEE SHEET 1



COUNTY OF LOS ANGELES, CALIFORNIA  
 APPROVED: *[Signature]* COUNTY ENGINEER  
 APPROVED: *[Signature]* OFFICE ENGINEER  
 FOR CHIEF ENGINEER OF COUNTY  
 SANITATION DISTRICT NO. 2  
 CHECKED: *A. P... ..* 7-25-50  
 OFFICE OF COUNTY ENGINEER, REG. C. E. NO. 1502

WARRIAGE ST.  
 BIRCHLEAF AVE.  
 BIRCHLEAF AVE.  
 BERMUDEZ AVE.  
 BERMUDEZ AVE.  
 NS 16588  
 NS 16588  
 NS 16588



ENGINEERING SERVICE CORPORATION  
 1127 W. WASHINGTON BLVD.  
 LOS ANGELES 15 CALIF. PR 7281

REVISIONS		TRACED BY <i>SL</i>
		DES'D BY <i>SL</i>
		CK'D BY <i>[Signature]</i>
		SUBMITTED BY <i>[Signature]</i>

SUB STRUCTURES CK D					
W. O. NO.	DWG. NO.	DATE	SCALE	L. B.	P. B.
6045-1		AUG 18 1950			

*Handwritten note:* 100.23 50 100.23

7/27/50  
 Trm Line



