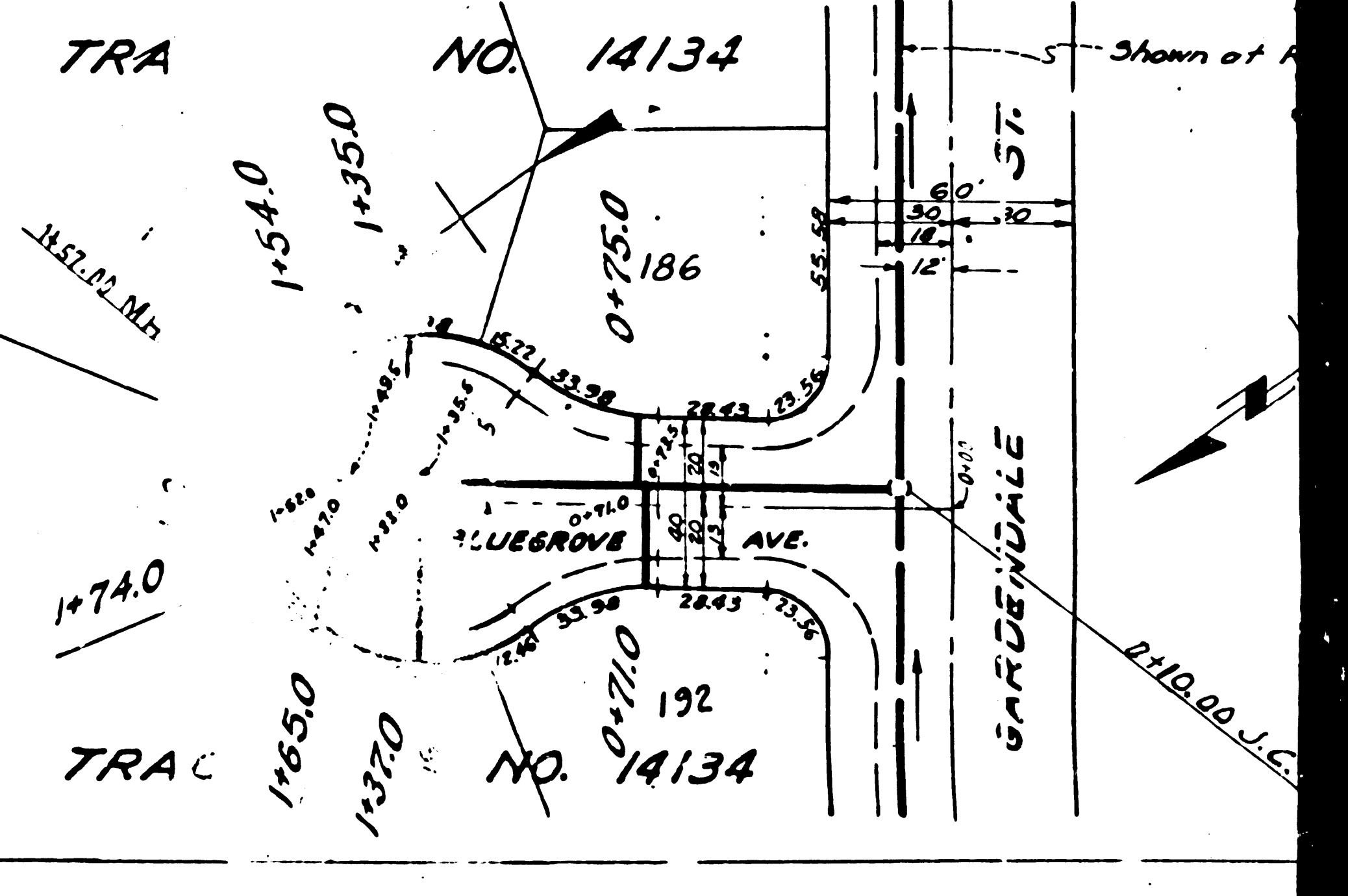
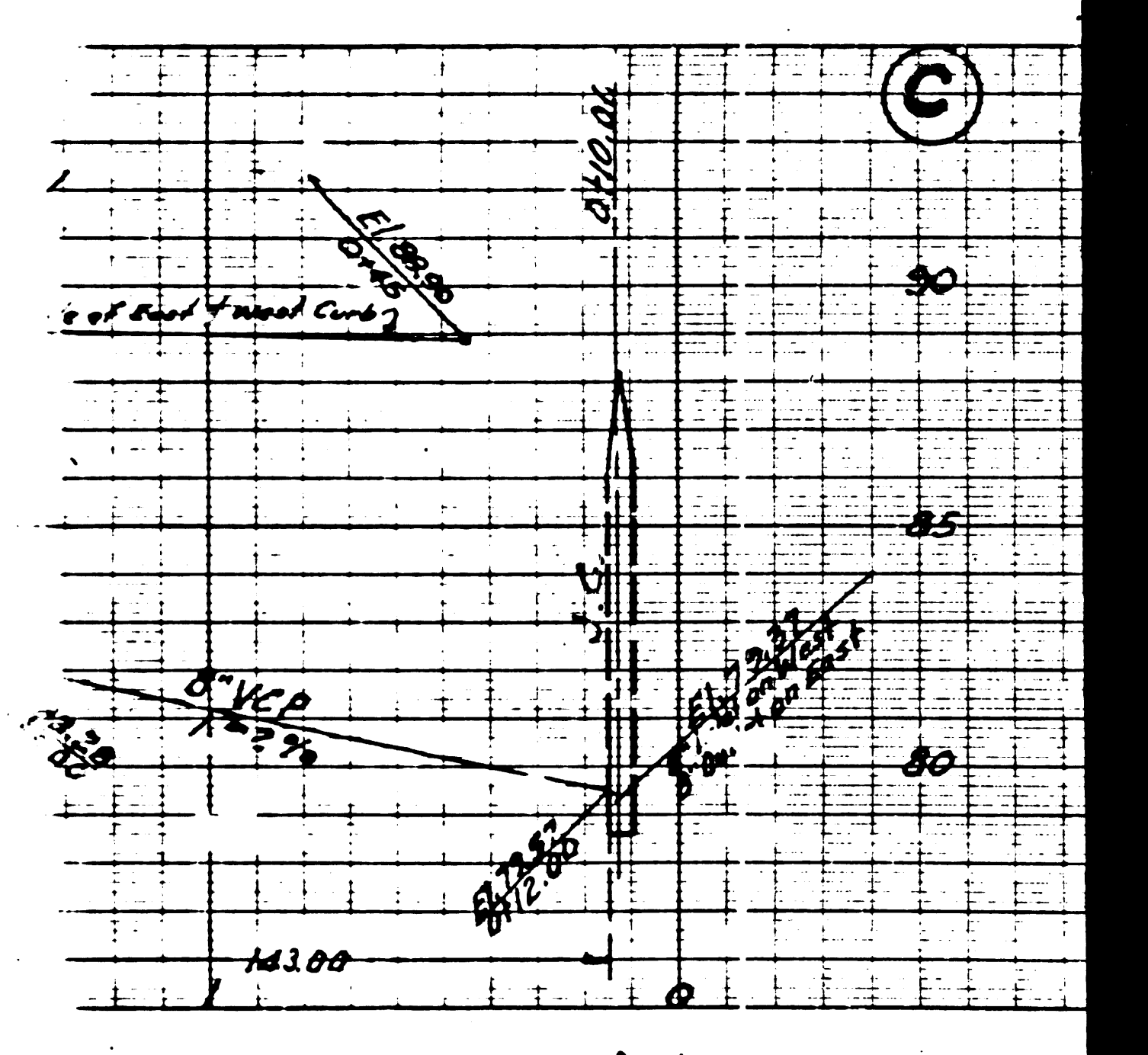
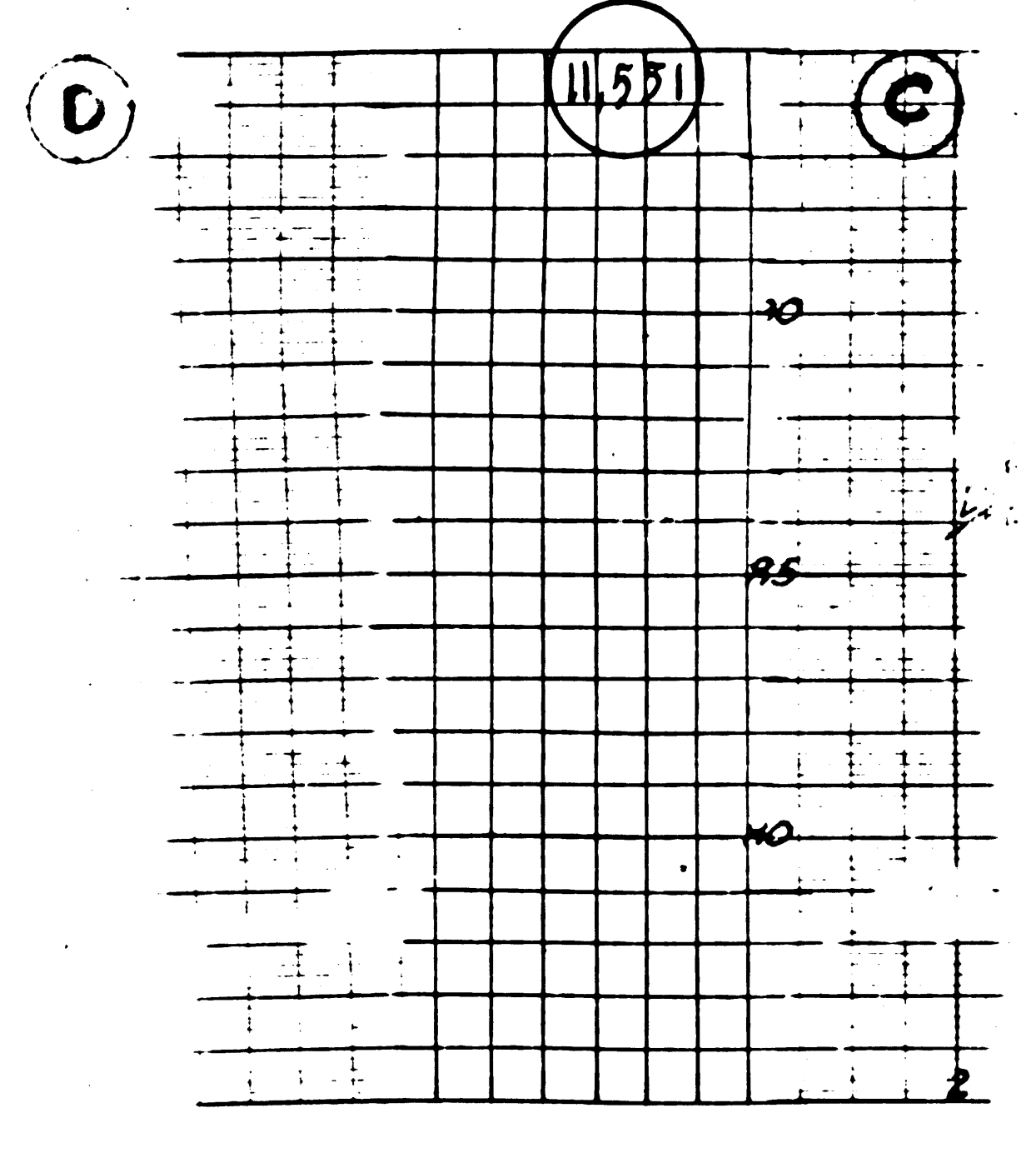
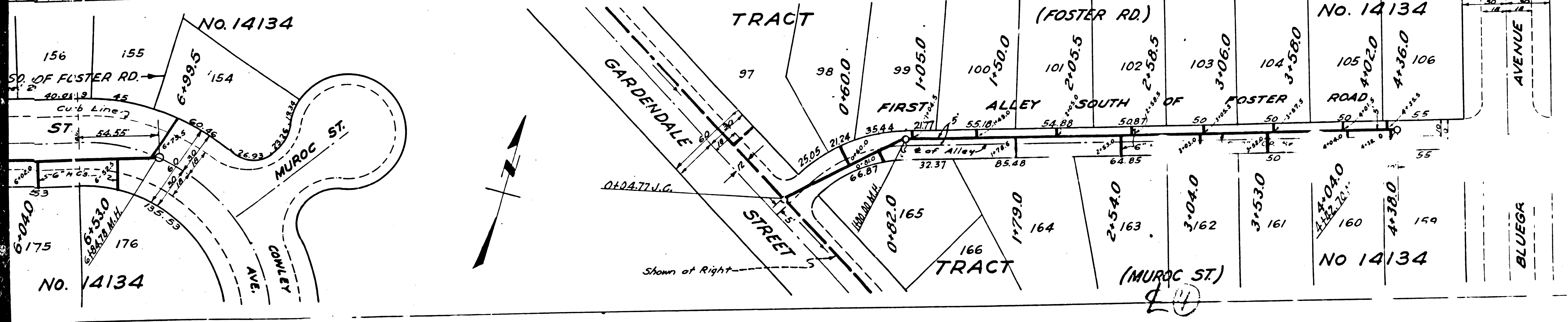
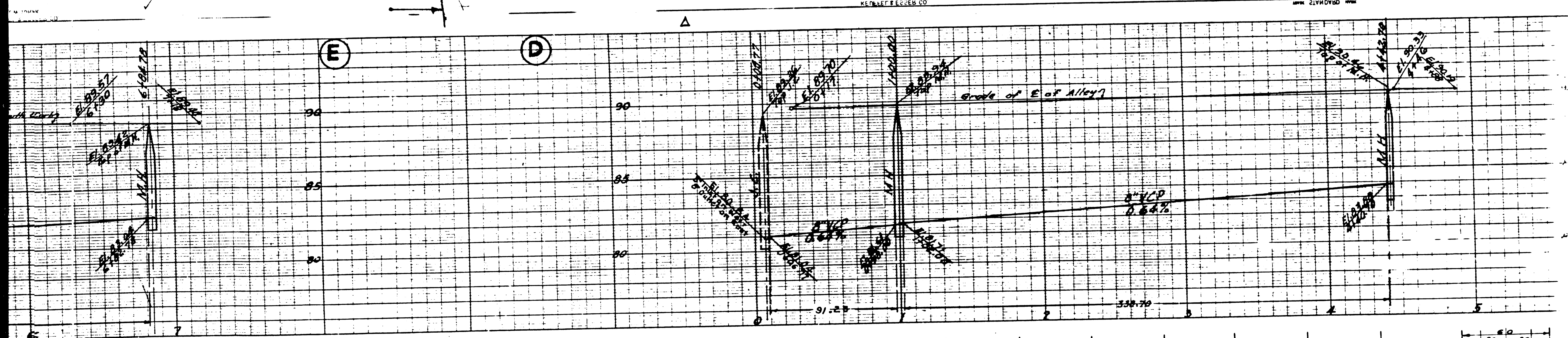
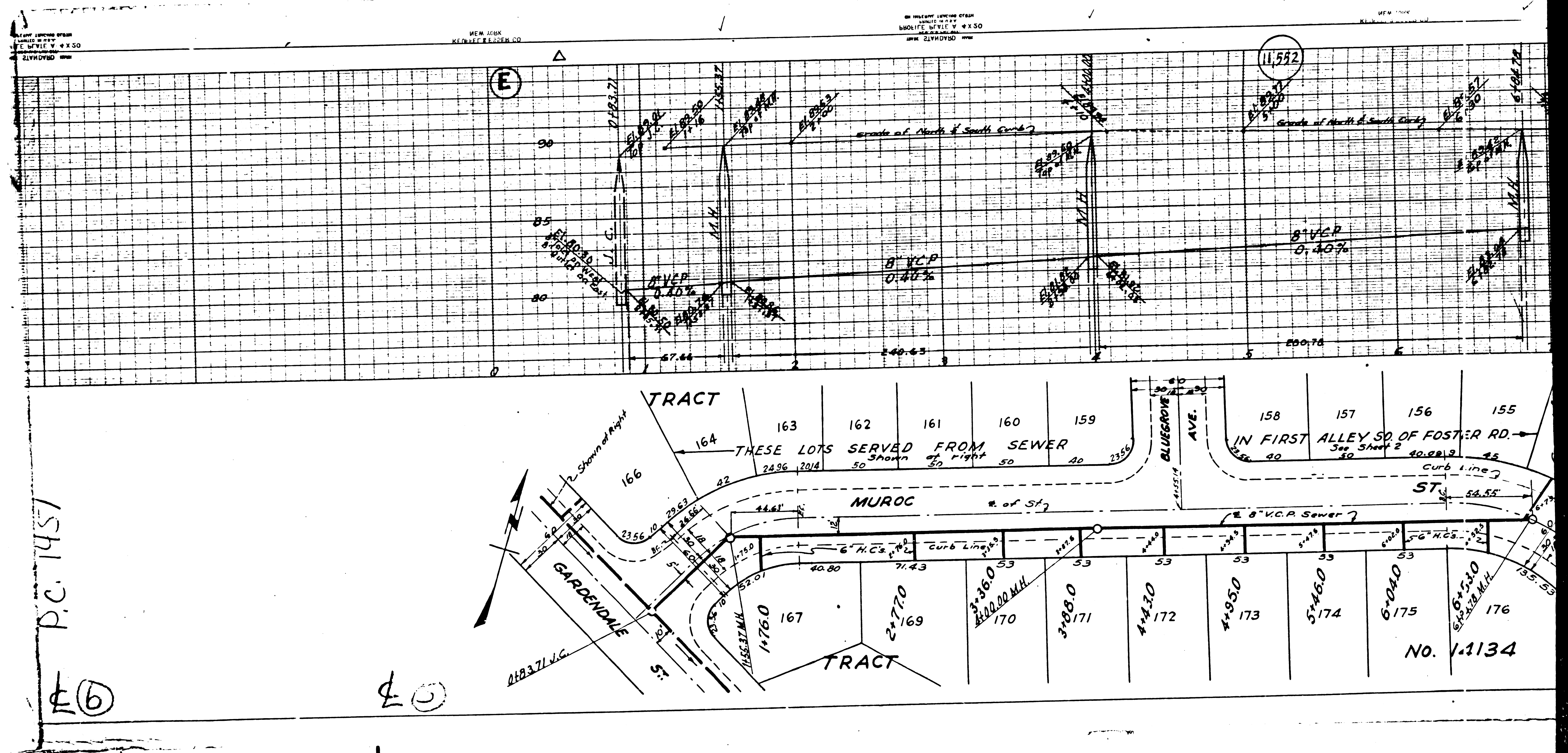


NEW YORK
MORSE ENGINEERING CO.

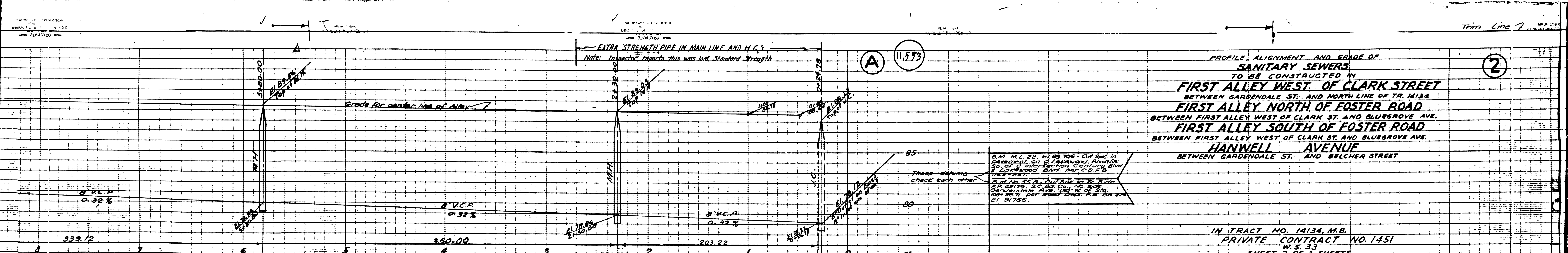




P.C. 1457

⊕(6)

⊕(0)



PROFILE, ALIGNMENT AND GRADE OF
SANITARY SEWERS
 TO BE CONSTRUCTED IN
FIRST ALLEY WEST OF CLARK STREET
 BETWEEN GARDENDALE ST. AND NORTH LINE OF TR. 14134
FIRST ALLEY NORTH OF FOSTER ROAD
 BETWEEN FIRST ALLEY WEST OF CLARK ST. AND BLUEGROVE AVE.
FIRST ALLEY SOUTH OF FOSTER ROAD
 BETWEEN FIRST ALLEY WEST OF CLARK ST. AND BLUEGROVE AVE.
HANWELL AVENUE
 BETWEEN GARDENDALE ST. AND BELCHER STREET

IN TRACT NO. 14134, M.B.
 PRIVATE CONTRACT NO. 1451
 W.S. 33
 SHEET 2 OF 3 SHEETS

SCALE: VERT. 1" = 4'
 HORIZ. 1" = 40'

PREPARED IN THE OFFICES OF
 WM. H. FAIR, JR.
 BY *Edmund J. Johnson*
 REG. C.E. 146 5828

FOR LEGEND
 SEE PLAN NO. S-6-64

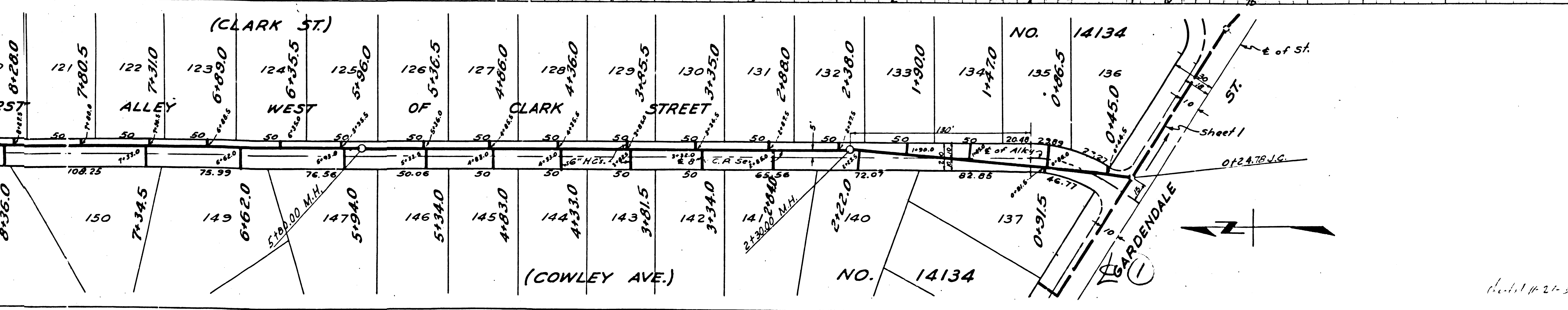
AUG 4 1930
 REGISTERED PROFESSIONAL ENGINEER

COUNTY OF LOS ANGELES, CALIFORNIA

APPROVED *Edmund J. Johnson*
 COUNTY ENGINEER

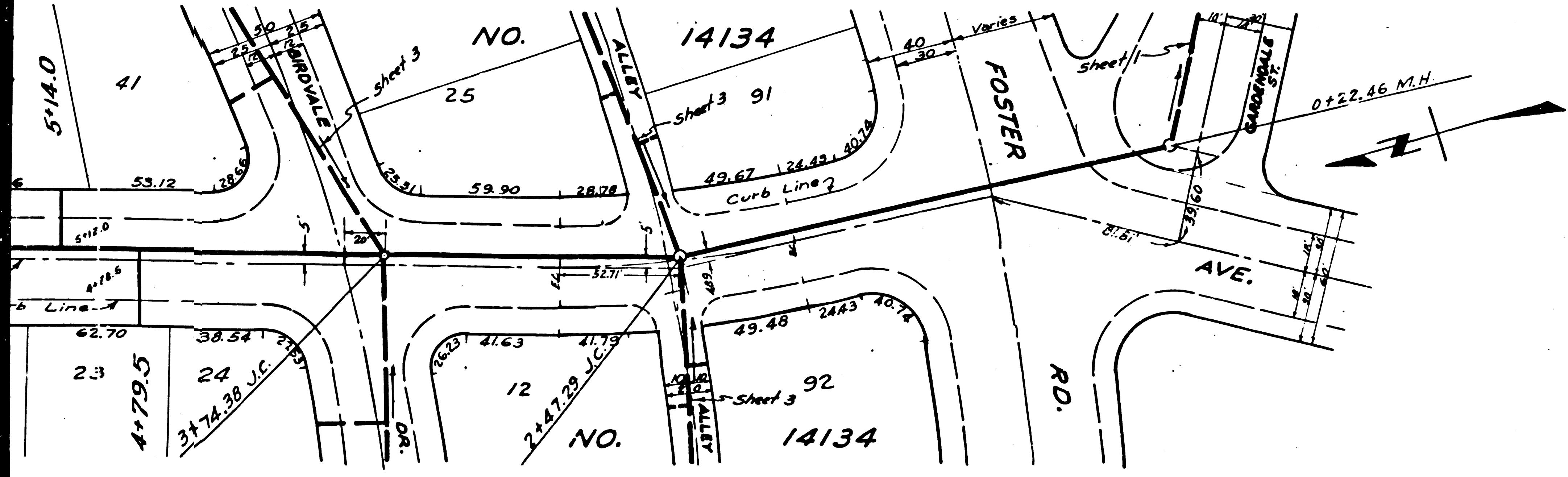
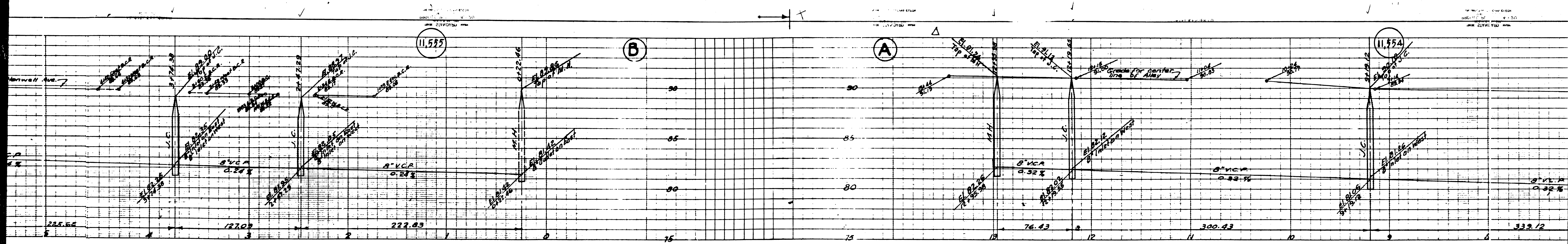
APPROVED *C.R. Conner*
 ASST. CHIEF ENGINEER FOR COUNTY
 SANITATION DISTRICT NO. 2

CHECKED BY *Edmund J. Johnson* 7-27-1930
 OFFICE OF COUNTY ENGINEER REG. C.E. 146528



2

Trim Line



⊕(2)

