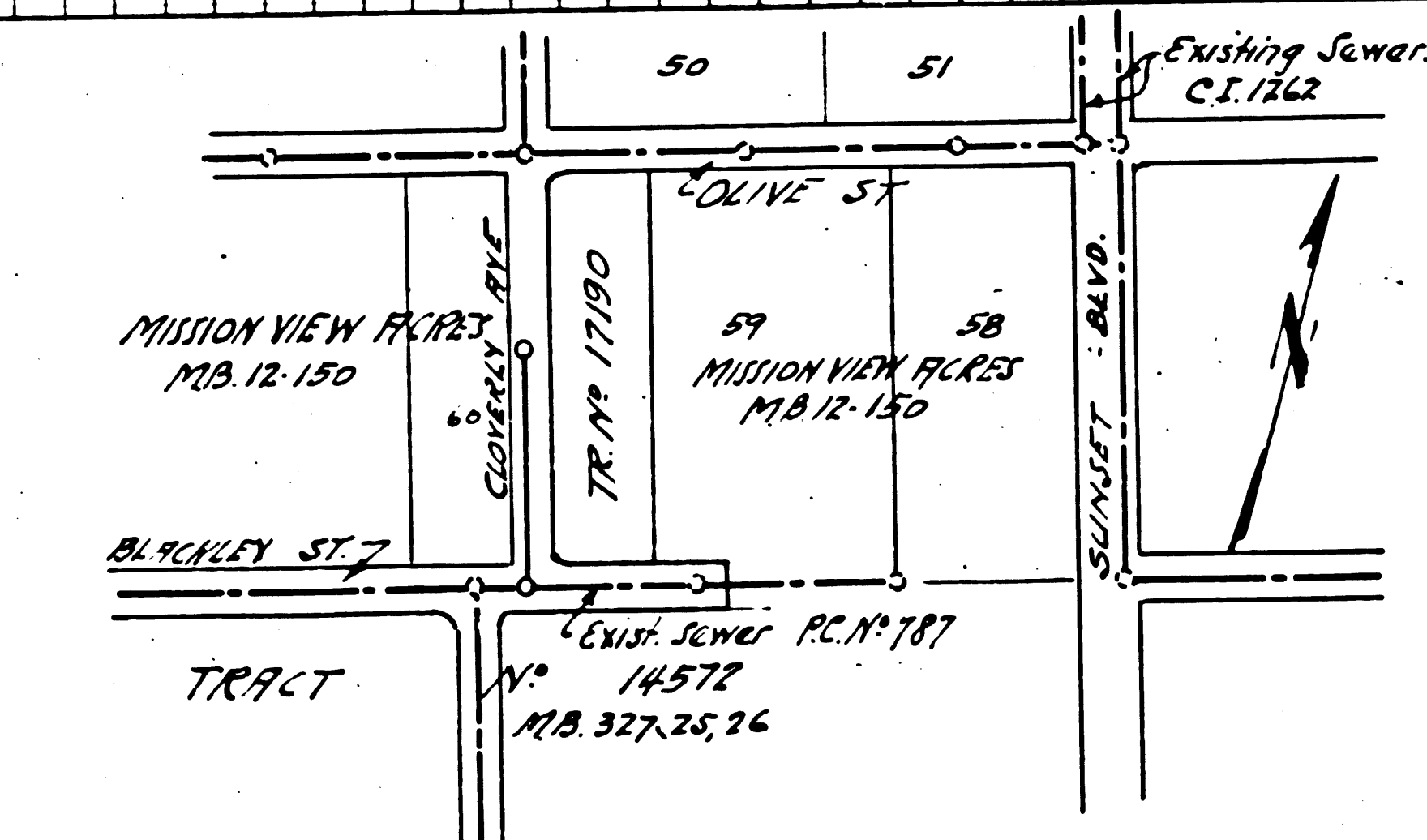
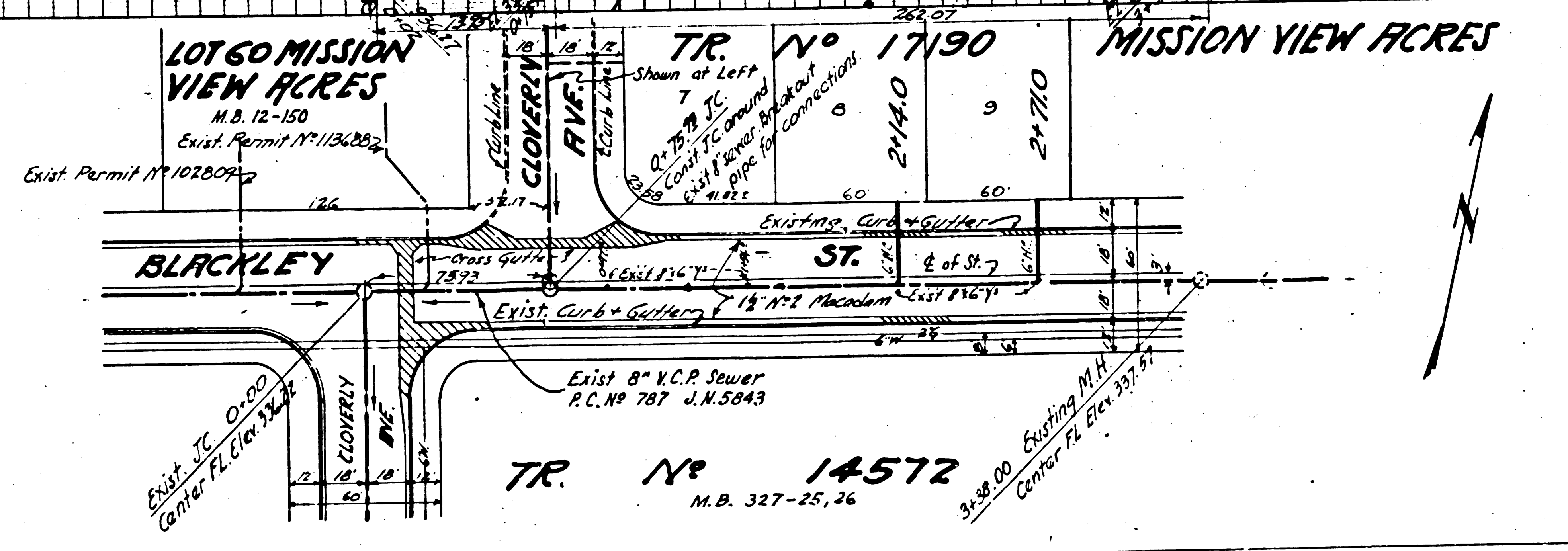


- (1) USE STANDARD MANHOLE FRAMES AND COVERS 60-17
 - (2) USE STANDARD STREAMLINE PIPE
 - (3) ALL CONNECTIONS FOR ALL VITRIFIED CLAY PIPE JOINTS
 - (4) REPAIRS AND THE NEW WITHIN PROVIDED TRENCH TO MEET LOS ANGELES COUNTY ROAD DEPARTMENT REQUIREMENTS IN ACCORDANCE WITH PERMITS
 - (5) CONTRACTOR SHALL MAINTAIN CONNECTIONS WITH EXISTING UTILITY LINES
 - (6) ALL STRUCTURES SHALL BE BRICK SEWER STRUCTURES 5'-10"
- NOTE: No representation of the County Engineer will be made for any portion of the work. The contractor shall be responsible for the accuracy of the plan and profile. The contractor shall be responsible for the accuracy of the plan and profile. The contractor shall be responsible for the accuracy of the plan and profile.

TRACT NO 17190
 PROFILE ALIGNMENT AND GRADES OF
SANITARY SEWERS
 TO BE CONSTRUCTED IN
CLOVERLY AVENUE
 BETWEEN OLIVE ST. AND BLACKLEY ST.
 IN TRACT NO. 17158

PRIVATE CONTRACT NO. 1457
 NO. 55
 SHEET 1 OF 1 SHEETS
 PREPARED BY: CHAS. H. BELL ENGINEER
 BY: [Signature]

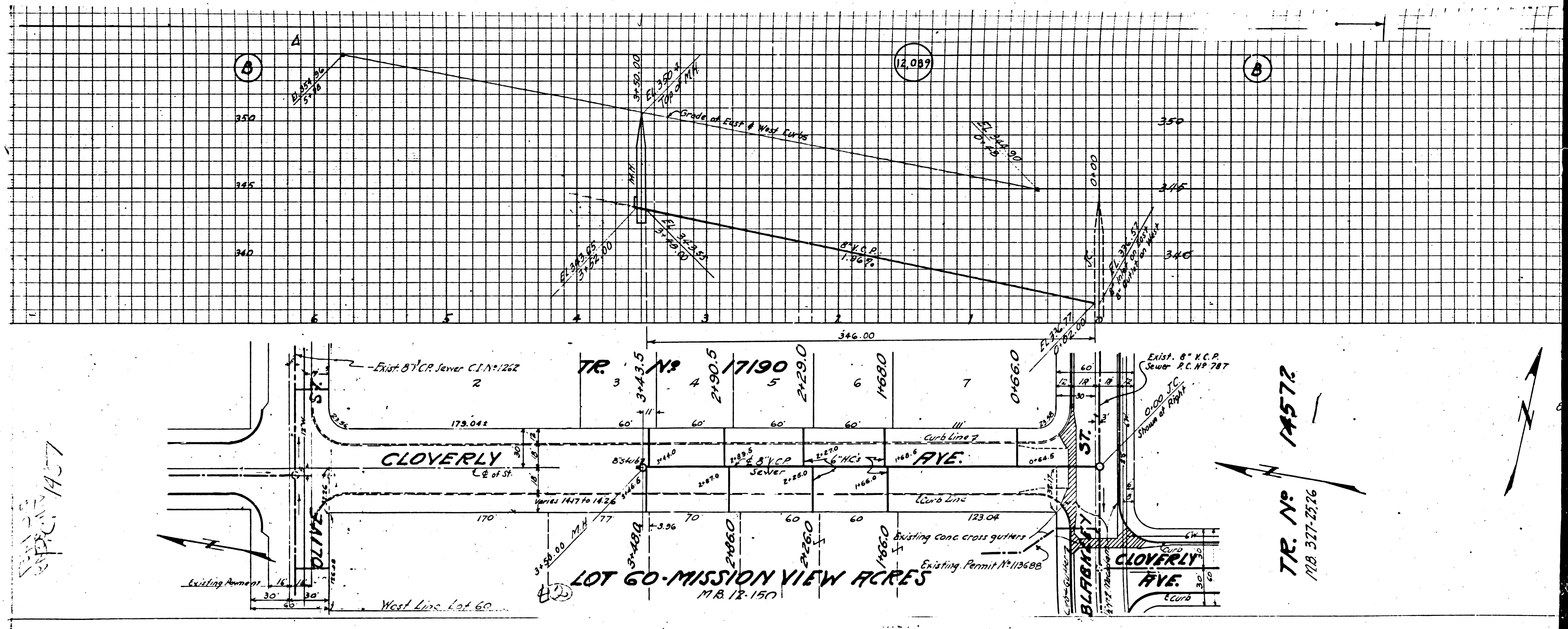


NOTE: Grades to which this improvement is to be constructed are shown on plans and profiles. Grade points for top of curb, center line of street or center line of alley are shown by circles on profiles. All points between designated points the grade shall be established so as to conform to a straight line drawn between said designated points. Elevations are in feet above U.S. datum or mean sea level. This drawing and the data thereon are hereby made a part of the specifications. Work shall be constructed according to specifications on file in the office of the County Engineer and shall be protected only in the presence of the County Engineer. Before work can be started the contractor must obtain a permit to excavate in county streets from the L.A. County Road Dept. 108 West 2nd St. and make a deposit with the County Engineer, 108 W. 2nd St. sufficient to cover the cost of construction inspection and record plans. Approval of this plan by the County Engineer does not constitute a representation as to the accuracy of the location or the existence or non-existence of any underground utility pipe or structure within the limits of this project. For LEGEND see plan number S-A-64.

COUNTY OF LOS ANGELES, CALIFORNIA.
 APPROVED: [Signature] Chief Deputy County Engineer
 APPROVED: [Signature] County Sanitation District

INDEX MAP
 Scale 1:300
 P.C. 1457 JN 3549

CHECKED BY: [Signature] Office of County Engineer
 R.E. NO. 7860



SPRINT 1457

TR. No. 14572
M.B. 377-2526